

The Lyman
1943

The Lynx

SOUTHWESTERN'S "ALMA MATER"

ISAAC PIERCE MASON
Re-harmonized by Ernest F. Hawker

JOHN BOWEN EDWARDS

Dear Thy O
Al - ma stal - wart
Lead - er

Ma - ter, towers of the
kind sol - id
fate stone, light.

That Thy South - west
lives with Thy strong wings

For In Thy
God's spire sons
own our In
power lov - er
that all rent
made hearts love
Thy great one
is To And

that makes us free:
a - gainst the wrong:
his trib - ute brings:

Thy torch has touched our
Our lives re - flect the
And dreams such dreams as

Our yearn - ing souls re - fined:
Thy state - ly clos - ter'd halls,
And vis - ions young men see.

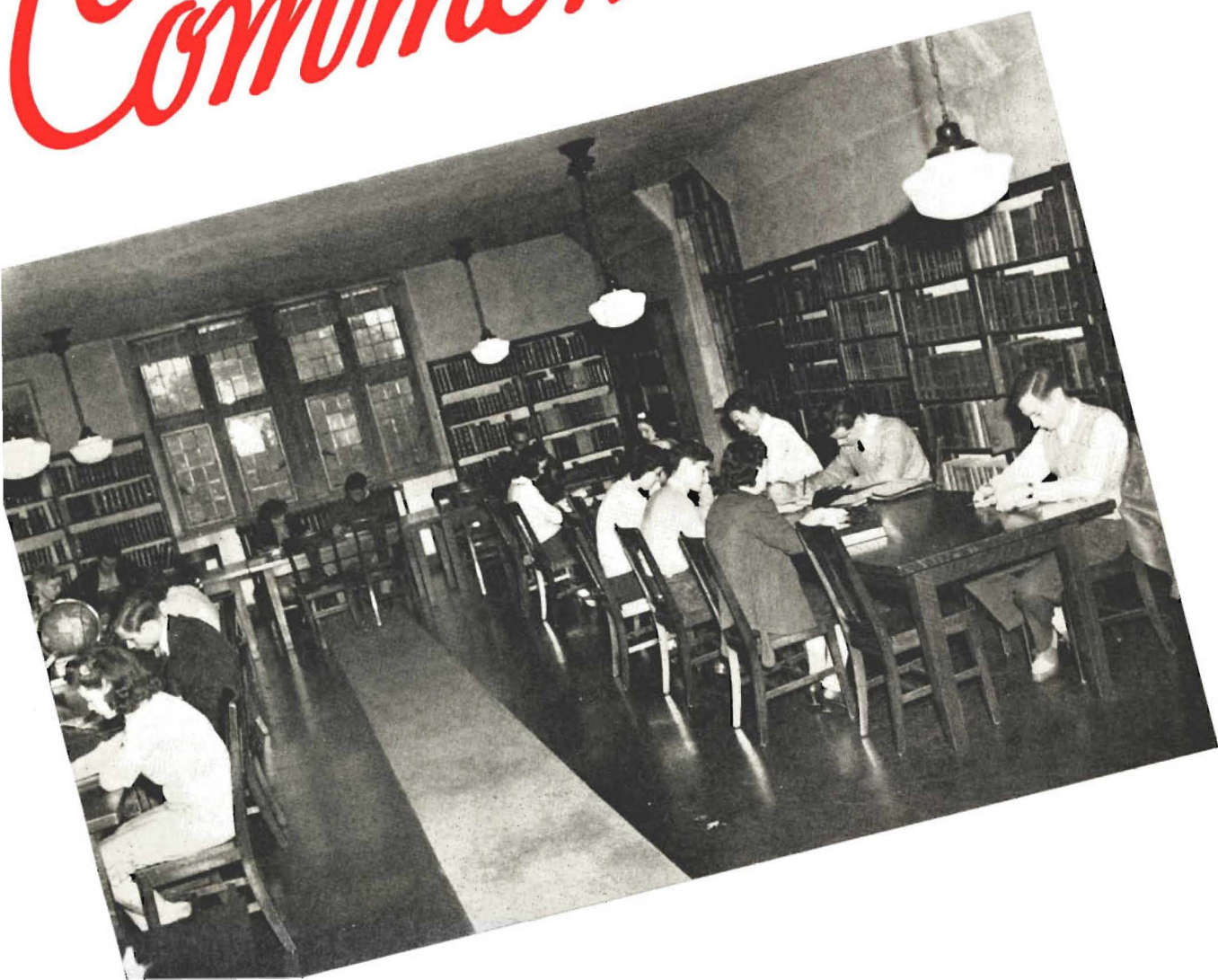
Through Thee we learn the
And char - ac - ters in grow
Keep light - ed in our

high - er aim,
gen - u - ine flame
And That Once
train dwell the tru - er
kin - died there Thy of
mind walls. Thee.

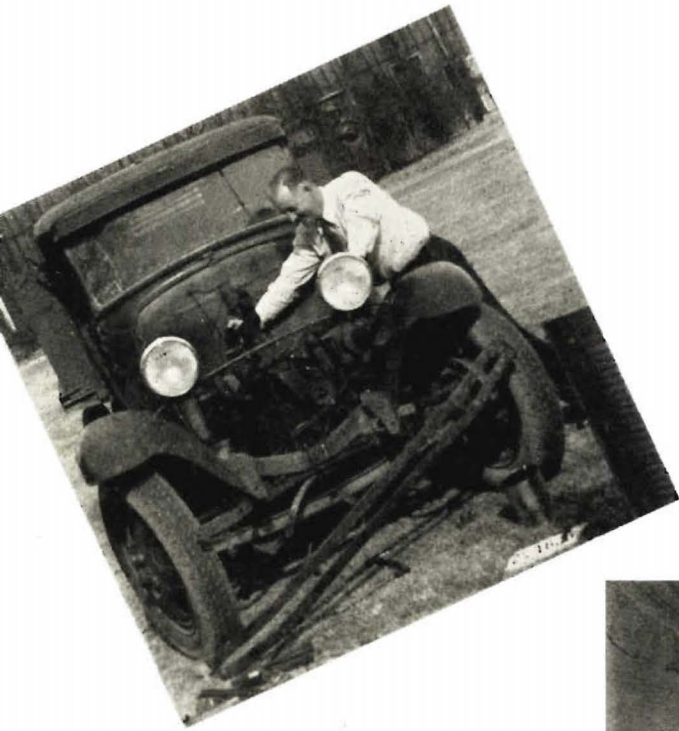
1
9
4
3



Commemorating







© A ©





Year



Art Southu

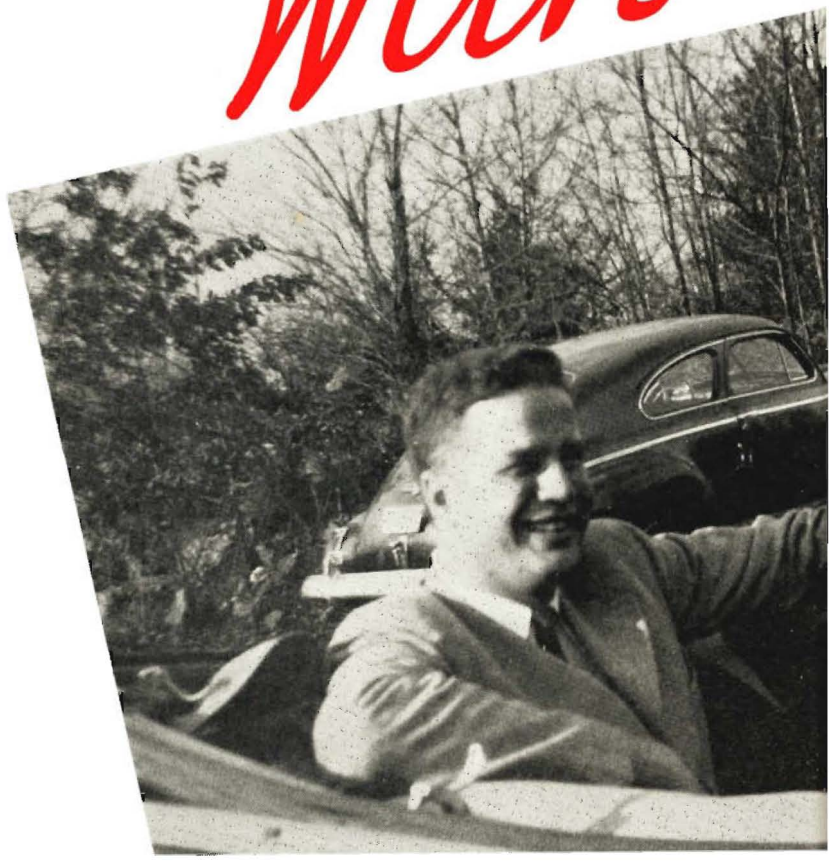


Western

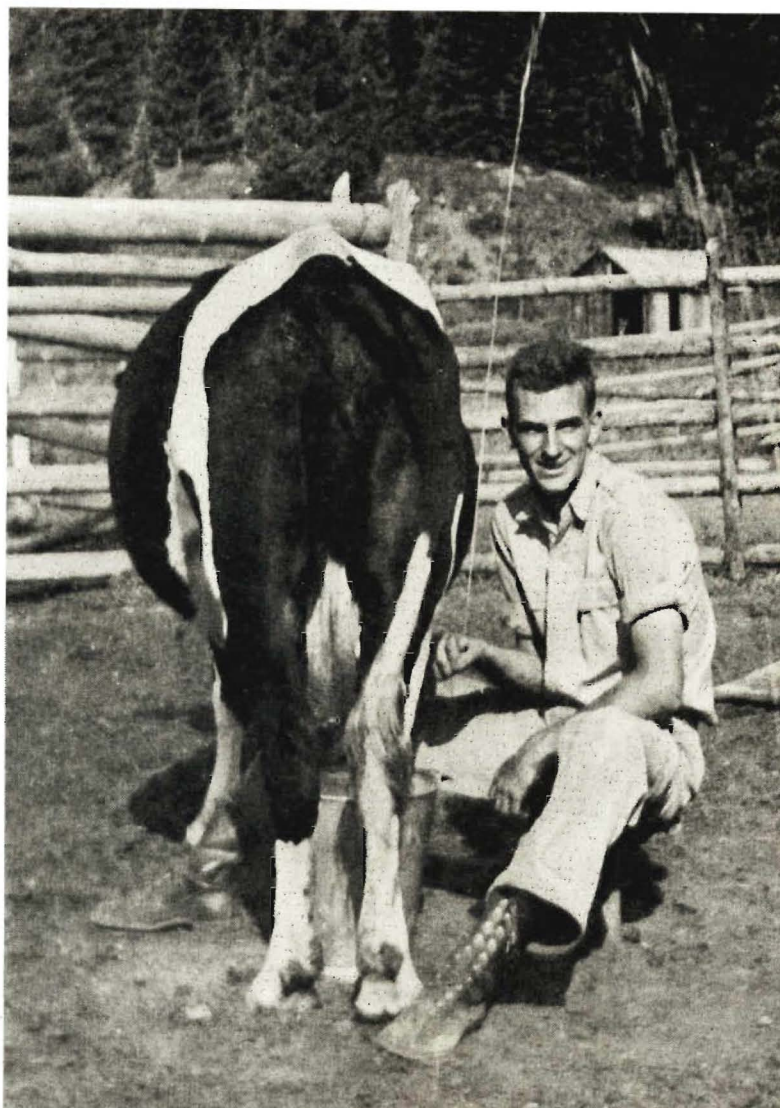




With

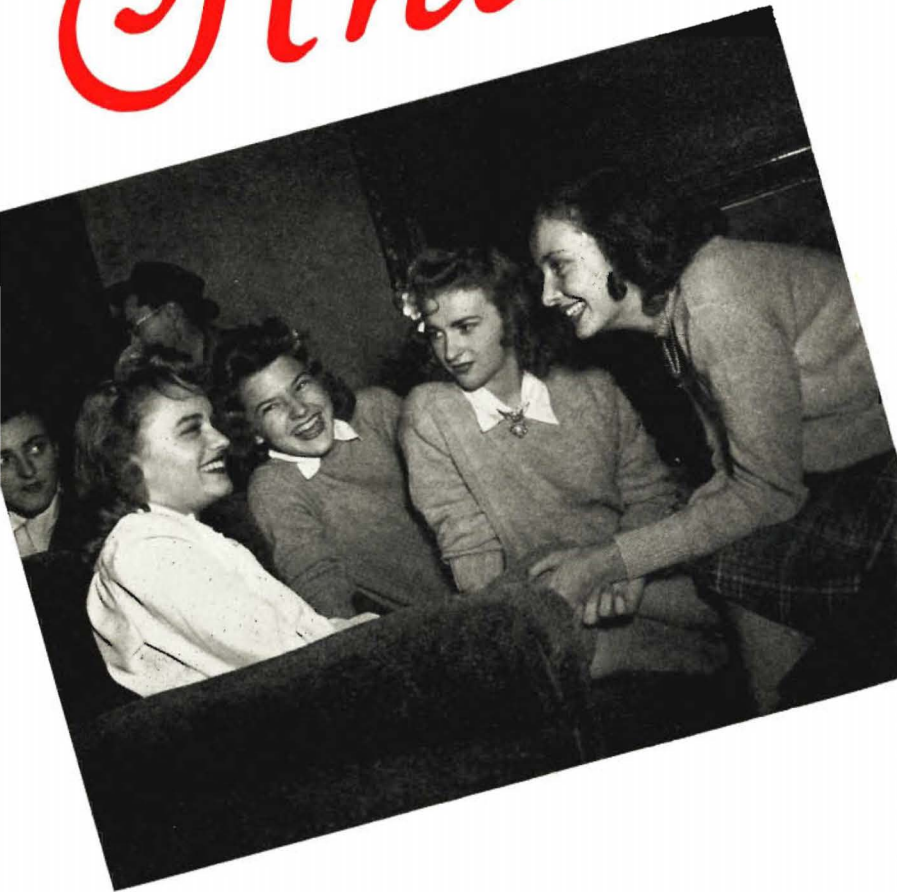


the Lads





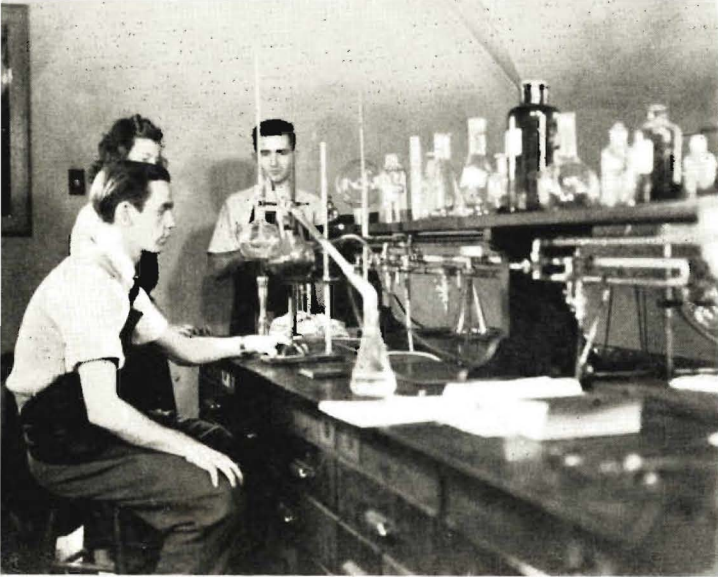
And the Li





isses





Art Work







And



at Play



T H E C O L L E G E



T H E C L A S S E S



O R G A N I Z A T I O N S



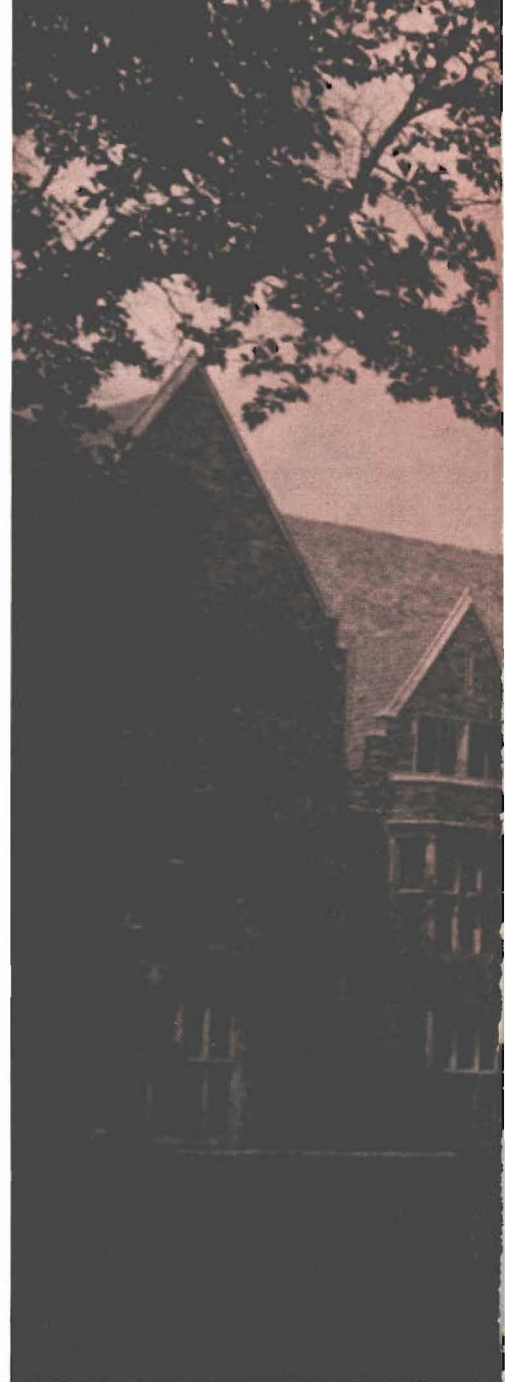
T H E B E A U T I E S



F R A T E R N I T I E S



S O R O R I T I E S



The

JOHN C. WHITSITT
Editor



nineteen hundred forty three

*L*YNX



DR. FELIX B. GEAR
Professor of Bible

WE DEDICATE THIS LYNX

We continually strive toward a mind which sings out deep full chords of thought; toward a mind possessing breadth and humour and finely wrought ideals.

To Dr. Felix B. Gear, Professor of Bible, we sincerely dedicate this book. For in him we recognize precisely such a mind. Expression of the esteem we feel for him is difficult; it is with gratitude that we acknowledge the molding force which his mind has exerted upon ours.

He shall remain with us long years as a symbol of Man Thinking; ever a gentleman and a friend.

The College



TO THE SENIORS

The Class of 1943 is unique in that its members have spent their entire collegiate period under the increasingly heavy clouds of the most devastating war in history. It is unique, too, in that, due to the accelerated program, the conferring of degrees is not confined to the traditional commencement day. In the freshman year of 1939 the war was terrible, but it seemed far away, and we were not all as greatly concerned as we should have been.

Even after Pearl Harbor, we had much to learn about our responsibilities and the necessity of adjusting ourselves to the needs of the situation. George Bernard Shaw said something to the effect that, if other planets are inhabited, those inhabitants must regard our planet as a lunatic asylum. It does not seem possible that present conditions could exist in a world which dates itself Anno Domini 1943.

We have all been affected by this world catastrophe, personally and collectively, consciously and unconsciously. We have been stabbed broad awake. The note of reality has entered into our thinking and living, and we are on the way to becoming citizens of the world.

To you, the members of this class, who will be more speedily scattered over the face of the earth than any other class has ever been, our hearts go out in confidence and affection. We expect you to give a good account of yourselves, wherever you are or whatever you are doing, in the fight for freedom, truth, and justice, and we pray that the unfailing grace of our Eternal Father will enable you to do your full part in ushering in an era that will be just for all nations and hopeful for all men.

Chas. E. Diehl,



DR. CHARLES E. DIEHL
President

T H E D E A N S



A. THEODORE JOHNSON, A.M., PH.D.
DEAN
PROFESSOR OF ENGLISH



WALLER RAYMOND COOPER, A.M., LL.B.
DEAN OF MEN
PROFESSOR OF HISTORY



MARGARET HUXTABLE TOWNSEND, M.A.
DEAN OF WOMEN
ASSOCIATE PROFESSOR OF SOCIOLOGY



W. ROSS JUNKIN, A.M.
DEAN OF FRESHMEN
ASSOCIATE PROFESSOR OF ECONOMICS
AND BUSINESS ADMINISTRATION

THE FACULTY

ROBERT W. HARTLEY, Ph.D.

A.B., University of Utah
B.A., Oxford University
Ph.D., University of Pennsylvania
Professor of Mathematics

FELIX B. GEAR, B.D., Th.M., D.D.

A.B., Davis and Emory College
B.D., Union Theological Seminary
Th.M., Princeton Theological Seminary
Associate Professor of Bible
The Albert Bruce Curry Chair

ROBERT P. STRICKLER, Ph.D.

A.B., West Virginia University
1907-1910 Oxford University
Ph.D., Johns Hopkins University

RAYMOND T. VAUGHN, A.M.

A.B., Culver-Stockton College
A.M., University of Missouri
Assistant Professor of Chemistry and Physics

ROBERT S. POND, A.M., Ph.D.

A.B., Washburn College
A.M., Marietta College
Ph.D., University of Kansas
Associate Professor of Mathematics

WILLIAM ORPHEUS SHEWMAKER, Ph.D., D.D.

A.B., Centre College
Graduate of Princeton Theological Seminary
Ph.D., Hartford Theological Seminary
Professor of Bible

JOHN Q. WOLF, JR., A.M.

A.B., Arkansas College
A.M., Vanderbilt University
Assistant Professor of English

CHARLES LOUIS TOWNSEND, A.M., Ph.D.

B.A., McGill University
A.M. and Ph.D., Harvard University
Professor of Modern Languages



THE FACULTY



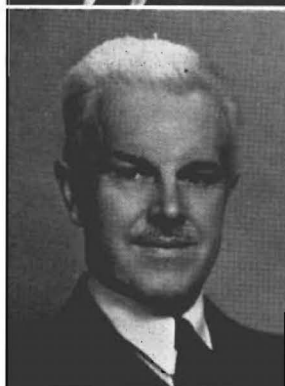
OLIVER C. YONTS, B.S.
B.S., Southwestern
Assistant Professor of Electronics

ALEXANDER P. KELSO, M.A., D.D.
A.B., Washington and Jefferson College
B.D., Western Theological Seminary
B.Sc. (Ethics) and M.A. (Theology) Oxford University
Professor of Philosophy and Christian Ethics



PEYTON NALLE RHODES, A.M., Ph.D.
A.B., A.M., and Ph.D., University of Virginia
Professor of Physics

MARION LEIGH MacQUEEN, A.M., Ph.D.
A.B., Southwestern
A.M., University of Wisconsin
Ph.D., University of Chicago
Professor of Mathematics



MARTIN W. STORN, A.M., Ph.D.
A.B., Wartburg College
A.M., University of Washington
Ph.D., University of Illinois
Professor of Romance Languages

WOLFGANG PAULSEN, Ph.D.
Student at Tuebingen, Bonn, Berlin, and Leipzig
Ph.D., University of Berne
Assistant Professor of Modern Languages



JOHN H. DAVIS, M.A., Ph.D.
A.B., University of Kentucky
B.A. and M.A., Oxford University
Ph.D., University of Chicago
Professor of History
The J. J. McComb Chair

HENRY J. BASSETT, Ph.D.
A.B., Maryville College
A.B., Princeton University
Ph.D., University of Michigan
Professor of Latin

OGDEN BAINE, M.S., Ph.D. (Not Pictured)
B.S., Southwestern
M.S. and Ph.D., New York University
Professor of Chemistry

THE FACULTY

BURNET C. TUTHILL, A.M., M.Mus.

A.B. and A.M., Columbia University
M.Mus., College of Music of Cincinnati
Director of Music



DAVID M. AMACKER, M.A.

A.B., Princeton University
B.A. and M.A., Oxford University
Professor of Political Science

THOMAS E. HILL, A.M., Ph.D.

A.B., Davidson College
B.D., Union Theological Seminary (Virginia)
A.M., University of Richmond
Ph.D., University of Edinburgh
Associate Professor of Bible



CLINTON L. BAKER, M.S., Ph.D.

B.S. and M.S., Emory University
Ph.D., Columbia University
Associate Professor of Biology

WILLIAM R. ATKINSON, A.M., Ph.D.

B.S., George Peabody College
A.M., Columbia University
Ph.D., George Peabody College
Professor of Psychology and Education



WILBUR STOUT, A.M., Ph.D.

A.B., A.M., Ph.D., University of North Carolina
Assistant Professor of English and Dramatics

AL CLEMENS, B.A.

B.A., University of Alabama
Director of Physical Education
and Athletics



LOUISE STRATMANN, A.B.

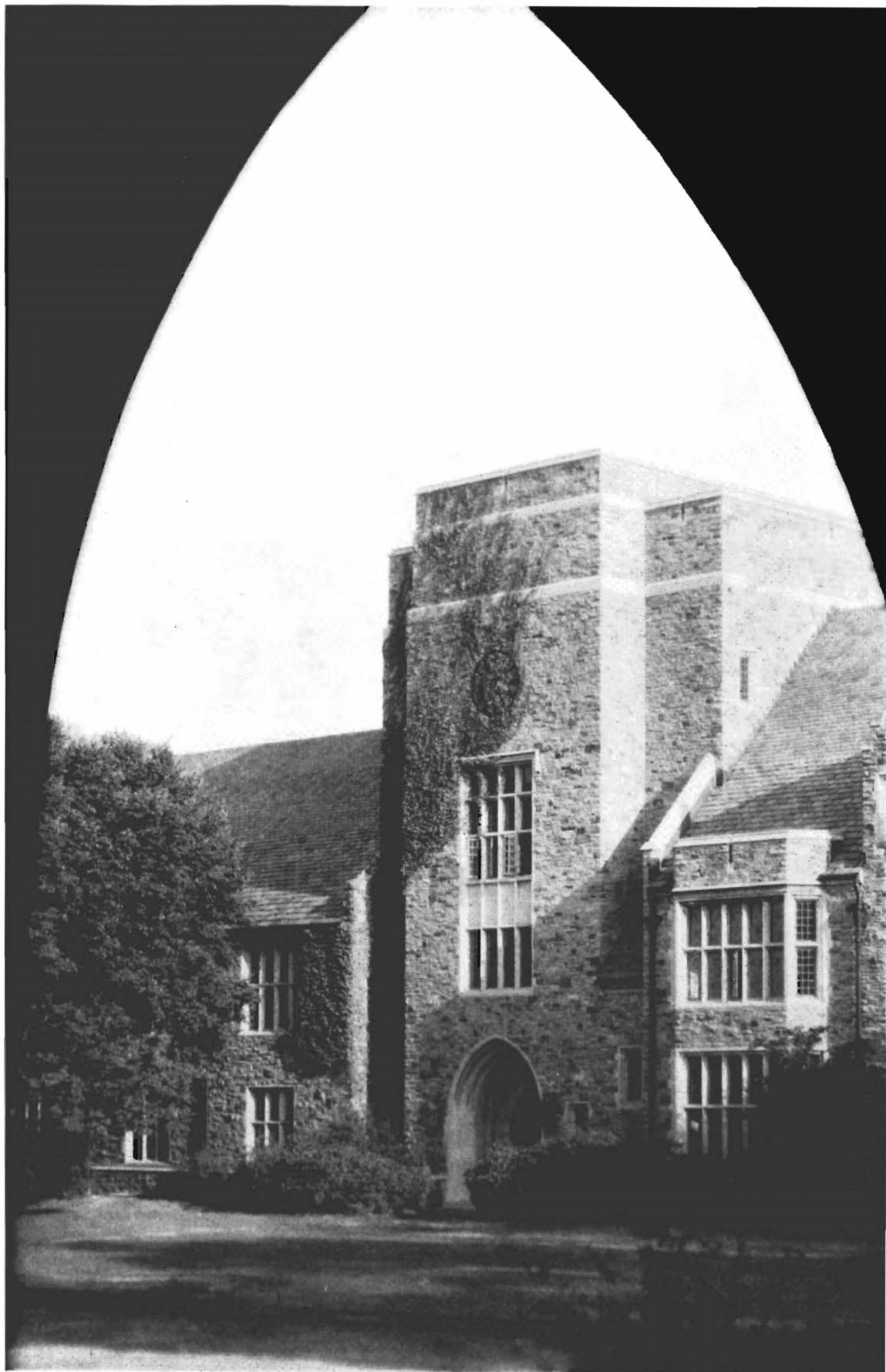
A.B., Southwestern
Director of Physical Education
for Women



C. L. SPRINGFIELD

Bursar





PALMER HALL



ASHNER GATEWAY



ROBB HALL

The Classes



SENIOR CLASS OFFICERS

ALLEN HILZHEIM President

JOHN WHITSITT Vice-President

ELIZABETH HINCKLEY Secretary



SENIORS

Edward Neufville Adams, Jr.
B.S.

Columbia, Mississippi

Alpha Tau Omega; Alpha Theta Phi, vice-president; Chi Beta Phi, vice-president; Nitist Club; Spadow Scholarship in Chemistry; Student Instructor C.P.T. Ground School.



Alec Lee Albertine, B.A.

Memphis, Tennessee

Kappa Alpha, Secretary.

William Kirkland Allen, B.A.

Martin, Tennessee

Omicron Delta Kappa, president; Honor Council; Student Council; April Fool Carnival Court; War Emergency Committee; Nitist Club; Monitor in Robb Hall.



James Tucker Andrews, B.A.

Memphis, Tennessee

Sigma Nu, treasurer; Varsity Football; "S" Club; Chi Beta Phi; Candidate for Distinction in Mathematics.

Lester Marchant Baggett, B.A.

Memphis, Tennessee

Sigma Alpha Epsilon, secretary; Nitist Club; Spanish Club.



Lavern Raymond Bearden, B.A.

Duncan, Oklahoma

Sigma Nu; "S" Club; Varsity Football; "All-Dixie Conference" fullback; Track; Southwestern and Dixie Conference, and Tennessee A. A. C. javelin records; Spanish Club.

Robert Homer Beasley, B.A.

Tuscumbia, Alabama

Kappa Sigma; President of Student Body; Vice-president of Student Body; Student Council (3 years); President of Sophomore Class; Captain of Freshman Football Team; "S" Club; Honor Council (4 years); Varsity Football; Christian Union Cabinet (3 years); "Who's Who in Colleges" (2 years); April Fool Carnival Court (2 years); Lord in Waiting.



Georgeanne Little Beaumont
B.A.

Memphis, Tennessee

Zeta Tau Alpha, best pledge, president; Women's Panhellenic, vice-president, president; S.T.A.B., vice-president; Student Council; Women's Governing Board; Torch Society; Y.W.C.A.; "Who's Who in Colleges" (2 years).

SENIORS

Helen Virginia Brittingham, B.A.

Memphis, Tennessee

Delta Delta Delta, corresponding secretary, recording secretary, vice-president; transfer from Women's College, University of Delaware; Y. W. C. A., secretary, treasurer; Sou'wester Staff; Choir.



George Battle Case, B.A.

Tarrytown, New York

Alpha Tau Omega, worthy usher, president (2 years); Nitist Club, president; Franco-German Club; Men's Panhellenic Council, president; Debating Team; Elections Commission, vice-president; Sou'wester feature writer; Service Club; Intramural Board; Omicron Delta Kappa; Monitor in Calvin Hall; Student-Faculty Forum Committee; Stylus Club.



Walton Smith Cole, B.A.

Kerrville, Tennessee

Southwestern Singers; Band; German Club.



James Dabney Collier, Jr., B.A.

Memphis, Tennessee

Sigma Alpha Epsilon, vice-president, president; Men's Panhellenic Council; "S" Club; Varsity Tennis; Varsity Basketball; Omicron Delta Kappa; President of Publications Board; Student Council; Nitist Club.



James Hervey Conway, B.A.

Memphis, Tennessee

Ministerial Club, secretary; Christian Union Cabinet; Honorary Member of "S" Club; Sou'wester Staff, Sports Editor; Vice-president of Non Fraternity Group.



Dorothy Irene Daniel, B.A.

Memphis, Tennessee

Secretary-treasurer of Non-Sorority Group; Y. W. C. A.; Southwestern Singers; Episcopal Club; Belk Bible Medal; Israel Peres Scholarship.



Henry Tanner Davis, B.A.

Memphis, Tennessee

Kappa Sigma



Reama LeCroy DeVall, B.A.

Memphis, Tennessee

Delta Delta Delta; Pi Intersorority; Alpha Theta Phi, vice-president; Sou'wester Staff.



SENIORS

John Edward Donnelly, B.S.
Monroeville, Alabama

Alpha Tau Omega, vice-president; Band; Southwestern Singers; Varsity Basketball.



Fleet Eugene Edwards, B.S.
Memphis, Tennessee

Kappa Sigma; Omicron Delta Kappa; Varsity Football; "S" Club; Nitist Club.



James Wesley Edwards, B.S.
Memphis, Tennessee

Chi Beta Phi; Southwestern Players; Southwestern Singers; Sou'wester Staff; Franco-German Club; Candidate for Honors in Mathematics.



**Morgan Carrington Fowler
B.A.**

Memphis, Tennessee
Kappa Sigma; Business Manager of Sou'wester; Nitist Club.



Mary Ann Garmon, B.A.
Marks, Mississippi

Kappa Delta, secretary, vice-president, president; S.T.A.B.; Women's Panhellenic Council, secretary; Student Welfare Committee; Elections Commission; President of Evergreen Hall; Y. W. C. A.



Cornelia Ann Garrott, B.A.
Sledge, Mississippi

Chi Omega; Y.W.C.A.; Canterbury Club; Sou'wester Staff; Lynx Staff.



Dorothy Louise Gill, B.A.
Memphis, Tennessee

Alpha Omicron Pi, treasurer; transfer from M.S.C.W.; Sou'wester Staff; Lynx Staff; Spanish Club, vice-president; Chi Beta Phi, secretary-treasurer; Alpha Theta Phi, president; Y. W. C. A.; Third Honors in Sophomore Class; Candidate for Distinction in Mathematics.



Vance McClelland Gilmer, B.A.
Citronelle, Alabama

Alpha Tau Omega, secretary; Publications Board; Men's Panhellenic Council, Nitist Club.



SENIORS

Robert Edward Goostree, B.A.
Clarksville, Tennessee

Sigma Nu, president; Men's Panhellenic Council, vice-president; Elections Commission; Band; Omicron Delta Kappa; Nitist Club, secretary-treasurer; Editor Sou'wester; Candidate for Honors in Political Science; Who's Who in American Universities and Colleges; Southwestern Players; Stylus Club; Service Club, secretary; Christian Union Cabinet; Student Council.



Lloyd James Gordon, B.A.
Memphis, Tennessee

Kappa Alpha, treasurer, vice-president; Service Club, vice-president; Intramural boxing champion (3 years); Lynx Staff; Southwestern C. P. T. Flying; Elections Commission.

Jessamine Grimes, B.A.
Memphis, Tennessee

Chi Omega, activities chairman; Southwestern Players, secretary; Torch Society; Spanish Club, president.



Tommie Jean Haygood, B.A.
Memphis, Tennessee

Non-Sorority, vice-president; Torch Society; Y.W.C.A., secretary; Honor Council, secretary; Christian Union Cabinet; Chi Beta Phi; Sou'wester Business Staff; Student Assistant in Bible Department; Spanish Club.

Rosella Compton Hill, B.A.
Covington, Tennessee

Non-Sorority, secretary; Y.W.C.A. Cabinet; Christian Union Cabinet; Franco-German Club; transfer from Belhaven College.

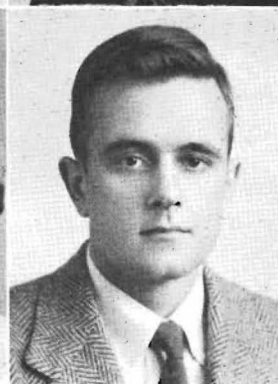


Allen Hearin Hilzheim, B.A.
Memphis, Tennessee

Kappa Sigma, secretary, vice-president, president (2 terms); Service Club, president; Sou'wester Staff; Nitist Club; Men's Panhellenic Council; Student Council (2 years); President of Senior Class; Elections Commission; "Most Popular Boy"; King of April Fool Carnival; Who's Who in American Universities and Colleges.

Elizabeth Hinckley, B.A.
Memphis, Tennessee

Alpha Omicron Pi, recording secretary; Women's Panhellenic Council; Southwestern Players; Sou'wester Staff; S. T. A. B., president; Secretary of Senior Class; Elections Commission; Y. W. C. A.



Malcolm Vincent Hinson, B.A.
Memphis, Tennessee

Kappa Alpha; Tennis Team; Elections Commission; Service Club; "S" Club.

SENIORS

Louise Howry, B.A.

Memphis, Tennessee

Delta Delta Delta, rush chairman, marshal, president; Women's Panhellenic Council, president; Torch Society, vice-president; Pi Inter-sorority, vice-president, president; "Most Stylish Co-Ed"; "Miss Southwestern"; April Fool Carnival Court (2 years), Lady-in-Waiting; Who's Who In American Universities and Colleges; Student Council; Student Assistant in Psychology; Nitist Club; Alpha Theta Phi, vice-president; Co-Ed Editor of Sou'wester; Sou'wester Staff; Lynx Staff; Candidate for Honors in History.

Katherine Martin Jones, B.A.

Memphis, Tennessee

Zeta Tau Alpha, honor initiate, secretary; Southwestern Players; Spanish Club, treasurer; Football Sponsor; Y.W.C.A.; Sou'wester Staff; Spencer Greek Award; Make-Up Editor of Co-Ed Edition of Sou'wester; Candidate for Distinction in Spanish.

Emmett Edward Kelly, B.A.

Tupelo, Mississippi

Kappa Sigma; Alpha Theta Phi; Omicron Delta Kappa, president; Honor Council; Nitist Club; President of Freshman Class; Varsity Football, alternate captain-elect; "S" Club; graduated with Honors in History.

Cheves Kilgore Ligon, B.A.

Columbia, Tennessee

Kappa Sigma; Christian Union Cabinet, president; Ministerial Club, vice-president; Intramural Board; Band; Sports Editor for Sou'wester; graduated with Distinction in Philosophy.



Mary Harriet Hunter, B.A.

Memphis, Tennessee

Delta Delta Delta, treasurer, recording secretary; Honor Council; Sou'wester Staff; Y. W. C. A.; Southwestern Players; Southwestern Singers; Franco-German Club; Lynx Staff; Torch Society; Elections Commission.

Roland Ward Jones, Jr., B.S.

Lula, Mississippi

Phi Gamma Delta; transfer from Davidson College; Elections Commission, president; Chi Beta Phi; Omicron Delta Kappa; Student Council; Honor Council; Who's Who in American Universities and Colleges; April Fool Carnival Court; Student Assistant in Physics; Candidate for Distinction in Physics and Mathematics.

Laura Terrell Lake, B.A.

Memphis, Tennessee

Alpha Omicron Pi, recording and corresponding secretary; Southwestern Players, vice-president, president; Franco-German Club; Y. W. C. A.; Nitist Club; Student Council.

Mary McAdams, B.A.

Memphis, Tennessee

Kappa Delta; Y. W. C. A.; Southwestern Singers.

SENIORS

Lizette McCall, B.A.
Memphis, Tennessee

Chi Omega, social and civic service chairman; Y. W. C. A.; Spanish Club.



Marianne McCalla, B.A.
Memphis, Tennessee

Alpha Omicron Pi, best pledge, historian; transfer from Judson College; Sou'wester Staff, feature editor; Southwestern Singers; Lynx Staff; Editor of "Co-Ed" Edition of Sou'wester; Women's Undergraduate Society, secretary-treasurer; Stylus Club; Torch Society.

Samuel Edgar McFadden, B.S.
Tupelo, Mississippi

Alpha Tau Omega, secretary, treasurer; transfer from Louisiana Tech; Memphis Symphony Orchestra; Franco-German Club.



Beverly McFall, B.A.
Memphis, Tennessee

Chi Omega; Southwestern Players; Y. W. C. A.

Joseph Albert McGehee, B.A.
Alexandria, Louisiana

President of Non-Fraternity Group; Christian Union Cabinet; Southwestern Singers; Ministerial Club, president.



Mary Lorraine McMinn, B.A.
Memphis, Tennessee
Y. W. C. A.; Franco-German Club, secretary.

James Clement McNeas, B.S.
McComb, Mississippi

Kappa Sigma, vice-president; Southwestern Players, president; Student Council; Vice-President of Junior Class.



Clyde Norwood Malone, B.A.
Augusta, Arkansas
Kappa Sigma; "S" Club; Varsity Football.

SENIORS

Milton Ford Mathews, B.A.

Memphis, Tennessee

Chi Omega, model initiate, pledge mistress, president; Canterbury Club, secretary, treasurer; S. T. A. B., secretary-treasurer; Honor Council; Secretary-Treasurer of Junior Class; April Fool Carnival Court (4 years), Queen; Lynx Staff; Sou'wester Staff; Y. W. C. A.; Homecoming Queen; Torch Society, president; Women's Panhellenic Council, vice-president; Secretary-Treasurer of the Student Body; Student Council.



**Anne Coulbourn Middleton
B.A.**

Memphis, Tennessee

Kappa Delta, historian; Y. W. C. A.; Southwestern Singers; Franco-German Club; Southwestern Representative at Memphis Symphony Association.

Katharine Miller, B.A.

Memphis, Tennessee

Alpha Omicron Pi, historian, corresponding secretary, president; Y. W. C. A., vice-president, president; Christian Union Cabinet, secretary-treasurer; Secretary-Treasurer of Sophomore Class; Torch Society, secretary-treasurer, Sophomore Bracelet winner; Student Assistant in Biology; Women's Panhellenic Council, treasurer; Sou'wester Staff; Lynx Staff; Faculty Committee on Religious Life; Who's Who in American Universities and Colleges.



Hannah Flattau Miller, B.A.

Memphis, Tennessee

John Claude Mills, B.A.

Bogalusa, Louisiana

Sigma Alpha Epsilon, vice-president, president; Intramural manager (2 years); Student Director of Intramurals; Elections Commission; Men's Panhellenic Council.



Marjorie Ruth Moorhead, B.A.

North Little Rock, Ark.

President of Non-Sorority Group; President of Evergreen Hall; Christian Union Cabinet; Elections Commission, secretary.

Julian Clark Nall, B.S.

Memphis, Tennessee

Sigma Alpha Epsilon, president; Vice-President of Student Body; President of Student Body; President of Junior Class; Chi Beta Phi, president; "S" Club, president; Honor Council; Student Assistant in Physics; Service Club; Who's Who in American Universities and Colleges (2 years); Varsity Basketball; Southwestern Players; Spanish Club; Men's Panhellenic Council; April Fool Carnival Court (2 years); Elections Commission; Student Welfare Committee; Candidate for Distinction in Physics and Mathematics; Omicron Delta Kappa; best all round boy.



Mary Clara New, B.A.

Memphis, Tennessee

Alpha Omicron Pi; Pi-Intersorority; Y. W. C. A.; Canterbury Club.

SENIORS

Jane Gift Peete, B.S.

Memphis, Tennessee

Chi Omega; Y. W. C. A.; Canterbury Club; Spanish Club; Southwestern Players; Elections Commission; Sou'wester Staff; Lynx Staff.



Claude Romine, B.S.

Arcola, Mississippi

Kappa Sigma, vice-president.

Marion Liles Slusser, B.S.

Memphis, Tennessee

Kappa Sigma; Chi Beta Phi.



Mary Virginia Smith, B.A.

Memphis, Tennessee

Zeta Tau Alpha, honor initiate, secretary, president; Women's Panhellenic Council; Spanish Club; Y. W. C. A.; Sou'wester Staff; Lynx Staff; Elections Commission.

Dorothy Isabel South, B.A.

Memphis, Tennessee

Stylus Club; Sou'wester Staff; Y. W. C. A.; Feature Editor of "Co-Ed" Edition of Sou'wester; Candidate for Honors in Economics.



Sadie Dee Wahl, B.A.

Memphis, Tennessee

Transfer from Washington University; Franco-German Club, reporter, secretary, treasurer; Y. W. C. A.

Lewis Donelson Wellford, B.A.

New Orleans, Louisiana

Sigma Alpha Epsilon, vice-president; Varsity Basketball Captain; Varsity Tennis; Varsity Track; "S" Club; Ministerial Club; Nitist Club; Christian Union Cabinet; President of Publications Board; Men's Panhellenic Council; Student Council; April Fool Carnival Court.



John Childress Whitsitt, B.A.

Memphis, Tennessee

Sigma Alpha Epsilon, treasurer (2 years); Vice-President of Senior Class; Men's Panhellenic Council; Editor of the Lynx; Student Council; Nitist Club, vice-president; Southwestern Players; Spanish Club, president; Omicron Delta Kappa, vice-president; Sou'wester Staff; Second Honors in Junior Class; Candidate for Honors in Economics.

SENIORS

Marion Janice Williams, B.A.

McComb, Mississippi

Chi Omega, vice-president of pledges; Canterbury Club, program chairman; Southwestern Singers; Y. W. C. A.



William Southall Wills, B.A.

Memphis, Tennessee

Sigma Alpha Epsilon.

Elizabeth Davis Woodcock, B.A.

Memphis, Tennessee



William Arthur Wooten, B.A.

Memphis, Tennessee

Sigma Alpha Epsilon, treasurer, vice-president; "S" Club, secretary; Omicron Delta Kappa, vice-president; Sophomore Cup; First Honors in Sophomore Class; Alpha Theta Phi, secretary; Who's Who in American Universities and Colleges.

JUNIOR CLASS OFFICERS

FRANK KENNEDY President

SAM STEPHENSON Vice-President

PATTY RADFORD Secretary-Treasurer



JUNIORS

BETTY CHISM ALBRO
Zeta Tau Alpha
Memphis, Tennessee

RAY MAXWELL ALLEN
Kappa Alpha
Memphis, Tennessee

JAMES DAVID BAKER
Sigma Nu
Tupelo, Mississippi

MARGARET CATHARINE BATTAILE
Chi Omega
Memphis, Tennessee

FRANCES SCOTT BOSTICK
Chi Omega
Benoit, Mississippi

ALFRED O. CANON, JR.
Kappa Alpha
Memphis, Tennessee

CHAM CANON
Sigma Alpha Epsilon
Maud, Mississippi

LOUISE LEFEVRE CLARKE
Alpha Omicron Pi
Memphis, Tennessee

THOMAS DIXON CONNELL
Alpha Tau Omega
Belcher, Louisiana

EMMY JEAN DOLFINGER
Delta Delta Delta
Bells, Tennessee



JUNIORS



WILLIAM CLINTON DOWDLE Greenwood, Mississippi
Kappa Sigma



JAMES LUKE DWYER Memphis, Tennessee
Sigma Alpha Epsilon



HILAS CLYDE EARHART, JR. Louisville, Mississippi
Kappa Sigma



CHARLES ARTHUR EVANS, JR. Tupelo, Mississippi



ALLEN FAUNTLEROY Memphis, Tennessee
Chi Omega



DOROTHY PERKINS FLANIKEN Memphis, Tennessee
Alpha Omicron Pi

MABEL ELIZABETH FRANCIS Memphis, Tennessee
Delta Delta Delta

WILLIAM STEVE GOODWYN Memphis, Tennessee
Kappa Sigma

DONALD CODE GORDON Memphis, Tennessee
Kappa Alpha

MARY LOUISE HARTZELL Memphis, Tennessee
Kappa Delta

JUNIORS

KENNETH ALPHONSE HOLLAND Memphis, Tennessee
Sigma Nu

VIRGINIA CLIFTON HUGHES Memphis, Tennessee
Chi Omega

JAMES OTTO ISING Russellville, Arkansas
Sigma Nu

SUSAN CHRISTIAN JETT Memphis, Tennessee
Alpha Omicron Pi

PEGGY LOUISE KELLY Memphis, Tennessee
Kappa Delta

JANET BEATRICE KELSO Memphis, Tennessee
Alpha Omicron Pi

FRANK LOVE KENNEDY Port Gibson, Mississippi
Kappa Sigma

WILLIAM HAYS McCLURE Union City, Tennessee
Sigma Nu

MARION BASKERVILLE McKEE Memphis, Tennessee
Chi Omega

LOUISA GAGE McLEAN Memphis, Tennessee
Chi Omega



JUNIORS



MAYNARD MILLARD MILLER Clarendon, Texas



AGNES ANN MING Memphis, Tennessee
Alpha Omicron Pi



JAMES COWDEN MITCHENER Nashville, Tennessee



GEORGE MORROW, JR. Memphis, Tennessee
Sigma Alpha Epsilon



JOHN WILLIAM NORTHCROSS Memphis, Tennessee



DEMETRA PATTON Memphis, Tennessee
Alpha Omicron Pi



VAN BUREN PHILPOT, JR. Houston, Mississippi
Kappa Alpha



SUE GWALTNEY POTTS Memphis, Tennessee
Chi Omega



ADELE LANOUE PRICHARD Inverness, Mississippi
Kappa Delta



PATTY RADFORD Memphis, Tennessee
Chi Omega

JUNIORS

EDWARD FRANCIS RHOADES Shreveport, Louisiana

HENRIETTA GRIBBLE RUHMANN Waco, Texas

RUBY SHEFSKY Memphis, Tennessee

WILLIAM SID SPEROS Memphis, Tennessee
Sigma Nu

SAM LEWERS STEPHENSON, JR. Whitehaven, Tennessee
Kappa Sigma

CAROLYN DAVIS TATE Tunica, Mississippi
Chi Omega

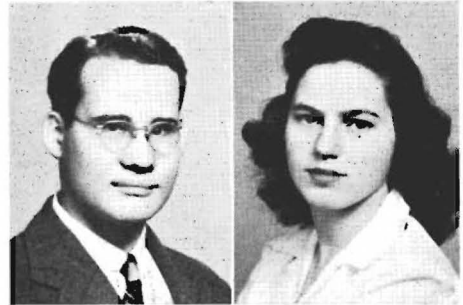
LOUISE LEMASTER THOMPSON Memphis, Tennessee
Alpha Omicron Pi

IRENE TRIFIATIS Bridgeport, Connecticut

EDITH CLARE WILLIAMS Memphis, Tennessee
Kappa Delta

JESSIE ADAMS WOODS Memphis, Tennessee
Chi Omega

EDITH ELIZABETH WRIGHT Memphis, Tennessee



SOPHOMORE CLASS OFFICERS

THOMAS TIDWELL President

HUGH MURRAY Vice-President

IMOGENE WILLIAMSON . Secretary-Treasurer



SOPHOMORES

MILTON CALDWELL ADDINGTON
Memphis, Tennessee

ANNE HOWARD BAILEY
Kappa Delta
Memphis, Tennessee

HENRY DAVID BALDRIDGE, JR.
Kappa Alpha
Memphis, Tennessee



MARY ANN BANNING
Chi Omega
Memphis, Tennessee

BEVERLY ELIZABETH BARRON
Alpha Omicron Pi
Memphis, Tennessee

LINDA MAE BEAMAN
Memphis, Tennessee



RUTH ALYNE BRYANT
Memphis, Tennessee

MORISON BUCK
Pi Kappa Alpha
Memphis, Tennessee

JEANNE PROTHRO CAREY
Chi Omega
Memphis, Tennessee



MARY LEE CONLEY
Kappa Delta
Ralls, Tennessee

JANE DAILEY
Chi Omega
Clinton, Missouri

SAM JOSEPH DENNEY
Sigma Alpha Epsilon
Milan, Tennessee



GERTRUDE EUGENIA DICKSON
Delta Delta Delta
Memphis, Tennessee

HAZELITA BLACK FARRIOR
Zeta Tau Alpha
Frostproof, Florida

RAYMOND BERSON FRYE
Sigma Alpha Epsilon
Memphis, Tennessee



SOPHOMORES



JOY JEANNE GALLIMORE
Zeta Tau Alpha
Greenfield, Tennessee

BETTY JANE GOOCH
Delta Delta Delta
Bells, Tennessee

HARRIET VIRGINIA GREENLESE
Alpha Omicron Pi
Memphis, Tennessee



MARGARET GUNTHER
Chi Omega
Memphis, Tennessee

ELIZABETH WEBER HARTLEY
Kappa Delta
Memphis, Tennessee

HENRY HEDDEN
Kappa Alpha
Memphis, Tennessee



KATHERINE HENDERSON
Germantown, Tennessee

EDWIN BARNEY HERRING
Kappa Sigma
Dundee, Mississippi

NOBLE HICKS
Sigma Nu
Dyersburg, Tennessee



HUBERT HODGSON
Sigma Alpha Epsilon
Memphis, Tennessee

WARREN EUSTIS HOOD
Sigma Alpha Epsilon
Lake Charles, Louisiana

GEORGANNE IRWIN HOWARD
Chi Omega
Lake Cormorant, Mississippi



MARY JANE HOWELL
Kappa Delta
Memphis, Tennessee

ANITA EUNICE HYDE
Delta Delta Delta
Memphis, Tennessee

RUFUS WILLIAM IRBY
Sigma Alpha Epsilon
Memphis, Tennessee

SOPHOMORES

ANNE RUDD JAMES
Delta Delta Delta
Memphis, Tennessee

WHARTON STEWART JONES
Sigma Alpha Epsilon
Memphis, Tennessee

WILLIAM EVERARDE JONES
Kappa Sigma
Tchula, Mississippi

WILLIAM WILKINS KENDALL
Pi Kappa Alpha
Memphis, Tennessee

HENRY HUNT LANIUS
Waterproof, Louisiana

MARY FRANCES LYNCH
Delta Delta Delta
Collierville, Tennessee

VIRGINIA MAUDE McGAUGHRAN
Memphis, Tennessee

ROBERT MANN, JR.
Sigma Alpha Epsilon
Memphis, Tennessee

DAVID GRAY MATTHEWS
Kappa Alpha
Nashville, Tennessee

JANE MILNER
Delta Delta Delta
Memphis, Tennessee

MARION LOUISE MORAN
Kappa Delta
Dresden, Tennessee

LUCY EMILY MORGAN
Zeta Tau Alpha
Coahoma, Mississippi

TOM MOORE NICHOLSON
Sigma Alpha Epsilon
Centerville, Alabama

HAYS ELLIOTT OWEN, JR.
Sigma Alpha Epsilon
Covington, Tennessee

MIGNON PRESLEY
Memphis, Tennessee



SOPHOMORES



CAROLYN PREWITT
Chi Omega
Memphis, Tennessee

STEVE PRIDGEN
Kappa Alpha
Memphis, Tennessee

HALCYON ROACH
Alpha Omicron Pi
Memphis, Tennessee



MINOR ROBERTSON
Chi Omega
Memphis, Tennessee

SHIRLEY ALICE SEAGLE
Alpha Omicron Pi
Memphis, Tennessee

ALICE HOGE SIVITER
Zeta Tau Alpha
Mt. Pleasant, Tennessee



CLYDE RUFUS SMITH, JR.
Kappa Sigma
Lepanto, Arkansas

EUNICE JANE SODERSTROM
Zeta Tau Alpha
Memphis, Tennessee

JOHN NICHOLLS SPAIN
Kappa Sigma
Memphis, Tennessee



HENRY BARR SPURRIER
Sigma Alpha Epsilon
Memphis, Tennessee

JESSE NEVILLE STEVENSON
Sigma Nu
Memphis, Tennessee

THOMAS TATE TIDWELL
Kappa Alpha
Memphis, Tennessee



ARCHIE TURNER, JR.
Memphis, Tennessee

FRANCES ANN TURRENTINE
Zeta Tau Alpha
Memphis, Tennessee

ROBERT PAUL TYSON
Sigma Alpha Epsilon
Memphis, Tennessee

SOPHOMORES

FRANCES STOCKLEY UHLHORN
Alpha Omicron Pi
Memphis, Tennessee

JAMES ALLEN WEST
Kappa Sigma
Memphis, Tennessee

BETTY JEAN WILKINSON
Delta Delta Delta
Memphis, Tennessee



IMOGENE MACLIN WILLIAMSON
Kappa Delta
Mason, Tennessee

MARIANNA KATHERINE WOODSON
Delta Delta Delta
Hot Springs, Arkansas



FRESHMAN CLASS OFFICERS

ROBERT AMIS President

TOMMY HOUSER Vice-President

SHIRLEY SCOTT Secretary-Treasurer



FRESHMEN

MARY LOUISE ADAMS
Columbia, Mississippi

MARY LOUISE ALMEDA
Delta Delta Delta
Memphis, Tennessee

ROBERT WALTER AMIS
Kappa Sigma
Dyersburg, Tennessee

LAURA ARCHER AYRES
Chi Omega
Alexandria, Louisiana

DEAN ADAMS BAILEY
Kappa Alpha
Memphis, Tennessee

BESSIE VIRGINIA BALLOU
Chi Omega
Memphis, Tennessee

PAUL WEISIGER BARRET, JR.
Sigma Alpha Epsilon
Kerrville, Tennessee

SARAH WHITE BARTH
Delta Delta Delta
Memphis, Tennessee

BETTY BLANTON BELK
Kappa Delta
Montreat, North Carolina

ALBERT ALFRED BENSABAT, JR.
Kappa Sigma
Memphis, Tennessee

PATRICIA JANE BIGGER
Alpha Omicron Pi
Memphis, Tennessee

RICHARD ASA BOLLING, JR.
Kappa Sigma
Cleveland, Mississippi

JAMES ARMISTEAD BOYD
Kappa Sigma
Atkinson, North Carolina

BOGARDUS SNOWDEN BOYLE, JR.
Sigma Alpha Epsilon
Memphis, Tennessee

ANN BRADSHAW
Alpha Omicron Pi
Memphis, Tennessee

VIRGIL LEON BRYANT, JR.
Kappa Sigma
Memphis, Tennessee

WILLIAM OLIVER BULLOCK
Kappa Sigma
Memphis, Tennessee

DOROTHY MILLER CHAUNCEY
Delta Delta Delta
Memphis, Tennessee



FRESHMEN



HUGH LAWRENCE CLARKE, JR.
Kappa Sigma
Brownsville, Tennessee

JOHN STUART COLLIER
Sigma Alpha Epsilon
Memphis, Tennessee

MOPSY CORTWRIGHT
Chi Omega
Rolling Fork, Mississippi



IMOGENE COVINGTON
Delta Delta Delta
Memphis, Tennessee

CHARLES LEON COX, JR.
Kappa Sigma
Memphis, Tennessee

HUGH HOWARD CRAWFORD
Kappa Sigma
Somerville, Tennessee



KATHARINE STRATTON CRAWFORD
Chi Omega
Memphis, Tennessee

JUNE CRUTCHFIELD
Delta Delta Delta
Memphis, Tennessee

ALEXANDER MARION CUNNINGHAM, JR.
Sigma Alpha Epsilon
Arlington, Tennessee



REZNEAT MILTON DARNELL, JR.
Memphis, Tennessee

BILLIE BROCK DAVIDSON
Sigma Alpha Epsilon
Greenfield, Tennessee

HUGH CLARK DAVIDSON, JR.
Montgomery, Alabama



HARREL LEON DAVIS, JR.
Memphis, Tennessee

EDWIN ROBINSON DEWEY
Sigma Alpha Epsilon
Memphis, Tennessee

JOHN PITMAN DOUGLAS, JR.
Sigma Alpha Epsilon
Arlington, Tennessee



TOM HARRIAL DURHAM, JR.
Kappa Sigma
Memphis, Tennessee

WILLIAM FREDERICK ELBRECHT, JR.
Memphis, Tennessee

THEODORE SESSINGHAUS ELIOT, JR.
Memphis, Tennessee

FRESHMEN

WILLIAM MARSHALL FLACK
Sigma Alpha Epsilon
Memphis, Tennessee

MARJORY MAE GARDNER
Kappa Delta
Memphis, Tennessee

VIRGINIA FRANCES GIBBINS
Zeta Tau Alpha
Shreveport, Louisiana

JOHN McRAE GIDEON
Kappa Sigma
Memphis, Tennessee

ELIZABETH RODES GODDARD
Zeta Tau Alpha
Covington, Tennessee

JAMES NEELY GRANT, JR.
Sigma Alpha Epsilon
Memphis, Tennessee

MARTHA JO GULO
Delta Delta Delta
Memphis, Tennessee

ANNABELLE LEIGH HALL
Kappa Delta
Memphis, Tennessee

DOROTHY FAY HALL
Zeta Tau Alpha
Memphis, Tennessee

MARY BETH HANSEN
Alpha Omicron Pi
Memphis, Tennessee

JOHN WILSON HARRIS, III
Pi Kappa Alpha
Memphis, Tennessee

JEAN CLARK HARTZELL
Kappa Delta
Memphis, Tennessee

DOUGLAS WEBB HAYS
Kappa Sigma
Senatobia, Mississippi

JACK HILZHEIM
Kappa Sigma
Memphis, Tennessee

ESTELLE MAIRE HINSON
Kappa Delta
Memphis, Tennessee

HERBERT WILSON HODGES
Kappa Sigma
Coila, Mississippi

RUTH MARION HOLLENBERG
Chi Omega
Memphis, Tennessee

JEANETTE HORD
Delta Delta Delta
Memphis, Tennessee



FRESHMEN



THOMAS WILLIAM HOUSER
Kappa Sigma
Dyersburg, Tennessee

ELIZABETH IRWIN HOWARD
Chi Omega
Lake Cormorant, Mississippi

MARTHA WINIFRED HUNTER
Delta Delta Delta
Memphis, Tennessee

VADIS NORRIS JETER
Alpha Omicron Pi
Memphis, Tennessee

SARA FRANCES JOHNSTON
Zeta Tau Alpha
Memphis, Tennessee

FRED L. KELLEY, JR.
Kappa Sigma
Steele, Missouri

NANCY NELL KIZER
Chi Omega
Milan, Tennessee

NATHALIE DAVANT LATHAM
Chi Omega
Memphis, Tennessee

ANDREW JACKSON LAWRENCE
Kappa Alpha
Tulsa, Oklahoma

BETTY LAY
Delta Delta Delta
Homer, Louisiana

MARGARET ANN LYNE
Olmstead, Kentucky

FRANK MAULDIN McCLAIN
Kappa Alpha
Memphis, Tennessee

WILLIAM JAMES McFADDEN
Alpha Tau Omega
Tupelo, Mississippi

CLYDE AUSTIN McLEOD
Kappa Sigma
New Orleans, Louisiana

JOHN BOYD MAIZE, JR.
Germantown, Tennessee

PATTIE PAGE MATHEWES
Chi Omega
Memphis, Tennessee

LARCHE HARRIS MICHAUX
Kappa Sigma
Greenwood, Mississippi

ANDREW HERRON MILLER
Sigma Alpha Epsilon
Memphis, Tennessee

FRESHMEN

ROBERT CAREY MILLER
Kappa Sigma
Memphis, Tennessee

CHARLES RANDALL MIMS
Kappa Alpha
Brownsville, Tennessee

JANE ELIZABETH MITCHELL
Alpha Omicron Pi
Hot Springs, Arkansas

PAUL SIDNEY MOORHEAD
North Little Rock, Arkansas

ELVA JUNE MORROW
Kappa Delta
Memphis, Tennessee

PHIL ELVIN ORPET, JR.
Kappa Alpha
Memphis, Tennessee

ROBERT WILLIAM ORR
Sigma Alpha Epsilon
Memphis, Tennessee

JOSEPH HUNTER PHILLIPS
Sigma Alpha Epsilon
Memphis, Tennessee

PATRICIA ANN QUINN
Alpha Omicron Pi
Memphis, Tennessee

BETH RAINES
Forth Worth, Texas

SUZANNE SCRUGGS RANSOM
Delta Delta Delta
Memphis, Tennessee

WILLIAM WADE RANSON
Gallion, Alabama

MARY NEIL REID
Chi Omega
Memphis, Tennessee

GORDON HINSEY ROWE, JR.
Natchez, Mississippi

BRYCE FREEMAN RUNYON
Sigma Alpha Epsilon
Clarksville, Tennessee

DOROTHY NELL SCHRODT
Memphis, Tennessee

SHIRLEY SCOTT
Alpha Omicron Pi
Memphis, Tennessee

GLORIA CHARLOTTE SHEFSKY
Memphis, Tennessee



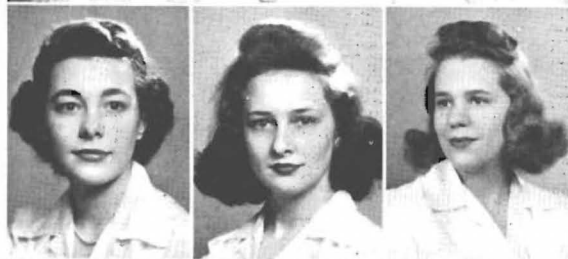
FRESHMEN



MARY HARRIET SILLIMAN
Chi Omega
Luxora, Arkansas

BETTY JOY SMITH
Delta Delta Delta
Memphis, Tennessee

KATHARINE RIPLEY SMITH
Alpha Omicron Pi
Macon, Georgia



SARA VIRGINIA SPARR
Kappa Delta
Memphis, Tennessee

DENA STOLTZENBERG
Delta Delta Delta
Memphis, Tennessee

JANE SNOWDEN TREADWELL
Alpha Omicron Pi
Memphis, Tennessee



KATHERINE ROBERTA TREANOR
Kappa Delta
Memphis, Tennessee

STANLEY HAMILTON TREZEVANT, JR.
Sigma Alpha Epsilon
Memphis, Tennessee

JANE DINWIDDIE WADDELL
Memphis, Tennessee



VIRGINIA WILBOURN WADE
Delta Delta Delta
Memphis, Tennessee

WALTER JAMES WADE
Kappa Alpha
Memphis, Tennessee

MARGARET BRUCE WALTHAL
Zeta Tau Alpha
Memphis, Tennessee



MARY JEAN WATSON
Kappa Delta
Memphis, Tennessee

BETTY BYNUM WEBB
Fort Worth, Texas

MELVIN SEYMOUR WEINBERG
St. Louis, Missouri



HOWARD ALLEN WHITSITT
Sigma Alpha Epsilon
Memphis, Tennessee

MARTHA BERNIECE WIGGINS
Kappa Delta
Memphis, Tennessee

JAMES KENDALL WILLIAMS
Gadsden, Tennessee

FRESHMEN

VIRGINIA AUGUSTA WILLIAMS
Macon, Georgia

FLORA HUNTER WILLIAMSON
Chi Omega
Memphis, Tennessee

JAMES FLAVEL WILSON
Sigma Alpha Epsilon
Memphis, Tennessee

MARY BETH WILSON
Chi Omega
Memphis, Tennessee

FLOY WOOTEN
Alpha Omicron Pi
Memphis, Tennessee

MARY ANN WYSE
Kappa Delta
Memphis, Tennessee



SENIORS

Memphis, Tennessee
Memphis, Tennessee
Memphis, Tennessee

JUNIORS

Memphis, Tennessee
Memphis, Tennessee
Memphis, Tennessee
Memphis, Tennessee
Memphis, Tennessee
Blytheville, Arkansas
Gallatin, Tennessee
Memphis, Tennessee
Memphis, Tennessee
Trumann, Arkansas
Dresden, Tennessee
Memphis, Tennessee
Dyersburg, Tennessee

SOPHOMORES

Memphis, Tennessee
Memphis, Tennessee
Jonesboro, Arkansas
Montgomery, Alabama
Alligator, Mississippi
Pulaski, Tennessee
Memphis, Tennessee
Hamburg, Arkansas
Memphis, Tennessee
Memphis, Tennessee
Memphis, Tennessee
Jackson, Tennessee
Gallatin, Tennessee
Memphis, Tennessee
Darien, Connecticut
Earle, Arkansas
Memphis, Tennessee
Memphis, Tennessee
Tunica, Mississippi

MARYE ELIZABETH WORRAH

FRESHMEN

[illegible]

MISS SOUTHWESTERN

Typical of Southwestern Co-Eds is "Miss Southwestern," as chosen each spring by popular vote of the student body. She gains her distinction by virtue of outstanding personality, friendliness, sincerity and integrity. This year the title goes to MISS LOUISE HOWRY.



Miss Louise Howry

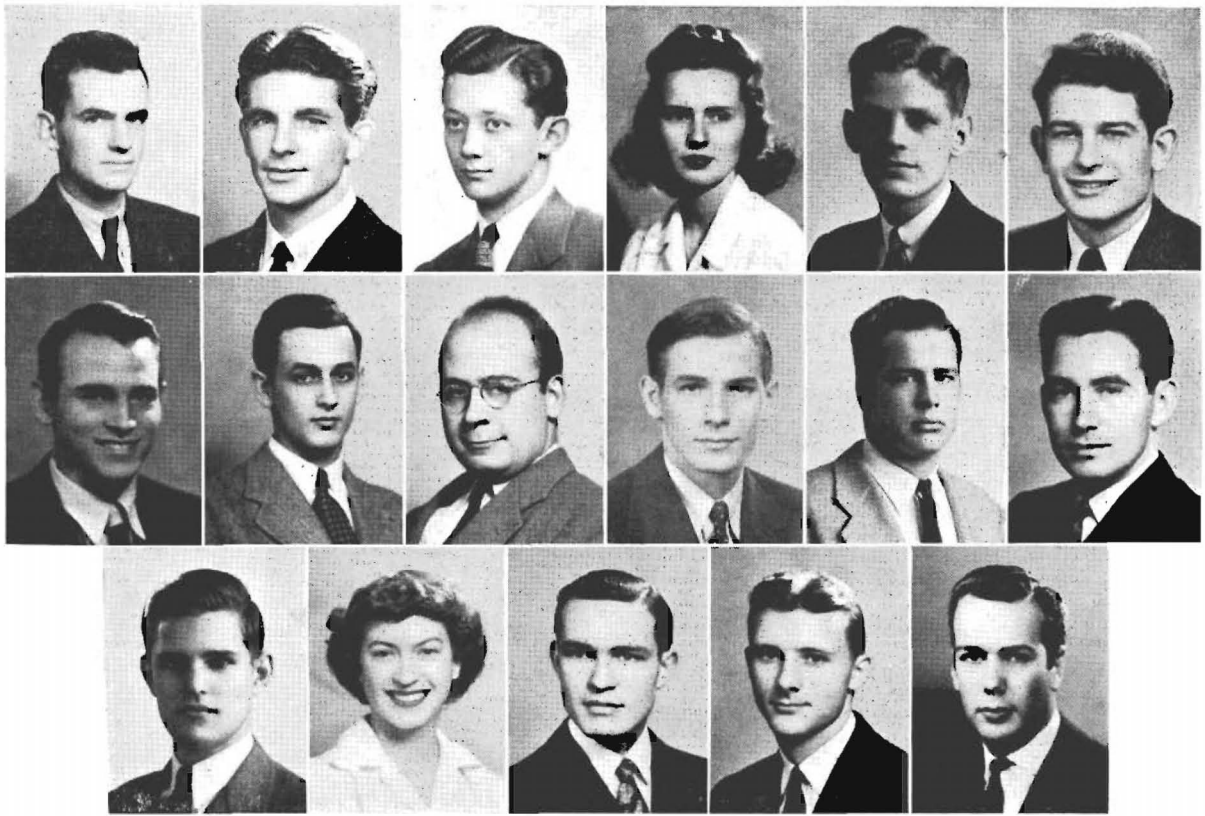


Organizations



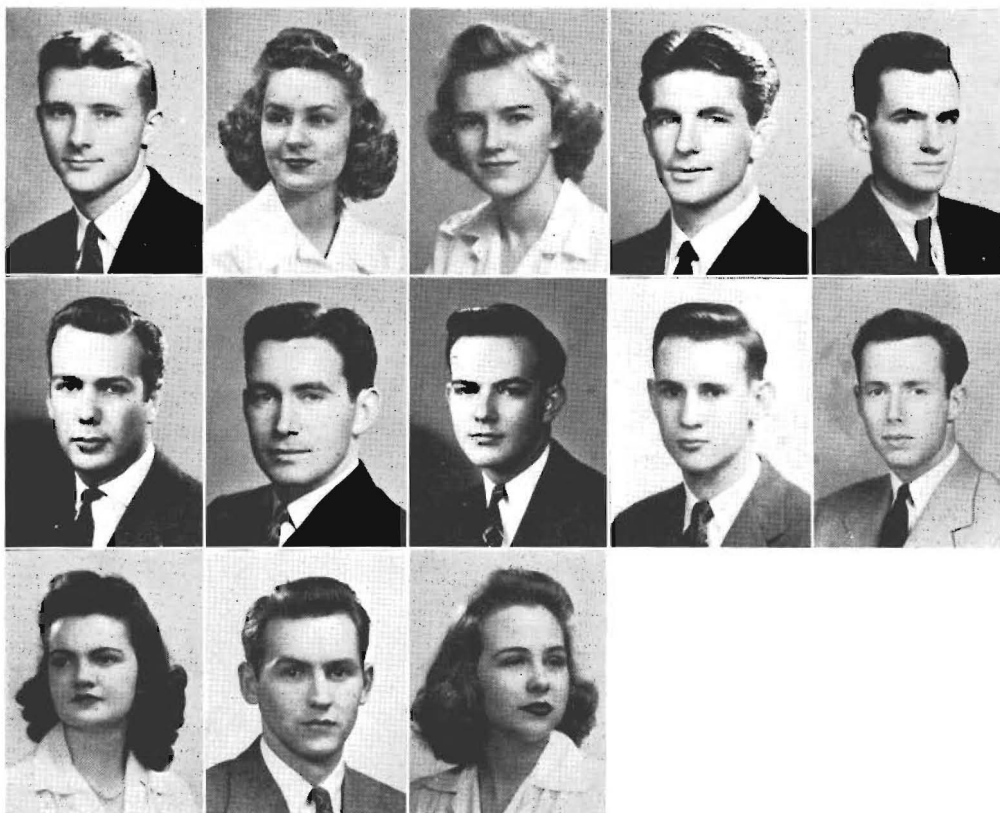


THE STUDENT COUNCIL



President	JULIAN NALL
President (First Semester)	ROBERT BEASLEY
Vice-President	FRANK KENNEDY
Vice-President (First Semester)	JULIAN NALL
Secretary-Treasurer	MILTON MATHEWES
President of Senior Class	ALLEN HILZHEIM
President of Junior Class	FRANK KENNEDY
President of Sophomore Class	TOM TIDWELL
President of Freshman Class	BOB AMIS
Editor of the Lynx	JOHN WHITSITT
Editor of the Sou'wester	BOB GOOSTREE
President of Publications Board	LEWIS WELLFORD
President of Torch	MILTON MATHEWES
President of Omicron Delta Kappa (First Semester)	EMMETT KELLY
President of Omicron Delta Kappa	BILL ALLEN
President of Men's Panhellenic Council	GEORGE CASE
President of Women's Panhellenic Council	LOUISE HOWRY
President of Women's Undergraduate Society (not pictured)	GLADYS MOORE ELLIS
President of Southwestern Players	JAMES MCNEES
President of Christian Union Cabinet	RAY ALLEN
President of Service Club	ALLEN HILZHEIM
President of Elections Commission	ROLAND JONES

The Student Council is the official and representative organization of the student body. It discusses relations between student organizations and presents matters for the consideration of the student body. It helps to shape student opinion, and serves as a medium between the students and the faculty.



H O N O R C O U N C I L

RAY ALLEN, Junior President

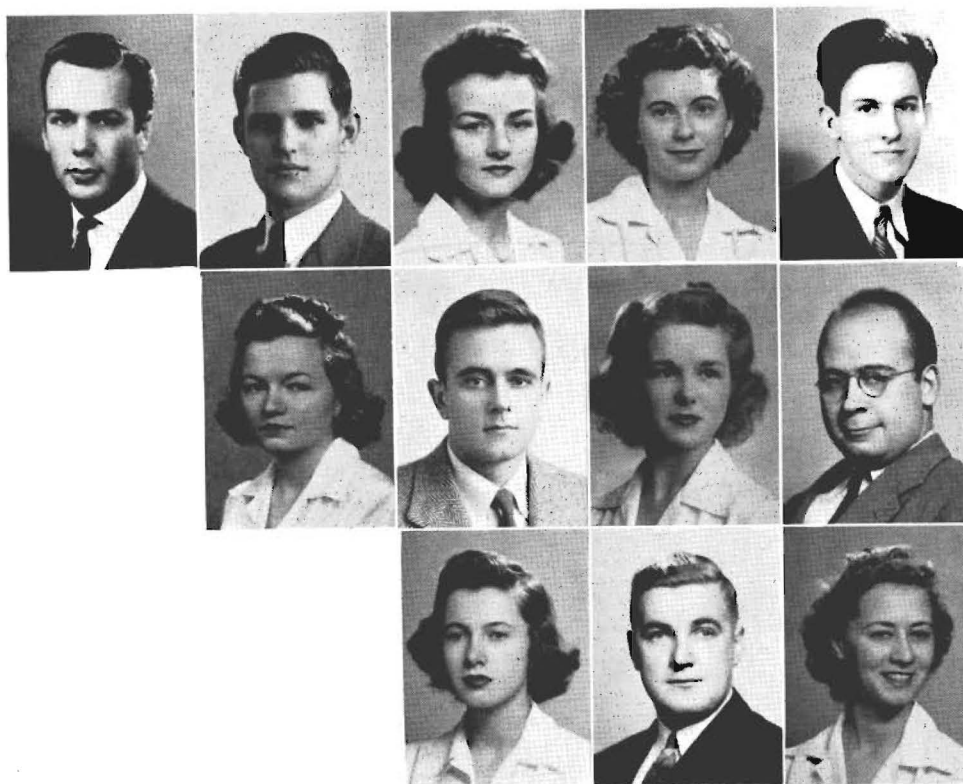
PEGGY HUGHES, Junior Vice-President

TOMMIE JEAN HAYGOOD, Senior Secretary

BOB BEASLEY, Senior
 JULIAN NALL, Senior
 ROLAND JONES, Senior
 WILLIAM ALLEN, Senior
 ALFRED CANON, Junior
 SAM STEPHENSON, Junior
 SAM DENNEY, Sophomore
 LOUISE MORAN, Sophomore
 HUGH MURRAY, Sophomore (not pictured)
 FRED KELLY, Freshman
 NANCY KIZER, Freshman

The Honor Council, composed of thirteen representatives elected annually by the classes, has as its purpose to maintain the Honor System on the campus. It is vested with full authority to act as a disciplinary body in cases of violation of the system.

ELECTIONS COMMISSION



ROLAND JONES President
Stray Greek

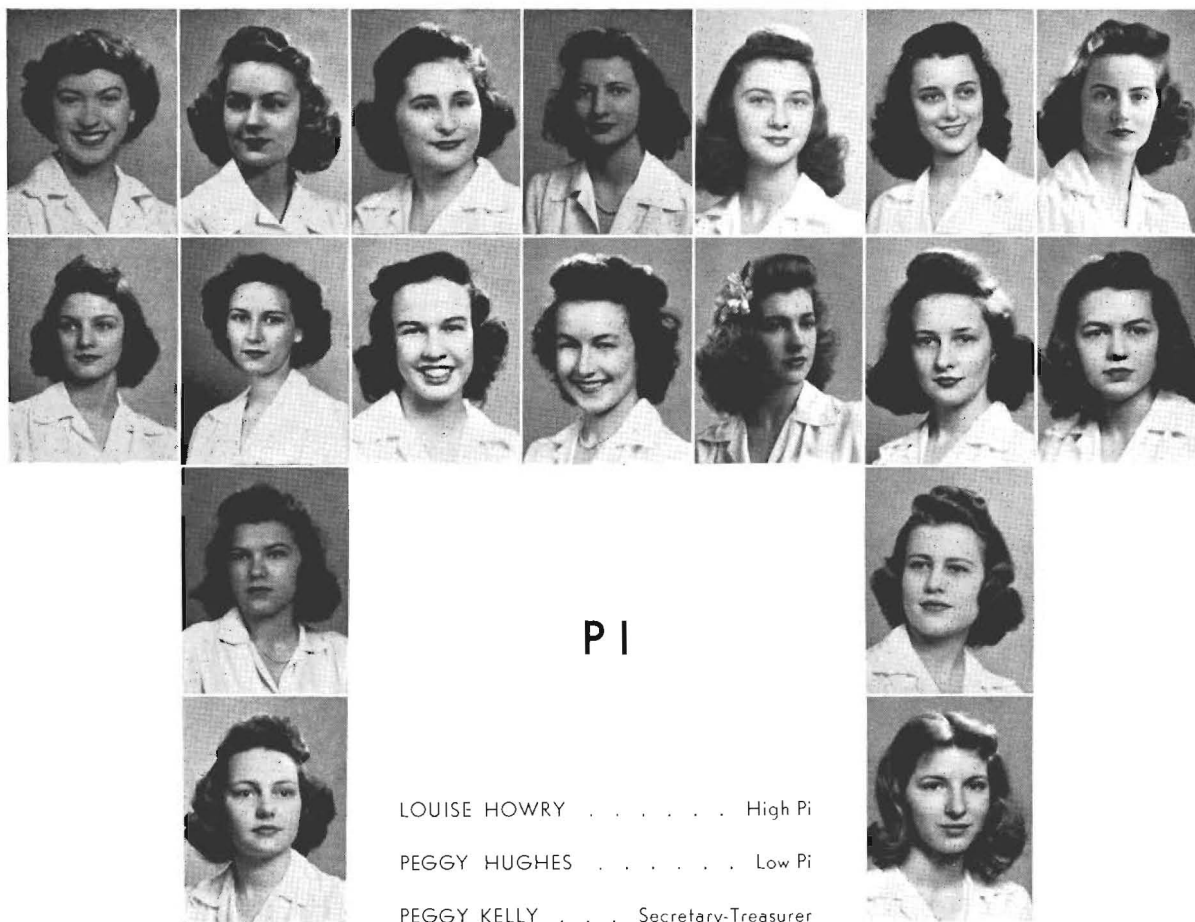
GEORGE CASE Vice-President
Alpha Tau Omega

MARJORIE MOORHEAD Secretary
Non-Sorority



JANE PEETE Chi Omega
WARNER HODGES Pi Kappa Alpha
MARY VIRGINIA SMITH Zeta Tau Alpha
MALCOLM HINSON Kappa Alpha
MABEL FRANCIS Tri-Delta
ROBERT GOOSTREE Sigma Nu
ELIZABETH HINCKLEY Alpha Omicron Pi
JACK MILLS Sigma Alpha Epsilon
MARY ANN GARMON Kappa Delta
ALLEN HILZHEIM Kappa Sigma

The Elections Commission is composed of one representative from each of the sororities and fraternities and the non-fraternity and non-sorority groups. Its purpose is to insure fair student elections and to penalize any unethical actions by individuals or organizations.



PI

LOUISE HOWRY High Pi

PEGGY HUGHES Low Pi

PEGGY KELLY Secretary-Treasurer

MARY NEIL REID

MARY NEW

AGNES ANN MING

PATTY RADFORD

ALLEN FAUNTLEROY

FRANCES ANN TURRENTINE

JANE MILNER

JEAN DICKSON

SHIRLEY SCOTT

DENA STOLTZENBERG

JUNE CRUTCHFIELD

VIRGINIA BALLOU

JESSIE WOODS

IMOGENE WILLIAMSON

KATHERINE SMITH



Pi, a national intersorority organization, was founded at Randolph-Macon in 1901 and is designed to promote friendly relations among the various sororities on the campus. Social functions are given from time to time and each Tuesday the members wear green and white, the colors of the group.

S T A B

ELIZABETH HINCKLEY President

GEORGANNE BEAUMONT . Vice-President

MILTON MATHEWES . . Secretary-Treasurer



JANE BIGGER

MOPSY CORTRIGHT

JOY GALLIMORE

BETTY JEAN WILKINSON

LOUISE MORAN

MARIANNE GARMON

MARION McKEE

MARY ANN BANNING

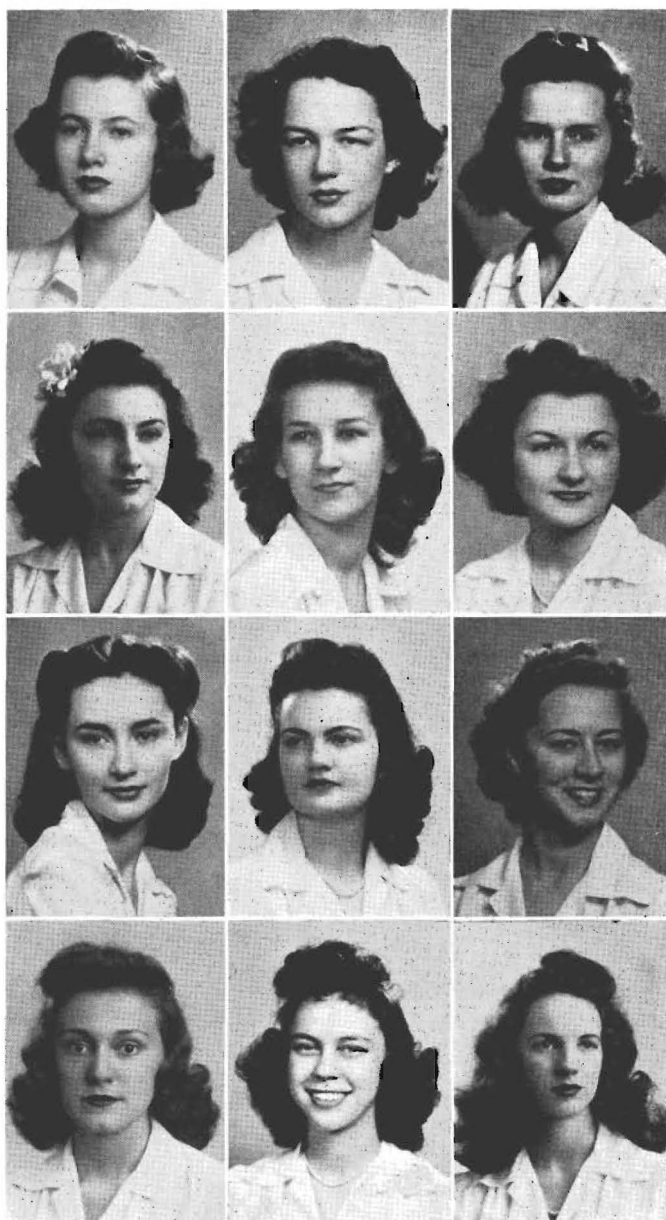
SHIRLEY SEAGLE

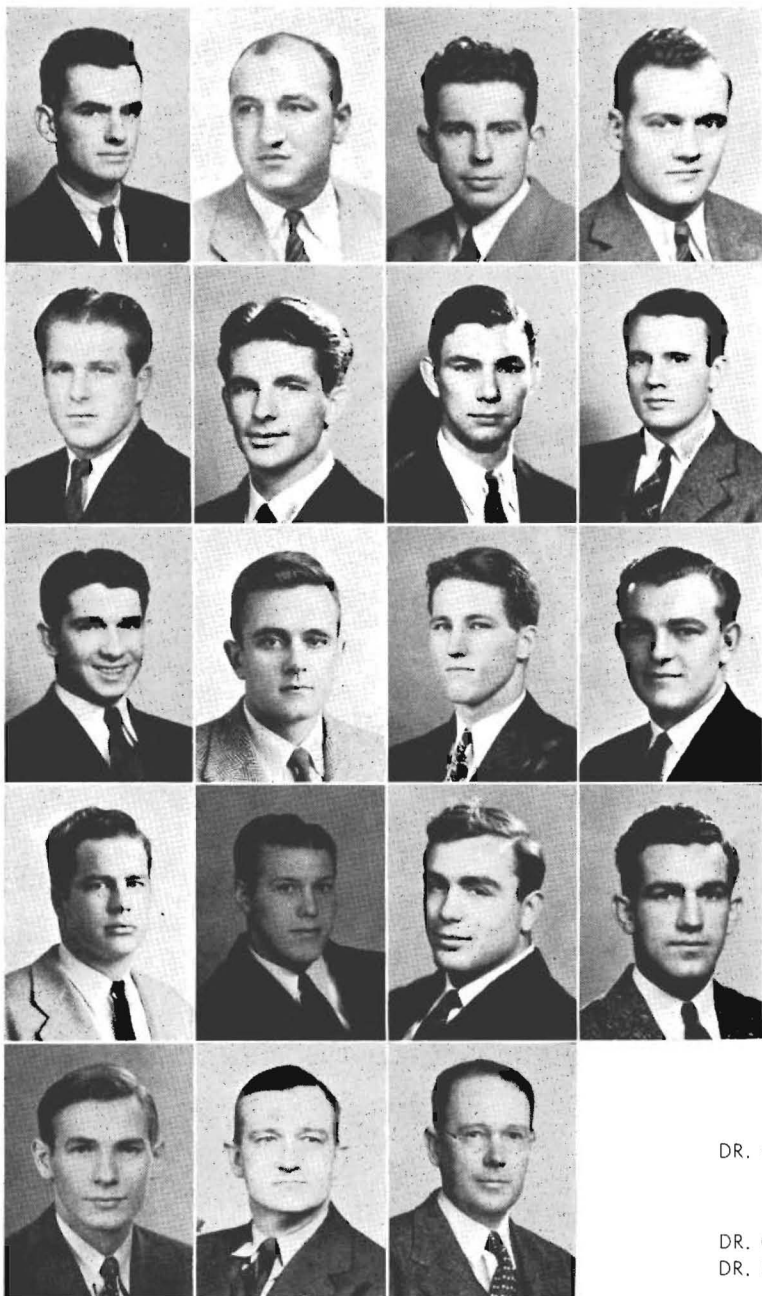
PATTY PAGE MATHEWES

JANET KELSO



S.T.A.B., founded in 1899 at Randolph-Macon, is a society which strives to promote friendly relations between sororities. Its membership is limited to thirteen, twelve brunets and one blonde. Each Friday these members appear on the campus in red and white.





"S" CLUB



JULIAN NALL President
Basketball

FLEET EDWARDS Vice-President
Football

WILLIAM WOOTEN Secretary
Golf

JAMES ANDREWS Football
RAY BEARDEN Track, Football
ROBERT BEASLEY Football
JAMES COLLIER Tennis, Basketball
BILLY DOWDLE Football, Basketball, Track
H. C. EARHART Football
MALCOLM HINSON Tennis
KENNETH HOLLAND Football, Basketball
JAMES ISING Football
EMMETT KELLY Football
WILLIAM McCLURE Football, Basketball
CLYDE MALONE Football
WILLIAM SPEROS Track, Football
LEWIS WELLFORD Tennis, Basketball, Track

NOT PICTURED

JACK WYATT Football, Basketball
HAYS OWEN Basketball
CLYDE McLEOD Basketball



HONORARY

DR. C. L. BAKER DR. W. R. ATKINSON

NOT PICTURED

DR. OGDEN BAINE MR. JOHN ROLLOW
DR. R. P. STRICKLER MR. CLYDE PATTON
HERVEY CONWAY



The "S" Club is an honorary organization composed of all the men who have earned a letter in any one of the inter-collegiate sports in which Southwestern takes part.

Y
W
C
A



C
A
B
I
N
E
T

KATHARINE MILLER	President.
MARION McKEE	Vice-President
TOMMIE JEAN HAYGOOD	Secretary
VIRGINIA BRITTINGHAM	Treasurer
PEGGY KELLY	Social Service
ROSELLA HILL	Devotional
BETTY EZELL (not pictured)	Art and Publicity
EMILY MORGAN	Public Relations
LOUISA McLEAN	Music
AGNES ANN MING	Social Activities

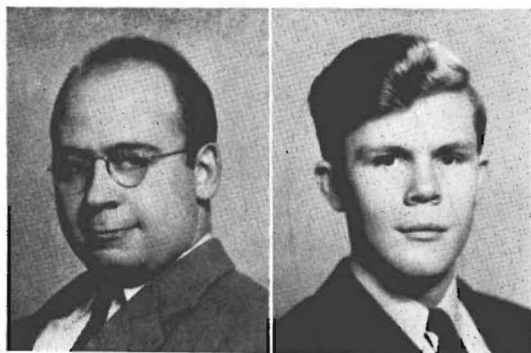
ADVISERS

MRS. C. L. TOWNSEND

MRS. CHAS. E. DIEHL

MRS. OGDEN BAINE

The Y.W.C.A. has a three-fold purpose: "to realize full and creative life through a growing knowledge of God, to have a part in making this life possible for all, and to promote friendship among the students and cooperation in campus activities." It endeavors to aid the administration with the orientation of new students and sponsors evening devotionals in Evergreen Hall.

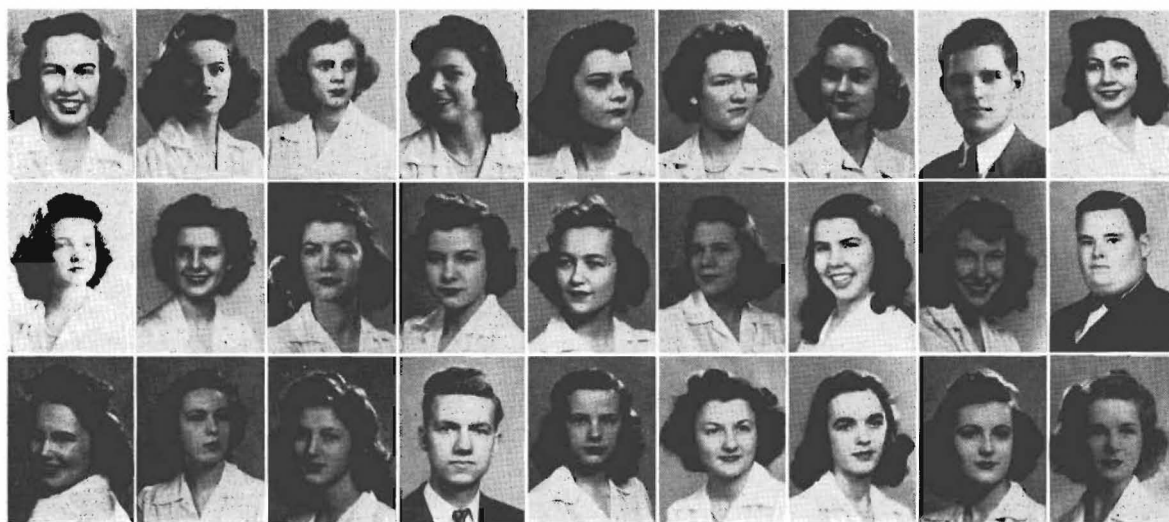


THE SOU'WESTER

ROBERT GOOSTREE Editor

MORGAN FOWLER Business Manager

The Sou'wester is the weekly news publication of the student body.

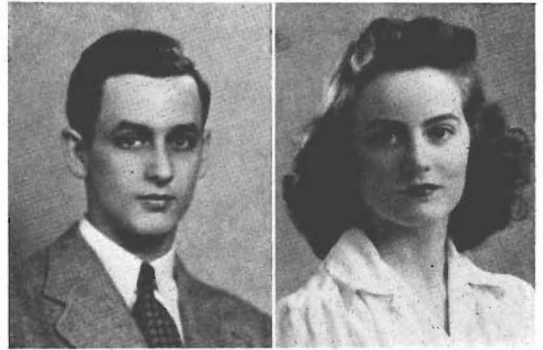


JANE MILNER
 PATTY RADFORD
 SUE POTTS
 SCOTTIE BOSTICK
 JANET KELSO
 LOUISE CLARKE
 PEGGY HUGHES
 GEORGE CASE
 LOUISA McLEAN

KATHARINE MILLER
 KATHERINE MARTIN
 MARIANNE McCALLA
 FLORA WILLIAMSON
 VIRGINIA WADE
 JANE TREADWELL
 SARAH BARTH
 BILL RANSOM
 HERVEY CONWAY

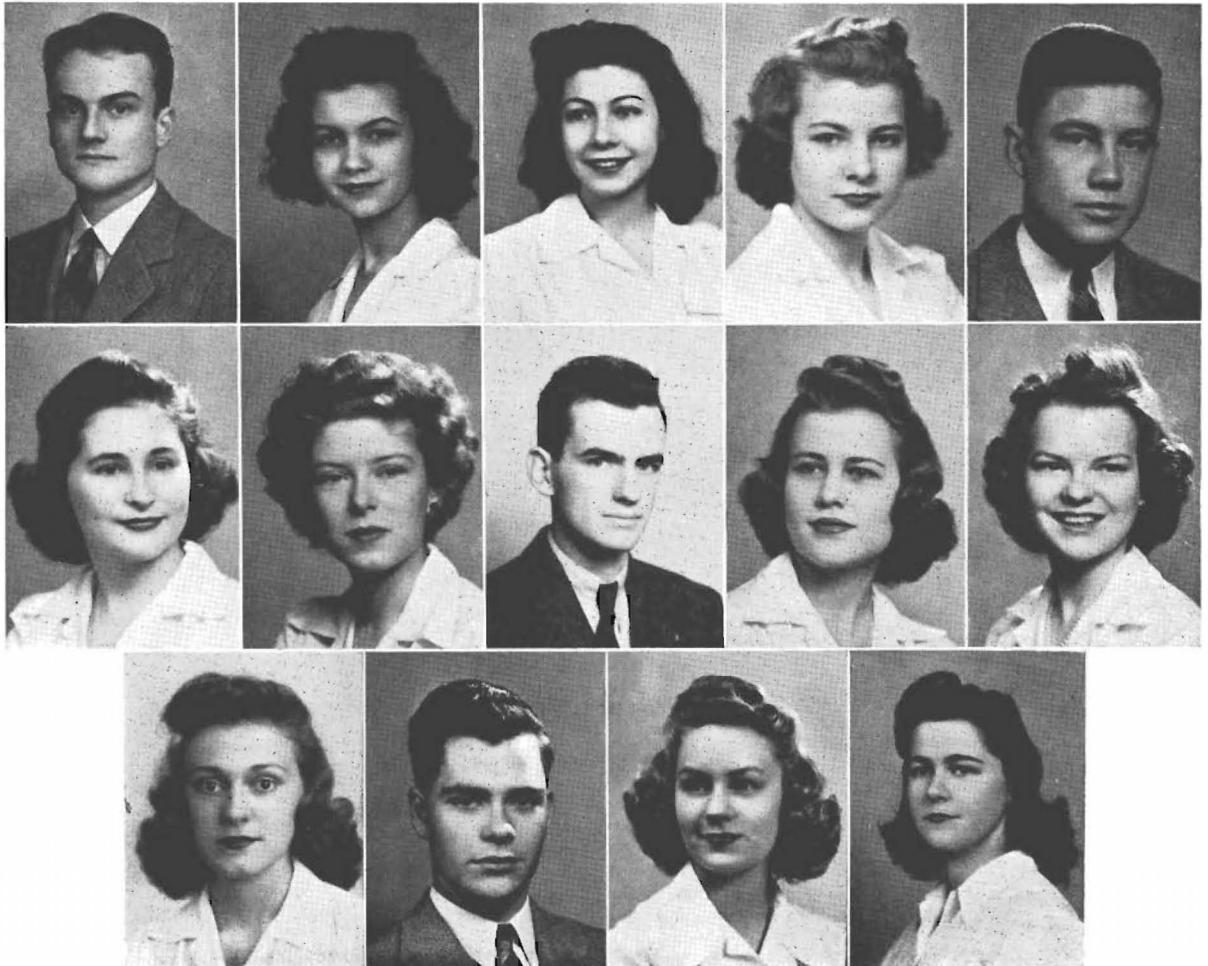
MARTHA JO GULO
 SALLIE JOHNSTON
 DOROTHY CHAUNCEY
 JAMES EDWARDS
 FLOY WOOTEN
 JOY GALLIMORE
 DEMETRA PATTON
 JANE MITCHELL
 MABEL FRANCIS

THE LYNX



JOHN WHITSITT Editor and Business Manager
 PATTY RADFORD Assistant Editor

The Lynx is the Southwestern Annual Publication.

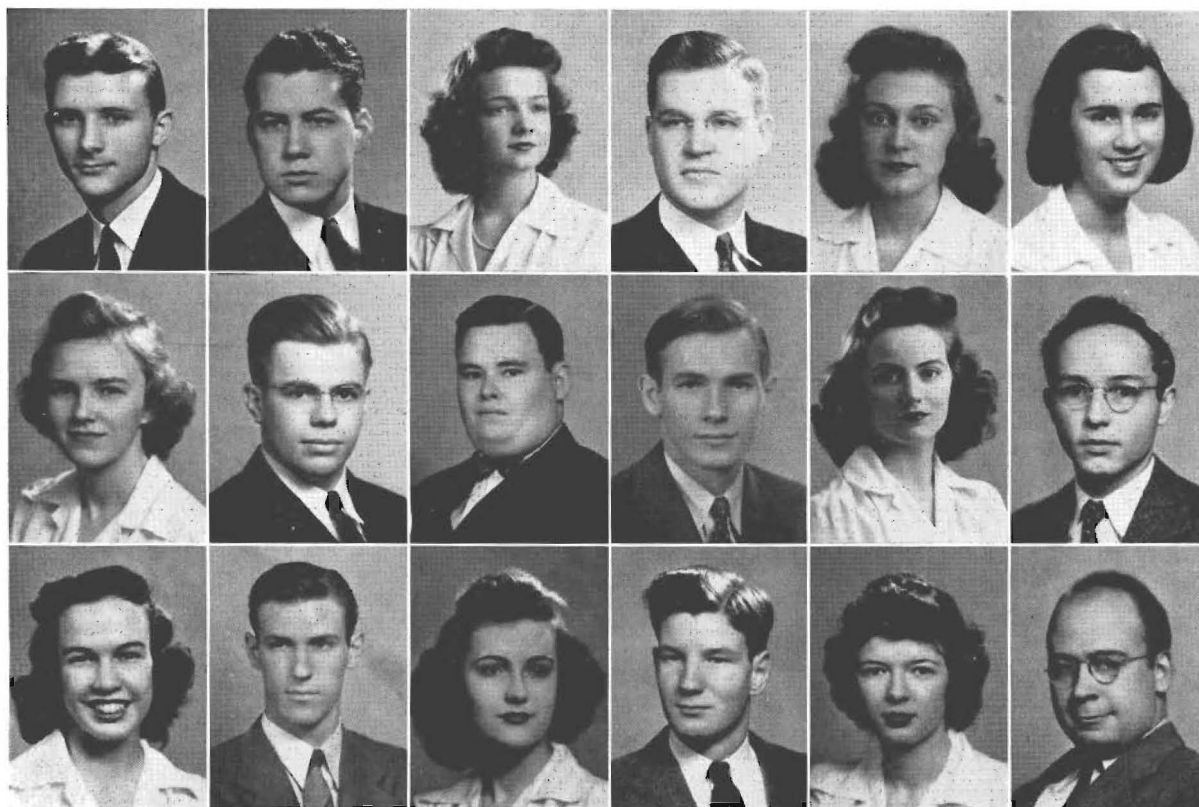


SNOWDEN BOYLE
 JUNE MORROW
 LOUISA McLEAN
 FLORA WILLIAMSON
 CLYDE McLEOD

PEGGY KELLY
 MARY HUNTER
 JULIAN NALL
 JESSIE WOODS

EMILY MORGAN
 MARION McKEE
 GEORGE MORROW
 PEGGY HUGHES
 HALCYON ROACH

THE CHRISTIAN UNION CABINET



RAY ALLEN	President
CHEVES LIGON	President (First Semester)
KATHARINE MILLER	Secretary
DR. T. E. HILL	Faculty Adviser

MARION McKEE
 VIRGINIA BRITTINGHAM
 TOMMIE JEAN HAYGOOD
 JOE McGEHEE

HERVEY CONWAY
 LEWIS WELLFORD
 PATTY RADFORD
 CHAM CANON
 BOB GOOSTREE

JANE MILNER
 HAYS OWEN
 JANE MITCHELL
 SANDY CUNNINGHAM

NOT PICTURED

GLADYS MOORE ELLIS

BILL RAMSAY

The Christian Union Cabinet is made up of the officers of those groups on the campus which are strictly religious, the Ministerial Club, and the Y.W.C.A. In addition, eight persons are selected from the student body at large. The Cabinet directs student religious activities, and each year sponsors a week of prayer and consecration.

THE CANTERBURY CLUB

LOUISE CLARKE President
BOBBY MANN Vice-President
MILTON MATHEWES . . Secretary-Treasurer



JESSIE WOODS Chaplain
JANICE WILLIAMS . . Program Chairman
DR. J. H. DAVIS Faculty Adviser

MARY ANN BANNING
MARY FRANCES LYNCH
LINDA BEAMAN
CAROLYN TATE
DICK BOLLING
JANE WADDELL
IMOGENE WILLIAMSON
MIMI REID
LA NOUE PRITCHARD
MARY NEW
MARY JEAN WATSON
KATHERINE SMITH
BETTY LAY
SALLY JOHNSTON
ANNABELLE HALL
NEELY GRANT
JANE ANDERSON

MIGNON PRESLEY
JACK HILZHEIM
FRANK McLAIN
BEVERLY BARRON
JANE MILNER
ALLEN FAUNTLEROY
VIRGINIA WADE
MARY BETH WILSON
FLORA WILLIAMSON
FRANCES SCOTT BOSTICK
SARAH BARTH
JOHN NORTHCROSS
JEAN HARTZELL
DEMETRA PATTON
NANCY KIZER
MARY HARRIET SILLIMAN

AGNES ANN MING
SHIRLEY SCOTT
PEGGY WALTHAL
JANE BIGGER
SNOWDEN BOYLE
FRANK WHITE
MARJORY GARDNER
HUNTER PHILLIPS
MARY ANN WYSE
ROBERTA TREANOR
SUE POTTS
PATSY PAGE MATHEWES
LOUISE HOWRY
PEGGY HUGHES
MARION McKEE
BETTY HOWARD
GEORGANNE HOWARD

The purpose of the Canterbury Club is to promote worship, fellowship, study, and service, to bring students together irrespective of religious affiliations, to discuss problems affecting the college student and the relation of religion to everyday life. Meetings are held twice a month at which various ministers of the city lead the discussions.

THE NITIST CLUB

President GEORGE CASE
 Vice-President JOHN WHITSITT
 Secretary-Treasurer ROBERT GOOSTREE

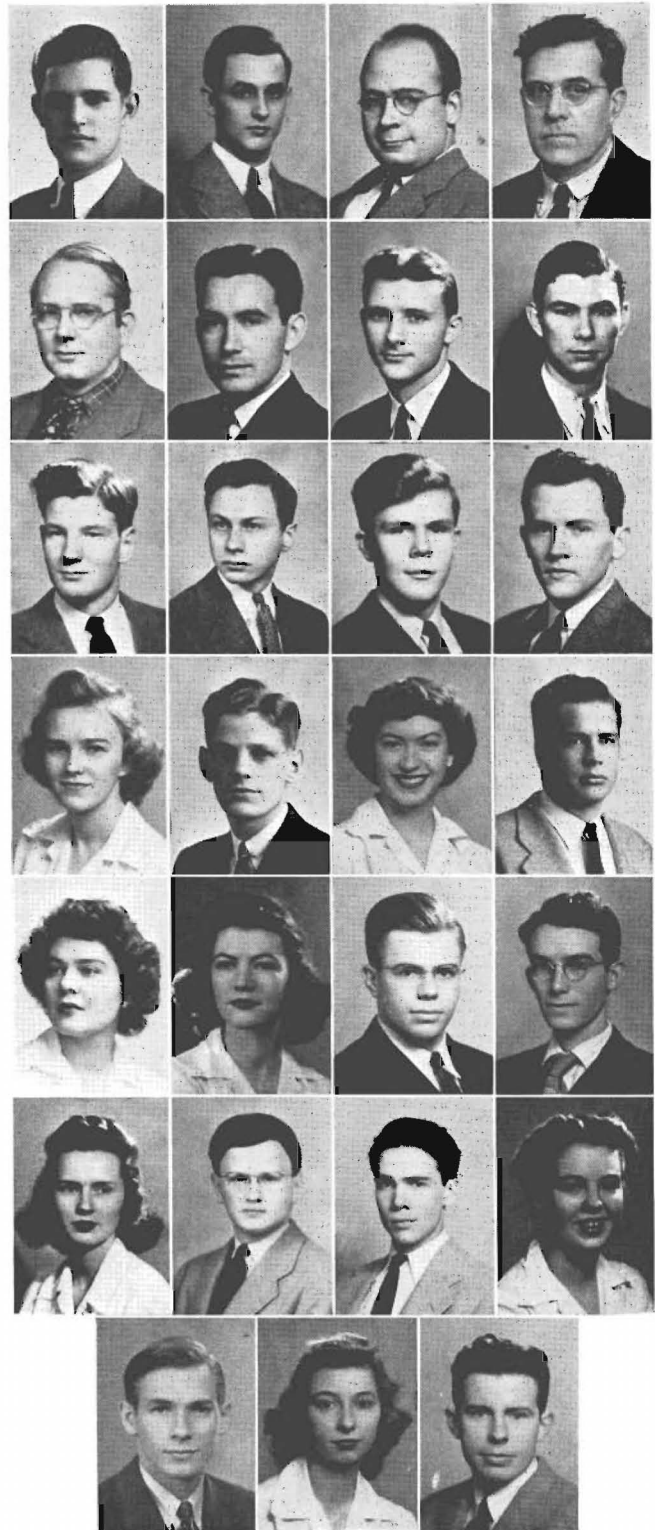
DR. A. P. KELSO	EMMETT KELLY
DR. J. H. DAVIS	LAURA LAKE
WILLIAM ALLEN	MARIANNE McCALLA
RAY ALLEN	JOSEPH McGEHEE
JIMMIE COLLIER	EDGAR McFADDEN
A. M. CUNNINGHAM	MILTON MATHEWES
JOHN DOUGLAS	J. C. MITCHENER
MORGAN FOWLER	JOHN NORTHCROSS
VANCE GILMER	DOROTHY SOUTH
TOMMIE JEAN HAYGOOD	LEWIS WELLFORD
ALLEN HILZHEIM	BERNIECE WIGGINS
LOUISE HOWRY	BILL WOOTEN

NOT PICTURED

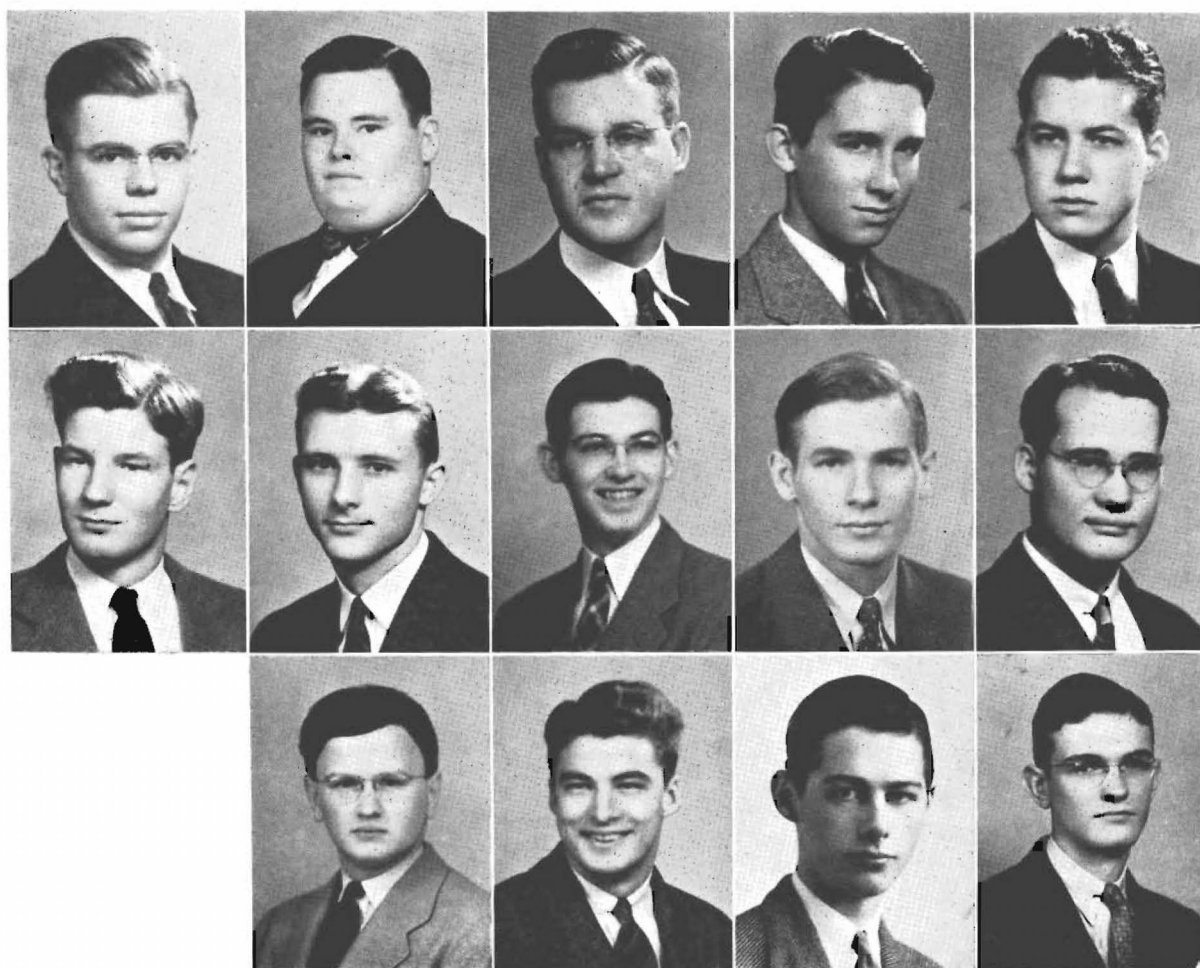
STRATTON DANIEL	DONALD MacGUIRE
EDWIN HERRING	HUGH MURRAY
PERRIN LOWERY	WILLIAM RAMSAY



The Nitist, or Carnegie International Relations Club, is made up of those who are interested in discussing current world problems. At its bi-monthly meetings some member reads a paper on a timely topic. This is followed by an open forum of general discussion. Membership is exclusive and is by invitation only.



THE MINISTERIAL CLUB



JOSEPH McGEHEE	President
WILLIAM RAMSAY (not pictured)	Vice-President
HERVEY CONWAY	Secretary-Treasurer

DR. THOMAS E. HILL	RAY ALLEN	J. C. MITCHENER
JAMES McFADDEN	GORDON ROWE	MILLARD MILLER
CHEVES LIGON	LEWIS WELLFORD	FRANK McLAIN
A. M. CUNNINGHAM	EDWARD RHOADES	ARCHIE TURNER

	NOT PICTURED	
WARD BREIDENTHAL		HOMER LEE HOWIE
ERNEST FLANIKEN	DONALD MacGUIRE	HOWARD HURT

Membership in the Ministerial Club includes not only those students studying for the ministry, but also those interested in discussing religious and social problems of the day. The club supports all religious activities on the campus and frequently holds devotional services at various institutions in the city.



NOT PICTURED

The Student Service Club was founded in 1936 in order to stimulate interest in college activities by decorating and ushering at inter-collegiate contests, welcoming new students, furnishing transportation for visitors, sponsoring the Student Directory, and serving in any other possible way. Regular membership is limited to two members from each fraternity and from the non-fraternity group.

CHI BETA PHI



JULIAN NALL President

ED ADAMS Vice-President

DOTTIE GILL Secretary-Treasurer

MARION SLUSSER

JAMES EDWARDS

MARION McKEE

ROLAND JONES

JAMES ANDREWS

DAVID BALDRIDGE

TOMMIE JEAN HAYGOOD

PROF. M. L. MacQUEEN

PROF. C. L. BAKER

PROF. OLIVER YONTS

NOT PICTURED

FRANK ELBY

HUGH MURRAY

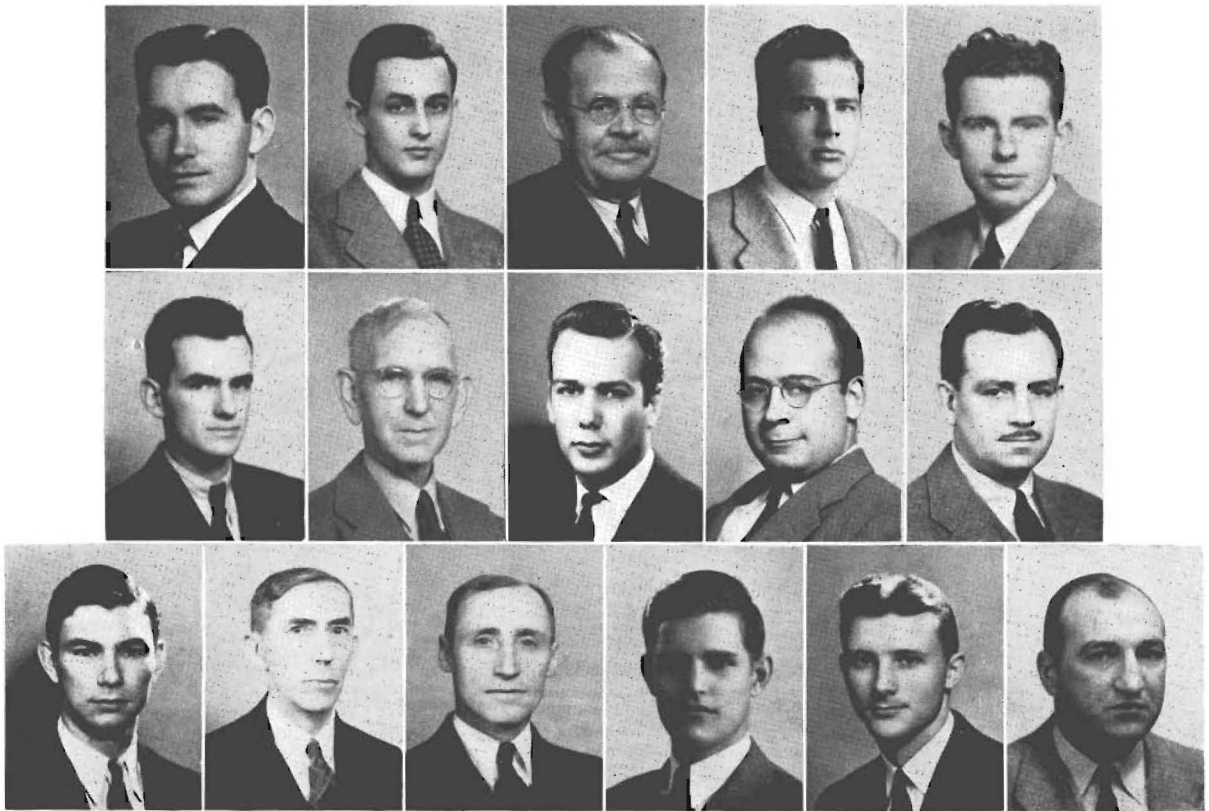
JACK TAYLOR

PROF. OGDEN BAINF



Tau Chapter of Chi Beta Phi, honorary scientific, is composed of those students majoring in science who have passed at least twenty semester hours of science work with a high average. Its purpose is to foster a scientific attitude among college students towards all aspects of life.

OMICRON DELTA KAPPA



OFFICERS

[illegible]

FIRST SEMESTER OFFICERS

EMMETT KELLY	President
BILL WOOTEN	Vice-President
PROF. H. J. BASSETT	Secretary-Treasurer

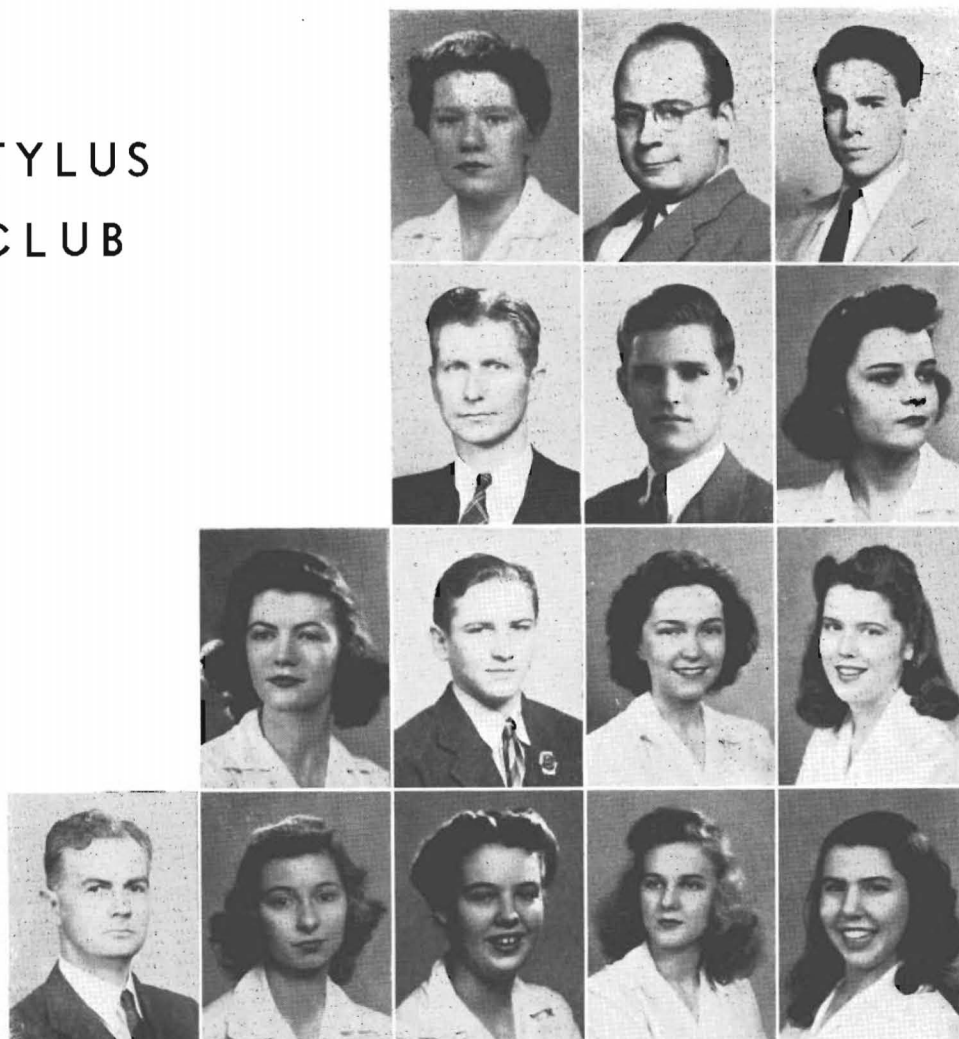
JULIAN NALL
 PROF. ROBERT POND
 ROLAND JONES
 ROBERT GOOSTREE
 PROF. W. ROSS JUNKIN

FLEET EDWARDS

JAMES COLLIER
 PROF. R. W. HARTLEY
 PROF. FELIX B. GEAR
 GEORGE CASE
 RAY ALLEN

O. D. K. is a national honorary fraternity organized for the purpose of giving recognition to the best all-round men of the Junior and Senior classes. O. D. K. aims to select those men pre-eminent in leadership in student activities and in upholding the ideals of the college. Membership is limited to three per cent of the men students.

STYLUS CLUB



ANNE HOWARD BAILEY	President
ROBERT GOOSTREE	Secretary-Treasurer

JOHN NORTHCROSS	MARIANNE McCALLA	BERNIECE WIGGINS
DR. J. Q. WOLF	MILTON ADDINGTON	DOTTIE SOUTH
GEORGE CASE	MARY LOUISE HARTZELL	MIGNON PRESLEY
JANET KELSO	LEE CONLEY	SARAH WHITE BARTH
	PROF. WILBUR STOUT	

NOT PICTURED

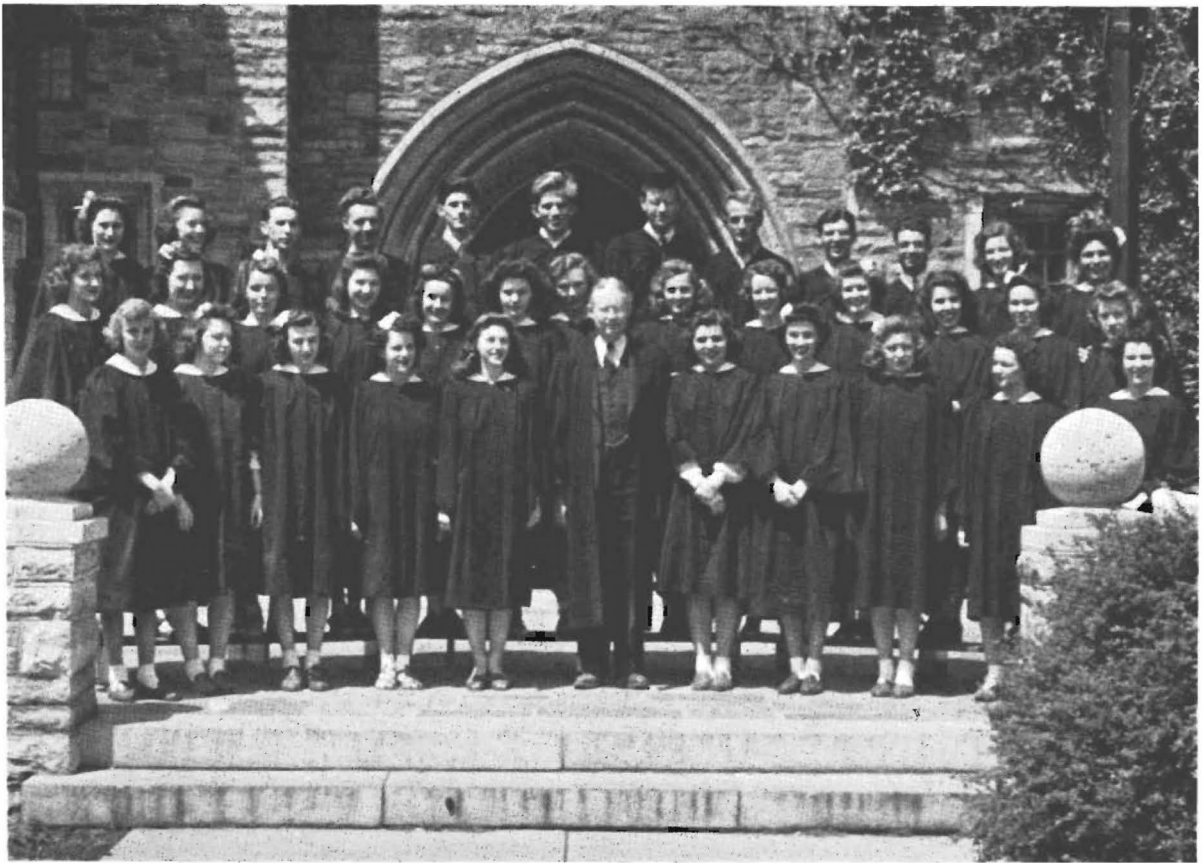
BILL RAMSAY	PERRIN LOWERY
RALPH SCHWAB	RALPH OSBOURNE

The purpose of Stylus Club is to recognize and encourage literary ability. The present club was formed by a merger of the men's and women's literary organizations, Sigma Upsilon and the Bluestockings. New members are chosen through invitation to submit papers in competition, the best of which are chosen for membership. The club works in co-operation with the Journal, the campus literary publication, and offers rewards for the best manuscripts submitted.

A black and white photograph of a marching band performing on a grassy field. The band members are in uniform, and their long shadows are cast across the grass. A conductor in a light-colored suit stands on the right, facing the band. The background features trees and a clear sky.

WILLIAM BOWDEN	E. W. NELIUS	DOUGLAS HAYS
ALEX BRANSFORD	WILLIAM RAMSAY	JACK CARLISLE
JOHN CANON	EDWARD RHOADES	EDWIN HERRING
WALTON COLE	GORDON ROWE	ROBERT DOUGLAS
DIXON CONNELL	ROBERT STANWORTH	CHAM CANON
CHARLES COX	SAM STEPHENSON	ALEXANDER CUNNINGHAM
REZNEAT DARNELL	ROBERT TYSON	WILLIAM SYMES
JOHN DONNELLY	VAN PHILPOT	HERBERT HODGES
WILLIAM FEW	HUGH DAVIDSON	HUNTER PHILLIPS
MEREDITH FLAUTT	JOHN DOUGLAS	TOM DURHAM
WHARTON JONES		GEORGE MARSHALL

THE SOUTHWESTERN SINGERS



WILLIAM RAMSAY	President
WILLIAM SYMES	Vice-President
GENE DICKSON	Secretary

MARY LOU ALMEDA
 SARAH WHITE BARTH
 LOUISE CLARKE
 MARY LEE CONLEY
 MILDRED DAVIS
 HAZELITA FARRIOR
 DOROTHY FLANIKEN
 VIRGINIA GIBBINS
 ELIZABETH GODDARD
 ROSELLA HILL
 MARY HUNTER
 MARTHA HUNTER
 VADIS JETER
 SUSAN JETT
 PEGGY KELLY
 JANET KELSO
 NANCY KIZER
 MARY McADAMS
 MARIANNE McCALLA
 NANCY McMAHAN

ANNE MIDDLETON
 SUE POTTS
 MIGNON PRESLEY
 NELL JANE SANDERS
 MARY HARRIET SILLIMAN
 JANE SKINNER
 BETTY JOY SMITH
 JANE SODERSTROM
 CAROLYN TATE
 IRENE TRIFIATIS
 BETTY WEBB
 IMOGENE WILLIAMSON
 JANICE WILLIAMS
 BETTY JEAN WILKINSON
 VIRGINIA WADE
 PEGGY WALTHAL
 DICK BOLLING
 ALEX BRANSFORD
 WALTON COLE

HUGH DAVIDSON
 REZNEAT DARNELL
 JOHN DONNELLY
 TOM DURHAM
 ERNEST FLANIKEN
 ED HERRING
 HERBERT HODGES
 J. G. HUGHES, JR.
 GEORGE MARSHALL
 GEORGE MORROW
 E. W. NELIUS
 EDWARD RHOADES
 LINDA BEAMAN
 GORDON ROWE
 DONALD McGUIRE
 JAMES EDWARDS
 HENRIETTA RUHMANN
 GEORGANNE HOWARD
 VIRGIL BRYANT
 JEAN CHISHOLM

The Southwestern Singers is the primary musical organization on the Campus. It performs at Vesper Services and appears at various schools and churches in this vicinity.

ALPHA THETA PHI



FIRST SEMESTER

GLADYS MOORE ELLIS President
 ED ADAMS Vice-President
 BILL WOOTEN Secretary-Treasurer

SECOND SEMESTER

DOTTIE GILL
 LOUISE HOWRY

EMMETT KELLY

REAMA DeVALL

MARY LOUISE HARTZELL

MARION McKEE

DR. H. J. BASSETT

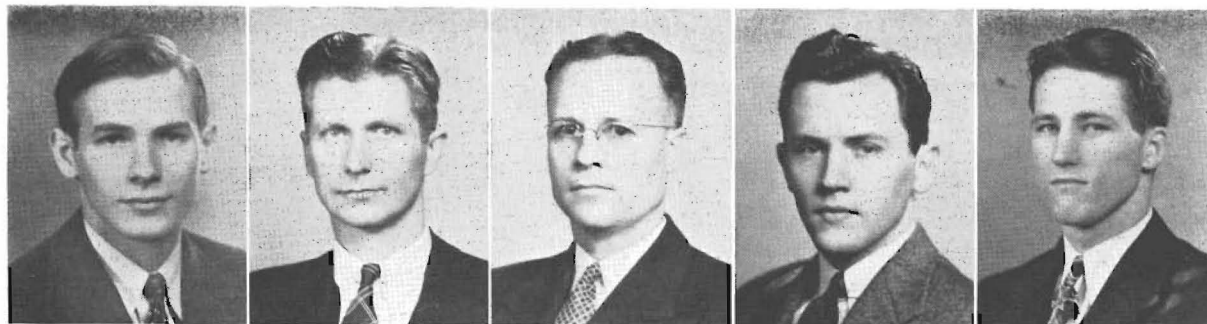
EDITH WRIGHT

NOT PICTURED

BILL RAMSAY

Alpha Theta Phi is a scholastic fraternity of both men and women, composed only of those students that have completed at least two and one-half years of college work, maintaining an exceptionally high scholastic average. Its object is to recognize such students and to emphasize scholarship in the thoughts of other students. It is petitioning Phi Beta Kappa.

THE PUBLICATIONS BOARD



LEWIS WELLFORD	President
PROF. J. Q. WOLF	Secretary
MR. C. L. SPRINGFIELD	Treasurer
PROF. OGDEN BAINE (not pictured)	Faculty
VANCE GILMER	Senior
KENNY HOLLAND	Junior
HARLAND SMITH (not pictured)	Sophomore



The purpose of the Publications Board is to exercise supervision and control over all student publications. All such publications are authorized by the board, which also selects the editors and makes all financial appropriations to them.

The board is composed of a president, elected by the student body, an elected member from each of the three upper classes, a faculty member appointed by the president of the college, and a permanent treasurer, the bursar of the college.

TORCH SOCIETY

MILTON MATHEWES President
 LOUISE HOWRY Vice-President
 KATHARINE MILLER . . . Secretary-Treasurer



TOMMIE JEAN HAYGOOD
 JESSAMINE GRIMES
 GLADYS MOORE ELLIS

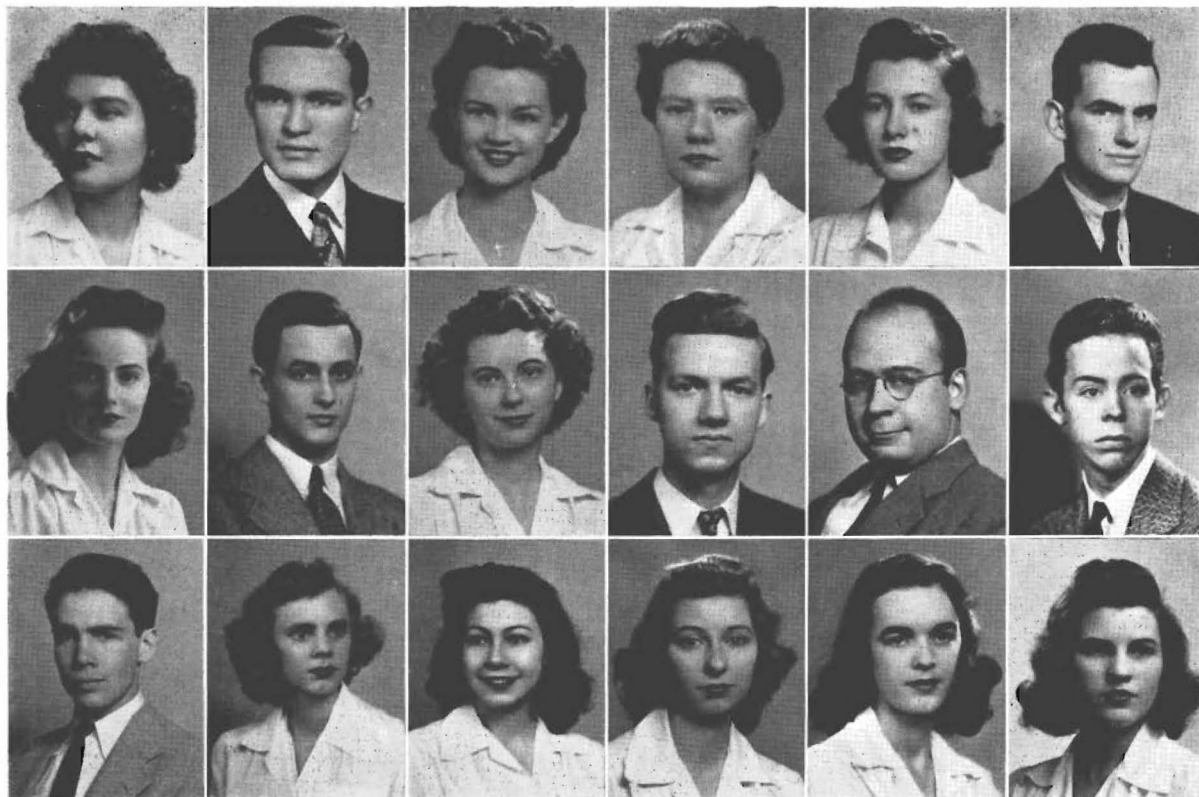


GEORGANNE LITTLE BEAUMONT
 MARY HUNTER
 MARIANNE McCALLA



Torch Society, the senior women's honorary organization, was organized at Southwestern in 1937. Its purpose is to recognize women students who have obtained a high standard of scholarship or leadership in campus activities. Invitation to membership in this group of representative campus women is extended on the basis of character, scholarship, and activity points.

THE PLAYERS



LAURA LAKE President
 JAMES McNEES President (First Semester)
 JESSAMINE GRIMES Secretary-Treasurer

ANNE HOWARD BAILEY
 ELIZABETH HINCKLEY
 JULIAN NALL
 PATTY RADFORD
 JOHN WHITSITT
 JANE PEETE
 JAMES EDWARDS

DAVID RUFFIN
 JOHN NORTHROSS
 SUE POTTS
 LOUISA McLEAN
 BERNIECE WIGGINS
 DEMETRA PATTON
 BEVERLY McFALL

ROBERT GOOSTREE

NOT PICTURED

LORAIN DOWNING
 BILL BOWDEN

EDWIN HERRING

The Southwestern Players is a campus organization for promoting appreciation of drama and learning the skills of the theater. Membership is taken from heeler, or apprentices, who have contributed the equivalent of a year's work in dramatics.

April Fool Carnival

King Allen Hilzheim
Queen Milton Mathewes

The Stupid Council
of Southwestern

pre-sents
The One and Only (thank goodness)

APRIL FOUL
CORNIFUL

for the benefit
(all contributions accepted)
and/or
pleasure ???
of their majesties

Kingallenhilzheim
Queenmiltonmathewes
and the members of their juvenile court
a play entitled

BIG DIEHL-ERS By The ZOO
or
WE TRIED TO BE CLEVER
AND COULDN'T

mutilated by Wiggins and Bailey
lumigated by Nall and Hilzheim

APRIL 3, 1943
IN THE SOUTHWESTERN BARN.



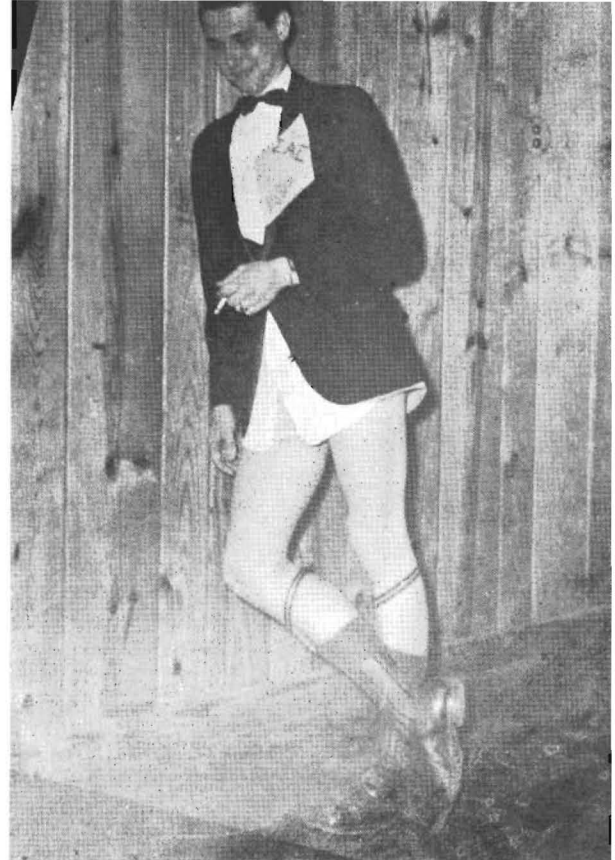


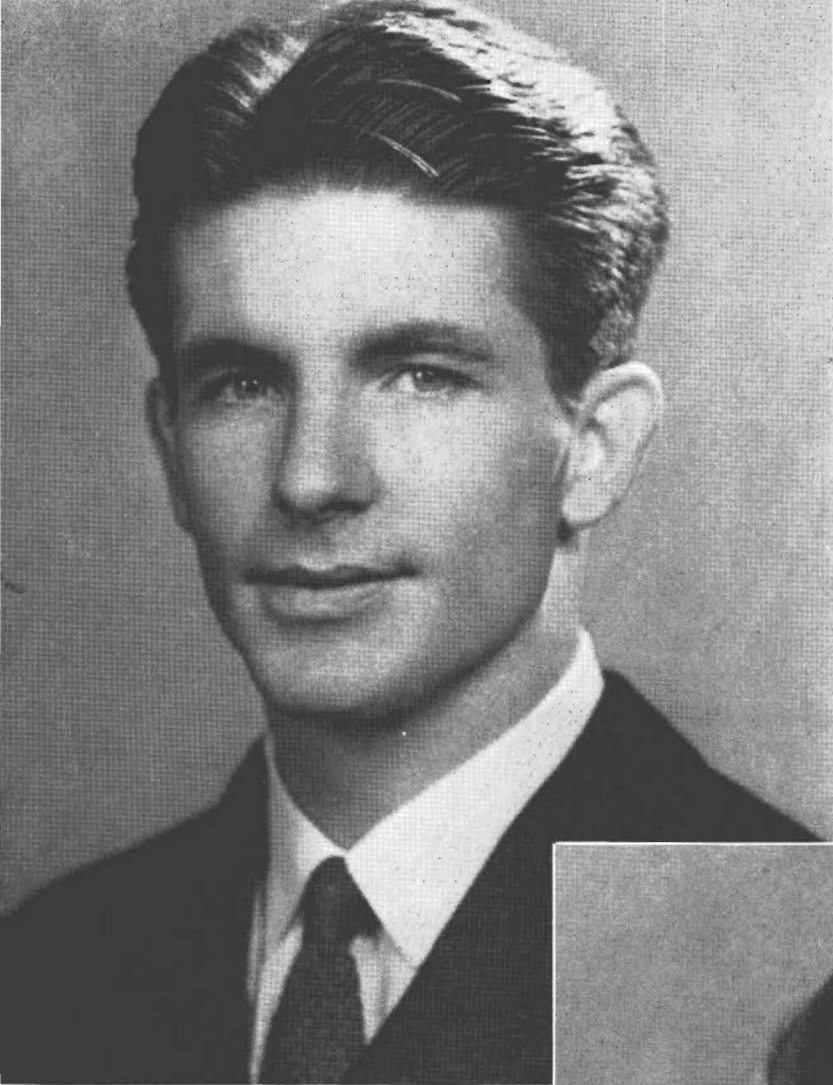
Fairyland Ball

Once a year cares are thrown to the winds, and a much waited-for event occurs. The April Fool Carnival, Southwestern's Little Mardi Gras, comes into full, joyous swing. Amid a riot of color and laughter, insanity mounts a throne and the countryside stuffs its ears. For it is then that we "cut the fool" in an evening dedicated to Fun. A humorous drama, a masquerade, and general frivolity constitute the highlights of the evening.

This year, Allen Hiltzheim and Milton Mathewes ruled for the single night's festivities as King and Queen, while Julian Nall and Louise Howry acted as Lord and Lady-in-Waiting. Peggy Hughes, Patty Radford, Shirley Seagle, Shirley Scott, Marion McKee, Fred Kelley, Lewis Wellford, Frank Kennedy, Roland Jones, and William Allen lent their help as the April Fool Carnival Court.



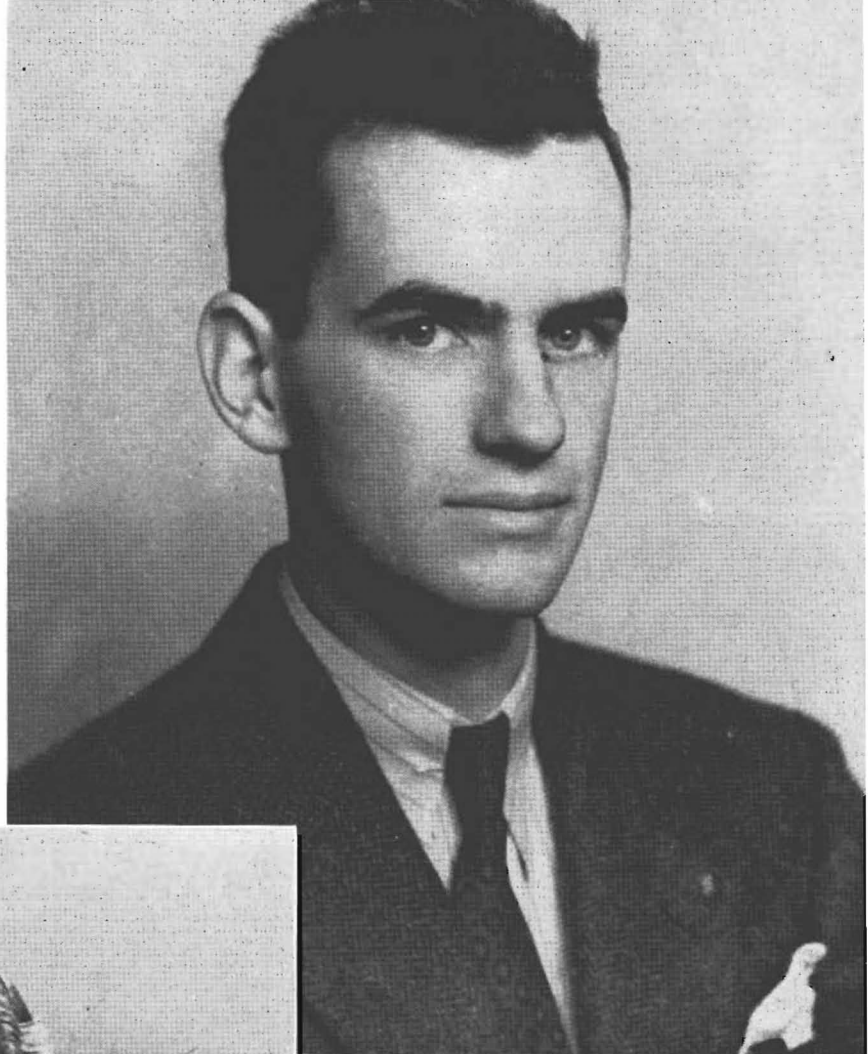




HALL OF FAME



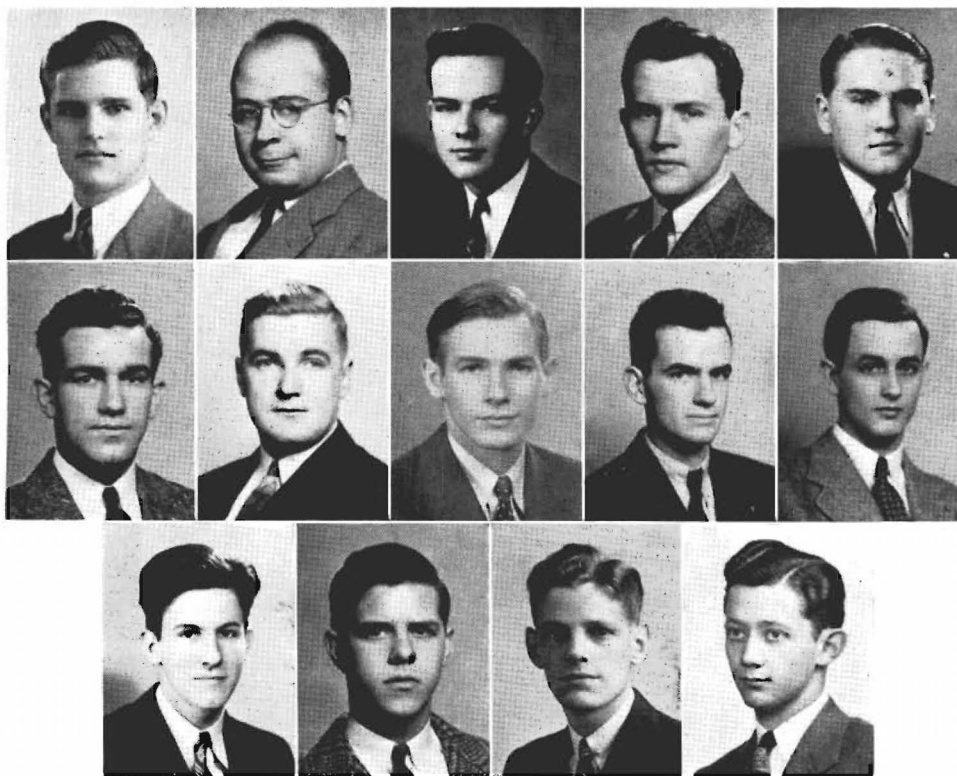
Highest among the honors that can go to a senior at Southwestern is to be chosen as a member of the "Hall of Fame." Candidates are nominated by the Student Council, and the final selection is made by the presidents of the Sophomore, Junior, and Senior classes and the President and Dean of the college. Indispensable qualifications are leadership, service, scholarship, and character. The honors, this year, fall to Robert Beasley, Milton Mathewes, Roland Jones, and Julian Nall.



Fraternities



THE MEN'S PANHELLENIC COUNCIL



GEORGE BATTLE CASE President

ALPHA TAU OMEGA

ROBERT GOOSTREE Vice-President

SIGMA ALPHA EPSILON

ALFRED CANON Secretary-Treasurer

KAPPA ALPHA

VANCE GILMER, Alpha Tau Omega

WILLIAM TURNER, Alpha Tau Omega

WILLIAM SPEROS, Sigma Nu

JACK MILLS, Sigma Alpha Epsilon

LEWIS WELLFORD, Sigma Alpha Epsilon

JULIAN NALL, Sigma Alpha Epsilon (First Semester)

JOHN WHITSITT, Sigma Alpha Epsilon (First Semester)

WARNER HODGES, Pi Kappa Alpha

MORISON BUCK, Pi Kappa Alpha

ALLEN HILZHEIM, Kappa Sigma

FRANK KENNEDY, Kappa Sigma

NOT PICTURED

HUGH MURRAY, Kappa Alpha

EDWARD QUINN, Pi Kappa Alpha (First Semester)

The Men's Panhellenic Council is composed of representatives from the six fraternities on the campus. Its purpose is to exercise a measure of control over fraternity activities. The Council sponsors a series of Mid-Winter Dances between semesters.



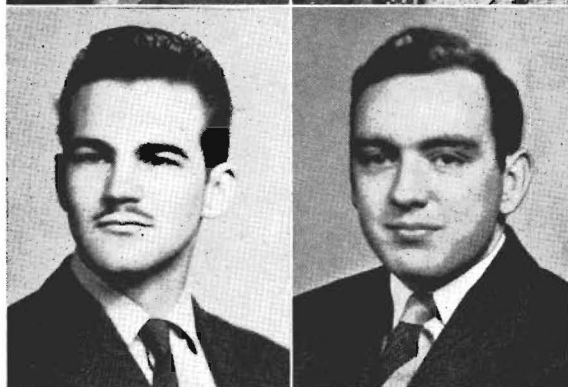
Gilmer

Case



McFadden

Donnelly



Adams

Connell



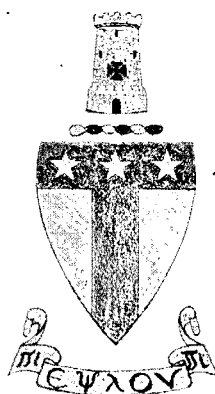
Addington

McFadden

TENNESSEE TAU OMEGA CHAPTER—ESTABLISHED 1882

ALPHA TAU OMEGA

Founded at Virginia Military Institute, 1865



GEORGE BATTLE CASE	Worthy Master
EDGAR McFADDEN	Worthy Chaplain
JOHN DONNELLY	Worthy Scribe

CLASS OF 1943

EDWARD ADAMS	JOHN DONNELLY	VANCE GILMER
GEORGE BATTLE CASE	V. A. FURR	EDGAR McFADDEN

CLASS OF 1944

DIXON CONNELL
WILLIAM TURNER

CLASS OF 1945

MILTON ADDINGTON	WILLIAM HAYNES	TOM WILLIAMS
------------------	----------------	--------------

CLASS OF 1946

JAMES McFADDEN



Edwards
Hilzheim
McNees
Romine
Beasley
Fowler



Davis
Kelly
Ligon
Malone
Slusser
Kennedy



Stephenson
Dowdle
Earhart
Goodwyn
Jones
Smith



Spain
Herring
West
Amis
Bullock
Hilzheim



McLeod
Hodges
Kelley
Miller
Michaux
Boyd



Clarke
Cox
Crawford
Durham
Houser
Hays

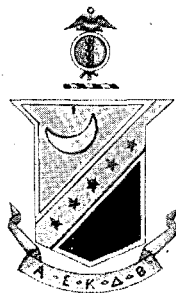


Gideon
Bensabat
Bolling
Bryant

PHI CHAPTER — ESTABLISHED 1882

KAPPA SIGMA

Founded at University of Virginia, 1869



OFFICERS

First Semester	Grand Master	Second Semester
ALLEN HILZHEIM	Grand Procurator	ALLEN HILZHEIM
J. C. McNEES	Grand Master of Ceremonies	FRANK KENNEDY
CLAUDE ROMINE	Grand Scribe	SAM STEPHENSON
SAM STEPHENSON	Grand Treasurer	JACK DENNIS
FRANK KENNEDY		EDWIN HERRING

CLASS OF 1943

ROBERT BEASLEY	MORGAN FOWLER	J. C. McNEES
TANNER DAVIS	ALLEN HILZHEIM	CLYDE MALONE
FLEET EDWARDS	EMMETT KELLY	CLAUDE ROMINE
	CHEVES LIGON	

CLASS OF 1944

H. C. EARHART	STEVE GOODWYN	SAM STEPHENSON
	FRANK KENNEDY	

CLASS OF 1945

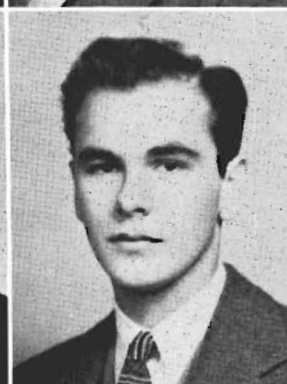
ROBERT AMIS	EVERADE JONES	JOHN SPAIN
JACK DENNIS	LOUIS LEROY	ROBERT STANWORTH
TOMMY HOUSER		ALLEN WEST

CLASS OF 1946

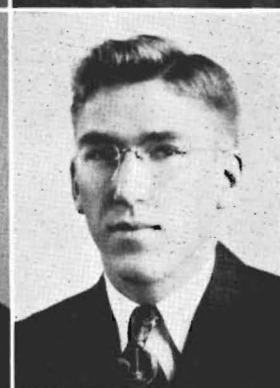
ALBERT BENSABAT	WILLIAM FEW	CLYDE McLEOD
RICHARD BOLLING	JOHN GIDEON	LARCHE MICHAUX
JAMES BOYD	DOUGLAS HAYS	GEORGE MILLER
VIRGIL BRYANT	EDWIN HERRING	ROBERT MILLER
BILL BULLOCK	HERBERT HIGHFILL	JOHN MITCHELL
HUGH CLARKE	JACK HILZHEIM	IRA MOORE
CHARLES COX	HERBERT HODGES	LESLIE SHEEHY
HUGH CRAWFORD	FRED KELLEY	CLYDE SMITH
W. G. CURRIE	EVANS LOVITT	JOE THOMAS
WALTER DUBARD	GORDON McINTYRE	WINFORD VEALE
TOM DURHAM		WILLIAM WEST



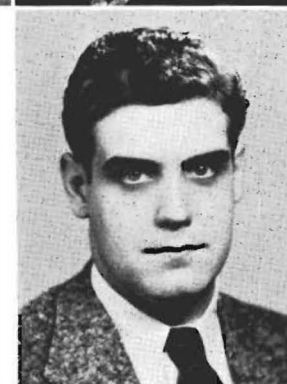
Bearden
Goostree
Andrews



Ising
Baker
McClure



Speros
Holland
Hicks



Stevenson

EPSILON SIGMA CHAPTER—ESTABLISHED 1934

SIGMA NU

Founded at Virginia Military Institute, 1869



OFFICERS

WILLIAM SPEROS	Eminent Commander
KENNETH HOLLAND	Lieutenant Commander
JAMES T. ANDREWS	Treasurer
ROBERT GOOSTREE	Recorder
JOHN McADAMS	Chaplain
ALEX BRANSFORD	Reporter
WILLIAM McCLURE	Sentinel

CLASS OF 1943

JAMES T. ANDREWS	RAY BEARDEN
ROBERT GOOSTREE	

CLASS OF 1944

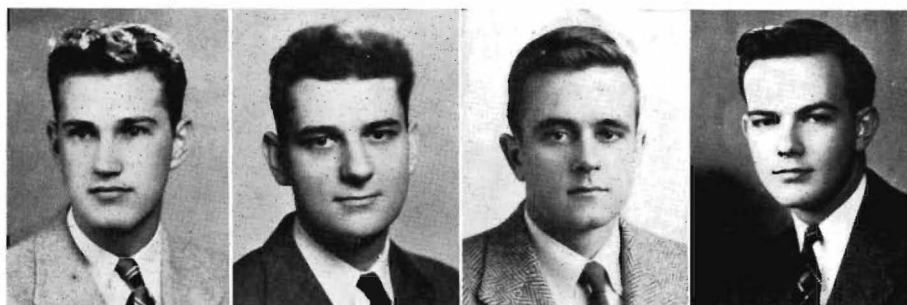
DAVID BAKER	JAMES ISING
SPENCER BEASLEY	WILLIAM SPEROS
KENNETH HOLLAND	JACK WYATT

CLASS OF 1945

ALEX BRANSFORD	JOHN McADAMS
NOBLE HICKS	ERNEST MEEK
NEVILLE STEVENSON	

CLASS OF 1946

WILLIAM McCLURE



Gordon
Albertine
Hinson
Canon



Allen
Gordon
Philpot
Baldridge



Pridgen
Matthews
Hedden
Wade



Tidwell
Bailey
Lawrence
McClain



Mims
Orpet

ALPHA EPSILON CHAPTER — ESTABLISHED 1887

KAPPA ALPHA

Founded at Washington and Lee, 1865



OFFICERS

ALFRED CANON	I
LLOYD GORDON	II
ALEC ALBERTINE	III
HUGH MURRAY	IV
HENRY HEDDEN	V
MALCOLM HINSON	VI
DONALD GORDON	VII
MEREDITH FLAUTT	VIII
DAVID MATTHEWS	IX

CLASS OF 1943

ALEC ALBERTINE	LLOYD GORDON	MALCOLM HINSON
----------------	--------------	----------------

CLASS OF 1944

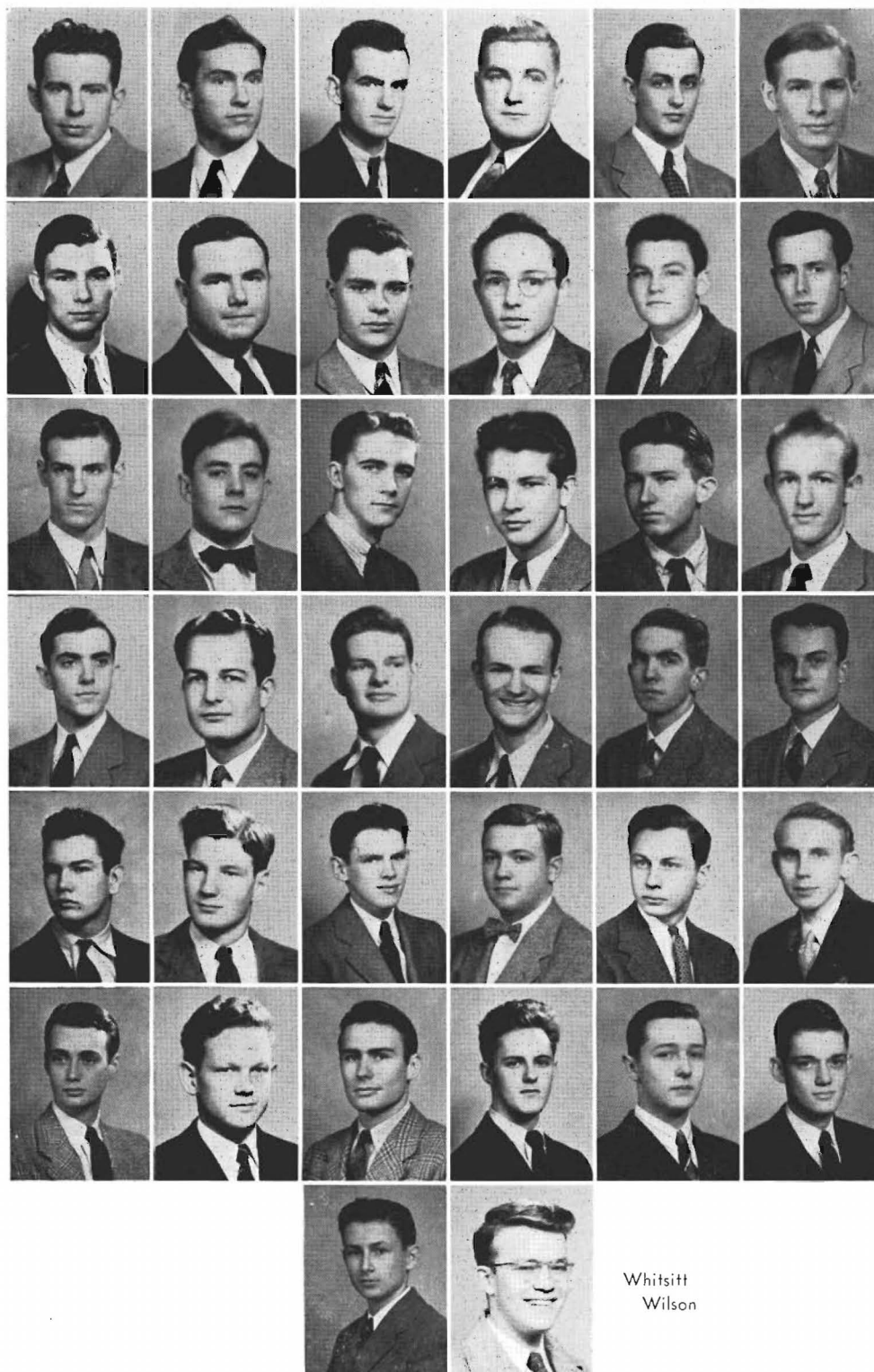
RAY ALLEN	ALFRED CANON	VAN PHILPOT
-----------	--------------	-------------

CLASS OF 1945

DAVID BALDRIDGE	HENRY HEDDEN	STEVE PRIDGEN
MEREDITH FLAUTT	WILLIAM LIVESAY	HARLAND SMITH
THOMAS FRAZIER	DAVID MATTHEWS	WILLIAM SYMES
DONALD GORDON	HUGH MURRAY	THOMAS TIDWELL

CLASS OF 1946

DEAN BAILEY	FRANK McCLAIN	EUGENE SEARSON
WARD BREIDENTHAL	GEORGE MARSHALL	PAUL SNODGRESS
TYLER HEGENWALD	CHARLES MIMS	JAMES WADE
JACKSON LAWRENCE	PHIL ORPET	AUVERGNE WILLIAMS



Wooten
Baggett
Nall
Mills
Whitsitt
Wellford

Collier
Wills
Morrow
Canon
Dwyer
Denney

Owen
Frye
Hodgson
Hood
Irby
Jones

Mann
Nicholson
Spurrier
Tyson
Barret
Boyle

Collier
Cunningham
Davidson
Dewey
Douglas
Flack

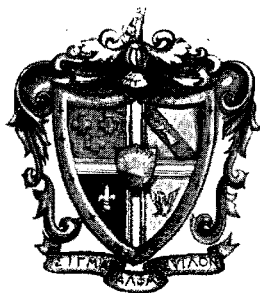
Grant
Miller
Orr
Phillips
Runyan
Trezevant

Whitsitt
Wilson

TENNESSEE ZETA CHAPTER — ESTABLISHED 1882

SIGMA ALPHA EPSILON

Founded at University of Alabama, 1856



OFFICERS

First Semester		Second Semester
JULIAN NALL	Eminent Archon	JACK MILLS
JACK MILLS	Eminent Deputy Archon	LEWIS WELLFORD
LESTER BAGGETT	Eminent Recorder	SAM JOSEPH DENNEY
JOHN WHITSITT	Eminent Treasurer	HAYS OWEN
GEORGE MORROW	Eminent Correspondent	HENRY SPURRIER

CLASS OF 1943

LESTER BAGGETT	JULIAN NALL	WILLIAM WILLS
JAMES COLLIER	LEWIS WELLFORD	WILLIAM WOOTEN
JOHN MILLS	JOHN WHITSITT	

CLASS OF 1944

WILLIAM BANKS	WILLIAM DOYLE	KARL FRANK
CHAM CANON	JAMES DWYER	GEORGE MORROW

CLASS OF 1945

SAM JOSEPH DENNEY	WHARTON JONES	HAYS OWEN
BERSON FRYE	BILLY LEACH	HENRY SPURRIER
WARREN HOOD	ROBERT MANN	ROBERT TYSON
HOMER HOWIE	TOM NICHOLSON	FRANK WHITE
RUFUS IRBY		JAMES WILGUS

CLASS OF 1946

PAUL BARRET	WILLIAM DANIELS	ANDREW MILLER
WILLIAM BLACK	WILLIAM DAVIDSON	ROBERT ORR
SNOWDEN BOYLE	EDWIN DEWEY	HUNTER PHILLIPS
WILLIAM BRYCE	JOHN DOUGLAS	BRYCE RUNYON
JOHN CANON	WILLIAM FLACK	JOHN STOUT
JOHN COLLIER	NEELY GRANT	STANLEY TREZEVANT
CARROLL COOPER	HUBERT HODGSON	HOWARD WHITSITT
ALEXANDER CUNNINGHAM		JAMES WILSON

PI KAPPA ALPHA

Founded at the University of Virginia, 1868

Established 1878



OFFICERS

WARNER HODGES, JR.	President
WILLIAM KENDALL	Vice-President
MORISON BUCK	Treasurer
HOWARD HURT	Secretary

CLASS OF 1943

WARNER HODGES, JR.

CLASS OF 1944

JAMES LINCOLN

CURTIS NELSON

EDWARD QUINN

CLASS OF 1945

MORISON BUCK

DAVE JOLLY

HOWARD HURT

E. W. NELIUS

JACK SIMONTON

CLASS OF 1946

JACK CARLISLE

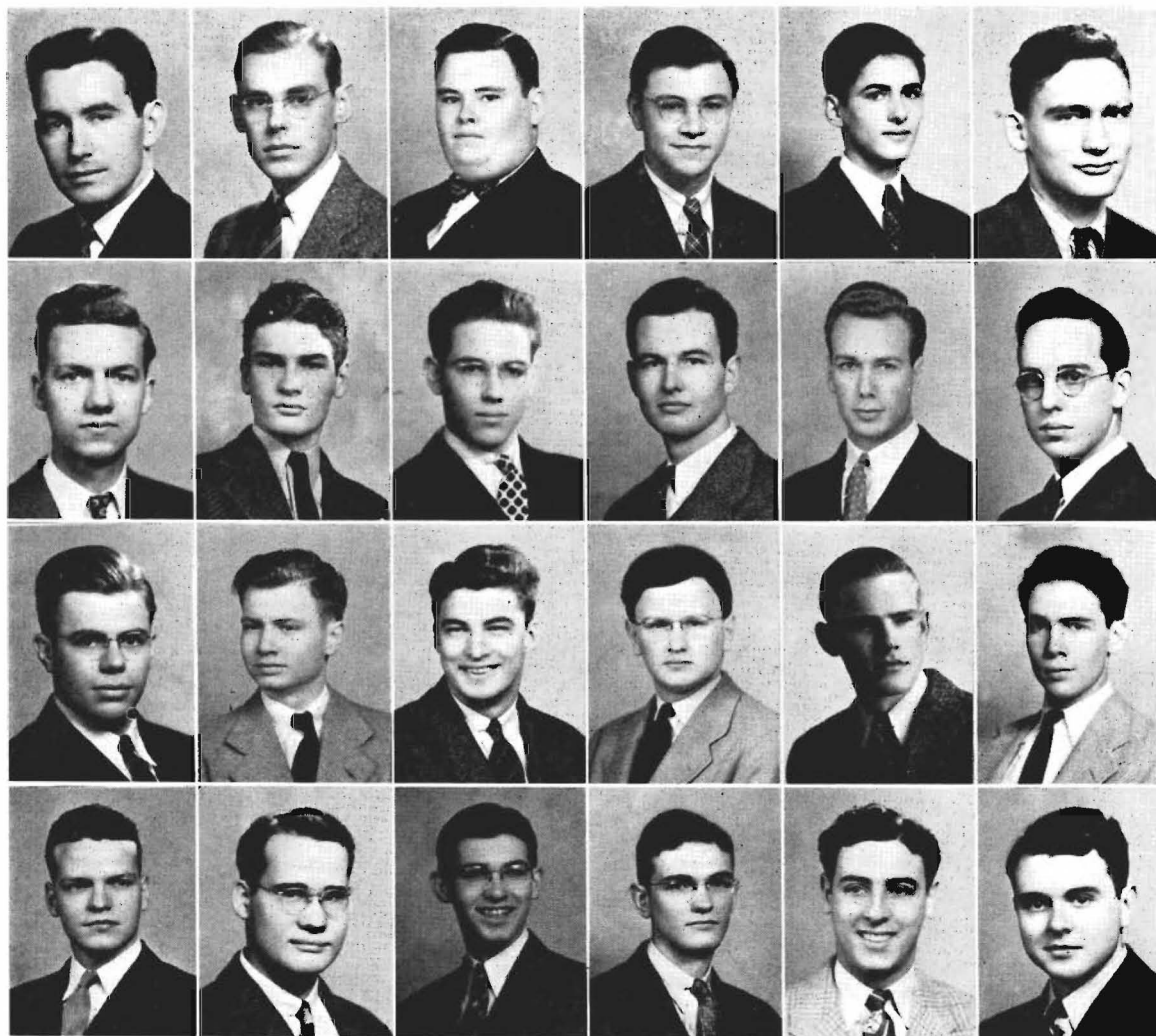
JOHN HODGES

JOHN HARRIS

WILLIAM KENDALL

EUGENE LAWSON

INDEPENDENT MEN



JOSEPH McGEHEE

President

WILLIAM ALLEN

THEODORE ELIOT

PAUL MOORHEAD

WALTON COLE

CHARLES EVANS

JOHN NORTHCROSS (stray Greek)

HERVEY CONWAY

ROLAND JONES (stray Greek)

BILL RANSOM

REZNEAT DARNELL

HENRY LANIUS

EDWARD RHOADES

HUGH DAVIDSON

JOSEPH McGEHEE

GORDON ROWE

LEON DAVIS

BOYD MAIZE

ARCHIE TURNER (stray Greek)

JAMES EDWARDS

MILLARD MILLER

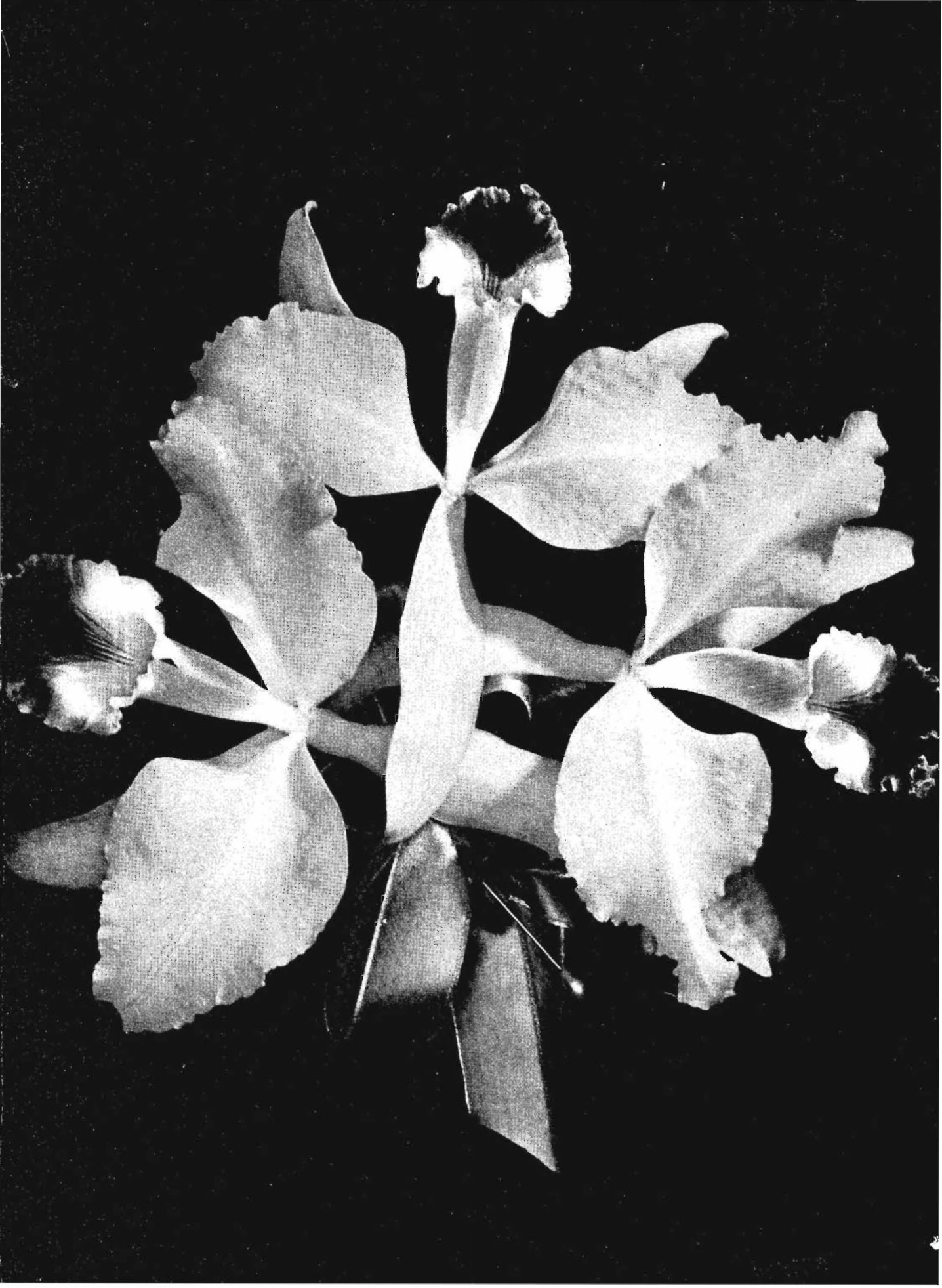
MELVIN WEINBERG

BILL ELBRECHT

JAMES MITCHENER

KENDALL WILLIAMS

The Beauties





Shirley Scott



Joy Gallimore



Patty Radford



Peggy Hughes



Janet Kelso

Sororities



THE WOMEN'S PANHELLENIC COUNCIL



LOUISE HOWRY President
DELTA DELTA DELTA

MILTON MATHEWES Vice-President
CHI OMEGA

MARY ANN GARMON Secretary
KAPPA DELTA

KATHARINE MILLER Treasurer
ALPHA OMICRON PI

MARY VIRGINIA SMITH, Zeta Tau Alpha	PEGGY KELLY, Kappa Delta
MABEL FRANCIS, Delta Delta Delta	JANET KELSO, Alpha Omicron Pi
PEGGY HUGHES, Chi Omega	JOY GALLIMORE, Zeta Tau Alpha

The Women's Panhellenic Council consists of two representatives from each sorority. It supervises sorority rushing and meets once a month to discuss problems of the women's social organizations on the campus. Once each fall the Council gives a Women's Panhellenic Dance.



Middleton
McAdams
Garmon
Williams

Prichard
Kelly
Hartzell
Moran

Williamson
Howell
Hartley
Conley

Bailey
Gardener
Hinson
Watson

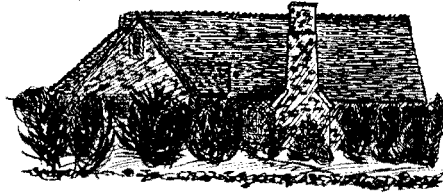
Wyse
Wiggins
Trenor
Sparr

Morrow
Hartzell
Belk
Hall

ALPHA DELTA CHAPTER — ESTABLISHED 1925

KAPPA DELTA

Founded at Virginia State Normal, 1897



OFFICERS

MARY ANN GARMON	President
PEGGY KELLY	Vice-President
MARY LOUISE HARTZELL	Secretary
CLARE WILLIAMS	Treasurer
ANN HOWARD BAILEY	Editor

CLASS OF 1943

MARY ANN GARMON	MARY McADAMS
ANNE MIDDLETON	

CLASS OF 1944

MARY LOUISE HARTZELL	LA NOUE PRICHARD
PEGGY KELLY	CLARE WILLIAMS

CLASS OF 1945

ANN HOWARD BAILEY	MARY JANE HOWELL
LEE CONLEY	LOUISE MORAN
BETTY HARTLEY	IMOGENE WILLIAMSON

CLASS OF 1946

BETTY BELK	JUNE MORROW
MARJORIE GARDENER	PEGGY PARSONS
ANNABELL HALL	SARA SPARR
MADelyn HARPER	ROBERTA TREANOR
JEAN HARTZELL	BERNIECE WIGGINS
ESTELLE HINSON	MARY ANN WYSE



Mathewes
Woods
McLean
McKee
Hughes

Garrott
Grimes
McCall
McFall
Peete

Williams
Battaile
Bostick
Fauntleroy
Potts

Radford
Tate
Banning
Carey
Dailey

Gunther
Howard
Prewitt
Robertson
Ayles

Ballou
Cortright
Crawford
Hollenberg
Howard

Kizer
Latham
Mathewes
Reid
Silliman

Williamson
Wilson

KAPPA BETA CHAPTER — ESTABLISHED 1922

CHI OMEGA

Founded at University of Arkansas, 1895



OFFICERS

MILTON MATHEWES	President
JESSIE WOODS	Vice-President
LOUISA McLEAN	Secretary
MARION McKEE	Treasurer
REGGY HUGHES	Pledge Mistress

CLASS OF 1943

CORNELIA GARROTT	BEVERLY McFALL
JESSAMINE GRIMES	MILTON MATHEWES
LIZETTE McCALL	JANE PEETE
JANICE WILLIAMS	

CLASS OF 1944

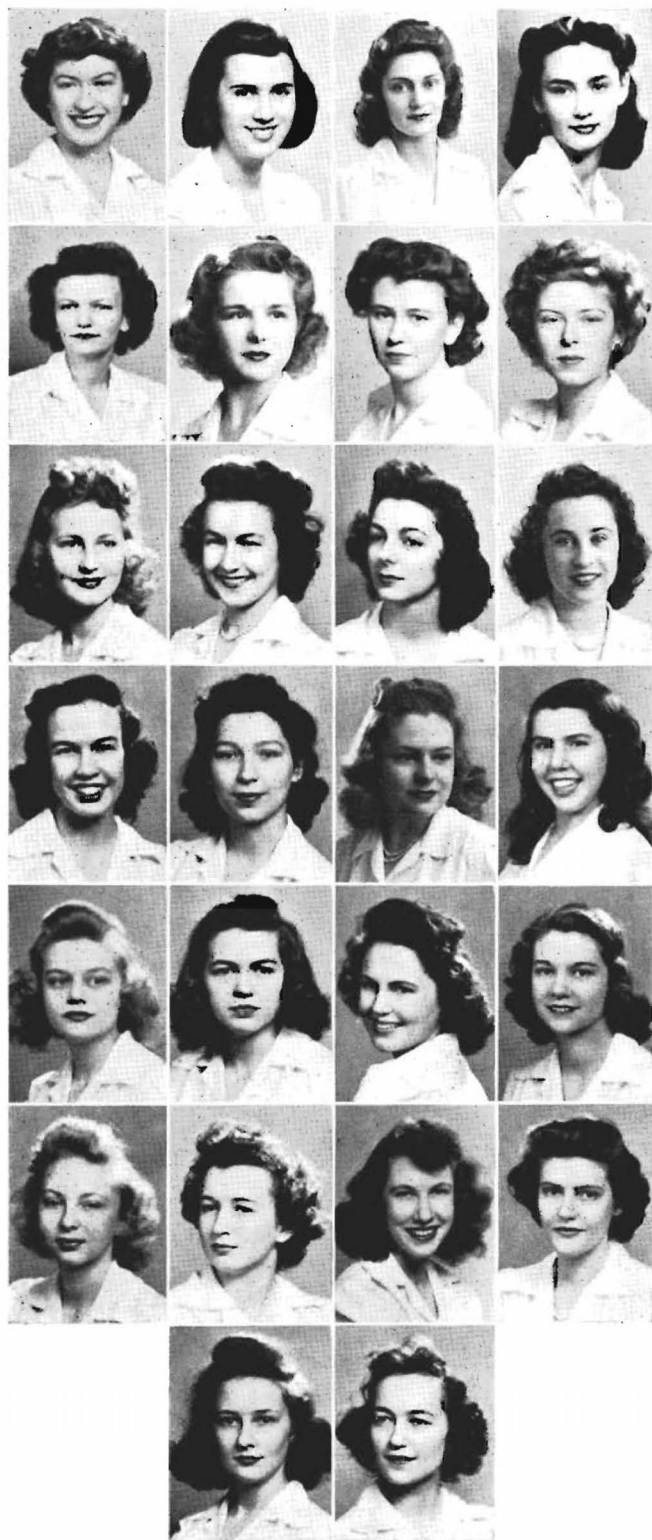
MARGARET BATTAILE	LOUISA McLEAN
FRANCES SCOTT BOSTICK	SUE POTTS
ALLEN FAUNTLEROY	PATTY RADFORD
VIRGINIA HUGHES	CAROLYN TATE
MARION McKEE	JESSIE WOODS

CLASS OF 1945

MARY ANN BANNING	GEORGEANNE HOWARD
JEANNE CAREY	CAROLYN PREWITT
JANE DAILEY	MINOR ROBERTSON
MARGARET GUNTHER	BETTY FRANCIS WILLIAMS

CLASS OF 1946

ARCHER AYRES	NATHALIE LATHAM
VIRGINIA BALLOU	NANCY McMAHAN
MOPSY CORTRIGHT	PATSY MATHEWES
KATHARINE CRAWFORD	MARY NEIL REID
MARION HOLLENBERG	MARY HARRIET SILLIMAN
BETTY HOWARD	FLORA WILLIAMSON
NANCY KIZER	MARY BETH WILSON



Howry
 Brittingham
 Hyde
 Wilkinson

James
 Francis
 DeVal
 Hunter

Dolfinger
 Dickson
 Gooch
 Lynch

Milner
 Woodson
 Almeda
 Barth

Covington
 Crutchfield
 Gulo
 Hord

Hunter
 Lay
 Ransom
 Smith

Stoltzenberg
 Wade

DELTA PSI CHAPTER—ESTABLISHED 1931

DELTA DELTA DELTA

Founded at Boston University, 1888



OFFICERS

LOUISE HOWRY	President
VIRGINIA BRITTINGHAM	Vice-President
ANITA HYDE	Recording Secretary
BETTY JEAN WILKINSON	Corresponding Secretary
ANN JAMES	Treasurer
MABEL FRANCIS	Marshal

CLASS OF 1943

VIRGINIA BRITTINGHAM	LOUISE HOWRY
REAMA DeVALL	MARY HUNTER

CLASS OF 1944

EMMY JEAN DOLFINGER	MABEL FRANCIS
ANNE JOHNSTON	

CLASS OF 1945

GENE DICKSON	MARY FRANCIS LYNCH
ANITA HYDE	JANE MILNER
ANN JAMES	BETTY JEAN WILKINSON
MARIANNA WOODSON	

CLASS OF 1946

MARY LOU ALMEDA	JEANETTE HORD
SARAH WHITE BARTH	MARTHA HUNTER
DOROTHY CHAUNCEY	BETTY LAY
IMOGENE COVINGTON	SUZANNE RANSOM
JUNE CRUTCHFIELD	BETTY JOY SMITH
BETTY GOOCH	DENA STOLTZENBERG
MARTHA JO GULO	VIRGINIA WADE



Smith
Morgan
Jones



Albro
Soderstrom
Siviter



Gallimore
Beaumont
Farrior



Turrentine
Gibbons
Goddard

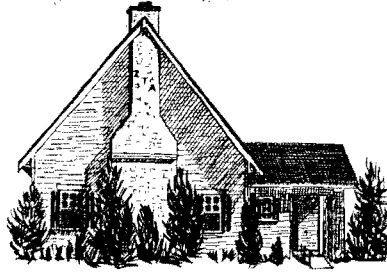


Hall
Johnston
Walsh

BETA SIGMA CHAPTER — ESTABLISHED 1929

ZETA TAU ALPHA

Founded at Virginia State Normal, 1898



OFFICERS

MARY VIRGINIA SMITH	President
EMILY MORGAN	Vice-President
KATHRYN MARTIN JONES	Secretary
BETTY ALBRO	Treasurer
JANE SODERSTROM	Historian
ALICE SIVITER	Guard
JOY GALLIMORE	Conductor

CLASS OF 1943

GEORGANNE LITTLE BEAUMONT KATHRYN MARTIN JONES
MARY VIRGINIA SMITH

CLASS OF 1944

BETTY ALBRO

CLASS OF 1945

HAZELITA FARRIOR	ALICE SIVITER
JOY GALLIMORE	JANE SODERSTROM
EMILY MORGAN	FRANCES ANN TURRENTINE

CLASS OF 1946

JANE ANDERSON	JUNE GUICE
VIRGINIA GIBBONS	DOROTHY HALL
ELIZABETH GODDARD	SARAH JOHNSTON



Miller
Gill
Hinckley
Lake
Kelso



McCalla
New
Clarke
Flanniken
Jett



Ming
Patton
Thompson
Barron
Greenleso



Roach
Seagle
Uhlhorn
Bigger
Bradshaw



Hansen
Jeter
Mitchell
Quinn
Scott

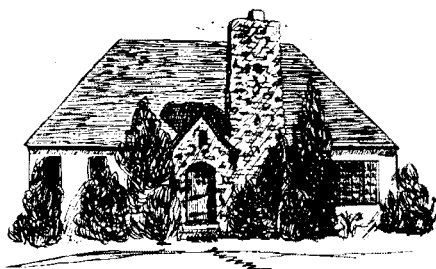


Smith
Treadwell
Wooten

KAPPA OMICRON CHAPTER — ESTABLISHED 1926

ALPHA OMICRON PI

Founded at Barnard College, 1897



OFFICERS

KATHARINE MILLER	President
GLADYS MOORE ELLIS	Vice-President
DOROTHY GILL	Treasurer
ELIZABETH HINCKLEY	Recording Secretary
LAURA LAKE	Corresponding Secretary

CLASS OF 1943

GLADYS MOORE ELLIS	LAURA LOEB
DOROTHY GILL	MARIANNE McALLA
ELIZABETH HINCKLEY	KATHARINE MILLER
LAURA LAKE	MARY NEW
MARGARET POLK	

CLASS OF 1944

PAT CAROTHERS	JANET KELSE
LOUISE CLARKE	AGNES ANN MING
DOROTHY FLANNIKEN	DEMETRA PATTON
SUSAN JETT	LOUISE THOMPSON

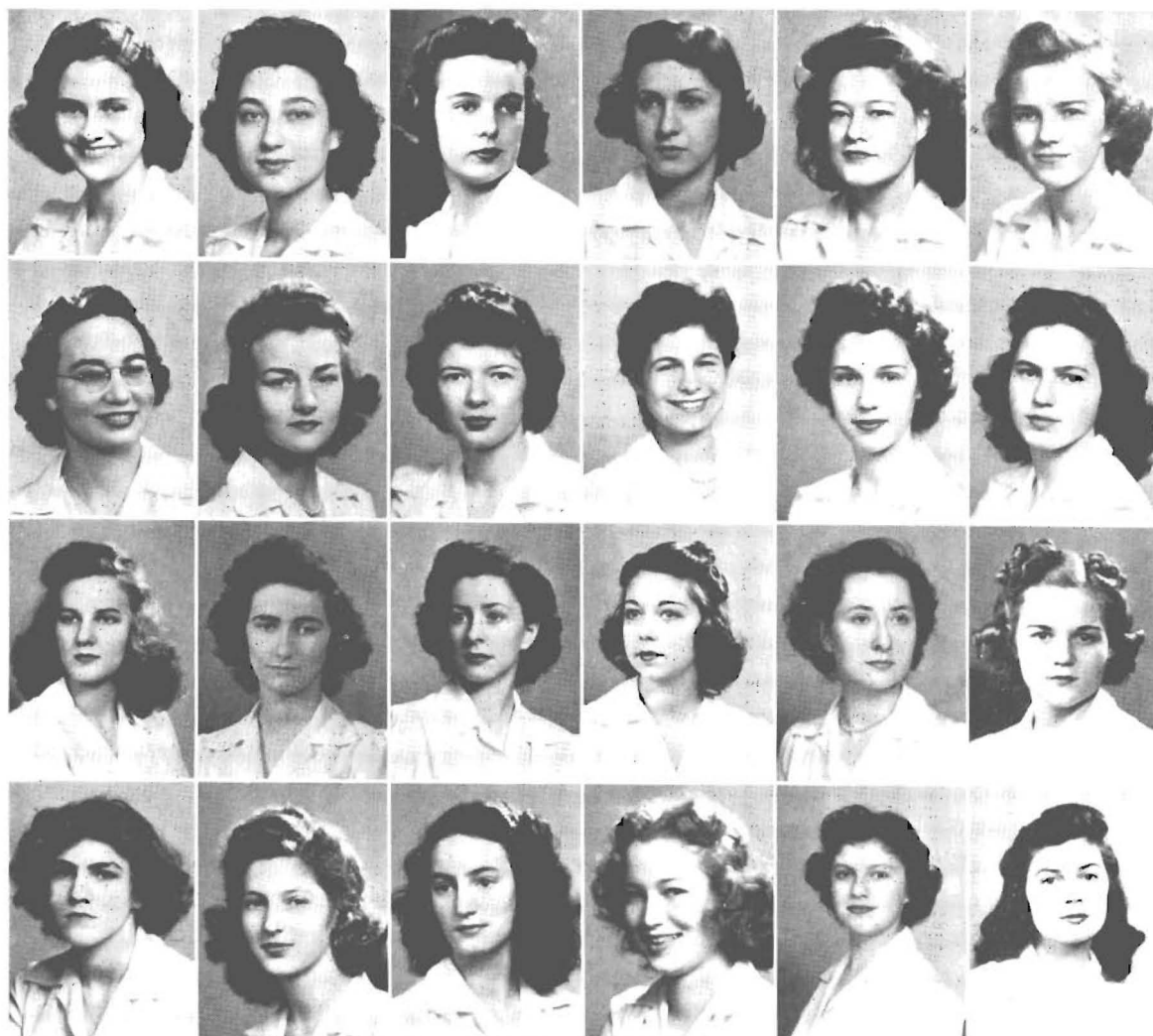
CLASS OF 1945

BEVERLY BARRON	SHIRLEY SEAGLE
HARRIET GREENLESE	FRANCES UHLHORN

CLASS OF 1946

JANE BIGGER	PAT QUINN
ANN BRADSHAW	HALCYON ROACH
MILDRED DAVIS	SHIRLEY SCOTT
MARY BETH HANSEN	KATHARINE SMITH
VADIS JETER	JANE TREADWELL
JANE MITCHELL	FLOY WOOTEN

INDEPENDENT WOMEN



Elizabeth Woodcock
Sadie Wahl
Dorothy South
Hannah Miller
Lorraine McMinn
Tommie Jean Haygood
Dorothy Daniel
Marjorie Moorhead
Rosella Hill
Irene Trifiatis
Ruby Shefsky
Henrietta Ruhmann
Mignon Presley



MARJORIE MOORHEAD President
TOMMIE JEAN HAYGOOD Vice-President
ROSELLA HILL Secretary-Treasurer

Virginia McGaughran
Katherine Henderson
Ruth Bryant
Linda Beaman
Edith Wright
Mary Adams
Dorothy Chauncey
Beth Raines
Dorothy Schrodt
Gloria Shefsky
Jane Waddell
Margaret Lyne
Betty Webb



ADVERTISEMENTS

"A GOOD DAILY HABIT"

Every day you'll find jolly crowds from Southwestern enjoying good things to eat and drink at one of the two Fortune's

**Fortune's Belvedere
Fortune's Jungle Garden**

LESSER COTTON CO.

ST. LOUIS

MEMPHIS

A WORD OF THANKS

In designing this year's "Lynx," an attempt has been made to give a new and modern presentation of life at Southwestern. For the first time, large and "bleed" cuts have been used, and more color has been added. The trend being away from heavy themes, this "Lynx" has been built around the students, their activities, and campus life. But in the course of the year's time, many changes in the original plans have been necessitated by lack of photographic equipment and supplies, and the book as published is a compromise with the original plan. However, it is the sincere hope of the editor that enough of the "spirit of Southwestern" has been caught to provide for the years yet to come many happy hours in reflections of our College days.

I should like to take this opportunity to express my thanks to those whose help has been an indispensable part in the publication of this book. To Mrs. C. K. Radford, who has done all the typing of copy, to Mr. Harry J. Freeburg of S. C. Toof & Co., and Mr. Joe Kieran and Mr. Nick Hanson of the Hanson Engraving Company for their advice on technical and artistic matters, and to Miss Catherine Hayley, our portrait photographer, the Chicago Tribune and the Commercial Appeal which have supplied a large part of the pictures used herein, goes my sincerest appreciation.

JOHN C. WHITSITT, Editor

May 1, 1943

FROM COAST TO COAST THEY'RE WORN THE MOST!

Which clothes always pop up in first place
in the popularity polls?

HART SCHAFFNER & MARX

*Every Time . . .
Sold Exclusively
in Memphis at . . .*

JULIUS LEWIS
145-151 SOUTH MAIN ST.

- **FIRST CHOICE** in a survey made on college campuses all over the United States.
- **FIRST CHOICE** in a survey made by the Scripps-Howard newspapers and Parent-Teachers' Associations all over the country.
- **FIRST CHOICE** in a survey made on Clothing Buying Habits by the Psychological Corporation of America.



*Congratulations
Grads . . .*

BUT YOUR
EDUCATION ISN'T
COMPLETE YET . . .

*... Not Until You've Learned To
Shop at Sears and Save!*

The smart buyer demands the most for his dollar in quality and merchandise . . . and you'll find these whether you shop at Sears Retail Store or through the big catalog . . . yes, for better selections, greater savings, and easier shopping all of the time, every time, it's Sears, your complete ONE-STOP store.

Sears, Roebuck and Co.

MAIL ORDER

MEMPHIS, TENN.

RETAIL STORE

Phone 8-3869

Dr. Geo. T. Roy

Optometrist

44 So. Main St. Near Monroe
2nd Door North of Warner Bros. Theatre

Memphis, Tenn.

— Phone 2-8124 —

Howard Graham Company
INC.

Complete Home Furnishers

1359 Madison at Crosstown

Memphis, Tennessee

Quality Counts Now

Abros Meat Products

Serve Uncle Sam and You

ABRAHAM BROS. PACKING CO.

Memphis

Compliments of

Lytle McKee & Company

COTTON

STRATTON-WARREN HARDWARE CO.

Wholesale Exclusively

MEMPHIS TENNESSEE

DISTRIBUTORS OF SHELF AND HEAVY HARDWARE

Unit Stoves, Heaters and Ranges, Hot Point Electric Refrigerators,
Vulcan and Chattanooga Plows, Zenith and Sentinel Radios,
Sporting Goods, Red Jacket Pumps, Water Systems, and Water
Conditioners

— *Manufacturers* —

HARNESS, COLLARS AND LEATHER GOODS

STRATTON-WARREN HARDWARE CO.



Compliments of

**ANDERSON, CLAYTON
& COMPANY**



DEATON & BACHERIG

118 Madison Avenue

**SMART CLOTHES FOR MEN
AND YOUNG MEN**

Furnishings and Stetson Hats

Phone 5-3040

"Make It Your Home"

Tom Deaton, Proprietor



ENRICH THE YEARS WITH

Brodnax Gifts

for wedding, birthday, anniversary, every occasion

\$1, \$2, \$5 on

☆ **B R O D N A X**

GEO. T. BRODNAX, INC. • JEWELERS • STATIONERS

MAIN AT MONROE • MEMPHIS

Headquarters for School Pins, Rings, Fraternity Jewelry

OAK HALL
THE SOUTH'S PREFERENCE
For College Men

More than 55 Years

At 55 North Main

THE PARADE OF STARS

Jack Benny, Bob Hope, Fibber McGee, Charlie McCarthy, Bing Crosby,
Rudy Vallee, and many other top-notch night time shows, over

W M C
790 on your dial

*The Station **MOST** People Listen to **MOST**!*

**Hospitality
Headquarters**

... in down-town Memphis

Designed for your Thirst



Open Daily at 11 A.M.

HOTEL GAYOSO

C.C. Cartwright, President & Gen. Mgr.

MEMPHIS, TENNESSEE

—★—
1842 1943

OVER ONE HUNDRED YEARS OF HOSPITALITY

CANOVA COFFEE

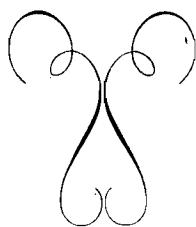
Commencement of
Coffee Satisfaction



TRY IT!

It Sure IS Good Coffee

Congratulations
to the
CLASS OF 1943



CONNORS BROKERAGE CO.

CARVER & GRIFFITH

NOLEN-VAIDEN BROKERAGE CO.

JACOB PERES & CO.

IRA SAMELSON & COMPANY

MICHIE-McNEILL BROKERAGE CO.

H. S. FULCHER & CO.

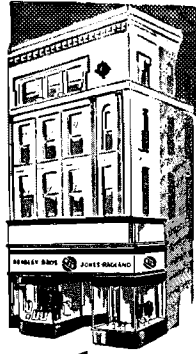
McKNIGHT & PATTEN

DONELSON & POSTON

MEMPHIS FOOD BROKERS

The Store for
Men and Young
Men

BJR
99 SO. MAIN



Yes, Sir . . .
That's My Store!

Beasley Bros. Jones. Ragland
★ 99 SOUTH MAIN STREET ★



Compliments of

**T. J. WHITE &
COMPANY**

COTTON



WITH BEST WISHES

FROM

PIDGEON-THOMAS IRON CO.

HOME OF

"50,005 Structural and Maintenance Supplies"

YORK ARMS CO.

"If it's SPORTING GOODS
... we have it"

162 So. Main St.

8-1217 — PHONES — 8-1218

Compliments of

**Cosmopolitan
Life Insurance Company**

Memphis, Tennessee

ORGILL BROTHERS & CO.

WHOLESALE HARDWARE

Founded 1847 by William and Edmund Orgill

Memphis, Tenn.

Jackson, Miss.

Compliments of

**University Park
Cleaners**

613 N. McLean

Memphis, Tenn.

Compliments of

**TED I. LEWIS
COTTON**

112 S. Front St.

Memphis, Tenn.

H. L. Guion & Co.

Real Estate—Insurance

For 75 Years

New York—50 Wall St.

Memphis—Hotel Peabody

Oliver P. Cobb & Co.
Accountants and Auditors

Oliver P. Cobb

Certified Public Accountant

To Southwestern's Success

**Rhodes Jennings
Furniture Co.**

Compliments of

**F. G. Barton Cotton Co.
Cotton Factors**

Memphis, Tenn.



THOSE WHO KNOW—GO

MALCO

The South's Finest Theatre

Presenting the Best in Motion Picture
Entertainment



Compliments of

W R E C

Voice of Memphis

HOTEL PEABODY

PHIL A. HALLE

Exchange Building

Recognized as the South's Style Creating Clothiers, Haberdashers, Hatters,
Booters, and Custom Shirt Makers to Particular
University Men and Women

Compliments of
Guaranty Mortgage & Trust
Mortgage Loans

— and —

**Metcalf Bros. Guaranty
Insurance Agency**

Fire and Casualty Insurance

Compliments of

W M P S



PIG'N WHISTLE

1579 UNION AVE.

Herbert Hood, Jr., Pres.

Call ORKIN Today

There is no need to tolerate unsanitary conditions in the home. ORKIN will quickly rid your home of insect pests and vermin.

Call 8-7311

No Charge For Inspections
and Estimates

The Drink

Everybody Knows

COCA-COLA





Liberal Real Estate Loans
Fire, Automobile and General Insurance

E. H. CRUMP & CO.

North Memphis Savings Bank Bldg.

6-3683

The South's Largest Direct Writing Insurance Agency

Rex Billiard Supply Co.

18 So. Main St.

Under Bond Clothing Store

SANDWICHES

POCKET BILLIARDS, SNOOKER

BILLIARD SUPPLIES

John Turcott

5-9263

Eat with Dr. Nick ...

at the

**SOUTHWESTERN
GRILL**

Compliments of

D. CANALE & CO.

408-418 South Front St.

MEMPHIS

One of the Finest, Most Complete Funeral Homes in America



NATIONAL
Funeral Home

PHONE 2-2113

1177 UNION AVENUE

The public is cordially invited to visit and inspect this beautiful home at any time.

National Funeral Home renders all Funeral Services for Policyholders of the National Burial Insurance Company

Loew's Palace

Always the Best of Screen

Entertainment

FOR FUN . . .

Meet Your Friends at

The Magnolia Gardens Roof
in Summer

The Balinese Room
Fall and Winter

Presenting America's Finest Orchestras

Hotel Claridge

Compliments of

**National Rose Spring
& Mattress Co.**

Memphis, Tenn.

**Sam Fortas House Furnishing
Company**

145 No. Main St. Corner Washington

Phone 5-3515

Our every good wish for your
Future along Life's Highway

From the Staff of

PETE FRIEDEL'S
Famous Drive-In Restaurant



May I have the pleasure of continuously
serving you in the future as I
have in the past?

PETE FRIEDEL

Compliments of

Hulsey & Nebhut
COTTON

Memphis, Tennessee

Wm. Hulsey

F. I. Nebhut

Compliments of

A FRIEND

Southwestern Graduates

of 1943

WILL FIND BUSINESS SUCCESS

By Choosing

"Memphis' No. 1 Business School"

Miller-Hawkins

DO NOT DELAY YOUR ENROLLMENT!

Thorough training now will prepare for
efficient war service and assure
post-war positions.

Entire Second Floor—158 Madison

"The South's Finest . . .

One of America's Best"

HOTEL PEABODY

Memphis, Tennessee

WELCOMES

Southwestern Students



Dining and Dancing Nightly in the

SKYWAY

Nationally Known Orchestras

F. R. Schutt, Vice-President & Gen. Mgr.

WISHING

every Southwestern Student
success and prosperity



**Leo Kahn Furniture
Company**

B. E. Boothe & Company

COTTON MERCHANTS



Memphis, Tenn.

INTER CITY TRUCKING CO.

Serving

Most of the Towns

in the Mid-South

Dependably

285 GAYOSO AVE.

PHONE 8-4267

To-Day
QUALITY MEANS
EVERYTHING



For a Smart Choice

THE

Geo. W. Hayley Studio

Portrait Photography

751 POPLAR • PHONE 5-1927



On To Victory

V...—

HANSON ENGRAVING CO.
MEMPHIS, TENN.





BRIDES OF FOUR WARS HAVE
FAVORED

Toof-Engraved

- ☆ WEDDING INVITATIONS
- ☆ AND ANNOUNCEMENTS
- ☆ CORRECTLY WORDED—PROMPTLY EXECUTED
- ☆ DISTINCTION—WITHIN THE BRIDAL BUDGET



S. C. TOOF & CO.

PRINTERS · LITHOGRAPHERS · STATIONERS
195 MADISON AVENUE · MEMPHIS, TENN.



SOUTHWESTERN

MEMPHIS, TENNESSEE

A Standard College of Arts and Sciences
A College of High Ideals and Personal Attention

The greatest thing about a college is the character and ability of its instructors. A grateful pride is felt in the faculty of Southwestern. The greatest care has been used in the selection of these men. They are all Christian men of sound scholarship and they are great teachers.

The architecture is of the collegiate Gothic type and the plant is entirely modern, beautiful and enduring.

Nothing has been spared that contributes to the highest good and efficiency of the individual student, and as a result Southwestern offers unusual advantages.

Autographs.
