

1985-86
C.1

STUDENT HANDBOOK

1985-86

A Guide to Rhodes College

Steve Harmon, editor
Susan Young, assistant
Donnie Stansell, photography
Mark Edge, proofreading
Starr Printers, printing

“The information contained herein was prepared and published by the Student Publications board in an effort to acquaint new students with the organizations and activities at Rhodes College. However, the contents hereof have not been officially reviewed or approved by the administration of the college, nor do the contents hereof constitute any portion of the contractual obligation between the student and the college.”

Our Story

Before its move to Memphis, the college was located in Clarksville Tennessee, where it had its origins in the Clarksville Academy, founded in 1837. The Academy conveyed its property in 1848 to the Masonic Grand Lodge of Tennessee and was merged into the new Masonic University of Tennessee, a degree-granting institution of higher education. This institution became Montgomery Masonic College in 1850, and in 1855, its name was changed to Stewart College, in honor of its president, William M. Stewart. Under President Stewart's leadership the operation of the college passed from the Masonic Lodge to the Presbyterian Synod of Nashville.

Under the "Plan of Union" of 1873, the Synods of Alabama, Arkansas, Memphis, Mississippi, and Texas joined the Synod of Nashville in a cooperative effort to reorganize Stewart College after the Reconstruction Era and to operate it as a single Presbyterian college for the entire area thus represented, which was at that time commonly considered to be the Southwest.

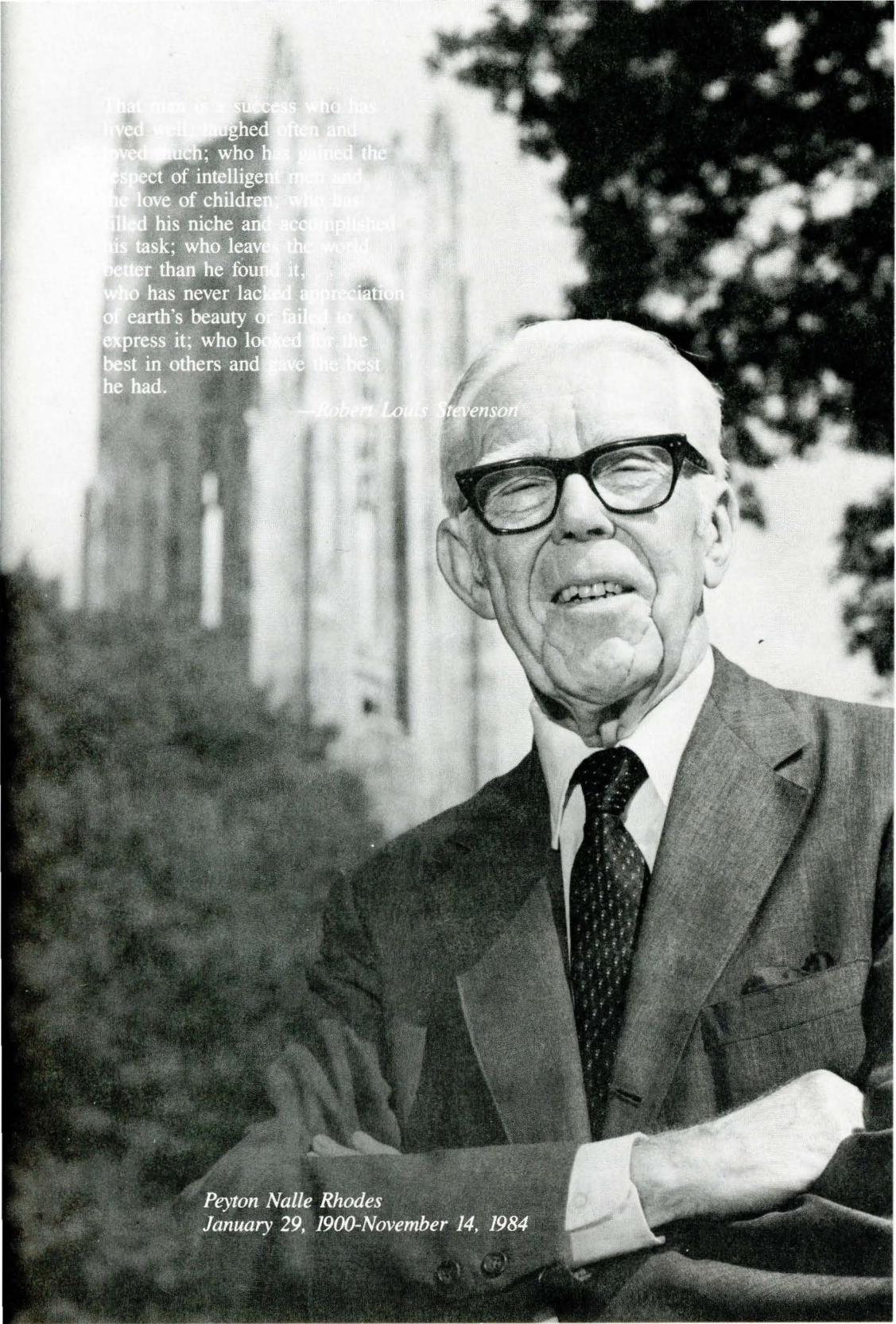
In 1875, Stewart College became Southwestern Presbyterian University, developing alongside the undergraduate curriculum a School of Theology, which remained in operation until 1917. When the college moved to Memphis in 1925, it adopted as its official title Southwestern At Memphis, denoting a liberal arts college.

In 1973, a general reorganization of boundaries of synods within the Presbyterian Church instituted the college's present relationship with two larger synods. The former Synod of Louisiana is now part of the Synod of Red River, and the former Synods of Mississippi, Alabama, and Tennessee are now part of the Synod of the Mid-South. Rhodes College's relation to the Presbyterian Church in the United States has remained close and unbroken since 1855.

In the summer of 1984, a special session of the Board of Trustees convened to consider changing the name of the college due to possible confusion with other institutions named Southwestern. After much debate, the Board voted to change the name of the college to Rhodes College, in honor of Peyton Nalle Rhodes, a former president of the college.

That man is a success who has lived well; laughed often and loved much; who has gained the respect of intelligent men and the love of children; who has filled his niche and accomplished his task; who leaves the world better than he found it; who has never lacked appreciation of earth's beauty or failed to express it; who looked for the best in others and gave the best he had.

—Robert Louis Stevenson



Peyton Nalle Rhodes
January 29, 1900–November 14, 1984

administration

It is important to remember that the administration here at Rhodes College is here to help. Don't let them intimidate you; with few exceptions, we actually have human beings working here. The administration cares about you and your experience here and they will be glad to assist you in any way possible, so many of them offer an open-door policy, although an appointment is always encouraged to make sure that they will be available. This section lists those that you will most likely come into contact with during your stay at Rhodes.

president of the college

James H. Daughdrill, Jr.
329 Palmer Hall, Gooch Wing (3730)

The president is the chief spokesperson of the college as well as the chief officer of the administration and faculty. The president, in promoting the interests of the college, spends much of his time in meetings and out-of-town. As the head of the college, he delegates much of his power to keep Rhodes running smoothly and so you should approach the appropriate office before coming to the president.

vice-president and dean of the college

Gerald Duff
225 Palmer Hall, Gooch Wing (3795)
Hours: 8:30-12:30; 1:30-5:00

Working with the faculty members and individual departments, he seeks to maintain the variety and standards of the educational system, to secure new faculty, and to safeguard student and faculty freedoms and interests. This office deals with all academic matters, including the Dean's list and academic probation.

associate dean of the college

Robert Llewellyn
221 Palmer Hall (3795)
Hours: 8:00-5:00

A key function of the Associate Dean is to coordinate the "faculty-advisor" system. Each student is assigned an advisor when he or she first arrives at Rhodes. When students have declared their majors, they are assigned an advisor in the appropriate department. This office assists the Dean in many other academic and organizational matters. Students are encouraged to discuss petitions with the Associate Dean.

dean of students office

C. V. Scarborough, Dean of Students
Frayna E. Goodman, Assistant Dean of Students
Drew Klein, Director of Student Activities
229 Gooch Hall (3815)
Hours: 8:30-5:00

This office oversees all student extracurricular activities, student residence halls, campus organizations, the student counselor program, and many other aspects of community life. This is the place to go when you are in a bind or simply seeking a helping hand. This office maintains the college calendar and hears requests for use of campus facilities.

C. V. "Bo" Scarborough is in touch with the students on a day-to-day basis by hearing complaints, offering advice, etc. His is a mammoth job: keeping the relations between the students of the community running as well as possible.

Focusing on such groups as dormitory residents, Black Students Association (BSA), Town Students, Panhellenic (PAN), and Inter-Fraternity Council (IFC), Frayna Goodman is responsible for helping to coordinate all the events these organizations offer to the campus. She also maintains a listing of various off-campus housing opportunities for Rhodes students. Frayna is also responsible for keeping the Resident Advisor system running smoothly, from planning campus events to investigating dorm damage.

Drew Klein is in charge of coordinating student activities. He plans the Freshman Orientation Program, Parents' Weekend, and assists in Campus events, Social Commission affairs, Student Center activities, and the grill. He welcomes any and all suggestions for improving the social life at Rhodes.

admissions

Dave Wottle, Dean
100 Palmer Hall (3700)
Hours: 9:00-5:00

This office is responsible for attracting quality students (like you) to Rhodes, through high school visits, on-campus programs and a special college symposium for prospective students. The success of their programs depends very heavily on the help of current students. This entails everything from giving campus tours to offering overnight housing to participating in a phone-a-thon which answers prospective students' questions. Your involvement is greatly appreciated, so keep your eyes open for an organizational meeting in the fall.

administrative services

Tom Kepple, Dean
103 Palmer Hall (Ext. 3761)

Dean Kepple oversees the College's business and financial operation and the physical plant. He welcomes student input and is always available to speak to student groups with reasonable advance notice.

Mr. Howe, our new Director of the Physical Plant, is now "THE MAN" to talk to about water faucets, etc.

bookstore

Jane Darr, Manager
Debbie Jordan, Assistant Manager
Hope Armstrong, Administrative Assistant
Hours: 8:30-4:00

Located on the west side of the first floor of the Briggs Student Center, the Bookstore provides full service for the entire Rhodes community. Any proceeds above operating costs are directed into the general operating fund. Visa and MasterCard are accepted here. In addition, credit privileges are extended to students upon completion of a credit application and approval from the Cashier's office.

Your major investment at the Bookstore will be to purchase your textbooks. An average of \$150.00 should cover the cost of first term coursebooks depending on the curriculum you follow. Remember that prices are established by the publisher and not by the Bookstore. Used books are offered in as many titles as possible. Full refunds will be given on all clean, unmarked textbooks with receipt within ten days following the start of the term. Also, the Bookstore will buy books at the end of each term from students.

Other Bookstore services include: General Reading (they will be glad to order a book which is not in stock at no extra charge), college sportswear, health and beauty aids, film and film processing, postage stamps and stationery, and snacks.

computer center

Charles Lemond, Ph.D., Director
300 Palmer

Rhodes has two computers available for use by the faculty, staff, and students, DEC VAX 11/785 and a DEC VAX 11/750. Both machines are located in 300 Palmer, with terminals placed at various academic libraries on campus. The main block of terminals is located in the basement of Burrow Library. No charge is made for students wishing to use the computing facilities, and one need not be enrolled in a computer course in order to obtain a number. Accounts will be issued to all students at registration. Don't feel like you have to be a scientific whiz kid to learn how to operate the computer; there are programs available which anyone can learn to help you in typing and editing term papers. See the staff for more details.

registrar

Glenn Munson
108 Palmer Hall (Ext. 3885)
Hours: 8:30-3:00

Class schedules, exam dates and times, forms for drop/add, pass/fail, and major declaration petitions for directed inquiry, overloads, and waivers for academic regulations can be found in this office as well as transcripts (there is a \$2.00 fee after the first one), degree requirements and general information.

cashier's office

Sarah Bowlan, Cashier
105 Palmer Hall (3753)
Hours: 8:30-3:30

Pay tuition, fees, fines, and parking tickets here. Mrs. Bowlan is willing to help with any accounts; if you are confused go to her. All UPS, Special Delivery, and Certified letters are delivered here. Stamps and scales for weighing parcels are available.

Students may cash checks for up to \$25.00 a day (make checks out to Rhodes College) and may set up student deposit accounts. A student deposit account offers no interest and check writing is not necessary. The program allows the student to withdraw up to \$35.00 a day from the account without prior notice. One day prior notice allows for an unlimited release of funds.

The cashier's office also serves as the college's Lost-and-Found depository. Come here when you leave your retainer on a tray in the refectory.

infirmary

Doris Gill, Resident Nurse
Moore Moore Infirmary (Ext. 262)

Infirmary Hours:

Weekdays 8:00 a.m. - 10:00 p.m.
Weekends 8:30 a.m. - 10:00 p.m.

Strategically situated next to the refectory, the Moore Moore Infirmary has 13 beds with 24 hour health care extended to all full time students. Flu shots are offered in the fall for the price of the serum. Allergy shots can also be administered in the Infirmary. Shots are free, but a small fee is charged for the disposable syringes. Bring your medication, with directions, to the Infirmary when you arrive on campus. Make sure you bring a large enough supply to last until you return home; out-of-town prescriptions are NOT refillable.

Certain routine medications and services are furnished free of charge as part of the Infirmary's function. Special services, x-rays, and laboratory work are billed directly to the student. If you have to go to the emergency room, be ready to pay cash or a check from a local bank; out-of-town checks are not accepted. (In other words, when you're planning to go out and have an appendicitis attack — make sure you cash a check before the Cashier's Office closes). Night emergencies should be reported to your R.A., and he/she will contact the nurse.

You should keep a steady supply of band-aids, aspirin and thermometers in your room in order to avoid a walk to the infirmary every time you scratch yourself.

The nurse's hours vary daily according to the doctor's visits. SEE THE NURSE FOR A DOCTOR'S APPOINTMENT.

security

Col. Max McQuown, Director
Frances Falls Building

This office is responsible for the personal safety and the security of the students, faculty, and staff and the security of the physical plant and the grounds of the college. This office implements the traffic-parking control policy — to avoid penalty, parking stickers must be picked up the first week of school. The campus at Rhodes is, on the whole, a safe place to live. However, you should remember that it is located in the Mid-town area of a large city and take appropriate precautions (lock your dorm room, don't walk across campus late at night, etc.) Security offers an escort service if you need to walk across campus at night, just give them a call and they'll be over as soon as possible.

Security also oversees the college's access system to academic buildings. Students enrolled in the natural and political sciences, art courses, and applied music courses may request from their instructor access which allows them to be admitted to the library (and some labs) of the building in which they're studying after hours, when the building has been locked. To take advantage of the access system, go over to the security building and sign-in and the security guard will come over to let you in.

financial aid

Ray Allen, Dean
109 Palmer (3810)
Hours: 8:30-3:00

Financial aid, other than scholarships, is based upon an analysis of the Financial Aid Form submitted by the student to the College Scholarship Service. Annual awards or awards made by the Financial Aid Committee can be appealed by submitting a request to the Committee through Dean Ray Allen. A request for renewal of all financial aid must be made in the winter on the prescribed form available in this office.

Students who are assigned jobs through the College-Work Study Program or campus employment are paid every other Friday morning. Paychecks are placed in the student's mail box in Briggs Student Center. Inquiries concerning job assignment should be directed to Mrs. Shirley Frisch in that office.

development

Don Lineback, Dean
4th Floor Halliburton (3850)

The purpose of the Development Program is to provide service to alumni, parents and other constituent groups and to encourage their voluntary and monetary support of Rhodes College. Gifts from these groups provide scholarships, library books, laboratory equipment, buildings, and endowments. Students help Rhodes by serving on the Student Development Committee, the phonathon, and through the quality of work they do, which receives attention beyond the campus. The sum total of these efforts reduce by about 40% the amount of tuition that would otherwise have to be charged.

chaplain

Pat and Ron Lovelace
305 Briggs Student Center (Ext. 307)

The Chaplain, working closely with the Religion Commissioners of the SGA, coordinates the many religious activities on campus and is always available to counsel you about your religious and personal concerns. For those interested, a non-denominational, non-mandatory chapel service is given Tuesday mornings at 9:40 in Hardie Auditorium.

counseling and placement center

Libby Robertson, Ph.D., Personal Counselor
Tina Fockler, M.S., Placement Officer
301 Briggs Student Center (3800)

The Counseling and Placement Center staff are available by appointment to assist you with a variety of needs or concerns.

The Personal Counselor will provide you with an atmosphere where personal concerns of any type may be examined and discussed freely and confidentially in order to increase the chances of adequate resolution. Dr. Robertson is experienced at working with students on many issues such as stress management, assertiveness training, study skills, interpersonal and emotional concerns. No stigma should be attached to going to the Counseling Center; there comes a time when everyone needs someone to talk to, to listen, or merely just an impartial third party to bounce ideas off of and Dr. Robertson is there to help.

The Placement Service looks forward to helping you pursue your career goals. Whether you are considering immediate employment or graduate or professional school, the staff is ready and willing to be of assistance to you. A variety of programs and services has been developed to assist you in determining and implementing your career and educational strategies. Through personalized, individual counseling, Vocational Testing, job search advising, and a series of job search seminars (e.g. resume writing, interview skills, job outlook, current salary offerings) individuals using the Placement Service will develop a better understanding of themselves and the opportunities that await them upon graduation from Rhodes.

In addition, the Placement Service houses a Career Information and Employment Library to help you in obtaining information about occupations and employment options. Included in the library are a number of self-help materials developed by the staff. Current lists of full-time, part-time, and summer employment opportunities are available for your review.

Students wishing to use the Placement Service to interview with various employers for summer or permanent employment must establish a placement credential file prior to interviewing. Please check with the Placement Office about how to set up your credentials file.

library

Lynne Blair, Director

Burrow Library

Hours: Monday-Thursday	8:00 a.m.-midnight
Friday	8:00 a.m.-9:00 p.m.
Saturday	1:00 p.m.-5:00 p.m.
Sunday	1:00 p.m.-midnight

(with special extended hours during exams).

Many students study in the library since there are large tables in the reference room, carrels in the stacks, and comfortable chairs in the lounge downstairs. In addition, the library is a quieter and less distracting place to study than in your dorm room (especially if your next door neighbors play their Van Halen tapes at full volume).

Books may be checked out with the presentation of your I.D. or library card number which is issued to you when you first use the library (bring your I.D. for this). You will be required to know your library card number when checking out materials. Books are due on Wednesdays, so you can check your books each Wednesday for due dates and avoid having to pay fines for them.

RESERVE BOOKS: Some Reserve Books are Regular Reserves and are checked out for two hours during the day, with an overnight checkout at 4:30 p.m. and due at 10:30 the following morning. Fines are 25 cents the first hour (or portion thereof) and 5 cents each additional hour. Some Reserves are **LIBRARY USE ONLY**. Be sure you know which you are checking out to avoid a steep fine since L.U.O.'s are \$1.00 for taking out of the building with \$1.00 additional fines.

PERIODICALS are always **LIBRARY USE ONLY**—\$1.00 fine for removing with additional fines accruing. Bound volumes are located on the basement floor of the stacks. Unbound issues are available at the Desk.

MUSIC RECORDINGS for your music classes are in the music building, Hassell Hall. Some other music selections and **SPOKEN RECORDINGS** (plays, poetry, etc.) may be checked out at the Circulation Desk. These may not be taken from the library but are to be used in the listening rooms (also available for check-out at the Desk).

Adjacent to the Circulation Desk is the **REFERENCE DESK**. In addition to regular reference information, **DIALOG** online reference can prepare customized bibliographies for nearly any topic you are researching. (You will need an appointment for this).

Additional libraries are found on campus in the Physics, Chemistry, Math, and Clough buildings. These satellite libraries house abstracts and journals peculiar to that department.

Other libraries available for your use are the Memphis State, Christian Brothers College, Memphis Academy of Arts, and the Memphis Public and Shelby County libraries.

MSU Library Hours: Monday-Thursday	7:40 a.m.-midnight
Friday	7:40 a.m.-10 p.m.
Saturday	9 a.m.-6 p.m.
Sunday	1 p.m.-midnight

Memphis Public Library Hours: Monday-Thursday 9 a.m.-9 p.m.
Friday-Saturday 9 a.m.-6 p.m.
Sunday 1 p.m.-5 p.m.

(The branch on Peabody is within biking distance.)

PLEASE NOTE: All books are due at the end of each term and you MUST BE CLEAR from all libraries to validate for classes at Rhodes.

refectory

Chuck Carter, Director
Burrow Refectory (3541)

Hours:	M-F	S-S
Hot Breakfast	7:00-9:15	8:00-9:00
Continental Breakfast	9:00-10:30	9:00-10:30
Lunch	11:30-1:30	12:00-1:15
Supper	4:45-6:30	5:00-6:00

The Catherine Burrow Refectory is the College dining hall. ("Refectory" is a medieval term applied to the dining halls of monasteries and convents.) Affectionately known as "The Rat", this is the place where minds and stomachs meet.

ARA will continue a seventh year as the food service at Rhodes. In the past they have planned such features as Thursday's Buffet Night, holiday meals, ice cream treats, and late night study breakfasts at exam time. A student food committee works with the food service to air your comments and suggestions, and to try to bring you what you want.

The Honor Code applies to the refectory. Non-boarding students can purchase discount meal tickets at the cashier's table. It is also against the Honor Code to take utensils, dishware or food out of the refectory for later use.

physical plant

E. Dudley Howe, Director
Austin Building (3870)

The Physical Plant Department is responsible for maintaining all physical and mechanical systems, utilities, routine interior housekeeping, grounds maintenance, and the operation of college owned vehicles. Requests for dormitory services must be made on forms provided by your resident advisor. All other requests should be directed to the Physical Plant Office.

student mail

The student mailroom is located in the lower level of the Student Center. A student mailbox is provided for all regular and part-time students. (Irregular students should stand with open arms at the foot of the laundry chute in the basement of Voorhies). The cost of the mailbox is included in tuition. Mailbox keys will be distributed at the same time room keys are. Use your *complete* name on all correspondence. (Although the mailroom employees are superior in intelligence, they have no idea who "Charlie Brown," "Madonna," or "Sweet Cheeks" is.) Town students are encouraged to use their mailbox since intra-campus messages are sent via these mailboxes.

Mail is received Monday through Saturday and distributed to the student boxes by 10:00 a.m. Parcels too large for the mailboxes are located in the work area of the mailroom. Package notices are used to notify you of a package (clever how it works that way, isn't it?) Packages sent by United Parcel Service (UPS) are delivered to the Cashier's office in Palmer Hall, and a notice is made and put up in the student mailboxes.

grill

The grill is operated as a service for the students, faculty and staff by the Publynx Corporation. All surplus funds are used to improve student activities and services. The grill is staffed by students and serves a variety of fast foods and specials. You should watch for weekly specials.

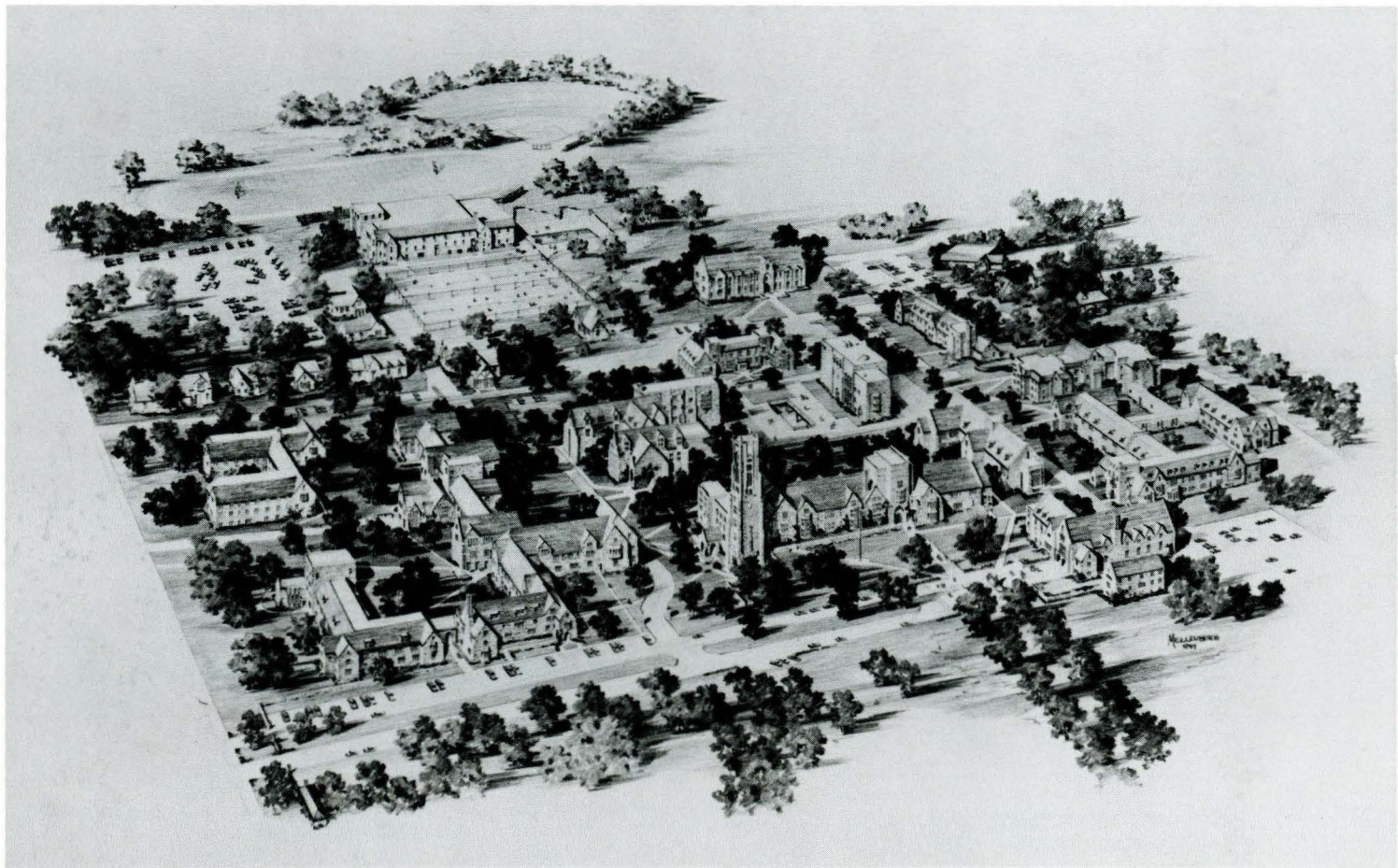
Hours: Monday-Thursday	9:30 a.m.-2:00 p.m. 6:00 p.m.-midnight
Friday	9:30 a.m.-2:00 p.m. 8:30 p.m.-midnight
Saturday	8:30 p.m.-midnight
Sunday	6:00 p.m.-midnight

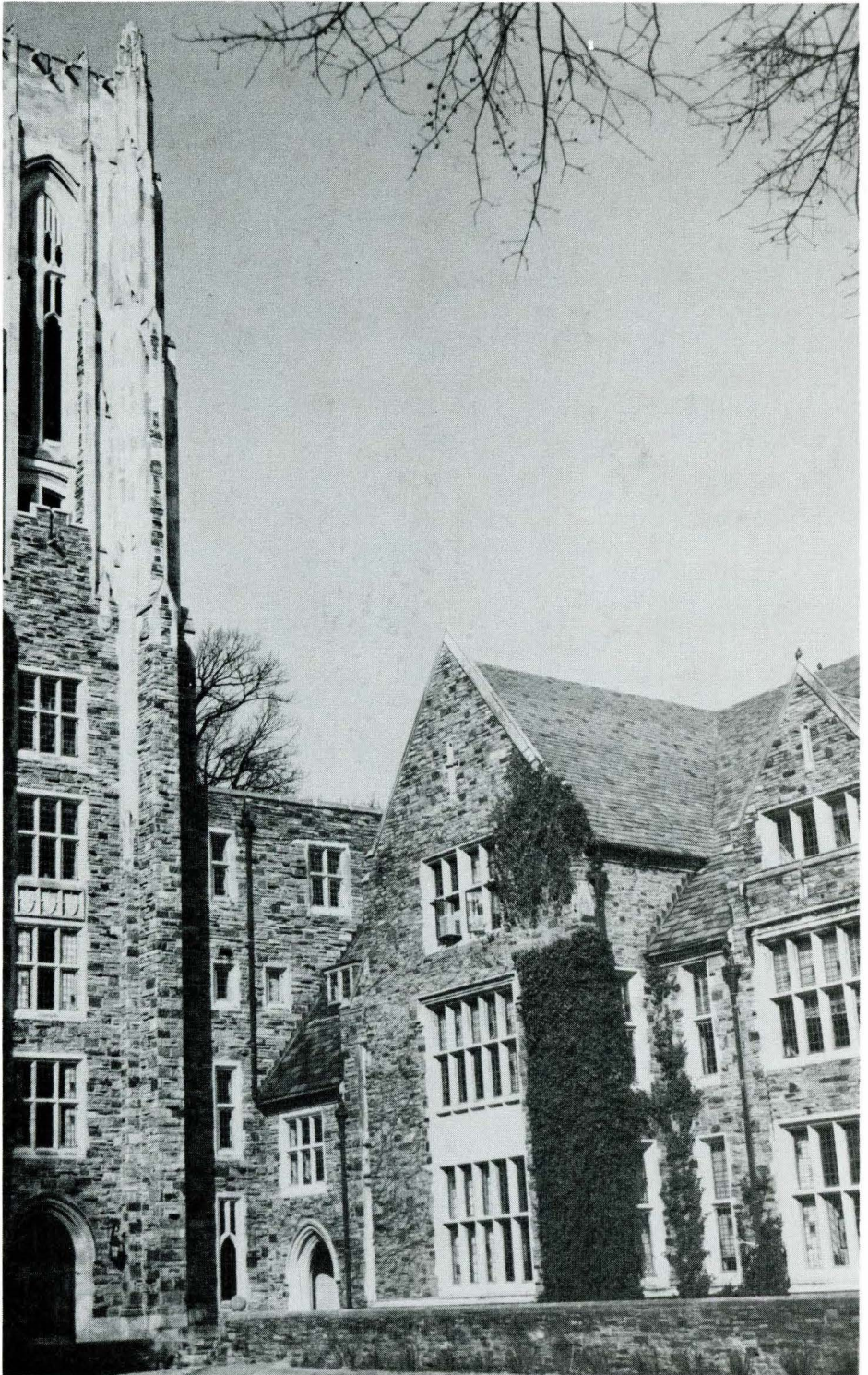
In addition, the Social Commission, a group of students, works to make the Student Center a lively place for students to gather. With a small budget, the group sponsors a wide variety of activities for the student body: bands, movies, and a student center weekend in the spring. General membership comes from participation.

dorms

There are two types of dorms on the Rhodes campus; "open" refers to no restrictions or curfew hours for opposite sex, "closed" refers to restricted visitation times (off limits from 12:00 midnight-8:00 a.m.)

Coin-operated washing machines and vending machines are located in almost all dorms. Draperies and carpeting are available in Williford only. Some beds in most dorms are oversized, so it might be better to wait before you buy your fitted sheets. Pets are restricted to the aquarium or cage type. To answer your 482 other questions, you will be assigned a student counselor soon, and he/she will be able to answer your questions by personal letter. Also please note that all dorms will be closed during Christmas, Spring Break, and part of the summer. So make plans unless you intend to sleep on the roof.





CALENDAR

TERM I

Orientation for New Students	Sept. 8-11
Registration	Sept. 11
Classes Begin	Sept. 12
Fall Recess	Oct. 18-23
Pre-Registration for Term II	Nov. 25
Thanksgiving Recess	Nov. 27-Dec. 2
Reading Day	Dec. 12
Final Exams	Dec. 13-18
End of Term I	Dec. 18

TERM II

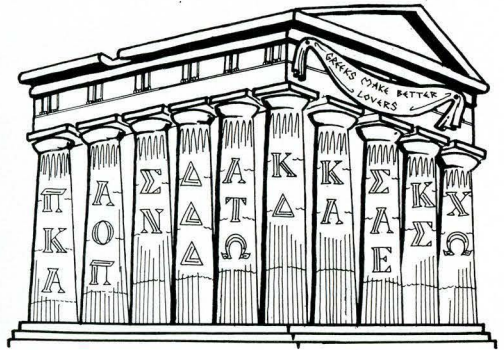
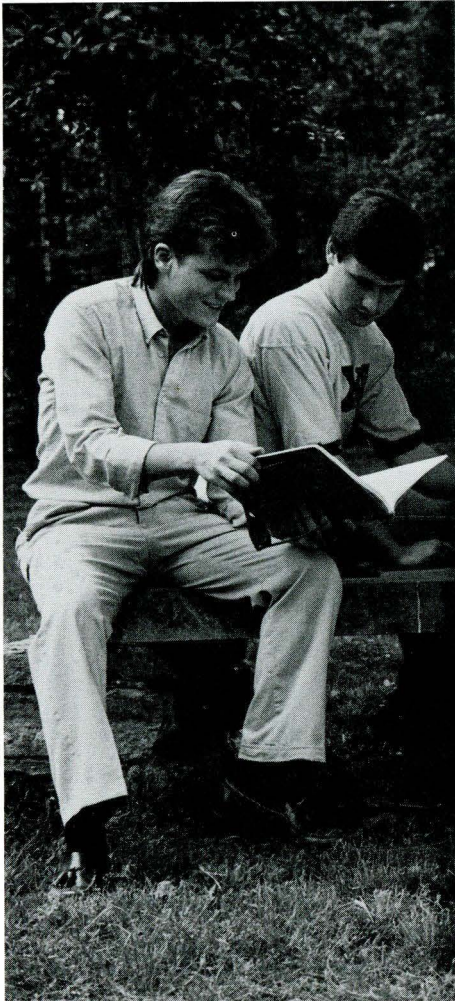
Registration-Validation Day	Jan. 6
Classes Begin	Jan. 6
Winter Recess	Feb. 14-19
Pre-Registration for Term III	Mar. 7
Easter Recess	Mar. 27-31
Reading Day	Apr. 2
Final Exams	Apr. 3-8
End of Term II	Apr. 8

TERM III

Registration-Validation	Apr. 14
Classes Begin	Apr. 14
Pre-Registration for Sept. '86	May 9
Reading Day	May 24
Final Exams	May 26-28
Baccalaureate Services	May 30
Graduating Exercises	May 31

campus life

There are many ways for the student to get involved in Rhodes clubs and activities. No experience is usually necessary, just an active interest to get involved. For the politically minded, there is the Student Government Association, Social Regulations Council, Honor Council, and the Committee for Political Awareness. The Kinney program offers students a chance to serve the world beyond the Rhodes community. Publications offer practical experience from layout to writing to editing and much more. And the list goes on and on . . . As you read about the clubs that follow, keep in mind that they're student run and student supported. So don't be afraid to talk to the people listed below if you have an interest. Some of the most valuable part of your Rhodes education will be spent out of class, so seize the chances and opportunities listed below.



resident advisors

These people are a vital part of communal living. They form a liaison between you and the administration. If you have any problems—room changes, ants, maintenance, or personal—go to them: they are trained to help. An R.A. will be on duty in your dorm every night from 10:00 p.m. until morning, so if you have any problems or questions, complaints or suggestions at these times, you will know where to find them.

RA'S 1985-1986

TOWNSEND	ROOM	PHONE
Ira Jackson	100	3200
Mose Payne	205	3215
Brian Meehan	314	3238
ROBB/WHITE/ELLETT		
Paul Eich	White 101	3373
Frank Wright	Ellett 205	3487
STEWART		
Mark Westfall	110	3533
Ron Kuhn	226	3529
GLASSELL		
Lance Baker	114	3022
Wright Bates	212	3047
Mike Thompson	224	3057
Lem Gorden	319	3075
TREZEVANT		
Katherine Bres	108	3258
Grace Dionisio	222	3276
VOORHIES		
LeVan Kimbrell	100	3301
UNIVERSITY		
Kristin Denmon	1-A	3167
WILLIFORD		
Dawn Bass	100	3400
Karen Moberly	214	3432
Mindy Gard	304	3448
Karen Beardsley	314	3458
EAST		
Christie Bates	1st floor	
Karen Cagle	3rd floor	
BELLINGRATH		
Laura Miller	110	3110
Amy Irwin	209	3130

student government association

302 Briggs Student Center

The main purpose of the SGA is to promote an exchange of ideas among students, faculty, and administration. With a total of 24 representatives—4 class, 4 at large, 2 town students, 10 dormitory and 4 officers, the SGA appoints students to serve on Faculty and Board of Trustees committees, oversees the allocation of SGA funds, and involves itself in most facets of college life. If you are interested, get involved! Many of the representative positions will be elected in the fall. The SGA also sponsors College Bowl, sponsors forums on topics of interest to students, and coordinates the Food Committee which works with the Refectory to ensure that student opinions and problems are dealt with.

President	Raymond Fields
Vice-President	Jeannie Garten
Treasurer	Stephen Estock
Senior Representatives	Brad Moody, Crista Crisler
Junior Representatives	Sumner Adams, Mindy Gard
Sophomore Representatives	David DuBard, Heidi Schultz
Freshman Representatives	To Be Elected
Board of Trustees Representatives	Jeannie Garten, Brian Mott, Wendy Tallent

All other representatives are elected in the fall.

The SGA also allocates jobs by commissions, each commissioner creating and carrying out projects in his or her area. Explained below are the six commissions. They depend on student support, therefore seek out your area of interest and contact the commissioner.

ATHLETICS COMMISSION:

Commissioners: Wright Bates and Jerrold Buckaloo

Serving as a link between the student and the athletic department, this commission's main concern is to make the students aware of the athletic opportunities at Rhodes. Be it varsity, intramural or individual sports, all questions can be answered through this commission.

SOCIAL COMMISSION

Commissioner: Erin Staunton

This commission hopes to draw upon the various art and talent groups on campus as well as bring in musical (jazz, new wave, rock, country, etc.) groups from elsewhere. Some traditional attractions include Homecoming Dance, Uncommon House and popular and classic feature-length movies.

WELFARE COMMISSION

Commissioners: Allan Bacon and Ahad Mahootchi

This commission is concerned with anything having to do with the improvement and furtherance of the educational experience. It initiates discussions, lectures, student and faculty welfare, and unity at Rhodes. This commission also sponsors rides to major transportation centers (the Memphis Airport, Greyhound and Trailways Bus stations, the entry ramp to Interstate 40) before and after holidays.

RELIGION COMMISSION

Commissioners: Anne Kaiser and Katherine Thomson

This commission will work closely with the chaplain to promote spiritual growth and religious activity. It plans to support groups such as Intervarsity Christian Fellowship, Evergreen College Fellowship, and The Fellowship of Christian Students. During your orientation you'll hear all about these. It will organize rides to the area churches and have weekly campus worship services. It also plans to have speakers, forums, and discussion groups to cover topics pertinent to the college student today and his/her faith. Any suggestions are welcomed!

ELECTIONS COMMISSION:

Commissioner: Stephanie Fuss

This commission handles the details of every student body election. Elections are announced two weeks in advance and petitions from the commissioner are available at that time. Voting is by secret ballot; the Honor Code applies.

PUBLICATIONS BOARD (PUB BOARD)

Commissioner: Marti Tippens

The opportunities available to you in publications at Rhodes are nearly unlimited. The Publications Board is the governing body over all publications. It selects new editors each spring, allocates money and settles conflicts in editorial policy. Members include all editors, class representatives (to be elected) and the commissioner.

There are currently 6 student publications at Rhodes meeting a variety of interests and needs. Students are entrusted with maintaining a balance between freedom of expression and responsible journalism. All students are encouraged to work on all aspects of publication—writing, layout design, art, etc. Quality publications thrive when enthusiastic students are involved.

Faces (*Karen Cagle, ed.*) is the directory of pictures, phone numbers, and addresses of students, faculty and administration. It is an invaluable aid!

The Lynx (*Michael Smith, Melissa Colvin, ed.*) is the Rhodes yearbook. It is a creative publication that attempts to give an overall picture of the life at Rhodes during that year. Watch for signs. (Thunderbolts from heaven, etc.)

The Sou'Wester (*Rob Finch, Grady Tollison, ed.*) is the student newspaper which covers student activities, current issues and articles of interest to the community. Published weekly.

The SFA (*Student-Faculty-Administration*) **Newsletter** (*Carolyn Brown, Elisa Allgood, ed.*) is a weekly bulletin that lists the upcoming events on campus.

Currents (*Phaedra Hise, Christine Tiede, Steven Brammer, ed.*) is the campus literary, scholarly and creative arts magazine. All the entries are original student and faculty works.

The Handbook (*Steve Harmon, ed.*) Obviously a prestigious publication.

social regulations council

As a member of a community of residents, you are expected to maintain a certain degree of respect for both your fellow students and the campus facilities. The Social Regulations Council (SRC) is designed to make community life at Rhodes as harmonious as possible, stressing an individual's personal responsibility rather than strict rules and guidelines. However, there are basic courtesies expected of all students at Rhodes and the SRC will, upon complaints by individuals, investigate and take judiciary action whenever necessary.

- President David Prasifka
- Senior Representatives Shane Griffin, Amy Donaho
- Junior Representatives Todd Speed, Lauren Wellford
- Sophomore Representatives Peter Emanuel, Gretchen Helmke
- Freshman Representatives To Be Elected

honor council

"I have neither given nor received aid on this test, assignment, or examination."

The freedoms and responsibilities of the Honor System are shared by all members of the Rhodes community. Far beyond the visible benefits such as unproctored exams, the access system, and take-home tests, the Honor Code demonstrates a commitment to truth and value by all Rhodes students and provides an atmosphere of honesty and respect that is unique to Rhodes.

The Honor Council, composed of an elected President, Vice President, and fourteen class representatives, has a positive, judicial role within the system. Its basic responsibility is to foster and protect a spirit of honor at Rhodes. It carries out this responsibility by educating the community and by acting as a court in a case of alleged dishonesty.

The Honor System applies to all phases of campus life. The four basic violations of the Code are cheating, stealing, lying in official matters, and failure to report a violation. If a person is found guilty, the Council imposes a penalty that is designed to uphold the system and also be beneficial to the individual.

Each student is furnished with an Honor Council Handbook (constitution) which should be read carefully and saved for reference. The freshman class will elect two representatives, one male and one female during first term. The Council is made up of Rhodes students who are concerned and interested. Please feel free to ask any members of the Council questions which may come up.

- President Kathryn Hughes
- Vice-President Ira Jackson
- Senior Female Representatives Lorraine Finke, Laurie Sides
- Senior Male Representatives Mose Payne, Ben Young
- Junior Female Representatives Allyson Hooper, Amy Jarvis
- Junior Male Representatives Lance Baker, Ira Jackson
- Sophomore Female Representatives Melinda Hall, Tricia Pennington
- Sophomore Male Representatives Elbert Hampton, Leighton Shantz

committee for political awareness

The Committee for Political Awareness provides a form for debate and education on current political issues. Organized by students, the CPA is open to all Rhodes students, faculty, staff, and alumni. Past programs have ranged everywhere from local public service groups to the nuclear arms race. In addition, the CPA sponsors educational campus workshops and conferences. Weekly meetings and forums are often given by students, so plan on sharing your knowledge with the CPA and educating yourself about numerous political issues.

black student association

Students of all races are encouraged to join the Black Students Association (BSA). The idea behind the organization is to make the integration of the races a more attainable goal. The primary function of the BSA is to foster multilines of communication among the Rhodes community, organizations of other colleges, and the Memphis community. Throughout the year the BSA stimulates the Rhodes campus by providing innovative speakers, social activities, and a wide range of events that promote interaction within the Rhodes society.

academics

Your best plan is to "know your catalog," it will save you time and worry. (I recommend the L.L. Bean Spring Catalog.) On pages 34-38 of your 1985-86 catalog are the requirements for graduation and the academic regulations of the college. Read it carefully. Students are responsible for the satisfactory completion of all requirements for graduation.

A Rhodes education is designed with individual students in mind. It encourages each student to explore and grow and take an active part in developing his or her college education. This, of course, places a responsibility on the student to take the initiative in exploring beyond traditional catalogue offerings, as vital as they are.

Special academic avenues are available and should be considered as viable alternatives in a liberal arts setting. These include: Interdisciplinary Majors; Internships; Tutorials; Directed Inquiries; Honors Projects; Undergraduate Research; Washington Semester; British Studies at Oxford; Rhodes Abroad; and Rhodes at New York.

During orientation you will find out who your colloquium leader will be: he/she will serve as your faculty advisor. This means that he/she will assist you in planning the courses you want to take and are required to have before you leave Rhodes. Fellow students (upperclassmen) are also a very valuable source of information, as are professors and department chairmen, who can best tell you about their courses, their department and what kind of career options are available. Get to know your professors! If there is something, anything, that you do not understand or want to know more about, then ask them. They are interested.

If you are interested in a professional or graduate school program, then you should see the appropriate advisor when planning out your schedule.

the arts

MUSICAL ACTIVITIES:

The Rhodes College Singers perform music from various periods of choral literature. The choir appears at several campus and city functions during the year, travels to churches and schools on a tour of the Mid-South each spring, and engages in foreign tour every third year.

Music students, under the guidance of the faculty, participate in the activities of such professional groups as the National Association of Teachers of Singing, the American Guild of Organists, Pi Kappa Lambda, and local performing groups such as the Masterpiece Festival Chorus and Orchestra.

Various ensemble opportunities are available as provided in the curriculum of the Music Department. A student pep band plays at college athletic events during the year. Additionally, students may receive private instruction in piano, organ, voice, guitar, flute, clarinet, violin, viola, cello, and harp. There are also faculty and student recitals, the faculty concert series, and special guest performances such as a recent performing jazz artists series.

Hassell Hall, the most recent addition to the campus, houses practice rooms, studios, a music library, and a recital hall. Whether or not a student is a music major, Hassell Hall is available for individual practice and for ensemble rehearsals.

THEATRE ACTIVITIES:

Rhodes College's McCoy Theatre provides excellent opportunities for students interested in any aspect of theatre from acting to technical support. The theatre facility is unique in the Mid-South, offering space that can be configured in a number of ways to accommodate a variety of set designs and arrangements for seating. The theatre is an integral part of the Department of Theatre and Media Arts, and a full complement of courses is available in this area under capable instructors.

There are three series offered at the McCoy: the Subscription Series, Studio Series, and Film Series. The Studio Series is designed for the student performer and director. The Subscription Series brings local actors, directors, musicians, and Rhodes students together in productions throughout the year. The inaugural production in the theatre was *CANDIDE*, selected as one of the best theatrical productions in Memphis in 1982. In the first full year there were five productions including *CARNIVAL* and *THE TEMPEST*. The McCoy has brought three productions to the Mid-South for the first time: *SWEENEY TODD*, *THE GONDOLIERS*, and *BEYOND THERAPY*.

One of the special events which will find its permanent home in the theatre is the much-lauded McCoy Visiting Artist Series. This series brings nationally and internationally known performing artists to campus not only to perform, but to visit with students, hold discussion/lecture sessions and conduct workshops. Among those who have shared their time and talent with Rhodes students are opera's dramatic soprano Nancy Tatum; noted dancer and choreographer Agnes de Mille; Swedish baritone Hakan Hagegard; The New Shakespeare Company of San Francisco; and actress Pat Carroll in her award-winning one-woman play "Gertrude Stein Gertrude Stein Gertrude Stein."

kinney program

Pat Lovelace

Student Coordinators: Ellis Gatewood, Lem Gordon

Office: 306 Briggs Student Center

The Kinney Program is something very special to Rhodes. It is a student-coordinated and staffed volunteer community service organization that involves about one-fourth of all students who attend Rhodes. On any given day, Kinney volunteers can be found visiting elderly shut-ins, taking a "little brother" to the zoo, or recording books for the blind. These students are bound by a common desire to help others—to look beyond personal needs and wants—and the incentive to channel that motivation into a regular and responsible program of community service.

In addition to the satisfaction that comes from such work, the Kinney Program also gives students an opportunity to sample career fields in which they might be interested or to gain valuable on-the-job training. There will be first and second term sign-ups for interested students. Always feel free to walk in the office and volunteer for a service or work project, for no appointment is necessary. Kinney provides a vital service to the Memphis Community and also to the individual desiring to help. Do consider working with the Kinney Program—not only will you be helping others a great deal, but the satisfaction and growth will benefit you substantially.

wlyx

Karen Luvaas, Director

Briggs Student Center, Third Floor

At 89.3 on the FM dial, WLYX is Rhodes' own student-operated radio station. The 3500 watt signal reaches almost all parts of Shelby County.

WLYX offers primarily jazz, classical and rock programming. On weekends, the station also plays bluegrass and folk music, and inspirational programs.

Student participation is encouraged in all aspects of programming, production, and broadcasting. Interested persons should come by the studios on the third floor of the Student Center. No experience is required or even necessary, just a desire to learn.

townies

Commuting students are just as much a part of Rhodes as the "live-ins," but you need to make an effort to keep from falling into the habit of going straight home after class. An occasional meal in the refectory or participation in some of the evening events will keep you in touch with the Rhodes community.

There are lockers available in the basement of the Student Center—check with the Dean of Students Office. Town students are assigned mailboxes also; these will often contain important on-campus announcements and notices, so check them regularly. The Student Center has large, comfortable couches and is a traditional place to gather as you are waiting for your next class.

athletics

Gymnasium (3940)

Gym Hours: Monday-Thursday	8:30 a.m.-10:00 p.m.
Friday	8:30 a.m.- 5:00 p.m.
Saturday	10:00 a.m.- 5:00 p.m.
Sunday	1:00 p.m.- 5:00 p.m.
Pool Hours: Monday-Friday	7:00 a.m.- 8:00 a.m.
	1:00 p.m.- 6:00 p.m.
Saturday	10:00 a.m.- 6:00 p.m.
Sunday	1:00 p.m.- 6:00 p.m.

Rhodes offers varsity participation for women in soccer, cross country, tennis, basketball, and volleyball. For men Rhodes offers football, baseball, basketball, soccer, tennis, golf, track, and cross country.

COACHING STAFF:

Football	Mike Clary
Women's Basketball, Tennis	Sarah Hatgas
Baseball, Assistant Football	Gordon Ellingsworth
Golf, Assistant Football	Leland Smith
Basketball	Herb Hilgeman
Assistant Football, Assistant Track	Mike Woodford

The Athletic Director, Volleyball Coach, Women's Soccer Coach, Trainer, Cross Country Coach, and Intramurals' Coach will be announced later.

These coaches serve the entire Rhodes community; you do not have to play a varsity sport or even enroll in a PE class to take advantage of their expertise.

Over two thirds of the campus participates in the intramural program. The season will open with intramural flagball, followed by basketball, volleyball, and softball. Teams can be formed by anyone; members of a commons, a dorm, a fraternity/sorority or merely a group of friends. Club sports are offered in lacrosse and field hockey.

All students can enjoy the use of Rhodes athletic facilities. In addition to the gym and regular fields, there are tennis courts, racquetball courts, an Olympic swimming pool, a cross country layout around campus, and a weight room. Check the schedules for various facilities.

For those who choose to pursue less strenuous activities, frisbee golf is also a popular pastime. Ask an upperclassman about the course layout. A sport unique to Rhodes is whiteball; just hang around the steps between the refectory and White to find out what it is all about. Camping equipment and a bicycle built for two are also available from the Student Center (assembly required).

All staff members are available to the Rhodes community to help in working out exercise schedules, weight lifting programs, health tips, and life time leisure activities.

The trainer is also available for rehabilitation of injuries, sports related or otherwise.

Because members of the staff have coaching commitments, appointments are encouraged although not necessary.

dilemma

Operated exclusively by Rhodes students and financed by private contributions, this symposium features an intellectually stimulating weekend of guest speakers and seminars. Rhodes presents Dilemma to the college and Memphis communities. The symposium will be held this winter, so watch for your chance to get involved.

international house

University and Neely Halls

Veronike Heinrich and Tom Horton, Student Coordinators

The International House is two residence halls for students who are interested in foreign languages and cultures. It consists of two separate sections, male and female, each of which houses speakers of French, Spanish, German, and Arabic. This special living arrangement was designed to provide students with an opportunity to practice their language skills with native speakers and other students, to stimulate international awareness on campus, and to assist foreign students during their years at Rhodes. Residents of the International House also sponsors weekly language tables at mealtimes where the principal language for conversation will be either French, Spanish, German, or Arabic.

greek life

About fifty percent of the campus belongs to one of the Greek organizations on campus. Rush takes place in the fall, with ample time for the prospective pledge to become acquainted with the various groups. The Greek system offers a chance for you to become acquainted with a diverse group of friends that you might otherwise not come in contact with.

Six national fraternities and four national sororities have active chapters at Rhodes. The fraternities, listed in order of their establishment here, are as follows: Pi Kappa Alpha, Alpha Tau Omega, Sigma Alpha Epsilon, Kappa Sigma, Kappa Alpha, and Sigma Nu. The sororities, similarly listed in order of establishment at Rhodes, include the following: Chi Omega, Kappa Delta, Alpha Omicron Pi, and Delta Delta Delta. These national fraternities and sororities have attractive houses on the campus, which are used for meetings and social events.

To be eligible for initiation, a pledge must have passed a minimum of nine hours at Rhodes with a grade-point average of 1.666 or better in the preceding term. Written certification by the Registrar and the Cashier that the student has met the scholarship requirements and has settled all college accounts is necessary for initiation.

The Inter-Fraternity Council for the fraternities (Sann Gossum, president) and the Panhellenic Council (Audrey Weston, president) for the sororities made up of two representatives from each of the groups, and in cooperation with the Dean of Students, are in charge of the social activities of the groups and all matters of interfraternity relations.

dining in Memphis

Just as the campus may crowd in on you at times, there comes a night when you just get to the line in the refectory and your stomach is just unable to handle the sight of Polish Sausage Sandwiches, or your parents are in town and you just don't want to call Mom and Dad at the hotel and say, "Hey, guys, how 'bout dressing up for a nice meal in the refectory?" So what we've done below is get together a fairly comprehensive listing of most of the restaurants that Rhodes students seem to frequent. For more information, just ask an upperclassman or let your fingers do the walking. Bon Appetit!

KEY:

- \$\$\$ Expensive—Take your parents there
 \$\$ Not as expensive—Good place for a nice date
 \$ It won't impress her, but you may go out again, if you're real nice
 C Marginal

YOUNG AND FUN . . .

Friday's	\$\$
Bombay Bicycle Club	\$\$\$
Ruby Tuesday's	\$\$\$
Paulette's	\$\$\$
Huey's	\$\$
Dux	\$\$\$
Mama Josie's Ice Cream Parlour	C
The Dacquiri Factory	C
Midway Cafe	\$\$
Gaslight Dinner Theatre	\$\$\$

ORIENTAL . . .

Shanghai's	\$\$\$
Formosa	\$\$\$
NamKing's Chinese Restaurant	\$\$\$
Kubla Khan's	\$\$\$
Peking Palace	\$\$
The Hong Kong	\$\$

ITALIAN . . .

Colletta's	\$\$
Grisanti's	\$\$\$
Palm Court	\$\$\$
Pizza Hut	C
Pierotti's	\$\$

MEXICAN . . .

Gonzales and Gertrude's	\$-\$-\$-\$
Panchos	C-\$-\$
Taco Bell	C
Ell Chico's	\$\$
Molly's La Casita	\$\$

VIEWS OF THE RIVER . . .

River Terrace	\$\$\$
Number One Beale Street	\$\$\$
The Pier	\$\$\$
Captain Bilbo's	\$\$\$

OTHERS . . .

Erika's (German)	\$\$
Mr. Rays	C
Dino's Southwestern Grill	C
Melo's Tavern (Greek)	\$\$

THAT FAMOUS MEMPHIS BBQ . . .

Charlie Vergo's Rendezvous	\$\$
The Public Eye	\$\$
Gridley's	C-\$-\$
Blues Alley	\$\$\$

COUNTRY STYLE . . .

The Front Porch	\$\$
Sisters	C-\$-\$
The Black Eyed Pea	\$\$-\$-\$-\$
Po' Folks	C-\$-\$

REAL NICE . . .

Justine's	\$\$\$\$
Four Flames	\$\$\$\$
The Sawmill	\$\$\$\$
Carriage House	\$\$\$\$
La Tourelle	\$\$\$\$
Chez Phillipe	\$\$\$\$
Cafe St. Clair	\$\$\$\$

MEAT AND POTATOES . . .		OPEN 24 HOURS . . .
The Loft	\$ \$ \$	Denny's
Victoria Station	\$ \$ \$	Krystal's
Flaming Hearth	\$ \$ \$	Steak 'n Egg
Fred Gang's	\$ \$ \$	SUNDAY BRUNCH . . .
Ninety-First Bomb Group	\$ \$ \$	Bombay's Bicycle Club
The Butcher Shop	\$ \$ \$	Hasting's Place
		Hunan
SEAFOOD . . .		The Loft
Captain Bilbo's	\$ \$ \$	Memories
Pappy and Jimmy's	\$ \$	Ming House Restaurant
The Lobster Feast	\$ \$	Number One Beale
The Hungry Fisherman	\$ \$	Paulette's

OTHER GREAT BREAKFAST SPOTS . . .

Danver's All-You-Can-Eat
 Ferguson's (A Memphis Tradition)
 Shoney's All-You-Can-Eat

rhodes after hours

Below is a list of the various dives, holes in the walls, etc. that Rhodes students frequent. You should try them all but be prepared, open-minded, and have an Alka-Seltzer in hand (upperclassmen will tell you where to find any of these nightspots).

- **PAT'S PIZZA** — The most famous and wonderful of all. Great cheesburgers. After four years, you'll think "Mrs. Pat" is your mom. Avoid the pizza, but play "From Graceland to the Promised Land" and it'll bring tears to your eyes.
- **THE COTTON BOLL** — Lower midtown charm. Lots of video games for those who haven't graduated to adulthood.
- **ALEX'S** — Close to school, with "Rocky Burgers" and oldies.
- **POPLAR LOUNGE** — A classic only recently expanded.
- **BROWN JUG** — Not a nightspot but will cash any Rhodes student's check so you can get to one.
- **P&H CAFE** — A mellow place for artsy types especially.
- **ANTENNA CLUB** — New wave nightspot.
- **RUBY TUESDAY'S** — Not a dive, but two-for-one drinks every night after eleven ain't bad.
- **LAST RESORT** — Any one of the 17 Krystals, 17 McDonalds, 16 Wendy's, or the 2000 Fried Chicken places in Greater Memphis.

alcohol policy

All members of the College community are responsible for making decisions about their behavior within the context of Tennessee law and the College's principles and regulations. In an attempt to make the student aware of Tennessee law concerning the use of alcoholic beverages, the following summary of the applicable law is provided. This summary is not intended to be a restatement of the law nor a summary of all of the law relating to alcoholic beverages, but it is provided to advise the student of some state statutes which may affect the student and his or her use of alcoholic beverages.

STATE STATUTES:

Under Tennessee law, it is illegal:

1. For any person to sell, furnish, or give an alcoholic beverage to any person under the age of 21 (except as provided in paragraph 2);
2. For any person under the age of 21 to purchase, receive, or possess alcoholic beverages, unless such person was born before August 1, 1965, in which event such person shall be of legal age to purchase, consume, or possess alcoholic beverages.
3. For any person to consume or open for consumption any alcoholic beverages in any establishment licensed to sell such beverages between 3:00 a.m.-7:00 a.m.
4. For any person to make a false statement to the effect that he or she is 21 years of age or older for the purpose of obtaining alcoholic beverages.
5. For any person to sell or furnish any alcoholic beverages to any person who is known to be visibly intoxicated or to any person who is known to habitually drink alcoholic beverages to excess, or to any person who is known to be a habitual user of narcotics or other habit-forming drugs.
6. For any person to operate a motor vehicle under the influence of alcoholic beverages or drugs and be found with .10 percent or more alcohol or drugs in his or her blood system.

Violators of any of the above statutes are considered to be misdemeanors for first offenders. A misdemeanor in Tennessee is punishable by a fine and/or up to 11 months and 29 days in jail. Violations of the above statutes for second or more frequent offenders may be prosecuted under the Tennessee felony statutes, which provide for much more substantial fines and jail sentences.

The College expects all students to comply with state laws relating to alcoholic beverages. The College does not condone the illegal possession, use, distribution, or sale of alcoholic beverages.

The following regulations apply to the on-campus use of alcoholic beverages by individuals, by groups, or by College organizations:

1. At no time will alcoholic beverages be served or provided to persons under the legal drinking age of the State of Tennessee.
2. The unlicensed sale in any manner of alcoholic beverages is prohibited.
3. Any individual, group, or organization wishing to serve or provide alcoholic beverages at an event is responsible for compliance with the applicable state laws and regulations.
4. Alcoholic beverages may not be used as an award or trophy for any event or program.
5. There will be no on campus parties open to the whole student body (commonly called open houses) at which alcohol beverages are served or provided.

ALCOHOL AWARENESS

The choices you make and the decisions you make say a lot about who you are and where you are going. If you decide to include alcohol in your life, it is up to you to make responsible decisions about drinking. No one but you can make these decisions.

Drinking responsibly is using alcohol in ways which harm neither the individual nor society. Responsible drinking also includes both the responsible serving of alcoholic beverages and a respect for others who choose to abstain or drink in moderation.

Factual information, both positive and negative, about the effects of alcohol and the process which leads to the disease of alcoholism may help you in your efforts to make responsible choices about drinking. Information about alcohol, alcohol abuse and alcoholism is available for you or someone you care about from the Counseling and Placement Center (located in the Briggs Student Center, Room 301). Test your knowledge on the subject. Be informed.

Approved: January 7, 1985

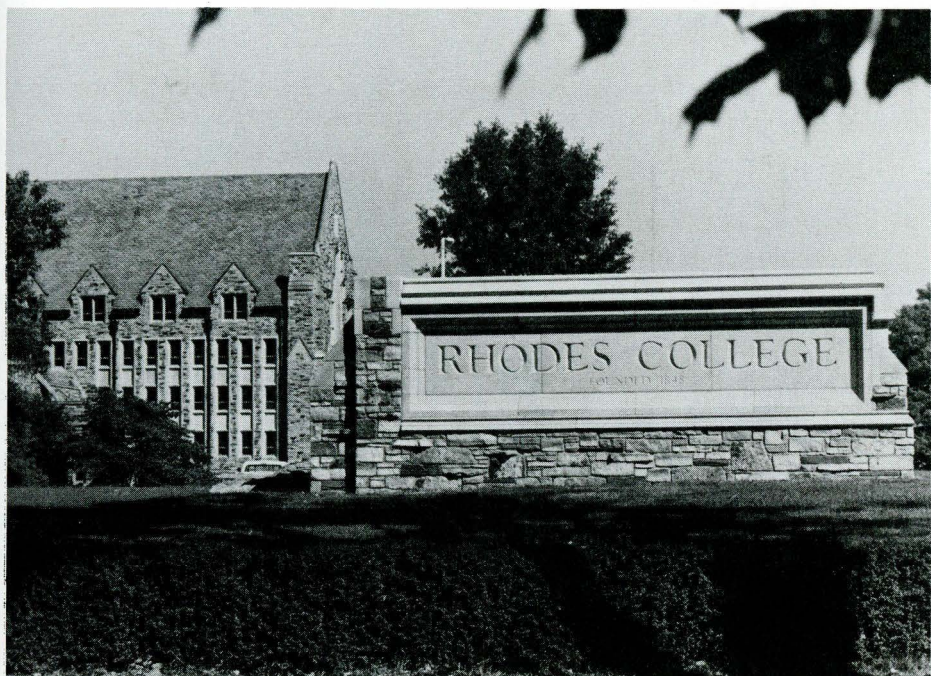
emergency numbers

Ambulance	458-3311
Crisis Intervention	726-5531
Fire	458-3311
Infirmary	726-3895
Memphis Police	528-2222
Rhodes Security	726-3880

memphis . . .

There comes a time when the campus at Rhodes College begins to feel just a little too quaint and a little too small and you just have to get off campus. We suggest:

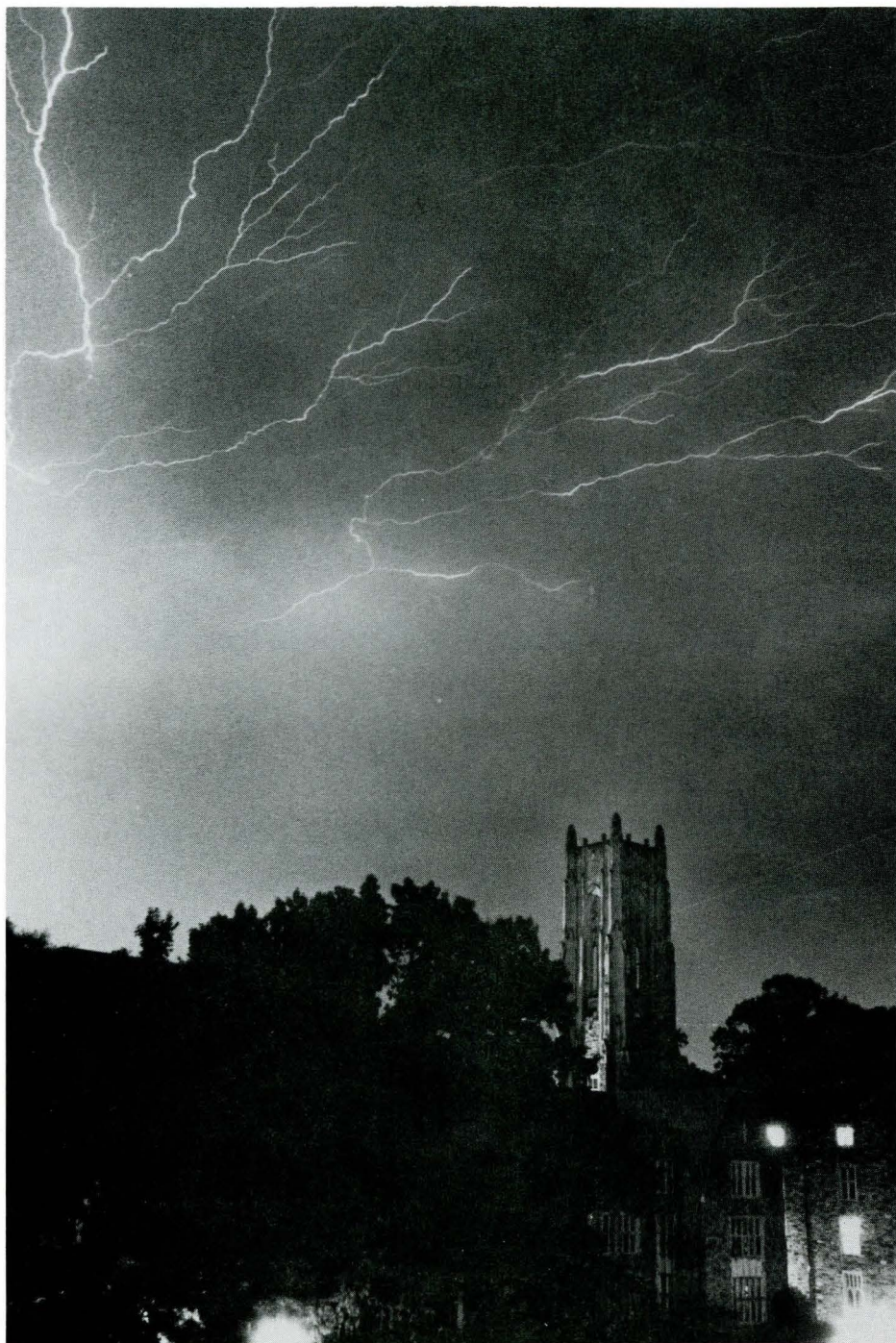
- walking through Overton Park (never alone or at night, though, unless you're able to run a mile in less than four minutes)
- go shopping in one of the various malls
- go to Overton Square and get a Cookies-and-Cream ice cream cone at Swensen's
- find a sunny spot on campus and read, talk, cry, fly a kite, or throw a frisbee (but face away from academic buildings)
- take a friend and go down to the river and watch the water roll by
- put on a loud, polyester shirt and baggy shorts, hang a camera around your neck, and go visit Graceland with all the other tourists (a real cultural experience)
- spend a rainy afternoon at the Brooks Memorial Art Gallery or the Pink Palace Museum, or Dixon Art Gallery
- happy hour, anywhere
- go to an afternoon movie (cheap)
- go to a play or musical at Theatre Memphis, Circuit Playhouse, or Playhouse on the Square
- go to a Memphis Showboats football game or a Memphis Chicks Baseball game (spring-summer)
- visit the ornamental metals museum (when you're really more than bored)
- go to a concert at Mud Island or in the Mid-South Coliseum
- visit Libertyland amusement park
- go sightseeing downtown in the Hotel Peabody's lobby, the Beale Street area, and the Mid-America Mall
- treat a friend to a horse-driven carriage ride (starting in the parking lot of the Peabody)
- and, of course, there's always the zoo across the street (as I'm sure you'll realize when the wind shifts)



a final word . . .

You are about to begin a new and exciting phase in your life. There is much to do on this campus and I have spent over thirty pages telling you about the people and places to go to get the most out of your stay at Rhodes. Ultimately, though, it is you who will have to choose how good a time you will have and how much you will grow while you are here. You may not be sure of what you want from life yet, but just remember that you are not alone. It is not hard to disappear into the crowd; and, you can probably get by being just a face attached to an I.D. number. Remember, however, there will come a day when you reflect back on your life and ask yourself, "what have I done with my life?" So, **GET INVOLVED!** Find the activity or organization that interests you and seize the challenge. You may not win all the awards on Awards Day and your picture may not hang forever in the Hall of Fame, but you will have grown stronger, more intelligent, and happier.

Steve Harmon



Midnight—strange mystic hour—when the veil between the frail present and the eternal future grows thin.

—Stowe