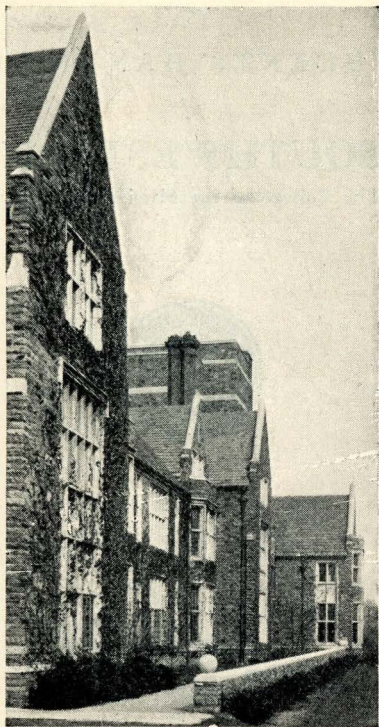




The
STUDENTS' HANDBOOK
of
SOUTHWESTERN
The College of the Mississippi Valley



Published by
THE SOUTHWESTERN
CHRISTIAN UNION



DEDICATION

To you who for the first time are about to enter the gates of college life, you who will become our associates and friends, and upon whose shoulders will ultimately fall the responsibility of carrying on the work and traditions of SOUTHWESTERN, the Southwestern Christian Union dedicates this Handbook for the session of 1939-40.

COLLEGE CALENDAR

SESSION 1939-40

FIRST SEMESTER

September 11, Monday, 10:00 a.m.—Meeting of the Faculty.

September 11-12, Monday and Tuesday—*Examinations.

September 13-14, Wednesday and Thursday—Freshman Orientation.

September 15, Friday—General Registration.

September 16, Saturday, 8:30 a.m.—Opening Convocation and Assembly of All Classes.

November 11, Saturday—Armistice Day Service.

November 30, Thursday—Thanksgiving, a Holiday.

December 19, Tuesday, 5:00 p.m.—Beginning of Christmas Recess.

January 3, Wednesday, 8:30 a.m.—End of Christmas Recess.

January 25 to February 2—Semester Examinations.

*These examinations are for those new students whose entrance credits are irregular, and for former students who are subject to reexamination.

SECOND SEMESTER

February 3, Saturday—Inter-semester Holiday.

February 5, Monday—Registration.

February 6, Tuesday, 8:30 a.m.—Chapel and Classes Resumed.

February 25, Sunday—Day of Prayer for Colleges.

March 20, Wednesday, 5:00 p.m.—Beginning of Easter Holidays.

March 26, Tuesday, 8:30 a.m.—End of Easter Holidays.

March 27-28, Wednesday and Thursday—Reexaminations.

May 30 to June 7—Semester Examinations.

June 9, Sunday, 11:00 a.m.—Baccalaureate Sermon.

June 10, Monday—Class Day Exercises, Alumni Day, Alumni Dinner.

June 11, Tuesday, 10:00 a.m.—Graduation Ceremony.

To the Class of 1943:

On behalf of the college, as well as on my own account, we cordially welcome you to SOUTHWESTERN, to share in our privileges and responsibilities. You have come from many homes and from many schools. With different backgrounds, with varying abilities, and with unequal, but, we hope, adequate preparation, you are united in your choice of a college, which is one of life's important choices. We have reason to believe that you are of sound moral character, and we trust that you are motivated by a serious purpose. If these things are true, and if you will put yourself wholeheartedly into your work, we believe that the long future will vindicate the wisdom of your choice. There is much that you can gain and much that you can give, but everything depends upon your own point of view and attitude and spirit of cooperation.



Phar. E. Diehl

To the Class of 1943:

SOUTHWESTERN welcomes you to its campus and to what we of the faculty hope may be the beginning of a friendship and love for the institution that will endure through the years to come. All of the facilities of SOUTHWESTERN, its grounds, its buildings, its library, and its athletic fields are here for your benefit and are at your disposal. The wonderful experience and privilege of a college education are to be yours. We trust that you come to us ready to take advantage of all that the college has to offer and of all the help that we are eager to give you. We want you to learn much, to play intelligently, to make many loyal friends; and to be happy here. But above all, we want you to become finer and better men and women than you were when you came to us. To these ends we are prepared to assist you, and we ask your cooperation.



R. P. Struckler

SOUTHWESTERN'S "ALMA MATER"

Dear Alma Mater, kind the fate
That links our lives with Thee,
For God's own power that made Thee great
Is the truth that makes us free;
Thy torch has touched our hearts with flame,
Our yearning souls refined;
Through Thee we learn the higher aim,
And train the truer mind.

Thy stalwart towers of solid stone,
Thy vaulted arches strong,
Inspire our loyal hearts each one
To fight against the wrong;
Our lives reflect the beauty of
Thy stately cloister'd halls,
And characters grow genuine
That dwell within Thy walls.

O Leader to the larger light,
SOUTHWESTERN, 'neath Thy wings
Thy sons in rev'rent love unite,
And each his tribute brings;
And dreams such dreams as old men dream,
And visions young men see,
Keep lighted in our hearts the flame
Once kindled there of Thee.

FACULTY

(Arranged in Order of Appointment)

Charles Edward Diehl, A.M., D.D., LL.D.
A.B., Johns Hopkins University; Graduate of
Princeton Theological Seminary; A.M., Prince-
ton University.

President

Charles Louis Townsend, A.M., Ph.D.
B.A., McGill University; A.M. and Ph.D.,
Harvard University.

Professor of Modern Languages

Margaret Huxtable Townsend, M.A.
B.A. and M.A., McGill University.

Associate Professor of Sociology

Waller Raymond Cooper, A.M., LL.B.
A.B., Washington and Lee University; A.M.
Harvard University; LL.B., University of Ala-
bama; B.A. (Juris), Oxford University.

Professor of History

William R. Atkinson, A.M., Ph.D.
B.S., George Peabody College; A.M., Colum-
bia University; Ph.D., George Peabody College.

Professor of Psychology and Education

Marion Leigh MacQueen, A.M., Ph.D.
A.B., SOUTHWESTERN; A.M., University of
Wisconsin; Ph.D., University of Chicago.

Professor of Mathematics

Samuel Holt Monk, A.M., Ph.D.

A.B., SOUTHWESTERN; A.M. and Ph.D.,
Princeton University.

Professor of English

Robert P. Strickler, Ph.D.

A.B., West Virginia University; 1907-10, Ox-
ford University; Ph.D., Johns Hopkins Uni-
versity.

Professor of Greek

William Orpheus Shewmaker, Ph.D., D.D.

A.B., Centre College; Graduate of Princeton
Theological Seminary; Ph.D., Hartford Theo-
logical Seminary.

Professor of Bible

Robert W. Hartley, Ph.D.

A.B., University of Utah; B.A. (Mathematics),
Oxford University; Ph.D., University of Penn-
sylvania.

Professor of Mathematics

Martin W. Storn, A.M., Ph.D.

A.B., Wartburg College; A.M., University of
Washington; Ph.D., University of Illinois.

Professor of Romance Languages

Alexander P. Kelso, B.D., M.A., D.D.

A.B., Washington and Jefferson College; B.D.,
Western Theological Seminary; B.Sc. (Ethics)
and M.A. (Theology), Oxford University.

Professor of Philosophy and Christian Ethics

John H. Davis, M.A., Ph.D.

A.B., University of Kentucky; B.A. (Modern
History) and M.A., Oxford University; Ph.D.,
University of Chicago.

Professor of History

Peyton Nalle Rhodes, A.M., Ph.D.

A.B., A.M., and Ph.D., University of Vir-
ginia.

Professor of Physics

A. Theodore Johnson, A.M., Ph.D.

A.B., Westminster College; A.M., University
of Virginia; Ph.D., University of North Caro-
lina.

Professor of English

Henry J. Bassett, Ph.D.

A.B., Maryville College; A.B., Princeton Uni-
versity; Ph.D., University of Michigan.

Professor of Latin

Robert S. Pond, A.M., Ph.D.

A.B., Washburn College; A.M., Marietta Col-
lege; Ph.D., University of Kansas.

Associate Professor of Mathematics

Andrey S. McIlwaine, A.M., Ph.D.

A.B., SOUTHWESTERN; A.M. and Ph.D., Uni-
versity of Chicago.

Associate Professor of English

Ralph C. Hon, A.M., Ph.D.

A.B., University of Illinois; A.M., Harvard
University; Ph.D., University of North Caro-
lina.

*Professor of Economics and Business Ad-
ministration*

Clinton L. Baker, M.S., Ph.D.

B.S., and M.S., Emory University; Ph.D.,
Columbia University.

Associate Professor of Biology

Charles Gordon Siefkin, B.A.
A.B., University of Iowa; B.A., Oxford University.

*Assistant Professor of Political Science
and Public Speaking*

Felix Bayard Gear, B.D., Th.M., D.D.
A.B., Davis and Elkins College; B.D., Union Theological Seminary; Th.M., Princeton Theological Seminary.

*Professor of Bible
The Albert Bruce Curry Chair*

Jacob R. Meadow, A.M., Ph.D.
A.B., Arkansas College; A.M., University of Arkansas; Ph.D., Johns Hopkins University.

Professor of Chemistry

J. Henry Davis, A.M., Ph.D.
B.S. and A.M., Davidson College; Ph.D., University of Chicago.

Professor of Biology

Ogden Baine, M.S., Ph.D.
B.S., SOUTHWESTERN; M.S. and Ph.D., New York University.

Assistant Professor of Chemistry

Burnet C. Tuthill, A.M., M.Mus.
A.B. and A.M., Columbia University; M.Mus., College of Music of Cincinnati.

Director of Music

Clarence Pendleton Lee, A.M.
A.B. and A.M., Washington and Lee University; B.A., Oxford University.

*Assistant Professor of Public Speaking and
Director of Dramatics*

W. Ross Junkin, A.M.
A.B., University of Toronto; A.M., Cornell University.

Associate Professor of Economics and Business Administration

David M. Amacker, M.A.
A.B., Princeton University; B.A. and M.A., Oxford University.

Professor of Political Science

M. Edward Porter, A.M., Ph.D.
A.B., Washington and Lee University; A.M. and Ph.D., Princeton University.

Assistant Professor of Modern Languages

Alexander Boeker, B.A.
Referendar in Law, University of Munich; B.A., Oxford University.

Assistant Professor of Economics

John Q. Wolf, Jr., A.M.
A.B., Arkansas College; A.M., Vanderbilt University.

Assistant Professor of English

Robert T. L. Liston, Th.M., Ph.D.
A.B., Davidson College; B.D. and Th.M., Union Theological Seminary (Virginia); Ph.D., University of Edinburgh.

Associate Professor of Bible

Wolfgang Paulsen, Ph.D.
Attended Universities of Tuebingen, Bonn, Berlin and Leipzig; Ph.D., University of Berne.

Assistant Professor of Modern Languages

Arno Schirokauer, Ph.D.
Attended Universities of Berlin and Halle; Ph.D., University of Munich.

Assistant Professor of German

Edwin Kubale, A.B.

A.B., Centre College.

Director of Athletics and Coach

Harold W. High, A.B.

A.B., SOUTHWESTERN.

Assistant Director and Business Manager of Athletics

Robert B. Waddle, A.B.

A.B., Centre College.

Assistant Coach

Murel Nemecek, A.B.

A.B., Centre College.

Director of Physical Education for Men

Louise Stratmann, A.B.

A.B., SOUTHWESTERN.

Director of Physical Education for Women

OFFICERS of ADMINISTRATION AND ASSISTANTS

Charles Edward Diehl, A.M., LL.D. *President*

A. Theodore Johnson, Ph.D. *Dean*

W. Raymond Cooper, A.M., LL.B. *Dean of Men*

Margaret H. Townsend, M.A. *Dean of Women*

Robert P. Strickler, Ph.D. *Dean of Freshmen*

Ralph C. Hon, Ph.D. *Director of Extension Work*

Annie Beth Gary, A.M. *Clerk of the Faculty and Registrar*

Mrs. James M. Stewart, A.B. *Assistant Registrar*

C. L. Springfield *Bursar*

Mary Marsh, A.B. in L.S. *Librarian*

Cornelia Murfree, B.S. in L.S. *Assistant Librarian*

Elizabeth Peeler, A.M., A.B. in L.S. *Assistant Librarian*

Erma Reese *Secretary to the President*

John A. Rollow, B.S.	<i>Supervisor of Property</i>
Mary M. Pond, A.B.	<i>Alumni Secretary</i>
Moore Moore, M.D.	<i>College Physician</i>
John R. Drake, M.D.	<i>Associate College Physician</i>
Mrs. M. L. Hill	<i>House Manager</i>
Mrs. I. A. Rutland	<i>Resident Head of Evergreen Hall</i>
Mrs. Ruth M. Holloway	<i>Manager of the Book Store</i>
Warren D. Howell	<i>Bookkeeper</i>
Ireys Martin	<i>Cashier</i>
Mrs. A. M. Bright	<i>Assistant to the Bursar</i>
Mrs. Hardy Greenhill	<i>Secretary to the Athletic Department</i>

SOUTHWESTERN TRADITIONS

SOUTHWESTERN is preeminently an institution of Christian ideals, and the spirit of honesty and friendliness is ever present in the classroom, on the athletic field, and in all branches of college activities. In order that these ideals may be maintained, SOUTHWESTERN selects only those students who are of a high moral and intellectual type.

There is an unusually warm understanding between the students and the professors. The classes are small, and individual attention to the students is thereby made possible. The members of the faculty are looked upon as friends and advisers of the intimate type, and the benefits thereby reaped are out of all proportion to anything attained in larger institutions.

All students are regarded and treated as gentlemen, unless and until they prove themselves otherwise. The motto of Winchester College is "Manners Makyth Man." The importance of good manners, the art of putting our associates at their ease, cannot be exaggerated. This virtue is within reach of all, for in essence it depends upon kindness of disposition and not on a book of etiquette.

Not only does SOUTHWESTERN require that the students uphold the Christian ideal, but that they put themselves heartily into their work. These two requirements are fundamental, and must be met by all students.

The spirit of honesty pervades SOUTHWESTERN in all its activities, and so general has been this attitude among the students that the Honor System has come to be an essential aspect of the institution's life.

The spirit of democracy is deeply ingrained in the fabric of the institution. Snobbishness of any form is out of place.

Freshmen are expected to identify themselves with all activities of the college and to enter whole-heartedly into the spirit of the institution.

Students are proud of the buildings, which are unsurpassed by any, and they show their pride by endeavoring at all times to preserve and protect the college property, just as they do their own homes.

Squandering of time is strongly discounted, and all students are earnestly advised to use their time in the manner which will be most helpful for intellectual, athletic, social and moral development.

Those who enter into the spirit of SOUTHWESTERN and uphold the traditions will have a happy experience. Those students will speedily become a part of the institution, and find themselves in harmony with the high purposes which lie behind all our activities.

EDUCATIONAL IDEALS

The following extract from the Minutes of the Board of Directors, which reveals the educational ideals—ideals heartily and unanimously approved by the Board of Directors at their meeting on February 8, 1922, and reaffirmed by the Board at the annual meeting on February 4, 1931—will make clear the policy of the institution.

President Diehl addressed the Board, pointing out the necessity of having definite educational ideals and of a continuity in the directorate for the carrying out of adopted plans. Assuming that there could be no disagreement in this Board concerning the spiritual ideals of the institution, he outlined for the consideration and disposition by the Board a definite program of educational ideals, which is as follows:

“While every proper economy will be observed in the planning for and the administration of SOUTHWESTERN, the fundamental principle upon which all our planning shall proceed is the welfare, and especially the moral welfare of the students, for whom the institution exists, even though the application of this principle prove to be more costly in dollars and cents.

“Inasmuch as the English system of higher education is, in our judgment, incomparably better for the moral welfare of the student than the Continental system, we propose as nearly as we can to follow the English system, with such modification and the adaptations as seem wise.

"We believe that from 150 to 200 students is about the maximum number that should be grouped together as a unit, that such a group is about the ideal size for the helpful development of a common life, and, we believe, further, that this number should be broken up into small groups for more intimate fellowship.

"We favor, therefore, a dormitory arrangement providing for a unit quadrangle for 175 men, with a common dining room for this group.

"We favor, also, the plan of dividing this quadrangle into five separate groups or halls, each to provide for 34 men and an instructor, and each of these five halls to have separate living room equipped for each group of 34 students, thus preserving the family idea.

"We, therefore, favor the policy of having fraternity houses which shall be merely club houses, and not dormitories or residential houses.

"We believe that we can best serve the church and the nation by adequately providing for and equipping a comparatively few select men, in accordance with our means, rather than by accepting all who desire to come, and then doing the best we can for them with the limited means at our disposal.

"We, therefore, favor the policy of selecting carefully all students, this selection to be made on the basis of moral character, intellectual fitness and preparation, qualities of leadership and potentialities of usefulness to church and state; and to limit the number of

students accepted by our ability to give them the best advantages, such advantages as they have a right to expect from the standard college of a Church which enthrones honesty and which worships the God of righteousness.

"We believe that there should be, in order to give students the best advantages, an income producing endowment of about \$5,000 per student, and it will be our policy to endeavor to measure our student capacity by the income producing endowment. As our endowment increases and we can provide properly for others, we shall accept more students, all of whom, however, are to be carefully selected.

"We believe, further, that it is for the best interests of the work to have a comparatively small faculty of well-paid full professors rather than to have a larger faculty composed mainly of assistant professors and instructors who are serving on a lower salary scale."

GENERAL INFORMATION

New students who desire it will be met at the bus and railway stations by members of the Southwestern Christian Union.

Any one desiring to reach the college by street railway bus from either of the principal railway stations, may take the Glenview-Faxon bus and ride to the end of the line, which is at the edge of the college campus. The taxicab fare from the stations is approximately eighty cents. Since no additional charge is made for the extra passengers, as many as five people may ride out together for this one fare.

The taxicab companies, as well as the Patterson Transfer Company, are equipped for delivering trunks to the college, and trunk checks entrusted to them will receive prompt and careful attention. The rates of the Yellow Cab Company, the Jolly Cab Company, and the Patterson Transfer Company are 75 cents per trunk and 25 cents for each additional piece of baggage.

Men students should plan to arrive at the college between 8:30 a.m. and 5:00 p.m. and should report to the business office in Palmer Hall for the assignment of rooms. Mr. John A. Rollow, Superintendent of Buildings and Grounds, will furnish keys for the room. A deposit of 50 cents is required for each key.

The women students should go to Evergreen Hall, which is located on the corner of

Snowden Avenue and University Place. Mrs. I. A. Rutland, the Resident Head of Evergreen Hall, will assign the rooms.

The business office in Palmer Hall will be glad to furnish any further information the student may desire.

THE FIRST FEW DAYS AT SOUTHWESTERN

The first few days of the session, prior to the Opening Convocation, are set aside for the purpose of inducting the freshmen and other new students into college life in such a way that the best possible adjustment may result. Below is given a brief outline of the Orientation Program for September, 1939:

SEPTEMBER 13, 1939

- 8:30 a.m.—Opening Exercises in Hardie Auditorium.
- 9:30 a.m.—Classification Tests and Measurements in Hardie Auditorium.
- 1:00 p.m.—Luncheon—All new students are guests of the college.
- 2:00 p.m.—Conferences, Physical Examinations, and photographs.

SEPTEMBER 14, 1939

- 9:00 a.m.—11:00 a.m.—Classification of Men Students.
- 11:00 a.m.—1:00 p.m.—Classification of Women Students.

- 9:30 a.m.- 1:00 p.m.—Physical Examinations for Women.
 1:00 p.m.—Luncheon. New students are guests of the college.
 2:00 p.m.- 4:00 p.m.—Intramural Sports Program.

SEPTEMBER 15, 1939

- 9:00 a.m.-4:00 p.m.—General Registration of Former Students.
 8:00 p.m.—Palmer Hall Terrace—Faculty Reception.

SEPTEMBER 16, 1939

- 8:30 a.m.—Hardie Auditorium — Opening Convocation; Assembly of all classes.

LOCATION

The campus of SOUTHWESTERN is a beautiful tract of one hundred acres, fronting for half a mile along North Parkway, just opposite Overton Park. It is located in northeast Memphis, just inside the city limits.

BUILDINGS

Palmer Hall is the administration building, in which the college offices are located. It contains also eighteen classrooms and Hardie Auditorium, which is located on the second floor. The library occupies the third floor.

The science building contains the most modern and complete equipment to be found anywhere in the South.

The Hugh M. Neely Hall, which is the dining hall, is under the capable direction of Mrs. M. L. Hill.

There is a Field House which contains a basketball court and gymnasium. It is open at all times during the day for the use both of the gymnasium classes and the individual students.

DORMITORIES

There are two dormitories, Robb and Calvin Halls, located on the campus. Stewart and Evergreen Halls are just across from the campus on University Place.

LIBRARY

The college library is on the third floor of Palmer Hall. It contains more than 44,000 volumes in addition to unbound pamphlets and magazines, and provides excellent material for parallel reading and other supplementary work which form an integral and necessary part of the various courses in every department of instruction.

A recent gift of ten thousand dollars from the Carnegie Corporation and one of four thousand dollars from the General Education Board, both grants being used for the purchase of books, greatly aided in enriching the library.

In order to make the widest possible use of the library for the entire student body and faculty, it is necessary to have and to enforce certain regulations. Every student is expected to familiarize himself with the rules governing the library, a copy of which he will find posted at the entrance to the reading room.

POST OFFICE, BOOK AND SUPPLY STORE

The combined post office, book and supply store is located in the basement of Hugh M. Neely Hall and is under the management of Mrs. Ruth Holloway. Text-books, classroom supplies and all needs of students are supplied in the store.

MAIL

All mail should be addressed to Memphis, Tennessee, in care of SOUTHWESTERN. Deliveries are made regularly twice a day to the college post office, the letters then being posted in the various boxes of the students. Each student is required to rent a box. Rental charges are fifty cents a year.

LAUNDRY AND PRESSING

The college has arrangements with one of the best laundries and pressing establishments in the city which makes such service conveniently available.

BULLETIN BOARDS

Notices will be posted by professors and others on the official bulletin board at the entrance to Hardie Auditorium. Students are held responsible for a knowledge of all announcements placed on this bulletin board. There is another bulletin board between the west entrance of Palmer Hall and the south entrance of Science Hall where the student announcements may be placed. Keys to this bulletin board are kept in the Business Office.

GRADING SYSTEM

The grades at SOUTHWESTERN are A, B, C, D, X, E and F. A is exceptionally good, B is good, C is average, D is barely passing, and F means failure. X means incomplete work. E means that another examination may be taken. If a student fails in more than half of his courses the first report period, he is put on probation, and unless he redeems himself the next report period, he is asked not to come back to SOUTHWESTERN after Christmas.

CHURCHES

The students are expected to attend regularly the morning service of that church in town to which they belong, or which they elect to attend, but they are always welcomed and made to feel at home at all services of the various churches. SOUTHWESTERN students are especially invited to the Sunday morning Bible Classes and the Young People's Societies. A list of the various churches will be found in any of the Saturday papers.

A report of the church attendance of each student is taken regularly at each report period. In the matter of making this report, students are placed entirely upon their honor.

Faculty members will be glad to talk with new students in regard to the selection of a church home.

Memphis has a large number of churches. Those listed below are a few which are in the vicinity of SOUTHWESTERN.

BAPTIST

Bellevue Baptist Church, Bellevue Blvd. and Court Avenue—Rev. Robert G. Lee, D.D., pastor.

McLean Boulevard Baptist Church, 819 N. McLean Blvd.—Rev. David A. Ellis, pastor.

Union Avenue Baptist Church, Union Avenue and Summit—Rev. H. P. Hurt, D.D., pastor.

CATHOLIC

Blessed Sacrament Roman Catholic Church, 2550 Hale Avenue—Father Edward P. Desmond.

Sacred Heart Roman Catholic Church, 1336 Jefferson Avenue—Father Louis J. Kemp-hues.

CHRISTIAN

East End Christian Church, Peabody Avenue and McLean Blvd.—Rev. J. J. Walker, pastor.

Merton Avenue Christian Church, 2516 Princeton Avenue—Rev. Vernon Jacobs, pastor.

Union Avenue Church of Christ, 1912 Union Avenue—Rev. A. Hugh Clark, D.D., pastor.

EPISCOPAL

St. Luke's Episcopal Church, 1720 Peabody Avenue—Rev. Chas. A. Hale, D.D., rector.

HEBREW

Congregation Children of Israel, Poplar Blvd. and N. Montgomery—Rev. Harry W. Ettelson, Ph.D., rabbi.

LUTHERAN

First United Lutheran Church, 1548 Jackson Avenue—Rev. V. D. Derrick, D.D., pastor.

METHODIST

Madison Heights M. E. Church, Monroe Avenue and Claybrook—Rev. James D. Jenkins, D.D., pastor.

Springdale Methodist Church, 751 N. Trezevant—Rev. E. W. Maxedon, pastor.

Trinity Methodist Church, 447 N. Evergreen—Rev. G. C. Fain, D.D., pastor.

Union Avenue Methodist Church, 2117 Union Avenue—Rev. R. A. Clark, D.D., pastor.

PRESBYTERIAN, NORTH

Lindsay Memorial Presbyterian Church, Tutwiler Avenue and Dickinson—Rev. Josiah Sibley, D.D., pastor.

PRESBYTERIAN, SOUTH

Evergreen Presbyterian Church, 1663 Autumn Avenue—Rev. W. J. Millard, D.D., pastor.

Idlewild Presbyterian Church, 1750 Union Avenue—Rev. T. K. Young, D.D., pastor.

Parkview Presbyterian Church, Faxon Avenue and Hollywood—Rev. A. T. Lindsay, D.D., pastor.

COLLEGE REGULATIONS

It is the student's responsibility to read the catalogue and other official announcements, as well as to inform himself about the requirements and the regulations of the college including his credits, his absence record, and other such matters. The following regulations given in the catalogue have been brought into one place for the convenience of new students:

ATTENDANCE

Every student is expected to be present at the opening exercises in September, to be faithful in the performance of college duties, and to attend church service every Sunday morning. Prompt return after holidays is absolutely essential. Regular chapel and class attendance, including attendance at physical education classes, is obligatory.

PERMISSION FOR ABSENCE

Students living in the college dormitories must obtain permission in advance from the Dean for all absences which necessitate missing any college duties. Students whose homes are in Memphis should similarly notify the Dean in advance of their proposed absence and arrange to make up their work. If sickness or some other emergency makes it impossible for a student to secure permission for absence beforehand, he should report his absence and its cause to the Dean immediately upon his return. Women students residing in Evergreen Hall will observe the

additional regulations concerning absence from the campus which are in effect there.

ABSENCES FROM CHAPEL

On the two days before and the two days after holidays, all absences receive a double penalty. When the total of chapel absences reaches twenty, one hour of additional credit for graduation will be required, and another hour for each additional fifteen. In the case of students who transfer to other colleges, these hours will be deducted from their total credits.

Exceptions to the rule for chapel absences will be made in cases of extra-curricular activities when the student officially represents the college, in cases of prolonged absences caused by illness or other misfortune, and, at the discretion of the Dean, in cases of unusual circumstances.

ABSENCES WHEN REPRESENTING THE COLLEGE

The proper officers of all student organizations, including the athletic teams, must submit to the Dean lists of students who go as official representatives of the college on trips out of the city. All absences incurred by students representing the college in any recognized student activity are to be excused by the Dean. Lists of such absentees will be sent to each member of the faculty concerned.

ABSENCES FROM CLASS OTHER THAN THOSE PROVIDED FOR ABOVE

Three absences per semester in each course are permitted without penalty, to take care

of casual illness, and other causes. Protracted absences due to illness may be excused by the Dean. Professors will, at their discretion, assign work to be made up. Absences in excess of three, and not exceeding six, will be penalized by lowering the student's semester grade one letter. This penalty will be applied by the Registrar. For each group of three or less absences in each course in addition to the six absences already provided for, the Registrar will deduct one semester hour from the total credits earned. Absence from classes on the two days before and the two days after holidays will count as double.

The faculty will report *all* absences each week to the Registrar.

A student who is persistently absent from any class, or who discontinues a course without permission of the Dean, is automatically suspended from the college. During the period of suspension approximately one semester hour per week is deducted from the total credit earned by the student during the semester. This regulation applies to all class courses, and to physical education. Four consecutive unexcused absences from physical education will be interpreted as dropping the course without permission, and the penalty of suspension will be applied. After the first report period of each semester, a student who drops a course in which he is failing incurs a mark of failure for the semester in that course.

CHANGE OF COURSE

If a student desires to make a change in his course of study, he should apply to the Dean for a card which is to be signed by the instructors of the classes concerned. Until this card has been returned to the Dean and his signature secured, the student is not excused from attendance upon the course he wishes to discontinue. For a change of course during the first week of the semester, no fee is charged. For each change in classification at any other time, the student is required to pay a fee of \$2.50 before the application will be granted.

In cases where the change of course requested involves any irregularity in classification, the student is required to present a written petition, countersigned by his faculty adviser, to the chairman of the Classification Committee.

No course entered after the expiration of the time allowed for change of course without fee shall count toward the number of hours of credit which a student must obtain to be eligible for initiation into a fraternity or sorority.

COURSE RESTRICTIONS

All regular students must take one of the required courses of study which lead to a degree. Each student is required to register in five courses, exclusive of physical education and a sophomore tutorial course. This requirement is exclusive also of laboratory work and such parallel work as is assigned in the

various courses. Exceptions to this regulation can be considered only upon a written petition to the Chairman of the Classification Committee.

Where exceptional circumstances prevail, a student may be granted permission to undertake less than five courses.

A student who is working to earn part of his expenses may be limited by the faculty to less than fifteen hours of class work a week.

Not more than two courses taken simultaneously in one subject or under the same instructor may count toward a degree.

No student may classify in first-year Greek unless he has had two years of a foreign language in high school or one year in college.

No two modern foreign languages may be begun at the same time.

No freshman who is a candidate for the degree of Bachelor of Arts may take a science course without the permission of the instructor of the course desired, and no freshman enrolled as a candidate for the degree of Bachelor of Science may elect Biology 1 and 2 without the permission of the instructor of the course.

EXCHANGE OF ROOMS

No exchange of rooms is allowed except with the permission of the Bursar, and no subletting of rooms is allowed at any time.

Students desiring to change quarters must, therefore, report to his office and secure permission to do so before such a change is made. Failure to comply with this regulation is penalized by a fine of five dollars.

EXCLUSION FROM COLLEGE

The college reserves the right to exclude at any time students whose conduct or academic standing it regards as undesirable, and without assigning any further reason therefor; in such cases the fees will not be refunded, in whole or in part, and neither the college nor any of its officers shall be under any liability for such exclusion.

NEW ORGANIZATIONS

Students desiring to form any new organization must apply in writing for permission to the Committee on Administration, and must state clearly the aims and the membership of the proposed group. Any local group wishing to become affiliated with a national organization must make similar application. In order to be recognized as college organizations, all groups, whatever their purpose may be, must have the official sanction of this committee.

PAYMENT OF BILLS

No student is enrolled for a shorter period than an entire semester.

All charges for the semester are payable in advance upon matriculation.

No student will be certified for initiation into a fraternity or sorority, or receive honorable dismissal, or obtain a transcript of credit, or be permitted to graduate, until he has paid all of his college bills.

PHYSICAL EXAMINATION

Upon entering the college, every student is required to undergo a physical examination. The college physicians and the Department of Physical Education attend to this requirement. The results of this examination are recorded on duplicate blanks, one of which is retained by the physician and the other is filed in the college office for reference. Physical defects which demand special attention are reported to the parents, and in the light of these examinations, corrective exercises are prescribed.

ROOM AND BOARD

All students who are not residents of Memphis or its immediate vicinity are required to live in one of the college dormitories and to board at the college dining hall.

Meals are served promptly in accordance with the following schedule: breakfast from 7:40 a.m. to 8:00 a.m., luncheon at 1:05 p.m., dinner at 6:00 p.m.

SPECIAL STUDENTS

Special students are not eligible for extra-curricular activities, including fraternities. In the annual register of students, each special

student is indicated as such, and not as a candidate for a degree. (See catalogue, page 29.)

STUDENT AGREEMENTS

No agreement of students with individuals or organizations, such as students or officers of another institution, or business concerns, will be recognized as binding upon the college unless and until approved by the Committee on Administration. This provision does not apply to those matters concerning the publications which are properly safeguarded by the Publications Board.

STUDENT COMMUNICATIONS

All communications or petitions from students or student organizations shall be in writing, and shall be addressed to the proper official or to the chairman of the faculty committee concerned.

STUDENT MARRIAGES

Any student who secretly marries is indefinitely suspended as soon as the fact is known. Subsequent announcement of the marriage will not alter this penalty. Reinstatement may be granted only by the Committee on Administration.

WITHDRAWAL AND DISMISSAL

No students shall withdraw from the college in the course of any semester before consulting the President. The penalty incurred

by the omission of this courtesy is indefinite suspension. A student will be considered in attendance until formal notice of withdrawal is filed in writing.

The college does not conceive its functions to include the problem of disciplining students who are not in sympathy with the ideals and spirit of the institution. The conduct of a responsible citizen and Christian gentleman is expected from all students. Any student who becomes antagonistic to the spirit and methods of the college will be dismissed whenever the general welfare demands such a course.

DEGREES OFFERED

The degrees of Bachelor of Arts and Bachelor of Science are offered at SOUTHWESTERN. To obtain the one or the other a student must have attended a recognized college for at least eight semesters, or the equivalent in weeks, including four semesters at SOUTHWESTERN; he must have obtained credit for not less than 124 semester hours of standard college work; and he must have an average grade of at least C in all courses included in his major subject.

Three types of the A.B. degree and of the B.S. degree are offered:

- (1) The A.B. degree with honors.
The B.S. degree with honors.
- (2) The A.B. degree with distinction.
The B.S. degree with distinction.
- (3) The A.B. degree.
The B.S. degree.

Special work is required to obtain either the degree with honors or the degree with distinction. The requirements for the degree with honors will be found on page 51 of the catalogue, those for the degree with distinction are stated by each department under "Courses of Instruction," along with the description of its courses.

In general the degree with honors requires a tutorial course in the junior year and honors work in a restricted field during the senior year. The degree with distinction requires a senior tutorial course, and a departmental examination at the end of the senior year.

TUTORIAL COURSES

The tutorial courses, inaugurated at SOUTHWESTERN in September, 1931, have attracted widespread interest and commendation in the educational world. As early as November, 1931, the Carnegie Corporation, of New York, voted to SOUTHWESTERN a substantial grant to assist in defraying the heavy expenses—of additions to the teaching force and to the library equipment—made necessary by the adoption of the plan.

The tutorial courses, an adaptation to American conditions of the best feature of Old World education as carried on at Oxford and Cambridge, serve to stimulate the student by providing him with opportunity for work along the line of his own individual interest, and at a rate of progress adapted to his abilities. Their purpose is to stimulate him by freeing him from the restraints and constraints imposed by group instruction, and to place him in man to man and mind to mind contacts with his tutor in individual conferences.

In his sophomore year the student devotes three hours a week to conference and private reading, for which work he receives one credit each semester. This reading is arranged so as to broaden the student's interest, and to prepare him for the more intensive tutorial courses of the junior and senior years. As the sophomore tutorial courses are all one-semester courses, the student during this year

comes into intimate contact with two advisers and gains some acquaintance with two entirely distinct fields of study.

In the junior and senior years the tutorial course attains its full scope, nine hours a week being spent on conference and readings, and three hours' credit being given in each semester. In these years the course lasts throughout the entire year, and is of a more advanced nature than the sophomore course.

The student may use his tutorial courses for intensive work in his major subject, or he may use them to broaden his intellectual horizon by reading in fields with which he has no previous acquaintance. If he cannot find his desired topic of study in the extensive list of courses offered, he has the privilege of petitioning the Tutorial Course Committee for a special course of his own selection, and this petition will be granted whenever it is possible to find a tutor to conduct conferences and direct the reading in the field of his choice.

HONORS COURSES

Any sophomore or junior with high grades may apply in writing to the chairman of the Honors Committee for the privilege of being a candidate for Honors. This committee will grant or refuse permission after an examination of the student's record, and after consultation with the professors under whose guidance he proposes to work.

Students desiring to read for Honors in their senior year should make their plans toward this end as early as possible. Since the student will be expected to devote most of his time in his senior year to Honors work, as many degree requirements as possible should be fulfilled by the end of the sophomore year, the tutorial course of the junior year should be in the department selected for Honors, and all special degree requirements, including Bible 51 and 52, should, if possible, be fulfilled by the end of the junior year.

A student reading for Honors has the opportunity to do more independent and more intensive work in his major department than a regular student. He shall take only two class courses outside his field of specialization. One of these courses may be Bible 51-52, if this course has not been taken in the junior year. The other should be in a field related to that in which he is reading for Honors, and must be approved by the major department.

Senior Honors work will earn eighteen hours of credit. This program shall be ar-

ranged with the advice of the department concerned.

After the work of the student has been outlined, in conference between the department and the student applying for Honors work, the program shall be reported to the Honors Committee.

Honors will be determined by a final written examination. The examination papers will be graded by three examiners, of whom at least one will be an outside examiner. The examination will be comprehensive, testing both the general and the specific knowledge of the student in those portions of the field which he has chosen for his Honors work.

Honors will be conferred only upon those who have fully and satisfactorily met the requirements for Honors, and either Honors or High Honors will be conferred. If the student's work for Honors is deficient either in extent or in quality, he may be granted, upon the recommendation of the examiners, either the degree with distinction or the usual degree in course.

For the year 1939-40 the Committee on Honors consists of the following: A. P. Kelso, *Chairman*, D. M. Amacker, John H. Davis, A. T. Johnson, C. P. Lee, P. N. Rhodes, C. G. Siefkin, R. P. Strickler.

CLASS HONORS FOR 1938-39

GRADUATING WITH HONORS

- George Gage, with high honors in English.
Harmon Robert Holcomb, Jr., with high honors in English.
Herbert Jonas Bingham, with honors in Political Science.
Flurry McCarthy DeMere, with honors in Biology.
Edith Louise Kelso, with honors in English.
Thomas Barksdale McLemore, with honors in Economics and honors in Political Science.
William Norio Nakajima, with honors in Mathematics.
Harriet Spencer Pond, with honors in Chemistry.
George Brinton Scott, Jr., with honors in Political Science.

GRADUATING WITH DISTINCTION

	Major Subject
Rachel Ann Beasley.....	<i>Mathematics</i>
Sarah Aydelott Boothe.....	<i>Mathematics</i>
Ralph Horace Brown.....	<i>History</i>
Samuel Cutter Carter.....	<i>Biology</i>
Stephen Robertson Frazier.....	<i>Economics</i>
Charles Hayden Freeburg.....	<i>Economics</i>
Charles Odell Gardner.....	<i>History</i>
Val John Huber.....	<i>Mathematics</i>
Hylton Semmes Neill.....	<i>Economics</i>
Thomas Jefferson White, Jr.....	<i>Mathematics</i>
William Thomas Tyson, Jr.....	<i>Biology</i>
Betty Barber Wells.....	<i>Biology</i>

JUNIOR CLASS

- First Place—William Harlin McBurney.
Second Place—William Campbell Donelson.
Third Place—Tie between David Schulherr
and Thomas William Simpson, Jr.

SOPHOMORE CLASS

- First Place—Tie between John Hoskins Kier
and Taylor Malone, Jr.
Next Place—Jac Covington Ruffin.
Next Place—Tie between Mildred Wilson
Noce and Robert Paetzel Price.

FRESHMAN CLASS

- First Place—Reama Lecroy DeVall.
Next Place—Tie between Robert Eugene
Cogswell and Robert Colegrove Meacham.
Next Place—Tie among James Arthur Cogswell,
Thomas Cox Duncan, and Martha
Poston Miller.

The following prizes for the 1938-39 session were awarded:

The Spencer Greek Prizes—

- First Year Greek—James Arthur Cogswell.
Second Year Greek—Robert Paetzel Price.
Third Year Greek—David Lawrence Osborn.

The Belk Bible Medal—Tie between Dorothy Irene Daniel and Thomas Cox Duncan.

The Chi Omega Sociology Prize—Betsy e Fowler.

The Alpha Theta Phi Medal (to the freshman student making the highest average for the year)—Reama Lecroy DeVall.

The Alpha Theta Phi Cup (to the sophomore student making the highest average for the year)—Tie between John Hoskins Kier and Taylor Malone, Jr.

The Seidman Award (to the graduate most excellent in both scholarship and athletics)—Charles Odell Gardner.

The Chi Beta Phi Scientific Fraternity Grand Chapter Award—William Norio Nakajima.

The Sigma Upsilon Cup (to the freshman doing the best literary work during the year)—Elder LeConis Shearon.

STUDENT ACTIVITIES

In 1934 the student body of SOUTHWESTERN adopted the point system for the curtailment of student activities. Last year this system was revised. The enforcement of the point system is under the supervision of the vice-president of the student body.

The purpose of this plan is to develop leadership among a greater number of students and to stop the over-burdening of a few leaders. It will also enable students to do better work in their activities by more concentration and allow them more time for study and social life.

The program allows each student fifty activity points a year. The office of president of the student body counts 50 points, but he is *ex officio* a member of the Elections Commission, the Men's Panhellenic Council, and the Christian Union Cabinet, and he may be president of his fraternity.

The following is a list of offices and activity points assigned to each:

President of the Student Body.....	50
Editor of Sou'wester.....	35
Editor of Lynx.....	30
President of Men's Panhellenic.....	30
President of Honor Council.....	30
Secretary-Treasurer of Student Body.....	30
President of Women's Panhellenic Council	30
Vice-President of Student Body.....	30
President of Y. W. C. A.....	30
President of Women's Undergraduate Society	30

Business Manager of Sou'wester.....	25
President of Christian Union Cabinet.....	25
Intramural Sports Director.....	25
President of Service Club.....	25
Captain of Football Team.....	25
Business Manager of Lynx.....	20
President of Fraternity or Sorority.....	20
President of Ministerial Club.....	20
President of Men's Bible Class.....	20
President of Omicron Delta Kappa.....	20
President of Torch	20
President of "S" Club.....	20
President of Publications Board	20
Editor of Journal.....	20
President of Senior Class.....	20
President of Elections Commission.....	20
President of Blue Stockings.....	20
Athletic Managers	15
President of Stylus Club.....	15
Football Program Manager.....	15
"F" on preceding report period.....	10
Staff Editors of Sou'wester.....	10
President of Alpha Theta Phi.....	10
President of Nitist Club.....	10
President of Freshman, Sophomore, or Junior Class.....	10
President of Episcopal Club.....	10

THE HONOR SYSTEM

ADOPTED AND PRESCRIBED BY THE
STUDENT BODY

In order that in every sphere of academic work, good order and conduct becoming a gentleman may be secured, the students voluntarily accept and maintain an Honor System, and its standards are enforced by tradition and public opinion among the students. At the beginning of each scholastic year, the student body meets in solemn conclave, at which time the obligations of the Honor System, especially in the matter of reporting irregularities, are made perfectly clear and obligatory. Cards pledging their whole-hearted support of the Honor System are presented and signed by those students who are in accord with the plan.

The Honor System at SOUTHWESTERN applies not only to honesty in examinations, tests, and classroom work, but also to honesty in all phases of campus activities. It applies to dishonesty in any form, and any student who commits an unworthy act is guilty of a breach of the Honor System, and thereby subjects himself to the discipline of the Honor Council.

The cooperation of every student of the college is essential for the successful operation of the Honor System. It becomes, therefore, the duty of each student who enters SOUTHWESTERN not only to keep inviolate the trust reposed in him by the college, by avoiding all unworthy and ungentlemanly conduct

himself, but also to be ready and willing to report immediately to the Honor Council for action any one who may be guilty of any breach of the Honor System.

For the purpose of aiding in carrying out the Honor System, an Honor Council was established by the student body some years ago. In order, however, to clarify and perfect the system of student government at SOUTHWESTERN the following amendments to the constitution have been adopted by the student body:

REPRESENTATION

The Honor Council shall be composed of thirteen members as follows:

From the Senior Class, three men and one woman.

From the Junior Class, three men and one woman.

From the Sophomore Class, two men and one woman.

From the Freshman Class, one man and one woman.

ELECTION

The junior, sophomore, and freshman classes shall elect their representatives for the following year in the first week of May. Nominations are to be made by the retiring Honor Council. Two candidates are to be named for each office to be filled. It is highly desirable that same members of the old Honor Council be elected on the Honor Council for the succeeding year. New freshmen shall elect their representatives on the third Monday in Oc-

tober. In every case the women shall elect the women representatives, and the men shall elect the men representatives.

The Faculty agrees to vest full authority in the Honor Council and to act as a court of appeal. If upon the appeal of the accused person, or the minority of the Honor Council, the Faculty believes that an unjust decision has been made, it may submit the case to the Honor Council for a retrial.

Membership in the Honor Council is considered one of the highest honors in the power of the student body to bestow upon the individual members of the different classes.

The following have been chosen as members of the Honor Council for the 1939-40 session (the Freshman representatives to be chosen on the third Monday in October):

OFFICERS

President—Bernard Lee Lockridge.
Vice-President—Frank Addams England.
Secretary—Marion Hughes Dickson.

SENIORS

Dan Ferguerson Carruthers
John P. K. Cavender
Virgil Henry McCraney
Mary Louise Hughes

JUNIORS

Frank Addams England
Harold Edsol Jones
Bernard Lee Lockridge
Marion Hughes Dickson

SOPHOMORES

James Ward Andrews
Robert Colegrove Meacham
Katherine Stephenson Weaver

MUSIC

Opportunities for musical activities are provided by the following organizations:

THE SOUTHWESTERN BAND

SOUTHWESTERN has a complete marching band with a personnel of forty. The band plays for football games and at other college events and takes part in civic parades. The addition of new equipment is increasing the size of the band and giving opportunity for many to learn to play a band instrument under the instruction of Professor B. C. Tut-hill, the Director of Music. Concert music is also being included in the band program.

STRING ENSEMBLE

The string players among SOUTHWESTERN students are organized in an ensemble group, particularly for their own enjoyment in playing together, and to appear at appropriate college functions.

THE SOUTHWESTERN SINGERS

President—Alexander Whittemore Cortner.
Vice-President—John Langdon Woolsey.
Secretary-Treasurer—Anna Elizabeth Day.
This is a mixed chorus of men and women students organized primarily to lead the singing of hymns at the morning chapel and at the regular vesper services. The Singers,

however, study the best types of choral literature and, acting as a glee club, make visits to nearby communities.

PUBLICATIONS

Students interested in publication work have an unusual opportunity to exercise their ability on the four SOUTHWESTERN publications. The staffs of publications are selected by the Publications Board, which board chooses the men who have proven themselves both interested and capable. All freshmen, as well as all the other members of the student body who have had any experience along this line, are urged to connect themselves in any capacity with these publications.

THE SOUTHWESTER

Editor—William Patrick Murphy.
Business Manager—John William Young, Jr.

The members of the student body unite in publishing a weekly paper, the SOUTHWESTER, the campus news sheet. Besides keeping the student body in touch with the social events and campus activities, it offers splendid practice to those anticipating a journalistic career, for the staff gains much experience in the various phases of newspaper work.

THE LYNX

Editor—George Denning Jackson.
Business Manager—William Campbell Donelson.

The LYNX is the college annual published by the students. It is abundantly illustrated, and contains information about the classes, fraternities, athletics, clubs, organizations,

and other matters of interest to the students in connection with life at SOUTHWESTERN.

THE STUDENTS' HANDBOOK

The object of this book is to extend to all students a warm welcome to the college, to introduce the first-year men to some of our customs and activities, and to invite all to share in the privilege of promoting the best interest of SOUTHWESTERN.

THE JOURNAL

Editor—William Harlin McBurney.

The Journal is SOUTHWESTERN's literary magazine. All those who have acquired, or are desirous of acquiring, the ability to write are asked to contribute.

THE SOUTHWESTERN PUBLICATIONS BOARD

President—Robert Alexander Elder.

This board was organized for the purpose of exercising supervision and control of all student publications, with special reference to their financial management and the soliciting of advertising.

All student publications must be authorized by the board, which also apportions the publication fees to the respective publications.

All moneys, whether from advertisements or fees, must be turned over to the treasurer of the board, and obligations may be incurred only on its approval. Financial statements must be rendered at the end of each report period by every publication.

No one shall solicit advertising in the name of SOUTHWESTERN without authorization from

the board. No publication, without its special permission, shall solicit local firms for advertising when such firms are already advertising in one of the other recognized publications of SOUTHWESTERN.

This board is composed of a president elected by the student body from the rising junior or senior class, three other students from the rising senior, junior, and sophomore classes, respectively, together with two faculty members appointed by the president of the college, and a permanent treasurer, the bursar of the college.

ORGANIZATIONS

STUDENT BODY

President—John Allen McGrady.
Vice-President—Frank Addams England.
Secretary-Treasurer—Virginia Katherine Waggener.

The student body is an organization composed of all the students of the college in any current year, and has authority in matters pertaining to student affairs.

The office of president is the highest honor in the power of the student body to bestow.

Nominations for Student Body President shall be heard the last Monday in April, and the election shall be held the first Monday in May. Other officers of the student body shall be elected during the first week in May.

THE STUDENT COUNCIL

The Student Council is the official and representative organization of the student body. It outlines and discusses and presents matters

for the consideration of the student body. It directs relations between the student organizations. While disciplinary matters are in the hands of the faculty, the Student Council helps to shape public opinion, cooperates actively with the administration, and acts as a clearing house between the students and the faculty.

The Student Council is composed of an *ex officio* group constituted as follows: the president, vice-president, and secretary of the student body, which persons are elected by the student body and hold these same offices in the Student Council. The other members of this Council are the presidents of the four classes, of the Honor Council, of the Southwestern Christian Union, of the Panhellenic Councils, of the Publications Board, of the Student Service, of Alpha Theta Phi, of Omicron Delta Kappa, of the Elections Commission, and the editor of the SOUTHWESTER.

THE SOUTHWESTERN CHRISTIAN UNION

President—John William Young.
Vice-President—Allen Horton Craft.
Secretary—Marion Hughes Dickson.

The Southwestern Christian Union includes those organizations which are distinctly devoted to the development of the spiritual life of the students, and includes at present the Southwestern Bible Class, the Y.W.C.A. and the Ministerial Club. The Cabinet is composed of the officers of the Southwestern Christian Union; Walter Fontaine Hall, the president of the Ministerial Club; and Mar-

ion Hughes Dickson, the president of the Y.W.C.A.

Among the activities of the Southwestern Christian Union is a week of prayer and consecration. At these services a distinctly evangelical message is presented to the students of the college. Last session the Reverend Charles F. Wishart, D.D., President of the College of Wooster, Wooster, Ohio, conducted the meetings.

The various organizations of the Southwestern Christian Union endeavor to relate themselves closely to the life and interests of the students.

THE SOUTHWESTERN BIBLE CLASS

President—Allen Horton Craft.
Vice-President—Tom Brantley Mobley.
Secretary-Treasurer—Ned Hermann.

This organization plays an important part in the religious life of the men students. It holds a meeting in the Band House on the campus every Sunday immediately after the evening meal. It is taught by members of the faculty, various professors teaching the class for one or two successive weeks. This class forms the nucleus of an earnest group of students whose activities are by no means limited to the class meetings. Its members take an active part in the religious life of the community.

THE MINISTERIAL CLUB

President—Walter Fontaine Hall.
Vice-President—James Arthur Cogswell.
Secretary-Treasurer—David Lawrence Osborn.

The students at SOUTHWESTERN who are preparing for the ministry as their life work, and others who are interested, have organized themselves into an association with the twofold purpose of creating a feeling of fellowship and *esprit de corps*, and of presenting and discussing personal problems and those questions which pertain to the ministry. The club endeavors from time to time to secure the advice of those already in the ministry and to obtain the benefit of their maturer judgment. Luncheon meetings are held weekly.

THE YOUNG WOMEN'S CHRISTIAN ASSOCIATION

President—Marion Hughes Dickson.
Vice-President—Annie Few Work.
Secretary—Virginia Katherine Waggener.
Treasurer—Priscilla Macon Shumaker.

The Y.W.C.A. is one of the organizations on the campus to which all girls can belong. It takes its purpose from the national organization, which purpose is stated as follows:

"We unite in the desire to realize full and creative life through a growing knowledge of God—

"We determine to have a part in making this life possible for all people—

"In this task we seek to understand Jesus and follow Him."

The helping with freshmen during the Orientation Period, and Christmas and Thanksgiving kindness to a poor family were a part of its work the past year.

All freshman girls who are interested in this work are invited to help in it.

THE EPISCOPAL CLUB

President—William Henry Belcher.

Vice-President—Johnson Bryan Rhem.

Secretary-Treasurer—Elizabeth Rowlett Paine.

This club was formed by and is connected with the National Council of Episcopal Clubs, which has sponsored similar groups in other colleges and universities. The primary purpose of the club is to bring students together, irrespective of religious affiliation. The club welcomes members of other denominations. The feature of the meetings of the club is informal discussion on the relation of religion to the problems of every-day life. Meetings are held twice a month, and various ministers of the city lead the discussions.

OMICRON DELTA KAPPA

President—George Denning Jackson.

Vice-President—William Harlin McBurney.

O. D. K. is a national honorary fraternity organized for the purpose of giving recognition to those all-round men of the junior and senior classes who stand preeminently for the upholding of the high standards of the college. Membership in the fraternity is limited to three per cent of the male members of the

student body, to be chosen from the two uppermost classes in the college.

O. D. K. is not merely a scholarship society, nor is it simply a literary or social organization, but, as will be seen from the qualities which are taken as a basis for selection for membership, its aim is to select the best all-round men in the college, and membership in this order is one of the highest honors to be won at SOUTHWESTERN.

THE TORCH SOCIETY

President—Priscilla Macon Shumaker.

Vice-President—Blanche Evans Fleming.

Secretary-Treasurer—Anne Tuthill.

The Torch Society is an honorary leadership group for senior women. The purpose of the organization is to recognize women students who have attained a high standard of leadership in campus activities and to bring together the most well-rounded, representative women on the campus.

THE STYLUS CLUB OF SIGMA UPSILON

Sigma Upsilon is a national honorary literary fraternity with chapters in the leading colleges of the country. The Stylus Club of SOUTHWESTERN is a chapter of this fraternity, and was organized by a group of students and members of the faculty to stimulate authorship and criticism. It is purely an honorary society, and requires a high standard of scholarship, marked literary ability, and a certain congeniality. Membership is limited to twelve, chosen from the faculty.

seniors, juniors, and sophomores. Sophomores must have completed three semesters. At the bi-monthly meetings a program is given consisting of original writing or a study of the work of current authors.

THE BLUE STOCKINGS

The Blue Stockings is an honorary literary society for women. The purpose of the club is to encourage literary composition among the women students.

ALPHA THETA PHI

President—William Harlin McBurney.

Vice-President—William Campbell Donelson.

Secretary—George Denning Jackson.

Alpha Theta Phi is a purely scholastic fraternity of both men and women students, including only those who have made the highest records in scholarship in the college. It is petitioning Phi Beta Kappa.

THE SPANISH CLUB

The Spanish Club exists for the purpose of cultivating a more practical acquaintance with the life, language, and literature of the Spanish-speaking peoples. Membership is limited to those students who have had two years of college Spanish, or its equivalent, or who have otherwise acquired an oral command of the language. Meetings are held every three weeks. They are partly social and in part given to formal programs, including dramatic performances, addresses, and round-table discussions.

GOLF ASSOCIATION

The Golf Association is an organization of all those interested in golf. The splendid Overton Park course is available for use of members, and tournaments are held every year.

THE SOUTHWESTERN PLAYERS

The SOUTHWESTERN Players form the dramatic group on the campus. Excellent training is offered the members in such phases of dramatic art as acting, costuming, staging, lighting, make-up, and play writing. Outstanding work in the Players group is rewarded by membership in the Proscenium Guild, the honorary dramatic fraternity. To be eligible for membership, participation in at least one production of the Players is required.

THE PROSCENIUM GUILD

Membership in the Proscenium Guild is the highest honor for the student of dramatics. The purpose of this organization is to foster, stimulate, and encourage dramatics in the college, and to recognize and unite the students who have displayed unusual histrionic ability. Meetings are held once a month in the Bell Room of Neely Hall, at which prominent representatives of the professional stage and radio world speak to the members.

CHI BETA PHI

Chi Beta Phi is a national honorary science fraternity composed of only those men students who are majoring in science and who

have made a high scholastic average in their courses.

TAU KAPPA ALPHA

Tau Kappa Alpha, the national forensic honor society, has a chapter at SOUTHWESTERN. The purpose of this fraternity is to stimulate forensic attainment by electing to membership students who have shown outstanding ability in speech activities. The fraternity endeavors to promote high standards of speech and interest in debating by sponsoring the various speech contests and intercollegiate debates. Under its auspices the SOUTHWESTERN debaters make several trips to other colleges each spring.

WOMEN'S UNDERGRADUATE SOCIETY

President—Annie Few Work.

This society was organized under the direction of the Dean of Women. Its membership includes all the women students of SOUTHWESTERN, each class being organized separately. The main purpose of this society is to promote interclass competition among the women students in all lines, especially in athletics.

THE NITISTS

The Nitists are twenty men from the students and the faculty who meet on alternate Thursdays in the Bell Room of the college. At each meeting one member of the group reads a paper on some subject of philosophic, ethical, or social nature. Then each member in turn is called upon to discuss or criticize the paper. Non-members from within or

without the college may be invited to attend meetings when the subjects are of special interest to them.

THE STUDENT SERVICE

President—William Waring Worthington, Jr.

The Student Service functions in a wide variety of student activities. It welcomes and acts as host to visiting college teams and guests of the college, and acts as ushers at athletic contests. Welcoming new students to the campus is a special duty of the Student Service. In addition, it seeks to encourage and sponsor all activities beneficial to the college and its students. Members of this club wear a distinctive red blazer coat with the letter "S" on the breast pocket and the sleeve. Each fraternity and non-fraternity group is represented in the club.

THE INTRAMURAL ATHLETIC ASSOCIATION

This group has charge of all intramural athletic activities. It is composed of the director of intramural athletics, who is a member of the college coaching staff, a student director, and assistant student directors from each of the fraternities and from the non-fraternity group. The various social organizations compete for an intramural trophy which may become the permanent possession of any group winning it three times in succession.

THE "S" CLUB

The "S" Club is composed of all the men who have earned a letter in any one of the intercollegiate sports in which SOUTHWESTERN

takes part. These sports are, at present, football, basketball, tennis, and track.

THE SOCIAL FRATERNITIES

There are six well-established chapters of leading national fraternities on the campus of SOUTHWESTERN. These six, named in the order of foundation, are Pi Kappa Alpha, Alpha Tau Omega, Sigma Alpha Epsilon, Kappa Sigma, Kappa Alpha, and Sigma Nu. All of the fraternities have built splendid lodges on the campus.

There are chapters of five national sororities. These are Chi Omega, Kappa Delta, Alpha Omicron Pi, Zeta Tau Alpha, and Delta Delta Delta. All sororities have erected very attractive lodges on the east side of the campus.

Only regular students are eligible for these organizations, and no student may be initiated into one of them until after the first semester. In order to be eligible for initiation, a student must have passed at least twelve semester hours net at SOUTHWESTERN during the preceding semester, with a scholastic average of at least 1.2, and must have the written certification of the Registrar and the chairman of the Committee on Scholarship and Statistics, which cannot be given until all college accounts are settled in full. No course, entered after the expiration of the time allowed for change of course without fee, may count towards the number of hours credit which a student must obtain to be eligible for initiation into a fraternity or sorority.

In accordance with recent actions of the Panhellenic Councils, and at their request, the faculty has adopted the following regulation:

"No fraternity or sorority may initiate any new members unless the grades of its active members for the two semesters preceding average at least 1.75."

Two societies, Pi and S. T. A. B., organizations which strive to promote friendly relations between sororities, have chapters at SOUTHWESTERN.

THE PANHELLENIC COUNCILS

The Panhellenic Council has the hearty support of the college authorities, and the pledged cooperation and support of each of the fraternities on the campus. As stated in the Constitution, the Council is to handle all matters concerning the several fraternities in their relations with the student body.

The special attention of the new student is called to the rules that have to do with pledging, since a clear understanding of, and a careful adherence to, these rules will probably save embarrassment for both the student and the fraternity.

RULES OF THE MEN'S PANHELLENIC COUNCIL

The following are the rules adopted by the Men's Panhellenic Council to control rushing for the session of 1939-40:

1. There will be open rushing during the summer until September 13.

2. The quiet season will begin with freshman orientation and will continue until Monday, September 18, at 7:30 p.m. Rushing will start at 7:30 p.m. on Monday, September 18, and will continue through Friday. Rushing will end and a quiet period will begin at midnight, Friday, September 22. Pledging will be by preferential system at 2:00 p.m. on Saturday.

3. There will be only one afternoon date, on Wednesday, September 20. All other afternoons are to be regarded as quiet, and freshmen are not to be in company with any man affiliated with a fraternity at SOUTHWESTERN, actively or as an alumnus. Violation of this rule constitutes a major offense.

4. The Panhellenic Council will make all dates. Each fraternity will submit its list of prospective rushees, and the dates will be allotted to each fraternity by the Council.

5. Major dates are defined as afternoon dates and night dates. The afternoon date is to last from 3:30 until 6:00 p.m. Night dates are to begin at 7:30 p.m. and last until midnight.

6. There will be no minor dates. Violation of this rule by any fraternity will constitute a major offense. No student will be eligible to pledge a fraternity with which he has not had a regular rush date. This rule applies only to pledging on Saturday, September 23. If a student wishes to pledge a fraternity with which he has not had a date during the

regular rush season, he must wait until the beginning of the second semester of the college year.

7. Rushing and dates may take place outside the city limits of Memphis, but any such occasion must be reported to the head of the Council.

8. No fraternity shall prevent or interfere with a rushee's being on time for his next date; rushees must be prompt in keeping their dates.

9. No party, held during the rush season, to which rushees are invited, shall be given, the cost of which exceeds ten dollars. Each fraternity will be required to submit to the treasurer of the Council an itemized expense account of each rush party held.

10. There shall absolutely be no change in dates by either the fraternity or rushee.

11. Any prospective SOUTHWESTERN student found in possession of a pledge pin at any time before the afternoon of Saturday, September 23, will be declared ineligible to pledge that fraternity for the first semester and the fraternity will be fined \$25.00.

Any fraternity, a member or members of which violate any of these rules, must pay a fine of not more than twenty-five dollars and not less than ten dollars, at the discretion of the Panhellenic Council. This fine must be paid before noon Saturday, September 23. Failure to pay this fine in full will cause

the fraternity so convicted to be deprived of pledging privileges and to be suspended from the Council for the first semester of the 1939-40 session.

The trial of the fraternity or fraternities accused of violating these rules shall be conducted by a tribunal composed of five members of the faculty duly selected by the Council. This tribunal shall convict or acquit by a majority vote. The chairman of this body shall receive and entertain all charges brought against any fraternity.

Any freshman found guilty of violating the above rules cannot pledge a fraternity during the first semester.

Council members are:

Tom Brantley Mobley, President, Alpha Tau Omega.

Virgil Henry McCraney, Vice-President, Sigma Alpha Epsilon.

Frank Addams England, Secretary-Treasurer, Kappa Sigma.

Paul Jones Buchanan, Pi Kappa Alpha.

William E. Davidson, Pi Kappa Alpha.

Harold Naill Falls, Alpha Tau Omega.

Thomas Rothrock Miller, Sigma Alpha Epsilon.

George D. Jackson, Kappa Sigma.

William H. McBurney, Kappa Alpha.

Jac Covington Ruffin, Kappa Alpha.

Hays Brantley, Jr., Sigma Nu.

William W. Worthington, Jr., Sigma Nu.

(John A. McGrady, the President of the Student Body, and William P. Murphy, the Editor of the Sou'wester, are *ex officio* members of the Council.)

RULES OF THE WOMEN'S PANHELLENIC COUNCIL

The Women's Panhellenic Council is composed of two women from each of the five sororities represented on the campus.

The following are the rules adopted by the Council to control rushing for the session of 1939-40:

1. There will be open but not final rushing during the summer until September 13.

2. The quiet season will begin on September 13 and will last until Wednesday, September 20, when the official rushing season will begin.

3. Each sorority will give three rush teas on the afternoons of Wednesday, Thursday, and Friday, September 20-22. Rushing will end after the tea on Friday, and there will be a quiet period until Saturday night, September 23.

4. Pledging will be held at 7:30 p.m. on September 23.

Council members are:

Jean S. Walton, President, Kappa Delta.

Virginia Katherine Waggener, Vice-President, Alpha Omicron Pi.

Dorothy Helene Steuwer, Secretary, Zeta Tau Alpha.

Catherine Moore, Treasurer, Delta Delta Delta.

Harriette Hollis, Chi Omega.

Mary Louise Hughes, Chi Omega.

Priscilla Shumaker, Kappa Delta.

Virginia Mangum, Alpha Omicron Pi.

Kate Parker, Zeta Tau Alpha.

Marion Dickson, Delta Delta Delta.

REGULATIONS CONCERNING SOCIAL FUNCTIONS

The following regulations governing social functions given and attended by SOUTHWESTERN students represent the result of cooperation between student organizations and the faculty committee on student welfare, and are subject to such revision as the best interests of the student body may require.

The Commission on Student Dances, which is composed of members of the junior and senior classes, has jurisdiction over all all-college dances and all dances held in the college gymnasium. It has its own constitution and by-laws. This Commission has alumni representatives, and is charged with the duty of preserving orderly conduct at all but private dances.

1. All evening parties given by or for a sorority or fraternity or other campus organization must be held on Saturday night, or on the night before a holiday. Afternoon teas and other afternoon parties may be held on days other than Saturday or on the day before a holiday, but must close not later than 8:00 p.m. Dates for the exclusive use of a sorority or fraternity are to be assigned by the two Panhellenic Councils, in cooperation with each other. A copy of this calendar of dates must be filed with the Dean in advance.

2. The Men's Panhellenic Council may hold a social function at Thanksgiving, mid-year, and Easter (to close at 1:00 a.m. before holidays, at 12:00 midnight otherwise).

3a. The Dean of Women must be notified in writing in advance of any dance or party to be given by or for any sorority or other women's organization.

3b. The Dean of Men must be notified in writing in advance of any dance or party to be given by or for any fraternity or other men's organization.

4. At all afternoon entertainments given by sororities which men students attend there must be at least two student members from the junior or senior years.

5. Evening parties and dances must close by 12:00 o'clock, except that petitions for later closing, on nights before holidays, will be considered by the Student Welfare Committee.

6. Within one week after the Panhellenic and all other fraternity and sorority social functions, a record must be returned to the Dean's office containing the following information:

- (a) the names of chaperones invited and attending,
- (b) the names of a committee (of not less than four or more than ten), responsible for good conduct.
- (c) notice of any misconduct observed by the committee,
- (d) the hour at which the social function closed.

Note: This record must be made for both afternoon and evening parties.

7. No social functions are to be held on Sunday.

8. All organizations except fraternities and sororities and the Panhellenic Councils must secure permission for their parties from the Student Welfare Committee. The chairman of this committee is Dr. R. S. Pond.

9. Failure to conform to these regulations will necessitate disciplinary measures on the part of the Administrative Committee.

ATHLETICS

The college athletics are controlled by the Committee of the Faculty on Athletics. The semester fee to the college pays for all physical training and for admission to all intercollegiate contests held in Memphis. Every student, upon entrance, is given a thorough physical examination by the college physician, and, if he is physically fitted for it, he may compete for any athletic team or participate in any form of exercise under the supervision and guidance of the director of athletics.

If not fitted for participation in major sports, he may engage in such games and physical training as are best suited to develop him and to keep him in good health.

SOUTHWESTERN engages in intercollegiate contests in football, basketball, track, golf, and tennis.

Each year the varsity tennis teams compete with teams from Vanderbilt, the University of Tennessee, Sewanee, Millsaps College, Mississippi College, and the University of Mississippi. Freshman teams compete with other freshman teams from nearby institutions. A freshman singles tournament is regularly held each fall.

The Committee of the Faculty on Athletics may at any time during a semester limit athletic participation and remove from teams any student whose scholarship record is unsatisfactory.

SOUTHWESTERN is a member of the Dixie Conference. The eligibility of the members of its athletic teams is governed by the constitution, by-laws and rulings of this body.

"LYNX" 1939 FOOTBALL SCHEDULE

- Oct. 7—University of Mississippi—Crump Stadium.
- Oct. 14—Washington and Lee University—Crump Stadium.
- Oct. 21—Mississippi State College—at Starkville.
- Oct. 27—University of the South—Crump Stadium.*
- Nov. 3—Loyola University—at New Orleans.*
- Nov. 11—Howard College—Crump Stadium.
- Nov. 18—Clemson College—Crump Stadium.
- Nov. 25—Centenary College—at Shreveport.

*Night game.

VARSIY TRACK RECORDS

<i>Event—Holder</i>	<i>Record</i>	<i>Year</i>
100 yard dash Henry Nixon Peek	9.9	1939
220 yard dash Herbert Newton	22.5	1931
440 yard dash Herbert Newton	50.1	1933
880 yard run Harold High	2:1.1	1933
One mile run Clark Porteous	4:37.7	1932
Two mile run Riley McGaughran	10:9.8	1931
120 yard high hurdles Eldridge Lilly	16.2	1930
220 yard low hurdles John McKay Boswell	25:3	1937
Mile relay Harold High, Andrew Edington, William Wil- son, Herbert Newton	3:33.5	1933
Pole vault Morris Ford	12:5 $\frac{3}{8}$	1929
Shot Will Rhea Winfrey	46.11	1937
High jump Porter Chappell	6.00	1936
Discus Herman Davis	139.0	1937
Broad jump Herbert Newton	22:6.5	1931
Javelin Orley Nettles	173.8	1937

VARSIY ATHLETIC AWARDS 1938-39

FOOTBALL

P. T. Baker	Frank Morgan
Henry Bergfeld	Harry Morris
Anthony Canzoneri	Clois Neal
J. P. Cavender	Orley Nettles
Maynard Dabbs	Irving Orenstein
A. R. Dawson	Fred Partin
Fred Drees	Charles Perry
Oney Ellis	Robert Porter
Edward French	Baxter Pouncey
Doyle Fuller	Levon Self
Charles Gardner	Gaylon Smith
Harold Jones	Neal Williams
Charles Lee	Rex Wilson
Billy King Little	Will Rhea Winfrey
Bernard Lockridge	Claude Brown, Mgr.

BASKETBALL

George Blakemore	Clois Neal
Anthony Canzoneri	Irving Orenstein
Virgil Cox	Levon Self
Harold Jones	Gaylon Smith
John McGrady	

TRACK

Clifford Cast	Schuyler Reid
A. R. Dawson	Gaylon Smith
Robert Foley	Leon Underwood
Orley Nettles	Will Rhea Winfrey
Fred Partin	R. G. Goodrich, Mgr.
Henry Peek	

TENNIS

Henry Boothe	Shepherd Tate,
John McGrady	Playing Manager
Robert Meacham	Waddy West
William Murrah	Tom White

GOLF

James Caden	Harry Waring
Robert Stites	Rex Wilson
William Tyson	

FRESHMAN ATHLETIC AWARDS 1938-39

FOOTBALL

William Anderson	Hayes Heaton
James Andrew	Pete Leird
Leslie Bailey	Shuyler Reid
Clifford Cast	Sam Rutherford
Jack Conn	Leon Underwood
Russell Gilmer	Beryl Waller
R. G. Goodrich	Dan West
Jack Hamilton	Lemuel Williams
Malcolm Hayles	Alec Streete, Mgr.

BASKETBALL

James Andrew	Shuyler Reid
Robert Black	Beryl Waller
Clifford Cast	Dan West
Jack Conn	Robert Rhodes, Mgr.

INTRAMURAL AWARDS

Paul Buchanan	Pi Kappa Alpha
Val Huber	Pi Kappa Alpha
William Bradford	Non-fraternity
William Nakajima	Non-fraternity
Boyce Johnson	Sigma Nu
Herbert Smith	Sigma Nu
Harold Falls	Alpha Tau Omega
William Moorhead	Alpha Tau Omega
William Boothe	Sigma Alpha Epsilon
Robert Elder	Sigma Alpha Epsilon
Frank England	Kappa Sigma
Henry Mobley	Kappa Sigma
William Maybry	Kappa Alpha
Robert Siedentopf	Kappa Alpha

WOMEN'S ATHLETIC AWARDS

Athletic Trophy—Kappa Delta Sorority.
 Basketball Trophy—Kappa Delta Sorority.
 Best Athlete—Priscilla Shumaker.
 Archery Award—Catherine Hollinger.
 Riflery Award—Mary Ware.
 Tennis Trophy—Celeste Taylor and Katherine Walker.

1939-40 OFFICERS OF WOMEN'S ATHLETIC ASSOCIATION

President—Margaret Jones.
 Junior Representative—Helen Quenichet.
 Sophomore Representative—Katherine Walker.

CLASS SCHEDULE, FIRST SEMESTER

80

Hours	MON.	TUE.	WED.	THUR.	FRI.	SAT.
8:30	Chapel	Chapel	Chapel	Chapel	Chapel	Chapel
9-10						
10-11						
11-12						
12-1						
1 p.m.	Lunch	Lunch	Lunch	Lunch	Lunch	Lunch

CLASS SCHEDULE, SECOND SEMESTER

81

Hours	MON.	TUE.	WED.	THUR.	FRI.	SAT.
8:30	Chapel	Chapel	Chapel	Chapel	Chapel	Chapel
9-10						
10-11						
11-12						
12-1						
1 p.m.	Lunch	Lunch	Lunch	Lunch	Lunch	Lunch

MEMORANDUM

MEMORANDUM

CLASS RHEEDITE SECOND QUARTER

Class	Room	Teacher	Subject	Text	Notes
101	101	101	101	101	101
102	102	102	102	102	102
103	103	103	103	103	103
104	104	104	104	104	104
105	105	105	105	105	105
106	106	106	106	106	106
107	107	107	107	107	107
108	108	108	108	108	108
109	109	109	109	109	109
110	110	110	110	110	110

MEMORANDUM