

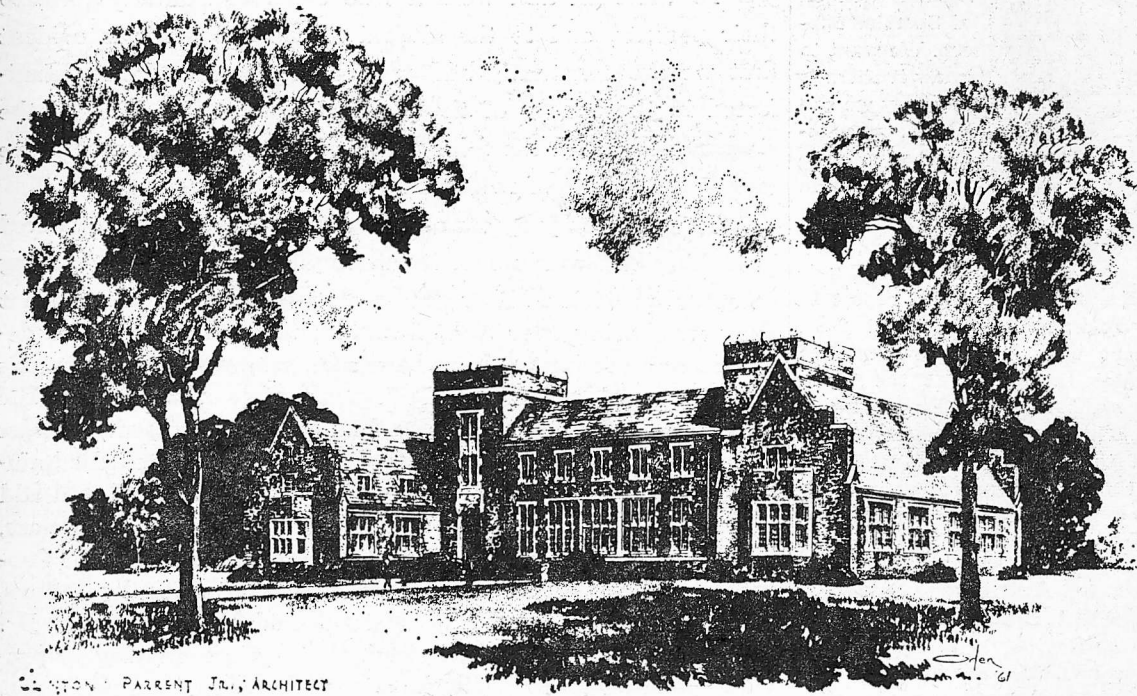
The Sou'wester

Southwestern at Memphis

43rd Year

MEMPHIS, TENNESSEE, FRIDAY, OCTOBER 20, 1961

Vol. 43, No. 6



CLAYTON PARRENT, JR., ARCHITECT

This is it! Southwestern's proposed Student Center, to be located 100 yards north of Palmer Hall, will be constructed as soon as the money becomes available. Estimated at \$400,000, this badly needed addition to campus facilities will house adequate space for social and organizational functions of S-W men and women. To study the floor plan, please turn to page 3.

Welcomes Extended For Five Hundred Parents Visiting College This Weekend

Southwestern's annual Parents' Day is tomorrow, October 21. Dr. W. Taylor Reveley, dean of admissions and chairman for the event, said some five hundred moms and dads will be present from homes in fifteen or more different states.

Traditionally, parents come early in the morning, attend classes with sons or daughters, or brush up on philosophy, or drop into a physics class to learn physical facts which were unheard of when they went to college.

Registration will begin at 8:30 a.m. in the Adult Education Center, where members of the Southwestern Woman's Club will serve coffee from 8:30 until 10.

Dr. Rene Williamson, a professor at Louisiana State University and father of a Southwestern senior, Parker Williamson, will be guest speaker at the Parents' Assembly at 10 a.m. in Hardie Auditorium. Dean Reveley will preside and brief welcomes will be given by the college president, Dr. Peyton N. Rhodes,

Mlle. Moore Adds Fashion to College

Patience Moore of Ackerman, Mississippi, has been appointed Mademoiselle's campus representative for Southwestern at Memphis, under the magazine's Campus Merchandising Plan. This is a fashion training program instituted by Mademoiselle to give undergraduates a practical induction into the field of fashion. Over seventy stores in college towns are currently enlisted in the plan.

As Mademoiselle's representative, Patience, a junior at the college, works from five to ten hours a week at her campus store. Her duties include more than just selling. She works on window and interior displays, helps with their advertising, writes fashion news releases, makes suggestions as to merchandising she thinks would be popular on campus, and participates in major promotions, such as putting on a campus fashion show.

Mademoiselle works with Patience by sending her suggestions for promotion ideas. In turn Patience keeps in contact with Mademoiselle through periodical reports of her activities.

and the Student Council president, Bill Davidson.

All the residence halls will hold open house during the afternoon from three until five and the Student Council will serve tea in the social rooms of Voorhies and Bellingrath Halls.

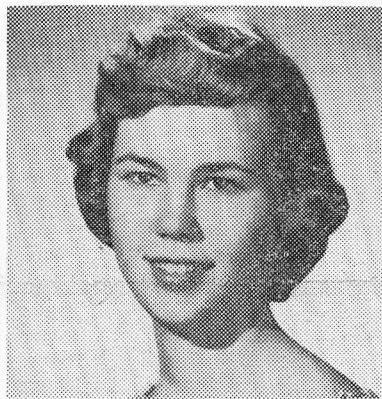
There is no football game scheduled for the Southwestern team on this date, but the cross country team will meet Union University of Jackson, Tennessee, on the home course.

In the evening parents and students will attend the Kappa Delta All Sing at 7:30 p.m. at East High School.

Kappa Delta All-Sing In East Auditorium Tomorrow Night To Apex Parents' Day

A long period of anticipation and excitement will come to a climax Saturday night in the East High auditorium when the Kappa Delta All-Sing begins at 8:00 p.m. Sponsoring this performance is an annual project of the Kappa Delta sorority; the proceeds from ticket sales are used to further its local and national philanthropy. Participants in the All-Sing include groups from each fraternity and sorority on campus and the Independent Women's organization. All will be in competition for awards, won last year by the Chi Omega sorority and by Sigma Nu fraternity.

The program will feature "Shenandoah" and "The Happy Wanderer," sung by ATO; the group from Kappa Sigma will sing "This Is My Country," and "Bonnie Blue Flag"; renditions of "Give Me Your Tired, Your Poor" and "A-Rovin'" will be presented by the Pi Kappa Alpha fraternity; "John Peel," "Madame Jeanette" and



Helen J. Strautman

Pi Intersorority Selects ZTA Helen Strautman

On Wednesday last, Helen Strautman was honored by being chosen to membership in Pi Intersorority. Helen, a senior, served as president of the Panhellenic Council this past fall; in this capacity she was also a member of the W.U.B. A member of Zeta Tau Alpha sorority, Helen attends Southwestern on an Honor Scholarship.

Plans For Long-Awaited Student Center Revealed

ADMINISTRATION, BOARD OF DIRECTORS JOIN IN MAJOR FUND-RAISING EFFORTS

The dreams and visions of many men, both young and old, will be realized in the completion of Southwestern's new student center, pictured at left. For four years students and faculty members have been working towards projecting the plans on paper; construction will get underway "Just as soon as we get the money to build it," said President Peyton N. Rhodes.

Pritchard To Attend Outer Space Meeting

Dr. Ross Pritchard of the International Studies Department is attending a four day national conference on outer space. Government officials, newspapermen, and interested businessmen and citizens compose the group of forty meeting at the Arden House in Harri-man, N. Y.

General Dwight Eisenhower, Mr. James Webb, director of NASA, and Lt. Gen. Bernard Schreiber, Air Force expert on space and missiles will take part in the discussions on peaceful and military uses of outer space and on the forming of a space program on our national economy.

The conclusions of the discussion will be released to government agencies, schools and the press.

Estimated cost of the proposed building is about \$400,000. Tentative sketches by H. Clinton Parrent, Jr., of Nashville, the college architect, show on the first floor ample lounges and game rooms which will accommodate student dances; a large snack area which can be extended through glass doors opening onto a broad terrace on the north side. On the second floor are three seminar rooms and five offices for student organizations.

Gothic Design

The building will be of collegiate Gothic design, with walls of Arkansas sandstone and roof of Vermont slate like all of Southwestern's permanent buildings. Its location will be about 100 yards north of Palmer Hall; it will cover part of the present Fargason Field, which will be relocated on the northwest corner of the campus.

Money for the center will have to come from alumni, parents of students past or present, or other friends of the college, for a privately owned college has no resources for building funds other than the generosity of education-minded individuals, corporations, or foundations. To date, the Student Center Committee, working under the auspices of the Student Council since 1957, has raised approximately \$3,000 by sponsoring campus activities: the Student Center Dance, the used book store, the Quartet-Sextet Sing, and Freshman Talent Night.

Will Unify Students

Bill Davidson, Student Council President, commented on the students' needs which will be realized in the completion of the center: "We've waited so long and we need a place for activities so badly." He pointed to the glaring inadequacy of the "Lynx Lair," a small basement room criss-crossed by overhead pipes which is the "only place on campus to meet your friends or professors over a cup of coffee."—to the scattered makeshift offices for student organizations—to the lack of any facility whatever for student parties—to the pantry-sized bookstore, also in a basement, where students stand in line for hours at book-buying time.

Rhodes Comments

Dr. Rhodes said both the administration and the board of directors will make a major effort to raise funds for the center, which he termed one of the college's most critical needs.

FROSH OFFICERS
Congratulations to the Freshman Class officers elected on Wednesday. President, Bill Griffin; Vice-President, Mickey Code; Secretary-Treasurer, Peggy Pierce; Publications Board, Judy Moody; Student Council Representatives, John Davis, Jeanie Heltzel, and Sally Kindig.

NSF Fellowships Judged For Variety of Abilities

The National Academy of Sciences, National Research Council has been called upon again to advise the National Science Foundation in the selection of candidates for the Foundation's program of regular graduate and postdoctoral fellowships. Committees of outstanding scientists appointed by the Academy-Research Council will evaluate applications of all candidates. Final selection will be made by the Foundation, with awards to be announced on March 15, 1962.

Fellowships will be awarded for study in the mathematical, physical, medical, biological, and engineering sciences; also in anthropology, psychology (excluding clinical psychology), geography, economics (excluding business administration), sociology (not including social work), and the history and philosophy of science. They are open to college seniors, graduate and postdoctoral students, and others with equivalent training and experience. All applicants must be citizens of the United States and will be judged solely on the basis of ability.

Applicants for the graduate awards will be required to take the Graduate Record Examination designed to test scientific aptitude and achievement. This examination,

(Continued on page 4)

The Sou'wester

MEMPHIS, TENNESSEE
ESTABLISHED 1919



Published Weekly by the Students of Southwestern

Susan Hunter, Editor

John Wilkins, Business Manager

Gerald Holter, Managing Editor

Circulation Manager.....Kathy James
Priscilla Strickland, Ann Denny, Pat Dickson

News Editor.....Marilyn Meyers
Judy Moody, Patty Stark, Carol Moore, Dawn Henderson, Jane Adams, Susan Smith,
Steve Bull, Susan Ramseur, Diane McCullough, Nancy Sheffield

Your Student Council.....Margaret Johnson

The Eye and I.....We

Sports.....Staff
Jimmy Kitchen, West Livaudais, Carolyn Cooper, Professor Prognosticator

Our Man Under the Marquee.....Jack Deaver

Photography.....Jack Donelson

Office Manager.....Lynette Humphreys
Marsha Cobb, Marcie Wilson, Bernie McInnis, Susan Allen, Suzanne Hanks,
Peggy Pierce, Bianca Bettis, Nell Buie, Suzanne Shultz, Virginia Lowry,
Queenie Porter, Martha Sinclair, Mary Edith Redus, Janice Baker

Your Student Council

by Margaret Johnson

A hearty welcome to our campus and a sincere wish for a "happy Parents Day" is extended to all of you who are guests of the college by the Student Council of Southwestern. We want to know if there is any way we can help accommodate you while you are here in hopes that you will have a pleasant visit.



The column you are reading is written each week as a report to the Student Body on what their student council is doing and of business transacted at the Tuesday night Student Council meeting. These weekly meetings are open to the entire student body, but this column serves as more or less a publication of the minutes to inform those not present.

Rhodes Addresses Council

President Rhodes attended the meeting October 17 to review with the council the annual report of the president, dean, and treasurer of Southwestern. This report, dated October 1961, is of the fiscal year ended June 30, 1961. It concerns itself not only with the financial area, but also with the curriculum, extra-curricular activities, and personalities of the Southwestern community. Copies, in booklet form, are sent to some 3000 alumni, parents, board members, clergy, and others interested in the college. The book is well worth looking into, because it contains facts and statistics of which many of us are unaware.

Following Dr. Rhodes were commission reports.

"S" Awards Announced

Keith Arman announced that during Student Assembly October 25, Senior jackets will be awarded to outstanding athletes. Tomorrow, Saturday, our undefeated Cross Country team will meet undefeated Union at 2:00. There should be quite a race and your support is asked to spur the boys on.

Social Commissioner, Perry White, announced to applause that the Homecoming Dance, November 4, will be held off campus.

In her Hazing Evaluation Report Margaret Johnson, Commissioner of Undergraduate Women, stated that the main criticism of this year's program was lack of participation. The trend of group rather than individual hazing, and planned events each day was relatively successful, but the question has come up of whether to have a mild hazing as such or one week of almost "ratting." A cross section of student opinion—freshmen and upperclassmen—in the form of written hazing evaluations has provided criticisms of the 1961 program and proposed suggestions for 1962.

Homecoming

Jimmy Finley, president of the Elections Commissions, has set the date for nominations of Homecoming Queen as October 25 in Student Assembly. The final election will be held the following week. Also in the near future will be elections to supplement Junior and Sophomore representation on the council according to the new amendment and by-law.

Next week at the meeting, Commissioner of Social Activities Perry White will present the results of his Social Rules Revising Committee and put the revision to council vote. Your attendance is welcome.

Across The Desk

Category: The Test Of Our Progress

"The test of our progress is not whether we add more to the abundance of those who have much; it is whether we provide enough for those who have too little."
—Franklin D. Roosevelt

To the men and women who come to Southwestern, to their parents, and to the alumni of the college, it is evident that we are constantly adding more to its abundance. Manifested in the beauty of the physical plant, the caliber of the student body, and the scholarship of the faculty members, we realize the surfeit of resources available for our growth.

This fall, the progress of Southwestern cannot be measured in looking backwards over its accomplishments, but by testing its actual provisions. New challenges are presented to a student body numbering over eight hundred; to meet the various demands that are imposed, we have seen progress in recent weeks—progress of provision. Bellingrath Hall now houses 106 additional men students; two buildings are presently under construction to accommodate the needs of an expanded administration and care of the infirm. The Student Council will add to its membership an additional representative from each class, according to the class' enrollment. The Freshman Seminar Program is enlarging its scope to include international relations, and this week imported a world-renowned freedom fighter, Dr. Clarence Streit. It seems, indeed, that we are striving to provide enough for those who have too little.

But our vision cannot be complete in a month's action. We cannot stop testing our progress. A monumental new challenge faces us—on the front page of the paper. Shall we join in securing for the future a Student Center that is desperately needed today? Shall we prove the test of our progress?

S. M. H.

About Campus Dowd, Windham Go On Honor Council

by Diane Lobaugh

In case you're wondering why the campus is suddenly overgrown with grey-topped, middle-aged bipeds, it's 'cause it's Parents' Weekend! Altho' some feel that since weekends only come once every five days, they should be reserved solely for the ivy-covered progeny, I think the benefits of Parents' Weekend may overbalance the deficits. For one thing—the food in the dining hall will show a marked improvement. It will be good enough to cause mater and pater to rave while filius sits by literally eating his words.

Saturday Sr. Bible lecture will be geared to the supposed level of the parents, and we will understand for the first time in four weeks!

We can also take a sadistic delight in the fact that there will be a Chapel Program for Parents, at ten o'clock. Yuk! Yuk! Since attendance is not required, I think it will be interesting to see how many are "Mature" enough to go!

Felicitations to Judy Hollingsworth and Mark Hartzog, who are pinned.

Congratulations to the ATO's for

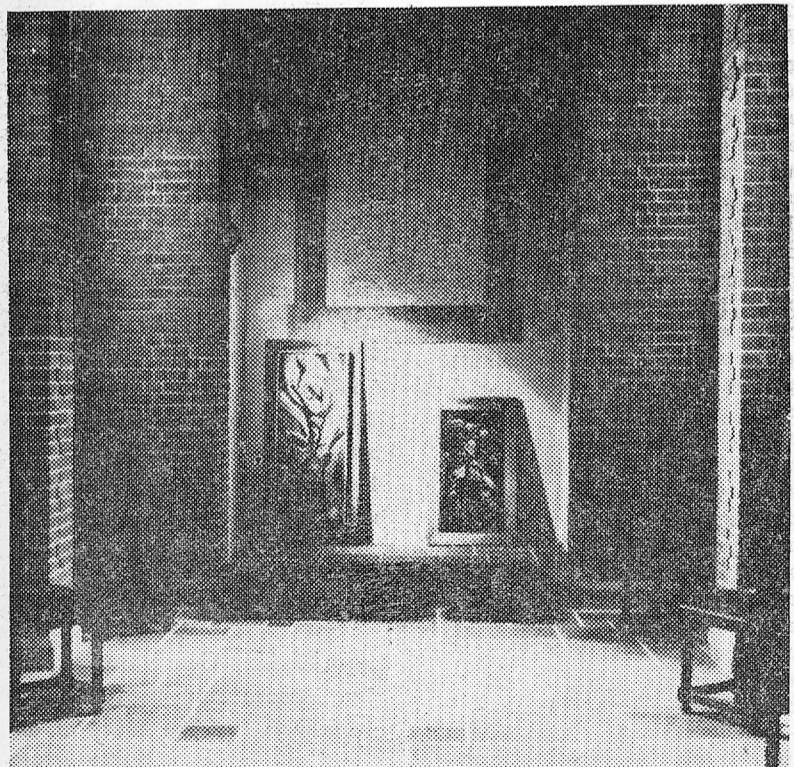
Elected to the Honor Council from the Freshman class last Saturday were Jacquelyn Dowd and Tommy Windham. Both of these students expressed a little apprehension upon first coming to a new environment, but now have no qualms about the college of their choice. They feel that the people reflect the quality of the college, which is top notch.

From Pauls Valley, Oklahoma, Jacquelyn wanted to go to a small liberal arts college with high academic standards. She read about Southwestern, was impressed and decided to apply here. Her decision was made certain when she was awarded a scholarship.

In high school, Jacquelyn was president of the Student Council, a cheerleader for three years, and valedictorian of her senior class. At Southwestern, Jacquelyn is a member of the Independent Women.

Jackson, Mississippi, is Tommy's hometown. He first learned of Southwestern through the efforts of Mrs. John Q. Wolf and Jimmy Curtis. A Baker Scholarship prompted his choice.

President of the senior class at Murrah High School, Tommy was voted "Most Promising Future Citizen." He was also vice-president of the sophomore and junior class.



The Chapel of Bellingrath Hall—Dedicated on Wednesday, Oct. 18, this room is an attractive feature of the new residence hall.

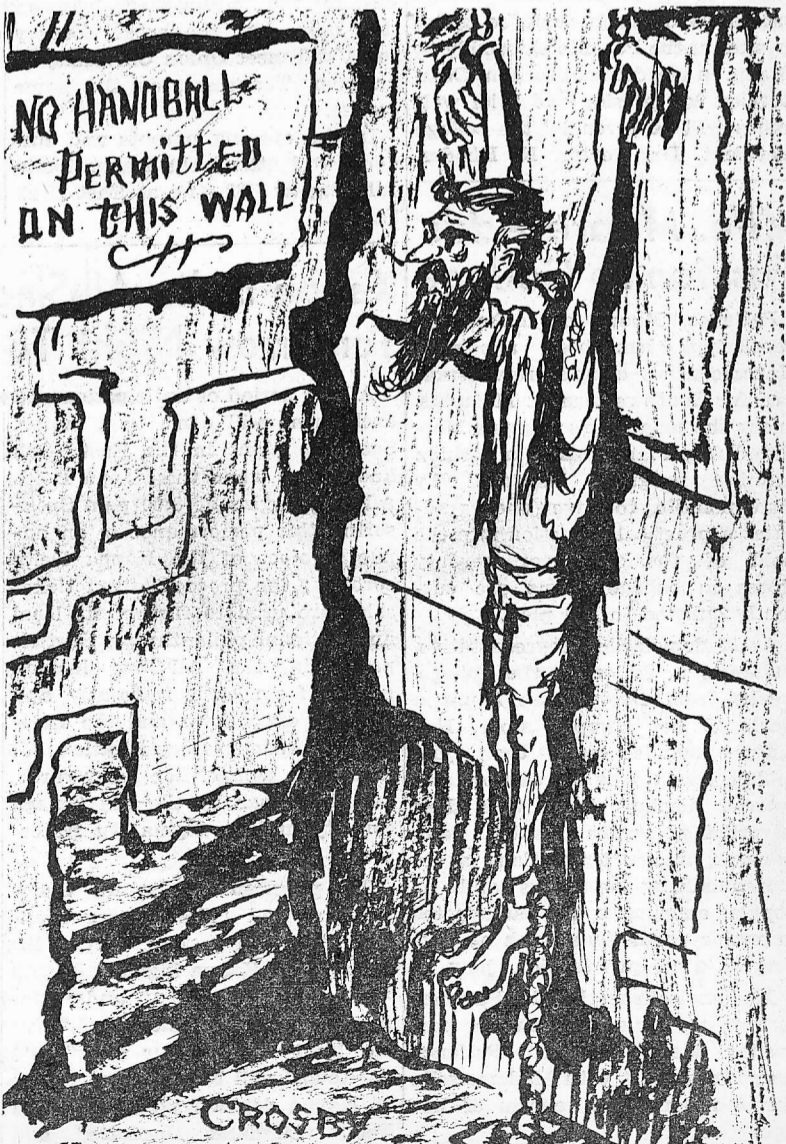
ANNUAL PIX

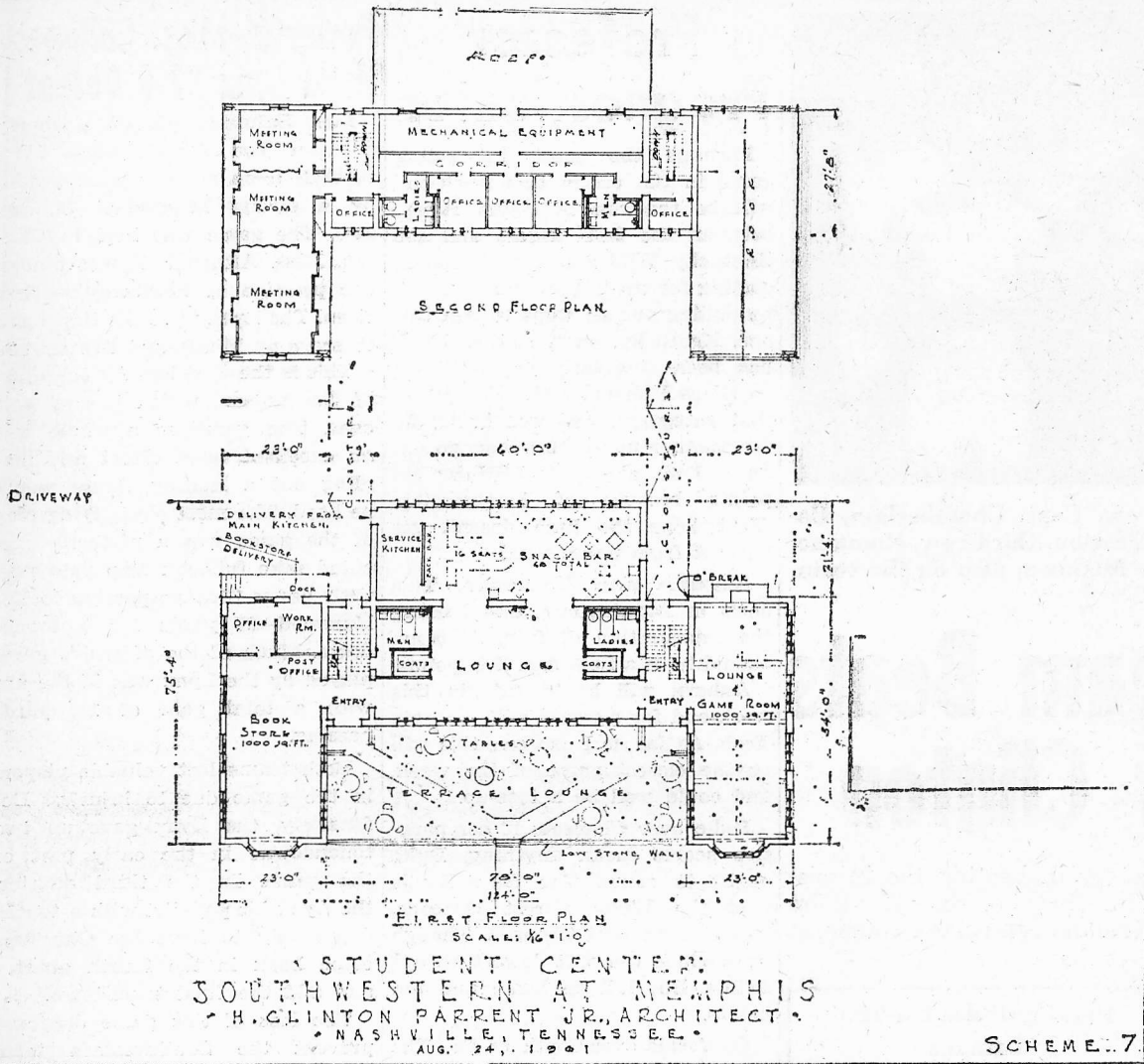
The class pictures for the LYNX are being taken in the basement of Palmer. Students are requested to use the stairs at the east end of Palmer so that the classes in the basement will not be disturbed. Boys are to wear a plain dark coat and tie, and the girls will have a drape.

Freshmen, whose last name starts with "A" through "R," were taken

Thursday, October 19; all sophomores to be on Friday, October 20; juniors and freshmen "S" through "Z" on Monday, October 23; and Seniors on Tuesday, October 24. The hours are from 9:00 to 12:00 and 1:00 to 3:00.

Proofs will be returned one week from the day that the pictures were taken, and orders for individual pictures may be made at that time.





The architect's working plan for the Student Center is pictured above. The main features of the building include the snack bar and grill area, seating 150 students; the commodious book-store, where items will be attractively displayed for the students to serve themselves; a post-office will handle all incoming mail, for students living in the residence halls and in Memphis. Office space is provided for S-W publications, the Student Council, and the Honor Council.

Madrigal Singers Perform Independently This Year

Due to a shift in the duties of several members of Southwestern's music faculty, the Music Department was unable to sponsor or furnish direction for the Madrigal Singers this year. However, because of the group's popularity on campus and their own enjoyment of singing, the Madrigal Singers will function this year as an independent student group under student direction.

For those who do not know, the Madrigal Singers is a small singing group which specializes in madrigals (15th and 16th century part songs), Sacred Harp tunes, and folk music.

The Madrigal Singers have already made their first appearance of the school year as part of the entertainment for the Student Counselor's party for new women students on Sept. 11.

Singers returning from last year are Diane McCullough, Patience Moore, Mary Lou Growden, Lynn Green, Fran Steward, Fred Ford, Perry White, John Mehrling, and Tommy Vanden Bosch. Newcomers to the group are Janet Thomas, Jeanne Gregory, Esther Lorange, Martha Dunmire, Kathi Carlson, David Caudill, Allen McKeever, Charlie Rich, and Bob Maclin.

About Campus

(Continued from Page 2)
a very successful open house last Friday.

Over Parents' Weekend several of the sororities' Mothers' Clubs are giving teas. ZTA's will be at 3 o'clock and XO's at 4 o'clock on Saturday. KD's will be on Friday at 3 o'clock.

Monday night the Sigma Nus, Kappa Alphas, and the SAE's were treated to desserts by the AOP's, the ZTA's and the Tri-Deltas (respectively).

The KD's will celebrate their Founders' Day this Monday with a banquet at the Embers.

Honor Council

(Continued from Page 2)
es, treasurer of the Student Council, and lettered three years in both football and baseball. Elected to the Hall of Fame, Tommy was also a Class Favorite. As for his current activities at Southwestern, Tommy is pledging S.A.E. and plans to play baseball.

Neither Jacquelyn nor Tommy has chosen a major. However, Jacquelyn plans to go to graduate school and is considering teaching, possibly on the college level, as a career. Graduation from Southwestern is Tommy's immediate goal.

J. Y. A.

Since some of our students are interested in a year of study abroad, Dean Jameson M. Jones has announced a meeting for Thursday afternoon, October 26, at 2:00 p.m. in the faculty lounge of Burrow Library. Southwestern professors of modern foreign languages will be present, and the purpose of the meeting will be to answer questions about procedures for undertaking a program of study abroad. It is hoped that students who have engaged in such a program of study in the past will also attend.

Maid of Cotton Contest Coming

Are you a coed, between the ages of 19 and 25, and five feet, five inches tall? Are you unmarried, photogenic? Were you born in one of the nineteen cotton producing states? Do you like to travel?

If your answer to all these questions is yes, you are eligible to represent the American cotton industry on an international fashion and good will tour. Your title—the 1962 Maid of Cotton.

Interestingly enough, twenty-two of the twenty-three maids to date have been coeds or recent college graduates.

The new maid will be chosen from a field of twenty finalists on December 29th at Ellis Auditorium. Among last year's finalists were Martha Barret and Martha Myatt, two Southwestern coeds.

The 1962 Maid will be outfitted with a complete all-cotton wardrobe styled by the nation's top designers. She will tour the United States and Canada extensively and will fly to Europe to visit its top fashion centers.

Interested? For an official entry blank write the National Cotton Council, P. O. Box 9905, Memphis 12, Tenn. Entry blanks must be returned by midnight December 1, 1961.



Following excellent examples set by several Mid-South metropolises, Memphis has roused itself from stultifying slumber and inaugurated a Festival of Arts program which promises plenty of arty activity for music, dance and drama patrons.

The festivities opened this afternoon at Memphis' answer to Hollywood Bowl, Overton Park Shell, with a concert by the Youth Symphony, which included works by Offenbach, Rimsky-Korsakov, and Loewe's "My Fair Lady" score.

Of interest tonight will be six scenes from Shakespeare's "Romeo and Juliet" presented by the Memphis Shakespeare Festival. Directing is Bennett Wood. John Lovelady and David Morelock, to whom Elizabethan lyrics are nothing new, and upcoming young actress Barbara Anderson will play Romeo, Friar Lawrence, and Juliet. It's at 8:30.

Tomorrow night at 7 Memphis Little Theatre will do scenes from "The Third Best Sport", with Sam Sherrill, Sue Roberts, Aileen Taylor, Gene Jackson and Eleanor White participating. At 8, the Beethoven Club will present excerpts from Strauss' "Die Fledermaus" and Mozart's "Don Giovanni." At 9, the Memphis Civic Ballet will toe the mark to music by Vivaldi and Glazounov.

Sunday afternoon at 2 George Touliatos and his Front Street players will do "The Ballet of the Small House of Uncle Thomas" from their recent hit, "The King and I." Memphis Opera Theatre will do excerpts from Smetana's "Bartered Bride" and Leoncavallo's "Pagliacci."

Closing the activities at 4 Sunday afternoon will be the Memphis Symphony Orchestra under conductor and musical director Vincent De Frank. They'll open with a motif from Wagner's "Lohengrin" and close with Sibelius' "Finlandia," and in between will be bits from Brahms, Ravel, Gould, Strauss, Prokofiev, and Mussorgsky's "Night on Bald Mountain."

The Festival of Arts offers ample opportunities for beaux artes devotees, and should certainly be patronized by Southwestern students. For those who already enjoy music, ballet and drama, it should afford a real treat. For those who do not, it might serve as a needed introduction.

An exhibition-sale of paintings, sculptures, drawings, prints, photographs and crafts by local artists will be featured.

Admission to the events is 25 cents. Proceeds will be used for the completion of the Memphis Arts Center in Overton Park, which will include an addition to the Arts Academy containing an auditorium and other facilities for the performing arts organizations.

Why not stop by, look, and listen? It'll be well worth your time.

The "Grass" Menagerie

Two potent personalities debut in Elia Kazan's "Splendor in the Grass," a film which packs a cinematic wallop.

The newcomers are Warren Beatty, who stars with Vivien Leigh in the upcoming "Roman Spring of Mrs. Stone," based on Tennessee Williams' only novel, and Barbara Loder, whose unusual physiognomy marks her for offbeat roles.

William Inge, who did the origi-

nal screenplay, delves more into the twisted recesses of his characters' minds in "Grass" than in his plays "Bus Stop" and "Picnic." He evidently brushed up on his Freud before writing this one.

Beatty plays Bud Stamper, high school hero and all-round Joe; Natalie Wood shows startling professional improvement as Wilma Dean Loomis, his pretty girlfriend. They have the same problems that every other young couple has: isolated spot, parked car, emotions, and consciences. 'Tis painfully familiar.

And afterwards her mother says, "What were you and Bud doing together all this time, for Heaven's sake?" And his father says, "Bud, there are two kinds of girls..." Sound familiar, folks?

So they decide not to see each other again. Bud goes off to Yale Wilma Dean suffers a breakdown and goes off to an institution. Two years later they meet.

(Continued on Page 4)

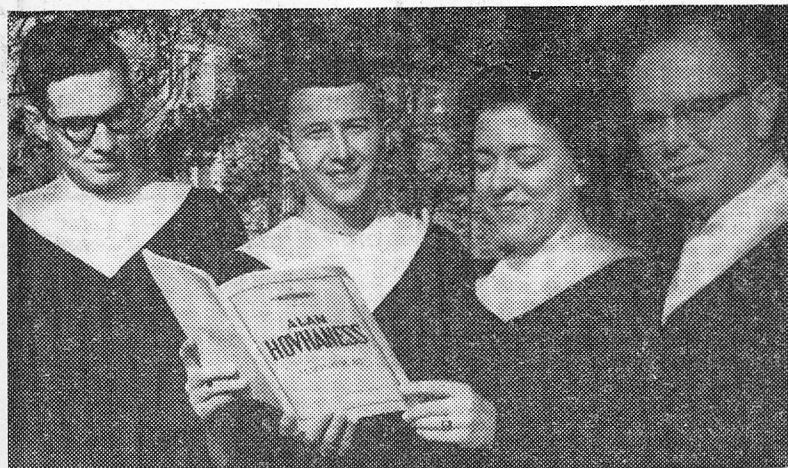
Get with it, man! You belong in the indispensable **WEATHER CHECKER**



Whether the weather is balmy or biting, you're ready with Weather Checker, knockout new H-I-S style with zip-out Orlon pile lining. 40" long - it has a Bal Collar, raglan shoulders, slash pockets, center vent, sleeve tabs. In washable fabrics—at stores that are "with it". \$25.

h.i.s.
SPORTSWEAR

Don't envy H-I-S... wear them



MR. MCGINNIS, Fred Ford, Diane McCullough and Dr. Taylor, director, are shown wearing the new stoles purchased for the Southwestern Singers last summer. Dr. Vernon Taylor announces that the Bartok "Folk Songs" and the Hovhaness "Magnificent" are to become new repertory numbers for the Singers this year.

GUILD ART THEATRE

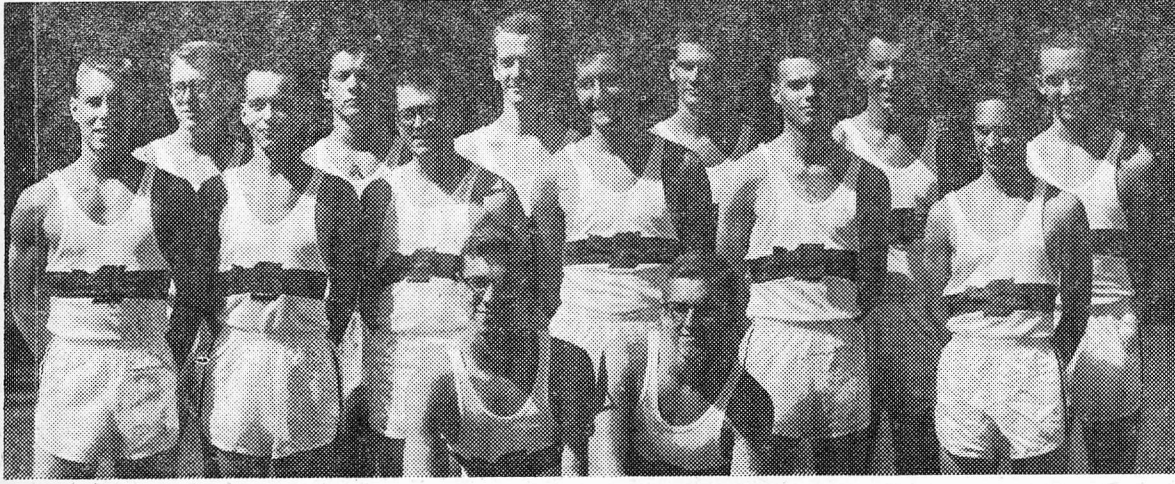
1705 Poplar

BR 4-6406

BRIGITTE BARDOT

in

"THE TRUTH"



SOUTHWESTERN'S CROSS COUNTRY TEAM, l. to r. front row, Capt. Chamberlain, Co-Capt. Arman, second row, Fall, Cooper, Ringold, Doyle, Selvidge, Deaton, third row, Romaine, Crosby, Foster, Hankins, Poolman, Couch. Not pictured is Jimmy McCown, also on the team. Fall and Hankins have been sidelined because of injuries.

Lynx Cross Country Team Beats Mississippi Harriers At Clinton

Last Saturday, the Lynx Harriers won their fifth straight victory in beating the Mississippi College team by a score of 25-34. This is the first time in six years that the Lynx team has beaten the Mississippi Harriers both here and away, on the hill-ridden course at Clinton, Mississippi.

This Saturday, October 21, the Lynx Harriers will meet with Union College. Though the season so far is a winning one, the toughest part is yet to come. Union is favored in the meet Saturday but with everyone's support, the Lynx Harriers could pull an upset. The main strength of the team is its depth. So far there has been a personal duel for the first five places on the team with Chamberlin and Arman contesting for first and second. Following respectively are Couch and Foster for third and fourth place, while Deaton, Cooper, Romaine, and Selvidge are fighting for fifth place.

The team as a whole will not only be contesting for victory over Union, but will be trying to qualify to go to the NCAA meet to be held on November 18, in Wheaton, Illinois. To do this, they must run the four mile course in less than twenty-four minutes. In the contest itself, there will be a personal rivalry between Chamberlin and Arman from Southwestern against Ed Wlton and Mike Palmer from Union.

Also this Saturday there will be a high school meet just preceding the Southwestern-Union meet. The high school meet will begin at 1:30 with the Lynx meet to follow at 2:00 p.m.

The schedule for the remainder of the season is as follows:

October 27—Mississippi State and Memphis State in triple meet.

October 31—Union at Union.

November 3—Union Invitational.

November 11—Mississippi State at Mississippi State.

November 18—NCAA Meet at Wheaton, Illinois.

Marquee

(Continued from Page 3)

He is married, she is engaged. They look at one another, and all they can do is laugh nervously, wanting to say so many things, with the words "if only" lingering on their lips.

That's where the title comes in. It's from William Wordsworth's "Ode on Intimations of Immortality."

*The nothing can bring back the hour
Of splendor in the grass,
Glory in the flower,
We will grieve not, rather find
Strength in what remains behind.*

Although one sometimes wonders if Inge hasn't changed Wordsworth's words to "Aid on Imitation of Immortality," the film is well acted and directed.

Actress Loder plays Beatty's playgirl sister, who gets finished at finishing school, universalized at the university, and artfied at art school. A definite refugee from the



At least one of the predicted "dark horses" showed that they were just that. ATO came from behind to tie powerful SAE 24-24. It was the most exciting game of the season that this reporter has yet viewed. The game was rough and tumble all the way, with neither squad giving an inch to the other. The game was, to say the least, an upset to the Lions, whose long unbeaten, untied record was ruined.

In another game, Sigma Nu surprised ATO 42-24. The Tau's were not in good shape for this first game, the SN's were. There was no doubt after the half that it was a victory for the Nus. The ATO's fought back hard, but to no avail.

This leaves SAE with a 1-0-1 record, Sigma Nu with a 1-0-0, ATO 0-1-1, PiKA 0-1-0, Independents 0-0-2, Kappa Sig, 1-0-0, and KA with an unknown record. It looks like the most interesting flagball season in years.

One thing for sure, Sigma Nu will be out to beat SAE, their jinx, and the Lions will be trying to maintain that jinx.

misplaced persons bureau, her scenes are high spots of the film.

But the one to watch is Warren Beatty; he's on his way up, a la Ross Pritchard.

Not at all crass, this "Grass" menagerie is a provocative film because every teenager who sees it will doubtlessly see himself somewhere in it. If drama's goal, as Shakespeare says, is "to hold, as it were, the mirror up to nature," then Kazan has triumphed. "Splendor is the Grass" does just that, and does it well.

Ye Shall Know "The Truth"
"Judge not the crime, but rather the human being who committed the crime." With this Raskolnikovish remark, Director Henri-Georges Clouzot introduces his laurel-loaded film, "The Truth," which makes the viewer wonder if Dostoevsky himself didn't do the "crime and punishment" screenplay.

"The Truth" opened Wednesday at the Guild to an enthusiastic audience that ranged from leather-jacketed Memphis cyclists to pseudo-sophisticates to bearded college professors.

Brigitte Bardot busts—pardon, bursts—forth on the screen like a vociferous volcano and displays,

Parking Rules On The Campus

Southwestern At Memphis

1. No parking or standing in yellow zones.
2. No parking or standing in fire lanes.
3. No parking or standing in restricted areas.
4. No parking or driving on grass, day or night.

**These Rules Are Enforced!
Please cooperate by using parking areas provided.
Thank you!**

along with her other ample, evident attributes, the germs of acting ability. Though she's been bounding about since "God Created Woman," she has never previously approached the professionalism of her performance in "La Verite."

Bardot plays Dominique Marceau, a murderess, and when she takes the witness stand, she tells a story that would shock a "tee-hee-hee" out of John Henry Davis.

It's the story of a beautiful, bored Bohemian who finds happiness of a sort with her own kind on Paris' Left Bank, until she falls—and falls hard—for her violin-playing sister's beau.

Infatuated with Bardot, the young man tries to tame the tainted tigress, but it's a hopeless task. Even the judge at the trial is scandalously shocked by Brigitte's behavior: "Three or four movies a week! Such dissipation!"

When the young man, a budding conductor, realizes the futility of his ardent attempts at reforming Bardot, he leaves her, but not for long. She sees him on television, conducting Tschaikovsky's "Romeo and Juliet" and rushes to his apartment with the climactic cymbal-crashes of the ballet blaring in the background. It's a successful fusion of graphic image and classical music in a scene that might have become farcical if directed by a less expert hand than Clouzot's.

But when she's again spurned, Bardot goes beau-visiting with a pistol packed 'neath the folds of her trenchcoat, and she uses it. When her sincere suicide attempt fails, she's brought to trial, but that's where we came in.

Before we go out there's a finish that is unexpected, yet logical. Bardot's last scene is artfully acted; it has won for her two international awards.

"The Truth" is not just another scandalous sequence in the series

Professor Prognosticator

Perhaps the most interesting game in the offing this week-end will be the one at Baton Rouge between the LSU Tigers and the Kentucky Wildcats. This is homecoming for the Tigers and LSU will be pulling out all stops to win this one. Kentucky, on the other hand, has been singularly unpredictable (perhaps I should add Arkansas to that category), and will be trying for another upset. However, go out on a limb and pick LSU by six points because of homecoming. (Just hope the limb doesn't get cut out from under you.)

Alabama over Tennessee. This one's in Birmingham, and barring the intervention of fate, Alabama should have a field day. Ten points.

Auburn will be in Atlanta this week-end for a tussle with Georgia Tech. As far as I can see, this will be the closest game of the week, and could well be a toss-up.

Duke over Clemson. If comparative scores mean anything, Duke ought to romp. The Blue Devils beat the Wake Forest Deacons, who in turn beat Clemson. Though the logic is there, it doesn't always follow. But it'll be Duke and ten points.

California over Southern Cal. The Golden Bears beat tough Washington last week, and should do the same for Southern Cal. Six points.

Florida State over Richmond. A breather.

Pick Miss. State over Georgia. Schedule favors State. They had an easy game last week, while Georgia had a tough time keeping the score with Fla. St. to 3-0 in the Seminoles' favor.

Missouri over Iowa State. This isn't going to be a pushover, but it also should help to increase the big Mo's standing in the NCAA. Six to ten points.

Maryland over Air Force. Everybody else has been beating the tar out of the Falcons, and there is no good reason why Maryland should feel wont not to do so. They have the men to do it with, too. Seven points.

Anyone who would care to predict the outcome of the Arkansas-Texas game may do so. I won't. Arkansas is too unpredictable, plus the Razorbacks have a thirteen game winning streak going for them in Texas, and there is just no stopping Lance Alworth. On the other hand, Texas looks stronger than last year, Arkansas doesn't, despite their performance in the last two games, and the Longhorns are rated third in the nation on AP. Your guess is as good as any-

Fellowship

(Continued from page 1)
administered by the Educational Testing Service, will be given on January 20, 1962, at designated centers throughout the United States and certain foreign countries.

The annual stipends for graduate Fellows are as follows: \$1800 for the first year; \$2000 for the intermediate year; and \$2200 for the terminal year. The annual stipend for postdoctoral Fellows is \$5000. Limited allowances will also be provided to apply toward tuition, laboratory fees, and travel.

Further information and application materials may be obtained from the Fellowship Office, National Academy of Sciences, National Research Council, 2101 Constitution Avenue, N.W., Washington 25, D. C. The deadline for the receipt of applications for regular postdoctoral fellowships is December 18, 1961, and for graduate fellowships, January 5, 1962.

of Bardot "B" Pictures. It deserves an "A" for Acting. Combining Mille. Bardot and M. Clouzot's considerable talents, this French film with English subtitles deserves the laurels with which it has been crowned.

Powerful Miss. College Hand Lynx 22-6 Defeat

Last Saturday proved a cloudy day for the Southwestern Lynx football team as they were beaten by a strong Mississippi College, 22-6. The game was held in Clinton, Miss. Although it was a loss, the prestige of Southwestern has risen. The Lynx were the first team to score on Mississippi this season.

This is the first loss for the Lynx of this season, which is now half over. The game as a whole was an excellent team effort and singling out a leading figure would be hard. The most electrifying play of the game was a perfectly executed fake fullback trap pass play with Vance Strange passing to Bill Harwood—67 yards for a touchdown. Much of the offensive game played by the Lynx was in the air, with a total gain of 145 yards passing.

Both teams lost valuable players in the game due to injuries. Defensively, the Lynx gave up two touchdowns in the early part of the game. In the third quarter, the Lynx hit pay-dirt with a touchdown only to have the Choctaws come back in the fourth quarter and add the final touchdown.

The loss of this game does not prevent the Southwestern team from having a winning season. There are still four games ahead which should prove interesting. It has been said that, even with this loss, the team stands to have one of the best seasons it has had in several years.

body's. Use your heart instead of trying to figure the probabilities, and cheer for your own preference.

Ohio State over Northwestern. Six points.

Michigan over Purdue. The Wolverines should retrieve their losses from last week and get back into the fray. Three to seven points.

Minnesota over Illinois. Easy game.

Michigan State over Notre Dame. Riding on the crest of their victory over Michigan last week, the Spartans should prove their endurance. Six points.

Ole Miss over Tulane. If Ole Miss beats Tulane significantly, they should take Alabama in the Sugar Bowl, Jan. 1. Ten points.

TCU over Texas A&M. Three points. The Aggies could pull an upset.

Memphis State over Abilene Christian. Many, many points for State.

Pick old favorite **Slippery Rock** over California State. No one cares who wins as long as it's Slippery Rock. 102 points.

**Coletta's
TUXEDO SHOP
FA 3-8787
616 South Highland**

**Southwestern Pharmacy
T. A. Turner, R. Ph.
Tutwiler at McLean Blvd.
Phone BR 2-7500**

*man like we've got 'em—
hundreds and hundreds
of far out paperbacks*

THE UNICORN

118 Union

JA 6-4336

9 to 9 Weekdays

Sunday Afternoons