



THE NEW FRESHMAN OFFICERS, apparently suffering delusions after their respective victories, are (reclining) President Ronnie Colter, (standing l. to r.) Senator Dale Worsley, male SAU Representative Larry Parsons, Secretary-Treasurer Pedie Pedersen, Senator Gregg Charbonnet, female SAU Representative Rosemary Wood, Vice-President John Purvis, and Senator Mary Ann Bryan. Senator Debbie Sale, Historian Susie Snider, and Publications Representative Neva Gibson are not pictured because they were unable to participate in the frolic.

# Frosh Select Colter, Purvis; Four Named To Serve In Senate

Eleven freshman class offices were filled as a result of the Oct. 14 freshman elections. The new officers are: President, Ronny Colter; Vice-President, John Purvis; Secretary-Treasurer, Pedie Pedersen; Senators, Mary Ann Bryan, Gregg Charbonnet, Debbie Sale, and Dale Worsley; Historian, Susie Snider; SAU Representatives, Larry Parsons and Rosemary Wood; and Publications Representative, Neva Gibson. Swearing in ceremonies into the Senate were held Tuesday for the President and Senators.

President Ronny Colter, a Baker Scholar, pledged Sigma Nu fraternity and was elected president of his pledge class. Having attended a Memphis high school, Ronny served as Student Council president and vice-president and senior director of his Key Club.

John Purvis, vice-president, became president of his pledge class after pledging SAE fraternity. He was in Mu Alpha Theta, Medi-

Coeds, and a delegate to Youth Congress from his high school in Jackson, Mississippi. At Southwestern he is taking courses on a pre-med program.

Pedie Pedersen, secretary-treasurer, is president of the Kappa Delta sorority pledge class and serves on the Dilemma staff at Southwestern. She comes from McKenzie, Tennessee, where in high school she was a Beta Club officer, served on the Student Council, co-editor of the annual, a Science Club officer, an Arion Award winner in the band, and a delegate and counselor to Girls' State.

Senator Mary Ann Bryan, a Chi Omega pledge, is from Memphis. Her high school activities included the vice-presidency of the Student Council, chairman of the school talent show, and Commissioner of Social Activities.

Gregg Charbonnet, senator, graduated from Benjamin Franklin High School, an advanced high school in his hometown of New Orleans, Louisiana. At Southwestern as a National Merit Scholar, he is a Sigma Nu pledge, on the Student Welfare Commission, on the financial staff of Dilemma, At Southwestern Senator Debbie Sale is a pledge of Delta Delta Delta Sorority, on the Freshman Orientation Committee, working with Dilemma, and participating in All-Sing. Debbie was a Miss Teenage America finalist in 1966.

Dale Worsley, the fourth senator, is a Baker Scholar and serves as secretary of the ATO pledge class and a reporter for "The Sou'wester." In his high school in Baton Rouge, Louisiana, he was editor of the newspaper, art editor of the yearbook, a Mu Alpha Theta officer,

Susie Snider, historian, is president of the Chi Omega sorority pledge class. She was historian of

her high school, secretary of Mu Alpha Theta, in National Honor Society, and a member of Ro Anno, sponsored by the Rotary Club. Scholastically, she distinguished herself by being a National Merit finalist.

Freshman girl SAU Representative Rosemary Wood was elected president of the Alpha Omicron Pi pledge class and serves on the Dilemma Registration Committee. In her high school in Nashville, Tennessee, she was a Student Council member-at-large and Beta Club president.

Larry Parsons, male SAU Representative, is a member of the Lynx football team. His hometown is Pompano Beach, Florida, but he attended Nova High School in Fort Lauderdale where he was a member of the football and basketball teams. He pledged KA.

Neva Gibson, Publications Representative, comes to Southwestern from Forrest City, Arkansas. She is a pledge in Kappa Delta sorority. High school activities for Neva included being editor of the newspaper, treasurer of National Honor Society,

## KD All-Sing Will Feature Variety Of Songs, Staging



LYNX LOVELY . . . Miss Pat Black, of Brookhaven, Mississippi, takes time out for a drink at Overton Park. Pat is a junior Psychology major at Southwestern. She represents her class in the S.G.A. as a senator, and serves as Marshall of her sorority.

Kappa Delta's annual All-Sing will be held Saturday night at 8:00 in the Snowden Junior High Auditorium. Admission will be 75c for students, \$1.00 for adults, and proceeds will go to the Crippled Children's Hospital in Richmond, Virginia.

This year's judges will be Mrs. David R. Weaver, singer on the television program "Good Morning From Memphis", and Richard T. White and Billy Christian, music directors of St. John's Episcopal and Idlewild Presbyterian churches, respectively.

More unusual costuming and singing styles are predicted to make the 1966 All-Sing one of the best ever.

This year's songs, and the order in which the sororities and fraternities will sing them, are:

Delta Delta Delta: "Tale of the Pigtail", "Dona Nobis Pacem", and "Al DiLa"; Sigma Nu: "Shenendoah", and "When Johnny Comes Marching Home"; Kappa Sigmas are singing a medley of the "Gay Nineties"; Alpha Omicron Pi: "Round and Round", and "In the Still of the Night"; ATO: "The Sweetheart Tree", and "Who Will Buy"; Pi Kappa Alpha: "The Girl from Ipanema", and "I Wish You Love"; Chi O: "God Bless America", "Give Me Your Tired, Your Poor", and "This Is My Country"; Kappa Alpha: "Battle Hymn of the Republic" and "Dixie"; Zeta Tau Alpha: "Early

One Morning", "City Rain", and "Ash Grove"; and Sigma Alpha Epsilon with: "Somewhere My Love," and "The Shadow of Your Smile".

### Republicans Win

## Lester, Lurleen, Last In Election

In the multi-candidated mock election held last week, Southwesterners expressed their multi-colored opinion by casting votes in selected political contests of this fall. When the votes were counted, Governors of Arkansas, Tennessee, Alabama, and Georgia were selected, along with a Tennessee Senator and Shelby County Congressman.

In the Arkansas gubernatorial race Republican Winthrop Rockefeller defeated Democrat Jim Johnson by a score of 357 to 36.

Democrat Buford Ellington collected 171 votes favoring his election as Governor of Tennessee, but was opposed by 182 votes.

In Alabama's gubernatorial tilt Republican Congressman Jim Martin polled 278 votes to Lurleen Wallace's paltry 86.

Republican Bo Callaway took the Georgia governor's chair over Segregationist Lester Maddox by a vote of 242-60.

Students chose Republican Ho-

ward Baker rather than Democrat Frank Clement in the Tennessee Senatorial contest 280-107.

In the Tennessee Congressional battle Republican Dan Kuykendall eked out a win over incumbent Democrat George Grider, 188-177.

In answer to the question "Who would you like to see elected President in 1968?", Southwesterners gave the nod to resurgent Republican Richard Nixon. Mr. Nixon led with 70 votes, Robert Kennedy polled 63 votes, George Romney 47, LBJ 36. Others mentioned were Bill Scranton, George Wallace, Barry Goldwater, Everett Dirksen, Margaret Chase Smith, Motherhood, and Art Klein.



Mr. Andrew H. Berding

### Retired Diplomat And Noted Author To Speak Tuesday

Mr. Andrew H. Berding, the seventh speaker in the Free World Issues series, will address the faculty and student body as the convocation speaker next Tuesday.

Mr. Berding is author of the book, "Foreign Affairs and You" and holds a B.A. from Xavier University and B.A. and M.A. from Oxford. While at Oxford, he paid his expenses by working for Associated Press. From 1933-37 he was chief of Associated Press in Rome. During the war he served with the U. S. Army Air Force and was assigned to intelligence work overseas. His distinguished service as Chief of Counterintelligence in Italy and later, in Germany, earned him the rank of lieutenant colonel and several decorations including the Legion of Merit.

### Senatorial Hopeful Howard Baker Jr. Appears In Hardie

Howard H. Baker, Jr., the Republican contender for the U.S. Senate seat from Tennessee was on campus yesterday for a brief address. Running in opposition to Tennessee Governor Frank G. Clement, Baker is making his second attempt in as many years to put a Republican from this state in the Senate.

The Knoxville and Huntsville attorney, even in narrowly losing to Democrat Ross Bass in the Senatorial contest in 1964, ran ahead of all Republicans in the state and even topped the Eisenhower vote when the GOP carried Tennessee in the presidential election. In August 1966, he won the Republican nomination for the Senate with 78 per cent of the vote.

In his address, candidate Baker dwelled on the function of the two party system, and his own chances in the coming elections.

## Religious Emphasis Week Currie Expands "We" Idea

"The Claims of Christ and My Life Today" was brought to a close by Dr. Stuart Currie with the conclusion that, for Christians, "We" includes all humanity.

Speaking Wednesday before a less than packed Evergreen church, Dr. Currie ended the deliberations begun on Monday the seventeenth under the heading, "Son of Man — and My Fellow Men." On that day, the substance of his address was to posit the question, "What valid claims can be made on me that I must help my fellow man?"

The second lecture of the series brought up the ancient question, "What do you do when you come to the crossroads of conflicting obligations?" The legitimacy of justice as illustrated in the Oresteian trilogy and The Antigone was discussed. Dr. Currie warned that "those committed to justice bet-

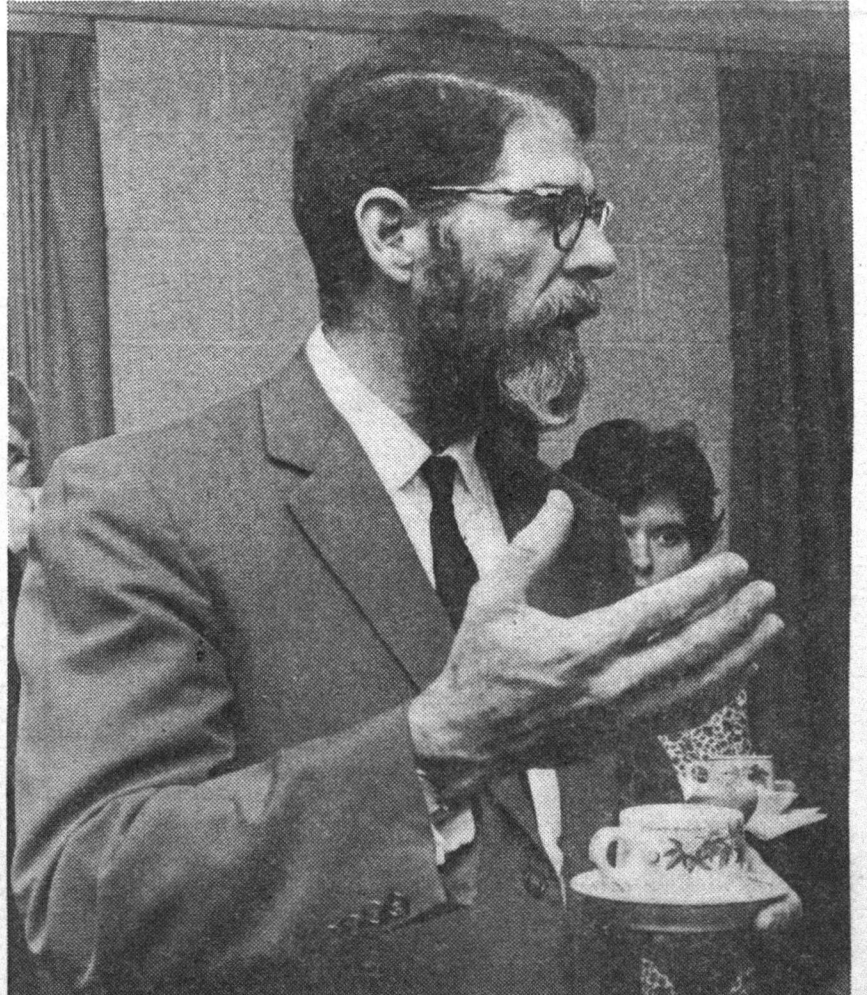
ter have an inassailable position." He examined the conflict between "Just" and "Powerful" and pointed to the frequency with which humanity has adhered to Pascal's advice: "If you cannot make the Just the Powerful, then run to the Powerful and make it Just."

In Wednesday's final lecture, "Lord and My Shrinking Planet," the speaker noted the various forms of human solidarity: unity out of fear; unity out of the desire for honest living; unity to serve Christ.

Alpha Tau Chapter of Alpha Tau Omega Fraternity cordially invites the faculty and student body to its annual Derby Day Open House. Music will be provided by the Chantells; free juke.

Dr. Currie held that the self-conceptions of Christians—that they are heralds, commandos, pilgrims, or the third race—are inadequate, for they cause Christians to speak in terms of "Us" and "Them." To conclude, he affirmed that Christians must enlarge the "We," the brotherhood, so to speak, to include all humanity.

With his informal, expressive delivery, his vernacular quotations from the Bible ("Some of the disciples began to be teed off . . ."), and his high quality, but discreet scholarship, Dr. Currie received an unusual amount of attention during the lectures. Coffees and informal discussions were well attended. Certainly, there was rapport between students and this young theologian who treats religion in a modern light, with current, but ever reverent, language.



DR. STUART CURRIE chats with students in Evergreen Church at a coffee held for students and faculty members who went to meet personally Dr. Currie and to ask him questions.



## Editorial—

## Mad About Mud

The student of Southwestern cannot look from his window or walk to his classes without taking note of the marvelous architecture of his school. It is magnificent. Through the determined efforts of a few men and the generous donations of scores, our college has maintained its standard of excellence in terms of structural homogeneity and beauty. But a flaw exists, and only recently it has become too obvious to be ignored.

Anyone who has either had Accounting under Dr. Hon, had experience in free enterprise or read the annual President's Report from the Tower will realize that the shacks are a necessity for a while yet. It is also apparent that much-needed facilities for convocations, student housing, and classes are expensive and still out of reach financially. But within our reach is one very simple but very important item: adequate sidewalks.

The devotion of a full corner of the campus newspaper to a subject as mundane as sidewalks may seem a reckless waste to some, but to those who fight the problem every day of the week, it is far more serious and certainly a matter for more than "pedestrian" concern. It is expensive, troublesome and embarrassing to many students. Expensive in terms of cleaning bills for shoes and clothes, troublesome in terms of simple migration from class to class, and embarrassing

when visitors get mired up or when you must go to class looking like a dirt dobber. All praise of the Briggs Student Center must halt at the periphery, and on rainy days it is best admired from afar.

Believing that no criticism should be issued devoid of a positive suggestion, we have some remedies to throw out.

Most construction companies provide sidewalk shelters when they temporarily invade city streets. Southwestern is giving several million dollars to the gang of builders now occupying the famous hole, and surely it earns us a favor in the form of high, dry, temporary walkways circumventing the quagmire they will perpetuate for sixteen months. Probably all it requires is a polite suggestion from an officer of the College.

If no co-operation is forthcoming from the construction crew, we will simply have to find room in the budget for a little bulldozing and some gravel. Winter is coming on and muddy situations only get worse as the snow draws nearer.

Plans may already be in effect to ameliorate this mess, in which case we waste our space (though it would still be a question why nothing was done this week when the problem was so acute). If not, it is fervently requested that someone, somewhere, stop passing the buck and eliminate that Muck!

Anyway, it is gray outside. Thinking has become necessary to be aware of your existence. Then, subtly, your existence itself takes on gray, hazy tones. To what avail are these questions? You do not know. And yet, you recognize their insistence, sense their importance. Soon, maybe, you will realize their inherent hues; you will learn to sort the black and white from the gray. For if we are incapable of answers, it could be that it is our questions that we should examine.

"Always the more beautiful answer, who asks the more beautiful question."—e. e. cummings

## Dilemma '67

## Famous Biologist Scheduled to Talk

Dr. Garrett Hardin, "in an age and in a discipline which cultivate specialization, . . . has consistently cultivated the broad view, and has succeeded in transcending many of the artificial boundaries of academic scholarship without sacrificing intellectual rigor or precision. His books . . . are widely accepted in the scientific world as the strongest available proof that important intellectual contributions can be made in biology outside the usual experimental contacts."

Garrett Hardin received his A.B. in zoology from the University of Chicago, and his Ph.D. from Stanford. He has been a member of the staffs of Carnegie Institute of Washington, the California Institute of Technology, and is presently engaged as the Professor of Biology at the University of California, Santa Barbara.

A noted lecturer, Dr. Hardin has held the positions of All-University Faculty Lecturer at the University of California, San Diego, and Faculty Research Lecturer for the Santa Barbara Campus. In 1966, the position of Fellow Research Lecturer, University of California, was bestowed upon him.

In addition to being a lecturer of repute, Dr. Hardin is also a well-known author. His book, *Nature and Man's Fate*, is one of the best introductions ever written to the problems of evolution. The two terms of its title suggest a major theme of Dr. Hardin's most characteristic recent work: the inseparable connection between the scientist's intellectual obligations as an observer and interpreter of natural phenomena and his ethical and social obligations as a member of a precariously situated species.

Dr. Hardin has taken a deep look into man's meaning and role in life and his importance as a human being, and his work successfully transcends the boundaries between the sciences and humanities, thus bringing to light a deeper and fuller understanding about man and his place in a changing world. We feel that Dr. Hardin has much to offer on the topic "Man—His Identity in a Changing World" and it is with great pleasure that Southwestern welcomes Dr. Garrett Hardin to Dilemma '67.



## Art and Symphony

By Kenneth Phelps

Last week this column was devoted to presenting something of the nature of *Dramatis Personnae*. Having accomplished this to some degree, the first impressions of a person who has experience both with the student body and with the dramatic arts, would prove informative and interesting. This person is Professor Hill. The dialogue that follows gives the first impressions of Professor Hill:

**Kenneth J. Phelps:** Professor Hill, are you pleased with the change in the dramatic arts begun by the *Dramatis Personnae*?

**Professor Hill:** Well, I am pleased with the interest shown but I have mixed feelings about the change as such. I do not doubt the sincerity of those who instigated this movement. However, I hope that the plays presented will be more than purely entertaining.

**KJP:** Sir, then, what is the purpose of the plays presented here?

**PH:** I believe that the function of plays produced on a small college campus should be to present plays: a) geared to the "theater's consciousness" of the audience, b) challenging to actors and audience and also, c) entertaining.

**KJP:** Seemingly the biggest problem with the dramatic arts has been the lack of student participation. How in your past experience has this been evidenced?

**PH:** When I came here fifteen years ago, I had fifty students out

of five hundred show for audition for parts; this year there were fourteen out of a thousand. There has been for the past years a "core" of students playing all the parts and single-handedly producing plays. These two statements of fact exemplify something basic in the student body. So many students are afraid of making a mistake, afraid of taking a chance, and afraid of being made a fool of. Obviously this feeling does not promote students to stand and speak before an audience. I feel that this is why, to a great extent, the student participation has not been what it could have been.

**KJP:** If the new dramatic movements fails here on campus, what

will happen to dramatic arts here?

**PH:** Because I am interested in drama and there are also others interested, I'll keep on producing plays even if there is no one to see them and even if I have to bring people from off campus to produce them.

## Medea

Euripides' *Medea* will be presented by *Dramatis Personnae* on Oct. 25 & 26 in Hardie Auditorium.

The members of the cast:

Medea—Susan Storer  
Jason—John Kinnaird  
Creon—John Zachary  
Aegeus—Bick Johnson  
Messenger—Coby Smith  
Nurse—Mrs. Gorden Ruffin  
Tudor—Julius Allen  
Women of Corinth—Kathy Tal-ent, Terry Wilkinson  
Children—Amy Antony, Heidi Owens

This play is produced in a realistic vein, namely to avoid the stuffiness that is normally associated with the classical theater. This production was made possible by the strength of Susan Storer as an actress and an excellent individual performance should be in store.

## Southwestern Women

by Carol Ann Colclough  
Lou Anne Crawford

It is gray outside—nothing more or less. It is not black, nor is it white bright. It is one of those afternoons when radios and record players hum unheard. It is one of those afternoons when you wonder about everything, and anything—yet your mind will not hold any particular thought.

It must be about the second month of school, for these are the signs. You feel alone. Surely, if you are unable to reach out to the world, the world must be unable to find you. And yet you recognize this feeling as described by persons other than yourself. Perhaps you are not as alone, as different, as unique as you have supposed. Then, just what is it that makes you feel this way? Nothing is really wrong; your concerns are no more outstanding than the next girl's. But, possibly, neither are your accomplishments; and it could be that herein lies the catch.

Gray days are for contemplation. The sun is not bright enough to induce immediate cheer, nor is the atmosphere dreary enough to cause gloom. Thinking becomes necessary to be aware of your existence. As your existence is college-centered, thinking is naturally a questioning process. This is what, to date, you have been taught. Answers are not the goal: the ability to interrogate intelligently, and to handle this technique, seem to be the primary concerns. It appears that there are no answers; and, indeed, much of the educational process enforces this belief. Confusion results—is this any wonder?

Gray days diffuse confusion, for they shadow everything. And your mind wanders. . . . Why am I just sitting here? Heaven knows I've plenty to do—but why should I? On

the contrary, why shouldn't I? And, if I haven't the will to, why did I come here? But, what would I do anywhere else? Just what will I do anywhere? Do I really know? Is there a goal? If so, is it mine to choose? What kind of choices will I make?

Decisions are difficult. They have about them an air of finality. All of us must generally pay the price for each decision reached; sacrifice is an inherent part of gain.

Graduation and marriage: probably the two aims of every girl here. But are they? Why do you want to graduate? To what end is graduation a stepping stone? Of what use will your degree be to you? Is it graduation, or the accumulation of knowledge that graduation supposedly signifies, that is your hope? Or are you really making any effort toward intellectual improvement? Would you rather have a lucky A, or a well-earned C? Do you know?

Assuming graduation is of value to you, what about marriage? Doesn't it often seem almost wasteful to devote years of your life to attaining a special skill you will use only briefly—maybe not at all? Could it be that marriage and higher education are conflicting goals? But, what type of husband will you find out of college? Is that the reason you are here? No, because you like it here. Why then?

The questions are endless. The answers are few; and they are as gray as the day—very shadowy, very indecisive. These are not the only concerns. There is religion—or is there? There are personal relationships—or are there? You do not always know, it seems you cannot; and perhaps this is true.

## The Sou'wester

Published Weekly by the Students of  
Southwestern at MemphisEDWARD M. YARBROUGH  
EditorBRETT ROBBS  
Business Manager  
RUT TUFTS  
News EditorGEORGE ATKINSON  
Associate Editor  
DAVID MASSEY  
Copy EditorVINCE VAWTER  
Sports EditorWOMEN'S EDITORS . . . . . Carol Ann Colclough,  
Lou Anne Crawford  
COLUMNISTS . . . . . Dick Jennings, Kenneth Phelps,  
Mike ReedCARTOONIST . . . . . David Adcock  
PHOTOGRAPHY . . . . . Jim McKnight, Dave Garber  
CIRCULATION MANAGER . . . . . Jon Bryant  
FWI REPORTER . . . . . Bob ReddingREPORTERS: Judy McDonald, Dale Worsley, Tip Haug, Peggy  
Early, Mary Jane Riegler, Mary Overholser, George Hazard,  
David McGuire, Barry Goldberg, Judy Brown, Claudia Oakes,  
David Reece, Jo Matthews, Steve Ashby, Steve Mallett, Bill  
Wingo, Lynn Holden.

Printed in Memphis by Tri-State Press, Inc.



## Davy's Locker

Dear Davy,

Is it considered improper here to ask a girl out less than two weeks before the date?

SN

Dear SN,

Generally speaking, yes. However, there are some traditions among the fraternities which are too well established to be changed.

Davy

Dear Davy,

How is Southwestern ranked as a party school? Number what in the nation, I mean?

Gay Dog

Dear Gay Dog,

Southwestern is officially the Number 1000 party school in the nation, having moved up to that rank past Bob Jones University.

Davy

Dear Davy,

Often when I go to the Refectory alone and walk into the dining area

with my tray, there is no one there whom I know. Since I dislike eating alone, would it be proper to seat myself at the table of, say, an attractive young lady, and introduce myself?

Roger Cool

Dear Cool,

Why not? My favorite device is to lean over and whisper desperately, "Weel you be the mother of my cheeldren?" You can add "Eh?" if you like.

Davy

Dear Davy,

Thanks for your advice last week. I went out with Coby and had the biggest time of my life, he's the most. He took me to that Klan meeting you suggested. Everybody knew him; he's called the wizard under the sheet.

No Longer Curious, Grateful

Please address all questions and subpoenas to Box 353, Southwestern, Memphis.

## Letter to the editor

## ENTER FAITH

Dear Ed,

Tuesday night, by a vote of 11-6, progress was made at Southwestern. The Student Government Association approved the constitution of the former Protestant Religious Council, creating a new Southwestern Interfaith Council.

Prefacing his motion to accept the new Constitution, Charlie Murphy intoned his own personal conviction that The Christian Way was to him the only true way by which the individual could reach God, but he recognized the differences of opinion held by some of his fellow-students. He then presented a document which would welcome students of divergent faiths and opinions into a council which will "provide a place for the representation of the religious con-

victions of all the students on the campus."

That a Christian school enjoying an atmosphere of genuine tolerance has as the President of its new Interfaith Council a Christian of the dedication of Charlie is indicative of the fact that its activities will be guided in their inception along the paths of the majority of the students. As a Christian institution it is only proper that at Southwestern the majority should rule, but the Student Senate is to be praised for encouraging the existence of minority fellowship and cooperation.

An opponent of the SIFC suggested that it was a compromise of an ideal. It is not. It is rather a forum for an idea—an idea which properly implemented amounts to progress.

George Conroy

## French Consul Will Address Students In Chapel Today

The French Consul General in New Orleans, Louisiana, is visiting the Southwestern campus today. Pierre Mathivet de la Ville de Mirmont speaks today to the student body, and will address the Alliance Francaise here tonight.

M. de Mirmont was formerly the administrator of the French Civil Service, and representative of the Presidents of France in charge of special affairs to Indo-China.

Straining for my last drop of coffee I decided this oasis in a desert of impersonal, avaricious, corporation food service deserves an apt name, and the considering its size and the effectiveness with which it alleviates the pitiful situation of our "improved" Lynx Lair facilities the most apt name veritably flashed into my mind:

THE SMALL CONSOLATION

But considering that some might view this with disdain, I also thought of what it represents from their point of view, obviously, else Bob Poole would still be with us. So in deference to the powers that be I propose an alternate title: THE SMALL CONCESSION.



## Weekend Collisions Involve Bob Poole And Student Trio

A rainy Saturday brought bad news to Southwestern last weekend when Mr. Bob Poole, former Lynx Lair operator, and three SAE's were hurt in two serious auto accidents.

Mr. Poole was injured at about 1:30 Saturday morning when the car in which he was riding skidded into a utility pole. He was hospitalized at St. Joseph's with four cracked ribs, a fractured wrist, and head injuries requiring 63 stitches. He is presently at home and recovering well. His friends should address their cards to the Dynasty Lounge, 3683 N. Watkins.

The second wreck occurred late Saturday night when Dickey Fletcher, Joe Alford, Bob Core, and Clint Harelson were involved in a two-car accident at the corner of E. Parkway and McLean. Fletcher's car, traveling west through the intersection, collided with another car turning left in front of him. Both cars were extensively damaged. Fletcher, Alford, and Core were knocked unconscious in the crash and were taken to Baptist Hospital.

Fletcher was operated on Sunday morning for a knee injury, and, though having chest pains, should be released later this week. Alford, suffering from a broken jaw, underwent surgery Sunday afternoon and was released Monday night. Core left the hospital Sunday morning with only facial lacerations, while Harelson was the only uninjured passenger in either car. The occupants of the other vehicle were released without serious injuries.

## Senators Approve Switch To SIFC

The Senate approved the Southwestern Inter-Faith Council and postponed a decision on a resolution concerning the refectory after considerable debate Tuesday night.

The Protestant Religious Council submitted another revised constitution, having reconsidered the question since Hollingsworth vetoed their proposition of two weeks ago. The Southwestern Inter-Faith Council, as the new organization is called, "is to responsibly direct the religious activities of the students of Southwestern at Memphis," functioning as a co-ordinating body for the individual religious groups.

The chief matter of Senate concern was the apparent "about-face" of the PRC. George Abraham accused the council of yielding to pressure. He felt that a Christian council would be most consistent with the nature of Southwestern as a Christian college.

Along the same line, Richard Ennis added that he saw the change in the attitude of the PRC as a "wishy-washy" compromise of an ideal.

Betty Beall, vice-president of the PRC, explained that there were only five voting members of the PRC on the retreat when they approved the CCC constitution. At a later meeting which produced the SIFC constitution, eight voting members were present, the vote being 7-1 in favor of the SIFC. She asserted her belief that this change was in keeping with the otherwise progressive character of Southwestern, while continuing in the traditional Christian spirit of the college.

Joe Hebert replied, insisting that the meeting which resulted in the SIFC was dominated by two people and that the latest proposal had not been fully discussed by the entire PRC.

Speaking in favor of the change to inter-faith council, John Hille said that the function of this group should be co-ordination, leaving evangelism to the individual religious groups on campus.

At this point Ken Stanley interrupted, saying that continuing the highly subjective exchange of opinions was pointless. The ensuing vote was 11-6 in favor of the SIFC constitution.

In the other big issue of the evening, Pat Black moved that the Senate adopt a resolution prepared by Welfare Commissioner Highsmith which included a Senate



LASH ABRAHAM oversees ground-breaking for annual Derby Day festivities. Junior Class President Richard Ennis and Frosh President Ronnie Colter join in the mud-slinging.

## Derby Day Provides Rest For Class-Wearied Students

Southwestern students looking for a respite from academic pressures are encouraged to participate in Derby Day, Saturday, October 22. The annual afternoon of hilarity is sponsored by the four classes and the fun will begin at 2:00 P.M. at the B-team flagball field.

Class will compete against class in several categories. The events include a greased pig chase, a clothes-changing contest, a leap frog race, a three-legged race, a

sack race, a spoon-and-egg race, various relays, an egg-catching contest, a tug-of-war, and a grapefruit necking contest. Also scheduled is a special surprise event.

Everyone is welcome to come and watch or to take part in the fun.

## Neogothicism

Michael Lane Welch has been described by his fellow students as "Southwestern's only true liberal." In the following exclusive interview, Mr. Welch demonstrates his enlightened manner of thinking which has earned for him this label.



SW: Mike, they call you a "true liberal" at Southwestern. You have, in fact, been compared by some to Mr. Hemphill. What does this mean to you?

MR. WELCH: Nothing.

SW: Do you and Mr. Hemphill share common political views?

MR. WELCH: No.

SW: Then you disagree with Mr. Hemphill.

MR. WELCH: No, I would never do that; but what was your question before this one?

SW: It was something about Mr. Hemphill's political views.

MR. WELCH: It is quite possible that he and I share common views but we differ on such things as the War.

SW: Please explain.

MR. WELCH: Would you care for a cigarette?

SW: Yes, thank you, I'd love one. But about the War now...

MR. WELCH: Well, I don't really feel that I should try to portray Mr. Hemphill's views.

SW: Yes, but what about your own views?

MR. WELCH: Well, to me our foreign policy is placing the U. S. ... what was the question?

SW: About the War.

MR. WELCH: Oh well, what did I say last?

SW: Foreign policy.

MR. WELCH: Wait, let me see your notes ... Oh! Well, in the areas of the world where the majority of the people are much poorer than anyone could ever imagine ... wait, I'd like to start over.

## Pledge Officers Selected For Coming School Year

Fraternity men and sorority women delegated pledge class officers honors recently. Pledges are now busy inspiring their groups to gather activity points for initiation.

Leading the AOPi pledge class this year will be Rosemary Wood, President; Anne Kristofferson, Vice-president; Sarah Bagwell, Secretary; Mary Margaret Weddington, Treasurer; and Bonnie Blanton and Suzanne Chadwick, Project Chairmen.

Chi Omega pledges have chosen Susie Snider, President; Marty Frick, Vice-president; Linda Pilcher, Secretary-Treasurer; Beth Marr, Music Chairman; Ruth Ann Sadler, Activities Chairman; and Gay House, Chaplain.

Supporting Pedie Pederson as President of the Kappa Delta pledges will be Anne Rogers, Vice-president; Marsha Lee, Treasurer; and Lani Collins, Secretary.

Pledge projects for Tri Delta will be directed by Emily Scarborough, President; Susan Ogden, Vice-president; Nancy Dilworth, Secretary; Gail Emery, Treasurer; Martha McCullough, Chaplain; and Music Chairman, Debbie Sales.

Zeta girls are backing their pledge officers who include Roberta Plenge, President; Kathy Drake, Vice-president; Meg Ritterter, Secretary; Didi Wegling, Treasurer; Cathy Keheley and Cheryl Thornton, Project Chairmen; and Lavinia Rogers, Scholarship Chairman.

Pounding the gavel for the ATO pledges will be Tommy Thomas. He is assisted by Rick Hollingsworth, Vice-president; Dale Worsley, Secretary; and Ray Moore, Treasurer.

Kappa Alpha pledges chose Mike Patton, President; Dave Garrett, Vice-president; and Ross Rowland, Secretary-Treasurer.

The Kappa Sig pledge officers are President, Steve Pillow; Vice-president, David McDowell; Secretary, Jack Stubbs; and Treasurer, Bill Lyons.

Leaders of the SAE pledge class include President, John Purvis; Vice-president, Walker Lloyd; Secretary-Treasurer, Andy Gaston; Recorder, Bud Ray; Social Chairman, Mike Stone; and Chaplain, Doug Williams.

Guiding SN pledges are their officers, Ronnie Colter, President; Charlie Tuggle, Vice-president; C. W. Stacks, Secretary; Jimmy Smith, Treasurer; Buz Stuck, Chaplain; and James Chandler, Social Director.

## Honor Council Orientation Continues For Freshmen

Members of the Honor Council will meet with the fraternity and sorority pledge classes, and with freshmen independent men and women, during the week October 23-29. The time and place of these meetings is to be arranged with the pledge trainers.

These meetings will serve two purposes. First, they will be a continuation of orientation concerning the Honor System. The preliminary fall orientation program concentrated on the ideals of, and a general introduction to, the system.

Having been here for a while, the freshmen probably have a better understanding of the ideals; yet there may still be confusion as to how the system actually operates, and how the council works.

In the second place, the Honor Council intends to use these meetings for nominations for Freshmen class representatives, instead of having a special meeting of the entire class for this purpose.

## Campus Brief

In the Wednesday chapel, candidates for this year's Homecoming Queen will be chosen by nomination of the whole student body. Each student coming to chapel will be given a slip of paper upon which he can write the names of his five favorite Junior or Senior girls. These nominations will be counted, and the five girls receiving the most nominations will become candidates. The Homecoming Queen Election will be Friday, October 28, at the polls from 8:00 to 4:30 p.m.

## Dynasty Lounge And Restaurant

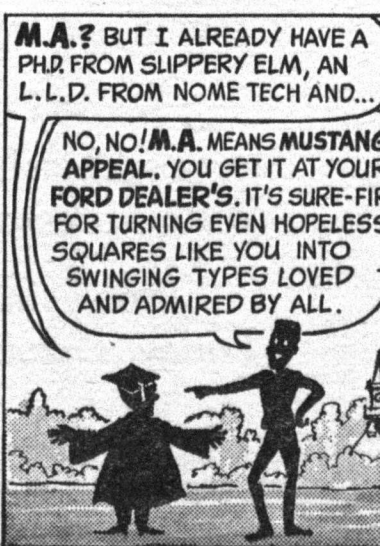
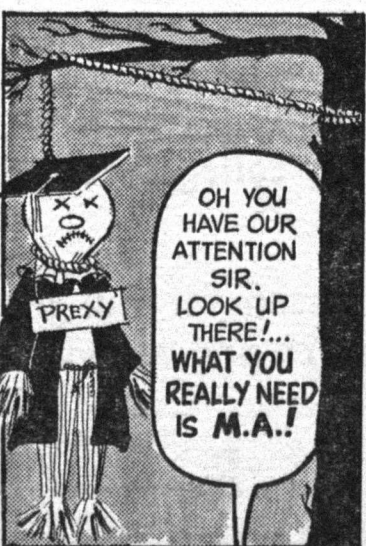
serving fine foods  
3683 North Watkins  
Phone 357-9331  
BOB POOLE  
OWNER

## PREXY GETS THE THIRD DEGREE



HAVE I FAILED AS A COLLEGE PRESIDENT? I SEEM TO HAVE LOST CONTROL OF THE STUDENT BODY.

WHY CAN'T I LEAD YOU STUDENTS TOWARD CHERISHED GOALS OF LEARNING? WHY CAN'T I EVEN GET YOUR ATTENTION?



GET YOUR M.A. AT YOUR FORD DEALER'S

Girls enter the Miss Liberty Bowl Football Game Beauty Pageant. Winner gets a free Mustang. See your local Ford dealer for details.

## Hogue and Knott Supermarkets

7 Convenient Locations  
Home-Owned  
Home-Operated  
Quality Foods  
at Lowest Prices

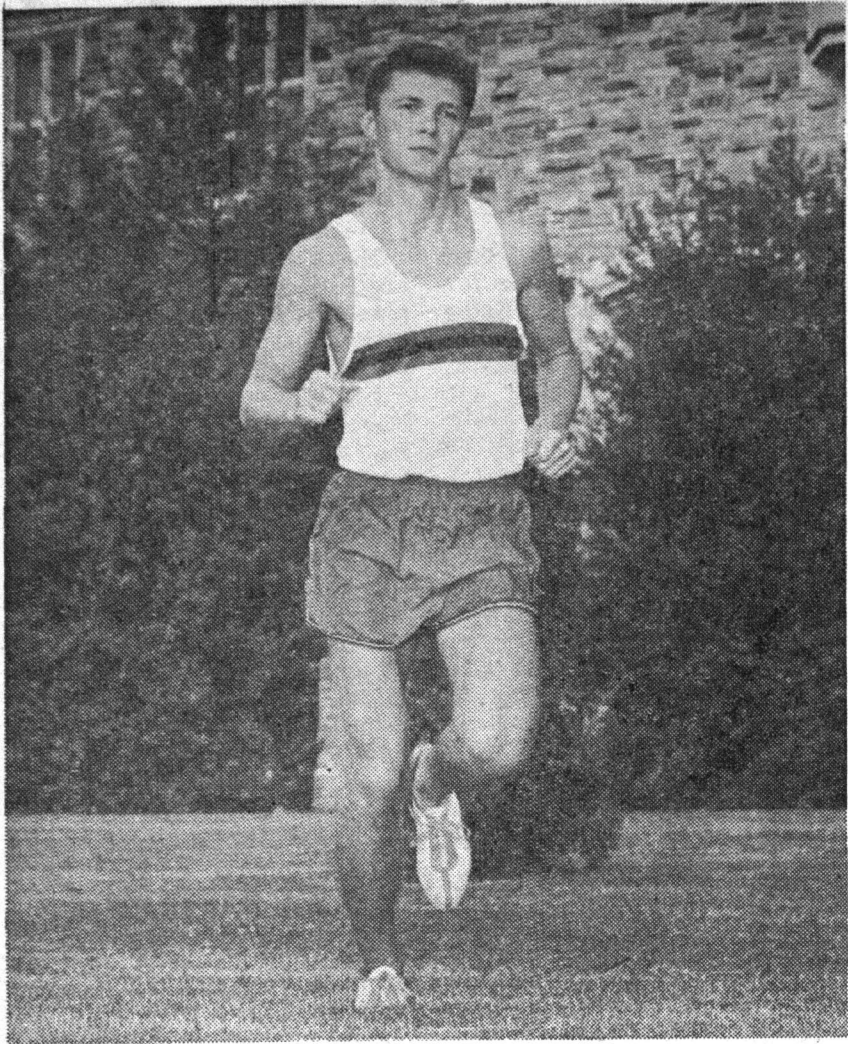
## DOBBS HOUSE

Snack Bar

Briggs Student Center

Fairway Food Store  
No. 2  
651 N. McLean





CO-CAPTAIN STEVE ASHBY displays the form that carried him to a new CBC course record and first place in the meet.



Pleasant Day  
For Homecoming

Subsidization Again

Mike Reed

Southwestern was a sterling guest for the Millsaps homecoming, contributing the crowd pleasing 26-0 shutout on the football field and three busloads of students to participate in the festivities and absorb the aggregate homecoming displays erected in the campus square.

Normally, a 26-0 defeat is a rather listless affair, but this one generated enough excitement to last through several rounds of gin and Squirt at the homecoming dance.

Neely and Jenkins, Millsaps' dynamic duo, lived up to their billing early and got the Majors a big lead in the first quarter, and it looked like the Lynx were in for their worst outing of the season. Then Cook and Jernigan sparked a comeback that five times penetrated inside the Millsaps 10 yard line and gave the Major's goal line defensive unit a chance to shine for the first time this season. With the early offensive show and the late defensive heroics, the Major's fans could speculate all evening long on the potential of their squad, one of Millsaps finest in recent years.

From the Lynx standpoint, the second half offensive spark bodes well for the balance of the season. With the toughest part of the schedule behind them, the team can look to the remaining games with plenty of hope for sweeping them all and delivering Southwestern's first winning season in a long time.

The busloads of Lynx supporters sufficiently impressed the Millsaps people to the point that they invited our people to join in the pre-game festivities, introducing them to the home crowd shortly after dinner, and inviting our cheerleaders to join their in working up enthusiasm for the visiting alumni. Our people were properly

ATO's, Sigma Nu's  
Win Tennis Honors  
In Intramural Play

C. W. Stacks (SN) defeated David Lloyd (ATO) 6-0, 4-6, 6-1 in the championship match of the boys' intramural tennis tournament. Stacks defeated Larry Churchill (SAE) 7-5, 6-4 in the semi-finals, while Lloyd defeated Bruce Parker (ATO) to attain the finals.

The team champion was ATO which amassed 140 points. SAE was second with 105 points and SN third with 100 points. Other teams competing in order of finish were KA, JIKA, KS, and GDI.

McCULLOUGH'S ESSO STATION

Road Service

585 North McLean

Phone BR 4-1881

impressed by the Millsaps hospitality and everything went well for the Southwestern visitors, especially the dance at the Shandy Oaks Country Club later that night, engineered by Jimmy Whittington, Commissioner of Athletics.

Whittington would have appreciated a larger turnout for this bash, but the 115 or so who attended made the project an undeniable success.

The Millsaps coach, basking in the light of one of Millsaps' first seasons ever, makes no bones about subsidization on a minor scale being the salvation of football at Millsaps. Last spring, he had a total of twelve candidates on hand for spring practice, and the picture was pretty grim for the coming season. Well, the Millsaps administration decided to go out and get some boys with the aid of scholarship grants, and the results, immediately apparent in football, will likely carry over to the hardwood and we'll be facing a much tougher Millsaps roundball aggregation.

Millsaps says they are doing no more than schools like us and Sewanee have been doing for years, and that they had to take some steps to improve their faltering athletic program. The truth is that they are wrong about us, and may be wrong about Sewanee, and now we are faced with playing a school that figures to be stronger than us year in and year out or finding someone else to put on the schedule. Finding someone else might be a tough assignment, since schools with our athletic policies are fast disappearing.

Since most people who only incidentally follow athletics are under the opinion that we now subsidize our athletes, perhaps our administration would be interested in studying a policy of minor subsidization similar to the Millsaps plan, if only to improve our chances of managing a balanced schedule that will allow us to go into contests like Washington U. and Millsaps at less than 25 point underdogs.

The Queen  
of the  
All  
Nae West  
She Done Him Wrong  
The No Angel  
Cary Grant  
NOW  
GUILD ART



Lynx Outrun CBC,  
But Are Defeated  
In Mississippi Meet

Last Saturday at Clinton, Mississippi, the Southwestern cross-country team fell to a strong Mississippi College team 23-33. The Mississippi home course, noted for its numerous hills and toughened by an early morning rain, proved to be Southwestern's downfall. B. Woodworth held the winning time 17:28, a new course record, with our own Steve Ashby finishing sixteen seconds behind.

With only a day's rest the Lynx returned Monday to gain their most convincing win of the season, a 17-41 victory over Memphis rival Christian Brother's College. Ashby, Duncan Crawford, Lee James and Morgan Bunch swept the first floor places, with Ashby bettering the CBC course record by some forty seconds.

Tomorrow the team journeys to the Union University Invitational Cross Country Meet in Jackson, Tennessee. The Lynx Harriers hope to gain a victory over their toughest rival, Union, (a victory or a loss will count on this year's dual meet record) plus the individual and team trophies for overall competition.

Majors Halt Lynx  
With Early Scores  
And Tight Defense

The Lynx were set back by the Millsaps Majors last Saturday in Jackson, Miss., by a score of 26-0. The first half play was dominated by the Majors and wore specifically by their quarterback, Danny Neely. Southwestern halted the Majors in the last half but couldn't break through the home team's goal line defense.

The first touchdown came in the first three minutes of play when Neely scored on a five-yard run. The next score for Millsaps came on a 22-yard Neely pass to Ted Weller. Halfback Troy Jenkins scored the final touchdown of the first half on a 12 yard sprint around end. The third quarter saw the last score of the game with an 18-yard pass from Neely to Ed Massey.

Southwestern took the ball inside the Majors 10-yard line five times during the game but couldn't break through the tight defense. Outstanding back for Southwestern during the game was Freshman fullback Bill Jernigan who had several long jaunts and was the Lynx's leading rusher.

The Lynx will travel, after an open weekend, to Sewanee. They have been working hard the entire week and should be ready to even their record at 3-3.

Sigma Nu Defeats ATO;  
Captures Lead in Flagball

Sigma Nu went ahead in the Intramural flagball standings with a win over the ATO's. This was perhaps the most important game of the season as it broke a two way tie for first and gave the SNakes an easier road to their second straight championship. The ATO's are now in a tie for second with the KA's.

The second week of Intramural flagball finds competition still keen in both leagues. The big shock of the week is the SAE's losing two games in a row and all but eliminating themselves from first place. Both of their games have been close but they still can't seem to find the winning combination. The SN's were the first to claim

victory over the SAE's this week with their 26-18 win. In the fourth quarter, with the score tied, Dickie Fletcher was caught in the end zone to give the SN's a two point lead. This put the game out of reach as the SAE's tried an onside kick and Walter Lydick ran it back all the way. John Crowell was the leading scorer in the game with two touchdowns to his credit. The SAE "B" team found trouble with the GDI's but finally downed them 48-42. Freshman Benton Rollins was the big gun for the winners with 3 touchdowns.

The second loss for the SAE's came from the hands of the KA's. The final score was 48-42 with most of the scoring coming in the

last quarter. With one minute left and the score at 42-42, quarterback Vince Vawter threw to John Willett who threw into the end zone to Sandy Sanders for the winning score. The KA's held the SAE's for five downs and then a brilliant defensive play by Sanders gave the ball to the KA's on down. George Atkinson led the game in scoring, catching three touchdown passes. The KA "B" team stayed out of the loss column with a 0-0 tie with th KS's.

The ATO's managed to turn in a 48-30 win over the PiKA's. Halfback Ed Yarbrough, responsible for three touchdowns, and Bill Mead were the standouts of the game.

This is Russ Kennedy of Balboa Island, California, on an in-port field trip as a student aboard Chapman College's floating campus.

The note he paused to make as fellow students went ahead to inspect Hatshepsut's Tomb in the Valley of the Kings near Luxor, he used to complete an assignment for his Comparative World Cultures professor.

Russ transferred the 12 units earned during the study-travel semester at sea to his record at the University of California at Irvine where he continues studies toward a teaching career in life sciences.

As you read this, 450 other students have begun the fall semester voyage of discovery with Chapman aboard the s.s. RYNDAM, for which Holland-America Line acts as General Passenger Agents.

In February still another 450 will embark from Los Angeles for the spring 1967 semester, this time bound for the Panama Canal, Venezuela, Brazil, Argentina, Nigeria, Senegal, Morocco, Spain, Portugal, The Netherlands, Denmark, Great Britain and New York.

For a catalog describing how you can include a semester at sea in your educational plans, fill in the information below and mail.

Director of Admissions  
Chapman College  
Orange, California 92666

Chapman College  
Orange, California 92666

Name \_\_\_\_\_ (Last) \_\_\_\_\_ (First) Present Status  
College/University \_\_\_\_\_

Address \_\_\_\_\_ (Indicate Home or College/University) Freshman ☐  
Sophomore ☐

City \_\_\_\_\_ State \_\_\_\_\_ Zip \_\_\_\_\_ Junior ☐  
Senior ☐

Telephone \_\_\_\_\_ Age \_\_\_\_\_ M \_\_\_\_\_ F Graduate ☐

The Ryndam is of West German registry.

WANTED  
COLLEGE MEN

Midwest Lustre Craft has openings for men willing to work two evenings a week and Saturdays.

We will pay you to learn this program that has been proven very successful in colleges across the nation. Start at \$1.50 an hour. Auto necessary.

Apply in person for full information. Interviews will be held Friday, October 21 and Monday, October 24.

APPLY

R. L. MARSH

Ramada Inn

5225 SUMMER AVE. I-40

9:00 A.M. TO 6:00 P.M.