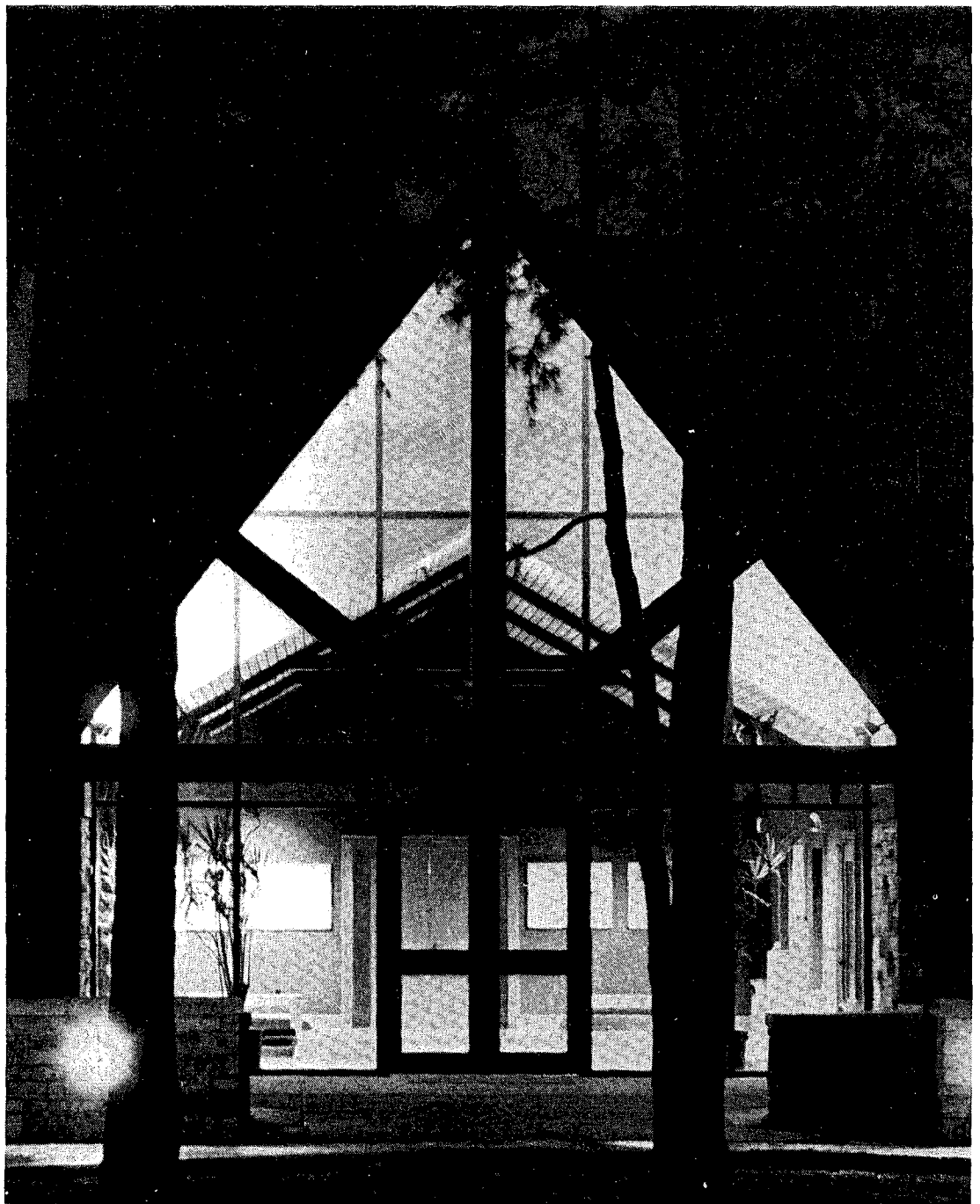


McCoy Theatre
RHODES COLLEGE

presents

The Gondoliers

November 1-4; 8-11; 15-18, 1984.



McCoy Theatre
RHODES COLLEGE
presents

The Gondoliers

Music by
Sir Arthur
Sullivan

Book by
W.S.
Gilbert

Directed by Barry Fuller

Musical Direction by Tony Lee Garner

*Orchestra Conducted by Tony Lee Garner and
Rodney Hudgen*

Set Design Stephen Pair
Lighting Design/Technical Director Laura Canon
Costume Design Betty Ruffin
Costume Design Assistant Jennifer Hyatt
Stage Manager Leslie Reddick
Assistant Stage Manager/
Light Board Operator Teresa Morrow
Rehearsal Accompanist Redmond Eason
Wardrobe Mistress Susan Adams

Lobby Art Exhibition

Samuel Bjorklund

The McCoy Theatre is honored to welcome Mr. Bjorklund back to Memphis with this first showing. Mr. Bjorklund has spent the last twenty years in Aix-en-Provence where for ten of those years he was director of the Leo Marchutz School of painting and drawing. His academic degrees were earned at the University of Southern California and are in English and the Fine Arts. His affinity for France began when he and Ann Jappe (class of 1961), now his wife, studied in Aix-en-Provence as part of the American Institute in 1959 and 1960.

The exhibit is of works dealing with Venice, the setting for THE GONDOLIERS.

CAST

The Duke of Plaza-Toro	Bennett Wood
The Duchess of Plaza-Toro	Ann G. Sharp
Luiz	David Lusk
Casilda	Julie Owens
Marco Palmieri	Doug Trapp
Giuseppe Palmieri	Brian Maffitt
Gianetta	Rebecca Sweet
Tessa	Anne-Marie Akin
Antonio	Mark-Landon Smith
Francesco	Bert Carlock
Giorgio	Stephen Williford
Annibale	Peter Baumgarten
Fiametta	Janee Lambert
Vittoria	Regina Murphy
Giulia	Sarah Jones
Inez	Kathryn Murphy
Don Alhambra	Cullen Holliman

COMPANY

Katherine Bres, Cheryl Clark, Laurie Fromberg, Janet Holloway, Jerry Lovelace, Ross Weisiger, Susan Hook, Patti Marshall, Julia Weaver.

ORCHESTRA

Flutes: Carla Goe, Shari Morrow, Leigh Williams, Clarinets: Ken Croft, Melanie Swift. Trumpets: Frank McCormick, Stephen Risher, Trombones: Michael Buchanan, John LaFerry, Joe Payant. Cello: Lela Taylor Bruce. Bass: Frankie Grace. Percussion: Tony Pantuso. Keyboard: Redmond Eason.

SCENERY AND LIGHTING CREW

Lilla Magee, Fred Ramage, Brian Mott, Gayle McFarland, Tony Pantuso, Rebecca Sweet, Mark Smith, Zan McKelway, Jan Bigham, Florence Johnson, Jo Anne Williams, Bolton Harris, Van Daly, Teresa Morrow.

COSTUME CONSTRUCTION CREW

Apasra Hayes, Laura Richens, Jean Amy, Peggy Daniels, Bette Cloar, Bette Garner, Mary Diehl, Louise Southard, Rue Van Middlesworth, Tracey Varnell, Marty Story, Beth Wood.

THERE WILL BE ONE TEN MINUTE INTERMISSION

MUSICAL NUMBERS

ACT ONE

Overture Orchestra
List and Learn Contadine, Gondoliers
From the Sunny Spanish Shore Duke, Duchess, Casilda, Luiz
In Enterprise of Martial Kind Duke, Duchess, Casilda, Luiz
O Rapture, When Alone Together Casilda, Luiz
There Was a Time Casilda, Luiz
I Stole the Prince Don Alhambra, Casilda, Duchess, Duke, Luiz
Try We Life-Long Casilda, Duchess, Luiz, Duke, Don Alhambra
Bridegroom and Bride Contadine, Gondoliers, Tessa, Gianetta
Kind Sir, You Cannot Have the Heart Company

ACT TWO

Of Happiness the Very Pith Men, Marco, Giuseppe
Rising Early in the Morning Men, Marco, Giuseppe
Take a Pair of Sparkling Eyes Marco
Here We Are at the Risk Contadine, Gondoliers
Dance a Cachucha Contadine, Gondoliers
There Lived a King Don Alhambra, Marco, Giuseppe
In a Contemplative Fashion Gianetta, Tessa, Marco, Giuseppe
With Ducal Pomp Men, Duke, Duchess
On the Day When I Was Wedded Duchess
To Help Unhappy Commoners Duke, Duchess
I am a Courtier Duke, Marco, Giuseppe, Casilda, Duchess
Here is a Case Unprecedented Company

McCOY THEATRE BENEFACTORS

Dr. and Mrs. Robert R. Llewellyn

McCOY THEATRE SUSTAINERS

Mr. and Mrs. Walter P. Armstrong, Jr. Edward and Ann Sharp
Dr. and Mrs. Albert McLean

McCOY THEATRE PATRONS

Dr. and Mrs. Ray E. Curle Margaret Hyde
W. D. Hill Harold Katz

McCOY THEATRE STAFF

Tony Lee Garner, *Artistic Director*

Christina W. Posson, <i>Box Office</i> <i>Manager</i>	Laura Canon, <i>Technical Director</i> / <i>Production Manager</i>
Kelly Tetkoskie, <i>Box Office Assistant</i>	Lilla Magee, Tony Pantuso,
Doug Trapp, <i>Publicity Intern</i>	<i>Production Assistants</i>

WHO'S WHO

ANNE-MARIE AKIN (Tessa) is a freshman making her McCoy Theatre debut. A native Memphian, she attended Harding Academy where she had roles in many theatrical productions, including Eliza in "My Fair Lady" and Suzy in "Wait Until Dark."

PETER BAUMGARTEN (Annibale) is making his first appearance "on stage" at the McCoy, although he worked backstage for "Sweeney Todd." A senior from Atlanta, Peter's musical roles include Charlie in "Annie, Get Your Gun."

KATHERINE BRES (Chorus) is a sophomore majoring in media arts and English. She is new to the McCoy, but has actively participated in the Rhodes College Singers and First Generation.

BERT CARLOCK (Chorus) is a veteran of the McCoy having played the white-faced clown in "Carnival" and been in the company of "Taming of the Shrew." Bert is a senior psychology major who also enjoys backpacking and skeet shooting.

CHERYL CLARK (Chorus) is making her debut at the McCoy in "The Gondoliers." She is a freshman from Forrest City, Arkansas where she appeared in many productions including "Bye, Bye, Birdie," "Harvey," and "The Prisoner of Second Avenue."

LAURIE FROMBERG (Chorus), a sophomore from Houston, is also a newcomer to the McCoy. She enjoys art and hopes to make a career in architecture or interior design.

CULLEN HOLLIMAN (Don Alhambra) is making his second appearance at the McCoy having portrayed Beadle Bamford in last season's "Sweeney Todd." His other Memphis theatre credits include "The Pirates of Penzance" at Playhouse on the Square and musical director for "No, No, Nanette" at the Atrix.

JANET HOLLOWAY (Chorus) is a freshman from Memphis and in her first show at the McCoy. She has worked backstage at Theatre Memphis and enjoys her association with Le Bonheur Teens.

SUSAN HOOK (Chorus) is a sophomore who was last seen at the McCoy in the chorus of "The Taming of the Shrew." At her high school in Atlanta, she participated in "Godspell" and "Annie, Get Your Gun."

SARAH JONES (Giulia) is another freshman making a fresh start here at the McCoy. At home in Houston she preformed in "South Pacific," "Brigadoon," and "Carnival."

JANEE LAMBERT (Fiametta) is a junior history major. Her McCoy credits include understudy for the role of Regina in "Another Part of the Forest" and the armless woman in "Carnival." Janee has sung with the First Generation and the Rhodes College Singers.

JERRY LOVELACE (Chorus) is making his third McCoy appearance. Last year, he was in the company of "Sweeney Todd" and played Donald in "You Can't Take It with You." Jerry is a junior chemistry major.

DAVID LUSK (Luiz), a sophomore majoring in media and business, was last seen at the McCoy in the student production of "The Apollo of Bellac." His high school credits include "Anything Goes" and "The Night of January 16th." A native of Harrisonville, Missouri, David calls his home "a village outside Kansas City."

BRIAN MAFFITT (Giuseppe), a senior media major, is a familiar face on the McCoy stage. Previous roles include Anthony in "Sweeney Todd," Ferdinand in "The Tempest," and Roustabout in "Carnival." He was also in the chorus of "Candide." Brian has designed sets for "The Tempest" and "Living Together" and also appeared in "The Canterbury Tales" at Theatre Memphis, and "The Constant Wife" and "Sweet Charity" at Germantown Community Theatre.

PATTI MARSHALL (Chorus) is a freshman from Fort Lauderdale. Her extensive high school theatre activities include roles in "Once Upon a Mattress" and "Murder on Center Stage" as well as backstage work and student directing.

KATHRYN MURPHY (Inez) was last seen at the McCoy in the demanding role of Penelope in "You Can't Take It with You." A sophomore from Memphis, she has sung with the Rhodes College Singers and the First Generation.

REGINA MURPHY (Vittoria) is making her first appearance on stage at the McCoy, having assisted with costumes last year. A sophomore from Cabot, Arkansas, Regina performed in the BSA talent show and is a member of the American Karate Association.

JULIE OWENS (Casilda) is a sophomore majoring in both music and theatre. At the McCoy, she made her debut in the role of Bianca in "The Taming of the Shrew." Julie is from Calhoun, Georgia where she was selected for the Governor's Honors Program in dramatics.

ANN G. SHARP (Duchess of Plaza-Toro) is an alumna of Rhodes and during her student days was involved in the Southwestern Singers and the First Generation. She made her debut last year at the McCoy as the charmingly wicked Mrs. Lovett in "Sweeney Todd." A familiar face to Memphis audiences, Ann has had leading roles in "The King and I," "Oh, Coward," "The Music Man," and "A Little Night Music" at Theatre Memphis.

MARK-LANDON SMITH (Antonio) has had many roles at the McCoy, including a spirit in "The Tempest," the President in "The Apollo of Bellac," Tony in "You Can't Take It with You," and the tailor in "The Taming of the Shrew." He also worked with the stage crew for "Sweeney Todd." A junior media major, Mark's interests include old films and music.

REBECCA SWEET (Gianetta) is a junior majoring in music. "Becca" is no stranger to the McCoy. Previous roles include the stiltwalker in "Carnival," chorus in "Sweeney Todd," Third Lady in "The Chalk Garden," and chorus in "The Taming of the Shrew." A native of Dallas, Becca also performs with the Rhodes College Singers and the First Generation.

DOUG TRAPP (Marco) is a senior media and business major from Nashville. His previous McCoy credits include chorus in "Candide," Tobias in "Sweeney Todd," and a reading of Michael Fredman's "Fairy Tale." Presently he is public relations intern for the McCoy and student representative to the McCoy Visiting Artists Committee. Doug is also a three year veteran of the First Generation.

JULIA WEAVER (Chorus) appeared on the McCoy stage in the role of Alice in "You Can't Take It with You" and sang in the chorus of "Carnival." She worked backstage for "The Chalk Garden." A senior psychology-religion major, Julia is currently a student representative to the Board of Trustees.

ROSS WEISIGER (Chorus) is a senior from Rockville, Maryland. He was last seen at the McCoy in "You Can't Take It with You." Ross enjoys swimming and singing with the Rhodes College Singers.

STEPHEN WILLIFORD (Giorgio) is a Rhodes alumnus who has actively participated in several McCoy productions. He sang in the choruses of "Sweeney Todd," "Carnival," and "Candide," and most recently portrayed Baptista in "The Taming of the Shrew." Stevie also enjoys playing the sousaphone with the Greater Frayser Area Woodshop Band.

BENNETT WOOD (Duke of Plaza-Toro) is making his first appearance on stage at the McCoy although he directed McCoy's production of "The Tempest" two seasons ago. One of Memphis' finest actor/directors, Bennett has appeared in productions too numerous to list. His acting credits include lead roles in "Equus" and "Private Lives" at Theatre Memphis and most recently in Circuit Playhouse's production of "Angel's Fall." His directing credits include "Oh, Coward," "In Fashion," and "As You Like It."