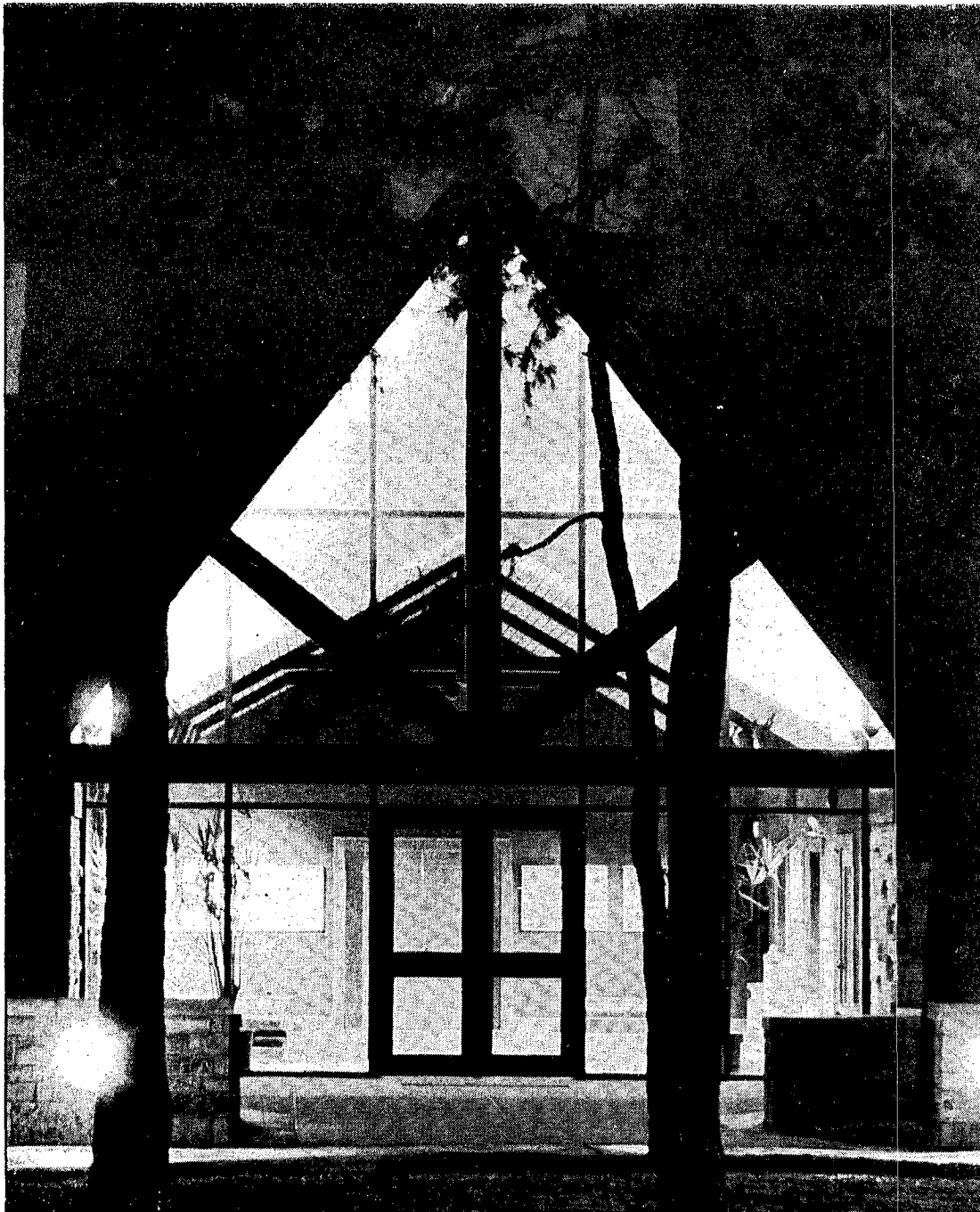


**McCoy Theatre**  
**Southwestern At Memphis**  
presents

***THE WORLD WE LIVE IN***



## *From the Artistic Director*

I recall standing squarely in the center of the McCoy Theatre just prior to its completion. As I stood there, it occurred to me that no matter how functional this space was, no matter how attractive the facility, no matter what promise of the future lay ahead, what the McCoy Theatre needed was people. It needed character. It needed "spirits" or actors, performers, artists, directors, musicians, technicians, and those other never seen but behind the scene people who help bring a theatre to life.

Three months later, on the night after "Brecht on Brecht" was struck I came into the theatre rather late in the evening. All the platforms were out, the lights were down and the theatre appeared to be much like it was before it opened. But on this night the theatre was warm and alive with "spirits." People had filled this space and had learned much from it. Communities of actors and technicians had taken the raw materials of script, score and talent and had created the magic of theatre.

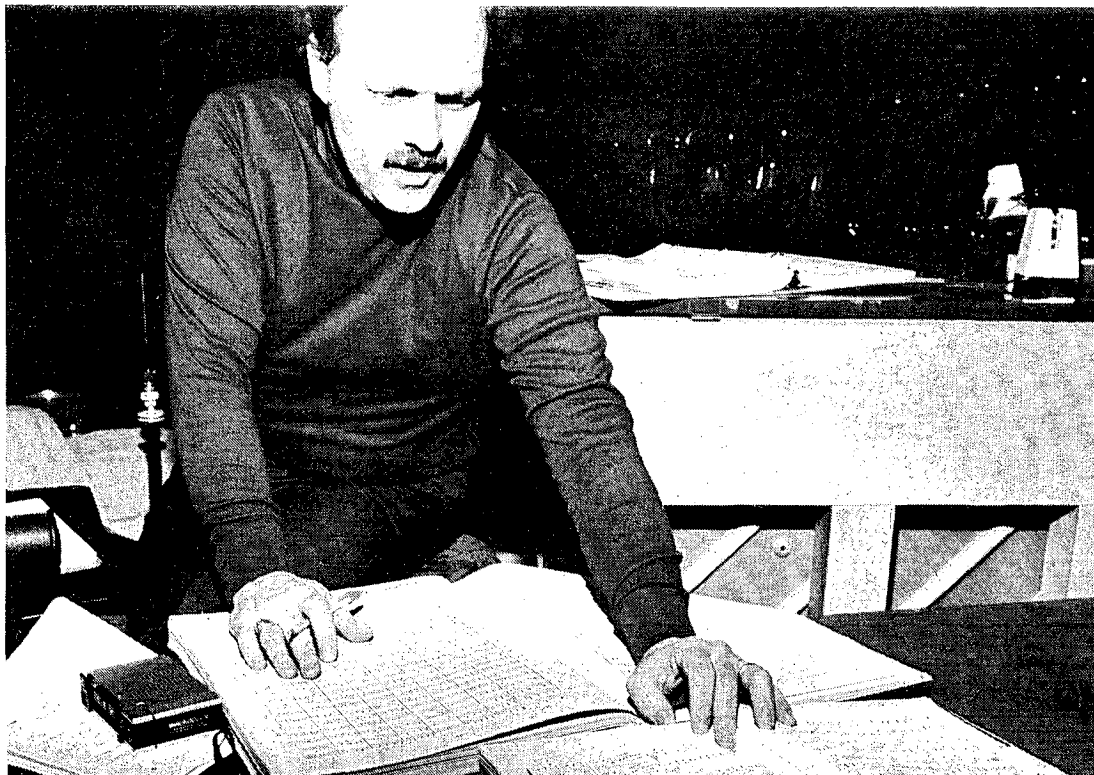
Now there is a single light left on in the theatre at all times. No actor, past, present or future likes to play in the dark.

The Premier Season of the McCoy Theatre was an educational and artistic success. In addition to the subscription series of three productions, there were two non-subscription productions, many scenes rehearsed and performed, thousands of hours spent building, painting, hanging lights and cleaning up. Approximately 200 high school students saw performances. There were a total of 42 performances offered to the public. That public saw the first Memphis performance of "Candide" and "The World We Live In." The Premier Season lived up to its promise of presenting theatre that was challenging; theatre that provided a balance between process and product. It lived up to the potential of presenting theatre in a highly intelligent and sophisticated manner. The McCoy Theatre established itself in the Memphis theatrical community as a place where it is a pleasure to work and as a space that is challenging to the creative artist.

The success of the McCoy Theatre was guaranteed by the people of the Southwestern and Memphis communities whose "spirits" now fill the place.

We look forward to Season 2 and hope that you will be a part of our theatre's life.

Tony Lee Garner  
Artistic Director  
McCoy Theatre



**McCoy Theatre**  
**Southwestern At Memphis**  
presents

***THE WORLD WE LIVE IN***

(The Insect Comedy)

By Josef and Karel Capek

Originally Produced at the  
National Theatre of Czecho-Slovakia  
at Prague in 1922

Adapted and Arranged for the American Stage  
By OWEN DAVIS

Directed by Ray Hill  
Costumes by Leslie Carruth  
Lighting Design by Laura Canon

Assistant Director: Terry Hampton

The World We Live In is presented through  
special arrangement with Samuel French, Inc.  
25 West 45th St., New York, N.Y.

## **CAST**

### **THE PRELUDE—A FOREST GLADE**

The Vagrant ..... Allen Battle  
The Professor ..... Bree Cosner

### **ACT I—THE BUTTERFLIES**

Apatura Iris ..... Christine Nemetz  
Apatura Clythia ..... Cindy Sue Brown  
Felix ..... Todd Sharp  
Victor ..... Robert Howell  
Otakar ..... Jon Shames  
Young Butterflies ..... Lisa McGee  
..... Jennie Inglis  
..... Valori Hunt

### **ACT II—THE MARAUDERS**

Chrysalis ..... Bree Cosner  
Male Beetle ..... Jon Shames  
Female Beetle ..... Laura Lee  
Another Beetle ..... Cindy Sue Brown  
Ichneumon Fly ..... Robert Howell  
Its Larva ..... Jennie Inglis  
Male Cricket ..... Todd Sharp  
Female Cricket ..... Lisa McGee  
Parasite ..... Victoria Conatser

## **INTERMISSION**

### **ACT III—THE ANTS**

Dictator of Red Ants .....	Robert Howell
Leader of Yellow Ants .....	Todd Sharp
Ants .....	Wade Cosner
	..... Jon Shames
	..... Laura Lee
	..... Jennie Inglis
	..... Lisa McGee
	..... Christine Nemetz
	..... Cindy Sue Brown
	..... Valori Hunt
	..... Victoria Conatser
	..... Betsy Whitesell
	..... Laura Clopton

### **EPILOGUE—LIFE AND DEATH**

Moths .....	Lisa McGee
	..... Jennie Inglis
	..... Christine Nemetz
Snails .....	Laura Lee
	..... Cindy Sue Brown
Woodcutter .....	Jon Shames
A Woman .....	Victoria Conatser

## WHO'S WHO

**ALLEN BATTLE** — Allen's previous Southwestern appearances were in "Candida" and "Brecht on Brecht."

**CINDY SUE BROWN** — Cindy Sue made her Southwestern acting debut last year in Michael Fredman's Review but has been involved in Lambuth College Theatre since third grade.

**VICTORIA CONATSER** — Victoria is a newcomer from Nashville where she studied at the Academy Theatre.

**BREE COSNER** — Bree first trod a Memphis stage in MSU's recent production of "The Time of Your Life."

**ROBERT HOWELL** — Robert last season had leading roles in "Kennedy's Children" and "Who's Afraid of Virginia Woolf?"

**JENNIE INGLIS** — Jennie was the Valet in "No Exit" and a member of the Chorus in "Electra."

**LAURA LEE** — Laura is a Southwestern Junior making her first stage appearance in this play.

**LISA MCGEE** — Lisa, a freshman biology major, is new to Southwestern's stage but has been in productions of "Showboat" and "Carousel."

**CHRISTINE NEMETZ** — Christine's list of credits includes "Kennedy's Children," "Candida" and "Maria Stuart."

**JON SHAMES** — Jon just closed as "Tom" in "Living Together" and has been seen in "Round And Round The Garden", "Brecht On Brecht" and "Kennedy's Children".

**TODD SHARP** — Todd's last appearance on a Memphis stage was in the Theatre Memphis production of "Life With Father" in the early 70's.

*The McCoy Theatre expresses sincere appreciation to*

**SPRINGER ANTIQUES**

1712 Madison Avenue

for furnishings provided for the performance of  
Siobhan McKenna.

SOUTHWESTERN AT MEMPHIS  
DEPARTMENT OF THEATRE AND MEDIA ARTS

presents

LIVING TOGETHER

from

THE NORMAN CONQUESTS

by Alan Ayckbourn

Direction by Betty Ruffin

Set Design by Brian Maffitt

Lighting Design by Laura Canon

Living Together is presented through  
special arrangement with Samuel French, Inc.  
25 West 45th St., New York, N.Y.

## CAST

Norman . . . . . Harold Leaver  
Annie . . . . . Teresa Morrow  
Tom . . . . . Jon Shames  
Sarah . . . . . Kelley Chrestman  
Reg . . . . . Pat Owen  
Ruth . . . . . Carol Marsh

## SYNOPSIS

### Act I, Scene 1

The living room at Annie's home.  
Saturday, 6:30 p.m.

### Scene 2

The same. 8 p.m.

## INTERMISSION - 15 MINUTES

### Act II, Scene 1

The same. Sunday, 9 p.m.

### Scene 2

The same. Monday, 8 a.m.



## WHO'S WHO

### HAROLD LEAVER (Norman)

Harold comes to Southwestern from Doraville, Ga. where he played Albert Peterson in BYE, BYE BIRDIE, Felix Unger in THE ODD COUPLE, AND Mr. Frank in THE DIARY OF ANNE FRANK. He was president of his high school drama club. The past two summers he worked in community theatre in the Atlanta area. He is a sophomore Theatre and Media Arts major. In addition to other campus productions, last fall he played "Norman" in ROUND AND ROUND THE GARDEN, the first of the plays in THE NORMAN CONQUESTS trilogy to be presented by Southwestern.

### TERESA MORROW (Annie)

Teresa is a native of Little Rock and is a Theatre and Media Arts major. A junior, she has played many roles in campus productions including MOMENTS OF MADNESS. She has directed THE GOLDEN TALES OF WISHERS AND DREAMERS. This summer she will be an intern at Memphis Children's Theatre. She played "Annie" in ROUND AND ROUND THE GARDEN.

### JON SHAMES (Tom)

Jon comes to Southwestern from New York City. He is a sophomore and an English major. He has played in several campus productions and was in KENNEDY'S CHILDREN last year. His most recent role was in BRECHT ON BRECHT. He was "Tom" in ROUND AND ROUND THE GARDEN.

### KELLEY CHRESTMAN (Sarah)

Kelley, a freshman, was president of the Memphis Trezevant High School Drama Club. She is a psychology major and is working on costumes for the Renaissance Festival. Kelley is the only member of the cast who was not in ROUND AND ROUND THE GARDEN.

### PAT OWEN (Reg)

Pat, a Memphian, is a senior and a history major. He is a member of the Society for Creative Anachronism and the organizer of the new Renaissance Festival. "Reg" is his first major role which he also played in ROUND AND ROUND THE GARDEN.

### CAROL MARSH (Ruth)

Carol is a Memphian and has worked for five seasons as a volunteer backstage worker at Theatre Memphis. She is a junior and a biology major. She made her acting debut as "Ruth" in last fall's production of ROUND AND ROUND THE GARDEN.

### PRODUCTION STAFF

Stage Manager:	Josh Sandifer
Rehearsal Assistant:	Rebecca Ellington
Lights:	Anne Shouse and Stuart Ivy
Props:	Jennifer Hyatt
Set Dressing:	Patrice Buford
Make-up:	Laura Frase
Wardrobe:	Kelley Chrestman
Publicity:	Helen Norman
Campus Publicity:	Valerie Hunt

### CREWS

Carol Beck, Bill Watkins, Susan Bohner,  
Beth Spencer, Georgia Blythe, Phil Jones,  
Jeffry Gregson, Tom Merrill, Don Linke.

### ACKNOWLEDGEMENTS

Charlene Turner, Lynn Blair.