

**McCOY THEATRE
RHODES COLLEGE**

presents

The Mound Builders

by Lanford Wilson



The Miss Firecracker Contest

by Beth Henley



On The Razzle

by Tom Stoppard



SEASON 7 IN REPERTORY



**McCOY THEATRE
RHODES COLLEGE**

presents

On The Razzle

by Tom Stoppard

(adapted from "Einen Jux will er sich machen"
by Johann Nestroy)

Directed by Tony Lee Garner

Production Set Design
Stephen Pair

Set and Performance Space Design
Kathy Haaga

Costume Design
Betty Ruffin

Technical Direction and Light Design
Laura Canon

Stage Manager David P. Brandon, Jr.
Assistant Stage Manager Valerie Weeks
Properties and Furniture Paige Walker Southard
Set and Lighting Crew Marty Story, Joe Tamborello, Greg Krosnes, Stacy DeZutter,
Leigh Ann Evans, Margaret Chandler, Robert Watkins, Ajay
Jones, Bryan Ford, Ann Hollingsworth, LeAnne Gaddis,
Berkeley Bush, Sarah Jones, Alan Ostner, Kim McAfee, Ann
Goodson, Kathleen Atkinson, Scott Swoger, Gayle McFarland,
Catherine Summ, Alice Hendricks, Charles B. Smith, Reid Harlin,
Chris Couch, Andrew Schaffner, Sturla Olsen, Chris Mangum,
Will Davis, David Jones, Todd Emily, Jeff Halpape, Norm Pauley
Costume Crew Chris Davis, Anne Payne, Sarah Taylor, Jean
Amy, Debbie Beck, Emily Flowers, Relda Hale
Sound Lynn Taylor
Program Photography David Jones

Produced by special arrangement with Samuel French, Inc.

CAST
(in alphabetical order)

ANNE-MARIE AKIN	Christopher
DONALD E. BARBER	Zangler
BILL BARKSDALE	Constable
	Scots Man
	Waiter Two
	(Understudy Melchior)
MARGARET CHANDLER	Gertrude
	Belgian Foreigner
	German Woman
CHRIS DAVIS	Coachman
	(Understudy Zangler)
DESIREE EARL	Marie
LEIGH ANN EVANS	Gertrude
	Belgian Foreigner
	German Woman
BRYAN FORD	Weinberl
ANJEANETTE JONES	Ragamuffin
	Waiter One
	Scots Woman
	(Understudy Marie)
SARAH JONES	Madame Knorr
GREGORY K. KROSNES	Melchior
PATTI MARSHALL	Lisette
	Mrs. Fischer
KRISTEN MURRAY	Miss Blumenblatt
	(Understudy Mrs. Fischer)
DETLEF SCHOLZ	German Man
	Constable
ANN G. SHARP	Madame Knorr
	Miss Blumenblatt
BRAD SHELTON	Sonders
	Hupfer
	Waiter Two
MARK-LANDON SMITH	Hupfer
	Sonders
	Waiter Two
MARTY STORY	Phillipine
LEIGH ANN VAUGHN	Phillipine
	Waiter One
	(Understudy Christopher)
ERICA YODER	Lisette
	Mrs. Fischer

ACT I

- Scene 1:** Zangler's Room and Shop
Scene 2: On the Road to Vienna
Scene 3: Vienna
Scene 4: Madame Knorr's Fashion House

INTERMISSION

ACT II

The Ante-Room of Imperial Gardens Cafe

ACT III

- Scene 1:** Miss Blumenblatt's House
Scene 2: Miss Blumenblatt's Garden
Scene 3: Zangler's Shop

THERE WILL BE ONE FIFTEEN-MINUTE INTERMISSION

ABOUT THE DIRECTOR:



TONY LEE GARNER is indispensable at the McCoy. He is our Artistic Director and is Chairman of the Rhodes Department of Theatre and Media Arts. As if that were not enough, he is also conductor of the Rhodes Singers. He is an actor, a singer, a director, a musical director and a real swell guy. Last season, Tony played Colonel Oscar Fairfax in *LITTLE MARY SUNSHINE* and performed in *SONDHEIM & SONDHEIM*. He has been seen in other McCoy roles including *SWEENEY TODD*, Mr. Squeers in *NICHOLAS NICKLEBY* and Armado in *LOVE'S LABOUR'S LOST*. As a director and musical director, he has given McCoy audiences such treats as *BEYOND THERAPY*, *WONDERFUL TOWN*, *CARNIVAL*, *CANDIDE* and *COWARDY CUSTARD*. His Theatre Memphis credits as actor and musical director span twenty years and are too vast to enumerate, but his most recent project there was the musical direction for *ANNIE GET YOUR GUN*.

The Company



ANNE-MARIE AKIN is a familiar face to McCoy audiences, having taken roles in *COWARDY CUSTARD*, *NICHOLAS NICKLEBY*, *WONDERFUL TOWN*, *THE GONDOLIERS*, *LOVE'S LABOUR'S LOST* and *THE CHILDREN'S HOUR* as Martha. Anne-Marie is a senior Theatre major and spent last summer studying at Cornell University in the National Theatre of Great Britain summer program. She is one of four students appearing in two of our current productions.

DONALD E. BARBER may be a first-timer here at the McCoy, but he has been a Theatre Memphis mainstay for a number of years. He portrayed the Devil in *MAN AND SUPERMAN* and Bottom in *A MIDSUMMER NIGHT'S DREAM*. Other plays on his list of associations are *THE FOREIGNER*, *ANNE OF THE THOUSAND DAYS*, *THE LATE CHRISTOPHER BEAN* and "about thirty or forty others".



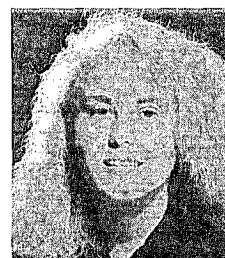
BILL BARKSDALE played Fleet Foot in last season's musical *LITTLE MARY SUNSHINE* and was Lonnigan in *WONDERFUL TOWN*. He also appeared in a high school production of *YOU CAN'T TAKE IT WITH YOU*. He is a sophomore from Jackson, Mississippi, whose interests include working in radio and with the youth ministry.

MARGARET CHANDLER was Peggy Rogers in our production of *THE CHILDREN'S HOUR*. She is a sophomore English/Media major, plays racquetball and is a member of Alpha Omicron Pi sorority. Previous roles in Dalton, Georgia, include Hippolyta in *A MIDSUMMER NIGHT'S DREAM* and Myrtle Mae in *HARVEY*, as well as roles in *WORKING* and *THE DINING ROOM*.



JERRY CHIPMAN is admired by Memphis audiences both as an actor and as a director. Last season, he directed two critically acclaimed shows at Circuit, *AS IS* and *FOOL FOR LOVE*, and took the leading role as Henry in Tom Stoppard's *THE REAL THING* at Theatre Memphis, which garnered a Best Actor nomination for him at the Memphis Theatre Awards. 1988 will be another busy year for Jerry, since he will direct *SWEET BIRD OF YOUTH* at Theatre Memphis and will return to the McCoy to direct John Guare's *THE HOUSE OF BLUE LEAVES*. He has also directed *AGNES OF GOD*, *KEY EXCHANGE*, *HOT L BALTIMORE*, *CRIMES OF THE HEART*, *ANGELS FALL*, *LOOSE ENDS*, *FIFTH OF JULY*, *VANITIES* and *THE SHADOW BOX*. His onstage credits at the McCoy include portrayals of Newman Noggs in *NICHOLAS NICKLEBY* and Dr. Johnny Buchanan in *SUMMER AND SMOKE*. Among his many Theatre Memphis roles are personal favorites such as Ken Harrison in *WHOSE LIFE IS IT ANYWAY?*, Jason in *MEDEA*, Tony Cavendish in *THE ROYAL FAMILY*, C. K. Dexter Haven in *THE PHILADELPHIA STORY*, Jaques in *AS YOU LIKE IT*, and St. John Quartermaine in *QUARTERMAINE'S TERMS*.

CHRIS DAVIS has appeared in McCoy productions of *TWELFTH NIGHT*, *KILLING GAME* and in *THE RIVALS* as Bob Acres. He also appeared as Bel Affris in Theatre Memphis' production of *CAESAR AND CLEOPATRA*. Elsewhere he has been seen in *SWEENEY TODD*, *A MIDSUMMER NIGHT'S DREAM*, *CAT ON A HOT TIN ROOF*, *THE NEW MOON*, *1776* and *MAN OF LA MANCHA*.

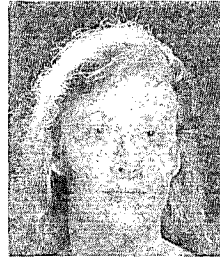


STACY LEE DeZUTTER was Lois Fisher in *THE CHILDREN'S HOUR* at the McCoy last year and played clarinet in the orchestra for *WONDERFUL TOWN*. She is a sophomore from Fern Park, Florida, majoring in Theatre and Psychology. In Florida, she performed in *THE GIFT* and *AMAH! AND THE NIGHT VISITORS*. She spent her summer working as an intern for the Civic Theatre of Central Florida in Orlando.

The Company (Cont.)



DESIREE EARL was last seen on our stage in *LITTLE MARY SUNSHINE* and appeared prior to that in *KILLING GAME* and *COWARDY CUSTARD*. She is a senior Voice major and a member of the Rhodes College Singers.

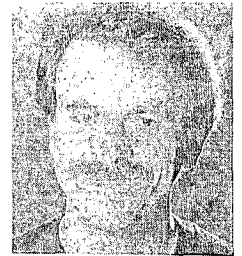


DEBORAH HARRISON is the Box Office Manager at the McCoy and appeared as Mrs. Squeers and Mrs. Crummles in *NICHOLAS NICKLEBY* here. Last season, she played May in Sam Shepard's *FOOL FOR LOVE* at Circuit and directed *THE REAL INSPECTOR HOUND* at Theatre Memphis Little Theatre. Other roles in Memphis theatres include Tracy Lord in *THE PHILADELPHIA STORY*, Melanie in *QUARTERMAINE'S TERMS*, Edward/Victoria in *CLOUD 9* and Blanche DuBois in *A STREETCAR NAMED DESIRE*. Deborah plans to move to New York in January.

LEIGH ANN EVANS appeared last season as Catherine in *THE CHILDREN'S HOUR* at the McCoy. On other stages, she has portrayed Kate Keller in *THE MIRACLE WORKER* and Olivia in *TWELFTH NIGHT* and has appeared in *THE REAL INSPECTOR HOUND*, *THE ADMIRABLE CRICHTON* and *SHE STOOPS TO CONQUER*. Leigh Ann is a junior English/Theatre major and a member of the McCoy's Public Relations team in charge of promotions.



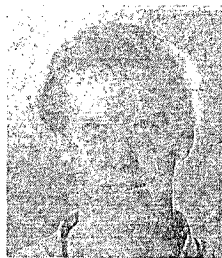
TONY ISBELL has been one of the busiest actors/directors in town lately, having done shows back-to-back for the past year or so. His most recent undertaking was the staging of Agatha Christie's *MURDER ON THE NILE* at Circuit Playhouse. He has also directed *THE DIARY OF ANNE FRANK* for Playhouse on the Square and *THE COLLECTION* at the Little Theatre. His onstage roles have been many and varied and include Eddie in *FOOL FOR LOVE*, Norman in *THE DRESSER* and Rich in *AS IS* at Circuit. Morris Townsend in *THE HEIRESS* at Theatre Memphis, Marc Antony in *JULIUS CAESAR* at Playhouse, and Austin in *TRUE WEST* at Little Theatre. Tony has also appeared in commercials and music videos and was the evil alien, "Mins" in *I WAS A ZOMBIE FOR THE FBI*, a movie which is gaining a large cult following.



PAJA FAUDREE has appeared at the McCoy in *WONDERFUL TOWN* and *TWELFTH NIGHT* and served as Assistant Stage Manager for *LITTLE MARY SUNSHINE*. She also worked on the crews of *THE RIVALS* and *THE CHILDREN'S HOUR*. Paja is a junior Biology major attending

Rhodes under a full academic scholarship. Her interests include running, playing piano and buying earrings.

BRYAN FORD is a senior Business Administration major at Rhodes who appeared as Frank Cheeryble, Mr. Lenville and Boy Mobbs in *NICHOLAS NICKLEBY* and was in the cast of *COWARDY CUSTARD*. He also served as Stage Manager for *THE CHILDREN'S HOUR*. Hometown roles include Basil Hallward in *THE PICTURE OF DORIAN GRAY* and Carleton Fitzgerald in *LIGHT UP THE SKY*. He is a member of Alpha Tau Omega fraternity and collects baseball cards.



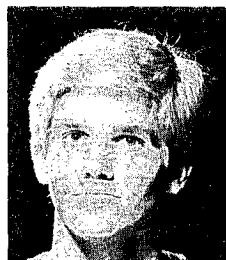
ANJEANETTE JONES was Rosalie Wells in *THE CHILDREN'S HOUR* at the McCoy last season, and ran lights for Pooh Kaye/Eccentric Motions when they came to Memphis as part of the McCoy Visiting Artists Series. In other theatres, she has performed in *YOU CAN'T TAKE IT WITH YOU*, *I REMEMBER MAMA*, *THE SOUND OF MUSIC* and *MY FAIR LADY*. "Ajay" is a Rhodes sophomore majoring in Theatre and Media Arts and has worked as an interpreter for the deaf.

The Company (Cont.)



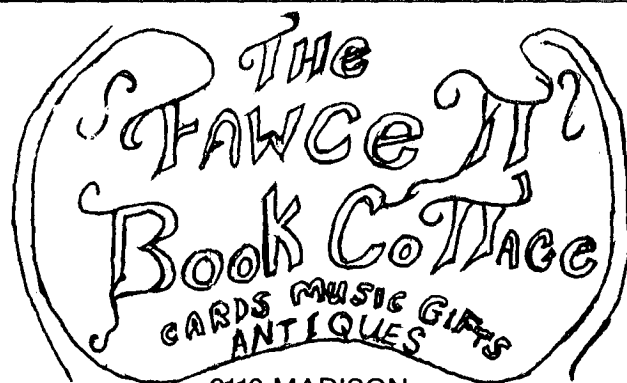
SARAH JONES last appeared at the McCoy as Nancy Twinkle in *LITTLE MARY SUNSHINE*. Before that, she performed in our productions of *WONDERFUL TOWN* as Mrs. Wade, in *THE GONDOLIERS* as Contadine, and in *TWELFTH NIGHT*. She turned in a memorable performance in our production of *COWARDY CUSTARD*. Sarah is a senior Theatre/Music major and member of the Rhodes College Singers.

JUDE KNIGHT is making a much-welcomed return to the Memphis stage after having left our city several years ago. Before her departure, she was a favorite leading lady in Theatre Memphis musicals, performing in *OH COWARD*, as Guenevere in *CAMELOT* and as Eliza Doolittle in *MY FAIR LADY*, the first production in their then-new facility in 1975. Since then, she has lived in Saudi Arabia, in Georgia, and in Alabama. She remained active in theatre during that time, playing Nancy in *OLIVER* for the Macon (GA) Little Theatre and La Mome Pistache in Dothan (AL) Little Theatre's *CANCAN*. We welcome this talented actress and singer to her McCoy debut and wish her a happy Memphis homecoming.



GREGORY K. KROSNES earned a Memphis Theatre award for Best Actor with his portrayal of Corporal Billy Jester in last season's *LITTLE MARY SUNSHINE*. This junior Theatre major has taken roles in *WONDERFUL TOWN*, *KILLING GAME* and *THE RIVALS*, as well as working on lighting and set crews here at the McCoy. He has onstage credits in *SLEEPING BEAUTY*, *THE BALD SOPRANO* and *ON THE 20TH CENTURY* at Poplar Pike Playhouse. Greg enjoys reading, drawing, acting and talking.

KYLE LEGG is returning to the McCoy stage after his hilarious portrayals in *NICHOLAS NICKLEBY*. His most recent stage credit was in the bumbling title role in *THE REAL INSPECTOR HOUND* at the Little Theatre and he kept everyone in stitches as four-year-old Cathy in *CLOUD 9* at Circuit. He also appeared in *THE PHILADELPHIA STORY* at Theatre Memphis and *THE BEST LITTLE WHOREHOUSE IN TEXAS* and *YOU'RE A GOOD MAN, CHARLIE BROWN* at Memphis State, where he is a senior. Kyle worked this summer as an entertainer at Six Flags Over Georgia.



2113 MADISON

HONEY-SWEETENED YOGURT
EXTRA-SPECIAL SANDWICHES

2109 MADISON
in Overton Square

OPEN: MON-SAT.
11:00 AM - 10:00 PM
SUNDAY 1-6 PM



DENON
DESIGN INTEGRITY

OPUS2

Serving Mid-South Audiophiles Since 1965.

The Company (Cont.)



LILLA MAGEE is an alumna of Rhodes and of the McCoy Theatre where she took on numerous roles in **NICHOLAS NICKLEBY** and played Kate in **THE TAMING OF THE SHREW**, Nellie in **SUMMER AND SMOKE**, Rosaline in **LOVE'S LABOUR'S LOST**, Essie in **YOU CAN'T TAKE IT WITH YOU**, Mary

Warren in **THE CRUCIBLE** and Miranda in **THE TEMPEST**. Lilla also appeared as Dull Gret and Angie in **TOP GIRLS** at Circuit and in **THE PHILADELPHIA STORY** at Theatre Memphis. By day, she is a display designer with Casual Corner.

PATTI MARSHALL is a senior Theatre/Media Arts major who last appeared on our stage in **WONDERFUL TOWN**. Before that, she put in appearances in **THE RIVALS** and **THE GONDOLIERS** and worked backstage on **SUMMER AND SMOKE** and **COWARDY CUSTARD**, for which she was also assistant choreographer. She was assistant director for **THE CHILDREN'S HOUR** and **SUMMER AND SMOKE**. Patti is a member of Mortar Board and is an Admissions Representative and the Sports Information Director for baseball here at Rhodes.



KRISTEN MURRAY, a Rhodes sophomore, is returning after her McCoy debut in **LITTLE MARY SUNSHINE**. She has community and high school credits in productions of **ANNIE GET YOUR GUN**, **PETER PAN**, **A FUNNY THING HAPPENED ON THE WAY TO THE FORUM** and **FIDDLER ON THE**

ROOF. Kristen is a member of the Rhodes College Singers, Kappa Delta sorority and Honor Council. She enjoys aerobics and plans to be a child psychologist.

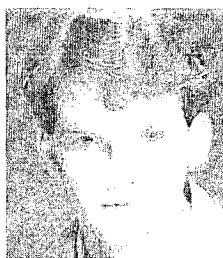
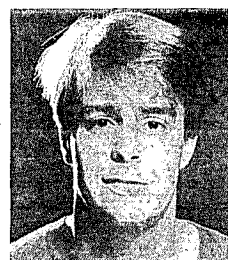
DETLEF SCHOLZ hails from Wyckoff, New Jersey, and is a Physics major at Rhodes. This will mark his first appearance on the McCoy stage, but he has performed in summer stock productions of **THE BUTLER DID IT**, **WEST SIDE STORY**, **THE LITTLE FOXES** and **THE SOUND OF MUSIC**. His interests include tennis and horseback riding.



ANN G. SHARP is an alumna who recently lent her talents to us in **SONDHEIM & SONDHEIM**, last year's benefit concert, and before that, she was the pie-baking Mrs. Lovett in **SWEENEY TODD**. Ann has also appeared in a number of musicals at Theatre Memphis, including **WHERE'S CHARLEY?**, **A LITTLE**

NIGHT MUSIC, **OH COWARD**, **THE KING AND I** (as Anna), and **KISS ME, KATE**. Ann recently appeared in the female version of **THE ODD COUPLE** at Germantown Community Theatre.

BRAD SHELTON appeared as a forest ranger in last season's **LITTLE MARY SUNSHINE**. He is a sophomore whose previous acting credits on other stages include the title role in **BYE, BYE BIRDIE**, Paul in **A CHORUS LINE** and Benjamin in **JOSEPH AND THE AMAZING TECHNICOLOR DREAMCOAT**, as well as roles in **SNOOPY** and **PILLOW TALK**. He likes to read, sing and play tennis.



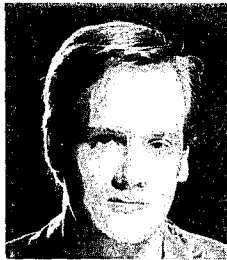
MARK LANDON SMITH is making his second appearance here since his 1986 Rhodes graduation. He played Frank Lippincott last season in **WONDERFUL TOWN** for us. Mark's undergrad performances at the McCoy are numerous and include Sir Andrew Aguecheek in **TWELFTH NIGHT**, Antonio in **THE**

GONDOLIERS, and roles in **COWARDY CUSTARD**, **NICHOLAS NICKLEBY**, **THE TAMING OF THE SHREW**, **THE APOLLO OF BELLAC** and **THE TEMPEST**. He has also been an instructor at Children's Theatre, an experience which has greatly enhanced his career as a producer of horror films. Mark is the new Box Office Manager at Theatre Memphis.

MARTY STORY has just returned from a summer stage management internship with the Wolftrap Foundation in Vienna, VA. We're sure the Wolftrap company was in capable hands, since she has been taking care of everyone at the McCoy for some time now. In addition to being our Stage Manager, she has been the Technical Director at Memphis Children's Theatre. Marty has appeared onstage in **TWELFTH NIGHT** and as Agatha in **THE CHILDREN'S HOUR**. Marty is a member of the Southeastern Theatre Conference.



The Company (Cont.)



MICHAEL UPDEGRAFF is a senior History major from Redington Beach, Florida. His McCoy roles include Joe in *THE CHILDREN'S HOUR*, King Ferdinand in *LOVE'S LABOUR'S LOST*, Faulkland in *THE RIVALS* and a very touching portrayal of Smike in *NICHOLAS NICKLEBY*. Michael

studied acting this summer at the HB Studio in New York. He is a member of the Fruit of the Month Club and lists his hobbies as Anne-Marie Akin.

LEIGH ANN VAUGHN was nominated for a Best Actress award at the Memphis Theatre Awards last season for her performance as the vindictive Mary Tilford in *THE CHILDREN'S HOUR*, her McCoy debut. Last year, she received the Mark Lee Stephens Memorial Scholarship for the outstanding freshman student of theatre at Rhodes. She has also appeared in her hometown of Huntsville, AL, in *THE GLASS MENAGERIE*, *ANNIE*, *ABSURD PERSON SINGULAR*, *THE FANTASTIKS*, *YOU CAN'T TAKE IT WITH YOU* and *JOSEPH AND THE AMAZING TECHNICOLOR DREAMCOAT*.

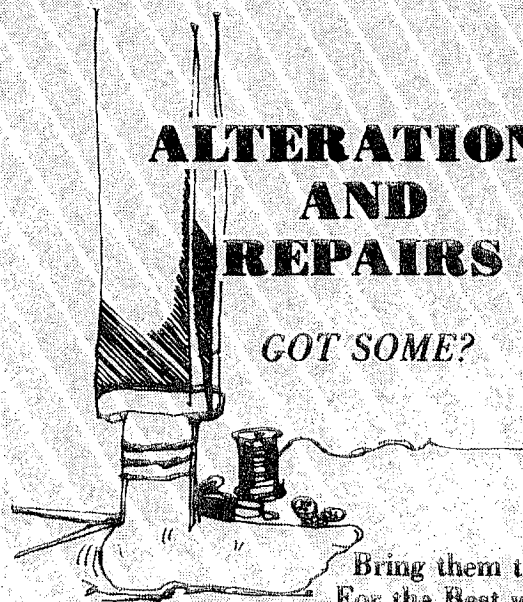


ERICA YODER has appeared at the McCoy in *LITTLE MARY SUNSHINE* and *WONDERFUL TOWN* and at Theatre Memphis as Nora in *BRIGHTON BEACH MEMOIRS*. Prior to these theatrical experiences, however, Erica had already begun quite an impressive career in dance. Her years as a dancer

have seen her in principal roles in the Memphis, Richmond (VA) and Fort Wayne (IN) Ballets and two seasons with the prestigious Joffrey II in New York. She is also Director of the student Public Relations program for the McCoy, a member of the Rhodes College Singers, and is an active member of the Committee for Social and Political Action here at Rhodes.

ALTERATIONS AND REPAIRS

GOT SOME?



Bring them to us
For the Best work
anywhere.

When you care enough . . .
to look your very best!

*University Park
Cleaners*

FASHION CARE SINCE 1919 613 N. McLEAN