

THE

1
9
4
7

L
Y
N
N
X


The 1947 Lynx



SOUTHWESTERN
AT MEMPHIS

Editor LILY ANNE BEGGS

Business Manager VIRGINIA ANNE WITHERS



*For his undying devotion to the ideals
of Southwestern and his loving guidance
of her countless sons and daughters.*

We humbly dedicate the 1947 Lynx

to

PRESIDENT CHARLES E. DIEHL



DR. CHAS. E. DIEHL
President

To the Class of 1947:

It was a tense, fearsome, and uncertain time in September, 1943, when fifty-five men and ninety-eight women enrolled as members of this class. During the past four years we have been awed and sobered by world-shaking happenings. Able prophets had told us that we were living at the end of an age, but we found it difficult to believe them and to adjust ourselves to this idea.

On August 6, 1945, however, when the first atomic bomb was dropped on Hiroshima, we were stunned into a realization that the curtain had risen upon a new world drama, one in which not only we, but many others hitherto almost unknown, would be the chief actors.

Science gave us the atomic bomb, but, since it is admitted that there is no technological defense from its ravages, science cannot give us that "One World" of righteousness and understanding, of kindness and goodwill, without which there can be no hope that the play will be other than a terrible tragedy. However important are the political, the economic, and the social problems, the major problem of our time is fundamentally ethical. The only answer to atomic power is moral power, and the Golden Rule; is the one true plumb line.

Some of the original members of this graduating class have given their last full measure of devotion, and will never return. They died that we might live and labor to fashion a united world, one in which all men will strive to follow the Scriptural injunction "to do justly, to love mercy, and to walk humbly with thy God." Each one of us shares in the opportunity and responsibility of this epoch-making period.

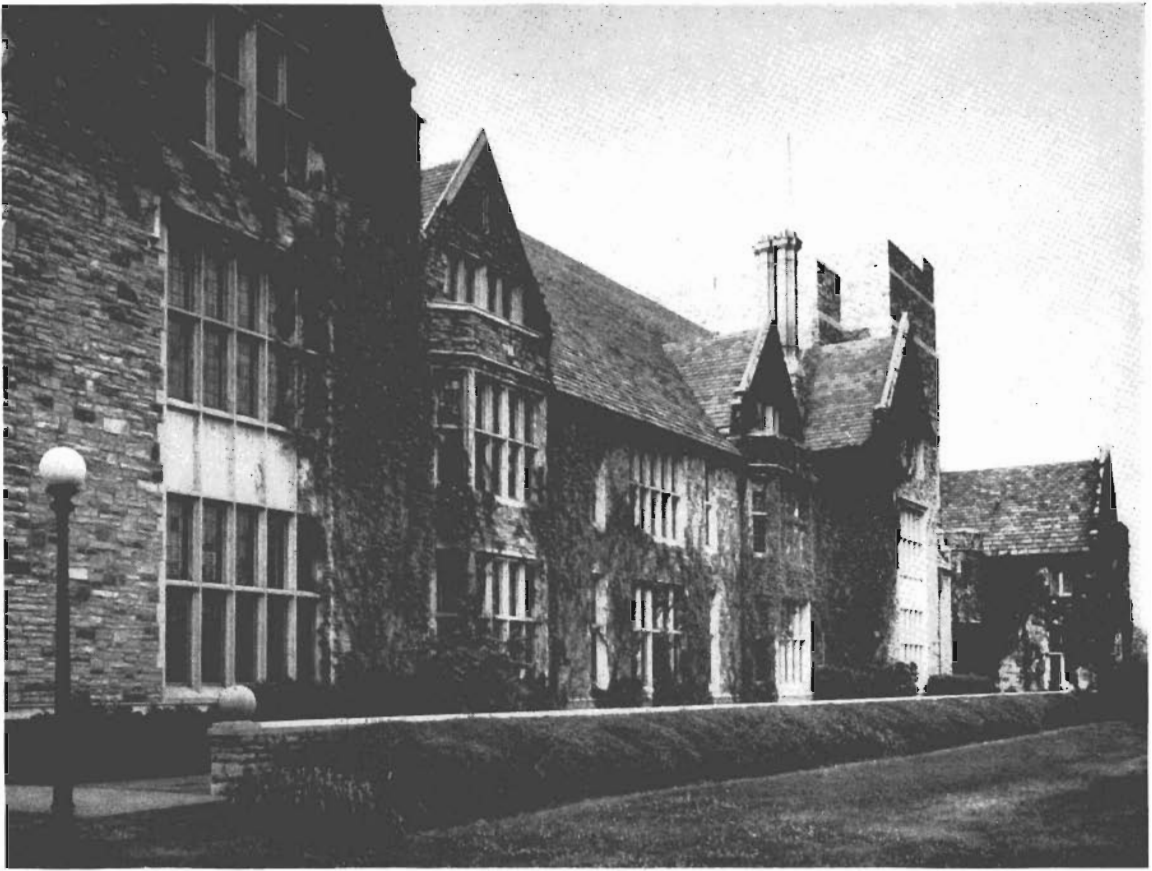
To all those who are, or were, members of this Class, we wish to extend our good wishes and our affectionate regard. We express the high hope that they, and we, may have the vision and the courage boldly to seek peace and perseveringly to pursue it; that all of us may be prepared to make sacrifices for the sake of a just and enduring order as readily as we made sacrifices in time of war, until suspicion, mistrust, fear, and hatred are banished from the world of God our Father.

Chas. E. Diehl

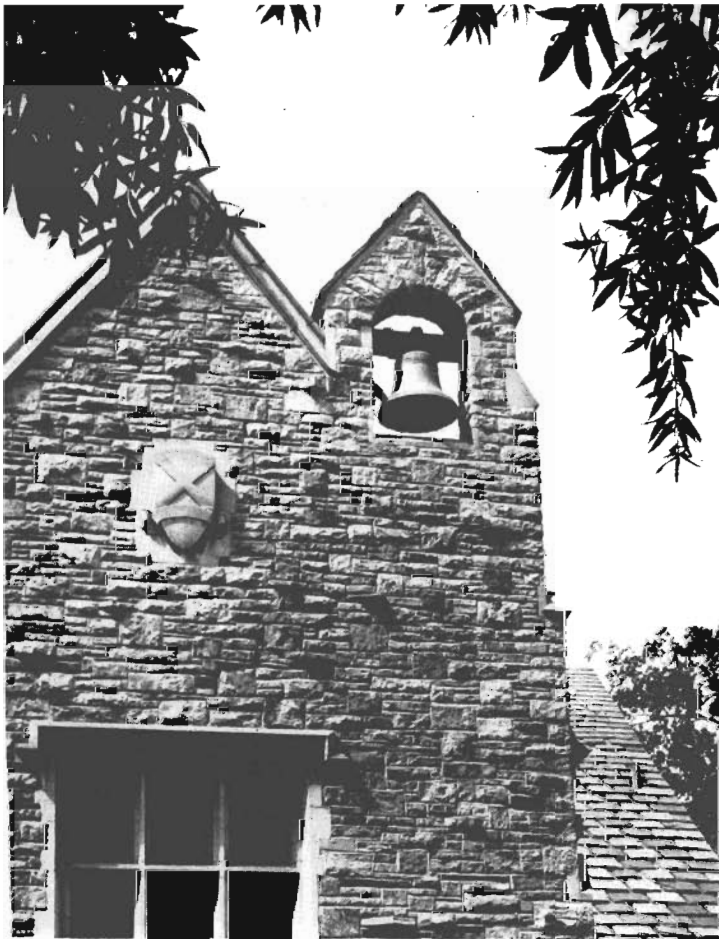
Alma Mater



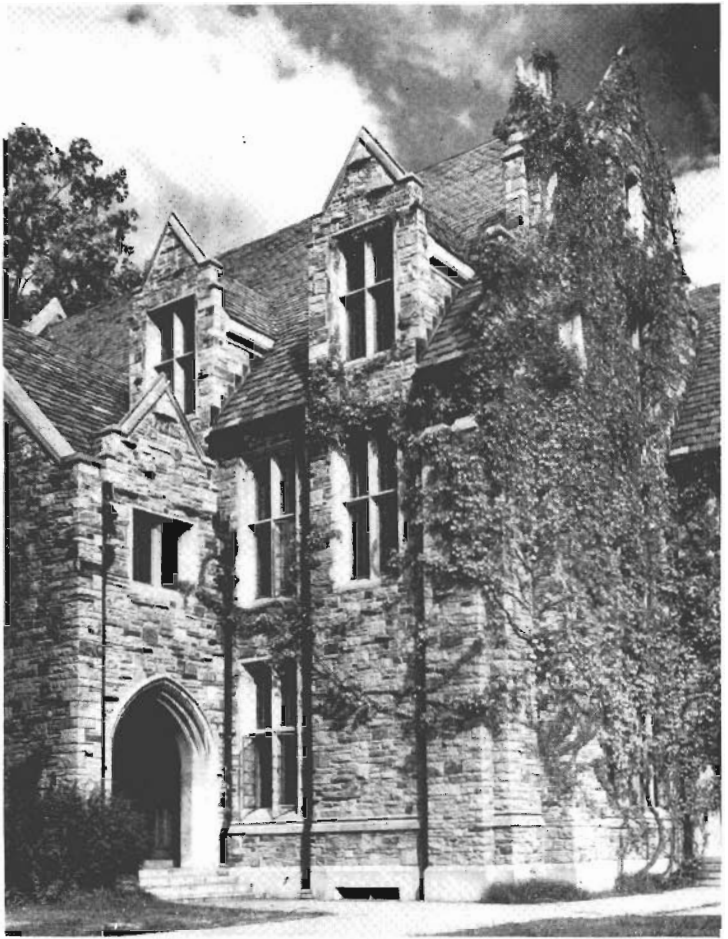
SCHOOL



PALMER HALL



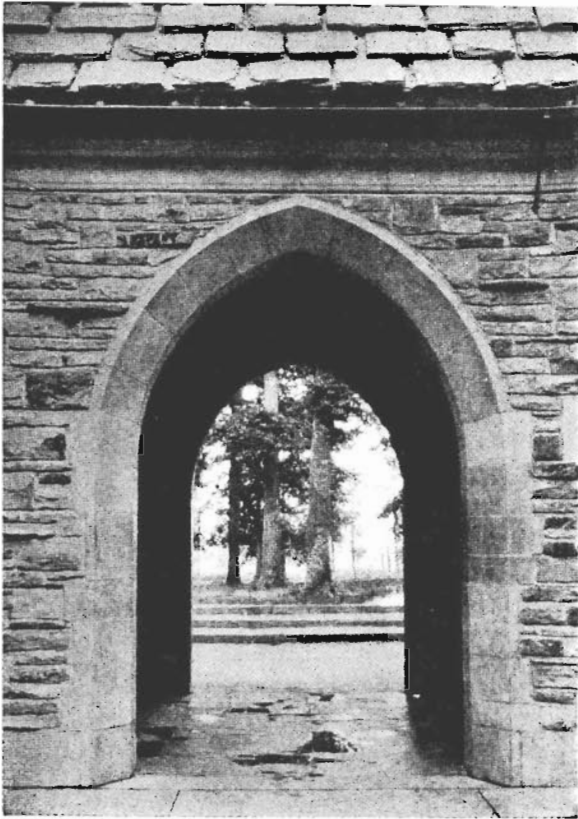
THE BELL TOWER



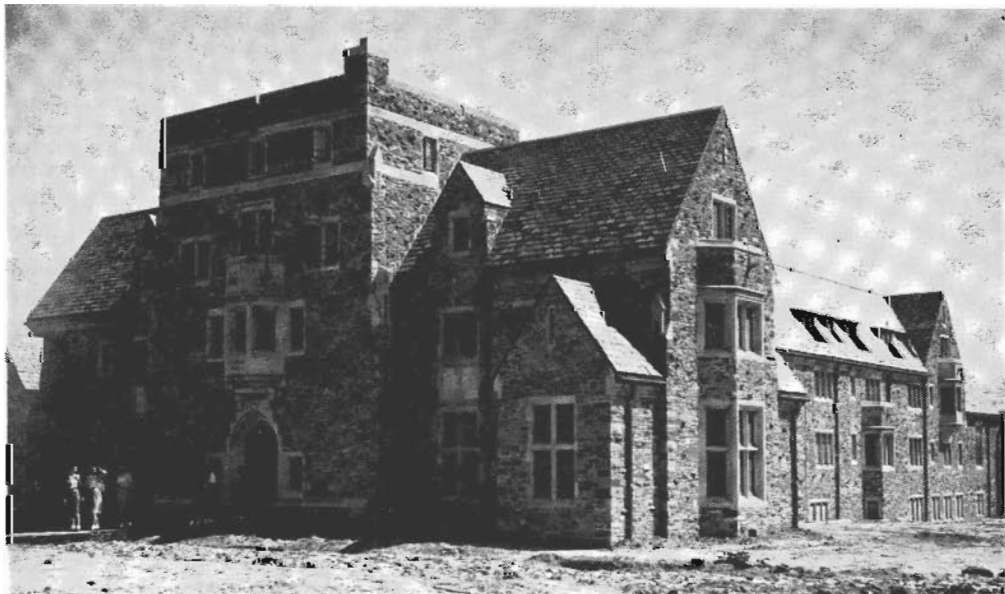
SCIENCE HALL



NORTH OF PALMER HALL



DINING HALL ARCH



VOORHIES
HALL

WHITE HALL



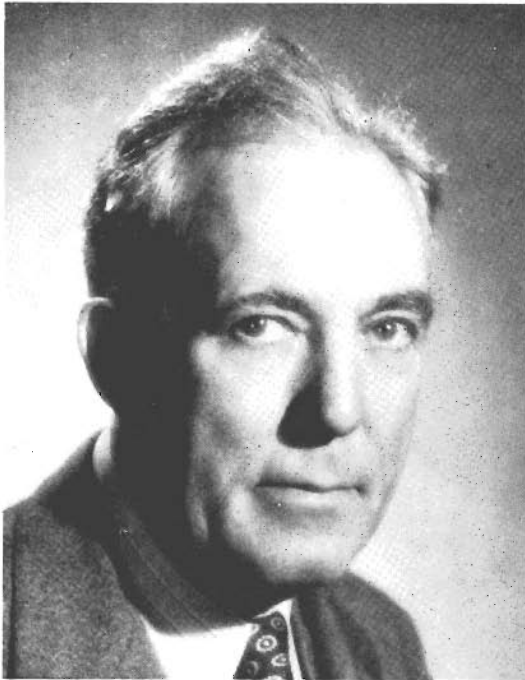
ASHNER GATEWAY



THE DEANS



A. THEODORE JOHNSON, A.M., Ph.D.
Professor of English
Dean of the College



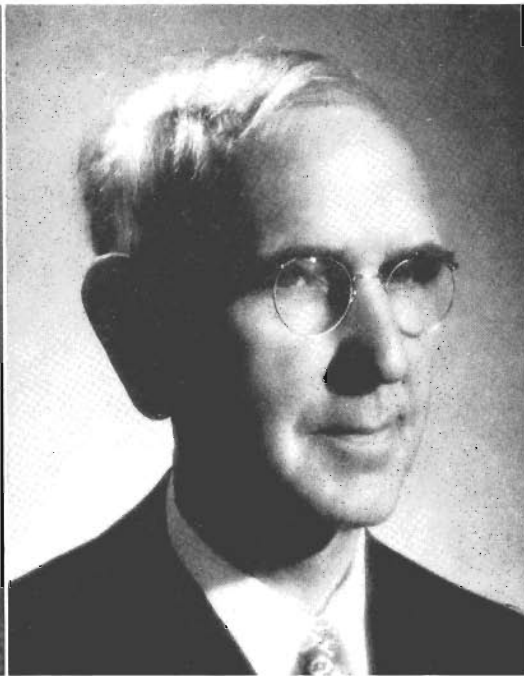
W. R. COOPER, A.M., LL.B.
Professor of History
Dean of Men



MARGARET HUXTABLE TOWNSEND, M.A.
Associate Professor of Sociology
Dean of Women



HELEN GORDON, A.M.
Instructor in Psychology
Associate Dean of Women



ROBERT S. POND, A.M., Ph.D.
Associate Professor of Mathematics
Dean of Freshmen

FACULTY



DAVID M. AMACKER, M.A.
A.B., Princeton University;
B.A. and M.A., Oxford University.
Professor of Political Science

CLINTON L. BAKER, M.S., Ph.D.
B.S. and M.S., Emory University;
Ph.D., Columbia University.
Professor of Biology



JOHN R. BENISH, A.M.
A.B., Arkansas College;
A.M., Vanderbilt University.
Assistant Professor of English

JOHN M. DAVIS, M.A., Ph.D.
A.B., University of Kentucky;
B.A. and M.A., Oxford University;
Ph.D., University of Chicago.
Professor of History
The J. J. McComb Chair



JOE OTIS EMBRY, A.M., Ph.D.
A.B., Drury College;
A.M., State University of Iowa;
Ph.D., University of Minnesota.
Associate Professor of Romance Languages

JESSIE GROSSNICKLE, A.M.
A.B., Mississippi State College for Women;
A.M., Texas State College for Women.
Assistant Director of Physical Education
and Intramural Sports for Women



RALPH C. HON, A.M., Ph.D.
A.B., University of Illinois;
A.M., Harvard University;
Ph.D., University of North Carolina.
Professor of Economics and Business Administration

ALEXANDER P. KELSO, B.D., M.A., D.D.
A.B., Washington and Jefferson College;
B.D., Western Theological Seminary;
B.Sc. and M.A., Oxford University.
Professor of Philosophy and Christian Ethics.
The R. A. Webb Chair



JOHN H. KENT, M.A., Ph.D.
B.A. and M.A., Queen's University;
Ph.D., University of Chicago.
Associate Professor of Latin

LAURENCE F. KINNEY, A.M., Ph.D.
A.B., Hampden-Sidney College;
B.D., Union Theological Seminary;
A.M. and Ph.D., University of Virginia.
Professor of Bible
The Albert Bruce Curry Chair

FACULTY

LOUIS G. LOCKE, A.M., Ph.D.
 A.B., Bridgewater College;
 A.M. and Ph.D., Harvard University.
 Associate Professor of English

ROBERT LORENZ, Ph.D.
 Diploma, University of Breslau;
 Ph.D., Columbia University.
 Associate Professor of Economics

MARION LEIGH MacQUEEN, A.M., Ph.D.
 A.B., Southwestern;
 A.M., University of Wisconsin;
 Ph.D., University of Chicago.
 Professor of Mathematics

M. FOSTER MOOSE, B.S., A.M., Ph.D.
 B.S., Memphis State College;
 M.A., and Ph.D., Columbia University.
 Associate Professor of Chemistry

JOHN OSMAN, A.M.
 A.B., Presbyterian College;
 B.D. and Th.M., Union Theological Seminary;
 A.M., University of Richmond.
 Director of Adult Education
 and Assistant Professor of Philosophy

MARION E. PORTER, A.M., Ph.D.
 A.B., Washington and Lee University;
 A.M., and Ph.D., Princeton University.
 Assistant Professor of Romance Languages

W. TAYLOR REVELY, B.A., B.D.
 B.A., Hampden-Sidney College;
 B.D., Union Theological Seminary.
 College Pastor

PEYTON NALLE RHODES, A.M., Ph.D.
 A.B., A.M., Ph.D., University of Virginia.
 Professor of Physics

THOMAS A. SCHAFER, A.B., B.D.
 A.B., Maryville College;
 B.D., Louisville Presbyterian Seminary.
 Assistant Professor of Bible

ARLO I. SMITH, M.S., Ph.D.
 A.B., Hendrix College;
 M.S., Northwestern University;
 Ph.D., University of Washington.
 Associate Professor of Biology

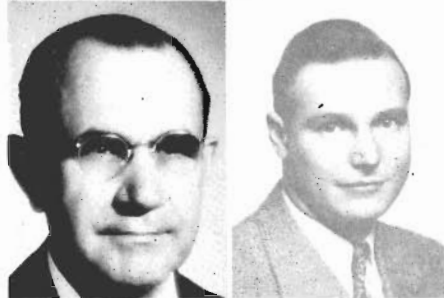


FACULTY



GORDON D. SOUTHARD, A.M.
 A.B., College of Wooster;
 A.M., State University of Iowa.
 Assistant Professor of Romance Languages

MARTIN W. STORN, A.M., Ph.D.
 A.B., Wartburg College;
 A.M., University of Washington;
 Ph.D., University of Illinois.
 Professor of Romance Languages



ROBERT P. STRICKLER, Ph.D.
 A.B., West Virginia University;
 1907-1910, Oxford University;
 Ph.D., Johns Hopkins University.
 Professor of Greek

WILLIAM E. THOMPSON, B.S.
 B.S., University of Alabama.
 Laboratory Instructor in Chemistry



GEORGE F. TOTTEN, A.M.
 A.B., Wayne University;
 A.M., University of Michigan.
 Assistant Professor of Speech and Dramatics

FELIX M. WASSERMANN, Ph.D.
 Student at Universities of Heidelberg and Munich;
 Ph.D., University of Freiburg.
 Assistant Professor of Geography and Modern Languages



JAMES L. A. WEBB, Ph.D.
 B.S., Washington and Lee University;
 Ph.D., Johns Hopkins University.
 Associate Professor of Chemistry

OLIVE E. WESTBROOKE, A.M.
 A.B., Goucher College;
 A.M., University of Chicago.
 Assistant Professor of Psychology



ROY L. DAVIS
 Secretary of Public Relations

C. L. SPRINGFIELD
 Bursar

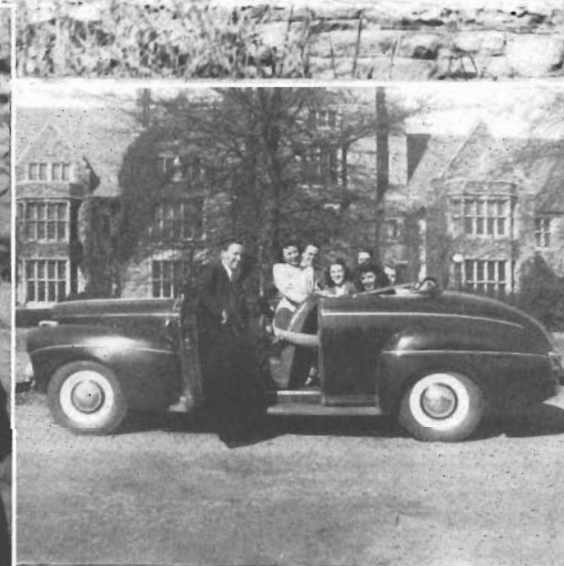
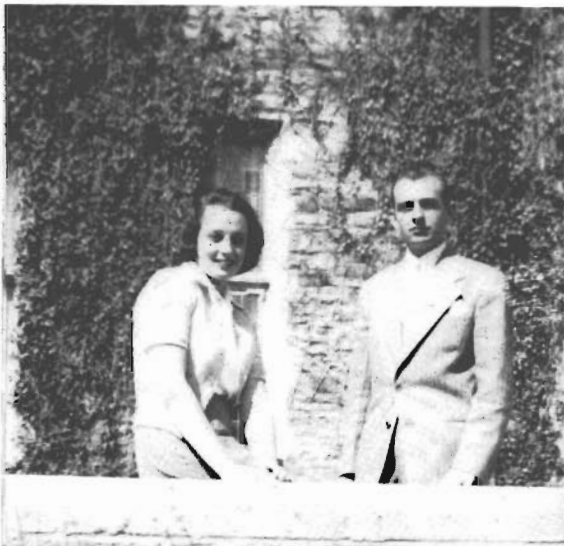
Stairway to the Stars



C
L
A
S
S
E
S

Mickey Dougherty '47

Can't we



THE SENIOR CLASS



CLASS OFFICERS

President	MARY LANGMEAD
Vice-President	MAY WALLACE
Secretary-Treasurer	VIVIAN QUARLES

SENIORS

Milton C. Addington

Memphis

Alpha Tau Omega, Pledge Master 4; Sou'wester Staff 1, 2; Stylus 1, 2, 3, 4, Editor of Stylus Journal 4; Omicron Delta Kappa 4; Winner of Short Story Contest at Blue Mountain Literary Festival 4; Candidate for degree with distinction in Psychology.



Melvin Bernstein

Memphis

Betty Bouton

Memphis

Transfer from Brenau, 2; Delta Delta Delta, Publicity Chairman, 2, Pan-Hellenic Representative, 3, President, 4; Y.W.C.A., 2, Treasurer, 3, President 4; Pi Intersorority, May Day Pi 2, Low Pi 4; Fashion Editor Sou'wester 3; Nitist Club, Secretary Treasurer, 2; Valentine Queen 2; Most Stylish Coed 3; Queen of April Fool Court, 3, 4; Student Counsellor 3; Elections Commission 4; Women's Pan-Hellenic Council, Vice President 4; Homecoming Queen 4; Student Welfare Committee 4; Women's Undergraduate Board 4; Christian Union Cabinet 4; Hall of Fame.



Cham Canon

Maude, Mississippi
Sigma Alpha Epsilon

Jeanne deGraffenreid

Memphis

Independent Women, Vice President 2, President 3; Y.W.C.A. 1, 2, 3; Sou'wester Staff, 1, 2, 3, 4; War Relief Committee, 1; Spanish Club, 1; President Shakespeare Club, 1; Nitist Club 2; Alpha Theta Phi 4; Stylus 3, Secretary 4; Elections Commission 4; Candidate for degree with distinction in History.



Norma Estes

Martin, Tennessee

Delta Delta Delta, Marshal 4; Y. W.C.A., 1, 2, 3; Canterbury Club 2; Nitist Club 2; Chapel Pianist 3, 4.

Ernest Flaniken

Memphis

Alpha Tau Omega, Chaplain, 4; Ministerial Club 1, 2, 3, 4; President 2; Vice President, Omicron Delta Kappa 4; Players 3, Secretary Treasurer 4; Alpha Theta Phi 4; Southwestern Singers 1, 2, President 4; Christian Union Cabinet 2; Elections Commission 3; Winner of Belk Bible Medal 1; Spencer Greek Prize 1, 2; President of Student Body and Student Council 4; Hall of Fame; Regional Candidate for Rhodes Scholarship; Alpha Theta Phi awards for highest honors in freshman and sophomore classes; Candidate for degree with Honors in History.



Leone Flaniken

Memphis

Transfer Lindenwood College 3; Alpha Omicron Pi 3, Recording Secretary 4.

SENIORS

Maynard Fountain, Jr.

Greenwood, Mississippi

Sigma Alpha Epsilon, President 3; Sou'wester Staff 1, 2; Lynx Staff 2; Elections Commission 2, 3; Honor Council 2, 3, 4; Vice President Student Body 2; President Student Body 3; Men's Pan-Hellenic Council 3; April Fool Carnival Court 3; Who's Who in American Colleges and Universities 3; Omicron Delta Kappa 3, 4; Christian Union Cabinet 4; Student Welfare Committee 4; Hall of Fame.



Louise Frank

Memphis

Delta Delta Delta, Social Chairman 3, Historian 4; Y.W.C.A. 1, 2, 3; Canterbury Club 2; Sou'wester Staff 2, 3.

Cleighton Gannon

Memphis



Mary Gideon

Memphis

Delta Delta Delta, Scholarship Chairman 2, Librarian 3, 4; Y.W.C.A. 1, 2, 3; W.A.A., Secretary 2, President 4; Chi Beta Phi 4; Secretary Treasurer of Junior Class; Torch 4; Christian Union Cabinet 3, 4; Student Counsellor 4; Women's Undergraduate Board, Secretary 4.

Evelyn Givens

Memphis

Alpha Omicron Pi

Candidate for degree with Distinction in Spanish.



Jacqueline Goodman

Memphis

Betty Lee Hancock

Memphis

Alpha Omicron Pi 1, 2, Rush Chairman 3, Pan Representative 4; S.T. A.B. 1, 2, 3, 4, Founder's Day Member 1, President 4; Women's Pan-Hellenic Council 4; Y.W.C.A., 1, 2, 3, 4; Most Stylish Coed 1; Queen of State Track Meet 4.



Catherine Harrison

Hopewell, Virginia

Transfer from Montrest College 3; Y.W.C.A. 3, Vice President 4; Southwestern Singers 3; Christian Union Cabinet 4; Dormitories Governing Board, Secretary 4; Student Counsellor 4; Candidate for degree with Distinction in Philosophy.

SENIORS

James Conley Hemmen

Memphis

Sigma Nu, Secretary 3, President 4; "S" Club; Basketball Team 1, 3; Football Team 1, 2, 3; Golf Team 3, 4.



Carolyn Hesselbein

Memphis

Dorothy Hogan

Memphis

Zeta Tau Alpha, Guard 2, Secretary 3, President 4; Y.W.C.A. 1, 2, 3, 4; Pi Intersorority 4; Women's Pan-Hellenic Council, President 4; Women's Undergraduate Board 4; Elections Commission 4; Canterbury Club 2, 3; Student Council 4; Spanish Club 1, 2, 3, 4; All-Star Basketball, second team, 4.



Thomas Houser

Dyersburg, Tennessee

Vice President Freshman Class; President Kappa Sigma Pledges 1; Football team 4; Lord-in-Waiting of April Fool Court 4; Publications Board 4; Christian Union Cabinet 4; "Most Handsome Boy" 4; Vice President Kappa Sigma 4.

Claire James

Memphis

Alpha Omicron Pi, Pledge Treasurer 1, Corresponding Secretary 3, Vice President 3, President 4; Basketball team 1, 2, 3, 4; Pi Intersorority 3, 4; W.A.A. 1; Y.W.C.A. 1, 3, 4; Sou'wester Staff 1, Society Editor 2, 3, 4; Spanish Club 2, 3, 4; Elections Commission 4; S.A. B.A. 3, Vice President 4; Member April Fool Court 4; Women's Pan-Hellenic Council 4.



Robert Jones

Boca Raton, Florida

Wharton S. Jones

Memphis

Sigma Alpha Epsilon



Jean Langhart

Memphis

Transfer L.S.U. 3; Delta Delta Delta, House Chairman 4; Y.W.C.A. 3, 4; Canterbury Club 3.

SENIORS

Mary Langmead

McClelland Field, California

Kappa Delta, Most Outstanding Pledge 1; President 4; Pi Intersorority, May Day Pi 1, Low Pi 3, High Pi 4; President of Freshman, Sophomore, Junior, and Senior, Classes, Sou'wester Staff 1, 2; Women's Dormitory Governing Board 1, 2, 3, Vice President 4; Student Council 1, 2, 3, 4; Spanish Club 2, 3, 4; Women's Undergraduate Board 2, 3, President 4; Treasurer Women's Pan-Hellenic Council 4; Honor Council 4; Student Welfare Committee 4; Torch 4; Hall of Fame; Candidate for degree with Distinction in Psychology.



Peggy Laughter

Memphis

Zeta Tau Alpha, Pledge Scholarship Award 3; Y.W.C.A. 1, 2, 3, 4; Southwestern Singers 1, Vice President 2, 3, 4; Sou'wester Staff 3, 4.



Katherine Lynch

Collierville, Tennessee

Delta Delta Delta, Social Chairman 2, Rush Chairman 3, Vice President 4; Y.W.C.A. 1, 2, 3, 4; Canterbury Club, President 2; Healers 1; Lynx Staff 1; Southwestern U.S.O. 2; Honor Council 3, Secretary 4; Women's Undergraduate Board 3, 4, Secretary 3; Women's Dormitory Governing Board, Secretary 3, President 4; Student Council 3, 4; Student Counsellor 3, 4, Assistant Chairman 3; Torch, Vice President 4.



Laverne Lazarov

Memphis

Independent Women; Secretary Treasurer of Alpha Theta Phi 4.



James Robertson McQuiston

Memphis

Alpha Theta Phi 4; Honor Council, Summer Session 2; Omicron Delta Kappa 3, 4; Candidate for degree with Honors in English.



Mary Frances McDearman

Memphis

Kappa Delta



Robert Mann

Memphis

Sigma Alpha Epsilon, Corresponding Secretary 2; Canterbury Club 1, 2, 4; Vice President 2; Candidate for degree with Distinction in History.



Catherine Martin

Memphis

Zeta Tau Alpha

SENIORS

Virginia Morgan

Memphis

Y.W.C.A. 1, 2, 3, 4; Independent Women 1, 2, Secretary 3, Treasurer 4.



Carol Morris

Paris, Tennessee

Transfer from Gulf Park College 2; Delta Delta Delta, Activities Chairman 3, Secretary 4; Nitist Club 2; Canterbury Club 2; Heelers 2; Y. W.C.A. 2, 3, 4; Spanish Club 2, 3; Student Counsellor 3, 4; W.A.A. Vice President 3; Alpha Theta Phi 4; Chi Beta Phi 4.



Hays E. Owen, Jr.

Memphis

Sigma Alpha Epsilon, President pledge group 1, Treasurer 2, Vice President 2, Pledge Master 3; Christian Union Cabinet 1, 2; Spanish Club 2; "S" Club 2, Vice President 4; Varsity Basketball 1, 2; Alpha Theta 4; Omicron Delta Kappa, Cup for outstanding sophomore man 2, member 4; Alpha Theta Phi award for highest honors in sophomore class.

Mary Virginia Morris

Ventnor, New Jersey



Peggy Parsons

Memphis

Kappa Delta, Social Chairman 2, Treasurer 3, Secretary 4; Lynx Staff 2, 3, 4; Sou'wester Staff 2, 3; Nitist Club, 2, 3; Y.W.C.A. 1, 2, 3; Heelers 2, 3.

Joseph Hunter Phillips

Memphis

Sigma Alpha Epsilon

Virginia Prettyman

Covington, Tennessee

W.A.A. 2, 3, 4; Southwestern Singers 1, 2, 3, 4; Sou'wester Staff 1; Canterbury Club 2; S.A.B.A. 3, 4; French Club 4; Independent Basketball team 1, 4; Y.W.C.A. 1, 2, 3, 4.



Ann Pridgen

Memphis

Alpha Omicron Pi, Herald 2, Rush Chairman 3, Vice President 4; Lynx Staff 1, 2; Sou'wester Staff 1, Associate Editor 2, Circulation Manager 3, 4; Spanish Club 1, 2, 3, Treasurer 4; Y.W.C.A. 1, 2, 3; S.T.A.B. 4.

SENIORS

Vivian Quarles

Transfer from Judson College 3; Alpha Omicron Pi, Pledge Treasurer 3, Corresponding Secretary 4; Candidate for degree with Distinction in Spanish.



Ed Quinn
Memphis
Pi Kappa Alpha

Mary Louise Rhea

Somerville, Tennessee

Zeta Tau Alpha, Standards Chairman 2, Treasurer 3, Corresponding Secretary 4; Chi Beta Phi 3, Treasurer 4; Sou'wester Staff 3; Canterbury Club 3; Y.W.C.A. 1, 2, 3, 4.



David A. Ruffin
Covington, Tennessee

H. L. Schuman

Memphis



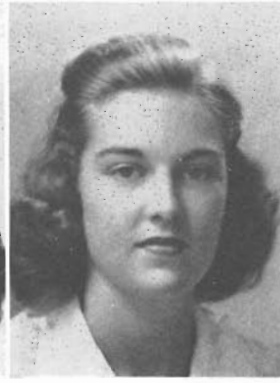
Alice Scott
Memphis

Delta Delta Delta, Treasurer 4; Y.W.C.A. 1, 2, 3, 4; Canterbury Club 3; Lynx Staff 2; Student Counsellor 4.

Nancy Scott

Shreveport, Louisiana

Delta Delta Delta Social Chairman 3, Corresponding Secretary 4; Lynx Staff 1, 2; Y.W.C.A. 1, 2, 3; Canterbury Club 1, 2.



Jane Williams Sides
Tunica, Mississippi

Delta Delta Delta, Vice President of Pledges 1, Best Pledge 1, Historian 2, Vice President 3; Y.W.C.A. 1, 2; Spanish Club 2; Canterbury Club 2, 3, President 3; Christian Union Cabinet 3; Student Counsellor 2, 3; Lynx Staff 1.

SENIORS

Betty Sikking

Louisville, Kentucky

Transfer from University of Louisville 3; Y.W.C.A. 3, 4; Southwestern Singers 3; Independent Women 3, 4.



Harland L. Smith

Collierville, Tennessee

Football 1, 4; Basketball 1, 2, 4; Track 2; Publications Board 2; Kappa Alpha, Corresponding Secretary 3; Intramural Board 4; Omicron Delta Kappa 4.

William Speros

Memphis

Sigma Nu, Vice President 2, President 3, 4; Men's Pan-Hellenic Council 2, 3, 4; Varsity Football 1, 3, 4; Varsity Track 3, 4; "S" Club 1, 2, 3, President 4; President of Men's Intramural Board 3; Intramural All-Star Basketball Team 4; Service Club, 2, 3; Best All-Round Boy 4; Hall of Fame 4.



Sam Stephenson

Memphis

Kappa Sigma, Secretary 2; Vice President 3; President 4; Men's Pan-Hellenic Council 4; Honor Council 3; Band 1, 2; Sou'wester Staff 1; Vice President Junior Class.

Robert E. Stobaugh

Martin, Tennessee

Kappa Sigma, Treasurer 2, Historian 1, 4; Student Council 4; Vice President Alpha Theta Phi 4; President Chi Beta Phi 4; President Omicron Delta Kappa 4; Second honor student in freshman class; second honor student in junior class; William Spadow Scholarship in Chemistry 4; candidate for degree with honors in Chemistry.



William F. Symes

Memphis

Kappa Alpha

Mayme W. Tate

Laurel, Mississippi

Zeta Tau Alpha; President of Freshman Dormitory; Women's Dormitory Governing Board 1; Sou'wester Staff 1; Pi Intersorority 2, 3, 4; Secretary-Treasurer of Sophomore Class; Alpha Theta Phi 4; French Club 4.



Thomas T. Tidwell

Memphis

Kappa Alpha

SENIORS

William A. Turner

Dresden, Tennessee

Alpha Tau Omega, President 3, 4; Band 1, 2, President 3; Men's Pan-Hellenic Council 3, 4.



Irma Waddell

Memphis

Chi Omega, Pledge scholarship cup 1; Choir 1, 2; Sou'wester Staff 1, Associate Editor 2; Stylus 2, 3, 4, Vice President 3; Secretary Elections Commission 4; Editor Lynx 3; Secretary Treasurer Torch 4; President Alpha Theta Phi 4; President Publications Board 4; Tri-Delta freshman scholarship award 1; Alpha Theta Phi, First Place Scholarship Awards 1, 2, 3; Y.W.C.A. 1, 2, 3, 4; Student Counsellor 3; Student Council 3, 4.

May Wallace

Memphis

Chi Omega, Pledge Treasurer 1, House Chairman 2, Secretary 3, Vice President 4; Sou'wester Staff 1, Circulation Manager 2, 3; Lynx Staff 1, 2, 3; Y.W.C.A. 1, 2, 3; Nitist Club 3; Stylus 3, 4; Alpha Theta Phi 4; Torch, President 4; Student Council 4; Women's Undergraduate Board, Vice President 4; Student Counsellor 3, 4; Vice President of Senior Class.



Betty Bynum Webb

Fort Worth, Texas

B.A., Southwestern, 1946; Kappa Delta, Cultural Programs Chairman 3, Editor 4, Secretary 4, Vice President 5; Y.W.C.A. 1, 2, 3, 4, Cabinet 3; Southwestern Singers 1, 2, 3, 4, 5, Secretary 4, Assistant Conductor 5; Franco-German Club 1; Alpha Psi Omega 5; Sou'wester Staff 3, Music Editor 4; Alpha Theta Phi 4, 5; Christian Union Cabinet 4; K.D. basketball team 3, 4, 5; Dream Girl of PiKA 5.

Julia Wellford

Memphis

Chi Omega, Chapter Correspondent 2, Treasurer 3, President 4; Women's Pan-Hellenic Council 3, Secretary 4; Christian Union Cabinet 2, Vice President 3, 4; Sou'wester Staff 1, 2; Y.W.C.A. 1, 2, 3, 4, Cabinet 2, 3; Honor Council 1, 2, 3, 4, President 2, 3; May Day Pi 3; Southwestern Singers 1, 2, 3; Torch 4; Torch award for outstanding sophomore woman; Alpha Theta Phi 4; Secretary-Treasurer of Student Body 4; Student Council 2, 3, 4; Canterbury Club 2, 3; Student Counsellor 2, 3, 4; April Fool Court 4; Hall of Fame.



John Wilson

Transfer from Mississippi State 3; Alpha Tau Omega, Treasurer 4; Ministerial Club 3, President 4; Christian Union Cabinet 4; Men's Pan-Hellenic Council 4; Elections Commission 4; Omicron Delta Kappa 4.

Maude Young

Memphis





THE JUNIOR CLASS



CLASS OFFICERS

President	BLAIR WRIGHT
Vice-President	BOB AMIS
Secretary-Treasurer	LUCILLE HAMER

JUNIORS



ROBERT AMIS
New Orleans, Louisiana
Kappa Sigma



CATHERINE ARNOLD
Birmingham, Alabama
Alpha Omicron Pi



J. H. ARNOLD
Kappa Alpha
Memphis



DEAN BAILEY
Kappa Alpha
Memphis



PEGGY BAKER
Leland, Mississippi
Chi Omega



PAUL BATSON
Memphis



BEVERLY BEANE
Chi Omega
Memphis



LAWRENCE BECK
Memphis



LILY ANNE BEGGS
Alpha Omicron Pi
Memphis



JAMES BLANKENSHIP
Monette, Arkansas
Kappa Sigma



WILLIAM BOWDEN
Birmingham, Alabama



BETTY JO BRANTLEY
Zeta Tau Alpha
Memphis

JUNIORS

AMELIA BRENT Heth, Arkansas
Delta Delta Delta

JOHN BRODERICK Memphis
Sigma Alpha Epsilon

HAZEL BROWN Leland, Mississippi
Delta Delta Delta

BARBARA BURNETT Decatur, Indiana
Zeta Tau Alpha

MARTHA CARROLL Memphis
Chi Omega

HARRIET CAUSEY Cleveland, Mississippi
Delta Delta Delta

JOAN COGSWELL Memphis

CAROLYN CUNNINGHAM Arlington, Tennessee
Chi Omega

MARY BELLE CURRIER Paris, Tennessee
Chi Omega

JOAN DAVIES Cardiff, South Wales

LEONA DeMERE Memphis
Kappa Delta

MICKEY DOUGHERTY Memphis
Alpha Omicron Pi



JUNIORS



JOHN DOUGLAS Arlington, Tennessee
Sigma Alpha Epsilon



DOROTHY FULLER Birmingham, Alabama



PEGGY GALLIMORE Greenfield, Tennessee
Zeta Tau Alpha



MINNIE LEE GILLESPIE Greenwood, Mississippi
Chi Omega



GRAHAM GORDON Louisville, Kentucky



LUCILLE HAMER Brownsville, Tennessee
Chi Omega



MAY MAURY HARDING Memphis
Chi Omega



MARGARET HARDWICK Covington, Tennessee
Zeta Tau Alpha



NENA HILL Memphis
Alpha Omicron Pi



JACK HILZHEIM Memphis
Kappa Sigma



WILMARY HITCH Drew, Mississippi
Chi Omega



WILLIAM T. HOPKINS Nashville, Tennessee
Alpha Tau Omega

JUNIORS

VERA INCE
Zeta Tau Alpha Helena, Arkansas

TED JOHNSON
Kappa Sigma Memphis

WILLIAM JONES
Sigma Alpha Epsilon Memphis

WILLIAM KENDALL Memphis

JANE KILVINGTON
Delta Delta Delta Memphis

WILLIAM LONG
Sigma Alpha Epsilon Memphis

ANNE LOVE
Delta Delta Delta Leland, Mississippi

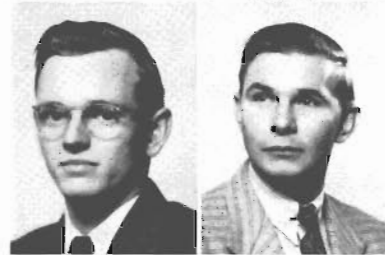
FRANK McKNIGHT
Kappa Sigma Cordova, Mississippi

ESTELLE McLEAN
Delta Delta Delta Milan, Tennessee

CLYDE McLEOD Fairhope, Alabama

FREEMAN MARR
Sigma Alpha Epsilon Memphis

LUCILE MAURY
Chi Omega Memphis



JUNIORS



ED MAXWELL
Kappa Alpha Pickens, Mississippi

ROBERT MILLER
Kappa Sigma Memphis



TOM MILLER
Sigma Nu Memphis

JAMES MOORHEAD
Kappa Alpha Little Rock, Arkansas



ESTELLE NEWSUM
Alpha Omicron Pi Memphis

MARY LOUISE NICHOLS
Kappa Delta Memphis



EUGENIA NOE
Memphis

JEANNE O'HEARNE
Delta Delta Delta Memphis



JANE OGDEN
Chi Omega Memphis

JOE ALICE PAGE
Alpha Omicron Pi Memphis



JANIE V. PAINE
Chi Omega Memphis

RICHARD PEARCY
Memphis

JUNIORS

VIRGINIA PEOPLES Dyersburg, Tennessee
Delta Delta Delta

THELMA RAGLAND Memphis
Delta Delta Delta

CAROLYN REYNOLDS Memphis
Kappa Delta

E. C. REYNOLDS Memphis

NANCY ROBINSON Memphis
Zeta Tau Alpha

BETTY SHEA Memphis
Alpha Omicron Pi

NORMA SHELTON Memphis
Delta Delta Delta

DICK SIMMONS Memphis
Sigma Alpha Epsilon

CHALMERS SOWELL Cornersville, Tennessee

RUTH STOKES Dermott, Arkansas
Zeta Tau Alpha

JEAN TAYLOR Jackson, Tennessee
Chi Omega

NIMROD THOMPSON Montgomery, Alabama
Sigma Alpha Epsilon



JUNIORS



BEVERLY TOWNSEND Jackson, Tennessee
Chi Omega

CHRISTINE TRAI COFF Marianna, Arkansas
Chi Omega



MAC TURNAGE Gulfport, Mississippi
Kappa Sigma

GLORIA VAUGHN Sheffield, Alabama
Chi Omega



MADOLON WALKER Memphis
Chi Omega

MARY VIRGINIA WALKER Horn Lake, Mississippi



ROBERT WHERRITT New Orleans, Louisiana
Alpha Tau Omega

MARY NELL WILKINSON Memphis
Kappa Delta



DOROTHY ANN WILSON Dyersburg, Tennessee
Zeta Tau Alpha

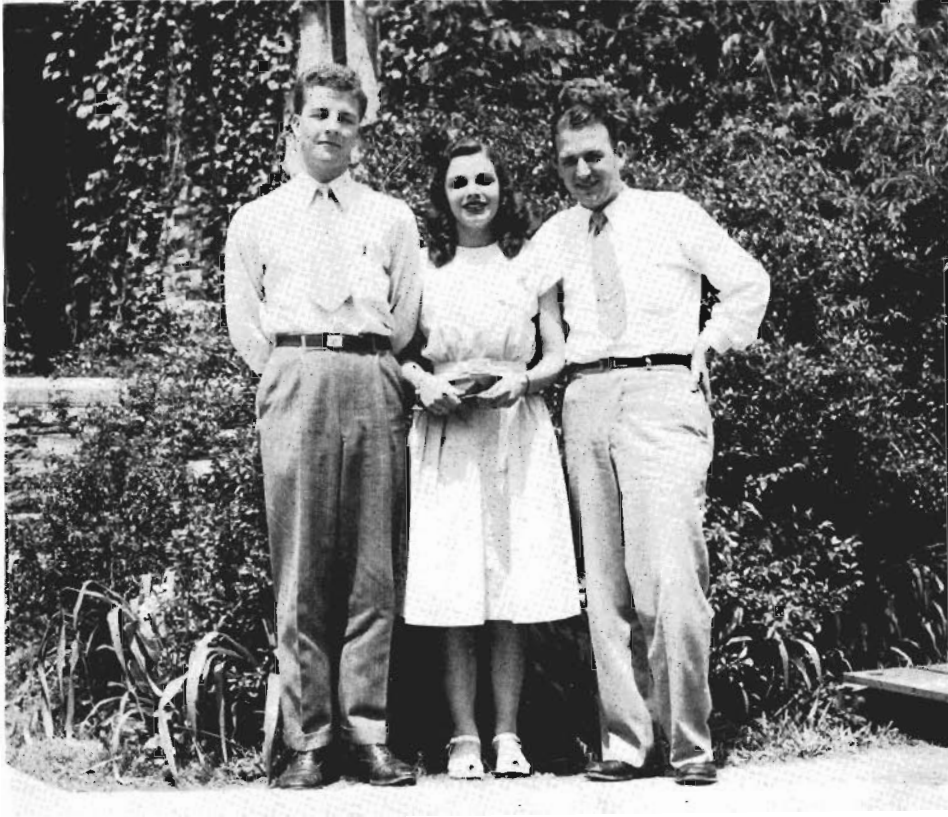
VIRGINIA ANNE WITHERS Memphis
Chi Omega



BLAIR WRIGHT Memphis
Sigma Alpha Epsilon

NANCY POPE WRIGHT Monticello, Arkansas
Zeta Tau Alpha

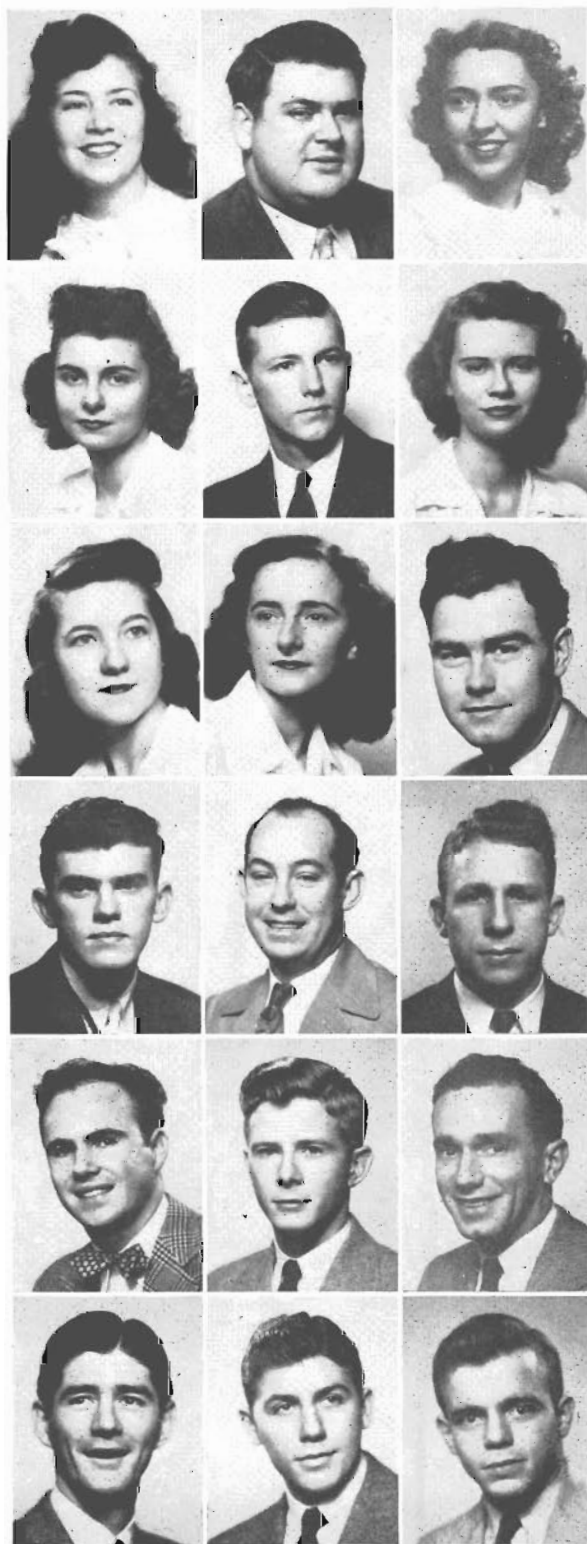
THE SOPHOMORE CLASS



CLASS OFFICERS

President	SAM FUDGE
Vice-President	BOB NORMAN
Secretary-Treasurer	ANN PATTERSON

SOPHOMORES



JEANNE ABBOTT	Delta Delta Delta	Memphis
LOUIS AGNEW	Sigma Nu	Memphis
MARILYN ALSTON	Alpha Omicron Pi	Memphis
JEANNE AMIS	Chi Omega	New Orleans, Louisiana
WILLARD ARMSTRONG	Kappa Alpha	Memphis
GLORIA ASH	Kappa Delta	Little Rock, Arkansas
MARY LEE ASHWORTH		Memphis
ANN AVERY	Alpha Omicron Pi	Memphis
TED BAUCUM	Pi Kappa Alpha	Memphis
WILLIAM R. BELL	Sigma Alpha Epsilon	Memphis
RALPH BENNETT	Sigma Nu	Memphis
FRANK BERFIELD	Sigma Nu	Memphis
FRED BLAKE	Sigma Nu	Memphis
DICK BOLLING	Kappa Sigma	Cleveland, Mississippi
FRANK BOSWELL	Sigma Alpha Epsilon	Memphis
JOHN BRAKEFIELD	Sigma Nu	Memphis
RUSSELL BRYANT	Kappa Alpha	Memphis
JAMES CALDWELL	Alpha Tau Omega	Shreveport, Louisiana

SOPHOMORES

PAT CALDWELL Louisville, Kentucky
 Delta Delta Delta

MARY NELL CAMPBELL Memphis
 Delta Delta Delta

WHEELER CARLETON Mobile, Alabama
 Alpha Tau Omega



JACK CARLISLE Memphis
 Pi Kappa Alpha

MARY ALMA CHURCH Memphis

MURIEL CLARY Paris, Tennessee
 Kappa Delta



JANE CLAY Memphis
 Chi Omega

ROBERT COBB Rome, Georgia
 Kappa Sigma

COZETTE COLE Memphis
 Gamma Delta



VINTON COLE Memphis
 Chi Omega

M. C. COMMANDER Memphis
 Sigma Nu

DAN COOPER Memphis



CARROLL COWAN Memphis
 Sigma Alpha Epsilon

MARGARET CROSSAN New Orleans, Louisiana
 Zeta Tau Alpha

CHARLES DAVIS Memphis



EUGENE DAWS Memphis
 Sigma Nu

THOMAS A. DODSON Memphis
 Kappa Alpha

ELIZABETH DUDNEY Kingsport, Tennessee
 Kappa Delta



SOPHOMORES



JEANNE EDENS Okolona, Mississippi
Delta Delta Delta

JEAN ELLINGSON New Orleans, Louisiana
Zeta Tau Alpha

ELIZABETH FAIRLEIGH Memphis
Gamma Delta



SAM FUDGE Memphis
Sigma Nu

ORA LEE GARRAWAY Memphis
Gamma Delta

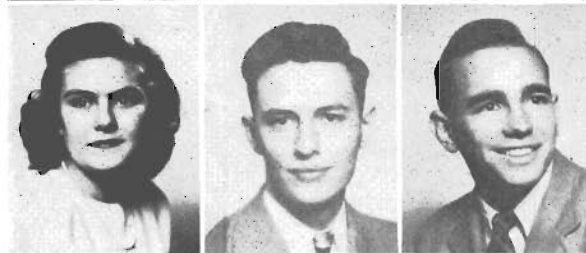
MERCER R. GEWIN DeKalb, Mississippi



HERBERT GLENN Memphis
Kappa Sigma

PEGGY HAILE Memphis
Alpha Omicron Pi

WILLIAM HALEY Memphis
Pi Kappa Alpha



JO ANN HANCOCK Memphis
Alpha Omicron Pi

FRENCH HARRIS Memphis
Pi Kappa Alpha

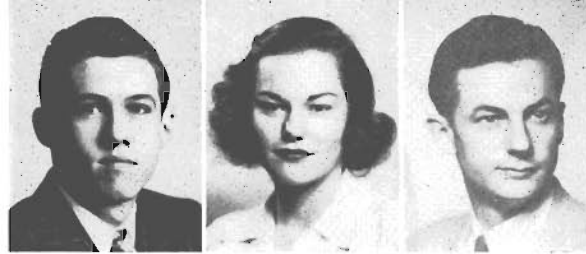
DAN HATHORN Memphis
Sigma Alpha Epsilon



WALTER HAUN Memphis
Kappa Sigma

SUE HENRY Tchula, Mississippi
Delta Delta Delta

BILLY MARKS HIGHTOWER Lewisburg, Tennessee
Sigma Nu



MARTIN HOLLINGER Memphis
Sigma Alpha Epsilon

SALLY HOWARD Mobile, Alabama
Chi Omega

JULIUS JOHNSON Memphis
Kappa Sigma

SOPHOMORES

SIDNEY KAHN Memphis

WILLIAM KERNODLE Wynne, Arkansas
Sigma Alpha Epsilon

JANE KING Memphis
Kappa Delta

JEAN KING Memphis
Kappa Delta

BETTY LANGHAM Montgomery, Alabama
Kappa Delta

NANCY LITTLE Memphis
Delta Delta Delta

MARGARET LOARING-CLARK Memphis
Chi Omega

SALLY LUNDY Belzoni, Mississippi
Delta Delta Delta

JOHN McKEE Memphis

JOHN McINTOSH Memphis
Kappa Sigma

PEGGY MARSHALL Memphis
Alpha Omicron Pi

CHARLES MARCRUM Memphis
Sigma Nu

SARA MAXWELL Memphis
Kappa Delta

ELOISE METZGER Memphis
Chi Omega

BEVERLY MORROW Memphis
Kappa Delta

JOHN MILLARD Memphis
Sigma Alpha Epsilon

ROBERT NORMAN Memphis
Sigma Nu

MARGARET NUNNERY Arcola, Mississippi
Zeta Tau Alpha



SOPHOMORES



GENE PAGE Kappa Alpha Memphis
 RHEW PAGE Sigma Alpha Epsilon Memphis
 TEMA PARKER Delta Delta Delta Memphis



ANN PATTERSON Chi Omega Benoit, Mississippi
 JANE PHELPS Kappa Delta Memphis
 FRANKLIN POE Kappa Alpha Memphis



JOHN POE Kappa Alpha Memphis
 CHARLES POOLE Kappa Alpha Memphis
 ONEIDA PRUETTE Kappa Delta Memphis



CHARLES RANEY Sigma Alpha Epsilon Malvern, Arkansas
 J. C. REID Sigma Nu Whitehaven, Tennessee
 EMILY RICE Kappa Delta Dallas, Texas



CAROLYN RIER Alpha Omicron Pi Memphis
 CARMEN ROPER Zeta Tau Alpha Memphis
 JOE ROULHAC Sigma Alpha Epsilon Memphis



STEPHEN SCHILLIG Sigma Alpha Epsilon Leland, Mississippi
 J. C. SCIANNI Kappa Sigma Memphis
 BETTY SCHNEIDER Alpha Omicron Pi Memphis

SOPHOMORES

FLETCHER SCOTT Memphis
 Sigma Alpha Epsilon

MARILENE SCRUGGS Memphis
 Kappa Delta

BARRON SEIFERD Memphis
 Sigma Alpha Epsilon



LENORA SPELLINGS Bells, Tennessee
 Kappa Delta

JANE STEWART Memphis
 Alpha Omicron Pi

GERALD SWEATT Memphis
 Pi Kappa Alpha



JOHN G. THOMAS New Orleans, Louisiana

SALLY THOMSON Homer, Louisiana
 Gamma Delta

LESLIE TUCKER Canton, Mississippi
 Sigma Alpha Epsilon



JAMES TURNER Jonestown, Mississippi
 Kappa Sigma

JOY UPSHAW Memphis
 Alpha Omicron Pi

ROBERT UTTER Memphis
 Pi Kappa Alpha



WILLIAM WADE Memphis

BEDFORD WATKINS Memphis
 Sigma Nu

SAM WATSON Marks, Mississippi
 Kappa Sigma



STANLEY WILLIAMSON Tutwiler, Mississippi
 Delta Delta Delta

KARL WOOD Memphis
 Pi Kappa Alpha

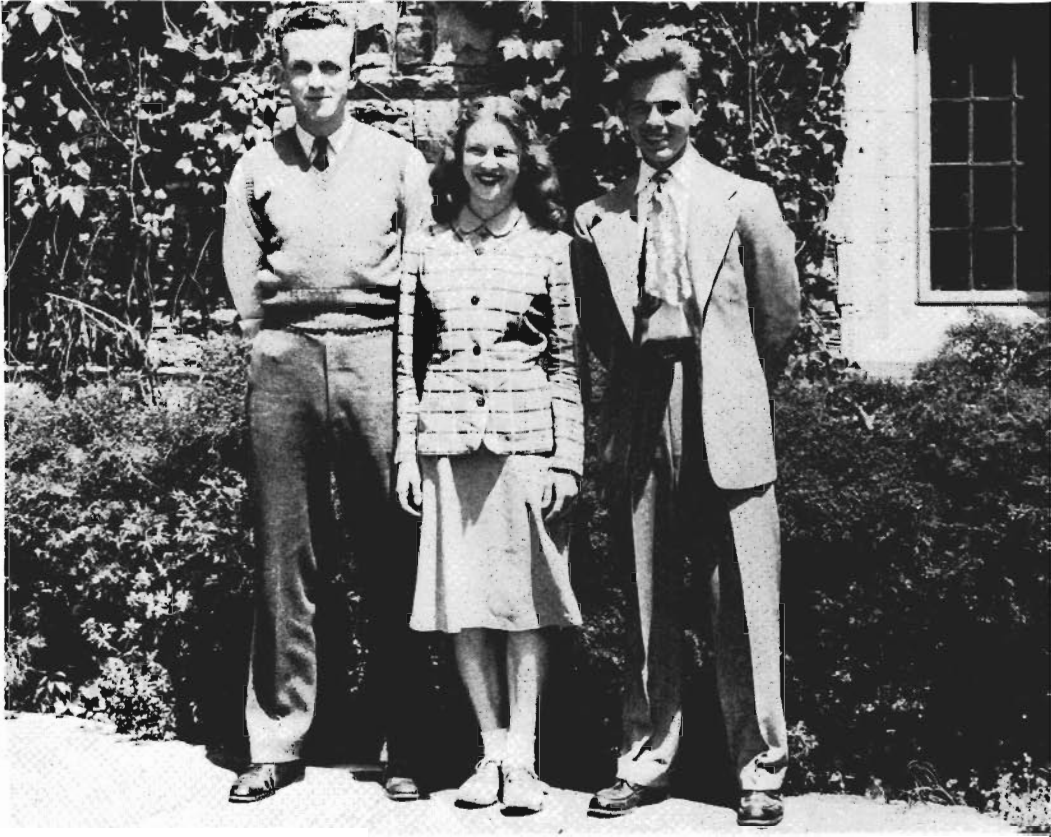
RICHARD WOOD Memphis
 Sigma Nu

TRENT WOOD Memphis
 Sigma Alpha Epsilon





THE FRESHMAN CLASS



CLASS OFFICERS

President	IRVINE ANDERSON
Vice-President	TOMMY TAYLOR
Secretary-Treasurer	ANN BROWN

FRESHMEN



JACK ACROYD
Sigma Alpha Epsilon Memphis

HARRISON ADAMS
Sigma Nu Memphis

MARJORIE ALLEN
Zeta Tau Alpha Memphis

IRVINE ANDERSON Natchez, Mississippi
Alpha Tau Omega

J. G. ARTHUR Memphis
Kappa Alpha

ANNE BAGGETT Memphis
Chi Omega

CHARLES BARNETT Memphis
Pi Kappa Alpha

ANN BARRIER Yazoo City, Mississippi
Chi Omega

MARY ELLA BATTLE Uniontown, Alabama
Gamma Delta

JOHN R. BELL Memphis
Sigma Nu

ERNEST BERNHOFT Memphis
Sigma Nu

CAROL BITNER New Orleans, Louisiana
Delta Delta Delta

SAM BLAIR Memphis
Sigma Alpha Epsilon

BETTY BOISBLANC Memphis
Alpha Omicron Pi

MARGARET BOISEN Memphis
Zeta Tau Alpha

DOROTHEA BOND Memphis

WILLIAM BRAZELTON Memphis
Sigma Alpha Epsilon

ANN BROWN Memphis
Kappa Delta

FRESHMEN

WILLIAM BROWN Vicksburg, Mississippi
Kappa Alpha

JOHN BRYANT East Point, Georgia
Kappa Sigma

HUGH BUCKINGHAM Memphis
Sigma Alpha Epsilon



CLARK BULWINKLE Mobile, Alabama
Kappa Alpha

MARY VIRGINIA BURCHETT Memphis
Delta Delta Delta

GENE CANESTRARI Memphis



HAMIL CAREY Memphis
Sigma Alpha Epsilon

VIRGINIA CATCHING Hazelhurst, Mississippi
Kappa Delta

JAMES COBB Philadelphia, Mississippi
Alpha Tau Omega



STEVE CONDER Memphis
Alpha Tau Omega

ROBERT COOPER Memphis
Sigma Alpha Epsilon

PATRICK CORRIGAN Memphis



THOMAS CULBERSON Portsmouth, New Hampshire
Alpha Tau Omega

BARBARA CULLINS Memphis
Alpha Omicron Pi

PAUL CURRIE Jackson, Tennessee
Kappa Sigma



KATHRYN DAUNHAUER Memphis
Zeta Tau Alpha

HELEN DeBERRY Laurel, Mississippi
Zeta Tau Alpha

ANN DeWAR Memphis
Alpha Omicron Pi



FRESHMEN



JANE DEWBRE Kappa Delta Memphis
 PAUL DILLMAN Sigma Nu Memphis
 GAYDEN DREW Kappa Alpha Memphis



WILLIAM DOUGLAS Arlington, Tennessee
 Sigma Alpha Epsilon
 ROBERT EDINGTON Mobile, Alabama
 Alpha Tau Omega
 JULIAN ELLIOTT Talladega, Alabama
 Sigma Alpha Epsilon



LLOYD D. ELLIS Blue Ridge, Georgia
 Sigma Nu
 CECIL EVANS DeFunaik Springs, Florida
 Sigma Nu
 JOHN EVANS Memphis
 Sigma Nu



RAYMOND FARRIS Jacksonville, Florida
 Sigma Nu
 FORREST FLANIKEN Memphis
 Sigma Nu
 JEANNE GILLESPIE Prattville, Alabama
 Kappa Delta



JOHN GORMAN Memphis
 Sigma Alpha Epsilon
 ALEENE GRAEBER Marks, Mississippi
 Alpha Omicron Pi
 HENRY GRAEBER Marks, Mississippi
 Sigma Alpha Epsilon



CARL GRAVES Memphis
 Sigma Alpha Epsilon
 RUTH EDNA GRIFFIS Memphis
 Kappa Delta
 WALKER GWINN Memphis
 Sigma Nu

FRESHMEN

JOANNE GWYN Memphis
 Alpha Omicron Pi
 PEGGY HAIRE Clarksdale, Mississippi
 Alpha Omicron Pi
 JOANNE HALL Memphis
 Alpha Omicron Pi



BOB HAMILTON Memphis
 MARK HARRIS Memphis
 Sigma Alpha Epsilon
 FRANK HEMMEN Memphis
 Sigma Nu



ELIZABETH HERRING Dundee, Mississippi
 WILLIAM E. HITT Memphis
 Alpha Tau Omega
 EULA HOLMES Whitehaven, Tennessee
 Chi Omega



MARY HOWARD Mobile, Alabama
 Chi Omega
 VIRGINIA JONES Memphis
 Zeta Tau Alpha
 GERE KING Memphis
 Chi Omega



ELIZABETH LEATHERWOOD Mobile, Alabama
 Kappa Delta
 WILLIAM E. LELAND Memphis
 Sigma Alpha Epsilon
 HERBERT LINVILLE Paris, Kentucky



DOROTHY LOVE Leland, Mississippi
 Delta Delta Delta
 JANE McATEE Brookhaven, Mississippi
 Delta Delta Delta
 FRANCES LEE McGEE Tchula, Mississippi
 Chi Omega



FRESHMEN



GALE MARTIN Memphis
 JOY MASINO Kappa Delta Memphis
 BETSY MASON Mobile, Alabama
 Zeta Tau Alpha



VIRGINIA MEAD Kappa Delta Memphis
 KENNETH MILLS Memphis
 MARY ANN MINDERMAN Zeta Tau Alpha Memphis



BEN MITCHELL Sigma Nu Memphis
 WILLIAM MITCHELL Sigma Nu Memphis
 ROBERT MONTGOMERY Birmingham, Alabama
 Alpha Tau Omega



VIRGINIA MULDER Zeta Tau Alpha Memphis
 JERE NASH Greenville, Mississippi
 Alpha Tau Omega
 WILLIAM NEMITZ Cordova, Tennessee
 Alpha Tau Omega



RAYMOND NORTON Sigma Alpha Epsilon Memphis
 MYRLE OLIVER Kappa Delta Paris, Tennessee
 EDWARD LEE PATTEE Little Rock, Arkansas
 Alpha Tau Omega



JEANNE PATTERSON Kappa Delta Memphis
 ELIZABETH ANN PEETS Gamma Delta Lorain, Ohio
 JOSIE PHILLIPS Memphis

FRESHMEN

WENDELL PHILLIPS Memphis
 Zeta Tau Alpha

CYRIL PIPKIN Memphis

CLIFTON PITMAN Memphis
 Sigma Alpha Epsilon



DONALD PITTMAN New Orleans, Louisiana
 Alpha Tau Omega

ERNEST M. POTTER Paris, Tennessee
 Sigma Alpha Epsilon

MYRTLE POWELL Memphis
 Alpha Omicron Pi



EARL QUINLEY Memphis
 Kappa Sigma

JOHN QUINLEY Memphis
 Kappa Sigma

BERTA RADFORD Memphis
 Chi Omega



MARY ANN RAMSEY Greenwood, Mississippi
 Kappa Delta

ANN ROSS REEVES Greenwood, Mississippi
 Kappa Delta

HARRIET REID Memphis
 Chi Omega



WILLIAM F. RILEY Memphis
 Pi Kappa Alpha

BETTY ROBINSON Memphis
 Zeta Tau Alpha

EUGENE SCHAEFFER Memphis
 Sigma Nu



MARSHALL SCOTT Memphis
 Sigma Nu

PATTY SUE SHAPPLEY Memphis
 Alpha Omicron Pi

MARVIN SHINBAUM Memphis



FRESHMEN



SHIRLEY SIBLEY Delta Delta Delta Memphis

BURTON SINCLAIR Sigma Nu Laurel, Mississippi

MARY ALICE SINCLAIR Memphis

GEORGIA SKOUTERIS Zeta Tau Alpha Memphis

LLOYD SMITH Alpha Tau Omega Baton Rouge, Louisiana

DAVID STATLER Kappa Sigma Memphis

DOROTHY STEINDORFF Kappa Delta Jackson, Tennessee

CARLIN STUART Pi Kappa Alpha Memphis

THOMAS TAYLOR Pi Kappa Alpha Memphis

REBECCA TRUAX Gamma Delta Memphis

DICK TUMILTY Kappa Alpha Oklahoma City, Oklahoma

ROWELL WALLER Pi Kappa Alpha Memphis

EDWIN C. WARD Sigma Alpha Epsilon Shelby, Mississippi

PAUL WARE Sigma Nu Memphis

PATTY WEAVER Chi Omega Jackson, Tennessee

MILDRED WILKERSON Chi Omega Memphis

JOAN WILLIAMS Chi Omega Memphis

GEORGE WILLIAMSON Alpha Tau Omega Mason, Tennessee

FRESHMEN

PAUL WILSON Collierville, Tennessee

BETTY MAE WITHERS Memphis
Delta Delta Delta

DONALD WOOD Mobile, Alabama
Alpha Tau Omega



JANE WOODSON Yazoo City, Mississippi
Delta Delta Delta

GORDON YOUNG Arlington, Tennessee
Sigma Nu

GERALDINE ZEPATOS Memphis
Zeta Tau Alpha



STUDENTS NOT PICTURED

SENIORS

William H. Bryce
Winston Cheairs
F. E. Crowson
John C. Darby
E. R. Dewey
Ralph Dubrovner
James Dwyer
Frank P. Elby
Charles Karl Frank
Clifford Green
Sam Greenberger
Noble Hicks
John G. Hughes
Rufus Irby
Frank Kennedy
Sara Grey McCallum
John McKinsey
Leila May Murray
Ruby Orgain
Joseph Pearlman
Martha Pittman
Suzanne Ransom
Adelaide Rattan
Barbara Thompson

JUNIORS

Sonya Alperin
William C. Andrews
Margaret Austin
Regine Bacot
Barbara Bowden
Robert Brabant
Harrison Cannold
John Connors
Craft Dewey
Dorothy Dyess
William Egbert
Winston Flake
Clyde Flanigan
Berson Frye
Elizabeth Fulkerth
Mahlon Harlan
Harris Hawken
William Haynes
Kay Hoag
Geraldine House
Marilu Howton
Alfred L. V. Ingram
David L. Jolly
Joseph R. Lee
Joanna McClellan
Lory E. Maxwell
Paul Moorhead
Glenn Morris
Patricia Park
Claude Pilkington
Mary Bell Pritchard
Mary Ann Robertson
Sidney Robinson
James E. Roper
Anna Louise Rother
Rosalie Rudner
David St. Martin
Herzl Shankman
Jack Simonton
Dorette Storn

Beverly Townsend
Mary Ellen Vaccaro
John P. Vance
Alma Van Hook
Franklin White
Jimmy White
Helen Wong
Katie Wong

SOPHOMORES

Alice Allein
Ben Arnold
Ella Bailey
Robert Baldwin
David Barber
James R. Barnes
Charles Blaine
David Boesvert
Stephen C. Bolling
Ralph Borum
Al Stanley Braver
Virginia Briggs
Virgil Bryant
Thomas Buford
Clarence Camferdam
Marjorie Carney
Ira Carter
Bettie Connally
Shirley Conroy
Howard Wm. Cox
Mabel Cranford
Betty Jean Cullings
Mildred Claire Curtis
Latham Daniel
Nancy Davis
Frances Dixon
Thomas Durham
Joseph Eckstine
William F. Elbrecht
John Ethridge
Charles Fleet
Orion F. Frye
Ben Gilliland
Tom Glenn
Emmett Hall
Nancy Hames
Marvin H. Hawks
Ted B. Hay, Jr.
Ross B. Humphreys
William B. Ingram, Jr.
James Jeffrey
James Johnson
William Johnson
Paul Kates
H. W. Keisker, Jr.
Ira M. Kelley
J. W. Kirkpatrick
John W. Knight
Kenneth Kressenberg
Billy Rex Leach
Marjorie Leak
Neil Leonard
Frances Lesser
Harry B. Lollar, Jr.
Peggy McAlexander
Edward McDonald
Lois McGregor

Charles Marcrum
John Murdock
Richard Mussett
Wade Newhouse
Lola Lee Owens
Raymond Parham
Jack Parry
Wayne Pate
Harlan Patton
Evin Perdue
Horace Pierotti
James Powers
Ira Pyron
Edward Reynolds
John Richards
Carl Smith
Richard Smith
William C. Snipes
Paul Snodgrass
Henry Spurrier
Alexis Stathis
Damon Sutton
Ralph Teed
John Travis
Richard Travis
Buford Utley
David Vaught
Betty Alice Villyard
Betty Walker
C. A. Walters, Jr.
Don Walton
Phyllis Webber
Ernestine Whitaker
Julius Whittington
Auvergne Williams
Leonard Wilson
James Wiygul

FRESHMEN

Arthur Akridge
Jane Aucott
Alan Babin
Henry Beaty
Charles Berry
Ned O. Berry
Charles Blackburn
Dan Boone
William Bowen
Charles Bradley
Albert Buford
Lloyd Burkett
Carol Cable
Wilber Callihan
James Carey
Barton Christopher
Maurice L. Connell
Sara Cooper
Helen Ruth Coplen
Leland Corneille
J. W. Craig
Millen Darnell
Mrs. Mary Roberts Davis
Robert deGraffenreid
Richard Dickerson
Herbert Dodson
Bedford Dunavant
Donald Edwards

Clarence Elam
Ann Faquin
Bernard Finklestein
William Fitzpatrick
Louise Fitzhugh
Milligan Fossett
Frank Gattuso
William Gibson
Lloyd Graves
Hall H. Halford, Jr.
Earl Hays
Robert Hedden
William Hedden
Eugene Heffernan, Jr.
Joe Hester
Walter Hooker
William Howard
George Huntworth
Ann Hutchinson
Billy Ingram
Julian Jones
Herman Kaplan
Narene Kee
Beverly Kissling
Jack Knox
Peggy Land
William Lawhorn
Betty Lee
James C. Lewis
Margaret McGown
William Marsh
Okie Martin
Francis Milazzo
William Mitchum
Flora Moncrief
James Morrison
Paul Mostert
James Mülroy
George Münger
Charles Nickas
Sara Ann Novarese
Louise Osborn
Louis Ost
William Paden
Ruth Patrick
Joseph Payne
John W. Pennington
Robert Pitts
James Price
Robert Reed
Raymond Roush
James K. Schmidt
Moris Shore
Effie Stebelton
Ed Strain
James D. Stubbs
Lemuel Hall Tate
Jasper Templeton
John A. Thomas, Jr.
W. D. Thurmond
Richard Tilson
Speros Vryonis
William Walton
Robert White
Fred White
John H. Williford, Jr.
Judson Williford

Marching Along Together

The image features a musical score for the song "Marching Along Together" by Mickey Dougherty. The score is written on five staves, each with a treble clef and a key signature of one sharp (F#). The lyrics are: "Marching Along Together Sharing every-thing". A central seal is superimposed on the music. The seal is circular with a scalloped edge and contains the following text: "THE SEAL OF SOUTHWESTERN AT MEMPHIS" around the top, "LOYALTY" at the top center, "TRUTH" on the left, "SERVICE" on the right, and "1875" at the bottom. The central emblem of the seal depicts a shield divided into four quadrants by a cross. The top-left quadrant shows a hand holding a quill pen, the top-right shows a globe, the bottom-left shows a book, and the bottom-right shows a torch. The shield is flanked by two olive branches.

Mickey Dougherty

ORGANIZATIONS

STUDENT COUNCIL



Front row: Julia Wellford, Evin Perdue, Ernest Flaniken, Bob Stobaugh, Mary Langmead. Second row: Betty Bouton, Irma Waddell, Dot Hogan, Lily Anne Beggs, Carolyn Cuninghame, Kathryn Lynch. Third row: Billy Hightower, May Wallace, Jane Kilvington, Jimmy Moorhead. Back row: Tom Miller, Blair Wright, Irvine Anderson.

OFFICERS

President	ERNEST FLANIKEN
Vice-President	EVIN PERDUE
Secretary-Treasurer	JULIA WELLFORD
President of Senior Class	MARY LANGMEAD
President of Junior Class	BLAIR WRIGHT
President of Sophomore Class	SAM FUDGE
President of Freshman Class	IRVINE ANDERSON
President of Men's Pan-Hellenic Council	BILLY HIGHTOWER
President of Women's Pan-Hellenic Council	DOT HOGAN
President of Omicron Delta Kappa	BOB STOBAUGH
President of Torch	MAY WALLACE
President of Alpha Theta Phi	IRMA WADDELL
President of Honor Council	BILL INGRAM
President of Christian Union Cabinet	CAROLYN CUNINGHAM
President of Alpha Psi Omega	JANE KILVINGTON
President of Women's Undergraduate Board	KATHRYN LYNCH
President of Y.W.C.A.	BETTY BOUTON
Editor of Lynx	LILY ANNE BEGGS
Editor of Sou'wester	TOM MILLER
President of Elections Commission	JIMMY MOORHEAD
President of Publications Board	IRMA WADDELL

The Student Council is the official and representative organization of the Student Body. It discusses relations between student organizations and presents matters for the consideration of the student body. It helps to shape student opinion and serves as a medium between the students and the faculty.

HONOR COUNCIL



Left to Right: William Jones, Peggy Baker, Julia Wellford, Mac Turnage, Bill Ingram, Katherine Lynch, Sam Fudge, Mary Langmead, Cliff Pitman, Bob Norman. Not Pictured: Beverly Beane, Mary Howard.

OFFICERS

President	BILL INGRAM
Vice President	MAC TURNAGE
Secretary	KATHERINE LYNCH

The Honor Council supervises the working of the Honor System. Composed of representatives elected by each of the classes, this body instructs freshmen and other new students in the principles and nature of the Honor System. In any case of academic dishonesty it acts as a court and disciplines students found guilty of violation of the code.

TORCH



Left to right: Julia Wellford, Katherine Lynch, Mary Langmead, May Wallace, Irma Waddell. Not pictured: Mary Gideon.

OFFICERS

President	MAY WALLACE
Vice-President	KATHERINE LYNCH
Secretary-Treasurer	IRMA WADDELL

Torch, honorary society for senior women, strives to recognize women who have attained high standards of leadership and scholarship throughout their college career. Members, tapped in the Spring of their junior year, are limited to ten per cent of the junior women.

OMICRON DELTA KAPPA



Left to right: John Wilson, Mac Turnage, Harland Smith, James McQuiston, Ernest Flaniken, Jim Moorhead. Not pictured: Bob Stobaugh, Hayes Owen, Bill Bryce, Maynard Fountain, William Jones. Faculty members (not pictured): Dr. L. G. Locke, Dr. J. L. A. Webb, Dr. Robert Hartley.

OFFICERS

President BOB STOBAUGH
Secretary DR. L. G. LOCKE

Omicron Delta Kappa is a national honorary fraternity organized for the purpose of giving recognition to the best all-round men of the Junior and Senior classes. Those men are selected for membership who are pre-eminent in leadership in student activities and in upholding the ideals of the college.

CHI BETA PHI



Front row: Professor J. L. A. Webb, Mary Gideon, Sara Grey McCallum, Carol Morris, Mary Louise Rhea, Professor P. N. Rhodes. Second row: Bob Stobaugh, Bill Bryce, Robert Jones, Billy Symes, Frank Elby.

OFFICERS

President	BOB STOBAUGH
Vice President	SARA GREY McCALLUM
Secretary-Treasurer	MARY LOUISE RHEA

Chi Beta Phi is an honorary scientific fraternity for students majoring in science. Essential requirements for membership are junior class standing and an exceptionally high average in scientific subjects.

ALPHA THETA PHI



Left to right: Ernest Flaniken, Betty Bynum Webb, Jeanne Degraffenreid, Laverne Lazarov, Bob Stobaugh, Irma Waddell, Carol Morris, Julia Wellford, May Wallace.

OFFICERS

President	IRMA WADDELL
Vice-President	ROBERT STOBAUGH
Secretary	LAVERNE LAZAROV

Alpha Theta Phi, an honorary scholastic fraternity, is composed of students who have completed at least two and one-half years of college work, maintaining an exceptionally high average. Its purpose is to recognize such students and to emphasize scholarship in the thoughts of other students.

Y. W. C. A. CABINET



Front row: Betty Bouton, Catherine Harrison, Betty Shea, Jane Kilvington. Second row: Nancy Robinson, Mary Lou Nichols, Virginia Anne Withers, Joan Cogswell.

OFFICERS

President	BETTY BOUTON
Vice-President	CATHERINE HARRISON
Secretary	BETTY SHEA
Treasurer	JANE KILVINGTON

CABINET

Social Activities	HAZEL BROWN
Membership	NANCY ROBINSON
Art	JOAN COGSWELL
Music	VIRGINIA ANNE WITHERS
Social Service	VINTON COLE
Devotional	MARY LOU NICHOLS

The Y.W.C.A. has a three-fold purpose: "to realize full and creative life through a growing knowledge of God, to have a part in making this life possible for all, and to promote friendship among the students and cooperation in campus activities." Monthly meetings are held in the sorority houses, at which time some outstanding speaker in the city gives the program.

WOMEN'S UNDERGRADUATE BOARD



Left to right: Kathryn Lynch, Dot Hogan, May Wallace, Mary Langmead, Betty Bouton, Peggy Hails, Julia Wellford, Vivian Quarles.

OFFICERS

President	MARY LANGMEAD
Vice-President	MAY WALLACE
Secretary-Treasurer	MARY GIDEON

The Women's Undergraduate Board is made up of the women officers of the four classes, the presidents of the women's organizations on the campus, and the officers, elected by the women students as a whole. It has as its aim the promotion of friendly relations among the women's organizations. It also assists with freshman orientation and directs freshman regulations.

THE NITIST CLUB



First row: Eloise Metzger, John Broderick, Dr. Felix Wasserman. Second row: Margaret Hardwick, Westy Tate, Georges Monhard, Kenneth Mills. Third row: David Ruffin, William Bowden, Ed Quinn. Not pictured: Walter Haun, Ira Carter.

OFFICERS

President JOHN BRODERICK

The Nitist Club meets monthly for a discussion of some topic of current interest, such as political questions, or international relations.

S. A. B. A.



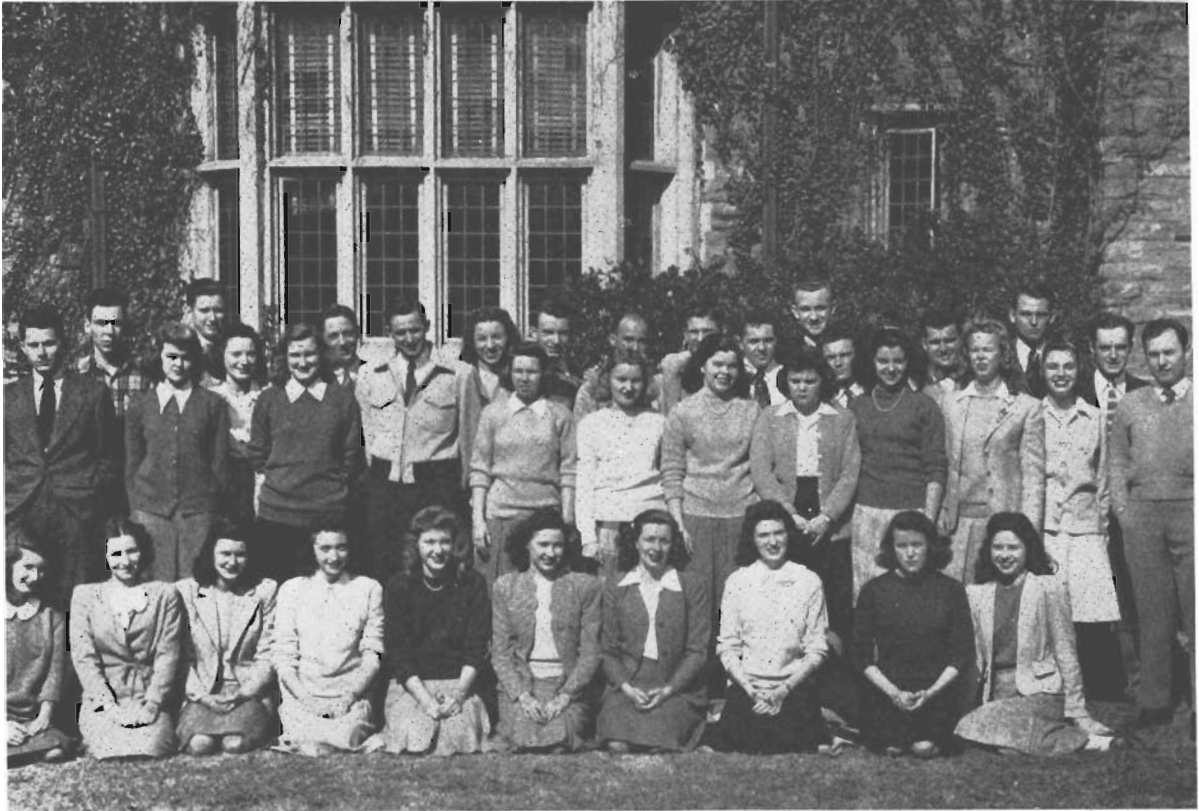
First row: Patty Weaver, Peggy Gallimore, Mary Belle Currier, Virginia Withers, Tommy Taylor, Jimmy Cobb, Nimrod Thompson. Second row: Peggy McAlexander, Jane King, Peggy Haile, Pat Caldwell, Tex Kressenberg, Claire James. Third row: Margie Vickers, Jean King, Ann Brown, Peggy Baker, Tema Parker, Ann Fairleigh, Betty Lee, Jane Ogden, Peggy Marshall, Ora Lee Garraway. Fourth row: Rachel Utley, Dot Hogan, Vera Ince, Robert Edington, Jere Nash, Tom Dodson, Bill Hopkins.

OFFICERS

President	PAT CALDWELL
Vice-President	CLAIRE JAMES
Secretary-Treasurer	PEGGY HAILE

The Southwestern Athletic Backing Association has for its purpose the promotion of school spirit and interest in college athletic functions. Its membership includes the cheerleaders and three representatives from each sorority and fraternity.

THE SOU'WESTER



Front row: Harriet Causey, Nancy Little, Wilmary Hitch, Janie V. Paine, Ann Pridgen, Jeanne O'Hearne, Peggy Marshall, Lucille Hamer, Mary Virginia Morris, Oneita Pruette. Second row: Bill Hatchett, Leona DeMere, Eloise Metzger, Martha Carroll, Tom Miller, Claire James, Carol Bitner, Lily Anne Beggs, Mary Ann Ramsey, Betty Huffman, Aleene Graeber, Ann Patterson, Bill Ingram. Back row: John Broderick, Bob Cooper, Jack Hiltzheim, Peggy Laughter, Jere Nash, Bill Marsh, Dick Wood, Walter Haun, Irvine Anderson, Bill Hopkins, Hugh Buckingham, Bob Amis, Barron Seiferd.

STAFF

Editor	TOM MILLER
Business Manager	BILL INGRAM
Sports Editor	BARRON SEIFERD
Society Editor	CLAIRE JAMES
Circulation Manager	ANN PRIDGEN

The Sou'wester is the weekly news publication of the student body.

THE LYNX



Left to right: Dick Bolling, Vinton Cole, Janie V. Paine, Ann Patterson, Mac Turnage, Leslie Tucker, John Millard, Lily Anne Beggs, Virginia Anne Withers, Joe Alice Page, Jere Nash. Not pictured: Betty Shea, Sally Howard, Peggy Baker, Jack Hilzheim, Elizabeth Dudney, Rhew Page.

STAFF

Editor	LILY ANNE BEGGS
Business Manager	VIRGINIA ANN WITHERS
Assistant Editor	MAC TURNAGE
Assistant Business Manager	PEGGY BAKER
Staff Photographer	BEN GILLILAND
Art Editor	MICKEY DOUGHERTY

The Lynx is the student annual publication.

STYLUS



Left to right: Milton Addington, May Wallace, Sara Grey McCallum, Jeanne deGraffenreid, Dick Wood, William Bowden, Dick Bolling, Irma Waddell, David Ruffin, John Broderick.

OFFICERS

President	DICK WOOD
Secretary-Treasurer	JEANNE deGRAFFENREID
Editor	MILTON ADDINGTON
Faculty Adviser	J. Q. WOLF

Stylus is an honorary society designed to recognize and stimulate literary activity on the campus. Members are selected on the merits of papers submitted in competition. The Stylus Journal is the annual publication of the club.

FRENCH CLUB



Front row: Bob Brabant, Margaret Hardwick, Joe Alice Page, Nena Hill, Peggy McGowan, Georges Monhard, Nancy Little, Mary Virginia Morris, Norma Shelton, Ann Brown. Secnd row: Vinton Cale, Bob Norman, Bob Cooper, Dorothy Wilson, Tom Dodson, Dan Hathorn, Beverly Beane.

OFFICERS

President	NENA HILL
Vice-President	JAMES ROPER
Secretary	BEVERLY BEANE
Treasurer	NORMA SHELTON

The French Club, "Sans Souci," was organized in the fall of 1946 to promote an interest in French literature, language, and customs. All advanced French students, French majors, and beginning students with an exceptionally high average are invited to attend the meetings, which are held bi-weekly.

CHRISTIAN UNION CABINET



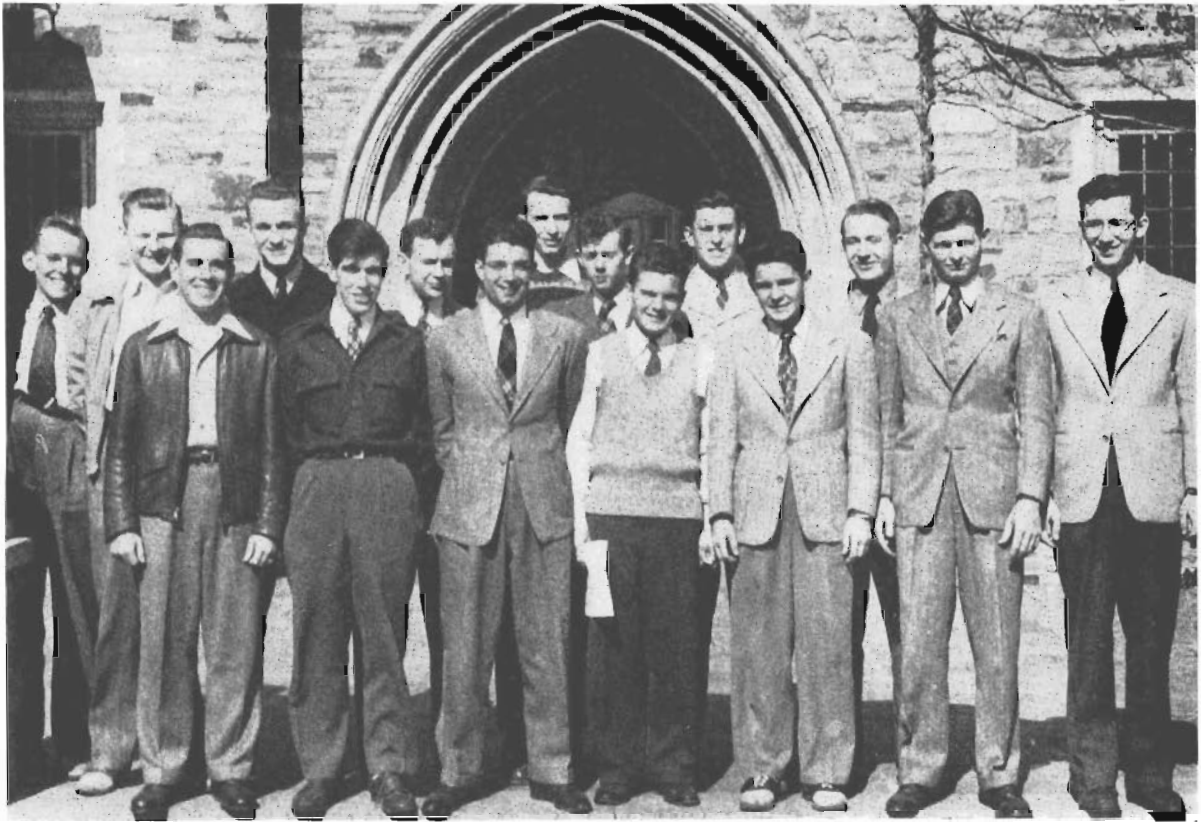
Front row: Julia Wellford, Mac Turnage, Carolyn Cuningham. Second row: Leslie Tucker, Betty Bouton, Lily Anne Beggs, Mary Gideon, Margie Vickers, Dick Bolling. Third row: Tommy Houser, Dusty Anderson, John Wilson. Not pictured: Jimmy Moorhead, Jane Kilvington, Catherine Harrison, Jane McAtee.

OFFICERS

President	CAROLYN CUNINGHAM
Vice-President	JULIA WELLFORD
Secretary-Treasurer	LESLIE TUCKER

The Christian Union Cabinet is composed of the Presidents and Vice Presidents of the distinctly religious campus organizations, the Ministerial Club, the Y.W.C.A., and the Canterbury Club; two representatives from each class; and the Cabinet officers, selected from the student body at large. The Cabinet sponsors and directs student religious activities and actively promotes good fellowship on the campus.

MINISTERIAL CLUB



Front row: Bill Brown, Graham Gordon, Ernest Flaniken, Bill Hopkins, Donald Pittman, John Wilson, Bob Montgomery. Second row: Mac Turnage, Leslie Tucker, Dusty Anderson, Raith Gewin, Jere Nasr, Wheeler Carleton, Lloyd Smith, Robert Edington. Not pictured: Clark Bulwinkle, Richard Barnes, Virgil Bryant, Jimmy Caldwell, Bobby Cobb, Jimmy Cobb, Robert Reed, William Jones, Tommy Taylor, Burton Sinclair, William Wade, Bob Wherritt, Dick Tumilty.

OFFICERS

President	JOHN WILSON
Vice-President	LESLIE TUCKER
Secretary-Treasurer	WHEELER CARLETON

The Ministerial Club is composed of those students who are studying for the ministry and others interested in religious activities both on and off campus. The club supports all campus religious functions and frequently holds devotional services at various institutions in the city. It sponsors weekly prayer meeting services in the men's dormitories.

THE PUBLICATIONS BOARD



Left to right: Willard Armstrong, Irma Waddell, Peggy Baker, Tommy Houser.

OFFICERS

President	IRMA WADDELL
Treasurer	C. L. SPRINGFIELD
Faculty Advisers	J. Q. WOLF, OLIVE WESTBROOKE

The Publications Board selects the editors of student publications, exercises supervision over their policies, and makes appropriations to them.

The board is composed of a president, elected by the student body, an elected member from each of the three upper classes, faculty advisers appointed by the President of the College, and a permanent treasurer, the Bursar of the College.

THE ELECTIONS COMMISSION



Front row: Carolyn Reynolds, Jim Moorhead, Dot Hogan, Harry Hawken, Claire James. Second row: John Wilson, Jeanne deGraffenreid, Betty Bouton, Ann Fairleigh, Ed Quinn. Third row: Tom Miller, Chalmers Sowell. Not pictured: Blair Wright, Irma Waddell.

OFFICERS

President	JAMES MOORHEAD
Vice-President	HARRY HAWKEN
Secretary-Treasurer	IRMA WADDELL

The Elections Commission is composed from one member from each sorority, fraternity, and independent group. Its purpose is to insure fair student elections by supervising conventions and balloting, and by penalizing individuals or organizations not adhering to the regulations determined by the Commission.

WOMEN'S DORMITORIES GOVERNING BOARD



Front row: Mary Langmead, Katherine Lynch, Catherine Harrison. Second row: Sue Henry, Lucile Hamer, Margaret Hardwick, Ann Patterson.

OFFICERS

President	KATHERINE LYNCH
Vice President	MARY LANGMEAD
Secretary	CATHERINE HARRISON

The Women's Dormitories Governing Board supervises the regulations of the women's dormitories and disciplines any fraction of these regulations.

CANTERBURY CLUB



Left to right: Norma Shelton, Teddy Ragland, Sara Maxwell, Carolyn Cuningham, Jane Kilvington, Nancy Robinson, Marjorie Allen.

OFFICERS

President	JANE KILVINGTON
Vice President	CAROLYN CUNINGHAM
Secretary	NANCY ROBINSON
Treasurer	JEANNE O'HEARNE
Program Chairman	MARGARET LOARING-CLARK

The primary purpose of the Canterbury Club is to bring together students, irrespective of religious affiliations, for the discussion of the student's religious problems. Corporate communion services are held monthly.

"S" CLUB



Front row: Dick Lee, John Broderick, Karland Smith, Freeman Marr, Evin Perdue, Frank Boswell, Bill Bell, Billy Speros, Forrest Flaniken, Arthur Ackridge, Carroll Cowan, Sam Blair, Mark Harris, Bill Bryce. Second row: Glenn Swingle, Walter Haun, Dick Smith, Tommy Houser, Clyde McLeod, Bill Coley, John Bryant, Dick Arnold, Fletcher Scott, Bedford Dunnivant, Dickie Dickerson, Billy Hightower.

OFFICERS

President	BILLY SPEROS
Vice-President	HAYS OWEN
Secretary-Treasurer	CLYDE McLEOD

The "S" Club is composed of all the men who have earned a letter in any one of the intercollegiate sports in which Southwestern takes part. These sports are football, basketball, track, tennis, and golf.

ALPHA PSI OMEGA



Left to right: Mac Turnage, Bob Utter, Betty Bynum Webb, Pat Caldwell, Peggy McAlexander, Jane Kilvington, Harriet Causey, Ernest Flaniken, Ted Johnson.

OFFICERS

President	JANE KILVINGTON
Vice-President	MAC TURNAGE
Secretary-Treasurer	ERNEST FLANIKEN

Alpha Psi Omega is a national honorary dramatic society; its membership is composed of students who have been outstanding either in acting or in some phase of play production. Those who are preparing for membership by gaining points are called Heelers.

THE ALABAMA CLUB



First row: Don Wood, Clark Bulwinkle, Tom Glenn, Robert Edington, Joe Eckstine, Wheeler Carleton. Second row: Robert Montgomery, Catherine Arnold, Betty Langham, Mary Howard, Sally Howard, Jeanne Gillespie, Dorothy Fuller, Mary Ella Balle, Clyde McLeod. Not pictured: Julian Elliott, Elizabeth Leatherwood, Betsy Mason, Gloria Vaughn.

OFFICERS

President	CLARK BULWINKLE
Vice-President	TOM GLENN
Secretary	JEANNE GILLESPIE
Treasurer	ROBERT EDINGTON

The Alabama Club was organized in 1946 in order that the students from this state may meet together for fellowship. The members are also interested in the promotion of friendly relations among the various campus organizations.

DELTA CLUB



First row: Peggy Baker, Dick Bolling, Harriet Causey. Second row: Stanley Williamson, Sally Lundy, Wimary Hitch, Ann Patterson, Dot Love, Hazel Brown, Sue Henry, Frances Lee McGee, Carol Cable. Third row: Cham Canon, Henry Graeber, Charlie Park, Steve Schillig.

OFFICERS

President	DICK BOLLING
Vice President	HARRIET CAUSEY
Secretary Treasurer	PEGGY BAKER

The Delta Club was organized this year for the purpose of bringing together for fellowship and recreation the students from this section of Mississippi. It also endeavors to promote friendly relations between the various groups on the campus.

PI



Back row: Jane Phelps, Dot Hogan, Westy Tate, Jeanne Gillespie, Peggy Marshall, Berta Radford. Left arm: Claire James, Jane Ogden, Mary Langmead. Right arm: Pat Caldwell, Julia Wellford, Betty Bouton. Not pictured: Carr: Bitner, Anna Louise Rother.



Jo Ann Hancock, May Day Pi

OFFICERS

High Pi	MARY LANGMEAD
Low Pi	BETTY BOUTON
Secretary Treasurer	JANE OGDEN

Pi intersorority, a national organization, seeks to promote friendly relations among the sororities on the campus and to recognize outstanding women students. Each Tuesday the members wear green and white with the traditional Pi arm-band.

S.T.A.B.



Left to right: Dorothy Dyess, Bettye Lee Hancock, Betty Schneider, Betty Jo Brantley, Lucille Hamer, Peggy Gallimore, Janie V. Paine, Ann Pridgen, Carolyn Reynolds, Jeanne Edens.



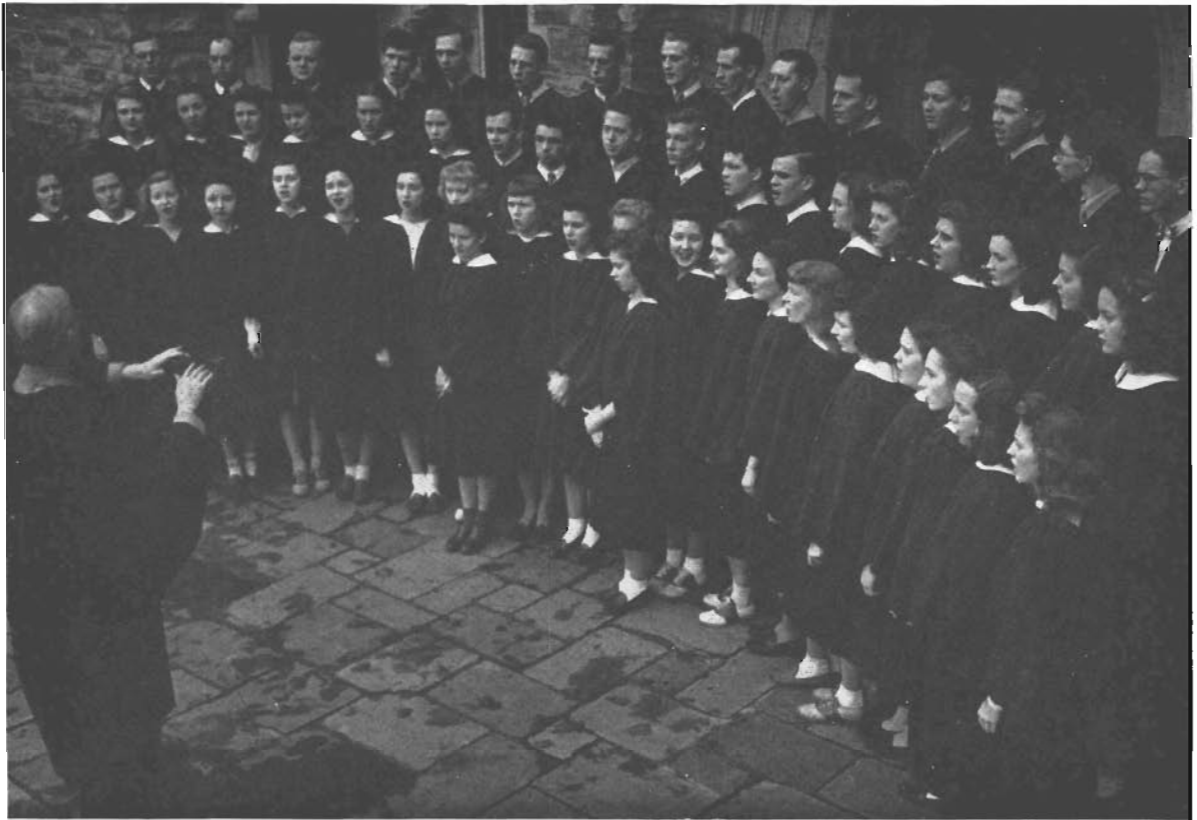
Ann Patterson, Founder's Day Member

OFFICERS

President BETTYE LEE HANCOCK
Vice President JANIE V. PAINE
Secretary Treasurer PEGGY GALLIMORE

S.T.A.B., a national intersorority, was organized for the purpose of fostering harmonious relations among the women's organizations on the campus. Each Friday the members wear white with the red badge of S.T.A.B. at the waist.

THE SOUTHWESTERN SINGERS



First Row: Muriel Clary, Jean Edens, Virginia Rose Meade. Second Row: Betty Lee, Jane Clay, Dorothy Steindorff, Carol Hesselbein, Stanley Williamson, Oneida Pruitt, Carolyn Cunningham, Beverly Townsend, Virginia Catching, Mary Nell Grainger, Mary Lee Ashworth, Margaret Loring-Clark, Elizabeth Peets, Ann Brown, Joy Upshaw, Dorothea Bond, Elizabeth Herring, Virginia Prettyman, Betty Bynum Webb. Third Row: Jane McAtee, Peggy Laughter, Betty Mae Withers, Anna Louise Rother, Martha Pittman, Mary Alma Church, Reith Gewin, Ernest Flannikin, Bill Mitchell, Jim Cobb, Bedford Watkins, George Williamson, Sally Thomson, Sarah Maxwell, Elizabeth Fulkerth, Mary Frances McDearman, Christine Traicoff, Catherine Arnold. Fourth Row: William Jones, Ralph Bennett, George Muns, Bob Hamilton, Gene Canestrari, Frank Berfield, Jim Carey, Virgil Bryant, James Byerly, Robert Reed, Bob Amis, David Jolly, Paul Dillman, Tom Glenn, Clifford Tucker.

PROFESSOR BURNET TUTHILL, Director

The Southwestern Singers is the primary musical organization on the campus. It performs at vesper services, and appears at various schools and churches in the vicinity. A Spring Concert Tour is presented at various Tri-State towns each year.

BAND

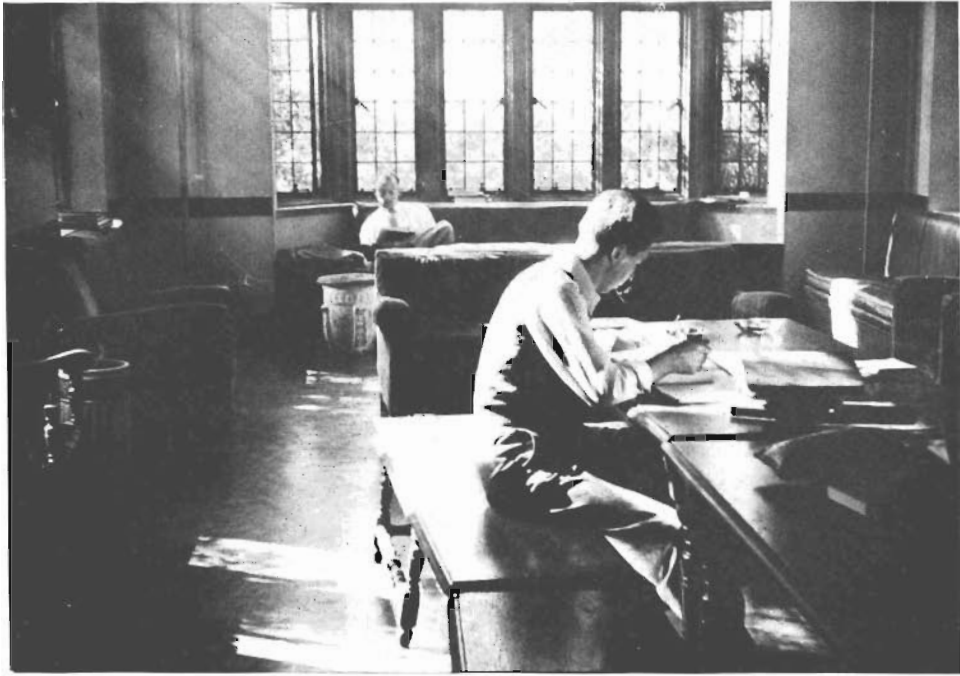


Officers, left to right: Lee Corneille, Librarian; Julius Johnson, Secretary; Nancy Pope Wright, Vice President; Jim Carey, President.

MEMBERS

LAWRENCE BECK
HAM CAREY
JIM CAREY
NICK CAUSEY
LEE CORNEILLE
DON ELLIS
JULIUS JOHNSON
JACK KNOX
NEIL LEONARD
BILL NEMITZ
CARMEN ROPER
JOHN VANCE

GEORGE WILLIAMSON
NANCY POPE WRIGHT
BILLY LONG
JANE AUCOTT
JIMMY PRICE
DON EDWARDS
RUSS HEINZE
BURTON SINCLAIR
STANLEY WILLIAMSON
LIB DUDNEY
MARILU HOWTON
MARJORIE MALIN



Stand up & Cheer

Stand up and Cheer

Stand up and Cheer for old

South-west-ern

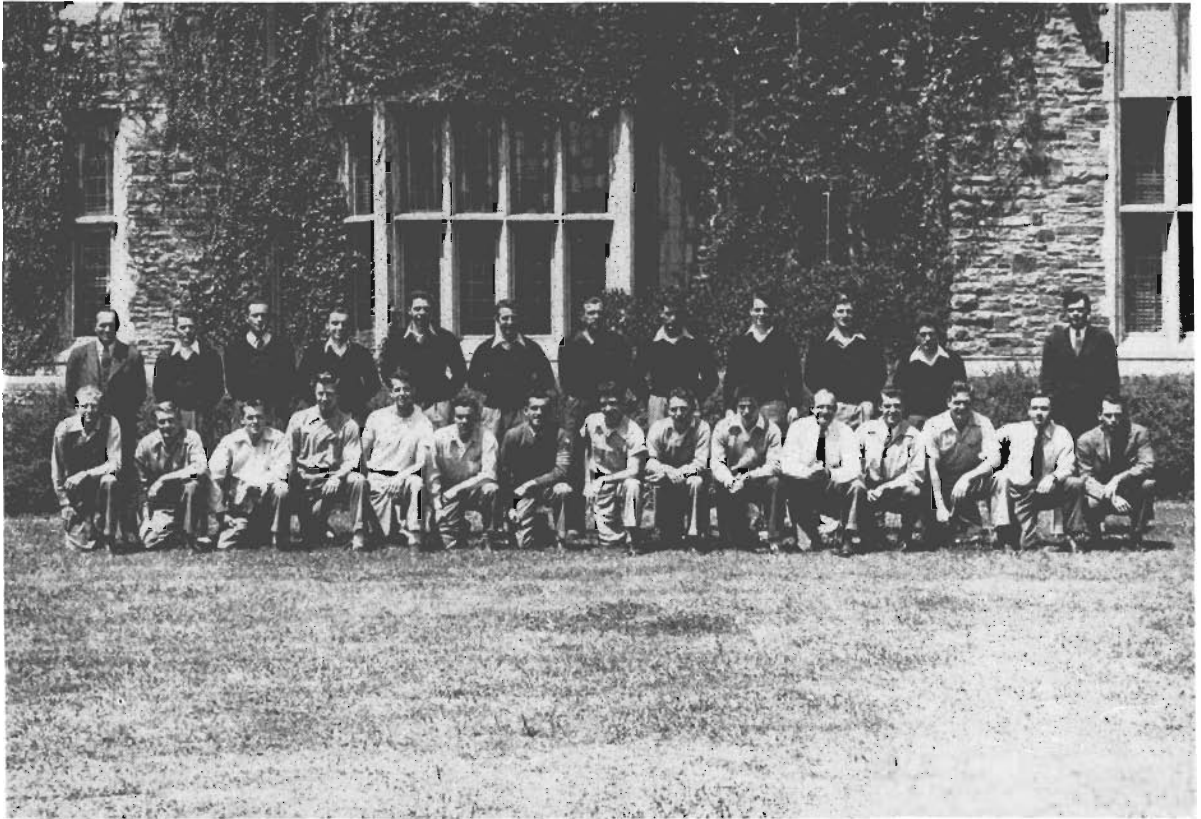
We

The central illustration within the oval shows a tennis racket, a golf club, a tennis ball, a tennis shoe, and a tennis ball.

ATHLETICS

Mickey Dougherty '47

FOOTBALL



THE TEAM

Front row: John Ethridge, Ernest Bernhoft, Dick Smith, Dick Arnold, Harland Smith, Sam Greenberger, Billy Speros, Forrest Flaniken, Arthur Akridge, J. C. Scianni, Craft Dewey, Tommy Houser, Dan Boone, Ed Dewey, Bob Amis. Second row: Coach Al Clemens, Walter Haun, Frank Boswell, Carroll Cowan, Bedford Dunavant, John Bryant, Dick Simmons, Lloyd Graves, Sam Blair, Dickie Dickerson, Ted Hay, Coach Taylor Revely.

Millsaps 33	Southwestern 0
Bethel 6	Southwestern 0
Cumberland 7	Southwestern 15

BASKETBALL

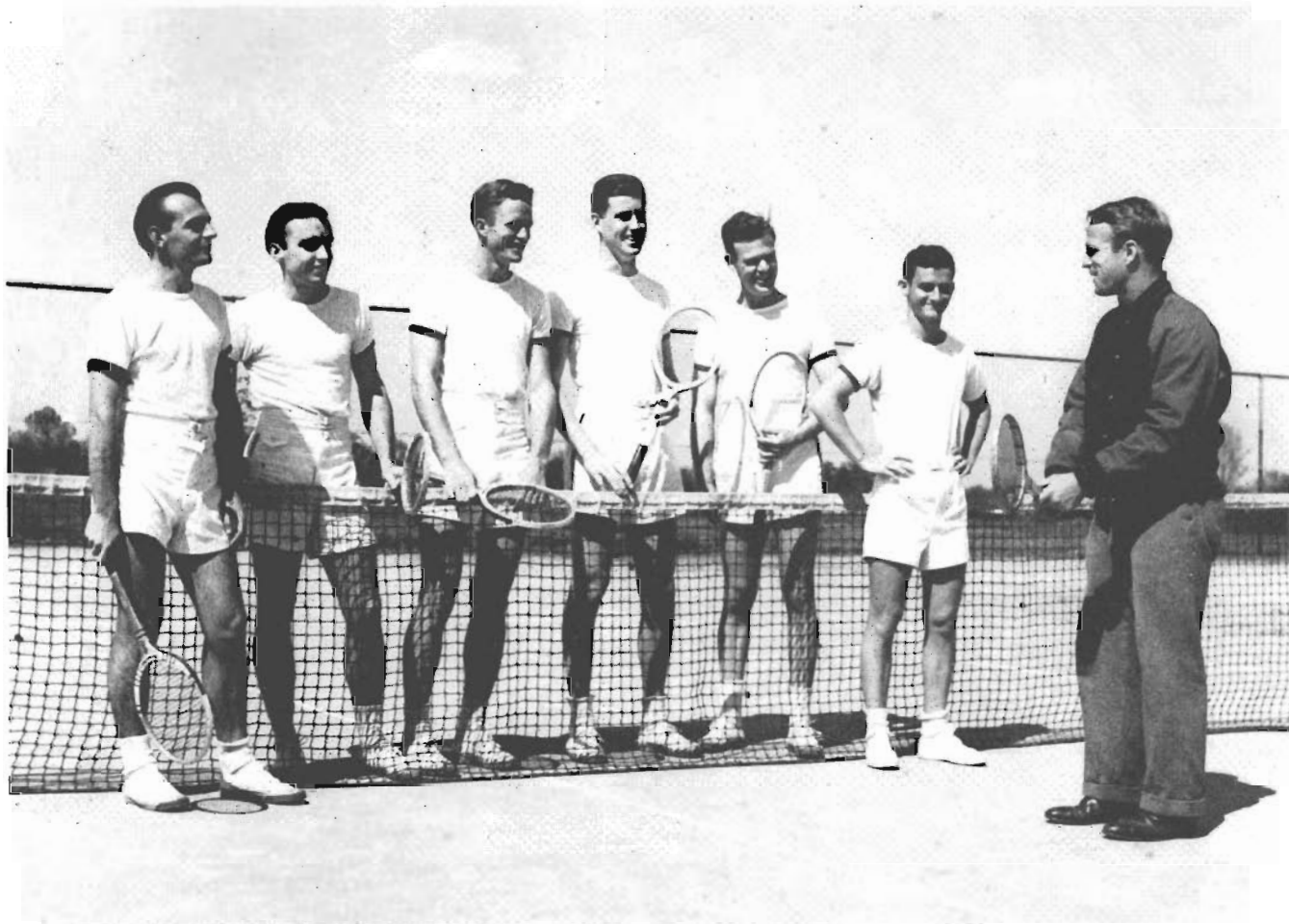


THE TEAM

Left to right: Manager Ralph Teed, Trainer Walter Haun, Jasper Templeton, Bill Bell, Bedford Dunavant, Harland Smith, John Broderick, William Haynes, John Williford, Dean Bailey, Bill Coley, Clyde McLeod, Dickie Dickerson, Coach Lloyd Stokstad.

Lambuth 31	Southwestern 37
Ole Miss 74	Southwestern 34
Arkansas State 81	Southwestern 41
Ole Miss 53	Southwestern 22
Lambuth 42	Southwestern 41
Memphis State 49	Southwestern 46
Birmingham Southern 46	Southwestern 39
Sewanee 50	Southwestern 47
Chattanooga 56	Southwestern 41
Vanderbilt 64	Southwestern 39
Mississippi College 57	Southwestern 39
Arkansas 52	Southwestern 45
Birmingham Southern 42	Southwestern 36
Millsaps 61	Southwestern 50
Memphis State 46	Southwestern 27
Chattanooga 42	Southwestern 43
Sewanee 32	Southwestern 34

TENNIS



THE TEAM

GEORGES MONHARD

CLYDE McLEOD

CAROL COWAN

BUCKY HEFFERNAN

JOHN WILLIFORD

PAUL CURRIE

COACH STOKSTAD

GOLF



THE TEAM

DICK SIMMONS

HENRY SPURRIER

DEAN BAILEY

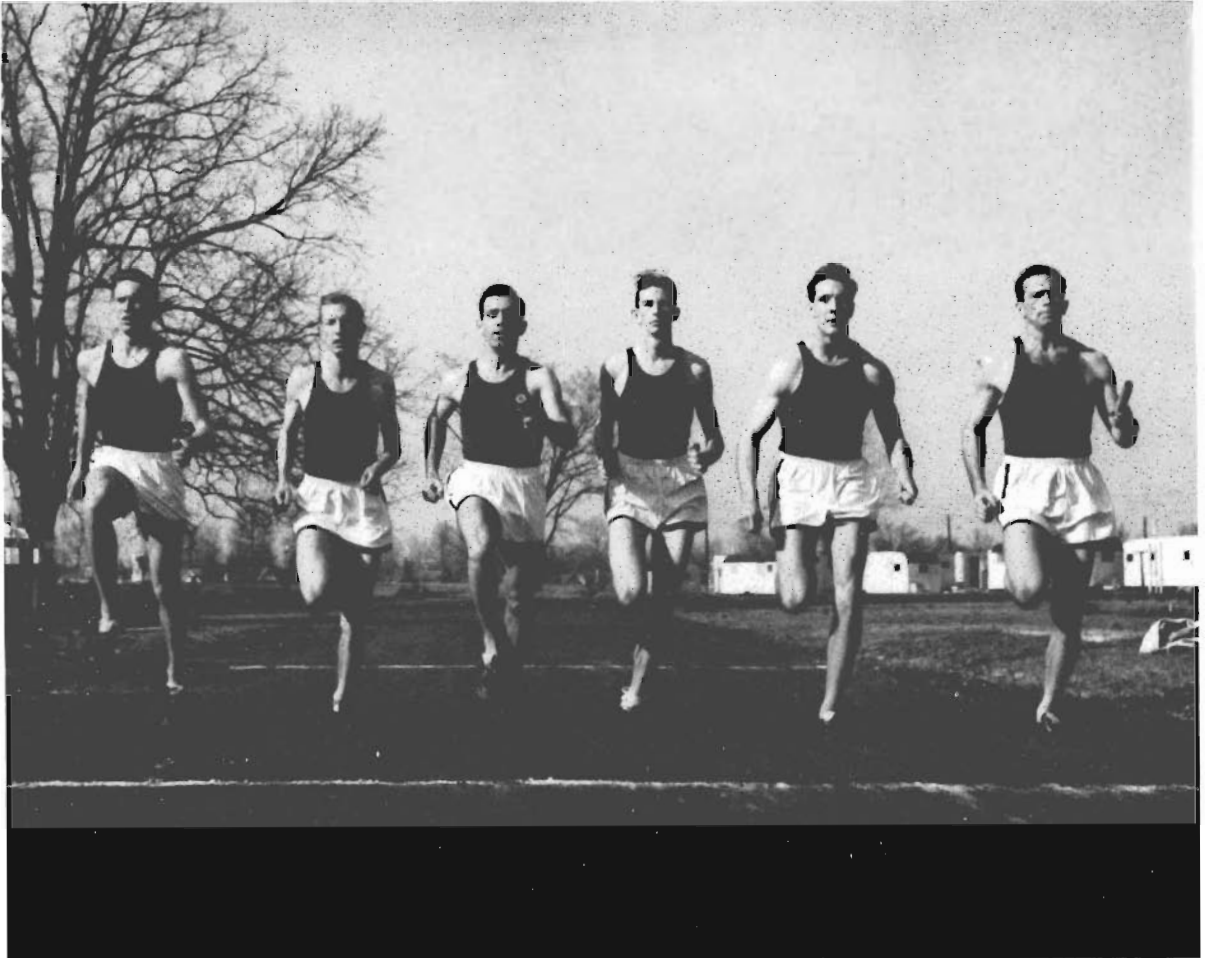
JOHN MURDOCK

COACH STOKSTAD

WINSTON CHEAIRS

CLIFFORD GREEN

TRACK



THE MILE RELAY TEAM

Left to right: Dick Porter, Evin Perdue, Billy Speros, Freeman Marr, Fletcher Scott, Frank Boswell.

OTHER MEMBERS OF THE TRACK TEAMS

Robert Jones

Bill Brazelton

Gayden Drew

Dickie Dickerson

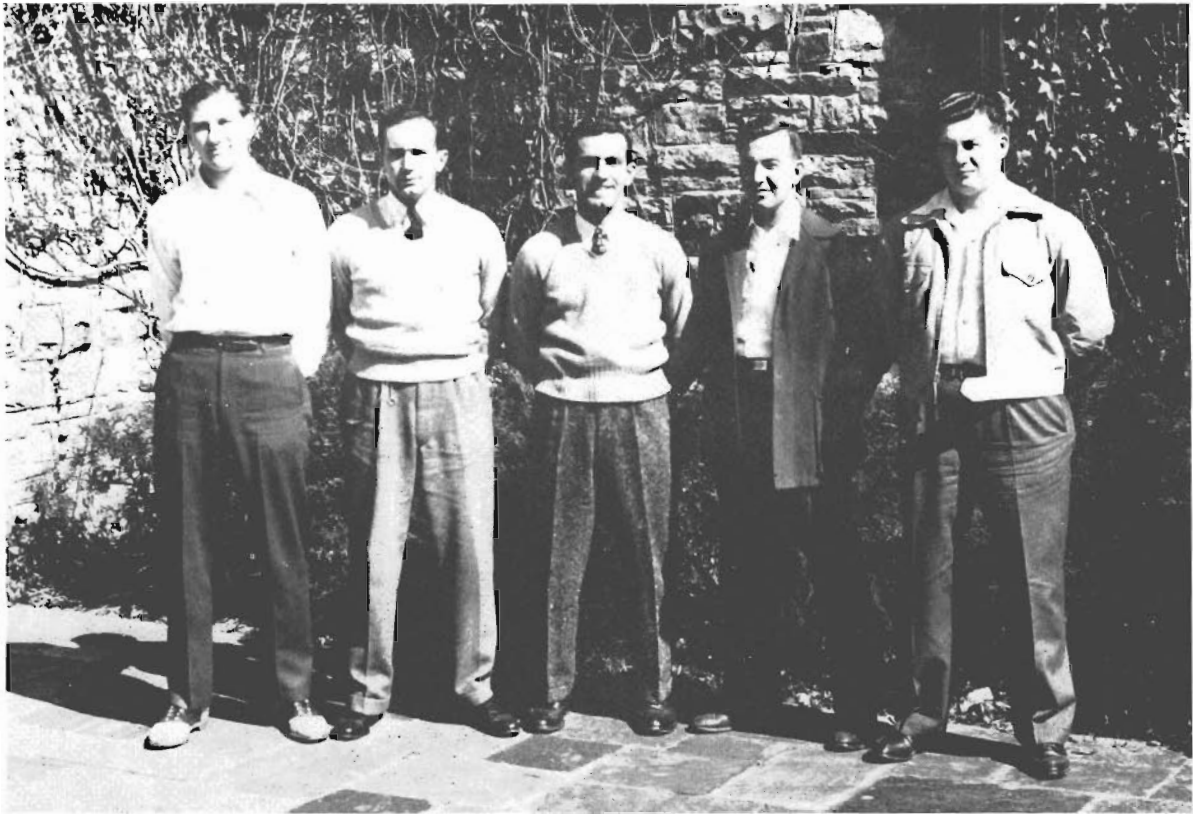
Willard Armstrong

COACHES

Al Clemens

John Osman

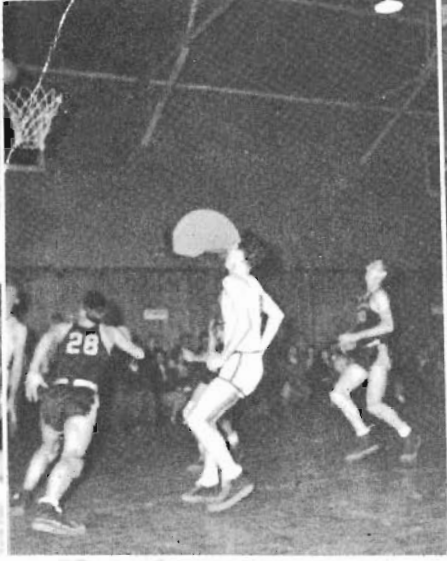
MEN'S INTRAMURAL BOARD



Left to right: Dean Bailey, Frank Boswell, Billy Speros, Robert Miller, William Hitt. Not pictured: William Haley.

The Men's Intramural has for its aim the stimulation of interest in inter-fraternity athletics. It arranges tournaments between the fraternities and recognizes outstanding members of these teams. The winners of the various tournaments for 1946-'47 are:

- Touch Football Sigma Nu
- Basketball Sigma Alpha Epsilon
- Volleyball Sigma Alpha Epsilon





F E A T U R E S

Mickey Dougherty



LUCILLE HAMER



BETTY SCHNEIDER



DOT LOVE



ANNA LOUISE ROTHER



SALLY LUNDY
Portraits by George W. Hayley Studio



HILMA SEAY



ERNEST FLANIKEN

HALL OF FAME



MARY LANGMEAD



BETTY BOUTON

The highest honor that can be awarded a senior at Southwestern is to be numbered in the Hall of Fame. Candidates for membership are nominated by the Student Council and the final selection is made by the presidents of the sophomore and junior classes, the vice-president of the student body, and the President and the Dean of the college. Indispensable qualifications are leadership, scholarship, character, and service. This year those honored are:

ERNEST FLANIKEN
JULIA WELLFORD
MARY LANGMEAD
BETTY BOUTON
WILLIAM SPEROS



JULIA WELLFORD



WILLIAM SPEROS



BETTY BOUTON
Miss Southwestern

POPULARITY WINNERS



LUCILLE HAMER
Most Attractive Co-ed



TOMMY HOUSER
Most Handsome Boy



BILLY HIGHTOWER
Most Popular Boy



ONEIDA PRUETTE
Most Stylish Co-ed



BILLY SPEROS
Best All-Around Boy

APRIL FOOL COURT



THE COURT

CLAIRE JAMES	JANE KILVINGTON
TRENT WOOD	BOB AMIS
BETTY SCHNEIDER	ONEIDA PRIJETTE
BILL BRYCE	ERNEST FLANKEN
DEAN BAILEY	JULIA WELFORD

Lady-In-Waiting	LUCILE HAMER
Lord-In-Waiting	TOMMY HOUSER
Queen	BETTY BOUTON
King	BILLY HIGHTOWER

APRIL FOOL CARNIVAL

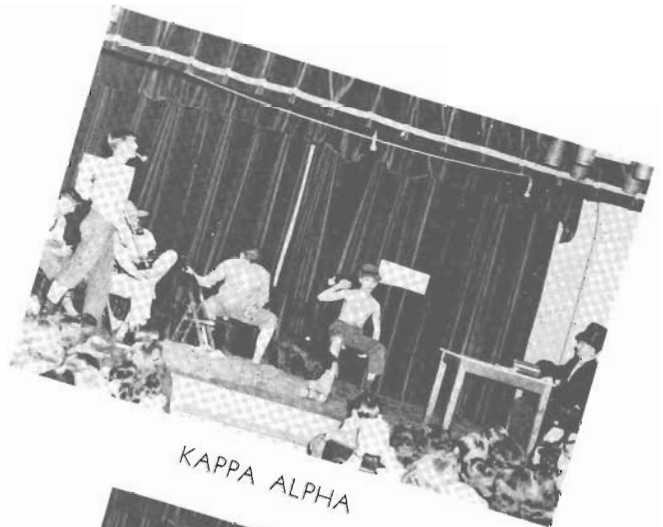


STUNT NITE

Sponsored by Alpha Omicron Pi Sorority



ALPHA TAU OMEGA



KAPPA ALPHA

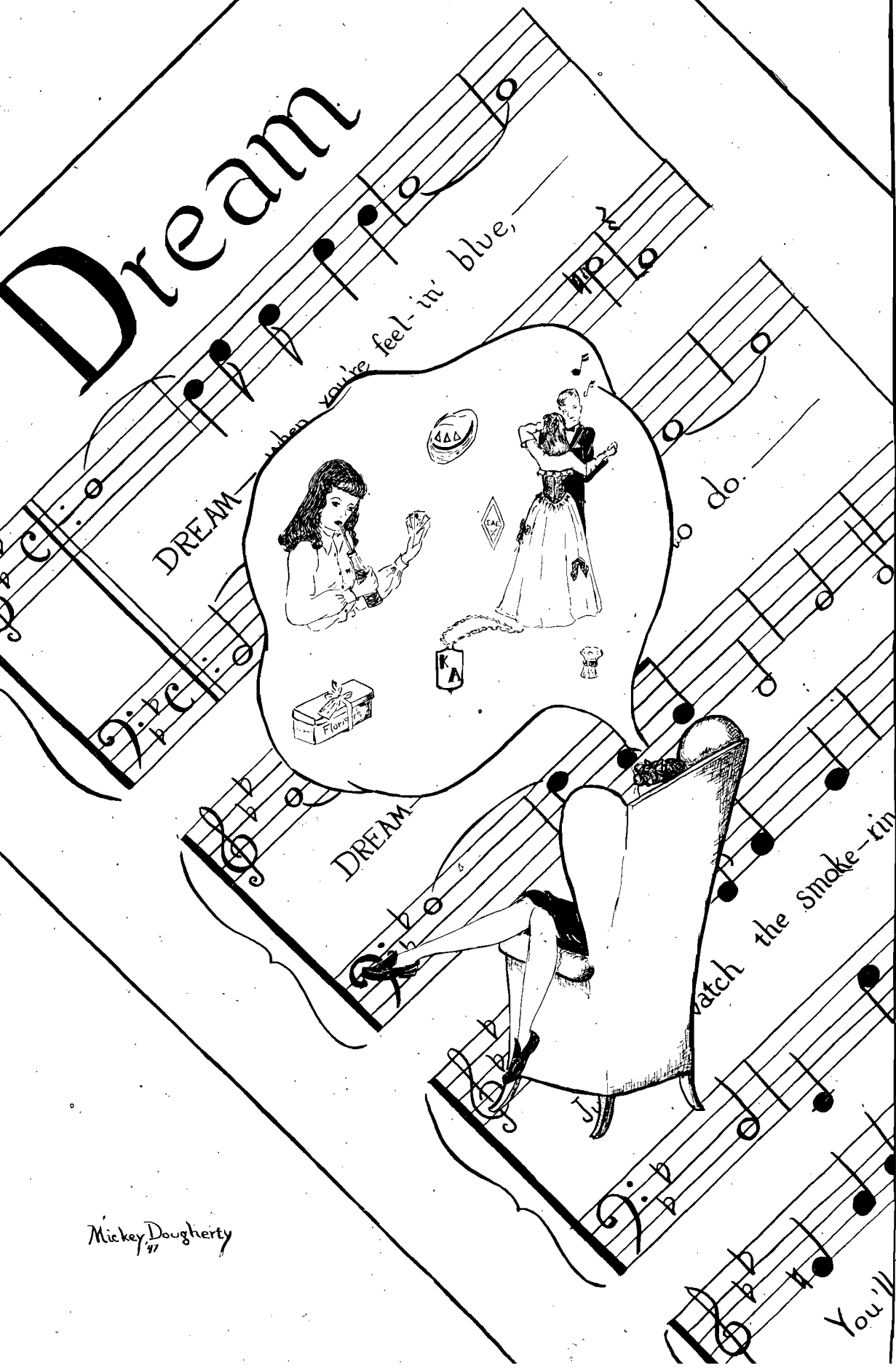


SIGMA NU



TRI DELTA

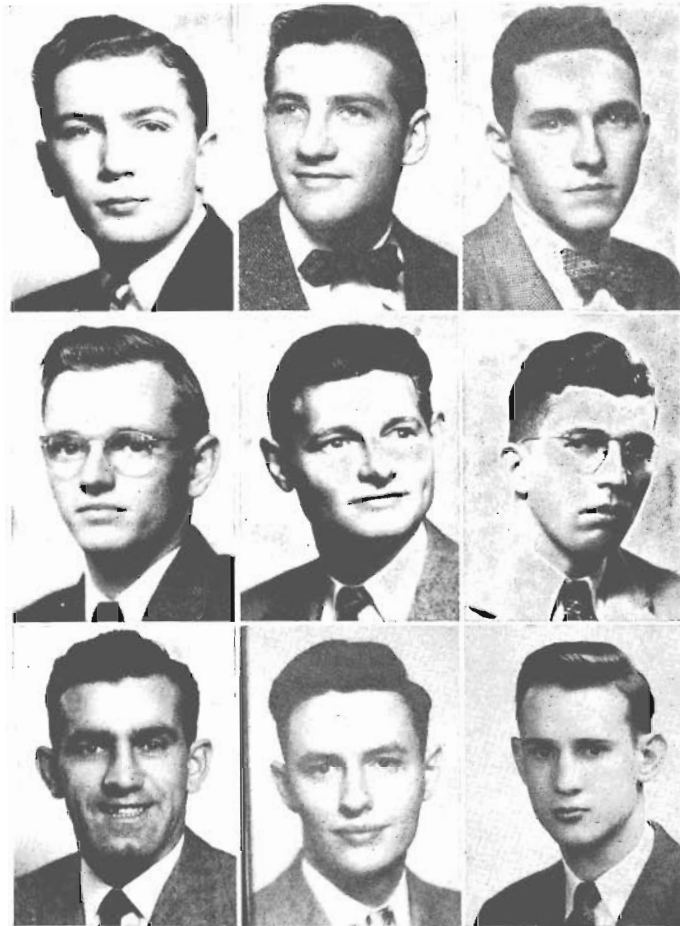
Dream



P
A
N
H
E
E
L
E
N
I
C

Mickey Dougherty '47

MEN'S PAN-HELLENIC COUNCIL

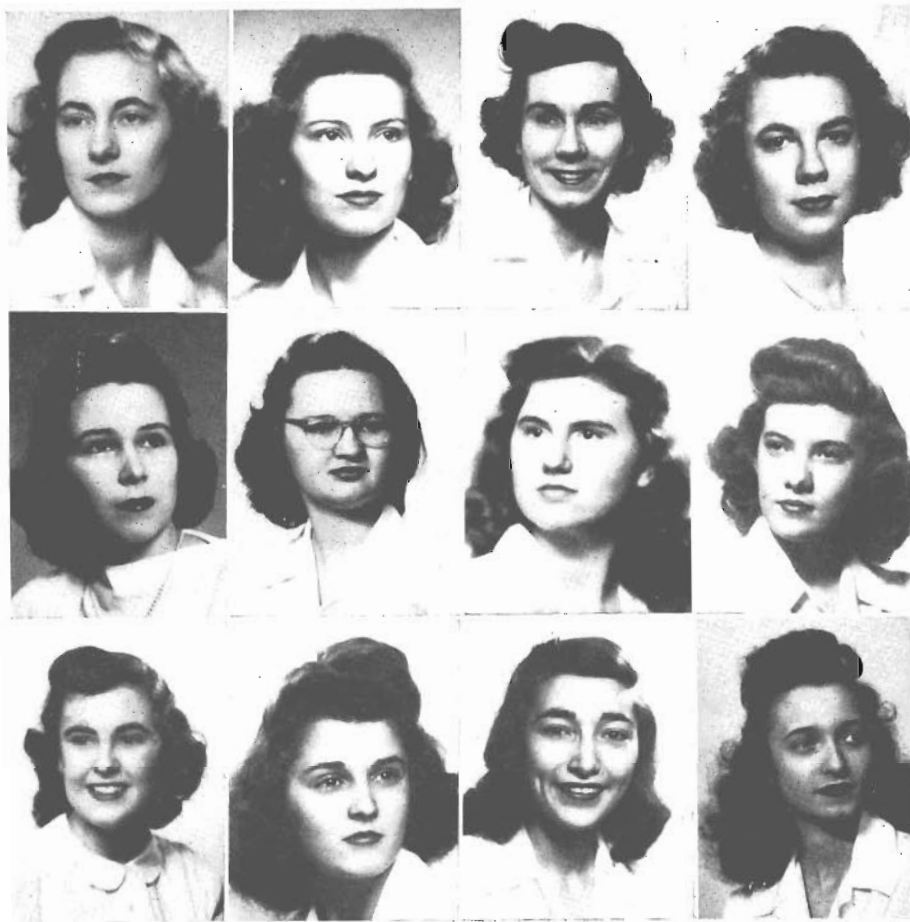


BILLY HIGHTOWER	President, Sigma Nu
DEAN BAILEY	Vice President, Kappa Alpha
DR. J. L. A. WEBB (Not Pictured)	Secretary-Treasurer
TOM DODSON	Kappa Alpha
WILLIAM JONES	Sigma Alpha Epsilon
JOHN WILSON	Alpha Tau Omega
TOM CULBERSON	Alpha Tau Omega
BILLY SPEROS	Sigma Nu
FRENCH HARRIS	Pi Kappa Alpha
SAM STEPHENSON	Kappa Sigma

NOT PICTURED

HOWARD HURT	Pi Kappa Alpha
BILL BRYCE	Sigma Alpha Epsilon
JOE KENNEDY	Kappa Sigma

WOMEN'S PAN-HELLENIC COUNCIL



DOT HOGAN	President, Zeta Tau Alpha
BETTY BOUTON	Vice President, Delta Delta Delta
JULIA WELLFORD	Secretary, Chi Omega
MARY LANGMEAD	Treasurer, Kappa Delta
CLAIRE JAMES	Representative, Alpha Omicron Pi
SALLY THOMSON	Representative, Gamma Delta
ELIZABETH ANN FAIRLEIGH	Representative, Gamma Delta
JANE PHELPS	Representative, Kappa Delta
BETTYE LEE HANCOCK	Representative, Alpha Omicron Pi
PEGGY GALLIMORE	Representative, Zeta Tau Alpha
HAZEL BROWN	Representative, Delta Delta Delta
JANIE V. PAINE	Representative, Chi Omega



ADDINGTON
ANDERSON
CALDWELL
CARLETON



COBB
CONDER
CULBERSON
EDINGTON



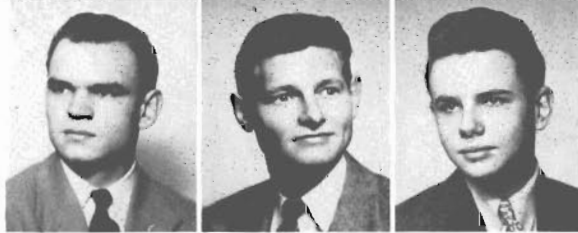
FLANIKEN
GORDON
HITT
HOPKINS



MONTGOMERY
NASH
NEMITZ
PATTEE



PITTMAN
SMITH, L.
TURNER
WHERRITT

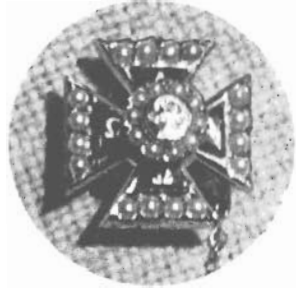


WILLIAMSON
WILSON
WOOD

ALPHA TAU OMEGA

TENNESSEE ALPHA TAU CHAPTER

Established at Southwestern in 1882.



OFFICERS

First Semester		Second Semester
WILLIAM TURNER	President	WILLIAM HOPKINS
ROBERT WHERRITT	Secretary	JAMES COBB
JOHN WILSON	Treasurer	LLOYD SMITH
MILTON ADDINGTON	Pledge Master	MILTON ADDINGTON
ERNEST FLANIKEN	Chaplain	IRVINE ANDERSON

MEMBERS

1947

MILTON ADDINGTON	WILLIAM TURNER
ERNEST FLANIKEN	JOHN WILSON

1948

GRAHAM GORDON (Affiliate)	ROBERT WHERRITT
WILLIAM HOPKINS	

1949

WHEELER CARLETON	HARRY KIDDLE
------------------	--------------

1950

IRVINE ANDERSON	JERE NASH
JAMES CALDWELL	WILLIAM NEMITZ
JAMES COBB	LEE PATTEE
STEVE CONDER	DONALD PITTMAN
TOM CULBERSON	CHARLES SMITH
ROBERT EDINGTON	LLOYD SMITH
WILLIAM HITT	GEORGE WILLIAMSON
ROBERT MONTGOMERY	DONALD WOOD



ARMSTRONG
ARNOLD
ARTHUR
BAILEY



BROWN
BRYANT
BULWINKLE
DARNELL



DODSON
DREW
MAXWELL
MOORHEAD



PAGE
POE, C.
POE, F.
POOLE



SMITH, H.
SYMES
TIDWELL
TUMILTY

KAPPA ALPHA

ALPHA EPSILON CHAPTER

Established at Southwestern in 1887



OFFICERS

First Semester		Second Semester
TOM TIDWELL	President	DEAN BAILEY
DON GORDON	Vice-President	DON GORDON
DEAN BAILEY	Secretary	BILLY SYMES

MEMBERS

1947

DON GORDON
CLIFF GREEN
HARLAND SMITH

BILLY SYMES
TOM TIDWELL

1948

DICK ARNOLD
DEAN BAILEY
LOWRY MAXWELL

JIM MOORHEAD
ED MAXWELL

1949

WILLARD ARMSTRONG
JOHN BILLINGS
STEVE BOLLING
RUSSELL BRYANT
TOM DODSON
HARVEY HENDLEY
SAM HENDLEY

NEIL LEONARD
GENE PAGE
FRANK POE
DICK SMITH
PAUL SNODGRASS
AUVERGNE WILLIAMS
RAY PARHAM

1950

JACK ARTHUR
EZZELLE BOWEN
BILL BROWN
CLARK BULWINKLE
BILLY CRAIG
MILLEN DARNELL
DOUG DODSON
GAYDEN DREW
CLARENCE ELAM
BILL GIBSON

FRANK GATTUSO
BILL HEDDEN
BOD HEDDEN
ED STRAIN
LEM TATE
DICK TUMILTY
FRED WHITE
LLOYD GRAVES
DICK PORTER



AMIS
BLANKENSHIP
BOLLING
BRYANT, J.



COBB
CURRIE
GLENN
HAUN



HILZHEIM
HOUSER
JOHNSON, J.
JOHNSON, T.



McINTOSH
McKNIGHT
McLEOD
MILLER



QUINLEY, E.
QUINLEY, J.
SCIANNI
STATLER



STEPHENSON
STOBAUGH
THOMAS
TURNAGE



TURNER
WATSON

KAPPA SIGMA

PHI CHAPTER

Established at Southwestern in 1882



OFFICERS

First Semester		Second Semester
SAM WATSON	Grand Master	SAM STEPHENSON
TOMMY HOUSER	Grand Procurator	BOB AMIS
VIRGIL BRYANT	Grand Master of Ceremonies	VIRGIL BRYANT
JIM TURNER	Grand Scribe	JIM TURNER
ROBERT MILLER	Grand Treasurer	ROBERT MILLER

MEMBERS

1947

JACK DARBY
JOE KENNEDY

BOB STOBAUGH

1948

JIM BLANKENSHIP
BOB BRABANT
JACK CONNORS
JACK HILZHEIM

TED JOHNSON
FRANK McKNIGHT
HARRY HAWKEN
MAC TURNAGE

1949

GUY BATES
DICK BOLLING
BOBBY COBB
BILL ELBRECHT
BILL FOWLER
BEN GILLILAND
HERBERT GLENN
TOM GOSWICK
BILL HATCHETT
TED HAY
BILL INGRAM

JULIUS JOHNSON
KENNETH KRESSENBERG
J. C. LEWIS
JOHN McKEE
JOHN MURDOCK
CHARLES PARK
J. C. SCIANNI
BILL SUTHERLAND
GLENN SWINGLE
BUCKY WALTERS

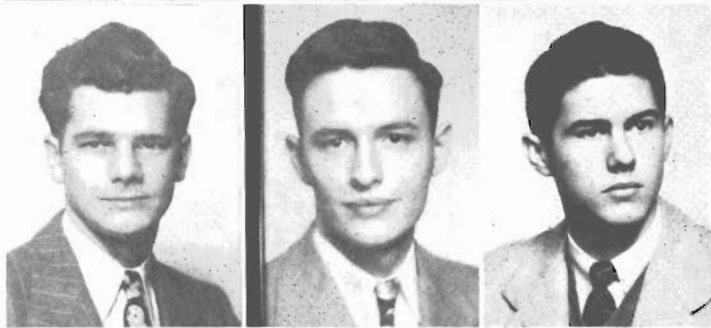
1950

ALAN BABIN
HENRY BEATY
CHARLES BRADLEY
JOHN BRYANT
PAUL CURRIE
BOBBY DAVIS
WALTER HAUN
JOE HESTER

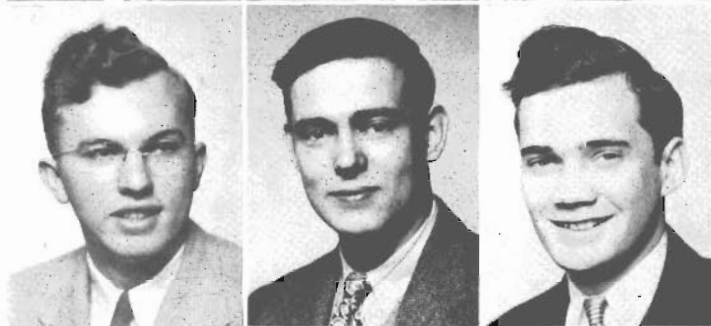
EARL QUINLEY
JACK QUINLEY
DAVID STATLER
JOHN A. THOMAS
BENNIE TUTT
JOHN WILLIFORD
JUDD WILLIFORD



BARNETT
BAUCUM
CARLISLE



HALEY
HARRIS
PIPKIN



RILEY
QUINN
SWEATT



TAYLOR
UTTER
WALLER

PI KAPPA ALPHA

THETA CHAPTER

Established at Southwestern in 1878



OFFICERS

President	FRENCH HARRIS
Vice President	DAVE JOLLY, JR.
Secretary	DAVE BARBER
Treasurer	TED BAUCUM

MEMBERS

1948

HOWARD HURT	DAVE JOLLY
VERNON INGRAM	

1949

TED BAUCUM	HARRY LOCKE
DAVE BARBER	PAUL KATES
DAVE BOESVERT	JACK SIMONTON
CLARENCE CAMFERDAM	WAYNE PATE
JACK CARLISLE	DAVID VAUGHT
IRA CARTER	GERALD SWEATT
CHARLES FLEET	BUD UTLEY
TOM GLENN	BOB UTTER
WILLIAM HALEY	DON WALTON
FRENCH HARRIS	

1950

CHARLES BARNETT	CARLIN STUART
MILLIGAN FOSSETT	TOMMY TAYLOR
WHARTON HAWKINS	BROOKE THOMPSON
BOB HENRY	BILL WALTON
RAYMOND NASH	TOM WEST
BLAKE PALMER	JIM WOOD
BILL RILEY	



ACROYD
BELL
BLAIR
BOSWELL
BRAZELTON
BRODERICK



BUCKINGHAM
CANON
CAREY
COOPER
COWAN
DOUGLAS, W.



DOUGLAS, W.
ELLIOTT
FOUNTAIN
GORMAN
GRAEBER
GRAVES



HARRIS
HATHORNE
HOLLINGER
JONES, W.
JONES, WM.
KERNODLE



LELAND
LONG
MANN
MARR
MILLARD
NORTON



OWEN
PAGE
PHILLIPS
PITMAN
POTTER
RANEY



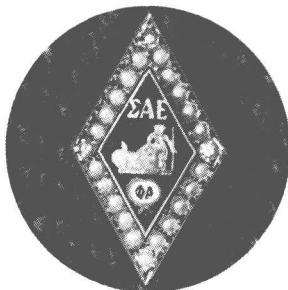
ROULHAC
SCHILLIG
SCOTT
SEIFERD
SIMMONS
TUCKER



THOMPSON
WARD
WOOD
WRIGHT

SIGMA ALPHA EPSILON

TENNESSEE ZETA CHAPTER
Established at Southwestern in 1882



OFFICERS

First Semester		Second Semester
BLAIR WRIGHT	President	WILLIAM BRYCE
EDWARD DEWEY	Vice-President	DICK LEE
WILLIAM LONG	Secretary	CARROLL COWAN
LESLIE TUCKER	Treasurer	BARRON SEIFERD
ROBERT MANN	Correspondent	JOHN BRODERICK

MEMBERS

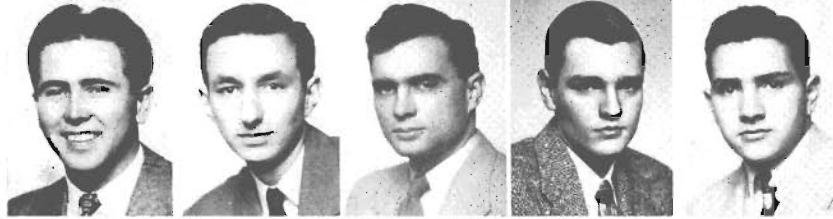
1947	
WILLIAM BRYCE CHAM CANON WINSTON CHEAIRS ED DEWEY	KARL FRANK WHARTON JONES ROBERT MANN HUNTER PHILLIPS
1948	
CRAFT DEWEY JOHN DOUGLAS WINSTON FLAKE BERSON FRYE WILLIAM HAYNES WILLIAM JONES BOB KLYCE	DICK LEE WILLIAM LONG FREEMAN MARR DICK SIMMONS NIMROD THOMPSON STANLEY TREZEVANT BLAIR WRIGHT
1949	
WILLIAM BELL JOHN BRODERICK TOM BUFORD BILL COX DAN HATHORNE ROBERT HAVERTY MARTIN HOLLINGER JIMMY HUDSON BILLY LEACH JOHN MILLARD CECIL OLIVER	BILL PADDOCK RHEW PAGE EVIN PERDUE PERCY PERKINS STEVE SCHILLIG FLETCHER SCOTT HENRY SPURRIER RALPH TEED LESLIE TUCKER TRENT WOOD
1950	
WILLIS ACKRIDGE JACK ACROYD GENE BERLIN CHARLES BERRY BUCK BLACKBURN SAM BLAIR DAN BOONE FRANK BOSWELL FRANK BRADSHAW BILL BRAZELTON HAM CAREY BOB COOPER CARROLL COWAN RICHARD DICKERSON WILLIAM DOUGLAS BEDFORD DUNNAVANT WILLIAM DURBIN JULIAN ELLIOTT BILL FITCHPATRICK	JOHN GORMAN HENRY GRAEBER MARK HARRIS EARL HAYES WALTER HOOKER CARROLL JOHNSON BILL LELAND HAROLD LIGON BUDDY McCANN PAUL MOSTERT RAYMOND NORTON LOUIS OST FRANK PEYTON CLIFTON PITMAN E. M. POTTER BARRON SEIFERD JASPER TEMPLETON E. C. WARD



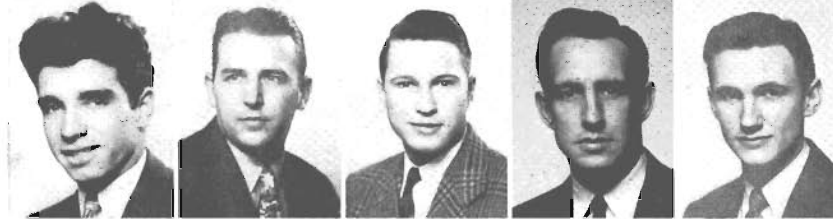
ADAMS
AGNEW
BELL
BENNETT
BERFIELD



BERNHOF
BLAKE
BRAKEFIELD
COMMANDER
DAWES



DILLMAN
ELLIS
EVANS, C.
EVANS, J.
FARRIS



FLANKEN
FUDGE
GWINN
HEMMEN, C.
HEMMEN, F.



HIGHTOWER
MARCRUM
MILLER
MITCHELL, B.
MITCHELL, W.



NORMAN
REID
SCHAEFFER
SCOTT
SINCLAIR



SPEROS
WARE
WATKINS
WOOD
YOUNG

SIGMA NU

EPSILON SIGMA CHAPTER



OFFICERS

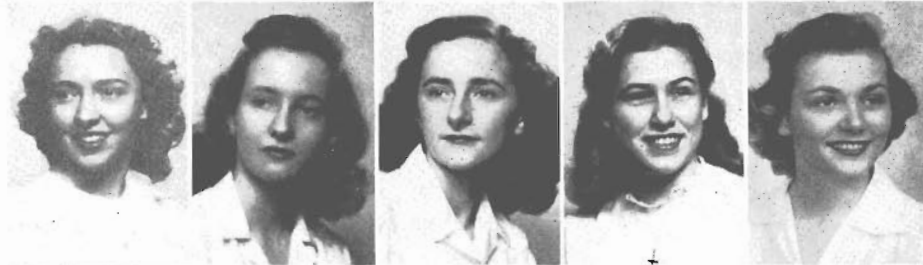
First Semester		Second Semester
BEN ARNOLD	Commander	BILLY SPEROS
RICHARD WOOD	Lt.-Commander	CONLEY HEMMEN
CONLEY HEMMEN	Recorder	RICHARD WOOD
TOM MILLER	Treasurer	KIRBY BAKER

MEMBERS

	1947	
CONLEY HEMMEN		BILLY SPEROS
	1948	
WILLIAM ANDREWS SAM FUDGE		JAMES E. ROPER
	1949	
LOUIS AGNEW BEN ARNOLD KIRBY BAKER FRANK BERFIELD FRED BLAKE JOHN BRAKEFIELD M. C. COMMANDER LATHAM DANIEL		EUGENE DAWS BILLY HIGHTOWER CHARLES MARCRUM TOM B. MILLER RICHARD MUSSETT ROBERT NORMAN JAMES C. REID RICHARD WOOD
	1950	
HARRISON ADAMS JOHN REID BELL RALPH BENNETT ERNEST BERNHOFT WILBER CALLIHAN JAMES E. CAREY BART CHRISTOPHER LELAND J. CORNEILLE PAUL DILLMAN DON ELLIS CECIL EVANS JOHN EVANS RAY FARRIS FORREST FLANIKEN WALKER GWINN		FRANK HEMMEN JACK KNOX BEN MITCHELL WILLIAM MITCHELL WILLIAM MITCHUM JACK MUSSETT EUGENE SCHAEFFER JAMES K. SCHMIDT MARSHALL SCOTT BURTON SINCLAIR DAMON SUTTON PAUL WARE BEDFORD WATKINS GORDON YOUNG



JAMES
PRIDGEN
FLANIKEN
QUARLES
BEGGS



ALSTON
ARNOLD
AVERY
BOISBLANC
CULLINS



DE WAR
DOUGHERTY
GIVENS
GRAEBER
HAILE



HAIRE
HALL
HANCOCK, B.
HANCOCK, J.
HILL



MARSHALL
NEWSUM
PAGE
POWELL
RIER



SCHNEIDER
SHAPPLEY
SHEA
STEWART
UPSHAW

ALPHA OMICRON PI

KAPPA OMICRON CHAPTER

Established at Southwestern in 1925



OFFICERS

President	CLAIRE JAMES
Vice President	ANN PRIDGEN
Recording Secretary	LEONE FLANIKEN
Corresponding Secretary	VIVIAN QUARLES
Treasurer	LILY ANNE BEGGS

MEMBERS

1947

LEONE FLANIKEN	CLAIRE JAMES
EVELYN GIVENS	ANN PRIDGEN
BETTY LEE HANCOCK	VIVIAN QUARLES

1948

CATHERINE ARNOLD	KAY HOAG
LILY ANNE BEGGS	ESTELLE NEWSUM
MICKEY DOUGHERTY	JOE ALICE PAGE
NERA HILL	BETTY SHEA

1949

MARILYN ALSTON	MARGIE PHELPS
ANN AVERY	CAROLYN RIER
BETTY CONNALLY	BETTY SCHNEIDER
JO ANN HANCOCK	JANE STEWART
PEGGY HAILE	JOY UPSHAW
PEGGY MARSHALL	BETTY ALICE VILLYARD

1950

BETTY BOISBLANC	JOANNE HALL
BARBARA CULLINS	PEGGY LAND
ANN DE WAR	LOUISE MIDDAGH
ALEENE GRAEBER	MYRTLE POWELL
PEGGY HAIRE	PATTY SUE SHAPPLEY



WELLFORD
WALLACE
HAMER
HARDING
PAINE



AMIS
BAGGETT
BAKER
BARRIER
BEANE



CARROLL
CLAY
COLE
CUNNINGHAM
CURRIER



GILLESPIE
HITCH
HOLMES
HOWARD, M.
HOWARD, S.



KING
LOARING-CLARK
McGEE
MAURY
METZGER



OGDEN
PATTERSON
RADFORD
REID
TAYLOR



THOMASON
TOWNSEND
TRACOFF
VAUGHN
WADDELL



WALKER
WEAVER
WILKERSON
WILLIAMS
WITHERS

CHI OMEGA

KAPPA BETA CHAPTER

Established at Southwestern in 1922



OFFICERS

JULIA WELLFORD	President
MAY WALLACE	Vice-President
LUCILE HAMER	Secretary
MAY MAURY HARDING	Treasurer
JANIE V. PAINE	Pledge Mistress

MEMBERS

1947

IRMA WADDELL
MAY WALLACE

JULIA WELLFORD
BARBARA THOMPSON

1948

PEGGY BAKER
BEVERLY BEANE
MARTHA CARROLL
CAROLYN CUNNINGHAM
MARY BELLE CURRIER
MINNIE LEE GILLESPIE
LUCILLE HAMER
MAY MAURY HARDING
WILMARY HITCH
LUCILE MAURY

JANE OGDEN
JANIE V. PAINE
MARY ANN ROBERTSON
JEAN TAYLOR
BEVERLY TOWNSEND
CHRISTINE TRAIKOFF
ALMA VAN HOOK
GLORIA VAUGHN
VIRGINIA ANN WITHERS
MADELON WALKER

1949

ALICE ALLEIN
JEANNE AMIS
JANE CLAY
VINTON COLE
BETTY JANE HALL

SALLY HOWARD
MARGARET LOARING-CLARK
ELOISE METZGER
ANNE PATTERSON

1950

ANN BAGGETT
ANN BARRIER
CAROL CABLE
LOUISE FITZHUGH
EULA HOLMES
MARY HOWARD
GERE KING

FRANCES LEE McGEE
BERTA RADFORD
HARRIET REID
PATRICIA WEAVER
MILDRED WILKERSON
JOAN WILLIAMS



BOUTON
LYNCH
MORRIS
SCOTT, N.
SCOTT, A.



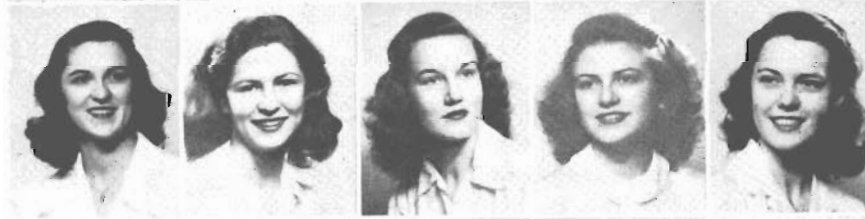
ABBOTT
BITNER
BRENT
BROWN
BURCHETT



CALDWELL
CAUSEY
EDENS
ESTES
FRANK



GIDEON
HENRY
KILVINGTON
LANGHART
LITTLE



LOVE, A.
LOVE, D.
LUNDY
McATEE
McLEAN



O'HEARNE
PARKER
PEOPLES
RAGLAND
SHELTON



SIBLEY
SIDES
WILLIAMSON
WITHERS
WOODSON

DELTA DELTA DELTA

DELTA PSI CHAPTER

Established at Southwestern in 1931



OFFICERS

President	BETTY BOUTON
Vice-President	KATHERINE LYNCH
Recording Secretary	CAROL MORRIS
Corresponding Secretary	NANCY SCOTT
Treasurer	ALICE SCOTT

MEMBERS

1947

BETTY BOUTON
NORMA ESTES
LOUISE FRANK
MARY GIDEON
JEAN LANGHART

KATHERINE LYNCH
SUZANNE RANSOM
ALICE SCOTT
NANCY SCOTT
JANE WILLIAMS SIDES

1948

HAZEL BROWN
HARRIET CAUSEY
ANNE LOVE
ESTELLE McLEAN
JOANNA McCLELLAN

JEANNE O'HEARNE
VIRGINIA PEOPLES
THELMA RAGLAND
JANE KILVINGTON
NORMA SHELTON

1949

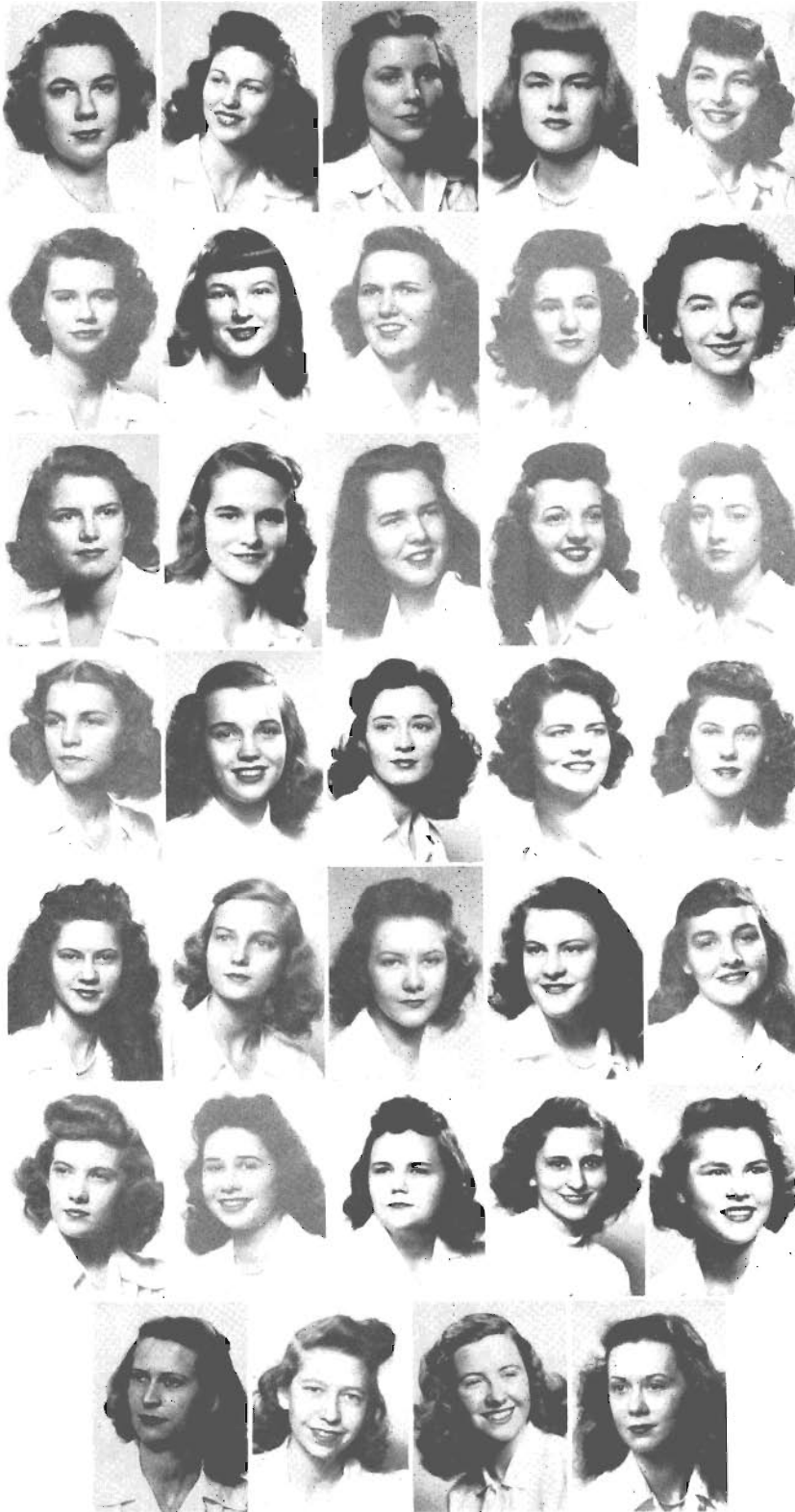
JEANNE ABBOTT
ELLA BAILEY
VIRGINIA BRIGGS
PAT CALDWELL
MILDRED CLAIRE CURTIS
JEANNE EDENS
MARY NELL GRAINGER

NANCY HAMES
SUE HENRY
NANCY LITTLE
SALLY LUNDY
TEMA PARKER
MARGIE VICKERS
STANLEY WILLIAMSON

1950

CAROL BITNER
MARY VIRGINIA BURCHETT
DOT LOVE
JANE McATEE

SHIRLEY SIBLEY
BETTY MAE WITHERS
JANE WOODSON



LANGMEAD
WEBB
PARSONS
DE MERE
REYNOLDS

ASH
BROWN
CATCHING
CLARY
DEWBRE

DUDNEY
GILLESPIE
GRIFFIS
KING
KING

LANGHAM
LEATHERWOOD
McDEARMAN
MASINO
MAXWELL

MEAD
MORROW
NICHOLS
OLIVER
PATTERSON

PHELPS
PRUETTE
RAMSEY
REEVES
RICE

SCRUGGS
SPELLINGS
STEINDORFF
WILKINSON

KAPPA DELTA

ALPHA DELTA CHAPTER

Established at Southwestern in 1925



OFFICERS

President	MARY LANGMEAD
Vice President	BETTY BYNUM WEBB
Secretary	PEGGY PARSONS
Treasurer	LEONA DE MERE
Editor	CAROLYN REYNOLDS

MEMBERS

1947

MARY LANGMEAD
MARY FRANCES McDEARMAN
JANE MANN
RUBY ORGAIN

PEGGY PARSONS
MARTHA PITTMAN
BETTY BYNUM WEBB

1948

MARGARET AUSTIN
LEONA DE MERE
MARY LOU NICHOLS

CAROLYN REYNOLDS
MARY NELL WILKINSON

1949

GLORIA ASH
MARY LYNN BEAN
MURIEL CLARY
NANCY DAVIS
ELIZABETH DUDNEY
JANE KING
JEAN KING
BETTY LANGHAM

SARA MAXWELL
BEVERLY MORROW
JANE PHELPS
ONEIDA PRUETTE
EMILY RICE
MARVILENE SCRUGGS
LENORA SPELLINGS

1950

ANN BROWN
VIRGINIA CATCHING
SARA COOPER
JANE DEWBRE
ANN FAQUIN
JEANNE GILLESPIE
RUTH EDNA GRIFFIN

ELIZABETH LEATHERWOOD
JOY MASINO
MYRLE OLIVER
JEANNE PATTERSON
MARY ANN RAMSEY
ANN ROSS REEVES
DOROTHY STEINDORFF



HOGAN
BURNETT
HARDWICK
ROBINSON, N.
ALLEN

BOISEN
BRANTLEY
CROSSAN
DAUNHAUER
DEBERRY

ELLINGSON
GALLIMORE
HARRISON
HESSELBEIN
INCE

JONES
LAUGHTER
LEE
MARTIN
MASON

MINDERMAN
MULDER
NUNNERY
PHILLIPS
RHEA

ROBINSON, B.
ROPER
SKOUTERIS
STOKES
TATE

WILSON
WRIGHT
ZEPATOS

ZETA TAU ALPHA

BETA SIGMA CHAPTER

Established at Southwestern in 1929



OFFICERS

President DOT HOGAN
Vice-President BARBARA BURNETT
Secretary MARGARET HARDWICK
Treasurer NANCY ROBINSON

MEMBERS

1947

CATHERINE HARRISON
CAROLYN HESSELBEIN
DOT HOGAN
PEGGY LAUGHTER
SARA GREY McCALLUM

CATHERINE MARTIN
ADELAIDE RATTAN
MARY LOUISE RHEA
MAYME W. TATE

1948

REGINE BACOT
BETTY JO BRANTLEY
PEGGY GALLIMORE
MARGARET HARDWICK
VERA INCE
PATRICIA PARK

NANCY ROBINSON
ANNA LOUISE ROTHER
RUTH STOKES
MARY ELLEN VACCARO
RACHEL UTLEY
DOROTHY ANN WILSON

1949

MARGARET CROSSAN
JEAN ELLINGSON
BETTY FAUX

MARJORIE LEAK
MARGARET NUNNERY
CARMEN ROPER

1950

MARJORIE ALLEN
MARGARET BOISEN
HELEN RUTH COPLIN
KATHRYN DAUNHAUER
HELEN DeBERRY
VIRGINIA JONES
BETTY LEE

BETSY MASON
MARY ANN MINDERMAN
VIRGINIA MULDER
WENDELL PHILLIPS
BETTY ROBINSON
GERALDINE ZEPATOS

GAMMA DELTA

Established at Southwestern in 1945



BATTLE
COLE
FAIRLEIGH
GARRAWAY



PEETS
THOMSON
TRUAX

OFFICERS

President	SALLY THOMSON
Vice-President	ELIZABETH ANN FAIRLEIGH
Secretary	PEGGY McALEXANDER
Treasurer	BETTY JEAN CULLINGS

MEMBERS

1948

GLENN MORRIS

1949

COZETTE COLE
BETTY JEAN CULLINGS
ELIZABETH ANN FARLEIGH

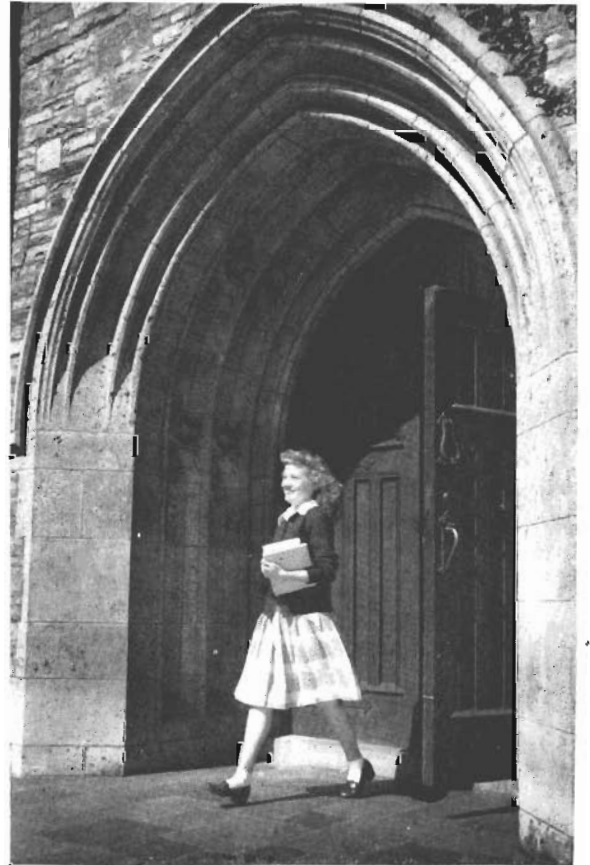
ORA LEE GARRAWAY
PEGGY McALEXANDER
SALLY THOMSON

1950

MARY ELLA BATTLE
ELIZABETH ANN PEETS

BILLIE PRYOR
REBECCA TRUAX









1946-1947

- SEPT.**—Freshmen arrive and are oriented by their respective student counsellors . . . Opening convocation and the beginning of classes . . . Largest enrollment in the history of the college . . . Dormitory girls aghast at the unfinished condition of Voorhies.
- OCT.**—Sororities and fraternities hold rush season and pledging services . . . Student Council dance ends Freshman regulations . . . Tommy Houser selected "Dream Boy" at Torch backward dance . . . Georges Monhard arrives from France as exchange student . . . Intramural football gets underway . . . Lynx team plays Millsaps.
- NOV.**—Homecoming Dance and football game with Cumberland College . . . Lundy, Seay, Hamer, Love, Rother, and Schneider selected as beauties . . . Faculty stunt steals the show at the W.S.S.F. Varsity show and defeats student basketball team . . . English student, Joan Davies, arrives on campus . . . Anderson, Taylor, and Brown elected freshman class officers.
- DEC.**—Christian Union Cabinet holds annual Christmas party for underprivileged children . . . Christmas music presented by choir as Vesper program . . . Southwestern Players present "Family Portrait" . . . Basketball season started.
- JAN.**—Southwestern's Hilma Seay chosen Maid of Cotton . . . Exams . . . Choir begins tour of the Tri-States.
- FEB.**—Religious Emphasis Week with Dr. James Jones as speaker . . . Student Body reception for Dr. and Mrs. Diehl . . . Betty Bouton and Billy Hightower elected to rule over the April Fool Carnival for second year . . . Lynx men begin Track training . . . Alpha Theta Phi taps fifteen.
- MAR.**—Sou'wester taken over for a day by the co-eds . . . April Fool play and dance are great success . . . Betty Bynum Webb is PiKA Dream Girl . . . Kappa Alpha and Kappa Delta win cups at AOPi Stunt Nite . . . Betty Bouton chosen Miss Southwestern . . . Hightower, Speros, Houser, Hamer, and Pruette also place in Popularity elections.
- APRIL**—Student Body campaigns and elections . . . Bob Amis, Lucille Hamer, and Dean Bailey are officers for the coming year . . . S'westerners active in track work . . . Freshman class Vespers and cantata.
- MAY**—Ernest Flaniken, Betty Bouton, Julia Wellford, Mary Langmead, and Billy Speros chosen for the Hall of Fame . . . Players present "On Stage" . . . Pan Workshop . . . O.D.K. and Torch tap new members . . . Exams.
- JUNE 3rd**—THE DAY.

Autographs

Advertisements





SOUTHWESTERN

MEMPHIS, TENNESSEE

A Standard College of Arts and Sciences
A College of High Ideals and Personal Attention

The greatest thing about a college is the character and ability of its instructors. A grateful pride is felt in the faculty of Southwestern. The greatest care has been used in the selection of these men. They are all Christian men of sound scholarship and they are great teachers.

The architecture is of the collegiate Gothic type and the plant is entirely modern, beautiful and enduring.

Nothing has been spared that contributes to the highest good and efficiency of the individual student, and as a result Southwestern offers unusual advantages.

*The
1947
Lynx*

For many years it has been our privilege to print "THE LYNX." This, to us, is concrete evidence that our efforts have been well received from year to year.

When the finest in printing is desired, other discriminating customers likewise turn to STANDARD, year after year. A yearbook, a letterhead, a booklet, a business form, or whatever; each job is welcomed and receives painstaking attention by STANDARD craftsmen.

Custom-tailored printing is our business, and we have built a well-deserved reputation on the quality of our work. We shall enhance and enlarge this reputation in years to come by continued production of printing to which we—and our customers—can point with pride.

STANDARD PRINTING & SUPPLY CO.

MEMPHIS

Printers of "THE LYNX" and other outstanding annuals

PHOTOGRAPHY



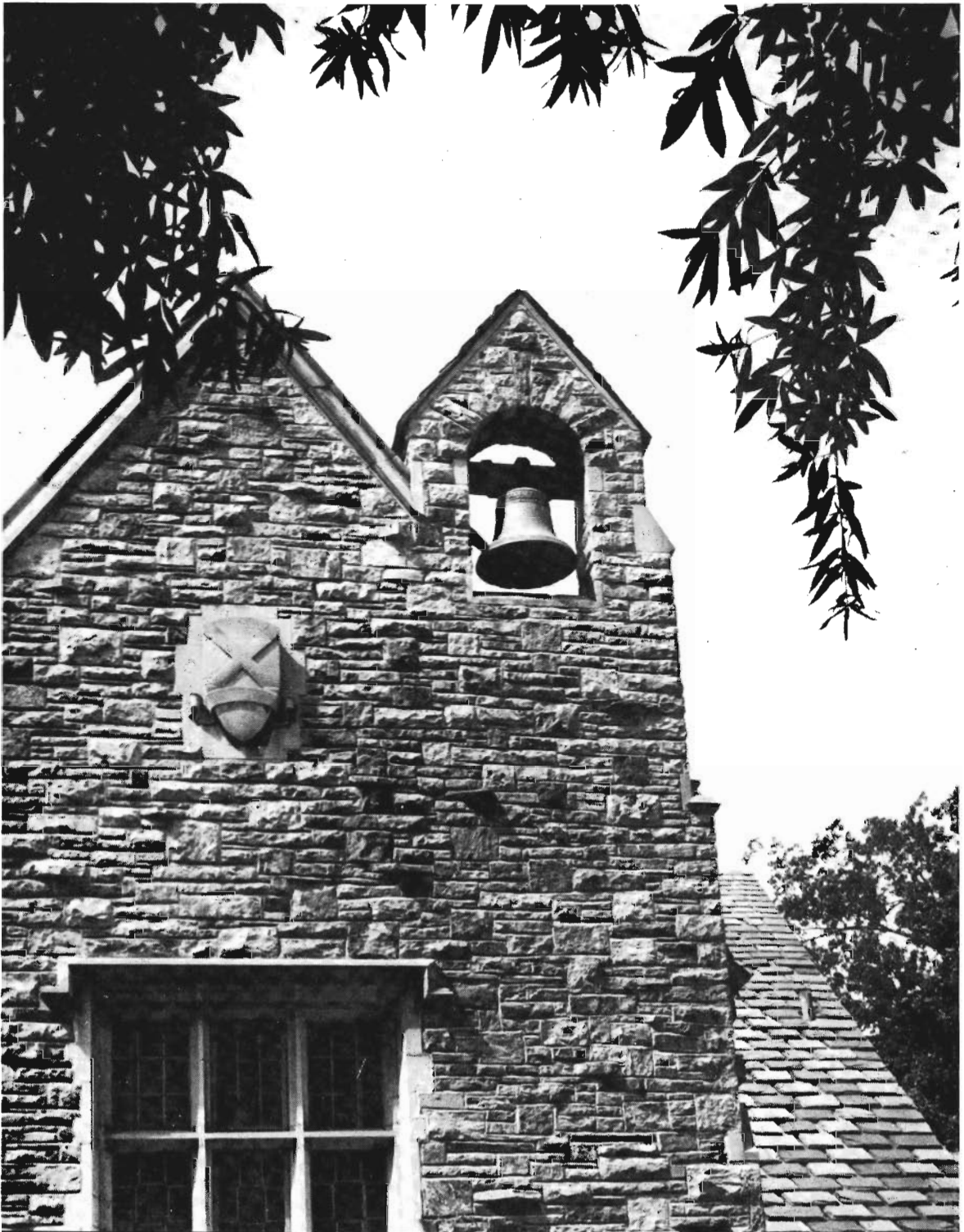
GEO. W. HAYLEY

STUDIO

PHONE 5-1927

751 POPLAR AVENUE

MEMPHIS



BLUFF CITY ENGRAVING CO. INC.

• PHOTOENGRAVERS •

120 MADISON AVE.

• MEMPHIS, TENN.

The Priceless Ingredient

In the City of Bagdad lived Hakeem, the Wise One, and many people went to him for Counsel, which he gave freely to all, asking nothing in return.

There came to him a young man, who had spent much but got little, and said:

"Tell me, Wise One, what shall I do to receive the most for that which I spend?"

Hakeem answered: "A thing that is bought or sold has not value unless it contains that which cannot be bought or sold. Look for the Priceless Ingredient."

"But what is the Priceless Ingredient?" asked the young man.

Spoke the Wise One: "My Son, the Priceless Ingredient of every product in the market-place is the Honor and Integrity of him who makes it. Consider his name before you buy."

S. C. TOOF & CO.

PRINTERS • LITHOGRAPHERS • STATIONERS

195-203 MADISON AVENUE • MEMPHIS, TENN.

ED'S Camera SHOP

1327 MADISON

AUTHORIZED DEALER:

ARGUS
EASTMAN
REVERE
GRAFLEX

*Everything for the
Photographer*

ED KIRCHNER, Owner

Phone 7-5280

Jeff F. Hicks Motors

935 UNION

Nash

COMPLIMENTS

ANDERSON, CLAYTON & CO.

COTTON MERCHANTS

Drink

Coca-Cola
TRADE-MARK REG. U. S. PAT. OFF.

In Bottles

Compliments of

**T. J. WHITE &
COMPANY**

★

COTTON

Compliments

of

BARNWELL & HAYS

Balfour Fraternity Jewelry

"THE OLD RELIABLE"

Send All Orders To
L. G. BALFOUR
2104 5th Ave., North
Birmingham, Ala.



READY TO WEAR
ACCESSORIES
MILLINERY
FINE SILVER AND GIFTS

The HELEN *Shop*

1808-1818 UNION AVE.—MEMPHIS 4, TENNESSEE

Aren't You GLAD You Went to
SOUTHWESTERN?

GEO. T. ROY, INC.

JEWELER

Geo. T. Roy
44 So. Main St.

Martin P. Hood
Phone 8-3869

Paul's Shoe Store

104 So. Main

SHOES — BAGS — HOSIERY

Arthur Seelbinder

Home Furnisher

1517 Union

MEMPHIS, TENN.



Compliments
of

Leo Kahn Furniture Co.

173 So. Main

Andrews & Ludlam

COTTON MERCHANTS

MEMPHIS, TENN.

CALL ORKIN TODAY

There is no need to tolerate unsanitary conditions in the home or business. ORKIN will quickly rid your home or business of insect pests and vermin with safe, scientific methods. Estimates given without obligation.

CALL 8-7311

No Charge for Inspections and Estimates

KYLE & CO.

COTTON

52 SOUTH FRONT STREET

MEMPHIS,
TENN.

Compliments
of

Vaiden Warehouse



Specialize in

WEDDINGS & PORTRAITS

Chas. N. Tigrett Studio

1503 Union Ave.

Towers Bldg.

Phone 36-6405

Night Ph. 36-1944

AIR CONDITIONING

Frances Ross Shops

"Styles that are Smartly Different"

315 So. Sommerville St.
Linden Circle Theatre Bldg.

1867 Madison — Gilmore Apt. Bldg.

83 Union Ave. — Loew's Palace Theatre Bldg.

1647 Union Ave. — Belvedere Section

W. J. BRITTON & COMPANY

COTTON

48 So. Front St.

Memphis, Tenn.

Allenburg Cotton Co.

COTTON MERCHANTS

Memphis, Tennessee

Compliments of a Friend

To

The Class of '47

HEADQUARTERS FOR SCHOOL PINS, RINGS, FRATERNITY JEWELRY

The Gift Centre of the South

The Brodnax name on the
box adds much to the value
but nothing to the cost.



GEO. T. **BRODNAX, INC.**

Jewelers • Main at Monroe • MEMPHIS



"A GOOD DAILY HABIT"

Every day you'll find jolly crowds from Southwestern enjoying good things to eat and drink at one of the two Fortune's

Fortune's Belvedere
Fortune's Jungle Garden

Radios
 Communicating
 Systems
 Recording Equip-
 ment
 Small Electrical
 Appliances



Refrigerators
 Air Conditioners
 Beverage Coolers
 Meat Cases
 Deep Freezers

Owens Radio & Refrigeration Co.
SALES & SERVICE

Day 2-0426
 Nite 48-2056

1367 Madison Ave. Memphis 4, Tenn.

Compliments

of

Inter City Trucking Co.

Weona No. 2

651 NORTH McLEAN

Quality Meats
 Fresh Vegetables
 Canned Goods

Proprietor, Charles Garavelli

**"GO
 JOLLY"**

WITH
 TWO-WAY
 RADIO

Phone 5-4411



TRUCK RENTALS

Phone 5-5776 — 282 Court

DRIVEURSELF CARS

Phone 37-6326 — 110 So. Second

Orgill Bros.

See the new ADMIRAL
 Radios and Refrigeration
 Before You Buy

AT YOUR FAVORITE DEALER'S

Compliments of
The Cotton Boll

"BEST IN EATS & DRINKS"

MEMPHIS, TENNESSEE



**CAFFEY ROBERTSON
 COMPANY**

Exports—Merchants—Domestic

MEMPHIS 3, TENN., U.S.A.

Tom B. Jones

REALTOR

531 COMMERCE TITLE BLDG.

MEMPHIS, TENN.



Congratulations

TO

The Class of '47



1531 UNION AVENUE

CALL 7-3622

radios pianos records
 sheet music • radio repair
 recorders musical novelties

Party Entertainment Arranged



