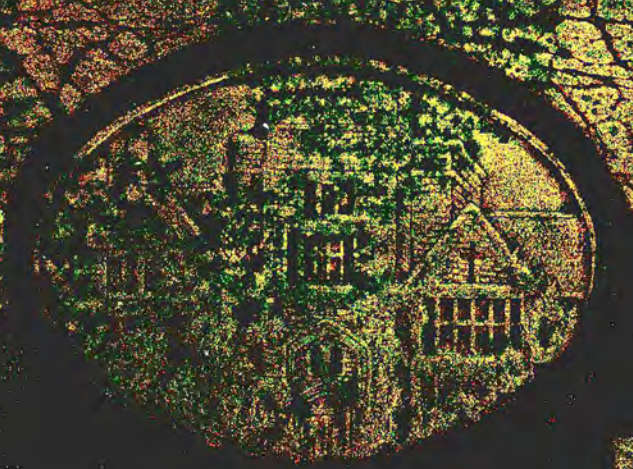


# THE JOURNAL



1940



# THE LYNX

GEORGE JACKSON • EDITOR - - WM. DONELSON • BUS. MGR.



DESIGNED BY  
• BAILEY CAMPBELL

The annual publication of the students of Southwestern,  
a reminder of happy days that will vivify the memories  
of Alma Mater down the passing years.





L U N U  
1 9 4 0



A large, stylized red drop cap letter 'P' with a white outline, positioned on the left side of the page. The letter is oriented vertically, with its top pointing towards the upper left and its base towards the lower left. The background of the page is white, and a thick blue diagonal stripe runs from the bottom left towards the top right.

PRESENTING . . . .

A DAY AT SOUTHWESTERN,  
A CROSS SECTION OF LIFE  
ON AND OFF THE CAMPUS,  
IMPARTIALLY PORTRAYING  
IN PICTURE AND STORY A  
TYPICAL DAY AT THE  
COLLEGE . . . . .









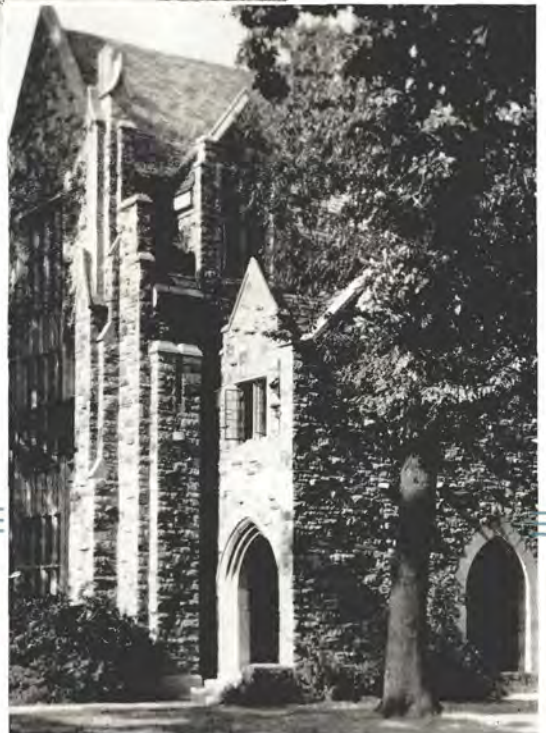
---

C H A R L E S   E .   D I E H L .





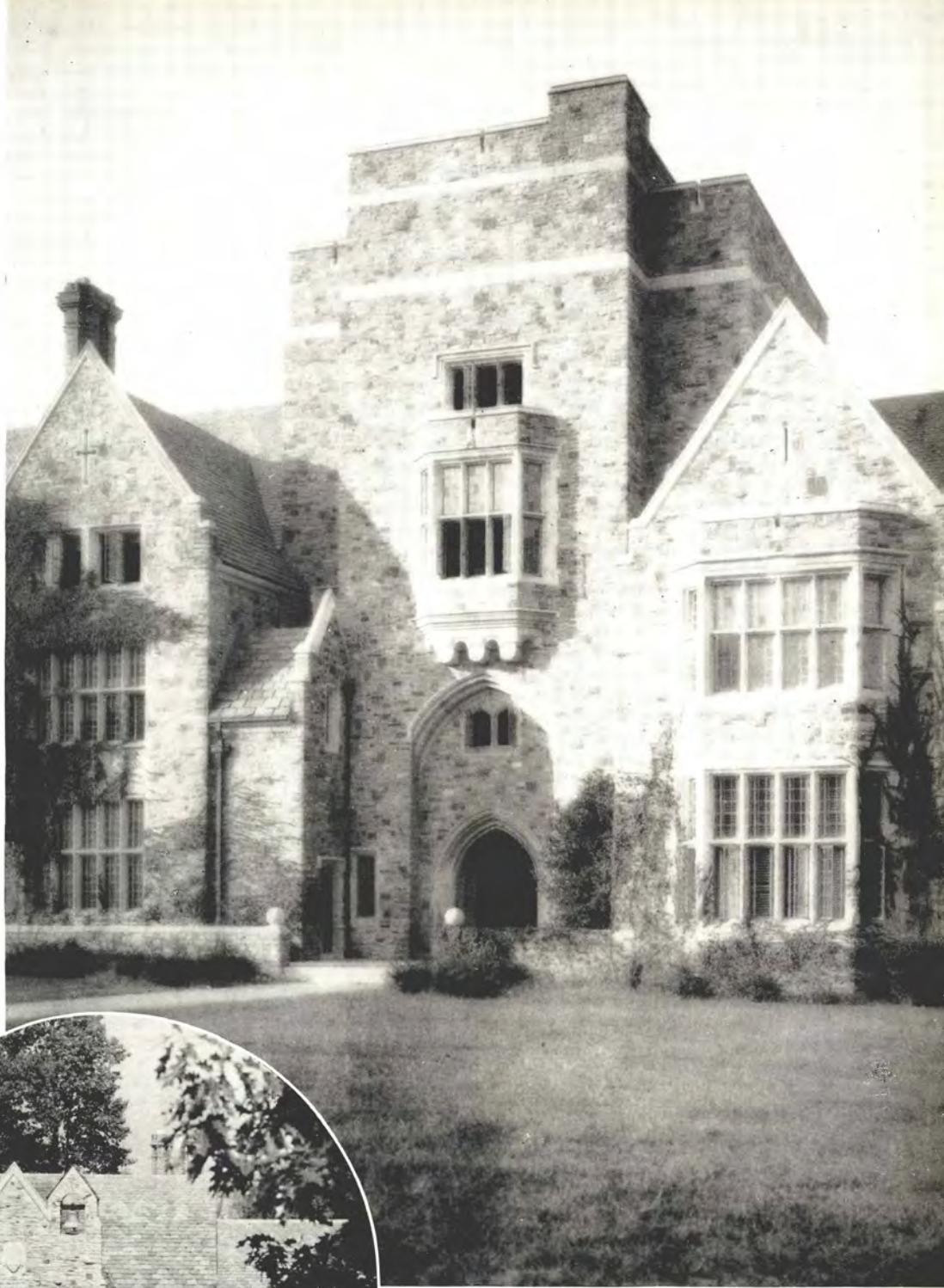
ASHNER GATEWAY  
ENTRANCE • NEELY HALL  
SCIENCE BUILDING



A. M., D. D., L. L. D., President



BELL ROOM • NEELY HALL

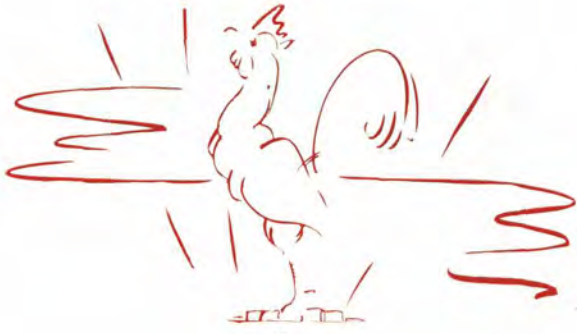


PALMER HALL



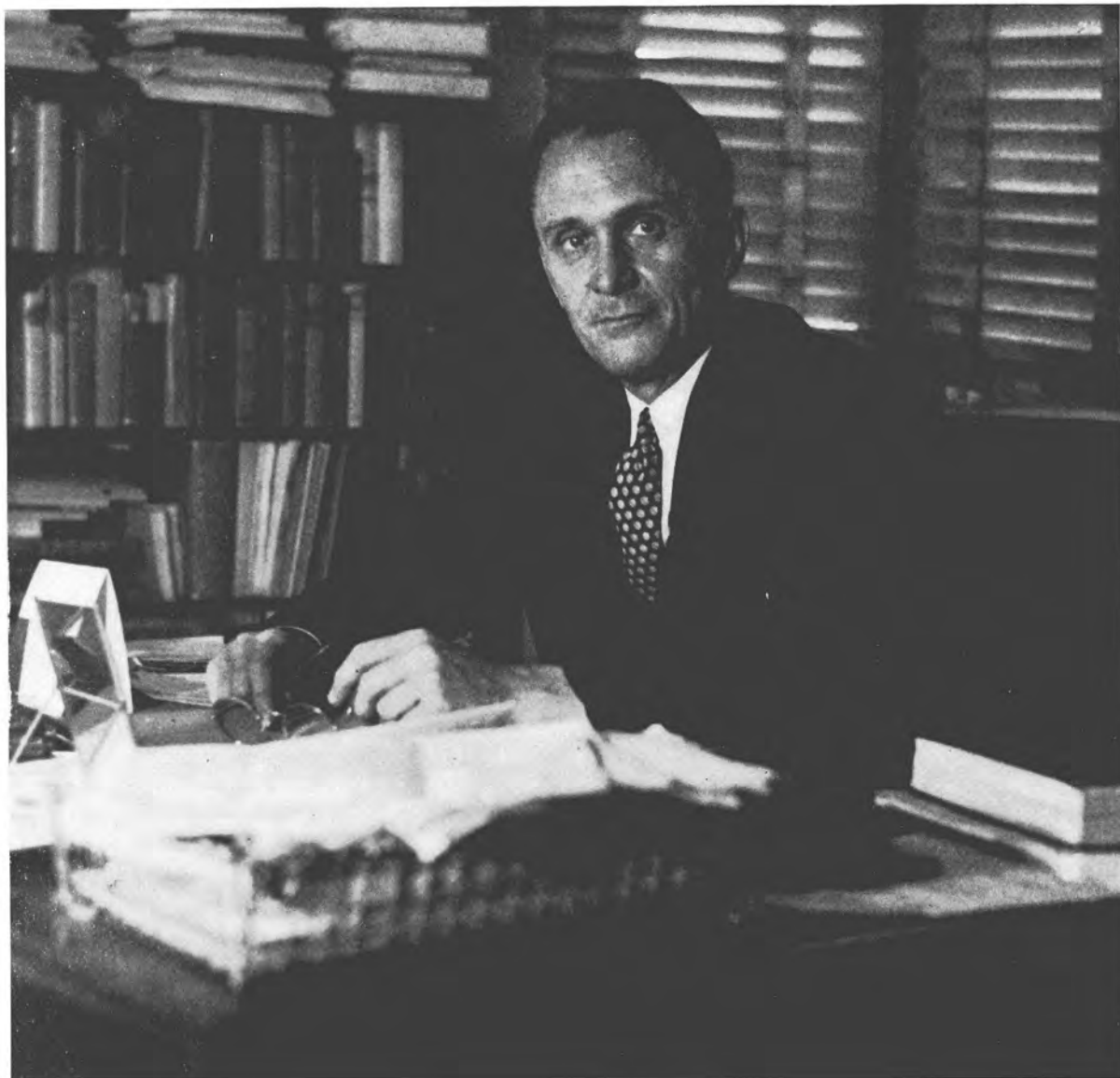
MORNING . . . .  
ALMA MATER • ADMINISTRATION • VIEWS • THE  
CLASSES • SOME ACTIVITIES and ORGANIZATIONS











A. THEODORE JOHNSON, A.M., PH.D.

A.B., Westminster College  
A.M., University of Virginia  
Ph.D., University of North Carolina

*Dean*



# THE DEANS



W. RAYMOND COOPER, A.M., LL.B.  
A.B., Washington and Lee University  
A.M., Harvard University  
LL.B., University of Alabama  
B.A. (Juris), Oxford University  
*Dean of Men*



ROBERT P. STRICKLER, PH.D.  
A.B., West Virginia University  
1907-1910, Oxford University  
Ph.D., Johns Hopkins University  
*Dean of Freshmen*



MARGARET HUXTABLE  
TOWNSEND, M.A.  
B.A. and M.A., McGill  
University  
*Dean of Women*



CHARLES LOUIS TOWNSEND

A.M., PH.D.

B.A., McGill University  
A.M. and Ph.D., Harvard  
University

*Professor of Modern  
Languages*



WILLIAM R. ATKINSON  
A.M., PH.D.

B.S., George Peabody College  
A.M., Columbia University  
Ph.D., George Peabody College

*Professor of Psychology  
and Education*





# T H E S E N I O R S

WILLIAM HENRY BELCHER  
A.B.

Memphis, Tennessee  
Sigma Alpha Epsilon;  
Episcopal Club, 1, 2, 3,  
President 4; Sou'wester  
Staff, 2, 4; Lynx Staff,  
3, 4; Choir, 3; Nitist Club,  
3, 4; Ministerial Club, 4;  
English Assistant, 3, 4;  
Candidate for Distinction  
in English.



BETTY BLUE  
A.B.  
Chi Omega  
Memphis, Tennessee

JAMES NEAL BRIEN, JR.  
B.S.

Memphis, Tennessee  
Kappa Alpha, Historian,  
4; German Club, 3; Band,  
3; Baptist Club, 4.



GROVER CLEVELAND  
BROADWATER  
B.S.  
Salem, West Virginia  
Kappa Alpha, Censor, 4;  
Band, 1, 2, 3; Candidate  
for Distinction in Biology.

DAN FERGUERSON  
CARRUTHERS  
B.S.

Memphis, Tennessee  
Sigma Alpha Epsilon,  
President, 4; Episcopal  
Club, Chaplain, 2; Chi  
Beta Phi, Secretary, 4;  
Honor Council, 3, 4; Elec-  
tions Commission, Presi-  
dent, 4; Vice-President of  
Senior Class; April Fool  
Carnival Court, 4; Omi-  
cron Delta Kappa, 4.



JOHN PROCTOR KNOTT  
CAVENDER  
A.B.  
Fulton, Kentucky  
Sigma Alpha Epsilon,  
Pledge President 1; Presi-  
dent of Freshman Class;  
Football 1, 2, 3, 4; Student  
Council 1, 3; President of  
Junior Class; Honor Coun-  
cil, 4; "S" Club, Vice-  
President, 4; Who's Who  
in American Colleges and  
Universities.

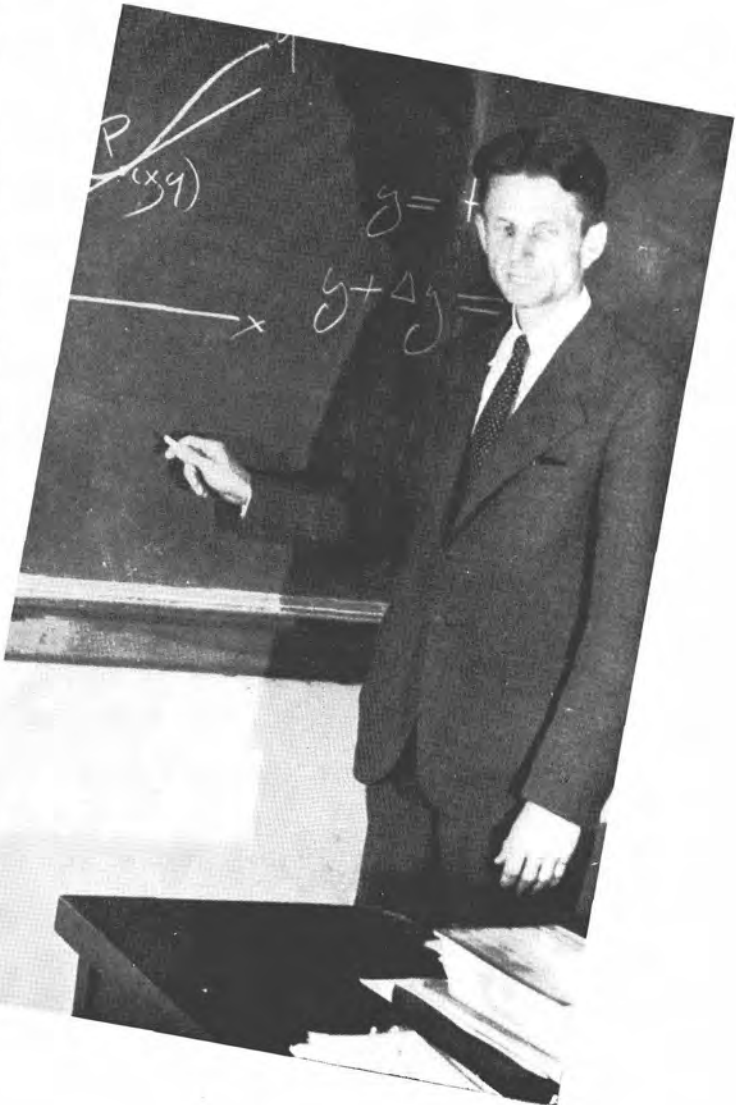


SAMUEL HOLT MONK

A.M., PH.D.

A.B., Southwestern  
A.M. and Ph.D.,  
Princeton University

*Professor of English*



MARION LEIGH  
MACQUEEN  
A.M., PH.D.

A.B., Southwestern  
A.M., University of  
Wisconsin  
Ph.D., University of  
Chicago

*Professor of  
Mathematics*



ALEXANDER WHITTEMORE  
CORTNER

A.B.

Avalon, Mississippi

Sigma Alpha Epsilon, Secretary, 4; Choir 1, 2, 3; Band 1, 2, 3, 4, President, 4; Intramural Fencing, 4; Candidate for honors in Political Science.



JOSEPHINE CORDELIA DANIELS  
A.B.

Memphis, Tennessee  
Chi Omega; Shakespeare Club, 2.

WILLIAM EMMANUEL  
DAVIDSON

A.B.

Memphis, Tennessee

Pi Kappa Alpha, President, 4; Episcopal Club 1, 2, 3, 4; Service Club, 2; Intramural Board, 2; Men's Panhellenic Council, 4; Elections Commission, 4.



ANNA ELIZABETH DAY  
A.B.

Memphis, Tennessee

Kappa Delta; Choir 1, 2, 3, 4, Secretary 3, 4; Spanish Club 1, 2, 3, 4; Y.W.C.A. 1, 2, 3, 4; Torch, 4; Basketball 1, 2, 3, 4.

WILLIAM CAMPBELL  
DONELSON

A.B.

Germantown, Tennessee

Sigma Alpha Epsilon, Treasurer 4; Freshman Football and Basketball Manager 1; Tied for second honors in class 1, 2, 3; Nitist Club 2, 3, 4; Sou'wester Staff 2, 3; Lynx Staff 3, Business Manager 4; Publications Board 3; Alpha Theta Phi 3, 4, Vice-President 4; Omicron Delta Kappa 4; Candidate for distinction in Economics.



ANN BOLLING ECKERT  
A.B.

Memphis, Tennessee

Chi Omega, House Manager 2; Secretary 3, Vice-President 4; Y.W.C.A. 1; Shakespeare Club 2, 3; Torch 4; Vice-President of Women's Undergraduate Society, 4; golf, volleyball, basketball 1, 2, 3, 4; tennis 1, 2, 3, 4; tennis tournament 1; Candidate for distinction in English.

ROBERT ALEXANDER ELDER  
B.S.

Memphis, Tennessee

Sigma Alpha Epsilon, Warden 3, Vice-President 4; Golf Team 1; Physics Assistant, 3, 4; Intramural Manager, 4; Publications Board, President, 4; Student Council, 4; Freshman Regulations Committee 4; Intramural Boxing Champion 2, 3, 4; Wrestling Champion, 3; Omicron Delta Kappa, 4; Candidate for distinction in Physics.

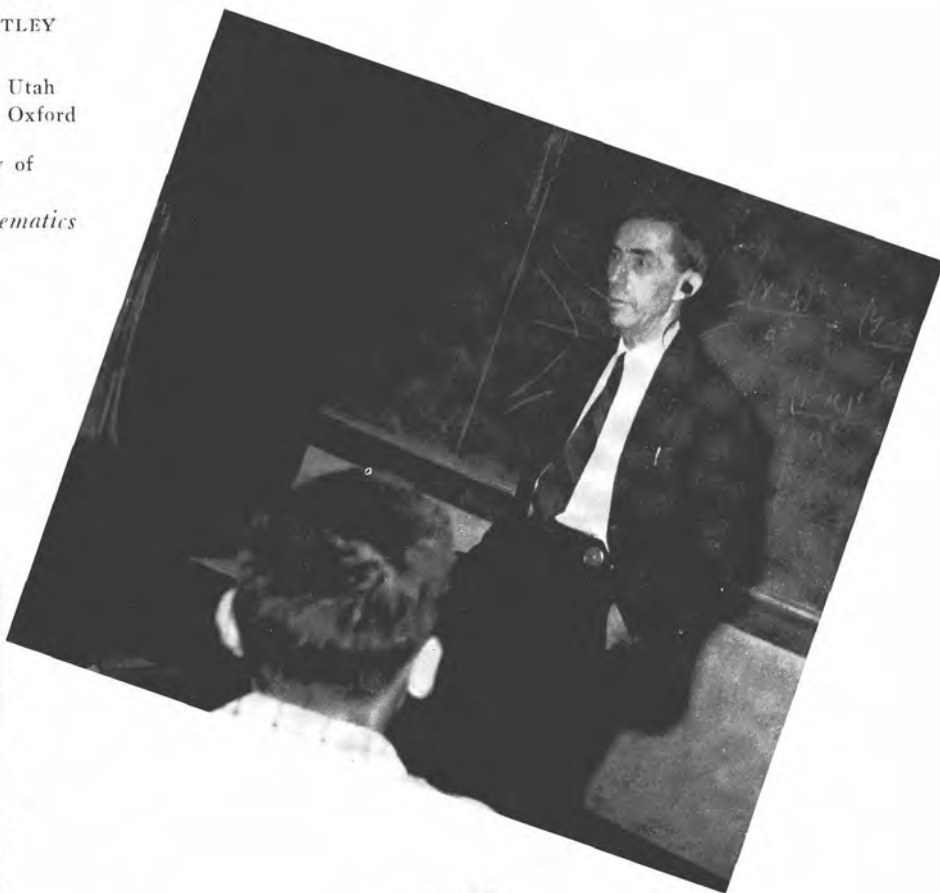


ROBERT W. HARTLEY  
PH.D.

A.B., University of Utah  
B.A. (Mathematics), Oxford  
University

Ph.D., University of  
Pennsylvania

*Professor of Mathematics*



WILLIAM ORPHEUS  
SHEWMAKER, PH.D., D.D.  
A.B., Centre College  
Graduate of Princeton  
Theological Seminary  
Ph.D., Hartford Theological  
Seminary  
*Professor of Bible*



KURT ELIAS

B.S.

New York, New York

Transfer; German Club 3, 4;  
Chi Beta Phi 4; Choir 3, 4.



WALTER FONTAINE HALL

A.B.

Memphis, Tennessee

Kappa Alpha, Censor 3, Re-  
cording Secretary 4; Minister-  
ial Club 1, 4; President 4;  
Christian Union Cabinet,  
President 4; Student Council  
4; Assistant Editor of Lynx 4.



WALTER JACKSON HEARN

A.B.

Uniontown, Alabama

Alpha Tau Omega, Usher 4;  
Freshman Basketball 1; All-  
Star Intramural Basketball  
and Volleyball Teams 4.



MARY LOUISE HUGHES

A.B.

Memphis, Tennessee

Chi Omega, Treasurer 3,  
President 4; Football Sponsor  
3; Christian Union Cabinet  
3, 4; Pi Intersorority 3, 4,  
Vice-President 4; Women's  
Panhellenic Council 4; Honor  
Council 4; Elections Commis-  
sion 4; Women's Undergrad-  
uate Society, Secretary-Treas-  
urer 4; Y.W.C.A. 1, 2, 3, 4.



HAROLD NAILL FALLS

A.B.

Earle, Arkansas

Alpha Tau Omega, President  
4; Student Service Club 1, 2;  
Intramural Boxing Champion  
1, 2; Track Team 2-4; "S"  
Club 2-4; Carnival Court 3;  
Student Council 3; Publica-  
tions Board, President 3;  
Men's Panhellenic Council 4;  
Election Commission, Vice-  
President 4.



DOROTHY SIEUWER HAMMOND

A.B.

Memphis, Tennessee

Zeta Tau Alpha, Historian 2,  
Secretary 3, President 4;  
Sou'wester Staff 1, 2, 3, 4;  
Society Editor 4; Episcopal  
Club 1, 2, 3, 4; Choir 1, 2, 3;  
Southwestern Players 1, 4;  
Queen of "S" Club Day 3;  
Blue Stockings 3; Stylus Club  
4; Football Sponsor 3; Lynx  
Staff 3, 4; S.T.A.B. Inter-  
sorority 3, 4, Secretary 4;  
Y.W.C.A. 1, 2, 3, 4; Girls'  
All-Star Basketball Team 3;  
Captain of Zeta Tau Alpha  
Basketball Team 2, 3, 4;  
Candidate for distinction in  
English.



GEORGIA CATHERINE

HOLLINGER

A.B.

Memphis, Tennessee

Alpha Omicron Pi, Treasurer  
3, 4; Archery Medal 1, 3;  
Sou'wester Staff 2, 3; Span-  
ish Club, Vice-President 4;  
Editorial Staff of the Lynx 4;  
Y.W.C.A. 1, 2, 3, 4.





ALEXANDER P. KELSO  
B.D., M.A., D.D.

A.B., Washington and  
Jefferson College  
B.D., Western Theological  
Seminary  
B.Sc. (Ethics), and M.A.  
(Theology), Oxford  
University

*Professor of Philosophy  
and Christian Ethics*



MARTIN W. STORN  
A.M., PH.D.

A.B., Martburg College  
A.M., University of  
Washington  
Ph.D., University of Illinois

*Professor of Romance  
Languages*





GEORGE DENNING JACKSON  
A.B.

Memphis, Tennessee

Kappa Sigma, Secretary 2, President 4; Christian Union Cabinet 1, 2, 3, 4, Vice-President 2, President 3; Belk Bible Medal, 1; Southwestern Players 1, 2; Ministerial Club 2, 3, 4; Tied for Second Honors in Class, 2; Sou'wester Staff, 2; News Editor 3; Debating 2; Southwestern Journal, Editor 3; Omicron Delta Kappa 3, President 4; Alpha Theta Phi, 3, Secretary-Treasurer 4; Student Council 3, 4; Sigma Upsilon 3; Nitist Club 3, 4; German Club 4; Most Popular Boy 4; Elections Commission 4; Carnival Court 4; Who's Who in American Colleges and Universities 4; Candidate for honors in Political Science; Editor, 1940 Lynx; Hall of Fame.



ELIZABETH CARRINGTON JONES  
A.B.

Memphis, Tennessee

Chi Omega; Y.W.C.A. 1, 2, 4.

STELLA FELICIA JONES  
A.B.

Memphis, Tennessee

Chi Omega, House Manager 3; Treasurer 4; Shakespeare Club, Secretary 2; Southwestern Players 1; Archery 3; Sou'wester Staff 2; Tied for Third Honors in class 2; Lynx Staff 3, 4; Torch 4; Choir 1, 2, 3, 4; Y.W.C.A. 1, 2, 3, 4; Candidate for distinction in English.



MARGARET MASON JONES  
A.B.

Memphis, Tennessee

Chi Omega, Best Pledge 1, Secretary 2, 4, Pledge Chairman 3; Sou'wester Staff 1, 2, 3; Lynx Staff 2, 4; Honor Council 3; Football Sponsor 3; "S" Club Queen 3; Y.W.C.A. 1, 2, 3; Basketball 1, 2, 3, 4.

JANE LEE LEDERER  
A.B.

Memphis, Tennessee

Chi Omega; Y.W.C.A. 1, 4; Choir 2, 4; Stylus Club 4; Candidate for distinction in English.



WILLIAM HARLIN MCBURNEY  
A.B.

Welsh, Louisiana

Kappa Alpha, Secretary 2, Vice-President 4; Band 1, 2; Sou'wester Staff 1, 2, 3, 4, Editor 3; Tied for Second Honors in class 1; First Honors in class 3; Author of April Fool Carnival Script 2; Sophomore Scholarship Cup 2; Lynx Staff 2; Student Council 3, 4; Men's Panhellenic Council 3, 4; Omicron Delta Kappa, Vice-President 4; Alpha Theta Phi, President 4; Stylus Club 2, 3, 4, President 4; Editor of Journal 4; German Club 4; Publications Board, Senior Representative 4; Who's Who in American Colleges and Universities.

VIRGIL HENRY McCRAVEY  
A.B.

San Antonio, Texas

Sigma Alpha Epsilon, Secretary 2, President 4; Basketball 1; Honor Council 2, 3, 4; Vice-President Men's Bible Class 3; Omicron Delta Kappa 3, 4; Christian Union Cabinet 3; Men's Panhellenic Council 3, 4, Vice-President 4; Intramural Manager 3; Student Council 4; Who's Who in American Colleges and Universities 4.



JOHN H. DAVIS, M.A., PH.D.  
A.B., University of Kentucky  
B.A. (Modern History) and M.A.,  
Oxford University  
Ph.D., University of Chicago  
*Professor of History*



PEYTON NALLE RHODES  
A.M., PH.D.  
A.B., A.M., and Ph.D., University  
of Virginia  
*Professor of Physics*





KATHERINE McCULLOCH  
A.B.

Memphis, Tennessee

Episcopal Club 1, 2, Secretary-Treasurer 2; Non-Sorority Basketball Team 1; Volleyball team 1, 2; Library Assistant 2, 3, 4; Shakespeare Club 2; A. A. U. W. Scholarship 3; Bluestockings, President 3; Stylus Club, Vice-President 4; Alpha Theta Phi 4; Torch 4; Candidate for distinction in English.



MARJORIE McELLYROY

A.B.

Memphis, Tennessee

Delta Delta Delta, Chaplain 3; Corresponding Secretary 4; Spanish Club, Treasurer 3; President 4; Co-ed edition of Sou'wester 3; Baptist Club 4; Y.W.C.A. 1, 2, 3, 4; Choir 1, 2, 3, 4; Basketball, volleyball, tennis, archery, riflery 1, 2, 3, 4.

JOHN ALLEN McGRADY  
A.B.

Macon, Georgia

Sigma Alpha Epsilon, Manager Freshman Football Team 1; Freshman Basketball and Track Letters 1; Honor Council 1, 2, 3, 4; Vice-President 3; Varsity Basketball Team 2, 3, 4; Intramural Manager 2, 3; Omicron Delta Kappa Sophomore Cup 2; Christian Union Cabinet 3, 4; Service Club 3, 4; Vice-President of Student Body 3; President, "S" Club 3, 4; Men's Panhellenic Council 4; Elections Commission 4; Tennis Team 3, 4; Who's Who in American Colleges and Universities 4; Omicron Delta Kappa 4; Carnival Court 3, 4; Hall of Fame.



JAMES JUDSON MCKELLAR

A.B.

Memphis, Tennessee

Sigma Alpha Epsilon; Intramural All-Stars 1, 2, 3, 4; Nitit Club 1; Episcopal Club 1; Carnival Cast 2; Economics Club 3; Ministerial Club 4; Sou'wester Staff 4; Lynx Staff 4; Intramural Board 4; Candidate for honors in Economics.

VIRGINIA HUNTINGTON MANGUM  
A.B.

Memphis, Tennessee

Alpha Omicron Pi, Vice-President 3; Sou'wester Staff 2; Women's Panhellenic Council 3; Episcopal Club 1, 2; Girls' All-Star Basketball Team 3; Captain A.O.Pi Basketball Team 3, 4.



JO SOMERVELL MEUX

A.B.

Brownsville, Tennessee

Alpha Omicron Pi, Vice-President 4; Football Sponsor 3, 4; Secretary-Treasurer Junior Class 3, Senior Class 4; Elections Commission, Secretary 4; Beauty Section of Lynx 3; Carnival Court 3, 4; President of Evergreen Hall 4; S.T.A.B. Intersorority 4; Who's Who in American Colleges and Universities 4; Queen of "S" Club Day 4.

EVERETT MOBLEY  
B.S.

Memphis, Tennessee

Kappa Alpha; Band 1, 2, 3; Choir 1, 2, 3; German Club 3; Chemistry Assistant 4.



TOM BRANTLEY MOBLEY

A.B.

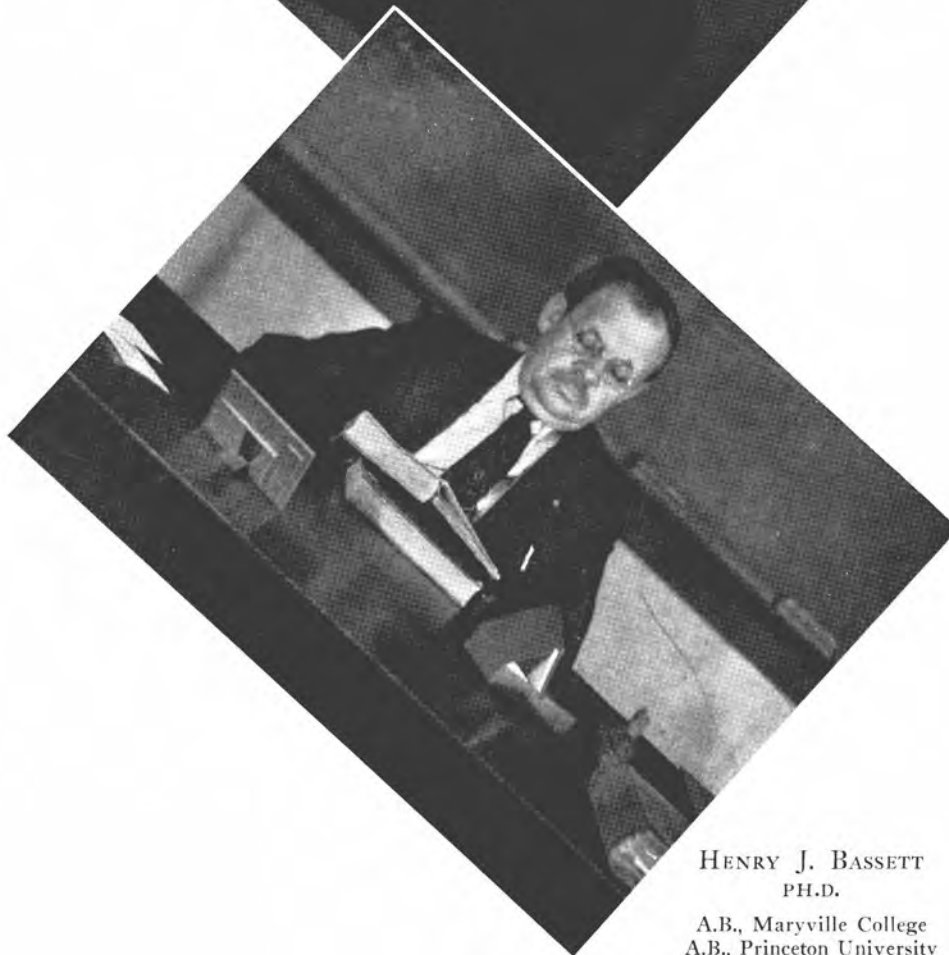
Kennett, Missouri

Alpha Tau Omega, President 3; Choir 1, 2; Band 1, 2, 3, 4, President 3; Southwestern Players 2, 3; Student Dance Committee 3; Carnival Court 3; Men's Panhellenic Council, President 4; Christian Union Cabinet 4; Men's Bible Class, Vice-President 4; Student Council 4.

ROBERT S. POND, A.M., PH.D.

A.B., Washburn College  
A.M., Marietta College  
Ph.D., University of Kansas

*Associate Professor  
of Mathematics*



HENRY J. BASSETT  
PH.D.

A.B., Maryville College  
A.B., Princeton University  
Ph.D., University of  
Michigan

*Professor of Latin*

CATHERINE LA VALLE MOORE  
A.B.

Memphis, Tennessee

Delta Delta Delta, President 4; Football Sponsor 4; Treasurer Women's Panhellenic Council 4; Episcopal Club 1; Archery 1; Y.W.C.A. 1, 2, 4.



JAMES HARRY MORRIS

A.B.

Gadsden, Alabama

Sigma Nu; Football 1, 2, 3, 4, Captain 4; Student Dance Committee 2, 3, 4; Secretary-Treasurer "S" Club 4; All-Dixie Team 4; On All-Opponent Teams of Clemson, University of Mississippi, Loyola 4.

RUTH ELIZABETH MULLINS

A.B.

Memphis, Tennessee

Kappa Delta; Choir 1, 2; Spanish Club 4.



WILLIAM BERRY NALL, JR.

A.B.

Memphis, Tennessee

Kappa Alpha.

BETTY ORGILL

A.B.

Memphis, Tennessee

Chi Omega; Football Sponsor 3; Lynx Staff 4; Golf 4; Y.W.C.A. 2, 3, 4; Episcopal Club 2, 3.



VONA LLOYD PARKER

A.B.

Memphis, Tennessee

Sigma Alpha Epsilon, Vice-President 4; Sou'wester Staff 2; Intramural Champion at Table Tennis 3.

CHARLES PERRY

A.B.

Pensacola, Florida

Kappa Sigma; Football 1, 2, 3, 4; Vice-President of Junior Class 3; Nitist Club 3; Student Dance Committee 3, 4; Freshman Regulation Committee 3, 4; President of Senior Class 4; "S" Club 2, 3, 4, President 4; Student Council 4; Carnival Court 4; Who's Who in American Colleges and Universities 4.



ANNE HENRY POTTS

A.B.

Memphis, Tennessee

Chi Omega; Girls' Tennis Champion 1, 2, 3; Beauty Section of Lynx 1, 2, 3; Spanish Club 2; Southwestern Players 2; Homecoming Queen 3; Carnival Court 3, 4; Y.W.C.A. 3; Blue-Stockings 3; Stylus Club 4; Football Sponsor 4; Chi Omega Basketball Team 1, 2, 3, 4; Volleyball Team 1, 2; Who's Who in American Colleges and Universities 4.





RALPH C. HON

A.M., PH.D.

A.B., University of Illinois

A.M., Harvard University

Ph.D., University of  
North Carolina

*Professor of Economics and  
Business Administration*



ARDREY S. MCLWAIN E

A.M., PH.D.

A.B., Southwestern

A.M. and Ph.D.,  
University of Chicago

*Associate Professor  
of English*

CATHERINE LA VALLE MOORE  
A.B.

Memphis, Tennessee

Delta Delta Delta, President 4; Football Sponsor 4; Treasurer Women's Panhellenic Council 4; Episcopal Club 1; Archery 1; Y.W.C.A. 1, 2, 4.



JAMES HARRY MORRIS

A.B.

Gadsden, Alabama

Sigma Nu; Football 1, 2, 3, 4, Captain 4; Student Dance Committee 2, 3, 4; Secretary-Treasurer "S" Club 4; All-Dixie Team 4; On All-Opponent Teams of Clemson, University of Mississippi, Loyola 4.



RUTH ELIZABETH MULLINS

A.B.

Memphis, Tennessee

Kappa Delta; Choir 1, 2; Spanish Club 4.



WILLIAM BERRY NALL, JR.

A.B.

Memphis, Tennessee

Kappa Alpha.



BETTY ORGILL

A.B.

Memphis, Tennessee

Chi Omega; Football Sponsor 3; Lynx Staff 4; Golf 4; Y.W.C.A. 2, 3, 4; Episcopal Club 2, 3.



VONA LLOYD PARKER

A.B.

Memphis, Tennessee

Sigma Alpha Epsilon, Vice-President 4; Sou'wester Staff 2; Intramural Champion at Table Tennis 3.



CHARLES PERRY

A.B.

Pensacola, Florida

Kappa Sigma; Football 1, 2, 3, 4; Vice-President of Junior Class 3; Nitist Club 3; Student Dance Committee 3, 4; Freshman Regulation Committee 3, 4; President of Senior Class 4; "S" Club 2, 3, 4, President 4; Student Council 4; Carnival Court 4; Who's Who in American Colleges and Universities 4.



ANNE HENRY POTTS

A.B.

Memphis, Tennessee

Chi Omega; Girls' Tennis Champion 1, 2, 3; Beauty Section of Lynx 1, 2, 3; Spanish Club 2; Southwestern Players 2; Homecoming Queen 3; Carnival Court 3, 4; Y.W.C.A. 3; Blue-Stockings 3; Stylus Club 4; Football Sponsor 4; Chi Omega Basketball Team 1, 2, 3, 4; Volleyball Team 1, 2; Who's Who in American Colleges and Universities 4.





RALPH C. HON  
A.M., PH.D.  
A.B., University of Illinois  
A.M., Harvard University  
Ph.D., University of  
North Carolina  
*Professor of Economics and  
Business Administration*



ARDREY S. McILWAIN  
A.M., PH.D.  
A.B., Southwestern  
A.M. and Ph.D.,  
University of Chicago  
*Associate Professor  
of English*



VIRGINIA ANN RAGSDALE  
A.B.  
Memphis, Tennessee  
Delta Delta Delta, Secretary  
4; Football Sponsor 4; Elec-  
tions Commission 4; Y.W.C.  
A. 1, 2, 3, 4; Archery, bas-  
ketball 1.



JOHNSON BRYAN RHEM  
A.B.  
Memphis, Tennessee  
Kappa Sigma, President 4;  
Intramural Board 2, 3; In-  
tramural Manager 4; Epis-  
copal Club 2, Vice-President  
4; Sou'wester Staff 2, 3;  
Lynx Staff 3; Nitist Club 2;  
Men's Panhellenic Council 4;  
Intramural Director 4.

DAVID WILLIAM SCHULHERR  
A.B.  
St. Louis, Missouri  
Ministerial Club 2; Band 2,  
3, 4; Tied for third honors  
in Class 3.



PRISCILLA MACON SHUMAKER  
A.B.  
Memphis, Tennessee  
Kappa Delta; Choir 1, 2, 3,  
4; Basketball 1, 2, 3, 4; Vice-  
President Women's Athletic  
Association 4; President of  
Torch 4; S.T.A.B. Intersor-  
ority 4; Women's Panhellenic  
Council 2, 3; Elections Com-  
mission 4; Christian Union  
Cabinet 4; Y.W.C.A. 1, 2, 3,  
4; Treasurer 4; Football Spon-  
sor 4; Candidate for dis-  
tinction in Mathematics.

THOMAS WILLIAM SIMPSON  
B.S.  
Chi Beta Phi 2, 3, President  
4; Omicron Delta Kappa 4;  
Lynx, Assistant Editor 4;  
Biology Laboratory Assistant  
2, 3, 4; Tied for Third Hon-  
ors in Class, 3; Candidate  
for Honors in Biology.



ROBERT LEONARD SMITH  
B.S.  
Memphis, Tennessee  
Pi Kappa Alpha; Chi Beta  
Phi 2, 4; Band 1, 2, 3; Choir  
3; Track 1, 4.

THEODORE HERBERT SMITH, JR.  
A.B.  
Memphis, Tennessee  
Sigma Nu, Chaplain 2; Vice-  
President 3, President 4; In-  
tramural Board 3; Student  
Director of Intramural Ath-  
letics 4; Men's Panhellenic  
Council 4; Candidate for dis-  
tinction in History.



JOHN SUMMERFIELD  
A.B.  
Memphis, Tennessee  
Debating Team 1, 2, 3, 4;  
Freshman Tennis Team, 1;  
Lynx Radio Players, 3; Stu-  
dent Director, 4; Tau Kappa  
Alpha, President, 4.



CLINTON L. BAKER  
M.S., PH.D.  
B.S. and M.S., Emory University  
Ph.D., Columbia University  
*Associate Professor of Biology*



GORDON SIEFKIN  
B.A.  
A.B., University of Iowa;  
B.A., Oxford University  
*Associate Professor of  
Political Science*

ANNE TUTHILL

A.B.

Memphis, Tennessee

Chi Omega, Social Service  
Chairman 3, 4; Sou'wester  
Staff, Music Editor, 2, 3, 4;  
Choir 2, 3, 4, President 4;  
Torch 4; Candidate for  
honors in Music.



KATHERINE VIRGINIA  
WAGGENER

A.B.

Memphis, Tennessee

Transfer from Gulf Park  
College; Alpha Omicron Pi,  
Secretary of Pledges 2, Cor-  
responding Secretary 3, Pres-  
ident 4; Sou'wester Staff 2;  
Y.W.C.A. 2, 3, 4, Secretary  
4; Secretary-Treasurer of  
Student Body 4; Women's  
Panhellenic Council, Vice-  
President 4; Christian Union  
Cabinet 4; Student Council  
4; "Miss Southwestern" 4;  
Carnival Court 4.

ETHEL CANTRILL WETHERBEE

A.B.

Greenville, Mississippi

Chi Omega; Transfer from  
Sophie Newcomb College;  
S.T.A.B. 3, 4, President 4.



WILL RHEA WINFREY

A.B.

Somerville, Tennessee

"S" Club 2, 3, 4; Track Team  
2, 3, Captain 2; Elected  
Most Valuable Track Man  
2; Football 1, 2, 3, 4, Alter-  
nate Captain 4.

NANCY ANN WOOD

A.B.

Memphis, Tennessee

Alpha Omicron Pi, Corre-  
sponding Secretary 2, Record-  
ing Secretary 4; Choir 1;  
Y.W.C.A. 1, 2, 3, 4; Cabinet  
2; Lynx Staff 4.



JOHN LANGDON WOOLSEY

B.S.

Galesburg, Illinois

Southwestern Players 1, 2, 3,  
4; Choir 1, 2, 3, 4, Vice-Pres-  
ident 3; Chi Beta Phi 2, 3, 4,  
Vice-President 3; Service  
Club 3, 4, Vice-President 4;  
Who's Who in American  
Colleges and Universities 4;  
Candidate for honors in  
Chemistry.

ANNIE FEW WORK

B.S.

Memphis, Tennessee

Transfer from Mills College;  
Chi Omega; Choir 2, 3; Cam-  
era Club 2; Lynx Staff 2;  
Football Sponsor 3; Blue-  
stockings 3; Stylus Club 4;  
Y.W.C.A. 2, 3, 4, Vice-Pres-  
ident 4; Christian Union  
Cabinet 4; Student Council  
4; Co-Ed edition of the  
"Sou'wester" 4; Southwestern  
Players 4; Women's Under-  
graduate Society, President 4;  
Candidate for distinction in  
Biology; Hall of Fame.



WILLIAM WARING  
WORTHINGTON

A.B.

Memphis, Tennessee

Sigma Nu, Treasurer 3, Pres-  
ident 4; Choir 1, 2; Band  
1, 2; Freshman Basketball  
and Track Teams 1; Fresh-  
man Football Manager 1;  
Sou'wester 1, 2; Southwest-  
ern Players 1, 2; Service Club  
1, 2, 3, 4, President 4; "Best  
Athlete" Intramural Board  
Award 2; 175 Lb. Intramural  
Wrestling Champion 3; Men's  
Panhellenic Council 4; Elec-  
tions Commission 4; Cheer-  
leader 4; Student Council 4.





C  
A  
N  
D  
I  
D  
V  
I  
E  
W  
S



O N T H E C A M P U S





FELIX B. GEAR  
TH.M., PH.D., D.D.

A.B., Davis and Elkins College  
D.D., Union Theological Seminary  
Th.M., Princeton Theological Seminary  
Ph.D., University of Edinburgh

*Professor of Bible  
The Albert Bruce Curry Chair*



JACOB R. MEADOW,  
A.M., PH.D.

A.B., Arkansas College  
A.M., University of Arkansas  
Ph.D., Johns Hopkins University  
*Professor of Chemistry*



# JUNIO RS

MAXINE ELIZABETH ALLEN  
Memphis, Tennessee

RALPH ALPERIN  
Memphis, Tennessee

EVELYN NELSON BELCHER  
Kappa Delta  
Memphis, Tennessee

WALTER GORTON BERRY  
Sigma Alpha Epsilon  
Memphis, Tennessee

GEORGE BLAKEMORE  
Kappa Sigma  
Memphis, Tennessee

HAYS BRANTLEY, JR.  
Sigma Nu  
Memphis, Tennessee

NELL SHARMAN BREWER  
Kappa Delta  
Lecompte, Louisiana

CLAUDE WILBURN BROWN  
Sigma Alpha Epsilon  
Clarendon, Arkansas

CHESTER McDONALD CAMPBELL, JR.  
Birmingham, Ala.

BLAND WILSON CANNON  
Alpha Tau Omega  
Brownsville, Tennessee

CAROLYN CARROLL  
Chi Omega  
Memphis, Tennessee

EARL PRICHARD DAVIS  
Kappa Sigma  
Memphis, Tennessee

MARION HUGHES DICKSON  
Delta Delta Delta  
Memphis, Tennessee

MARY ELIZABETH DOUGLASS  
Alpha Omicron Pi  
Memphis, Tennessee

FRANK ADDAMS ENGLAND  
Kappa Sigma  
Greenville, Mississippi





J. HENRY DAVIS  
A.M., PH.D.  
B.S. and A.M., Davidson College  
Ph.D., University of Chicago  
*Professor of Biology*



OGDEN BAINE  
M.S., PH.D.  
B.S., Southwestern  
M.S. and Ph.D.,  
New York University  
*Associate Professor  
of Chemistry*

MARY JEAN FLYNN  
Alpha Omicron Pi  
Memphis, Tennessee

KATHLEEN MARY FRANSIOLI  
Delta Delta Delta  
Memphis, Tennessee

CHARLES BARNEY GALLAGER  
Sigma Nu  
Memphis, Tennessee

BENJAMIN FRANK HAMMET  
Kappa Sigma  
Memphis, Tennessee

MARY ELIZABETH HARSH  
Chi Omega  
Memphis, Tennessee

VIRGINIA HENINGTON  
Zeta Tau Alpha  
Memphis, Tennessee

VIRGINIA ANN HEPPEL  
Alpha Omicron Pi  
Memphis, Tennessee

ELVIN ELIZABETH HOLDER  
Chi Omega  
Memphis, Tennessee

HARRIETTE COX HOLLIS  
Chi Omega  
Memphis, Tennessee

J. CLAUDE HULL, JR.  
Sigma Nu  
Bucyrus, Ohio

LOUISE JENNINGS  
Alpha Omicron Pi  
Memphis, Tennessee

BOYCE JOHNSON  
Sigma Nu  
Memphis, Tennessee

HAROLD EDESEL JONES  
Kappa Sigma  
Batesville, Arkansas

JOHN HOSKINS KIER  
Kappa Sigma  
Lexington, Mississippi

RUTH HELENE LEE  
Kappa Delta  
Memphis, Tennessee

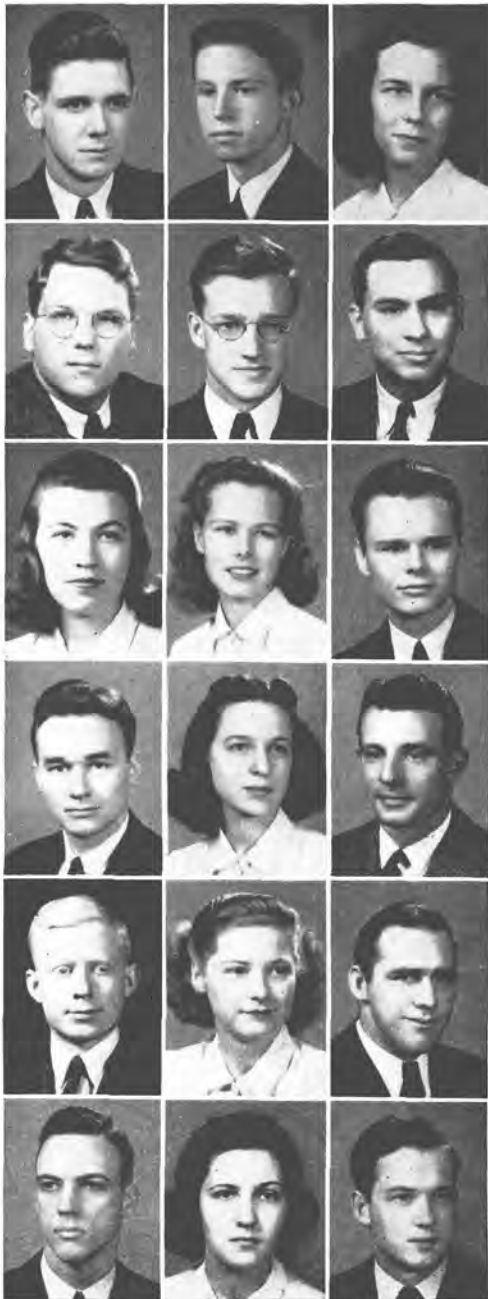
BERNARD LEE LOCKRIDGE  
Kappa Sigma  
Albertville, Alabama

CAMPBELL GARTH LONG  
Humboldt, Tennessee

EDWARD CASSELLBERRY MARTIN, JR.  
Sigma Nu  
Memphis, Tennessee







THOMAS ROTHROCK MILLER  
Sigma Alpha Epsilon  
Memphis, Tennessee

WILLIAM GEORGE MILLER  
Pi Kappa Alpha  
Memphis Tennessee

RUTH EBERHART MITCHELL  
Chi Omega  
Memphis, Tennessee

RICHARD CHARLTON MOORE  
Kappa Alpha  
Memphis, Tennessee

WILLIAM MARTIN MOORHEAD  
Alpha Tau Omega  
Little Rock, Arkansas

WILLIAM BUCKNER MORGAN  
Kappa Sigma  
Memphis, Tennessee

MARTHA HESTER MOSBY  
Alpha Omicron Pi  
Memphis, Tennessee

MARGARET MOYER  
Kappa Delta  
Memphis, Tennessee

WILLIAM PATRICK MURPHY  
Kappa Sigma  
Memphis, Tennessee

WILLIAM FITZHUGH MURRAH, JR.  
Kappa Alpha  
Memphis, Tennessee

MILDRED WILSON NOCE  
Alpha Omicron Pi  
Memphis, Tennessee

IRVING ORENSTEIN  
Atlanta, Georgia

CHARLES WILBUR ORTO  
Kappa Sigma  
Pine Bluff, Arkansas

MARIE ALBERTA PALMER  
Zeta Tau Alpha  
Memphis, Tennessee

GEORGE BAXTER PONCEY  
Kappa Sigma  
Grady, Arkansas

HARRY BARR PREST, JR.  
Sigma Alpha Epsilon  
Memphis, Tennessee

HELEN GRAY QUINICHET  
Kappa Delta  
Germantown, Tennessee

ROBERT WALLACE QUINDLEY  
Sigma Alpha Epsilon  
Memphis, Tennessee

CATHERINE STEWART RAMSEY  
Chi Omega  
Memphis, Tennessee

HALCON CURTIS ROBERTSON  
Alpha Tau Omega  
Mobile, Alabama

BARBARA JANE ROBINSON  
Zeta Tau Alpha  
Memphis, Tennessee

JAC COVINGTON RUFFIN  
Kappa Alpha  
Memphis, Tennessee

ELIZABETH HELEN SCARBOROUGH  
Delta Delta Delta  
Memphis, Tennessee

CAMPBELL KING SHARP  
Memphis, Tennessee

ROBERT BONAR SIEDENTOPF  
Kappa Alpha  
Memphis, Tennessee

MARTHA LOUISE SMALL  
Kappa Delta  
Salem, Illinois

ELISE FARNSWORTH SMITHWICK  
Chi Omega  
Memphis, Tennessee

DOROTHY AIMEE STACY  
Delta Delta Delta  
Memphis, Tennessee

CARY ADAIR TATE  
Chi Omega  
Memphis, Tennessee

DIANA TEMPLE WALLACE  
Chi Omega  
Memphis, Tennessee

JEAN STARETT WALTON  
Kappa Delta  
Memphis, Tennessee

DEOLA WHITE  
Kappa Delta  
Franklin, Kentucky

ARABIA FRANCES WOOTEN  
Alpha Omicron Pi  
Whitehaven, Tennessee

JOHN WILLIAM YOUNG, JR.  
Kappa Sigma  
Jackson, Mississippi



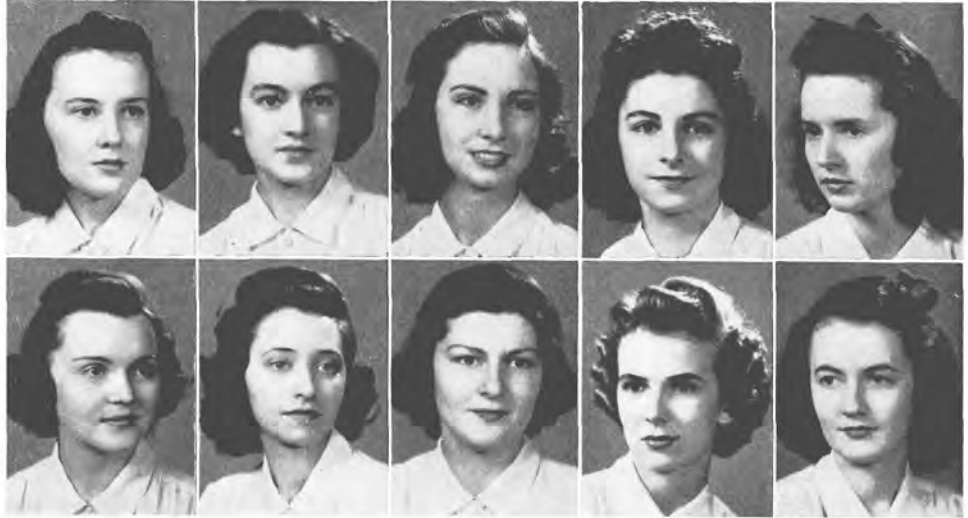


# S T A B

President  
ETHEL WETHERBEE

Vice-President  
DOROTHY TURNER

Secretary-Treasurer  
DOROTHY HAMMOND



Carolyn Carroll  
Marian Dickson  
Joye Fourmy  
Jo Gilfillan  
Milton Mathewes

Jo Meux  
Annabell Paine  
Priscilla Shumaker  
Kitty Bright Tipton  
Dorothy Waller

S. T. A. B. is a society which strives to promote friendly relations between sororities. It was founded in 1899, at Randolph Macon Woman's College. Its membership is limited to twelve brunets and one blonde. Each Friday these members appear on the campus in red and white.



# PI



LOUISE JENNINGS.....High Pi  
MARY LOUISE HUGHES.....Low Pi  
MARY WARE.....Secretary-Treasurer

Mildred Noce  
Jeanne Reeves  
Constance Rosamond  
Jean Walton  
Betty Jean Claffey  
Bennie Joyner  
Ann Worten  
Cecilia Hill

Roberta Wellford  
Jean Flynn  
Reama DeVall  
Dale Botto  
Margaret Polk  
Minna Potts  
Louise Howry

Pi, a national intersorority organization, was founded at Randolph-Macon in 1901 and is designed to promote friendly relations among the various sororities on the campus. Social functions are given from time to time and on one day a week the members wear green and white, the colors of the group.





CLARENCE P. LEE  
A.M.

A.B. and A.M., Washington  
and Lee University  
B.A., Oxford University  
*Assistant Professor of  
English and Public  
Speaking*



BURNET C. TUTHILL  
A.M., M.MUS.

A.B. and A.M., Columbia University  
M.Mus., College of Music of Cincinnati  
*Director of Music*

# S O P H O M O R E S

JANE CHILTON ADAMS  
Zeta Tau Alpha  
Memphis, Tennessee



FRANCES LAWRENCE AKERS  
Kappa Delta  
Memphis, Tennessee

JAMES WARD ANDREW  
Kappa Sigma  
Princeton, Indiana

LANCE LEON ANDREWS  
Pi Kappa Alpha  
Memphis, Tennessee



NORA OWEN ARMSTRONG  
Chi Omega  
Memphis, Tennessee

STROTHER MOORE ASQUITH  
Kappa Alpha  
Memphis, Tennessee

WALTER LOUIS BADER  
New Orleans, Louisiana



GEREM MCLEMORE BAIRD  
Sigma Alpha Epsilon  
Memphis, Tennessee

B. W. BEAUMONT  
Kappa Sigma  
Memphis, Tennessee

ROBERT OVERTON BLACK  
Kappa Alpha  
Memphis, Tennessee



LOUISE HAZELTINE BLUE  
Chi Omega  
Memphis, Tennessee

NORMA ELIZABETH BRIGHT  
Delta Delta Delta  
Memphis, Tennessee

WILLIAM HUGH  
BUCKINGHAM  
Sigma Nu  
Memphis, Tennessee



WILLIAM BAILEY CAMPBELL  
Sigma Alpha Epsilon  
Memphis, Tennessee

MARGARET JEANNE CARLOSS  
Delta Delta Delta  
Memphis, Tennessee





W. ROSS  
JUNKIN,  
A.M.  
B.A., University of  
Toronto  
A.M., Cornell  
University  
*Associate Profes-  
sor of Economics  
and Business  
Administration*



DAVID M. AMACKER, M.A.  
A.B., Princeton University  
B.A. and M.A., Oxford University  
*Professor of Political Science*



BLANCHE WILHELMINA  
CAVETT  
Chi Omega  
Memphis, Tennessee



BETTY JEANNE CLAFFEY  
Chi Omega  
Memphis, Tennessee

JAMES ARTHUR COGSWELL  
Memphis, Tennessee

ROBERT EUGENE COGSWELL  
Memphis, Tennessee



JOHN C. CONN  
Sigma Nu  
Lancaster, Kentucky

BARBARA ANNE DEAN  
Chi Omega  
Memphis, Tennessee

REAMA LECROY DEVALL  
Delta Delta Delta  
Memphis, Tennessee



JOHN VAN LEAR DOWNIE  
Kappa Alpha  
Little Rock, Arkansas

THOMAS COX DUNCAN  
Aliceville, Alabama

CARY ELIZABETH ECKERT  
Chi Omega  
Memphis, Tennessee



DOROTHY ESCH  
Kappa Delta  
Memphis, Tennessee

JOHN CULTON FLANIKEN  
Kappa Alpha  
Memphis, Tennessee

JOYE FOURMY  
Alpha Omicron Pi  
Memphis, Tennessee



LAURA FRANCES FULMER  
Kappa Delta  
Memphis, Tennessee

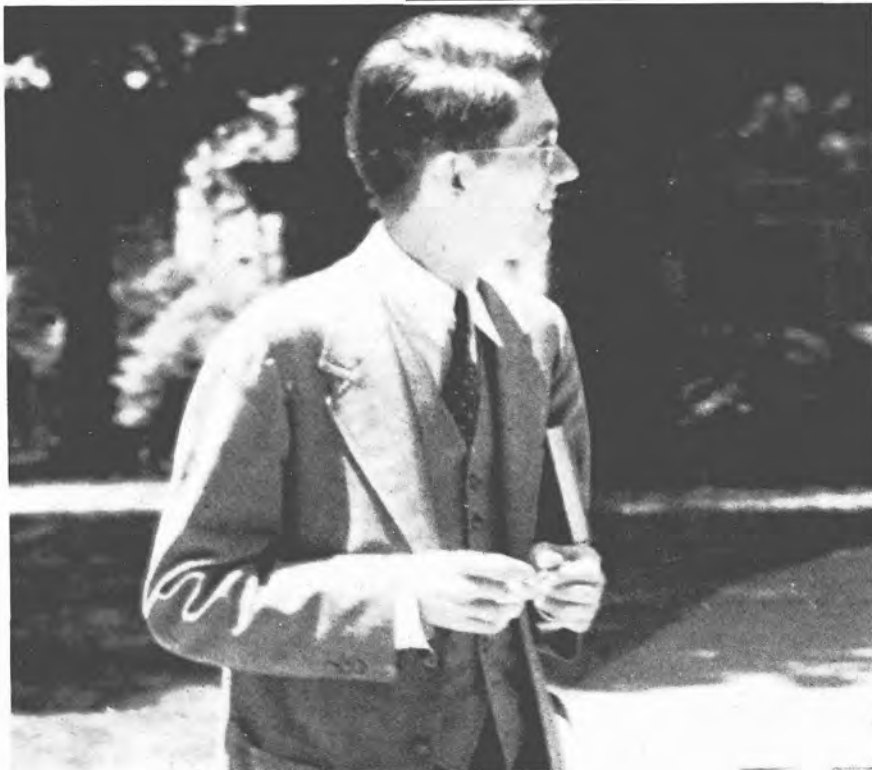
CLIFFORD GAITHER  
Kappa Alpha  
Memphis, Tennessee

JOHN WILLIAM GIBSON  
Sigma Alpha Epsilon  
Memphis, Tennessee



LILLIAN JOSEPHINE GILFILLAN  
Alpha Omicron Pi  
Memphis, Tennessee

KATHERINE REGINA GOLDBERGER  
Memphis, Tennessee



JOHN Q. WOLF, JR.  
A.M.

A.B., Arkansas College  
A.M., Vanderbilt  
University

*Assistant Professor  
of English*

M. EDWARD PORTER  
A.M., PH.D.

A.B., Washington and  
Lee University  
A.M. and Ph.D.,  
Princeton University

*Assistant Professor of  
Modern Languages*

CHARLES ADAM GUTHRIE  
Galesburg, Illinois



DOROTHY JUANITA HANNA  
Zeta Tau Alpha  
Raleigh, Tennessee

PAULA HARRIS  
Kappa Delta  
Memphis, Tennessee

EDWARD CHARLES  
HERMANN  
Alpha Tau Omega  
Webster Groves, Missouri



HARRY HILL, JR.  
Kappa Alpha  
Mt. Pleasant, Tennessee

WILLIAM DANIEL HOLEMAN  
Alpha Tau Omega  
Oakville, Tennessee

JEANETTE LASLEY  
HOLLENBERG  
Chi Omega  
Memphis, Tennessee



CURTIS BROWN HURLEY, JR.  
Alpha Tau Omega  
Morrilton, Arkansas

JOHN ILES  
Pi Kappa Alpha  
Baton Rouge, Louisiana

BENNIE CORINNE JOYNER  
Zeta Tau Alpha  
Memphis, Tennessee



WILLIAM McCUE KENNEDY  
Kappa Sigma  
Port Gibson, Mississippi

JUSTINE LORAYNE KLYCE  
Kappa Delta  
Raleigh, Tennessee

CHARLES EDWARD LONG  
Alpha Tau Omega  
Braggadocia, Missouri



HENRY FURR LYNCH  
Alpha Tau Omega  
Marks, Mississippi

LAURA MCGEHEE  
Kappa Delta  
Paris, Tennessee

WILLIAM ROBERT MAYBRY  
Kappa Alpha  
Memphis, Tennessee



ROBERT COLEGROVE MEACHAM  
Birmingham, Alabama

MARTHA POSTON MILLER  
Delta Delta Delta  
Memphis, Tennessee



MAURICE ETHELDRED  
MILLER, JR.  
Sigma Alpha Epsilon  
Memphis, Tennessee



EDWARD MILLER NESBITT, JR.  
Sigma Nu  
Memphis, Tennessee

JAMES ROWLAND NEW  
Kappa Sigma  
Memphis, Tennessee

ANNABELLE HUGHES  
PAINE  
Chi Omega  
Memphis, Tennessee



KATE LIGHTBURNE PARKER  
Zeta Tau Alpha  
Memphis, Tennessee

IRIS ANNETTE PEARCE  
Zeta Tau Alpha  
Memphis, Tennessee

MARGARET RAGSDALE  
Delta Delta Delta  
Memphis, Tennessee



CHARLES EVERETT REED  
Alpha Tau Omega  
Memphis, Tennessee

KATHERINE JEANNE REEVES  
Delta Delta Delta

ROBERT RICHARD RHODES  
Sigma Nu  
Carruthersville, Missouri



MARGARET WARDLAW SANDERS  
Delta Delta Delta  
Memphis, Tennessee

WALKER PATTERSON SANDLIN, JR.  
Alpha Tau Omega  
Germantown, Tennessee

ELDER LECOMIS SHEARON  
Kappa Sigma  
Memphis, Tennessee



ROWLETT WILSON SNEED  
Kappa Alpha  
Whitehaven, Tennessee

SARAH MARIE SPARACINO  
Zeta Tau Alpha  
Benoit, Mississippi

ROBERT CHARLES STITES  
Bloomington, Illinois



CELESTE ELIZABETH TAYLOR  
Delta Delta Delta  
Memphis, Tennessee

KITTY BRIGHT TIPTON  
Chi Omega  
Memphis, Tennessee

HELEN DOROTHY TURNER  
Memphis, Tennessee



KATHERINE NELSON  
WALKER  
Chi Omega  
Memphis, Tennessee

WESLEY WALKER, JR.  
Kappa Sigma  
Webb, Mississippi

BERYL VINCENT WALLER  
Alpha Tau Omega  
Bolivar, Tennessee



DOROTHY LEE WALLER  
Alpha Omicron Pi  
Memphis, Tennessee

MARY G. V. WARE  
Chi Omega  
Memphis, Tennessee

KATE STEPHENSON  
WEAVER  
Delta Delta Delta  
Memphis, Tennessee



ALLEN TILLMAN WEBB  
Kappa Sigma  
Memphis, Tennessee

DANIEL EDWARDS WEST  
Kappa Sigma  
Memphis, Tennessee

RUSSEL LEE WIENER  
Kappa Sigma  
Memphis, Tennessee



NENA McCrARY WILLIAMS  
Zeta Tau Alpha  
Little Rock, Arkansas

JEAN GRAY WILLIAMSON  
Chi Omega  
Memphis, Tennessee

DONALD CUSHMAN  
WOOLSEY  
Galesburg, Illinois



DOROTHEA JULIA WYATT  
Alpha Omicron Pi  
Memphis, Tennessee









ROBERT T. L.  
LISTON  
TH.M., PH.D.  
A.B., Davidson College  
B.D. and Th.M.,  
Union Theological  
Seminary (Virginia)  
Ph.D., University of  
Edinburgh  
*Associate Professor  
of Bible*



WOLFGANG  
PAULSEN  
PH.D.  
Student at Tuebingen,  
Bonn, Berlin, and  
Leipzig  
Ph.D., University of  
Berne  
*Assistant Professor  
of Modern  
Languages*

# F R E S H M E N

ALEC LEE ALBERTINE  
Kappa Alpha  
Memphis, Tennessee

DAVID WELLS ALDERMAN, JR.  
Florence, South Carolina

RICHARD HENRY ALLEN, JR.  
Sigma Alpha Epsilon  
Memphis, Tennessee

ELEANOR CATHERINE AM.S  
Kappa Delta  
Dyersburg, Tennessee

WILLIAM McNEIL AYRES  
Sigma Alpha Epsilon  
Memphis, Tennessee

LESTER MARCHANT BAGGETT  
Sigma Alpha Epsilon  
Memphis, Tennessee

JOE WILLIS BERRYMAN  
Sigma Nu  
Memphis, Tennessee

JOHN WILKS BOOTH, JR.  
Kappa Alpha  
Memphis, Tennessee

JUNE RAYMOND BOSTICK  
Delta Delta Delta  
Memphis, Tennessee

MARTHA DALE BOTTO  
Delta Delta Delta  
Memphis, Tennessee



CLAY ROBERTS ALEXANDER  
Kappa Sigma  
Jackson, Mississippi

HARRY WINFIELD ARNOLD  
Kappa Alpha  
Memphis, Tennessee

ROBERT HOMER  
BEASLEY, Jr.  
Kappa Sigma  
Tuscumbia, Alabama

ELEANOR COWAN BOOTH  
Somerville, Tennessee

MADELEINE STELLA  
BRABANT  
Lez-Lille Nord, France



ARNO SCHIROKAUER,  
PH.D.

Attended Universities of  
Berlin and Halle  
Ph D., University of Munich  
*Visiting Lecturer in  
Medieval Studies*



W. CLYDE DUNN, A.B.  
A.B., University of North  
Carolina  
*Assistant Professor of  
Political Science and  
Economics*

JAMES EDWARD BUCHANAN, JR.  
Sigma Nu  
Memphis, Tennessee

PAUL W. BUGG  
Somerset, Kentucky

DOMONIC ANTHONY CANALE  
Kappa Alpha  
Memphis, Tennessee

GEORGE BATTLE CASE  
Alpha Tau Omega  
Tarrytown, New York

ANNELE CATO  
Zeta Tau Alpha  
Union Church, Mississippi

CLIFF PORTER COCHRAN  
Sigma Nu  
Memphis, Tennessee

JAMES DABNEY COLLIER  
Sigma Alpha Epsilon  
Memphis, Tennessee

JAMES HERVEY CONWAY  
Memphis, Tennessee

JOHN COSS DARBY  
Kappa Sigma  
Memphis, Tennessee

TANNER HENRY CARTER DAVIS  
Kappa Sigma  
Memphis, Tennessee

MARY CHRISTINA EATON  
Kappa Delta  
Memphis, Tennessee

CHARLES SARGENT EDWARDS  
Sigma Nu  
Hamden, Connecticut



NELL BUSBY  
Chi Omega  
Pace, Mississippi



FRANCES GARROTT CASH  
Chi Omega  
Memphis, Tennessee



MARIE COFFEY  
Petersburg, Tennessee



HENRY CRAFT, III  
Sigma Alpha Epsilon  
Proctor, Arkansas



JULIUS RAY DOBBINS  
Allison, Arkansas



JAMES WESLEY EDWARDS  
Raleigh, Tennessee



EDWIN KUBALE,  
A.B.  
A.B., Centre College  
*Director of  
Athletics and  
Coach*



HAROLD W. HIGH,  
A.B.  
A.B., Southwestern  
*Assistant Director  
of Athletics  
and Business  
Manager*

WILLIS LEE ENSIGN  
Selma, Alabama

ELISABETH FAUNTLEROY  
Chi Omega  
Memphis, Tennessee

RUTH FLEMING  
Delta Delta Delta  
Collierville, Tennessee

ARTHUR HERBERT FRIEDMAN  
Memphis, Tennessee

VANCE McCLELLAND GILMER  
Alpha Tau Omega  
Citronelle, Alabama

ANN FORREST GODBOLD  
Memphis, Tennessee

ROBERT EDWARD GOOSTREE  
Sigma Nu  
Clarksville, Tennessee

LLOYD JAMES GORDON  
Kappa Alpha  
Memphis, Tennessee

CECILIA ADALINE HILL  
Alpha Omicron Pi  
Memphis, Tennessee

ALLEN HEARIN HILZHEIM  
Kappa Sigma  
Memphis, Tennessee

MALCOLM VINCENT HINSON  
Kappa Alpha  
Memphis, Tennessee

WARNER HODGES, JR.  
Pi Kappa Alpha  
Memphis, Tennessee



SAMUEL HUSTON FISHER  
Kappa Alpha  
Talladega, Alabama

CORNELIA ANN GARROTT  
Chi Omega  
Sledge, Mississippi

BOYD COOPER GOODWIN  
Kappa Sigma  
Hot Springs, Arkansas

JAMES CLAUDE HAVERTY  
Sigma Alpha Epsilon  
Memphis, Tennessee

ELIZABETH HINCKLEY  
Alpha Omicron Pi  
Memphis, Tennessee

LOUISE HOWRY  
Delta Delta Delta  
Memphis, Tennessee



ROBERT B. WADDLE,  
A.B.  
A.B., Centre College  
*Assistant Coach*



MUREK NEMECEK  
A.B.  
A.B., Centre College  
*Director of Physical  
Education for Men*

MARY HARRIET HUNTER  
Delta Delta Delta  
Memphis, Tennessee

MARY LOUISE INGRAM  
Chi Omega  
Memphis, Tennessee

EMMETT EDWARD KELLY  
Sigma Nu  
Tupelo, Mississippi

DAVID JERE KLYCE  
Kappa Alpha  
Memphis, Tennessee

VIRGINIA MARY KNOWLTON  
Alpha Omicron Pi  
Memphis, Tennessee

CHEVES KILGORE LIGON  
Kappa Sigma  
Columbia, Tennessee

GEORGANE LITTLE  
Zeta Tau Alpha  
Memphis, Tennessee

RUTH ELEANOR LOGSDON  
Memphis, Tennessee

ROBERT FRANKLIN McCRARY  
Kappa Sigma  
Hot Springs, Arkansas

BEVERLY MCFALL  
Chi Omega  
Memphis, Tennessee

CLYDE NORWOOD MALONE  
Kappa Sigma  
Augusta, Arkansas

MILTON FORD MATHEWES  
Chi Omega  
Memphis, Tennessee



MARIE JACKSON  
Delta Delta Delta  
Memphis, Tennessee



LAWRENCE MAXWELL  
KNOPP  
Memphis, Tennessee



JEAN BEVERLY LIKLEY  
Kappa Delta  
Memphis, Tennessee



MARY RACHEL McADAMS  
Kappa Delta  
Memphis, Tennessee



JAMES CLEMENT  
McNEES, JR.  
Kappa Sigma  
McComb, Mississippi



KATHERINE MILLER  
Alpha Omicron Pi  
Memphis, Tennessee



LOUISE STRATMANN,  
A.B.  
A.B., Southwestern  
*Director of Physical  
Education for Women*

C. L. SPRINGFIELD  
*Bursar*





GLADYS CLAIRE MOORE  
Alpha Omicron Pi  
Memphis, Tennessee

WILLIAM BRYAN MUNDAY  
Pi Kappa Alpha  
Memphis, Tennessee

JULIAN CLARK NALL  
Sigma Alpha Epsilon  
Memphis, Tennessee

MARY CLARA NEW  
Alpha Omicron Pi  
Memphis, Tennessee

MARGARET POLK  
Alpha Omicron Pi  
Memphis, Tennessee

WILLIAM LEROY POPE  
Kappa Sigma  
McComb, Mississippi

MARTHA VIRGINIA PRATER  
Kappa Delta  
Waynesboro, Tennessee

WINIFRED WADDELL PRITCHETT  
Chi Omega  
Memphis, Tennessee

LYNE STARLING REID  
Sigma Alpha Epsilon  
Greenville, Mississippi

EUGENE CHILDRESS REYNOLDS  
Kappa Sigma  
Memphis, Tennessee

HENRY LEWIS ROCKWELL  
Sigma Alpha Epsilon  
Hartford, Connecticut

CLAUDE ROMINE, JR.  
Kappa Sigma  
Arcola, Mississippi

CAROLINE BARNES  
MURPHY  
Kappa Delta  
San Antonio, Texas

JANE GIFT PEETE  
Memphis, Tennessee

MINNA TREADWELL POTTS  
Chi Omega  
Memphis, Tennessee

ERNEST LINWOOD REID  
Kappa Sigma  
Orange, Texas

JOSEPHINE WAUCHOPE  
RHEA  
Somerville, Tennessee

CONSTANCE ROSAMOND  
Chi Omega  
Memphis, Tennessee



DAVID ALEX RUFFIN  
Kappa Alpha  
Covington, Tennessee

IRL RYCE RUSSUM  
Pi Kappa Alpha  
Memphis, Tennessee

ANN SCOTT  
Alpha Omicron Pi  
Memphis, Tennessee

ROBERT HENRY SEABROOK  
Kappa Sigma  
Memphis, Tennessee

MARY ANN SIMONTON  
Alpha Omicron Pi  
Covington, Tennessee

MARION LILES SLUSSER  
Kappa Sigma  
Memphis, Tennessee

CALVIN HORTON SMITH  
Kappa Sigma  
Tuscumbia, Alabama

MARY VIRGINIA SMITH  
Zeta Tau Alpha  
Memphis, Tennessee

WILLIAM SPANGLER  
Pi Kappa Alpha  
Memphis, Tennessee

JAMES HUBERT SPARKS  
Kappa Sigma  
Tuscumbia, Alabama

ROLAND HENDERSON STOVALL  
Sigma Nu  
Memphis, Tennessee

WILMER CLARK SURBER, JR.  
Alpha Tau Omega  
Elizabethton, Tennessee



JAY TUNKIE SAUNDERS  
Sigma Alpha Epsilon  
Memphis, Tennessee



RUFUS WILLIAM SHIVERS  
Kappa Alpha  
Memphis, Tennessee



FRED WILLIAM SMALL, JR.  
Sigma Alpha Epsilon  
Salem, Illinois



DOROTHY ISABELLE SOUTH  
Memphis, Tennessee



SARA LOUISE STANFORD  
Delta Delta Delta  
Memphis, Tennessee



JAMES WILLIAM  
TANKERSLEY  
Kappa Alpha  
Memphis, Tennessee

FORD TURNER  
Kappa Alpha  
Memphis, Tennessee

EUGENE ANTHONY VACCARO, JR.  
Kappa Sigma  
Memphis, Tennessee

JACK WADLINGTON  
Memphis, Tennessee

MARY ELEANOR WALKER  
Kappa Delta  
Grand Rapids, Michigan

EDWARD WEBB  
Pi Kappa Alpha  
Memphis, Tennessee

LEWIS DONELSON WELLFORD  
Sigma Alpha Epsilon  
New Orleans, Louisiana

MERCER E. WEST, III  
Kappa Sigma  
Memphis, Tennessee

LUCY SHEPHERD WHITE  
Chi Omega  
Memphis, Tennessee

WAITER EWING WILGUS  
Kappa Alpha  
Memphis, Tennessee

ETHEL BELAINE WILLIAMS  
Memphis, Tennessee

WILLIAM ARTHUR WOOTEN  
Sigma Alpha Epsilon  
Memphis, Tennessee

ANN WORTEN  
Delta Delta Delta  
Memphis, Tennessee

LEE NORWOOD VAUGHT, JR.  
Alpha Tau Omega  
Harvey, Louisiana

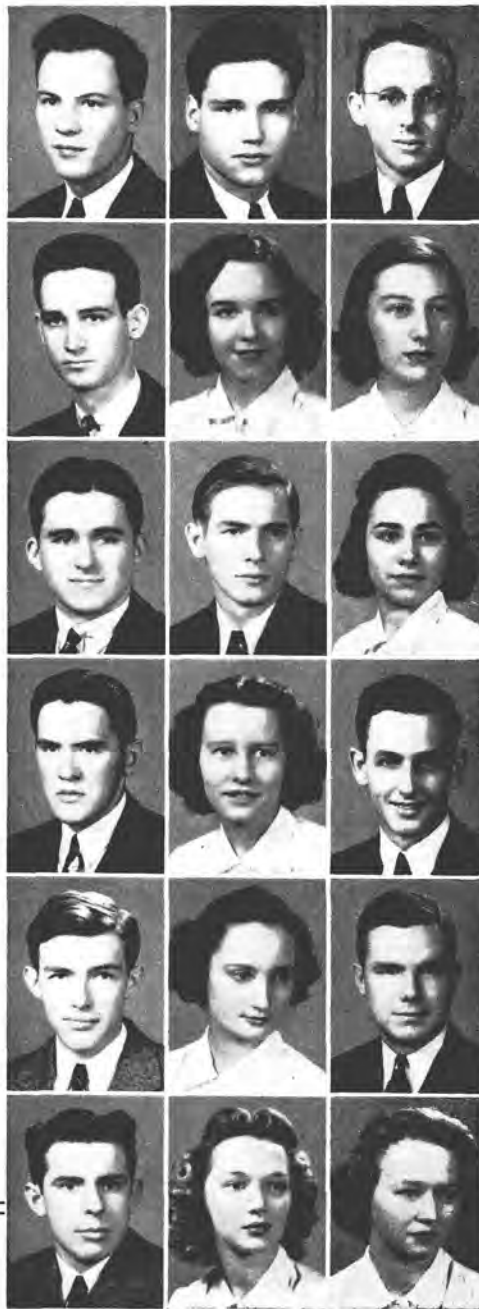
BOYCE WARR  
Delta Delta Delta  
Memphis, Tennessee

ROBERTA PROTHRO  
WELLFORD  
Chi Omega  
Memphis, Tennessee

JOHN CHILDRESS WHITSITT  
Sigma Alpha Epsilon  
Memphis, Tennessee

WILLIAM SOUTHALL  
WILLS, JR.  
Sigma Alpha Epsilon  
Memphis, Tennessee

NELL ELIZABETH WRIGHT  
Alpha Omicron Pi  
Covington, Tennessee



S O U T H W E S T E R N   A T   M E M P H I S

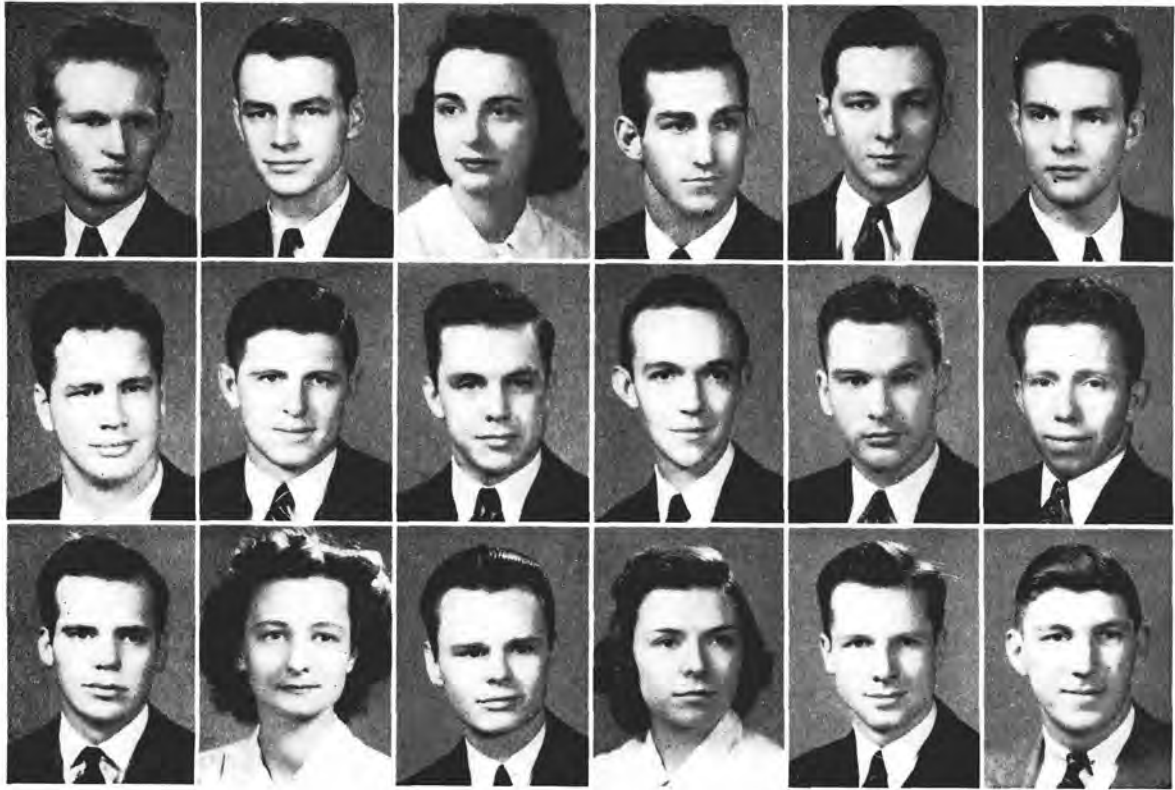
AFTERNOON . . .  
VIEWS • ACTIVITIES OR-  
GANIZATIONS • SORORI-  
TIES AND ATHLETICS . . .







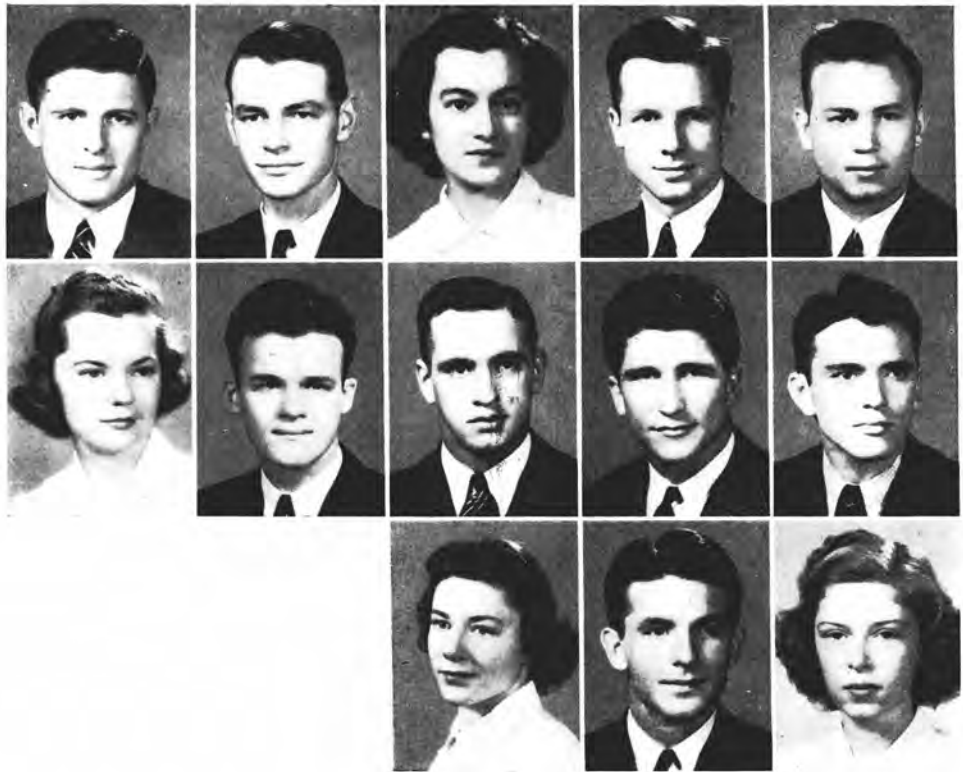
# STUDENT COUNCIL



## MEMBERS OF THE STUDENT COUNCIL

JOHN McGRADY.....	President of the Student Body
FRANK ENGLAND.....	Vice-President of the Student Body
VIRGINIA WAGGENER.....	Secretary-Treasurer of the Student Body
CHARLES PERRY.....	President of the Senior Class
JOHN YOUNG.....	President of the Junior Class
ROBERT BLACK.....	President of the Sophomore Class
EMMETT KELLY.....	President of the Freshman Class
BERNARD LOCKRIDGE.....	President of the Honor Council
GEORGE JACKSON.....	President of Omicron Delta Kappa, Editor of the Lynx
WILLIAM McBURNEY.....	President of Alpha Theta Phi
ROBERT ELDER.....	President of the Publications Board
WALTER HALL.....	President of the Christian Union Cabinet
TOM MOBLEY.....	President of the Men's Pan Hellenic Council
JEAN WALTON.....	President of the Women's Pan Hellenic Council
WILLIAM MURPHY.....	Editor of the Sou'wester
ANNIE FEW WORK.....	President of the Women's Undergraduate Society
DAN CARRUTHERS.....	President of the Elections Commission
WILLIAM WORTHINGTON.....	President of the Student Service Club

The Student Council is the official and representative organization of the students at Southwestern. It outlines and presents matters for the consideration of the student body, directs relations between student organizations, cooperates actively with the administration, and acts as a clearing house between the students and faculty.

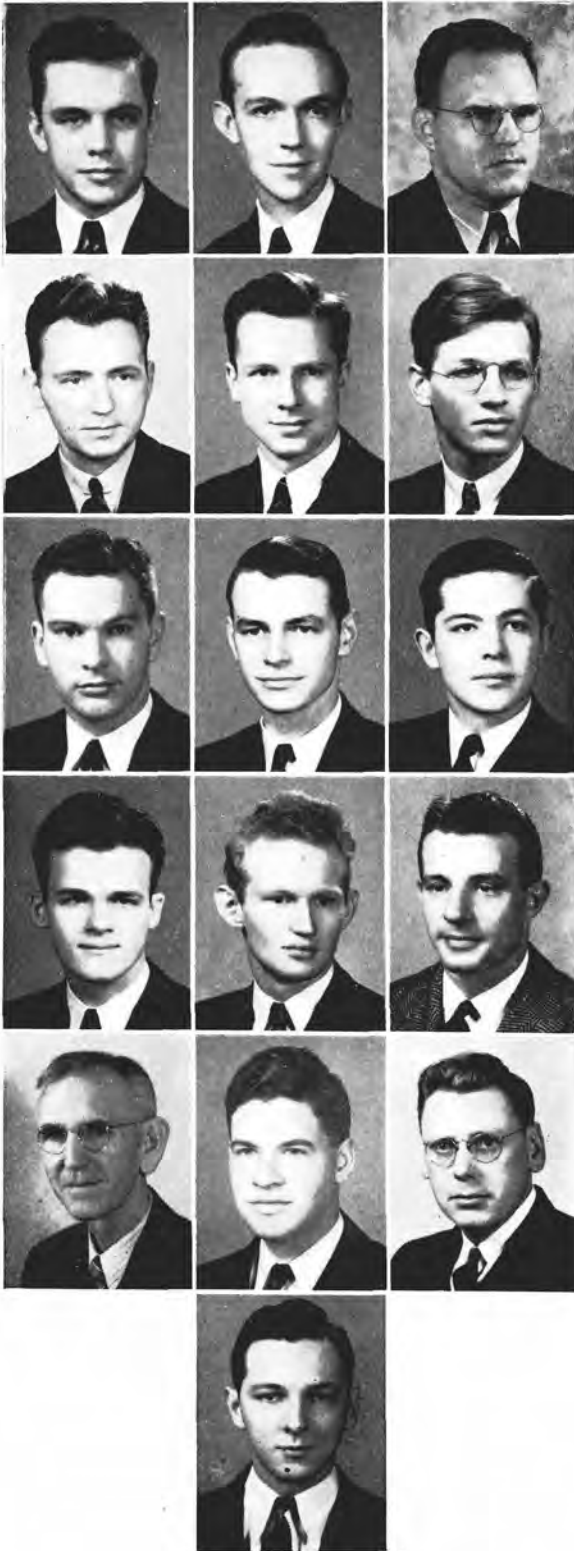


# HONOR COUNCIL

BERNARD LOCKRIDGE, Junior.....President  
 FRANK ENGLAND, Junior.....Vice-President  
 MARION DICKSON, Junior.....Secretary

DAN CARRUTHERS.....Senior  
 J. P. CAVENDER.....Senior  
 MARY LOUISE HUGHES.....Senior  
 VIRGIL McCRANEY.....Senior  
 HAROLD JONES.....Junior  
 JAMES ANDREW.....Sophomore  
 ROBERT MEACHAM.....Sophomore  
 KATE WEAVER.....Sophomore  
 ROBERT BEASLEY.....Freshman  
 MARY HUNTER.....Freshman

The Honor Council is composed of thirteen representatives elected annually by the classes. Its purpose is to maintain the Honor System on the campus. It is vested with full authority to act as a disciplinary body in cases of violation of the system.



# OMICRON DELTA KAPPA

President  
GEORGE JACKSON

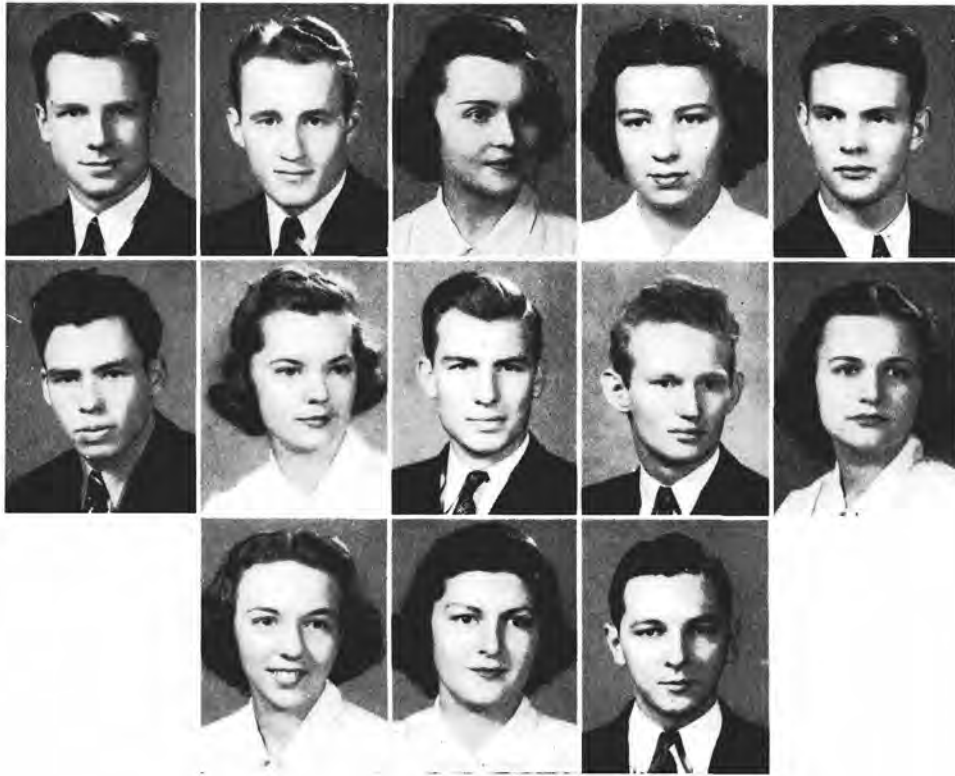
Vice-President  
WILLIAM MCBURNEY

Secretary-Treasurer  
PROF. RALPH C. HON

Prof. Ogden Baine  
Dan Carruthers  
William Donelson  
Robert Elder  
Frank England  
John Kier  
Coach Edwin Kubale  
(Not pictured)  
Virgil McCraney  
John McGrady  
Irving Orenstein  
Prof. R. S. Pond  
Thomas Simpson  
Prof. C. G. Siefkin  
John Young

Phi Circle of Omicron Delta Kappa  
National Honorary Leadership Fraternity  
Established at Southwestern in 1927

Its purpose is to recognize leadership in college activities, to bring together representative men from the student body and faculty, and to best serve the interests of the college and the student body.



# ELECTIONS COMMISSION

DAN CARRUTHERS, Sigma  
Alpha Epsilon.....President

HAROLD FALLS, Alpha Tau  
Omega ..... Vice-President

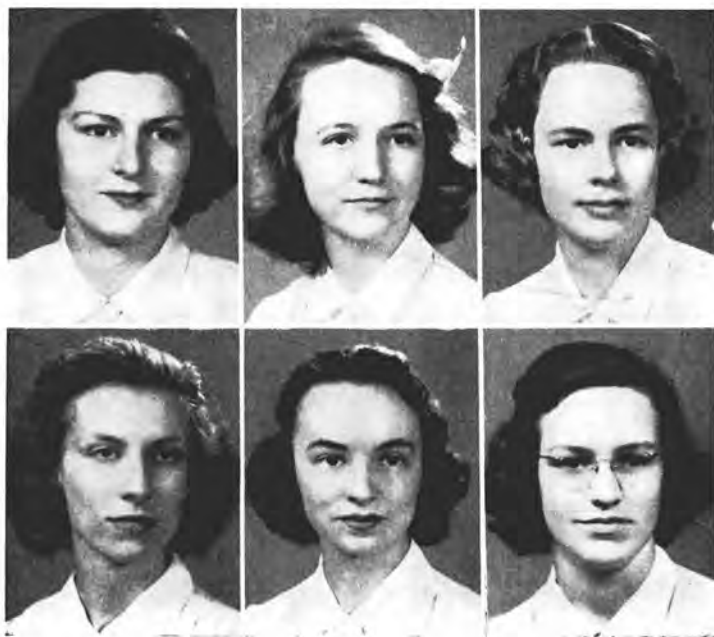
JO MEUX, Alpha Omicron Pi.....Secretary

Maxine Allen, Non-Sorority  
Robert Black, Kappa Alpha  
William Davidson, Pi Kappa Alpha  
George Edwards, Non-Fraternity,  
(not pictured)  
Mary Louise Hughes, Chi Omega

Boyce Johnson, Sigma Nu  
John McGrady, ex-officio  
Kate Parker, Zeta Tau Alpha  
Virginia Ragsdale, Delta Delta Delta  
Priscilla Shumaker, Kappa Delta  
John Young, Kappa Sigma

The Elections Commission is composed of one representative from each fraternity and sorority, and from the non-fraternity and non-sorority groups. Its purpose is to insure fair student elections, and it attempts to see that each student casts a free, unrestricted ballot in every student election. The commission also attempts to discover and to penalize any individual or organization which tries, through a political combine, or by other unfair means, to restrict this right.

# T O R C H



PRISCILLA SHUMAKER.....President  
ANN ECKERT.....Vice-President  
ANNE TUTHILL.....Treasurer

Elizabeth Day  
Stella Felicia Jones  
Katherine McCulloch

Torch Society, the senior women's honorary organization, was organized at Southwestern in 1937. Its purpose is to recognize women students who have obtained a high standard of scholarship or leadership in campus activities. Invitation to membership in this group of representative campus women is extended on the basis of character, scholarship, and activity points, from those in the upper twenty-five per cent of the junior class.



# ALPHA THETA PHI



WILLIAM MCBURNEY.....President  
 WILLIAM DONELSON .....Vice-President  
 GEORGE D. JACKSON.....  
 .....Secretary-Treasurer

Jac Ruffin  
 John Kier  
 Robert Price (not pictured)  
 Amelia Plesofsky (not pictured)  
 Mildred Noce  
 Katherine McCulloch

Alpha Theta Phi is a scholastic fraternity of both men and women, composed only of those students that have completed at least two and one half years of college work, maintaining an exceptionally high scholastic average. Its object is to recognize such students and to emphasize scholarship in the thoughts of other students. It is petitioning Phi Beta Kappa.

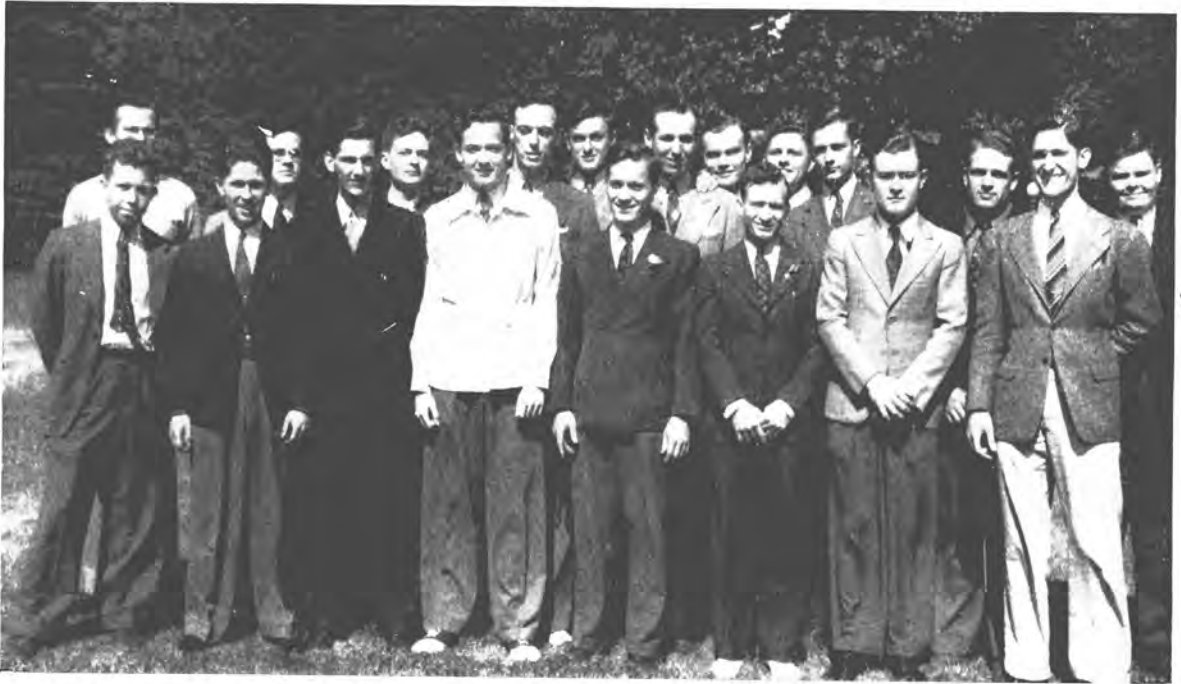
# PUBLICATIONS BOARD



ROBERT A. ELDER.....	President
DR. A. S. MCILWAINE.....	Secretary
MR. C. L. SPRINGFIELD.....	Treasurer
DR. OGDEN BAINE.....	Faculty Member
WILLIAM MCBURNEY.....	Senior
ROBERT QUINDLEY.....	Junior
HARRY HILL.....	Sophomore

The Publications Board directs and controls all student publications especially their finances and advertising. Composed of a student president, three elected representatives from the senior, junior, and sophomore classes, two faculty members, and the college bursar, the board elects the editors and the business managers of the *SOU'WESTER*, the *LYNX*, and the *JOURNAL*.

# THE MINISTERIAL CLUB



President.....WALTER BADER  
 Vice-President.....JAMES COGSWELL  
 Secretary-Treasurer.....DAVID OSBORN  
 Faculty Adviser...DR. R. T. L. LISTON

Carl Arnault  
 Geren Baird  
 William Belcher  
 William Bobo  
 Robert Cogswell  
 Hervey Conway  
 Allen Craft  
 Herbert Dawson  
 Ray Dobbins  
 Thomas Duncan  
 George Edwards

Walter Hall  
 George Jackson  
 Cheves Ligon  
 Campbell Long  
 Judson McKellar  
 Sam Prest  
 Robert Quindley  
 Robert Robinson  
 Jac Ruffin  
 Fred Wolf

The Ministerial Club is composed of those students that are preparing for the ministry and those interested in religious activities. It meets monthly for a discussion of some of the problems of the ministry and religious work. It also carries out a program of service activities both in Memphis and neighboring towns.



# T H E

# C H O I R

ANNE TUTHILL.....President  
 JAMES COGSWELL.....Vice President  
 ELIZABETH DAY.....Secretary  
 KURT ELIAS.....Librarian

Members:

Maxine Allen  
 Doris Cullings  
 Marian Dickson  
 Jeanette Hollenberg  
 Stella Jones  
 Jane Lederer  
 Mary McAdams  
 Marjorie McEllroy  
 Dorothy McGehee  
 Margaret Ragsdale  
 Sarah Sparacino  
 Celeste Taylor  
 Katherine Walker

Ethel Williams  
 Nena Williams  
 Nell Wright  
 Elizabeth Jetter  
 Margaret Sanders  
 Elizabeth Scarbrough  
 Marjorie Schloss  
 Priscilla Shumaker  
 Mary Ann Simonton  
 Diana Wallace  
 Jack Booth  
 Robert Cogswell  
 James Cogswell  
 Jack Conn

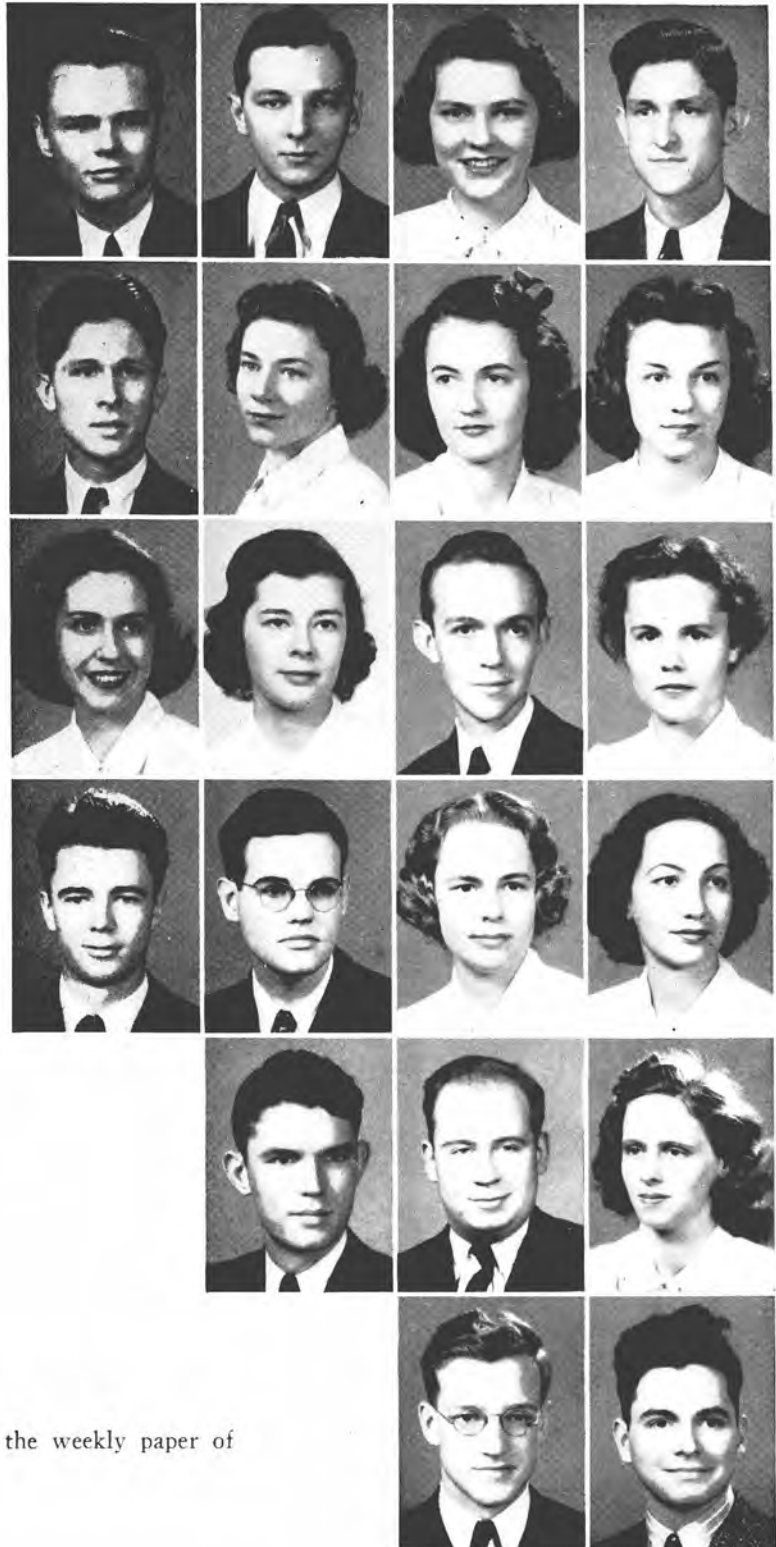
Sam Fisher  
 Frank England  
 Hugh Black  
 Billie Byrd  
 Chester Campbell  
 Pat Davis  
 Tom Duncan  
 Warner Hodges  
 William Munday  
 Bob McCrary  
 David Ruffin  
 Wesley Walker  
 John Young  
 Robert Price

The Southwestern Singers is the primary musical organization on the campus. It performs at Vesper Services and appears at various schools and churches in this vicinity.

# THE SOU'WESTER

WILLIAM MURPHY.....Editor  
 JOHN YOUNG.....Business Manager

Frances Akers  
 James Cogswell  
 Robert Cogswell  
 Kate Weaver  
 Amelia Plesofsky (not pictured)  
 Dorothy Waller  
 Dorothea Wyatt  
 Paula Harris  
 Diana Wallace  
 William McBurney  
 Anne Potts  
 Elder Shearon  
 Jac Ruffin  
 Anne Tuthill  
 Dorothy Hammond  
 Judson McKellar  
 Robert Goostree  
 Dorothy McGehee  
 Carroll Maxwell  
 William Moorhead  
 James Allman  
 Russell Wiener



The Sou'wester is the weekly paper of the campus.

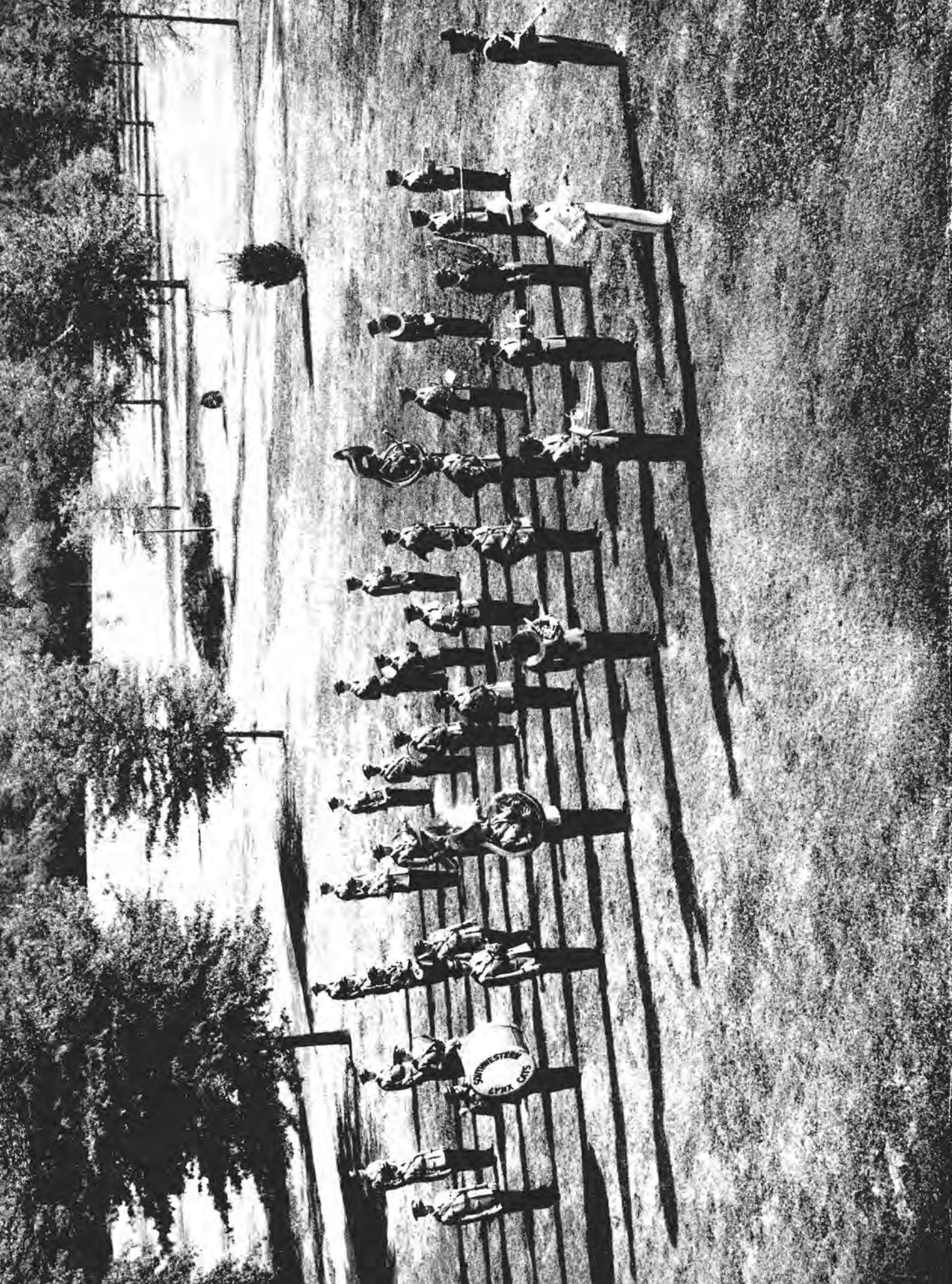


# THE LYNX



GEORGE JACKSON..... Editor  
 WILLIAM DONELSON..... Business Manager  
 BAILEY CAMPBELL..... Art Editor  
 WALTER HALL..... Assistant Editor  
 TOM SIMPSON..... Assistant Editor

Robert Quindley  
 Betty Orgill  
 Stella Jones  
 Margaret Mason Jones  
 Marion Slusser  
 Elizabeth Jones  
 Chevis Ligon  
 Catherine Hollinger  
 Harriette Hollis  
 Louise Jennings  
 Harry Prest  
 Rothrock Miller  
 Kitty Bright Tipton



# T H E B A N D

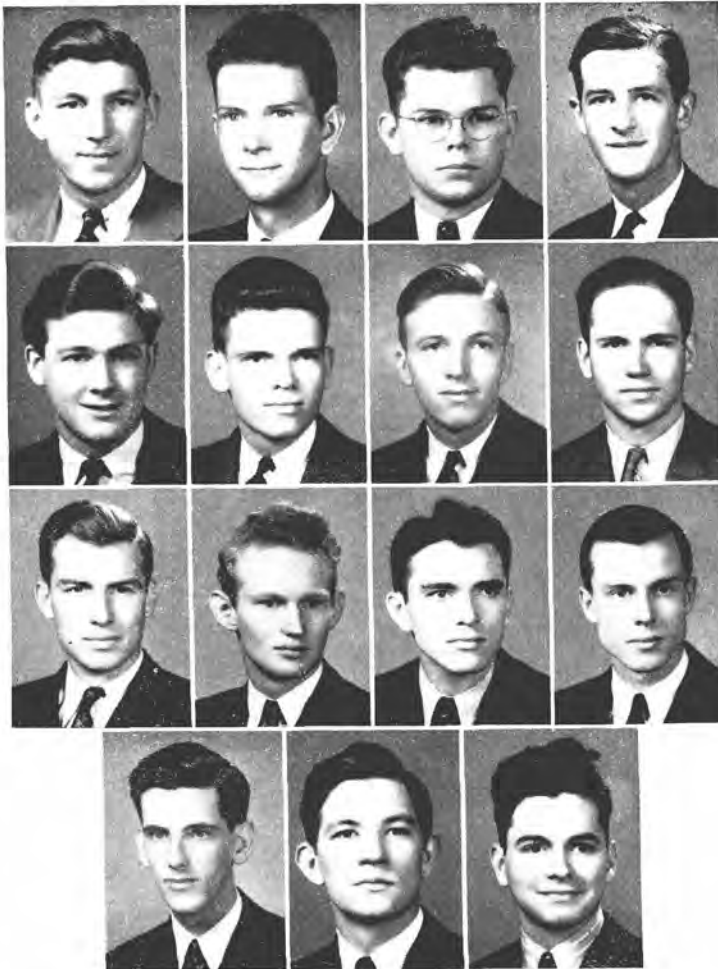


ALEC CORTNER  
President  
BARNEY GALLAGHER  
Vice-President  
ROBERT GOOSTREE  
Secretary

Ralph Alperin  
Carl Arnoult  
Gorton Berry  
Hugh Black  
William Bobo  
Jack Booth  
Paul Bugg  
Chester Campbell  
James Campbell  
Bland Cannon  
Walton Cole  
J. A. Costello  
James Dougherty  
Willis Ensign  
Ned Hermann  
William Holeman  
Boyce Johnson  
Thomas Kelly  
Chevis Ligon

Tom Logan  
Henry Lynch  
Maurice Miller  
William Miller  
Tom Mobley  
William Moorhead  
Irving Osborne  
John Pond  
Robert Price  
Ernest Reid  
Eugene Reynolds  
Robert Rhodes  
H. C. Robertson  
Tunkie Saunders  
Walter Scott  
Campbell Sharp  
David Schulherr  
William Tankersley  
Wesley Walker  
James Wood

# STUDENT SERVICE CLUB



President  
WILLIAM W. WORTHINGTON

Vice President  
JOHN WOOLSEY

Secretary  
CECIL NEW

Claude Brown  
William Buckingham  
Bland Cannon  
Allen Craft (not pictured)  
John Flaniken  
John Gibson  
Ned Hermann  
Boyce Johnson  
John McGrady  
Robert Meacham  
Robert Robinson (not pictured)  
Ryce Russum  
Robert Siedentopf  
Allen Webb  
Russell Wiener

The Student Service Club was founded in 1936 in order to stimulate interest in college activities by decorating and ushering at inter-collegiate contest, welcoming new students, furnishing transportation for visitors, sponsoring the Student Directory, and serving in any other possible way. Regular membership is limited to a sophomore and a junior from each fraternity and the non-fraternity group, unless one of their members is an officer of the club.





C  
A  
N  
D  
I  
D  
V  
I  
E  
W  
S

O N T H E C A M P U S

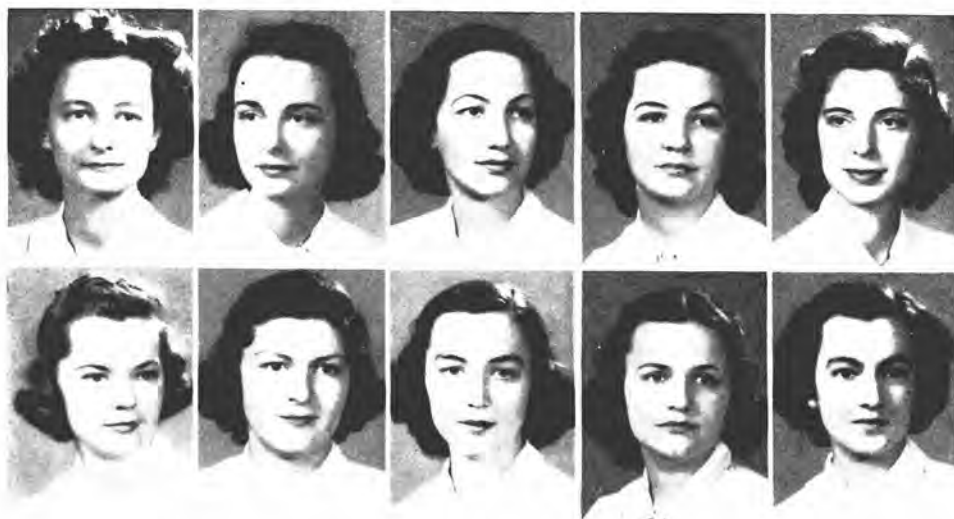




C  
A  
N  
D  
I  
D  
V  
I  
E  
W  
S

O N T H E C A M P U S

# WOMEN'S PAN-HELLENIC COUNCIL

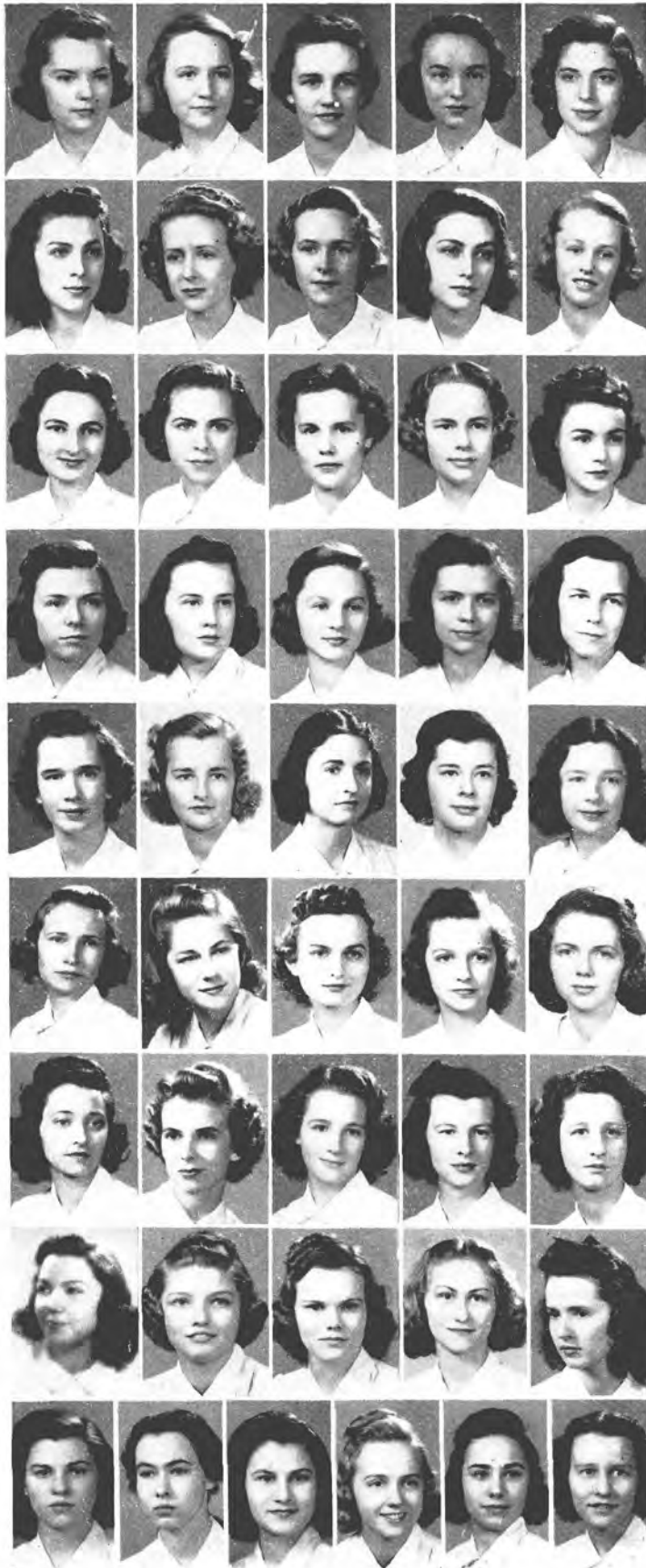


JEAN WALTON, Kappa Delta.....President  
 VIRGINIA WAGGENER, Alpha  
 Omicron Pi .....Vice-President  
 DOROTHY HAMMOND, Zeta  
 Tau Alpha.....Secretary  
 CATHERINE MOORE, Delta  
 Delta Delta.....Treasurer

Harriette Hollis, Chi Omega  
 Mary Louise Hughes, Chi Omega  
 Priscilla Shumaker, Kappa Delta  
 Louise Jennings, Alpha Omicron Pi  
 Kate Parker, Zeta Tau Alpha  
 Marion Dickson, Delta Delta Delta

The Women's Pan Hellenic Council consists of two representatives from each sorority. It supervises sorority rushing and meets once a month to discuss problems of the women's social organizations on the campus. Once each fall the Council gives a Women's Pan-Hellenic Dance.

C  
H  
I  
  
O  
M  
E  
G  
A



Hughes  
Eckert  
M. Jones  
S. Jones  
Hollis

Ware  
L. Blue  
B. Blue  
Daniels  
E. Jones

Lederer  
Orgill  
Potts  
Tuthill  
Wetherbee

Work  
Carroll  
Harsh  
Holder  
Mitchell

Ramsey  
Smithwick  
Tate  
Wallace  
Armstrong

Cavett  
Claffey  
Dean  
C. Eckert  
Hollenberg

Paine  
Tipton  
Walker  
Williamson  
Cash

Busby  
Fauntleroy  
Garrott  
Ingram  
Mathewes

McFall  
M. Potts  
Pritchatt  
Rosamond  
Wellford  
White

# Chi Omega

## KAPPA BETA CHAPTER

Founded at the University of Arkansas, Fayetteville, Arkansas, in 1895

Established at Southwestern in 1922.

Number of Chapters: 94

Flower: White Carnation

Colors: Cardinal and Straw

### OFFICERS

President . . . . .	MARY LOUISE HUGHES
Vice-President . . . . .	ANN ECKERT
Secretary . . . . .	MARGARET JONES
Treasurer . . . . .	STELLA JONES
Pledge Chairman . . . . .	HARRIETTE HOLLIS
Correspondent . . . . .	MARY WARE
Herald . . . . .	LOUISE BLUE

### MEMBERS

1940

Betty Blue  
Josephine Daniels  
Ann Eckert  
Mary Louise Hughes  
Margaret Jones  
Elizabeth Jones  
Stella Jones

Jane Lederer  
Betty Orgill  
Ann Potts  
Anne Tuthill  
Ethel Wetherbee  
Annie Few Work

1941

Carolyn Carroll  
Mary Elizabeth Harsh  
Elizabeth Holder  
Harriette Hollis  
Ruth Mitchell

Catherine Ramsey  
Elise Smithwick  
Adair Tate  
Diana Wallace

1942

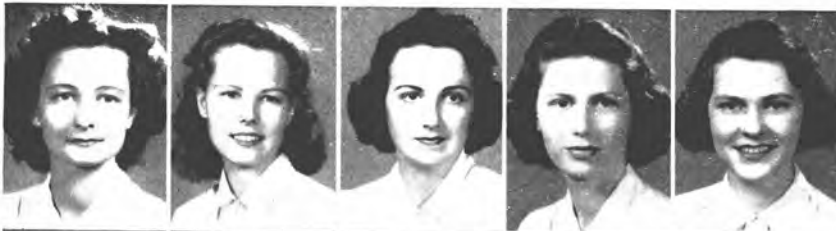
Nora Armstrong  
Mina Cavett  
Betty Jean Claffey  
Barbara Dean  
Cary Eckert  
Jeanette Hollenberg

Louise Blue  
Annabelle Paine  
Kitty Bright Tipton  
Katherine Walker  
Mary Ware  
Jean Williamson

1943

Frances Cash  
Nell Busby  
Betsy Fauntleroy  
Cornelia Garrott  
Mary Louise Ingram  
Milton Mathewes

Beverly McFall  
Minna Potts  
Winnie Pritchard  
Constance Rosamond  
Roberta Wellford  
Lucy White



Walton  
 Moyer  
 White  
 Lee  
 Akers



Day  
 Mullins  
 Shumaker  
 Belcher  
 Brewer



Quenichet  
 Small  
 Esch  
 Harris  
 McGehee



Amis  
 Eaton  
 Fulmer  
 Likley  
 McAdams



Murphy  
 Prater  
 Klyce  
 Walker



# Kappa Delta

## ALPHA DELTA CHAPTER

Founded at Virginia State Normal, Farmville, Virginia, in 1897

Established at Southwestern in 1925

Number of Chapters: 68

Flower: White Rose

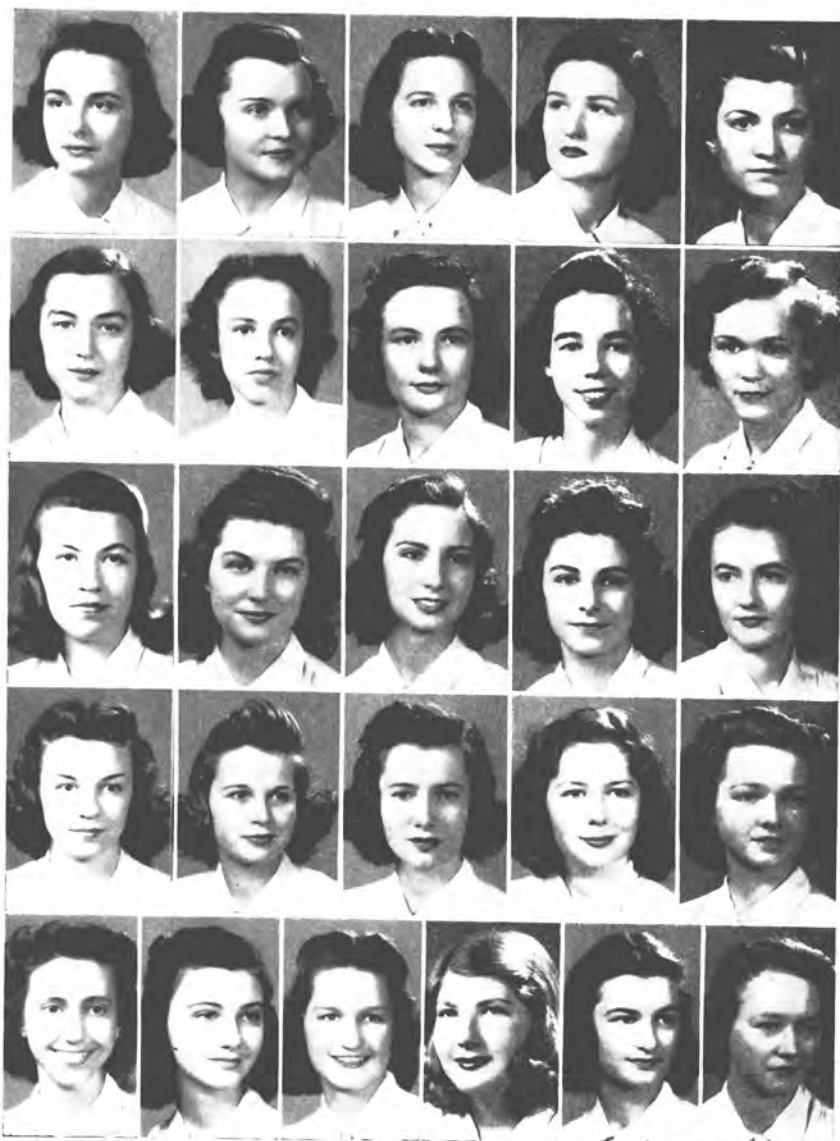
Colors: Olive Green and Pearl White

### OFFICERS

President . . . . .	JEAN WALTON
Vice-President . . . . .	MARGARET MOYER
Secretary . . . . .	DEOLA WHITE
Treasurer . . . . .	RUTH LEE
Editor . . . . .	FRANCES AKERS

### MEMBERS

	1940	
Elizabeth Day Margaret Moyer		Elizabeth Mullins Priscilla Shumaker
	1941	
Evelyn Belcher Nelle Brewer Eugenia Carter Ruth Lee		Helen Quenichet Martha Small Jean Walton Deola White
	1942	
Frances Akers Dorothy Esch		Paula Harris Laura McGehee
	1943	
Polly Jean Amis Mary Eaton Frances Fulmer Jean Likely Mary McAdams		Carolyn Murphy Martha Prater Justine Klyce Mary Walker



Waggener  
     Meux  
         Noce  
             Wood  
                 Hollinger  
  
 Jennings  
     Mangum  
         Douglass  
             Flynn  
                 Heppel  
  
 Mosby  
     Wooten  
         Fourmy  
             Gilfillan  
                 Waller  
  
 Wyatt  
     Hill  
         Hinckley  
             Knowlton  
                 Miller  
  
 Moore  
     New  
         Polk  
             Scott  
                 Simonton  
                     Wright

# Alpha Omicron Pi

## KAPPA OMICRON CHAPTER

Founded at Barnard College, Columbia University, in 1897

Established at Southwestern in 1925

Number of Chapters: 41

Flower: Jacquement Rose

Colors: Red and White

### OFFICERS

President . . . . .	VIRGINIA WAGGENER
Vice-President . . . . .	JO MEUX
Corresponding Secretary . . . . .	MILDRED NOCE
Recording Secretary . . . . .	NANCY WOOD
Treasurer . . . . .	CATHERINE HOLLINGER
Junior Pan Hellenic Representative . . . . .	LOUISE JENNINGS

### MEMBERS

	1940	
Catherine Hollinger		Virginia Waggener
Virginia Mangum		Nancy Wood
Jo Meux		
	1941	
Mary Elizabeth Douglas		Hester Mosby
Jean Flynn		Mildred Noce
Virginia Heppel		Arabia Wooten
Louise Jennings		
	1942	
Margy Curry		Dorothy Waller
Joye Fourmy		Dorothea Wyatt
Jo Gilfillan		
	1943	
Cecelia Hill		Mary New
Elizabeth Hinckley		Margaret Polk
Virginia Knowlton		Ann Coate Scott
Katherine Miller		Mary Ann Simonton
Gladys Moore		Nell Wright



Hammond

Pearce

Joyner

Parker

Palmer



Hennington

Robinson

Adams

Hanna

Sparacino



Williams

Cato

Little

Smith

# Zeta Tau Alpha

## BETA SIGMA CHAPTER

Founded at Virginia State Normal, Farmville, Virginia, in 1898

Established at Southwestern in 1929

Number of Chapters: 74

Flower: White Violet

Colors: Steel Gray and Turquoise Blue

### OFFICERS

President . . . . .	DOROTHY HAMMOND
Vice-President . . . . .	IRIS PEARCE
Secretary . . . . .	BENNIE JOYNER
Treasurer . . . . .	KATE PARKER
Historian . . . . .	MARIE PALMER

### MEMBERS

1940

Dorothy Hammond

1941

Virginia Hennington  
Marie Palmer

Barbara Jane Robinson

1942

Jane Chilton Adams  
Dorothy Hanna  
Bennie Joyner  
Kate Parker

Iris Pearce  
Sara Sparicino  
Nena Williams  
Jeanne McKenney

1943

Annelle Cato  
Georganne Little  
Mary Virginia Smith

Elizabeth Hicks  
Mary Vance Rhodes  
Shirley Woods





Moore  
Fransioli  
Ragsdale  
McEllroy  
Scarborough

Dickson  
Miller  
Taylor  
Stacy  
DeVall

Bright  
Carloss  
Jackson  
M. Ragsdale  
Reeves

Sanders  
Weaver  
Bostick  
Botto  
Fleming

Howry  
Hunter  
Stanford  
Warr  
Worten

# Delta Delta Delta

## DELTA PSI CHAPTER

Founded at Boston University in 1888

Established at Southwestern in 1931

Number of Chapters: 87

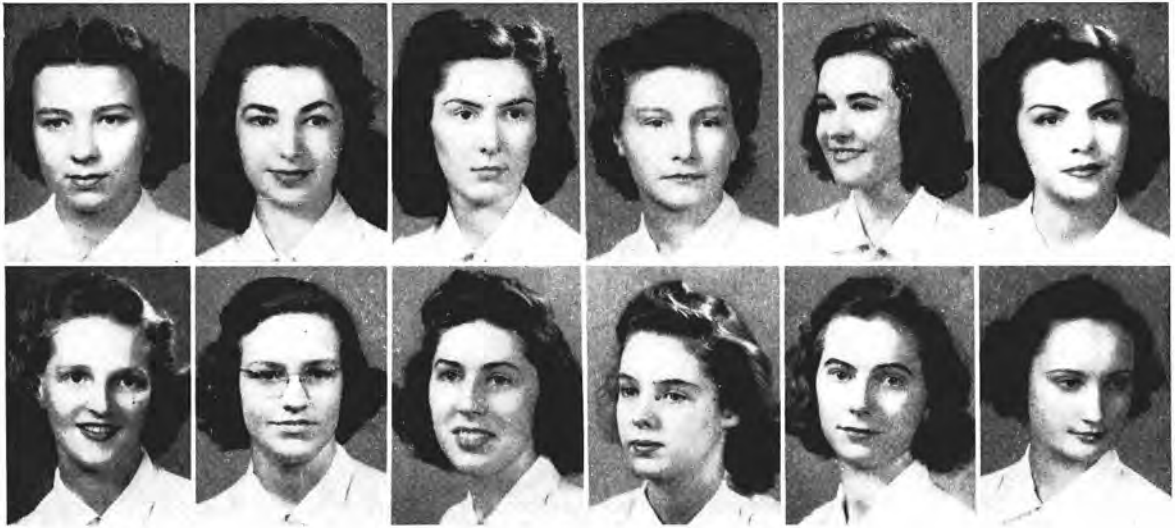
Flower: Pansy

Colors: Silver, Gold, and Blue

### OFFICERS

President . . . . .	CATHERINE MOORE
Vice-President . . . . .	KATHLEEN FRANSIOLI
Recording Secretary . . . . .	VIRGINIA RAGSDALE
Corresponding Secretary . . . . .	MARJORIE McELLROY
Treasurer . . . . .	ELIZABETH SCARBROUGH
Marshal . . . . .	MARION DICKSON
Chaplain . . . . .	MARTHA MILLER
Rush Chairman . . . . .	CELESTE TAYLOR
Historian . . . . .	DOROTHY STACY
Librarian . . . . .	REAMA DEVALL
Junior Pan Hellenic Representative . . . . .	MARION DICKSON

	1940	
Marjorie McEllroy		Virginia Ragsdale
Catherine Moore		
	1941	
Marion Dickson		Elizabeth Scarbrough
Kathleen Fransioli		Dorothy Stacy
Mildred Hubbard		
	1942	
Norma Bright		Margaret Ragsdale
Peggy Carlross		Jeanne Reeves
Reama DeVall		Margaret Sanders
Marie Jackson		Celeste Taylor
Martha Miller		Kate Weaver
	1943	
June Bostick		Jean Magee Murray
Dale Botto		Betty Ransom
Ruth Fleming		Sara Stanford
Louise Howry		Boyce Warr
Mary Hunter		Ann Worten
Charlotte McKnight		



# INDEPENDENTS

## OFFICERS

MAXINE ALLEN . . . . . President  
 DOROTHY McGEHEE (not pictured) . . . . . Vice President  
 KATHERINE GOLDBERGER . . . . . Secretary-Treasurer

## MEMBERS

Eleanor Boothe  
 Madeleine Brabant  
 Marie Coffey  
 Ann Godbold  
 Ruth Logsdon  
 Katherine McCulloch  
 Josephine Rhea  
 Dorothy South  
 Jane Peete  
 Ethel Williams

THE LYNX . . .



# THE "S" CLUB

The "S" Club is composed of all the men who have earned a letter in any one of the intercollegiate sports in which Southwestern takes part. These sports at present are football, basketball, tennis and track.

President . . . CHARLES PERRY  
 Vice-President . . . J. P. CAVENDER  
 Secretary . . . HARRY J. MORRIS

*Honorary Members:*

Frank England            John A. Rollow  
 Dr. W. R. Atkinson     Dr. Ogden Baine  
    J. J. Brennan

James Andrew  
 Leslie Bailey  
 P. T. Baker  
 George Blakemore  
 Claude W. Brown  
 Tony Canzoneri  
 Clifford Cast  
 Jack Conn  
 Luke Dawson  
 Fred Drees  
 Harold Falls  
 Thomas E. Foley

Doyle Fuller  
 Hays Heaton  
 Harold Jones  
 Bill Little  
 Bernard Lockeridge  
 John McGrady  
 Bob Meacham  
 William Murrah  
 Irving Orenstein  
 Abe Palmer  
 Fred Partin  
 Henry Peek  
 Baxter Pouncey  
 Leon Underwood  
 Beryl Waller  
 Will Rhea Winfrey  
 J. W. Wood



# ON THE GRIDIRON....



The football season of 1939 was indeed a gloomy one for Southwestern. Coach Ed Kubale and his assistants were faced with the problem of rebuilding the Lynx team to fill the gap left by the graduation of All-American Gaylon Smith and his seven senior team mates. Around these men was built the greatest team in the history of the ivy-covered college, it was the team that has amassed 228 points against the opposition's 28 during the nine week season of 1938. The record showed seven wins, one tie and one loss.

September 1st found the Lynx squadmen encamped in Maywood where they were preparing for their 1939 suicide schedule. 37 days later following a period of endless training, Southwestern met the Ole Miss Rebels in October 7th game in Crump Stadium. In the starting lineup, there were





five green sophomores on the squad. All afternoon the Rebel team that had won over L. S. U. the previous Saturday, found little difficulty in beating the game but outclassed Lynx team 41 to 0.

A week later Southwestern played to a 7 to 7 deadlock with the Washington and Lee Generals in a game the Lynx should have won. Neither team had the necessary scoring power to win the game. Fumbles and penalties hampered the Lynx.

In their first out of town game of the season Mississippi State Bulldogs whitewashed the Lynx Cats at Starkville, Miss., 37 to 0. After holding the Bulldogs in the earlier part of the game, Southwestern weakened under the Bulldogs' power-driving tactics to lose the second game of the season.

Most bitterly fought game of the year was the Southwestern-Sewanee night tilt in Crump Stadium. Coach Kubale's charges threatened to score on Sewanee in every quarter, but were again hounded by bad breaks and penalties. In the waning moments of the game when everyone believed that the game would end in a scoreless deadlock the Sewanee Tiger came to life when a Purple and White end caught a fumbled center and raced for a touchdown. This gave Sewanee the six points necessary for a glorious victory over the Lynx.

The first week in November found the Lynx in New Orleans where they were ready to meet the highly-touted Loyola Wolves. It was here that the "iron men" of Southwestern gained prominence for their entire sixty minute performance in upsetting Loyola 21 to 0. There was only one substitution in the final



seconds of this long-to-be-remembered game. The 12 Lynx played superb football against Loyola to make up for the games lost earlier in the season.

On Armistice Day, November 11, the Lynx met Howard College's Bulldogs in Crump Stadium. In a sea of mud the Kubale overpowered Howard 13 to 6. At last it seemed that the unexperienced sophomores had found themselves and were now ready to face the stiffest of opposition.

For their annual Homecoming Day game, Southwestern's Lynx clashed with former Lynx coach Jess Neely's Clemson Tigers. The Tigers, headed by All-American Quarterback Banks McFadden, scored twice in the first half of the game. In the second half the Lynx were determined to stop and hold the now-rampant Tigers and Banks McFadden, which they did. By employing sheer power and a very deceptive brand of football Clemson finally nosed out Southwestern 21 to 6.

Tired but happy after their fine showing against Clemson, Southwestern's Lynx journeyed to Shreveport to drop a close 13 to 7 decision to Centenary College's Gentlemen.

Closing the 1939 season, still in the red ink, Southwestern met their Memphis rivals, State Teachers' College, in a post-season game in Crump Stadium. The Lynx' vastly superior team smothered the Tutors 32 to 0. A huge crowd of Memphians witnessed the last appearance of the Lynx for 1939 and was convinced that the team was far better than the scoreboards had shown throughout the entire season.



## FOOTBALL PROSPECTUS FOR 1940

Southwestern's nine game football schedule for 1940 might easily be that schedule of one of our large state universities instead of the ivy-clad institution at Memphis boasting a student body of some four hundred and seventy-five students, of which nearly half the students are women. Included in the 1940 lineup of games are three Southeastern Conference elevens, one Southern Conference team, and five other teams of lesser national reputation. Coach Kubale has indeed a fine gridiron display of opposition for Southwestern, to please the sports loving public of Memphis and the Mid-South area.

1940 will find last year's sophomores and juniors better prepared and conditioned for the nine weeks grind. A large supply of effective reserves should aid the Lynx to overcome the difficulty in playing teams, who have many more reserves than Southwestern. The spring practice was more than satisfactory to all observers and the Lynx coaching staff. All in all 1940 will be the Lynx long-hoped-for chance for fame throughout Dixie.

Two 1939 "bowl teams" appear on the Lynx grid card. The University of Tennessee's mighty Volunteers make their first appearance in Crump Stadium for the year on November 9th. Clemson's Tigers, coached by ex-Lynx tutor Jess Neely last year, will meet Southwestern on the week following the Tennessee game.

## FOOTBALL SCHEDULE 1940

September 27—West Tennessee Teacher's College (night)	Memphis
October 5—Ole Miss	Memphis
October 10—Union University	Jackson, Tenn.
October 18—Hendrix College (night)	Conway, Ark.
October 26—Mississippi State	Memphis
November 2—Howard College (night)	Birmingham, Ala.
November 9—University of Tennessee	Memphis
November 16—Clemson College	Memphis
November 23—Centenary College	Memphis

# ON THE HARDWOOD . . .



Coach Bob Waddle's 1939-40 edition of the Lynx basketball team had more than its share of bad luck last season to win only four of their sixteen collegiate games. A small squad of men to pick a team from, lack of experience and the Lynx' ill fate to lose games by a one or two point margin all contributed to hand the Southwestern basketball their poorest season in years.

Southwestern dropped games to Arkansas College, Ole Miss, Mississippi College, Millsaps, Ole Miss and Arkansas College in that order before winning their first game of the season. On their annual Delta road trip this winter Southwestern met the famed Choctaws of Mississippi College of Clinton, in a two game series. In the first game played in Clarksdale, the Lynx upset the Choctaws 30 to 29. In beating the Choctaws, who were the best team in the State of Mississippi last season, the Lynx thrilled a large crowd of sports-loving Mississippians. To climax the trip Southwestern journeyed to Greenville on the following night to give Mississippi College a chance "to even things up." Again the Lynx arose to play superb basketball and turn back the Choctaws by the score of 51 to 49. The remainder of the season found the Lynx dropping games to Louisiana State University, Teacher's College, the Y. M. H. A. and Howard College of Birmingham and snaring a game from Sewanee's Blue and White Tigers.



In the Dixie Conference Tournament held in Jackson Southwestern defeated Chattanooga University's Moccasins in their first round game and then being eliminated by Mercer College of Macon, Georgia, in the second round. This setback thwarted the Lynx's hope of a tournament victory, in spite of their unfortunate success during the year.

George Blakemore, captain of the team, was the outstanding man of the season. Blakemore was the high scorer for the Lynx and a leader in the Dixie Circuit. He was selected on the All-Dixie Conference team for the second time. Tony Canzoneri, Beryl Waller, Jack Conn, Dan West, Bland Cannon, Red Goodrich, Stob Jones, Johnny McGrady, Icky Orenstein, and Fred Partin all ably assisted in what several sports writers called "the Lynx's lost cause."

### DIXIE CONFERENCE TOURNAMENT

<i>Games</i>	<i>Place</i>	<i>Southwestern</i>	<i>Opponent</i>
Chattanooga Univ.....	Jackson, Miss. ....	34	32
Mercer .....	Jackson, Miss. ....	35	39
Arkansas College.....	Memphis .....	48	63
Ole Miss.....	Memphis .....	43	56
Miss. College .....	Clinton, Miss. ....	36	51
Millsaps College.....	Jackson, Miss. ....	38	44
Ole Miss.....	Oxford, Miss. ....	42	49
Arkansas College.....	Batesville, Ark. ....	31	61
Miss. College.....	Clarksdale, Miss. ....	30	29
Miss. College.....	Greenville, Miss. ....	51	49
W. Tenn. St. Teachers.....	There .....	44	46
Sewanee .....	Memphis .....	46	37
Louisiana St. Univ.....	Marion, Ark. ....	41	61
W. Tenn. St. Teachers.....	Here .....	36	39
Y. M. H. A. (Birmingham).....	Birmingham .....	35	36
Howard College.....	Birmingham .....	33	52



Coach Waddle,  
Orenstein and  
McGrady

# ON THE TRACK . . . . .



Seventeen thin-clads of Southwestern after a bad start of losing meets to Arkansas State and Vanderbilt, finally came into the winning column to beat Ole Miss and Mississippi College to give the Southwestern track team of 1940 an even break in dual meets. They also finished third in the Dixie Conference meet held in Jackson, Mississippi.

Coach Chicken High had a well rounded squad of seventeen men. His outstanding stars were freshman Bill Pope, Leon Underwood, Bob Foley, the West Brothers and Ray Bearden, who equaled or bettered several school records. Bill Pope was the leading thin-clad of the season, who starred in the dashes and the relay, breaking the school record for the two hundred and twenty yard dash and equalling Henry Peek's 1939 record for the hundred yard dash. Underwood was the leading pole-vaulter. Broad jump honors fell to Bob Foley. In the field events the West Brothers, Mercer and Dan, took the discus and the shot put, while Ray Bearden threw the javelin. Winston Cocke, Henry Peek, Fred Ross, Luke Dawson, Johnny Iles, Jack Conn, Neal Williams, and Eddie Daigle ably supported the team in the running events. In the field events Audie Scott, Pinky Falls, Fred Partin, and Lewis Wellford completed the team.

# ON THE COURTS . . . . .



Professor P. N. Rhodes' Lynx tennis team enjoyed one of their best seasons in a number of years this spring, despite the loss of four experienced netmen from last year's team. To fill the positions left by Tom White, Waddy West, Henry Boothe, and Hank Walker, Coach Rhodes found an abundance of talent supplied by four new men. Together with Bob Meacham, in the number one slot, and veterans Bill Murrah, John McGrady, and the four newcomers the team won nine out of eleven matches.

Losing matches to Memphian Lou Faquin's Spring Hill College team and to Joe Davis and the Vanderbilt squad in Nashville, the Lynx won the other nine matches with comparative ease. After beginning training and practice late in the spring, due to cold weather and frequent rains, the Lynx hit their stride and won from Arkansas State, Lambuth, Birmingham-Southern, Millsaps, Mississippi College, Sewanee, and State Teachers.

Meacham played fine tennis to lead the squad throughout the season. Only a sophomore, he will have two more years with Southwestern. John McGrady, senior and student body president, and Bill Murrah, junior, were the only other experienced men to see service. Lewis Wellford of New Orleans, Mac Hinson and Jimmy Collier of Memphis were the "freshman finds" of the year. Any one of these men might lead the Lynx, playing in the top bracket next year. Cecil New, senior and municipal ping pong champion, came into his own this year and played in every match. Bailey Campbell was a playing member as well as manager of the 1940 squad.

# ON THE LINKS . . .

The lack of interest in the sport at Southwestern may be given as the reason for the unsuccessful season experienced by the Lynx golfers. Also the lack of practice and the inexperience of several new men may be given as reasons for the bad showing.

Robert Stites held down the No. 1 spot all season due to the fact that he was the most experienced man on the team. His ability as a golfer was shown when he reached the quarter finals of the Dixie-Conference Tournament at Spring Hill.

Other members making up the team are: Jimmy Holcombe, Bill Wooten, who held down the No. 3 position and showed the best form of the new men, Billy Belcher, and Bob McCrary.

The entire team with the exception of Belcher will be back next year. Dr. Kelso was faculty advisor for the team.

The scores of matches for the past season are:

Ole Miss—18	Southwestern—0
Ole Miss—16½	Southwestern—1½
Spring Hill—17	Southwestern—2
Millsaps—17½	Southwestern—½

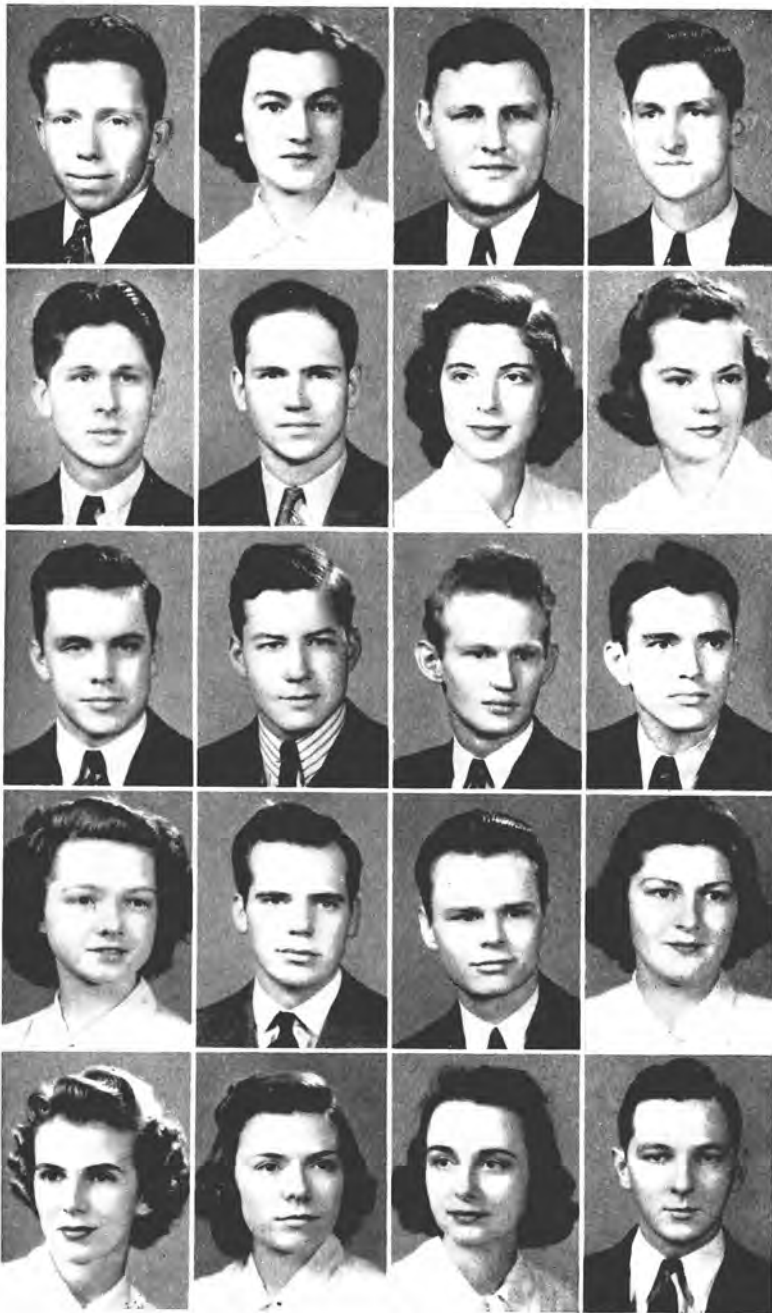


EVENING . . . . .  
MORE ORGANIZATIONS  
THE BEAUTIES • FRA-  
TERNITIES • VIEWS AND  
THE ADVERTISERS . . . . .









WALTER HALL . . . . President  
 ALLEN CRAFT . . . . Vice-President  
 MARION DICKSON . . . . Secretary

Walter Bader  
 James Cogswell  
 Robert Cogswell  
 Ned Hermann  
 Harriette Hollis  
 Mary Louise Hughes  
 George Jackson  
 Cheves Ligon  
 John McGrady  
 Robert Meacham  
 Katharine Miller  
 Tom Mobley  
 William Murphy  
 David Osborne (not pictured)  
 Priscilla Shumaker  
 Kitty Bright Tipton  
 Annie Few Work  
 Virginia Waggener  
 John Young

# CHRISTIAN UNION CABINET

The Christian Union Cabinet is made up of the officers of those groups on the campus which are strictly religious, the Ministerial Club, the Men's Bible Class, and the Y. W. C. A. In addition eight persons selected from the student body at large. The Cabinet directs student religious activities, and each year sponsors a week of prayer and consecration.

# STYLUS CLUB



WILLIAM MCBURNEY . . . . . President

KATHERINE MCCULLOCH Vice-President

WILLIAM BOBO (not pictured) Secretary

JAC RUFFIN . . . . . Treasurer

Thomas Pappas (not pictured)

Mildred Noce

Kathleen Fransioli

Marion Dickson

George Jackson

Anne Potts

Annie Few Work

Mary Elizabeth Harsh

Dorothy Hammond

Hester Mosby

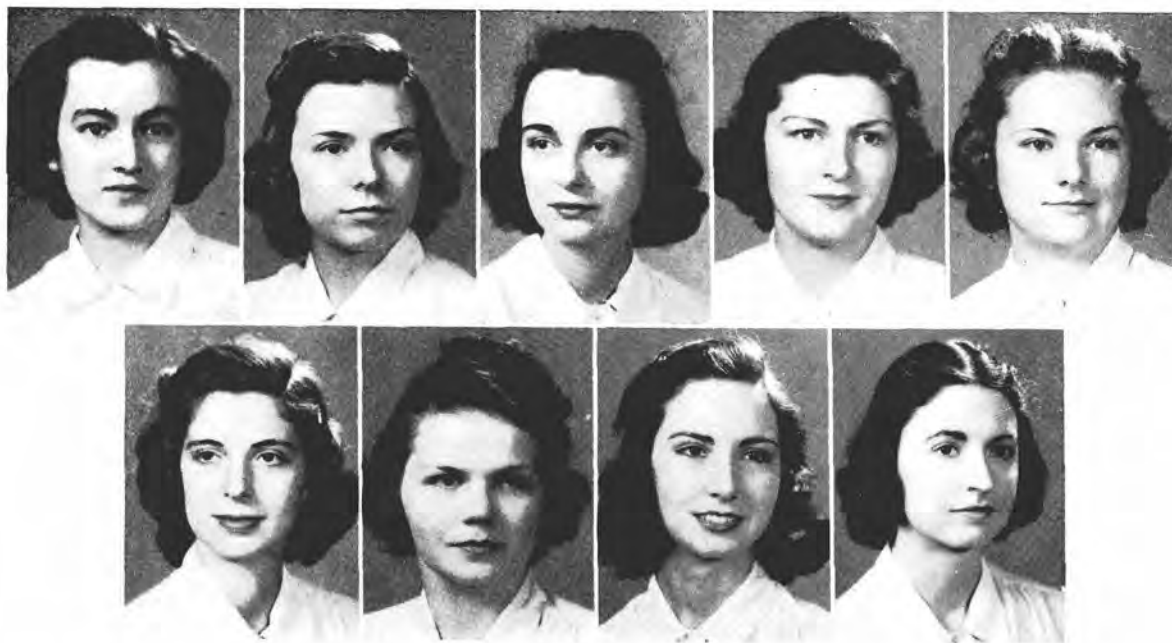
William Murphy

Robert Price (not pictured)

David Osborne (not pictured)

Jane Lee Lederer

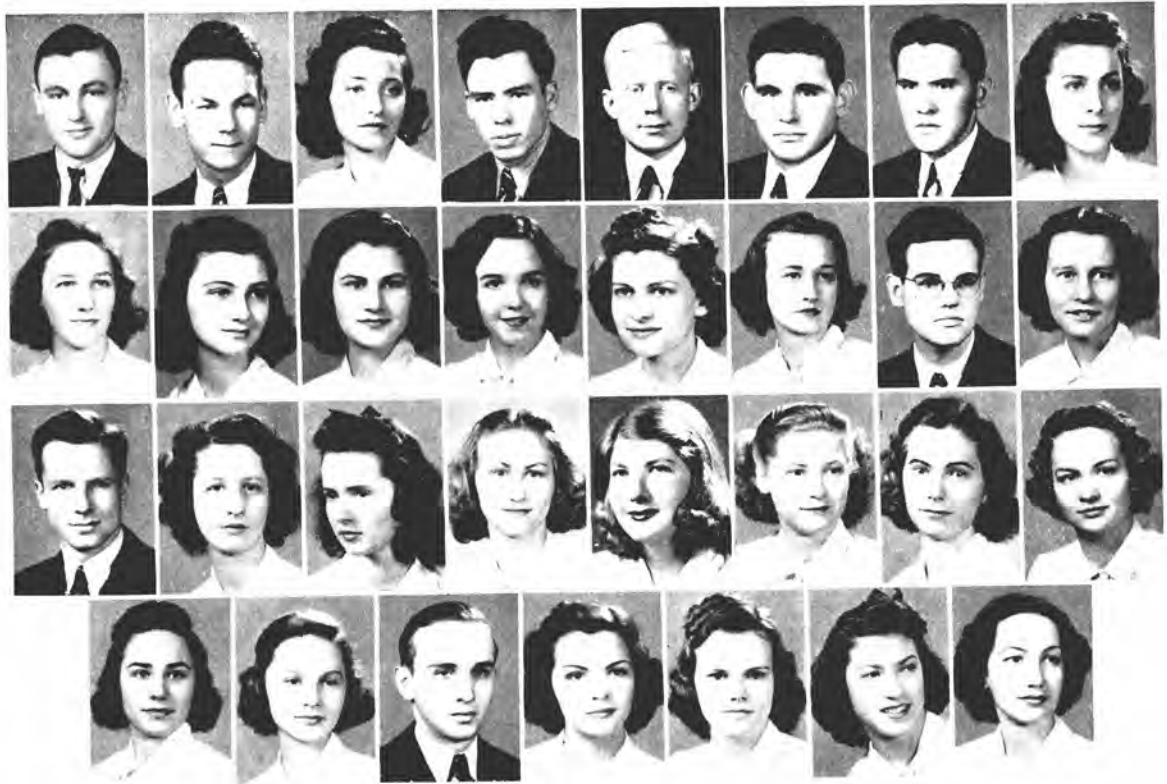
The purpose of the Stylus Club is to recognize and encourage literary ability among college students. Membership in the group is limited to twenty-four, new members being chosen through invitation to submit papers in competition, the best being selected. Bi-monthly meetings are held at which contemporary authors and the original work of the members are discussed. The Stylus Club, a combination of Stylus Chapter of Sigma Upsilon and the Blue Stockings, former campus literary groups, was organized this year under the guidance of Prof. A. S. McIlwaine.



# Y. W. C. A.

- MARION DICKSON . . . . . President  
 ANNIE FEW WORK . . . . . Vice President  
 VIRGINIA WAGGENER . . . . . Secretary  
 PRISCILLA SHUMAKER . . . . . Treasurer  
 NENA WILLIAMS . . . . . Devotional Chairman  
 HARRIETTE HOLLIS . . . . . Chairman of Social Service  
 MARTHA MILLER . . . . . Chairman of Music  
 JOYE FOURMY . . . . . Chairman of Publicity  
 ADAIR TATE . . . . . Chairman of Public Affairs  
 TOMMIE JEAN HAYGOOD . . . . .  
 (not pictured) . . . . . Chairman of Social Activities

The purpose of the Y. W. C. A. is three-fold: "To realize full and creative life through a growing knowledge of God; to have a part in making this life possible for all; and to promote friendship among the students and cooperation in campus activities."



# THE EPISCOPAL CLUB

WILLIAM BELCHER . . . . . President  
 JOHNSON RHEM . . . . . Vice-President  
 ANNABELLE PAINE . . . . . Secretary-Treasurer  
 WILLIAM DAVIDSON . . . . . Chaplain

Charles Orto  
 Dan West  
 Mercer West  
 Mary Ware  
 Dorothy Esch  
 Mary New  
 Winifred Pritchatt  
 Mary Walker  
 Dorothy Turner  
 Bennie Joyner  
 Jac Ruffin  
 Lucy White  
 Frances Akers (not pictured)  
 Dan Carruthers  
 Frances Cash

Milton Matthews  
 George Hale (not pictured)  
 Mary Ingram  
 Ann Scott  
 Marie Palmer  
 Jane Peete  
 Barbara Jane Robinson  
 Roberta Wellford  
 Mary Elizabeth Harsh  
 Harry Arnold  
 Ann Godbold  
 Cornelia Garrott  
 Louise Howry  
 Dorothy Hammond

The purpose of the Episcopal Club is to promote worship, fellowship, study, and service; to bring students together irrespective of religious affiliation; to discuss problems affecting the college student, and the relation of religion to everyday life. The Club also engages in social service work among the underprivileged of the city. Meetings are held twice a month at which various ministers of the city lead the discussions. A corporate Communion is attended by the Club the second Sunday of every month.



# CHI BETA PHI



TOM SIMPSON . . . . . President  
JOHN WOOLSEY . . . . . Vice President  
ORVILLE McMINN (not pictured) . . . . . Recording Secretary  
DAN CARRUTHERS . . . . . Corresponding Secretary  
JOHN KIER . . . . . Treasurer

Ned Hermann  
Charles Long  
Ralph Alperin  
Kurt Elias  
Robert Meacham  
William Murrah  
John Pond (not pictured)

Tau Chapter of Chi Beta Phi, honorary scientific fraternity, is composed of those students majoring in science who have passed at least twenty semester hours of science work with a high average.

# THE NITIST CLUB



RALPH ALPERIN, President

Dr. John H. Davis  
Dr. A. P. Kelso (not pictured)  
William Belcher  
George Case  
James Cogswell  
Robert Cogswell  
James Collier  
William Donelson  
Willis Ensign  
Frank Hammet  
George Jackson  
Newton Jones (not pictured)  
Rothrock Miller  
William Moorhead  
William Murphy  
Charles Orto  
Johnson Rhem  
Jac Ruffin  
Fred Wolf (not pictured)  
William Wooten

The NITIST CLUB, an affiliate of the International Relations Club, chooses its members by invitation. The club meets bi-monthly at which time a paper is presented by one of the members or an invited guest on a topic of current and general interest. A round-table informal discussion follows the paper.

The purpose of the NITIST CLUB is to stimulate campus interest in the vital questions of the day.

*Beauty*

D  
I  
A  
N  
A  
  
W  
A  
L  
L  
A  
C  
E



J  
O  
M  
E  
U  
X





VIRGINIA  
WAGGENER





K  
I  
T  
T  
Y  
  
B  
R  
I  
G  
H  
T  
  
T  
I  
P  
T  
O  
N

A  
N  
N  
E  
  
P  
O  
T  
T  
S





D  
A  
L  
E  
  
B  
O  
T  
T  
O



# PAN HELLENIC COUNCIL

TOM MOBLEY, Alpha Tau Omega . . . . . President  
 VIRGIL McCRANEY, Sigma Alpha Epsilon Vice President  
 FRANK ENGLAND, Kappa Sigma . . . . . Secretary-Treasurer

William Davidson, Pi Kappa Alpha  
 William Miller, Pi Kappa Alpha  
 Harold Falls, Alpha Tau Omega  
 Rothrock Miller, Sigma Alpha Epsilon  
 Johnson Rhem, Kappa Sigma  
 William McBurney, Kappa Alpha  
 Jac Ruffin, Kappa Alpha  
 Herbert Smith, Sigma Nu  
 Hays Brantley, Sigma Nu  
 John McGrady, President of Student Body  
 Wm. Murphy, Editor of the Sou'wester

The Men's Pan Hellenic Council is composed of two representatives from the six fraternities on the campus. Its purpose is to exercise a measure of control over fraternal activities. The council attempts to create and foster a sense of harmony among the fraternities by sponsoring campus dances during the year and a set of three dances between semesters.





Davidson  
Hodges

Miller  
Munday

Smith  
Russum

Andrews  
Spangler

Iles  
Webb

# PI KAPPA ALPHA

## *Theta Chapter*

Founded in 1868

Established at Southwestern in 1878

WILLIAM DAVIDSON . . . . .	President
WILLIAM MILLER . . . . .	Vice-President
ROBERT SMITH . . . . .	Secretary

1940

William Davidson, Robert Smith

1941

William Miller

1942

Lance Andrews, Johnny Iles

1943

Warner Hodges, William Munday, Ryce Russum, William Spangler, Edvard Webb



Falls

Cannon

Mobley

Hermann

Reed



Hearn

Hurley

Lynch

Moorhead

Robertson



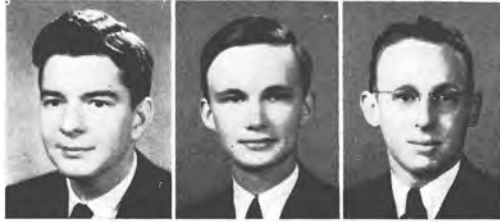
Long

Sandlin

Waller

Case

Gilmer



Holeman

Surber

Vaught

# ALPHA TAU OMEGA

*Tennessee Tau Omega Chapter*

Founded in 1865

Established at Southwestern in 1882

HAROLD FALLS . . . . .	Worthy Master
BLAND CANNON . . . . .	Worthy Chaplin
TOM MOBLEY . . . . .	Worthy Keeper of Exchequer
EDWARD HERMAN . . . . .	Worthy Scribe
CHARLES REED . . . . .	Worthy Keeper of Annals
W. J. HEARN . . . . .	Worthy Usher
CURTIS HURLEY . . . . .	Worthy Sentinel

1940

James Dougherty, Harold Falls, W. J. Hearn, Wallace Mayton, Tom Mobley

1941

Bland Cannon, H. C. Robertson, William Moorhead

1942

Charles Cable, Robert DeWar, Edward Herman, Curtis Hurley, Charles Long, Carroll Maxwell,  
Walker Sandlin, Charles Reed, Beryl Waller

1943

George Case, Vance Gilmer, William Holeman, W. C. Surber, Lee Vaught



McCraney  
 Carruthers  
 Parker  
 Elder  
 Cortner



Donelson  
 Baird  
 Cavender  
 Prest  
 Brown



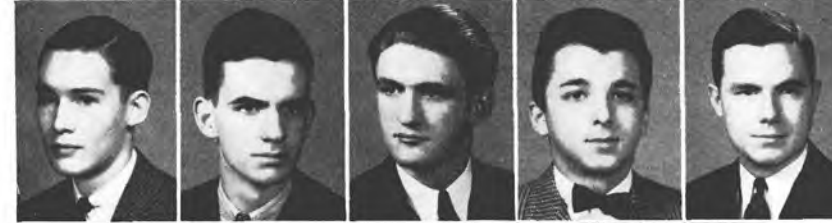
Berry  
 Belcher  
 Quindley  
 McGrady  
 McKellar



Miller  
 Campbell  
 Gibson  
 M. Miller  
 Reid



Allen  
 Ayres  
 Baggett  
 Collier  
 Craft



Haverty  
 Nall  
 Rockwell  
 Saunders  
 Wills



Wellford  
 Whitsitt  
 Small  
 Wooten



# SIGMA ALPHA EPSILON

*Tennessee Zeta Chapter*

Founded in 1856

Established at Southwestern in 1882

First Semester		Second Semester
VIRGIL McCRANEY . . .	Eminent Archon . . .	DAN CARRUTHERS
LLOYD PARKER . . .	Eminent Deputy Archon . . .	ROBERT ELDER
DAN CARRUTHERS . . .	Eminent Recorder . . .	ALEC CORTNER
WILLIAM DONELSON . . .	Eminent Treasurer . . .	WILLIAM DONELSON
GEREN BAIRD . . .	Eminent Chronicler . . .	GEREN BAIRD
J. P. CAVENDER . . .	Eminent Warden . . .	HARRY PREST
CLAUDE BROWN . . .	Eminent Herald . . .	GORTON BERRY
WILLIAM BELCHER . . .	Eminent Correspondent . . .	ROBERT QUINDLEY

1940

William Belcher, Dan Carruthers, J. P. Cavender, Alec Cortner, William Donelson, Robert Elder, Newton Jones, Virgil McCraney, John McGrady, Judson McKellar, Lloyd Parker, Jimmy Powell

1941

Gorton Berry, Claude Brown, Bruce Buchman, Rothrock Miller, Harry Prest, Robert Quindley

1942

Geren Baird, Bailey Campbell, John Gibson, Maurice Miller, Starling Reid, Walter Scott

1943

Richard Allen, McNeill Ayres, Lester Baggett, James Collier, Henry Craft, James Hammond, Claude Haverty, Jack Mills, Julian Nall, Henry Rockwell, Tunkie Saunders, William Small, Lewis Wellford, John Whitsitt, William Wills, William Wooten.



Rhem  
     England  
         Jackson  
             Young  
                 Murphy  
 Orto  
     Weiner  
         West  
             Perry  
                 Kier  
 Morgan  
     Beasley  
         Beaumont  
             Kennedy  
                 New  
 Shearon  
     Sparks  
         Webb  
             Alexander  
                 Hilzheim  
 McNees  
     Reid  
         Romine  
             Slusser  
                 Vaccaro  
 Walker  
     M. West  
         Blakemore  
             Hammet  
                 Jones  
 Lockridge  
     Pouncey  
         Andrew  
             Darby  
                 Davis  
 Goodwin  
     Ligon  
         McCrary  
             Malone  
                 Pope  
 Reynolds  
     Seabrook  
         Smith

# KAPPA SIGMA

## *Phi Chapter*

Established in 1869  
Founded at Southwestern in 1882

First Semester		Second Semester
JOHNSON RHEM . . . . .	Grand Master . . . . .	FRANK ENGLAND
FRANK ENGLAND . . . . .	Grand Procurator . . . . .	JOHN YOUNG
WILLIAM MURPHY . . . . .	Grand Master of Ceremonies . . . . .	WILLIAM MURPHY
JOHN YOUNG . . . . .	Grand Scribe . . . . .	CHARLES ORTO
DAN WEST . . . . .	Grand Treasurer . . . . .	RUSSEL WIENER

1940

George Jackson, Cecil New, Charles Perry, Johnson Rhem

1941

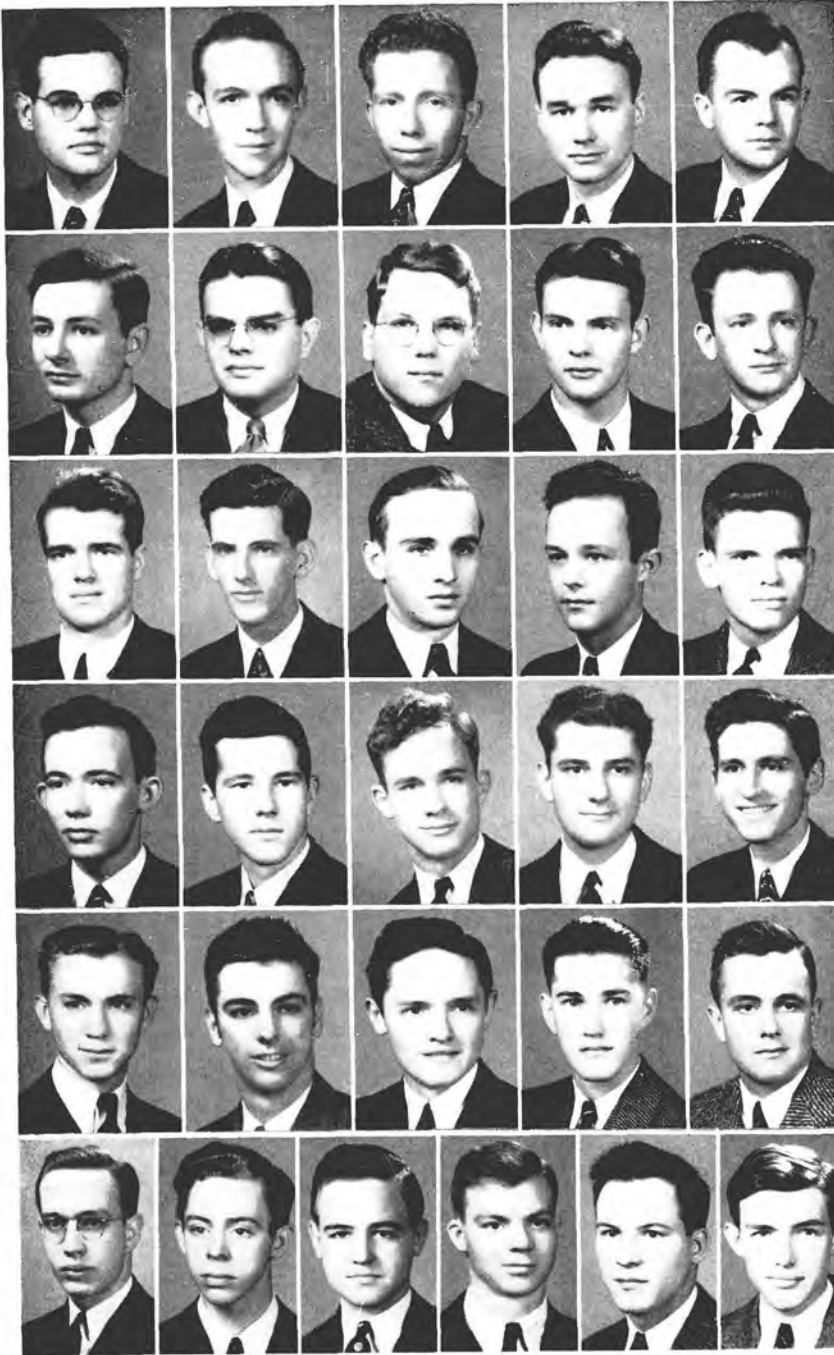
George Blakemore, Frank England, Frank Hammet, Harold Jones, John Kier, Bernard Lockridge, William Morgan, William Murphy, Charles Orto, Baxter Pouncey, John Young

1942

James Allman, James Andrew, Robert Beasley, B. W. Beaumont, William Kennedy, James New, Fred Ross, Elder Shearon, James Sparks, Allen Webb, Dan West, Russel Wiener

1943

Clay Alexander, Jack Darby, Tanner Davis, Boyd Goodwin, Allen Hilzheim, Cheves Ligon, J. C. McNees, Robert McCrary, Clyde Malone, William Pope, Ernest Reid, Eugene Reynolds, Claude Romine, Robert Seabrook, Marion Slusser, Calvin Smith, Eugene Vaccaro, Wesley Walker, Mercer West



Ruffin

McBurney

Hall

Murrah

Brien

Gaither

Broadwater

Moore

Black

Mobley

Nall

Siedentopf

Arnold

Van Downie

Flaniken

Hill

Maybry

Sneed

Albertine

Asquith

Booth

Canale

Fisher

Gordon

Hinson

Klyce

D. Ruffin

Shivers

Tankersley

Turner

Wilgus

# KAPPA ALPHA

*Alpha Epsilon Chapter*

**Founded in 1865**

**Established at Southwestern in 1887**

JAC RUFFIN . . . . .	President
WILLIAM MCBURNEY . . . . .	Vice-President
WALTER HALL . . . . .	Recording Secretary
WILLIAM MURRAH . . . . .	Corresponding Secretary
NEAL BRIEN . . . . .	Historian
CLIFFORD GAITHER . . . . .	Treasurer
GROVER BROADWATER . . . . .	Censor
CHARLTON MOORE . . . . .	Herald
ROBERT BLACK . . . . .	Guard

1940

Neal Brien, Grover Broadwater, Walter Hall, William McBurney

1941

Everett Mobley, Charlton Moore, William Murrah, William Nall, Jac Ruffin, Robert Siedentopf

1942

Harry Arnold, Robert Black, Van Downie, John Flaniken, Clifford Gaither, Harry Hill, William Maybry, Rowlett Sneed

1943

Alec Albertine, Strother Asquith, Jack Booth, D. A. Canale, Sam Fisher, Lloyd Gordon, Malcolm Hinson, Jere Klyce, David Ruffin, Rufus Shivers, William Tankersley, Ford Turner, Walter Wilgus





Worthington  
 Smith  
 Brantley  
 Nesbitt  
 Rhodes



Hull  
 Martin  
 Johnson  
 Morris  
 Gallagher



Buckingham  
 Conn  
 Berryman  
 Buchanan  
 Cochran



Edwards  
 Goostree  
 Kelly  
 Stovall

# SIGMA NU

## *Epsilon Sigma Chapter*

**Founded in 1869**

**Established at Southwestern in 1934**

HERBERT SMITH . . . . .	Eminent Commander
HAYS BRANTLEY . . . . .	Lieutenant Commander
ED NESBITT . . . . .	Recorder
ROBERT RHODES . . . . .	Treasurer
CLAUDE HULL . . . . .	Sentinel
HAYS BRANTLEY . . . . .	Reporter
ED MARTIN . . . . .	Chaplain
BOYCE JOHNSON . . . . .	Marshal

1940

Harry Morris, Herbert Smith, William Worthington

1941

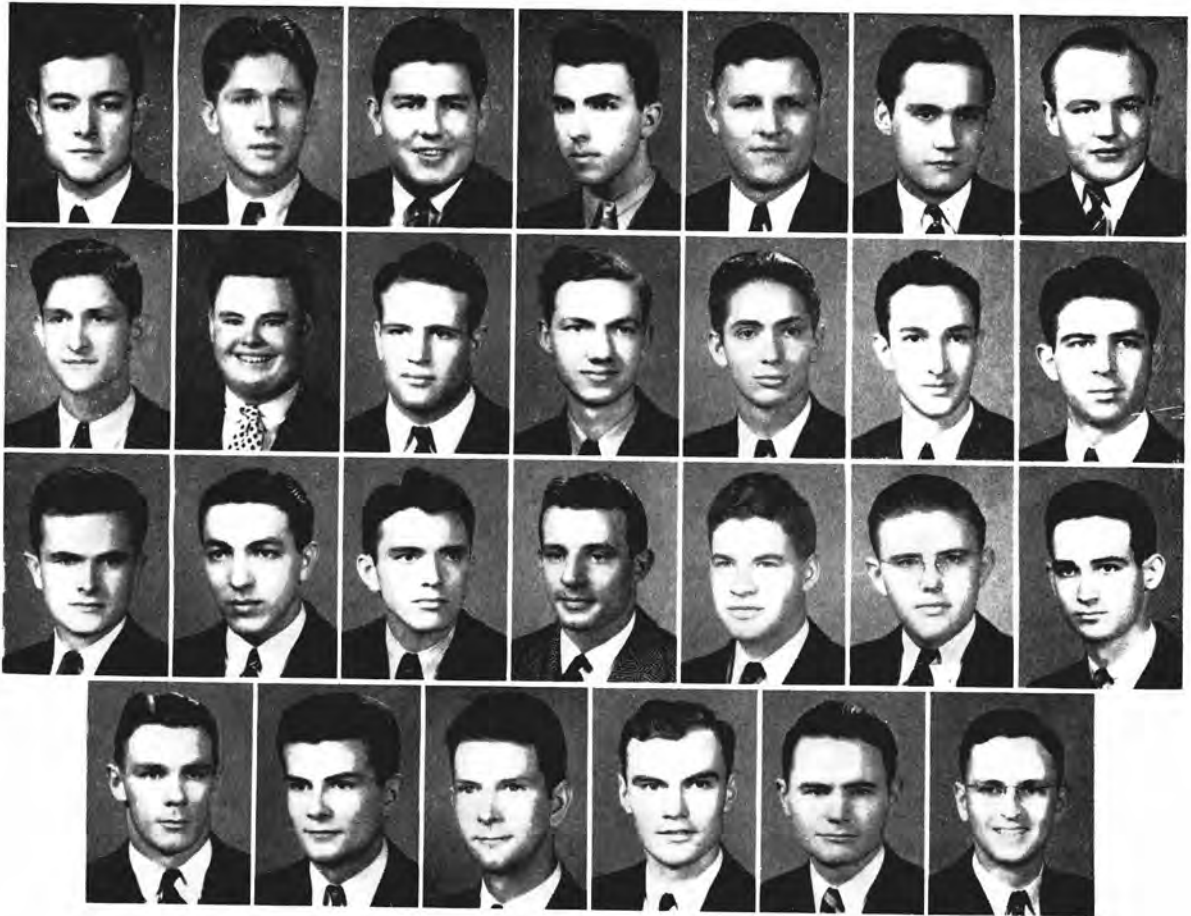
Hays Brantley, Barney Gallagher, Claude Hull, Boyce Johnson, Ed Martin

1942

William Buckingham, Jack Conn, James Holcombe, Ed Nesbitt, Robert Rhodes

1943

Joe Berryman, Ed Buchanan, Cliff Cochran, Charles Edwards, Robert Goostree, Emmett Kelly, Henderson Stovall



# INDEPENDENTS

## OFFICERS

GEORGE EDWARDS (not pictured) . . . . . President  
 TOM DUNCAN . . . . . Vice President  
 ROBERT COGSWELL . . . . . Secretary

## MEMBERS

David Alderman  
 Ralph Alperin  
 Walter Bader  
 Paul Bugg  
 Chester Campbell  
 James Cogswell  
 Hervey Conway  
 Ray Dobbins  
 James W. Edwards  
 Kurt Elias  
 Willis Ensign  
 Arthur Friedman  
 Charles Guthrie

Lawrence Knopp  
 Robert Meacham  
 Irving Orenstein  
 Tom Simpson  
 Robert Smith (not pictured)  
 Robert Stites  
 Jack Wadlington  
 Will Rhea Winfrey  
 John Woolsey  
 Donald Woolsey  
 Campbell Long  
 Campbell Sharp  
 John Summerfield







# NOT PICTURED

## Seniors . . . . .

John William Baird  
Albert Raymond Dawson  
James Guthrie Dougherty  
Hurshel Doyle Fuller  
Louis Kavelaras

Billy King Little  
Wallace Howard Mayton  
David Lawrence Osborn  
John Alden Pond  
Ernest Allen Powell

## Juniors . . . . .

P. T. Barker, Jr.  
William Benson Bobo  
James Bell Campbell  
Anthony Conzoneri  
John Artimus Costello, Jr.  
Allen Horton Craft  
William Wooldridge Dillard, Jr.  
Fred William Drees  
Bertha Feder Flattan  
Thomas Francis Foley  
Carl George Landree  
William Orville McMinn

Enloe Abraham Palmer  
Thomas Nathan Pappas  
Arlie Parker  
Charles Fred Partin  
Henry Nixon Peek  
Amelia Plesofsky  
Robert Paetzel Price  
Saul Siegel  
William Clarence Watson  
Bennett O'Neal Williams  
James Wayman Wood

## Sophomores . . . . .

James Samuel Allman  
Carl Adolph Arnoult  
Leslie Vernon Bailey  
Hugh Goldsby Black, Jr.  
William Curtis Ferriot Bradford  
Charles Meredith Cable  
John Clifford Cast  
Dorothy Irene Daniel  
Herbert Ellsworth Dawson, Jr.  
Robert Bruce De War  
George Riley Edwards

William Patrick Gladney  
Rufus Grant Goodrich  
Hayes George Heaton  
James Vance Holcombe  
Jean Marie McKenney  
Robert Burton Paris  
Bobby Eugene Robinson  
Frances Covington Ruffin  
Walter Atkins Scott, Jr.  
Robert Ashner Udelsohn  
Leon Underwood

## Freshmen . . . . .

William Kirkland Allen  
James Tucker Andrews  
William Andrews Barrett  
Lavern Raymond Bearden  
Walker Guyton Bowen  
Joseph Winston Cocke  
Evelyn Collier Daniel  
Coy Leslie Dyehouse  
Fleet Eugene Edwards  
Roy Edward Fears, Jr.  
Daniel Page Ferguson  
Hannah Feder Flattan  
G. C. Goar  
Dixie G. Griffin  
Winston Watkins Hagood  
George Blodgett Stuart Hale  
James Thomas Hammond, III  
Tommie Jean Haygood

James Conlev Hemmen  
Harriet Elizabeth Hicks  
Robert Cannon Hobson, Jr.  
Thomas Rea Logan  
Helen Charlotte McKnight  
Jerome Bruce Mills  
John Claude Mills  
Frank Hill Pearce  
Elizabeth Marshall Ransom  
Charles Madison Rucker  
Andie Luther Scott  
Lila Elizabeth Sigrest  
Earl Stevenson, Jr.  
James Edward Saltis  
Ramona Loraine Weinstein  
Edwin Craft Wilson  
Fred Carl Wolf, Jr.

ADVERTISEMENTS  
AND  
SNAPSHOTS



■ ■

# VISITORS

ARE CORDIALLY INVITED  
TO SEE AN

## AUTOMOBILE PLANT IN OPERATION

10 A. M. - 2 P. M.  
DAILY EXCEPT  
SATURDAY

FORD MOTOR COMPANY ASSEMBLY PLANT IN MEMPHIS • THE ONLY AUTOMOBILE ASSEMBLY PLANT IN THE MID-SOUTH

## Costumes

For Any Occasion

THEATRICAL—MASQUERADE—FANCY

Wigs, Beards, Masks, Make-Up

TUXEDOS—FULL DRESS SUITS

With All Accessories

GRADUATION CAPS and GOWNS

FLAGS—BANNERS—BADGES

## Memphis Costume & Regalia Co.

232 South Main St.

Memphis, Tenn.

## TYPEWRITERS

ADDING MACHINES—NEW AND REBUILT

Sold—Rented—Repaired

Complete Line—All Makes—Portables

Special Rates to Students

## Doyle Typewriter & Supply Co.

197 Monroe

8-3204

E. B. LeMASTER  
President

L. A. MONTEDONICO  
Vice-Pres.

## H. L. Guion Co.

REAL ESTATE—INSURANCE

For 72 Years

## Our Type "TALKS"

• Your printer can secure the modern typeface service of Kelley & Jamison. For "talking" type and reader appeal, have your advertising composition and job work set in our latest type.

Five Late Model Intertype Machines  
Ludlow Typograph • Thompson Type-caster • Elrod Slug and Rule Caster

## KELLEY & JAMISON TRADE TYPESETTING TYPEFOUNDERS

Phone

5-1689

210 Madison Ave. • Memphis

"Our Every Good Wish For Your Future

Along Life's Highway"

From the Staff of

PETE

## Friedel's

famous drive-in

## RESTAURANT

"May I have the pleasure of continuously serving you in the future as I have in the past?"

PETE FRIEDEL

# OAK HALL

THE SOUTH'S PREFERENCE

for Men and Boys

More than 55 Years

At 55 North Main



Phone 5-2434

## Joyner-Heard Company

REALTORS

LEASES—INVESTMENTS—FARM SALES

INSURANCE—REAL ESTATE LOANS

FARM LOANS

545-550 Commerce Title Bldg. Memphis, Tenn.

Liberal Real Estate Loans

Fire, Automobile and General

Insurance

## Rex Billiard & Supply Co.

18 So. Main St.

Under Bond Clothing Store

SANDWICHES

POCKET BILLIARDS, SNOOKER

BILLIARD SUPPLIES

JOHN TURCOTT

5-9263

## E. H. Crump & Co.

North Memphis Savings Bank Bldg.

6-3683



New York—57 William St.  
Memphis—Hotel Peabody Bldg.

**Oliver P. Cobb & Company**

ACCOUNTANTS AND AUDITORS

OLIVER P. COBB

Certified Public Accountant

Certificates

Tennessee, Mississippi, Arkansas, New York State

---

AUTOMOBILE

FIRE

INSURANCE

**Horace F. Harwell, Jr.**

2701 Sterick Bldg.

Phone 5-1431

Memphis

CASUALTY

BURGLAR

---

TYPEWRITERS AS LOW AS \$34.50

Pay only \$1.00 per week

**Cooper Typewriter Co.**

97 So. Second St.

8-3227

Compliments of

**Anderson, Clayton & Co.**

---

**Success Laundry-Cleaner, Inc.**

1000 Jefferson Ave.

Phone 2-3123

---

Compliments of

**WREC**

E S T A B L I S H E D 1 8 9 7



SCHOOL ANNUALS • SCHEDULES  
COMMENCEMENT INVITATIONS

*Insures Perfect Workmanship*

~~~~~  
No Order is Too Small to Deserve  
CLARKE'S ATTENTION  
~~~~~

E. H. CLARKE & BRO.

19 South Second Street

STATIONERS • PRINTERS • OFFICE OUTFITTERS • ENGRAVERS

"HE SERVES BEST WHO SERVES WELL"

## Walk-Over Shoe Store

"CAMPUS KICKS"

\$5 to \$12.75

45 So. Main St.

Memphis, Tenn.

M. S. LARY, Manager

---

For the Best in Entertainment  
THOSE WHO KNOW . . . GO . . .

### Malco

Where the Parade of Hits Never Ends!

---

### John F. Kimbrough, Jr.

CHICKASAW GARDENS

REALTOR

INSURER

---

### James D. Collier & Co.

INSURANCE

Eighty-one Madison Building

Phones 8-5831 and 8-5832

Memphis, Tenn.

## The Drink Everybody Knows



# I NDIVIDUAL PHOTOGRAPHS

IN THIS ANNUAL MADE BY

Avery R. Stratton

1580 UNION AVENUE

MEMPHIS, TENN.



T  
HANKS TO ALL STUDENTS

FOR THEIR PATRONAGE

"THE HOUSE OF QUALITY FASHIONS"

# LEVY'S

LADIES TOGGERY

MAIN AT UNION

MEMPHIS



Be guided by these GOOD NAMES  
when you buy

### Watches:

Hamilton, Gruen, Elgin, Patek-Philippe,  
Movado, Omega.

### Silverware:

Gorham, International, Towle, Samuel Kirk &  
Son, Reed & Barton, R. Wallace & Sons Mfg.  
Co., Lunt Silversmiths.

### Chinaware:

Wedgwood, Lenox, Royal Doulton, Picard,  
Spode, Rosenthal.

*Selected Diamonds*

## GEO. T. BRODNAX, INC.

One of America's Largest and Finest Jewelers  
MEMPHIS, TENNESSEE

Largest manufacturers school pins and rings South  
Fraternity Jewelry Headquarters  
Engraved Commencement Invitations, Engraved Wedding  
Invitations and Announcements

Eat with Dr. Nick . . .

at the

## SOUTHWESTERN GRILL

The members of  
**The Florist Club of Memphis**

are ethical florists and solicit your  
business on this basis.

**PATRONIZE ANY ONE OF THE FOLLOWING:**

DAVIDSON-JAMES	2-2334
T. G. OWEN & CO.	2-1231
MEMPHIS FLORAL CO.	8-2382
IRBY-HARRIS, FLORISTS	8-3118
JACK JACKSON, FLORIST	2-2323
TRI-STATE FLORAL CO.	2-2164
BUFFA FLOWERS	4-2482
ANNETTE WADE	7-2118
JOHNSON'S GREENHOUSES	8-4118
THE FLOWER BOX	2-1153
BUCHIGNANI, FLORIST	7-3286
LOUISE OGLESBY	2-8137

Insurance Careers Offer Fine  
Opportunities for College Graduates

### Bolling Sibley

*General Agent*

Penn Mutual Life Insurance Co.

Suite 1141 Sterick Bldg.

Phone 5-2757



YOUR DRINK

**PEPSI-COLA**  
TRADE MARK

5 Cents Worth a Dime

**WeOna Food Store No. 2**

You Share in the Profits

Shop WeOna

For Fine Foods at Reasonable Prices

651 North McLean



Sincere Good Wishes to Southwestern  
From the College Man's Store



University of Memphis  
Law School

Facilities for College Work

Rose Warehouse

6 E. Calhoun

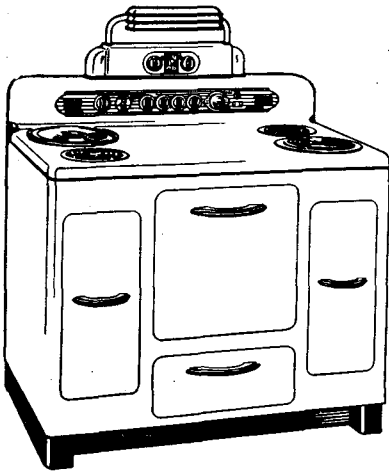
**Belcher Bagging Co.**

Bagging & Ties - Compress Supplies

Memphis, Tennessee

Office  
2904 Sterick Bldg.

Tel. 8-1752  
P. O. Box 499



You'll Get High Honors  
when you GRADUATE to  
**ELECTRIC COOKING**

**The Sheridan**

**Speedy, Dependable, Automatic, Economical**

**ORGILL BROTHERS & CO.**

**MEMPHIS**

**TENNESSEE**



**Smart Southwesterners  
Head for the Cotton Boll!**

Swell Sandwiches  
Dandy Drinks  
Popular Prices

*They all say "It's fun."*

**Fortune's**  
[[ONE OF THE 3]] **Cotton Boll**

**L. G. Balfour Company**  
Fraternity & Sorority Jewelry  
Invitations

**E. B. Benson, Representative**  
Visiting the Campus

2104 Fifth Avenue, North  
Birmingham, Ala.

**CALL ORKIN  
TODAY**

There is no need to tolerate unsanitary conditions in the home. ORKIN will quickly rid your home of insect pests and vermin.



**Call 8-7311**

**NO CHARGE FOR INSPECTIONS AND ESTIMATES**

**Halle-on-Main**



**Betty Coed . . .  
Campus Favorite**

proudly flaunting her smart, young Halle-on-Main fashions-that-cover-the-curriculum, with that "smooth" look, to which Sorority Row is pledged.

**CANOVA COFFEE**

**COMMENCEMENT  
Of Coffee Satisfaction!**



**TRY  
IT!**

**IT SURE IS GOOD COFFEE!**



**B** LUFF CITY ENGRAVING CO. INC.

120 MADISON AVENUE . . . MEMPHIS, TENNESSEE

MASTER MAKERS OF PRINTING PLATES FOR EVERY PURPOSE



Compliments of

## JOHNSON AUTO CO.

Sales—**FORD**—Service

West Memphis, Ark.

Phone 22

Day & Night

For Parties and Picnics . . .

**EAT**



Phone

8-0738

**MRS. DRAKE'S** Quacking Good  
**SANDWICHES**



*Learn* **HOW EASILY** *Earn*  
**YOU CAN ANY ARTICLE YOU WANT**

WATCH

CLASS RING

DIAMOND RING

PHOTO EQUIPMENT  
CAMERA

### THROUGH OUR DIVIDEND PLAN

**We Want Boys and Girls to Help Us**  
By explaining our Customers Dividend Plan to friends and members of their families . . . the awards for new customers secured through your introduction are so liberal that you can easily get a beautiful watch or ring.

#### REMEMBER THIS:

**There is nothing for you to buy!**  
**There is nothing for you to sell!**

Just explain our new plan and give out introduction privilege coupons to identify you. Visit our store! Get the details of this exciting opportunity or address a post card requesting information to J. A. GOODMAN . . . Dividend Department.

## PEREL & LOWENSTEIN JEWELERS

**South's Largest Institution of Its Kind**  
Memphis, Tenn., 144 South Main Street  
Jackson, Tenn., 213 East Main Street

*Memphis . . . .*

A CITY WITH A FUTURE



The future of any city and its surrounding territory depends upon the men and women it raises up to direct it.

We, Memphis Food Brokers, are confident of the continued prosperity and well being of our section because we know that SOUTHWESTERN is today training its leaders of tomorrow.

These Food Brokers compliment Southwestern on its service to Memphis.

- ★ **Carver & Griffith**
- ★ **Connors Brokerage Co.**
- ★ **M. B. McGee Brokerage Co.**
- ★ **McKnight & Patten**
- ★ **R. D. Michie Brokerage**
- ★ **Jacob Peres & Co.**
- ★ **Ervin J. Seeman Co.**
- ★ **Donelson & Poston**
- ★ **Forrest & Wilson**



**Twosome,  
Foursome . . .  
or the Whole Gang!**

**Sandwiches—Sodas—Popular Prices**

One of their 3 favorite rendezvous is Fortune's  
Belvedere for good food, good drinks,  
good fun!

**Fortune's**  
[ONE OF THE 3] **Belvedere**  
FORTUNES]

Compliments of  
**Guaranty Mortgage & Trust**  
Mortgage Loans  
and  
**Metcalf Bros.**  
Guaranty Ins. Agency  
Fire and Casualty Insurance

Compliments of

**BOND**  
CLOTHES

20 S. Main St.

**PHIL A. HALLE**

Exchange Building



Recognized as

the South's Style Creating Clothiers, Haberdashers, Hatters,  
Booterers, and Custom Shirt Makers by Particular  
University Men and Women.

*Compliments*

*of*

**A FRIEND**





# SOUTHWESTERN

## MEMPHIS, TENNESSEE

---

A Standard College of Arts and Sciences  
A College of High Ideals and Personal Attention

---

The greatest thing about a college is the character and ability of its instructors. A grateful pride is felt in the faculty of Southwestern. The greatest care has been used in the selection of these men. They are all Christian men of sound scholarship and they are great teachers.

The architecture is of the collegiate Gothic type and the plant is entirely modern, beautiful and enduring.

Nothing has been spared that contributes to the highest good and efficiency of the individual student, and as a result Southwestern offers unusual advantages.

PRINTED AND BOUND  
BY  
E. H. CLARKE & BRO.  
MEMPHIS



