

THE LYNX



1945

THE LYNX



1944-45

EDITOR FRANCES S. UHLHORN
ASS'T. EDITOR JUNE CRUTCHFIELD
BUSINESS MGR. KITTY GREY PHARR

THE

LYNX



CLASSES



ORGANIZATIONS



BEAUTIES

1944-45

PRESENTS



BASKET BALL



FRATERNITIES



SORORITIES



THE TOWER



THE SCIENCE BUILDING



THE GIRLS DORMITORY



SCIENCE BUILDING ARCH

In Thanks and Appreciation to
MR. JOHN OSMAN

for his faith in higher learning and for his
efforts in furthering that faith through
the symposium







To the Class of 1945:

This terrible World War has worked havoc with the graduating classes of colleges which enroll men students. What with the volunteering, the drafting of the eighteen year olds, and the accelerated program, it is impossible to maintain a semblance of the measured stride of the accustomed four-year pilgrimage.

This fact is well illustrated by the record of this Class of 1945, which enrolled one hundred and thirty-three members in September, 1941. Some of these took advantage of the accelerated program; fifty-seven that we know about are in the armed services, two have been wounded in action, and one is a prisoner of war in Germany. Not many of those entering in 1941 are to receive their diplomas in June, and there is left only one lone male in this entire graduating group.

Our interest and our greetings extend to every member of this Class, whether graduating now or not, whether in this country or abroad. Each one is a center of our loyal interest and our affectionate regard. It is our earnest hope that the lights may soon come on again for all of us, that, because we have a right sense of values and are true to our Christian ideals, our lives will be characterized by depth as well as breadth, and will reveal in increasing measure the quality of the Eternal.

Phox & Kiehl



CHARLES E. DIEHL, A.M., D.D., LL.D.
President

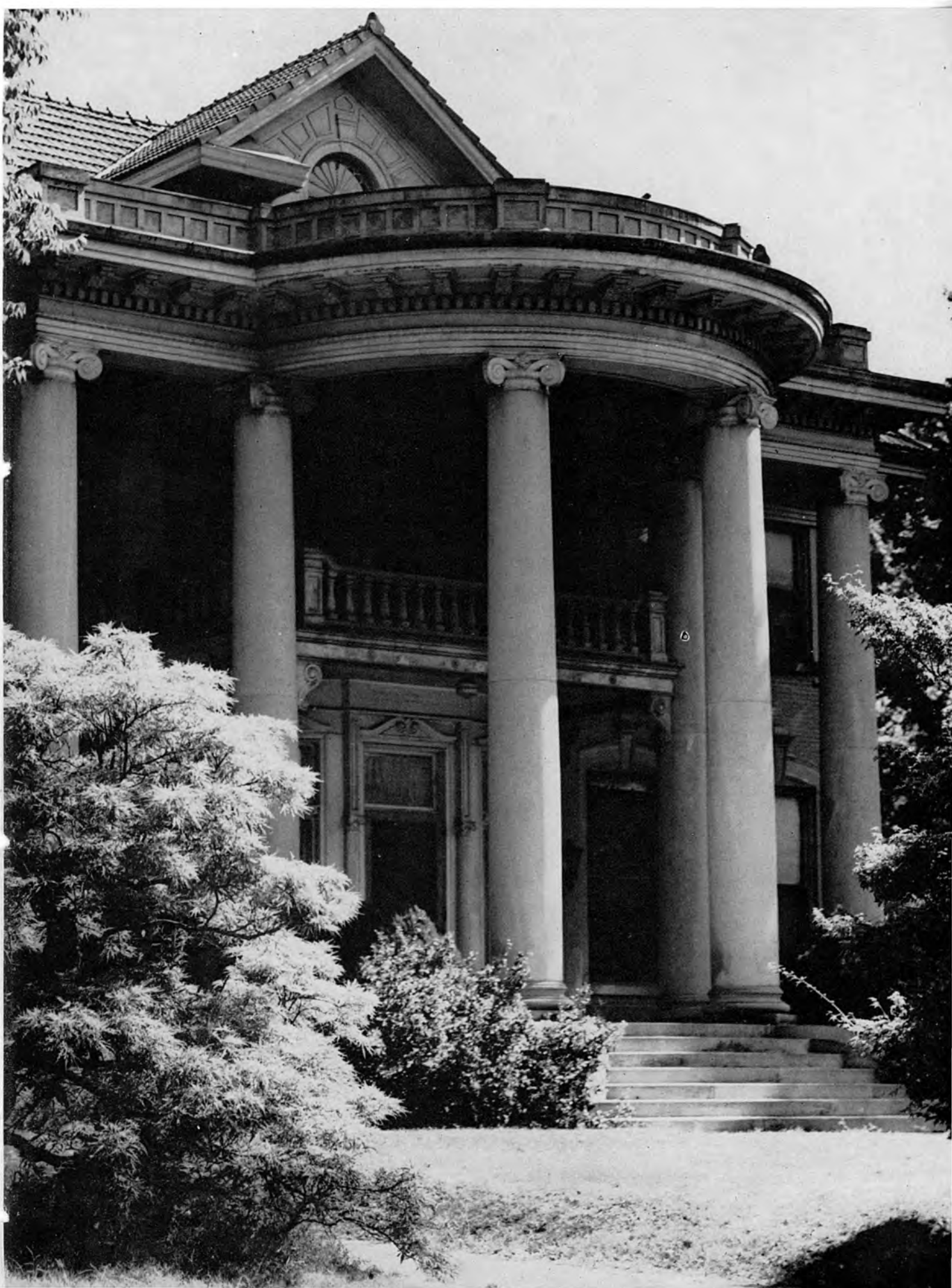
MEMPHIS COLLEGE OF MUSIC

The Music Department of Southwestern

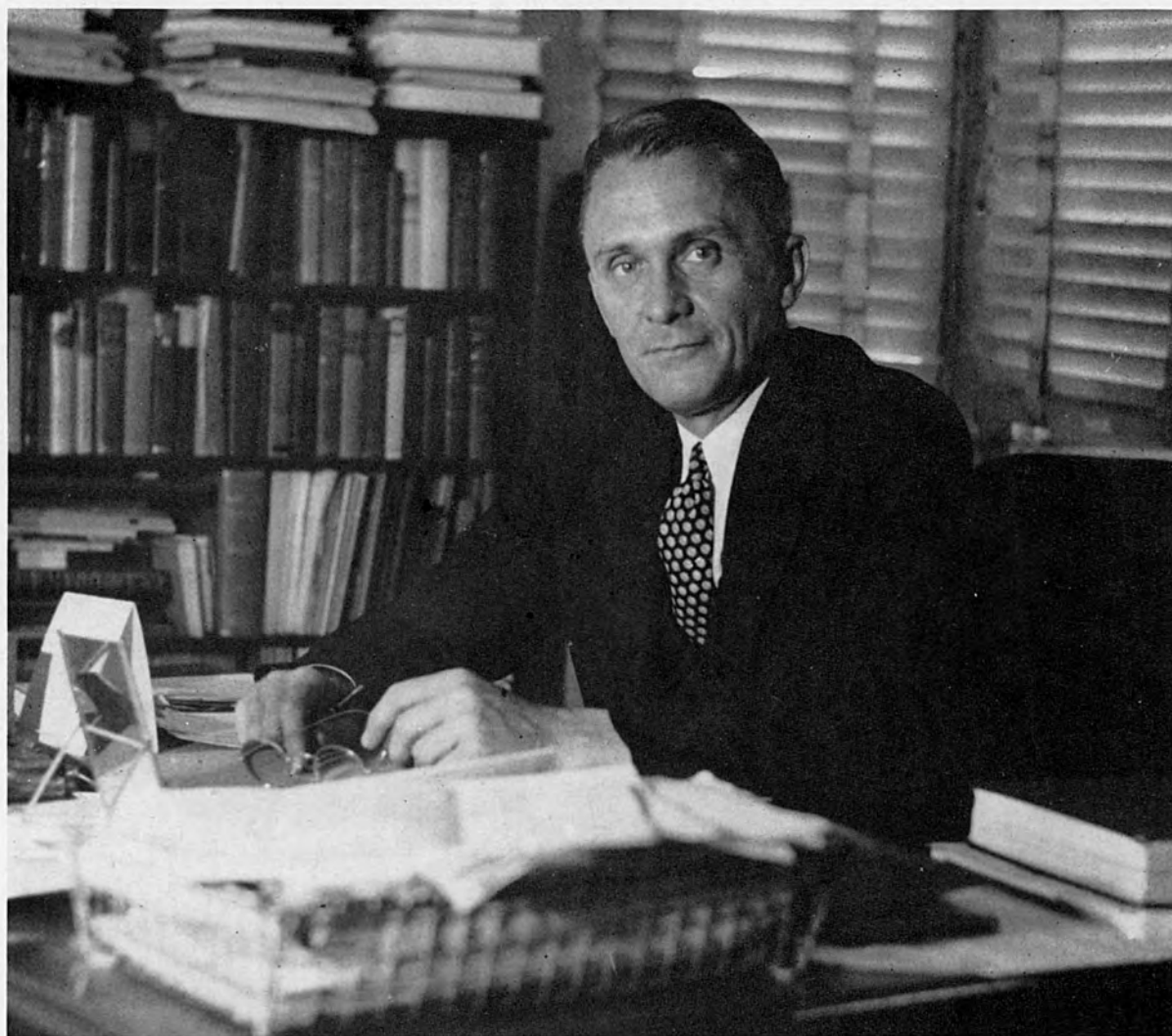
The Memphis College of Music offers training of the highest standards in all phases and grades of musical activity. Accepting beginners of all ages, it carries their studies through intermediate and college work leading to the degrees of Bachelor of Music and Bachelor of Arts with a major in music, which degrees are conferred by SOUTHWESTERN. Its work is recognized and accredited by the State of Tennessee and by full membership in the National Association of Schools of Music. SOUTHWESTERN is fully accredited, since it is a member of the Southern Association of Colleges and Secondary Schools and is on the approved list of the Association of American Universities.

THE FACULTY

- CHARLES EDWARD DIEHL, A.M., D.D., LL.D.**
(A.B., Johns Hopkins University; Graduate of Princeton Theological Seminary; A.M., Princeton University)
President of SOUTHWESTERN
- BURNET CORWIN TUTHILL, A.M., M.Mus., MUS. DOC.**
(A.B. and A.M., Columbia University; M.Mus., College of Music of Cincinnati)
Director
- PIANO**
- GLADYS CAUTHEN**
(Pupil of Theodor Bohlmann, Mrs. E. T. Tobey, William H. Sherwood and Ernest Hutcheson, President, Memphis College of Music, 1933-1943)
Dean, Music Faculty
- IALEEN T. DUNNING, B. Mus.**
(B.Mus. American Conservatory, pupil of Theodor Bohlmann, Silvio Scionti and Mrs. Carre Louise Dunning—Dunning System)
- LOIS MAER**
(Graduate, Bolling-Musser School of Music; pupil of Sigismund Stojowski and Rudolph Ganz; now director of piano teaching in Miss Hutchison's School)
- ELIZABETH MOSBY**
(Graduate, Chicago Musical College; Student at Columbia University and Washington University; pupil of Xaver Scharwenka, Raphael Josefy, Theodor Bohlmann and August Fraemke; now director of piano teaching in St. Mary's School)
- MYRON MYERS, B. Ed. M.Mus.**
(B. Ed., Milwaukee State Teachers College; M. Mus., University of Michigan; pupil of Joseph Brinkman and Artur Schnabel)
- GRACE M. PEEL, B. Mus.**
(B. Mus., Chicago Musical College; pupil of Percy Grainger and Moissaye Boguslawski)
- MAUDE WALKER**
(Student at Institute of Musical Art in New York and Teacher's College, Columbia University and at Washington University; pupil of Henrietta Michelson; now director of piano teaching at Pentecost-Garrison School)
- VIRGINIA LOWERY, B.M., M.Mus.**
(B. Mus., Memphis College of Music; M. Mus., University of Michigan; pupil of Myron Myers, Joseph Brinkman and Artur Schnabel)
- MINNIE J. BERNSTEIN, B.M.**
(B. Mus., Memphis College of Music; pupil of Myron Myers)
- GERTRUDE M. DOWD, B.M.**
(B. Mus., Memphis College of Music; pupil of Lois Maer)
- VOICE**
- CLARE ELBY**
(Pupil of Frida Ashforth, Leontine de Ahna, Inez Barbour Hadley and Edyth Walker; in piano of Raphael Josefy and Theodore Leschetizky)
- BESS PORTWOOD, B. Mus.**
(B. Mus., American Conservatory; pupil of Louise Robyn, Elaine de Sellem and Noble Cain)
- VIRGINIA MORENO SLEDGE**
(Graduate, Institute of Musical Art, Juilliard School of Music; pupil of Mrs. Theodore Toedt, Romano Romani, Stephen Townsend, Florence Lamont Hinman, and at the Clifton Cook School, London, England. Piano student of Myron Myers).
- VIOLIN**
- NOEL GILBERT**
(Pupil of Joseph Henkel and Scipione Guidi; concertmaster, Memphis Symphony Orchestra)
- FLORENCE KNOX, B.S.**
(B.S., Institute of Musical Art of the Juilliard School of Music; pupil of Edouard Dethier; Assistant concertmaster, Memphis Symphony Orchestra)
- RUTH WOOD TUTHILL, A.B., B.Mus.**
(A.B., Western College, Oxford, O.; B. Mus., Cincinnati Conservatory of Music; pupil of Robert Perutz; solo viola, Memphis Symphony Orchestra)
- VIOLONCELLO**
- FRANCIS A. WOLFE**
(Pupil of Karl Kirksmith, Cincinnati Conservatory of Music; member of Cincinnati Symphony Orchestra; Solo violoncello, Memphis Symphony Orchestra)
- VEDA COLEMAN, B.S.**
(B.S., Western Kentucky State College; member, Memphis Symphony Orchestra)
- ORGAN**
- ADOLPH STEUTERMAN, F.A.G.O.**
(Pupil of Dr. T. Tertius Noble, Dr. William C. Carl and Charles Galloway; organist, Calvary Episcopal Church, Memphis)
- HARP**
- ANGELO CORTESE**
(Pupil of Tramonti in Chicago and of A. Hasselmanns at the Paris Conservatoire; many years as harp soloist on tour)
- FLUTE**
- ANNE T. REYNOLDS, A.B., B.Mus.**
(A.B., SOUTHWESTERN; B.M., Memphis College of Music; flute pupil of Ary van Leeuwen, Edwin Lennig and Laurent Torno; solo flute, Memphis Symphony)
- CLARINET**
- BURNET CORWIN TUTHILL, A.M., M.Mus., Mus.Doc.**
(Formerly solo clarinet Young Men's Symphony, N. Y., Cincinnati Little Symphony)
- BASSOON**
- HENRY HAND**
(Solo bassoon, Memphis Symphony Orchestra)
- HORN**
- M. E. HINDS**
(Solo horn, Memphis Symphony Orchestra)
- TRUMPET**
- LESTER BRUCH**
(Trumpet, Memphis Symphony Orchestra)
- TROMBONE**
- HERBERT C. GINN**
(Solo trombone, Memphis Symphony Orchestra)
- PERCUSSION**
- ROGERS DALTON**
(Tympanist, Memphis Symphony Orchestra)
- ACCOMPANIST**
- GRACE W. McLAIN**



THE DEANS



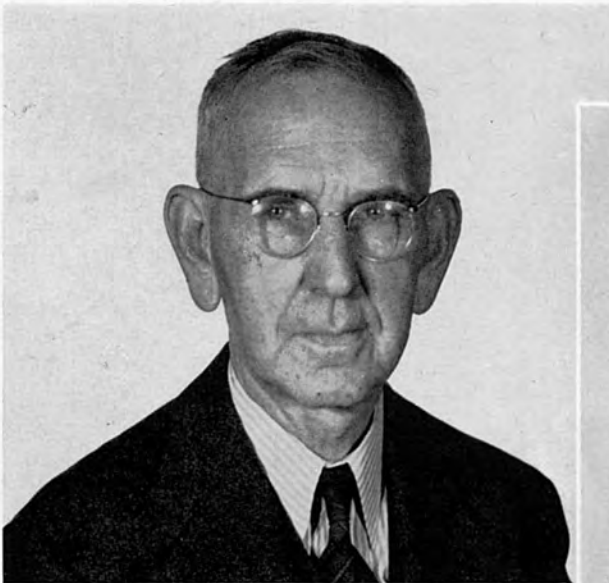
A. THEODORE JOHNSON, A.M., Ph.D.
Dean
Professor of English



WILLIAM RAYMOND COOPER, A.M., LL.B.
Dean of Men
Professor of History



MARGARET HUXTABLE TOWNSEND, M.A.
Dean of Women
Associate Professor of Sociology



ROBERT S. POND, A.M., Ph.D.
Dean of Freshmen
Professor of Mathematics



HELEN GORDON, M.A., B.A.
Assistant Dean of Women

FACULTY



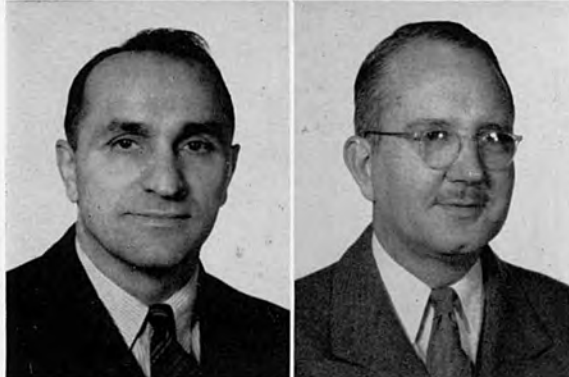
DAVID M. AMACKER, M.A.
A.B., Princeton University; B.A. and M.A., Oxford University
Professor of Political Science

WILLIAM R. ATKINSON, A.M., Ph.D.
B.S., George Peabody College; A.M., Columbia University; Ph.D., George Peabody College
Professor of Psychology and Education



CLINTON L. BAKER, M.S., Ph.D.
B.S. and M.S., Emory University; Ph.D., Columbia University
Associate Professor of Biology

HENRY J. BASSETT, Ph.D.
A.B., Maryville College; A.B., Princeton University; Ph.D., University of Michigan.
Professor of Latin



AL CLEMENS, B.A.
B.A., University of Alabama.
Director of Physical Education and Athletics

JOHN H. DAVIS, M.A., Ph.D.
A.B., University of Kentucky; B.A., and M.A., Oxford University; Ph.D., University of Chicago.
Professor of History
The J. J. McComb Chair



MRS. C. J. FARQUHARSON
B.A., Southwestern College
Assistant Director of Physical Education

ROBERT W. HARTLEY, Ph.D.
A.B., University of Utah; B.A., Oxford University; Ph.D., University of Pennsylvania.
Professor of Mathematics

FACULTY

ALEXANDER P. KELSO, B.D., M.A., D.D.
 A.B., Washington and Jefferson College; B.D., Western Theological Seminary; B.Sc. (Ethics) and M.A. (Theology), Oxford University.
 Professor of Philosophy and Christian Ethics
 The R. A. Webb Chair

LAURENCE F. KINNEY, A.M., Ph.D.
 A.B., Hampden-Sydney College; B.D., Union Theological Seminary (Virginia); A.M. and Ph.D., University of Virginia.
 Professor of Bible
 The Albert Bruce Curry Chair

LOUIS G. LOCKE, A.M., Ph.D.
 A.B., Bridgewater College; A.M., George Washington University; A.M. and Ph.D., Harvard University
 Associate Professor of English

MARION LEIGH MacQUEEN, A.M., Ph.D.
 A.B., Southwestern; A.M., University of Wisconsin; Ph.D., University of Chicago
 Professor of Mathematics

VIRGINIA MORENO, A.M.
 A.B., Stanford University; A.M., Middlebury College;
 Assistant Professor of Spanish

JOHN OSMAN, A.M., B.D., Th.M.
 A.B., Presbyterian College; A.M., University of Richmond; B.D. and Th.M., Union Theological Seminary, Virginia
 Assistant Professor of Philosophy

PEYTON NALLE RHODES, A.M., Ph.D.
 A.B., A.M., and Ph.D., University of Virginia
 Professor of Physics

MARTIN W. STORN, A.M., Ph.D.
 A.B., Wartburg College; A.M., University of Washington; Ph.D., University of Illinois
 Professor of Romance Languages



FACULTY



ROBERT P. STRICKLER, Ph.D.
A.B., West Virginia University; 1907-1910 Oxford University; Ph.D., Johns Hopkins University
Professor of Greek

GEORGE F. TOTTEN, A.M.
A.B., Wayne University; A.M., University of Michigan;
Assistant Professor of Speech and Dramatics



CHARLES LOUIS TOWNSEND, A.M., Ph.D.
B.A., McGill University; A.M. and Ph.D. Harvard University
Professor of Modern Languages

BURNET C. TUTHILL, A.M., M.Mus., Mus.D.
A.B. and A.M., Columbia University; M.Mus., College of Music of Cincinnati
Director of Music



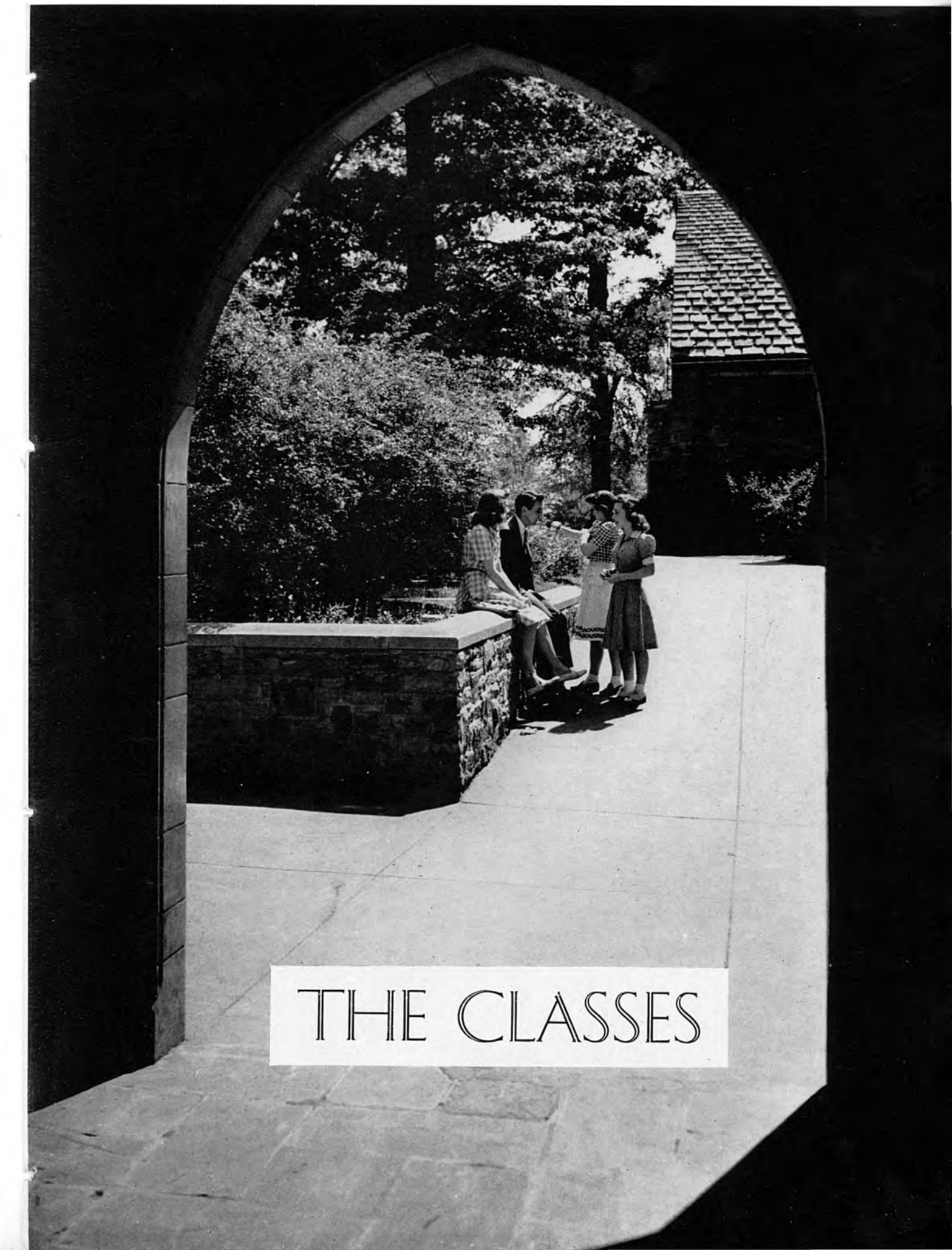
RAYMOND T. VAUGHN, A.M.
A.B., Culver-Stockton College; A.M., University of Missouri
Assistant Professor of Chemistry and Physics

FELIX M. WASSERMAN, Ph.D.
Student at Universities of Heidelberg and Munich
Ph.D., University of Freiburg
Assistant Professor of Geography and Modern Languages



JOHN Q. WOLF, JR., A.M.
A.B., Arkansas College; A.M., Vanderbilt University of English
Assistant Professor of English

C. L. SPRINGFIELD
Bursar



THE CLASSES

SENIOR CLASS





OFFICERS

PRESIDENT BETTY JEAN WILKINSON
VICE-PRES. JANE MILNER
SEC.-TREAS JOY GALLIMORE

SENIORS

Anne Howard Bailey
Memphis, Tenn.

Kappa Delta Editor 2, Treasurer, Vice-Pres. 4, Pledge Scholarship Award 1; Honor Scholarship 4 yrs.; Alpha Theta Phi Freshman Scholarship Award; Delta Delta Delta Freshman Scholarship Award; Winner Stylus Cup; Co-Author and Director April Fool Carnival 3 and 4; President Stylus Club 3; Y. W. C. A. 4 yrs.; President Alpha Theta Phi 4; President Southwestern Players 4; Editor of Lynx 3; Editor of Southwestern Journal 3; Vice-President of WAA 3; Lynx Staff 1, 2, 3; Sou'wester Staff; Student Council 3, 4; Torch 4; Who's Who in American Colleges and Universities; Nitist Club; Captain KD Basketball Team 2 yrs.; Member of Student-Faculty Activities Board; Candidate for Distinction in Philosophy.

Beverly Barron
Memphis, Tenn.

AOPi, Recording Secretary 4; Member of Y. W. C. A. 1, 2, 3, 4; Southwestern Literary Staff, 1, 2, 3, 4; Senior Representative of Publications Board 4.

Ginny Crutcher
Henning, Tennessee

Transfer from Stephens College, Columbia, Mo.; Sec.-Treas. Student Body 4; Chi Omega 3, 4; Personnel Chairman 4; Sou'wester Staff 4; Pi Intersorority 4; Student Council 4; Y. W. C. A. 3, 4; Co-Author-Director April Fool Carnival 4; Candidate for distinction in psychology.

Virginia Emmons
Memphis, Tenn.

Transfer from the University of Tenn.; Zeta Tau Alpha 2, Conductor 3; Historian 4.



Mary Ann Banning
Memphis, Tenn.

Chi Omega, Model Initiate, Chapter correspondent 2, vice-president 3, president 4; Panhellenic Council 3, 4, president 4; Secretary-Treasurer Junior Class 3; Spanish Club 1, 2; S. T. A. B., 1, 2, 3, 4; vice-president 4; Y. W. C. A. 1, 2, 3, 4; Canterbury Club 1, 2, 3, 4; Sou'wester Staff 1, 2; Lynx Staff 2, 3; Who's Who in American Colleges and Universities; President of Student Body 4; Student Counsellor 4.



Lee Conley
Memphis, Tenn.

Kappa Delta; Choir 1, 2, 3, 4; Spanish Club 4; Stylus 2, 3, 4; Secretary-Treasurer Stylus 3, 4; Y. W. C. A. 1, 2, 3, 4.



Gene Dickson
Memphis, Tenn.

Delta Delta Delta, Pledge President 1; Publicity Chairman 2; Social Chairman 3; Chaplain 4; Pi Intersorority 1, 2, 3, 4; Chapel Pianist 1, 2, 3, 4; Y. W. C. A. 1, 2, 3, 4; Southwestern Singers, Secretary-Treasurer 3; President 4; Canterbury Club 1, 2; Healers 3, 4; Vice-President of WAA; Torch; Honor Council 4; Who's Who Among Students in American Colleges and Universities.



Betty Ezell
Monroe, Louisiana

Torch 4; Alpha Theta Phi Secretary 4; Y. W. C. A. Cabinet 2, 4; Honor Council 4; Elections Commissions 4; Women's Dormitories Governing Board Secretary 4; Student Counsellor 4; Who's Who in American Colleges and Universities 4; Sou'wester Staff; Franco-German Club 1, 2; Secretary of Independent Women 2; Candidate for degree with distinction 4.

SENIORS

Marguerite Field

Memphis, Tenn.

Delta Delta Delta; Transfer from Maryville College; Heelers 3; Lynx Staff 3; Stylus 4.



Joy Jeanne Gallimore

Greenfield, Tenn.

Zeta Pledge Treas. 1; Y. W. C. A. 4; Franco-German Club 1; Zeta Sec. 3; Zeta President 4; S. T. A. B. Sec. 3; S. T. A. B. Pres. 4; Pres. Spanish Club 3; Sec. Spanish Club 4; President Junior Class; Beauty Section, Lynx 2; Sec. Elections Commission 4; Women's Panhellenic 3, 4; Sec. Women's Panhellenic 4; Honor Council 4; Student Council 3; Student Counsellor 4; Sec.-Treas. Senior Class; S. O. S. (Service Organization of Southwestern); Who's Who among students in American Universities and Colleges.

Anita Hyde

Memphis, Tenn.

Delta Delta Delta, Rush Chairman 2, Recording Secretary 3, 4, War Service Projects Chairman 3; Spanish Club 2; Sou'wester Staff 1, 2, 3; Lynx Staff 2, 3; S. O. S. 3; Canterbury Club 3, 4; Y.W.C.A. 1, 2, 3, 4; Y. W. C. A. Cabinet 3, 4; Y. W. C. A. President 4; Christian Union Cabinet 4; Torch 4; Student Council 4; Student Counsellor Secretary; Women's Undergraduate Governing Board 4; Who's Who Among Students in American Colleges and Universities; Student Welfare Committee.



Elizabeth Jetter

Memphis, Tenn.

Choir 1, 2; Indep. Women 3, 4; Memphis Symphony Orchestra 3, 4; Y. W. C. A. 1, 2.

Sally Johnston

Memphis, Tenn.

Vice-President, Rushing Chairman and Corresponding Secretary, Zeta Tau Alpha; Member, Women's Panhellenic; (Heeler) Southwestern Players (will be tapped next time); Lynx and Sou'wester Staff 2, 3; Y. W. C. A.; Canterbury Club; Franco-German Club.



Estelle Kuhlman

Memphis, Tenn.

Y. W. C. A. 1, 2, 3, 4; Choir 1, 2; Kappa Delta; Sergeant-at-Arms 4.

Margaret Wilson Lamp

Clarksville, Tenn.



Mary Frances Lynch

Collierville, Tenn.

Delta Delta Delta, Historian and Chaplain 2, Treasurer 3, Chapter Recorder 4; Christian Union Cabinet 4; Spanish Club 1, 2; Y. W. C. A. 1, 2, 3, 4; Publication Board 3; Heeler 2, 3; Canterbury Club, Program Chairman 3; Chi Omega Sociology Award 3; Honor Scholarship 1, 2, 3, 4; Candidate for Distinction in Mathematics.

SENIORS

Donald MacGuire
Montgomery, Ala.

Independent Men, vice president 2, president 3, 4; Heavy weight wrestling champion 1; Intra-mural Athletic Association 2; Southwestern Singers 2, 3; Nitist Club 2; Ministerial Club 2, 3, 4, Pres. 3, vice president 4; Christian Union Cabinet 3, 4, vice pres. 3, 4; Honor Council 3; Religious Life Committee 3, 4; Student Welfare Committee 4; Student Counsellor 4; Southwestern Players 4; Who's Who in American Colleges and Universities.



Jane Milner

Clemson, South Carolina
Delta Delta Delta, 1, 2, 3, 4, vice-president of pledges 1, Best Pledge 1, House Manager 2, Marshal and Panhellenic Representative 3. President 4; Christian Union Cabinet 1, 2, 3, 4, President 4; Pi Intersorority 1, 2, 3, 4, Vice-President 4; Sou'wester Staff 1, 2, 3, 4, Feature Writer 3, 4; Lynx Staff 1, 2, 3, Business Manager 3; Torch 4, Secretary; Stylus Club 3, 4; Southwestern Players 4; Alpha Theta Phi 4; Student Counsellor 4; Student Council 4; Delta Delta Delta Basketball team 1, 2, 3, 4; Canterbury Club 1, 2, 3; Vice-President Senior Class; Dean's List 1, 2, 3, 4; Women's Panhellenic Council 3, 4, treasurer, 4; Women's Undergraduate Society 4; Religious Life Committee 4; Franco-German Club 2; Psychology Assistant 3; Who's Who in American Colleges and Universities 4; Candidate for Honors in English.

Louise Moran
Dresden, Tenn.

Chi Omega 3, 4; Pres. Women's Undergraduate Board 4; Vice-Pres. Torch 4; Member of Student Council 4; Member of Honor Council 2, 3; Member of Women's Dormitory Governing Board 2, 3; Y. W. C. A. 1, 2, 3, 4; S. T. A. B. 1, 2, 3, 4; Candidate for distinction in sociology.



Emily Morgan
Coahoma, Miss.

Zeta Tau Alpha, Rush Chairman 2, Secretary 3, Vice-President 4; Spanish Club; Elections Commission; Y. W. C. A. Cabinet; Canterbury Club; Franco-German Club; Sou'wester Staff.

Mignon Presley
Memphis, Tenn.

Y.W.C.A. 1, 2, 3, 4; Canterbury Club 3; Sou'wester 1, 2, 3, 4; Stylus 2, 3, 4; Spanish Club 4; Southwestern Singers 1, 2, 3; co-editor of Journal 2.



Minor Robertson
Memphis, Tenn.

Y. W. C. A. 2, 3, 4; Basketball 2, 3; Canterbury Club 2.

Josephine Schillig
Leland, Miss.

Vice-Pres. Chi Omega 4; Choir 3, 4; Y. W. C. A. 3, 4; Stylus 3, 4; Elections Commission 4.



Dorothy Schrodt
Memphis, Tenn.

SENIORS

Sylvia Shankman
Memphis, Tennessee



Alice Hoge Siviter
Mt. Pleasant, Tennessee
Zeta Tau Alpha Guard 2; Franco-German Club 1, 2; Y. W. C. A. 1, 2, 3, 4.



Eunice Jane Soderstrom
Memphis, Tenn.

Zeta Tau Alpha, Scholarship, Chairman of Pledges 1, Historian 2, Rush Chairman 3, Assistant Treasurer 4, Music Chairman; Y. W. C. A. 1, 2, 3, 4; Spanish Club 3; Honor Council 4; Southwestern Singers Accompanist 1, 2, 3, 4; Tied for third honors in Sophomore Class; Candidate for Honors in Music; Senior Class Correspondent.



Frances Stockley Uhlhorn
Memphis, Tenn.

Transfer from Randolph-Macon Women's College; AOPi Rush Captain 2; Panhellenic Representative 3, President 4; Woman's Panhellenic 3, Vice-president 4; Member of Canterbury Club 3, 4; Member of Y. W. C. A. 2, 3, 4; Member of Southwestern Staff 3, 4; Member of Lynx Staff 3, Editor of Lynx 5; AOPi Basketball Team 2, 3, 4; Member of Student Council 4; Member of Pi Intersorority 3, 4; Spring Carnival Cast 4.



Ann James Weldon
Memphis, Tenn.

Delta Delta Delta Treas. 2, Corresponding Secretary 3, Vice-Pres. 4; Y. W. C. A. 1, 2, 3, 4; Sou'wester Staff 1; Heelers 1; Spanish Club 2; French Club 1; Service Organizations of Southwestern, Pres. 3.



Betty Jean Wilkinson
Memphis, Tenn.

Delta Delta Delta, Scholarship Chairman 1, Corresponding Secretary 2, Vice-president 3; Treasurer 4; S. T. A. B. Secretary-Treasurer 4; Senior Class President 4; Junior Class Vice-President 3; Torch, President 4; Student Council 4; Alpha Theta Phi, Vice-President 4; Student Counsellor 4; Southwestern Singers 1, 2, 3, 4; Y. W. C. A. 1, 2, 3, 4; Women's Undergraduate Governing Board 4; Spanish Club 1, 2; Sou'wester Staff 2, 3; Second Place in Scholarship 2; Lynx Staff 4; Heelers 3; Who's Who Among Students in American Colleges and Universities.



Imogene Williamson
Mason, Tennessee

Kappa Delta, Pres. of Pledges 1, Best Pledge, Junior Panhellenic Representative, 3, President 4, Vice-President 3; Sergeant at Arms 2; Sec.-Treas. of Sophomore Class 2; President of Women's Panhellenic 4; President of Women's Governing Board 4; Sec.-Treas. of Women's Undergraduate Society 4; Member of Student Council 4; Who's Who in American Colleges and Universities 4; Member of Players 4; Member of Choir 1, 2; Member of Canterbury Club 1, 2, 3, 4; Member Y. W. C. A. 1, 2, 3, 4; Pi Intersorority 3, 4; Library Assistant 1, 2, 3.



Marianna Petrie Woodson
Hot Springs, Ark.

Delta Delta Delta 1, 2, 3, 4, Social chairman 2, Chaplain 3, Corresponding Secretary 4; Candidate for distinction in Math; Library Assistant 1; Biology Lab Assistant 3; Y. W. C. A. 1, 2, 3, 4; Heelers 1, 2; Franco-German Club 1, 2.



JUNIOR CLASS





CLASS OFFICERS

PRESIDENT	JANE BIGGER
VICE-PRESIDENT	JUNE CRUTCHFIELD
SECRETARY-TREASURER	PAUL BARRETT

JUNIORS



MARY LOU ALMEDA Memphis, Tennessee
Delta Delta Delta



PAUL BARRET Kerrville, Tennessee
Sigma Alpha Epsilon



SARAH WHITE BARTH Memphis, Tennessee
Delta Delta Delta



BETTY BELK Williamsburg, Virginia
Kappa Delta



JANE BIGGER Memphis, Tennessee
Alpha Omicron Pi



ANN BRADSHAW Memphis, Tennessee
Alpha Omicron Pi



WARRENE BUFORD Tallulah, Louisiana
Delta Delta Delta



WILLIAM BULLOCK Memphis, Tennessee
Kappa Sigma



DOROTHY CHAUNCEY Memphis, Tennessee
Delta Delta Delta



MAY CHRISTIE Memphis, Tennessee

JUNIORS

NANCY CONN Memphis, Tennessee
Alpha Omicron Pi

JULIA ANNE CRUTCHFIELD Memphis, Tennessee
Delta Delta Delta

REZNEAT DARNELL Memphis, Tennessee

ED DEWEY Memphis, Tennessee
Sigma Alpha Epsilon

ILSE EINSTEIN New York, New York

GARNET FIELD Memphis, Tennessee
Delta Delta Delta

LUCY LEE GANIER Memphis, Tennessee
Delta Delta Delta

LUCY GERALD Leland, Mississippi
Kappa Delta

VIRGINIA GIBBINS Shreveport, Louisiana
Zeta Tau Alpha

MARIE GOOCH Memphis, Tennessee
Chi Omega



JUNIORS



JACQUELINE GOODMAN Memphis, Tennessee

JUNE GUICE McComb, Mississippi
Zeta Tau Alpha



MARTHA JO GULO Memphis, Tennessee
Delta Delta Delta

ANNABELLE HALL Memphis, Tennessee
Kappa Delta



BETTY HARTLEY Memphis, Tennessee
Kappa Delta

MAURINE HOLT Memphis, Tennessee
Delta Delta Delta



JEANETTE HORD Memphis, Tennessee
Delta Delta Delta

ADELAIDE HORTON Lucy, Tennessee
Zeta Tau Alpha



NANCY HUGHES Blytheville, Arkansas

VADIS JETER Memphis, Tennessee
Alpha Omicron Pi

JUNIORS

EVERARDE JONES Tchula, Mississippi
Kappa Sigma

NANCY NELL KIZER Milan, Tennessee
Chi Omega

DOROTHY JANE KNIGHT Memphis, Tennessee
Chi Omega

AUDREY KRAUCH Memphis, Tennessee
Kappa Delta

JEAN LAWO Memphis, Tennessee
Delta Delta Delta

BETTY LAY Homer, Louisiana
Delta Delta Delta

PATTIE PAGE MATHEWES Memphis, Tennessee
Chi Omega

NANCY McMAHAN Memphis, Tennessee
Chi Omega

MARY LOUISE PAYNE Greenville, Mississippi
Chi Omega

KITTY GREY PHARR Memphis, Tennessee
Chi Omega



JUNIORS

VIRGINIA WADE Memphis, Tennessee
 Delta Delta Delta

GLORIA WALKER Florence, Alabama
 Alpha Omicron Pi

BETTY BYNUM WEBB Fort Worth, Texas
 Kappa Delta

BERNICE WIGGINS Memphis, Tennessee
 Kappa Delta

LOUISE WILBOURN Memphis, Tennessee
 Chi Omega

HELEN WILLIAMS White Plains, New York

EMILY WILLIAMSON Memphis, Tennessee
 Chi Omega

JEAN WILSON Memphis, Tennessee
 Chi Omega



SOPHOMORE CLASS





CLASS OFFICERS

PRESIDENT	MARY LANGMEAD
VICE-PRES.	CURT PARHAM
SEC.-TREAS.	DAYTON SORSBY

SOPHOMORES



NANCY JEAN ALEXANDER
Delta Delta Delta
Little Rock, Arkansas

WINI ANDERSON
Zeta Tau Alpha
Memphis, Tennessee

MABEL BOONE
Memphis, Tennessee



BETTY BOUTON
Delta Delta Delta
Memphis, Tennessee

JOHN BRODERICK
Sigma Alpha Epsilon
Memphis, Tennessee

TRUDY BRUCE
Alpha Omicron Pi
Memphis, Tennessee



ANN BURKETT
Kappa Delta
Bassett, Arkansas

Mary McFall Buxton
Chi Omega
Memphis, Tennessee

DOROTHY CAMMER
Memphis, Tennessee



WINSTON CHEAIRS
Sigma Alpha Epsilon
Memphis, Tennessee

CAROLYN COOKE
Alpha Omicron Pi
Memphis, Tennessee

BETTY DALE
Oak Hill, Alabama



DOTTY DALRYMPLE
Delta Delta Delta
Memphis, Tennessee

JANE DAVIDSON
Kappa Delta
Memphis, Tennessee

JEANNE DeGRAFFENREID
Memphis, Tennessee

SOPHOMORES

DEE DOWLING
Kappa Delta
Pittsburgh, Pennsylvania

ANN DUNCAN
Grenada, Mississippi

LETTY LEE EDWARDS
Memphis, Tennessee



NORMA ESTES
Delta Delta Delta
Martin, Tennessee

ANN DUDLEY FIELD
Chi Omega
Memphis, Tennessee

FRANCES FISH
Zeta Tau Alpha
Memphis, Tennessee



EARNEST FLANIKEN
Memphis, Tennessee

PEGGY FLOYD
Alpha Omicron Pi
Memphis, Tennessee

MAYNARD FOUNTAIN
Sigma Alpha Epsilon
Greenwood, Mississippi



LOUISE FRANK
Delta Delta Delta
Memphis, Tennessee

CLEIGHTON GANNON
Memphis, Tennessee

JOHN GIDEON
Kappa Sigma
Memphis, Tennessee



MARY GIDEON
Delta Delta Delta
Memphis, Tennessee

MINNIE LEE GORDON
Chi Omega
Memphis, Tennessee

THOMAS GUITON
Kappa Sigma
Lillington, North Carolina



SOPHOMORES



FLOY GURGANUS
Zeta Tau Alpha
Forest Hill, Tennessee

BETTY LEE HANCOCK
Alpha Omicron Pi
Memphis, Tennessee

JIMMY HENRY
Kappa Sigma
Montgomery, Alabama



CAROLYN HESSELBEIN
Zeta Tau Alpha
Memphis, Tennessee

DOT HOGAN
Zeta Tau Alpha
Memphis, Tennessee

CLARICE IRBY
Memphis, Tennessee



CLAIRE JAMES
Alpha Omicron Pi
Memphis, Tennessee

SARAH JOHNSTON
Hernando, Mississippi

WILLIAM JONES
Sigma Alpha Epsilon
Memphis, Tennessee



FRANCES KEATON
Kappa Delta
Memphis, Tennessee

TEMPE KYSER
Chi Omega
Memphis, Tennessee

MARY LANGMEAD
Kappa Delta
Washington, D. C.



PAULINE LAGUZZI
Zeta Tau Alpha
Memphis, Tennessee

PEGGY LAUGHTER
Memphis, Tennessee

LAVERNE LAZAROV
Memphis, Tennessee

SOPHOMORES

KATHRYN LYNCH
Delta Delta Delta
Collierville, Tennessee

JANE MANN
Kappa Delta
Memphis, Tennessee

SARA GREY McCALLUM
Zeta Tau Alpha
Ripley, Tennessee



WILLIAM McCAIN
Memphis, Tennessee

MARY FRANCES McDEARMON
Kappa Delta
Memphis, Tennessee

PAUL McCLENDON
Sigma Alpha Epsilon
Montgomery, Alabama



MARY ANN METZGER
Chi Omega
Memphis, Tennessee

VIRGINIA MORGAN
Memphis, Tennessee

MARY ANN NASH
Kappa Delta
Stanton, Tennessee



RUBY ORGAIN
Kappa Delta
Little Rock, Arkansas

MARY LOU ORTMAYER
Zeta Tau Alpha
Memphis, Tennessee

CURT PARHAM
Sigma Alpha Epsilon
Memphis, Tennessee



PEGGY PARSONS
Kappa Delta
Memphis, Tennessee

FRANCES PERKINS
Chi Omega
Memphis, Tennessee

VIRGINIA PRETTYMAN
Memphis, Tennessee



SOPHOMORES



ANN PRIDGEN
Alpha Omicron Pi
Memphis, Tennessee

KATIE RECORD
Zeta Tau Alpha
Dallas, Texas

DOTTIE PARK REINHARDT
Alpha Omicron Pi
Memphis, Tennessee



MARY LOUISE RHEA
Zeta Tau Alpha
Somerville, Tenn.

SUE ROBINSON
Wynne, Arkansas.

JEAN SAMUELS
Clinton, Kentucky



ALICE SCOTT
Delta Delta Delta
Memphis, Tennessee

NANCY SCOTT
Delta Delta Delta
Shreveport, Louisiana

JEAN SHEPHERD
Alpha Omicron Pi
Memphis, Tennessee



DAYTON SORSBY
Memphis, Tennessee

JOYCE SPALDING
Alpha Omicron Pi
Memphis, Tennessee

NORMA SUTTLE
Delta Delta Delta
Memphis, Tennessee



FLORENCE SWEPSTON
Chi Omega
Memphis, Tennessee

NAIDA THOMAS
Kappa Delta
Memphis, Tennessee

BARBARA THOMPSON
Chi Omega
Memphis, Tennessee

SOPHOMORES

NIMROD THOMPSON
Sigma Alpha Epsilon
Washington, D. C.

IRMA WADDELL
Chi Omega
Memphis, Tennessee

MAY WALLACE
Chi Omega
Memphis, Tennessee



JULIA WELLFORD
Chi Omega
Memphis, Tennessee

JANE WILLIAMS
Delta Delta Delta
Tunica, Mississippi

NANCY WOODS
Chi Omega
Memphis, Tennessee



BETTY WOOLFOLK
Delta Delta Delta
Tunica, Mississippi

PEGGY WOOLFOLK
Delta Delta Delta
Tunica, Mississippi

MAUDE YOUNG
Memphis, Tennessee



FRESHMEN CLASS





CLASS OFFICERS

PRESIDENT JIMMY PENTZ
VICE-PRES. (Not pictured) JIMMY BLANKENSHIP
SEC.-TREAS. CAROLYN CUNNINGHAM

FRESHMEN



JUNE ROSE ADAMS Memphis, Tennessee

BETTY JO AUSTIN Memphis, Tennessee
Zeta Tau Alpha

MARGARET AUSTIN Cottage Grove, Tennessee
Kappa Delta



CAMILLE BAILEY Memphis, Tennessee
Chi Omega

BETTY BARBER Memphis, Tennessee
Chi Omega

IRENE BARBOUR Indianola, Mississippi
Delta Delta Delta



BOBBY BARHAM Memphis, Tennessee
Kappa Alpha

DOROTHY BARNES Memphis, Tennessee
Kappa Delta

BEVERLY BEANE Memphis, Tennessee
Chi Omega



LILY ANN BEGGS Memphis, Tennessee
Alpha Omicron Pi

MARTHA BLACKMAN Memphis, Tennessee

SUE BLACKWELL Memphis, Tennessee
Zeta Tau Alpha



SAM BLAIR Memphis, Tennessee
Kappa Alpha

JIMMY BLANKENSHIP Monette, Arkansas
Kappa Sigma

BARBARA BOWDEN Memphis, Tennessee
Alpha Omicron Pi



BETTY JO BRANTLEY Memphis, Tennessee

AMELIA BRENT Heth, Arkansas
Delta Delta Delta

DOROTHY BROWN Memphis, Tennessee

FRESHMEN

HAZEL BROWN Leland, Mississippi
Delta Delta Delta

KATHERINE BROWN Memphis, Tennessee
Delta Delta Delta

FRANCES BURKS Dyersburg, Tennessee
Kappa Delta

BARBARA BURNETT New Orleans, Louisiana
Zeta Tau Alpha

MARGARET BUTLER Memphis, Tennessee

JUNE CAMP Memphis, Tennessee

MARTHA CARROLL Memphis, Tennessee
Chi Omega

VIRGINIA CARTWRIGHT Memphis, Tennessee
Delta Delta Delta

JULIA CHESTER Dallas, Texas
Zeta Tau Alpha

JEANNE CLAWSON Dallas, Texas
Zeta Tau Alpha

JOAN COGSWELL Memphis, Tennessee

COZETTE COLE Memphis, Tennessee

ANNE CONNER Marianna, Arkansas
Kappa Delta

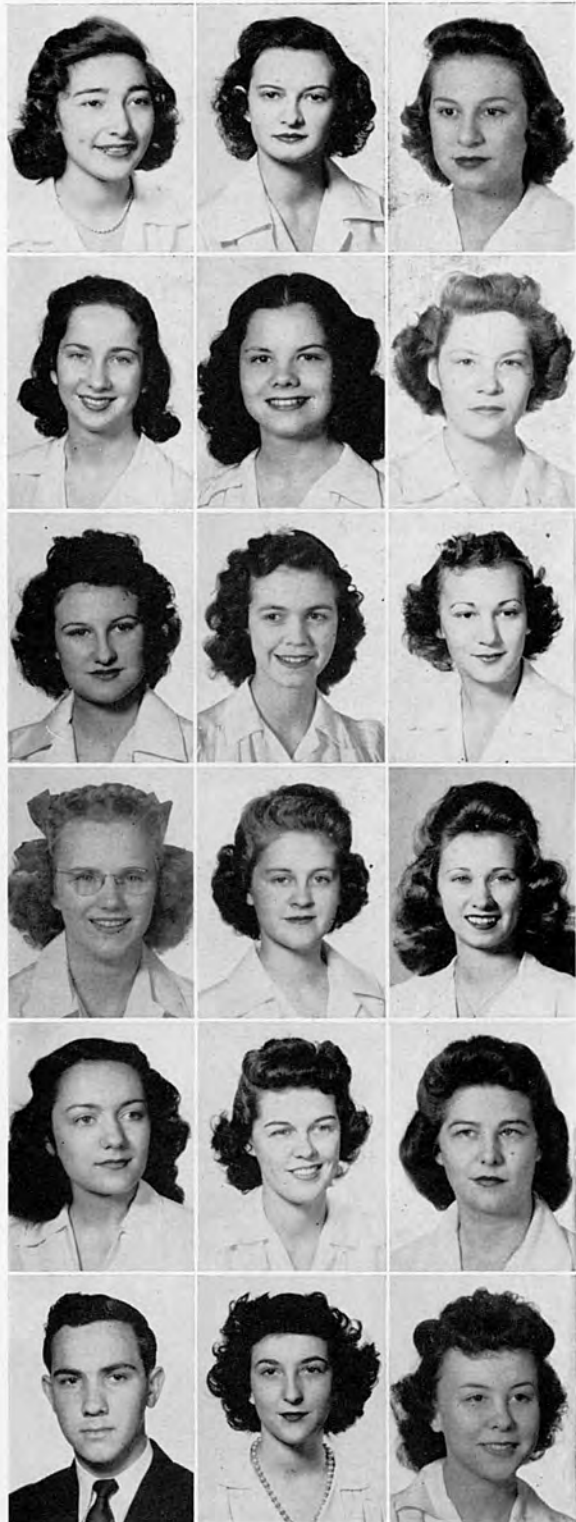
ANN CONWAY Memphis, Tennessee
Delta Delta Delta

GLORIA COOK Lake Village, Arkansas
Kappa Delta

DAN COOPER Memphis, Tennessee

CAROLYN CUNNINGHAM Arlington, Tennessee
Chi Omega

MARY BELLE CURRIER Paris, Tennessee
Chi Omega



FRESHMEN



LEONA DeMERE Memphis, Tennessee
Kappa Delta

DUDLEY DRAKE Memphis, Tennessee
Kappa Alpha

SUE DUGGER Sheffield, Alabama



MINNIE WALKER EVANS Memphis, Tennessee
Chi Omega

LaVERNE EVENSKY Memphis, Tennessee

GUERLAYNE FULLER Memphis, Tennessee
Zeta Tau Alpha



MARY JOICE FONDREN Itta Bena, Mississippi
Alpha Omicron Pi

TAYLOR FRANKS Greenville, Mississippi
Chi Omega

ELIZABETH FULKERTH Forrest City, Arkansas



PEGGY GALLIMORE Greenfield, Tennessee
Zeta Tau Alpha

LUCILLE HAMER Brownsville, Tennessee
Chi Omega

MARY VIRGINIA HAMM Memphis, Tennessee



MARY MAURY HARDING Memphis, Tennessee
Chi Omega

MARGARET HARWICK Covington, Tennessee
Zeta Tau Alpha

MARGARET HARTHCOCK Clarksdale, Mississippi
Kappa Delta



ROBERT THOMAS HAVERTY Memphis, Tennessee
Sigma Alpha Epsilon

GLENNA HERNDON Memphis, Tennessee
Alpha Omicron Pi

PAULA MARCHETA HIXON Longview, Texas

FRESHMEN

MARILU HOWTON Turrell, Arkansas

JANE HUGHES Pocahontas, Arkansas

JEAN IGOU Memphis, Tennessee
Alpha Omicron Pi

DOROTHY JAMISON Tiptonville, Tennessee

DAVID JOHNSON Gallatin, Tennessee
Kappa Alpha

TED JOHNSON Memphis, Tennessee
Kappa Sigma

FREDA JOLLY Memphis, Tennessee
Kappa Delta

HUGH JONES Memphis, Tennessee
Kappa Sigma

WILLIAM JUSTIS Germantown, Tennessee
Sigma Alpha Epsilon

BILL KEISKER Memphis, Tennessee

OTTO KELLER Montgomery, Alabama

MARY EMMA KELLEY Memphis, Tennessee

MARGARET KELTON Mt. Pleasant, Tennessee
Kappa Delta

JANE KILVINGTON Memphis, Tennessee
Delta Delta Delta

BETTY LONG Memphis, Tennessee
Alpha Omicron Pi

MARY JANE MAJOR Memphis, Tennessee
Zeta Tau Alpha

LUCILE MAURY Memphis, Tennessee
Chi Omega

BILL McAFEE Memphis, Tennessee
Kappa Sigma



FRESHMEN



NANCY McCORMICK Memphis, Tennessee
Chi Omega

BETTY JANE MOORE Memphis, Tennessee

CAROL MORRIS Paris, Tennessee
Delta Delta Delta



EUGENIA NOE Memphis, Tennessee

JANE OGDEN Memphis, Tennessee
Chi Omega

JEANNE O'HEARNE Memphis, Tennessee
Delta Delta Delta



BILLY O'NEAL Clarksdale, Mississippi

MARGARET PACE Dallas, Texas

JO ALICE PAGE Memphis, Tennessee
Alpha Omicron Pi



JANIE V. PAINE Memphis, Tennessee
Chi Omega

CHARLIE PARK Leland, Mississippi
Kappa Sigma

PATRICIA PARK Merigold, Mississippi
Zeta Tau Alpha



JIM PENTZ Memphis, Tennessee
Kappa Sigma

VIRGINIA PEOPLES Dyersburg, Tennessee
Delta Delta Delta

CHARLES POOL Memphis, Tennessee



MARY BELLE PRITCHARD Oakland, Mississippi

VAN PRITCHARD Memphis, Tennessee
Sigma Alpha Epsilon

SARA RALSTON Petersburg, Tennessee
Zeta Tau Alpha

FRESHMEN

ANN LASSWELL RIGGS Kennett, Missouri

ELISE RITNOUR Memphis, Tennessee
Delta Delta Delta

NANCY LEE ROBINSON Memphis, Tennessee
Zeta Tau Alpha

MARY SUE ROE Memphis, Tennessee
Delta Delta Delta

ANNA LOUISE ROTHER Memphis, Tennessee

SUZANNE SADLER Gatesville, Texas
Zeta Tau Alpha

FLETCHER SCOTT Memphis, Tennessee
Kappa Alpha

HILMA SEAY Memphis, Tennessee
Alpha Omicron Pi

BETSY SELIGSTEIN Memphis, Tennessee

BETTY SHEA Memphis, Tennessee
Alpha Omicron Pi

NORMA SHELTON Memphis, Tennessee
Delta Delta Delta

BETTYE JUNE SIMMONS Gallatin, Tennessee
Delta Delta Delta

ELSIE SPELLINGS Bells, Tennessee
Kappa Delta

KAYE STEUWER Memphis, Tennessee
Kappa Alpha

KATHERINE STEVENSON Memphis, Tennessee

SUZONNE STEWART Memphis, Tennessee
Alpha Omicron Pi

BOB STOBAUGH Martin, Tennessee
Kappa Sigma

RUTH STOKES Dermott, Arkansas



FRESHMEN



DORETTE STORN Memphis, Tennessee

GENIE SUMRALL Memphis, Tennessee
Zeta Tau Alpha

GLENN SWINGLE Earle, Arkansas
Kappa Sigma



MAMYE TATE Laurel, Mississippi
Zeta Tau Alpha

JEAN TEMPLE Memphis, Tennessee

GINGER THOMASON Memphis, Tennessee
Chi Omega



JO THORNTON Brownsville, Tennessee
Delta Delta Delta

CLIFFORD TUCKER Memphis, Tennessee

MAC TURNAGE Gulfport, Mississippi
Kappa Sigma



TOCK UHLHORN Memphis, Tennessee
Sigma Alpha Epsilon

RACHAEL UTLEY Dyer, Tennessee
Zeta Tau Alpha

MARY ELLEN VACCARO Memphis, Tennessee
Zeta Tau Alpha



MADOLON WALKER Memphis, Tennessee
Chi Omega

MARY VIRGINIA WALKER Horn Lake, Mississippi

PHYLLIS WELLFORD New Orleans, Louisiana
Alpha Omicron Pi



BOB WHERRITT New Orleans, Louisiana

BETTY WHITSITT Memphis, Tennessee
Alpha Omicron Pi

MARIE WICKER Memphis, Tennessee

FRESHMEN

ROLLIN WILSON Memphis, Tennessee
 Sigma Alpha Epsilon

HELEN WONG Rosedale, Mississippi

KATIE WONG West Memphis, Arkansas



SPECIAL STUDENTS

AUDREY GENSEL Memphis, Tennessee

CARLOS KAKOURIS Mexico City, Mexico

JOE STROUD Memphis, Tennessee



HAL
FA



MARY ANN BANNING



ANN HOWARD BAILEY

L OF ME

The highest honor that can be awarded a senior at Southwestern is to be numbered in the Hall of Fame.

Candidates for membership are nominated by the Student Council and the final selection is made by the presidents of the Sophomore and Junior Classes, the vice-president of the student body, and the president and dean of the college. Indispensable qualifications are leadership, scholarship, character, and service.

This year those honored are:

MARY ANN BANNING
ANN HOWARD BAILEY
JANE MILNER



JANE MILNER

STUNT

SPONSORED BY ALPHA



INDEPENDENT MEN

ALPHA OMRICON PI

DELTA DELTA DELTA



KAPPA

NITE

OMICRON PI SORORITY



CHI OMEGA "THE WINNAH"

ZETA TAU ALPHA

INDEPENDENT WOMEN



DELTA



ORGANIZATIONS





THE STUDENT COUNCIL



First row—Uhlhorn, Langmead, Banning, Fountain, Crutcher, Bigger, Wilkinson. Second row—McClendon, Williamson, Moran, Milner, Hyde, Bailey, Blankenship.

OFFICERS

President	MARY ANN BANNING
Vice President (1st semester) (not pictured)	ED DEWEY
Vice President (2nd semester)	MAYNARD FOUNTAIN
Secretary-Treasurer	GINNY CRUTCHER
President of Senior Class	BETTY JEAN WILKINSON
President of Junior Class	JANE BIGGER
President of Sophomore Class	MARY LANGMEAD
President of Freshman Class	JIM BLANKENSHIP
President of Men's Pan-Hellenic Council	JOHN GIDEON
President of Women's Pan-Hellenic Council	IMOGENE WILLIAMSON
President of Torch	BETTY JEAN WILKINSON
President of Honor Council	JULIA WELLFORD
President of Christian Union Cabinet	JANE MILNER
President of Southwestern Players	ANNE HOWARD BAILEY
President of Women's Undergraduate Society	LOUISE MORAN
President of Y. W. C. A.	ANITA HYDE
President of Elections Commission (1st semester)	ED DEWEY
President of Elections Commission (2nd semester)	BERNIECE WIGGINS
President of Publication Board (1st semester)	WINSTON CHEAIRS
President of Publication Board (2nd semester)	PAUL MCCLENDON
Editor of Lynx	TEASIE UHLHORN
Editor of Sou'wester (1st semester)	JOHN BRODERICK
Editor of Sou'wester (2nd semester)	VAN PRITCHART

The Student Council is the official and representative organization of the student body. It discusses relations between student organizations and presents matters for the consideration of the student body. It helps to shape student opinion, and serves as a medium between the students and the faculty.

HONOR COUNCIL



Left to Right—Dayton Sorsby, Beverly Beane, Betty Ezell, Betty Belk, Maynard Fountain, Julia Wellford, Mac Turnage, Nancy Kizer, Virginia Gibbins, Dorothy Chauncey, Jane Soderstrom. Members not pictured: Gene Dickson, Joy Gallimore.

OFFICERS

President	JULIA WELLFORD
Vice President	NANCY KIZER
Secretary	VIRGINIA GIBBINS

The Honor Council is composed of 13 representatives of the student body, elected by classes. It promotes the Honor Spirit and acts as a trial body for those accused of violating the system.

ALPHA THETA PHI



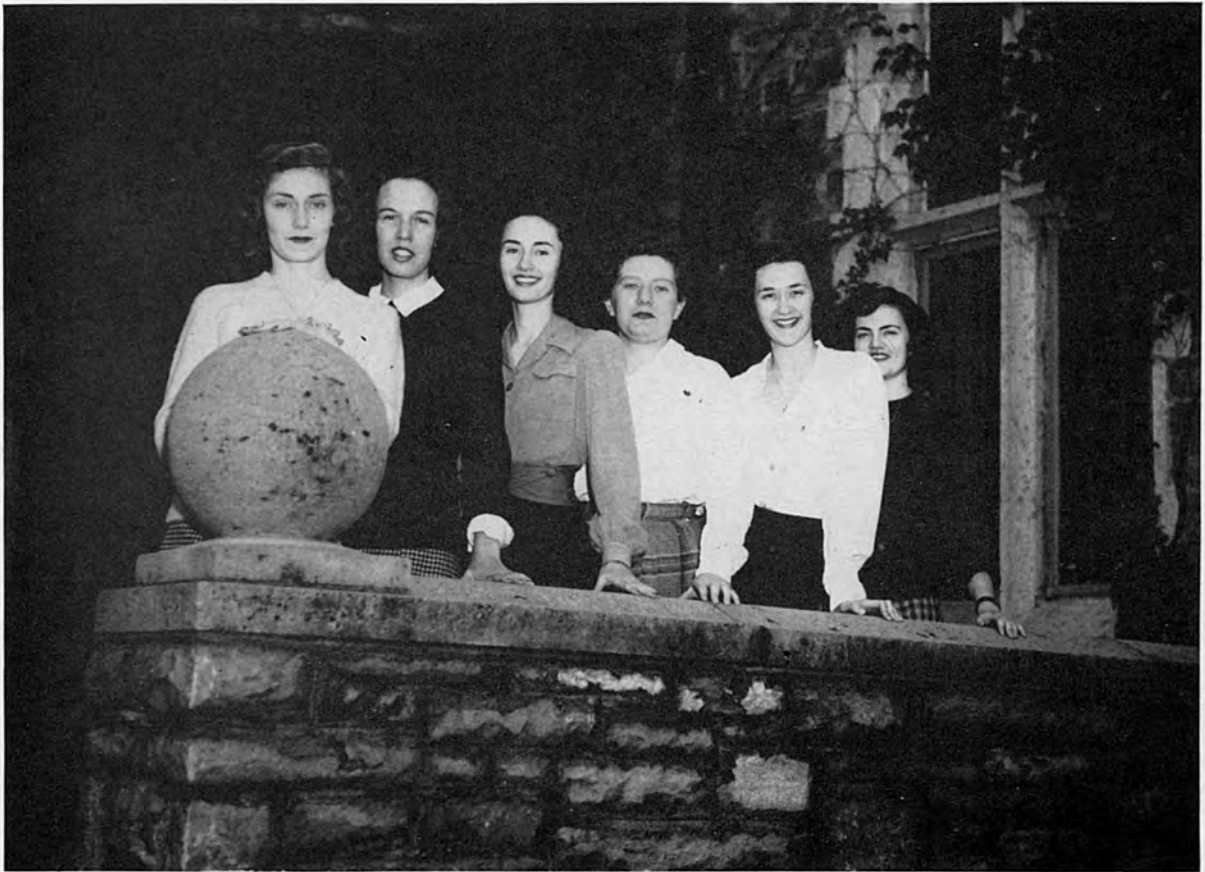
Left to right—Betty Ezell, Jane Milner, Betty Jean Wilkinson, Ann Howard Bailey. Dr. H. J. Bassett, not pictured.

OFFICERS

President	ANNE HOWARD BAILEY
Vice President	BETTY JEAN WILKINSON
Secretary-Treasurer	BETTY EZELL
Faculty Advisor	DR. H. J. BASSETT

Alpha Theta Phi is a scholastic fraternity of both men and women who have completed at least two and one-half years of college work, maintaining an exceptionally high scholastic average. Its purpose is to recognize such students and to emphasize scholarship in the thoughts of other students.

TORCH



Left to right—Anita Hyde, Jane Milner, Betty Jean Wilkinson, Betty Ezell, Louise Moran, Gear Dickson, not pictured.

OFFICERS

President	BETTY JANE WILKINSON
Vice President	LOUISE MORAN
Secretary-Treasurer	JANE MILNER

Torch honorary society for senior women, is patterned after Mortar Board, which order it is petitioning. This organization strives to recognize women who have attained high standards of leadership and scholarship and to bring together the most well rounded and representative women on the campus.

THE SOU'WESTER



1st row—Teasie Uhlhorn, Betty Bouton, Mary Langmead, Kitty Grey Pherr, Irma Waddell, Virginia Wade, Norma Shelton, Mary Sue Roe, Julia Wellford. 2nd row—May Wallace, Lily Ann Beggs, Annabell Hall, Terry Einstein, Jeanne O'Hearne, Nancy McMahan, Amelia Brent, Mayme Tate. 3rd row—Dorothy Chauncy, Jane Milner, Peggy Parsons, Maynard Fountain, Curt Parham, Joyce Spalding, Beverly Beane, Jane Kilvington.

STAFF

Editor (not pictured) VAN PRITCHARTT
 Business Manager (not pictured) MARIE GOOCH
 Managing Editor KITTY GREY PHARR

MEMBERS NOT PICTURED

CLAIRE JAMES	LEONA DE MERE	ARCHIE TURNER
BETTY LEE HANCOCK	PATSY MATHEWS	SARAH BARTH
MIGNON PRESLEY	GINNY CRUTCHER	TED JOHNSON
ANN PRIDGEN	MARGARET PACE	BETTY SHEA

The Sou'wester is the weekly news publication of the student body.

THE LYNX



First row—Lily Ann Beggs, June Crutchfield, Teasie Uhlhorn, Kitty Grey Pharr, Virginia Wade. Second row—Jo Alice Page, Amilia Brent, Annabelle Hall, May Wallace, Taylor Franks, Maynard Fountain.

STAFF

Editor	TEASIE UHLHORN
Assistant Editor	JUNE CRUTCHFIELD
Business Manager	KITTY GREY PHARR

The Lynx is the Southwestern Annual Publication.

THE CANTERBURY CLUB



First row—Katherine Brown, Mary Sue Roe, Marguerite Field, Teasie Uhlhorn, Second row—Dorothy Chauncey, Julia Wellford, Lily Ann Beggs, Ann Riggs, Katherine Lynch, Jane Williams, Virginia Wade, Dr. J. H. Davis, Nancy McMahan, Kitty Grey Pharr, Janie V. Paine, May Harding, Norma Shelton, Anita Hyde.

OFFICERS

President	VIRGINIA WADE
Vice President	JANE WILLIAMS
Secretary-Treasurer	JANE TREADWELL
Program Chairman	LOUISE WILBOURN
Faculty Advisor	DR. J. H. DAVIS

MEMBERS NOT PICTURED

NANCY SILER	WARRENE BUFORD
GLORIA WALKER	LOUISE WILBOURN
EMILY WILLIAMSON	NANCY JEAN ALEXANDER
GARNET FIELD	LOUISE FRANK
JEAN IGOU	MARY GIDEON

The purpose of the Canterbury Club is to promote worship, fellowship, study, and service, to bring students together irrespective of religious affiliation, to discuss problems affecting the college student and the relation of religion to everyday life. Meetings are held twice a month at which various ministers of the city lead the discussions.

S. T. A. B.



OFFICERS

President	JOY GALLIMORE
Vice President	PATSY PAGE MATHEWS
Secretary-Treasurer	BETTY JEAN WILKINSON
Founders Day	PEGGY GALLIMORE

MEMBERS

MARY ANN BANNING	NANCY KIZER	BETTY LEE HANCOCK
LOUISE MORAN	DOROTHY REINHARDT	AMELIA BRENT
JANE BIGGER	ROBERTA TREANOR	HILMA SEAY
JEAN McCOLLOUGH (not pictured)		

S. T. A. B. is an inter-sorority founded at Randolph Macon in 1899. It was organized for purely social purposes and attempts to create thereby a feeling of harmony among the sorority women on the campus. Each Friday the members wear red and white, the colors of the group.

Women's Dormitory Governing Board



Left to right—First row—Mayme Tate, Nancy Kizer, Ginny Crutcher, Mary Langmead. Second row—Betty Ezell, Imogene Williamson, Betty Belk.

OFFICERS

President	IMOGENE WILLIAMSON
Vice President	BETTY BELK
Secretary-Treasurer	BETTY EZELL

The Women's Dormitories Governing Board is an elected, representative body, whose purpose it is to make and enforce the rules governing the conduct of women students living in Robb, Calvin and Stewart Halls.

CHRISTIAN UNION CABINET



Left to right—Steve Schillig, Betty Belk, Jane Milner, Anita Hyde, Jane Bigger, Mary Frances Lynch, Dayton Sorsby. Members not pictured—Julia Wellford, Dr. L. K. Kinney.

OFFICERS

President	JANE MILNER
Vice President (Not Pictured)	DONALD MacGUIRE
Secretary-Treasurer (Not Pictured)	WINI ANDERSON

The Christian Union Cabinet is made up of the officers of those groups on the campus which are strictly religious, the Ministerial Club, and the Y. W. C. A. In addition, eight persons are selected from the student body at large. The Cabinet directs student religious activities, and each year sponsors a week of prayer and consecration.

Y. W. C. A.



1st Row—Jane Bigger, Betty Belk, Anita Hyde, Jane Milner. 2nd Row—Julia Wellford, Dorothy Chauncey, Joyce Spalding, Virginia Gibbins, Betty Ezell. Member not in picture, Jane Davidson.

OFFICERS

President	ANITA HYDE
Vice President	JANE BIGGER
Secretary	JANE MILNER
Treasurer	BETTY BELK

CABINET

Devotional	VIRGINIA GIBBINS
Social Service	JOYCE SPAULDING
Art and Publicity	BETTY EZELL
Music	JULIA WELLFORD
Social Activities	JANE DAVIDSON
Membership	DOROTHY CHAUNCEY

The Y. W. C. A. has a three-fold purpose: "To realize full and creative life through a growing knowledge of God, to have a part in making this life possible for all, and to promote friendship among the students and cooperation in campus activities." It endeavors to aid the administration with the orientation of new students and sponsors evening devotionals in Evergreen Hall.

THE PUBLICATIONS BOARD



Paul McClendon, Bernice Wiggins, Beverly Barron, Curt Parham.

OFFICERS

President (1st Semester)	WINSTON CHEAIRS
President (2nd Semester)	PAUL McCLENDON
Secretary	PROF. J. O. WOLF
Treasurer	C. L. SPRINGFIELD

The purpose of the Publications Board is to exercise supervision and control over all student publications. All such publications are authorized by the Board, which also selects the editors and makes all financial appropriations to them.

The board is composed of a president, elected by the student body, an elected member from each of the three upper classes, a faculty member appointed by the president of the College, and a permanent treasurer, the Bursar of the College.

ELECTIONS COMMISSION



Left to Right—Maynard Fountain, June Crutchfield, Bernice Wiggins, Jane Bigger, Betty Ezell, John Gideon. Members not pictured: Joy Gallimore, Jo Schilig, Ed Dewey.

OFFICERS

President (1st Semester)	ED DEWEY
President (2nd Semester)	BERNICE WIGGINS
Vice President	BERNICE WIGGINS
Secretary	JOY GALLIMORE

The Elections Commission is composed of one member from each fraternity and sorority group, and also from the non-fraternity and non-sorority groups. Its purpose is to insure fair student elections and guarantee to every student the right to a free Ballot.

STYLUS CLUB



First row—Jane Milner, Sue Robinson, Paul McClendon, Margaret Pace, Mignon Presley. Second row—Frances Keaton, Anne Howard Bailey, Margie Field, Irma Waddell. Members not pictured—Josephine Schillig, Florence Swebston, Sarah Barth, John Broderick.

OFFICERS

President BERNIECE WIGGINS
Secretary-Treasurer (Not Pictured) LEE CONLEY

The purpose of Stylus Club is to recognize and encourage literary ability. Members are chosen through invitation to submit papers in competition, the best of which are chosen for membership. The club works in co-operation with the Journal, the campus literary publication, and offers rewards for the best manuscripts submitted.

THE NITIST CLUB



Left to right—Irma Waddell, Annabelle Hall, Terry Einstein, Dorothy Chauncey, Betty Bouton, Jeanne O'Hearne, Janie V. Paine, Bill Bullock, Roberta Treanor, Peggy Parsons, Dr. John H. Davis. Members not pictured—Winston Cheairs, June Crutchfield.

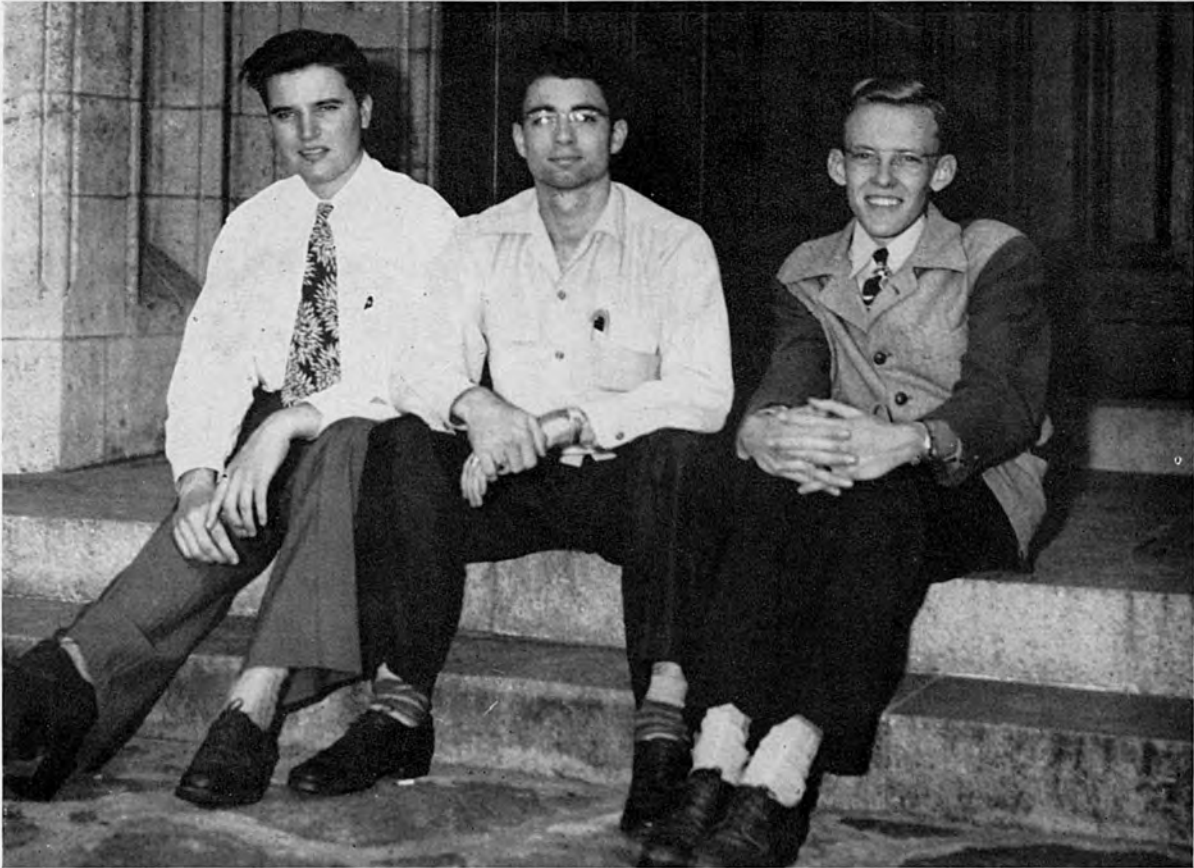
OFFICERS

President (1st Semester)	WINSTON CHEAIRS
President (2nd Semester)	TERRY EINSTEIN
Secretary-Treasurer	JUNE CRUTCHFIELD

The Nitist Club, an affiliate of the International Relations Club, meets monthly at which time a paper is presented by one of the members or an invited guest on a topic of current and general interest. A round-table informal discussion follows the paper.

The purpose of the Nitist Club is to stimulate campus interest in the vital questions of the day.

MINISTERIAL CLUB



Left to right—Dayton Sorsby, Ernest Flaniken, Mac Turnage. Members not pictured—Robert Wherritt, Archie Turner, Dr. Laurence F. Kinney.

OFFICERS

President DAYTON SORSBY
Vice President (Not Pictured) DONALD MacGUIRE
Secretary-Treasurer (Not Pictured) TAG GUITON

Membership in the Ministerial Club includes not only those students studying for the ministry, but also those interested in discussing religious and social problems of the day. The club supports all religious activities on the campus and frequently holds devotional services at various institutions in the city.

PI INTERSORORITY



JUNE CRUTCHFIELD
High Pi

JANE MILNER
Low Pi

TRUDY BRUCE
Secretary-Treasurer

BETTY BOUTON
May Day Pi



Top row: left to right—June Crutchfield, Jane Milner, Trudy Bruce, Betty Bouton, Ginny Crutcher, Gene Dickson, Imogene Williamson. Second row: left to right—Frances Uhlhorn, Jeanette Hord, Bernice Wiggins, Jean Samuels, Mary Buxton, Winnie Anderson. Third row—Mary Langmead, Barbara Bowden. Fourth row—Camille Bailey, Jane Ogden.

Pi, a national intersorority, is designed to promote friendly relations among the various sororities on the campus. It was established at Randolph-Macon in 1901. Social functions are given from time to time and each Tuesday, the members wear green and white, the colors of the group.

THE PLAYERS



Left to right—Anne Howard Bailey, Imogene Williamson, Terry Einstein, Jane Milner. Members not pictured—Donald MacGuire, Mr. Johnny Rollo, Dr. George F. Totten.

OFFICERS

President	ANNE HOWARD BAILEY
Vice President (Not Pictured)	BERNICE WIGGINS
Secretary-Treasurer	TERRY EINSTEIN

The Southwestern Players is a campus organization for promoting appreciation of drama and learning the skills of the theatre. Membership is taken from heelers or apprentices, who have contributed the equivalent of a year's work in dramatics.

THE SOUTHWESTERN SINGERS



1st Row (left to right)—Barbara Bowden, Irma Waddell, Julia Wellford, Gene Dickson, Prof Burnet Tuthill, May Lou Almedo, Betty Webb, Myra Jo Thornton, Virginia Peeples, Mary Lou Ortmeier.
 2nd Row—Carolyn Cunningham, Jeanne O'Hearne, Wini Anderson, Ann Burkett, Lucille Hamer, Sarah Ralston, Jean Lawo, Betty Jean Wilkinson, Jean Igou, Hilma Seay.
 3rd Row—Amelia Brent, Billye Sutton, Lee Conley, Letty Edwards, Betty Joy Smith, Frances Perkins, Mary Frances McDearman, Catherine Stephenson.
 4th Row—Virginia Gibbins, Peggy Floyd, Eugenia Sumrall, Peggy Laughter, Jane Kilvington, Martha Blackman, Frances Fish, Anna Louise Rother, Adelaide Horton.
 Members not pictured: Sarah Barth, Margaret Butler, May Christie, Evelyn Dowling, Elizabeth Tulkerth, Margaret Hardwick, Margaret Harrison, Carolyn Hesselheim, Vadis Jeter, Sarah Johnston, Emma Kelly, Virginia Prettyman, Mary Belle Pritchard, Betty Faux, Josephine Schilling, Jane Soderstrom, Florence Simpton.

OFFICERS

President	GENE DICKSON
Vice President	FRANCES FISH
Vice President	PEGGY LAUGHTER
Secretary-Treasurer	VIRGINIA GIBBINS

The Southwestern Singers is the primary musical organization on the campus. It performs at vesper services, and appears at various schools and churches in the vicinity.

STUDENTS NOT PICTURED

SENIORS

MILLICENT EDEL ANDERSON	Memphis, Tenn.
GLADYS MOORE ELLIS	Memphis, Tenn.
MARY JANE HOWELL HARGRAVES	Memphis, Tenn.
PEARLE WEEKS STRICKLER	Memphis, Tenn.

JUNIORS

ANITA WILTON BEGNEAUD	Hodgenville, Ken.
EVA CATHERINE BEGNEAUD	Hodgenville, Ken.
HOPE MARILYN BESPALOW	Memphis, Tenn.
MARY CATHERINE EAKIN	Petersburg, Tenn.
CHARLOTTE ADEE EDMONDSON	Memphis, Tenn.
MAVALENE FONDREN FLOYD	Memphis, Tenn.
JEANNE LOUISE GOLTMAN	Memphis, Tenn.
PEGGY HELEN GOLTMAN	Memphis, Tenn.
ANN MARMON	Memphis, Tenn.
SARA SPARR TAYLOR	Memphis, Tenn.
JANE SNOWDEN TREADWELL	Memphis, Tenn.

SOPHOMORES

FRANCES BURNET	Memphis, Tenn.
DOROTHY BYRNES	Memphis, Tenn.
MARY JANE KELLOGG	Memphis, Tenn.
NANCY ANN LASLEY	Memphis, Tenn.
ANN McCONNELL	Hulbert, Ark.
JAMES R. McQUISTON	Memphis, Tenn.
MARGARET PATE	Memphis, Tenn.
LESTER PRIDDY, JR.	Memphis, Tenn.
SHIRLEY RUSSELL	Memphis, Tenn.
JOAN WARNER	Tuscaloosa, Ala.
JANICE WENDER	Memphis, Tenn.

FRESHMEN

JANICE ALPERIN	Memphis, Tenn.
WILLIAM BATAILE	Memphis, Tenn.
LAURENCE BECK	Memphis, Tenn.
RICHARD BIRCKHEAD	Memphis, Tenn.
FRED BIZOT	Memphis, Tenn.
BOB BLYTHE	De Witt, Arkansas
FRANCES BUCK	Memphis, Tenn.
PATSY CAMPBELL	Memphis, Tenn.
BETTY FAUX	Memphis, Tenn.
CLEIGHTON GANNON	Memphis, Tenn.
JOHN GORMAN	Memphis, Tenn.
JERRY HANCOCK	Germantown, Tenn.
ALLEN HARRIS, JR.	Sikeston, Mo.
HERMAN KAPLAN	Memphis, Tenn.
ALBERT KISBER	Memphis, Tenn.
OPIE REID LAWRENCE	Whitehaven, Tenn.
JEAN ANN McCULLOUGH	Memphis, Tenn.
JAMES MELLOR	El Dorado, Ark.
DOLORES PAETH	Memphis, Tenn.
MARY LOUISE REPULT	Memphis, Tenn.
STEVE SCHILLIG	Leland, Miss.
DOROTHY McLEMORE WEST	Memphis, Tenn.

GAY NINE

SPONSORED BY KAP

"OH YOU BEAUT"



"YOUR SLIP'S SHOWING, CUTIE!"



"BOOMPS A DAISY"

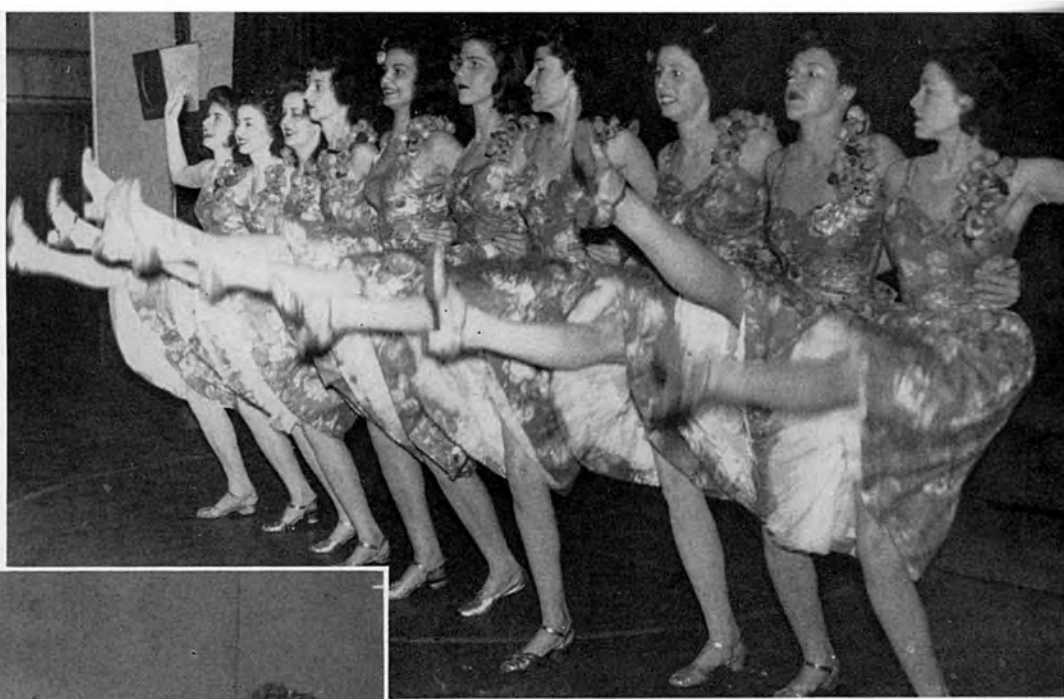


"BY THE SEA---

NETIES VUE

PA DELTA SORORITY

IFUL DOLLS - - - "



"ONE, TWO, THREE, KICK"



"OH - MY MAN - - -"



BY THE SEA - - - "

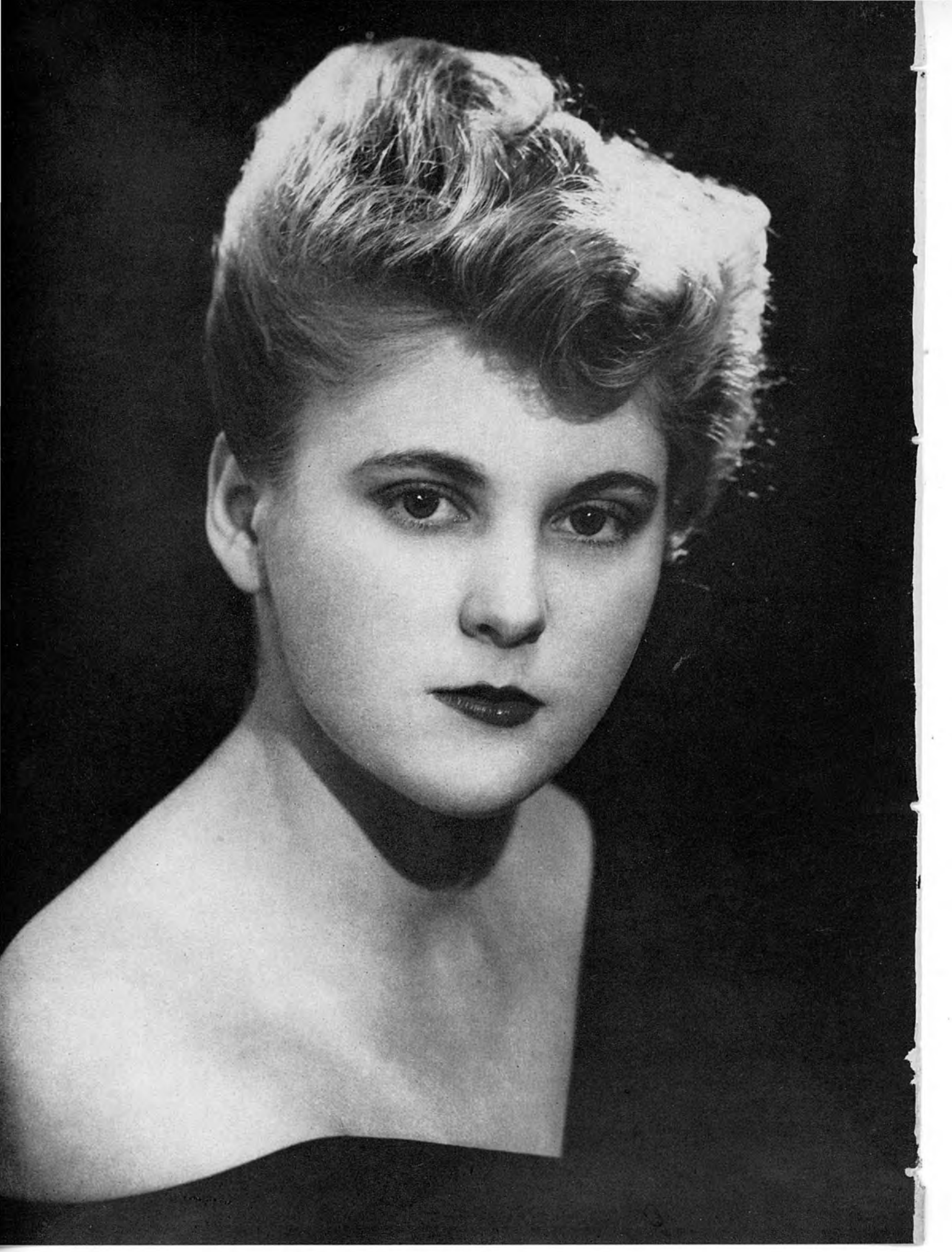


THE BEAUTIES

1. *Mary McFall Buxton*
2. *Hilma Seay*
3. *Lucille Hamer*
4. *Jean Ann McCullough*
5. *Frances Perkins*









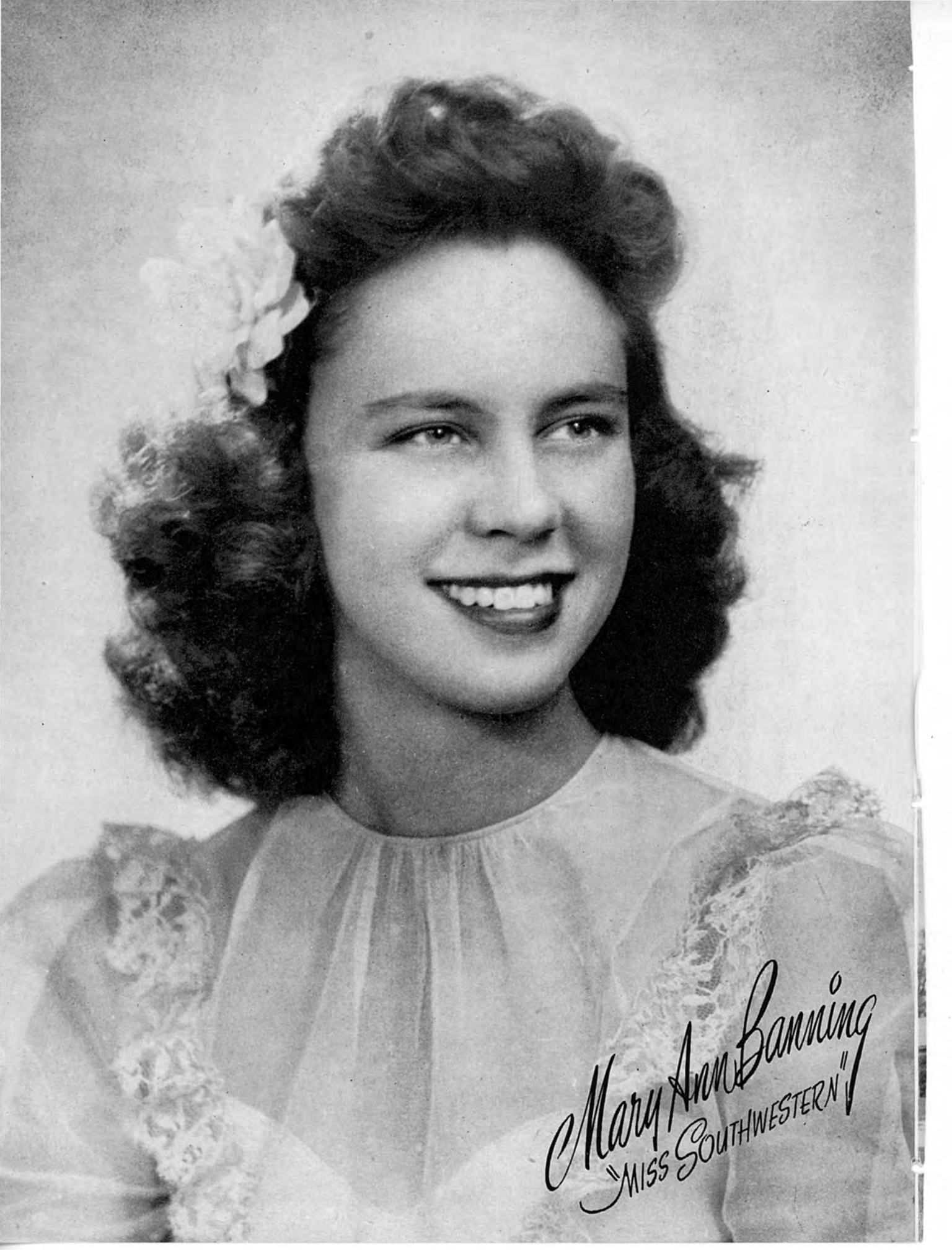






THE
SCHOOL
SELECTS





Mary Ann Banning
"MISS SOUTHWESTERN"



GINNY CRUTCHER
Most Attractive Coed



JOHNNY GIDEON
Most Popular Boy



MAYNARD FOUNTAIN
Best All-Round Boy



GINGER THOMASON
Most Stylish Coed



CURT PARHAM
Most Handsome Boy



BASKET BALL







AL CLEMENS
Coach



TAG GUITON
Center



BILL McCAIN
Forward

THE

The Lynx Cats, playing on an informal basis, won 13 out of 22 games played with service and college teams. The Cats won a series of four straight games from their rival, Memphis State.

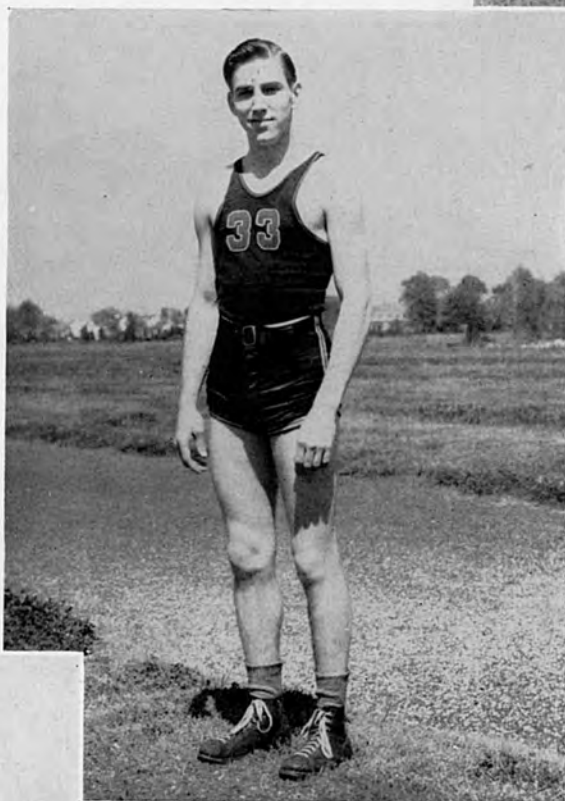
TEAM

The men forming this year's team are all new to Southwestern, no returning players from previous years were on the team. Taking this into consideration the final score of the year was outstanding.

GLENN SWINGLE
Forward



ALLEN HARRIS
Guard



ROLLIN WILSON
Guard

GIRLS BAS

Each sorority team played the best two out of three games with every other group team. The final



KAPPA DELTA Team, First Place



ZETA TAU ALPHA Team, Second Place

KETBALL

winner was Kappa Delta, who forced their way on top by a score of 11 to 10 over Zeta Tau Alpha.



DELTA DELTA DELTA Team, tied Third Place



ZETA TAU ALPHA Team, tied Third Place



ALPHA OMRICON PI Team, Fourth Place

SOUTHW

BY



"WE DO HIT THE BOOKS"



"MAMA'S LITTLE HELPERS!"



"BULLSEYE!"

WESTERN DAY



"STANDING ROOM ONLY"



"INTELLECT??"



"PARASITES??"



"Spring!"



"7 Come 11!"



"The Sign Gives the Clue"



"Grable's Competition"



"Cuttin Classes?"



"What Form!"

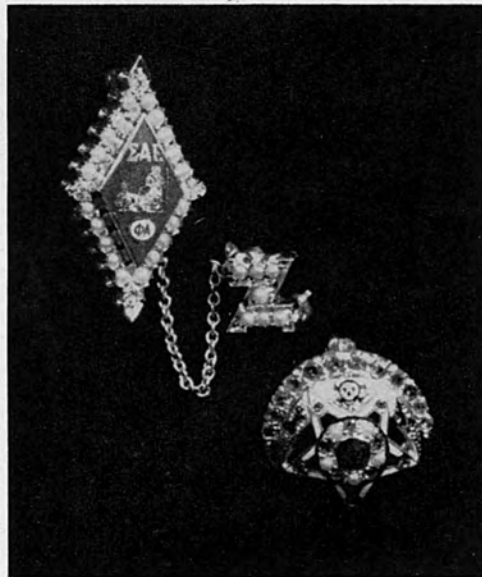


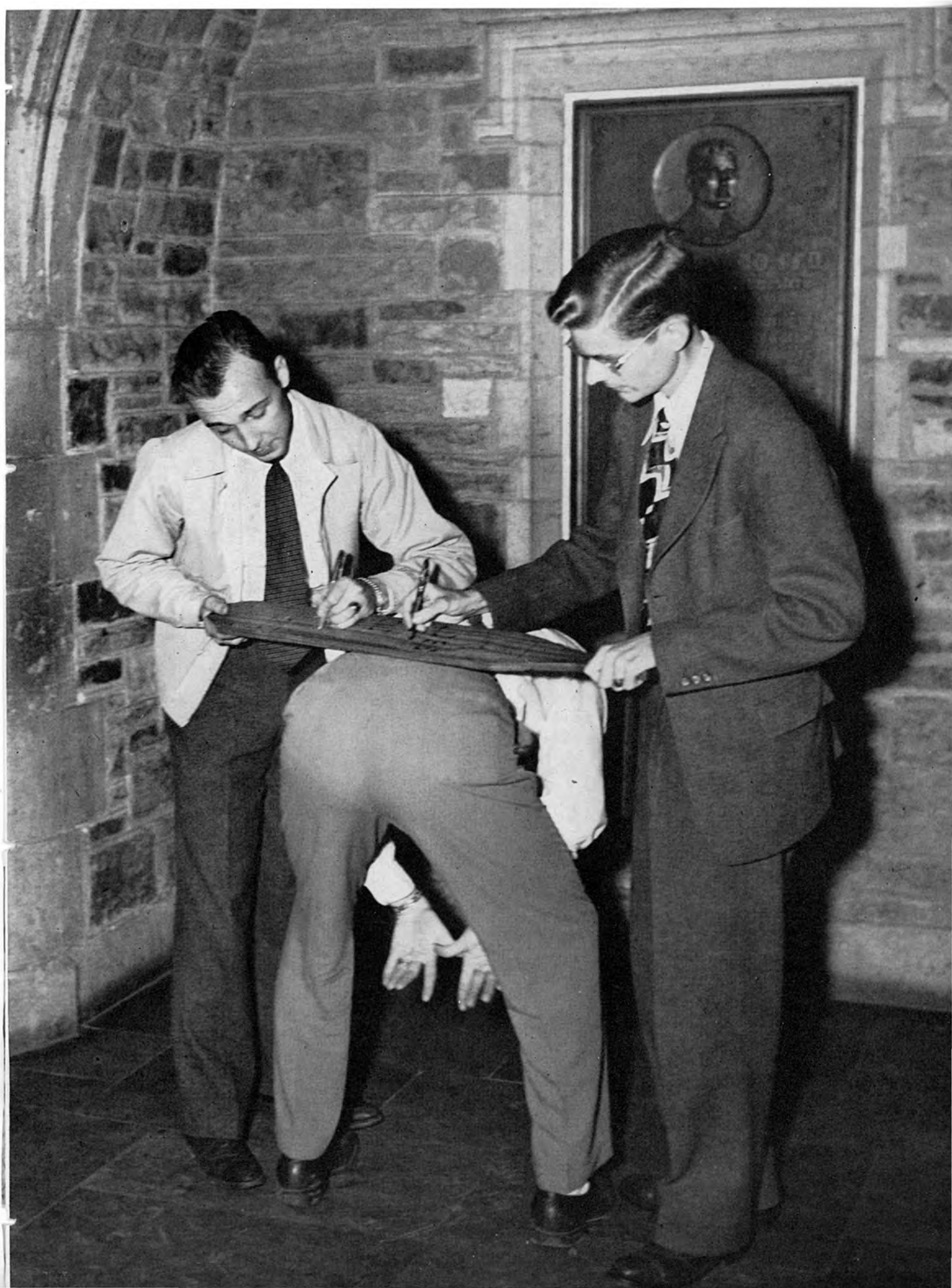
"Bicycle For Two-er, No Eight"



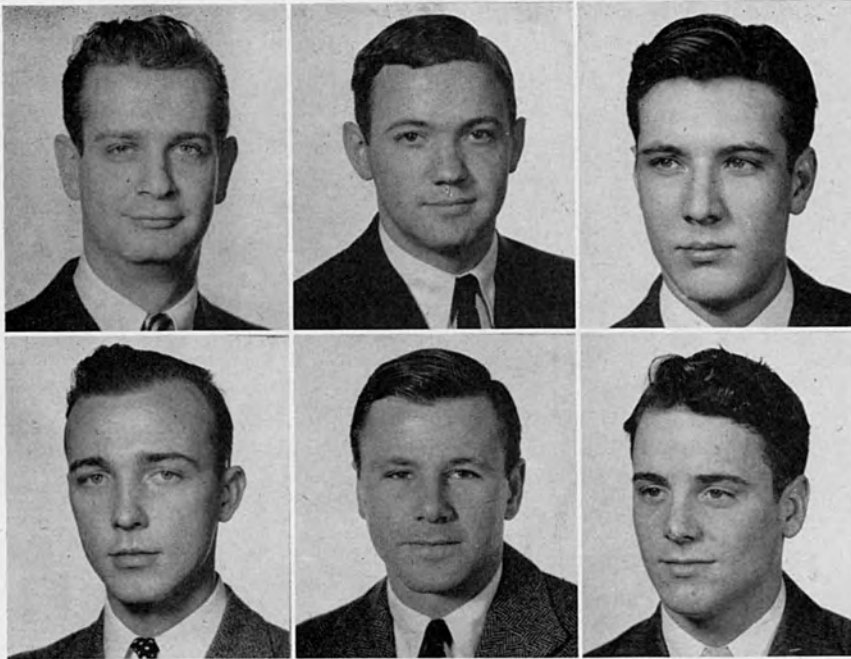
"Coming or Going?"

THE FRATERNITIES





THE MEN'S PANHELLENIC COUNCIL



OFFICERS

President (Kappa Sigma) 1st Semester EVERARDE JONES
 President (Kappa Sigma) 2nd Semester JOHN GIDEON
 Vice President (Sigma Alpha Epsilon) ED DEWEY
 Secretary (Kappa Alpha) FLETCHER SCOTT

MEMBERS

WINSTON CHEAIRS
 Sigma Alpha Epsilon

SAM BLAIR
 Kappa Alpha

The Men's Panhellenic Council is composed of representatives from the three fraternities now active on the campus. Its purpose is to exercise a measure of control over fraternity activities. The Council sponsors a Mid-Winter dance between semesters.

KAPPA SIGMA

JONES, E.
GIDEON
HENRY
BLANKENSHIP
BULLOCK



GUITON
JOHNSON
JONES, H.
McAFEE
PARK



PENTZ
STOBAUGH
SWINGLE
TURNAGE



PHI CHAPTER

Established at Southwestern in 1882

OFFICERS

FIRST SEMESTER

EVERARDE JONES
JOHN GIDEON
BILLY BULLOCK
JIM BLANKENSHIP
BILLY BULLOCK

Grand Master
Grand Procurator
Grand Master of Ceremonies
Grand Scribe
Grand Treasurer

SECOND SEMESTER

JOHN GIDEON
BOB STOBAUGH
BILLY BULLOCK
JIM BLANKENSHIP
BILLY BULLOCK

MEMBERS

1946

EVERARDE JONES
TAG GUITON

BILLY BULLOCK

1947

JIM HENRY

JOHN GIDEON

1948

JIM BLANKENSHIP
TED JOHNSON
HUGH JONES
BILLY McAFEE
MAC TURNAGE

CHARLES PARK
JIMMY PENTZ
BOB STOBAUGH
GLENN SWINGLE

SIGMA ALPHA EPSILON



DEWEY
CHEAIRS
BARRET
JONES
FOUNTAIN

BRODERICK
HAVERTY
JUSTIS
McLENDON
PARHAM

PRITCHARD
THOMPSON
UHLHORN
WILSON

TENNESSEE ZETA CHAPTER

Established at Southwestern in 1882

OFFICERS

FIRST SEMESTER

ED DEWEY
WINSTON CHEAIRS
PAUL BARRETT
MAYNARD FOUNTAIN
WM. JONES

Eminent Archon
Eminent Deputy Archon
Eminent Recorder
Eminent Treasurer
Eminent Correspondent

SECOND SEMESTER

MAYNARD FOUNTAIN
PAUL BARRETT
PAUL McLENDON
NIMROD THOMPSON
STEVE SCHILLIG

MEMBERS

1946

ED DEWEY
WINSTON CHEAIRS

PAUL BARRETT
MAYNARD FOUNTAIN

1947

WILLIAM JONES
JOHN BRODERICK
PAUL McLENDON

CURT PARHAM
VAN PRITCHARTT
NIMROD THOMPSON

1948

ROBERT HAVERTY
WILLIAM JUSTIS

TOCK UHLHORN
ROLLIN WILSON

INDEPENDENT MEN

DARNELL
COOPER
FLANIKEN
GANNON
KAKOURIS



KEISKER
McCAIN
MacGUIRE
O'NEAL
POOL



SORSBY
TUCKER
TURNER
WHERRITT



OFFICERS

REZNEAT DARNELL, PRESIDENT

MEMBERS

1945

DONALD MacGUIRE

1946

REZNEAT DARNELL
ARCHIE TURNER

CARLOS KAKOURIS

1947

DAN COOPER
ERNEST FLANIKEN

BILL McCAIN
DAYTON SORSBY

1948

CLEIGHTON GANNON
BILL KEISKER
BILLY O'NEAL

CHARLES POOL
CLIFFORD TUCKER
ROBERT WHERRITT



SOUTHW

BY N

"AH'M HUNGRY"

"THE FLEET'S IN!"

"WHY, DR. B.!"



WESTERN
WITE



"PINCHIE-WINCHIE"



"INTERM'ISSIN"

"SWEET AND LOW"





"Here Comes Everade!"



"You Don't Say!"



"That's My Man!"



"It Was Right Funny, Brod!"



"Smile a While - - - "



"Session - - - "

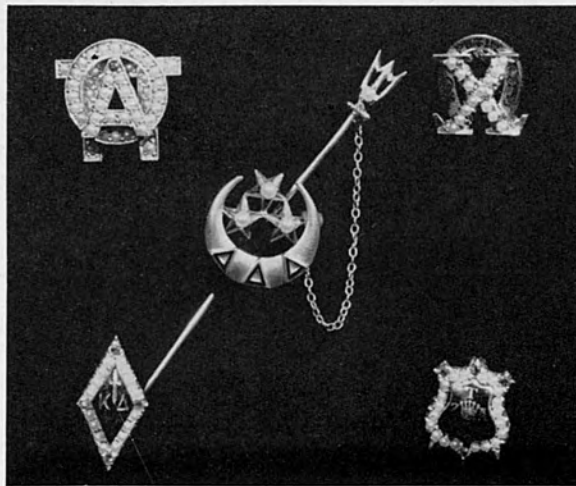


"Music, Too—"



"Positions!"

THE SORORITIES







Brief Glimpse
of
Sorority Life
on
Sou'western
Campus



"We Won, Too!"



"Pals"

"Makin With the Glamor!"

"One Meatball!"



"We Girls Do
Stick Together!"



THE WOMEN'S PANHELLENIC COUNCIL



OFFICERS

President (Kappa Delta) IMOGENE WILLIAMSON
 Vice President (Alpha Omicron Pi) TEASIE UHLHORN
 Secretary (Zeta Tau Alpha) JOY GALLIMORE
 Treasurer (Delta Delta Delta) JANE MILNER

MEMBERS

MARY ANN BANNING Chi Omega	SALLY JOHNSON Zeta Tau Alpha
ROBERTA TREANOR Kappa Delta	VIRGINIA WADE Delta Delta Delta
PAT QUINN Alpha Omicron Phi	NANCY KIZER Chi Omega

The Women's Panhellenic Council consists of two representatives from each sorority. It supervises sorority rushing and meets once a month to discuss problems of the women's social organizations on the campus. Once each fall the Council gives a Women's Panhellenic Dance.



UHLHORN
BIGGER
SILER
BARRON
BEGGS



BOWDEN
BRADSHAW
BRUCE
COOKE
CONN



FLOYD
FONDREN
HANCOCK
HERNDON
IGOUE



JAMES
JETER
LONG
QUINN
PAGE



PRIDGEN
REINHARDT
SEAY
SHEA
SHEPHERD



SPALDING
STEWART
WALKER
WELLFORD
WHITSITT

ALPHA OMICRON PI

KAPPA OMICRON CHAPTER

Established at Southwestern in 1925

OFFICERS

FRANCES UHLHORN	President
JANE BIGGER	Vice-President
NANCY SILER	Corresponding Secretary
BEVERLY BARRON	Recording Secretary
JANE TREADWELL	Treasurer

MEMBERS

1945

FRANCES UHLHORN
GLADYS MOORE ELLIS

BEVERLY BARRON

1946

JANE BIGGER
NANCY SILER
ANN BRADSHAW
NANCY CONN
VADIS JETTER

PAT QUINN
JANE TREADWELL
GLORIA WALKER
ANN MORMAN

1947

TRUDY BRUCE
CAROLYN COOKE
PEGGY FLOYD
ANN PRIDGEN
DOROTHY PARK REINHARDT

GEAN SHEPHERD
BETTY LEE HANCOCK
CLAIRE JAMES
JOYCE SPALDING
PHYLLIS WELLFORD

1948

LILY ANN BEGGS
BARBARA BOWDEN
MARY JOYCE FONDREN
GLENN HERNDON
GEAN IGOU
BETTYE LONG

JO ALICE PAGE
HILMA SEAY
BETTY SHEA
SUZANNE STEWART
BETTY WHITSITT
DOROTHY WEST





WILLIAMSON
BAILEY
TRENOR
HALL
WIGGINS



AUSTIN
BARNES
BELK
BURKETT
BURKS



CONLEY
CONNER
COOK
DAVIDSON
DE MERE



DOWLING
GERALD
HARTHCOCK
HARTLEY
JOLLY



KEATON
KELTON
KRAUCH
KUHLMANN
LANGMEAD



MANN
McDEARMAN
NASH
ORGAIN
PARSONS



SPELLINGS
THOMAS
WEBB

ALPHA OMICRON PI

KAPPA OMICRON CHAPTER

Established at Southwestern in 1925

OFFICERS

FRANCES UHLHORN	President
JANE BIGGER	Vice-President
NANCY SILER	Corresponding Secretary
BEVERLY BARRON	Recording Secretary
JANE TREADWELL	Treasurer

MEMBERS

1945

FRANCES UHLHORN
GLADYS MOORE ELLIS

BEVERLY BARRON

1946

JANE BIGGER
NANCY SILER
ANN BRADSHAW
NANCY CONN
VADIS JETTER

PAT QUINN
JANE TREADWELL
GLORIA WALKER
ANN MORMAN

1947

TRUDY BRUCE
CAROLYN COOKE
PEGGY FLOYD
ANN PRIDGEN
DOROTHY PARK REINHARDT

GEAN SHEPHERD
BETTY LEE HANCOCK
CLAIRE JAMES
JOYCE SPALDING
PHYLLIS WELLFORD

1948

LILY ANN BEGGS
BARBARA BOWDEN
MARY JOYCE FONDREN
GLENNA HERNDON
GEAN IGOU
BETTIE LONG

JO ALICE PAGE
HILMA SEAY
BETTY SHEA
SUZANNE STEWART
BETTY WHITSITT
DOROTHY WEST





WILLIAMSON
BAILEY
TRENOR
HALL
WIGGINS



AUSTIN
BARNES
BELK
BURKETT
BURKS



CONLEY
CONNER
COOK
DAVIDSON
DE MERE



DOWLING
GERALD
HARTHCOCK
HARTLEY
JOLLY



KEATON
KELTON
KRAUCH
KUHLMANN
LANGMEAD



MANN
McDEARMAN
NASH
ORGAIN
PARSONS



SPELLINGS
THOMAS
WEBB

KAPPA DELTA

ALPHA DELTA CHAPTER

Established at Southwestern in 1925

OFFICERS

IMOGENE WILLIAMSON	President
ANNE HOWARD BAILEY	Vice-President
ROBERTA TREANOR	Secretary
ANNABELLE HALL	Treasurer
BERNIECE WIGGINS	Editor

MEMBERS

1945

IMOGENE WILLIAMSON	LEE CONLEY
ANNE HOWARD BAILEY	ESTELLE KUHLMANN

1946

ROBERTA TREANOR	LUCY GERALD
ANNABELLE HALL	BETTY HARTLEY
BERNIECE WIGGINS	AUDREY KRAUCH
BETTY BELK	BETTY BYNUM WEBB

1947

DOTTIE BARNES	JANE MANN
ANN BURKETT	MARY McDEARMAN
JANE DAVIDSON	MARY ANN NASH
EVELYN DOWLING	RUBY ORGAIN
FRANCES KEATON	PEGGY PARSONS
MARY LANGMEAD	NAIDA THOMAS

1948

MARGARET AUSTIN	MARGARET HARTHCOCK
FRANCES BURKS	FREDA JOLLY
ANNE CONNER	MARGARET KELTON
GLORIA COOK	ELSIE SPELLINGS
LEONA DE MERE	





GALLIMORE, J.
JOHNSTON
MORGAN
GIBBINS
EMMONS



ANDERSON
AUSTIN
BLACKWELL
BURNETT
CHESTER



CLAWSON
FULLER
FISH
GALLIMORE, P.
GUICE



GURGANUS
HARDWICK
HESSELBEIN
HOGAN
HORTON



LAGUZZI
MAJOR
McCALLUM
ORTMEYER
PARKS



RALSTON
RATTAN
RECORD
RHEA
ROBINSON



SADLER
SIVITER
SODERSTROM
SUMRALL
TATE



UTLEY
VACCARO

ZETA TAU ALPHA

BETA SIGMA CHAPTER

Established at Southwestern in 1929

OFFICERS

JOY GALLIMORE	President
SALLY JOHNSTON	Vice-President
EMILY MORGAN	Secretary
VIRGINIA GIBBINS	Treasurer
VIRGINIA EMMONS	Historian

MEMBERS

1945

JOY GALLIMORE
SALLY JOHNSTON
EMILY MORGAN

VIRGINIA EMMONS
ALICE SIVITER
JANE SODERSTROM

1946

VIRGINIA GIBBINS
JUNE GUICE

TEXAS HORTON
ADELAIDE RATTAN

1947

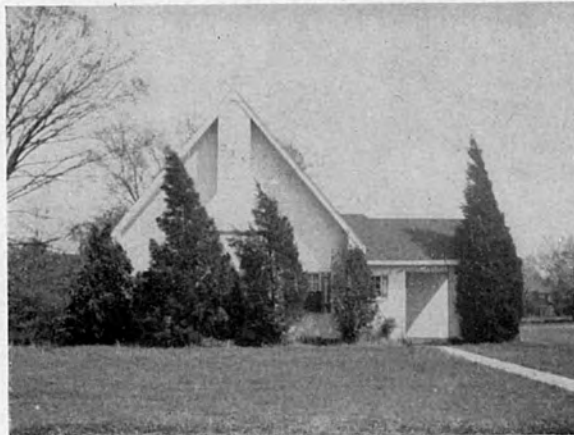
WINNIE ANDERSON
FRANCES FISH
CAROL HESSELBEIN
DOROTHY HOGAN

POLLY LAGUZZI
SARA GREY McCALLUM
MARY LOU ORTMEYER
MARY LOUISE RHEA

1948

BETTY JO AUSTIN
SUE MAE BLACKWELL
BARBARA BURNETT
JULIA CHESTER
JEANNE CLAWSON
GUERLAYNE FULLER
PEGGY GALLIMORE
FLOY GURGANUS
MARGARET HARDWICK
MARY JANE MAJOR

PATRICIA PARK
SARA RALSTON
KATIE RECORD
NANCY LEE ROBINSON
SUSANNE SADLER
GENIE SUMRALL
WESTY TATE
RACHAEL UTLEY
MARY ELLEN VACCARO





BANNING
SCHILLIG
KIZER
PHARR
BAILEY



BARBER
BEANE
BUXTON
CARROLL
CRUTCHER



CUNNINGHAM
CURRIER
EVANS
FIELD
FRANKS



GOOCH
HAMER
HARDING
GORDON
KNIGHT



KYSER
MAURY
McCORMICK
McMAHON
MATHEWES



METZGER
MORAN
OGDEN
PAINE
PERKINS



ROBERTSON
SWEPSTON
THOMASON
THOMPSON
WADDELL
WALKER



WALLACE
WELLFORD
WILBOURN
WILLIAMSON
WILSON
WOODS

CHI OMEGA

KAPPA BETA CHAPTER

Established at Southwestern in 1922

OFFICERS

MARY ANN BANNING	President
JO SCHILLIG	Vice-President
NANCY KIZER	Secretary
KITTY GREY PHARR	Treasurer

MEMBERS

1945

MARY ANN BANNING
GINNY CRUTCHER
LOUISE MORAN

MINOR ROBERTSON
JO SCHILLIG

1946

MARIE GOOCH
NANCY KIZER
DOROTHY SCHMIED KNIGHT
PATSY MATHEWES
NANCY McMAHAN

KITTY GRAY PHARR
LOUISE WILBOURN
EMILY WILLIAMSON
JEAN WILSON

1947

MARY McFALL BUXTON
DUDLEY FIELD
MINNIE LEE GORDON
TEMPE KYSER
MARY ANN METZGER
FRANCES PERKINS

FLORENCE SWEPSTON
BARBARA THOMPSON
IRMA WADDELL
MAY WALLACE
JULIA WELLFORD
NANCY WOODS

1948

CAMILLE BAILEY
BETTY BARBER
BEVERLY BEANE
MARTHA CARROLL
CAROLYN CUNNINGHAM
MARY BELLE CURRIER
TEENIE EVANS
TAYLOR FRANKS

LUCILLE HAMER
MARNEE HARDING
LUCILE MAURY
NANCY McCORMICK
JANE OGDEN
JANIE V. PAINE
VIRGINIA THOMASON
MADELON WALKER





MILNER
WELDON
HYDE
WOODSON
WILKINSON
ALEXANDER



ALMEDA
BARBOUR
BARTH
BOUTON
BRENT
BROWN, H.



BROWN, K.
BUFORD
CARTWRIGHT
CHAUNCEY
CONWAY
CRUTCHFIELD



DICKSON
ESTES
FIELD, G.
FIELD, M.
FRANK
GANIER



GIDEON
GULO
HOLT
HORD
KILVINGTON
LAY



LAWO
LYNCH, K.
LYNCH, M. F.
MORRIS
O'HEARNE
PEOPLES



RITNOUR
ROE
SCOTT, A.
SCOTT, N.
SHELTON
SIMMONS



SMITH
THORNTON
WADE
WILLIAMS
WOOLFOLK, B.
WOOLFOLK, P.

DELTA DELTA DELTA

DELTA PSI CHAPTER

Established at Southwestern in 1931

OFFICERS

JANE MILNER	President
ANNE WELDON	Vice-President
ANITA HYDE	Recording Secretary
MARIANNA WOODSON	Corresponding Secretary
BETTY JEAN WILKINSON	Treasurer

MEMBERS

1945

JANE MILNER
ANNE WELDON
ANITA HYDE
MARIANNA WOODSON

BETTY JEAN WILKINSON
GENE DICKSON
MARGIE FIELD
MARY FRANCES LYNCH

1946

MARY LOU ALMEDA
SARAH BARTH
WARRENE BUFORD
DOROTHY CHAUNCEY
JUNE CRUTCHFIELD
GARNET FIELD
LUCY LEE GANIER

MARTHA JO GULO
MAURINE HOLT
JEANETTE HORD
BETTY LAY
JEAN LAWO
BETTY JOY SMITH
VIRGINIA WADE

1947

NANCY JEAN ALEXANDER
BETTY BOUTON
NORMA ESTES
LOUISE FRANK
MARY GIDEON
KATHRYN LYNCH

CAROL MORRIS
ALICE SCOTT
NANCY SCOTT
JANE WILLIAMS
BETTY WOOLFOLK
PEGGY WOOLFOLK

1948

IRENE BARBOUR
AMELIA BRENT
HAZEL BROWN
KATHERINE BROWN
VIRGINIA CARTWRIGHT
ANN CONWAY
JANE KILVINGTON

JEANNE O'HEARNE
VIRGINIA PEOPLES
ELISE RITNOUR
MARY SUE ROE
NORMA SHELTON
BETTYE JUNE SIMMONS
JO THORNTON





BOONE
EINSTEIN
De GRAFFENREID
BRANTLEY
BROWN



CAMMER
COGSWELL
COLE
DALE
EVENSKY



EZELL
GOODMAN
HUGHES
JETTER
KELLEY



LAMPP
LAZAROV
PACE
PRETTYMAN
ROBINSON



ROTHER
SHANKMAN
SHEFSKY
STEVENSON
WILLIAMS



WONG, H.
WONG, K.

INDEPENDENT WOMEN

OFFICERS

MABEL BOONE	President
TERRY EINSTEIN	Vice-President
JEANNE DE GRAFFENREID	Secretary
BETTY JO BRANTLEY	Treasurer

MEMBERS

1945

BETTY EZELL
ELIZABETH JETTER

PEGGY LAMPP
SYLVIA SHANKMANN

1946

TERRY EINSTEIN
GLORIA SHEFSKY

JACQUELINE GOODMAN

1947

MABEL BOONE
JEANNE DE GRAFFENREID
DOROTHY CAMMER
BETTY DALE
LAVERNE LAZAROV

VIRGINIA PRETTYMAN
SUE ROBINSON
ANNA LOUISE ROTHER
HELEN WILLIAMS

1948

BETTY JO BRANTLEY
DOROTHY BROWN
JOAN COGSWELL
COZETTE COLE
LAVERNE EVENSKY
JANE HUGHES

MARY EMMA KELLEY
MARGARET PACE
KATHERINE STEVENSON
HELEN WONG
KATIE WONG

OUR
ADVERTISERS

Fine Craftsmanship

throughout the entire production of the book assures you of an outstanding annual.

Efficient Service

is interpreted by us to mean on-the-spot assistance which reduces the usual year book worries to a minimum . . .

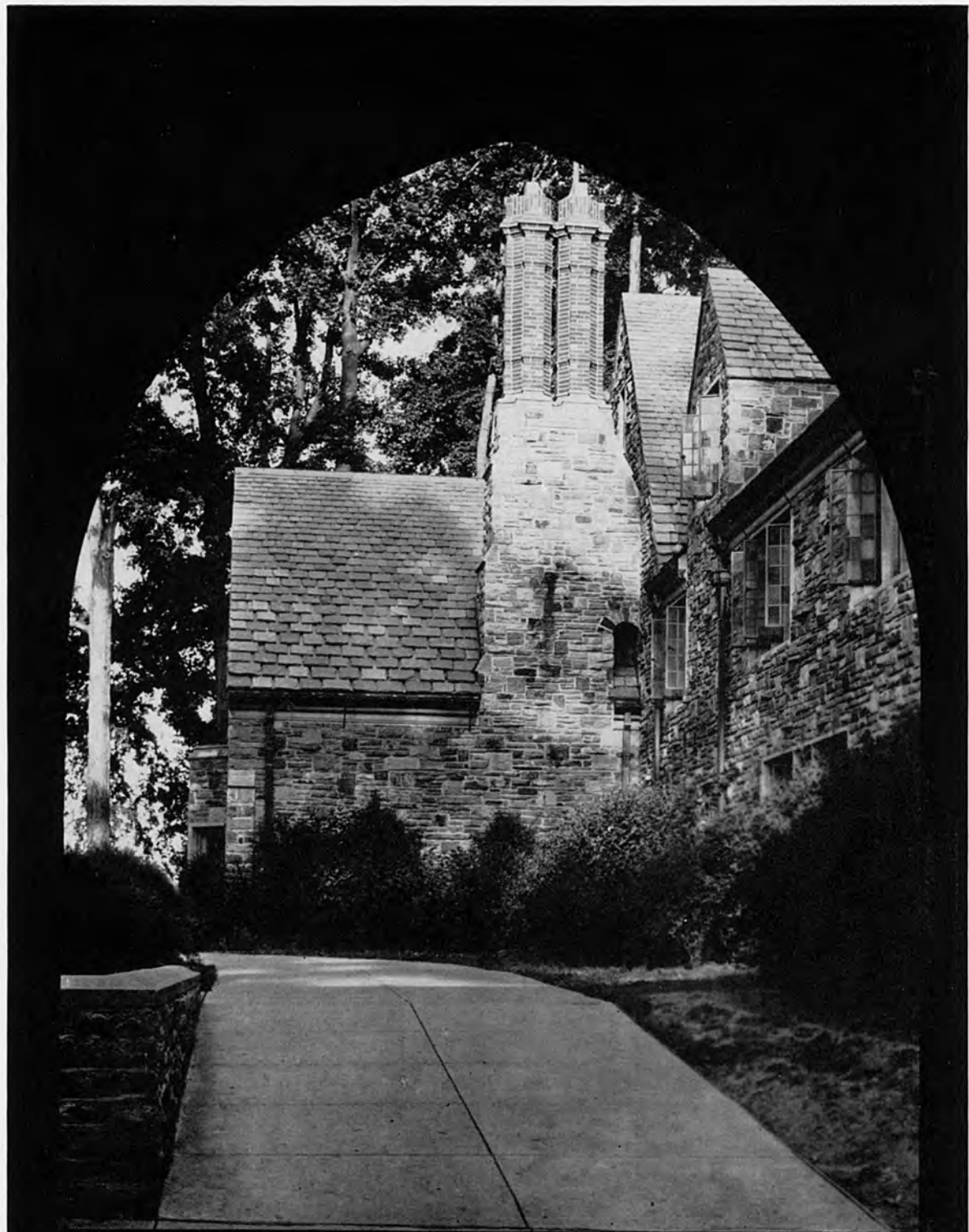
Pleasant Relationships

make the task of producing a fine annual an instructive and memorable experience for every member of the staff . . .

THE STANDARD PRINTING AND SUPPLY COMPANY

307 MADISON AVE. • MEMPHIS

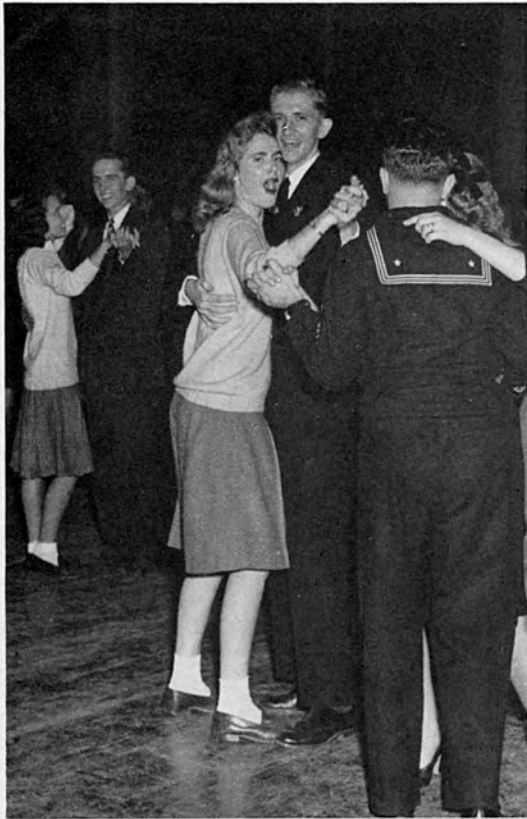
CREATORS OF FINE ANNUALS



ARTISTS • PHOTOGRAPHERS • ENGRAVERS

BLUFF CITY ENGRAVING CO. INC.

120 MADISON AVE. • MEMPHIS, TENN.



Compliments of

**T. J. WHITE &
COMPANY**



COTTON

Compliments of

F. G. Barton Cotton Co.

Cotton Factors

Memphis, Tenn.

Caffey Robertson

Export - Merchants - Domestic

Memphis 3, Tenn. - U. S. A.

Compliments

ANDERSON, CLAYTON & CO.

COTTON MERCHANTS

Lesser Cotton Co.

St. Louis

Memphis

Compliments

WILBOURN BROS.

★

COTTON

B. E. Boothe & Company

Cotton Merchants

Memphis, Tenn.

Compliments of

COOK & COMPANY

★

COTTON



HEADQUARTERS FOR SCHOOL PINS, RINGS, FRATERNITY JEWELRY

The Gift Centre of the South

The Brodnax name on the
box adds much to the value
but nothing to the cost.



GEO. T. BRODNAX, INC.

Jewelers • Main at Monroe • MEMPHIS



READY TO WEAR
ACCESSORIES
MILLINERY
FINE SILVER AND GIFTS

The **HELEN** *Shop*

1808-1818 UNION AVE.—MEMPHIS 4, TENNESSEE



Compliments of

Southern Bowling Lanes, Inc.

Compliments of

SOUTHERN LEATHER CO.

Compliments of

A. Winkler's Bakery

1331 Overton Park

Always A Grand Time!

Nightly Dancing to
Nationally Famous Orchestras!

Dinner Every Evening!

THE BALINESE ROOM

**CLARIDGE
HOTEL**

Household Specialties on Installments

L. B. Price Merc. Co.

1334 Overton Park Ave.

Phone 2-1274

OAK HALL

Clothiers and Furnishers

to

Particular
University
Men



Since 1859



Compliments of

**Southwestern
Beauty Salon**

H. L. Guion Co.

Real Estate - Insurance

For 76 Years

Best Wishes to the
Graduates!



**SAM FORTAS
Housefurnishing Co.**

145 No. Main St.

5-3515

ORGILL BROTHERS and CO.

Wholesalers Hardware

Founded 1847 by William & Edmund Orgill

Memphis, Tenn.

Jackson, Miss.

Compliments
of
D. Canale and Co.

Owen Radio & Refrigerator Co.

1367 Madison Ave.

Service on any make of
Radio or Refrigerator

Day 2-0426

Night 48-2066



Compliments
of
Hotel Peabody

Compliments of
**Charles N. Tigrett
Studio**

Towers Building
1503 Union



Compliments
of
The Florist Club
of
Memphis

Compliments
of
University Park Cleaners



"A GOOD DAILY HABIT"

Every day you'll find jolly crowds from Southwestern enjoying good things to eat and drink at one of the two Fortune's

Fortune's Belvedere
Fortune's Jungle Garden

Compliments of
GUARANTY MORTGAGE & TRUST CO.
Mortgage Loans
and
METCALF BROS.
GUARANTY INSURANCE AGENCY
Fire and Casualty Insurance

Joyner-Heard Company
Investment Bankers

All Types of Real Estate Loans

550 Commerce Title Bldg.

Phone 5-2434

Fresh Meats, Produce
Fancy and Staple Groceries

Easy-Way No. 19

605 N. McLean

Compliments of

Elite Beauty Shop

Billie Scott, Mgr.

PHIL A. HALLE

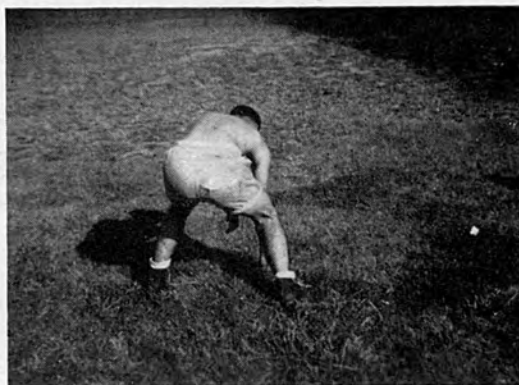
Exchange Building

Recognized as the South's Style Creating Clothiers, Haberdashers, Hatters
Booterers, and Custom Shirt Makers to Particular
University Men and Women

John Barbee

Union at Belvedere

Tires Batteries



Portraits and Commercial

Schools a Specialty

Rodgers Studio

1626 Union

Phone 7-4680

Paul's Shoe Store

101 So. Main St.



Buy and Keep

War Bonds

For Music and News . . .

WHBQ

Your Mutual Friend

Top Flight Bands—Noted Commentators

1400 On Your Dial, South's 24-Hour Station

James D. Collier & Co.

Insurance

503-04 First National Bank Bldg.

Phones 8-5831 & 8-5832

Memphis, Tenn.

JULIUS LEWIS

145-151 S. MAIN ST. — NEXT DOOR TO HOTEL GAYOSO



Home of Hart Schaffner & Marx Clothes



To the entire Class of '45 we extend our sincere Best Wishes for your future Happiness—and invite you to visit our store.

Perel & Lowenstein
THE DIAMOND STORE OF THE SOUTH

CLASS RINGS
CLASS PINS

CLUB PINS
TROPHIES

Large Assortment of Novelty Jewelry

Sears Congratulates the Class of 1945



Sears congratulates you, the graduating class of 1945, on your completion of your college course and wishes you success and happiness in your chosen work.

495 NORTH
CROSTOWN

SEARS

MEMPHIS
RETAIL STORE

Wishing Every Southwestern Student
SUCCESS and PROSPERITY

**Leo Kahn Furniture
Company**

Compliments of

De Soto Hardware Co.

Austin Carey, Pres.

Cooper Typewriter Co.

FACTORY DEALERS

New and Used
Typewriters—Adding Machines
Office Furniture
Desks—Files—Chairs

All Makes Overhauled

97 S. Second St.

8-3227

Elizabeth's Dresses

1670 Union Ave.

Mrs. Jean Meacham

7-0684

Drink

Coca-Cola

In Bottles

For a Smart Choice . . . the

Geo. W. Hayley Studio

PORTRAIT PHOTOGRAPHY

751 Poplar

Phone 5-1927



Pickin' Cotton?

From lecture to "lights out" you'll pick these crisp, cool charmers in fiesta flavored and garden colors. Cottons that are checked for chic, softly striped, and gayly printed with "sweet and low," necklines, short order sleeves, flared, casual and dirndl skirts.

Cotton dresses start at \$4.98

MANGEL'S

Feminine Apparel

51 N. Main St.



Compliments of

Ted I. Lewis

COTTON

112 S. Front St. Memphis, Tenn.

Compliments of

Dalrymple Cotton Co.

Spot-Cotton Brokers

Memphis, Tenn.

Compliments of

NAVY YARD COMPRESS

*After ALL . . . There's NO Other Store Quite Like BJR
. . . A Men's Wear Store of Quality and Personal Service*

Bearley Bros. Jones. Ragland

★ 99 SOUTH MAIN STREET ★

You Are Invited to Open a Convenient BJR Charge Account

STRATTON-WARREN HARDWARE CO.

Wholesale Exclusively

Memphis - - - - - Tennessee

★

DISTRIBUTORS OF SHELF AND HEAVY HARDWARE

Unit Stoves, Heaters and Ranges, Hot Point Electric Refrigerators,
Vulcan and Chattanooga Plows, Bendix and Sentinel Radios,
Sporting Goods, Red Jacket Pumps, Water Systems
and Water Conditioners

★

— Manufacturers —

HARNESS, COLLARS AND LEATHER GOODS

★

STRATTON-WARREN HARDWARE CO.

Liberal Real Estate Loans
Fire, Automobile and General Insurance

E. H. CRUMP & CO.

North Memphis Savings Bank Bldg.

6-3683

The South's Largest Direct Writing Insurance Agency

ATTENTION

HIGH SCHOOL AND COLLEGE GRADUATES

★ EARN WHILE YOU LEARN

★ CLEAN WORK

★ GOOD WAGES

★ PLEASANT SURROUNDINGS

The Carbide and Carbon Chemicals Corporation near Knoxville, Tennessee, will train high school graduates, male and female, for a skilled production job. No previous work experience necessary.

★ TYPISTS

★ STENOGRAPHERS

★ COMPTOMETER OPERATORS

Accepted Without Previous Work Experience

Dormitory accommodations and meals available at reasonable rates.

Complete recreation program provided, including ball teams, bowling leagues, picture shows and social activities.

Apply Immediately at Your Nearest

UNITED STATES EMPLOYMENT SERVICE

or Mail Application to:

Mr. J. J. Maroone,
Carbide & Carbon Chemicals Corporation,
520 Western Avenue,
Knoxville, Tennessee

SHOBE, Inc.



and

The New Neutral Color

HEARING AID



Aren't you GLAD you went to
Southwestern?

GEO. T. ROY, INC.
JEWELER

Geo. T. Roy
44 So. Main St.

Martin P. Hood
Phone 8-3869

**CALL ORKIN
TODAY**

There is no need to tolerate unsanitary
conditions in the home. Orkin will quickly
rid your home of insect pests and vermin.

CALL 8-7311

No Charge for Inspections and Estimates

"BUY MORE WAR BONDS"

Our Most Important Service

Customer Protection

in

Greater-Heating-Power

COAL

and

Pure-Taste-Free

ICE

**BROADWAY
COAL and ICE Co.**

Phone 9-1511

W. W. Simmons Jr.
Manager

Farrell Calhoun Co.

PAINTS AND WALLPAPER

22-24 South Second



Choice of Discriminating Southerners Since 1864

Engraved Calling Cards

- Thank-You Notes
- Invitations and Announcements
- Personalized Fine Writing Papers
- Personalized Napkins for Graduates' Parties

*Also Greeting Cards
for All Occasions*

Social Stationery Section

TOOF

S. G. Toof & Co., 195 Madison

Printers • Lithographers • Stationers • Office Outfitters

All Portraits

IN THIS PUBLICATION

by

E. H. JAFFE, *Photographer*

160 UNION AVENUE ★ MEMPHIS, TENNESSEE

Phone 5-0494

•

If No Answer Call 2-6855

Specializing in

PRESS AND COMMERCIAL PHOTOS

WEDDINGS AND PORTRAITS

HOME SITTINGS



SOUTHWESTERN

MEMPHIS, TENNESSEE

A Standard College of Arts and Sciences
A College of High Ideals and Personal Attention

The greatest thing about a college is the character and ability of its instructors. A grateful pride felt in the faculty of Southwestern. The greatest care has been used in the selection of these men. They are all Christian men of sound scholarship and they are great teachers.

The architecture is of the collegiate Gothic type and the plant is entirely modern, beautiful and enduring.

Nothing has been spared that contributes to the highest good and efficiency of the individual student, and as a result Southwestern offers unusual advantages.