

THE
LYNX



1946

The Lynx



SOUTHWESTERN AT MEMPHIS

1946

Southwestern

Today and Tomorrow

CONTENTS

CLASSES

ORGANIZATIONS

FEATURES

ATHLETICS

FRATERNITIES

SORORITIES

EDITORIAL STAFF

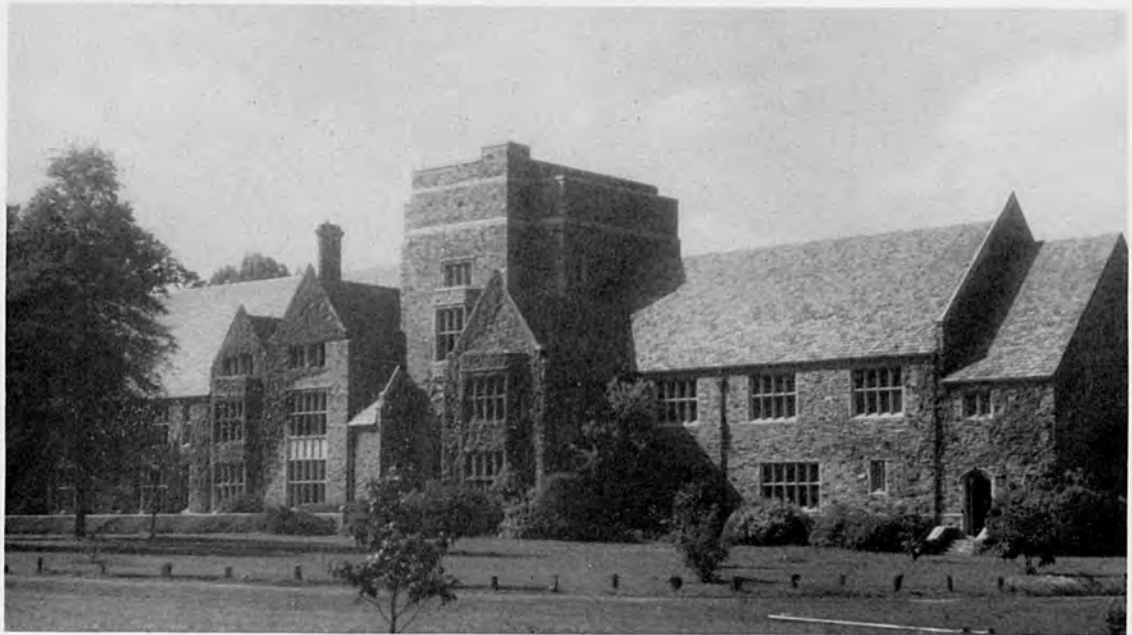
Editor	IRMA WADDELL
Business Manager	TAYLOR FRANKS
Assistant Editor	LILY ANNE BEGGS
Assistant Business Manager	VIRGINIA ANN WITHERS



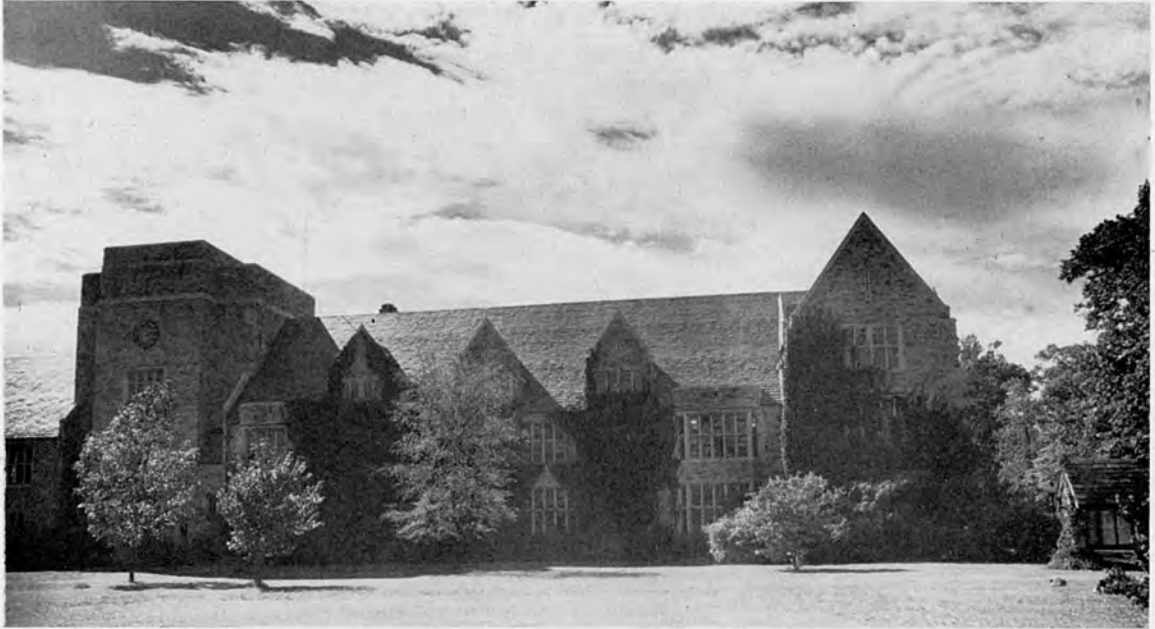
ENTERING SOUTHWESTERN TODAY



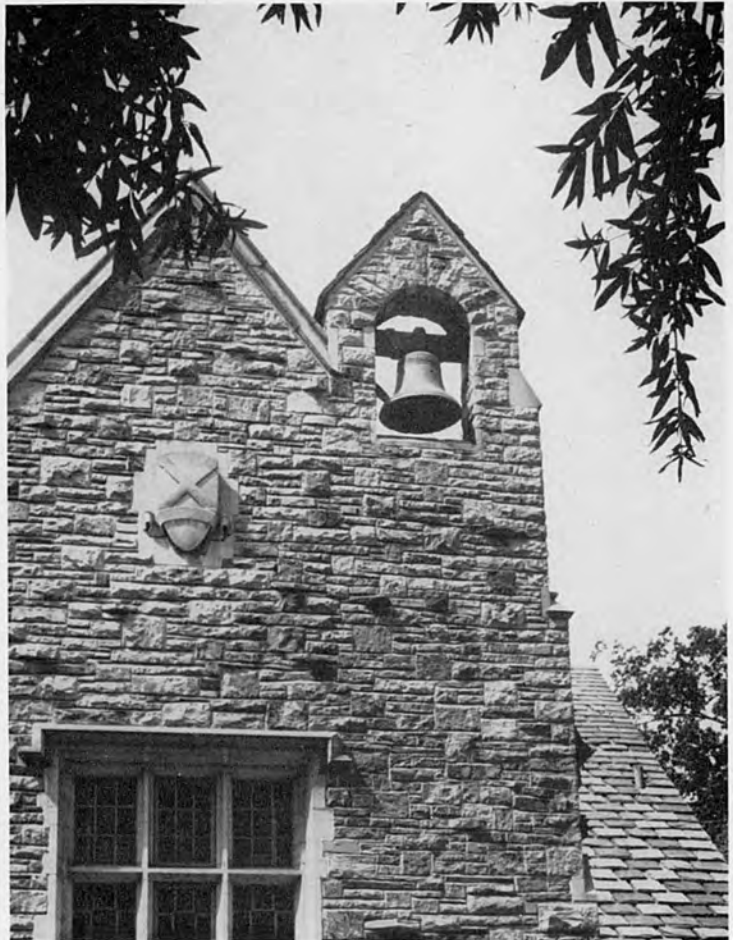
SCIENCE HALL



SOUTH OF PALMER HALL



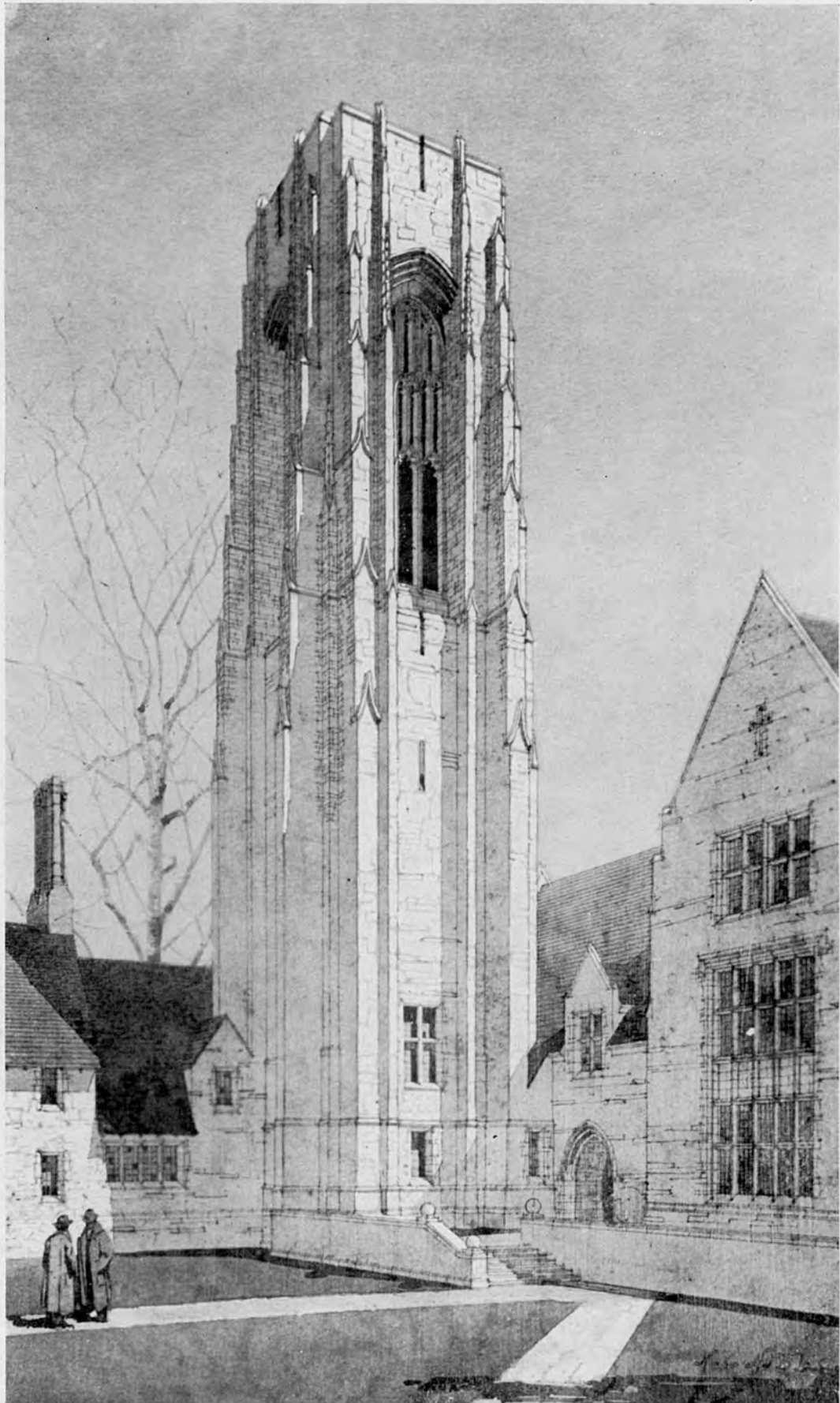
NORTH OF PALMER HALL



BELL TOWER

Looking Toward The Future:

Southwestern Tomorrow



MEMORIAL BELL TOWER



SOUTHWESTERN-

1. Men's Dormitory
2. President's House
3. Memorial Bell Tower
4. Administration Building

5. Chapel
6. Library
7. Women's Dormitory



-AS IT IS TO BE

- 8. Liberal Arts Building
- 9. Student Union and Alumni Hall
- 0. Science Building

- 11. Dining Hall
- 12. Kitchen
- 13. Speech Building
- 14. Gymnasium



DEDICATION

To the memory of

MAJOR WILLIAM NEELY MALLORY

1901-1945

Athlete Citizen Soldier

Friend, Director, and Treasurer

of Southwestern

"He personified the ideals of Southwestern,
Genuineness and Excellence"



To the Class of 1946:

The sudden cessation of hostilities last summer filled all of us with an exhilarating sense of gratitude and of hope. Deep scars remained, for some of our number, like that great soul to whom this "Lynx" is dedicated, would never return, and some who returned would be maimed, but the others would be back before long, and forty-five nations were signing the United Nations Charter. To this country, which had not been devastated, the future beckoned with unique opportunities and responsibilities. The lights were coming on again, but they revealed a vastly different world.

New conditions and grave problems of a political, economic, social, and moral nature are facing us. Never was the world's need so great. Everywhere there are ruined cities, homeless multitudes, shivering children, hungry families, looking to this country, which, in the providence of God, has been given the responsibility for world leadership, for relief, rehabilitation, and recovery. Henceforth, it must be **one** world or no world at all. Intelligent goodwill, courage, patience, and strong faith in our Heavenly Father and His Eternal Purpose for mankind are required for the building of a decent, cooperative world. The practice of the Christian philosophy of life, to which Southwestern students are not strangers, is our one hope for a just and enduring peace.

Upon only five out of the 107 men who entered the freshman class in September, 1942, will degrees be conferred in June, 1946, but many more of these 107 men have now returned to Southwestern from the armed services, and will graduate later. To all of these, to other men who are graduating, as well as to the women, to whom degrees will be awarded this year, we wish to extend our greetings, our good wishes, and our affectionate regard. We express the earnest hope that they, and we, despite the confusions of these perilous times, may find it a great time to be alive, because we are helping to lay those spiritual foundations upon which alone the City of God can be built.

Chas. E. Diehl,



CHARLES E. DIEHL, A.M., D.D., LL.D.
President of Southwestern

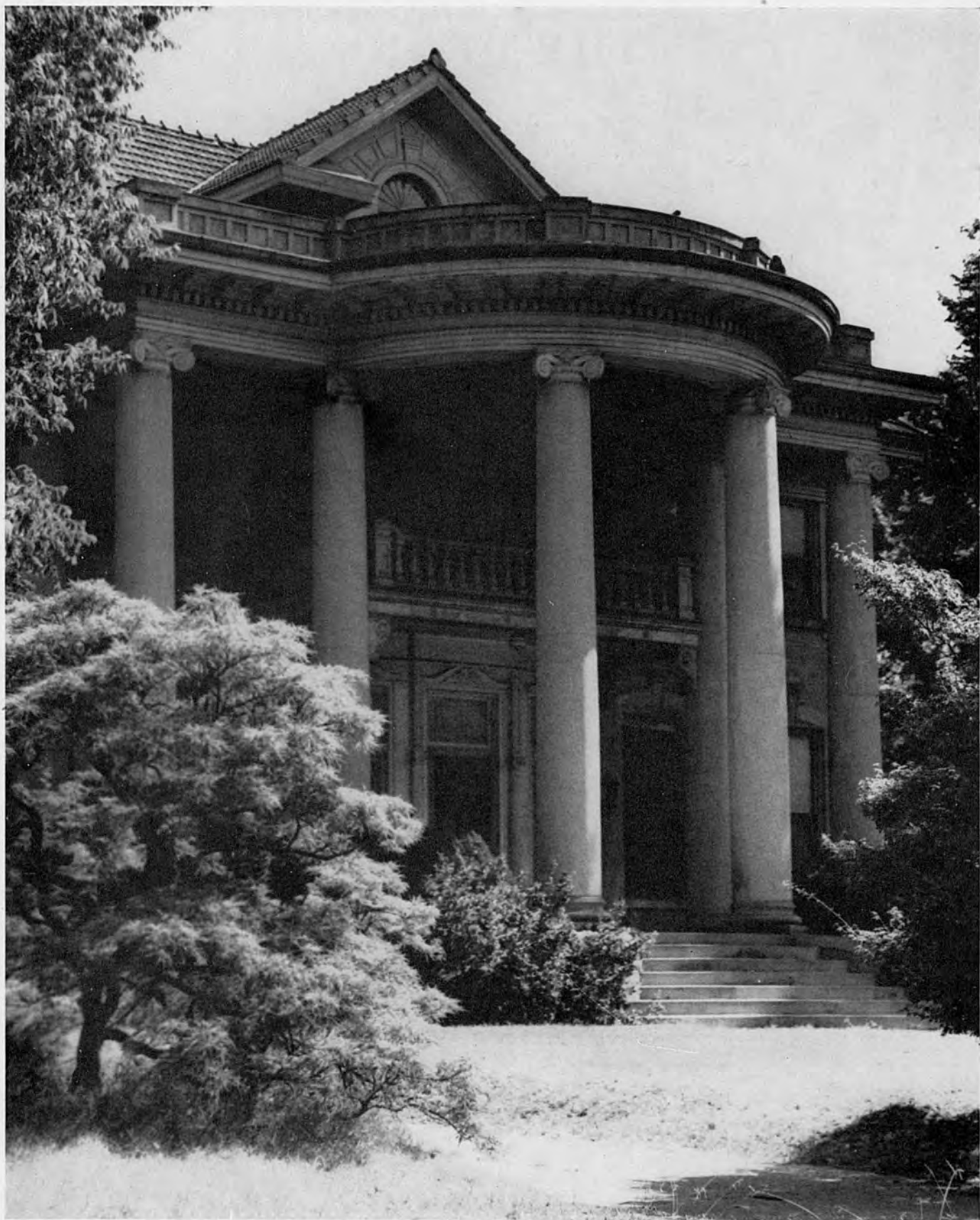
MEMPHIS COLLEGE OF MUSIC

The Music Department of Southwestern

The Memphis College of Music offers training of the highest standards in all phases of music activity. Accepting beginners of all ages, it carries their studies through intermediate and college work leading to the degrees of Bachelor of Music and Bachelor of Arts with a major in music, which degrees are conferred by SOUTHWESTERN. Its work is recognized and accredited by the State of Tennessee and by full membership in the National Association of Schools of Music.

THE FACULTY

- CHARLES EDWARD DIEHL, A.M., D.D., LL.D.**
(A.B., Johns Hopkins University; Graduate of Princeton Theological Seminary; A.M., Princeton University)
President of SOUTHWESTERN
- BURNET CORWIN TUTHILL, A.M., M.Mus., MUS. DOC.**
(A.B. and A.M., Columbia University; M. Mus., College of Music of Cincinnati)
Director
- PIANO**
- GLADYS CAUTHEN**
(Pupil of Theodor Bohlman, Mrs. E. T. Tobey, William H. Sherwood and Ernest Hutcheson, President, Memphis College of Music, 1933-1943)
Dean, Music Faculty
- IALEEN T. DUNNING, B.Mus.**
(B.Mus., American Conservatory, Pupil of Theodor Bohlman, Silvio Scionti and Mrs. Carre Louise Dunning—Dunning System)
- LOIS MAER**
(Graduate, Boling-Musser School of Music; pupil of Sigismund Stojowski and Rudolph Ganz; now director of piano teaching in Miss Hutchison's School)
- ELIZABETH MOSBY**
(Graduate, Chicago Musical College; Student of Columbia University and Washington University; Pupil of Xaver Scharwenka, Raphael Josefy, Theodor Bohlmann and August Fraemke; now director of piano teaching in St. Mary's School)
- MYRON MYERS, B.Ed., M.Mus.**
(B. Ed., Milwaukee State Teachers College; M. Mus., University of Michigan; pupil of Joseph Brinkman and Artur Schnabel)
- VIRGINIA MYERS, B.M., M.Mus.**
(B.Mus., Memphis College of Music; M.Mus., University of Michigan, pupil of Myron Myers, Joseph Brinkman and Artur Schnabel)
- GRACE M. PEEL, B.Mus.**
(B.Mus., Chicago Musical College; pupil of Percy Grainger and Moissaye Boguslawski)
- MAUDE WALKER**
(Student at Institute of Musical Art in New York and Teacher's College, Columbia University and Washington University; pupil of Henrietta Michelson; now director of piano teaching at Pentecost-Garrison School)
- MINNIE J. BERNSTEIN, B.M.**
(B.Mus., Memphis College of Music; pupil of Myron Myers)
- GERTRUDE M. DOWD, B.M.**
(B.Mus., Memphis College of Music; pupil of Lois Maer)
- MRS. HARRIS BOYD, B.M.**
- JANE SODERSTROM, B.M.**
(B.Mus., Memphis College of Music; pupil of Lois Maer)
- VOICE**
- CLARE ELBY**
(Pupil of Frida Ashforth, Leontine de Ahna, Inez Barbour Hadley and Edyth Walker; in piano of Raphael Josefy and Theodore Leschetizky)
- BESS PORTWOOD, B.Mus.**
(B.Mus., American Conservatory; pupil of Louise Robyn, Elaine de Sellem and Noble Cain)
- NEWMAN LEIGHTON**
- VIOLIN**
- NOEL GILBERT**
(Pupil of Joseph Henkel and Scipione Guidi; concert master, Memphis Symphony Orchestra)
- FLORENCE KNOX, B.S.**
(B.S., Institute of Music Art of the Juilliard School of Music; pupil of Edouard Dethier, Assistant concert-master, Memphis Symphony Orchestra)
- VIOLINCELLO**
- VINCENT DE FRANK**
- ORGAN**
- ADOLPH STEUTERMAN, F.A.G.O.**
(Pupil of Dr. T. Tertius Noble, Dr. William C. Carl and Charles Galloway; organist, Calvary Episcopal Church, Memphis)
- HARP**
- ANGELO CORTESE**
(Pupil of Tramonti in Chicago and of A. Hasselmanns at the Paris Conservatoire; many years as harp solosit on tour)
- FLUTE**
- ANNE T. REYNOLDS, A.B., B.Mus.**
(A.B., SOUTHWESTERN; B.M., Memphis College of Music; flute pupil of Ary Van Leeuwen, Edwin Lennig and Laurent Torno; solo flute Memphis Symphony Orchestra)
- CLARINET**
- BURNET CORWIN TUTHILL, A.M., M.Mus., Mus.Doc.**
(Formerly solo clarinet Young Men's Symphony, N. Y., Cincinnati Little Symphony)
- BASSOON**
- HENRY HAND**
(Solo bassoon, Memphis Symphony Orchestra)
- HORN**
- ALAN CASH, B.M.**
(Solo horn, Memphis Symphony Orchestra)
- TRUMPET**
- LESTER BRUCH**
(Trumpet, Memphis Symphony Orchestra)
- TROMBONE**
- HERBERT C. GINN**
(Solo trombone, Memphis Symphony Orchestra)
- PERCUSSION**
- ROGERS DALTON**
(Tympanist, Memphis Symphony Orchestra)
- ACCOMPANIST**
- WALTON COLE, A.B.**

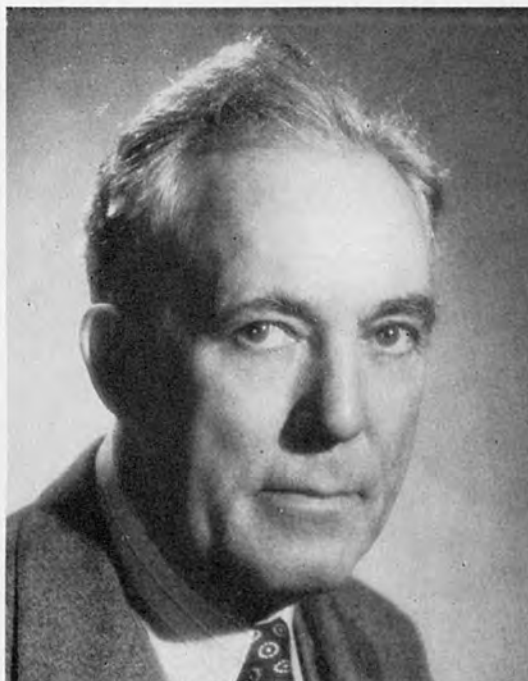


THE DEANS



A. THEODORE JOHNSON
Dean

A.B., Westminster College; A.M., University of Virginia; Ph.D., University of North Carolina
Professor of English



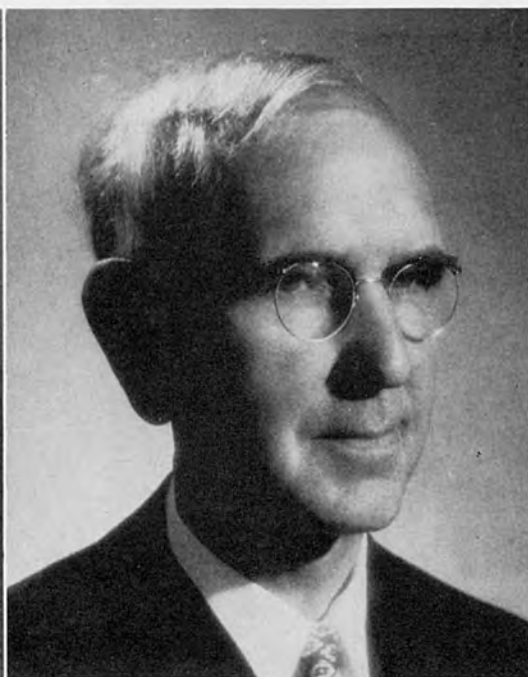
WALLER RAYMOND COOPER
Dean of Men
A.B., Washington and Lee University;
A.M., Harvard University; LL.B.,
University of Alabama; B.A., Oxford University
Professor of History



MARGARET HUXTABLE TOWNSEND
Dean of Women
B.A. and M.A., McGill University
Associate Professor of Sociology

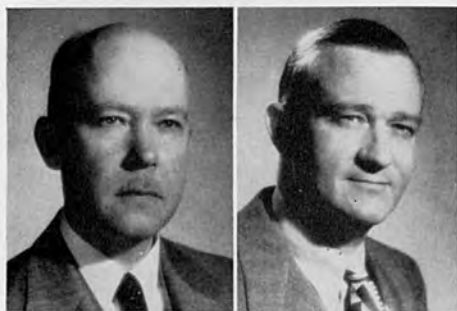


HELEN GORDON
Associate Dean of Women
A.B., Southwestern; A.M., Columbia University
Instructor in Psychology



ROBERT S. POND
Dean of Freshmen
A.B., Washburn College; A.M. Marietta College
PhD., University of Kansas
Associate Professor of Mathematics

FACULTY



DAVID M. AMACKER, M.A.
A.B., Princeton University; B.A. and M.A.,
Oxford University
Professor of Political Science

CLINTON L. BAKER, M.S., Ph.D.
B.S. and M.S., Emory University;
Ph.D., Columbia University
Professor of Biology



JOHN R. BENISH, A.M.
A.B., Arkansas College; A.M., Vanderbilt University
Assistant Professor of English

AL CLEMENS, A.B.
A.B., University of Alabama
Director of Physical Education and Athletics



JOHN H. DAVIS, M.A., Ph.D.
A.B., University of Kentucky; B.A. and M.A.,
Oxford University; Ph.D., University of Chicago
Professor of History
The J. J. McComb Chair

ELEANOR B. FARQUHARSON, A.B.
A.B., Southwestern
Assistant Director of Physical Education and
Intramural Sports for Women



ROBERT W. HARTLEY, Ph.D.
A.B., University of Utah; B.A., Oxford University;
Ph.D., University of Pennsylvania
Professor of Mathematics

ALEXANDER P. KELSO, B.D., M.A., D.D.
A.B., Washington and Jefferson College; B.D.,
Western Theological Seminary; B.Sc. and M.A.,
Oxford University
Professor of Philosophy and Christian Ethics;
The R.A. Webb Chair



JOHN H. KENT, M.A., Ph.D.
B.A. and M.A., Queen's University; Ph.D.,
University of Chicago;
Associate Professor of Latin

LAURENCE F. KINNEY, A.M., Ph.D.
A.B., Hampden-Sydney College;
B.D., Union Theological Seminary;
A.M. and Ph.D., University of Virginia;
Professor of Bible; The Albert Bruce Curry Chair

THE FACULTY

AMOS J. LESSARD, A.B., A.M.
A.B., Clark University; A.M., Princeton University;
Assistant Professor of Romance Languages

LOUIS G. LOCKE, A.M., Ph.D.
A.B., Bridgewater College; A.M., and Ph.D., Harvard University
Associate Professor of English

ROBERT LORENZ, Ph.D.
Diploma, University of Breslau, Ph.D., Columbia University
Associate Professor of Economics

MARION LEIGH MacQUEEN, A.M., Ph.D.
A.B., Southwestern; A.M., University of Wisconsin;
Ph.D., University of Chicago
Professor of Mathematics

VIRGINIA MORENO, A.M.
A.B., Stanford University; A.M., Middlebury College
Assistant Professor of Spanish

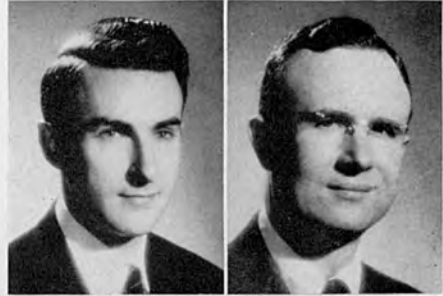
JOHN OSMAN, A.M.
A.B., Presbyterian College; B.D., Th.M., Union Theological Seminary;
A.M., University of Richmond;
Director of Adult Education and Assistant Professor of Philosophy

PEYTON NALLE RHODES, A.M., Ph.D.
A.B., A.M., and Ph.D., University of Virginia
Professor of Physics

MARTIN W. STORN, A.M., Ph.D.
A.B., Wartburg College; A.M., University of Washington;
Ph.D., University of Illinois;
Professor of Romance Languages

ROBERT P. STRICKLER, Ph.D.
A.B., West Virginia University; 1907-10, Oxford University;
Ph.D., Johns Hopkins University
Professor of Greek

GEORGE F. TOTTEN, A.M.
A.B., Wayne University; A.M., University of Michigan
Assistant Professor of Speech and Dramatics



FACULTY



CHARLES LOUIS TOWNSEND, A.M., Ph.D.
B.A., McGill University; A.M. and Ph.D.,
Harvard University;
Professor of Modern Languages

BURNET C. TUTHILL, A.M., M.Mus., Mus.D.
A.B. and A.M., Columbia University; M.Mus.,
College of Music of Cincinnati;
Professor of Music



RAYMOND T. VAUGHN, A.M.
A.B., Culver-Stockton College;
A.M., University of Missouri;
Associate Professor of Chemistry

FELIX M. WASSERMAN, Ph.D.
Student at Universities of Heidelberg and Munich;
Ph.D., University of Freiburg
Assistant Professor of Geography and Modern
Languages



JAMES L. A. WEBB, Ph.D.
B.S., Washington and Lee University; Ph.D.,
Johns Hopkins University;
Assistant Professor of Chemistry

OLIVE E. WESTBROOKE, A.M.
A.B., Goucher College; A.M., University of Chicago;
Assistant Professor of Psychology



ROY L. DAVIS, A.B., B.D.
Secretary of Public Relations

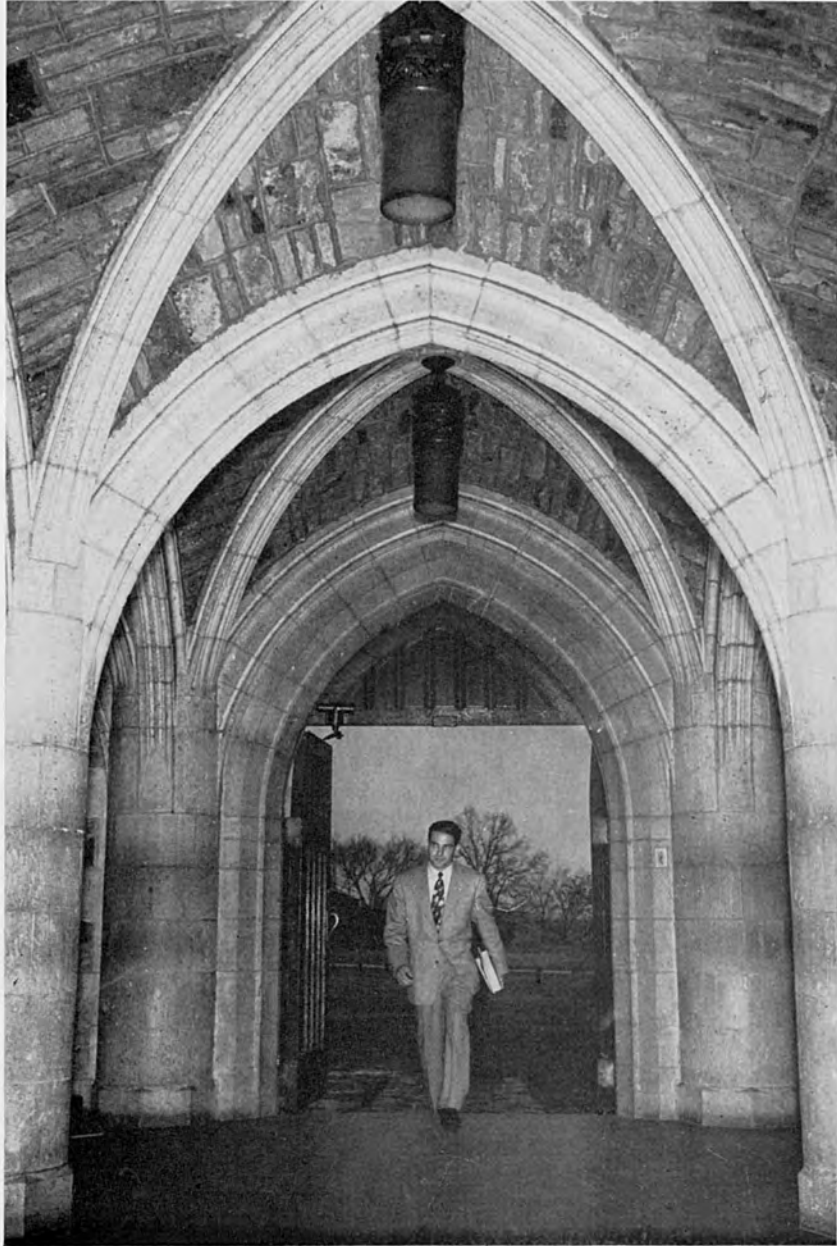
MALCOLM EVANS, B.A.
Registrar



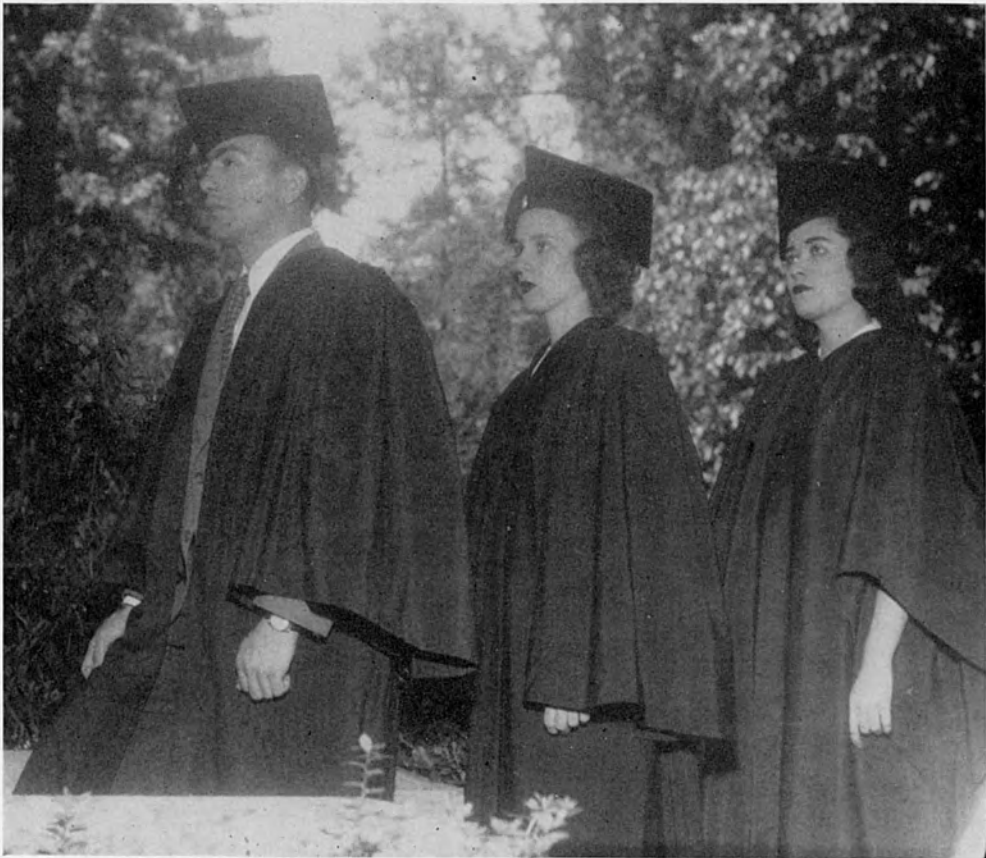
MARY MARSH, A.B. IN L.S.
Librarian

C. L. SPRINGFIELD, LL.B.
Bursar and Business Manager

The Classes



The Seniors



CLASS OFFICERS



President	BETTY LAY
Vice-President	VIRGINIA GIBBINS
Secretary-Treasurer	DOROTHY CHAUNCEY

SENIORS

Mary Lou Almeda
Memphis

Delta Delta Delta, War Service Chairman 3, 4; Historian, 4; Y.W.C.A. 1, 3; Choir 1, 3, 4; Franco-German Club 1; Southwestern U.S.O. Chapter 3; Lynx Staff 4.



Paul Barret
Kerrville, Tennessee
Sigma Alpha Epsilon.

Sarah White Barth
Memphis

Delta Delta Delta; Choir 1, 3, 4; Publications Board 2; Stylus 1, 2, 3, 4; Y.W.C.A. 1, 2, 3, 4; Canterbury Club 4.



Betty Belk
Williamsburg, Virginia
Kappa Delta, Editor 4; Christian Union Cabinet 1, 2, 3, President 4; Women's Dormitory Governing Board, Vice-President 3, President 4; Honor Council 3, Vice-President 4; Y.W.C.A. Cabinet 2, 3, 4, Treasurer 3; Women's Undergraduate Board 3, 4; Student Council 4; Student Counsellor 4; Student-Faculty Committee on Religious Life 3, 4; Torch, Secretary 4; Who's Who in American Colleges and Universities, 4; Candidate for Distinction in English.

Jane Bigger
Memphis

Alpha Omicron Pi, Pledge Treasurer 1, Outstanding Pledge Award 1, House Chairman 2, Vice President 3; President 4; S.T.A.B. 1, 2, 3, Vice-President 4; Student Council 2, 3, 4; President Sophomore Class; President Junior Class; Elections Commission 3, 4; Torch Sophomore Award 2; Torch 4; Women's Panhellenic 4; Y.W.C.A. 1, Cabinet 2, Vice-President 3, President 4; Student Counsellor 3; Christian Union Cabinet 3, 4; Women's Undergraduate Board 2, 3, 4; Lynx Staff 1, 2; Sou'wester Staff 1; Member of Student-Faculty Committee on Religious Life 4; Canterbury Club 1, 2; AOPi Basketball Team 1, 2, 3, 4; April Fool Carnival Court 4; S.A.B.A. 4; Who's Who in American Colleges and Universities 4; Candidate for Distinction in Biology.



Mabel Boone
Memphis
Independent Women 1, 2, 3, 4; President 3; Y.W.C.A. 1, 2, 3, 4; Sou'wester Staff 1, 2, 3; Spanish Club 1, Treasurer 2; Biology Laboratory Assistant 2, 3, 4; 1st Honor Student in Sophomore Class; Women's Undergraduate Board 3; Secretary Elections Commission 4; Secretary Publications Board 4; Alpha Theta Phi 4; Chi Beta Phi 4.

Ann Bradshaw
Memphis

Transfer from Mary Baldwin College; Alpha Omicron Pi 2, 3, 4; Y.W.C.A. 2, 3, 4; Canterbury Club 2, 3, 4.



Warren Buford
Tallulah, Louisiana
Transfer from Belhaven College 2; Delta Delta Delta; Canterbury Club 3, 4; Y.W.C.A. 2, 3.

SENIORS

Dorothy Chauncey

Memphis

Delta Delta Delta Pledge Scholarship Award 1, Historian 2, Assistant Treasurer 3, Treasurer 4; Student Council 4; Y.W.C.A. 1, 2, Cabinet 3, Secretary 4; Sou'wester 1, 2, 3; Canterbury Club 2, 3; Honor Council 3, 4; Nitist Club 3, President 4; Torch 4; Alpha Theta Phi 4, Women's Undergraduate Board President 4; Secretary-Treasurer Senior Class; Psychology Assistant 3, 4; Third Place in Scholarship 2; Student Counselor 4; Who's Who In American Colleges and Universities 4.



May Alice Christie
Memphis

Julia Anne Crutchfield

Memphis

Delta Delta Delta, Vice-President of Pledges 1, Best Pledge 1, Pledge Scholarship Award 1, House Chairman 2, Rush Chairman 3, Secretary 4; Pi 1, 2, President 3, 4; Spenser Greek Award 1, 2; President Alpha Theta Phi 4; Torch 4; President W.A.A. 4; Nitist Club Secretary 3, Vice-President 4; Elections Commission 3, Vice-President 4; Women's Undergraduate Board 4; Student Council 4; Student Welfare Committee 4; Vice-President Junior Class; Treasurer War Bond Drive 3; 3rd Honor Student 1; 1st Honor Student 2; Co-author and Director April Fool Carnival Play 4; Sou'wester Staff 1, 2, 4; Lynx Staff 2, Assistant Editor 3; Y.W.C.A. 1, 2, 3, 4; Spanish Club 2; S.A.B.A. 4; Who's Who in American Colleges and Universities 4; Candidate for Honors in History.



Charles L. Cox, Jr.

Memphis

Kappa Sigma; Honor Scholarship 1; Kappa Sigma Scholarship Award 1, Vice-President 2, President 3; Men's Panhellenic Council 2; Band 1; Honor Council 2; Chi Beta Phi 2, Secretary 3; Omicron Delta Kappa, Vice-President 3.

Rezneat Darnell

Memphis

Kappa Alpha; Southwestern Band 1; Southwestern Singers 1, 2, 4; Memphis Symphony Orchestra 1, 2, 3, 4; Sou'wester Business Staff 1; President Independent Men 3; Biology Laboratory Assistant 3, 4; Chi Beta Phi 4; Candidate for Distinction in Biology.



Dee Edmondson
Memphis

Ilse Einstein

New York, New York

Independent Women 1, 2, 3, 4, Vice-President 3; Y. W. C. A. 1, 3, 4; Franco-German Club 1; Heelers 1, 2; Players 3, 4, Secretary 3; Lynx Staff 3; Sou'wester Staff 3, 4; Nitist Club 1, 3, 4; Vice-President and President 3; Canterbury Club 3, 4; Alpha Theta Phi 4; 2nd Honor Student in Sophomore Class; 2nd Honor Student in Junior Class; Candidate for Distinction in Psychology.



Garnet Field

Memphis

Transfer from Florida Southern College; Delta Delta Delta, House Chairman 3, Marshall 4; Canterbury Club 2, 3, 4; Y.W.C.A. 2, 3, 4; Nitist Club 3, 4; Sou'wester Staff 2, 3, 4; Lynx Staff, Activities Editor 4; Summer Honor Council 1, 3.

SENIORS

Lucy Gerald
Leland, Mississippi
Transfer from Milsaps College;
Kappa Delta.



Virginia Gibbins
Shreveport, Louisiana
Zeta Tau Alpha, Pledge President 1, Best Pledge 1, Activities Chairman 2, Treasurer 3, President 4; Southwestern Singers 1, Secretary 2, 3, President 4; Y.W.C.A. 1, Cabinet 2, 3, Vice-President 4; Honor Council, Secretary 3, 4; Alpha Theta Phi Secretary-Treasurer 4; Vice-President Senior Class; Vice-President Torch 4; Vice-President Women's Panhellenic 4; Women's Undergraduate Board 4; Elections Commission 4; Student Counsellor 4; Christian Union Cabinet 4; S.T.A.B. 4; Who's Who in American Colleges and Universities.

Marie Gooch
Memphis
Transfer Millsaps College 2; Chi Omega, House Chairman 3, Activities 4; Y.W.C.A. 1, 2, 3, 4; Spanish Club 3; Sou'wester Business Staff 2; Business Manager 3; Lynx Staff 3, Assistant Business Manager 4; W.A.A. 4.



June Guice
McComb, Mississippi
Zeta Tau Alpha, Pledge Treasurer 1, Scholarship Chairman 3, Historian 4; Y.W.C.A. 1, 2, 3, 4; Canterbury Club 1, 4; Spanish Club 1, 2, 4; Sou'wester Staff 4.

Martha Jo Gulo
Memphis
Delta Delta Delta, House Chairman 2, 3, Chaplain 3, 4; Sou'wester Staff 1; Y.W.C.A. 1, 2, 3, 4.



Mary Jane Hargraves
Memphis
Kappa Delta.

Marion Hollenberg
Memphis
Chi Omega; Canterbury Club 1, 4; Franco-German Club 1; Y. W. C.A. 1, 4.



Jeanette Hord
Memphis
Delta Delta Delta, War Work Chairman 3, House Manager 4; Pi 2, 3, 4; Y.W.C.A. 1, 2, 3, 4; Canterbury Club 1, 2, 3, 4; Spanish Club 4.

SENIORS

Nancy Ann Hughes

Blytheville, Arkansas

Transfer Goucher College 3; Delta Delta Delta; Y.W.C.A. 3, 4; Canterbury Club.



Vadis Jeter

Memphis

Alpha Omicron Pi, War Work Chairman 2, Secretary 4; Southwestern Singers 1, 2, 3, 4; Heelers 1, 2; Players 3, 4; Y.W.C.A. 1, 2, 3, 4; April Fool Carnival Play 1; U.S.O. Secretary of S.O.S. 2; Costuming of Gay Nineties Review 3; Canterbury Club 4; Costuming of April Fool Carnival 4.

Everarde Jones

Tchula, Mississippi

Kappa Sigma, Pledge Master 2, Vice-President 3, President 3, Vice-President Student Body 3; President Publications Board 3; Men's Panhellenic, Vice-President 3, President 4; Elections Commission 3; Southwestern Players 3, 4; Student Welfare Committee 4; Student Council 3, 4; President Men's Dormitory 4; April Fool Carnival Court 4.



Sally Johnston

Memphis

Zeta Tau Alpha, Rush Captain 2, Corresponding Secretary 3, Vice-President 3, 4; Sou'wester Staff 1, 2, 3, 4; Women's Pan-Hellenic 3, 4; Y.W.C.A. 1, 2, 3, 4; Canterbury Club 1, 2; Franco-German Club 1; Election Commission Alternate 2; Heelers 1, 2; Southwestern Players 3, 4; W.A.A. 2; Lynx Staff 1, 2, 3.

Constantine Kakouris

Mexico City, Mexico

Independent Men 3, 4; Scholarship Award 3; Spanish Club 3, Treasurer 4; 1st Prize in Third Year Greek 3; Sou'wester Staff 4; Candidate for Distinction in Spanish.



Fred F. Kelley Jr.

Steele, Missouri

Kappa Sigma, President 1st semester 4; Secretary-Treasurer Men's Panhellenic 4; Elections Commission 4; Honor Council 1; April Fool Carnival Court 1.

Nancy Nell Kizer

Milan, Tennessee

Chi Omega pledge president 1, Pledge Scholarship Award 1, Herald 2, Secretary 3, President 4; Honor Council 1, 2, 3, 4, Vice-President 3; Y.W.C.A. 1, 2, 3, 4; Chi Omega Basketball Team 1, 2, 3, 4; Spanish Club 2; Women's Governing Board 2, 3, Vice-President 4; S.T.A.B. 3, 4; Women's Panhellenic 3, Treasurer 4; Torch President 4; Vice-President Women's Undergraduate Society 4; Student Welfare Committee 4; Student Council 4; Who's Who In American Colleges and Universities 4.



Dorothy Jane Knight

Memphis

Transfer Randolph-Macon; Chi Omega.

SENIORS

Polly Laguzzi
Memphis

Zeta Tau Alpha, Rush Captain 2, Corresponding Secretary 3, Vice President 3, 4; Sou'wester Staff 1, 2, 3, 4; Women's Panhellenic 3, 4; Y.W.C.A. 1, 2, 3, 4; Canterbury Club 1, 2; Franco-German Club 1. Election Commission Alternate 2; Heelers 1, 2; Southwestern Players 3, 4; W.A.A. 2; Lynx Staff 1, 2, 3.



Jean Lawo
Memphis

Transfer Ohio State 2; Delta Delta Delta, Pledge President 2, Social Chairman 3, Rush Captain 4; Choir 2, 3, 4; Spanish Club 2, 3, 4; Y.W.C.A. 1, 2, 3, 4; Canterbury Club 3, 4.

Betty Lay
Homer, Louisiana

Delta Delta Delta, Activities Chairman 3, Corresponding Secretary 4; Sou'wester Staff 1, 2, 4; Tri Delta Basketball 3, 4; Lynx Staff 1, 2, 4; Y.W.C.A. 1, 2, 3, 4; Canterbury Club 1, 2; President Senior Class; Women's Undergraduate Board 4; W.A.A. 3; Dormitory Governing Board 4; Student Council 4.



Patsy Mathewes
Memphis

Chi Omega, Pledge Mistress 3; S.T.A.B. 1, 2, 3, 4, Vice-President 3, Secretary-Treasurer 4; Canterbury Club 1, 2, 3, 4, Vice-President 4; Sou'wester Staff 1, 3; Lynx Staff 3, 4; Y.W.C.A. 1, 3, 4.

Kitty Grey Pharr
Memphis

Transfer University of Alabama; Chi Omega Rush Chairman 3, Treasurer 3; Vice-President 4; Student Council 4; President Publications Board 4; Alpha Theta Phi 4; Torch 4; Christian Union Cabinet 4; Sou'wester Staff 2, Managing Editor 3; Lynx Staff 2, Business Manager 3; Vice-President Women's Undergraduate Board 3; Canterbury Club 2, 3; Y.W.C.A. 2, 3; Chi Omega Basketball 2, 3.



Nancy Siler
Humboldt, Tennessee

Transfer Vanderbilt University 2; Alpha Omicron Pi Corresponding Secretary 3, 4; Canterbury Club 3, 4; Sou'wester Business Staff 2; Y.W.C.A. 2, 3; Candidate for Distinction in Mathematics.

Pearl Strickler
Memphis

Alpha Theta Phi 4; Spencer Greek Award 2; Alpha Theta Phi Scholarship Award 2.



Billye Sutton
Memphis

Choir 3, 4; Alpha Theta Phi 4.

SENIORS

Roberta Treanor

Memphis

Kappa Delta, Pledge President 1, Rush Captain, Corresponding Secretary 2, Secretary 3, President 4; Y.W.C.A. 1, 2, 3, 4; Canterbury Club 1, 2, 3; Sou'wester Staff 1, 2; Lynx Staff 1, 2; Heelers 1, 2; Players 2, President 4; S.T.A.B. 2, 3, 4; President 4; Women's Panhellenic 2, 3, 4; Nitist Club 3, 4; Kappa Delta Basketball Team 1, 2, 3, 4; Women's Undergraduate Board 4; Student Council 4.

Virginia Wade

Memphis

Delta Delta Delta, Pledge Treasurer 1, Rush Chairman 2, Panhellenic Representative 3, President 4; Secretary-Treasurer Student Body 4; Student Council 4; Women's Panhellenic 3, Secretary 4; Torch 4; Women's Undergraduate Board 4; Sou'wester Staff, Music Editor 1, 2, 3, Assistant Editor 3; Lynx Staff 1, 2, Make-up Editor 3, Editor 4 (resigned); Canterbury Club 1, 2, President 3, Program Chairman 4; Choir 1, 2; Editor Women's Panhellenic Booklet 3; Editor Women's Undergraduate Handbook 4; Y.W.C.A. 1, 2, 3; Spanish Club 3; Tri Delta Basketball Team 1, 2; Nitist Club 2; Who's Who in American Colleges and Universities 4; Candidate for Distinction in English.

Betty Bynum Webb

Fort Worth, Texas

Kappa Delta, Cultural Programs Chairman 3, Editor, Secretary 4; Y.W.C.A. 1, 2, 3, 4, Cabinet 2; Southwestern Singers 1, 2, 3, Secretary 4; Franco-German Club 1; Heelers 3, 4; Sou'wester Staff 3, Music Editor 4; Alpha Theta Phi 4; Christian Union Cabinet 4.

Berniece Wiggins

Memphis

Kappa Delta Editor 2, 3, Vice-President 4; Players 1, 2, Vice-President 3, President 4; Elections Commission Vice-President 3, President 4; Stylus 1, 2, 3, 4; President 3; Nitist Club 1, 2, 3, 4; Secretary Publications Board 3; Student Council 3, 4; Sou'wester Co-Ed Associate Editor 2, Editor 4; Spanish Club 2; Y.W.C.A. 1, 2, 3, 4; Editor Journal 3; S.A.B.A. 4; Torch 4; Alpha Theta Phi Vice-President 4; Lynx Staff 2; Stylus Literary Cup 1; Kappa Delta Basketball Team 1, 2, 3; Public Forum Committee 1, 2; Pi 3, 4; April Fool Play, Co-Arthur and Director 1, 4; Who's Who in American Colleges and Universities 4; Candidate for Honors in Political Science.



Jim Wade

Memphis

Kappa Alpha Treasurer 2, Vice-President 2, President 4; Stylus 2, President 4; Sou'wester Staff 1, Sports Editor 2, 4; Elections Commission 4; Men's Panhellenic 2, 4; Intramural Athletic Board 2, President 4; Varsity Basketball 2, Co-Captain 4; S.A.B.A. 4; Captain Kappa Alpha Basketball Team 4; Runnerup in Golf Tourney 2; "S" Club 2, 4.



Gloria Walker

Florence, Alabama

Transfer Vanderbilt University 2; Alpha Omicron Pi, Pledge Scholarship Award 2, Scholarship Chairman 3, Herald 4; Canterbury Club 3, 4; Y.W.C.A. 2, 3; Spanish Club 2; Sou'wester Business Staff 2; Chi Beta Phi, 4; Candidate for Distinction in Mathematics.



Susie B. Weston

Memphis



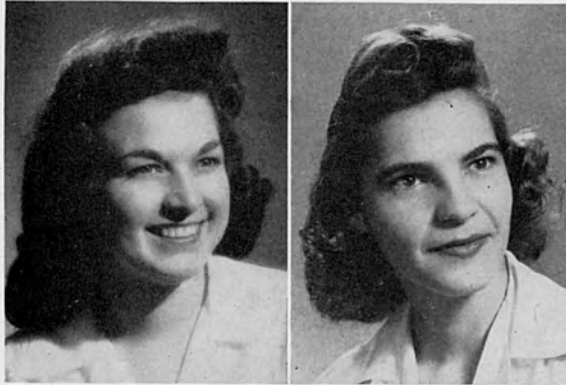
Louise Wilbourn

Memphis

Transfer Sweetbriar 3; Chi Omega 3, 4; Sou'wester Staff 3; Y.W.C.A. 3, 4; Canterbury Club 3, 4, Secretary 4.

SENIORS

Helen Williams
Memphis
Independent Women; Y.W.C.A.
1, 2, 3, 4; Spanish Club 2.



Jennie Williams
Macon, Georgia



Emily Williamson
Memphis
Transfer from Saint Mary's Junior
College; Chi Omega Pledge Sec-
retary; Canterbury Club 3, 4;
Y.W.C.A. 3, 4; Sou'wester Staff 3.

THE JUNIOR CLASS



OFFICERS

President	MARY LANGMEAD
Secretary-Treasurer	MARY GIDEON

JUNIORS



BETTY BOUTON
Delta Delta Delta Memphis

BETTY McREE BOUTON
Alpha Omicron Pi Memphis



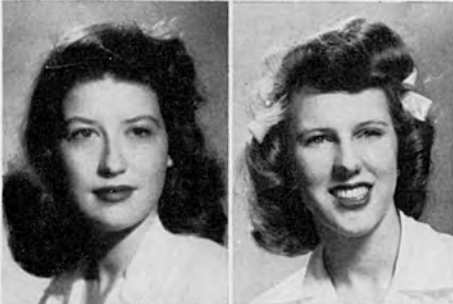
ANN BURKETT Bassett, Arkansas
Kappa Delta

HARRIET CAUSEY Cleveland, Mississippi
Delta Delta Delta



NANCY CONN Memphis
Alpha Omicron Pi

JEANNE de GRAFFENREID Memphis



EVELYN DOWLING White Plains, New York
Kappa Delta

SARA ANN ELLIOTT Jackson, Mississippi
Delta Delta Delta



NORMA ESTES Martin, Tennessee
Delta Delta Delta

FRANCES FISH Memphis
Zeta Tau Alpha

JUNIORS

ERNEST FLANIKEN Memphis
 LEONE FLANIKEN Memphis
 Alpha Omicron Pi



MAYNARD FOUNTAIN Greenwood, Mississippi
 Sigma Alpha Epsilon
 LOUISE FRANK Memphis
 Delta Delta Delta



CLEIGHTON GANNON Memphis
 MARY GIDEON Memphis
 Delta Delta Delta



EVELYN GIVENS Memphis
 JACQUELINE GOODMAN Memphis



BETTYE LEE HANCOCK Memphis
 Alpha Omicron Pi
 CATHERINE HARRISON Hopewell, Virginia
 Zeta Tau Alpha



JUNIORS



CAROLYN HESSELBEIN Memphis
 Zeta Tau Alpha

DOT HOGAN Memphis
 Zeta Tau Alpha



CLARICE IRBY Memphis

CLAIRE JAMES Memphis
 Alpha Omicron Pi



STELLA JONES Jackson, Mississippi
 Delta Delta Delta

MARY ANN KILLORIN Memphis
 Chi Omega



MARY ANN KLINKE Memphis
 Chi Omega

JEAN LANGHART Memphis
 Delta Delta Delta



MARY LANGMEAD Washington, D. C.
 Kappa Delta

PEGGY LAUGHTER Memphis
 Zeta Tau Alpha

JUNIORS

LAVERNE LAZAROV Memphis

ALICE LEE Little Rock, Arkansas
Delta Delta Delta

KATHRYN LYNCH Collierville, Tennessee
Delta Delta Delta

KYLE MacLEOD Lake Charles, Louisiana
Sigma Alpha Epsilon

SARA GREY McCALLUM Ripley, Tennessee
Zeta Tau Alpha

ANN McCONNELL Hulbert, Arkansas
Kappa Delta

MARY FRANCES McDEARMAN Memphis
Kappa Delta

PAUL McLENDON Montgomery, Alabama
Sigma Alpha Epsilon

NANCY McMAHAN Memphis
Chi Omega

CATHERINE MARTIN Memphis
Zeta Tau Alpha



JUNIORS



MARGRAVE PAUL MELHORN Parkin, Arkansas
Alpha Omicron Pi

VIRGINIA MORGAN Memphis



CAROL MORRIS Paris, Tennessee
Delta Delta Delta

MARY VIRGINIA MORRIS San German, Puerto Rico



RUBY ORGAIN Little Rock, Arkansas
Kappa Delta

PEGGY PARSONS Memphis
Kappa Delta



FRANCES PERKINS Memphis
Chi Omega

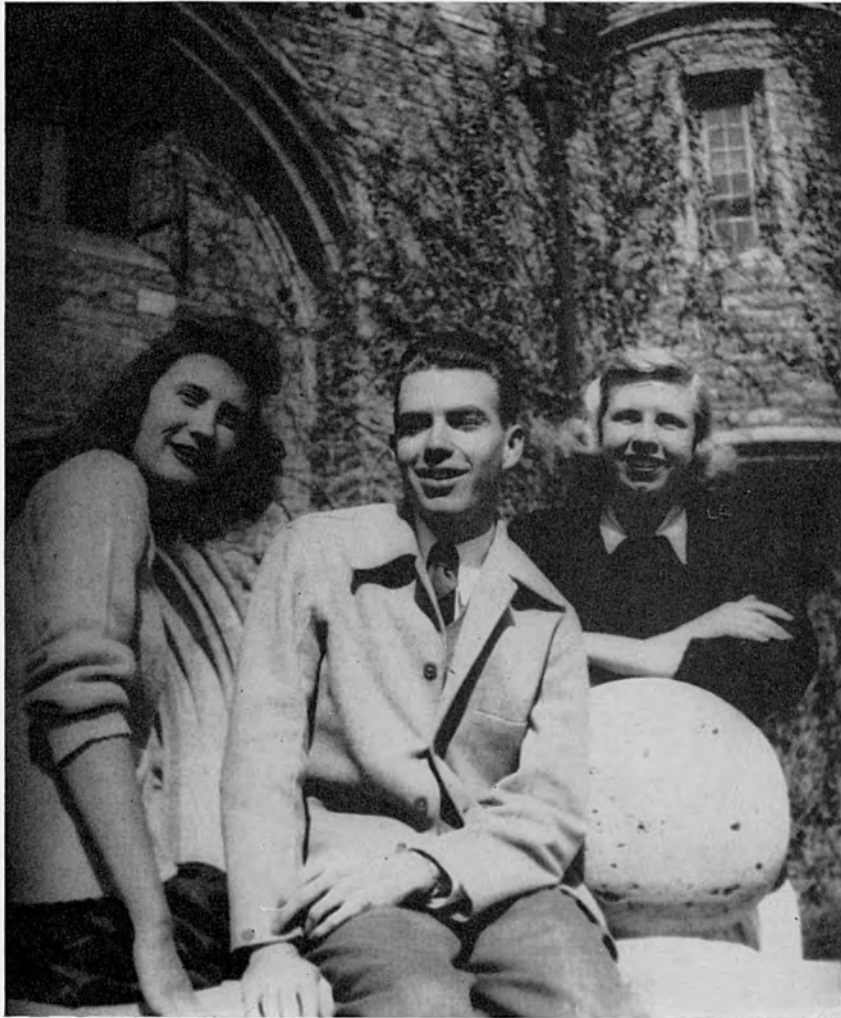
MARTHA PITTMAN Chatfield, Arkansas
Kappa Delta



VIRGINIA PRETTYMAN Covington, Tennessee

ANN PRIDGEN Memphis
Alpha Omicron Pi

THE SOPHOMORE CLASS



OFFICERS

President	JIMMY BLANKENSHIP
Vice-President	BEVERLY BEANE
Secretary-Treasurer	WESTY TATE

SOPHOMORES



HARRIET ALLEN
Memphis
Chi Omega

REGINE BACOT
Meridian, Mississippi
Zeta Tau Alpha

PEGGY BAKER
Leland, Mississippi
Chi Omega



BEVERLY BEANE
Memphis
Chi Omega

LILY ANNE BEGGS
Memphis
Alpha Omicron Pi

SUE BLACKWELL
Memphis
Zeta Tau Alpha



JIMMY BLANKENSHIP
Monette, Arkansas
Kappa Sigma

BARBARA BOWDEN
Memphis
Alpha Omicron Pi

BETTY JO BRANTLEY
Memphis



AMELIA BRENT
Heth, Arkansas
Delta Delta Delta

DOROTHY BROWN
Memphis

HAZEL BROWN
Leland, Mississippi
Delta Delta Delta



POLLY BROWN
Kosciusko, Mississippi
Alpha Omicron Pi

BARBARA BURNETT
New Orleans, Louisiana
Zeta Tau Alpha

JUNE CAMP
Memphis

SOPHOMORES

MARTHA CARROLL
Memphis
Chi Omega

VIRGINIA CARTWRIGHT
Collierville, Tennessee
Delta Delta Delta

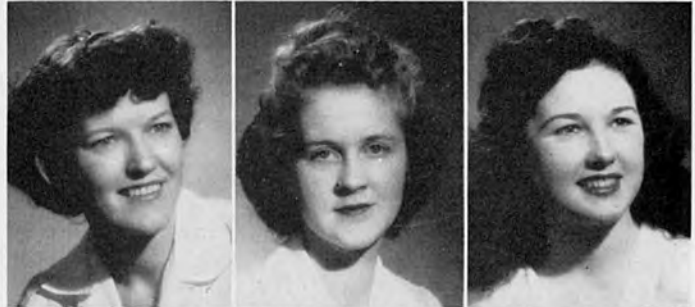
JULIA CHESTER
Dallas, Texas
Zeta Tau Alpha



SARAJANE COCKRILL
Crawfordsville, Arkansas
Zeta Tau Alpha

JOAN COGSWELL
Memphis

DOROTHY CRAWFORD
Memphis



CAROLYN CUNINGHAM
Arlington, Tennessee
Chi Omega

MARY BELLE CURRIER
Paris, Tennessee
Chi Omega

LEONA DeMERE
Memphis
Kappa Delta



SUE DUGGER
Sheffield, Alabama

BILL EGBERT
Memphis
Kappa Alpha

BETTY FAUX
Zeta Tau Alpha



TAYLOR FRANKS
Greenville, Mississippi
Chi Omega

PEGGY GALLIMORE
Greenfield, Tennessee
Zeta Tau Alpha

MINNIE LEE GILLESPIE
Greenwood, Mississippi
Chi Omega



SOPHOMORES



LUCILLE HAMER
Brownsville, Tennessee
Chi Omega

MARY MAURY HARDING
Memphis
Chi Omega

MARGARET HARDWICK
Covington, Tennessee
Zeta Tau Alpha



MARGARET HARTHCOCK
Clarksdale, Mississippi
Kappa Delta

HARRIS HAWKEN
Memphis
Kappa Sigma

KATE HILL
Memphis
Chi Omega



WILMARY HITCH
Drew, Mississippi
Chi Omega

KATHERINE HOAG
Memphis
Alpha Omicron Pi

GERALDINE HOUSE
Memphis



MARILU HOWTON
Turrell, Arkansas
Zeta Tau Alpha

JO ALLEN JACKSON
Memphis
Alpha Omicron Pi

DOROTHY JAMISON
Tiptonville, Tennessee



DAVID JOHNSON
Gallatin, Tennessee
Kappa Alpha

MARY EMMA KELLEY
Memphis

JANE KILVINGTON
Memphis
Delta Delta Delta

SOPHOMORES

BETTY LONG
Memphis
Alpha Omicron Pi

WILLIAM LONG
Memphis
Sigma Alpha Epsilon

ANNE LOVE
Leland, Mississippi
Delta Delta Delta



WILLIAM McAFEE
Memphis
Kappa Sigma

JOANNA McCLELLAN
Lepanto, Arkansas
Delta Delta Delta

FRANK McKNIGHT
Mason, Tennessee
Kappa Sigma



ESTELLE McLEAN
Milan, Tennessee
Delta Delta Delta

MARY JANE MAJOR
Memphis
Zeta Tau Alpha

LUCILE MAURY
Memphis
Chi Omega



MARY LOUISE NICHOLS
Memphis
Kappa Delta

JANE OGDEN
Memphis
Chi Omega

JEAN O'HEARNE
Memphis
Delta Delta Delta



JOE ALICE PAGE
Memphis
Alpha Omicron Pi

JANIE V. PAINE
Memphis
Chi Omega

PATRICIA PARK
Merigold, Mississippi
Zeta Tau Alpha



SOPHOMORES



VIRGINIA PEOPLES
Dyersburg, Tennessee
Delta Delta Delta

CAROLYN REYNOLDS
Memphis
Kappa Delta

ELISE RITNOUR
Memphis
Delta Delta Delta



NANCY LEE ROBINSON
Memphis
Zeta Tau Alpha

ANNA LOUISE ROTHER
Memphis
Zeta Tau Alpha

BETTY SHEA
Memphis
Alpha Omicron Pi



NORMA SHELTON
Memphis
Delta Delta Delta

BETTYE JUNE SIMMONS
Gallatin, Tennessee
Delta Delta Delta

VOULA SKOUTERIS
Memphis
Zeta Tau Alpha



BETTY SMITH
Dyersburg, Tennessee
Alpha Omicron Pi

MARY ANNE SMITH
Wynne, Arkansas

ELSIE SPELLINGS
Bells, Tennessee
Kappa Delta



KATHERINE STEVENSON
Memphis
Zeta Tau Alpha

RUTH STOKES
Dermott, Arkansas
Zeta Tau Alpha

BETTY STOUT
Memphis

SOPHOMORES

EUGENIA SUMRALL
Memphis
Zeta Tau Alpha

WESTY TATE
Laurel, Mississippi
Zeta Tau Alpha

VIRGINIA THOMASON
Memphis
Chi Omega



CHRISTINE TRAIKOFF
Marianna, Arkansas
Chi Omega

MACLYN TURNAGE
Gulfport, Mississippi
Kappa Sigma

RACHAEL UTLEY
Dyer, Tennessee
Zeta Tau Alpha



MARY ELLEN VACCARO
Zeta Tau Alpha

GLORIA VAUGHN
Sheffield, Alabama
Chi Omega

MADOLON WALKER
Memphis
Chi Omega



BOB WHERRITT
New Orleans, Louisiana

MARY NELL WILKINSON
Memphis
Kappa Delta

VIRGINIA ANNE WITHERS
Memphis
Chi Omega



HELEN WONG
Rosedale, Mississippi

KATIE WONG
West Memphis, Arkansas

NANCY POPE WRIGHT
Monticello, Arkansas
Zeta Tau Alpha



THE FRESHMAN CLASS



OFFICERS

President	BILLY HIGHTOWER
Vice-President	SAM FUDGE
Secretary-Treasurer	JANE PHELPS

FRESHMEN

JEAN ALBRIGHT New Orleans, Louisiana
 ROSE ALEXANDER Memphis
 ALICE ALLEIN Vicksburg, Mississippi
 Chi Omega



MARILYN ALSTON Memphis
 Alpha Omicron Pi
 JEANNE AMIS New Orleans, Louisiana
 Chi Omega
 PATRICIA ANN ARTAUD Memphis
 Delta Delta Delta



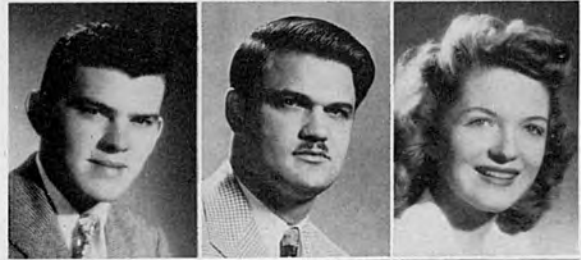
GLORIA ASH Little Rock, Arkansas
 Kappa Delta
 ANN AVERY Memphis
 Alpha Omicron Pi
 CAMILLE BAILEY Memphis



ELLA BAILEY Clarksville, Tennessee
 Delta Delta Delta
 KIRBY BAKER Memphis
 Sigma Nu
 MARY LYNN BEAN Blytheville, Arkansas
 Kappa Delta



BILL BELL Memphis
 Sigma Alpha Epsilon
 JOHN BILLINGS Memphis
 Kappa Alpha
 MARTHA BIRDSONG Jackson, Mississippi
 Kappa Delta



DENBY BRANDON Memphis
 Sigma Alpha Epsilon
 DICK BRAY Memphis
 Kappa Alpha
 PATRICIA CALDWELL Louisville, Kentucky
 Delta Delta Delta



FRESHMEN



MARJORIE CARNEY
Gamma Delta Memphis
GERALD CARPENTER
Sigma Nu Memphis
MARY ALMA CHURCH Memphis



CARY NEAL CLARK Whitehaven, Tennessee
Gamma Delta
MURIEL CLARY Paris, Tennessee
Kappa Delta
BILL CLARY Memphis
Kappa Sigma



ROBERT COBB Rome, Georgia
Kappa Sigma
SANDRA COHEN Memphis
COZETTE COLE Memphis



VINTON COLE Memphis
Chi Omega
JOHN COLLINS Memphis
Kappa Alpha
MAURICE CONNELL Wartrace, Tennessee
Sigma Alpha Epsilon



SHIRLEY ANN CONROY Memphis
WILLIAM COX Memphis
Sigma Alpha Epsilon
MARGARET CROSSAN New Orleans, Louisiana
Zeta Tau Alpha



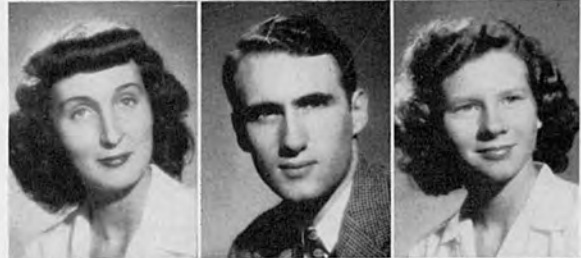
BETTY JEAN CULLINGS Memphis
Gamma Delta
ROSE MARIE DANKE Memphis
NANCY DAVIS Dyersburg, Tennessee
Kappa Delta

FRESHMEN

CHARLES DEAN Holly Springs, Mississippi
Sigma Nu
FRANCES DIXON Memphis
ELIZABETH DUDNEY Kingsport, Tennessee
Kappa Delta



MIGNON DUNN Memphis
Delta Delta Delta
SIDNEY EBERLE Memphis
Sigma Nu
JEAN ELLINGSON New Orleans, Louisiana
Zeta Tau Alpha



ELIZABETH ANN FAIRLEIGH Memphis
Gamma Delta
BETTY FALLS Memphis
Chi Omega
JACQUELINE FISH Paris, Tennessee



JERRY FLIPPIN Milan, Tennessee
Kappa Sigma
SAM FUDGE Memphis
ORA LEE GARRAWAY Memphis
Gamma Delta



TOM GLENN Talledega, Alabama
Pi Kappa Alpha
TOM GOSWICK Memphis
Kappa Sigma
MARY NELL GRAINGER Shreveport, Louisiana
Delta Delta Delta



MARGARET GREEN Grenada, Mississippi
Kappa Delta
BETTE ANN GROSSMAN Memphis
DALE GUENTHER Memphis
Gamma Delta



FRESHMEN



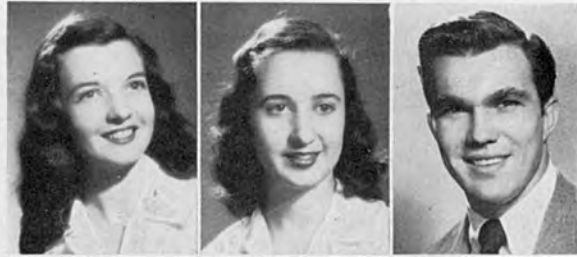
PEGGY HAILE	Alpha Omicron Pi	Memphis
JO ANN HANCOCK	Alpha Omicron Pi	Memphis
FRENCH HARRIS	Pi Kappa Alpha	Memphis
IRMAZELL HARRIS		Memphis, Tenn.
BILL HATCHETT	Kappa Sigma	Ellendale, Tennessee
TED HAY	Kappa Sigma	Memphis
HAZEL HENDERSON		Memphis
HARVEY HENDLEY		Memphis
SUE HENRY	Delta Delta Delta	Tchula, Mississippi
BILLY HIGHTOWER	Sigma Nu	Louisburg, Tennessee
KATE HILL	Chi Omega	Memphis
MARTIN HOLLINGER	Sigma Alpha Epsilon	Memphis
SALLY HOWARD		Mobile, Alabama
BILL INGRAM	Kappa Sigma	Memphis
SIDNEY KAHN		Memphis
BETTYE KILGORE	Gamma Delta	Memphis
CATHERINE KIMBEL		Louisville, Kentucky
GUY KING	Kappa Sigma	Memphis

FRESHMEN

JANE KING
Kappa Delta
Memphis

JEAN KING
Kappa Delta
Memphis

KENNETH KRESSEMBERG
Kappa Sigma
Memphis



BETTY LANGHAM
Kappa Delta
Montgomery, Alabama

MAJORIE LEAK
Zeta Tau Alpha
Lamar, Mississippi

FRANCES LESSER
Memphis



MIRIAM LEVI
Memphis

MARGARET LOARING-CLARK
Chi Omega
Memphis

PEGGY McALEXANDER
Gamma Delta
Greenwood, Mississippi



PEGGY McCALL
Gamma Delta
Holly Springs, Mississippi

REBECCA McCALL
Delta Delta Delta
Blytheville, Arkansas

JOHN McINTOSH
Kappa Sigma
Memphis



ELIZABETH McLENDON
Delta Delta Delta
Marianna, Arkansas

RUTH MANIS
Memphis

DIXIE MARTIN
Zeta Tau Alpha
McComb, Mississippi



EDWIN MAXWELL
Sigma Nu
Pickens, Mississippi

SARA MAXWELL
Kappa Delta
Memphis

SARA BETH MEADOWS
Delta Delta Delta
Memphis



FRESHMEN



JIMMY MICHAEL
Pi Kappa Alpha Memphis

JOHN MILLARD
Sigma Alpha Epsilon Memphis

JOHN MURDOCK
Kappa Sigma Memphis



AMY NELSON
Kappa Delta Memphis

LILLIAN NILES
Kappa Delta Memphis

ROBERT NORMAN
Sigma Nu Memphis



MARGARET NUNNERY Arcola, Mississippi
Zeta Tau Alpha

STANLEY OKEON Memphis

GEORGE RHEW PAGE Memphis
Sigma Alpha Epsilon



ANNE PATTERSON Benoit, Mississippi
Chi Omega

JANE PHELPS Memphis
Kappa Delta

FLORENCE PHYFER New Albany, Mississippi
Kappa Delta



GERALD PIERCE Memphis
Sigma Nu

FRANKLIN POE Memphis
Kappa Alpha

BILL PRYOR Camden, Arkansas
Sigma Alpha Epsilon

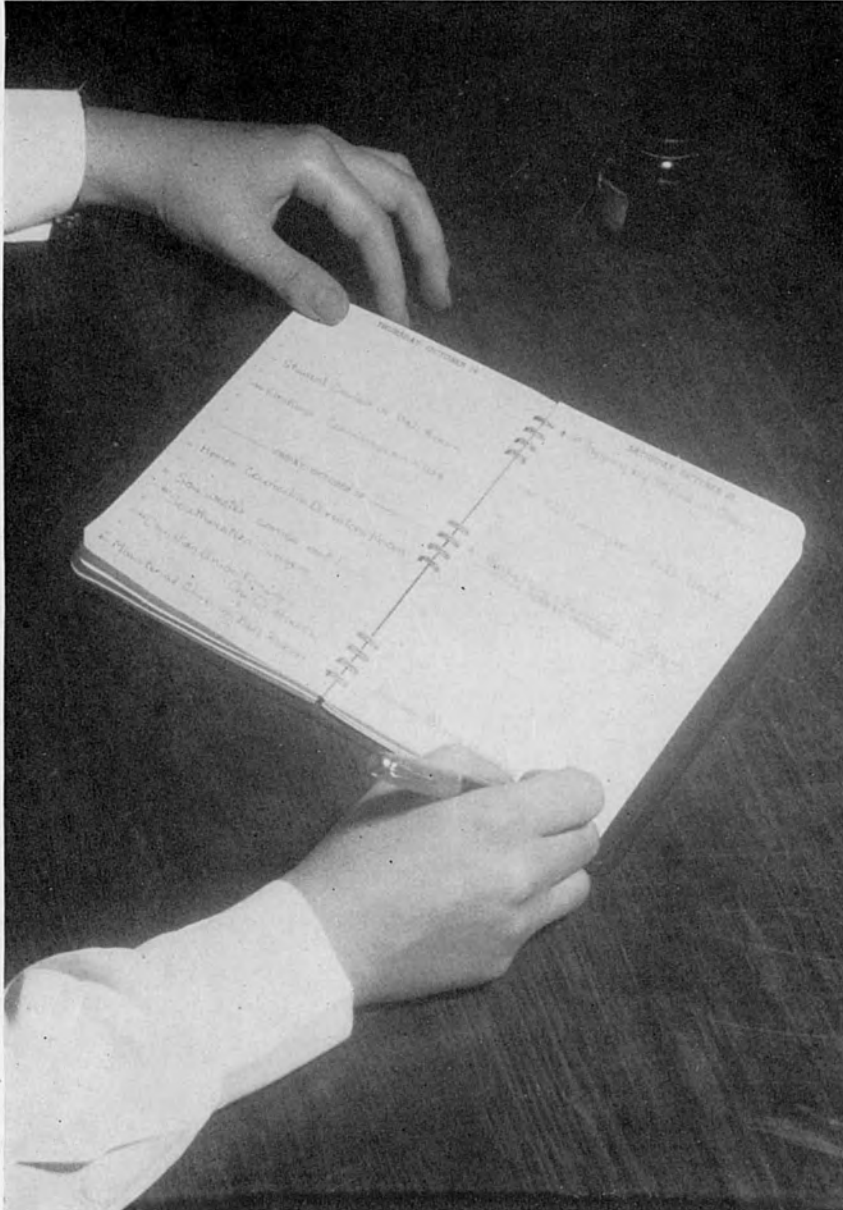


BILLY RAY Dyersburg, Tennessee
Kappa Alpha

LILLIAN REDDITT Greenwood, Mississippi

EMILY RICE Dallas, Texas
KAPPA DELTA

Organizations



STUDENT COUNCIL



First row: Everarde Jones, Nancy Conn, Virginia Wade, Maynard Fountain, Betty Lay. Second row: Berniece Wiggins, Betty Belk, Roberta Treanor, Mary Langmead, Julia Wellford, Dorothy Chauncey, Irma Waddell. Third row: Kitty Grey Pharr, Jane Bigger, Nancy Kizer, Billy Hightower, June Crutchfield, Jimmy Blankenship.

OFFICERS

President	MAYNARD FOUNTAIN
Vice-President	PAUL McLENDON
Secretary-Treasurer	VIRGINIA WADE
President of Senior Class	BETTY LAY
President of Junior Class	MARY LANGMEAD
President of Sophomore Class	JIMMY BLANKENSHIP
President of Freshman Class	BILLY HIGHTOWER
President of Men's Panhellenic Council	EVERARDE JONES
President of Women's Panhellenic Council	NANCY CONN
President of Alpha Theta Phi	JUNE CRUTCHFIELD
President of Torch	NANCY KIZER
President of Honor Council	JULIA WELLFORD
President of Christian Union Cabinet	BETTY BELK
President of Southwestern Players	ROBERTA TREANOR
President of Women's Undergraduate Society	DOROTHY CHAUNCEY
President of Y.W.C.A.	JANE BIGGER
President of Elections Commission	BERNIECE WIGGINS
President of Publications Board	KITTY GREY PHARR
Editor of Lynx	IRMA WADDELL
Editor of Sou'wester	BERNIECE WIGGINS

The Student Council, official representative organization of the student body, discusses relations among campus organizations, helps to shape student opinion, and serves as a medium between students and faculty.

THE HONOR COUNCIL



Seated: Kathryn Lynch, Nancy Kizer, Virginia Gibbins, Julia Wellford, Betty Belk, Dorothy Chauncey.
 Standing: Mac Turnage, Virginia Briggs, Barbara Burnett, William Ingram. Not pictured: Beverly Beane, James Baird.

OFFICERS

President	JULIA WELLFORD
Vice-President	BETTY BELK
Secretary	VIRGINIA GIBBINS

The Honor Council is composed of 13 representatives of the student body, elected by classes. It promotes the Honor Spirit and acts as a trial body for those accused of violating the system.

ALPHA THETA PHI



First row: Berniece Wiggins, June Crutchfield, Virginia Gibbins. Second row: Mabel Boone, Kitty Grey Pharr, William Ramsey, Dorothy Chauncey, Betty Bynum Webb.

OFFICERS

President	JUNE CRUTCHFIELD
Vice-President	BERNIECE WIGGINS
Secretary	VIRGINIA GIBBINS

Alpha Theta Phi is an honorary fraternity of both men and women who have completed at least two and one-half years of college work, maintaining an exceptionally high scholastic average. Its purpose is to recognize such students and to emphasize scholarship in the thoughts of other students.

CHI BETA PHI



Left to right—Rezneat Darnell, Robert Stobaugh, Mabel Boone, Gloria Walker, Sara Grey McCallum, Mary Louise Rhea.

OFFICERS

President	ROBERT STOBAUGH
Vice-President	SARAH GREY McCALLUM
Secretary	MARY LOUISE RHEA

Membership in Chi Beta Phi, national honorary scientific fraternity, is limited to those students who have completed not less than twenty semester hours in the laboratory sciences and mathematics with a high average in these fields.

Y.W.C.A. CABINET



Front row: Dorothy Chauncey, Jane Bigger, Betty Bouton. Second row: Betty Belk, Jane Kilvington, Julia Wellford, Betty Shea, Nancy Lee Robinson. Not pictured: Virginia Gibbins.

OFFICERS

President	JANE BIGGER
Vice-President	VIRGINIA GIBBINS
Secretary	DOROTHY CHAUNCEY
Treasurer	BETTY BOUTON

CABINET

Devotional	BETTY BELK
Social Service	NANCY ROBINSON
Art and Publicity	JUNE CAMP
Music	JULIA WELLFORD
Social Activity	BETTY SHEA
Membership	JANE KILVINGTON

The Y.W.C.A. has a three-fold purpose: "To realize full and creative life through a growing knowledge of God, to have a part in making this life possible for all and to promote friendship among the students and cooperation in campus activities."

TORCH



Front row: Virginia Gibbins, Nancy Kizer, Betty Belk. Second row: Dorothy Chauncey, June Crutchfield, Kitty Grey Pharr, Jane Bigger, Berniece Wiggins. Not pictured: Virginia Wade.

OFFICERS

President	NANCY KIZER
Vice-President	VIRGINIA GIBBINS
Secretary	BETTY BELK

Torch, honorary society for senior women, is patterned after Mortar Board, which order it is petitioning. This organization strives to recognize women who have attained high standards of leadership and scholarship throughout their college career.

WOMEN'S DORMITORIES GOVERNING BOARD



Seated: Nancy Kizer, Betty Belk, Kathryn Lynch. Standing: Virginia Peoples, Virginia Briggs, Hazel Brown, Martha Pittman, Betty Lay, Mary Langmead.

OFFICERS

President	BETTY BELK
Vice-President	BETTY LAY
Secretary	KATHRYN LYNCH

The Women's Dormitories Governing Board is an elected representative body which makes and enforces the rules governing the conduct of women students living in Robb, Calvin and Evergreen Halls.

CHRISTIAN UNION CABINET



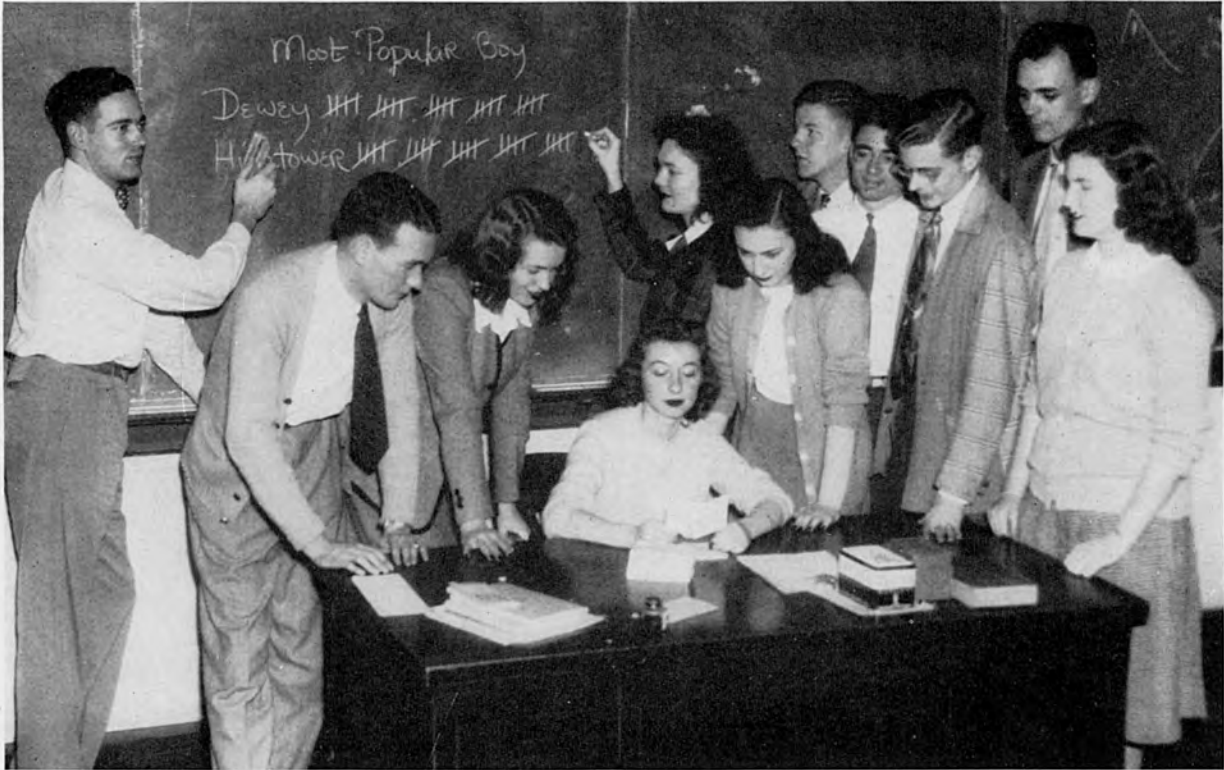
Front row: Betty Bynum Webb, Hazel Brown, Jane Bigger, Ernest Flaniken, Carolyn Cuningham, Betty Belk, Julia Wellford, Virginia Gibbins, Kitty Grey Pharr. Back row: Sue Henry, Bill Bell, Stanley Williamson, Mac Turnage.

OFFICERS

President	BETTY BELK
Vice-President	JULIA WELLFORD
Secretary	CAROLYN CUNINGHAM

The Christian Union Cabinet is made up of the officers of religious groups on the campus. In addition, eight persons are selected from the student body at large. The Cabinet directs student religious activities, and each year sponsors a week of prayer and consecration.

ELECTIONS COMMISSION



Standing: Ed Quinn, Mabel Boone, Bob Norman, Ernest Flaniken, Maynard Fountain, Jim Wade, Elizabeth Ann Fairleigh. Around desk: Harry Hawken, June Crutchfield, Berniece Wiggins, Jane Bigger.

OFFICERS

President	BERNIECE WIGGINS
Vice-President	JUNE CRUTCHFIELD
Secretary	MABEL BOONE

The Elections Commission, composed of one member from each fraternity, sorority, non-fraternity, and non-sorority group, insures fair student elections, supervises balloting, and penalizes individuals or organizations not adhering to the regulations determined by the Commission.

THE LYNX



Back row: Harriet Causey, May Wallace, Hazel Brown, Christine Traicoff, Mac Turnage, Jimmy Blankenship, Peggy Parsons, Virginia Ann Withers, Frances Perkins, Gloria Vaughn, Betty Langham. Second row: Carolyn Cuningham, Sara Anne Elliott, Garnet Field, Lucile Maury, Betty Shea, Lucille Hamer, Amy Nelson, Ann Pridgen, Amelia Brent, Ann Patterson, Barbara Burnett. Seated: Lily Ann Beggs, Irma Waddell, Taylor Franks.

STAFF

Editor	IRMA WADDELL
Business Manager	TAYLOR FRANKS
Assistant Editor	LILY ANN BEGGS
Assistant Business Editor	VIRGINIA ANN WITHERS

The Lynx is the Southwestern Annual Publication

THE SOU'WESTER



Seated: Kenneth Kressenberg, Berniece Wiggins, Tom Goswick, Bill McAfee. Second row: Claire James, Jane King, Garnet Field, Amelia Brent, Lillian Niles, Dale Guenther, Jeanne O'Hearne, Betty Bouton, Florence Phyfer. Third row: Jean King, Sara Ann Elliott, May Wallace, Ann Pridgen, Harriet Causey, Carol Symons, Peggy Gallimore, Lucille Hamer, Mary Lou Nichols, Mary Jean Hankins. Fourth row: Mary Louise Rhea, Lucile Maury, Mary Nell Grainger, Jim Wade, Ed Maxwell, Amy Nelson, Jane Kilvington.

STAFF

Editor BERNIECE WIGGINS
 Business Editor BILL McAFEE
 Associate Editors KENNETH KRESSENBERG and TOM GOSWICK

The Sou'wester is the bi-weekly news publication of the student body.

PUBLICATIONS BOARD



Seated: Kitty Grey Pharr. Standing—left to right: Mabel Boone, Mac Turnage, Sue Robinson.

OFFICERS

President	KITTY GREY PHARR
Treasurer	C. L. SPRINGFIELD
Faculty Advisors	M. L. MacQUEEN, JOHN OSMAN

The purpose of the Publications Board is to exercise supervision and control over student publications. All such publications are authorized by the Board, which also selects the editors and makes financial appropriations to them.

The board is composed of a president, elected by the student body, an elected member from each of the three upper classes, a faculty member appointed by the president of the College, and a permanent treasurer, the Bursar of the College.

STYLUS



Front row: Irma Waddell, Florence Phyfer, Virginia Gibbins, Sara Grey McCallum, Bill Ramsey. Back row: Berniece Wiggins, Jim Wade, Sue Robinson, May Wallace. Not pictured: Sarah White Barth.

OFFICERS

President	JIM WADE
Vice-President	IRMA WADDELL
Secretary	SARAH WHITE BARTH
Treasurer	SUE ROBINSON

Stylus is an honorary society designed to recognize and stimulate literary activity on the campus. Members are selected on the merits of papers submitted in competition. The Stylus Journal is the annual publication of the club.

THE PLAYERS



Left to right: Mac Turnage, Jane Kilvington, Vadis Jeter, Berniece Wiggins, Roberta Treanor, Everarde Jones, Ernest Flaniken. Not pictured: Terry Einstein.

OFFICERS

President	ROBERTA TREANOR
Vice-President	BERNIECE WIGGINS
Secretary-Treasurer	TERRY EINSTEIN

The Southwestern Players is an honorary organization for promoting interest in the drama and for learning the skills of the theatre. Membership is taken from heelers, or apprentices, who have contributed the equivalent of a year's work in dramatics.

CANTERBURY CLUB



Front row: Harriet Causey, Hazel Brown, Virginia Wade, Garnet Field, Sara Beth Meadows, Jane Kilvington, Lucile Maury, Carolyn Cuninghame, Mary Louise Rhea, Nancy Robinson. Second row: Sara Anne Elliott, Kay Hoag, Amelia Brent, Mary Nell Grainger, Becky McCall, May Wallace, Frances Perkins, Julia Wellford, Betty Smith, Stella Jones, Jeanne O'Hearne, Kathryn Lynch.

OFFICERS

President	JANE KILVINGTON
Vice-President	PATSY PAGE MATHEWES
Secretary	LOUISE WILBOURN
Treasurer	CAROLYN CUNINGHAM

The purpose of the Canterbury Club is to promote worship, fellowship, study, and service, to bring students together irrespective of religious affiliation, to discuss problems affecting the college student and the relation of religion to everyday life. Meetings are held twice a month, with various ministers of the city leading discussions.

MINISTERIAL CLUB



Front row: Robert Cobb, Leslie Tucker, Ernest Flaniken, Bill Bell, Leslie Thompson. Second row: Wheeler Carlton, Robert Wherrit, Mac Turnage, William Ramsey, John Wilson. Not pictured: Denby Brandon.

OFFICERS

President	ERNEST FLANIKEN
Vice-President	DENBY BRANDON
Secretary-Treasurer	LESLIE TUCKER

The Ministerial Club is composed of those students studying for the ministry, and others interested in discussing current religious and social problems. The club supports all religious activities on the campus and frequently holds devotional services at various institutions in the city.

WOMEN'S UNDERGRADUATE BOARD



Front row: Kathryn Lynch, Dorothy Chauncey, Nancy Kizer. Second row: Jane Bigger, Roberta Treanor, Mary Langmead, Virginia Wade, Betty Belk, June Crutchfield, Betty Lay.

OFFICERS

President	DOROTHY CHAUNCEY
Vice-President	NANCY NELL KIZER
Secretary-Treasurer	KATHRYN LYNCH

The Women's Undergraduate Board forms and puts into effect regulations governing freshmen women. To assist the new students in orientation, the Board publishes a "co-ed" handbook at the beginning of the year.

CHOIR



First row: Taylor Franks, Sara Beth Meadows, Julia Wellford, Ann Patterson, Ann Burkett, Margie Vickers, Jane Phelps, Muriel Clary, Mary Ann Smith, Betty Bynum Webb, Professor Tuthill. Second row: Carolyn Cuningham, Betty Langham, Mary Lou Almeda, Mary Nell Grainger, Jacqueline Fish, Sarah White Barth, Virginia Prettyman, Suzanne Thomas. Third row: Betty Sikking, Alice Allein, Mignon Dunn, Sara Latimer, Jeanne O'Hearne, Carolyn Reynolds, Amelia Brent, Patricia Caldwell, Virginia Briggs, Virginia Kimbel, Florence Phyfer, Vadis Jeter, Billye Sutton, Frances Perkins, Joy Upshaw. Fourth row: Lucille Hamer, Bill Ramsey, Martha Pittman, Sara Maxwell, Mary Alma Church, Virginia Ann Withers, Becky McCall, Stanley Williamson, Wilmary Hitch, Anna Louise Rother, Margaret Loaring-Clark, Jeanne Amis, Christine Traicoff, Frances Fish, Margaret Hardwick, Hilma Seay.

OFFICERS

President	VIRGINIA GIBBINS
Vice-Presidents	PEGGY LAUGHTER and FRANCES FISH
Secretary	BETTY BYNUM WEBB

The Southwestern Singers, an a capella choir, is the primary musical organization on the campus. It performs at vespers, regular chapel services, and on occasion before the public of Memphis.

PI INTERSORORITY



Front row: Barbara Bowden, Berniece Wiggins, Mary Langmead, June Crutchfield, Camille Bailey, Betty Bouton, Jeanette Hord.

Left line—front to back: Claire James, Patricia Caldwell, Westy Tate, Sara Latimer.

Right line—left to right: Jane Ogden, Betty Falls, Jane Phelps, Peggy Hale.



JULIA WELLFORD
May Day Pi

OFFICERS

High Pi	JUNE CRUTCHFIELD
Low Pi	MARY LANGMEAD
Secretary-Treasurer	CAMILLE BAILEY

Pi, a national intersorority, is designed to promote friendly relations among the various sororities on the campus. It was established at Randolph-Macon in 1901. Each Tuesday the members wear green and white, the color of the group.

S. T. A. B.



Left to right: Jane Bigger, Becky McCall, Janie V. Paine, Lucille Hamer, Hilma Seay, Nancy Kizer, Roberta Treanor, Betty Long, Amelia Brent, Peggy Gallimore, Bettye Lee Hancock, Patsy Page Mathewes.

OFFICERS

President	ROBERTA TREANOR
Vice-President	JANE BIGGER
Secretary-Treasurer	PATSY PAGE MATHEWES
Founders' Day Member	LUCILLE HAMER

S.T.A.B. is an intersorority founded at Randolph Macon in 1899. It was organized for purely social purposes and attempts to create a feeling of harmony among the sorority women on the campus. Each Friday the members wear red and white, the colors of the group.

S. A. B. A.



First row: Billy Long, Berniece Wiggins, Bill McAfee, Billy Hightower, Tex Kressenberg, Pat Caldwell, Jim Wade. Second row: Jane Bigger, Peggy Haile, Peggy McCall, Rachael Utley, Betty Kilgore, Mary Nell Grainger, Jane King, Jean King, Virginia Prettyman, Becky McCall. Third row: Martin Hollinger, Mary Belle Currier, Peggy Gallimore, Dot Hogen, Ann Fairleigh, Tom Goswick, June Crutchfield, Ginger Thomason, Jane Ogden, Ernest Flaniken.

OFFICERS

President	BILL McAFEE
Vice-President	BILLY HIGHTOWER
Secretary-Treasurer	PATRICIA CALDWELL

Southwestern Athletic Backing Association was organized in the fall of 1945 to promote school spirit and interest in college athletic functions.

Features



The Beauties



FRANCES PERKINS



BETTY SCHNEIDER



VINTON COLE



HILMA SEAY



SARA LATIMER

Portraits by George Hayley

Hall of Fame



JUNE CRUTCHFIELD

The highest honor that can be awarded a senior at Southwestern is to be numbered in the Hall of Fame.

Candidates for membership are nominated by the Student Council, and the final selection is made by the presidents of the Sophomore and Junior Classes, the vice-president of the student body, and the president and dean of the college. Indispensable qualifications are leadership, scholarship, character, and service.



BETTY BELK



MAYNARD FOUNTAIN



JANE BIGGER



BERNIECE WIGGINS

The Popularity Winners



JANE BIGGER
"Miss Southwestern"



LUCILLE HAMER
Most Attractive Coed



WILLIAM B. INGRAM, JR.
Best All-Round Boy



BILLY MARKS HIGHTOWER
Most Popular Boy



BETTY BOUTON
Most Stylish Coed



TRENT WOOD
Most Handsome Boy

April Fool Carnival 1946



KING BILLY HIGHTOWER and QUEEN BETTY BOUTON



EVERARDE JONES
MARGARET HARTHCOCK
NANCY NELL KIZER
HARRY HAWKEN



MAYNARD FOUNAIN
LUCILLE HAMER
HILMA SEAY,
JIM WADE



BILL INGRAM
MARTHA BIRDSONG
JANE BIGGER
ED DEWEY

LORDS AND LADIES



ANN PATTERSON
AND FLIP



JULIA WELLFORD



CARLOS KAKOURIS



AOPI

A Cup From Jane to Harry

Below: Kappa Sigma, the Winner



Below: Delta Delta Delta



Stunt Night

Kappa Alpha



Below: Kappa Delta

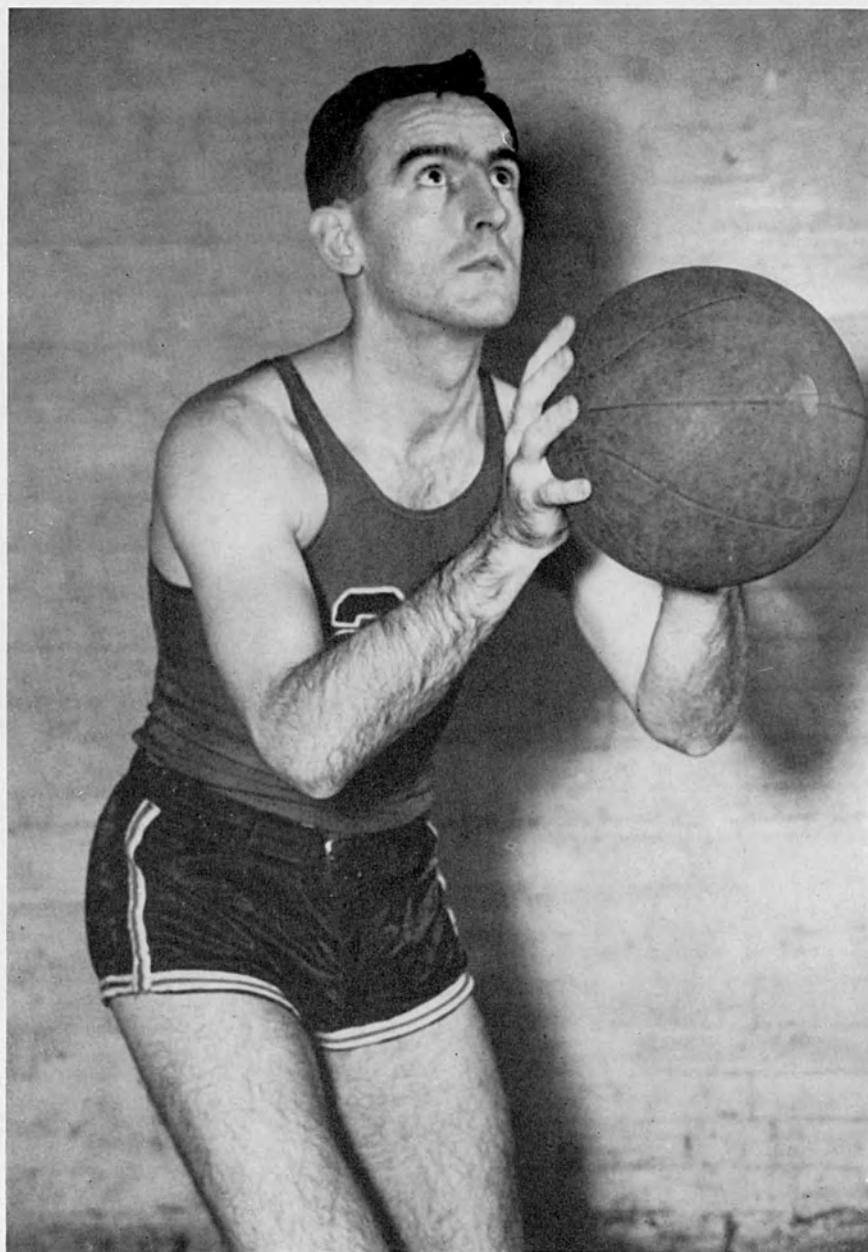


Below: Gamma Delta

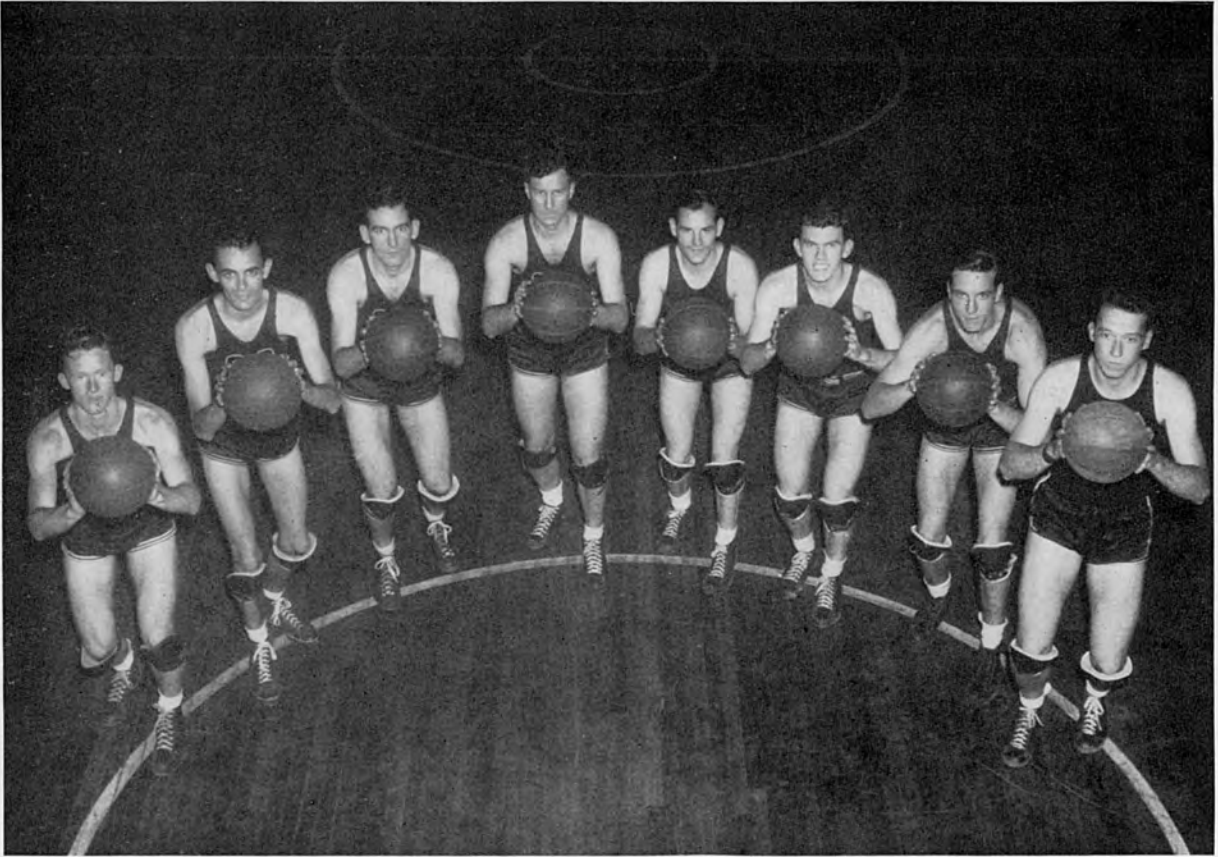




ATHLETICS



BASKETBALL



THE TEAM

JOHN WILLIFORD
JIM WADE
VINCENT SPLANE
WILLIAM HAYNES

BILL EGBERT
BILL BELL
FLETCHER SCOTT
BLAIR WRIGHT



JOHN MURDOCK

JIM WADE



B. B. BOWEN

GOLF



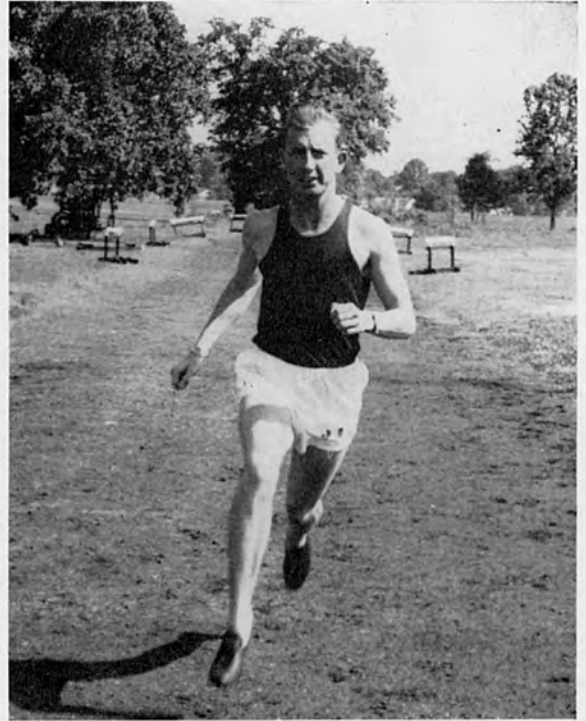
WINSTON CHEAIRS

DICK SIMMONS

TRACK



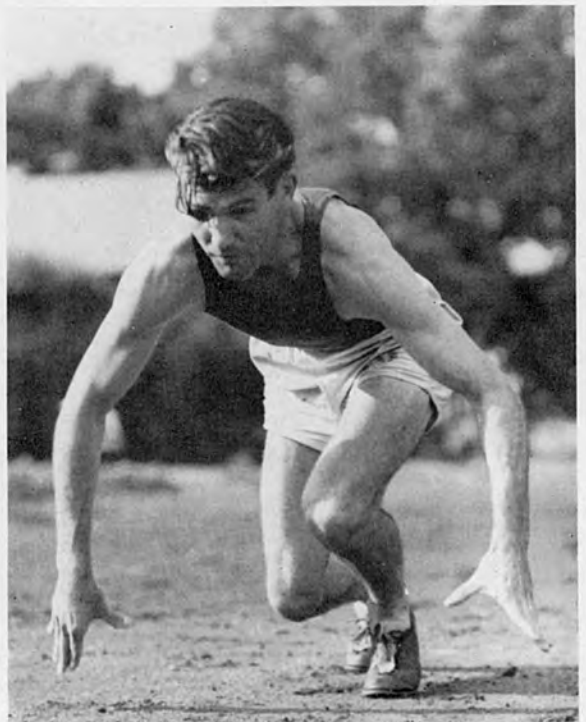
FLETCHER SCOTT



EVIN PURDUE

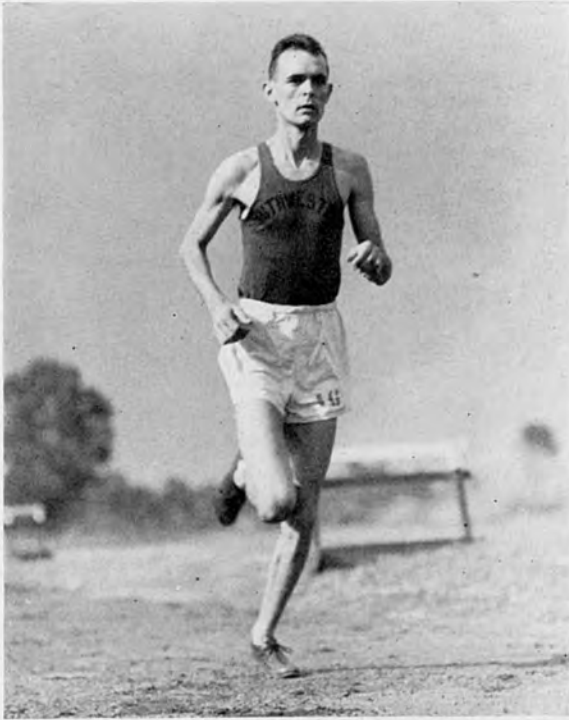


FREEMAN MARR

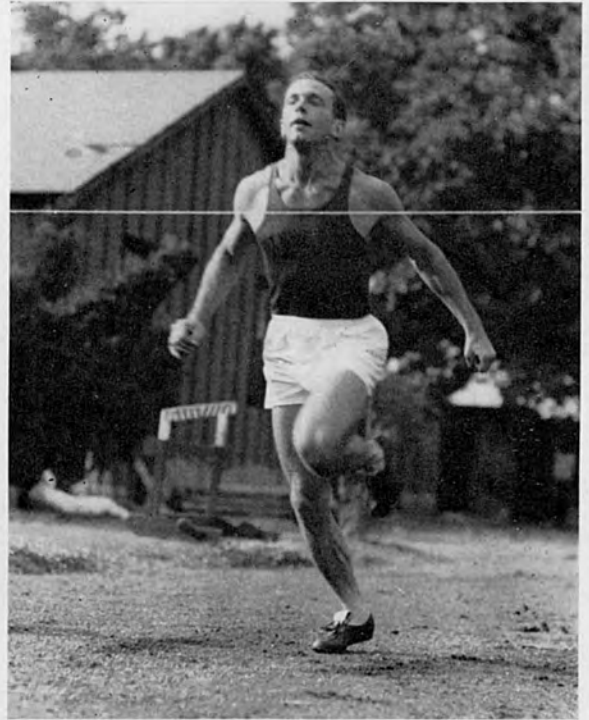


DON WALTON

TRACK



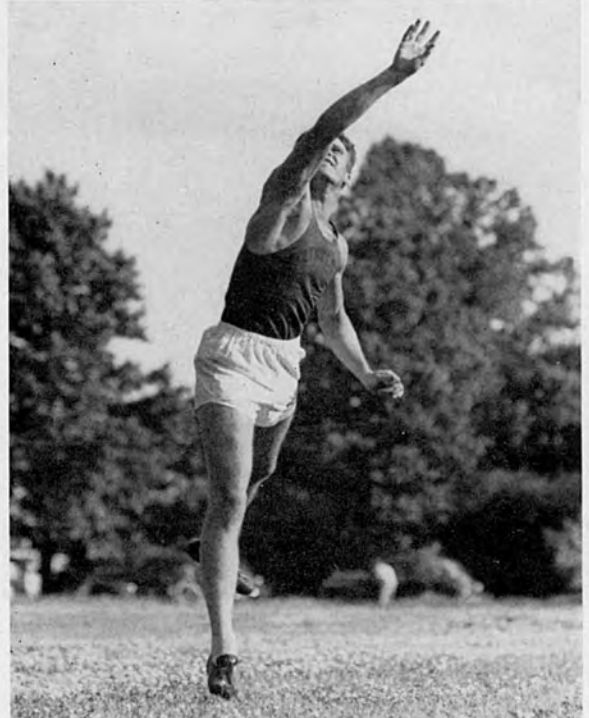
JIM WADE



FRANK BOSWELL



FRANK BOSWELL



BILL WEST

GIRLS' BAS



ZETA TAU ALPHA
The Winners



CHI OMEGA



KAPPA DELTA

KETBALL



A O Pi



INDEPENDENTS



TRI DELTA

WOMEN'S



VOLLEYBALL



TENNIS



ARCHERY

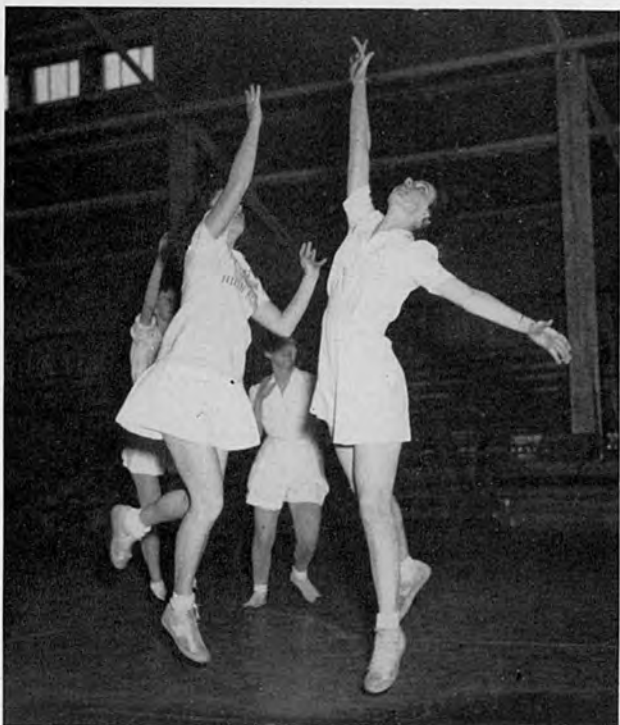
ATHLETICS



BADMINTON



BALLET



BASKETBALL

SECOND SEMESTER STUDENTS

FRESHMEN

Louis M. Agiven
 Robert Paul Baldwin, Jr.
 David M. Barber
 Ralph M. Bennett
 Ned O. Berry
 Fred Blake, Jr.
 Dick Bolling, Jr.
 John P. Bouton
 Charles F. Bradley
 John T. Brakefield
 Al Stanley Braver
 Jim S. Brown
 Russell E. Bryant
 William T. Bush
 Clarence M. Camferdam
 Kathryn Clark
 Mordeis C. Commander
 Betty Connally
 Leland Corneille
 Mabel Cranford
 Latham P. Daniel
 Billie Brock Davidson
 Charles Davis
 Eugene Daws
 Robert DeGraffenreid
 Robert Dillman
 W. F. Elbrecht, Jr.
 Bernard Finkelstein
 William H. Fitchpatrick, Jr.
 Charles H. Fleet
 Robert Fowler, Jr.
 Gerald Gehringer
 Ben Gilliland, Jr.
 Herbert Glenn
 William Wallace Haley
 Walter Haun
 Harry Hendley
 Arthur B. Hugo, Jr.
 James D. Johnson
 Paul F. Cates
 J. W. Kirkpatrick
 Raymond M. Krutz
 William G. Lanham, Jr.
 William I. LaRue
 William L. Lawhorn
 James L. Lawhorn
 James C. Lewis
 James H. Locke
 David McCully
 Edward MacDonald
 Margaret McGown
 Lois McGregor
 Alexander McLarty
 George Marberry
 Charles Marcrum
 Tom B. Miller
 William Edwin Mitchell
 Beverly J. Morrow
 Charles C. Nickas
 Stanley Okeon

Raymond Parham
 Willard C. Partin
 Wayne Pate
 Ruth Patrick
 Joseph Payne
 James C. Reid, Jr.
 Edward K. Reynolds
 Jack D. Ringer
 Israel Rosen
 Joseph Roulhac
 Raymond Roush
 William T. Rowe
 J. C. Scianni
 Marvilene Scroggs
 Bee H. Sinks, Jr.
 James D. Stubbs
 Gerald Sweatt
 William Thurmond
 John B. Travis
 Richard E. Travis
 Buford Utley, Jr.
 William Van Gilder
 Clarence Walters, Jr.
 William Walters
 Samuel Watson
 John Williford
 Richard Wood
 Howard Trent Wood
 Robert Yarbrough

SOPHOMORES

Sonya Alperin
 Charles Hamilton Baker
 Bryant K. Biddle
 Winston Cheairs, Jr.
 Rosalie Cooper
 Alexander M. Cuninghame, Jr.
 Craft Dewey
 Raymond B. Frye
 Jack Hoehn
 Edward Horton
 James Jeffery
 David L. Jolly
 Freeman Marr
 Leland Mitchell
 Clarence Picard
 James E. Roper
 Herzl Shankman
 John R. Simmons
 Christeve Skinner
 Chalmers Walter
 Stanley Trezevant, Jr.
 John Vance
 Winford Veale, Jr.
 Frank Wright

JUNIORS

Frank Crowson
 John C. Darby
 Edward Dewey

Charles Frank
 M. A. Guzman
 Noble Hicks, Jr.
 Rufus William Irby
 Sara Latimer
 Joseph Pearlman
 Harland Smith
 Richard C. Smith
 Jimmy R. White
 John Maxwell Wilson

SENIORS

William F. Byrd, Jr.
 Thaddeus H. Doggett
 Charles Evans, Jr.
 Mrs. Marvalene Floyd
 Mahlon M. Harlan
 I. C. Hemmen
 Clyde Malone
 William Ramsay

UNCLASSIFIED AND SPECIAL

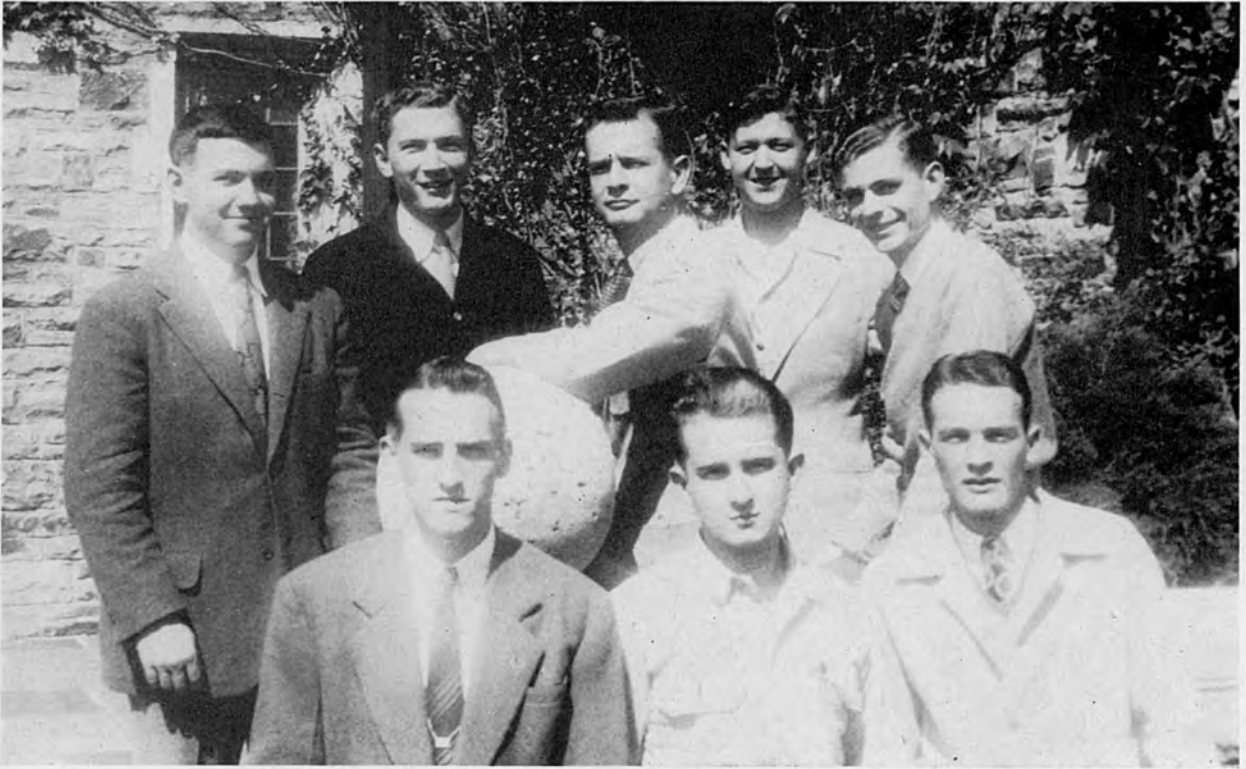
Arthur Willis Akridge
 Mary Anderson
 William L. Armstrong
 Jeff Edward Balfour
 Thomas K. Ballard
 William Dewey Baskin, Jr.
 Paul James Batson
 Tremon O. Baucum
 Frank H. Berfield
 Hugh Black
 Charles N. Blaine
 David E. Boesvert, Jr.
 William J. Bolton
 Howard A. Bryant
 Jack Carlisle
 John F. Connors, Jr.
 Carroll Cowan, Jr.
 Hugh Davidson, Jr.
 Samuel R. Donelson
 Donald Edwards
 Clarence R. Elam
 Bernard Epstein
 Eugene Fisher
 Clyde Curtis Flanigan, Jr.
 Earl Foshee
 Z. V. Freeman
 John Johnson Frost
 Richard W. Green
 Harold T. Griffin
 James W. Griffith
 Emmett R. Hall
 J. B. Harrison, Jr.
 A. G. Hartog
 Marvin H. Hawks
 William D. Haynes
 Mary D. Hood

Ross Humphrey
 Alfred L. Ingram
 William J. Johnson
 William M. Johnson
 Julian Jones
 Clarence Kaiser
 Howard C. Kee
 Robert L. Keller
 Ira M. Kelley
 Elizabeth Kendrick
 Billy R. Lewelling
 John McKee
 John McLemore
 John MacLeod
 Gerald Malmo, Jr.
 Gerald Martin
 Lowry E. Maxwell
 Una Mechling
 John Meek, Jr.
 Thompson W. Meriwether, Jr.
 Guy Miller
 Charles Montgomery, Jr.
 William Murphy
 Emmett C. Neill, Jr.
 Carl A. Nelson, Jr.
 Wade J. Newhouse, Jr.
 William Paden
 W. J. Parminter
 Jack Parry
 Harlan Patton
 Iris Annette Pearce
 Evin Perdue
 Horace Pierotti
 Robert S. Pitts
 John W. Rast
 John W. Richards, Jr.
 Donna Robinson
 Sidney L. Robinson
 Stanley Schleifer, Jr.
 Mrs. Margaret Shackelford
 John Simonton
 Carl A. Smith, Jr.
 Vincent Splane, Jr.
 Alexis Stathis
 Mrs. Mary Stidham
 Tullious Stondemayer
 Wesley Taylor
 Eugene Thomas
 Harriet Thomas
 Harold Thompson
 Norman Thompson
 Leslie Tucker
 Rosemary Twist
 Robert Utter
 Barbara Van Duzee
 Donald Walton
 William West
 Auvergne Williams, Jr.
 Leonard E. Wilson
 James L. Wiygul

Fraternities and Sororities



MEN'S PANHELLENIC COUNCIL



First row, left to right: James Moorhead, Howard Hurt, Harry Hawken. Second row: Ed Dewey, Billy Hightower, Everarde Jones, Dave Jolly, Maynard Fountain. Not pictured: Jim Wade, Bob Norman.

OFFICERS

President	EVERARDE JONES
Vice-President	BILLY HIGHTOWER
Secretary-Treasurer	JIM WADE

The Men's Panhellenic Council is composed of representatives from the five fraternities now active on the campus. Its purpose is to exercise a measure of control over fraternity activities.

KAPPA ALPHA



Back row: John Billings, Rezneat Darnell, Frank Gitussi, Jimmy Jeffery, Edward Maxwell. Second row: Ernest Parham, Franklin Poe, Dick Smith, Robert De Graffenreid, Marvin Hawks, Jimmy Stubbs. Front row: Auvergne Williams, Harland Smith, Jim Wade, Jimmy Moorhead. Not pictured: Russell Bryant, John Hancock.



OFFICERS

President	JIM WADE
Vice-President	P. W. SCHNEIDER
Secretary-Treasurer	HUGH MURRAY

KAPPA SIGMA



First row: Clyde Malone, Frank McKnight, Bill Clary, Bobby Cobb, Tom Goswick, Guy King, Bill Sutherland, Ted Johnson, Everarde Jones, Sam Watson. Second row: Bob Stobaugh, Jerry Flippin, James Blankenship, Bill Ingram, Harry Hawken, Dick Bolling, Maclyn Turnage, John Murdock, Bill McAfee. Third row: Kenneth Kressenberg, Bill Battaille, Ben Gilliland, Walter Haun, John McKee, Dudley Cannon, Ted Hay, Frank Allen, J. C. Scianni, Buck Walter, Charles Bradley, Jake Lewis, Guy Miller, Bryant Biddle, Bill Bush, Herbert Glenn. Not pictured: Charles Cash, John Gideon.



OFFICERS

Grand Master	HARRY HAWKEN
Grand Procurator	BILL INGRAM
Grand Master of Ceremonies	DICK BOLLING
Grand Scribe	JIMMY BLANKENSHIP
Grand Treasurer	MACLYN TURNAGE

PI KAPPA ALPHA



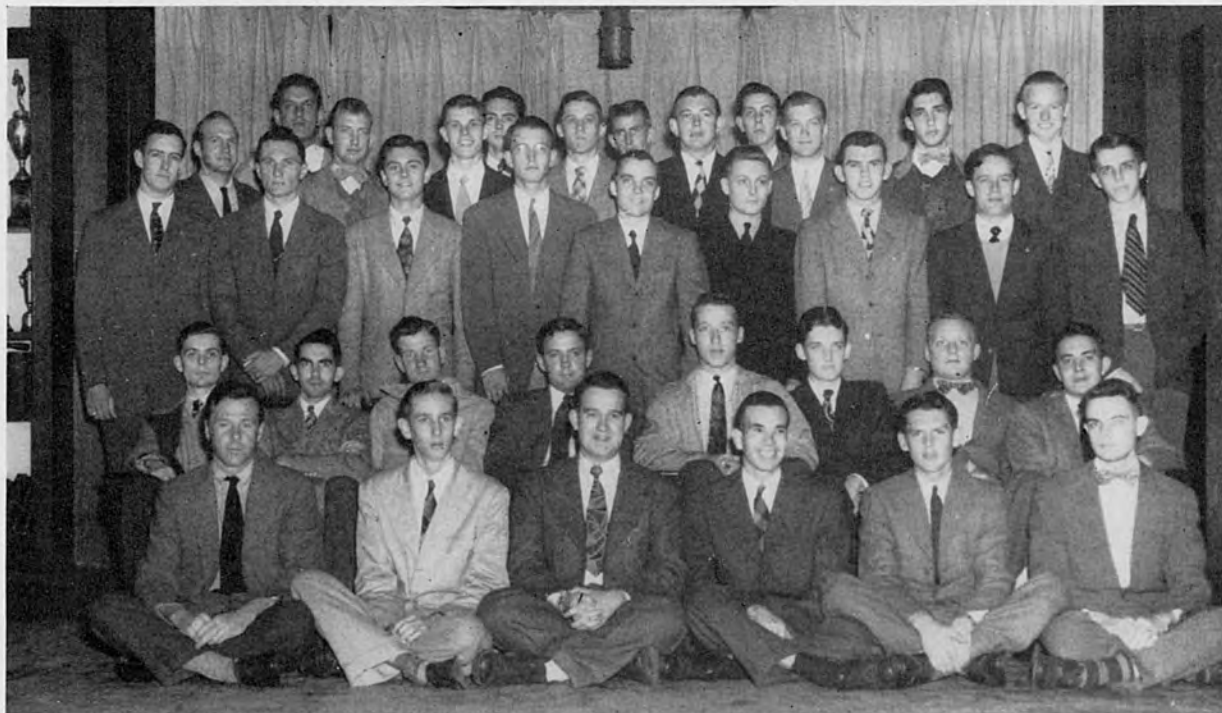
Back row: Mike Guzman, Gerald Sweat, Dave Barber, Dave McCully, Bill Walton, Charles Baker, Harry Locke. Third row: Dave Jolly, Jack Simonton, Charles Fleet, Clarence Camferdam, Ted Baucum, Howard Hurt. Second row: Dave Boesvert, Jimmy Griffith, Buford Utley, Dave Vaught, Don Walton, Vernon Ingram. First row: Ira Carter, Brook Thompson, Paul Kates, Tom Glenn, French Harris. Not pictured: Bob Utter, Ed Quinn, Bob Pitts, Thad Doggett, Jack Carlisle, Bill Haley.



OFFICERS

President	HOWARD HURT
Vice-President	ED QUINN
Secretary	MIKE GUZMAN
Treasurer	DAVE JOLLY, JR.

SIGMA ALPHA EPSILON



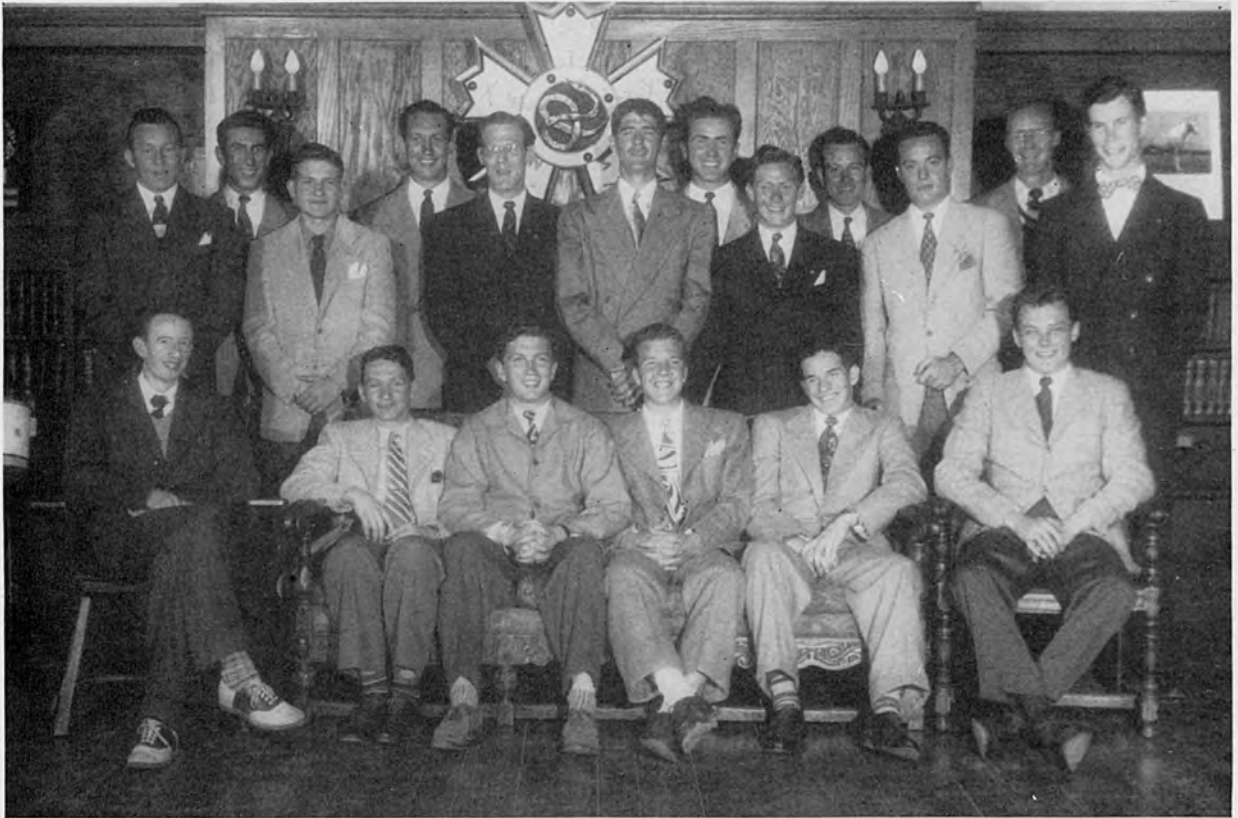
Front row: Winston Cheairs, Ralph Teed, Billy Long, Nimrod Thompson, Billy Brock Davidson, Rhew Page. Second row: Maynard Fountain, Paul Barret, Alexander Cuningham, Ed Dewey, Blair Wright, Stanley Trezevant, Rembert Donelson, Berson Frye. Third row: John Bouton, Bill Pryor, Trent Wood, Jack McLeod, Carroll Cowan, Jack Frost, Bill Bell, B. B. Bowen, Leslie Thompson. Fourth row: Craft Dewey, Evin Purdue, Joe Roulhac, Martin Hollinger, Dick Simmons, Jack Hoehn, H. Palmer Rowe, Denby Brandon. Fifth row: Charles Frank, Bill Cox, Freeman Marr, Kyle MacLeod.



OFFICERS

Eminent Archon	ED DEWEY
Eminent Deputy Archon	BLAIR WRIGHT
Eminent Recorder	ALEXANDER CUNINGHAM
Eminent Treasurer	LESLIE TUCKER

SIGMA NU



Back row: Bill Snipes, Harlan Patton, Dick Wood, Conley Hemmen, Ben Arnold, John Brakefield, Paul Dillman, Charles Marcum, John Meek, Gene Daws, Edward MacDonald, Jack Ringer. Front row: Charles Dean, Kirby Baker, Billy Hightower, Bob Norman, Gerald Carpenter, Emmett Hall. Not pictured: Bill Mitchell, Bill LaRue, John Richards.



OFFICERS

Commander	BILLY MARKS HIGHTOWER
Lieutenant-Commander	ROBERT NORMAN
Recorder	EMMETT HALL
Treasurer	KIRBY BAKER

The Greeks

At Play



WOMEN'S PANHELLENIC COUNCIL



NANCY CONN	President, Alpha Omicron Pi
VIRGINIA GIBBINS	Vice-President, Zeta Tau Alpha
VIRGINIA WADE	Secretary, Delta Delta Delta
NANCY NELL KIZER	Treasurer, Chi Omega
JANE BIGGER	Representative, Alpha Omicron Pi
BETTY BOUTON	Representative, Delta Delta Delta
BETTY JEAN CULLINGS	Representative, Gamma Delta
ELIZABETH FAIRLEIGH	Representative, Gamma Delta
FRANCES FISH	Representative, Zeta Tau Alpha
ANN McCONNELL	Representative, Kappa Delta
ROBERTA TREANOR	Representative, Kappa Delta
JULIA WELLFORD	Representative, Chi Omega



KIZER
PHARR
WALLACE
WELLFORD
McMAHAN
ALLEIN



ALLEN
AMIS
BAILEY
BAKER
BEANE
CARROLL



COLE
CUNNINGHAM
CURRIER
FALLS
FRANKS
GILLESPIE



GOOCH
HAMER
HARDING
HILL
HITCH
HOLLENBERG



KILLORIN
KLINKE
KNIGHT
LOARING-CLARK
MATHEWES
MAURY



OGDEN
PAINE
PATTERSON
PERKINS
STEVENS
THOMAS



THOMASON
THOMPSON
TRAICOFF
VAUGHN
WADDELL
WALKER



WILBOURN
WILLIAMSON
WITHERS



CHI OMEGA

KAPPA BETA CHAPTER

Established at Southwestern in 1922

OFFICERS

President	NANCY KIZER
Vice-President	KITTY GREY PHARR
Secretary	MAY WALLACE
Treasurer	JULIA WELLFORD

MEMBERS

1946

NANCY KIZER
KITTY GREY PHARR
MARIE GOOCH
MARION HOLLENBERG

DOROTHY SCHMIED KNIGHT
PATSY MATHEWES
LOUISE WILBOURN
EMILY WILLIAMSON

1947

MARY ANN KILLORIN
MARY ANN METZGER KLINKE
NANCY McMAHAN
FRANCES PERKINS

BARBARA THOMPSON
IRMA WADDELL
MAY WALLACE
JULIA WELLFORD

1948

HARRIET ALLEN
CAMILLE BAILEY
PEGGY BAKER
BEVERLY REANE
MARTHA CARROLL
CAROLYN CUNINGHAM
MARY BELLE CURRIER
TAYLOR FRANKS
MINNIE LEE GILLESPIE
LUCILLE HAMER
MAY MAURY HARDING

WILMARY HITCH
LUCILE MAURY
JANE OGDEN
JANIE V. PAINE
MARY ANN ROBERTSON
VIRGINIA THOMASON
CHRISTINE TRAIKOFF
GLORIA VAUGHN
MADELON WALKER
VIRGINIA ANNE WITHERS

1949

ALICE ALLEIN
JEANNE AMIS
VINTON COLE
BETTY FALLS
KATE HILL

MARGARET LOARING-CLARK
ANNE PATTERSON
PATRICIA STEVENS
SUZANNE THOMAS



BIGGER
SPALDING
JETER
JAMES
BOWDEN



ALSTON
AVERY
BEGGS
BOUTON
BRADSHAW



BROWN
CONN
FLANIKEN
HAILE
HANCOCK, B. L.



HANCOCK, J. A.
HILL
HOAG
JACKSON
LONG



MELHORN
PAGE
PRIDGEN
QUARLES
RIER



SCHNEIDER
SEAY
SHARPE
SHEA
SHEPHERD



SILER
SMITH
STEWART
UPSHAW
VILLYARD



WALKER, B.
WALKER, G.



ALPHA OMICRON PI

KAPPA OMICRON CHAPTER

Established at Southwestern in 1925

OFFICERS

President	JANE BIGGER
Vice-President	JOYCE SPALDING
Recording Secretary	VADIS JETER
Corresponding Secretary	CLAIRE JAMES
Treasurer	BARBARA BOWDEN

MEMBERS

1946

JANE BIGGER
ANN BRADSHAW
GLORIA WALKER

VADIS JETER
NANCY SILER

1947

BETTY McREE BOUTON
NANCY CONN
LEONE FLANIKEN
BETTYE LEE HANCOCK
CLAIRE JAMES
JOYCE SPALDING

MARGRAVE PAUL MELHORN
ANN PRIDGEN
VIVIAN QUARLES
HILMA SEAY
JEAN SHEPHERD

1948

LILY ANNE BEGGS
BARBARA BOWDEN
POLLY McREE BROWN
NENA HILL
KAY HOAG
JO ALLEN JACKSON

BETTY LONG
JOE ALICE PAGE
MARTHA JANE PEOPLES
DONNA ROBINSON
BETTY SHEA
BETTY SMITH

1949

MARILYN ALSTON
ANN AVERY
BETTY CONNALLY
PEGGY HAILE
JO ANN HANCOCK
CAROLYN RIER
BETTY SCHNEIDER

RUTH SHARPE
EVE SKINNER
JANE STEWART
JOY UPSHAW
BETTY ALICE VILLYARD
BETTY WALKER



TREANOR
WIGGINS
WEBB
PARSONS
BELK



ASH
BEAN
BIRDSONG
BURKETT
CLARY



DeMERE
DOWLING
DUDNEY
GERALD
GREEN



HARGRAVES
HARTHCOCK
KING
KING
LANGHAM



LANGMEAD
McCONNELL
McDEARMAN
MAXWELL
NELSON



NICHOLS
NILES
ORGAIN
PHELPS
PHYFER



PITTMAN
REYNOLDS
SPELLINGS
SPELLINGS
WILKINSON



KAPPA DELTA

ALPHA DELTA CHAPTER

Established at Southwestern in 1925

OFFICERS

President	ROBERTA TREANOR
Vice-President	BERNIECE WIGGINS
Secretary	BETTY BYNUM WEBB
Treasurer	PEGGY PARSONS
Editor	BETTY BELK

MEMBERS

1946

ROBERTA TREANOR
BERNIECE WIGGINS
BETTY BELK

LUCY GERALD
BETTY BYNUM WEBB
MARY JANE HARGRAVES

1947

ANN BURKETT
EVELYN DOWLING
PEGGY PARSONS
MARY LANGMEAD
ANN McCONNELL

MARY McDEARMAN
MARTHA PITTMAN
JANE MANN
RUBY ORGAIN

1948

MARGARET AUSTIN
GLORIA COOK
LEONA DeMERE
MARGARET HARTHCOCK
MARGARET KELTON

ELSIE SPELLINGS
MARY LOU NICHOLS
CAROLYN REYNOLDS
MARY NELL WILKINSON

1949

GLORIA ASH
MARY LYNN BEAN
MARTHA BIRDSONG
MURIEL CLARY
NANCY DAVIS
ELIZABETH DUDNEY
MARGARET GREEN
MARY JEAN HANKINS
JANE KING
MARVILENE SCRUGGS

JEAN KING
BETTY LANGHAM
SARAH MAXWELL
BEVERLY MORROW
AMY NELSON
LILLIAN NILES
JANE PHELPS
FLORENCE PHYFER
EMILY RICE
LENORA SPELLINGS



GIBBINS
JOHNSTON
GUICE
RHEA
BACOT
BLACKWELL



BURNETT
CHESTER
COCKRILL
CROSSAN
ELLINGSON
FAUX



FISH
GALLIMORE
HARDWICK
HARRISON
HESSELBEIN
HOGAN



HOWTON
LAGUZZI
LAUGHTER
LEAK
McCALLUM
MAJOR



MARTIN, C
MARTIN, D.
NUNNERY
PARK
ROBINSON
ROPER



ROTHER
SKOUTERIS
STEVENSON
STOKES
SUMRALL
SYMONS



TATE
UTLEY
VACCARO
VARNADO
WRIGHT



ZETA TAU ALPHA

BETA SIGMA CHAPTER

Established at Southwestern in 1929

OFFICERS

President	VIRGINIA GIBBINS
Vice-President	SALLY JOHNSTON
Secretary	FRANCES FISH
Treasurer	MARY LOUISE RHEA
Historian	JUNE GUICE

MEMBERS

1946

VIRGINIA GIBBINS
SALLY JOHNSTON
PAULINE LAGUZZI

JUNE GUICE
ADELAIDE RATTAN

1947

MARY LOUISE RHEA
FRANCES FISH
CATHERINE HARRISON
CAROLYN HESSELBEIN
DOROTHY HOGAN

PEGGY LAUGHTER
SARA GREY McCALLUM
CATHERINE MARTIN
ANNA LOUISE ROTHER

1948

REGINE BACOT
SUE MAE BLACKWELL
BARBARA BURNETT
SARAJANE COCKRILL
BETTY FAUX
PEGGY GALLIMORE
MARGARET HARDWICK
MARILU HOWTON
MARY JANE MAJOR
PATRICIA PARK

NANCY ROBINSON
VOULA SKOUTERIS
KATHERINE STEVENSON
RUTH STOKES
SARA EUGENIA SUMRALL
MAYME TATE
RACHAEL UTLEY
MARY ELLEN VACCARO
NANCY POPE WRIGHT

1949

JULIA CHESTER
JEAN ELLINGSON
MARJORIE LEAK
DIXIE MARTIN

MARGARET NUNNERY
CARMEN ROPER
CAROL SYMONS
JOYCE VARNADO



WADE
SIDES
CRUTCHFIELD
LAY
CHAUNCEY
ALMEDA

ARTAUD
BAILEY
BARTH
BOUTON
BRENT
BROWN

BUFORD
CALDWELL
CARTWRIGHT
CAUSEY
DUNN
ELLIOTT

ESTES
FIELD
FRANK
GIDEON
GRAINGER
GULO

HENRY
HORD
HUGHES
JONES
KILVINGTON
LANGHART

LAWO
LEE
LOVE
LYNCH
McCALL
McCLELLAN

McLEAN
McLENDON
MEADOWS
MORRIS
O'HEARNE
PEOPLES

RANSOM
RITNOUR
ROE
SCOTT, A.
SCOTT, N.
SHELTON

SIMMONS
THORNTON
VICKERS
WEEMS



DELTA DELTA DELTA

DELTA PSI CHAPTER

Established at Southwestern in 1931

OFFICERS

President	VIRGINIA WADE
Vice-President	JANE WILLIAMS SIDES
Recording Secretary	JULIA ANNE CRUTCHFIELD
Corresponding Secretary	BETTY LAY
Treasurer	DOROTHY CHAUNCEY

MEMBERS

1946

MARY LOU ALMEDA	MARTHA JO GULO
SARAH W. BARTH	JEANETTE HORD
WARRENE BUFORD	JEAN LAWO
DOROTHY CHAUNCEY	BETTY LAY
JULIA ANNE CRUTCHFIELD	NANCY HUGHES
GARNET FIELD	VIRGINIA WADE

1947

BETTY BOUTON	KATHRYN LYNCH
HARRIET CAUSEY	CAROL MORRIS
SARA ANNE ELLIOTT	SUZANNE RANSOM
NORMA ESTES	ALICE SCOTT
LOUISE FRANK	NANCY SCOTT
MARY GIDEON	JANE WILLIAMS SIDES
JEAN LANGHART	STELLA JONES
ALICE LEE	

1948

AMELIA BRENT	JEANNE O'HEARNE
HAZEL BROWN	VIRGINIA PEOPLES
VIRGINIA CARTWRIGHT	ELISE RITNOUR
JANE KILVINGTON	MARY SUE ROE
ANNE LOVE	NORMA SHELTON
ESTELLE McCLEAN	BETTYE JUNE SIMMONS
JOANNA McCLELLAN	

1949

PATRICIA ARTAUD	REBECCA McCALL
ELLA BAILEY	ELIZABETH McLENDON
PATRICIA CALDWELL	BETTY THORNTON
MIGNON DUNN	MARJORY VICKERS
MARY NELL GRAINGER	BETTY WEEMS
SUE HENRY	



Established at Southwestern in 1945
GAMMA DELTA



FAIRLEIGH
 McCALL
 CLARK
 CULLINGS

CARNEY
 GARRAWAY
 GUENTHER
 KILGORE

McALEXANDER
 REDDITT
 ROOK
 THOMSON

OFFICERS

President ELIZABETH ANN FAIRLEIGH
 Vice-President PEGGY McCALL
 Secretary CARY NEAL CLARK
 Treasurer BETTY JEAN CULLINGS

1949

MARJORIE CARNEY
 CARY NEAL CLARK
 BETTY JEAN CULLINGS
 ELIZABETH ANN FAIRLEIGH

ORA LEE GARRAWAY
 DALE GUENTHER
 BETTY KILGORE
 PEGGY McALEXANDER

PEGGY McCALL
 LILLIAN REDDITT
 SARA LOUISE ROOK
 SALLY THOMSON

INDEPENDENT WOMEN



deGRAFFENREID
BRANTLEY
BOONE
ALBRIGHT
COGSWELL

EDMONDSON
HENDERSON
KELLEY
MORGAN
MORRIS

ROBINSON
WHITAKER
WILLIAMS
WONG, H.
WONG, K.

OFFICERS

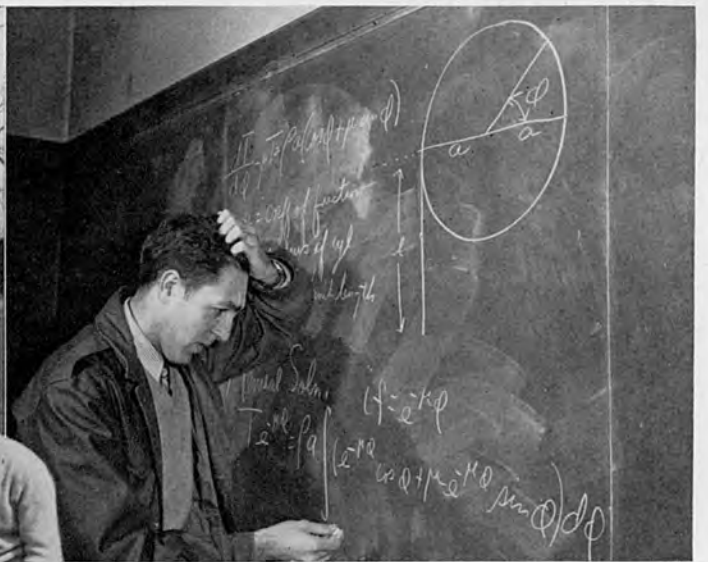
President JEANNE deGRAFFENREID
 Vice-President BETTY JO BRANTLEY
 Secretary-Treasurer JOAN COGSWELL

MEMBERS

	1946	
MABEL BOONE		DEE EDMONDSON
HELEN WILLIAMS		
	1947	
JEANNE deGRAFFENREID		MARY VIRGINIA MORRIS
VIRGINIA MORGAN		SUE ROBINSON
	1948	
BETTY JO BRANTLEY		JOAN COGSWELL
MARY EMMA KELLEY		HELEN WONG
KATIE WONG		
	1949	
JEAN ALBRIGHT		HAZEL HENDERSON
ERNESTINE WHITAKER		









THE *Lynx* PRINTED AND BOUND BY

STANDARD
PRINTING
& SUPPLY
COMPANY

Where Fine Printing is produced by
modern, up-to-date equipment, combined
with the skill of competent workmen.

307-309 MADISON AVENUE
MEMPHIS, TENNESSEE



ARTISTS • PHOTOGRAPHERS • ENGRAVERS
BLUFF CITY ENGRAVING CO. INC
120 MADISON AVE. • MEMPHIS, TENN.

All Portraits

IN THIS PUBLICATION

BY

CHAS. N. TIGRETT STUDIO

1503 UNION AVE.



TOWERS BLDG.

Phone 36-6405



If No Answer Call 36-1944

AIR CONDITIONING

Specializing in

WEDDINGS

and

PORTRAITS

Choice of Discriminating Southerners Since 1864

Engraved Calling Cards

- Thank-You Notes
- Invitations and Announcements
- Personalized Fine Writing Papers
- Personalized Napkins For Graduates' Parties

***Also Greeting Cards
For All Occasions***

Social Stationery Section

TOOF

S. C. Toof & Co., 195 Madison

PRINTERS • LITHOGRAPHERS • STATIONERS • OFFICE OUTFITTERS



W. J. Britton & Company

COTTON

CABLE ADDRESS "BRITAIN"

48 S. FRONT ST.

MEMPHIS, TENN., U.S.A.

Compliments of

GUARANTY MORTGAGE & TRUST CO.

Mortgage Loans

and

METCALF BROS.

GUARANTY INSURANCE AGENCY

Fire and Casualty Insurance

Best of Luck To The

CLASS OF 1946

A Friend



Fargason Cotton Co.

SPOT COTTON

Memphis, Tenn.

Compliments

WILBOURN BROS.

★

COTTON

Compliments of

E. H. Sanders Cotton Co.

Memphis, Tenn.

Balfour Fraternity Jewelry

"THE OLD RELIABLE"

Send All Orders To

L. G. BALFOUR

2104 5th Ave., North

Birmingham, Ala.

James D. Collier & Co.

INSURANCE

503-04 First National Bank Bldg.

8-5831—Phones—8-5832

Memphis 1, Tennessee

JAS. D. COLLIER

JAS. D. COLLIER JR.



F. M. CRUMP & CO.

COTTON

60 S. FRONT ST.

MEMPHIS, TENN.

Compliments

of

KYLE & CO.

CAFFEY ROBERTSON

EXPORTS—MERCHANTS—DOMESTIC

Memphis 3, Tenn.—U.S.A.

Aren't You GLAD You Went to
SOUTHWESTERN?

GEO. T. ROY, INC.

JEWELER

Geo. T. Roy
44 So. Main St.

Martin P. Hood
Phone 8-3869

Paul's Shoe Store

101 So. Main.

SHOES — BAGS — HOSIERY

Compliments of

Allenburg Cotton Co.

Memphis, Tenn.

Compliments

of

BARNWELL & HAYS



Compliments of

**T. J. WHITE &
COMPANY**

★

COTTON

Compliments of

Dalrymple Cotton Co.

Spot-Cotton Brokers

Memphis, Tenn.

B. E. Boothe & Company

Cotton Merchants

Memphis, Tenn.

Compliments

ANDERSON, CLAYTON & CO.

COTTON MERCHANTS

HEADQUARTERS FOR SCHOOL PINS, RINGS, FRATERNITY JEWELRY

The Gift Center of the South

The Brodnax name on the
box adds much to the value
but nothing to the cost . . .

GEO. T. **BRODNAX**, INC.

Jewelers • Main at Monroe • MEMPHIS

Drink

Coca-Cola

in Bottles

Compliments of

D. Canale and Co.

Jake H. Scharff

INSURANCE

149 Monroe Ave.



JOE WEISS

J. H. COZART

Weiss Cotton Co.

Memphis, Tenn.

SELLERS OF ALL GRADES AND STAPLES

Lee Wilson—McSpadden & Co.

COTTON

49 Union Avenue

Memphis, Tenn.

H. L. Guion Co.

Real Estate - Insurance

FOR 76 YEARS

Compliments of
Ted I. Lewis

COTTON

112 S. Front St.

Memphis, Tenn.



The Photographic Center of the South

Lewis
MEMPHIS

Cameras • Enlargers
Radios • Servicing
Accessories
and
Supplies

*Always the finest in portraiture—
Now the finest in supplies*

CALL ORKIN TODAY

There is no need to tolerate unsanitary conditions in the home. Orkin will quickly rid your home of insect pests and vermin.



Call 8-7311

No Charge for Inspections and Estimations