



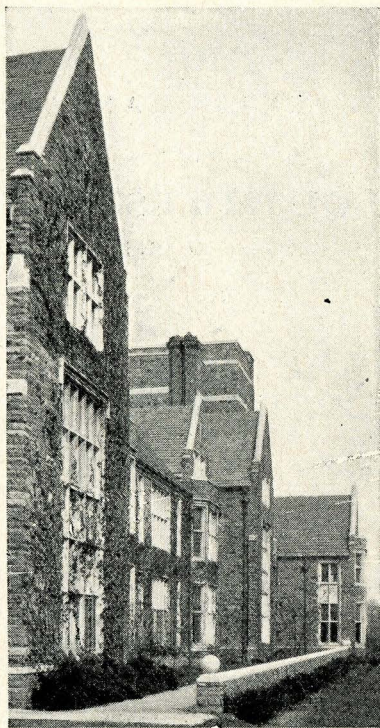
UNIVERSITY OF
SOUTHWESTERN
LIBRARY

SOUTHWESTERN
— LIBRARY —
Memphis, Tenn.

The
STUDENTS' HANDBOOK
of
SOUTHWESTERN
The College of the Mississippi Valley



Published by
THE SOUTHWESTERN
CHRISTIAN UNION



DEDICATION

To you, who for the first time are about to enter the gates of college life, you who will become our associates and friends, and upon whose shoulders will ultimately fall the responsibility of carrying on the work and traditions of SOUTHWESTERN, the SOUTHWESTERN Christian Union dedicates this Handbook for the session of 1936-37.

SOUTHWESTERN'S
"ALMA MATER"

Dear Alma Mater, kind the fate
That links our lives with Thee,
For God's own power that made Thee great
Is the truth that makes us free;
Thy torch has touched our hearts with flame,
Our yearning souls refined;
Through Thee we learn the higher aim,
And train the truer mind.

Thy stalwart towers of solid stone,
Thy vaulted arches strong,
Inspire our loyal hearts each one
To fight against the wrong;
Our lives reflect the beauty of
Thy stately cloister'd halls,
And characters grow genuine
That dwell within Thy walls.

O Leader to the larger light,
SOUTHWESTERN, 'neath Thy wings
Thy sons in rev'rent love unite,
And each his tribute brings;
And dreams such dreams as old men dream,
And visions young men see,
Keep lighted in our hearts the flame
Once kindled there of Thee.

To the Class of 1940:



On behalf of the college, as well as on my own account, we cordially welcome you to SOUTHWESTERN, to share in our privileges and responsibilities. You have come from many homes and from many schools. With different backgrounds, with varying abilities, and with unequal, but, we hope, adequate preparation, you are united in your choice of a college, which is one of life's important choices. We have reason to believe that you are of sound moral character, and we trust that you are motivated by a serious purpose. If these things are true, and if you will put yourself wholeheartedly into your work, we believe that the long future will vindicate the wisdom of your choice. There is much that you can gain and much that you can give, but everything depends upon your own point of view and attitude and spirit of cooperation.

Phax & Rich.

To the Class of 1940:



Southwestern welcomes you to its campus and to what we of the faculty hope may be the beginning of a friendship and love for the institution that will endure through the years to come. All of the facilities of Southwestern, its grounds, its

buildings, its library, and its athletic fields are here for your benefit and are at your disposal. The wonderful experience and privilege of a college education are to be yours. We trust that you come to us ready to take advantage of all that the college has to offer and of all the help that we are eager to give you. We want you to learn much, to play intelligently, to make many loyal friends, and to be happy here. But above all, we want you to become finer and better men and women than you were when you came to us. To these ends we are prepared to assist you, and we ask your cooperation.

R. S. Struckler

UNUSUAL ADVANTAGES OF SOUTHWESTERN

1. TYPE OF INSTITUTION—A small college with the highest moral and intellectual standards.
2. EDUCATIONAL IDEALS—"To function as an ideal college where knowledge shall be exact and complete, character robust and gracious, and Christianity not only a welcome guest, but the ruling spirit within its walls."
3. THE FACULTY—A rare group of Christian scholars who are exceptionally fine teachers, and who are deeply interested in the welfare of each student—See page 16.
4. THE HONOR SYSTEM—See page 52.
5. FACULTY-ADVISER SYSTEM—Each freshman assigned an adviser upon entrance to SOUTHWESTERN.
6. HONORS COURSES—See page 45.
7. ADMISSION TO JUNIOR CLASS—Only students who have done academic work of high quality during the first two years of college may be admitted to the junior class.
8. THE LIBRARY—See page 28.
9. TUTORIAL COURSES—See page 43.

COLLEGE CALENDAR

SESSION 1936-1937

FIRST SEMESTER

September 12, Saturday, 10 a.m.—Meeting of the Faculty.

September 14-15, Monday and Tuesday—*Examinations.

September 16-17, Wednesday and Thursday—Freshman Orientation.

September 18, Friday—General Registration.

September 19, Saturday, 8:30 a.m.—Opening Convocation and Assembly of All Classes.

October 12-13, Monday and Tuesday—Re-examinations.

November 11, Wednesday—Armistice Day Service.

November 26, Thursday—Thanksgiving, a Holiday.

December 18, Friday, 5:00 p.m.—Beginning of Christmas Recess.

January 2, Saturday, 8:30 a.m.—End of Christmas Recess.

January 25 to January 29—Semester Examinations.

*These examinations are for those new students whose entrance credits are irregular, and for former students who are subject to reexamination.

New students without any exception should be present in Hardie Auditorium at 8:30 a.m. on Wednesday, September 16.

All students are expected in Hardie Auditorium at 8:30 a.m. on Saturday, September 19.

1936 JULY 1936						
SUN	MON	TUE	WED	THU	FRI	SAT
		1	2	3	4	
5	6	7	8	9	10	11
12	13	14	15	16	17	18
19	20	21	22	23	24	25
26	27	28	29	30	31	

1937 JANUARY 1937						
SUN	MON	TUE	WED	THU	FRI	SAT
			1	2		
3	4	5	6	7	8	9
10	11	12	13	14	15	16
17	18	19	20	21	22	23
24	25	26	27	28	29	30

1937 JULY 1937						
SUN	MON	TUE	WED	THU	FRI	SAT
			1	2		
4	5	6	7	8	9	10
11	12	13	14	15	16	17
18	19	20	21	22	23	24
25	26	27	28	29	30	31

1936 AUGUST 1936						
SUN	MON	TUE	WED	THU	FRI	SAT
						1
2	3	4	5	6	7	8
9	10	11	12	13	14	15
16	17	18	19	20	21	22
23	24	25	26	27	28	29

1937 FEBRUARY 1937						
SUN	MON	TUE	WED	THU	FRI	SAT
	1	2	3	4	5	6
7	8	9	10	11	12	13
14	15	16	17	18	19	20
21	22	23	24	25	26	27
28						

1937 AUGUST 1937						
SUN	MON	TUE	WED	THU	FRI	SAT
	1	2	3	4	5	6
7	8	9	10	11	12	13
14	15	16	17	18	19	20
21	22	23	24	25	26	27
28	29	30	31			

1936 SEPTEMBER 1936						
SUN	MON	TUE	WED	THU	FRI	SAT
		1	2	3	4	5
6	7	8	9	10	11	12
13	14	15	16	17	18	19
20	21	22	23	24	25	26
27	28	29	30			

1937 MARCH 1937						
SUN	MON	TUE	WED	THU	FRI	SAT
	1	2	3	4	5	6
7	8	9	10	11	12	13
14	15	16	17	18	19	20
21	22	23	24	25	26	27
28	29	30	31			

1937 SEPTEMBER 1937						
SUN	MON	TUE	WED	THU	FRI	SAT
		1	2	3	4	
5	6	7	8	9	10	11
12	13	14	15	16	17	18
19	20	21	22	23	24	25
26	27	28	29	30		

1936 OCTOBER 1936						
SUN	MON	TUE	WED	THU	FRI	SAT
		1	2	3		
4	5	6	7	8	9	10
11	12	13	14	15	16	17
18	19	20	21	22	23	24
25	26	27	28	29	30	31

1937 APRIL 1937						
SUN	MON	TUE	WED	THU	FRI	SAT
			1	2	3	
4	5	6	7	8	9	10
11	12	13	14	15	16	17
18	19	20	21	22	23	24
25	26	27	28	29	30	

1937 OCTOBER 1937						
SUN	MON	TUE	WED	THU	FRI	SAT
						1
2	3	4	5	6	7	8
9	10	11	12	13	14	15
16	17	18	19	20	21	22
23	24	25	26	27	28	29

1936 NOVEMBER 1936						
SUN	MON	TUE	WED	THU	FRI	SAT
	1	2	3	4	5	6
7	8	9	10	11	12	13
14	15	16	17	18	19	20
21	22	23	24	25	26	27
28	29	30				

1937 MAY 1937						
SUN	MON	TUE	WED	THU	FRI	SAT
						1
2	3	4	5	6	7	8
9	10	11	12	13	14	15
16	17	18	19	20	21	22
23	24	25	26	27	28	29

1937 NOVEMBER 1937						
SUN	MON	TUE	WED	THU	FRI	SAT
	1	2	3	4	5	6
7	8	9	10	11	12	13
14	15	16	17	18	19	20
21	22	23	24	25	26	27
28	29	30				

1936 DECEMBER 1936						
SUN	MON	TUE	WED	THU	FRI	SAT
		1	2	3	4	5
6	7	8	9	10	11	12
13	14	15	16	17	18	19
20	21	22	23	24	25	26
27	28	29	30	31		

1937 JUNE 1937						
SUN	MON	TUE	WED	THU	FRI	SAT
		1	2	3	4	5
6	7	8	9	10	11	12
13	14	15	16	17	18	19
20	21	22	23	24	25	26
27	28	29	30			

1937 DECEMBER 1937						
SUN	MON	TUE	WED	THU	FRI	SAT
						1
2	3	4	5	6	7	8
9	10	11	12	13	14	15
16	17	18	19	20	21	22
23	24	25	26	27	28	29

SECOND SEMESTER

January 30, Saturday—Inter-semester Holiday.

February 1, Monday—Registration.

February 2, Tuesday, 8:30 a.m.—Chapel and Classes Resumed.

February 2-6—Week of Prayer.

February 28, Sunday—Day of Prayer for Colleges.

March 15-16, Monday and Tuesday—Re-examinations.

March 24, Wednesday, 5:00 p.m.—Beginning of Easter Holidays.

March 30, Tuesday, 8:30 a.m.—End of Easter Holidays.

May, 31 to June 5—Semester Examinations.

June 6, Sunday, 11:00 a.m.—Baccalaureate Sermon.

June 7, Monday — Class Day Exercises, Alumni Day, Alumni Dinner.

June 8, Tuesday, 10:00 a.m.—Graduation Ceremony.

June 14 to July 24—Summer School of 1937.

There is a destiny that makes us brothers;

None goes his way alone;

All that we send into the life of others

Comes back into our own.

Edwin Markham.

SOUTHWESTERN TRADITIONS

SOUTHWESTERN is preeminently an institution of Christian ideals, and the spirit of honesty and friendliness is ever present in the classroom, on the athletic field, and in all branches of college activities. In order that these ideals may be maintained, SOUTHWESTERN selects only those students who are of a high moral and intellectual type.

There is an unusually warm understanding between the students and the professors. The classes are small, and individual attention to the students is thereby made possible. The members of the faculty are looked upon as friends and advisers of the intimate type, and the benefits thereby reaped are out of all proportion to anything attained in larger institutions.

All students are regarded and treated as gentlemen, unless and until they prove themselves otherwise. The motto of Winchester College is "Manners Makyth Man." The importance of good manners, the art of putting our associates at their ease, cannot be exaggerated. This virtue is within reach of all, for in essence it depends upon kindness of disposition and not on a book of etiquette.

Not only does SOUTHWESTERN require that the students uphold the Christian ideal, but that they put themselves heartily into their work. These two requirements are fundamental, and must be met by all students.

The spirit of honesty pervades SOUTHWESTERN in all its activities, and so general has been this attitude among the students that the Honor System has come to be an essential aspect of the institution's life.

The spirit of democracy is deeply ingrained in the fabric of the institution. Snobbishness of any form is out of place.

Freshmen are expected to identify themselves with all activities of the college and to enter whole-heartedly into the spirit of the institution. The custom of hazing died out at SOUTHWESTERN long ago. It has been found that the austere appearance of the upperclassmen is sufficient to inspire awe in the incoming freshmen each year. There is always a feeling of respect and confidence shown by the students to the upperclassmen.

Students are proud of the buildings, which are unsurpassed by any, and they show their pride by endeavoring at all times to preserve and protect the college property, just as they do their own homes.

Squandering of time is strongly discounted, and all students are earnestly advised to use their time in the manner which will be most helpful for intellectual, athletic, social and moral development.

Those who enter into the spirit of SOUTHWESTERN and uphold the traditions will have a happy experience. Those students will speedily become a part of the institution, and find themselves in harmony with the high purposes which lie behind all our activities.

EDUCATIONAL IDEALS

The following extract from the Minutes of the Board of Directors, which reveals the educational ideals—ideals heartily and unanimously approved by the Board of Directors at their meeting on February 8, 1922, and reaffirmed by the Board at the annual meeting on February 4, 1931—will make clear the policy of the institution.

President Diehl addressed the Board, pointing out the necessity of having definite educational ideals and of a continuity in the directorate for the carrying out of adopted plans. Assuming that there could be no disagreement in this Board concerning the spiritual ideals of the institution, he outlined for the consideration and disposition by the Board a definite program of educational ideals, which is as follows:

"While every proper economy will be observed in the planning for and the administration of SOUTHWESTERN, the fundamental principle upon which all our planning shall proceed is the welfare and especially the moral welfare of the students, for whom the institution exists, even though the application of this principle prove to be more costly in dollars and cents.

"Inasmuch as the English system of higher education is, in our judgment, incomparably better for the moral welfare of the student than the Continental system, we propose as nearly as we can to follow the English system, with such modification and the adaptations as seem wise.

"We believe that from 150 to 200 students is about the maximum number that should be grouped together as a unit, that such a group is about the ideal size for the helpful development of a common life, and, we believe, further, that this number should be broken up into small groups for more intimate fellowship.

"We favor, therefore, a dormitory arrangement providing for a unit quadrangle for 175 men, with a common dining room for this group.

"We favor, also, the plan of dividing this quadrangle into five separate groups or halls, each to provide for 34 men and an instructor, and each of these five halls to have separate living room equipped for each group of 34 students, thus preserving the family idea.

"We, therefore, favor the policy of having fraternity houses which shall be merely club houses, and not dormitories or residential houses.

"We believe that we can best serve the church and the nation by adequately providing for and equipping a comparatively few select men, in accordance with our means, rather than by accepting all who desire to come, and then doing the best we can for them with the limited means at our disposal.

"We, therefore, favor the policy of selecting carefully all students, this selection to be made on the basis of moral character, intellectual fitness and preparation, qualities of leadership and potentialities of usefulness to church and state; and to limit the number of students accepted by our ability to give them

the best advantages, such advantages as they have a right to expect from the standard college of a Church which enthrones honesty and which worships the God of righteousness.

"We believe that there should be, in order to give students the best advantages, an income producing endowment of about \$5,000 per student, and it will be our policy to endeavor to measure our student capacity by the income producing endowment. As our endowment increases and we can provide properly for others, we shall accept more students, all of whom, however, are to be carefully selected.

"We believe, further, that it is for the best interests of the work to have a comparatively small faculty of well-paid full professors rather than to have a larger faculty composed mainly of assistant professors and instructors who are serving on a lower salary scale."

Let every man be occupied, and occupied in the highest employment of which his nature is capable, and die with the consciousness that he has done his best.

Sidney Smith—Memoir.

The heights by great men reached and kept
Were not attained by sudden flight,
But they while their companions slept
Were toiling upward in the night.

Longfellow—

The Ladder of Saint Augustine.

FACULTY

(Arranged in Order of Appointment)

Charles Edward Diehl, A.M., D.D., LL.D.

A.B., Johns Hopkins University; Graduate of Princeton Theological Seminary; A.M., Princeton University.

President

Charles Louis Townsend, A.M., Ph.D.

B.A., McGill University; A. M. and Ph.D., Harvard University.

Professor of Modern Languages

Margaret Huxtable Townsend, M.A.

B.A. and MA., McGill University.

Associate Professor of Sociology

Waller Raymond Cooper, A.M., LL.B.

A.B., Washington and Lee University; A.M., Harvard University; LL.B., University of Alabama; B.A. [Juris], Oxford University.

Professor of History

William R. Atkinson, A.M., Ph.D.

B.S., George Peabody College; A.M., Columbia University; Ph.D., George Peabody College.

Professor of Psychology and Education

Marion Leigh MacQueen, A.M., Ph.D.

A.B., SOUTHWESTERN; A.M., University of Wisconsin; Ph.D., University of Chicago.

Professor of Mathematics

Samuel Holt Monk, A.M., Ph.D.

A.B., SOUTHWESTERN; A.M. and Ph.D., Princeton University.

Professor of English

Robert P. Strickler, Ph.D.

A.B., West Virginia University; 1907-10, Oxford University; Ph.D., Johns Hopkins University.

Professor of Greek

William Orpheus Shewmaker, Ph.D., D.D.

A.B., Centre College; Graduate of Princeton Theological Seminary; Ph.D., Hartford Theological Seminary.

Professor of Bible

Robert W. Hartley, Ph.D.

A.B., University of Utah; B.A. [Mathematics], Oxford University; Ph.D., University of Pennsylvania.

Professor of Mathematics

Martin W. Storn, A.M., Ph.D.

A.B., Wartburg College; A.M., University of Washington; Ph.D., University of Illinois.

Professor of Romance Languages

Alexander P. Kelso, B.D., M.A., D.D.

A.B., Washington and Jefferson College; B.D., Western Theological Seminary; B.Sc. [Ethics] and M.A. [Theology], Oxford University.

Professor of Philosophy and Christian Ethics

John H. Davis, M.A., Ph.D.

A.B., University of Kentucky; B.A. [Modern History] and M.A., Oxford University; Ph.D., University of Chicago.

Associate Professor of History

Peyton Nalle Rhodes, A.M., Ph.D.
A.B., A.M., and Ph.D., University of Virginia.

Professor of Physics

A. Theodore Johnson, A.M., Ph.D.
A.B., Westminster College; A.M., University of Virginia; Ph.D., University of North Carolina.

Professor of English

Henry J. Bassett, Ph.D.
A.B., Maryville College; A.B., Princeton University; Ph.D., University of Michigan.

Professor of Latin

Robert S. Pond, A.M., Ph.D.
A.B., Washburn College; A.M., Marietta College; Ph.D., University of Kansas.

Associate Professor of Mathematics

Ardrey S. McIlwaine, A.M., Ph.D.
A.B., SOUTHWESTERN; A.M. and Ph.D., University of Chicago.

Associate Professor of English

Ralph C. Hon, A.M., Ph.D.
A.B., University of Illinois; A.M., Harvard University; Ph.D., University of North Carolina.

Professor of Economics and Business Administration

Clinton L. Baker, M.S., Ph.D.
B.S. and M.S., Emory University; Ph.D., Columbia University.

Associate Professor of Biology

Charles Gordon Siefkin, B.A.
A.B., University of Iowa; B.A., Oxford University.

Assistant Professor of Political Science

Felix Bayard Gear, B.D., Th.M.
A.B., Davis and Elkins College; B.D., Union Theological Seminary; Th.M., Princeton Theological Seminary.

*Associate Professor of Bible
The Albert Bruce Curry Chair*

Jacob R. Meadow, A.M., Ph.D.
A.B., Arkansas College; A.M., University of Arkansas; Ph.D., Johns Hopkins University.

Professor of Chemistry

J. Henry Davis, A.M., Ph.D.
B.S. and A.M., Davidson College; Ph.D., University of Chicago.

Professor of Biology

J. Marshall Linton, A.M.
A.B., Lafayette College; A.M., Princeton University.

Assistant Professor of English

Ogden Baine, M.S., Ph.D.
B.S., SOUTHWESTERN; M.S. and Ph.D., New York University.

Assistant Professor of Chemistry

Burnet C. Tuthill, A.M., M.Mus.
A.B. and A.M., Columbia University; M.Mus., College of Music of Cincinnati.

Director of Music

Clarence Pendleton Lee, A.M.
A.B. and A.M., Washington and Lee University;
B.A., Oxford University.

*Assistant Professor of Public Speaking and
Director of Dramatics*

F. E. C. Caspari, B.Litt.
University of Heidelberg, 3 years; B.Litt.,
Oxford University.

Assistant Professor of Modern Languages

W. Ross Junkin, A.M., Ph.D.
A.B., University of Toronto; A.M. and Ph.D.,
Cornell University.

Associate Professor of Economics and Business Administration

David M. Amacker, M.A.
A.B., Princeton University; B.A. and M.A.,
Oxford University.

Professor of Political Science

Marion E. Porter, A.M., Ph.D.
A.B., Washington and Lee University; A.M.,
Princeton University; Ph.D., Princeton University.

Assistant Professor of Modern Languages

R. Clyde Propst
University of Alabama.
Director of Athletics

Harold W. High, A.B.
A.B., Southwestern.
Graduate Manager of Athletics

Paul Hug, B.S.
B.S., University of Tennessee.
Director of Physical Education for Men

Louise Stratmann, A.B.
A.B., SOUTHWESTERN.
Director of Physical Education for Women

OFFICERS OF ADMINISTRATION AND ASSISTANTS

Charles Edward Diehl, A.M., LL.D. *President*

A. Theodore Johnson, Ph.D. *Dean*

W. Raymond Cooper, A.M., LL.B.
. *Dean of Men*

Margaret Huxtable Townsend, M.A.
. *Dean of Women*

Robert P. Strickler, Ph.D. . . *Dean of Freshmen*

Annie Beth Gary, A.M.
. *Clerk of the Faculty and Registrar*

Mrs. James J. Challen, A.B.
. *Associate Registrar*

C. L. Springfield. *Bursar*

Mary Marsh, A.B.L.S. *Librarian*

Elizabeth B. Fisher, B.S. in L.S.
. *Assistant Librarian*

Erma Reese *Secretary to the President*

John A. Rollow, B.S.
. *Supt. of Buildings and Grounds*

S. E. Howie, B.A.
*Director of Public Relations and Alumni
Secretary*

Moore Moore, M.D.	<i>College Physician</i>
John R. Drake, M.D.	<i>Associate College Physician</i>
Mrs. M. L. Hill	<i>House Manager</i>
Mrs. I. A. Rutland	<i>Resident Head of Evergreen Hall</i>
Mrs. Ruth M. Holloway	<i>Manager of the Book Store</i>
Warren D. Howell	<i>Bookkeeper</i>
Ireys Martin	<i>Cashier</i>
Mrs. A. M. Bright	<i>Assistant to the Bursar</i>
Mrs. Patton Fentress	<i>Secretary to the Dean</i>

WHAT TO DO BEFORE COMING TO SOUTHWESTERN

1. Deposit registration fee of \$10.00, and, if you are an out-of-town student, deposit a room reservation fee of \$10.00, and you will be assigned a room in one of the dormitories.

2. Be sure you have your high school principal send your certificate of entrance units to the Registrar. If you have attended another college, have that institution transfer your credits. Failure to do this will delay your matriculation.

3. Bring enough money to settle with the Bursar. (See pages 33, 34, 35, and 36 of the catalogue.) You may deposit the money in your home bank and draw a draft on it, instead of bringing the money with you.

Example is the school of mankind, and they will learn at no other.

Burke—On a Regicide Peace.

We do not count a man's years until he has nothing else to count.

Emerson—Old Age.

It matters not how a man dies, but how he lives.

The Life of Johnson (Boswell).

SUGGESTIONS TO FRESHMEN

Be friendly, speak to everybody, whether you know the person or not.

Try to learn every student's name.

Learn the college yells and songs.

Systematize your daily program.

Pay your debts promptly.

Lend little money and borrow less.

Be a booster, not a kicker.

Don't spend too much time uptown.

Dress neatly at all times.

Identify yourself at once with the religious life of the college.

Scrupulously set apart Sunday as a day of rest and worship.

Write home often.

Remember you have a mother who cares.

One is not judged at SOUTHWESTERN by what he did in high school, but by what he does at SOUTHWESTERN.

All students here are expected to enter into the campus activities whole-heartedly, and to cooperate with the faculty and student body in the effort to make our college hold its place as the best in the South.

GENERAL INFORMATION

At the Union and Grand Central Stations there will be information booths furnished by the SOUTHWESTERN Christian Union for the service of the new students. They should report there after reaching the city and further information will be supplied by those in charge.

Any one desiring to reach the College by street car from either of the principal railway stations, may take any car going north, transfer later to street car number 16, and ride to the end of the line. The usual taxicab fare from the railroad stations to the College is about \$1.25. Since no additional charge is made for extra passengers, as many as five students may ride out together for this one fare.

The taxicab companies, as well as the Patterson Transfer Company, are equipped for delivering trunks to the College, and trunk checks entrusted to them will receive prompt and careful attention. The rates of the Yellow Cab Company, the Jolly Cab Company, and the Patterson Transfer Company are 75 cents per trunk and 25 cents for each additional piece of baggage.

Those men students who arrive at the College between 8:30 a.m. and 5 p.m. should see Dr. Robert P. Strickler in Room 209 Palmer Hall, for the assignment of a room. Mr. John A. Rollow, Superintendent of Buildings and Grounds, will furnish keys for the room. A deposit of 50 cents is required for each key.

Those students who arrive before 8:30 a.m. or after 5 p.m. should go directly to Mr. Rollow's office in the Science Building where they will be assigned to a room.

The women students should go to Evergreen Hall which is located on the corner of Snowden Avenue and University Place. Mrs. I. A. Rutland, the Resident Head of Evergreen Hall, will assign the rooms.

The College office in Palmer Hall will be glad to furnish any further information the student may desire.

THE FIRST FEW DAYS AT SOUTHWESTERN

The first two days of the session, prior to the Opening Convocation, are set aside for the purpose of inducting the freshmen and other new students into college life in such a way that a better adjustment may result. Below is given a brief outline of the Orientation Program for September, 1936.

WEDNESDAY, SEPTEMBER 16, 1936

- 8:30 a.m.—Opening Exercises in Hardie Auditorium.
- 10:00 a.m.—Classification Tests and Measurements in Hardie Auditorium.
- 1:00 p.m.—Luncheon—All new students are guests of the College.
- 2:00 p.m.—Conferences, Registration, Physical Examinations, and Photographs.

THURSDAY, SEPTEMBER 17, 1936

- 8:30 a.m.—Devotional Exercises in Hardie Auditorium.

10:00 a.m.—Classification of Women Students.

1:00 p.m.—Luncheon—Those new students who care to come will be guests of the college.

2:00 p.m.—Classification of Men Students.

FRIDAY, SEPTEMBER 18, 1936

9:00 a.m.—4:00 p.m.—General Registration.

8:00 p.m.—Palmer Hall Terrace—President's reception.

SATURDAY, SEPTEMBER 19, 1936

8:30 a.m.—Hardie Auditorium — Opening Convocation; Assembly of all classes.

LOCATION

The campus of SOUTHWESTERN is a beautiful tract of one hundred acres, fronting for half a mile along North Parkway, just opposite Overton Park. It is located in northeast Memphis, just inside the city limits.

BUILDINGS

Palmer Hall is the administration building, in which the college offices are located. It contains also eighteen classrooms and Hardie Auditorium, which is located on the second floor. The library occupies the third floor. The science building contains the most modern and complete equipment to be found anywhere in the South.

Neely Hall, which is the dining hall, is under the capable direction of Mrs. M. L. Hill.

There is a Field House which contains a basketball court and gymnasium. It is open

at all times during the day for the use both of the gymnasium classes and the individual students.

DORMITORIES

There are two dormitories, Robb and Calvin Halls, located on the campus. Stewart and Evergreen Halls are just across from the campus, on University Place.

LIBRARY

The college library is, on the third floor of Palmer Hall. It contains more than 36,000 volumes in addition to unbound pamphlets and magazines, and provides excellent material for parallel reading and other supplementary work which form an integral and necessary part of the various courses in every department of instruction.

A recent gift of ten thousand dollars from the Carnegie Corporation and one of three thousand dollars from the General Education Board, both grants being used for the purchase of books, greatly aided in enriching the library.

Students are required to maintain quiet in the library at all times.

In order to make the widest possible use of the library for the entire student body and faculty, it is necessary to have and to enforce certain regulations. Every student is expected to familiarize himself with the rules governing the library, a copy of which he will find posted at the entrance to the reading room.

POST OFFICE, BOOK AND SUPPLY STORE

The combined post office, book and supply store is located in the basement of Hugh M. Neely Hall and is under the management of Mrs. Ruth Holloway. Text-books, classroom supplies and all needs of students are supplied in the store.

MAIL

All mail should be addressed to Memphis, Tennessee, in care of SOUTHWESTERN. Deliveries are made regularly twice a day to the college post office, the letters then being posted in the various boxes of the students. Each student is required to rent a box. Rental charges are fifty cents a year.

BULLETIN BOARDS

Notices will be posted by professors and others on the official bulletin board at the entrance to Hardie Auditorium. Students are held responsible for a knowledge of all announcements placed on this bulletin board. There is another bulletin board between the west entrance of Palmer Hall and the south entrance of Science Hall where the student announcements may be placed. Keys to this bulletin board are kept in the Business Office.

LAUNDRY AND PRESSING

Students representing various laundries and pressing clubs take care of all needs along this line. Suits can be pressed for twenty-five cents, and liberal rates can be secured on the laundry.

GRADING SYSTEM

The grades at SOUTHWESTERN are A, B, C, D, X, E and F. A is exceptionally good, B is good, C is average, D is barely passing, and F means failure. X means incomplete work. E means that another examination may be taken. If a student fails in more than half of his courses the first report period, he is put on probation, and unless he redeems himself the next report period, he is asked not to come back to SOUTHWESTERN after Christmas.

SPECIAL STUDENTS

Special students are not eligible for extracurricular activities, including fraternities. In the annual register of students, each special student is indicated as such, and not as a candidate for a degree. (See catalogue, page 29.)

Self-reverence, self-knowledge, self-control,—
These three alone lead life to sovereign
power.

Tennyson—Oenone.

COLLEGE REGULATIONS

For the information of new students, the following regulations of the catalogue have been brought together into one place for convenience of reference:

ATTENDANCE

1. Every student is expected to be present at the opening exercises in September, to be faithful in the performance of college duties, and to attend church service every Sunday morning. Prompt return after holidays is absolutely essential. Regular chapel and class attendance, including attendance upon physical education classes, is obligatory.

2. Students living in the college dormitories must obtain permission in advance from the Dean for all absences which necessitate missing any college duties, except when representing the college in some regularly scheduled event, such as athletics, debating, or other activity. Having secured permission, they should notify each of their instructors from whose classes they expect to be absent, and make such arrangements as are necessary for making up the work to be missed. Students whose homes are in Memphis should similarly notify the Dean and their instructors in advance of their proposed absence and arrange to make up their work. In the event that, because of sickness or other emergency, the student is unable to secure permission for absence beforehand, he should report his absence and the cause thereof to the Dean and to the

instructors concerned immediately upon his return. No excuses from chapel or classes will be accepted unless these regulations are observed, and the class grades will be proportionately lowered. Parents are urged to discourage absence because of its bad effect upon the student's academic work. Women students residing in Evergreen Hall will observe the additional regulations concerning absence from the campus which are in effect there.

3. All absences from his classes will be recorded by the professor in charge, and he will lower proportionately the grade of every student who incurs excessive absences.

4. On the two days before and the two days after holidays all absences receive a double penalty. All class absences on these four days are added to the number of absences from chapel incurred throughout the semester. When this total of absences reaches fifteen, one hour of additional credit for graduation will be required, and another hour for each additional fifteen. An hour for each fifteen absences will be deducted from the credits of students who transfer without having made up this hour.

5. The number of absences allowed under this regulation is to be increased by two for each semester grade of *A* and by one for each semester grade of *B* earned by the student during the previous semester. For new students, the grades made during the first report period will be used as the basis of calculation for the first semester in residence.

6. Exceptions to the rule for chapel absences will be made in cases of extra-curricular ac-

tivities when the student officially represents the college, in cases of prolonged absences caused by illness or other misfortune, and at the discretion of the Dean in cases of students coming daily from a distance.

7. The proper officers of all student organizations, including the athletic teams, must submit in advance to the Dean lists of the students likely to be sent as official representatives on out-of-town trips, and, immediately upon their return, there must be submitted a revised list showing who actually went.

A student who is persistently absent from any class or who discontinues a course without permission of the Dean, is automatically suspended from the college. During the period of suspension approximately one semester hour per week is deducted from the total credit earned by the student during the semester. This regulation applies to all class courses, and to physical education. After the first report period of each semester, a student who drops a course in which he is failing, incurs a mark of failure for the semester in that course.

CHANGE OF COURSE

If a student desires to make a change in his course of study, he should apply to the Dean for a card which is to be signed by the instructors of the classes concerned. Until this card has been returned to the Dean and his signature secured, the student is not excused from attendance upon the course he wishes to discontinue. For a change of course during the first week of the semester, no fee is charged. For each change in classification

at any other time the student is required to pay a fee of \$2.50 before the application will be granted.

In cases where the change of course requested involves any irregularity in classification, the student is required to present a written petition, countersigned by his faculty adviser, to the chairman of the Classification Committee.

No course entered after the expiration of the time allowed for change of course without fee, shall count toward the number of hours of credit which a student must obtain to be eligible for initiation into a fraternity or sorority.

COURSE RESTRICTIONS

All regular students must take one of the required courses of study which lead to a degree. Special students are required to take a course of study which will, if possible, enable them to make up their deficiencies in entrance subjects.

Exceptions to this rule may be made only with the written permission of the Classification Committee, which must be secured before the opening of the session. Letters concerning this should be addressed to the Chairman of the Classification Committee, SOUTHWESTERN, Memphis, Tennessee.

Each student is required to register in five courses, exclusive of physical education and the sophomore reading course. This requirement is exclusive also of laboratory work and such parallel work as is assigned in the various courses. Exceptions to this regulation can be

considered only upon a written petition to the Chairman of the Classification Committee.

Where exceptional circumstances prevail, a student may be granted permission to undertake less than five courses.

A student who is working to earn part of his expenses may be limited by the faculty to less than fifteen hours of class work a week.

Not more than two courses taken simultaneously in one subject or under the same instructor may count toward a degree.

No student may classify in first-year Greek unless he has had two years of a foreign language in high school or one year in college.

No two modern foreign languages may be begun at the same time.

EXCHANGE OF ROOMS

No exchange of rooms is allowed except with the permission of the Dean of Freshmen, and no subletting of rooms is allowed at any time. Students desiring to change quarters must, therefore, report to his office and secure permission to do so before such a change is made. Failure to comply with this regulation is penalized by a fine of five dollars.

EXCLUSION FROM COLLEGE

The college reserves the right to exclude at any time students whose conduct or academic standing it regards as undesirable, and without assigning any further reason therefor; in such cases the fees will not be refunded, in whole or in part, and neither the college nor any of its officers shall be under any liability for such exclusion.

NEW ORGANIZATIONS

Students desiring to form any new organization must apply in writing for permission to the Committee on Administration, and must state clearly the aims and the membership of the proposed group. Any local group wishing to become affiliated with a national organization must make similar application. In order to be recognized as college organizations, all groups, whatever their purpose may be, must have the official sanction of this committee.

PAYMENT OF BILLS

No student is enrolled for a shorter period than an entire semester.

All charges for the semester are payable in advance upon matriculation.

A student who does not pay his college bills promptly will be suspended until such bills are paid. During the period of suspension, approximately one semester hour per week is deducted from the total credit earned by the student during the semester.

No student will be certified for initiation into a fraternity or sorority, or receive honorable dismissal, or obtain a transcript of credit, or be permitted to graduate, until he has paid all of his college bills.

PHYSICAL EXAMINATION

Upon entering the college, every student is required to undergo a physical examination. The college physicians and the Department of Physical Education attend to this requirement. The results of this examination are recorded on duplicate blanks, one of which

is retained by the physician and the other is filed in the college office for reference. Physical defects which demand special attention are reported to the parents, and in the light of these examinations, corrective exercises are prescribed.

ROOM AND BOARD

All students who are not residents of Memphis or its immediate vicinity are required to live in one of the college dormitories and to board at the college dining hall.

SOCIAL FUNCTIONS

All student organizations are required to obtain permission from the Dean before giving an entertainment either on or off the campus. A social calendar will be kept in the Dean's office in which all public functions must be registered in advance.

STUDENT AGREEMENTS

No agreement of students with individuals or organizations, such as students or officers of another institution, or business concerns, will be recognized as binding upon the college unless and until approved by the Committee on Administration. This provision does not apply to those matters concerning the publications which are properly safeguarded by the Publications Board.

STUDENT COMMUNICATIONS

All communications or petitions from students or student organizations shall be in writing, and shall be addressed to the proper official or to the chairman of the faculty committee concerned.

WITHDRAWAL AND DISMISSAL

No students shall withdraw from the college in the course of any semester before consulting the President. The penalty incurred by the omission of this courtesy is indefinite suspension. A student will be considered in attendance until formal notice of withdrawal is filed in writing.

The college does not conceive its functions to include the problem of disciplining students who are not in sympathy with the ideals and spirit of the institution. The conduct of a responsible citizen and Christian gentleman is expected from all students. Any student who becomes antagonistic to the spirit and methods of the college will be dismissed whenever the general welfare demands such a course.

CHURCHES

The students are expected to attend regularly the morning service of that Church in town to which they belong, or which they elect to attend, but they are always welcomed and made to feel at home at all services of the various churches. SOUTHWESTERN students are especially invited to the Sunday morning Bible Classes and the Young People's Societies. A list of the various churches will be found in any of the Saturday papers.

A report of the church attendance of each student is taken up regularly each report period. In the matter of making this report, students are placed entirely upon their honor.

Faculty members will be glad to talk with new students in regard to the selection of a church home.

CHURCHES

(Memphis has a vast number of churches. Those listed below are a few which are in the vicinity of SOUTHWESTERN.)

BAPTIST

Bellevue Baptist Church, Bellevue Blvd. and Court Avenue—Rev. Robert G. Lee, D.D., pastor.

McLean Boulevard Baptist Church, 819 N. McLean Blvd.—Rev. David A. Ellis, pastor.

Union Avenue Baptist Church, Union Avenue and Summit—Rev. H. P. Hurt, D.D., pastor.

CATHOLIC

Blessed Sacrament Roman Catholic Church,
2550 Hale Avenue—Father Edward P.
Desmond.

Sacred Heart Roman Catholic Church, 1336
Jefferson Avenue—Father Louis J. Kemp-
hues.

CHRISTIAN

East End Christian Church, Peabody Avenue
and McLean Blvd.—Rev. J. J. Walker,
pastor.

Merton Avenue Christian Church, 2516
Princeton Avenue—Rev. J. Frank Donald-
son, pastor.

Union Avenue Church of Christ, 1912 Union
Avenue—Rev. I. A. Douthitt, pastor.

EPISCOPAL

St. Luke's Episcopal Church, 1720 Peabody
Avenue—Rev. Chas. S. Hale, rector.

HEBREW

Congregation Children of Israel, Poplar Blvd.
and N. Montgomery—Rev. Harry W.
Ettelson, Ph.D., rabbi.

LUTHERAN

First United Lutheran Church, 1548 Jackson
Avenue—Rev. V. D. Derrick, D.D., pastor.

METHODIST

Madison Heights M. E. Church, Monroe Ave-
nue and Claybrook—Rev. H. G. Cooke,
D.D., pastor.

Springdale Methodist Church, 751 N. Treze-
vant—Rev. E. W. Maxedon, pastor.

Trinity Methodist Church, 447 N. Evergreen
—Rev. Hal S. Spragins, D.D., pastor.

Union Avenue Methodist Church, 2117 Union
Avenue—Rev. Carroll Varner, pastor.

PRESBYTERIAN, NORTH

Lindsay Memorial Presbyterian Church, Tut-
wiler Avenue and Dickinson—Rev. Josiah
Sibley, D.D., pastor.

PRESBYTERIAN, SOUTH

Evergreen Presbyterian Church, 1663 Autumn
Avenue—Rev. W. J. Millard, pastor.

Idlewild Presbyterian Church, 1750 Union
Avenue—Rev. T. K. Young, D.D., pastor.

Parkview Presbyterian Church, Faxon Ave-
nue and Hollywood—Rev. A. T. Lindsay,
pastor.

DEGREES OFFERED

The degrees of Bachelor of Arts and Bachelor of Science are offered at SOUTHWESTERN. To obtain the one or the other a student must have attended a recognized college for at least eight semesters, or the equivalent in weeks, including four semesters at SOUTHWESTERN; he must have obtained credit for not less than 124 semester hours of standard college work; and he must have an average grade of at least C in all courses included in his major subject.

Three types of the A.B. degree and of the B.S. degree are offered:

- (1) The A.B. degree with honors.
The B.S. degree with honors.
- (2) The A.B. degree with distinction.
The B.S. degree with distinction.
- (3) The A.B. degree.
The B.S. degree.

Special work is required to obtain either the degree with honors or the degree with distinction. The requirements for the degree with honors will be found on page 50 of the catalogue, those for the degree with distinction are stated by each department under "Courses of Instruction," along with the description of its courses.

In general the degree with honors requires a tutorial course in the junior year and honors work in a restricted field during the senior year. The degree with distinction requires a senior tutorial course, and a departmental examination at the end of the senior year.

TUTORIAL COURSES

The tutorial courses, inaugurated at SOUTHWESTERN in September, 1931, have attracted widespread interest and commendation in the educational world. As early as November, 1931, the Carnegie Corporation, of New York, voted to SOUTHWESTERN a substantial grant to assist in defraying the heavy expenses—of additions to the teaching force and to the library equipment—made necessary by the adoption of the plan.

The tutorial courses, an adaptation to American conditions of the best feature of Old World education as carried on at Oxford and Cambridge, serve to stimulate the student by providing him with opportunity for work along the line of his own individual interest, and at a rate of progress adapted to his abilities. Their purpose is to stimulate him by freeing him from the restraints and constraints imposed by group instruction, and to place him in man to man and mind to mind contacts with his tutor in individual conference.

In his sophomore year the student devotes three hours a week to conference and private reading, for which work he receives one credit each semester. This reading is arranged so as to broaden the student's interest, and to prepare him for the more intensive tutorial courses of the junior and senior years. As the sophomore tutorial courses are all one-semester courses, the student during this year

comes into intimate contact with two advisers and gains some acquaintance with two entirely distinct fields of study.

In the junior and senior years the tutorial course attains its full scope, nine hours a week being spent on conference and readings, and three hours' credit being given in each semester. In these years the course lasts throughout the entire year, and is of a more advanced nature than the sophomore course.

The student may use his tutorial courses for intensive work in his major subject, or he may use them to broaden his intellectual horizon by reading in fields with which he has no previous acquaintance. If he cannot find his desired topic of study in the extensive list of courses offered, he has the privilege of petitioning the Tutorial Course Committee for a special course of his own selection, and this petition will be granted whenever it is possible to find a tutor to conduct conferences and direct the reading in the field of his choice.

HONORS COURSES

Any student may, at the end of his sophomore year, apply in writing to the chairman of the Honors committee for the privilege of being a candidate for Honors. This committee will grant or refuse permission after an examination of the student's record, and after consultation with the professor under whose guidance he proposes to work.

Students desiring to read for Honors in their senior year should make their plans towards this end as early as possible. Since the student will be expected to devote his entire time in his senior year to Honors work, as many degree requirements as possible should be fulfilled by the end of the sophomore year, the Tutorial Course of the junior year should be in the group of subjects selected for Honors, and all special degree requirements, including Bible 51 and 52 and a reading knowledge of a modern foreign language, should be fulfilled by the end of the junior year.

An Honors student has the opportunity to do more independent work, and also has the privilege of exemption from the usual schedule of five semester courses with semester examinations. If the student's work is not satisfactory, his name will be removed from the roll of Honors students, and he will lose these special privileges.

For the purpose of Honors work the subjects of study at SOUTHWESTERN shall be grouped as follows:

- I. *Literature and Humanities*: Bible, English, History, Philosophy, Greek, Latin, French, German, Spanish.
- II. *Natural Sciences*: Mathematics, Physics, Chemistry, Biology.
- III. *Social Sciences*: History, Economics, Political Science, Psychology, Sociology.

The student will ordinarily limit his Honors work to one of these three groups. However, if he desires to read in two different groups, his request will be carefully considered by the Committee on Honors. When the Honors program of a student has been approved, a statement will be given each candidate not later than the beginning of the junior year, of the minimum amount of work required, and also of what courses are required or advisable. The departments in which he is working will provide him with syllabi, which have the approval of the Committee on Honors.

Honors will be determined by a final written examination. The examination papers will be graded by three examiners, of whom at least one will be an outside examiner. The examination will be a comprehensive examination, testing both the general knowledge and the specific knowledge of the student in those portions of the field which he has chosen for his Honors work.

Honors will be conferred only upon those who have fully and satisfactorily met the exacting requirements for Honors, and either Honors or High Honors will be conferred. If the student's work for Honors is deficient either in extent or in quality, he may, upon the recommendation of the examiners, be granted the usual degree in course.

For the year 1936-37 the Committee on Honors consists of the following:

A. P. Kelso, Chairman	A. T. Johnson
F. E. C. Caspari	C. P. Lee
John H. Davis	J. R. Meadow
R. W. Hartley	P. N. Rhodes

CLASS HONORS

GRADUATING WITH HONORS

Audrey Gertrude Townsend, with high honors in English and high honors in Political Science.

Maurice Irwin Carlson, with honors in English and honors in Greek.

GRADUATING WITH DISTINCTION

Virginia Alice Alexander, with distinction in English.

Edna Langdon Barker, with distinction in English.

William Lacy Blue, with distinction in Political Science.

Elizabeth Hopestill Brewster, with distinction in English.

Laura Lee Cooke, with distinction in Bible.

William Wallace Cox, with distinction in Chemistry.

John Richard Drake, Jr., with distinction in Chemistry.

Louis Anderson Duffee, with distinction in Economics.

Richard Lamb Dunlap, Jr., with distinction in History.

Kate Chadwell Galbreath, with distinction in English.

Glenn Davis Gates, with distinction in Chemistry.

Raford Watson Herbert, with distinction in English.

Edmond Carlton Hutchinson, with distinction in Economics.

Jameson Miller Jones, with distinction in English.

Norma Lee, with distinction in English.

Malcolm Vernon Parker, with distinction in Biology.

Mary Anna Stockard, with distinction in English.

Richard Alexander Thomas, with distinction in English.

Richard Young Wallace, with distinction in History.

JUNIOR CLASS

First Place—Tie between Herbert Lloyd Cain and James Edward Henderson.

Next Place—John Farley.

Next Place—James Tipton Merrin.

SOPHOMORE CLASS

First Place—Tie between McCormick Gerald Burrow, Jr., and Wave Hunter McFadden.

Next Place—Lewis Randolph Donelson, III.

Next Place—Dorothy Carolyn Givens.

FRESHMAN CLASS

First Place—Thomas Barksdale McLemore.

Next Place—Tie between Arthur Ward Archer and Herbert Jonas Bingham.

Next Place—George Bartlett Gage.

The following prizes for the Session 1935-36 were awarded:

The Spencer First-Year Greek Prize to James Edward Henderson.

The Spencer Second-Year Greek Prize to Virginia Churchill Jones.

The Spencer Third-Year Greek Prize to Herbert Lloyd Cain.

The Spencer Fourth-Year Greek Prize to Maurice Irwin Carlson.

The Belk Bible Medal to Thomas Barksdale McLemore.

The Chi Omega Sociology Prize to Virginia Alice Alexander.

The Spanish Prize to Anne Catherine Schabel.

The Alpha Theta Phi Medal to Thomas Barksdale McLemore.

The Alpha Theta Phi Cup, a tie between McCormick Gerald Burrow, Jr., and Wave Hunter McFadden.

MUSIC

With the establishment of a Department of Music at SOUTHWESTERN, begun in the fall of 1935 by the appointment of Professor Burnet C. Tuthill as Director of Music, the campus musical organizations have been reorganized and vitalized. Opportunities for musical activities by the student body are now provided by the following organizations:

THE GLEE CLUBS

Both men and women singers are separately organized into men's and women's glee clubs, which will appear on suitable occasions and will make visits to nearby communities.

THE SOUTHWESTERN BAND

A complete marching band, with a personnel of forty, was organized in 1935. The band played for home football games and made one out-of-town trip with the team. It has also taken part in civic parades and various college events. The addition of new equipment is increasing the size of the band and giving opportunity for many to learn to play a band instrument under the instruction of Professor Tuthill. Concert music is also being included in the band program.

STRING ENSEMBLE

The string players among SOUTHWESTERN students are organized in an ensemble group.

particularly for their own enjoyment in playing together, and to appear at appropriate college functions.

THE COLLEGE CHOIR

This is a mixed chorus of men and women students, primarily to take part in Vesper Services and to lead the singing of hymns in chapel. The Choir studies the best types of choral literature, including secular as well as sacred numbers.

SOUTHWESTERN MUSICAL CLUB

The SOUTHWESTERN Musical Club was organized by a group of students and faculty members interested in familiarizing themselves with the best in music. To this end, members who play or sing prepare selections which are presented at the monthly meetings of the club. Local teachers and artists have been generous in giving recitals for the club.

BROADCASTING

Through the generosity of the *Commercial Appeal* and station WMC, a remote control line has been built to the college campus and SOUTHWESTERN programs are broadcast from the stage of Hardie Auditorium each week. These programs are planned and produced entirely by the students.

THE HONOR SYSTEM AT SOUTHWESTERN

ADOPTED AND PRESCRIBED BY THE STUDENT BODY

In order that in every sphere of academic work, good order and conduct becoming a gentleman may be secured, the students voluntarily accept and maintain an Honor System, and its standards are enforced by tradition and public opinion among the students. At the beginning of each scholastic year, the student body meets in solemn conclave, at which time the obligations of the Honor System, especially in the matter of reporting irregularities, are made perfectly clear and obligatory. Cards pledging their whole-hearted support of the Honor System are presented and signed by those students who are in accord with the plan.

The Honor System at SOUTHWESTERN applies not only to honesty in examinations, tests, and classroom work, but also to honesty in all phases of campus activities. It applies to dishonesty in any form, and any student who commits an unworthy act is guilty of a breach of the Honor System, and thereby subjects himself to the discipline of the Honor Council.

The cooperation of every student of the college is essential for the successful operation of the Honor System. It becomes, therefore, the duty of each student who enters SOUTHWESTERN not only to keep inviolate the trust reposed in him by the college, by avoiding all unworthy and ungentlemanly conduct

himself, but also to be ready and willing to report immediately to the Honor Council for action any one who may be guilty of any breach of the Honor System.

For the purpose of aiding in carrying out the Honor System, an Honor Council was established by the student body some years ago. In order, however, to clarify and perfect the system of student government at SOUTHWESTERN the following amendments to the constitution were adopted by the student body in December, 1925:

REPRESENTATION

The Honor Council shall be composed of thirteen members as follows:

From the Senior Class, three men and one woman.

From the Junior Class, three men and one woman.

From the Sophomore Class, two men and one woman.

From the Freshman Class, one man and one woman.

ELECTION

The junior, sophomore, and freshman classes shall elect their representatives for the following year in the first week of May. Nominations are to be made by the retiring Honor Council. Two candidates are to be named for each office to be filled. It is highly desirable that some members of the old Honor Council be elected on the Honor Council for the succeeding year. New freshmen shall elect their representatives on the third Monday in October. In every case the women shall elect the women representatives,

and the men shall elect the men representatives.

The Faculty agrees to vest full authority in the Honor Council and to act as a court of appeal. If upon the appeal of the accused person, or the minority of the Honor Council, the Faculty believes that an unjust decision has been made, it may submit the case to the Honor Council for a retrial.

Membership in the Honor Council is considered one of the highest honors in the power of the student body to bestow upon the individual members of the different classes.

The following have been chosen as members of the Honor Council for the 1936-37 session (the Freshman representatives to be chosen on the third Monday in October):

OFFICERS

President—James Tipton Merrin
Vice-President—William Roland Bethea, Jr.
Secretary—Betty Ireys Hunt

SENIORS

William Roland Bethea, Jr.
Thomas Crawford Fuller
James Tipton Merrin
Frances Weaver

JUNIORS

McCormick Gerald Burrow, Jr.
Henry Force Daniel
Betty Ireys Hunt
Warren Wilson Prewitt

SOPHOMORES

H. R. Holcomb, Jr.
William Hathaway Kelly
Vera Ann Ulrich

STUDENT ACTIVITIES

In 1934 the student body of SOUTHWESTERN adopted the point system for the curtailment of student activities. This plan was devised and presented to the Student Council by Omicron Delta Kappa.

The purpose of this plan is to develop leadership among a greater number of students and to stop the over-burdening of a few leaders. It will also enable students to do better work in their activities by more concentration, and allow them more time for study and social life.

The program allows each student thirty activity points a year. Each "F" will also count six points, thus barring students who fail all courses from engaging in any outside activities. Athletic points are seasonal, with football points being removed as soon as the season is over, thereby allowing participation in athletics at all times without running up too many points for the all-round athletes.

Activities are divided into classes as follows:

MAJOR ACTIVITIES

Class A (ten points)—Student body president; Sou'wester editor; Lynx editor; Choir director; Intramural sports director.

Class B (eight points)—President of senior class; Panhellenic president; business manager of Sou'wester and Lynx; Christian Union president; vice-president of student body.

MINOR ACTIVITIES

Class C (six points)—Secretary-treasurer of student body; president of Women's Undergraduate Society; heads of junior, sophomore, and freshman classes; Honor Council president; debate manager; active debaters; presidents of O. D. K., Stylus Club, Chi Delta Phi, Cap and Gown, all social fraternities and sororities; Ministerial Club president; Y.W.C.A. head; Honors candidates; Southwestern Players Head; Assistant editors of Sou'wester and Lynx; Publications Board president; major athletics (seasonal); every "F."

Class D (four points)—Honor Council members; O. D. K. members; Christian Union Cabinet members; Bible class president; active members of SOUTHWESTERN Players; Student body administration committees; Publications Board members; Sou'wester and Lynx staff; Journal editor; Musical Club president; Glee Club members; Nitist Club president; Spanish Club head; presidents of all other clubs; and those engaging in minor athletics (seasonal).

Class E (two points)—Membership in all clubs and societies on the campus.

PUBLICATIONS

Students interested in publication work have an unusual opportunity to exercise their ability on the four SOUTHWESTERN publications. The staffs of publications are selected by the Publications Board, which board chooses the men who have proven themselves both interested and capable. All freshmen, as well as all the other members of the student body who have had any experience along this line, are urged to connect themselves in any capacity with these publications.

THE SOU'WESTER

Editor—Thomas Crawford Fuller.

Business Manager—William Edward McCormick.

The members of the student body unite in publishing a weekly paper, the SOU'WESTER, which ranks well among collegiate publications, and which reflects credit on those who are charged with its management.

THE SENIOR YEARBOOK

Editor—James Tipton Merrin.

Business Manager—David Benjamin Gibson, Jr.

The Senior Yearbook has taken the place of the college annual. It contains pictures and personal histories of the seniors, and information about the classes, fraternities, athletics, clubs, organizations, and other matters of interest to the students in connection with life at SOUTHWESTERN.

THE STUDENTS' HANDBOOK

The object of this book is to extend to all students a warm welcome to the college, to introduce the first-year men to some of our customs and activities, and to invite all to share in the privilege of promoting the best interest of SOUTHWESTERN.

THE JOURNAL

Editor—Frank Oliver Goodlett.

The Journal is SOUTHWESTERN's literary magazine. All those who have acquired, or are desirous of acquiring, the ability to write are asked to contribute.

THE SOUTHWESTERN PUBLICATIONS BOARD

President—William Dunlap Cannon.

This board was organized for the purpose of exercising supervision and control of all student publications, with especial reference to their financial management and the soliciting of advertising.

All student publications must be authorized by the board, which also apportions the publication fees to the respective publications.

All moneys, whether from advertisements or fees, must be turned over to the treasurer of the board, and obligations may be incurred only on its approval. Financial statements must be rendered at the end of each report period by every publication.

No one shall solicit advertising in the name of SOUTHWESTERN without authorization from

the board. No publication, without its special permission, shall solicit local firms for advertising when such firms are already advertising in one of the other recognized publications of SOUTHWESTERN.

This board is composed of a president elected by the student body from the rising junior or senior class, three other students from the rising senior, junior, and sophomore classes, respectively, together with two faculty members appointed by the president of the college, and a permanent treasurer, the bursar of the college.

Ponder well, and know the right,
Onward, then, with all thy might!
Haste not! Years can ne'er atone
For one reckless action done.

Goethe.

ORGANIZATIONS

STUDENT BODY

President—John Farley.

Vice-President—Walter Davis May, Jr.

Secretary-Treasurer—Nancy Cunningham
Warden.

The student body is an organization composed of all the students of the college in any current year, and has authority in matters pertaining to student affairs.

The office of president is the highest honor in the power of the student body to bestow.

Nominations for Student Body President shall be heard the last Monday in April and the election shall be held the first Monday in May. Other officers of the student body shall be elected during the first week in May.

THE STUDENT COUNCIL

The Student Council is the official and representative organization of the student body. It outlines and discusses and presents matters for the consideration of the student body. It directs relations between the student organizations. While disciplinary matters are in the hands of the faculty, the Student Council helps to shape public opinion, cooperates actively with the administration, and acts as a clearing house between the students and the faculty.

The Student Council is composed of an *ex officio* group constituted as follows: the president, vice-president, and secretary of the stu-

dent body, which persons are elected by the student body and hold these same offices in the Student Council. The other members of this Council are the presidents of the four classes, of the Honor Council, of the SOUTHWESTERN Christian Union, of the Panhellenic Councils, of the Publications Board, and the editor of the SOUTHWESTER.

THE SOUTHWESTERN CHRISTIAN UNION

President—Paul McLauren Watson, Jr.

Vice-President—Murrah Coates Gattis.

Secretary—Dorothy Carolyn Givens.

The SOUTHWESTERN Christian Union includes those organizations which are distinctly devoted to the development of the spiritual life of the students, and includes at present the SOUTHWESTERN Bible Class, the Y.W.C.A. and the Ministerial Club. The Cabinet is composed of the officers of the SOUTHWESTERN Christian Union; Herbert Jonas Bingham, the president of the SOUTHWESTERN Bible Class; Wave Hunter McFadden, the president of the Ministerial Club, and Sarah Gracey, the president of the Y.W.C.A.

Among the activities of the SOUTHWESTERN Christian Union is a week of prayer and consecration. At these services a distinctly evangelical message is presented to the students of the college. Last session these meetings were held during the Week of Prayer in February. Reverend S. E. Howie, pastor of the Presbyterian Church of Tupelo, Mississippi, conducted the meetings.

The various organizations of the SOUTHWESTERN Christian Union endeavor to relate

themselves closely to the life and interests of the students.

THE SOUTHWESTERN BIBLE CLASS

President—Herbert Jonas Bingham.

This organization plays an important part in the religious life of the male students. It holds a meeting in the social room of Calvin Hall on the campus every Sunday immediately after the evening meal. It is taught by members of the faculty, various professors teaching the class for a limited period of eight or twelve weeks. This class forms the nucleus of an earnest group of students whose activities are by no means limited to the class meetings. Its members take an active part in the religious life of the community, helping to maintain mission schools in the outlying districts.

THE MINISTERIAL CLUB

President—Wave Hunter McFadden.

Vice-President—Carroll Varner, Jr.

Secretary—H. R. Holcomb, Jr.

The students at SOUTHWESTERN who are preparing for the ministry as their life work, and others who are interested, have organized themselves into an association with the twofold purpose of creating a feeling of fellowship and *esprit de corps*, and of presenting and discussing personal problems and those questions which pertain to the ministry. The club endeavors from time to time to secure the advice of those already in the ministry, and to obtain the benefit of their maturer judgment. Luncheon meetings are held weekly.

THE YOUNG WOMEN'S CHRISTIAN ASSOCIATION

President—Sarah Gracey.

Vice-President—Mary Elizabeth Cobb.

Secretary—Dorothy Carolyn Givens.

Treasurer—Betty Ireys Hunt.

The Y.W.C.A. is one of the organizations on the campus to which all girls can belong. It takes its purpose from the national organization, which purpose is stated as follows:

"We unite in the desire to realize full and creative life through a growing knowledge of God—

"We determine to have a part in making this life possible for all people—

"In this task we seek to understand Jesus and follow Him."

Although but a few years old, the SOUTHWESTERN Y.W.C.A. has flourished greatly. The helping with freshmen during the Orientation Period, Christmas and Thanksgiving kindness to a poor family, were a part of its work the past year.

All freshman girls who are interested in this work are invited to help in it.

THE EPISCOPAL CLUB

President—Herbert Lloyd Cain.

Vice-President—John Wilson Spence.

Secretary-Treasurer—Margaret Stockard.

Chaplain—Tom Edison Mitchell.

This club was formed by and is connected with the National Council of Episcopal Clubs, which has sponsored similar groups in other

colleges and universities. The primary purpose of the club is to bring students together, irrespective of religious affiliation. The club welcomes members of other denominations. The feature of the meetings of the club is informal discussion on the relation of religion to the problems of every-day life. Meetings are held twice a month, and various ministers of the city lead the discussions.

OMICRON DELTA KAPPA

President—Frank Newcomb Butler.

Vice-President—Robert Kenneth Armstrong.

Secretary—Dr. Ogden Baine.

The O. D. K. is a national honorary fraternity organized for the purpose of giving recognition to those all-round men of the junior and senior classes who stand preeminently for the upholding of the high standards of the college. Membership in the fraternity is limited to three per cent of the male members of the student body, to be chosen from the two uppermost classes in the college.

This fraternity was petitioned by and replaced the Order of the Torch, local fraternity with a similar purpose.

The O. D. K. is not merely a scholarship society, nor is it simply a literary or social organization, but, as will be seen from the qualities which are taken as a basis for selection for membership, its aim is to select the best all-round men in the college, and membership in this order is one of the highest honors to be won at SOUTHWESTERN.

THE STYLUS CLUB OF SIGMA UPSILON

President—Robert Kenneth Armstrong.

Sigma Upsilon is a national honorary literary fraternity with chapters in the leading colleges of the country. The Stylus Club of SOUTHWESTERN is a chapter of this fraternity, and was organized by a group of students and members of the faculty to stimulate authorship and criticism. It is purely an honorary society, and requires a high standard of scholarship, marked literary ability, and a certain congeniality. Membership is limited to twelve, chosen from the faculty, seniors, juniors, and sophomores; but sophomores must have completed three semesters. At the bi-monthly meetings a program is given consisting of original writing or a study of the work of current authors.

ALPHA THETA PHI

President—Herbert Lloyd Cain.

Vice-President—Edward Rudolph Atkinson.

Secretary—Frank Oliver Goodlett.

Alpha Theta Phi is a purely scholastic fraternity of both men and women students, including only those who have made the highest records in scholarship in the college. It is petitioning Phi Beta Kappa.

THETA ALPHA PHI

Theta Alpha Phi is a well-known national amateur dramatic society, and the SOUTHWESTERN chapter presents a number of plays

each year. The purpose is to foster wholesome dramatics, and to provide the means of uniting socially those students, alumni and instructors, who have histrionic talents.

CERCLE FRANCAIS

This club was formed to promote interest in French conversation and culture. Monthly meetings are held at which a program of music, short dramatic sketches, and talks is offered by the members. The club is limited to thirty students from the advanced French courses.

THE SPANISH CLUB

The Spanish Club exists for the purpose of cultivating a more practical acquaintance with the life, language, and literature of the Spanish-speaking peoples. Membership is limited to those students who have had two years of college Spanish, or its equivalent, or who have otherwise acquired an oral command of the language. Meetings are held every three weeks. They are partly social and in part given to formal programs, including dramatic performances, addresses, and round-table discussions.

GOLF ASSOCIATION

The Golf Association is an organization of all those interested in golf. The splendid Overton Park course is available for use of members, and tournaments are held every year.

SOUTHWESTERN PLAYERS

President—Angus Randall MacInnes.

The SOUTHWESTERN Players form the dramatic group on the campus. Each year the

members study a number of sketches and plays both for studio presentation and for public performance. In such phases of dramatic art as acting, directing, costuming, staging, lighting, and playwriting, excellent training is offered. Outstanding work in any of these is rewarded by membership in the national amateur dramatic fraternity, Theta Alpha Phi. Tryouts of applicants for membership are held the first of each semester, and at that time the most promising candidates are elected to the organization.

CHI BETA PHI

President—Charles Andrew Barton.

Chi Beta Phi is a national honorary science fraternity composed of only those men students who are majoring in science and who have made a high scholastic average in their courses.

TAU KAPPA ALPHA

Tau Kappa Alpha, the national forensic honor society, has a chapter at SOUTHWESTERN. The purpose of this fraternity is to stimulate forensic attainment by electing to membership students who have shown outstanding ability in speech activities. The fraternity endeavors to promote high standards of speech and interest in debating by sponsoring the various speech contests and intercollegiate debates. Under its auspices the SOUTHWESTERN debaters make several trips to other colleges each spring.

THE PRESS CLUB

The students at SOUTHWESTERN, who are interested in journalism in any of its varied forms, organized the Press Club to enlarge the horizon of its members by having outsiders who are engaged in the work address them at their meetings. The organization is open to any student who submits an acceptable news story, feature story, and editorial.

WOMEN'S UNDERGRADUATE SOCIETY

President—Edith Virginia Hoshall.

This society was organized under the direction of the Dean of Women. Its membership includes all the women students of SOUTHWESTERN, each class being organized separately. The main purpose of this society is to promote interclass competition among the women students in all lines, especially in athletics.

THE LAW CLUB

This club was founded by a group of students interested in the study of law. Membership is open to all who wish to participate in the pursuit of such an organization. Meetings are held every two weeks. They afford the privilege of hearing addresses on different phases of law by prominent Memphis lawyers.

THE NITISTS

Chairman—David Hays Flowers.

The Nitists are twenty men from the students and the faculty who meet on alternate

Thursdays in the Bell Room of the College. At each meeting one member of the group reads a paper on some subject of philosophic, ethical, or social nature. Then each member in turn is called upon to discuss or criticize the paper. Non-members from within or without the college may be invited to attend meetings when the subjects are of special interest to them.

THE TENNIS CLUB

The Tennis Club is made up of professors and students. Every spring members of the Tennis Club engage in a tournament for championship in men's singles and doubles, in women's singles and doubles, and in mixed doubles. This club has the use of eight splendidly kept courts which adjoin Fargason Field.

THE LYNX CLUB

The functions of the Lynx Club are twofold: to welcome and act as hosts to visiting college teams and guests of the college, and to act as ushers at athletic contests. It is composed of outstanding members of the upper classes. Members of this club wear distinctive red blazer coats with the word *Lynx*, and an "S" on the breast pocket. The college cheer leader and the president of the student body are *ex officio* members of the club.

THE "S" CLUB

The "S" Club is composed of all the men who have earned a letter in any one of the intercollegiate sports in which SOUTHWESTERN takes part. These sports are, at present, football, basketball, tennis, and track.

THE SOCIAL FRATERNITIES

There are six well-established chapters of leading national fraternities on the campus of SOUTHWESTERN. These six, named in the order of foundation, are Pi Kappa Alpha, Alpha Tau Omega, Sigma Alpha Epsilon, Kappa Sigma, Kappa Alpha, and Sigma Nu.

The various fraternities have plans under way for the erection of lodges on the campus. Three of them, Kappa Sigma, Sigma Alpha Epsilon, and Kappa Alpha have already built splendid lodges.

There are chapters of five national sororities. These are Chi Omega, Kappa Delta, Alpha Omicron Pi, Zeta Tau Alpha, and Delta Delta Delta. All sororities have erected very attractive lodges on the east side of the campus.

Only regular students are eligible for these organizations, and no student may be initiated into one of them until after the first semester. In order to be eligible for initiation, a student must have passed at least twelve semester hours net at SOUTHWESTERN during the preceding semester, and must have the written certification of the Registrar and the chairman of the Committee on Scholarship and Statistics, which cannot be given until all college accounts are settled in full. No course, entered after the expiration of the time allowed for change of course without fee, may count towards the number of hours

credit which a student must obtain to be eligible for initiation into a fraternity or sorority.

In accordance with recent actions of the Panhellenic Councils, and at their request, the faculty has adopted the following regulation:

"No fraternity or sorority may initiate any new members unless the grades of its active members for the two semesters preceding average at least 1.75."

Two societies, Pi and S. T. A. B., organizations which strive to promote friendly relations between sororities, have chapters at SOUTHWESTERN.

THE PANHELLENIC COUNCILS

The Panhellenic Council has the hearty support of the college authorities, and the pledged cooperation and support of each of the fraternities on the campus. As stated in the Constitution, the Council is to handle all matters concerning the several fraternities in their relations with the student body.

The special attention of the new student is called to the rules that have to do with pledging, since a clear understanding of, and a careful adherence to, these rules will probably save embarrassment for both the student and the fraternity.

RULES OF THE MEN'S PANHELLENIC COUNCIL

The following are the rules adopted by the Men's Panhellenic Council to control rushing for the session of 1936-37:

1. There will be open rushing during the summer until September 16.

2. The quiet season will begin with freshman orientation and will continue until Wednesday, September 23 at 2 p.m. Rushing will start at 2 p.m. Wednesday, September 23, and will continue through Wednesday, Thursday, and Friday. Rushing will end and a quiet period will begin at 12:00 midnight, Friday, September 25. Pledging will be by preferential system at 6:15 p.m., Saturday.

3. The Panhellenic Council will make all dates. Each fraternity will submit its list of prospective rushees, and the dates will be allotted to each fraternity by the Council.

4. Major dates are defined as afternoon dates and night dates. Afternoon dates are to last from 2:00 p.m. *until* 6:00 p.m. Night dates are to *begin* at 7:30 p.m. and *end* at midnight.

5. There will be no minor dates. Violation of this rule by any fraternity will constitute a major offense.

6. Rushing and dates may take place outside the city limits of Memphis, but any such occasion *must* be reported to the head of the Council.

7. No fraternity shall prevent or interfere with a rushee's being on time for his next date. Rushees must be prompt in keeping their dates.

8. No party, held during the rush season, to which rushees are invited, shall be given, the cost of which exceeds ten dollars. Each

fraternity will be required to submit to the Council an itemized expense account of each rush party held.

9. There shall absolutely be no change in dates by either the fraternity or rushee.

Any fraternity, a member or members of which violate any of these rules, must pay a fine of not more than twenty-five dollars and not less than ten dollars at the discretion of the Panhellenic Council, within one week of conviction. Failure to pay this fine in full will cause the fraternity so convicted to be deprived of pledging privileges and to be suspended from the Council for the first semester of the 1936-37 session.

Any freshman or new student guilty of participating in any violation of these rules will forfeit his privilege of pledging that fraternity, in whose interest the violation was made, during the first semester of the 1936-37 session.

The trial of the fraternity or fraternities accused of violating these rules shall be conducted by a tribunal composed of five members of the faculty duly selected by the Panhellenic Council. This tribunal shall convict or acquit by a majority vote. The chairman of this body shall receive and entertain all charges brought against any fraternity.

Council members are:

Charles Curtis Taylor, President, Kappa Sigma.

Louis Chenault, Vice-President, Sigma Nu.
Alfred Page, Secretary-Treasurer, Kappa Alpha.

Charles Andrews Barton, Pi Kappa Alpha.
Douglas Johnston, Pi Kappa Alpha.

John Farley, Alpha Tau Omega.

William McKnight Lapsley, Alpha Tau Omega.

Walter Davis May, Jr., Sigma Alpha Epsilon.

James Tipton Merrin, Sigma Alpha Epsilon.

Robert Kenneth Armstrong, Kappa Sigma.

Frederick Dickson, Kappa Alpha.

James Merrill Breyspraak, Sigma Nu.

RULES OF THE WOMEN'S PANHELLENIC COUNCIL

The Women's Panhellenic Council is composed of two women from each of the five sororities represented on the campus.

The following are the rules adopted by the Council to control rushing for the summer of 1936:

1. There shall be closed rushing beginning June 2 at noon and lasting until the formal rushing season in the fall.

2. By closed rushing we mean (a) that no individual engagements shall be made or rush parties of any sort be given for prospective SOUTHWESTERN students, (b) that rushees and fraternity women cannot double-date, (c) and cannot attend the same, small, quickly-planned, informal gatherings. However, we do not feel that we can keep fraternity women and rushees from attending the same "big" or public dances, wedding parties, or house parties at popular resorts near Memphis. There-

fore, attending these will not be considered an infringement on these rules governing closed rushing. Fraternity women are expected to uphold these "closed rushing rules" and to remember that "seriously rushing" a girl before she matriculates in college is a violation of the National Panhellenic rushing rules which is punishable by the removal of the chapter's charter.

3. Fraternity women can attend all parties given by other girls, but not those given by little sisters or girls once affiliated here if at such parties other rushees are present.

4. By fraternity women we mean all actives and pledges of SOUTHWESTERN chapters and all women in Memphis affiliated with the alumnae clubs. Members of other college chapters and friends in town cannot be forced to abide by those rules but their cooperation is anticipated.

5. If any sorority as a group or any individual member deliberately breaks these rules, the penalty shall be the removal of that chapter's privileges to rush and pledge until the second semester. If, however, it is the decision of the Council that this penalty is too hard for any individual case that should arise, it can change this sentence to a slightly lighter one after due consideration of the facts presented.

6. Rushing will begin one week after the opening of the College. The first of the three teas allowed will be given on Thursday, September 24, and pledging will be on Saturday, September 26 at 7 p.m.

Council members are:

Sarah Gracey, President, Zeta Tau Alpha.

Helen Ruth Acroyd, Vice-President, Delta Delta Delta.

Nancy Cunningham Warden, Secretary, Chi Omega.

Betty Ireys Hunt, Chi Omega.

Jane Adams, Kappa Delta.

Virginia Hoshall, Kappa Delta.

Mary Elizabeth Cobb, Alpha Omicron Pi.

Rebecca Anne Laughlin, Alpha Omicron Pi.

Jane Fawbert Alvis, Zeta Tau Alpha.

Mary Catherine Giuliani, Delta Delta Delta.

THE SANHEDRIN COUNCIL

The Sanhedrin Council is a disciplinary body, made up of the men's Sanhedrin and the women's Sanhedrin. It is responsible for making and enforcing all rules regarding the conduct of the freshmen.

The following rules have been adopted by the men's Sanhedrin to govern the freshmen for the session 1936-37:

1. Freshmen must speak to all members of the student body and tip their hats to professors as the other students do.

2. Freshmen must allow upperclassmen to enter dining hall first. Four or five freshmen shall sit at each table, moving about from time to time; and they shall occupy the seats next to the wall. Freshmen shall be careful of their manners and see that the upperclassmen are well served.

3. Freshmen must attend all athletic contests and sit together in certain sections.

They shall exhibit much enthusiasm and pep at all times.

4. The first Saturday after the opening of the session all freshmen must have in their possession a farmer type straw hat with a brim not less than four inches in width. These hats must be worn at all times, until after winning the second football game of the season. The wearing of the straw hat indicates who are freshmen and tends to establish class unity.

5. Freshmen must not be seen on the grass, but must use the walks exclusively.

6. With the exception of Saturday and Sunday nights, and on especially designated occasions, freshmen must be in their rooms STUDYING by nine o'clock, unless they have an excuse from the chief of the dormitory.

7. Complaints must be made to the Sanhedrin in writing and either signed or presented in person.

8. Within one week after the opening of the session all freshmen must know the Alma Mater song.

9. Freshmen must know all professors by name and must know the departments in which they teach.

10. Anyone failing to comply with the orders of the Sanhedrin will be required to appear before that august body.

The women's Sanhedrin has adopted the following rules for the session 1936-37:

1. Freshettes must know all professors by name and must know the departments in which they teach.

2. Freshettes must speak to all members of the student body.

3. Within one week after the opening of the session all freshettes must know the Alma Mater song. Before the first athletic event they must know the college cheers.

4. Freshettes must attend all athletic contests and sit in certain sections. They shall exhibit much pep and enthusiasm at all times.

5. Freshettes must not attend athletic contests with dates. They must not have "hour dates" between classes.

6. Freshettes must wear their names printed on cards (not less than ten inches long and four inches wide) which must be pinned on the back. Their names shall be printed in large plain letters.

7. Freshettes must not be seen on the grass, but must use the walks exclusively. They must enter and leave Palmer Hall by the front door. Use of the side door is not permitted freshettes.

8. Complaints must be made to the Sanhedrin in writing and either signed or presented in person.

9. Any one failing to comply with the orders of the Sanhedrin will be required to appear before that august body.

SOUTHWESTERN'S ATHLETIC CODE

As an athlete I am determined—

1. To play the game to the limit of my capacities, giving each detail the greatest care and attention.

2. To strive to carry more than my own burden, to do a little more than my share, not seeking help from others.

3. To correct my faults, ever eager to learn and improve, never seeking to cover up or conceal mistakes made.

4. To carry the fight to the opponents with the spirit of the "Old Guard" that dies but never surrenders.

5. To be unselfish in endeavor, caring more for the satisfaction which comes from doing a thing well than for praise.

6. To glory in fighting against odds like the Lacedæmonians, who never asked of the enemy "how many are there" but "where are they?"

7. To hate an alibi, knowing that the man who makes excuses admits his weakness and has a dwarfed soul.

8. To rise above obstacles, to fight harder when the game is going the other way than when winning.

9. To fight with an unconquerable spirit, realizing with every act that "the deed is the measure of the man."

10. To play according to the letter and the spirit of the rules, scorning an unfair advantage over an opponent.

11. To remember that the measure of achievement is not the victories won, but how I played the game.

12. To be undismayed by defeat, but with a will hardened by adversity seek to learn the cause of failure.

13. To be unspoiled by victories, realizing that brave men are softened by success rather than by defeat.

14. To give the best that is in me, to the end that I may be a better student, a better citizen, a better man.

ATHLETICS

The college athletics are controlled by the Committee of the Faculty on Athletics. The semester fee to the college pays for all physical training and for admission to all intercollegiate contests on Fargason Field. Every student, upon entrance, is given a thorough physical examination by the college physician, and, if he is physically fitted for it, he may compete for any athletic team or participate in any form of exercise under the supervision and guidance of the director of athletics.

If not fitted for participation in major sports, he may engage in such games and physical training as are best suited to develop him and to keep him in good health.

SOUTHWESTERN engages in intercollegiate contests in football, basketball, track, golf, and tennis. There is a Tennis Club, made up of professors and students. Every spring members of the Tennis Club engage in a tournament for championship in men's singles and doubles, in women's singles and doubles, and in mixed doubles.

The Committee of the Faculty on Athletics may at any time during a semester limit athletic participation and remove from teams any student whose scholarship record is unsatisfactory.

SOUTHWESTERN is a member of the Southern Intercollegiate Athletic Association and the Dixie Conference. The eligibility of the members of its athletic teams is governed by the constitution, by-laws and rulings of these bodies.

1936 FOOTBALL SCHEDULE

Sept. 19—	Arkansas State College at Jonesboro.
Sept. 25—	Union University at Memphis (night).
Oct. 3—	Millsaps College at Memphis.
Oct. 10—	Vanderbilt University at Nashville.
Oct. 16—	University of Chattanooga at Chattanooga (night).
Oct. 24—	Hendrix College at Memphis.
Oct. 31—	Howard College at Birmingham.
Nov. 7—	Birmingham-Southern at Memphis.
Nov. 13—	Loyola University at Memphis.
Nov. 21—	Centre College at Danville.

VARSITY TRACK RECORDS

<i>Event—Holder</i>	<i>Record</i>	<i>Year</i>
100 yard dash Harold High	10.2	1932
220 yard dash Herbert Newton	22.5	1931
440 yard dash Herbert Newton	50.1	1933
880 yard run Harold High	2:1.1	1933
One mile run Clark Porteous	4:37.7	1932
Two mile run Riley McGaughran	10:9.8	1931
120 yard high hurdles Eldridge Lilly	16.2	1930
220 yard low hurdles John McKay Boswell	26:00	1936

Mile relay Harold High, Andrew Edington, William Wilson, Herbert Newton	3:33.5	1933
Pole vault Morris Ford	12:5 $\frac{3}{8}$	1929
Shot Herman Davis	41.10	1935
High jump Porter Chappell	6:00	1936
Discus Herman Davis	137:00	1936
Broad jump Herbert Newton	22:6.5	1931
Javelin Perry Bynum	154:5	1930

FRESHMAN TRACK RECORDS

<i>Event—Holder</i>	<i>Record</i>	<i>Year</i>
100 yard dash Harold High	10.2	1930
220 yard dash Murray Rasberry	23.8	1933
440 yard dash Herbert Newton	53.4	1930
880 yard run Henry Turner	2:14:2	1936
One mile run Clark Porteous	5:0.2	1931
Two mile run Riley McGaughran	10:26.0	1930
120 yard high hurdles McMath Givens	20.5	1932

220 yard low hurdles			
John Baker	27.5		1933
Mile relay			
Porter Chappell, Gordon Medaris, William Mitchell, Louis Weeks	3:49		1934
Pole vault			
Gaylon Wesley Smith	11:0		1936
Shot			
Will Rhea Winfrey	44:07		1936
High jump			
John Barnes	5.6		1932
Discus			
Westley Busbee	130.9		1931
Broad jump			
Marion Cobb	19:11½		1933
Javelin			
Westley Busbee	148.0		1931

VARSITY ATHLETIC AWARDS 1935-36

FOOTBALL

Francis Buchanan Benton
 James Scott Chapman
 Porter Hudson Chappell
 Herman Mortimer Davis
 Mark Benjamin Hammond
 James Raymond Haygood
 James Thayer Houts
 George Oliver Jennings
 Harvey Ellis Jones
 Robert E. Lee
 James Arthur McDonald
 Richard Christian Mays

Henry Clay Nickells
 Charles A. V. Nickles
 Don Garrett Owens, Jr.
 William Richard Parker
 Mike Pepper
 Gilbert Dumas Pitt
 Warren Wilson Prewitt
 Murray Rasberry
 Clois Shelton Ray
 Neil Moore Tapp
 Hubert Gilbert Williams
 John Watts, Manager

BASKETBALL

Dorsey Jamison Barefield
 James Merrill Breytspraak
 William Dunlap Cannon
 Herman Mortimer Davis
 William McKnight Lapsley
 Richard Christian Mays
 Henry Clay Nickells
 Hilliard Earl Jordan, Manager

TENNIS

Dorsey Jamison Barefield
 Frank Newcomb Butler
 William Dunlap Cannon
 Richard Lamb Dunlap
 David Hays Flowers

TRACK

Herman Mortimer Davis
 John McKay Boswell
 Porter Hudson Chappell
 Henry Thomas Hammond
 Sherman Kelley
 Wave Hunter McFadden

FRESHMAN ATHLETIC AWARDS

1935-36

FOOTBALL

Joseph Welborn Bragg
King Stanford Butler
Chester Cecil Carden
William Harrison Dalrymple
Roy Stanley Fisher
Charles O'Dell Gardner
Cecil Ivan Garrison
Marvin Leslie Gattin
George Frederick Humphrey
Clois Noel Neal
Orley Melford Nettles
Carl John Roth
Woodrow Wilson Scott
Gaylon Wesley Smith
Will Rhea Winfrey
Jack Shelton Pilkington, Manager

BASKETBALL

Carl Phillip Burns
Cecil Ivan Garrison
Fontain Martin Johnson
Felton William Martin
Clois Noel Neal
Orley Milford Nettles
Levon Cockrit Self
Gaylon Wesley Smith
Henry Collier Walker, Manager

TRACK

Gaylon Wesley Smith
Henry Bowling Turner
Will Rhea Winfrey

WOMEN'S ATHLETIC AWARDS

Class making the highest number of points
—Freshman Class.

Sorority making the highest number of
points—Delta Delta Delta.

Basketball trophy—Chi Omega Sorority.

Tennis trophy—Letitia Elizabeth Mont-
gomery.

Beginner's golf trophy—Margaret Randolph
Tucker.

1936-37 OFFICERS OF WOMEN'S ATHLETIC ASSOCIATION

President—Mary Catherine Giuliani.

Junior Representative—Margaret Stockard.

Sophomore Representative—Harriet Spencer
Pond.

CLASS SCHEDULE, FIRST SEMESTER

Hours	MON.	TUE.	WED.	THUR.	FRI.	SAT.
8:30	Chapel	Chapel	Chapel	Chapel	Chapel	Chapel
9-10						
10-11						
11-12						
12-1						
1 p.m.	Lunch	Lunch	Lunch	Lunch	Lunch	Lunch

88

CLASS SCHEDULE, SECOND SEMESTER

Hours	MON.	TUE.	WED.	THUR.	FRI.	SAT.
8:30	Chapel	Chapel	Chapel	Chapel	Chapel	Chapel
9-10						
10-11						
11-12						
12-1						
1 p.m.	Lunch	Lunch	Lunch	Lunch	Lunch	Lunch

88

MEMORANDUM

MEMORANDUM

MEMORANDUM