



1986.
c.1

CORRECTION: Under the heading Greek Life, the Panhellenic and Inter-Fraternity Council presidents are incorrect. The new 1986-87 presidents are Andy MacQueen, IFC, and Wendy Tallent, Pan.

STUDENT HANDBOOK

1986-87

A Guide to Rhodes College

Heather Hicks, editor

Jeni Cushman, photography selection

Chris Allen, Jeni Cushman, Laura Holman, Kelley Nixon, assistants

Sara Hodges, Tom Lamb, proofreaders

The Printer, printing

Jean Roberts, typesetting

“The information contained herein was prepared and published by the Student Publications board in an effort to acquaint new students with the organizations and activities at Rhodes College. However, the contents hereof have not been officially reviewed or approved by the administration of the college, nor do the contents hereof constitute any portion of the contractual obligation between the student and the college.”

Our Story

Before its move to Memphis, the college was located in Clarksville Tennessee, where it had its origins in the Clarksville Academy, founded in 1837. The Academy conveyed its property in 1848 to the Masonic Grand Lodge of Tennessee and was merged into the new Masonic University of Tennessee, a degree-granting institution of higher education. This institution became Montgomery Masonic College in 1850, and in 1855, its name was changed to Stewart College, in honor of its president, William M. Stewart. Under President Stewart's leadership the operation of the college passed from the Masonic Lodge to the Presbyterian Synod of Nashville.

Under the "Plan of Union" of 1873, the Synods of Alabama, Arkansas, Memphis, Mississippi, and Texas joined the Synod of Nashville in a cooperative effort to reorganize Stewart College after the Reconstruction Era and to operate it as a single Presbyterian college for the entire area thus represented, which was at that time commonly considered to be the Southwest.

In 1875, Stewart College became Southwestern Presbyterian University, developing alongside the undergraduate curriculum a School of Theology, which remained in operation until 1917. When the college moved to Memphis in 1925, it adopted as its official title Southwestern At Memphis, denoting a liberal arts college.

In 1973, a general reorganization of boundaries of synods within the Presbyterian Church instituted the college's present relationship with two larger synods. The former Synod of Louisiana is now part of the Synod of Red River, and the former Synods of Mississippi, Alabama, and Tennessee are now part of the Synod of the Mid-South. Rhodes College's relation to the Presbyterian Church in the United States has remained close and unbroken since 1855.

In the summer of 1984, a special session of the Board of Trustees convened to consider changing the name of the college due to possible confusion with other institutions named Southwestern. After much debate, the Board voted to change the name of the college to Rhodes College, in honor of Peyton Nalle Rhodes, a former president of the college.



President Jim Daughdrill and his wife, Libby.

ADMINISTRATION

It is important to remember that the administration here at Rhodes College is here to help. Don't let them intimidate you; with few exceptions, we actually have human beings working here. The administration cares about you and your experience here and they will be glad to assist you in any way possible, so many of them offer an open-door policy, although an appointment is always encouraged to make sure that they will be available. This section lists those that you will most likely come into contact with during your stay at Rhodes.

president of the college

James H. Daughdrill, Jr.
329 Halliburton Tower

The president is the chief spokesperson of the college as well as the chief officer of the administration and faculty. The president, in promoting the interests of the college, spends much of his time in meetings and out-of-town. As the head of the college, he delegates much of his power to keep Rhodes running smoothly and so you should approach the appropriate office before coming to the president.

vice-president and dean of the college

Gerald Duff
225 Palmer Hall, Gooch Wing (3795)
Hours: 8:30-12:30; 1:30-5:00

Working with the faculty members and individual departments, he seeks to maintain the variety and standards of the educational system, to secure new faculty, and to safeguard student and faculty freedoms and interests. This office deals with all academic matters, including the Dean's list and academic probation.

associate dean of the college

Robert Llewellyn
221 Palmer Hall (3795)
Hours: 8:00-5:00

This office assists the Dean in many academic and organizational matters. Students are encouraged to discuss petitions with the Associate Dean. A key function of the Associate Dean is to coordinate the "faculty-advisor" system. Each student is assigned an advisor when he or she first arrives at Rhodes. When students have declared their majors, they are assigned an advisor in the appropriate department.

dean of students office

Dean of Students (To be announced)
Frayna E. Goodman, Acting Dean of Students
Director of Student Activities (To be announced)
229 Gooch Hall (3815)
Hours: 8:30-5:00

This office oversees all student extracurricular activities, student residence halls, campus organizations, the student counselor program, and many other aspects of community life. This is the place to go when you are in a bind or simply seeking a helping hand. This office maintains the college calendar and hears requests for use of campus facilities.

The Dean of Students is in touch with the students on a day-to-day basis by hearing complaints, offering advice, etc. His is a mammoth job: keeping the relations between the students of the community running as well as possible.

Focusing on such groups as dormitory residents, Black Students Association (BSA), Town Students, Panhellenic (PAN), and Inter-Fraternity Council (IFC), Frayna Goodman is responsible for helping to coordinate all the events these organizations offer to the campus. She also maintains a listing of various off-campus housing opportunities for Rhodes students. Frayna is also responsible for keeping the Resident Advisor system running smoothly, from planning campus events to investigating dorm damage.

The Director of Student Activities plans the Freshman Orientation Program, Parents' Weekend, and assists in Campus events, Social Commission affairs, Student Center activities, and the grill. He welcomes any and all suggestions for improving the social life at Rhodes.

admissions

Dave Wottle, Dean
100 Palmer Hall (3700)
Hours: 9:00-5:00

This office is responsible for attracting quality students (like you) to Rhodes, through high school visits, on-campus programs and a special college symposium for prospective students. The success of their programs depends very heavily on the help of current students. This entails everything from giving campus tours to offering overnight housing to participating in a phone-a-thon which answers prospective students' questions. Your involvement is greatly appreciated, so keep your eyes open for an organizational meeting in the fall.

administrative services

Tom Kepple, Dean
103 Palmer Hall (Ext. 3761)

Dean Kepple oversees the College's business and financial operation and the physical plant. He welcomes student input and is always available to speak to student groups with reasonable advance notice.

bookstore

Jane Darr, Manager
Debbie Jordan, Assistant Manager
Hope Armstrong, Administrative Assistant
Hours: 8:30-4:00

Located on the west side of the first floor of the Briggs Student Center, the Bookstore provides full service for the entire Rhodes community. Any proceeds above operating costs are directed into the general operating fund. Visa and MasterCard are accepted here. In addition, credit privileges are extended to students upon completion of a credit application and approval from the Cashier's office.

Your major investment at the Bookstore will be to purchase your textbooks. An average of \$150.00 should cover the cost of first term coursebooks depending on the curriculum you follow. Remember that prices are established by the publisher and not by the Bookstore. Used books are offered in as many titles as possible. Full refunds will be given on all clean, unmarked textbooks with receipt within ten days following the start of the term. Also, the Bookstore will buy books at the end of each term from students.

Other Bookstore services include: General Reading (they will be glad to order a book which is not in stock at no extra charge), college sportswear, health and beauty aids, film and film processing, postage stamps and stationery, and snacks.

computer center

Charles Lemond, Ph.D., Director
300 Palmer

Rhodes has two computers available for use by the faculty, staff, and students, DEC VAX 11/785 and a DEC VAX 11/750. Both machines are located in 300 Palmer, with terminals placed at various academic libraries on campus. The main block of terminals is located in the basement of Burrow Library. No charge is made for students wishing to use the computing facilities, and one need not be enrolled in a computer course in order to obtain a number. Accounts will be issued to all students at registration. Don't feel like you have to be a scientific whiz kid to learn how to operate the computer; there are programs available which anyone can learn to help you in typing and editing term papers. See the staff for more details.

registrar

Glenn Munson
108 Palmer Hall (Ext. 3885)
Hours: 8:30-3:00

Class schedules, exam dates and times, forms for drop/add, pass/fail, and major declaration, petitions for directed inquiry, overloads, and waivers for academic regulations can be found in this office as well as transcripts (there is a \$2.00 fee after the first one), degree requirements and general information.

cashier's office

Sarah Bowlan, Cashier
105 Palmer Hall (3753)
Hours: 8:30-3:30

Pay tuition, fees, fines, and parking tickets here. Mrs. Bowlan is willing to help with any accounts; if you are confused go to her. All UPS, Special Delivery, and Certified letters are delivered here. Stamps and scales for weighing parcels are available.

Students may cash checks for up to \$25.00 a day (make checks out to Rhodes College) and may set up student deposit accounts. A student deposit account offers no interest and check writing is not necessary. The program allows the student to withdraw up to \$35.00 a day from the account without prior notice. One day prior notice allows for an unlimited release of funds.

The cashier's office also serves as the colleges Lost-and-Found depository. Come here when you leave your retainer on a tray in the refectory.

health service

Doris Gill, Resident Nurse
Moore Moore Infirmary (Ext. 3895)

Infirmary Hours:

Weekdays 8:00 a.m. - 10:00 p.m.
Weekends 8:30 a.m. - 10:00 p.m.

Strategically situated next to the refectory, the Moore Moore Infirmary has 13 beds with 24 hour health care extended to all full time students. Flu shots are offered in the fall for the price of the serum. Allergy shots can also be administered in the Infirmary. A small fee is charged for the disposable syringes. Bring your medication, with directions, to the Infirmary when you arrive on campus. Make sure you bring a large enough supply of all medications to last until you return home; out-of-town prescriptions are NOT refillable.

Certain routine medications and services are furnished free of charge as part of the Health Service's function. Special services, x-rays, and laboratory work are billed directly to the student. If you have to go to the emergency room, be ready to pay cash or a check from a local bank; out-of-town checks are not accepted. Night emergencies should be reported to your R.A., and he/she will contact the nurse.

You should keep a supply of band-aids, aspirin and thermometers in your room in order to avoid a walk to the infirmary every time you scratch yourself.

The nurse's hours vary daily according to the doctor's visits. SEE THE NURSE FOR A DOCTOR'S APPOINTMENT.

security

Col. Max McQuown, Director
Frances Falls Building

This office is responsible for the personal safety and the security of the students, faculty, and staff and the security of the physical plant and the grounds of the college. This office implements the traffic-parking control policy — to avoid penalty, parking stickers must be picked up the first week of school. The campus at Rhodes is, on the whole, a safe place to live. However, you should remember that it is located in the Mid-town area of a large city and take appropriate precautions (lock your dorm room, don't walk across campus late at night, etc.) Security offers an escort service if you need to walk across campus at night, just give them a call and they'll be over as soon as possible.

Security also oversees the college's access system to academic buildings. Students enrolled in the natural and political sciences, art courses, and applied music courses may request from their instructor access which allows them to be admitted to the library (and some labs) of the building in which they're studying after hours, when the building has been locked. To take advantage of the access system, go over to the security building and sign-in and the security guard will come over to let you in.

financial aid

Ray Allen, Dean
109 Palmer (3810)
Hours: 8:30-3:00

Financial aid, other than scholarships, is based upon an analysis of the Financial Aid Form submitted annually by the student to the College Scholarship Service. Awards made by the Financial Aid Committee can be appealed by submitting a request to the Committee through Dean Ray Allen. A request for renewal of scholarships and all financial aid must be made in the winter on the prescribed form available in this office.

Student employees are paid every other Friday morning. Checks are placed in the student's mail box in Briggs Student Center. Inquiries concerning job assignment should be directed to Mrs. Shirley Frisch in the Financial Aid office.

development

Don Lineback, Dean
4th Floor Halliburton (3850)

The purpose of the Development Program is to provide service to alumni, parents and other constituent groups and to encourage their voluntary and monetary support of Rhodes College. Gifts from these groups provide scholarships, library books, laboratory equipment, buildings, and endowments. Students help Rhodes by serving as Student Ambassadors and working with the phonathon and Graduate Gifts Committee and through the academic work they do, which receives attention beyond the campus. The sum total of these efforts reduces by about 40% the amount of tuition that would otherwise have to be charged.

chaplain

305 Briggs Student Center

The Chaplain, working closely with the Religion Commissioners of the SGA, coordinates the many religious activities on campus and is always available to counsel you about your religious and personal concerns. For those interested, a non-denominational, non-mandatory chapel service is given Tuesday mornings at 10:05 in East Lounge of the Student Center.

center for counseling and career services

Libby Robertson, Ph.D., Personal Counselor
Tina Fockler, M.S., Placement Officer
301 Briggs Student Center (3800)

The Center for Counseling and Career Services staff are available by appointment to assist you with a variety of needs or concerns.

The Personal Counselor will provide you with an atmosphere where personal concerns of any type may be examined and discussed freely and confidentially in order to increase the chances of adequate resolution. Dr. Robertson is experienced at working with students on many issues such as stress management, assertiveness training, study skills, interpersonal and emotional concerns. No stigma should be attached to going to the Counseling Center; there comes a time when everyone needs someone to talk to, to listen, or merely just an impartial third party to bounce ideas off of and Dr. Robertson is there to help.

The Placement Officer looks forward to helping you pursue your career goals. Whether you are considering immediate employment or graduate or professional school, the staff is ready and willing to be of assistance to you. A variety of programs and services has been developed to assist you in determining and implementing your career and educational strategies. Through personalized, individual counseling, Vocational Testing, job search advising, and a series of job search seminars (e.g. resume writing, interview skills, job outlook, current salary offerings) individuals using the Career Services will develop a better understanding of themselves and the opportunities that await them upon graduation from Rhodes.

In addition, the Placement Service houses a Career Information and Employment Library to help you in obtaining information about occupations and employment options. Included in the library are a number of self-help materials developed by the staff. Current lists of full-time, part-time, and summer employment opportunities are available for your review.

Students wishing to use the Placement Service to interview with various employers for summer or permanent employment must establish a placement credential file prior to interviewing. Please check with the Placement Officer about how to set up your credentials file.

the burrow library

Lynne Blair, Director

Hours: Monday-Thursday 8:00 a.m.-midnight
Friday 8:00 a.m.-9 p.m.
Saturday 1:00 p.m.-5 p.m.
Sunday 1:00 p.m.-midnight

These hours will be extended during exams. Watch for notices announcing exam hours on the entrance doors.

The library has begun a period of renovation. During the summer the target area was the basement, so there will be changes and differences from last year. We will provide you with guidance—ask at the Circulation or Information Desks.

Areas for study in the library include the Reference Room and lots of carrels in the stacks. You may find one of these quieter and less distracting than your dorms.

There is a formal checkout system, but one initiated for your convenience. The first time you use the library you must present your Rhodes I.D. to have a library card issued to you—the number will be put on the back of your I.D. Thereafter, you may check out materials merely by telling your name and library card number. A word of CAUTION: the library cannot look up your number for you, so be sure you memorize it or have your I.D. with you.

As you enter the library, the Circulation Desk is in front of you. You will find RESERVE BOOKS here. Some reserves are checked out for two hours during the day, with an overnight checkout at 4:30 p.m., due the next morning at 10:30 a.m. Overdue fines are 25 cents for the first hour and 5 cents for each additional hour. Some faculty members prefer that their reserves remain a two hour checkout at all times. These are designated as LIBRARY USE ONLY (thus may not be taken overnight). Be sure you know which you are checking out, since there is a steep fine for removing L.U.O.'s—\$1.00 for just taking out of the library, with additional \$1.00 fines for being overdue.

PERIODICALS are always LIBRARY USE ONLY (fines are the same as for L.U.O. reserves). Unbound volumes are at the Circulation Desk, bound volumes are in the basement, and some volumes are on microfilm or microfiche.

There is a PHOTOCOPIER and a MICROFILM READER/PRINTER for making copies of periodicals or other materials which you want to reproduce. A CHANGE MACHINE is provided for your convenience (the library does not provide change other than from the machine, but the Cashier does).

MUSIC RECORDINGS for your classes are in Hassell Hall. Some other music selections and SPOKEN RECORDINGS (plays, poetry, speeches) may be checked out at the Circulation Desk. These may be used with the stereos in the library (ask for their location at the Desk). There are also different types of cassette tapes available for your work or pleasure.

Adjacent to the Circulation Desk is the INFORMATION SERVICES DESK. In addition to regular reference information, DIALOG online search produces customized bibliographies for your research topics. You will need to make an appointment for this.

Additional libraries on campus are in the Chemistry and Math buildings. These libraries contain abstracts and periodicals peculiar to those departments.

Other facilities in Memphis which you may use are the Memphis Public and Shelby County Library (located at McLean and Peabody) and the libraries of Memphis State, Christian Brothers College, Memphis College of Arts, LeMoyne-

Owen College, Harding Graduate School, Memphis Theological Seminary and Mid-America and Mid-South Bible Colleges. A worthy note of caution: you must be clear not only in our library, but in all these libraries to validate each term!

MSU Library Hours: Monday-Thursday 7:45 a.m.-midnight
Friday 7:45 a.m.-10 p.m.
Saturday 9 a.m.-6 p.m.
Sunday 1 p.m.-midnight

refectory

Chuck Carter, Director
Burrow Refectory (3541)

Hours:	M-F	S-S
Hot Breakfast	7:00-9:15	8:00-9:00
Continental Breakfast	9:00-10:30	9:00-10:30
Lunch	11:30-1:30	12:00-1:15
Supper	4:45-6:30	5:00-6:00

The Catherine Burrow Refectory is the College dining hall. ("Refectory" is a medieval term applied to the dining halls of monasteries and convents.)

Affectionately known as "The Rat", this is the place where minds and stomachs meet.

ARA will continue a seventh year as the food service at Rhodes. In the past they have planned such features as Thursday's Buffet Night, holiday meals, ice cream treats, and late night study breakfasts at exam time. A student food committee works with the food service to air your comments and suggestions, and to try to bring you what you want.

The Honor Code applies to the refectory. Non-boarding students can purchase discount meal tickets at the cashier's table. It is also against the Honor Code to take utensils, dishware or food out of the refectory for later use.

physical plant

E. Dudley Howe, Director
Austin Building (3870)

The Physical Plant Department is responsible for maintaining all physical and mechanical systems, housekeeping, grounds maintenance, and the operation of college owned vehicles. Requests for dormitory services must be made on forms provided by your resident advisor. All other requests should be directed to the Physical Plant Office.

student mail

The student mailroom is located in the lower level of the Student Center. A student mailbox is provided for all regular and part-time students. (Irregular students should stand with open arms at the foot of the laundry chute in the basement of Voorhies). The cost of the mailbox is included in tuition. Mailbox keys will be distributed at the same time room keys are. Use your *complete* name on all correspondence. (Although the mailroom employees are superior in intelligence, they have no idea who "Charlie Brown," "Madonna," or "Sweet Cheeks" is.) Town students are encouraged to use their mailbox since intra-campus messages are sent via these mailboxes.

Mail is received Monday through Saturday and distributed to the student boxes by 10:00 a.m. Parcels too large for the mailboxes are located in the work area of the mailroom. Package notices are used to notify you of a package (clever how it works that way, isn't it?) Packages sent by United Parcel Service (UPS) are delivered to the Cashier's office in Palmer Hall, and a notice is made and put up in the student mailboxes.

grill

The Grill gives board students a choice either to eat in the "Rat" or go fast food in the Grill. Each board student has a \$2.75 credit towards his or her lunch if they choose to eat in the Grill. Honor code applies to the Grill. The Grill is operated by ARA who employs all student staff.

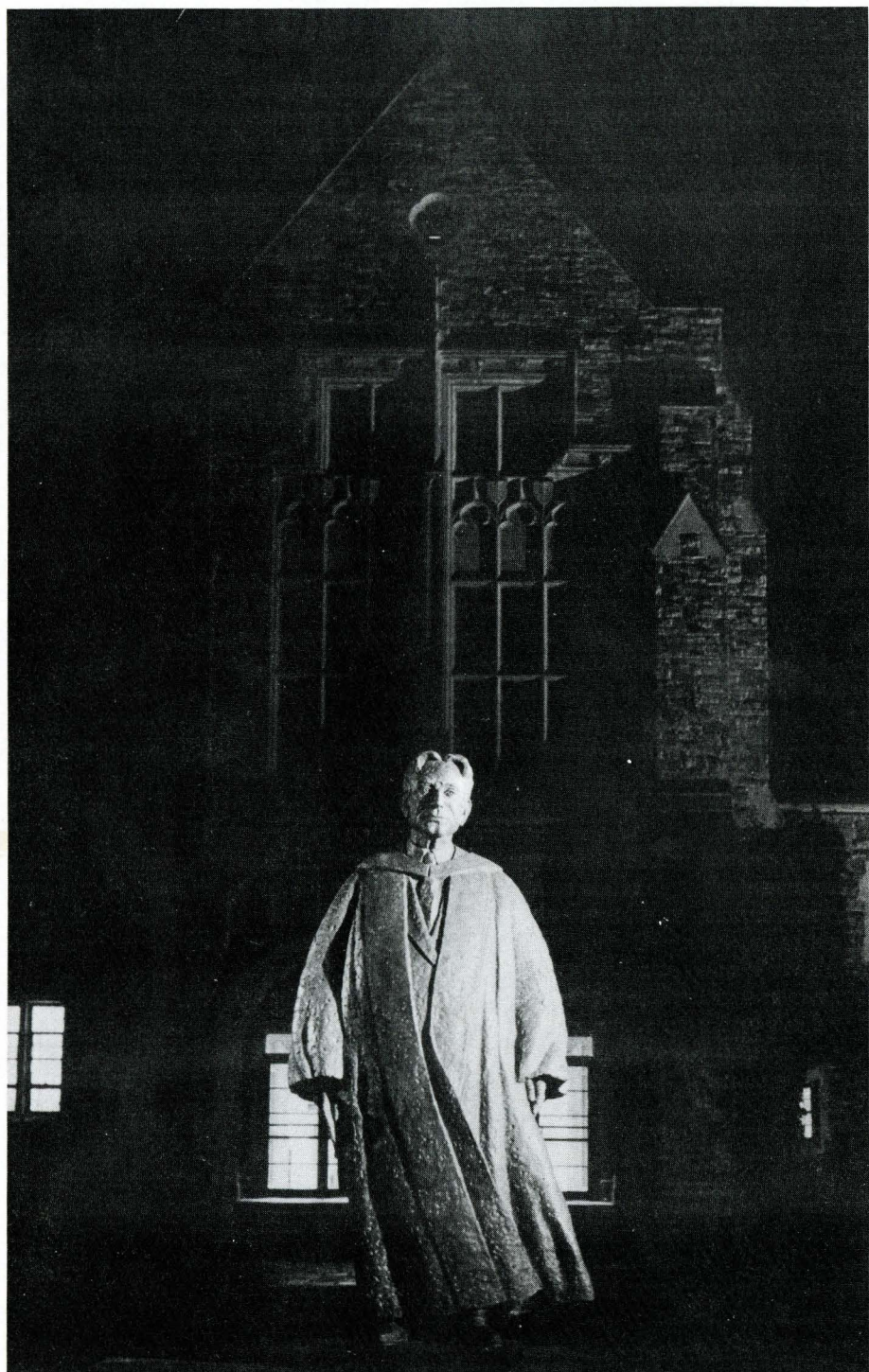
Hours: Monday-Thursday	9:30 a.m.-2:00 p.m. & 6:00 p.m.-midnight
Friday	8:00-midnight
Saturday	8:00-midnight
Sunday	6:00-midnight

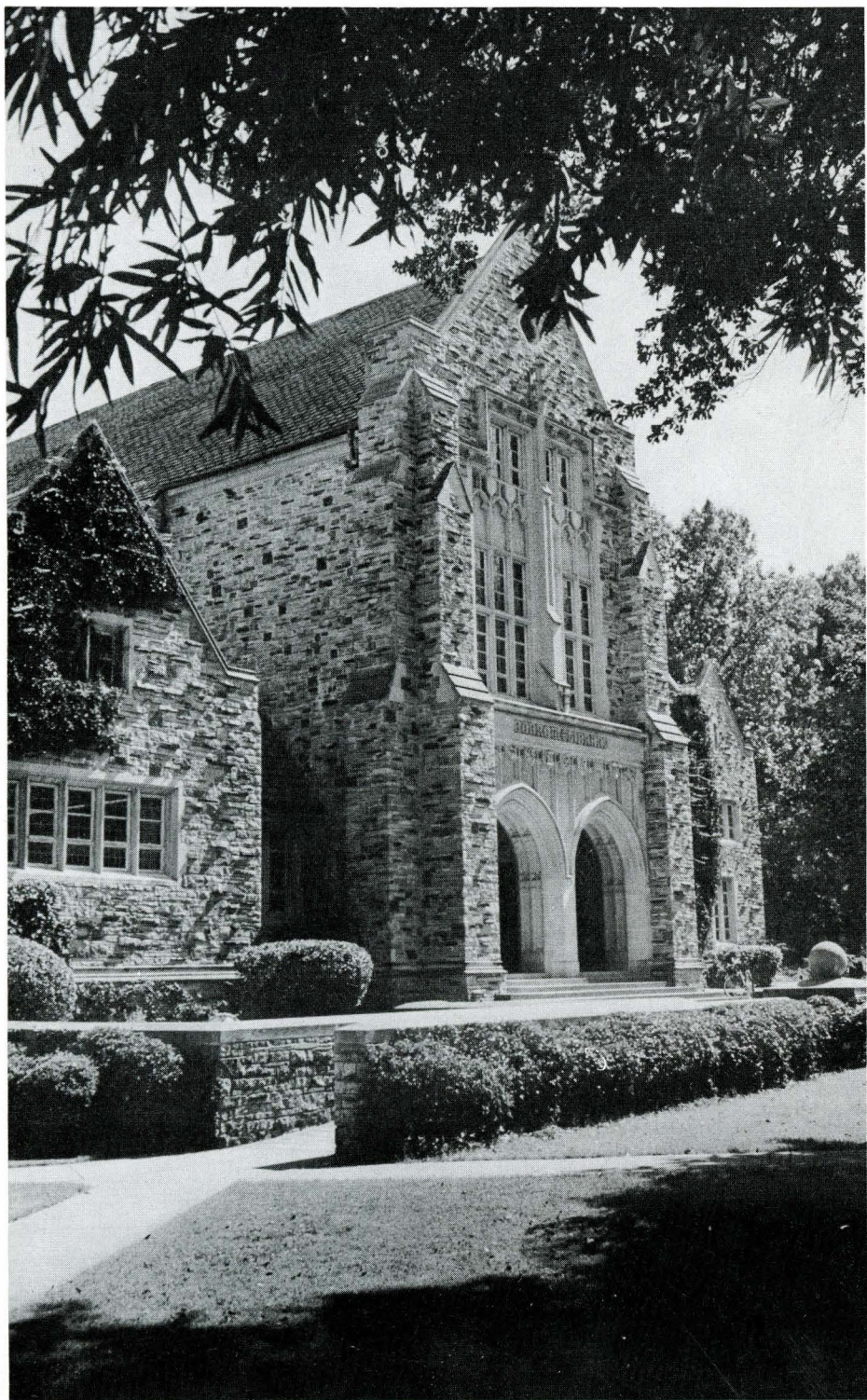
In addition, the Social Commission, a group of students, works to make the Student Center a lively place for students to gather. With a small budget, the group sponsors a wide variety of activities for the student body: bands, movies, and a student center weekend in the spring. General membership comes from participation.

dorms

There are two types of dorms on the Rhodes campus; "open" refers to no restrictions or curfew hours for opposite sex, "closed" refers to restricted visitation times (off limits from 12:00 midnight-8:00 a.m.)

Coin-operated washing machines and vending machines are located in almost all dorms. Draperies and carpeting are available in Williford only. Some beds in most dorms are oversized, so it might be better to wait before you buy your fitted sheets. Pets are restricted to the aquarium or cage type. To answer your 482 other questions, you will be assigned a student counselor soon, and he/she will be able to answer your questions by personal letter. Also please note that all dorms will be closed during Christmas, Spring Break, and part of the summer. So make plans unless you intend to sleep on the roof.





CALENDAR

TERM I

Orientation	Sept. 7-10
Registration	Sept. 10
Classes Begin	Sept. 11
Fall Recess	Oct. 17-22
Pre-Registration for Term II	Nov. 24
Thanksgiving Recess	Nov. 26-Dec. 1
Reading Day	Dec. 11
Final Exams	Dec. 12-17
End of Term I	Dec. 17

TERM II

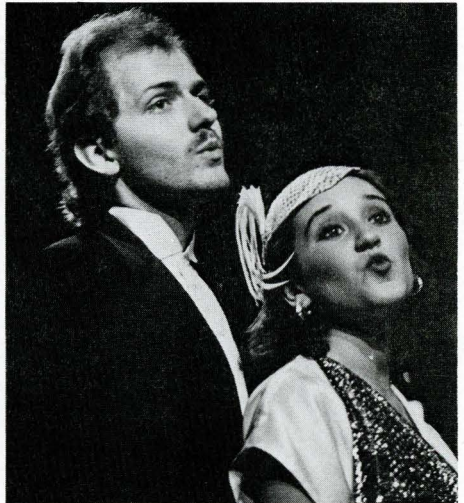
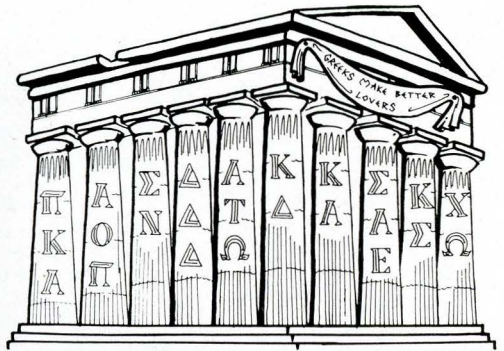
Registration-Validation Day	Jan. 6
Classes Begin	Jan. 7
Winter Recess	Feb. 18-23
Pre-Registration for Term III	Mar. 6
Reading Day	Apr. 3
Final Exams	Apr. 4-9
End of Term II	Apr. 9

TERM III

Registration-Validation Day	Apr. 20
Classes Begin	Apr. 20
Pre-Registration for Sept. '87	May 15
Reading Day	May 30
Final Exams	June 1-3
Baccalaureate Services	June 5
Graduation Exercises	June 6

CAMPUS LIFE

There are many ways for the student to get involved in Rhodes clubs and activities. No experience is usually necessary, just an active interest to get involved. For the politically minded, there is the Student Government Association, Social Regulations Council, Honor Council, and the Committee for Political Awareness. The Kinney program offers students a chance to serve the world beyond the Rhodes community. Publications offer practical experience from layout to writing to editing and much more. And the list goes on and on . . . As you read about the clubs that follow, keep in mind that they're student run and student supported. So don't be afraid to talk to the people listed below if you have an interest. Some of the most valuable part of your Rhodes education will be spent out of class, so seize the chances and opportunities listed below.



resident advisors

These people are a vital part of communal living. They form a liaison between you and the administration. If you have any problems—room changes, ants, maintenance, or personal—go to them: they are trained to help. An R.A. will be on duty in your dorm every night from 10:00 p.m. until morning, so if you have any problems or questions, complaints or suggestions at these times, you will know where to find them.

RA's 1986-1987

	ROOM	PHONE
WILLIFORD		
Gayle McFarland	100	3400
Christie Green	214	3432
Ricci Hellman	314	3458
VOORHIES		
Tricia Pennington	100	3301
BELLINGRATH		
Sue Popovitch	100	3110
Judy Dangler	209	3130
UNIVERSITY		
Betsy Hamilton	1-A	3167
EAST		
Laura Miller	103	3008
Heidi Schultz	314	3546
TREZEVANT		
Diane Morrison	108	3258
Mindy Gard	222	3276
STEWART		
David DuBard	110	3533
Steve Beckham	225	3529
GLASSELL		
Mike Mangrum	114	3022
Keith Kelly	212	3047
Mark Edge	319	3075
ROBB/WHITE/ELLETT		
Michael Cooper	101 White	3373
Ron Kuhn	205 Ellett	3487
TOWNSEND		
Eric Aft	100	3200
Lance Baker	205	3215
Tom Manning	314	3238
NEW DORM		
Wright Bates	108	3012
Jimmy Short	311	3473

student government association

302 Briggs Student Center

The main purpose of the SGA is to promote an exchange of ideas among students, faculty, and administration. With a total of 24 representatives—4 class, 4 at large, 2 town students, 10 dormitory and 4 officers, the SGA appoints students to serve on Faculty and Board of Trustees committees, oversees the allocation of SGA funds, and involves itself in most facets of college life. If you are interested, get involved! Many of the representative positions will be elected in the fall. The SGA also sponsors College Bowl, sponsors forums on topics of interest to students, and coordinates the Food Committee which works with the Refectory to ensure that student opinions and problems are dealt with.

- PresidentDavid Lusk
- Vice-President.....David DuBard
- TreasurerDavid Peterson
- SecretaryBetsy Hamilton
- Senior Class RepresentativesLynn Lawson, Kitty Riley
- Junior Class RepresentativesAllen Bacon, Kris Dwelle
- Sophomore Class RepresentativesLucinda Lyon, Sally Rose
- Freshman Class Representatives2 reps to be elected
- Board of Trustees Representatives ...Michael Cooper, Brian Mott, Wendy Tallent

All other representatives are elected in the fall.

The SGA also allocates jobs by commissions, each commissioner creating and carrying out projects in his or her area. Explained below are the six commissions. They depend on student support, therefore seek out your area of interest and contact the commissioner.

ATHLETICS COMMISSION:

Commissioners: Wright Bates, Elbert Hampton

Serving as a link between the student and the athletic department, this commission's main concern is to make the students aware of the athletic opportunities at Rhodes. Be it varsity, intramural or individual sports, all questions can be answered through this commission.

SOCIAL COMMISSION

Commissioner: Maggie Hu

This commission hopes to draw upon the various art and talent groups on campus as well as bring in musical (jazz, new wave, rock, country, etc.) groups from elsewhere. Some traditional attractions include Homecoming Dance, Uncommon House and popular and classic feature-length movies.

WELFARE COMMISSION

Commissioners: Andy Robinson, Gretchen Greiner

This commission is concerned with anything having to do with the improvement and furtherance of the educational experience. It initiates discussions, lectures, student and faculty welfare, and unity at Rhodes. This commission also sponsors rides to major transportation centers (the Memphis Airport, Greyhound and Trailways Bus stations, the entry ramp to Interstate 40) before and after holidays.

RELIGION COMMISSION

Commissioners: Mark Wells, Evelyn Edwards

This commission will work closely with the chaplain to promote spiritual growth and religious activity. It plans to support groups such as Intervarsity Christian Fellowship, Evergreen College Fellowship, and The Fellowship of Christian Students. During your orientation you'll hear all about these. It will organize rides to the area churches and have weekly campus worship services. It also plans to have speakers, forums, and discussion groups to cover topics pertinent to the college student today and his/her faith. Any suggestions are welcomed!

ELECTIONS COMMISSION:

Commissioner: Julia Mitchener

This commission handles the details of every student body election. Elections are announced two weeks in advance and petitions from the commissioner are available at that time. Voting is by secret ballot; the Honor Code applies.

PUBLICATIONS BOARD (PUB BOARD)

Commissioner: Karen Cagle

The opportunities available to you in publications at Rhodes are nearly unlimited. The Publications Board is the governing body over all publications. It selects new editors each spring, allocates money and settles conflicts in editorial policy. Members include all editors, class representatives (to be elected) and the commissioner.

There are currently 6 student publications at Rhodes meeting a variety of interests and needs. Students are entrusted with maintaining a balance between freedom of expression and responsible journalism. All students are encouraged to work on all aspects of publication—writing, layout design, art, etc. Quality publications thrive when enthusiastic students are involved.

Faces (*Mark Edge, ed.*) is the directory of pictures, phone numbers, and addresses of students, faculty and administration. It is an invaluable aid!

The Lynx (*Steve Harmon, ed.*) is the Rhodes yearbook. It is a creative publication that attempts to give an overall picture of the life at Rhodes during that year. Watch for signs. (Thunderbolts from heaven, etc.)

The Sou'Wester (*Alan Harris, ed.*) is the student newspaper which covers student activities, current issues and articles of interest to the community. Published weekly.

Currents (*Christine Tiede, Luke Lampton, ed.*) is the campus literary, scholarly and creative arts magazine. All the entries are original student and faculty works.

The Handbook (*Heather Hicks, ed.*) Obviously a prestigious publication.

social regulations council

As a member of a community of residents, you are expected to maintain a certain degree of respect for both your fellow students and the campus facilities. The Social Regulations Council (SRC) is designed to make community life at Rhodes as harmonious as possible, stressing an individual's personal responsibility rather than strict rules and guidelines. However, there are basic courtesies expected of all students at Rhodes and the SRC will, upon complaints by individuals, investigate and take judiciary action whenever necessary.

- President Lauren Wellford
- Senior Class Representatives Alison Abernathy, Alice McCarthy
- Junior Class Representatives Katie Bright, Peter Emanuel
- Sophomore Class Representatives Julianne Johnson, Cary Tynes
- Freshman Class Representatives 2 to be elected

honor council

"I have neither given nor received aid on this test, assignment, or examination."

The freedoms and responsibilities of the Honor System are shared by all members of the Rhodes community. Far beyond the visible benefits such as unproctored exams, the access system, and take-home tests, the Honor Code demonstrates a commitment to truth and value by all Rhodes students and provides an atmosphere of honesty and respect that is unique to Rhodes.

The Honor Council, composed of an elected President, Vice President, and fourteen class representatives, has a positive, judicial role within the system. Its basic responsibility is to foster and protect a spirit of honor at Rhodes. It carries out this responsibility by educating the community and by acting as a court in a case of alleged dishonesty.

The Honor System applies to all phases of campus life. The four basic violations of the Code are cheating, stealing, lying in official matters, and failure to report a violation. If a person is found guilty, the Council imposes a penalty that is designed to uphold the system and also be beneficial to the individual.

Each student is furnished with an Honor Council Handbook (constitution) which should be read carefully and saved for reference. The freshman class will elect two representatives, one male and one female during first term. The Council is made up of Rhodes students who are concerned and interested. Please feel free to ask any members of the Council questions which may come up.

- President Ira Jackson
- Vice-President Melinda Hall
- Secretary Allyson Hooper
- Senior Class Female Reps Susan Adams, Melanie Swift
- Senior Class Male Reps Dave Oxley, Lance Baker
- Junior Class Female Reps Becky Womeldorf
- Junior Class Male Reps Chris Brown, Alan Ostner
- Sophomore Class Female Reps Catherine Bolger, Kara Babin
- Sophomore Class Male Reps Kurt Low, Charles Carrico
- Freshman Class Female Rep 1 to be elected
- Freshman Class Male Rep 1 to be elected

committee for political awareness

The Committee for Political Awareness provides a form for debate and education on current political issues. Organized by students, the CPA is open to all Rhodes students, faculty, staff, and alumni. Past programs have ranged everywhere from local public service groups to the nuclear arms race. In addition, the CPA sponsors educational campus workshops and conferences. Weekly meetings and forums are often given by students, so plan on sharing your knowledge with the CPA and educating yourself about numerous political issues.

black student association

Students of all races are encouraged to join the Black Students Association (BSA). The idea behind the organization is to make the integration of the races a more attainable goal. The primary function of the BSA is to foster multilines of communication among the Rhodes community, organizations of other colleges, and the Memphis community. Throughout the year the BSA stimulates the Rhodes campus by providing innovative speakers, social activities, and a wide range of events that promote interaction within the Rhodes society.

academics

Your best plan is to "know your catalog," it will save you time and worry. (I recommend the L.L. Bean Spring Catalog.) On pages 34-38 of your 1986-87 catalog are the requirements for graduation and the academic regulations of the college. Read it carefully. Students are responsible for the satisfactory completion of all requirements for graduation.

A Rhodes education is designed with individual students in mind. It encourages each student to explore and grow and take an active part in developing his or her college education. This, of course, places a responsibility on the student to take the initiative in exploring beyond traditional catalogue offerings, as vital as they are.

Special academic avenues are available and should be considered as viable alternatives in a liberal arts setting. These include: Interdisciplinary Majors; Internships; Tutorials; Directed Inquiries; Honors Projects; Undergraduate Research; Washington Semester; British Studies at Oxford; Rhodes Abroad; and Rhodes at New York.

During orientation you will find out who your colloquium leader will be: he/she will serve as your faculty advisor. This means that he/she will assist you in planning the courses you want to take and are required to have before you leave Rhodes. Fellow students (upperclassmen) are also a very valuable source of information, as are professors and department chairmen, who can best tell you about their courses, their department and what kind of career options are available. Get to know your professors! If there is something, anything, that you do not understand or want to know more about, then ask them. They are interested.

If you are interested in a professional or graduate school program, then you should see the appropriate advisor when planning out your schedule.

the arts

MUSICAL ACTIVITIES:

The Rhodes College Singers perform music from various periods of choral literature. The choir appears at several campus and city functions during the year, travels to churches and schools on a tour of the Mid-South each spring, and engages in foreign tour every third year.

Music students, under the guidance of the faculty, participate in the activities of such professional groups as the National Association of Teachers of Singing, the American Guild of Organists, Pi Kappa Lambda, and local performing groups.

Various ensemblé opportunities are available as provided in the curriculum of the Music Department. A student pep band plays at college athletic events during the year. Additionally, students may receive private instruction in piano, organ, voice, guitar, flute, clarinet, violin, viola, cello, and harp. There are also faculty and student recitals, the faculty concert series, and special guest performances such as a recent performing jazz artists series.

Hassell Hall, the most recent addition to the campus, houses practice rooms, studios, a music library, and a recital hall. Whether or not a student is a music major, Hassell Hall is available for individual practice and for ensemble rehearsals.

THEATRE ACTIVITIES:

Rhodes College's McCoy Theatre provides excellent opportunities for students interested in any aspect of theatre from acting to technical support. The theatre facility is unique in the Mid-South, offering space that can be configured in a number of ways to accommodate a variety of set designs and arrangements for seating. The theatre is an integral part of the Department of Theatre and Media Arts, and a full complement of courses is available in this area under capable instructors.

There are two series offered at the McCoy: the Subscription Series, and Studio Series. The Studio Series is designed for the student performer and director. The Subscription Series brings local actors, directors, musicians, and Rhodes students together in productions throughout the year. The inaugural production in the theatre was *CANDIDE*, selected as one of the best theatrical productions in Memphis in 1982. In the first full year there were five productions including *CARNIVAL* and *THE TEMPEST*. The McCoy has brought several productions to the Mid-South for the first time: *SWEENEY TODD*, *THE GONDOLIERS*, *BEYOND THERAPY*, and *NICHOLAS NICKLEBY*.

One of the special events which will find its permanent home in the theatre is the much-lauded McCoy Visiting Artist Series. This series brings nationally and internationally known performing artists to campus not only to perform, but to visit with students, hold discussion/lecture sessions and conduct workshops. Among those who have shared their time and talent with Rhodes students are opera's dramatic soprano Nancy Tatum; noted dancer and choreographer Agnes de Mille; Swedish baritone Hakan Hagegard; The New Shakespeare Company of San Francisco; and actress Pat Carroll in her award-winning one-woman play "Gertrude Stein Gertrude Stein Gertrude Stein," and New York director, Gavin Cameron-Webb.

kinney program

Pat Lovelace

Office: 306 Briggs Student Center

The Kinney Program is something very special to Rhodes. It is a student-coordinated and staffed volunteer community service organization that involves about one-fourth of all students who attend Rhodes. On any given day, Kinney volunteers can be found visiting elderly shut-ins, taking a "little brother" to the zoo, or recording books for the blind. These students are bound by a common desire to help others—to look beyond personal needs and wants—and the incentive to channel that motivation into a regular and responsible program of community service.

In addition to the satisfaction that comes from such work, the Kinney Program also gives students an opportunity to sample career fields in which they might be interested or to gain valuable on-the-job training. There will be first and second term sign-ups for interested students. Always feel free to walk in the office and volunteer for a service or work project, for no appointment is necessary. Kinney provides a vital service to the Memphis Community and also to the individual desiring to help. Do consider working with the Kinney Program—not only will you be helping others a great deal, but the satisfaction and growth will benefit you substantially.

wlyx

Karen Luvaas, Director

Briggs Student Center, Third Floor

At 89.3 on the FM dial, WLYX is Rhodes' own student-operated radio station. The 3500 watt signal reaches almost all parts of Shelby County.

WLYX offers primarily jazz, classical and rock programming. On weekends, the station also plays bluegrass and folk music, and inspirational programs.

Student participation is encouraged in all aspects of programming, production, and broadcasting. Interested persons should come by the studios on the third floor of the Student Center. No experience is required or even necessary, just a desire to learn.

townies

Commuting students are just as much a part of Rhodes as the "live-ins," but you need to make an effort to keep from falling into the habit of going straight home after class. An occasional meal in the refectory or participation in some of the evening events will keep you in touch with the Rhodes community.

There are lockers available in the basement of the Student Center—check with the Dean of Students Office. Town students are assigned mailboxes also; these will often contain important on-campus announcements and notices, so check them regularly. The Student Center has large, comfortable couches and is a traditional place to gather as you are waiting for your next class.

athletics

Gymnasium (3940)

Gym Hours: Monday-Thursday	8:30 a.m.-10:00 p.m.
Friday	8:30 a.m.- 5:00 p.m.
Saturday	10:00 a.m.- 5:00 p.m.
Sunday	1:00 p.m.- 5:00 p.m.
Pool Hours: Monday-Friday	7:00 a.m.- 8:00 a.m.
	1:00 p.m.- 6:00 p.m.
Saturday	10:00 a.m.- 6:00 p.m.
Sunday	1:00 p.m.- 6:00 p.m.

Rhodes offers varsity participation for women in soccer, cross country, tennis, basketball, and volleyball. For men Rhodes offers football, baseball, basketball, soccer, tennis, golf, track, and cross country.

DEPARTMENT OF ATHLETICS STAFF:

Director of Athletics	Chuck Gordon
Football	Mike Clary
Men's Soccer	Sepp Huber
Women's Basketball, Women's Tennis	Sarah Hatgas
Baseball, Assistant Football	Gordon Ellingsworth
Golf, Assistant Football	Leland Smith
Men's Basketball	Herb Hilgeman
Assistant Football, Assistant Baseball	Eric Hooper
Volleyball, Women's Soccer	Tricia Homstad
Cross Country	Mike Jones
Athletic Trainer	Roger Stahle
Director of Intramurals	TBA

All members of the staff are willing to discuss your participation in sports of any type. You do not have to be a varsity athlete or enroll in a physical education class to take advantage of their expertise. Because members of the staff have busy schedules, appointments are encouraged although not necessary.

Over half of the campus participates in the intramural program. The season will open with intramural flagball, followed by basketball, volleyball, and softball. Teams can be formed by anyone; members of a commons, a dorm, a fraternity/sorority or merely a group of friends. Club sports are offered in lacrosse, rugby and field hockey.

All students can enjoy the use of Rhodes athletic facilities. In addition to the gym and regular fields, there are tennis courts, racquetball courts, an outdoor swimming pool, a cross country layout around campus, and a weight room. Check the schedules for various facilities.

For those who choose to pursue less strenuous activities, frisbee golf is also a popular pastime. Ask an upperclassman about the course layout. A sport unique to Rhodes is whiteball; just hang around the steps between the refectory and White to find out what it is all about. Camping equipment and a bicycle built for two are also available from the Student Center (assembly required).

All staff members are available to the Rhodes community to help in working out exercise schedules, weight lifting programs, health tips, and life time leisure activities.

The trainer is also available for rehabilitation of injuries, sports related or otherwise, upon referral from the Infirmary.

dilemma

Operated exclusively by Rhodes students and financed by private contributions, this symposium features an intellectually stimulating weekend of guest speakers and seminars. Rhodes presents Dilemma to the college and Memphis communities. The symposium will be held this winter, so watch for your chance to get involved.

international house

Veronique Heinrich and Tom Horton, Student Coordinators

The International House is two residence halls for students who are interested in foreign languages and cultures. It consists of two separate sections, male and female, each of which houses speakers of French, Spanish, German, and Arabic. This special living arrangement was designed to provide students with an opportunity to practice their language skills with native speakers and other students, to stimulate international awareness on campus, and to assist foreign students during their years at Rhodes. Residents of the International House also sponsors weekly language tables at mealtimes where the principal language for conversation will be either French, Spanish, German, or Arabic.

greek life

About fifty percent of the campus belongs to one of the Greek organizations on campus. Rush takes place in the fall, with ample time for the prospective pledge to become acquainted with the various groups. The Greek system offers a chance for you to become acquainted with a diverse group of friends that you might otherwise not come in contact with.

Six national fraternities and four national sororities have active chapters at Rhodes. The fraternities, listed in order of their establishment here, are as follows: Pi Kappa Alpha, Alpha Tau Omega, Sigma Alpha Epsilon, Kappa Sigma, Kappa Alpha, and Sigma Nu. The sororities, similarly listed in order of establishment at Rhodes, include the following: Chi Omega, Kappa Delta, Alpha Omicron Pi, and Delta Delta Delta. These national fraternities and sororities have attractive houses on the campus, which are used for meetings and social events.

To be eligible for initiation, a pledge must have passed a minimum of nine hours at Rhodes with a grade-point average of 1.666 or better in the preceding term. Written certification by the Registrar and the Cashier that the student has met the scholarship requirements and has settled all college accounts is necessary for initiation.

The Inter-Fraternity Council for the fraternities (Sann Gossum, president) and the Panhellenic Council (Audrey Weston, president) for the sororities made up of two representatives from each of the groups, and in cooperation with the Dean of Students, are in charge of the social activities of the groups and all matters of interfraternity relations.

local banking

Listed below are a few of the banks close to Rhodes. Each requires two forms of identification to open a checking account; a student ID is usually accepted. The student services are as follows:

- FIRST TENNESSEE**, 2076 Union Phone 523-4875
 No minimum balance, 25¢ charge per check, 24-hour banking machine.
- HOME FEDERAL**, 1940 Madison Phone 761-5600
 \$200 minimum, \$10 service charge if balance below \$300, 24-hour banking machine.
- UNION PLANTERS NATIONAL BANK**, 2053 Union Phone 523-6211
 No minimum balance, 25¢ charge per check, plus \$1.50 service charge per month.
- NATIONAL BANK OF COMMERCE**, 2451 Summer Phone 523-3577
 \$400 minimum opening balance, \$7 service charge if balance between \$200 and \$400; no service charge if balance is above \$600.

dining in Memphis

Just as the campus may crowd in on you at times, there comes a night when you just get to the line in the refectory and your stomach is just unable to handle the sight of Polish Sausage Sandwiches, or your parents are in town and you just don't want to call Mom and Dad at the hotel and say, "Hey, guys, how 'bout dressing up for a nice meal in the refectory?" So what we've done below is get together a family comprehensive listing of most of the restaurants that Rhodes students seem to frequent. For more information, just ask an upperclassman or let your fingers do the walking. Bon Appetit!

KEY:

- \$\$\$ \$** Expensive—Take your parents there
\$\$\$ Not as expensive—Good place for a nice date
\$\$ It won't impress her, but you may go out again, if you're real nice
C Marginal

YOUNG AND FUN...

- | | |
|-------------------------|----------|
| Friday's | \$ \$ |
| Bombay Bicycle Club | \$ \$ \$ |
| Ruby Tuesday's | \$ \$ \$ |
| Paulette's | \$ \$ \$ |
| Huey's | \$ \$ |
| Dux | \$ \$ \$ |
| Midway Cafe | \$ \$ |
| Ninety-First Bomb Group | \$ \$ \$ |
| The Butcher Shop | \$ \$ \$ |

ORIENTAL...

- | | |
|------------------------------|----------|
| Shanghai's | \$ \$ \$ |
| Formosa | \$ \$ \$ |
| NamKing's Chinese Restaurant | \$ \$ \$ |
| Kubla Khan's | \$ \$ \$ |
| Peking Palace | \$ \$ |

ITALIAN...

- | | |
|------------|----------|
| Colletta's | \$ \$ |
| Grisanti's | \$ \$ \$ |
| Palm Court | \$ \$ \$ |
| Pizza Hut | C |
| Pierotti's | \$ \$ |

MEXICAN...

Gonzales and Gertrude's	\$ \$ - \$ \$ \$
Panchos	C- \$ \$
El Chico's	\$ \$

VIEWS OF THE RIVER...

River Terrace	\$ \$ \$
Number One Beale Street	\$ \$ \$
The Pier	\$ \$ \$
Captain Bilbo's	\$ \$ \$

REAL NICE...

Justine's	\$ \$ \$ \$
Four Flames	\$ \$ \$ \$
Carriage House	\$ \$ \$ \$
La Tourelle	\$ \$ \$ \$
Chez Phillippe	\$ \$ \$ \$
Cafe St. Clair	\$ \$ \$ \$

SEAFOOD...

Captain Bilbo's	\$ \$ \$
Pappy and Jimmy's	\$ \$
The Lobster Feast	\$ \$
The Hungry Fisherman	\$ \$

OPEN 24-HOURS...

Denny's
Krystal's
Steak 'n Egg

SUNDAY BRUNCH...

Bombay Bicycle Club
Hasting's Place
Number One Beale
Paulette's
The Peabody

OTHER GREAT BREAKFAST SPOTS...

Danver's All-You-Can-Eat
Ferguson's (A Memphis Tradition)
Shoney's All-You-Can-Eat

rhodes after hours

Below is a list of the various dives, holes in the walls, etc. that Rhodes students frequent. You should try them all but be prepared, open-minded, and have an Alka-Seltzer in hand (upperclassmen will tell you where to find any of these nightspots).

- **PAT'S PIZZA** — The most famous and wonderful of all. Great cheesburgers. After four years, you'll think "Mrs. Pat" is your mom. Avoid the pizza, but play "From Graceland to the Promised Land" and it'll bring tears to your eyes.
- **ALEX'S** — Close to school, with "Rocky Burgers" and oldies.
- **POPLAR LOUNGE** — A classic only recently expanded.
- **BROWN JUG** — Not a nightspot but will cash any Rhodes student's check so you can get to one.
- **P&H CAFE** — A mellow place for artsy types especially.
- **ANTENNA CLUB** — New wave nightspot.
- **RUBY TUESDAY'S** — Not a dive, but two-for-one drinks every night after eleven ain't bad.
- **LAST RESORT** — Any one of the 17 Krystals, 17 McDonalds, 16 Wendy's, or the 2000 Fried Chicken places in Greater Memphis.

alcohol policy

All members of the College community are responsible for making decisions about their behavior within the context of Tennessee law and the College's principles and regulations. In an attempt to make the student aware of Tennessee law concerning the use of alcoholic beverages, the following summary of the applicable law is provided. This summary is not intended to be a restatement of the law nor a summary of all of the law relating to alcoholic beverages, but it is provided to advise the student of some state statutes which may affect the student and his or her use of alcoholic beverages.

STATE STATUTES:

Under Tennessee law, it is illegal:

1. For any person to sell, furnish, or give an alcoholic beverage to any person under the age of 21 (except as provided in paragraph 2);
2. For any person under the age of 21 to purchase, receive, or possess alcoholic beverages, unless such person was born before August 1, 1965, in which event such person shall be of legal age to purchase, consume, or possess alcoholic beverages.
3. For any person to consume or open for consumption any alcoholic beverages in any establishment licensed to sell such beverages between 3:00 a.m.-7:00 a.m.
4. For any person to make a false statement to the effect that he or she is 21 years of age or older for the purpose of obtaining alcoholic beverages.
5. For any person to sell or furnish any alcoholic beverages to any person who is known to be visibly intoxicated or to any person who is known to habitually drink alcoholic beverages to excess, or to any person who is known to be a habitual user of narcotics or other habit-forming drugs.
6. For any person to operate a motor vehicle under the influence of alcoholic beverages or drugs and be found with .10 percent or more alcohol or drugs in his or her blood system.

Violators of any of the above statutes are considered to be misdemeanors for first offenders. A misdemeanor in Tennessee is punishable by a fine and/or up to 11 months and 29 days in jail. Violations of the above statutes for second or more frequent offenders may be prosecuted under the Tennessee felony statutes, which provide for much more substantial fines and jail sentences.

The College expects all students to comply with state laws relating to alcoholic beverages. The College does not condone the illegal possession, use, distribution, or sale of alcoholic beverages.

The following regulations apply to the on-campus use of alcoholic beverages by individuals, by groups, or by College organizations:

1. At no time will alcoholic beverages be served or provided to persons under the legal drinking age of the State of Tennessee.
2. The unlicensed sale in any manner of alcoholic beverages is prohibited.
3. Any individual, group, or organization wishing to serve or provide alcoholic beverages at an event is responsible for compliance with the applicable state laws and regulations.
4. Alcoholic beverages may not be used as an award or trophy for any event or program.
5. There will be no on campus parties open to the whole student body (commonly called open houses) at which alcohol beverages are served or provided.

ALCOHOL AWARENESS

The choices you make and the decisions you make say a lot about who you are and where you are going. If you decide to include alcohol in your life, it is up to you to make responsible decisions about drinking. No one but you can make these decisions.

Drinking responsibly is using alcohol in ways which harm neither the individual nor society. Responsible drinking also includes both the responsible serving of alcoholic beverages and a respect for others who choose to abstain or drink in moderation.

Factual information, both positive and negative, about the effects of alcohol and the process which leads to the disease of alcoholism may help you in your efforts to make responsible choices about drinking. Information about alcohol, alcohol abuse and alcoholism is available for you or someone you care about from the Counseling and Placement Center (located in the Briggs Student Center, Room 301). Test your knowledge on the subject. Be informed.

Approved: January 7, 1985

emergency numbers

Ambulance	458-3311
Crisis Intervention	726-5531
Fire	458-3311
Infirmary	726-3895
Memphis Police	528-2222
Rhodes Security	726-3880

memphis . . .

There comes a time when the campus at Rhodes College begins to feel just a little too quaint and a little too small and you just have to get off campus. We suggest:

- walking through Overton Park (never alone or at night, though, unless you're able to run a mile in less than four minutes)
- go shopping in one of the various malls
- go to Overton Square and get a Cookies-and-Cream ice cream cone at Swensen's
- find a sunny spot on campus and read, talk, cry, fly a kite, or throw a frisbee (but face away from academic buildings)
- put on a loud, polyester shirt and baggy shorts, hang a camera around your neck, and go visit Graceland with all the other tourists (a real cultural experience)
- spend a rainy afternoon at the Brooks Memorial Art Gallery or the Pink Palace Museum, or Dixon Art Gallery
- happy hour, anywhere
- go to an afternoon movie (cheap)
- go to a play or musical at Theatre Memphis, Circuit Playhouse, or Playhouse on the Square
- go to a Memphis Showboats football game or a Memphis Chicks Baseball game (spring-summer)
- visit the ornamental metals museum (when you're really more than bored)
- go to a concert at Mud Island or in the Mid-South Coliseum
- visit Libertyland amusement park
- go sightseeing downtown in the Hotel Peabody's lobby, the Beale Street area, and the Mid-America Mall
- treat a friend to a horse-driven carriage ride (starting in the parking lot of the Peabody)
- and, of course, there's always the zoo across the street (as I'm sure you'll realize when the wind shifts)
- take a friend and go down to the river and watch the water roll by





a final word . . .

The first half of this book told you what services are available to you; the second half shows the outlets through which you can serve others. Make sure to use both of these to your best advantage! The administration is more than willing to help you in any way, and almost all faculty members are easily accessible to students. Leaders of student groups are similarly available, get to know them and their organizations. Find the groups that interest you and get involved. Let the activities you choose help form your career decisions if you are undecided about your future. If you already have definite plans, find the groups that reinforce your goals. This type of active participation greatly benefits both you and Rhodes College.

Good Luck!

Heather Hicks