

Lilly
PULITZER



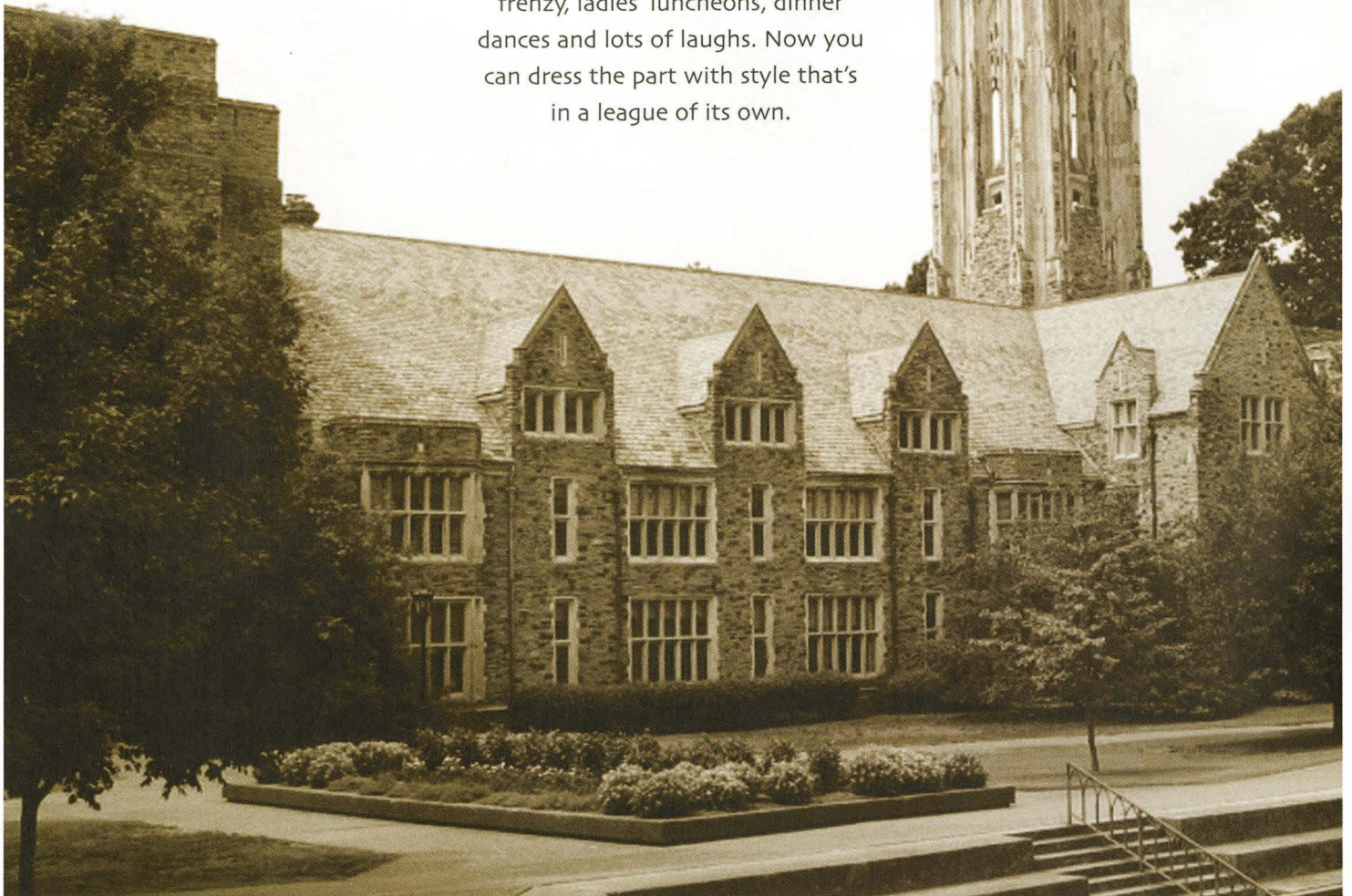
Life. Lilly. And the pursuit of happiness.™

Fall 2006



LILLY PULITZER'S IVY LEAGUE

Fall conjures up great memories of college days...and sometimes sends us back! Reunion weekends are packed full of tailgates, football frenzy, ladies' luncheons, dinner dances and lots of laughs. Now you can dress the part with style that's in a league of its own.



Homecoming at The Pink Door

September 25-29

Voting, Drawings and Prizes all week!

MONDAY, SEPT. 25

Lilly Homecoming Queen Nominations Begin with purchase of Lilly*

Nominate your candidate (can be yourself or friend) for The Pink Door's 2006 Lilly Homecoming Queen (LHQ)*

- One nominee per Lilly item purchased
- Free gift with purchase and chance to nominate

Enter drawing for **Just In Thyme Catering Tailgate Dinner** for 4**

TUESDAY, SEPT. 26

POLLS OPEN ALL DAY! Vote for Lilly Homecoming Queen

- Nominate your candidate for The Pink Door's LHQ with purchase and vote for nominees

Enter drawing for **Manicure and Pedicure at Cowgirls****

WEDNESDAY, SEPT. 27

Last Day to vote and nominate our Lilly Homecoming Queen*

- One nominee per Lilly item purchased

Enter drawing for **\$100 Lilly Gift Certificate****



THURSDAY, SEPT. 28

Lilly Pep Rally and Open House

Crowning of *Queen Lilly* at 6:00 p.m.

- Enjoy tailgate refreshments, meet and mingle with Queen Lilly while she is crowned and awarded her homecoming lilies and prizes

*Nominees must be present to be crowned***

Enter drawing for **Lilly Jewelry box****

FRIDAY, SEPT. 28

Game Day

Enter drawing for **Grand Prize of Lilly Tailgate Survival Kit****

* One Queen Lilly nominee per Lilly item purchased

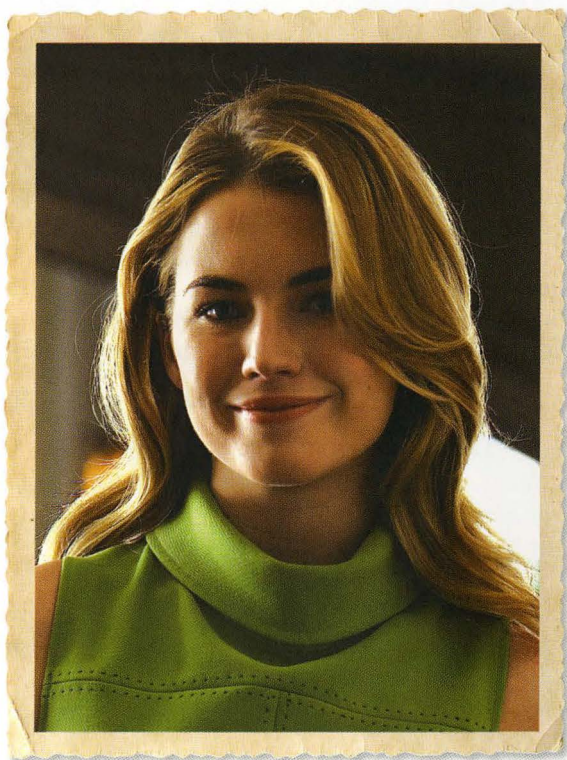
** Purchase not necessary for drawings or voting on LHQ candidates

*** Votes can only be made for nominated candidates made with Lilly purchases

Drawing winners do not have to be present to win, a winner will be drawn each day



The Pink Door



Celebrity Model and Lilly Lover!

Recognize the beautiful blonde
in Lilly Pulitzer's Fall campaign?

It's Amanda Hearst, Lilly Lover and
publishing heiress. Great-granddaughter of
William Randolph Hearst, Amanda has inherited
a nose for clothes. Not because her family
owns the presses, but because she graces
the fashion pages as a beautiful, new model.

Coming from a long line of Lilly Lovers,

Amanda is over the moon about
the Fall collection.



A,B,C,D,E

THIS PAGE
ANGELINA JACKET

A. Fitted single button blazer with triple button cuff and contrast stitching details. 0-14. Available exclusively as shown. \$298

STACIA SWEATER

B. Gorgeous cashair cap-sleeve "light as air" sweater shell. XS-XL. 100% cashmere in: Black, Chocolate Brown, **Homecoming Pink (this page)**, Provincetown Pink, **Snow Day White (on cover)**, Varsity Green. \$128

MAIN LINE BLING JEAN

C. Long and lean five pocket jean with argyle embroidery on back pockets. 32" inseam. 0-16. Stretch denim. Available exclusively as shown. \$198

MINNIE SCARF

D. Printed neckerchief scarf, expertly hand rolled. 18". 100% silk in: Bluff Brown Campus Paisley, **Chocolate Brown Ivy League Floral**. \$68

ACADEMY BELT

E. D-ring belt. S-XL. Silk grosgrain in: **Striped** and Argyle. Embroidered corduroy in Chocolate Brown, Mini Strawberries, Classic Camel Mini Scotty Dogs. \$45

COVER

KIRSTEN JACKET

Fitted three button jacket with front pockets and elbow patches. 0-16. Stretch corduroy in: **Chocolate Brown**, Provincetown Pink, Varsity Green, Classic Camel Mini Scotty Dog Embroidery. \$188-\$198

VAL CAMI

Camisole party top with ruffle details. 0-12. Silk chiffon in: **Chocolate Brown Ivy League Floral**, Phipps Pink Franklin Field. \$148

SCHOLAR SCARF

Cashmere scarf with chevron stripes. 64"l x 4"w. \$118

CAMERON JEAN SKIRT

Straight skirt with rhinestones and argyle embroidery on back pockets. 21". 0-14. Stretch denim. Available exclusively as shown. \$158

GENEVIEVE COAT

Belted button-front overcoat. 0-16. 100% wool in: Lowell Green, **Pretty in Pink**. \$558

SISSY CAMI

Layering tank with slight V-neck. XS-XL. Stretch cotton in: Annenberg Coral, Black, Chocolate Brown, Hibiscus Pink, Homecoming Pink, Provincetown Pink, Varsity Green, **White**. \$45

SPENCER PANT

Fashion fit cropped pant with cuff. 25" inseam. 0-14. Available in: **Twill Flannel**, Pepper Tweed. \$188

MINNIE SCARF

Printed neckerchief scarf, expertly hand rolled. 18". 100% silk in: Bluff Brown Campus Paisley, **Chocolate Brown Ivy League Floral**. \$68

PEARLA JACKET

F. 3/4 sleeve cropped jacket with asymmetrical button closure. 0-14. Twill flannel in: **Commencement Pink**, **Ivy Green**. \$298

BALLERINA TEE

G. Lightweight, long sleeve ballet neck tee. XS-XL. Cotton/silk blend in: **Black**, **Homecoming Pink**, **Provincetown Pink**, **Snow Day White**, **Varsity Green**. \$70

BEA SKIRT

H. Sophisticated, A-line skirt. 21". 0-14. Available in: **Classic Jackie Print**, **Chocolate Brown Ivies Embroidery**, **Hibiscus Pink Honor Roll Embroidery**. \$228

PORTIA DRESS

J. Sleeveless A-line dress with contrast stitching. 21". 0-16. Doubleface crepe in: **Homecoming Pink**, **Lowell Green**. \$248



F,G,H

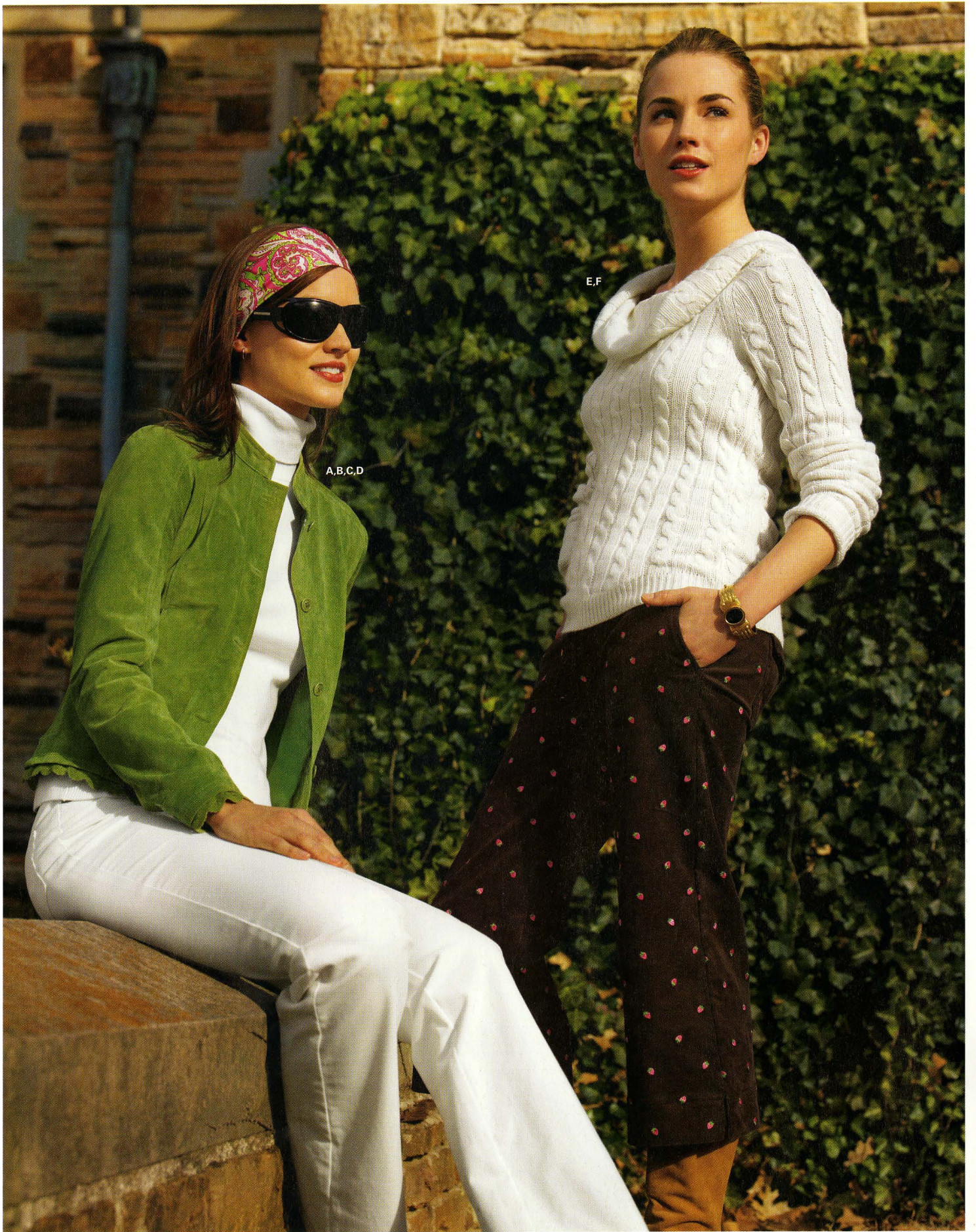
J



D,E,F,G

H,J,K

Shot on location at Rhodes College.



A,B,C,D

E,F



G.H.J

SKINNY SCARF

A. Printed oblong scarf, expertly hand rolled. 12.75" x 64". 100% silk in: **Grad Green Pretty Paisley**, Limeade Butterfly-ology, Phipps Pink Sunflower, Reunion Pink Homecoming Floral. \$88

BOBBI T-NECK SWEATER

B. Slim fit, long sleeve turtleneck. XS-XL. Stretch cotton in: Annenberg Coral, Black, Chocolate Brown, Homecoming Pink, Ivy Green, Homecoming Pink, Snow Day White. \$98

CONNOR JACKET

C. Button-front luxe suede jacket with eyelet details. 0-14. 100% suede in: Classic Camel, Lowell Green. \$298

MAIN LINE PANT

D. Long and lean five pocket pant. 32" inseam. 0-16. Stretch corduroy in: Charles River Blue, Chocolate Brown, Hibiscus Pink, Ivy Green, Provincetown Pink, Snow Day White, Tiger Peach, True Navy, Varsity Green. \$148

MONA COWL NECK

E. Cowl neck cable knit sweater. XS-XL. Soft yarn blend in: Homecoming Pink, Snow Day White. \$158

MARYN PANT

F. Cropped straight leg pant with back envelope pockets. 23" inseam. 0-16. Stretch corduroy in: Provincetown Pink, Varsity Green. Embroidered stretch corduroy in: **Chocolate Brown Mini Strawberries**. \$128-\$158

TRISH CASHMERE SWEATER

G. Luxurious deep V-neck cable sweater. XS-XL. 100% cashmere in: Black, Bright Navy, Charles River Blue, Chocolate Brown, Classic Camel, Hibiscus Pink, Provincetown Pink, Snow Day White, Tiger Peach, Varsity Green. \$228

NADALIE SHIRT

H. Slim fit, long sleeve button-down shirt with wide cuff. 0-16. 100% cotton in: Hibiscus Pink Stripe, Textbook Blue Ivy League, White Argyle. \$105

EMLYN SKIRT

J. A chic skirt with front and back pockets. 19". 0-14. Stretch corduroy in: **Argyle Patch**, Chocolate Brown, Provincetown Pink, Snow Day White, Varsity Green. Embroidered stretch corduroy in: Chocolate Brown Mini Ivies, Classic Camel Mini Scotty Dog. Embroidered stretch denim in: Indigo Blue Mini Strawberry, Indigo Blue Mini Whales. 100% cotton Preppy Twill in: Hibiscus Pink, Library Tan, Prep Green. \$88-\$168



LIL' LIBBI PUFFER VEST

C. Girl's reversible down-filled vest with pockets. 2T-16. 100% polyester in: **Chocolate Brown Radcliff Yard/Hibiscus Pink, True Navy/Hibiscus Pink.** \$88-\$104

LONG SLEEVE LIL' SHRUNKEN POLO

D. Girl's long sleeve polo. 2T-16. Stretch pique in: **Bright Navy, Prep Green, Provincetown Pink, White.** \$38-\$40

JULIA SKIRT

E. Girl's corduroy skirt with dropped waist and flounce. 7-16. Stretch corduroy in: **Hibiscus Pink, Orange Spice.** \$64

TRISH CASHMERE SWEATER

F. Luxurious deep V-neck cable sweater. XS-XL. 100% cashmere in: **Black, Bright Navy, Charles River Blue, Chocolate Brown, Classic Camel, Hibiscus Pink, Provincetown Pink, Snow Day White, Tiger Peach, Varsity Green.** \$228 Also available in cotton. \$138

CAMPUS CAP

G. Cashmere hat in an exclusive Lilly fairisle with solid trim. One size. \$65

SCHOLAR SCARF

H. Cashmere scarf in an exclusive Lilly fairisle with solid fringe. One size. \$98

BROOKE DENIM JEAN

J. Girl's novelty embroidered jean with five pocket detail. 2T-16. Stretch denim. Available in: **Argyle Embroidery, Indigo Blue Mini Whales, Strawberry Applique.** \$78-\$84

TRISH ARGYLE SWEATER

K. Luxurious V-neck cable sweater. XS-XL. 100% cashmere in: **Hibiscus Pink Argyle, Lowell Green Argyle.** \$248

NADALIE SHIRT

L. Slim fit, long sleeve button-down shirt with wide cuff. 0-16. 100% cotton in: **Hibiscus Pink Stripe, Textbook Blue Ivy League, White Argyle.** \$105

EMLYN SKIRT

M. A chic skirt with front and back pockets. 19". 0-14. Stretch corduroy in: **Argyle Patch, Chocolate Brown, Provincetown Pink, Snow Day White, Varsity Green.** Embroidered stretch corduroy in: **Chocolate Brown Mini Ivies, Classic Camel Mini Scotty Dog.** Embroidered stretch denim in: **Indigo Blue Mini Apples, Indigo Blue Mini Strawberry, Indigo Blue Mini Whales.** 100% Cotton Preppy Twill in: **Hibiscus Pink, Library Tan, Prep Green.** \$88-\$168



TRISH SWEATER

F. Deep V-neck with slim fit. Stretch cotton in: Bright Navy, Provincetown Pink, **Snow Day White**. \$130

TRISH ARGYLE SWEATER

G. Deep V-neck sweater with argyle pattern on front and back. Stretch cotton. Available exclusively as shown. \$138 Also available in cotton. \$228



TRISH CASHMERE SWEATER

H. Luxurious deep V-neck cable sweater. XS-XL. 100% cashmere in: Black, Bright Navy, **Charles River Blue**, Chocolate Brown, Classic Camel, Hibiscus Pink, Provincetown Pink, Snow Day White, Tiger Peach, Varsity Green. \$228



SANYA FAIRISLE SWEATER

J. Cardigan with delicate crochet detail in an exclusive Lilly fairisle pattern. XS-XL. Soft yarn blend. Available exclusively as shown. \$158



ALINE CARDIGAN

K. Elegant long sleeve cardigan with single hook and eye closure. XS-XL. 100% cashmere in: Chocolate Brown, **Hibiscus Pink**, Homecoming Pink, Papaya Green, Snow Day White. \$228

SATINE CAMISOLE

L. Camisole with detachable halter strap. XS-XL. 100% cashmere in: Chocolate Brown, **Hibiscus Pink**, Papaya Green, Snow Day White. \$168

LAURIE SKIRT

M. Wide sweep skirt with eyeleted hem. 27". 0-12. 100% suede. Available exclusively as shown. \$318

A,M



JOY FAIRISLE SWEATER

A. Girl's fairisle cardigan with novelty motifs. 2T-6X. 100% cotton. Available in: Bright Navy Fancy Fairisle with Pumpkins, **Homecoming Pink Fancy Fairisle with Scottie Dogs**. \$80-\$88

KYRA EMBROIDERED CORD

B. Corduroy pant with patch pockets and contrast piping detail. 2T-6X. Stretch corduroy in: **Classic Camel Mini Scottie Dog Embroidery**, Orange Spice Mini Pumpkin Embroidery. \$82

CASHMERE

ALINE CARDIGAN

C. Elegant long sleeve cardigan with hook and eye closure. XS-XL. 100% cashmere in: Chocolate Brown, **Hibiscus Pink**, Homecoming Pink, Papaya Green, Snow Day White. \$228

SATINE CAMISOLE

D. Camisole with detachable halter strap. XS-XL. 100% cashmere in: Chocolate Brown, **Hibiscus Pink**, Papaya Green, Snow Day White. \$168

ESTELLA PANT

E. Full-length, fashion fit trouser pant with slash pockets. 32" inseam. 100% wool in: **Chocolate Brown Windowpane**, Black Stripe, University Grey Stripe, Dark Grey, Sand. \$178-\$198

LIL' NORA

F. Girl's rib turtleneck with scallop edging. 2T-16. Stretch cotton 2x2 rib in: Bright Navy, Orange Spice, **Provincetown Pink**, Snow Day White. \$56-\$62

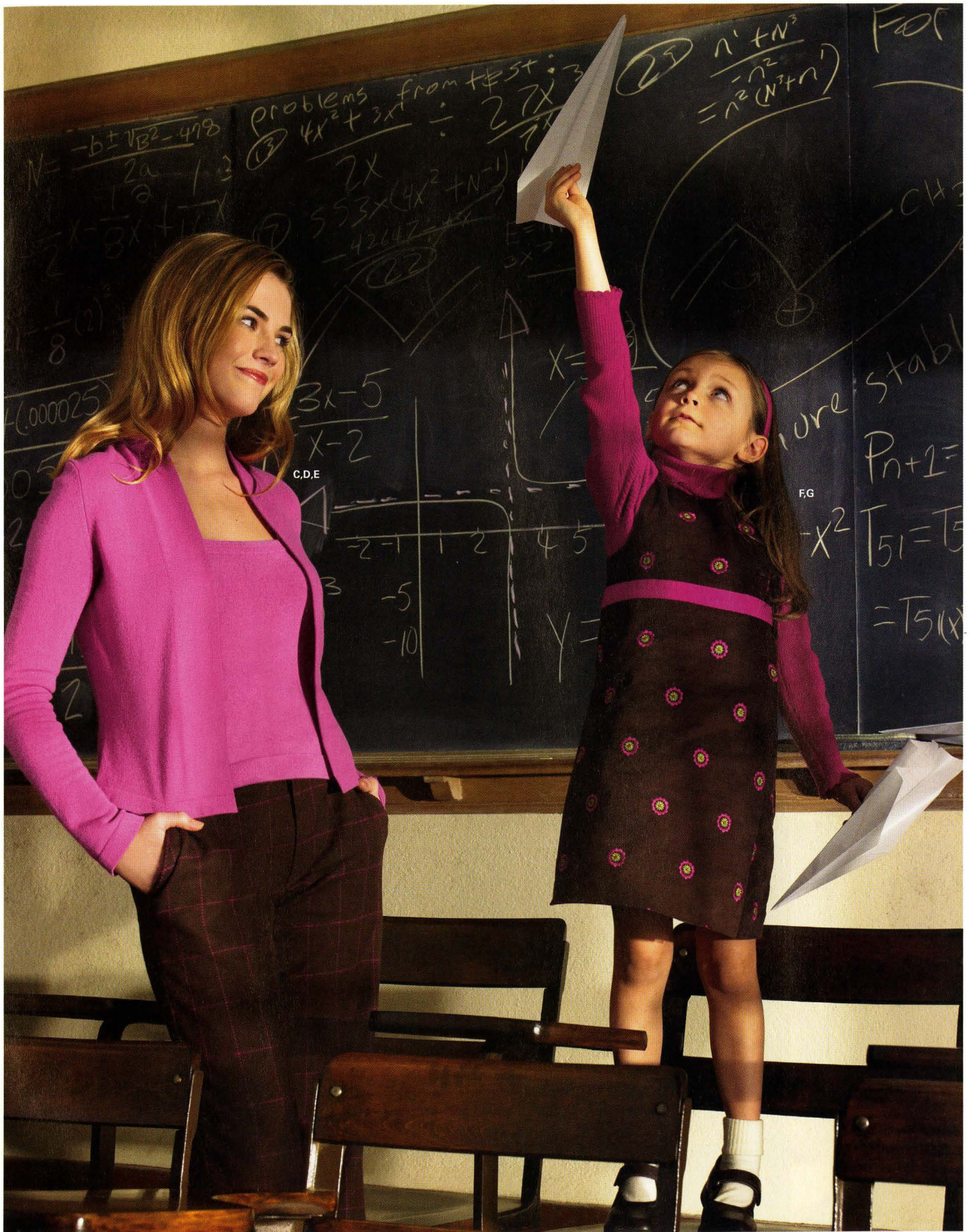
KATRINE DRESS

G. Girl's faux wrap shift dress with contrast belt at empire waist. 2T-6X. Stretch corduroy in: **Chocolate Brown Mini Ivies Embroidery**, Orange Spice Mini Pumpkin Embroidery. \$72-\$76



A,B

Shot on location at Rhodes College.



C,D,E

F,G

"GIRLS ONLY CLUB" JACKET

A. Sporty, fitted fleece jacket with zip front. 2T-16. 100% polar fleece in: **Prep Green**, Provincetown Pink. \$68-\$78

CHRISSEY PANT

B. Classic pant with extended tab waistband and side piping. 7-16. 100% cotton Preppy Twill. Available exclusively as shown. \$70

LIL' SHRUNKEN RUGBY POLO

C. Long sleeve rugby stripe polo with solid sleeves. 2T-16. Cotton stretch pique in: Hibiscus Pink Kid's Preppy Stripe, **White Kid's Preppy Stripe**. \$42-\$46

ROSIE JUMPER

D. Overall jumper with front pocket. 2T-6X. Stretch corduroy in: **Argyle Patch (far right)**, Classic Camel Mini Scottie Dog Embroidery, Prep Green An Apple A Day. Stretch denim embroidery in: **Indigo Blue Mini Whales (near right)**. 100% cotton twill in: Indigo Blue Franklin Field. \$78-\$100

LONG SLEEVE LIL' SHRUNKEN POLO

E. Fitted long sleeve, shrunken polo. 2T-16. Cotton stretch pique in: Bright Navy, Hibiscus Pink, Prep Green, **White**. \$38-\$40

BROOKE ARGYLE JEAN

F. Five pocket jean with argyle details at hem and back pockets. 2T-16. Stretch denim. Available exclusively as shown. \$84-\$98

GIRLS T-NECK

G. Solid cotton turtleneck with embroidered motifs at neckline. 2T-16. 100% cotton in: Phipps Pink with Strawberry, **Prep Green with Argyle**, White with Scottie Dog. \$35-\$39

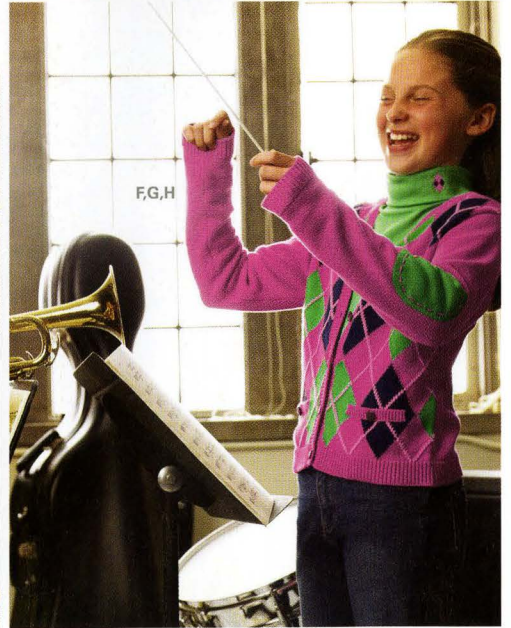
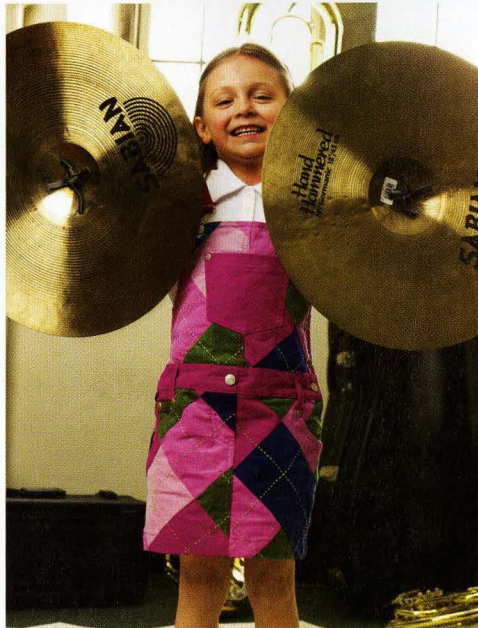
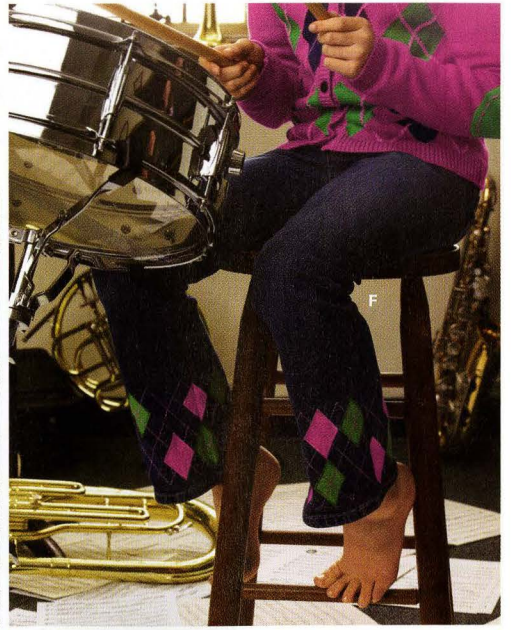
HEAD OF THE CLASS CARDIGAN

H. V-neck argyle cardigan with elbow patches. 2T-16. 100% cotton in: **Hibiscus Pink Aggie Argyle**, Prep Green Aggie Argyle. \$68-\$74



A,B

C,D



CYNTHIA DRESS

Fitted, sheath dress with belted waist and button skirt. 21". 0-16.
Merino ponte in: **Homecoming Pink**, Lowell Green. \$228



CYNTHIA DRESS

Fitted, sheath dress with belted waist and button skirt. 21". 0-16. Merino ponte in: **Homecoming Pink**, Lowell Green. \$228



CARMELLA DRESS

Sexy fit halter dress with velvet lace overlay. 27". 0-12. Velvetene eyelet. Available exclusively as shown. \$368

STORE LOCATIONS

ARIZONA
PINK SAGUARO
Arizona Biltmore
Resort and Spa
2400 East Missouri St.
Phoenix, AZ
602.955.6600

CALIFORNIA
PINKALICIOUS
La Costa Resort and Spa
2100 Costa Del Mar Rd.
Carlsbad, CA
800.854.5000

PINK WASABI
At the Pine Inn
Ocean Ave. at Lincoln Ln.
Carmel by the Sea, CA
831.622.0337

PINK WASABI
7986 East Pacific Coast Hwy.
Newport Coast, CA
949.497.2422

LILLY PULITZER
Fashion Valley
7007 Friars Rd.
San Diego, CA
619.491.0050

CONNECTICUT
DARIEN SPORT SHOP
1127 Post Rd.
Darien, CT
203.655.2575

LILLY PULITZER
(Coming Soon)
92 Greenwich Ave.
Greenwich, CT

PINK BY THE HARBOR
1 Schooner Ln.
Milford, CT
203.783.0474

A SPLASH OF PINK
Playhouse Square
275 Post Rd. E.
Westport, CT
866.702.3281

DELAWARE
TICKLED PINK
235 Rehoboth Ave.
Rehoboth Beach, DE
302.227.7575

FLORIDA
THE PINK PALM
2957 West Bay Dr.
Belleair Bluffs, FL
877.242.9718

THE PALM ON PARK
360 Park Ave.
Boca Grande, FL
866.964.4448

THE PINK PINEAPPLE
26795 S. Bay Dr. #166
Bonita Springs, FL
239.947.7462

C. ORRICO
1218 E. Atlantic Ave.
Delray Beach, FL
561.278.5353

BAREFOOT PRINCESS
9375 Emerald Coast Pkwy. W.
Destin, FL
850.267.6809

LAUDERDALE LIFESTYLE
819 E. Las Olas Blvd.
Ft. Lauderdale, FL
866.524.5459

THE PINK PINEAPPLE
5100 Daniels Pkwy. #500
Fort Myers, FL

LILLY PULITZER
600 Front St.
Key West, FL
305.295.0995

C. ORRICO
255 13th Ave. S.
Naples, FL
239.435.4565

C. ORRICO
336 S. County Rd.
Palm Beach, FL
561.659.1284

BAREFOOT PRINCESS
4 Watercolor Blvd. S.
Unit 101
Santa Rosa Beach, FL
850.534.0825

LILLY PULITZER
St. Armands Cir.
443A John Ringling Blvd.
Sarasota, FL
941.388.3091

THE PINK PALM
1532 S. Dale Mabry Hwy.
Tampa, FL
877.242.9718

THE LAZY DAISY
919 Azalea Ln.
Vero Beach, FL
772.231.4006

LILLY PULITZER
114-118 N. Park Ave.
Winter Park, FL
407.539.2324

GEORGIA
MINT JULEP
11550 Webb Bridge Way, #4
Alpharetta, GA
678.762.9575

PINK LEMONADE
3802 Roswell Rd., Ste. 23
Atlanta, GA
404.846.0841

VIA MIZNER
Surrey Ctr., Lower Level
349 Highland Ave.
Augusta, GA
706.434.0067

SUNKISSED
5500 Abercorn St.
12 Oaks Shopping Ctr.
Savannah, GA
912.354.4060

CLOISTER COLLECTION
600 Sea Island Rd.
St. Simons Island, GA
888.607.2822

ILLINOIS
LILLY PULITZER
29 E. First St.
Hinsdale, IL
630.986.1821

LILLIE ALEXANDER
197 E. Westminster Ave.
Lake Forest, IL
847.295.8686

INDIANA
THE PINK LIME
8697 River Crossing Blvd.
Indianapolis, IN
317.569.8800

KANSAS
UNDER THE PALM TREE
Hawthorne Plaza
4741 W. 119th St.
Overland Park, KS
913.451.1445

KENTUCKY
THE PEPPERMINT PALM
Lansdowne Shoppes
3333 Tates Creek Rd.
Lexington, KY
859.268.1012

THE PEPPERMINT PALM
The Vogue
3739 Lexington Rd.
Louisville, KY

LOUISIANA
LE PALMIER
7450 Jefferson Hwy., Ste. 365
Baton Rouge, LA
225.952.9116

PALM PATCH
800 Metairie Rd., Ste. R
Metairie, LA
504.833.0039

MARYLAND
THE PINK CRAB
188 Main St.
Annapolis, MD
410.216.9994

TICKLED PINK
7259 Woodmont Ave.
Bethesda, MD
301.913.9191

THE PINK CRAB
7701 Bellona Ave.
Ruxton, MD
410.823.8544

MASSACHUSETTS
IN THE PINK
133 Newbury St.
Boston, MA
888.695.4559

IN THE PINK
The Derby St. Shoppes
Hingham, MA
888.695.4559

IN THE PINK
160 Washington St.
Marblehead, MA
888.695.4559

IN THE PINK
Mashpee Commons
38 Nathan Ellis Hwy.
Mashpee, MA
888.695.4559

IN THE PINK
5 S. Water St.
Nantucket, MA
888.695.4559

E.A. DAVIS
579 Washington St.
Wellesley, MA
781.235.0688

MINNESOTA
MELLY
3906 W. 50th St.
Edina, MN
952.929.9252

MISSISSIPPI
THE VILLAGE PALM
4500 I-55 N., Ste. 180
Jackson, MS
677.747.1254

MISSOURI
RESORT CLASSICS
9810 Clayton Rd.
Ladue, MO
314.997.6161

NEVADA
DESERT DAISY
120 S. Green Valley Pkwy.
Ste. 184
Henderson, NV
702.269.0017

NEW JERSEY
PALM PLACE
161 Main St.
Manasquan, NJ
732.223.1655

LILLY PULITZER
The Promenade at Sagamore
500 Route 73 S.
Marlton, NJ
856.489.6751

PARADISE
1098 Mt. Kemble Ave.
Morristown, NJ
866.781.7600

LEAPIN' LIZARDS
250 E. Ridgewood Ave.
Ridgewood, NJ
201.444.1300

NEW YORK
THE ISLAND
177 Seventh St.
Garden City, NY
516.248.2481

THE ISLAND
310 New York Ave.
Huntington, NY
631.271.3333

A SPLASH OF PINK
98 Main St.
Southampton, NY
866.702.3281

LILLY PULITZER
The Westchester
125 Westchester Ave.
White Plains, NY
914.428.4160

NORTH CAROLINA
MISS PRISS
7808-A Rey Rd.
Charlotte, NC
704.341.3833

LIFE'S A BEACH
1240 Duck Rd., Ste. 111
Duck, NC
866.629.7465

PALM AVENUE
3107 Northline Ave.
Greensboro, NC
336.292.9584

PALM AVENUE
424 Woodburn Rd.
Raleigh, NC
919.828.2980

PALM GARDEN
Landfall Center
1319A Military Cutoff Rd.
Wilmington, NC
888.650.3428

OHIO
LILLY PULITZER
Legacy Village
25293 Cedar Rd.
Lyndhurst, OH
216.291.8670

PENNSYLVANIA
LILLY PULITZER
Suburban Square
95 Coulter Ave.
Ardmore, PA
610.658.0387

LILLY PULITZER
King of Prussia Plaza
160 N. Gulph Rd.
King of Prussia, PA
610.265.7607

PALM PLACE
5523 Walnut St.
Shadyside, PA
412.683.5530

SOUTH CAROLINA
PALM AVENUE
251 King St.
Charleston, SC
843.577.5219

PINK BEE
105 Augusta St.
Greenville, SC
864.271.4332

S.M. BRADFORD CO.
2B The Village at Wexford
Hilton Head, SC
866.686.6161

PINK FLAMINGO
1605 Palmetto Grande Dr.
Mt. Pleasant, SC
877.388.PINK

THE JOGLING BOARD
11096 Ocean Hwy.
Pawleys Island, SC
866.218.1629

TENNESSEE
THE PINK DOOR
4615 Poplar Ave., Ste. 5
Memphis, TN
901.682.2107

THE FIRST RESORT
2225 Bandywood Dr.
Nashville, TN
615.292.4289

TEXAS
LILLY PULITZER
North Park Center
8687 W. Central Expway.
Dallas, TX

LILLY PULITZER
The Shops at La Cantera
15900 La Cantera Pkwy.
San Antonio, TX
210.877.0721

LILLY PULITZER
Southlake Town Square
405 Grand Ave. E.
Southlake, TX
817.310.3947

LILLY PULITZER
Market Street
9595 Six Pines Dr.
The Woodlands, TX
281.465.9764

VIRGINIA
TICKLED PINK
103 S. Saint Asaph St.
Alexandria, VA
703.518.5459

PINK PALM
1051 Millmont St.
Charlottesville, VA
434.977.0800

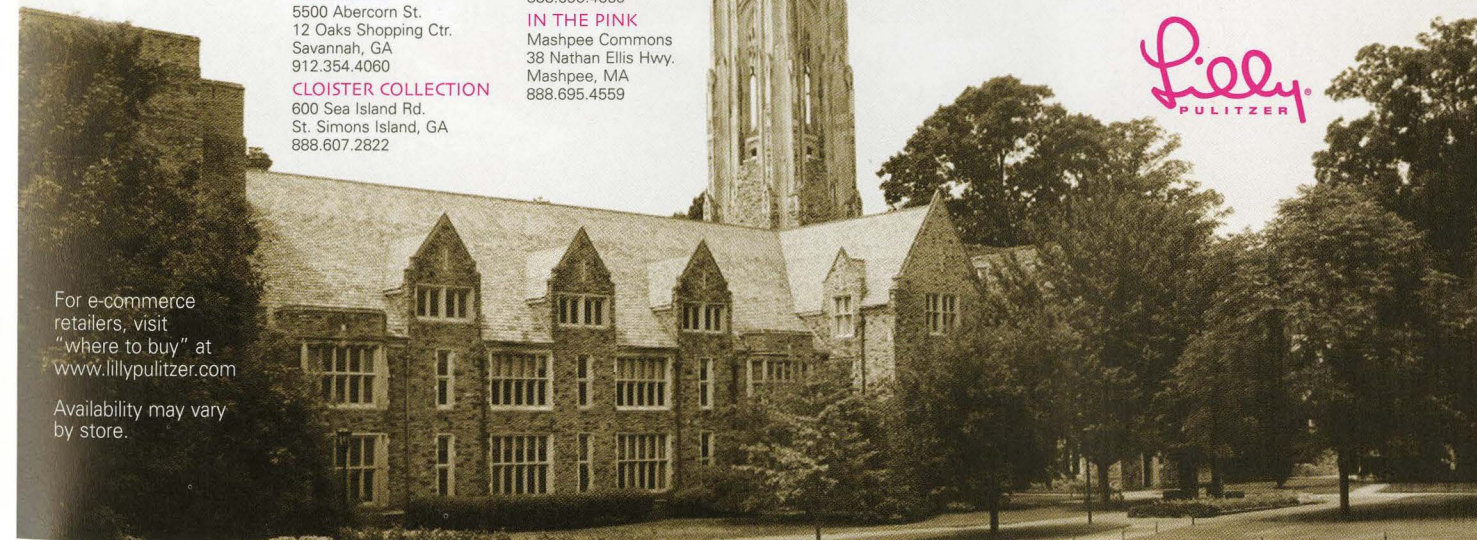
PINK PALM
11874 Market St.
Reston, VA
703.787.8050

PINK PALM
6233 River Rd.
Richmond, VA
804.282.8799

OCEAN PALM
La Promenade Shoppes
1860 Laskin Rd. #118
Virginia Beach, VA
866.437.7256

PINK CABANA
411 W. Duke of Gloucester
Williamsburg, VA
757.229.3961

WISCONSIN
PINK WHIMSY
1412 W. Mequon Rd.
Mequon, WI
262.241.8732



For e-commerce retailers, visit "where to buy" at www.lillypulitzer.com

Availability may vary by store.



Lilly Pulitzer®

Sugartown Worldwide, Inc.

800 Third Avenue

King of Prussia, PA 19406-1412

www.lillypulitzer.com



A,B,C

BOBBI T-NECK SWEATER

A. Slim fit, long sleeve turtleneck sweater. XS-XL. Stretch cotton in: Arnhemberg Coral, Black, Chocolate Brown, Hornecorning Pink, Ivy Green, Snow Day White. \$98

KENNEDY COAT

B. Slim fit princess coat with organic ivory buttons. 100% Italian wool exclusive to Lilly Pulitzer®. 0-16. Available exclusively as shown. \$456

MAIN LINE PANT

C. Fitted, long and lean five pocket pant. 32" inseam. 0-16. Stretch corduroy in: Charles River Blue, Chocolate Brown, Hibiscus Pink, Ivy Green, Provincetown Pink, Snow Day White, Tiger Peach, True Navy, Varsity Green. \$148



G.H.J

SKINNY SCARF

A. Printed oblong scarf, expertly hand rolled. 12.75" x 64". 100% silk in: **Grad Green Pretty Paisley**, Limeade Butterfly-ology, Phipps Pink Sunflower, Reunion Pink Homecoming Floral. \$88

BOBBI T-NECK SWEATER

B. Slim fit, long sleeve turtleneck. XS-XL. Stretch cotton in: Annenberg Coral, Black, Chocolate Brown, Homecoming Pink, Ivy Green, Homecoming Pink, Snow Day White. \$98

CONNOR JACKET

C. Button-front luxe suede jacket with eyelet details. 0-14. 100% suede in: Classic Camel, Lowell Green. \$298

MAIN LINE PANT

D. Long and lean five pocket pant. 32" inseam. 0-16. Stretch corduroy in: Charles River Blue, Chocolate Brown, Hibiscus Pink, Ivy Green, Provincetown Pink, Snow Day White, Tiger Peach, True Navy, Varsity Green. \$148

MONA COWL NECK

E. Cowl neck cable knit sweater. XS-XL. Soft yarn blend in: Homecoming Pink, Snow Day White. \$158

MARYN PANT

F. Cropped straight leg pant with back envelope pockets. 23" inseam. 0-16. Stretch corduroy in: Provincetown Pink, Varsity Green. Embroidered stretch corduroy in: **Chocolate Brown Mini Strawberries**. \$128-\$158

TRISH CASHMERE SWEATER

G. Luxurious deep V-neck cable sweater. XS-XL. 100% cashmere in: Black, Bright Navy, Charles River Blue, Chocolate Brown, Classic Camel, Hibiscus Pink, Provincetown Pink, Snow Day White, Tiger Peach, Varsity Green. \$228

NADALIE SHIRT

H. Slim fit, long sleeve button-down shirt with wide cuff. 0-16. 100% cotton in: Hibiscus Pink Stripe, Textbook Blue Ivy League, White Argyle. \$105

EMLYN SKIRT

J. A chic skirt with front and back pockets. 19". 0-14. Stretch corduroy in: **Argyle Patch**, Chocolate Brown, Provincetown Pink, Snow Day White, Varsity Green. Embroidered stretch corduroy in: Chocolate Brown Mini Ivies, Classic Camel Mini Scotty Dog. Embroidered stretch denim in: Indigo Blue Mini Strawberry, Indigo Blue Mini Whales. 100% cotton Preppy Twill in: Hibiscus Pink, Library Tan, Prep Green. \$88-\$168