

These were given me: by Sally a marine?

Memphis Press-Scimitar

Sunny, high today in middle 60s. Clear, low tonight in low 40s. Wednesday sunny, warmer. Thursday, partly cloudy.

MEMPHIS, TENN., TUESDAY, MARCH 14, 1961

NO. 114

FINAL EDITION
MARKETS
PRICE FIVE CENTS

'Save Overtown Park!'—Cry At Expressway Hearing

U. S. Orders 100 Giant New Jets

Fleet to Serve Air Force

The Air Force will receive today with a \$1 billion fleet of 100 new jets that will be a substantial part of any point in the fleet in a day's time.

The Air Force yesterday announced that it will purchase 100 new jets, the largest order in the history of the Air Force. The jets are to be delivered in 1962 and will be used to replace the current fleet of 100 jets.

Well Wins

Well won the match today, defeating his opponent in a decisive victory.

Mrs. Shaver

Mrs. Shaver is recovering from her illness and is expected to be discharged from the hospital today.



BIG ROOM TOO SMALL—County Courtroom shown was overflowed by more than 100 people this morning as effort was made to hold expressway hearing. Results larger room had to be found.

Overflow Crowd Voices Protests

Meeting Forced to Move To the Auditorium

By BILL E. BURK and ELLTON WHIST BUNT

Such a large crowd of citizens came out to protest putting the East-West Expressway that Overtown Park that the meeting had to be moved. With confusion and shouting broke out in the public expressway hearing today.

So many people showed for the hearing on the proposed route of the East-West Expressway, planned to go thru Overtown Park, that the hearing had to be moved from the County Courtroom to the Music Room in the Hall of Arts Auditorium.

An estimated 400 people showed up to make their views known. Many of the protesters were that the meeting which finally started at 11:30 a.m. was held in the auditorium.

Throughout the crowd there were about 10 or 12 home-made signs, printed with green ink on white placards, saying "Save Overtown Park."

An effort was made to start the meeting at 10 a.m. at the County Courtroom.

Overflow

Only a few people were able to get into the County Courtroom for the hearing.

Mayor Leon County, Commissioner of Public Works, and other officials were present.

Memphis a Terminus

Memphis is a terminus for the expressway, and the city is expected to be a major center for the project.

UN Soldiers Rescue Girl

She Was Victim Of Congo Men

By United Press International

LEOPOLVILLE. The Congo A United Nations patrol has rescued an American missionary girl who had been raped by Congolese soldiers.

The American girl was rescued in Kama, a town in Kivu province. She has been taken to the town of Kindu, which is 186 miles west of the Kivu capital of Bukavu.

The UN patrol of Malayan troops took her to nine other members of American missionary families awaiting repatriation from the chaotic province of Bukavu.

Discipline that the patrol had rescued the girl. The girl was rescued after the U.S. Air Force started massive raids on the province.



'SAVE OVERTOWN PARK'—The sign was held by two women who were part of the crowd at the hearing. The sign was one of many that were held by the protesters.

10 Years of Business

Shotgun Stolen

Press-Scimitar Reporter Blushes

WONT

These were given me: by Jelly or Martin?

Memphis Press-Scimitar

FINAL EDITION
MARKETS
PRICE FIVE CENTS

Sunny, high today in middle 60s. Clear, low tonight in low 40s. Wednesday sunny, warmer. Thursday, partly cloudy.

MEMPHIS, TENN., TUESDAY, MARCH 14, 1961

NO. 114

'Save Overton Park!'—Cry At Expressway Hearing

U. S. Orders 100 Giant New Jets

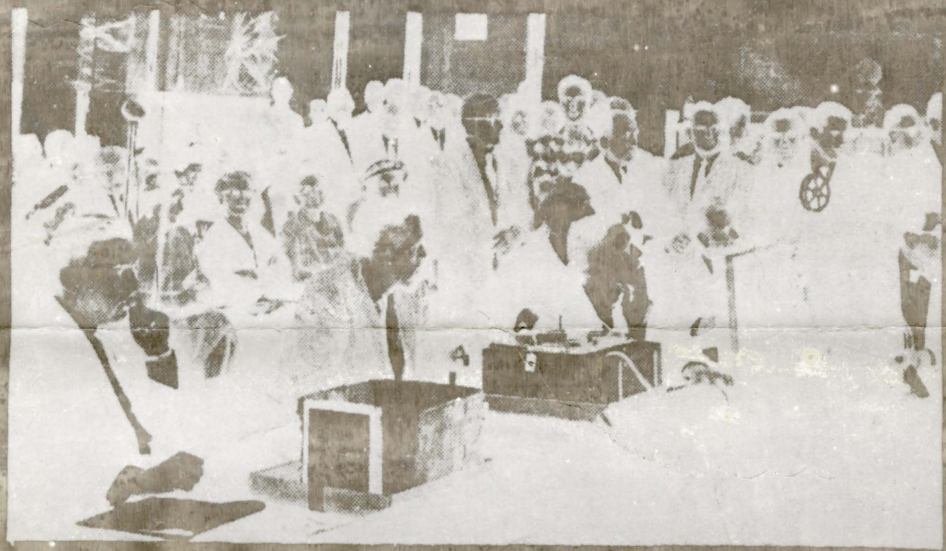
Fleet to Serve Airman Needs

The Air Force will receive today with orders for \$1 billion fleet of 100 jets that will be a substantial part of any point in the next few days. The jets will be used for a day's time.

The jets were ordered yesterday by the Air Force, which long has been looking for a replacement for the A-1H. The jets were ordered on the basis of a 100-gigawatt jet engine plants.

The jets will be used for a day's time. The jets will be used for a day's time.

The jets will be used for a day's time. The jets will be used for a day's time.



BIG ROOM TOO SMALL—County Courtroom, shown, was overflowed by more than 100 people this morning as effort was made to hold expressway hearing. Result: a larger room had to be found.

UN Soldiers Rescue Girl

She Was Victim Of Congo Men

By United Press International
LEOPOLDVILLE, The Congo—A United Nations patrol has rescued an American missionary girl who had been raped by Congolese soldiers.

The American girl was rescued March 5 in Kama, a town in Kivu province. She has been taken to the town of Kindu, which is 186 miles west of the Kivu capital of Bukavu. The UN patrol of Malayan troops took her to nine other members of American missionary families awaiting repatriation from the chaotic province of Bukavu.



'SAVE OVERTON PARK'—The plea of two women for the preservation of the park was heard today at the expressway hearing. Similar signs displayed at the hearing are left to right, Mrs. James E. McLean, Mrs. N. McLean, and Mrs. Edwin Bennett.

Overflow Crowd Voices Protests

Meeting Forced to Move To the Auditorium

By BILL E. BERRY and ELTON WHITNEY

Such a large crowd of citizens came out to protest putting the East-West Expressway thru Overton Park that the meeting had to be moved. With confusion and shouting broke out in the public expressway hearing today.

So many people showed for the hearing on the proposed route of the East-West Expressway that the County Court room to the Music Auditorium.

An estimated 100 people came to make their views known. The meeting was held in the Music Auditorium.

Throughout the crowd there were about 10 or 12 homemade signs, printed with green and white placards, saying "Save Overton Park."

An effort was made to start the meeting at 10 a.m. at the County Courthouse.

Only a few people showed up for the hearing in the County Courthouse. The hearing was held in the Music Auditorium.

The hearing was held in the Music Auditorium. The hearing was held in the Music Auditorium.

The hearing was held in the Music Auditorium. The hearing was held in the Music Auditorium.

'Won't Be Ruled By Petitions,' Crowd Told

(Continued From Page 1)

The other 2 per cent is thru traffic, by trucks, tourists, etc. At this point, a woman stood up in the rear and said: "Will this (the expressway) go thru Overton Park?"



—Press-Scimitar Staff Photo

HERBERT BATES — State highway official explained background of expressway system.

sonal crack on me—that's all right."

He pointed at two maps—one, the park as it is, the other as it will be after the expressway.

"The reason we did not route it on Chelsea is because we would be putting it where people do not want it."

"There was a loud shout from the audience: "No."

Pollard said: "I don't mean people here. I will now discuss Overton Park."

Applause. "Our company is not insensitive to parks. We have dealt with parks thruout the U. S. and the world."

"It has been suggested the Expressway would destroy Overton Park."

'Zoo Untouched'

"The Zoo will be untouched. The wading pool will be un-moved. The athletic fields will be where they are now."

"The Expressway will take a 222 acres in the park now occupied by the zoo."

The Expressway would be a 140-foot-wide depressed strip. There would be screen planting and fences so there would be the appearance that the park is untouched.

"We are not destroying Overton Park."

Basically the effect on all the areas used at the park is zero.

The golf course, for example will also be in the same place.

Location

He said the Expressway strip would run where the bus route thru the park already runs.

He said Memphis must do something about its traffic, because it is doubling itself every 13 1/2 years.

He said plans are being laid for an Expressway between Memphis and Birmingham.

He said that by 1975 there will be great need for both expressways and wide streets in the northeast leg of the city and along Wolf River would take in Lay's mansions extending from Payne east from the park area.

He said these plans were "not dreamed up one dark night."

They are the subject of tomes of studies and man-years of planning and engineering time.

The hearing was also on the northeast perimeter route, but little interest was shown in that.

Leadership expressing the sentiments of both themselves and organizations spoke for and against the east-west expressway.

Some Comments

Sam Bates, representing Building Owners and Managers Association, in the interests of Memphis, we feel

we need the east-west expressway."

Palmer Brown, president of the Downtown Association: "Over the years the Downtown Association has been concerned with the fact that Memphis has lacked the east-west expressway so urgently needed. Memphis is an east-west city. We have seen other cities getting ahead of us because they have expressways. We feel that the route thru Overton Park will not destroy it or be detrimental, but will enhance the value of Overton Park to the citizens of Memphis."

T. G. Emmons, 1589 oCurt: "Wilmington, Del., lost \$215,000 in taxes when it built its expressway. Memphis will lose over \$1 million in taxes. Someone will have to pay that deficit."

C of C Spokesman

Roy Marr, president of Leader Federal Savings and Loan Association, speaking for the Chamber of Commerce: "The Chamber of Commerce board of directors has unanimously endorsed the expressway system, specifically the northeast and east-west segments. We believe the present expressway plans will serve the needs of Memphis and should be built at the earliest possible date."

G. B. (Pat) Joyner, speaking for the Traffic Advisory Commission: "Regarding the east-west segment, we seriously feel that it is poorly located, that the costs are astronomical and the benefits to the area questionable. The Bartholomew report on interstate expressways said they should not be routed thru areas where the costs are too high and the abutting areas will be hurt."

"The east-west segment drops traffic outside the downtown area onto already crowded city streets. The east-west segment studies were made six years ago, using the 1950 census. These plans are based on obsolete data."

Richard T. Ely, president of the Council of Civic Clubs: "The Council is on record urging expedition of the east-west expressway. We did not consider the question of Overton Park."

Frank Ragsdale, speaking for himself and as chairman of the Traffic Advisory Commission: "Nashville has five major expressway segments. It has numerous parks, and all were left alone. Memphis must give up two and a half miles of parkland for expressway right-of-way. Let the expressway stay their own way and not go thru park property in order to give free right-of-way on an already too-costly segment."

His Suggestion

Ragsdale suggested a complete circumferential expressway touching all highways and a realignment of the north-south expressway to follow Leader, Dale and Wellington, which are planned for widening.

Ragsdale said: "The population and growth of Memphis have not followed the trends planned by engineers five years ago. I think the east-west route would better serve Memphis if it were south of Southern Avenue."

Man Into Space Soon, Says K

By United Press International

MOSCOW.—Soviet Premier Khrushchey said today "we are confident that the time is not too far off when the first space-

ship with man aboard will dash into outer space." Addressing an agricultural conference at Abolinsk, in Siberia, he said: "We are living at a good time, comrades. Both on earth and in the boundless cosmic space, the boldest dreams of man are being made a reality."

Khrushchey said Soviet satellites, space stations and rocket now speeding thru space

towards Venus "are the achievements of our advanced science and technology, the achievements of the creative genius and industriousness of a free people. The relative little contribution by people is quantified in a number of products, mills, etc.

Get lined up

for the **EASTER PARADE**

CALL

KRAUS care gives your wardrobe a brand new look. Your spring coat, suit, hat, gloves, even shoes, clean and brighten up for Easter Parade!

KRAUS CLEANERS

Call JA 5-3311 before 2:00 P.M. for same day pick up. Or visit one of the twelve convenient branches.

Mail orders handled quickly for out-of-town customers.

OLD GRAND-DAD

Memphis Motorists... You May SAVE \$10 \$20 \$30 OR

might efforts them to this alone, res— of peo social d not are in then with p will...
Latin didn't end...
United help scope...
ment as we s ade- econ...
Inter- Social...
I have held several hearings myself...
ause...
was widely applauded...
Pollard then used a map...
He said all major streets would be...
Expressway would pass thru the...
He said the...
will send...
Speaker...
his farm...
include...
budget...
report...
week...
seen the...
ressional...
Easter...
proposals...
interest...
agencies...
ffer...
by...
step...
today...
by the...
C. B...
or...
some...
He...
Cher...
nitrec...
been...
yet...

Memphis Motorists... You May SAVE \$10 \$20 \$30 OR

'Won't Be Ruled By Petitions,' Crowd Told

(Continued From Page 1)

The other 2 per cent is thru traffic, by trucks, tourists, etc. At this point, a woman stood up in the rear and said:

"Will this (the expressway) go thru Overton Park?" Pollard answered "yes."

Bedlam, 'No!'

Then she spoke loose. The shouts of "No, no, no" filled the hall. About 10:30 p.m. and shouted. "Why can't you go down Union or Poplar?" one demanded.

"We're not hearing anything new. Let's talk about Overton Park," from another. Moulton made an effort to restore order, but failed, and the demonstration continued for several minutes.

It gradually subsided, but didn't end. Pollard continued, but not as many people were willing to talk and hear.

At this date, the Traffic Advisory Commission's report came on stage. Moulton's microphone was used.

The way to hold a public hearing with a million people is to what people have to say.

I have held several public hearings myself."

House

The speaker was widely applauded, and the commotion subsided. Pollard then used a map as a pointer to explain in minute detail present plans for the Overton Park area.

He said all major streets would be widened and the Expressway would pass thru a depressed area wherever possible.

He said the Expressway would be a depressed area wherever possible. He said the Expressway would be a depressed area wherever possible.

Renewed Demands

There were several shouts from impatient people. When he was going to discuss Overton Park.

Moulton, taking the mike from the speaker, told the people: "This is a public hearing on the economical and engineering feasibility of the expressway routes."

"We are not going to be swayed by petitions, demonstrations, hysteria, louds and shouts."

Pollard then began explaining the route the Northeast leg, and West River, would take. It extends from Payne east to the river.

He said these plans were "not dreamed up one dark night. They are the subject of some studies, and man-years of planning and engineering time."

The hearing was also on the northeast perimeter route, but little interest was shown in that. Individuals expressing their sentiments, both themselves and organizations spoke for and against the east-west expressway.

He said the Expressway would be a depressed area wherever possible. He said the Expressway would be a depressed area wherever possible.

Subject: Overton

He said, "I don't mind the people talking about Overton Park. I don't mind the people talking about Overton Park. I don't mind the people talking about Overton Park."



—Press-Scimitar Staff Photo

HERBERT BATES — State highway official explained background of expressway system.

sonal crack on me—that's all right."

He pointed at two maps—one, the park as it is, the other as it will be after the expressway.

"The reason we did not route it on Chelsea is because we would be putting it where people do not want it."

There was a loud shout from the audience: "No!"

Pollard said: "I don't mean people here. I will now discuss Overton Park."

Applause. "Our company is not insensitive to parks. We have dealt with parks thruout the U. S. and the world."

It has been suggested the Expressway would destroy Overton Park.

'Zoo Untouched' "The Zoo will be untouched. The wading pool will be un-moved. The athletic fields will be where they are now."

The Expressway will take a 140-foot-wide depressed strip. There would be screen planting and fences so there would be the appearance that the park is untouched.

We are not destroying Overton Park. Basically the effect on all the areas used at the park is zero.

The golf course, for example will also be in the same place.

Location He said the Expressway strip would run where the bus route thru the park already runs.

He said Memphis must do something about its traffic, because it is doubling itself every 13 1/2 years.

He said plans are being laid for an Expressway between Memphis and Birmingham.

He said that by 1975 there will be great need for both expressways and wide streets in the center of the city and in East Memphis, extending from Payne east to the river.

He said these plans were "not dreamed up one dark night. They are the subject of some studies, and man-years of planning and engineering time."

The hearing was also on the northeast perimeter route, but little interest was shown in that. Individuals expressing their sentiments, both themselves and organizations spoke for and against the east-west expressway.

He said the Expressway would be a depressed area wherever possible. He said the Expressway would be a depressed area wherever possible.

He said the Expressway would be a depressed area wherever possible. He said the Expressway would be a depressed area wherever possible.

Some Comments Sam Bates, representing Building Owners and Managers Association, stated interests of the future of Memphis, we feel

we need the east-west expressway."

Palmer Brown, president of the Downtown Association: "Over the years the Downtown Association has been concerned with the fact that Memphis has lacked the east-west expressway so urgently needed. Memphis is an east-west city. We have seen other cities getting ahead of us because they have expressways. We feel that the route thru Overton Park will not destroy it or be detrimental, but will enhance the value of Overton Park to the citizens of Memphis."

T. G. Emmons, 1589 1/2 Curt: "Wilmington, Del., lost \$215,000 in taxes when it built its expressway. Memphis will lose over \$1 million in taxes. Someone will have to pay that deficit."

C of C Spokesman

Roy Marr, president of Leader Federal Savings and Loan Association, speaking for the Chamber of Commerce: "The Chamber of Commerce board of directors has unanimously endorsed the expressway system, specifically the northeast and east-west segments. We believe the present expressway plans will serve the needs of Memphis and should be built at the earliest possible date."

G. B. (Pat) Joyner, speaking for the Traffic Advisory Commission: "Regarding the east-west segment, we seriously feel that it is poorly located, that the costs are astronomical and the benefits to the area questionable. The Bartholomew report on interstate expressways said they should not be routed thru areas where the costs are too high and the abutting areas will be hurt."

"The east-west segment drops traffic outside the downtown area onto already crowded city streets. The east-west segment studies were made six years ago, using the 1950 census. These plans are based on obsolete data."

Richard T. Ely, president of the Council of Civic Clubs: "The Council is on record urging expedition of the east-west expressway. We did not consider the question of Overton Park."

Frank Ragsdale, speaking for himself and as chairman of the Traffic Advisory Commission: "Nashville has five major expressway segments. It has numerous parks, and all were left alone. Memphis must give up two and a half miles of parkland for expressway right-of-way. Let the expressway stay their own way and not go thru park property in order to give free right-of-way on an already too-costly segment."

His Suggestion Ragsdale suggested a complete circumferential expressway touching all highways and a realignment of the north-south expressway to follow Lauderdale and Wellington, which are planned for widening.

Ragsdale said: "The population and growth of Memphis have not followed the trends planned by engineers five years ago. I think the east-west route would better serve Memphis if it were south of Southern Avenue."

Man Into Space Soon, Says K

By United Press International

MOSCOW—Soviet Premier Khrushchey said today "we are confident that the time is not too far off when the first space-

ship with man aboard will dash into outer space." Addressing an agricultural conference at Akbulinsk, in Siberia, he said: "We are living at a good time, comrades. Both on earth and in the boundless cosmic space, the boldest dreams of man are being made a reality."

Khrushchey said Soviet satellites, space stations and a rocket now speeding thru space

towards Venus "are the achievements of our advanced science and technology. The achievements of the creative genius and industriousness of a free people."

The relative little consumed by people, but quantities fed is a sign of production, millions of tons.

Get lined up

for the **EASTER PARADE**

CALL

KRAUS care gives your wardrobe a "Brand New" look.

Your spring coat, suit, hat, gloves, even shoes, clean and bright for the Easter Parade!

KRAUS
CLEANERS

Call JA 5-3311 before 2:00 P.M. for same day pick up
Or visit one of the twelve convenient branches

Mail orders handled quickly for out-of-town customers

OLD GRAND-DAD

Memphis Motorists ... You pay
SAVE \$10 \$20 \$30 OR