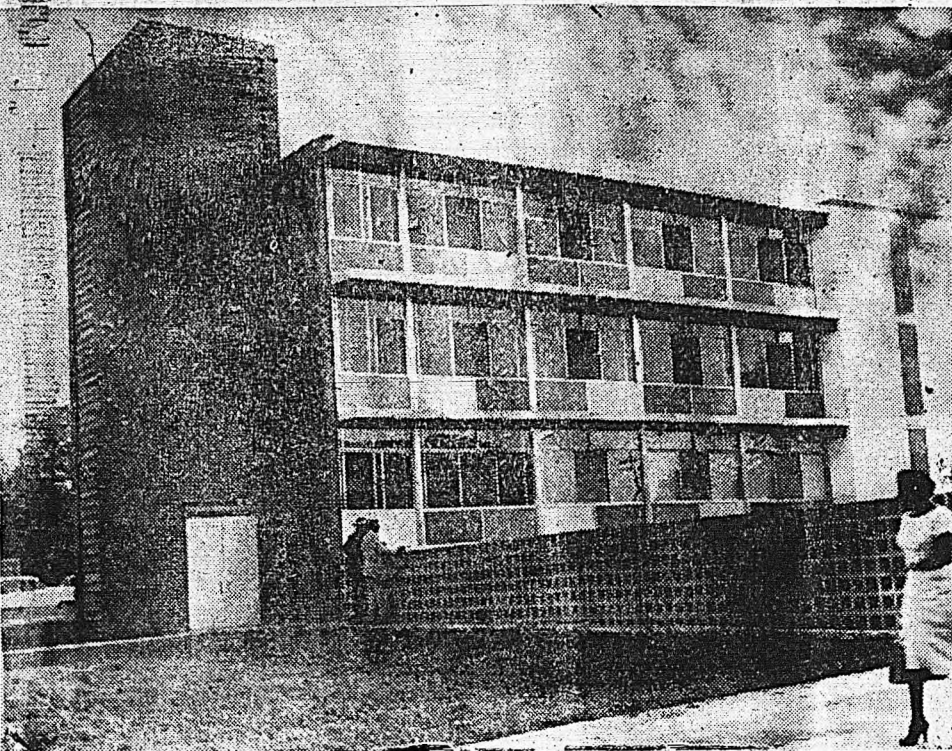


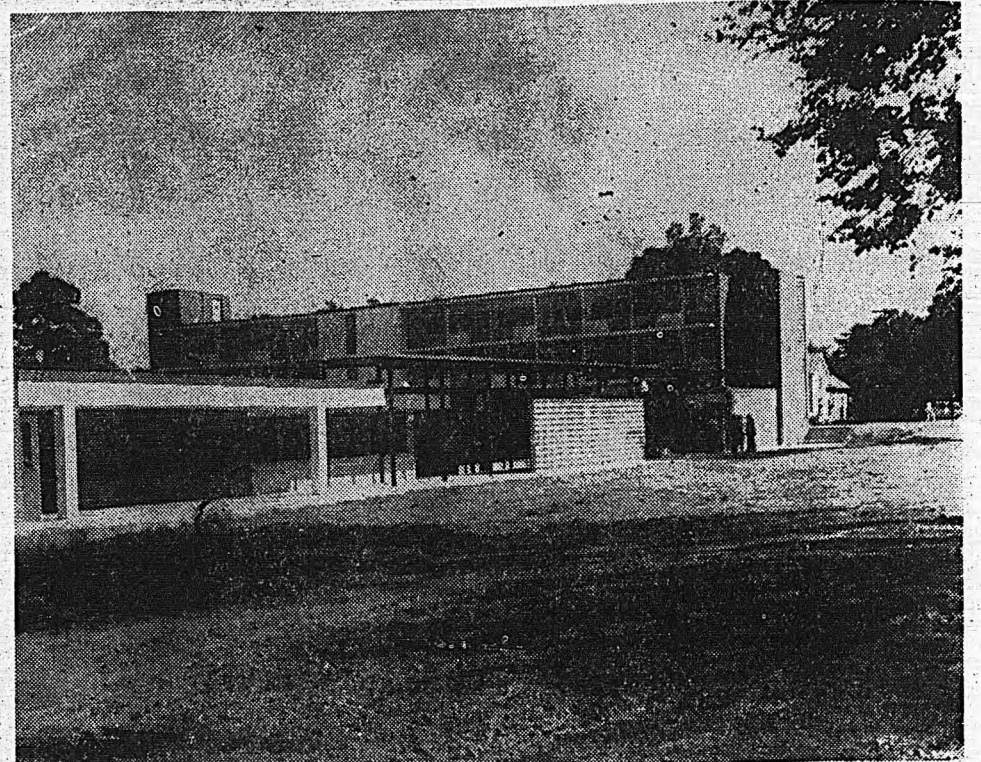
— Philander Smith College, Little Rock, Arkansas —



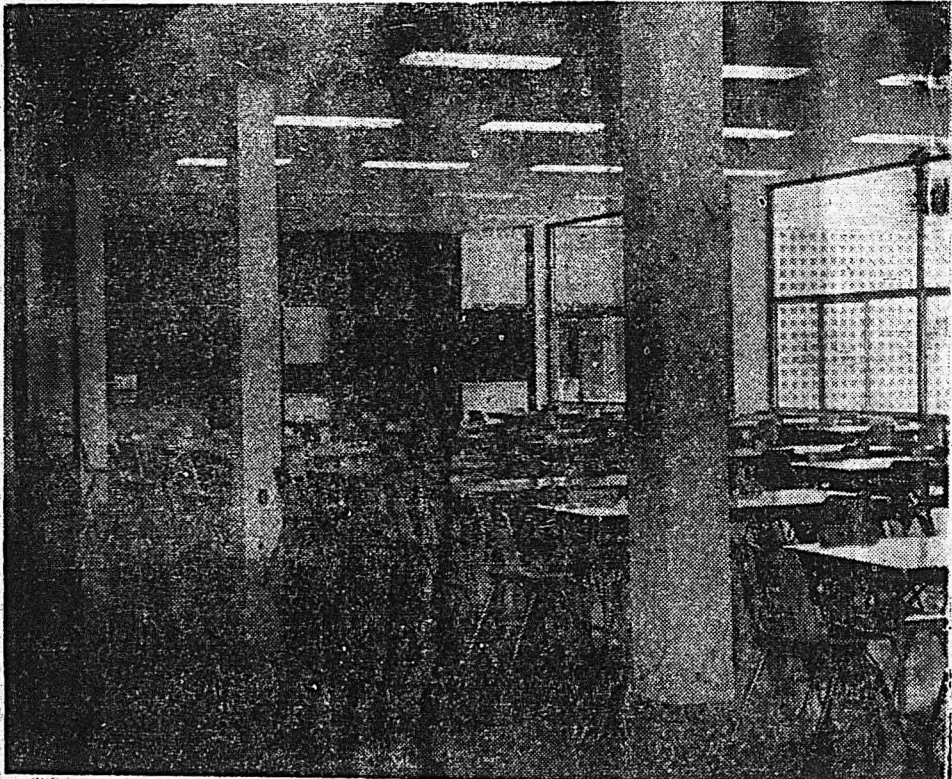
A WING OF THE NEW ULTRA MODERN DORMITORY — The new dormitories for women and men which are separated by a student dining room and lounge, provides accommodations for 250 persons. The walls in the dormitory rooms are finished in various pastel colors with a maximum of natural light from a window as wide as the room.



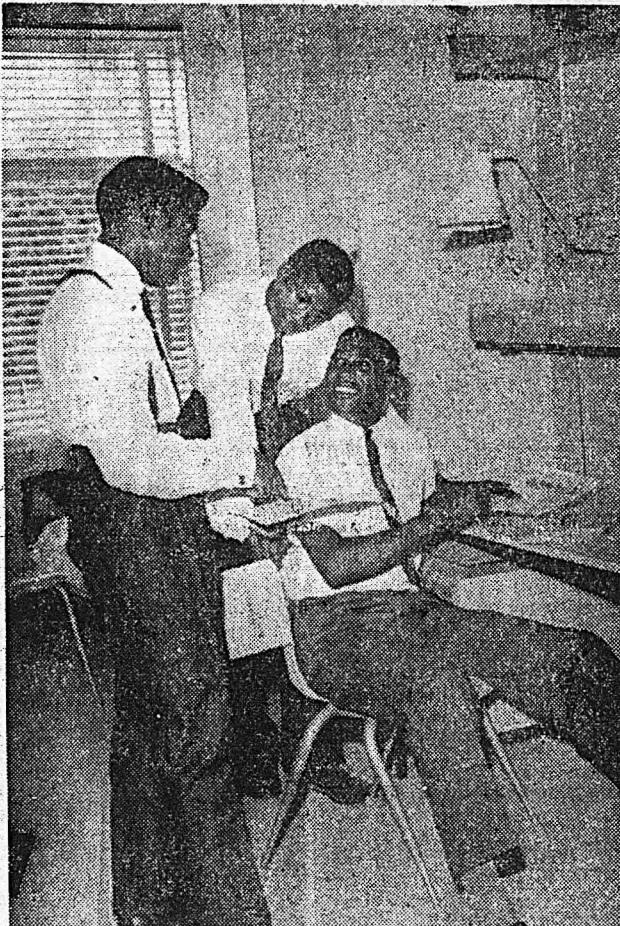
A STUDY HALL — These women students are taking advantage of the study hall found on each floor of the three-story dormitory, constructed of brick, block, steel and glass.



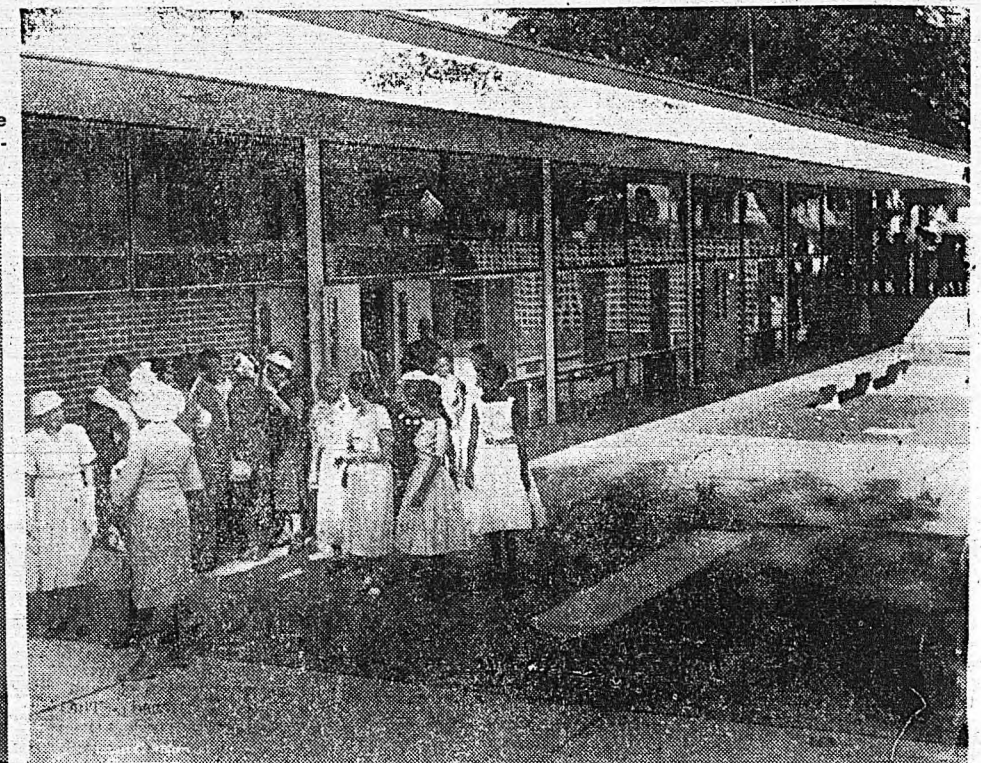
ANOTHER WING OF A DORMITORY — The two dormitories and other facilities were constructed and furnished at a cost of approximately one million dollars. Aside from the sleeping quarters in dormitories, there are study halls, lounges and storage rooms.



DINING ROOM AREA is equipped to serve a maximum of 600 persons. Included in this student facility are provisions for a Snack-Bar and Fountain accommodations.



A TYPICAL ROOM IN MEN'S DORMITORY — These three male students have already made themselves "at home" in the new plant. Each room is equipped with a desk, bookshelf, dressing mirrors; individual closets, chests, hat and shoe locker and "Hollywood-type" beds.



"OPEN HOUSE" GUESTS — This photograph shows a group of the hundreds of guests who toured the new building during Open House last Sunday. The photo shows an exterior scene of the Student Union which opens onto a beautiful patio.



METHODIST CHURCH DIGNITARIES AND BOARD MEMBERS — At the "Open House" were many persons who figure significantly in the operation of the college. Viewing the building are, left to right: Mrs. Ewing Wayland, who was representing her husband, who is vice chairman of the college's board of directors; President

and Mrs. Harris, Bishop and Mrs. Paul E. Martin of the Arkansas and Louisiana district of the Methodist church. Bishop Martin is a member of the college's board of directors; and Mrs. Ed Galloway, who is representing her husband who is a board member.

Philander Smith College In Open House Sunday

The 92-year-old Philander Smith College in Little Rock, Ark., made a giant step last Sunday when it held "Open House" to show the public the completed product of a \$1,500,000 building program. The completed product included two modern dormitories, a student union, a dining-room, book store, a post office for students, and conference rooms for students and faculty members.

This is only the first step in the proposed development program of

the college. The next phase in the building program will include a library-fine arts center, which is expected to be completed by June 1960. Approximately 60 percent of the necessary funds are now available. The other part will be sought from the generous people of greater Little Rock.

These facilities will not only serve the college's students and faculty, but will be available to the community. It will be a meeting place for civic and church groups, educational and community organ-

izations.

Heading this progressive educational institution for 23 years is tall, robust M. Lafayette Harris. When President Harris was asked what are his long-range plans for the college, he replied:

"To build a college which will meet the needs of students, based upon our interpretation of the philosophy of education which is designed to emphasize leadership and a sense of responsibility in a democratic society. We believe that this can be accomplished by coun-



SECTION OF THE SPACIOUS STUDENT UNION — Surveying the beautiful lounge are two students. The conveniently located lounge opens to a beautiful patio which is readily accessible from both dormitories. The student union carries out a contemporary motif in furnishings.

selling and giving leadership which will enrich the quality of education by encouraging personal responsibility.

The college, under the auspices of the General Board of Education of the Methodist Church in Nashville, Tenn., stresses "Christianity,



PRESIDENT M. LAFAYETTE HARRIS is being congratulated on the new structure by Mrs. E. D. McFarlin, an alumnus of the college and an Urban Renewal consultant cooperating in the construction of the project. Others in the photo are William Arnett, mayor of Kinlock, Mo., an all-Negro town; Andrew Bradfield, chairman of

the board of aldermen in Kinlock; Stephen Irving, vice chairman of the land-clearance committee in Kinlock; John O'Guin, Commissioner of Public and Land Clearance in Kinlock; and Mrs. A. C. Crater, hostess to the group, who figured in the construction of the new facility.

love, hard work, learning, truth and knowledge," which are believed to be necessary to make a human's intelligence effective socially and spiritually.

Approximately 1,150 students are expected to enroll at the college this fall. The college limits its enrollment in order to stress quality rather than quantity in education. Enrollment is increased as rapidly as facilities and faculty members can be acquired to maintain "quality" in education.

Philander Smith College is a private church-sponsored school. Yet it is non-sectarian. It is accredited by the North Central Association of Colleges and Secondary Schools, the American Council on Education, the Association of American Colleges, the Association of Colleges and Schools of the Methodist

Church, the National Council on Accrediting of the National Collegiate Athletic Association.

Since 1953 the college has been operating under a "New Program" under which the faculty undertake a major evaluation of the total program of the college every eight

years, with emphasis upon curriculum and revision of techniques to facilitate the effectiveness of instruction resulting from each study.

To put it simply, Philander Smith College is attempting to provide an adequate area for educating students today for a better tomorrow.

THE SUPPLIANT

By GEORGIA DOUGLAS JOHNSON

Long have I beat with timid hands upon life's leaden door,
Praying the patient, futile prayer my father prayed before,
Yet I remain without the close, unheeded and unheard,
And never to my listening ear is borne the waited word.

Soft o'er the threshold of the years there comes this counsel cool:
The strong demand, contend, prevail; the beggar is a fool!

