

The Sou'wester

Southwestern at Memphis

33

33rd Year

MEMPHIS, TENNESSEE, SEPT. 22, 1951

Vol. 34 No. 1

Fall Fashion Show Given By YWCA

The annual YWCA fashion show was held yesterday afternoon in Hardie Auditorium. Julius Lewis furnished the clothes and Southwestern sororities furnished the models.

Y members entertained the audience also with a tea which was held in the cloister in conjunction with the show. Mrs. James Ries was mistress of ceremonies as clothes for the college girl were shown.

Modeling the fall fashions were: Sara Jane Bryant, Mary Ann Henderson, Barbara Curtis, Mary Ann Wiseman, Juliette Reed, Marilyn Mitchell, Mary Nell Wendt, Betty Lou Collins, Eleanor Brown, Ho Pickens, Ann Marie Davis, Jean McFarland, and Jane Wittichen.

Rosemary Nelms and Sis Moore were in charge of the arrangements. Committee Chairmen were: tickets, Ann Henderson; food, Julia Skinner; prizes, Virginia Ozier; Models, Mary Nell Wendt; and decorations, Yvonne Harris. Mrs. Margaret H. Townsend and Mrs. Ralph Hon are advisors of the YWCA on the campus.

Great Books Course To Train Leaders

Southwestern's Division of Adult Education will sponsor a leadership training course in Great Books as a part of the program of The Great Books Foundation of Chicago. Classes will meet on seven consecutive Monday nights beginning Oct. 29.

The course is designed to provide discussion leaders for Great Books study groups in Memphis and the mid-south. These study groups will be composed of adults who will meet on Monday nights to discuss selections read during the preceding week. The Great Books Foundation provides reading lists and coordinates the program.

Every one interested is invited to take the course. Information or free literature may be obtained from the office of Prof. John Osman who will direct Southwestern's program.

In addition to the leadership course the college will offer the regular Great Books course which has been conducted here with variations for the last six years.

Students Send Used Books To Japanese

Last spring 250 pounds of books were collected by Southwestern students and sent to Shikoku Christian College, Japan. These books were given by students here to enlarge the English library of this new liberal arts school.

Ann Taylor Walker was in charge of the collection.

Mr. James Cogswell, Southwestern alumnus and professor at Shikoku College, asked for donations of books of any language and subject in order to develop a much-needed library. The books, in twelve 22-pound boxes, were mailed during the first of the summer months.



Rushing Rules Are Announced By Pan

Severe Penalties Will Be Enforced By Council

The Pan-hellenic Council for both sororities and fraternities have announced rushing rules for this year. The rules are slightly changed because of the program of first week rush.

Pan members advise that everyone is fully familiar with this year's rules, since ignorance is no excuse for violations.

These rules are binding for all unaffiliated new women students and all women affiliated with sororities.

1. New students may not spend the night with women affiliated with sororities.

Penalty: Three girls off quota of offending sorority.

2. No money shall be spent on new students by women affiliated with a sorority or vice versa except when approved by the Pan Council.

Penalty: three girls off quota of offending sorority.

3. New students shall enter sorority houses only for student body events.

Penalty: three girls off quota of offending sorority.

4. No student unaffiliated with a sorority shall be invited to any sorority social function before the date of pledging unless the entire student body is invited.

Penalty: three girls off quota
(Continued on Page 3)

NOTICE

There will be a meeting of the Sou'wester staff this afternoon, Sept. 22, at 1:30 in the Sou'wester office. Every one who is interested in working on the paper in any manner and degree is urged to be at this meeting. Freshmen, experienced or not, will be welcome.

The office is under the dining hall, next to the Lynx Lair.

Freshmen are in line again. This time it is to see the list of faculty advisers posted on Little Nell.
—Staff Photo by Al Clemens

Student Counselors Entertain New Girls

Freshmen Introduced To Upperclassmen

The women student counselors entertained their counselees in the playroom of Voorhies Hall on Monday Sept. 17. This informal party was the first official party of the 1951-52 social season.

The entertainment, which lasted from 8 to 10 p.m., is given every year.

Each new student was pinned with an identification card as she arrived. The guests were then directed to the refreshment table which was supervised by Mary Nell Wendt.

Sara Jane Bryant, chairman of the student counselors, introduced the special guests who included Mrs. M. H. Townsend, Dean of Women; Professor Eleanor Bosworth, Assistant Dean of Women; Miss Ann Brown, Assistant to the Dean of Women; Miss Sue Wills, Women's Physical Education Director; Mrs. T. F. Conn, Resident Head of Voorhies Hall; and Mrs. India Rutland, Resident Head of Evergreen Hall.

Get acquainted games, planned and presented by Patricia Riegle, introduced the students to each other and provided an evening of good fun.

Following the games the officers of several campus organizations were introduced to the new students. A few remarks were made to acquaint the girls with the purposes of the organizations. Frances Freeman represented the Y.W.C.A.; Sue Pingree, the W.A.A.; Betty McFadden, Torch; Helen Swartzfager, the Women's Undergraduate Board; and Betty Sue Wilcox, the C.U.C.

Student Nurses Will Take Five Courses

Thirty student nurses are expected to enroll in classes here this fall. They will take a full five courses, although receiving no college credit for them. Thirteen other nurses finished four of the courses this summer.

The nurses, from the Methodist Hospital, will study anatomy and physiology, micro-biology, sociology, psychology, and chemistry. The thirteen, who took the first four subjects in summer school, will form a separate section for chemistry.

The courses are a part of the training given by the hospital in cooperation with Southwestern. The nurses have finished varying amounts of schooling, and will not be classified.

TKA Topic, Program For Year Announced

Tau Kappa Alpha, National Honorary Forensic Fraternity, seeks to promote interest in the art of public speaking among the student body by sponsoring debates, discussion groups, and other types of speech activities.

This year, the topic for debate is "Resolved: That the United States should adopt a permanent policy of wage and price controls." And the discussion topic is "How can we as a nation improve our moral and ethical standards?"

Hoping to build up the Southwestern Chapter of TKA, Prof. Raymond S. Hill, Forensic Coach, invites everyone who is interested in pledging to this honorary fraternity, to meet with him and discuss the program for the year. It is not necessary to have done work of this kind before, but those who have experience are especially urged to participate.

Prof. Hill may be reached during the day at his office in the Speech Building.

Sororities Plan Rush Parties

First Week Rush Brings Gaiety

After scurrying around, cleaning houses, calling meetings and making big plans, the sororities are about to open their rush season. Rushees will be ushered around to the sorority houses for the three evenings of the entertainment.

Each house will provide an imaginative setting. On Wednesday night, September 26, Alpha Omicron Pi will welcome the rushees to their "Holiday Inn." Kappa Delta will transport them to the days of the "Old West" with their "Pink Garter" party. Whooping it up at a "Country Fair" will be the Chi Omega's.

Upon entering the Tri Delta's house a new world of "Storyland" comes to life. The "Persian Bazaar" becomes real at the Zeta Tau Alpha house completing the evening of entertainment.

The activities of the following night will not prove so frivolous but will be equally as entertaining since the sororities plan to relax the pace a bit. Kappa Delta has on the agenda their "Traditional Tea." Chi O., Zeta, A O Pi, and Tri Delta all plan informal coke parties.

The final rush parties will be the most formal of the series. All the sororities have tea's planned. Zeta will entertain with a Starlight Tea; Kappa Delta with her White Rose Tea; Tri Delta with a White Pearl Tea; Chi Omega with a White Taper Tea; and Alpha Omicron Pi with her Red Rose Tea.

Burrow Library To Be Started Soon

Contracts for the building of Southwestern's Burrow Library were signed on Sept. 12 in the offices of architects Walk C. Jones and Walk C. Jones Jr. Construction will begin "immediately."

The Harmon Construction Company of Oklahoma City, Oklahoma, low bided of nine companies, has been awarded the job. While the actual bid was not released, the project as planned will cost more than \$600,000.

Mr. and Mrs. A. K. Burrow made the new library possible through their generous gift to the college in June of 1950.

Materials for the building have been allocated by the National Production Authority. Eighteen to twenty months will be required to complete the new library.

Chapel Plans Changed Only In Dates, Program Emphasis

Few changes will be made in the chapel arrangement this year. Worship services will be held on Monday, Tuesday, and Thursday, and announcements on Wednesday.

Friday will be left open more freely than last year for different kinds of programs, including the musical ones. Plans are being made for more student participation in the worship services, and for a greater variety of outside speakers.

The Sou'wester

MEMPHIS, TENNESSEE
ESTABLISHED 1919
PUBLISHED WEEKLY
By The
STUDENTS OF SOUTHWESTERN



Memphis, Tenn.

Entered as second-class matter at the post office in Memphis, Tenn., under the act of March 3, 1948.

Subscription Rate: \$1.50 per semester or \$2.25 per school year. Published weekly except during vacations and examination periods.

Editor.....BETTY WOOD
Business Manager.....GEORGE WILSON
Managing Editor.....RITA CUNINGHAM
Reporters.....TOBY HORN, PAT RIEGLE,
HENRY FREUND
Columnists.....ROSCOE FIELD, KATHERINE HINDS
Photographer.....AL CLEMENS

Freshmen, As Usual

Freshmen are a yearly event. Somehow, though, every new class of college beginners seems different, and each is better than the one before. Each class has some new special characteristic to add to the school and to the meaning of campus life. School is just one big group of people working toward the same goal—education, in a happy, useful, well-rounded fashion.

New students may feel lost in the rush of a new place, new people, new patterns of study, but it is no unusual feeling. All of us have experienced it as freshmen and, more mildly, as upper classmen coming back after a short three months at home. No one need feel over-whelmed or embarrassed about a feeling of being temporarily out of place or about a touch of homesickness. It happens to the best of us.

Southwestern is a school where each individual has a chance to make his own place and to start building his own life just as he wants it. But every individual must work to find the place he wants, the balance of work and play, of study, sports, club participation, social activity, and loafing, which best coincides with his taste and judgment. Aristotle says that there is a golden mean for things that vary. As indefinite as such means are, each person must find his own, his balance of living. If you are in doubt, here at Southwestern, as to the mode of reaching your mean or ideal, others will be glad to help you. That is why you have student counselors and faculty advisors. They have been selected because of their understanding of the problems which new students are likely to have. After all, they had the same problems not very long ago. Southwestern is proud of its individual methods, just as it is proud of its individuals.

Policy For The Year

Here is the general policy of The Sou'wester as decided upon by the Student Publication Board of Southwestern. It is required that this statement of policy be printed in the first edition of The Sou'wester each year.

1. The Sou'wester will, at all times, be the honest voice of the Southwestern student body, of the faculty, and of the various administrative bodies.

2. The Sou'wester will not be a "gripe sheet" to air personal grievances or campaigns.

3. The Sou'wester will, in a responsible manner, accuse, defend, or promote as the situation may be. This activity will, at all times, be conducted on a highly constructive plane.

4. The Sou'wester will not contain columns of the "back fence gossip" types. Campus social news will be featured in sorority and fraternity columns especially reserved for the purpose, and in other articles as the editor sees fit. Cheap tales and personal tattling concerning the social lives of the students or faculty will have no place in The Sou'wester.

5. The duty of the editorial staff of The Sou'wester will be to inform, criticize, and recommend, in a straight forward, constructive, and unbiased manner.

6. There will be no racial or religious prejudices expressed in the pages of The Sou'wester.

An Open Letter To Freshmen

On behalf of the student body of Southwestern College, let me extend to you a cordial and sincere greeting. With this greeting I want to wish each and every one of you four years of great achievement, success, and happiness.

The fact that you have chosen Southwestern as your college, and that you have been accepted gives us confidence that you will guard wisely the honored traditions to which you fall heir. The most sacred tradition which you inherit is that of personal honor. Upon the rock of this priceless virtue Southwestern has organized its student life, built its democratic government and founded its Honor System.

There are four qualities that mean a great deal to the Southwestern student. (1) Friendship on the campus, here is a real and genuine part in the life of a student. Make friends with as many people as you can and be friendly towards everyone. (2) There is a homelike religious atmosphere at Southwestern that I feel sure will mean much to you if you will allow it to.

(3) The Honor System at Southwestern is one of our most cherished possessions and you will be expected to uphold it. (4) Scholastic work is, of course, the main reason you are coming to college. Let me impress on you the importance of getting off to a good start.

In college, as in most things, you get out what you put in. Keep in mind throughout your stay here that there is much that Southwestern can give you; and that she, in turn, has the right to expect your most diligent work and your fullest cooperation.

Let me again wish you the very best of success and happiness. I am looking forward to meeting every one of you.

Sincerely yours,
Lindsay H. Stephenson
President of Student Body

Warmack, Violinist, Added To Faculty

Mr. Donald L. Warmack will teach violin at the College of Music beginning this fall. He will replace Mrs. Mary Jane Kirkendol, who has moved to Charlotte, North Carolina, to join her husband.

Professor Warmack received his Bachelor of Arts and Bachelor of Music from Hendrix College at Conway, Arkansas, in 1948. His graduate work was done at the University of Southern California, where he was awarded his Master's degree in 1949.

In 1951 he won the National Federation of Musicians Clubs Auditions. A recital will be given by Mr. Warmack early in October.

Miss Jane Soderstrom returns to Southwestern's Music Department to teach piano. She has been studying for her Master's degree at Mills College, Oakland, California.

"George And Margaret" To Be Players' First

With a full schedule before them, the Southwestern Players will present on October 19 and 20 their first production of the 1951-1952 season—*George and Margaret*.

The eight roles are open to anyone in the student body who wishes to try out for them. No previous experience is necessary; so if you are interested, contact Prof. Raymond S. Hill, director of Players, in the speech building any time.

To A New Class . . .

Campus men and women are made, not found. There is no such thing as a grammar school major-domo on a college campus. Do not misquote the idea! There is a certain freshness that springly nods its beanie across the green lawns and beneath the stony buttments. Wits are clear and solid, Hearts are warm to an idea; that campus life can be gay. And it *can*.

Here are found the Fraternity and the Sorority, deeply seated in the wisdom of the lofty nod, and extended warm hand, and perhaps, as an example of constructed thinking, the gentleman attired in tux and a lady in an unapproachable beautiful hoop skirt, shuffling away at some sweet musicked ball.

Or, if you be a thespian, "To be or not to be . . ." we produce! Yes, we produce magnificent productions rivaling Broadway or the Portsmouth Summer Stock Company. We, THE PLAYERS, the court of legitimate stagers invited you to join. Drift into a college production and you'll live three times the excitement and color of greasepaint you've dreamed about.

But you've got to work at your play to feel it. Spirit . . . spirit comes when you see *that* team parade spike footed onto the field and the band kicks up John Philip Sousa. It's a laughing time or a crying time, but it can be the time of your life if you want it to be. The roar that tumults from the crowd is you . . . you in dismay as Tommy Trip-up runs toward the wrong goal . . . you in a feather bob as John packs the leather for old SC, and you, *by gar*, under the goal posts at the end of the game . . . lifting up!!

And studies are at the other end. Standing there hard and challenging, they present a novel mystery to the Frosh. It can be solved slicker than an eel in a lard bin.

Set up a system, learn it into a habit, practice it on your curricular, concentrate on the superlative, and sleep well in the morning light. Simple? I'll say not, because you don't have the key to the situation.

When you play, play until you're played out; when you laugh, laugh as if you loved life; when you love, love as Adam and Eve; When you study; remember that you've played, laughed, and loved . . . and then it is time to work.

By Al Jacobson

Gibbs Return After Three Years' Study

Rev. Norman B. Gibbs has been appointed assistant professor of Bible and philosophy. He was assistant professor of Bible at Southwestern in 1947, and he returns after a three year leave of absence.

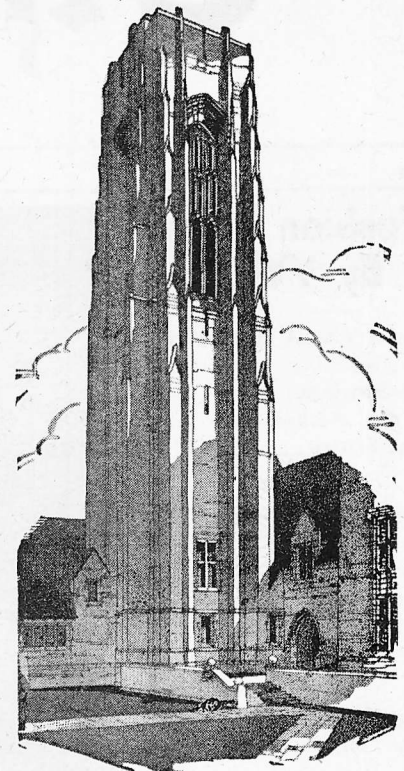
Prof. Gibbs has been at Duke University completing work on his doctorate of Bible and philosophy. He expects to receive his degree in June 1952.

After graduating from Southwestern with honors in Greek and English in 1932 Prof. Gibbs studied at Louisville Presbyterian Theological Seminary for his Bachelor of Divinity. He worked on his Th.M. at Union Theological Seminary in Richmond, Va.

During World War II Prof. Gibbs served as an Army Air Force Chaplain. He attained the rank of major while in the Air Force. Following the war he headed the department of Bible and philosophy at the College of the Ozarks, Clarksville, Ark.

In addition to his faculty position, Prof. Gibbs will be an advisor for the Christian Union Cabinet and other campus religious organizations.

Chapel Chimes



By Betty Sue Wilcox

From the trend of conversation at the Christian Union Cabinet's retreat last weekend, there are definitely big things in store this year. One of the major changes will be in the traditional Dorm Prayer Meetings.

Each Wednesday night students from all the dormitories—and town too—will meet in Voorhies basement at 6:30 p.m. for a short meeting of hymn singing and inspiration. The Forums also should prove to be outstanding, the first to be held on October 3 at 3:45 p.m. and entitled "Will Southwestern change your Faith?"

Presuming that you have BEEN to the library already this year and that you will be there again—note soon the new shelf sponsored by the Christian Union, full of worship material and other religious matter.

You who attended the Hearth Supper know something of the work of the Cabinet and we hope that you will want to work on one of our committees this year.

At College it IS a temptation to sleep late on Sundays, but we hope that you will start the year off right by attending the church service in Hardie Auditorium tomorrow morning or the church of your choice.

Recently there came into our hands a copy of Benjamin Judd's "A Student's Creed." Wishing to share it and thinking that many of you would want to read it, we are printing it here for your use. I believe in God without reservation.

I believe that all things scientifically true are of God.

I believe in Jesus Christ as the Revelation of God to man.

I believe His interpretation of God as our Father, and completely trust Him with my life and with all that I possess, both in the present, and in the life to come.

I believe His will for me is to live in health, in peace and in material sufficiency, and in harmony with His law and love.

I believe that in Christ I can live victoriously; that no condition in life is too great but that He and I can conquer.

I believe that I am to live in forgiveness, purity, and trust; that I am the channel through which His will is to be done on earth as it is in Heaven.

I believe in the kingdom of God, and I accept it without race, class or social reservations.

I believe that this world is made for the kingdom of God.

I believe that I can best find God in quietness, in prayer, and in the service of others.

I believe in affirmative and creative living.

I believe that my life should be a demonstration of my confession.

I believe that I should be severe with self, gentle with others, honest with all, renouncing all secret criticism of others.

I believe that I should keep myself ready for divine guidance at all times.

—Benjamin F. Judd

The churches of Memphis all welcome Students, both old and new to their services. In order that freshmen may know what churches are close to the school or a bus line, here is a short list of churches of several denominations.

The official college church is Evergreen Presbyterian Church, which will soon be located across
(Continued on Page 3)

A Good Job in Fargason

Apples and roses to Coach Bill Maybry for the work done on the gym and track this summer. It is about time the school showed a little extra appreciation for the varsity teams, and a separate varsity room has long been needed. The paint job has given the old building a brand new feeling, on the inside anyway. Keeping present equipment and facilities repaired and in good working condition is no little task in itself. Coach Maybry sparked the program of improving the shower room, the general clean-up of the gym and the revisions in the system of management. Let's see more of this constructive activity around the campus this year.

Palmer Traffic Vs. Us

Now that a new crowd of Freshmen and transfers have arrived at Southwestern, an old problem is bound to turn up again. How do you get up and down those Palmer stairs? In the terrific rush between classes somebody, and often several somebodies, gets stuck trying to fight his way against the current.

It would be easy enough to form the habit of going up one set of stairs and down another when classes are changing, if everyone would form the same habit. Maybe the Student Council could legislate some directions. We could go up the south side and down the north. If made a part of freshman regulation, it would be easy for the whole student body to join in. Think of the saving in time and broken toes!

I do not want to suggest an unnecessary

CHAPEL CHIMES

(Continued from Page 2)

the street, on the corner of University and Tutwiler. In the meantime, church members will come by in cars for students at 9:20 Sunday morning. Services are held in the old building at Autumn and Dickinson.

First Presbyterian Church of Memphis is located downtown at Poplar and Third. It can be reached by riding the Lamar-Faxon bus to Poplar, and walking two blocks east.

McLean Baptist Church is on the corner of McLean and Jackson, within easy walking distance. Speedway Terrace Baptist Church is on the Lamar-Faxon bus line, at Bellevue.

Methodists are invited to Trinity Methodist Church at Galloway and Evergreen. One may take the Lamar-Faxon to Evergreen and walk South.

The Episcopal Church of the Good Shepherd is located on Jackson at University. Calvary Episcopal is downtown on Second at Adams.

Lindsay Memorial Presbyterian Church, U.S.A., is on Tutwiler, and is reached also by the Lamar-Faxon bus.

rule. Southwestern students are old enough to order their own lives. A useful example is easy to follow if someone will set the example. This only takes a little agreement and coordination on the part of the student body.

Yet we do need some solution to the problem of congestion in the halls and on the stairways. Let's ask our Student Council to release a notice about the ups and downs of Palmer. Maybe we can stay unbruised for the rest of our four years.

Glenn A. Johnson Will Head Athletic Division This Year

Intramural Program Not To Be Changed

The intramural program for the 1951-52 season will be substantially the same as that of last year. Coach Bill Maybry emphasizes that full participation of non-varsity students in intramural sports is the aim of his department.

Plans for expanding the intramural schedule are very tentative, since the present program provides adequate sports activity throughout the year.

Football will be in Sept. 26. The Intramural Board will announce the teams playing in the first game.

Volleyball and ping-pong tournaments will be completed before Christmas, and basketball also will start before the holidays. A full intramural track meet is planned for next spring.

Field House Painted After Busy Summer

A general face-lifting has been accomplished in Fargason Field House during the summer. Cleaning, painting, and re-arranging have renovated the whole interior.

A new varsity room has been built from the old storage room. The equipment room has been moved into the old basket room. All shower rooms have been cleaned and painted in apple green and tile red. The lines on the basketball floor have also been repainted.

A new water heating plant has already been installed, and is in working condition. For dances, Mr. Rollow, college engineer, has put up a new loud speaker, and promises a new water foundation as soon as it arrives.

The track besides the gym has been scraped and returned to its original width. Grass had crept out into several inches of the cinders.

Coach Bill Maybry is in charge of this improvement and has done much of the work himself. He says that the budget is now arranged so that no sport need lack its necessary financing.

Sufficient equipment is now on hand for all the planned activities, and LeRoy has been appointed equipment manager.

Professors Attend Regional Seminar

Professors David M. Amacker and Thomas M. Lowry of Southwestern's political science department attended a five-day Southern regional seminar at Ashville, N. C. The seminar, held during the week

Glenn A. Johnson will succeed Coach Al Clemens, who left Southwestern last July. The new athletic director comes to us from Bethany College in West Virginia.

Dr. Peyton N. Rhodes and the Faculty Athletic Committee announced the appointment, which became effective July 15.

No football is scheduled for this season; however, it is possible that the sport will be resumed next year.

Southwestern varsity teams will participate in intercollegiate basketball, baseball, and track events. The track activities have special interest for Coach Johnson, since they will stimulate athletic participation among students who normally would not go out for varsity sports. The new coach wants to work on cross-country if there are students interested.

Tennis and golf teams will start organized practice this fall, with possibility of some exhibition matches before winter takes over the sports.

Coach Johnson, who holds his Master of Arts from Columbia University, has had twenty-nine years of experience in coaching every branch of high school and college athletics. He comes to Southwestern with high recommendations. His basketball and baseball teams have been especially successful in the last few years. Coach Clemens is now with Equitable Life Insurance Company.

Music Rehearsals Set For Monday Afternoon

Dr. Burnet C. Tuthill, director of the College of Music, has announced that band, choir, and orchestra rehearsals will begin Monday, Sept. 24. Tryouts for these organizations were held during freshman orientation.

Choir will rehearse at 1:30 and orchestra at 7:30 p.m., both under the direction of Dr. Tuthill. Band rehearsal is at 4:00.

Bob Matthews, a Southwestern graduate of 1951, will conduct the band as an assistant to the music faculty. He will also teach classes in brass instruments. Bob majored in music, with the trombone as his major instrument.

Concert dates have not been set.

of Sept. 7, was to consider "Problems of United States Foreign Policy."

Sponsored by the Brookings Institution of Washington, the seminar discussed the United Nations as an agency of collective security and the United States-European economic relations.

The Brookings Institution is a philanthropic research foundation, whose findings are made available to the government, newspapers, and colleges and universities.

Rush Rules . . .

(Continued from Page 1)

of offending sorority.

5. No invitation of sorority membership shall be indicated or extended in any manner at any time except in formal bidding which will be handled by the preferential system.

Penalty: five girls off quota of offending sorority.

6. Dates are not to be arranged for, or double dates with, new unaffiliated women students. Unintentional double dating must be reported to a member of the Women's Panhellenic Council who will in turn report to the council.

Penalty: three girls off the quota of the offending sorority.

Men's rules are:

1. All rush parties which will be held Sept. 26-Sept. 28 must be

given on the fraternity property. No more than 25c per man, per day will be spent on rushees. This amount to be based on the total number of men at the party. (\$1.00 per rushee for four (4) days.)

2. Only alumni, members, affiliates, and pledges may attend rush parties.

3. There will be no fraternity talk between members and rushees except at rush parties from Monday, Sept. 24-Saturday, Sept. 29.

4. No money will be spent on new men from Sept. 17-Sept. 29 except at rush parties designated in Rule No. 1.

5. Quiet periods will be in effect Monday, Sept. 24-Sept. 28 from 10:00 p.m. to 8:30 a.m.; from 6:00 p.m. to 7:00 p.m. Wednesday, Sept. 26-Sept. 28; from 10:00 p.m. Friday, Sept. 28 until pledging Saturday, Sept. 29.

6. The Dining Hall will be segregated during Quiet Periods.

7. During rush week students must enter and leave fraternity houses only with their rush group. No new men students (those who have not yet completed twelve (12) hours of work at Southwestern) may enter a fraternity houses at

any other time from Set. 17-29 except to attend a social function to which the entire student body is invited.

8. Violations of these regulations must be reported to the president of the Men's Pan-Hellenic Council, who will set a date for a hearing and notify the accused.

9. a. Any fraternity guilty of violating Rules No. 1, No. 2, No. 4, and (or) No. 5 will be fined not less than \$15.00 nor more than \$65.00 and (or) have its house closed for not less than two (2) week nor more than six (6) months.

b. Any fraternity guilty of violating Rule No. 3 will be fined not less than \$25.00 nor more than \$75.00.

c. Penalty for violation of Rule No. 6 will be between \$5.00 and \$15.00.

d. Any new student guilty of violating Rules No. 3, No. 4, No. 6, and (or) No. 7 will be ineligible for pledging for six (6) months.

e. The active collegiate chapter will be held responsible for any violation of the above rules by its alumni and will be penalized in such cases as stated in Rule No. 9, parts a, b, and c.

Danny's Food Store

Silver Saver No. 10

579 No. McLean
Opposite Snowden School

Southwestern Barber and Beauty Salon

649 No. McLean
Phone 36-8025

Southwestern Pharmacy

UNIVERSITY PARK

Cleaners

- LAUNDRY
- STORAGE

613 N. McLean
Phone 7-5851 Phone 7-5852

WHITFIELD KING & CO.

Incorporated

GENERAL INSURANCE

Phone 5-3581

Memphis, Tennessee

81 Monroe Ave.

DELICIOUS FOODS BAKERY

HENRY J. ZDERAD, OWNER

Telephone 7-1757

Established 1931

A Store of Convenience
607-609 N. McLEAN BLVD.
MEMPHIS 7, TENNESSEE

Proud to Print the SOU'WESTER!

Iri-State Press, Inc.

Specialists in Newspapers

277 Jefferson Ave.

Phone 5-6171

The Creator of America's
Most Danceable Music

Griff Williams

and his orchestra featuring:

Sheri Carroll
Bob Kirk
Les Ballard
The Marionette Maestros

Dine and Dance

Hotel Peabody

KLINKE BROS. ICE CREAM

Served at

LYNX LAIR

DeLuxe Shoe Shop

575 No. McLean
By Snowden

Max Stainbrook, Owner

Snowden Barber Shop

Across from Snowden School

"We Rid Dandruff"

575 No. McLean

L. STREET

Watch Repair

615 No. McLean

Watch, Clock, Jewelry
and Crystals

Zinc Etchings
Copper Halftones
Commercial Artists

Mid-South Engraving Co., Inc.
MEMPHIS 7, TENN. • PHONE 38-1447

Dr. R. P. Richardson Is Chosen Head Of Development Office

Dr. Robert Price Richardson joins Southwestern's administrative staff this fall as vice-president in charge of development.

A Southwestern alumnus of the class of 1917, Dr. Richardson recently concluded twenty-eight years of missionary service in China. Following his academic career at Clarksville, Dr. Richardson studied at Union Theological Seminary in Richmond, Va.

On completing his work at Richmond, he was offered the position of assistant pastor of the second Presbyterian Church of Memphis. He declined the assistant pastorate and went instead to China as a missionary for the Second Presbyterian Church.

Dr. Richardson's wife and children were sent out of China in the summer of 1941, but the missionary remained to continue his work. After the United States entered World War II, he was captured and held by the Japanese as a civilian prisoner for six months. He was finally released in the summer of 1942 to sail to the United States aboard the Gripsholm with 1500 other Americans.

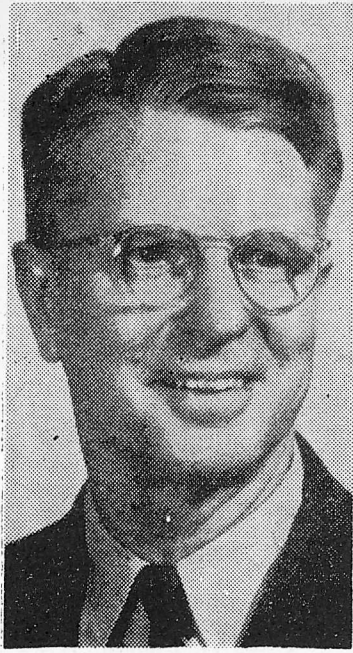
Since 1942, Dr. Richardson has done church extension work for the Committee of Foreign Missions of the Presbyterian Church, U. S., and in 1946 he served as director of relief for UNRRA in China.

Mission work again called Dr.

Richardson to China in 1947, but communist control of his mission field made further work impossible. The Board of World Missions of the Southern Presbyterian Church granted him an indefinite leave of absence, during which he will head Southwestern's office of development.

He will continue the work of Prof. David Sprunt who was assistant to the president and head of the Office of Development during the past school year. Prof. Sprunt, who has been highly commended by President Rhodes for his effective presentation of Southwestern to civic groups, churches, and educational institutions, is now on leave of absence, studying at Union Theological Seminary.

Dr. Richardson's office will



Dr. R. P. Richardson

handle publicity, publications, alumni affairs, and contacts with prospective students.

Professor Julian Nall will be employed in field work for the office of development. He will continue the work of 1951 graduate Toby Bunn in contacting prospective students. Prof. Nall formerly taught mathematics here.

Registration, Orientation Are Now Complete

Registration began at Southwestern on Sept. 18. Freshman orientation started at 8:30 Tuesday morning and lasted until Thursday.

During these three days new students had classification tests, physical examinations, and planning conferences.

Upper classmen registered yesterday.

Registrar Malcolm Evans estimated the total enrollment at 485. About 190 of these are new students, 130 of which are Freshmen. Only 150 upper classmen pre-registered.

Mr. Evans said that the ratio of girls to boys will be around three to two. The registrar's figures are only approximate since many old students have entered the armed forces or transferred to ROTC schools.

Easy-Way Grocery No. 19

605 N. McLean

Used Book Exchange In Sou'wester Office

Southwestern will operate a used book exchange for the first time in several years. This project is sponsored by the Student Council and is located in the Sou'wester office.

Students can bring their old books by the exchange during the afternoons. The cost of the book, after operating expenses are deducted, will be sent to the student when the book is sold.

Used books can be bought at the exchange while it is open, or, in case the office is closed, the prospective seller or buyer can contact the project manager, George Wilson.

DR. NICK SAYS:
Make Yourself at home at the

SOUTHWESTERN GRILL

635 N. McLEAN

CHESTERFIELD - LARGEST SELLING CIGARETTE IN AMERICA'S COLLEGES

AT PRINCETON...

Skirm's Smoke Shop

We certify that Chesterfield is our largest selling cigarette by 3 to 1

SIGNED *J. E. Warrall*

PROPRIETOR



3 to 1 because of MILDNESS
Plus NO UNPLEASANT AFTER-TASTE
...AND ONLY CHESTERFIELD HAS IT!