

The Sou'wester

Southwestern at Memphis



34th Year

Memphis, Tennessee, October 25, 1952

Vol. 34, No. 5

Committee Makes Plans For Gym

GYM IS MEMORIAL TO NEELY MALLORY

Bids will be received on November 13 by Southwestern for the construction costs of the proposed Neely Mallory Memorial Gymnasium. Plans were made available to some ten contracting companies on October 25.

This modern building will be situated north of the present tennis courts, approximately 350 feet off University Street. The structure will be about 230 feet by 140 feet, with its length running from east to west and its entrance on the west.

The ground floor will include a swimming pool, handball courts, class and locker rooms, and a room for the "S" Club. The floor space of the main story will be occupied

by two basketball courts, with folding seats around the sides. The Women's Gym, which will double as a basketball court and stage, will be situated on a four foot level at one end of the main floor. The balcony, which will be constructed around the entire floor space, along with bleachers around the gym, will have a seating capacity of 2400.

The lighting for Neely Mallory Memorial Gymnasium will be designed to give fifty candlepower on the actual playing floor. A complete public address system and electric score boards will add to the modern conveniences that have been proposed for the gym.

Much careful study and time has been put into the designing of this gymnasium for a student body of 650 to 1000 students. The same Gothic motif that has been carried out in all the permanent buildings on the campus will be used, with only such modifications as will be necessary for efficiency. It will be a teaching building—a gymnasium, not a field house.

A building committee of the following men has worked diligently to draw up the plans for this gymnasium: J. Bayard Boyle, Chairman; Edmund Orgill, vice-chairman; J. A. Rollow; P. N. Rhodes; S. Toof Brown; C. L. Springfield; Lucius E. Burch. Mr. S. W. Farnsworth, Chairman of the Southwestern Board of Directors, serves as an ex-officio member of the building committee, and the architect is H. Clinton Parrent, Jr., of Nashville, Tenn.

The brilliant career of Neely Mallory, in whose memory the gym is being constructed, was brought to an untimely end by World War II. A business and civic leader in Memphis, Mr. Mallory was closely identified with Southwestern for a number of years. In 1937 he became a member of the Board of Directors and of the Executive Committee of Southwestern, served as Chairman of the annual support fund campaign in Memphis, and a year later became Treasurer of the College, which office he held at the time of his death. Mr. Mallory was extremely interested in non-subsidized athletics, and at one time he coached Southwestern's football team for a season. It is altogether fitting and proper that Neely Mallory's name should be forever enshrined at Southwestern, the college to which he gave so much of himself. Thus his interested friends established a fund in his memory that has made it possible for Southwestern to at last make definite plans to replace "temporary Fargason" with the most modern of gymnasiums, which it so sorely needs.

The receiving of bids does not mean that construction on the gym will begin immediately, but Dr. Rhodes stated that the contractors

estimates were necessary to determine if sufficient funds are available. Construction will begin, however, as soon as these funds are within reach.

Panhellenic Dance To Be On Nov. 8

The Southwestern Joint-Panhellenic Council held a supper meeting in the Bell Room last Tuesday night to make plans for this fall's Panhellenic Dance.

The group decided that the dance will be held from nine to twelve o'clock on the night of November 8. Colie Stoltz and his orchestra have been secured to provide music for the event, and the subscription will be \$1.25 per couple and \$1.00 stag.

Committees

The following committees were appointed to take charge of the dance plans: Tickets, Kappa Sigma; Refreshments, Pi Kappa Alpha; Publicity, Chi Omega and Alpha Tau Omega; Decoration, Delta Delta Delta, Sigma Alpha Epsilon, and Kappa Alpha; Lead-out, Kappa Delta and Sigma Nu; and Ticket Sales, Alpha Omicron Pi and Zeta Tau Alpha. Pledges of each of the sororities and fraternities will help the committees on decoration and refreshments.

Everyone is urged to place the Pan Dance on his social calendar and plan to attend the event. Tickets will be on sale several days before the dance, and they can be secured through the Panhellenic member of each sorority and fraternity.

Fraternity Pledge Officers Selected

Officers for the new pledge classes were elected this week in five of the fraternities. They are:

Alpha Tau Omega: President, David Rester; Vice-President, John Mays; Secretary-treasurer, David Davis.

Kappa Alpha: President, George Fisher; Vice-President, Loyd Templeton; Secretary-treasurer, Wiley Umphlett.

Kappa Sigma: President, "Jip" Walters; Vice-president, Gerald Smith; Secretary, Mark Waters; Treasurer, Jim Napier.

Pi Kappa Alpha: President, Malcolm Whatley; Vice-president, Bill Godsey; Secretary, Ed Crisler.

Sigma Nu: President, Charles Kennon; Secretary, Bryan Smalley; Treasurer, Dick Flaniken; Commissioner of Athletics, Bob Allison; Scholastic Commissioner, Wayland Carlisle.

The pledge officers for Sigma Alpha Epsilon have not been elected as yet.

Homecoming Plans Made

Homecoming, 1952 style, will get underway tonight with a banquet and dance held by the alumni at the University Club. According to the Alumni Secretary, Goodbar Morgan, a crowd of about 300 is expected to turn out.

At this party Southwestern's 1952 Homecoming Queen and her two maids chosen by the "S" Club and the football team will be presented to the alumni and will reign over the banquet.

Complete plans for the day of homecoming have not been approved by the Student Council, but a pretty definite schedule is known now.

On Friday night before homecoming, Tri-Delt will hold its annual Hallow'en Open House from 6:00-8:00. Tentatively on the social calendar for this night are a pep rally and an informal square dance to which the girls will ask the boys.

No Classes

In celebration of the day of homecoming and to give the students a chance to decorate for the event, the faculty has granted a suspension of classes for Saturday morning. However, the morning will be filled with getting the fraternity and sorority houses ready for the lawn decoration contests and for the all-day open houses and getting the gym decorated for the dance that night.

The kickoff for the big homecoming game between Southwestern and the Sewanee Tigers will be at 2:00, and the Homecoming Queen and her court will rule over the game and be presented in half-time ceremonies.

Formal Dance

The homecoming dance, the first formal of the Southwestern season, will last from 9:00-12:00. Bill Justis and his orchestra have been scheduled to play for the event which will feature the football squads of both schools together with the homecoming royalty.

At the dance trophies will be presented to the fraternity and sorority winning the homecoming lawn decoration contest. These trophies were donated by the alumni association. Also a prize will be awarded to the fraternity selling the most tickets to the dance before 9:00, Saturday night.

Essay Contest Is Announced

The English Department and Stylus are announcing two essay contests in cooperation with the Peter Pauper Press and the Southwestern Library. The Peter Pauper books which have been donated to the library will be on display in the reading room beginning November 1.

Freshman Contest

The first contest will be a required assignment in each Freshman English class and will consist of an informal essay of from 400 to 600 words on one of the following topics:

1) The exhibited books as a whole or any particular books or single book: how the various features (typography, format, illustrations, binding, paper, etc.) contribute to the book's appeal.

(Continued on page 4)

Fall Religious Emphasis Program Commences Tomorrow Afternoon

DR. STOERKER IS GUEST SPEAKER

by Mary Frances Steen

Tomorrow brings to our campus as Religious Emphasis speaker the Reverend C. Frederick Stoerker to discuss with us "A Faith for Today and For 1984." Since 1944, Rev. Stoerker has been the minister at The Chapel, Columbia, Missouri, serving students attending the University of Missouri, Stephens College, and Christian College. From 1948 to 1950 he was a member of the Executive Committee of the United Student Fellowship, the national student organization of the Evangelical and Reformed Church and Congregational Christian Churches in the Netherlands. In 1951, he went to Europe to

participate in a work-study seminar for leaders of youth. In 1952, he returned to Europe to serve as co-leader of a student work camp in Kindberg, Austria. On both of these trips, through extensive personal contacts, he gained a valuable insight into the lives of European students.

He received his A. B. degree from Baker University in Baldwin, Kansas, and his S. T. B. from the Boston University School of Theology. After the war, he served as instructor in philosophy at the University of Missouri for four and one-half years.

The Program

The program is as follows: Sunday, October 25, 5 p.m., Hardie Auditorium—"Looking at Ourselves Through the Eyes of Others"

Monday, October 27, 10:30, Hardie—"What is Your Choice—March or Coasting?"

Tuesday, October 28, 10:30, Hardie—"Avoiding U Turns—at Detour Signs"

Wednesday, October 29, 10:30, Hardie—"Share Your Faith—Don't Hoard It."

Discussions

On Monday and Tuesday there will be a panel discussion after the addresses. These panels will include members of our faculty and ministers and laymen from the city. On Wednesday, the student body will be divided into small discussion groups led by outstanding ministers of the city.

In addition to these addresses he will lead a discussion, "Prisoners Without Their Knowledge" in Robb Hall Social Room, Monday, October 27, 7:30. On Tuesday at 7:30 he will meet with all women students in the Evergreen Hall lounge to discuss "The Future—Is The Present." Also, at 4:00 at the Delta Delta Delta House he will discuss "Planning for 1984" with the entire student body.

Conferences

Rev. Stoerker will welcome requests from students for personal conferences with him. Arrangements for these meetings may be made with him, or through members of the Bible Department of the College. His intimate contacts with European Churches and students on the one hand, and the excellent cross-section of American student life at Columbia's three institutions of higher learning on the other, have afforded him a rich background of experience for understanding student life.

This is your Religious Emphasis Week. Make it real by your efforts.



DR. STOERKER

Players Schedule Two Productions

"Spring Dance," a light play by Philip Barry, scheduled to open October 23, has changed its playing dates to November 6 and 7.

Another major change in the production has occurred. The role originally to be played by Betty Garrett has been turned over to Sophie Woodson. Betty has withdrawn from school in order to be married. Best wishes to both of these girls in their new roles!

The Player's second production, Christopher Fry's "A Phoenix Too Frequent," is scheduled for November 24 and 25. The cast is composed of Joan Stewart, Jennie Lee Davis and Ed Sugg. Everyone is urged to attend both of these plays.

ALUMNI HOLD DINNER-DANCE

A fall dinner-dance will be held by the Southwestern Alumni Association at the University Club tonight. Bill Justic and his orchestra will play at the informal affair from 6:30 p.m. until midnight.

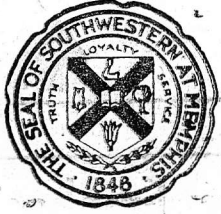
A trophy will be given to the fraternity and sorority having the largest number of its alumni present. SAE and XO were winners of these trophies last year.

Honored guests attending the function will include: Dr. and Mrs. P. N. Rhodes, Dr. and Mrs. Charles E. Diehl, Dr. and Mrs. R. P. Richardson, and Dr. and Mrs. John Q. Wolf.

The Homecoming Queen and her two princesses with their escorts will also be present.

The Sou'wester

MEMPHIS, TENNESSEE
ESTABLISHED 1919



Entered as second-class matter at the post office in Memphis, Tenn., under the act of March 3, 1918.

Memphis, Tenn.

Editor.....	Orley R. Lilly
Managing Editor.....	Emily McKay
Business Manager.....	Bill Hamer
Assistant Editors.....	Mary Rodriguez Robert Pate
Make-up Assistants.....	Elaine Vickrey, Nita Saunders, Joan Womack
Society Editor.....	Esther Jane Swartzfager
Religious Editor.....	Douglas Marsh
Religious Assistants.....	Carole Macklin Margaret Jones, Bill Mitchell
Sports Editor.....	Don Ramier
Sports Assistants.....	Joe Eades, Don Wilkins Anne McGehee
Feature Editor.....	Chandler Warren
Assistant Feature Editor.....	Mary Devlin
Music Editor.....	Andy Orr
News Editor.....	Patricia Riegle
Circulation Manager.....	Jan Hudson
Typists.....	Dot Harris, Beverly Mayhall,
Photographers.....	John McKinney, Al Clemens
Business Assistants.....	Joan Stewart, George Wilson, Anne Talley, Joan Smith, Jean Enochs

Cotton Maid Will Be Best Dressed

The 1953 Maid of Cotton, whoever she is, will be one of America's best dressed women.

In its search for the cotton industry's 15th fashion and goodwill ambassador, the National Cotton Council announces the next Maid of Cotton will wear clothes created by America's most famous designers—all in cotton, of course!

Designers

Impressive labels in the Maid of Cotton wardrobe include the names of Adele Simpson, Claire McCardell, Carolyn Schnurer, Tina Leser, Ceil Chapman and Herbert Sondheim. There will be clothes by Chee Armstrong, Brigrance, Dorothy Cox of McMullen, Emma Domb, Korday, Stephanie Koret and Myna of Bagedonow. Lending their talented hands to the making of this fabulous wardrobe will be Toni Owen, Jerry Parnis, Celia Phillips, Greta Plattry, Pat Premo, Railson, Esther Reifer, Frances Sider, Stanley Wylins and others.

The Wardrobe

The wardrobe will include the most up-to-the minute styles. It will include cottons for all occasions and all seasons. There will be important transitional cottons in menswear suitings and cotton tweeds. Printed and plain corduroys, tweedy denims, velveteens, taffetized cottons, plisses, seersuckers, metallic printed cottons and calicoes are among the fabrics. Styles include bathing suits, suits, coats, evening dresses, handkerchiefs. The Maid's hats, bags, even shoes and luggage are of cotton!

This is the wardrobe the next Maid of Cotton will wear as she tours this nation and foreign countries as King Cotton's ambassador of fashion and goodwill. The wardrobe will be hers to keep after completion of the tour. Everywhere she goes the Maid will be feature model in fashion show, appear on radio and television shows, meet mayors, governors, national and civic officials and cotton industry leaders.

The Big Contest

The Maid will be chosen at Memphis, Tennessee, December 29 and 30, from some 20 finalists selected

McAtee Elected Frosh President

Thomas Is Dorm President

Amid all the confusion of rushing last week, the freshmen found time to meet to hold elections for the freshman class officers. At a meeting in chapel last Thursday Bill McAtee defeated Joe Eades for president of this year's freshman class; George Hearn will serve as vice-president, having defeated Malcolm Whatley for that office; Robin Sprague drew a majority over Marcia Calmer for secretary-treasurer; and Catherine Coleman will represent the freshman class on the Student Council, with her victory over Frances VanCleave.

Evergreen Officers

Sallie Myhr Thomas was elected president of the Evergreen Hall Dormitory Governing Board last week. Mary Harrell will serve as vice-president and Marcia Calmer was elected secretary of the board. Barbara Davis, Annelle Albritton, and Jo Layne Thorwarth were elected to complete the number of members on the board at Evergreen this year.

At an assembly meeting in Hardie last Wednesday, the first ballots were cast for the Homecoming Queen elections. Run-offs for the Queen were held Friday, and the final results appear in today's Commercial Appeal.

from the entries received at contest headquarters.

Any girl between the ages of 19 and 25 years, who was born in a cotton-producing state, has never been married and is at least 5 feet 5 inches tall is eligible to enter the contest.

Entry forms may be secured from the National Cotton Council, P. O. Box 18, Memphis 1, Tennessee. Entries must be postmarked no later than midnight December 1st, to be eligible.

Plans are now underway for a Southwestern Maid of Cotton Contest, the winner of which will represent Southwestern in the national contest.

LETTER TO THE EDITOR—

Ratcliff Touches Athletic Problem

This morning I received the last two issues of "The Sou'wester"—which by the way, were excellent in both form and content—and in reading through it, I was led to reflection on something which I feel has received little public or campus attention, but which is of much more than passing interest to the college. Judging from the articles concerning the football team, there has been a considerable revival of interest and emphasis in that line. But I could not help but wonder about what was not touched on.

P. E. Classes

Within my memory the Phys Ed classes have been at least as bad off as has been the Athletic Department. There has been little or no attempt at organized individual instruction in activities which will develop the "sound body" which holds the "sound mind" Southwestern strives to build. What instruction there was, was in group sports such as basketball and touch football. These will be of little value after you move away from school and the large groups of willing players. Sports of less violent nature and requiring but one or two participants are given little attention. I have always felt that they should be the major concern of the Phys Ed Department.

I do not mean to belittle the efforts of the current staff. They are woefully understaffed and under-equipped for their job. They were hired to run athletics first, though. On this they stand or fall, and for this is provided the major part of their budget. Yet the inter-collegiate teams reach a minority of the students, as well as the very ones who need development of a "sound body" least. Intramurals are considerably nearer what I feel are the main aims of any proper program. Maybry is to be commended on the excellent programs he has built up, considering the little time he is able to devote to it. But even here the emphasis is on those who are able to play, though with a lesser degree of skill, and the emphasis is often on group sports (which are nothing evil in themselves, certainly).

The large area left relatively untouched are those who are not very proficient in the group skills, much less in the individual sports. College is supposed to prepare you for getting the most out of every area of life—for the rest of your life. Even All-Americans don't play football very long after finishing school.

I hope that this rambling message will in part let you know what is on my mind. I didn't sit down with the intention of registering a formal complaint through any "letter to the editor," but I do hope that some little interest in and sane discussion of the problem can be aroused. As an alum, my direct concern is perhaps limited, but I feel that this is a vital part of the long-range program of the College to develop every facet of full Christian life in the students as individuals—something in which I am very interested as a part of the Christian family and the "family of Southwestern."

With best regards,
JIMMIE RATCLIFF

Editor's Note: We believe that Mr. Ratcliff's letter touches a pertinent problem that exists here. It is a subject into which we feel that we should further delve, and we wish to thank Jimmie for his continued concern for the betterment of Southwestern. However, much advancement has been made with the hiring of two new coaches, and things are looking up in the Phys Ed Department.

RELIGIOUS EMPHASIS

Tomorrow morning marks the beginning of the Fall Program of Religious Emphasis on our campus. It couldn't have been scheduled for a more appropriate time, for we have just completed a very strenuous rush week. Every student seems to be holding his eyes open with toothpicks; most of us are behind in our class work; we are cross and upset because we are so extremely tired. Nothing could pull us out of our prevailing mood of weariness into one of peace and contentment better than having an emphasis put on the spiritual realm of our school life.

There is always a peaceful Christian atmosphere on Southwestern's campus, but it is especially prevalent during the programs of religious emphasis. Each fall and spring when the period ends we all say that the success of the present program has surpassed all others. We will doubtless say that again when Dr. Stoerker leaves us Wednesday, for the Religious Emphasis Programs always raise many points of discussion and inspire us to delve deeper into the issues that arise at the convocations and discussions. They make us realize anew that, without a strong Christian faith to guide us in our every act, we can never derive the essential and most important benefits from our experiences. We will all feel that we have become better and bigger persons as a result of our participation in the religious emphasis program.

Take advantage of the opportunities to hear Dr. Stoerker. There is not one of us who could not grow spiritually if we approach this fall period of Religious Emphasis humbly, seeking to gain strength from God to face with a Christian outlook the trying and difficult situations that constantly arise.

We are Christians on a Christian campus; thus, we welcome the opportunity this week to enter into this religious emphasis program with gratefulness to those who make it possible.

CAMPUS CHALLENGES

by Margaret Jones

What is your vocation? When you answer this question do you say, "I don't know," or "Nothing at the present." Do you ever think about what your Christian vocation is while you are in college? Or do you evade the question by saying that your college career is merely an in-between period in which your life has no particular purpose? You are no longer a child and yet you are still waiting to become an adult with responsibilities.

If these are your ideas then you are one of many college students who are shirking their duties as Christians. As a student, and especially as a student in a Christian college, you have a very demanding vocation. That vocation is your Christian duty to apply yourself wholeheartedly to your courses in order to obtain the greatest benefits. You can sit in classes, pass the tests and still receive nothing from the course. Here you are turning your back on your duty.

And don't make the mistake of thinking that grades are of prime importance in a course. Certainly they are important but this should not be your only incentive to study.

It is your duty as a Christian to study in order to grow mentally as well as spiritually.

Don't let your college career be four years on which you look back and find nothing. Let it be the beginning of your broader education. Learning is a continuous process which lasts your whole life, but the first step can be in college where you have the most opportunities. Realize your many opportunities as a student in a Christian college and use them. "Thou shalt love the Lord thy God . . . with all thy mind."—Matthew 22:37.

Seniors Should Apply Now For Fullbright Scholarships

Attention all seniors! October 30 is the last date that you can apply for a Fullbright Scholarship.

The awards under the Fullbright Act are part of the program sponsored by the State Department to promote better understanding between the people of the United States and other countries.

The students winning these awards go to Australia, Austria, Belgium and Luxembourg, Burma, Denmark, Egypt, France, Greece, India, Iran, Italy, Japan, Netherlands, New Zealand, Norway, Pakistan, Philippines, Thailand, Turkey, Union of South Africa, and the United Kingdom. Last year Wayne Todd won a scholarship to Austria and Fritz Freeman, to Australia.

The eligibility requirements are:

1. United States Citizenship.
2. A college degree or its equivalent.
3. Knowledge of the language of the country sufficient to carry on the proposed study.
4. Good health.

The selection is made on the basis of the applicant's personal qualifications, academic record, value of the proposed study or research, and suitability for placement in an institution of higher learning abroad.

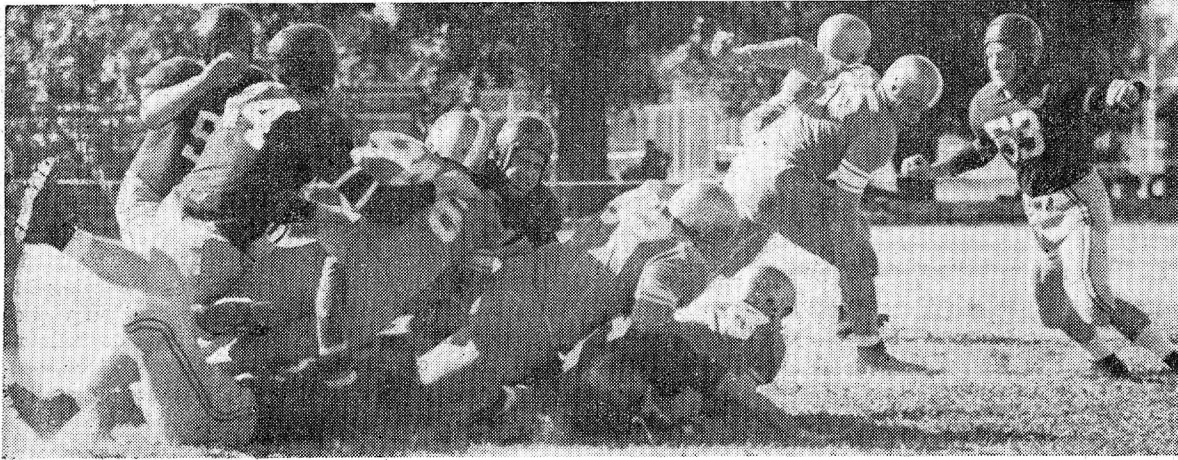
The awards are made entirely in the currencies of the foreign countries. They cover transportation, expenses of a language refresher or orientation course abroad, tuition, books, and maintenance for one academic year. No limitations are

placed on the applicants choice of project or field of study.

For more information about applying for a Fullbright Scholarship, see Professor Embry. This is a wonderful chance for anyone who is interested.

Business Office Notice

The Business Office has been and will continue to be closed each morning around nine-thirty, so that Miss Martin will have time to sort the mail. Those persons who have been coming in at this time to get their mail are asked to wait until all the mail has been sorted and sent to the dormitories for distribution. If we cooperate with Miss Martin in this matter, everyone will get his mail sooner, and less of her time will be taken in sorting it.



There's a pile-up on the play, as the Southwestern Lynx and Centre Colonels try to cover the ball. This exciting play took place during last week's match between the two teams. How many players can you recognize?
—Photo by Clemens and Freund

SPORTLITE—

Southwestern's Lynx Lose To Centre, 26-6

LYNX VIE WITH HENDRIX TODAY

by Don Ramier

The luckless Lynx dropped their third straight football game of the season last Saturday, bowing 26-6 to the Centre College Colonels.

It was the same story over again. Southwestern played on even terms the first half, but was overpowered by sheer weight of numbers toward the last of the game.

Two punts in the first quarter, off the toes of Frank Simonton and Pete Street, equalized the game and kept the Danville, Kentucky, boys from scoring, but the Lynx offense could not move.

Lynx Kick Off

Southwestern kicked off and the Colonels immediately began to move, driving to the Lynx two yard

line. There a fumble by Centre's "Tip" Evans was covered by Bob Crumby, and the Colonels' first drive was stopped. Simonton then lifted a long punt that netted 65 yards, being downed on the Centre 33 yard line. This put the opposition back in their own territory, but not for long.

Centre began to roll again, and eight plays later the ball was resting on the Lynx 31 yard line. Southwestern's line held for the first time, and the Lynx took over on downs.

Our Ball

Street took the ball on Southwestern's first offensive play of the game, skirted his right end, but was stopped before he could gain more than a yard. Crumby, running from fullback, found Centre's forward wall equally impenetrable, on the next play. Then on the third down with the ball resting on their own 32 yard line, Southwestern lined up in their regular single wing formation, and the ball was snapped to Street. Instead of running, Street booted a quick kick that soared far over the heads of the Colonels' secondary defense, and came to rest on the Centre 9 yard line—a 59 yard quick-kick. Thus the Colonels were set back again by the punting of the Lynx.

The first period ended before either team had a chance to reach pay dirt. Southwestern had recovered a fumble, stopped Centre's offense once and taken over the ball on downs, kicked two score-saving punts, and carried the ball twice for a gain of one yard. Centre did the rest, but was not able to score.

Second Period

The Colonels began to roll in the second period and scored twice—using a variation of the old statue of liberty play to set the stage for the TD's.

Evans, with the ball resting on the Southwestern 27, faked a pass and handed the ball off to Dick Holmes who skirted around left end and went to the Lynx six before being stopped. On the next play Evans scored. The attempt at the extra point was blocked by Charles McAllister, and the Colonels led 6-0 midway in the second period.

Centre maintained offensive and scored their second tally much in

the same manner as the first. This time Evans faked a handoff to Holmes on the same play that baffled the Lynx defenses previously, and tossed a 15 yard pass to Jimmy Lee who was waiting in the end zone.

With the score standing 12-0, the halftime whistle sounded, and the teams abandoned the field. Whitehaven High School's band entertained the crowd, forming an "S" and playing Southwestern's Alma Mater.

Lynx Score

The Lynx opened the second half strong, and drove to their only score mainly on the running of McAllister. On the second play of the last half, McAllister took the ball on the Lynx 26, and blasted his way through Centre's defenses and drove to their 16, to net 50 yards on the run. Three plays later, the big fullback bulled his way over to rack up six points. Crumby's attempted conversion with Frank Horton holding was blocked.

That was all the scoring for the Lynx, but not for Centre. The Colonels scored two more markers, both on short line plunges. Evans tallied his second TD from the five yard line, and midway in the last quarter, Bob Fowler went over from the four.

The Lynx scored only once in this game, and have averaged but six points per game thus far in the season. But they will attempt to change the situation today when they meet Hendrix College in Conway, Arkansas. The team left yesterday in order to arrive early enough to get plenty of rest before the game this afternoon. They will return sometime tonight. Good luck, Lynx! We're pulling for you.

Score by periods:

Southwestern	0	0	6	0
Centre	0	12	7	7

Scoring touchdowns:
Southwestern—McAllister.
Centre—Evans 2, Lee, Fowler.
Centre Conversion—Fowler 2.

LOST AND FOUND

For the information of new students, and to remind old students, the Lost and Found Department is located in the cashier's Office. Any student who has lost or found anything should contact Miss Ireys Martin. Ask her about lost pens and pencils, books, etc.

New Directors Are Added To Board

Two new members, James A. Minter, Jr., of Tyler, Alabama, and Robert C. Gillespie, of Meridian, Mississippi, have been added to Southwestern's Board of Directors. Dr. John S. Land, of New Orleans, has been reappointed to the board, bringing it to full membership.

Mr. Minter attended Davidson College for two years and graduated from the University of Alabama in 1926. Since that time he has been a planter in Tyler, and since 1941, he has been the ruling elder of the First Presbyterian Church, of Selma, Alabama. He replaces Dr. George Lang, of Tuscaloosa, a Southwestern alumnus and head of the department of philosophy at the University of Alabama, until his retirement.

Mr. Gillespie, a prominent Meridian attorney, replaces W. Stennis Johnson of McComb. A native of Alabama, Mr. Gillespie studied law at the University and was later a law partner of the late Governor Thomas L. Bailey, of Mississippi. His son, Bob, Jr., is a well-known figure on Southwestern's campus.

Dr. Land, who has been a member of the board for the past twelve years, has been named to another six year term. He is the pastor of the St. Charles Avenue Presbyterian Church, of New Orleans.

Southwestern Barber and Beauty Salon

649 NO. McLEAN
Phone 36-8025

POOCHIE'S PATTERN— Rush Is All Over— Pledges Entertained

Rush is over! All is near normal again, and the social whirl is turning at an average speed with fraternity and sorority parties, honoring new pledges.

All the sororities held open houses after formal pledging Saturday night from 9:00-11:00. These open houses were for the entire student body in honor of their new pledges. Each sorority took advantage of this opportunity to acquaint guests with their pledges. A spirit of relief and a promise of happiness mixed with laughter and joy at each house.

The AOPi's held a slumber party at their lodge after the open house. Everything from singing and bridge, to dancing and leap-frog was enjoyed by the "cutie-pies" and pledges.

The Zeta's and the Tri-Delta's had overnight parties in Voorhies after formal pledging. The Zeta's made use of Voorhies basement, while the Tri-Delta's took over third floor. Sorority singing and good old conversation added to the happiness of these groups.

Tri-Delta's, Chi-O's, KD's, and AOPi's ate supper in their lodges Monday night after their sorority meetings. This fellowship was enjoyed by pledges and members.

Founder's Day of Zeta Tau Alpha was celebrated by Beta Sigma chapter with a banquet Monday night at 6:30 at the Parkview Hotel. The banquet was attended by alumnae, members, new initiates and new pledges. Entertainment in the form of a skit and group games was presented by the new initiates.

Pappie's and Jimmie's Lobster Shack was the site of a banquet Monday night at 6:45 given by the KS brothers honoring their little brothers.

KA Officers

Kappa Alpha elected officers Monday night to replace those who held offices but did not return to school this semester. "Buck" Looney replaces Billy Howard as Vice-President, and Chandler Warren is the new secretary, replacing Roxie Lee.

Kappa Delta sorority held its annual Founder's Day Banquet last Thursday, October 23, at the Peabody Hotel. Members and pledges attended the banquet. This party commemorated the founding of Kappa Delta at Farmville, Virginia on October 23, 1897.

Friday afternoon the Tri-Delta pledges were honored by the members with a coke party. The chief entertainment was in the form of sorority singing.

INTRAMURALS—

Horseshoes Over; Football Starts

Men's Intermurals have got off to a good start this year. With the horseshoe matches now over, the fraternities are starting their touch football games.

In the horseshoe contests there were some very close matches. The Independent team which came out on top was composed of Bill Harvey, Willie Bow, Gordon Smith, and Bob Stewart. About forty men in all participated in the tournament.

	Won	Lost
Ind.	6	0
ATO	5	1
KA	4	2
SN	3	3
SAE	1	5
PIKA	1	5
KS	1	5

Monday, October 20, fraternity touch football started with two games. They were both heated games with good hard play. The KS team downed the PIKA's 32-6. "Jip" Walters and Bob Jackson were the offensive stars for the winning team, and John Butterworth was the defensive star. Henry Freund scored the points for the PIKA's.

The SAE's were defeated by the SN's, 12-0. Tommy Crais and Bob Allison were the stars on the SN team and Bob Dupree was one of the strong defensive men for SAE.

Next week's schedule for touch football is as follows:

- Monday, October 27
KA vs SN
Ind. vs ATO
- Tuesday, October 28
PiKA vs SAE
- Wednesday, October 29
Ind. vs KS
- Thursday, October 30
PiKA vs SN
- Friday, October 31
SAE vs ATO

Acknowledgement

Last week Esther Jane Swartzfager failed to receive a by-line for the article she wrote on the sorority rush parties. This was a very long article and involved a lot of time and effort on Poochie's part, so the editors would like to acknowledge and apologize for this mistake. Thanks, Poochie, for a wonderful job!

Easy-Way Grocery No. 19

605 No. McLean

There's lots of excitement around the dance floor—greeting old friends, making new ones. Part of the fun of campus parties is the pause to enjoy a Coke. It's delicious... refreshing, too.

Campus capers call for Coke

BOTTLED UNDER AUTHORITY OF THE COCA-COLA COMPANY BY
THE COCA-COLA BOTTLING COMPANY OF MEMPHIS

"Coke" is a registered trademark

© 1952, THE COCA-COLA COMPANY

YWCA Discusses Campus Sororities

Tuesday afternoon, October 22, the Southwestern Y.W.C.A. met in Voorhies basement for their regular monthly meeting. The first part of the meeting was devoted to a social hour, with refreshments provided.

After the devotional, led by Anne Hebert, Mary Frances Steen, president, introduced to the new members the Y.W.C.A. cabinet: Vice-president, Ann Taylor Walker; Treasurer, Katherine Hinds; Membership, Jean Enochs; Social Service, Peggy Fitch; Publicity, Mary Helen McLeod; Music, Carole Macklin; Devotional, Anne Hebert; and Social, Betty Wade and Betty Worthington.

Ann Taylor Walker introduced Miss Eleanor Bosworth, Dean of Women; Miss Erlene Downs, Assistant to the Dean of Women; and Professor Taylor Reveley, College Chaplain, who led a panel discussion on "The Christian in the Sorority." Each of the members of the panel gave a short talk, after which questions were asked and comments made by those attending. This discussion proved very helpful to all those in attendance.

WESLEY GROUP IS ORGANIZED

Wednesday night, October 23, the Methodist students on campus met at the Kappa Alpha house to organize the Methodist Student Movement at Southwestern.

Albert Evans, who presided over the meeting, introduced Miss Joan Smith, director of religious education at St. Luke's Methodist Church and part-time director of the Wesley Foundation at Memphis State, who discussed the three types of Methodist Organizations on college campuses and gave the group some pointers on setting up the organization at Southwestern. A question-answer period followed, at which time projects for the year were discussed.

Temporary officers were elected as follows: Roy Coats, chairman; Bettye Fisher, secretary-treasurer; Albert Evans, recreational chairman; George Wilson, membership and publicity chairman; Carolyn Milton and Mary Williams, co-chairmen of programs and worship.

The group decided to meet every other Wednesday night. All Methodist students and others interested in this movement are invited to attend.

LYNX PICTURES TO BE TAKEN

Pictures for the 1953 Lynx will be taken next week, Monday through Friday, in Mr. Pack's office at the back of the Lynx Lair. Mr. Miller, of Pruette-Miller Studios, will be here each day from 9:00 a.m. to 3:00 p.m.

Boys are asked to wear light coats and dark solid ties. If you do not have a solid tie, one will be provided for you. Girls will be provided with identical white blouses, so that the pictures will be more uniform this year.

Last year about fifty students reported the first two days for pictures and about three hundred came the last two days. This puts an inconvenience upon Mr. Miller, so the editors of the annual ask that this year as many as possible go down Monday or Tuesday, to avoid rush and confusion during the latter part of the week.

Retakes will be taken on Monday and Tuesday of the following week. The editors would like to emphasize that only retakes will be made at that time, so if you do not have your picture taken next week, it will not appear with your class in the annual.

NOVEL NOTES— Read "God's Men"

GOD'S MEN. By Pearl Buck
This is the inspiring and discouraging story of two men's search for happiness and success—a completely different thing for each one. The story starts in China during the Boxer rebellion. One of the characters is the confused son of a poor Faith missionary; the other is the rebellious son of a more well-to-do Episcopalian missionary.

One rises to the top of the financial and social world—proud, self-contained, and rich, but strangely dissatisfied and unhappy. The other strives to better the world by helping the poor, overcoming the tremendous odds against him, also becoming rich, but happy, too.

God's Men is thrilling from the first to the last and reveals strange tensions and loves. What is the strange pull and pressure which the mystic East exerts on these two men all of their lives? Why are these two, so close to each other, always in conflict? Any reader will enjoy this great piece of literature, as a tale, tense and exciting, unrolls itself. I found Pearl Buck's story one of the most intriguing that I have read in a long time.

Mary Rodriguez

Sororities Pledge Eighty-one Girls

Saturday night, October 19, the five sororities on campus held pledging ceremonies for eighty-one women students. The following girls were pledged to the various sororities:

Alpha Omicron Pi: Mary George Beggs, Ann Threlkeld, Anne Sterry, Rhoda White, Marymax Williamson, Shirley Paxton, Maida Moore, Louise Campbell, Catherine Cheatham, Mary Devlin, Geradine Dozier, Beth Holden, Jenny Hurst, Erin Moody, Marilyn Mosby, Jane Pyron, Carole Thompson, and Jo Ann Pomeroy.

Chi Omega: Elaine Dies, Ruth Beasley, Virginia Lee Anthony, Paula Smith, Margaret Hagood, Catherine Blaize, Jo Layne Thorwarth, Jean Johnson, Barbara Lovett, Gretchen Lovett, Joanne Heyer, Elizabeth Walker, Janet Green, Billie Shackelford, Vernon Ware, Nickey Lawton, Nancy Deupree, Marcia Calmer, Virginia Walton, Virginia Bramlett, and Marian Cobb.

Delta Delta Delta: Ann Barr, Linda Becker, Sara Jane Clark, Catherine Coleman, Fairley Cunningham, Barbara Davis, Marilyn Drash, Carolyn Milton, Jackie MacMaster, Sara Jane Seissinger, Suzanne Snyder, Laurel Speir, Robin Sprague, Ann Ryan Thomas, Sallie Myhr Thomas, Frances VanCleave, Elaine Vickrey, Mary Ann Wachal, Corrine Waite, and Matilda Walker.

Kappa Delta: Virginia Malone, Nita Saunders, Annelie Albritton, Sara Butterworth, Nancy Germany, Diana Cade, Jo Ann Iverson, Barbara Howell, Mary Harrell, Dorothy Henning, Laurita Cox, Suzanne Carter, Mary Jane Wood, and Jo Taylor.

Zeta Tau Alpha: Nola Nurnberger, Sara Jane Brockman, Joan Womack, Donna Jean Anderson, Julia Ann Morrow, Delores Mae Wright, Johnnie Sudduth, and Ada Jane Walters.

All of the sororities held open houses from 9-11 p.m. in honor of their new pledges. The entire student body was invited to the events.

"The Sou'wester" wishes to offer its congratulations to the new pledges and it hopes that their new association will be a happy and enjoyable one.

Zinc Etchings
Copper Halftones
Commercial Artists

Mid-South Engraving Co., Inc.
60 S. THIRD ST. • MEMPHIS 3, TENN. • PHONE 38-1447

Cash Awards Given In Uhlmann Contest

Formal announcement of the details for the Uhlmann Awards Student Contest for 1953, an annual affair now in its fourth year, has just been made. This contest is sponsored by Richard F. Uhlmann, President of the Uhlmann Grain Co. and a former President of the Chicago Board of Trade, to stimulate an increasingly broader interest in the marketing of grain on the part of college students as well as by lecturers and instructors working for advanced degrees throughout the United States and Canada.

Through it, Mr. Uhlmann, in inaugurating the Contest in 1949 as a memorial to his late father, hoped to develop a still better insight into and a broader understanding of the fundamentals and functions of, and the economic necessity for, the existence of commodity exchanges such as the Chicago Board of Trade. The continuation of the contest is indication of continued realization of his objectives.

\$1,250 In Prizes

Mr. Uhlmann has again made available the sum of \$1,250.00 for distribution to writers of the prize-winning theses for the 1953 Contest. It is to be equally divided between the two classes of participants; these two being known as Group "A," consisting of Undergraduate Students and Group "B," composed of Graduate Students.

Subject Matter

Papers submitted must treat of some aspect or aspects of grain marketing activity, but otherwise there are no restrictions as to the scope of their subject matter. As to the text material itself, while naturally the matters of organization, presentation, English and composition will necessarily carry weight in assessing the value of the manuscript, in the final analysis, it will be the presence of originality of thought coupled with the evidence of independent research and study, that will outweigh other considerations.

Full details governing the Student Awards Contest may be secured by writing direct to the Chicago Board of Trade, 141 West Jackson Boulevard, Chicago (4), Illinois.

KLINKE BROS.
ICE CREAM
Served at
Lynx Lair

UNIVERSITY PARK
613 No. McLean
"Glad to Serve You"
C. H. (Smiley) MOORE, Mgr.
Phone 7-5851

WHITFIELD KING & CO.

Incorporated
GENERAL INSURANCE
Phone 5-3581 Memphis, Tennessee 81 Monroe Ave.

LOEW'S STATE THEATER

presents
"Horizons West"

Starring
ROBERT RYAN
JULIA ADAMS
ROCK HUDSON

Color by Technicolor

Record Library Needs Listeners

The record library has been playing to empty seats for two weeks now. Although the library's facilities were designed to benefit the entire school, so far the only person benefited has been the librarian. In order that he might at least appear to be earning his salary, the record librarian wishes to join with the music department in inviting all Southwestern students to make full use of all the record library has to offer.

The music to be found on record in the library ranges from Hebrew chants that date back to Old Testament time to Porgy and Bess and A Symposium of Swing. There are two long-playing machines, one "45," and three standard sets, plus more than a thousand albums and even more individual recordings, with scores for the most of the "long-hair" works—all at the disposal of the students and faculty of Southwestern.

If you are interested, the record library is in the far corner of the practice and/or psychology building. There is even a boardwalk to enable freshmen to get there without damaging the grass. The hours are as follows:

Tuesday, 6:00-8:00 p.m.
Wednesday, 1:00-3:00 p.m.
Thursday, 3:00-5:00 p.m.
Friday, 6:00-8:00 p.m.

Other hours can be arranged upon request. Chester Anderson is in charge of the library.

Contest . . .

(Continued from page 1)

bute to the total effect of the books.

2) A literary appreciation of one particular book on display or listed in the catalog of the Peter Pauper Press.

3) Building a personal library: the advantages of having a personal library and the ways of building one.

Prizes will be awarded by the Peter Pauper Press, with the winners selecting the books they wish from the list of "Collector's Edition." First prize for the freshmen will be four books; second, three books; third, one book. Deadline for freshmen will be November 15.

Upperclass Contest

The other contest will be open to all sophomores, juniors, and seniors, except members of Stylus. Rules are the same as for the freshmen, but an additional topic will be allowed: What makes a book live. Deadline for upperclassmen will be November 22, and only two prizes will be given, four books for first place and three for second.

Each professor will select the best essays in his classes and Stylus will act as final judge.

Patronize your LYNX LAIR

Serving . .
Sandwiches
Soups
Fountain drinks
And many other things for lunch or just for a snack.
Cigarettes
Toiletries
and other things you may need.
Or, if you don't need anything, just come in for a game of cards.
Open daily, except Sunday
8:00 a.m. to 2:30 p.m.
6:00 p.m. to 10:00 p.m.

Johnny Long and the Band of the Southland

Special price for all sorority, fraternity, and school functions.

Why pay more when you can get the best for less.

Phone 36-2833
1171 KYLE ST.

DR. NICK SAYS:

Make Yourself at Home

at the

Southwestern Grill

635 No. McLean

Presenting . . .

The Romantic Style
of

RUSS CARLYLE And His Orchestra

Mike Caranda
Pianist

Dine and Dance

HOTEL PEABODY