

# The Sou'wester

Southwestern at Memphis



33

33rd Year

MEMPHIS, TENNESSEE, MARCH 28, 1952

Vol. 34, No. 22

## Southern Literary Convention Will Have Writing Sessions

By Paul Flowers

A series of clinics on poetry, short story and drama writing will dominate the program at the Southern Literary Festival, which comes on April 18 this year at Mississippi State College for Women, Columbus, Miss.

As usual, a galaxy of writing people will be on hand to make speeches; but in small, specialized sessions, aspiring writers of the South will have an opportunity to rub elbows with the producers in an informal way, will be encouraged to ask questions.

In all truth, this ought to be the very keystone of an event such as the Southern Literary Festival.

### Fifteen Schools

Once again young men and women from fifteen or more colleges and universities of the South will gather to exhibit some of their work, to compete for prizes topped by a sweepstakes award of a \$100 Government bond given by the *Commercial Appeal*.

The welcome will be voiced by Dr. B. L. Parkinson, president of Mississippi State College For Women. Dr. Lawrence T. Lowrey, president of Blue Mountain College, will respond. Katherine Anne Porter, author, and Randall Jarrell, poet, will speak at the morning session. Mrs. Dera D. Parkinson will speak at the luncheon.

### In The Afternoon

Clinics follow in the early afternoon; poetry, conducted by Mr. Jarrell, short story, by Miss Porter, and drama, by Samuel Selden. Dudley R. Hutcherson, dean of the Graduate School, University of Mississippi, will be speaker at the dinner meeting, and Mr. Selden will give the address at the evening session, when winners and awards will be announced.

## Prominent Men Will Lead Symposium 8

The eighth symposium of the series, *Design for a City*, will be presented Tuesday, April 1, in Hardie Auditorium.

Four talks will be given at this symposium on the general topic of city problems and possible solutions for them. The first, on "Metropolitan Planning," will be given by Mr. Alfred L. Aydelott, a Memphis architect.

Mr. Joseph A. Fowler, Director of the Memphis Housing Authority, will discuss "The Garden City," and Mr. Everett R. Cook will speak about the "Economic Resources of the Modern City." "Planning Community Utilities" is the fourth topic, to be led by Mr. Thomas R. Allen.

## DDD And SAE Place As Stunt Night Firsts

The winners of the Alpha Omicron Pi Stunt Night were the Tri Delta sorority and the Sigma Alpha Epsilon fraternity. The Chi Omegas and the Alpha Tau Omegas won second place in their respective groups.

At the conclusion of the evening the new officers of Alpha Omicron Pi were announced for the 1952-53 year. Helen Swortfager will be their new president, Nancy Carrell, vice-president, and Ann Riley, recording secretary.

## Pre-pastors To Have Meeting

The Ministerial Club will hold its March meeting jointly with a rally of the Men of Memphis Presbytery on March 28. Supper will be served to members attending this meeting at 7:00 p.m. in Evergreen Presbyterian Church.

Dr. Edward D. Grant will be the principal speaker of the evening. Dr. Grant is now the executive secretary of the Board of Christian Education. The musical part of the program will be presented by the Gordon Sisters, a quartette, and a stringed trio.

The regular March meeting of the Ministerial Club, which had been scheduled for tonight, will be replaced by this meeting with the Men of Memphis Presbytery. There will be no charge for the dinner to members of the Ministerial Club.

## China Debated In Discussion

An informal debate on "Nationalist China: Bulwark or Parasite?" to be led by Eleanor Brown, Roscoe Field, and Jack Blake will constitute the International Relations Club program on April 2. The discussion will be held in 100 Palmer Hall at 7:00 p.m.

All three debate leaders are members of Professor Lowry's international relations class. This will be the third of the IRC's programs on the Far East.

In assembly, April 4, John Berry, Korean veteran, will present "A First-Hand Account of the Police Action in Korea."

Any students interested in travelling abroad during the summer months are reminded to contact Mary Frances Steen about the various opportunities now offered for student tours.

## High School Joint Pan Brings Dance

The Memphis High School Joint Pan-Hellenic Council will hold its annual dance in Southwestern's Fargason Field House on Thursday, April 10. The dance is for all the students of the sponsoring high schools: Central, East, Lausanne, CBC, Miss Hutchinson's, and St. Agnes.

Music by Memphis dance bands will be provided for the dance free of charge. Bill Justice will arrange bands for the entire evening. The dance, an annual affair, is usually held at the Memphis Jewish Center.

# April Fool Play Has Three Vs. One Plot

## "Man And Supermouse" Title Farce By Starr

Three brawny football players out to get a dried up runt who is stronger than he looks—that's the story of the 1952 April Fool play which will be presented April 4 in Hardie as the opening of festivities in the April Fool Carnival.

Titled "Man and Supermouse," the play concerns the vengeance-bent manipulations of Charles McAlister, Buddy Allison, and Wheatley Beard, who are the men concerned, against supermouse Douglas Marsh.

Doug, in the role of Percy Whistlethwaite, gets off on the wrong foot with the big three in the first scene by beating up McAlister, who plays the part of William Burnett. The remaining ten scenes are devoted to various attempts by the "BMOC's" to put this freshman in his place.

### Percy's Girl Friend

Ann Hebert will play Percy's girl friend Sally Wade, Peggy Pence will appear as Mitzi, and Jimmy Crow is Walter Edwards. Several smaller roles have not yet been cast although the play went into rehearsal Tuesday.

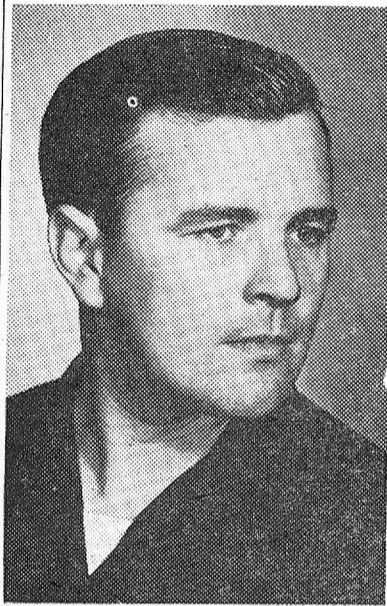
"But this play is different from last year's," Starr hastened to say. "Last year I tried to make the comedy the basis for a moral story. Most everybody saw the comedy, but to date, only three have remarked the moral. This year's play is pure farce. Maybe they'll see a moral when there's none there."

### The Sou'wester

Starr is a senior and a French major. For a year and a half he edited the *Sou'wester*, and he has written the April Fool play for two years in succession.

This will be the first April Fool play in a number of years that has not included supernatural beings or a scene laid in Hell.

Pat Riegle will direct assisted by the author. Betty Berk Rucker is in charge of props.



Bob Starr

## Officers Visit For NavCads

Two representatives of the Millington Naval Air Station will be on the campus Friday to discuss the Navy's Aviation Cadet Program with interested and qualified Southwestern students. The two officers, Lt. Commander E. G. Colgan and Lt. Denis Earles, will arrive Friday morning and remain through the morning and early afternoon.

### Cadets Who Qualify

Candidates to qualify for the eighteen months specialized aviation training course must have two years of college, pass the Navy's aptitude and physical tests, be unmarried and must not have received orders to report for Selective Service Induction.

### The Flight Training

The year and a half flight training program, at the Navy's "Annapolis of the Air"—Pensacola, Fla., is divided into three phases—pre-flight school, basic flight and advanced flight training.

After basic training, the cadet is sent to the huge Naval Air Station at Corpus Christi, Texas, where he is given advanced training in service type aircraft, either single or multi-engined.

## KD Plans Formal Dance With White Rose Motif

Kappa Delta has made big plans for their traditional White Rose Ball which will be held tomorrow night in the Panorama Room of the King Cotton Hotel from 8:30 until 12:00 p.m. Johnny Long's orchestra will play.

Following the simple motif of the White Rose, the decorations will consist of white roses, which will be wound around a rose arbor.

The members, pledges and their escorts will lead-out through giant glittered KD letters and through the arbor where they will be presented to the guests.

As a special feature Miss Gloria Brown will sing "There Is No Girl Like A KD Girl." As is traditional, the outgoing president, Mary Woods, will present the new president, Sue Pingree, with a bouquet of roses.

Betty Lou Collins is general chairman of the dance and her committee chairman are Viola

Deavors, lead-out and decorations, Betty Sue Wilcox, breakfast, Julia Skinner, flowers, and Patricia Riegle, orchestra.

## Queener Speaks For Servicemen At USO

Dr. E. L. Queener spoke on "Marriage and the Military Service" at the USO and YWCA building, 200 Monroe, last Wednesday night, March 26.

This topic was the final one in a series of forums on "Courtship and Marriage" held at the USO.

## Stylus Will Out Says President

Dear Editor:

Your last week's editorial about Stylus, contained good intention but for the most part a lack of information. Of course, I realize that information is not the chief quality required for an editorial.

The main reason for one issue of Stylus this year is a financial one.

We are allowed \$.50 per student as you mentioned, and to realize additional money by advertising makes a cheap looking literary magazine. Therefore, our funds are inadequate for more than one large issue. As long as Southwestern remains at its present enrollment, we probably can't have but one issue each year, however this one issue can include most of the good writing done by our students.

This issue should be off the press about the end of April, and will be larger than past issues which you remember.

Contrary to your rash statements, interest in the literary magazine has been exceptionally high. (Continued on Page 2)

## Women Meet With Board Of Directors

The Board of Directors of Southwestern met here last Tuesday, March 25. This was the first meeting which Southwestern's new women directors participated.

The meeting, which started early Tuesday morning, ended at 3:00 p.m. Tuesday afternoon, when a tea was given by the Southwestern Faculty Wives Club. The tea honored the six recently-chosen members of the Board of Directors and gave them a chance to meet the members of the faculty and staff of Southwestern.

Mrs. P. N. Rhodes and Mrs. C. E. Diehl acted as joint hostesses, and Mrs. A. T. Johnson was in charge of decorations.



Crescendo—

# Boys' Choir To Sing Outstanding Program

## Norwegian Treat Is Eight-Part Harmony

By Vera Burns

The Norwegian Boys' Choir will close the current Beethoven Club concert series on Sunday, March 24, in the South Hall of Ellis Auditorium at 3:00 p.m.

Ragnwald Bjarne is conductor and founder of the group, which is composed of forty-eight boys ranging in age from 11 to 20 years. Use of the older boys with their matured voices permits the unusual treatment of melodies in eight-part harmony, ranging from the deep bass of the young men to the coloraturas of the boy sopranos. One boy is said to soar into a C above high C.

On this first tour of the United States, the choir will appear in eighty cities and towns during their three and a half month trip. Their programs are sung in seven languages and include Bach and Palestrina classics, the romantic composers, and Grieg, contemporary Norwegian songs, English songs, and Negro spirituals.

Irene Jordan

Irene Jordan, soprano formerly with the Metropolitan Opera Association, will be guest artist for the second concert of the Memphis Youth Symphony. Dr. Henri Minski will conduct the young student instrumentalists in recital at 8:15 p.m., April 8, Ellis Auditorium.

Carol Brice, noted Negro contralto, will sing at the Metropolitan Baptist Church on April 15.

The Southwestern Singers, under the direction of Dr. Burnett C. Tuthill, have scheduled four more concerts of sacred music drawn from their 1952 tour program. Climax of the year will be Handel's "Creation" at 8:15 p.m., April 29, Evergreen Presbyterian Church. The Singers will appear today at Whitehaven School at 12:30 p.m. on April 2 at Central High at 10:30 a.m., on April 3 at Evergreen Presbyterian church at 7:45 p.m., and on April 15 at the Civitan Club at 12:45 p.m.

**UNIVERSITY PARK**  
Cleaners  
• LAUNDRY  
• STORAGE  
613 N. McLean  
Phone 7-5851 Phone 7-5852



Ah! Spring!  
—no better time to save a buck

**by GREYHOUND**

	One Way	Round Trip
ST. LOUIS, MO.	\$6.05	\$10.90
EVANSVILLE, IND.	5.45	9.85
NASHVILLE, TENN.	4.35	7.85
CHATTANOOGA, TENN.	6.00	10.80
BIRMINGHAM, ALA.	5.10	9.20
ATLANTA, GA.	7.95	14.35
NEW ORLEANS, LA.	7.90	14.25
LITTLE ROCK, ARK.	3.40	6.15
DALLAS, TEX.	9.95	17.95
KANSAS CITY, MO.	10.10	18.20

(U. S. Tax Extra)

GREYHOUND TERMINAL  
203 Union At Hernando 5-5511

**GREYHOUND**

# Number Threes Are Begging For Egging

By Douglas Marsh

With respect to chapel, Southwestern students may be divided roughly into two classes—the enthusiastic and the blase.

The first group never cut chapel on Mondays, Tuesdays, and Thursdays, except for very good reasons, keep their comments before the service begins to a whispered minimum, and shut up altogether when the service actually starts.

They Sing, Pray, Derive

They sing as well as they can, pray earnestly, and make a real effort to derive some benefit from the address (not always an easy task).

It is rumored that such people actually enjoy worship. This group is a hopeless minority made up of wild-eyed fanatics who are not likely to change the general attitude of smug secularism.

The second group of students, the bored and blase, is much larger than the first and may be further subdivided into three sub-types.

First of all, there is the overt "Bridge-Addict," who has spent all fifteen cuts in the Lair and is now obliged to creep, "like a snail, unwillingly" to chapel. This type of student squirms resentfully on the back row and longingly dreams of seven-no-trumps that might have been.

Undergraduate Agnostics

Then there's the "Undergraduate Agnostic" who chafes against the unfamiliar pew and punctuates the sermon with muttered comments about the "opiate of the masses."

Some students, the "Generally Rude" type, insist on assuming amazingly embryonic positions—curled up comfortably. They shove their knees mercilessly into the long-suffering vertebrae of the worshipper in the seat just ahead. This is known as the casual approach to religion.

Worshippers of this type are also excellent conversationalists. They can discuss everything from anthropomorphism to zoology and do so while the hymns and sermons are going on, of course. When they run out of conversation, they busily study their calculus books or pass around photographs which they inspect with muffled laughter and not-so-muffled comments.

So far at religious chapel, we have been spared the paper airplane treatment—this kind of thing is reserved for Wednesday chapel.

Don't be overly surprised, however, if an egg, tomato, or other guided missile comes sailing through the air during some chapel service.

It may be thrown by a playful student; or it may be Dr. Price getting even with group three.

# Stylus Yells...

(Continued from Page 1)



"Mr Wiggin is Calling"

We have received good material from a number of students. Also, the co-operation from all the members of Stylus has been all I could ask, and they have worked conscientiously to review and criticize all material submitted.

I appreciate your interest in a good literary publication, and I congratulate you for an editorial policy aimed at better quality activities and achievements from all campus organizations.

Where its possible you might check more carefully for facts before printing editorials, but in any case the Sou'wester this year has been remarkably good considering your small staff and the pressure of early deadlines. I wish that more students would become interested in the valuable experience gained by working with a college paper. It can be the most influential center of campus life, but remember, this also demands that it be the most responsible.

Ed Francisco  
President, Stylus

**KLINKE BROS.**  
**ICE CREAM**  
Served at  
**LYNX LAIR**

**COMING**  
**Apr. 5 thru Apr. 11**  
**Tommy Dorsey**  
AND HIS  
NATIONALLY FAMOUS  
ORCHESTRA  
at the  
**Hotel Clardge**  
**B Room**  
Sorry—No Special Privileges  
Passes honored during this period.  
Reservations should be made early.  
Phone 5-2511.

Zinc Etchings  
Copper Halftones  
Commercial Artists

Mid-South Engraving Co., Inc.  
26 S. THIRD ST. • MEMPHIS 3, TENN. • PHONE 38-1447

MANY people, who had lost the "listening habit," have now discovered that they can listen all day with the greatest of pleasure to WFAK, the "Good Music" Station. Please join us by tuning YOUR radio to 1480 today!

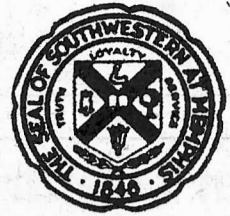
**DIAL**  
**WFAK**  
**1480**

Presenting  
The Singing Trumpet  
and  
Voice of  
**RAY ROBBINS**  
and His Orchestra  
with  
Louise Carroll  
Vocalist

**Hotel Peabody**

**LOEW'S STATE**  
Presents  
**Red Skelton**  
in  
Two of MGM's  
biggest all time hits  
"WHISTLING IN THE DARK"  
and  
"WHISTLING IN DIXIE"

The Sou'wester  
MEMPHIS, TENNESSEE  
ESTABLISHED 1919



Published Weekly By Students  
Of Southwestern

Entered as second class matter at the post office in Memphis, Tennessee, under the act of March 3, 1948.

Editor.....Betty Wood  
Managing Editor.....Toby Horn  
Society Editor.....Patricia Riegle  
Sports Editor.....Don Ramier  
Sports Writers.....Chandler Warren, Billy Ford, John Maxwell  
Staff Writers.....Bill Mitchell, Orley Lilly, Margaret Jones, Ray Hill, Annette Turner, Douglas Marsh, Helen Walker.  
Photographer.....Willie Bow  
Circulation Manager.....Vera Burns  
Business Manager.....George Wilson  
Asst. Business Manager.....Joan Stewart

Sou'wester day phone.....7-1800  
Sou'wester night phone.....7-5363

# Spring Enthusiasm

Baseball, tennis, and track have begun, and for the first baseball game there was an especially good spectator turn-out. Southwestern has excellent teams competing in all spring sports; they well deserve our vernal enthusiasm.

In order that every one attending will be accommodated with a maximum of convenience, bleachers will be placed at the baseball diamond, which will be ready soon, and by the tennis courts.

Spring Sports Winners

Although the spring sports haven't been too well attended in the past, apparently this season is giving birth to two new trends—better sports attendance and winning teams.

At any rate, the boys are bound to do better if their friends and sponsors, the students of Southwestern, go out to watch them win.

—Lindsay Stephenson

# Another Deadline

The Publications Board has issued a new policy for the Sou'wester, which will go into effect next Monday, March 31.

All articles for publication in the Sou'wester must be turned in by 6:00 p.m. Monday before they are to be published. Each organization, fraternity, sorority, club, or other society, is responsible for submitting news stories and features about its own activities in acceptable journalistic form.

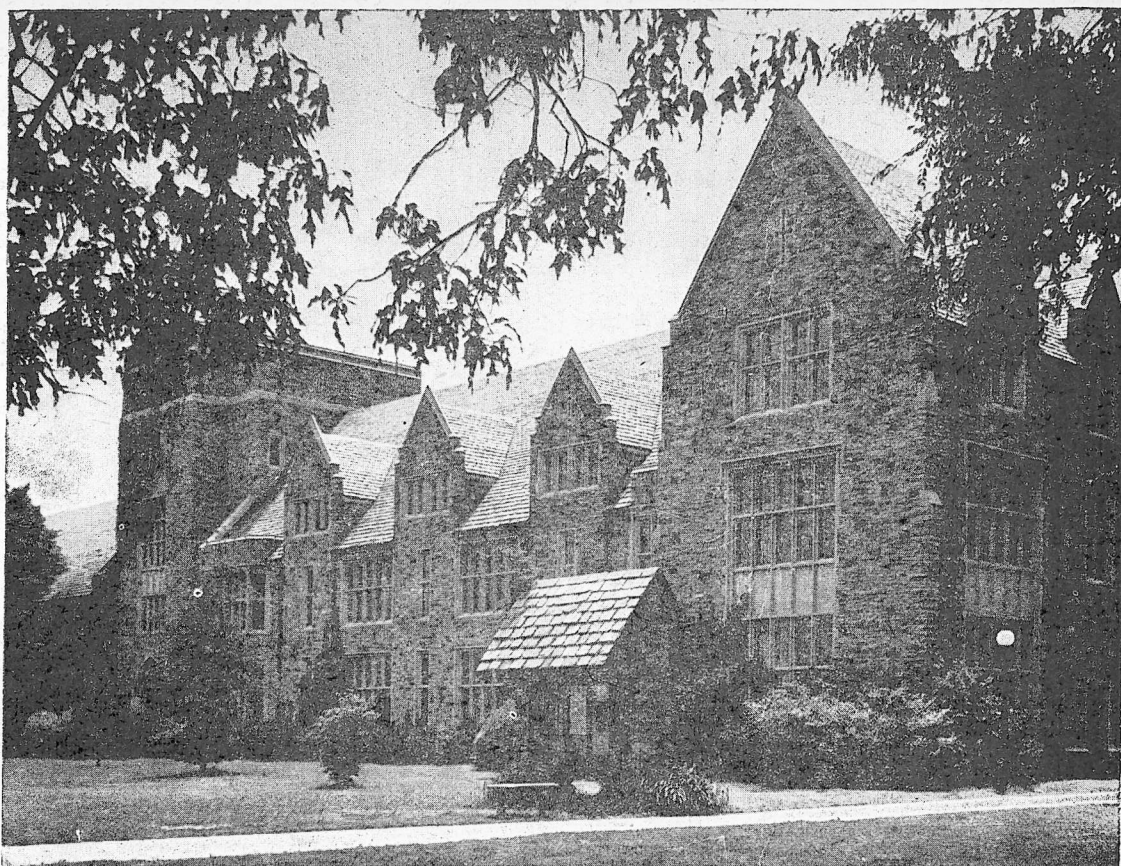


# Southwestern Campus Has Lasting Beauty

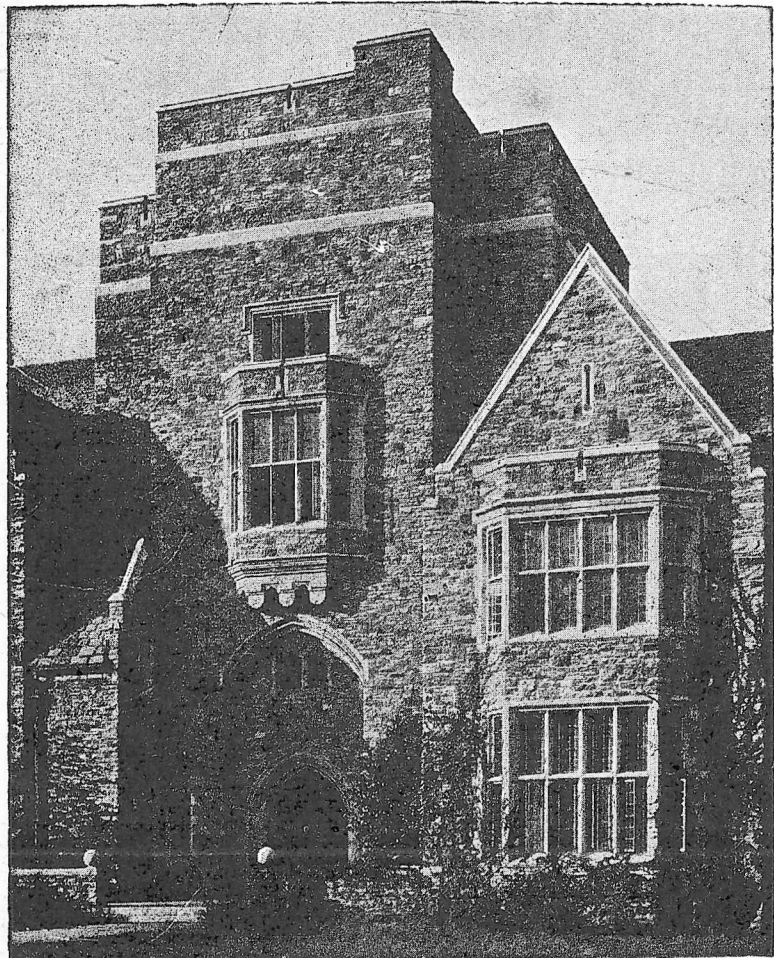
The campus of Southwestern is a beautiful tract of one hundred acres, much of which is wooded. It is within the city limits of Memphis, Tennessee, on North Parkway, just opposite Overton Park. The campus fronts on North Parkway, and extends north along University Boulevard for one half mile to Jackson Avenue. It is a campus of unusual beauty, and the grounds alone have a present valuation of at least one half million dollars.

The buildings are all of stone, in the collegiate Gothic style of architecture, and no pains have been spared to make them enduring and beautiful. The stone used in the buildings was brought from the college's own quarry at Bald Knob, Arkansas. The stone is a ferruginous sandstone, as hard as granite and as enduring, but not quite so heavy. It is beautifully colored, is impervious to acids, has successfully met all government tests, and is an ideal building stone.

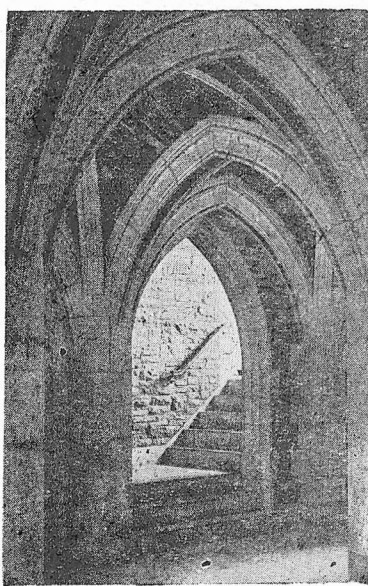
These buildings set a new standard of collegiate architecture in the South.



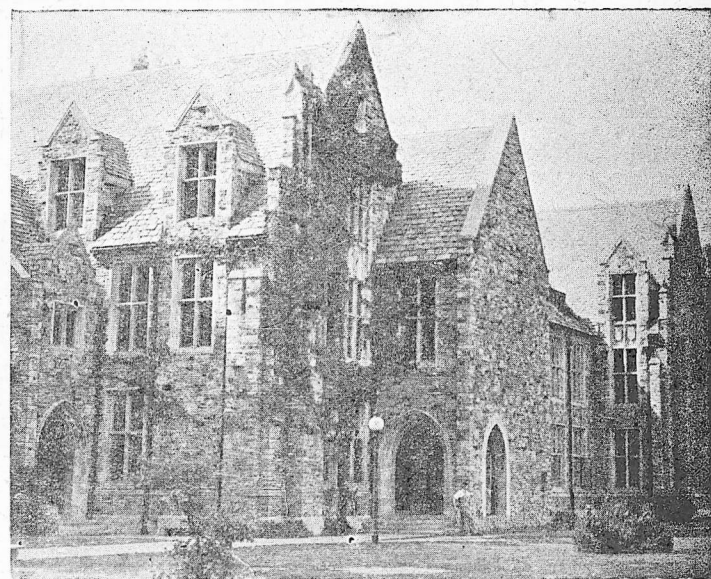
**PALMER HALL—ADMINISTRATIVE OFFICES, CLASS ROOMS, AUDITORIUM, LIBRARY**



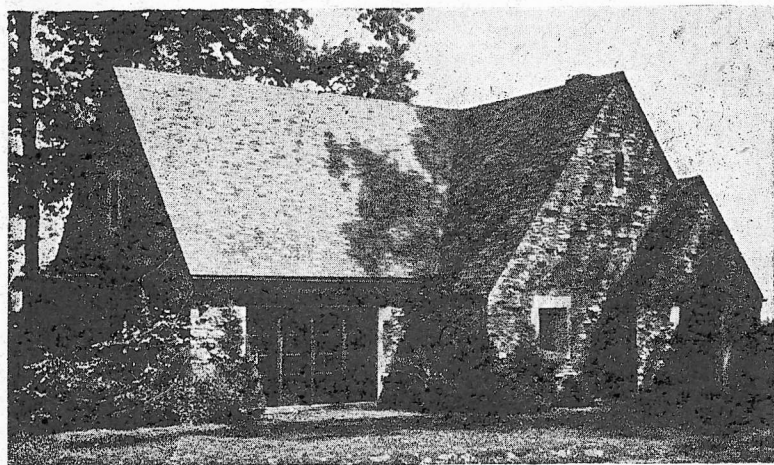
**THE TOWER, MAIN ENTRANCE, AND SOCIAL ROOM**



**CLOISTER, PALMER HALL**



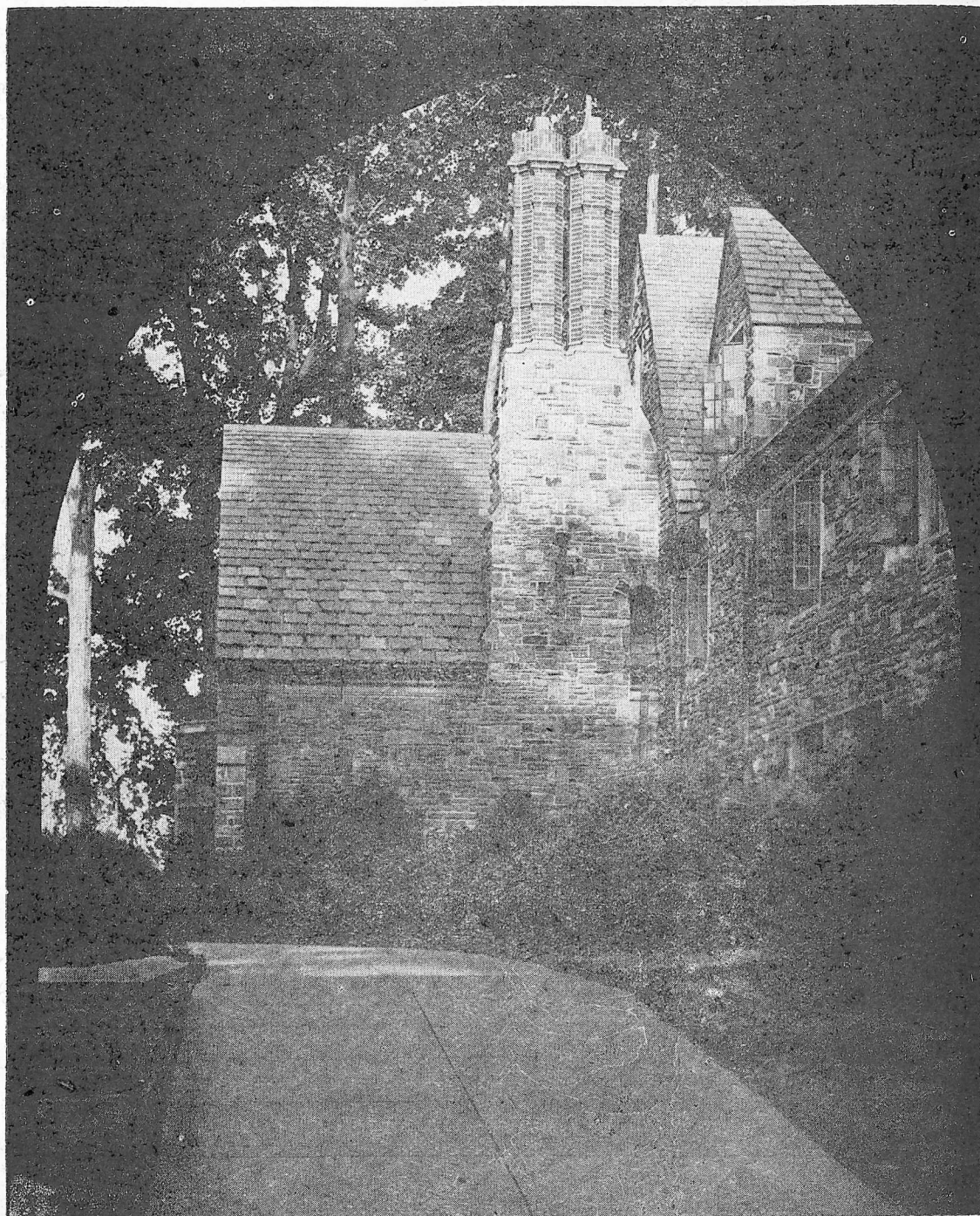
**THE SCIENCE BUILDING**



**THE SIGMA ALPHA EPSILON LODGE**



**PROCESSIONAL AT OPENING CONVOCATION**



**ROBB HALL—MEN'S DORMITORY—SEEN FROM CONNECTING CLOISTER**



Spotlight—

# Baseballers Perfect— Win Two In A Row

By Don Ramier

Three cheers for our all-triumphant baseball team. Two straight wins over Aurora College place them well on the road to a good season. But I don't think this is as great an indicator as it would seem.

The Aurora team wasn't exactly a flawless group; in fact they were not good at all. Mississippi College humbled them to a tune of 19 to 1. Still our Lynx baseballers have won two consecutive games, and that's perfection.

### Our Sluggers

In winning these two games our sluggers have been quite erratic. They committed a blushing total of 21 errors. But on the other hand the team batted an over-healthy .389 and scored 26 runs. Crais is leading the pack with .750, while Lee and Allen are second at .500.

An intra-squad track meet is scheduled tomorrow at 2:00 p.m. on the Fargason racing grounds. This is to give the runners an opportunity to taste a bit of competition before the meet at Arkansas State Saturday week. Coach Johnson announced that anyone not on the track team who is interested in participating in the weight events is welcome to test their skill tomorrow.

An interesting event in the golf-

ing world is to take place this afternoon. Our links team will take the field in an effort to subdue a skillful and somewhat brainy faculty team, composed of Professors Embry, Smith, Kelso, and Strickler.

# Sigma Nu's Cop Honors For Badminton Singles

Sigma Nu, winning the Badminton Tournament, has recaptured the Intramural League top place, with Kappa Alpha following closely.

Sigma Nu's Gerald Pierce defeated KA's Chandler Warren in the number one singles; SN's Tommy Crais defeated KA's Buck Looney in the number two singles; and ATO's Bill Christie and Jim Lapsley defeated KA's Roxie Lee and Charles Rhodes in the doubles.

In the first intramural softball game of the year, on March 24, SAE defeated SN 8-6. On the same day the Independents defeated KA. The decision is being contested by KA.

Other intramural softball games will take place at 4:00 p.m.

Friday, March 28

SAE vs. ATO..... East diamond  
SN vs. KA..... West diamond

Monday, March 31

SN vs. Ind..... East diamond  
KA vs. ATO..... West diamond

Friday, April 4

KA vs. SAE..... East diamond  
ATO vs. Ind..... West diamond

Monday, April 7

ATO vs. SN..... East diamond  
Ind. vs. SAE..... West diamond

# Seven Men Are In 'S' Club First Time

The "S" Club has taken into membership seven new boys who won their first letters during the past basketball season. They are Beard, Cunningham, Horton, Lambreth, Maxwell, Treadway, and Weed.

After the traditional egg-race a meeting was held, and the following officers were elected: President Don Ramier, Vice-President Bob Crumby, Secretary-Treasurer Ron Davis.

Plans were discussed to improve the "S" Club room, install a radio, and add furniture and recreational facilities.

## Southwestern Barber and Beauty Salon

649 No. McLean  
Phone 36-8025

## EAST MEMPHIS LAUNDRY-CLEANERS

Let a S'wester Alumnus Serve You  
Serving East and North Memphis  
3436 Summer Phone 48-8066

## WHITFIELD KING & CO.

Incorporated  
GENERAL INSURANCE

Phone 5-3581

Memphis, Tennessee

81 Monroe Ave.

## TOWN and Country

### Drive-In Restaurant

2842 Poplar

Proud to Print the SOU'WESTER!

## Iri-State Press, Inc.

Specialists in Newspapers

277 Jefferson Ave.

Phone 5-6171

# CHESTERFIELD—LARGEST SELLING CIGARETTE IN AMERICA'S COLLEGES

## AT MARYLAND

### Varsity Grill

*We certify that Chesterfield  
is our largest selling cigarette  
by 2...to 1*  
SIGNED *E.F. Zalesak*  
PROPRIETOR



# 2 to 1

*because* CHESTERFIELDS are much MILDER  
and give you the ADDED PROTECTION of  
**NO UNPLEASANT AFTER-TASTE\***

\*FROM THE REPORT OF A WELL-KNOWN RESEARCH ORGANIZATION