

The Sou'wester

Southwestern at Memphis

36

36th Year

MEMPHIS, TENNESSEE, SEPTEMBER 14, 1954

Volume 37, No. 1

WELCOME NEW STUDENTS!

Seniors To Return For Early Rush

Scores of upperclassmen have descended upon the campus this week to take part in the fall rushing program of sororities and fraternities. The experiment in early rush is being tried this year in an attempt to find a plan which will be more satisfactory than the ones previously used. Students interested in joining the fraternal organizations will be asked to make their choices at the beginning of the school year instead of later in the fall as was done in the past.

The national sororities at Southwestern are: Alpha Omicron Pi, Chi Omega, Delta Delta Delta, Kappa Delta, and Zeta Tau Alpha. The national fraternities are: Alpha Tau Omega, Kappa Alpha, Kappa Sigma, Pi Kappa Alpha, Sigma Alpha Epsilon, and Sigma Nu. Additional information on each organization is available in the Student Council handbook.



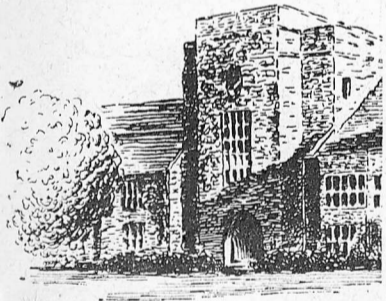
This crowd of students is typical of the spirit found at Southwestern. Throughout the year this spirit is maintained by bonfire rallies and other pep meetings. The ancient fieldhouse in the background of this picture has given way to the new gym which will be dedicated this fall.



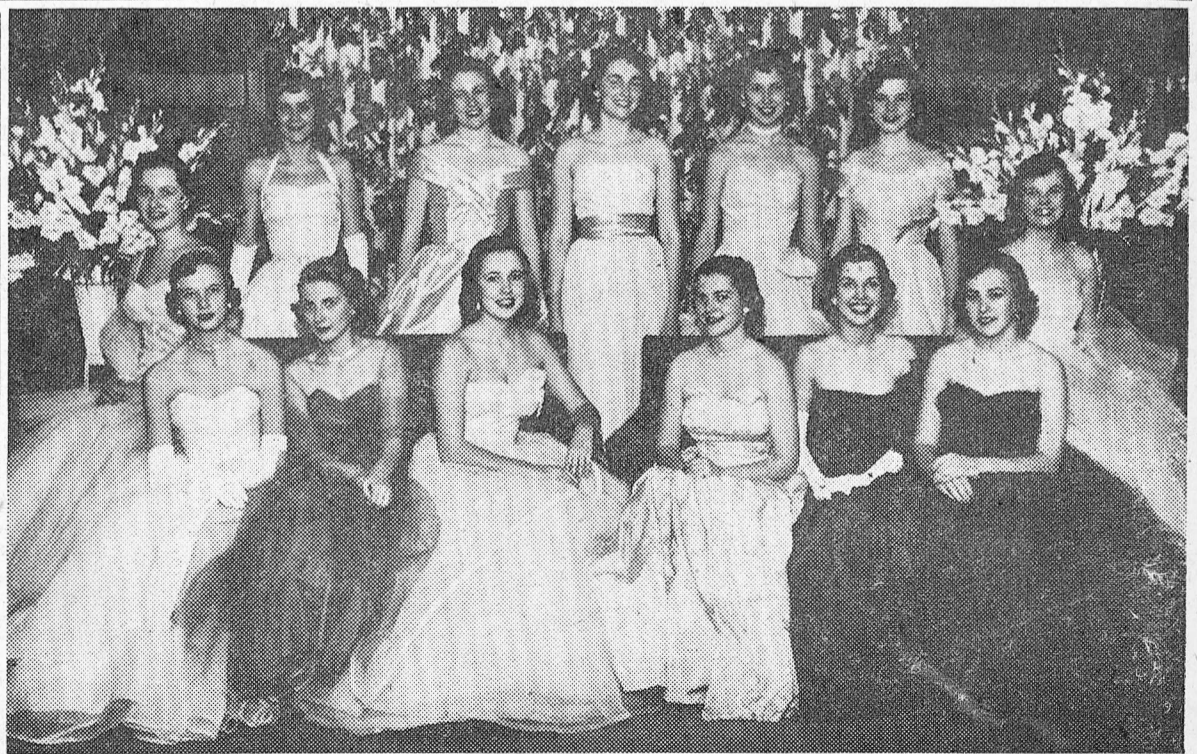
Social activities are an important part of student life. Often fraternity balls give the freshmen an opportunity to honor senior members. In addition to the fraternities, other organizations sponsor various kinds of get-togethers. Parties of all kinds, from the April Fool Ball (page 7) to sock-hops, fill many weekends on the school calendar. (See pages 4 and 5 for more social news.)

Orientation Begins Today

This first issue of Sou'wester is dedicated to the more than two hundred and fifty new students who begin their orientation period today. It has been designed especially for you in an effort to introduce you, through pictures, to some of the many things that await you as students at Southwestern. Below, for example, is a scene from the "shoe-pile," one of the chances upperclassmen and frosh males will have to meet the new ladies. On the following pages are other freshman activities as well as scenes from student life which will soon become familiar to each of you. It's the Sou'wester's WELCOME TO NEW STUDENTS.



Southwestern's athletic program is on the upswing. All major sports now have both varsity and intramural competition. (See page 8.)



Each year many students are honored by the school, the faculty, and by their fellow students. Some are chosen for their beauty (above), others for scholarship, or service, and some on the basis of popularity. In addition to these individual honors (page 7) there are a number of specific organizations which invite into membership students who are outstanding in their particular field. (See page 5.)

The Sou'wester

MEMPHIS, TENNESSEE
ESTABLISHED 1919



Entered as second-class matter at the post office in Memphis, Tenn., under the act of March 3, 1948. Published Weekly by the Students of Southwestern

Editor Dan Adams
Managing Editor Emmett Buford
Feature Editor Joanna Kindig
Society Editor Clara Ann Marmann
Sports Editor Eric Mount

Business Manager Rachel Gobbel

Publications



DAN ADAMS
SOU'WESTER EDITOR

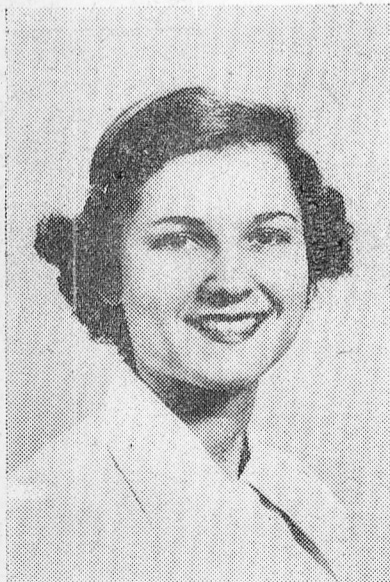


RACHEL GOBBEL
Sou'wester Business Manager

Southwestern has no Journalism Department, making it necessary for all publications to be handled by volunteers. The *Sou'wester*, the official school newspaper, is published weekly by the Editor, Business Manager, and a selected staff. New students who are interested in any phase of journalism are invited to contact the Editor. The only requirement is not previous experience, but a willingness to work and learn.

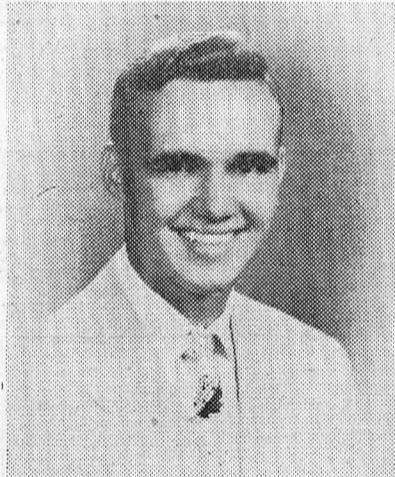
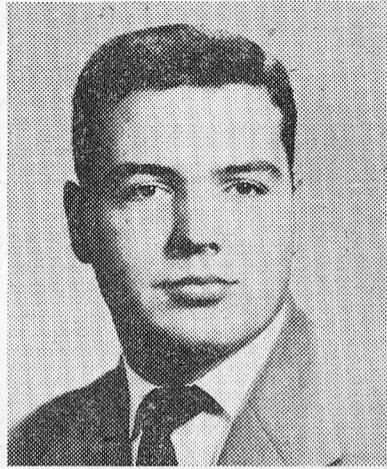
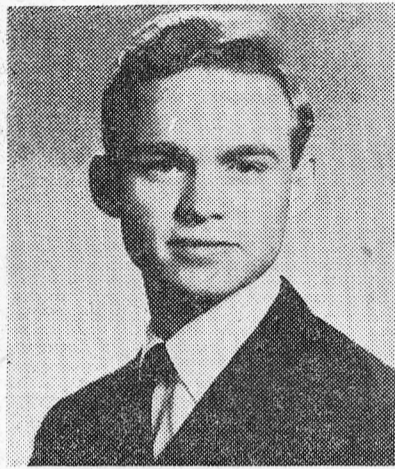
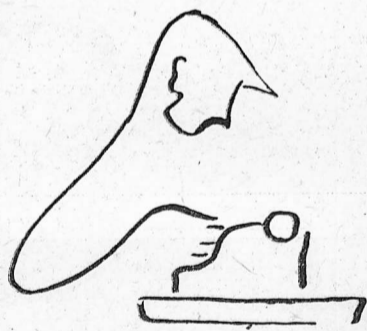


MARY McCLINTOCK
LYNX EDITOR



GERALDINE DOZIER
LYNX CO-EDITOR

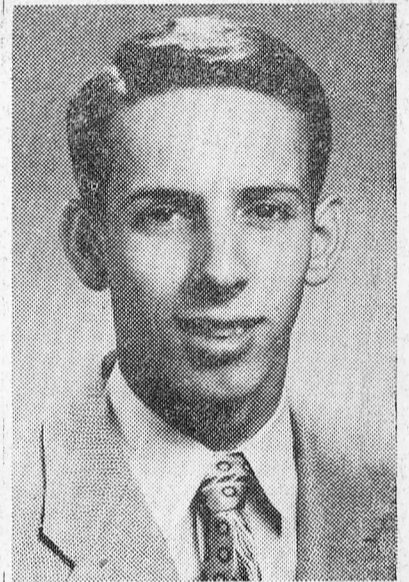
The Lynx, college annual, is published each May and carries a record of the events of the year in pictures. Work is available in such departments as make-up, photography, organizations, sports, and business management, and may be had by contacting the Editors this fall.



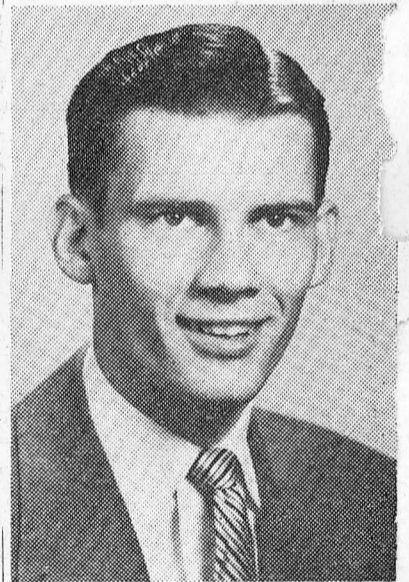
Student Body Officers: (Left column, reading down) Hollingsworth Mitchell, President; Ann Barr, Commissioner of Religious Activities; Joe Eades, Commissioner of Social Activities; Dot Henning, Commissioner of Undergraduate Women. (Right column) Reg Germany, Vice-President; Claudia Owen, Secretary-Treasurer; Mary Rordiguez, Commissioner of Publications; George Russell, Commissioner of Athletics.

Each spring the student body selects three top officers and five Commissioners to handle its work during the following school year. To these are added the class presidents and representatives to form the Student Council.

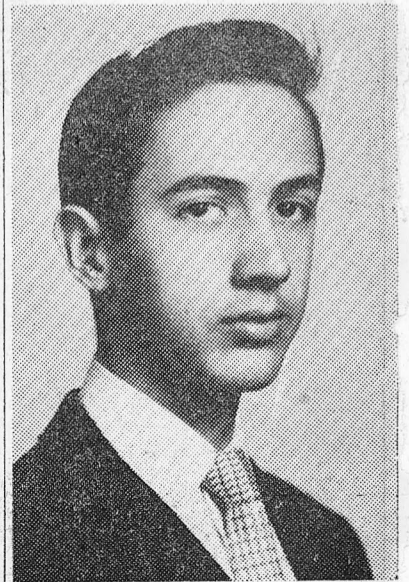
An integral part of the students' self-government is the Honor System which is responsible for strengthening and fostering the same high spirit of honor and integrity which characterized the student body from the earliest years. Gerald Smith is the new President of the Honor Council, and the new Secretary is Louise Aikin.



Senior class: President, Truman Nabors; vice-president, Lee Weed; sec.-treas., Dot Harris; representative, Ann Caldwell.



Junior class: President, Tom Tosh; vice-president, Bryan Small-ey; Sec.-treas., Catherine Coleman; representative, Erin Moody.



Sophomore class: President, Do Parker; vice-president, Eric Mount; Sec.-treas., Nelie Brown; representative, Harriette Matthews.

Religion

Southwestern is sponsored by four Presbyterian Synods, and as a Church school lays strong emphasis upon the religious life of the student. Required attendance at Chapel services three times weekly provides an opportunity for religious instruction by qualified teachers, ministers and laymen. Private devotions are also encouraged.

The denomination responsible for the school by no means dominates the religious picture. Students are urged to attend the church of their choice and nearby congregations often furnish transportation to and from the campus. Four major denominations support youth groups on the student body level: the Baptist Student Union, Canterbury Club (Episcopalian), Methodist

Student Movement, and Westminster Fellowship (Presbyterian).

The Commissioner of Religious activities is selected by the student body to preside over the Protestant Religious Council. This Council coordinates the working of all religious organizations on the campus and seeks to promote Christian truths and ideals through honest thought, genuine worship, wholesome fellowship, and unselfish service.

The Ministerial club was disbanded last year in favor of the Religious Seminar which includes all men and women who are looking toward lines of Christian service. At stated meetings outstanding leaders present current religious and world problems.

Circular in form, the red and black seal of Southwestern is centered by a black shield representing faith. Quartering the shield is a St. Andrew's Cross denoting Christianity, and in the middle of the cross lies an open Bible, the heart of Southwestern's being. Each of the shield's four divisions bears a symbol representing a period in the college's history: as a Masonic College at Clarksville, founded in 1848; as "Stewart College" (1855-75); as "Southwestern Presbyterian University" (1875-1925), and finally as "Southwestern at Memphis" when it moved to Memphis.

The intertwined sprigs of oak and laurel under the shield signify strength and victory. Surrounding the shield on the other three sides are the words "Truth, Loyalty, Service"—the fundamental precepts of Southwestern.

Here's What's In Store For Freshmen



Orientation is only the beginning! During the fall, life at Southwestern centers around Freshman activities and the business of making the change from high school days at home to a new way of life at college.

Upperclassmen know from their own experience many things that will help new students quickly become a real part of a student body that is small enough to enable each person to know everyone else yet large enough to meet their every need. The student councilors, Memphis mothers for out-of-town girls, faculty advisors, and big brothers in the fraternities will help you with any problems that may confront you, and, just to remind you once in a while that you are no longer a high and mighty high school senior but are now a

lowly college freshman, we'll have a few weeks of hazing.

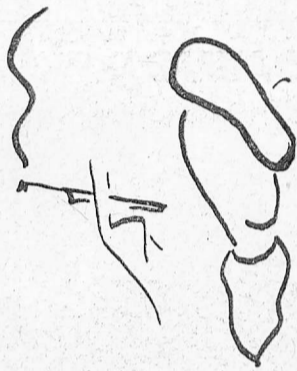
Gone are the days when hazing meant physical punishment and mental anguish. Many colleges still use some of the old-fashioned methods, but here the paddles are more psychological than physiological. You'll discover that the rules to which you will soon be introduced are enforced, not just for fun, but for your benefit. "Suffering" through hazing unites the Freshman Class and strengthens the bond between old and new students.



Standard equipment for the freshman is a sign bearing his name and home town to be worn on his back, and baby bonnets for the girls and beanies for the boys to be worn on the funniest-looking place the upperclassmen can find—usually the freshman's head.



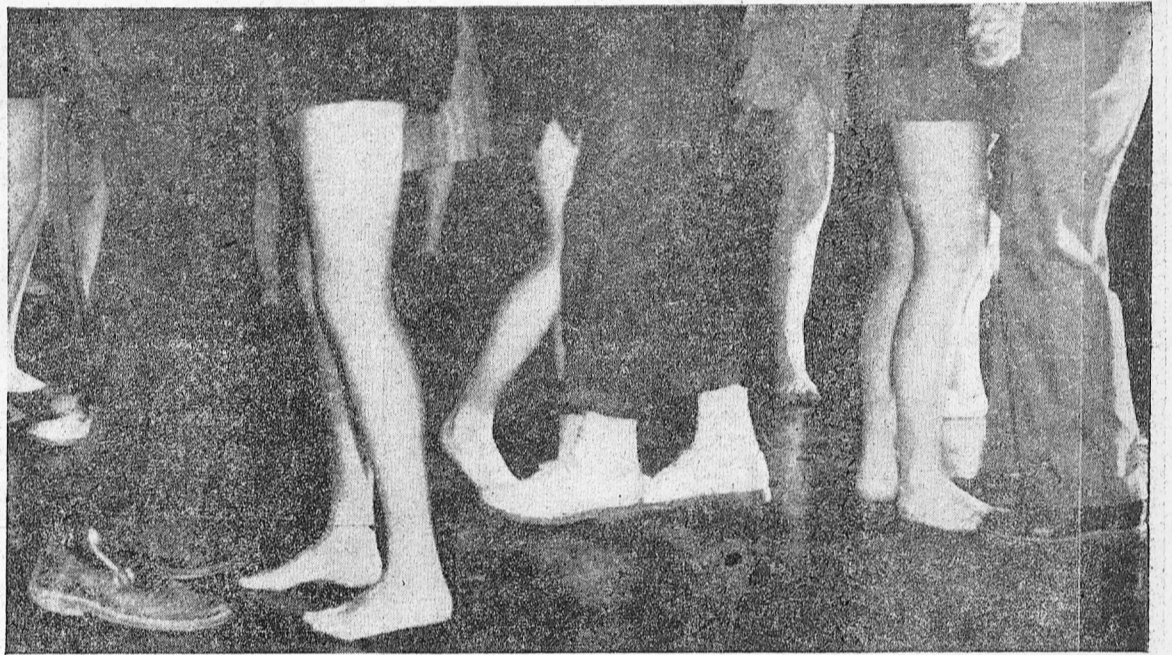
The Sanhedrin (above) and Women's Undergraduate Board "take care" of those who "goof." A good lecture usually gets the point across, but the habitual offender may find himself wearing a gunny sack to dinner or carrying bricks to class.



Frosh idea of seniors.



Vice versa.



Evenings of fun and fellowship are an important part of the freshman program. Parties, formal dances, sock-hops, and nondescript get-togethers like the one above fill the fall calendar.



It'll be over before you know it! When the time comes to throw the signs, caps and bonnets into the flames you'll be a permanent part of Southwestern.



The nice thing about hazing is that you can dish it out for three years and only have to take it once. New students will be introduced to the rules of hazing during the orientation period.



RUSH—The fraternal life of the college begins officially this week. Costume parties and formal gatherings will honor the new students.

TALENT NIGHT!



TALENT NIGHT—Zeta Tau Alpha sponsors this program to choose Mr. and Miss Talent. Other individual honors are on page 7.

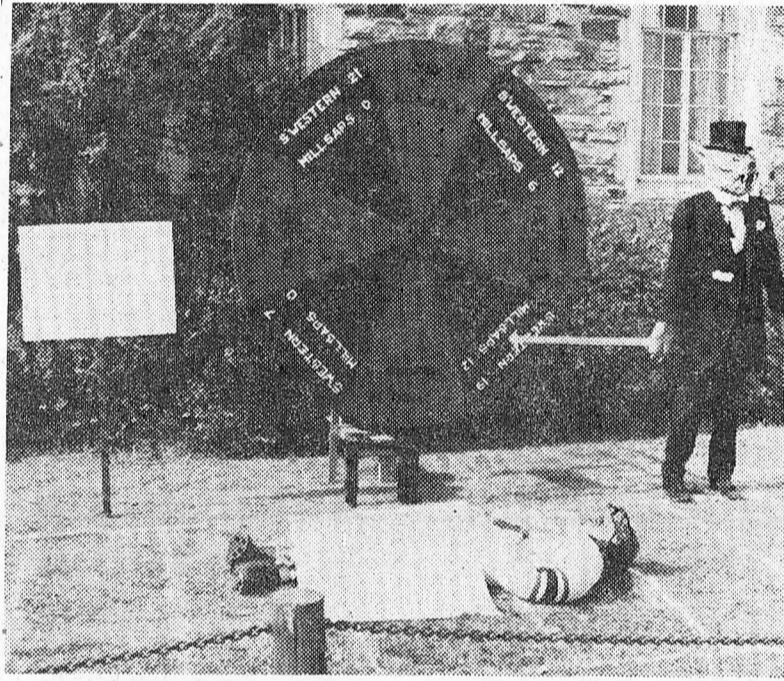
Social and group activities at Southwestern center around the sororities and fraternities. In addition to their special dances (below), these groups foster friendly competition that contributes greatly to the spirit of the Student Body. On this page are pictured the winners of last year's three major competitive events.



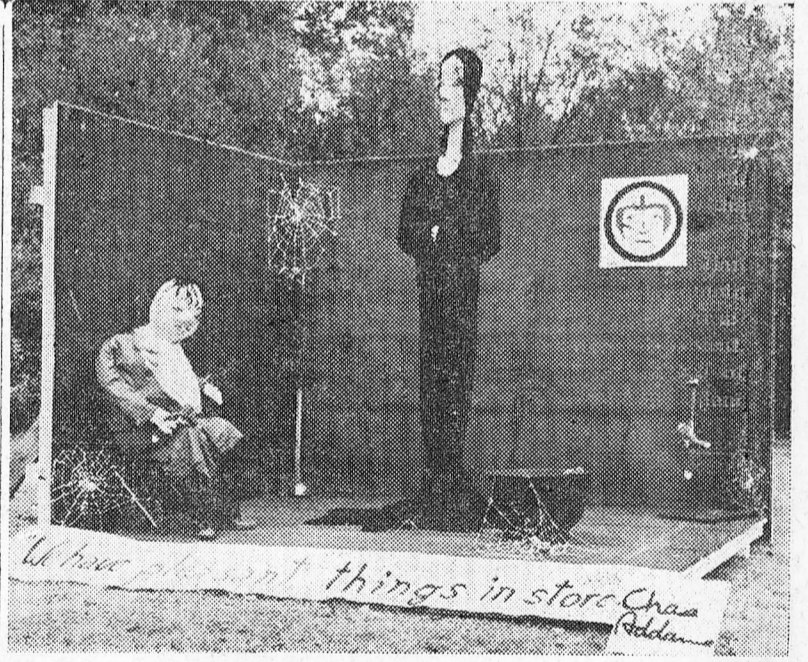
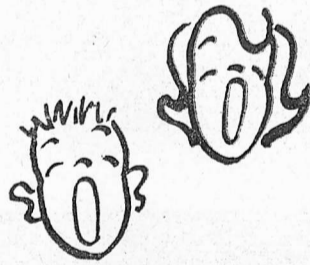
ALL SING—Kappa Delta sponsors this evening of music. Each Greek letter organization presents two songs, and the fraternity and sorority adjudged winners are awarded cups. Last year's winners (left) were the AOPi Sorority and the ATO Fraternity. The AOPi's selections were the "Prayer" from Hansel and Gretel and "Gypsy."

The ATO's numbers were the "Soldiers' Chorus" from Faust and the "Wanderer's Song." The runners up were Delta Delta Delta with "I'll Be Seeing You" and "Louisiana Hayride," and Sigma Nu with the "Battle Hymn of the Republic" and "Embraceable You." The KD's opening skit was "Singing in the Rain."

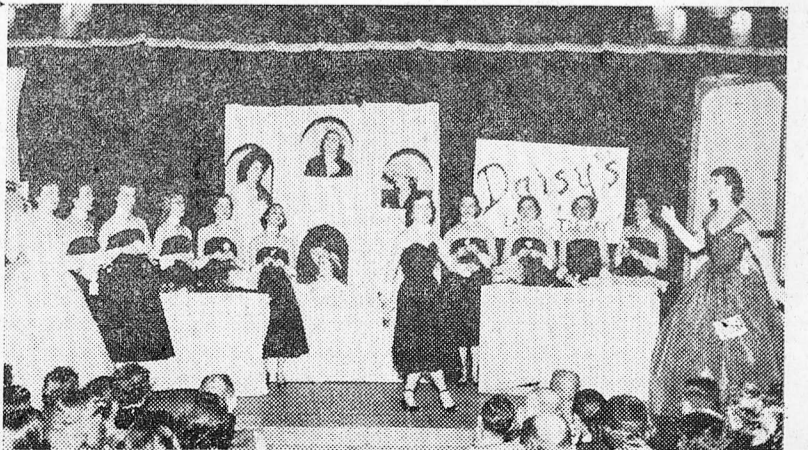
HOMECOMING



HOMECOMING — Sigma Nu and Delta Delta Delta were the winners in last fall's Homecoming Display Contest. The title of the Sigma Nu decoration was "Wheel Of Fortune" and depicted a Lynx "gambler" standing over a dead Millsaps Major. A Charles Addams cartoon was the Tri-Delta display. They portrayed the whole grisly Addams "family," and predicted dire things in store for Millsaps. Second place winners were KA and AOPi.



STUNT NIGHT — Alpha Omicron Pi awards cups to the sorority and fraternity presenting the best original skits. Last year's winners were "Daisy's Ladies' Toggery" by Kappa Delta, and Kappa Alpha's "Paradise Lost Again." Second place winners were Zeta Tau Alpha with "Ye Newe Toy Shoppe," and the Kappa Sigma "Sugar Boys From Basin Street." The AOPi introduction was "Another Opening, Another Show."



Honorary Organizations

Alpha Psi Omega, national honorary dramatic fraternity, provides an honor society for those achieving a high standard of work in dramatics and promotes a wider fellowship for those interested in the college theatre. Alpha Psi sponsors plays presented periodically in Hardie Auditorium (right).

Chi Beta Phi is a national honorary scientific fraternity. Membership is limited to students majoring in one of the sciences or mathematics who have completed 25 hours in their major and a total of 60 academic hours with at least a 3.0 average.

Eta Sigma Phi, national classical languages fraternity, was established at Southwestern in 1952. Its purpose is to promote interest in all aspects of Greek and Roman literature, art, and life. Those who have a B average in advanced courses in either Greek or Latin are eligible for membership.

Omicron Delta Kappa is a national leadership fraternity organized to recognize outstanding men in the junior and senior classes. Membership is on the basis of achievement in one of the six phases of campus life: scholarship, athletics, religious and social affairs, publications, music, speech and dramatic arts. Men students must have an average of at least 2.4 to be tapped.

Pan-Olympic, honorary women's athletic association, was founded in 1948 at Southwestern in order to create individual interest in intermural activities and to recognize outstanding women participants in intermural athletics. Eligibility for membership is based on a point system with points given for time



spent and places gained in tournaments.

Pi Kappa Lambda, national honorary music fraternity, rewards and distinguishes outstanding work in the musical field. Students are elected to membership on the basis of their records in all subjects and membership is open only to candidates for the Bachelor of Music degree.

Phi Beta Kappa was installed at Southwestern on the hundred seventy-third birthday of the society's founding. Election to Phi Beta Kappa is the highest scholastic honor which can be conferred upon a student. To be eligible, a student must have an over-all average of at least 3.5 over seven semesters of approved college work.

Psi Chi, national honorary psy-

chology fraternity, stimulates further interest in psychology by affording its members contacts with psychology as a profession. Membership is limited to psychology majors with at least a B average.

Stylus, an honorary literary society, is designed to stimulate and recognize literary activity on the campus. Members are tapped on the merits of creative works submitted to the club. The Stylus Journal is the annual publication of the club.

Tau Kappa Alpha, national forensic honor society, has as its purpose the stimulation of forensic attainment. Under its auspices the Southwestern debaters make several trips to other colleges each spring.



The April Fool Carnival is a major highlight of Southwestern's social season. An original play chosen from those submitted by school playwrights starts the evening off. A costume ball (above) in Ferguson Field House follows. The King, Queen, Lord and Lady-in-waiting, and the Lords and Ladies of the royal court are elected by the student body. (See page 7.)

Torch, honorary society for senior women, recognizes outstanding women who have attained high standards of leadership and schol-

arship throughout their college careers. Membership is limited to ten women who are tapped in May of their junior year.

Clubs

The History Club, composed of history majors and others interested in this subject, was formed to further a practical interest in the study of history. At frequent intervals during the year, the members take trips to places of historic interest in Tennessee and surrounding states.

The International Relations Club, affiliated with the Carnegie Endowment for International Peace, was established in 1948 at Southwestern to promote international understanding through related forums and lectures. The club encourages students to travel and study abroad, and creates a consciousness of international problems on the campus.

The Psychology Club works in conjunction with Psi Chi. Program talks are featured at the meetings, and field trips are made to various centers of psychological and psychiatric research in the Memphis

vicinity.

Sans Souci, the French Club, was organized to promote an interest in French literature, language, and customs. All advanced French students are invited to attend the monthly meetings.

The Southwestern Players work with Alpha Psi Omega in presenting top-flight entertainment. Any student interested in any phase of theatrical work may help in this group.

The Spanish Club promotes interest in the Spanish language, literature and customs. All Spanish students are invited to attend the meetings.

The Young Women's Christian Association seeks to promote growth in Christian life and character, and to develop the physical, mental, and spiritual resources of its members. Every woman student is invited to become a member.



The modern dance group (directed by Joye Thompson) is one of many special classes offered at Southwestern. It is characteristic of the wide variety of activities the college offers the student.

Music



The Southwestern Singers and Orchestra are well known throughout the Mid-South. The college's magnificent a cappella choir is pictured here with the St. Louis Symphony Orchestra on a recent tour. The Singers perform at vespers, morning chapel, various schools and churches in the vicinity of Memphis and on radio and television pro-

grams. Each Spring the choir goes on an extended tour of neighboring states which this year took them from Gulfport, Mississippi, to Shreveport, Louisiana. The Orchestra, composed of students and faculty members, presents music of the highest caliber. In addition, the college supports a band which plays at athletic events and rallies.



DR. LAURENCE E. KINNEY

Pressing The Profs.

"Montane semper liberi," quoted Dr. Laurence E. Kinney, head of Southwestern's Bible department. "Mountaineers are always free," according to Dr. Kinney who grew up in Huntington, West Virginia, and will proudly boast the fact to any Virginian. In 1926, he received his A.B. from Hampden-Sydney, and a B.D. from Union Theological Seminary in 1929. Dr. Kinney's name appears on the roles of Phi Beta Kappa, O.D.K., Who's Who In America, and Tau Kappa Alpha.

"Skinny" Baker is not a familiar appellation to us at Southwestern, but it was once a well known name in a town called Hamburg, Arkansas. This active young fellow could skin up any tree in a few seconds flat — the agile youth is today known to us as Dr. C. L. Baker, head of Southwestern's department of biology. He spent two years at Henderson College, and then moved to Emory where he received his B.S. and M.S. At Columbia University he earned his Ph.D. Dr. Baker was, at one time, suspended from Emory for about five minutes. The charge: over-cutting chapel. He never went.

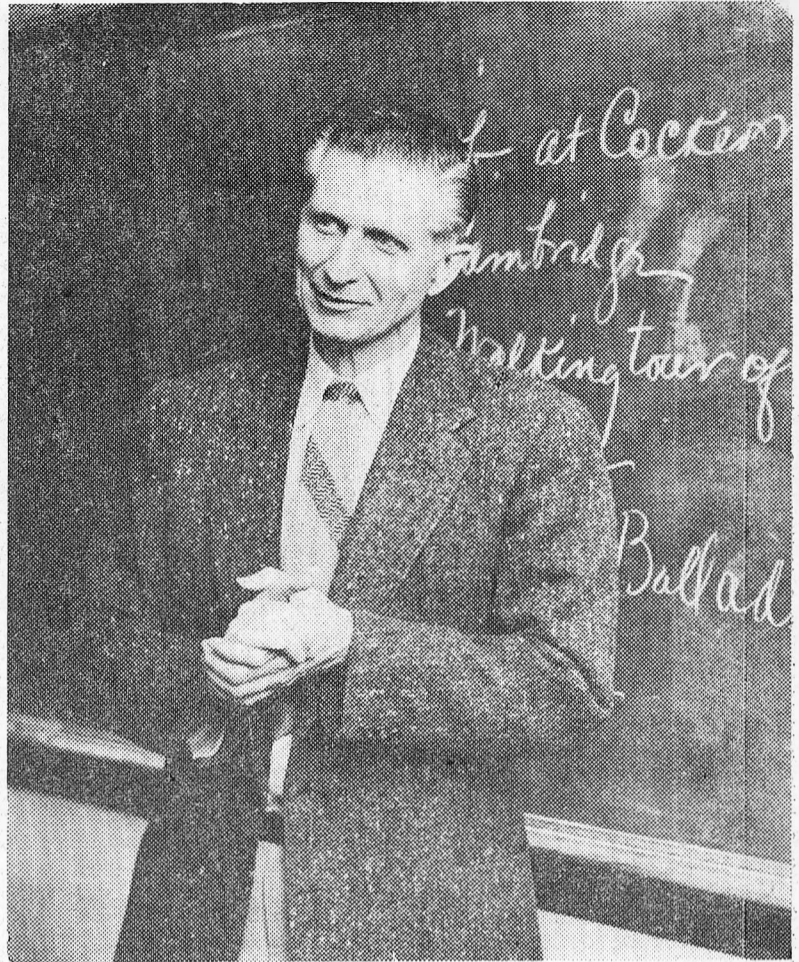
Our professor with the cane and the perpetual smile deserves many thanks from many past and present students of Southwestern. Dr. Ralph C. Hon, chairman of the college's economics department, first instigated the present honor scholarship program here. "I have been somewhat of a tramp about going to school," confessed the instructor. He attended Central College, University of Southern California, University of Illinois, University of Washington, D. C., and received his Ph.D. from the University of North Carolina. He is one of the Lynx's strongest supporters, and is an honorary member of the "S" Club.

"I suppose I was somewhat predestined to become a Wordsworthian, a lover of nature," quoted Dr. J. Q. Wolf who heads Southwestern's department of English. "When I was growing up," he continued, "my father had the largest collection of growing wildflowers in Arkansas." Dr. Wolf earned his M.A. at Vanderbilt and his Ph.D. at Johns-Hopkins. He is one of our most versatile faculty members: a singer, instrumentalist, football letterman, photographer, collector of glassware, mountain ballads, and friends.

"I still believe the South won the war," remarked the professor with a smile on his face and a twinkle in his eye. This was the statement of a gentleman and student of the Old South, Dr. W. R. Cooper, who heads the department of history. Dr. Cooper earned his B.A. at Washington and Lee, his M.A. at Harvard, a degree in jurisprudence at Oxford, and a degree in law at the University of Alabama (his home state). He served in the British army during World War I, is an athlete, musician, and gardener.

"Our team wasn't beaten on home ground in four years." This was the proud statement of one never known to us to boast, Dr. R. P. Strickler, classical scholar and chairman of the department of Greek. The statement of this true athlete and lover of sports refers to his basketball team at the University of West Virginia. He studied at Oxford on a Rhodes scholarship, and holds a Ph.D. in Greek, Latin, Sanscrit, and comparative philology from Johns-Hopkins. This student of music and classical literature holds that "It's a joy to read Plato, the greatest prose writer of all time, and a pain in the neck to read Aristotle."

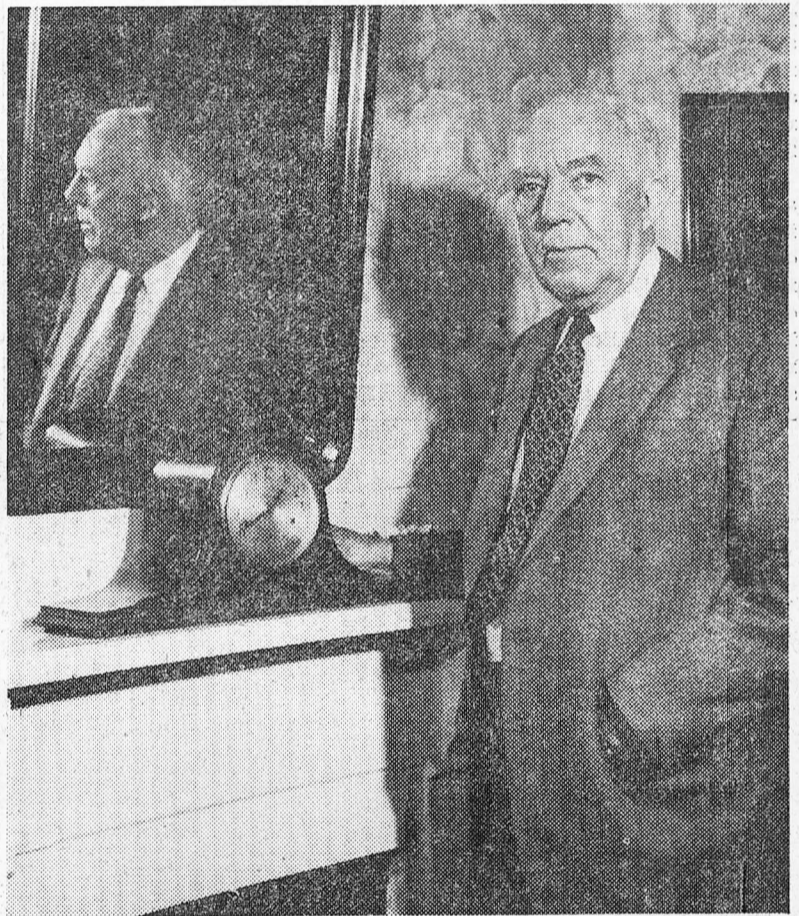
Not pictured is Dr. Llewellyn Queener, professor of Psychology. Dr. Queener received his B.A. from the University of Tennessee and earned his Ph.D. in psychology and religion at Yale, and is an ordained Baptist minister.



DR. J. Q. WOLF



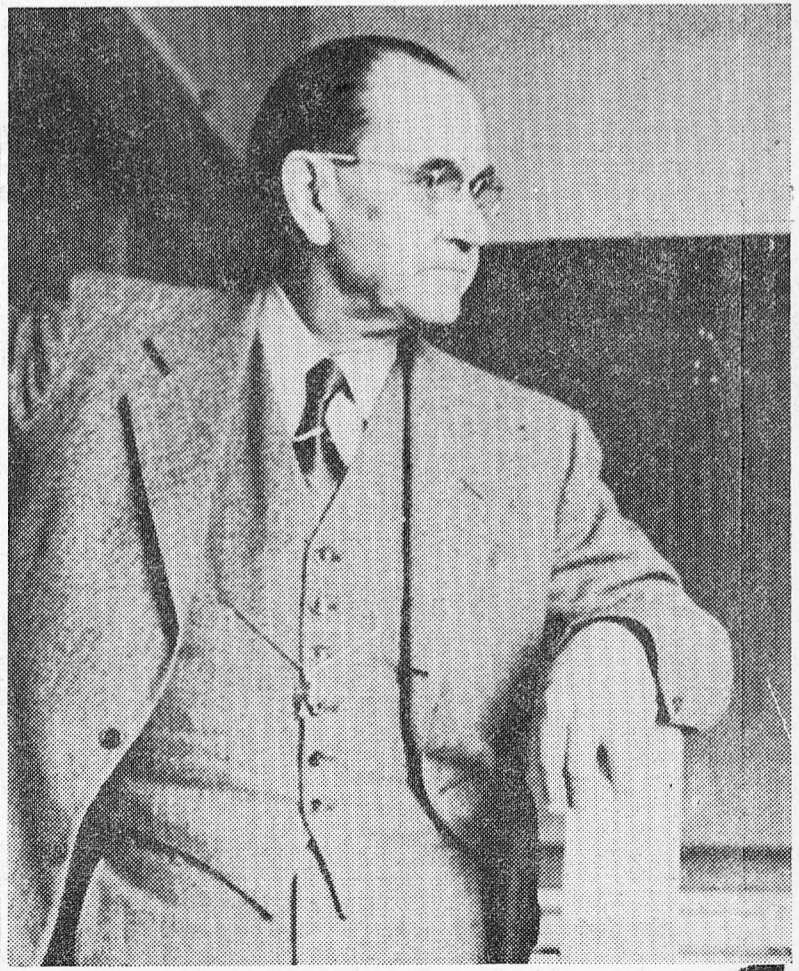
DR. C. L. BAKER



DR. W. R. COOPER



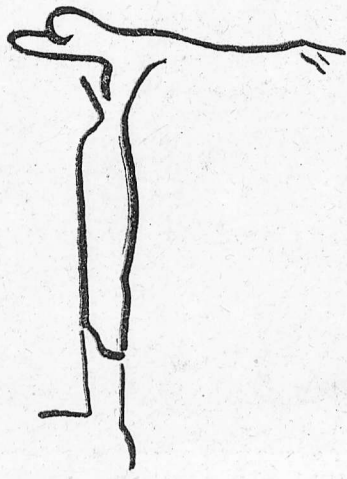
DR. RALPH C. HON



DR. R. P. STRICKLER

S Faculty

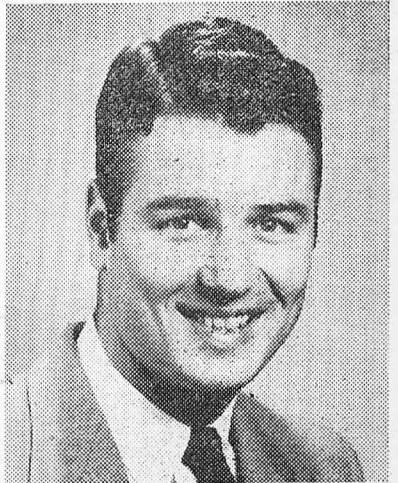
Southwestern is justifiably proud of its fine faculty. The college has secured the services of many of the most able professors in each field, and the students are privileged to study under such learned teachers. Yet, at the same time, the faculty members are also fine folks—sometimes (according to joking students) almost human. The picture at the right, taken at last year's Faculty-Student basketball game, is evidence of that. This Fall the Sou'wester will continue the series called "Pressing the Profs." Excerpts from stories printed recently are on page 6.



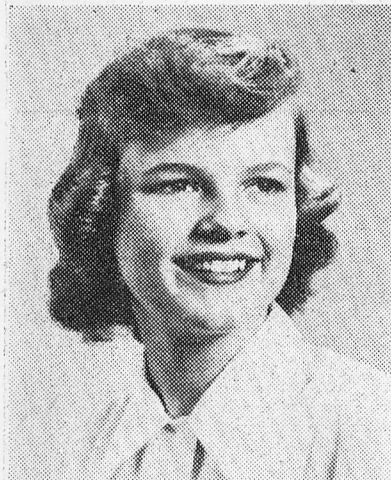
S Honoraries

Each year Southwestern honors many of its students for outstanding achievement and personal popularity. Heading the list are Mr. and Miss Southwestern, the best All-Round girl and boy, and the Most Attractive Girl and Most Handsome Boy. (All but the latter two, Esther Jane Swartzfager and John Lawhorn, were seniors this Spring.) These are all chosen by popular vote, as are the King and Queen of the April Fool Carnival and their Court. Students also vote for the Homecoming Queen and her Maids. The Hall of Fame committee chooses a maximum of five seniors for Southwestern's Hall Of Fame, and ten seniors may be nominated by the Student Council for "Who's Who In American Colleges and Universities." In November of each year, the

Editor of the Sou'wester sponsors a campus Maid of Cotton Contest to choose a girl to represent the college in the National Cotton Council's Contest. Also of interest to the ladies is the Lynx Beauty Review at which five Beauties and eight Favorites are chosen for the annual.



JOHN LAWHORN



Miss Esther Jane Swartzfager has been awarded more honors than any other student in recent years. "Poochie" was sent to Hollywood by the SOU'WESTER to appear on QUEEN FOR A DAY'S "College Queen of America" program. Movie star Jeff Chandler is pictured above with last year's winners from all sections of the country. Pictures of this year's group along with news items from the Mutual Broadcasting System will be released to the press this Fall. The SOU'WESTER will run a series of articles on the Hollywood trip written by Miss Swartzfager.

"POOCHIE" SWARTZFAGER

APRIL FOOL COURT

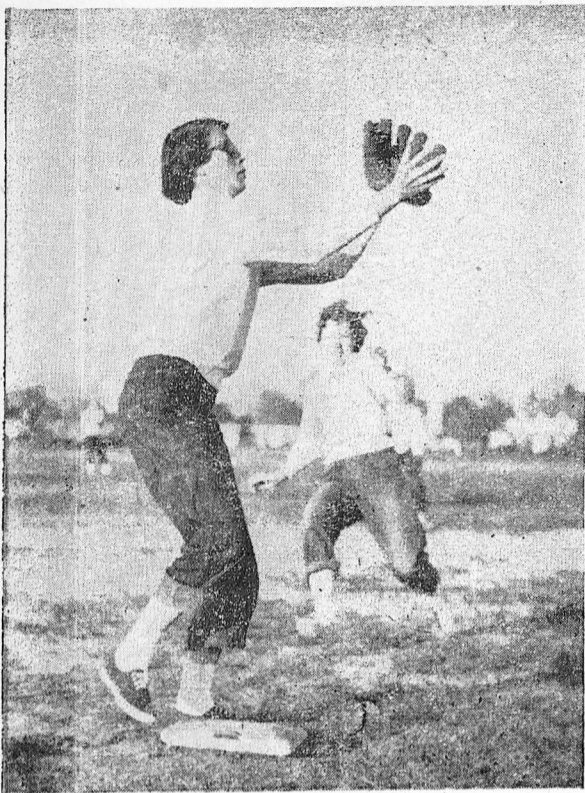


HOMECOMING COURT

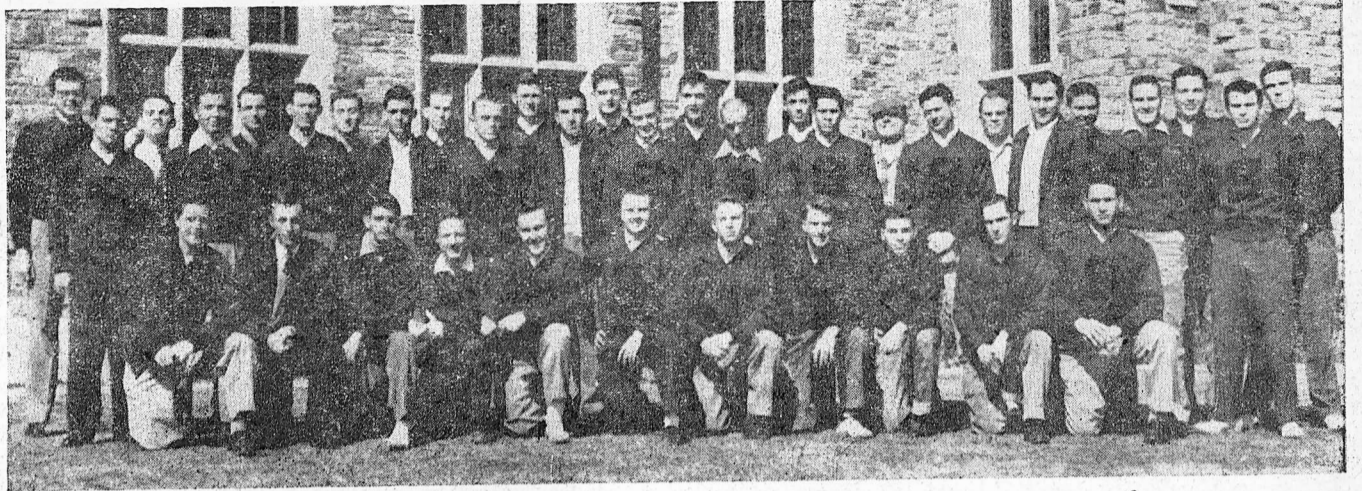


Southwestern is honored each year by visits by many of the nation's outstanding citizens. Among last year's speakers were Senators Estes Kefauver (above) and Albert Gore of Tennessee and Congressman Walter Judd of Minnesota.

MAYS TO COACH FOOTBALL; NEW GYM OPENS



The college has a comprehensive intramural program, including such sports as football, basketball, baseball, tennis, golf, track and volleyball. Four semesters of gym are required for graduation. During the gym periods, professional guidance is available to the student in his chosen sport.



The "S" Club is composed of all men who have earned letters in one of the varsity sports: football, basketball, baseball, tennis, golf and track. They award trophies to the outstanding athletes on the campus, and handle the concessions at the various intercollegiate games.

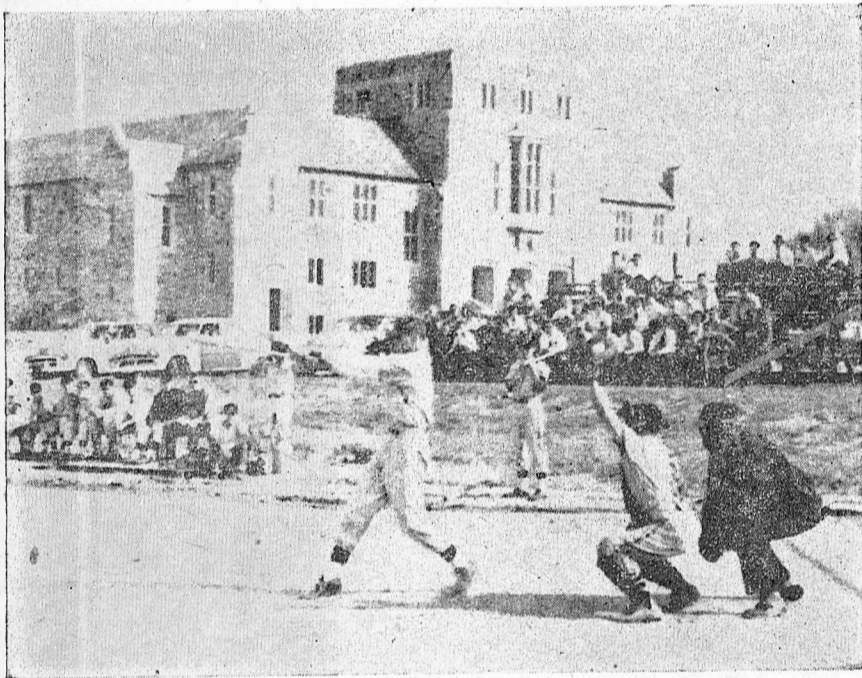
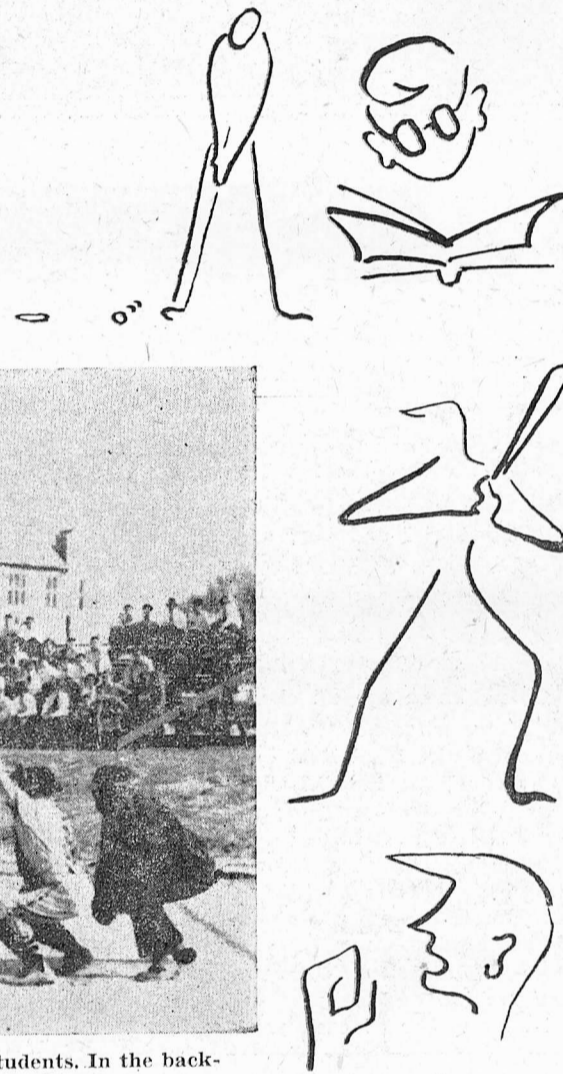
Athletics

The athletic program at Southwestern begins the new season with a new coach and a new gymnasium. Head Coach Glenn Johnson, who has done such creditable work in his multi-role job, turns over the tough football assignment to Rick Mays, a capable former Lynx star. Coach Mays will be assisted by E. A. Wright. Our assistant director of physical education and intramural athletics is William R. Maybry.

available to all students. Miss Ida Williams is the Associate Director of Physical Education for Women, and is assisted by Miss Madelyn Richardson and Mrs. Joye Thompson.

Southwestern at Memphis is committed to a balanced program of physical education and athletics which includes amateur, non-subsidized intercollegiate and intramural sports. In this way Southwestern avoids undue emphasis on the production of a few highly specialized athletes whose excellence in one or two sports reduces the majority of the other students to the role of mere spectators.

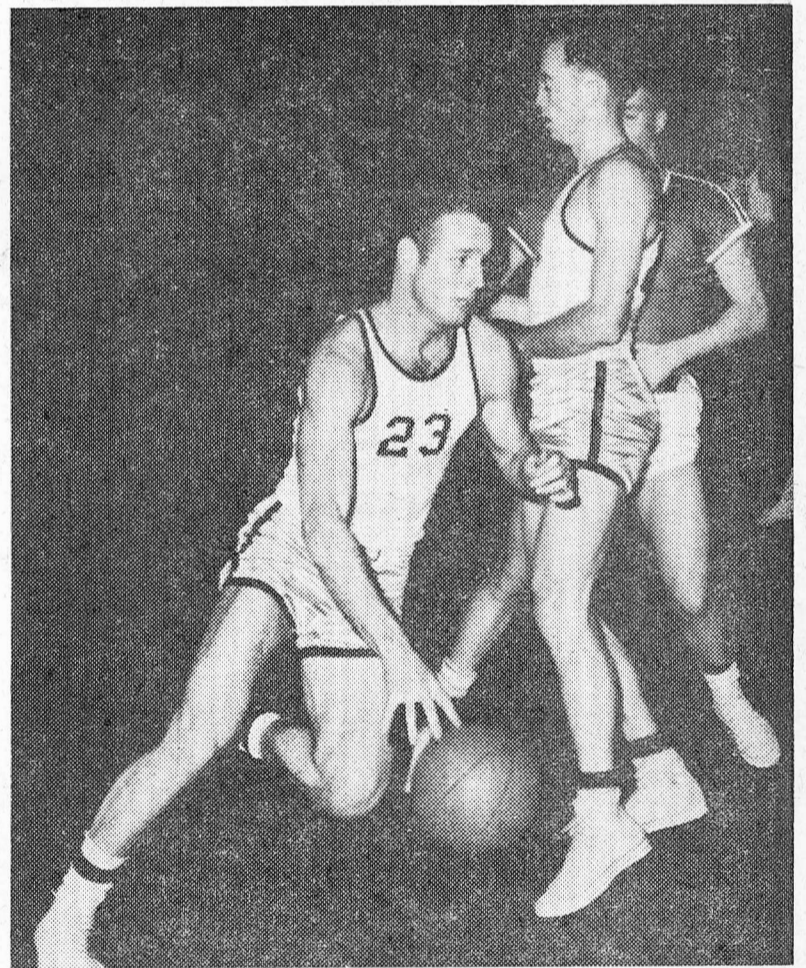
Southwestern is fortunate to have Derrick Barton to coach tennis and Patrick Abbott for golf. Their professional instruction is not limited to the varsity teams, but is



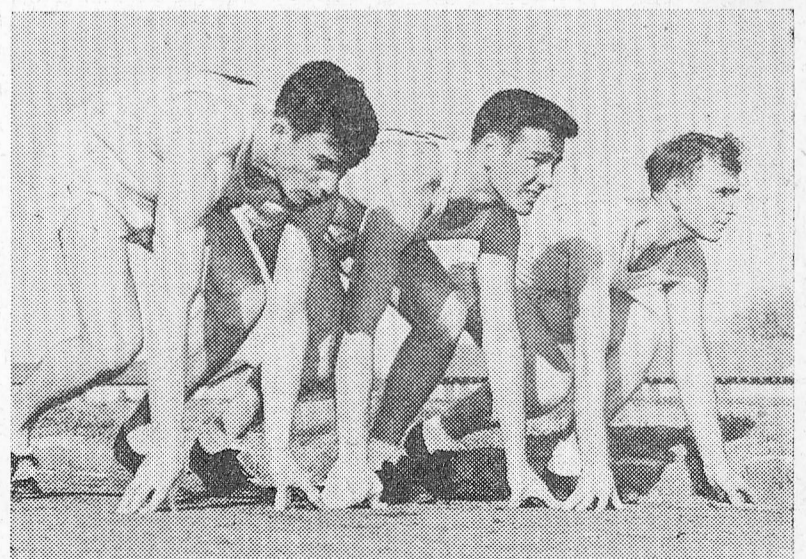
Baseball is rapidly becoming popular with the students. In the background of this picture is the new gymnasium, to be dedicated this fall.



From a won-lost standpoint, the football record last year was disappointing, but Coach Mays promises to field a determined team this fall. The boys have been training for several weeks, and will be ready for the opening kick-off.



The Lynx basketball team had a good season last year and, with most of the starting team returning, prospects for this fall are excellent. The team has met such foes as Ole Miss, Arkansas State, and the University of Chattanooga. The new floor of the Mallory Gymnasium is now ready for the roundballers.



Track and field events always attract many spectators. Southwesterners compete in meets with colleges and universities in the surrounding territory.