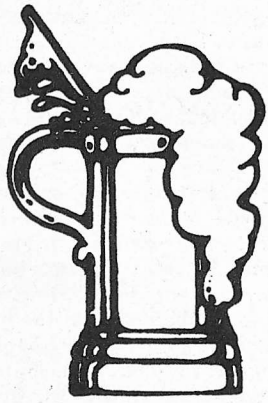


Oktoberfest: prosit!



The Harvest Month, October, is traditionally a time of celebration and abundance. For the last four years, Memphis has generously paid its respects to the tenth month with several festive days of music, crafts, shows, beer, and Pronto pups. The fifth annual OKTOBERFEST will begin on the Mid-America Mall downtown Tuesday, October 10 at 11:00 a.m. It will continue until approximately 1:30 p.m. for the first three days and until 7:00 p.m. on Friday, the last day.

Arts and crafts and food will line the Mall in their respective booths. The biggest attractions of the OKTOBERFEST are the musical groups and solo artists which will be playing each day at the Civic Center Plaza. A schedule

of the times is below. All events on the Mall are free.

Each night at the Orpheum, a different radio station will present a show centered around a particular musical style. Tickets will be \$3.00, and showtime is 7:30. Although the music and shows are scheduled for certain times, the booths will be open most of the day.

OKTOBERFEST t-shirts will once again be sold. These have been great favorites with Southwestern students in the past. They are beige t-shirts with a jovial, bearded, Bavarian gentleman holding a frothy beer mug, and that's an OKTOBERFEST shirt. Bavarian? Yes, well, ours is not to ask why.

—Alice Smith

OKTOBERFEST SCHEDULE Oct. 10 - 13

Tues., Oct. 10

Civic Center Plaza
11 a.m. Harmonikeys
12 p.m. Shylo
1 p.m. Prince Gabe & the Millionaires
Orpheum
7:30 p.m. WHBQ-pop music show

Wed., Oct. 11:

Civic Center Plaza
11 am Grandma Dixie Davis
12 a.m. Dance Syndicate (disco dancing demonstration)
12:30 p.m. Silverhawk
Orpheum
7:30 p.m. KWAM-gospel music show

Thurs., Oct. 12:

Civic Center Plaza
11:30 p.m. Midtown Jazz Mobile
12:30 p.m. Coon Elder
Orpheum
7:30 p.m. WLOK-soul show

Fri., Oct. 13:

Civic Center Plaza
11:15 a.m. Baffling Mr. Baker-magic show
12 p.m. Settlers
1 p.m. Herman Green
2 p.m. No Harry
3 p.m. The Anne, Greg, John Trio
4 p.m. Dixie Bluegrass Boys
5 p.m. Richard Groove Holmes
6 p.m. Edwin Hubbard
Orpheum
7:30 p.m. WMPS-country music show

The Sou'wester

southwestern at memphis

vol. 63, no. 3

memphis, tennessee 38112

October 6, 1978

Southwestern warrants government loans

The Department of Housing and Urban Development has chosen Southwestern to receive a government loan for the renovation of Robb, White, Ellett, and Bellingrath Halls. The loan was sought in July and the school was notified Tuesday, October 3 that it was to receive a loan of \$992,000 (3% interest over forty years). Southwestern is one of 43 colleges in the U.S. and the only college in Tennessee to be given such a loan.

The Board of Trustees will be notified of the loans at a meeting on October 19. Some tentative plans for dates of renovating operations will then be made. The most likely times appear to be the summers of 1979 and 1980. Three months alone would not be enough for the proposed improvements.

Tom Kepple, head of the Office of Administrative Services, believes that the most important operation is dealing with the fire hazard caused by

the electrical system in Robb, White, and Ellett. Other priorities of the renovation list are providing central air and heat for Robb, White, Ellett, and Bellingrath; replacing doors and frames in Robb and White and a few in Ellett; and various other improvements dealing with Ellett bathrooms, ceilings, floors, insulation, fire alarm system, and lighting. Another possibility is a new laundry room facility could be added in Robb Common.

One major area that is of concern to the students living in Robb, White, Ellett, and Bellingrath is the matter of central air and heat. Another major problem is the placement of the large outdoor power unit. Tom Kepple emphasized that he realizes this is a major concern of students because the quad is such a center of activity. He also wants to stress that the plans are preliminary at most right now. The company that will install the unit gave two possible locations: one at the south-east corner of the

quad (the corner where the sidewalks meet) and the other next to the wall which runs along the sidewalk bordering the north of the quad. There are several placement criteria involved: trees are to be avoided, the piping must be convenient to buildings serviced, and "nothing important" is to be obscured. The larger

part of the unit would be underground with perhaps as much as four feet of wall above.

Central air and heat is more efficient than the present separate window units, more control can be exercised by the occupant, and there would not be the heat loss caused by the tape and plastic

around the present units. As many as 118 window units could be eliminated.

Sue Olsen and Mary Palmer are student representatives on the Dormitory Renovation Committee and they would appreciate any suggestions or ideas for these projects.

—Trinka Dykes

Financial aid funds increased; more students receive money

The amount of money available to Southwestern students for scholarships and financial aid has increased substantially since last year, according to Dean Ray Allen, Dean of Admissions and Financial Aid. Dean Allen released this week the statistics on students receiving financial aid.

The Southwestern students currently receiving financial aid from the College's budgeted resources are receiving \$100,171 more this year than was received last year. A total of \$602,205 from the College's resources have been offered and accepted by approximately 50% of the student body. Last year's total was \$502,034. Approximately two-thirds of this additional financial aid as well as the total amount of aid is received by returning students; one-third by incoming students. The average amount received by each student is \$1,198.

This financial aid includes: Honor Scholarship, Southwestern Scholar Awards, Special Achievement Awards, and other forms of merit scholarships, which are either based on financial need or are honorary; grants based on financial need; and, the College's matching funds for the National Direct Student Loans.

When the financial aid from the College's budgeted funds are added to the financial aid made possible by federal and state grants, and private sources, the total amount of such financial aid to Southwestern students is slightly over one and a half million dollars. Such financial aid includes NDSL and Guaranteed Student loans; College Work-Study and campus employment; Basic Educational Opportunity, Supplemental Educational Opportunity, and Tennessee Student Assistance grants; and, other awards such as the National Merit, J. R. Hyde and Rotary

scholarships. The average amount received by a student receiving any form of financial aid at Southwestern for 1978-79 is \$2,953.

The financial aid picture at other colleges seems different. (CPS) U.S. Dept. of Labor officials estimate some 800 private colleges have minimum wage waivers for student employees and work-study employees, allowing them to pay less than \$2.65 per hour. Businesses can also obtain waivers for student employees, who numbered over 142,000 in 1976.

Yet school administrators claim that, if they paid all students minimum wage, they would have to cut back on jobs or hours. The other solution, anathema to most administrators, would be requesting additional state appropriations.

Kent State University financial aid director William Johnson put it this way: "It's a simple matter of economics. No new money is coming in for wage increases. If we were to go to \$2.65 an hour, some students would have to be laid off or get their hours reduced." Kent State currently employs 2,300 of its students.

However, pressure from the KSU Student Worker Association seemed to facilitate finding some new funding. Following the Association's threat to file suit against the university, all students received a 20¢ raise to \$2.50. A month later, the hourly

rate rose to \$2.65, the present minimum.

Johnson warned, though, that the raise would prevent the university from employing as many students in the future.

A little booklet called "Don't Miss Out: The Ambitious Student's Guide To Scholarships And Loans" is out with some depressing news about how many even students with financial aid are expected to kick in toward their education.

As reported in *The Wall Street Journal*, a family of three with one kid in college, total income of \$17,500, and total assets of \$5,500 will probably have to contribute about \$2,235 per year toward college. Total average cost at a four year private school this year is \$5,110. At a four year public school, average cost is \$4,375. That means, according to the booklet, that most private schools would not give financial aid of over \$2,875 to the family of three. Most public schools would only give a maximum of \$2,140 per year.

The same family with assets of \$21,000 could expect to have a difficult time getting any kind of financial aid for either public or private school.

The booklet, available from Octameron Associates, P.O.B. 3437, Alexandria, Va., 22302 for \$1.50, points out that its figures have nothing to do with any merit scholarships that might be available.

Committee members, faculty prepare for board meeting

Student members of Board of Trustees Committees were recently announced by SGA president Chris King.

Student members of the Board for 1978-79 are Dan Cogswell, Carolyn Crenshaw, and Ralph Jones. Cogswell will be serving on the Faculty and Educational Program Committee, Crenshaw on the Students and Campus Life Committee, and Jones on the Committee for Development and Institutional Advancement.

Student members of other committees, as appointed by the SGA, are Bob Burnside, Finance; Gary Minor, Buildings and Grounds; Alice Smith, Honorary

Degrees; and Edward Wheatley, Admissions and Financial Aid.

As president of the SGA, King is automatically a member of the Students and Campus Life Committee.

The faculty is also preparing for the October 19-20 meeting by finalizing an official statement of its position on tenure, which will be presented during the meeting. The original report, brought before the faculty last week by the Ad Hoc Committee on Educational and Faculty Development for the '80's, was returned to the committee for revision. The faculty will vote on the revised statement early next week.

Election results announced

Elections over the past few weeks have yielded the following results:

SGA:

Bellingrath-Neely	Anne McKee
Glassel	Brian Cassin
New Dorm	Becky Butler
Robb-White-Ellet	Marshall Howard
Town Students	Bill Hardwick, Marci Madlinger
Trezevant	Anne Shugerman
University-Evergreen-Fraternity Houses	Mac McDaniel
Voorhies	Linda Green

Publications Board At-Large David Granoff
Senior Elections Board Ellen Stammer

Nominations for Homecoming Queen will be made Thursday, October 12.

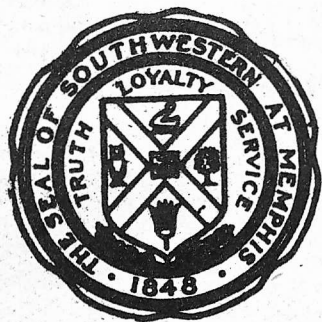
Sou'wester

Box 724

2000 N. Parkway

Memphis, TN 38112

THE BURROW LIBRARY
Southwestern at Memphis
Memphis, Tennessee 38112



THE SOU'WESTER

EDITOR Edward Wheatley
 LAYOUT Christie Ray, Mark Hurley
 SPORTS Taylor Philips
 PHOTOGRAPHY David Granoff, John Peebles,
 Deck Reeks
 CONTRIBUTORS Tony Blatnik, Rick Cartwright
 Boyd Chitwood, Dave Dunavant, Trinka Dykes, Sue
 Olsen, Cathy Roan, Alice J. Smith, Erin Sullivan

News in brief

If you think you know nothing about *Dilemma*, read this. If you think you know everything about *Dilemma*, please read this! *Dilemma* is a weekend of intellectual activity centered around a theme and several guests who are knowledgeable about that theme. For example, last year's theme was "The 60's: Impact of an Era" and one of the featured guests was former Sen. Eugene McCarthy. The year before, Sam Ervin enlightened us on "The South: Heritage and Promise." (Our only restriction on theme this year is that its title not have a colon in it.)

The program is run entirely by Southwestern students and funded by private contributors. This means work. The co-chairpersons this year are Cathy Roan and Greg Yeatman, who will be glad to answer any questions

and relay any ideas on to the chairpersons of specific committees. Tom Parrish is in charge of Finance. (Spelled out, that's \$\$\$\$\$\$.) Anyone having 1) the desire to sell themselves, or 2) with an honest face, please consider helping Tom. People of superior intellect do not come to Memphis for peanuts. Trinka Dykes heads the newly-formed Format committee, which should excite some of you old-timers. We want to think of ways to present guests other than straight lecture style. Some ideas have been debates, panel discussions, and more audio-visual presentations. We are willing to break ties with traditional format. Cathy Caldwell is Operations manager. This includes getting guests to and from Southwestern, seeing that they're taken care of while they're here, and making them

glad they had the chance to participate in our program. Students will be needed to host these people, too. The Program director, Melissa Kent, will begin writing thousands of prominent persons as soon as a topic is selected. Hopefully, six or seven will write back. Students are desperately needed to think of possible guests to write. Sally Barge will see to it that our *Dilemma* is publicized to the hilt, to keep those in the Memphis community in touch with what we zany college kids are doing these days. Staging, or the proper placement of chairs, microphones, and glasses of water, is under the supervision of Phil Mischke and Taylor Phillips, who especially request underclassmen trainees.

Two open forums have been held so far in order to allow those with a general interest the chance to voice topic suggestions. By no means have we selected a theme, however. Please give your ideas to Cathy or Greg, any committee heads, or Box 723 if a third forum is not forthcoming. Support *Dilemma* this year: help us make it fresh.

—Cathy Roan

International Feast

The first International Feast is scheduled for Sunday, October 15 at 6:00 p.m. in the Lair. This potluck dinner is a great way of getting together with a friend and trying a new and exotic recipe or simply sharing a favorite dish with others—it can be an entree, soup, dessert, salad, side dish, drink, whatever. In the past, there have been crowds of 50 plus people who brought to the Feast a lot of variety and food. It's not too late to start thinking of a recipe and people to help cook. If more than one are responsible for a dish, think quantity.

—Dave Dunavant

Biblical symposium addresses questions

Is the Bible relevant in today's society? Can we use the Bible as a tool for instruction regarding our faith and practice? Is the New Testament a 2,000-year-old outdated document that is bound only to the first century culture? How can one explain the seeming errors in the Bible? These questions and many others are going to be addressed at a Biblical Symposium at Southwestern on Oct. 13-15.

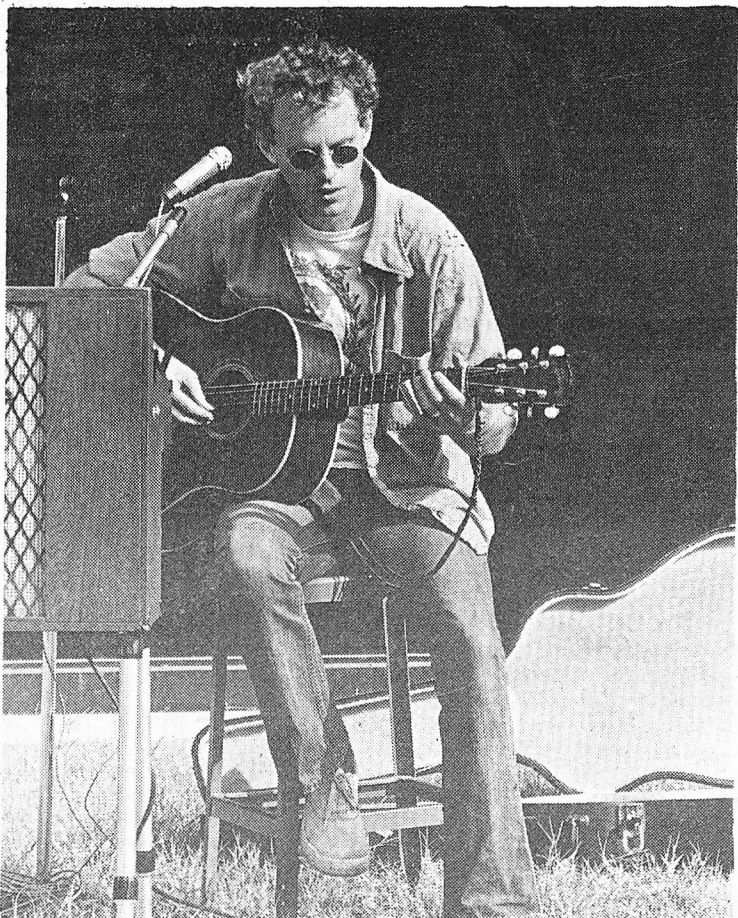
In today's academic circles of Religious studies, the Bible has become a major area of debate with many differing opinions among the world's great theologians and Biblical scholars. Many theories have been proposed to account for the compilation of the Biblical material, and words such as "inspiration" and "authority" have been subjected to much debate in regarding the

material. In keeping with Southwestern's tradition of academic excellence, the Southwestern Fellowship of Inter-Varsity is sponsoring the symposium, which is entitled "Biblical Criticism: The Academic Challenge." The main speaker for this event will be Dr. William Lane, who is currently teaching in the Department of Philosophy and Religion at the University of Western Kentucky. Lane has written many books and articles, including *The New Testament Speaks* and the *New International Commentary, The Gospel of Mark*, and he received his doctorate in Theology from Harvard. He will address the issues confronting the Bible and will view the current Biblical critical methods that are used to examine the Bible. Other speakers from Memphis will address

similar issues during the weekend. Often in the academic circles of Religious studies, the Bible is viewed as a manuscript that is limited to the first century culture and therefore there are many limitations on its relevance to today's society. Biblical inspiration and authority are often foreign to current descriptions of the Bible, and the conservative evangelical view of Scripture is frequently ridiculed as unscholarly and is seen as a viewpoint that requires one to dismiss his or her academic reasoning. The purpose of the symposium is to expose a conservative viewpoint that is both scholarly and academically sound and which supports the inspiration and authority of the Bible. The Southwestern Fellowship hopes that by presenting this academic

opportunity the community may be exposed to scholarly evangelicalism and one of the country's top scholars. In all areas of scholarship it is necessary to view all the different viewpoints on a topic, and the Southwestern Fellowship feels that the symposium will add to the academic atmosphere at the college and that the students will benefit.

The symposium will begin at 7:00 p.m., Friday, on Oct. 13 and is free to all the Southwestern community. They will be joined by other students and interested men and women from the South. Dr. Lane will provide introductory material in his lectures to explain the topics; so it is not necessary to be a major in Religion to benefit from this weekend. More information will be provided later.



SID SELVIDGE

SCA makes October plans

The Student Center Assembly had a meeting Wednesday night and discussed plans for October.

Nicos Lyras played in the Pub last night and "Delta Moonshine" will be playing tonight (October 6, 1978) in the pub at 9:00 p.m.

This Saturday at 9:00 p.m. Cotton Exchange, a blue-grass band, will be performing in the Pub. On Sunday, Robb Common will be sponsoring Softball and Gin in the afternoon at 2:30 p.m. Coming up:

Thursday, Oct. 12 Sid Selvidge in the Pub, 9:00 p.m.

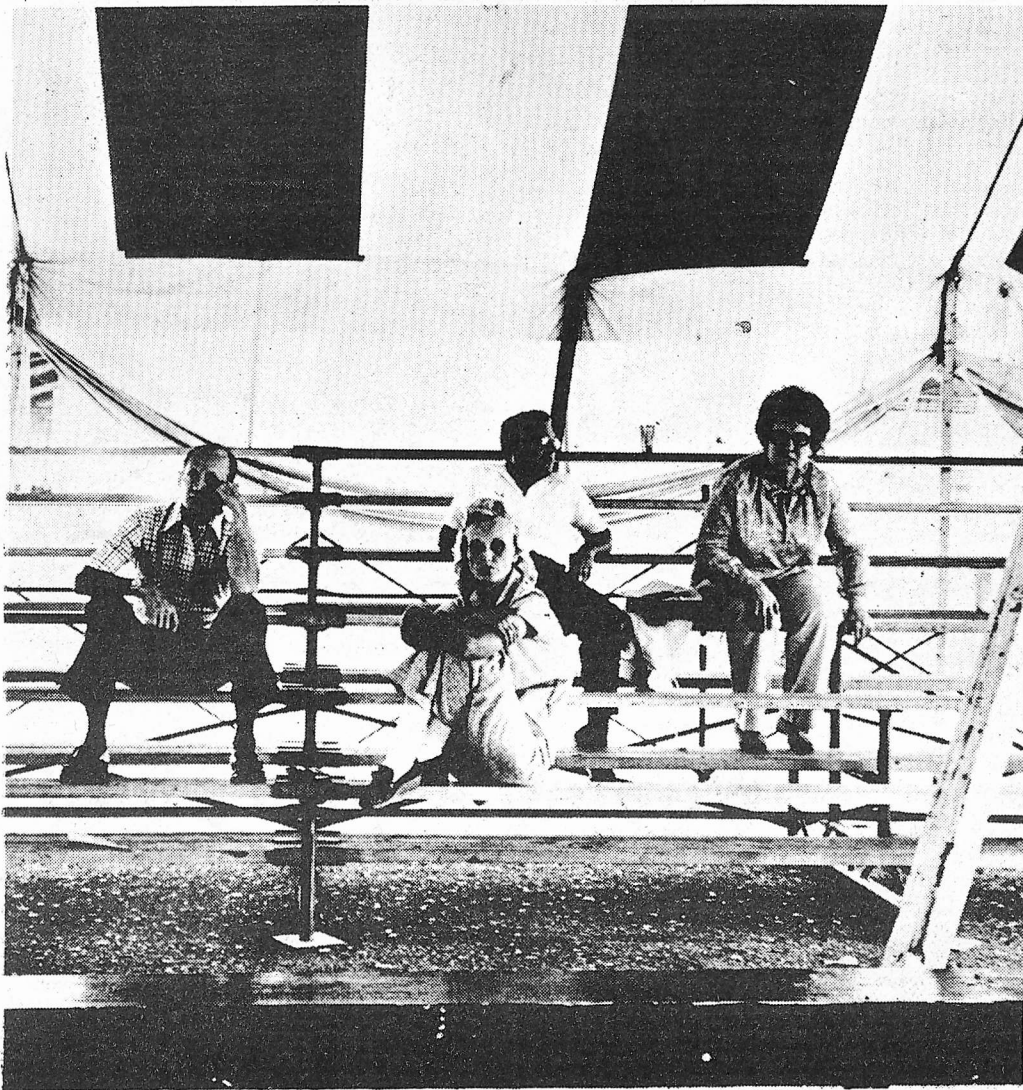
Saturday, Oct. 14 "Eclipse" Soul And Dance Pub, 9:00 p.m.

Sunday, Oct. 15 Sea Monkey Bank; Pub at 8:30 p.m.

The Student Center is also trying to persuade John Henry Nelson to play in the amphitheatre on Friday, October 20, as a prelude to Homecoming with Larry Raspberry and the Highsteppers and Exotic Movement at the Orpheum.

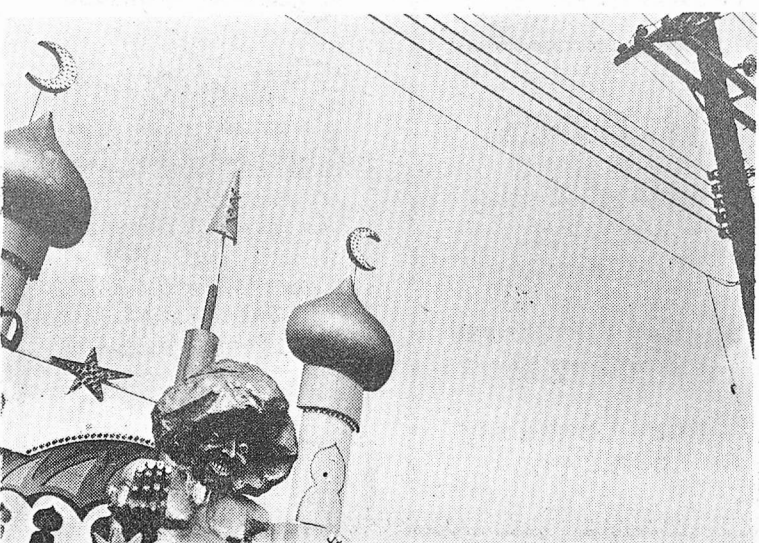
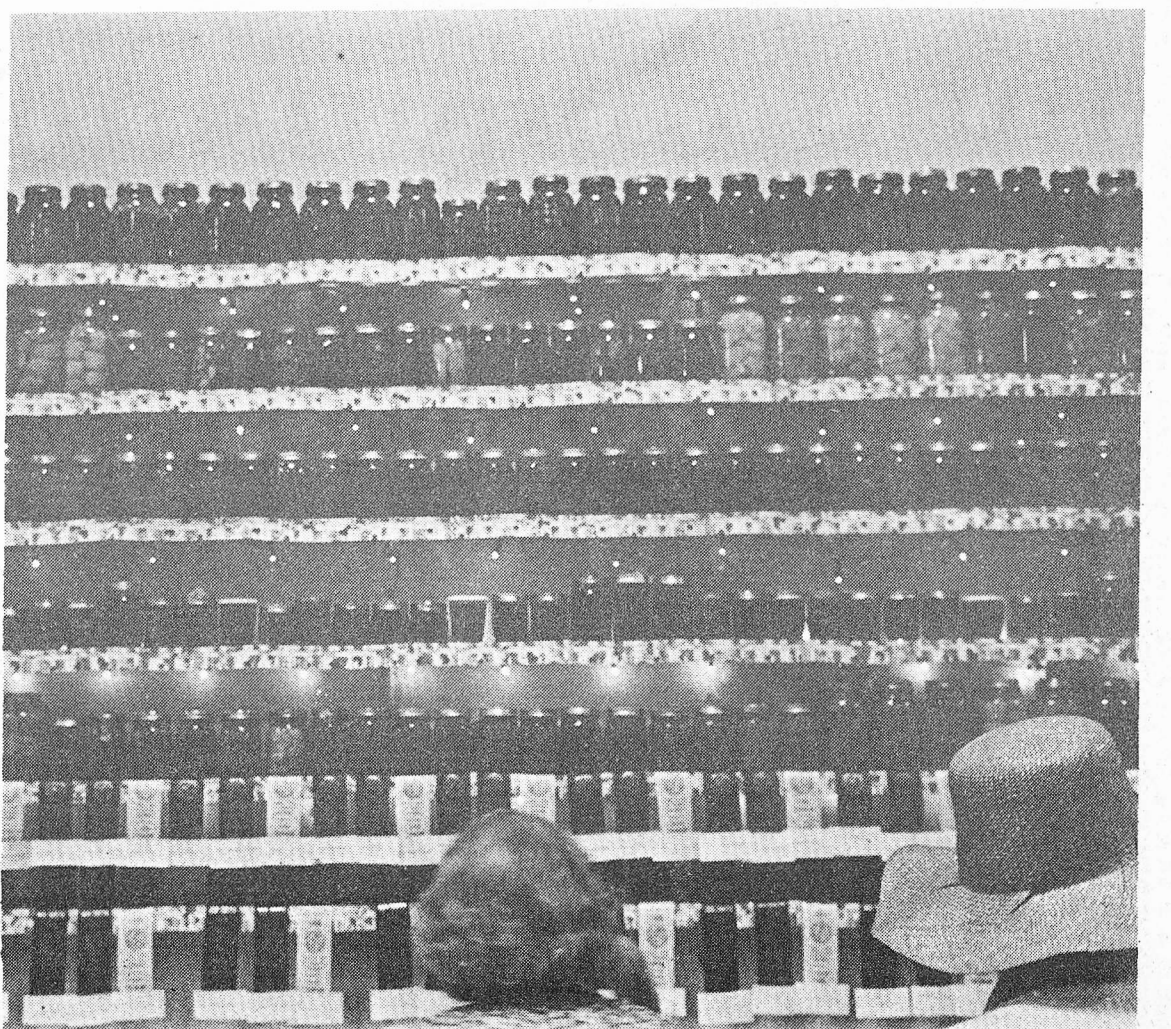
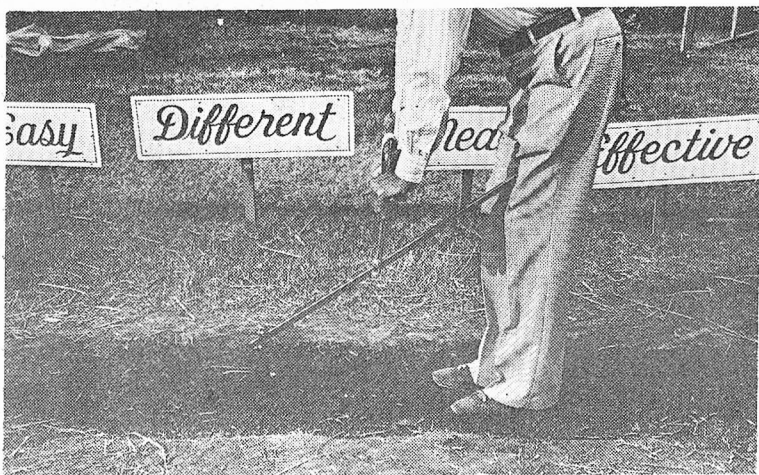
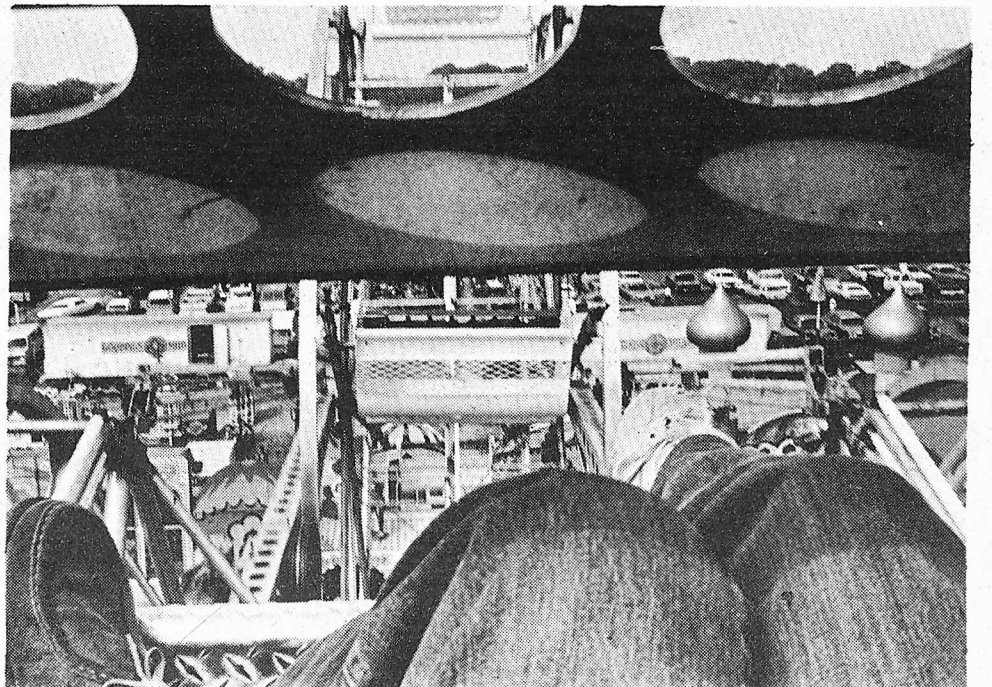
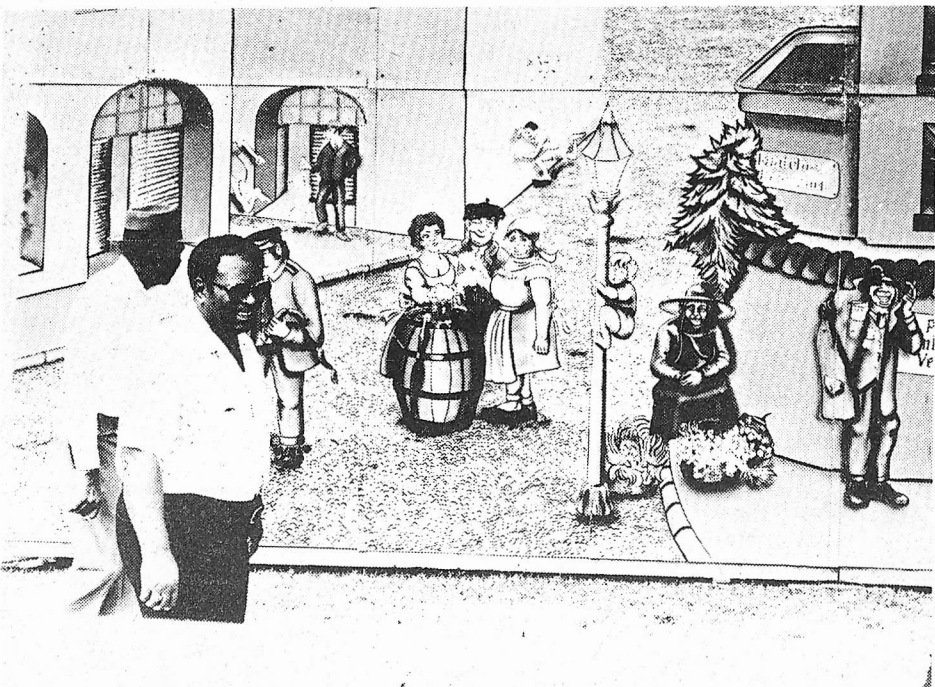


Secrets of Wilds' "Legends" revealed at last.



FEAR AND LOATHING

at the Mid-South Fair
photo essay by Deck Reeks



SAM teams post victories in football, soccer runaways

Football

The football team continued its winning ways Saturday with a 30-14 shellacking of Coe College. This time SAM, characteristically a "second-half" team, scored 28 points in the first half. The hammering runs of Ralph McIntyre were the forces responsible for 160 yards and four touchdowns.

Craig Solomon's arm found Kent Pylant, Tom Mullady and McIntyre in crucial situations. The defense did a superb job in the first half bottling Coe. In the second half the Kohawks fought back for respectability, 200 yards and 14 points all in the third period. The defense came back in

the final period, gaining a safety late in the quarter and pulling in six interceptions.

Southwestern's attack stalled later in the game. Double teaming on the ball carriers and the loss of Jerry Hampton and Tom Mullady were contributing factors and Coach Thornton took the opportunity provided by the lead to give some playing time.

—Rick Cartwright

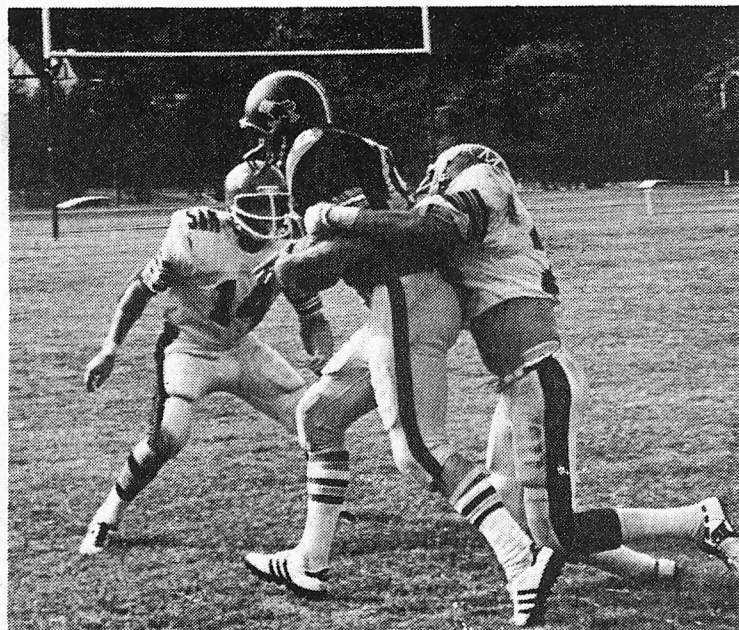
Soccer

The Soccer Team defeated the University of Tennessee Medical Unit last Sunday 6-2. SAM overshoot the doctoral candidates 40-8. David Bartholomew headed in a Chris Barker corner kick to

break the ice. Jimmy Onoubon drove a low ball into the corner of the net in the first half and intercepted a defender's pass to his own goalkeeper in the second. Greg Volgas, John Trussel and Taylor Phillips each popped in a long shot.

Sunday the team travels to Missouri, Southern University to battle a top NAIA power. This squad, which is composed mostly of players from the strong soccer area in and around St. Louis, is currently 4-2, having scored 17 goals against their opponents' 7. Their single disadvantage against Southwestern might be that the Monday afternoon match will have been their third game in four days.

—Erin Sullivan



SATURDAY the football team increased its chances for post-season action with a big win over Coe. Mike Shofner (R) and Joe Hyrka bring down a Kohawk ball carrier.— photo by Boyd Chitwood.



SUNDAY The Soccer team practiced on U.T. Med. Jimmy Onoubon launches a shot as Rodney Nash (L) and Chris Barker look on.—photo by Boyd Chitwood.

Women's volleyball on winning streak

Last weekend the women's volleyball team went out to prove

Shaping up Athletics Gym shorts

The Southwestern Athletic Commission sponsored our coffee during break Thursday. We hope it gave everyone a chance to chat with Coach Thornton and his staff and chew on doughnuts, or vice versa.

There is still a sign-up list for those interested in taking a fencing class second term. Please sign in front of the gym office soon.

The New Dorm Demons will battle the alum flagball team Sunday at 3:00. The old grey mares may not be what they used to be, but we'll see if experience has the upper hand.

If anyone has any spare onion bagels...please forward to the varsity volleyball team. They threw all theirs away in a continuing effort to upgrade varsity sports.

that this is not another "rebuilding" year. Under coach Bridges' leadership the team won seven out of twelve games at the Lambuth Invitational in Jackson. The "lady" Lynxes won matches against Trevecca and Freed-Hardeman, and split matches with Sewanee, CBC, and Vanderbilt. Southwestern was the only team at the tournament to win a game from Vandy, who went on to finish first. Captains Ellen Geiger and Marlee, "the ape", Mitchell had the best percentages on the team with their coin tosscalling - they were four for six for the day (when it comes to money Geiger always knows which way is up). The team will be back on the road today for the UT Martin Tournament. The first of two home matches will be October 11 against Arkansas State and Lambuth.

—Sue Olsen

Frats early favorites in flagball action

Though flagball activity is off to a slow start in some circles, interest and participation are on the upswing. Overall team results are not yet compiled, but some trends are developing.

The fraternity teams seem to be coming out as early favorites because of their organization and experience. The dorms are learning quickly, though, and will hand some defeats to the Greeks

before the season's end.

Only recently, the SAE's posted a 3 1/3 to 3 victory over the Robb Raiders. It seems the frat versus dorm margins are getting smaller already.

The girl's league has suffered many early season forfeits, though the four New Dorm teams are active, with New Dorm teams II and III even outfitting themselves with uniform shirts.

—Boyd Chitwood

Bluegrass Cotton Exchange

In the Pub Saturday October 6 9 - 1



OMEGA SPORTING GOODS
"Specializing in Soccer"
5% Discount
With This Ad
TELEPHONE: 372-1463
1672 SYCAMORE VIEW
NEW MACON PLAZA
MEMPHIS, TN 38134

The Pub



Stroh's 10 oz. .40
Dark 10 oz. .40
Lite 10 oz. .40
Hienekin 12 oz. \$1.00

HOURS:

Monday - Friday
4:00 - 5:30
Free Pretzels
Sunday - Thursday
8:00 - 12:00
Friday - Saturday
9:00 - 1:00

Prepare For: **Our 40th Year**



TEST PREPARATION SPECIALISTS SINCE 1938

Stanley H. KAPLAN

Educational Center
Call Days Evenings & Weekends

Prepare Now For Fall MCAT, DAT, and LSAT
2600 Poplar, Suite 510
458-6401

For Information About Other Centers In Major US Cities & Abroad Outside NY State
CALL TOLL FREE: 800-223-1782