

# The Sou'wester

southwestern at memphis

vol. 63, no. 22

memphis, tennessee 38112

May 11, 1979

## CLC reviews Greek system

The Community Life Committee is responsible for reviewing campus life at Southwestern in order to detect problem areas and to propose solutions. After spending the greater part of second term reviewing results of the triennial evaluation of voluntary groups on campus, CLC (which was, in effect, composed this past year of 20 representatives from faculty, students, and administration) chose to look more closely at the Greek system and to hopefully suggest improvements for the system.

Discussion initially centered around a suggestion by Dr. Gilliom that Greek groups:

- (1) Assure third-day party invitations to *everyone* going through rush, and
- (2) Assure bids to all who go

## ARA selected as new food service

Two weeks ago, the Food Committee selected ARA Food Service for the refectory next year. The student committee members active in the selection were Sandy Deeser, Mike Frick, Marsh Acker, Marlee Mitchell, Joe Evangelisti, Diana Scarborough, and chairman Larry Glasscock.

Six managers, representing three different food services were interviewed. ARA was selected for its cleanliness and organizational consideration. ARA is currently serving many colleges and high schools all over the nation, and is one of the nation's largest food services. Presently at McCallie in Chattanooga, Timothy E. Mallon will manage the new service in the refectory.

There is no significant difference in the price of ARA and Epicure. The rise in board is due to inflation. The present seven and five day meal plans will remain the same, but there will be a few organizational charges.

## Distrust remains among faculty

It is difficult, if not impossible, to make sweeping generalizations about such a diverse group as the Southwestern faculty. However, after interviews with several faculty members, it is clear that there are significant obstacles that must be overcome before the faculty and President Daughdrill can re-establish a harmonious and effective working relationship.

Despite campus-wide talk of judgement, there is still a distrust appears to remain among faculty members. "In my judgement there is still a considerable attitude of distrust between the faculty and the President, and that attitude will not be dissipated by an absence of contact over the summer," said Prof. Douglas Hatfield.

"The faculty is still pretty tense, suspicious even," noted Prof. Bernice White. "There are some crucial communication issues at stake that need to be resolved."

Lately, the most effective communication has centered around an unofficial group consisting of two faculty members, President Daughdrill and two

through rush.

Dr. Gilliom was apparently most concerned about sorority rush and girls who "fall through," which many feel is a "devastating" experience at a school as small as Southwestern. Panhellenic has since responded positively to point (one), and point (two) has been argued out of existence.

Toward the end of term II another proposal was made from within the CLC that a sophomore rush be considered as a means of letting freshmen adjust to college life, particularly academics, before getting settled in Greek groups. In response to this proposal, CLC joined with representatives from independents, IFC, Panhellenic council, and each sorority and fraternity to discuss the sophomore

rush scheme. Emphasized in these latest gatherings was the need to not take action at this late date in the school year, but to raise and record ideas so that succeeding committees may further evaluate regulatory policies placed on all voluntary organizations on campus.

At the meetings held on Tuesday, May 1, and Thursday, May 3, IFC president Mike Frick suggested to the committee the future establishment of a nine member rush review committee composed of CLC president, 4 CLC members, 2 Pan reps and 2 IFC reps. Pan president Jill Johnson summarized majority negative sorority reaction to sophomore rush, citing economic concerns of all Greek groups as well as negative effects on admissions if freshmen are not allowed the opportunity to participate in an organized, traditional system. Two major objections underlying Pan's presentation were:

- (1) Freshmen resentment of being considered incapable of "mature" decisions during rush.

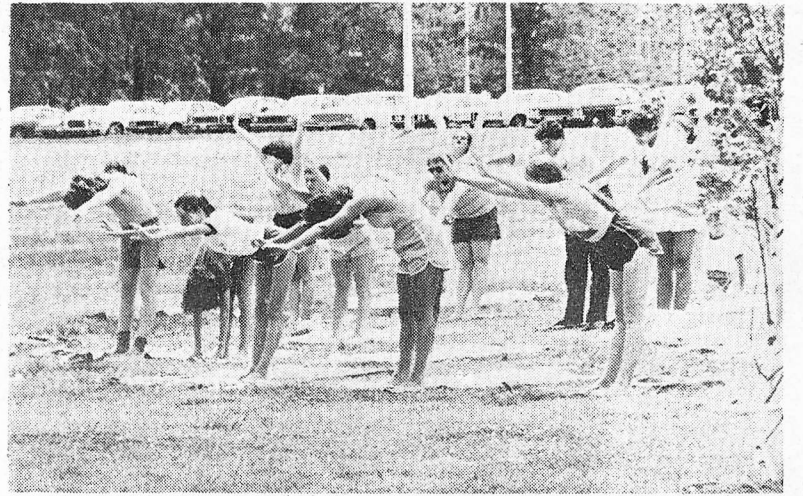
- (2) Fact that this line of argument circumvents the original Gilliom proposal.

Further objections to the proposal that arose during the May 3 meeting were: Rush serves as an invaluable way for freshmen, particularly commuters, to meet the greatest number of people on campus; the fact that it is impossible and in fact hinders maturity to try and protect every single person who attempts to enter an exclusive system - leadership and organizational abilities motivated by membership in Greek groups that encourage campus involvement.

On Tuesday, May 8, the CLC again met with the understanding Continued on page 3

## Maria Stuart set for Renaissance

In the spotlight for the '79 Renaissance Festival is the major dramatic production of Friedrich Schiller's *Maria Stuart*. Director



Sun worshipping is one of many third term activities that Southwestern students enjoy. (photo by John Peeples)

## Music to highlight Memphis in May

Memphis in May, the annual festival of arts and entertainment, is underway once again, providing a wide range of events and activities in an attempt to give a sense of community to the city.

The festival, which honors a different country each year, salutes the Federal Republic of Germany. The German elements of the celebration include German film festivals, art shows, plays, and jazz performers.

One of the high points of the month, the Beale Street Music Festival, takes place at Handy Park on Beale Street tomorrow. Instead of having an admission charge as in the past, this year's event has been underwritten by Holiday Inns so that admission is free.

Three stages will be set up in the areas each featuring a different type of music.

On the jazz stage will be Phineas Newborn, Jr., George

Coleman, Honeymoon Garner, and Albert Mangelsdorf, a German jazz trombonist, along with several other groups.

Featured on the blues stage will be Furry Lewis, Book Laury, Sid Selvidge, Charlene, Mase Vinson, others. Prince Gabe will emc

Rufus Thomas, emceeing rock, soul, and gospel stage host the Full Gospel Tabernacle Ensemble from Al Green's cl Harmonica Frank Floyd, an Dickinson.

All shows run from 1 p.m. 8 p.m., when Albert King will the day to a close on the rock and gospel stage.

The festival will be moved to Sunday if the weather is bad tomorrow, and if rain continues Sunday, it will be moved into the Orpheum on Main Street.

See calendar on page 2 for a list of next week's activities.

members of the Board of Trustees.

"It is unfortunate that this is the only channel that seems to have been working," said Prof. James Jobes. "It ought not to be necessary to operate in that special way. However, it is better than nothing, and in fact has been very helpful for some important particular issues," he added.

The informal working group originated the recent compromise on the composition of the EVP-Dean Search Committee. However, the faculty shares deeper concerns that go beyond these issues.

"There has been a tendency to emphasize the tenure issue, and this has distracted from the more serious fact that there are basic philosophical differences as to how the college should be governed," said Prof. Jack Farris.

Creating a committee to work on communication, and making Board members available to the campus are actions that the faculty members interviewed pointed to as evidence that perhaps the Board is aware of these differences.

"The first step is to recognize that there is a problem. I am

encouraged that the Board seems further along toward recognizing that there are general problems above and beyond any particular issue," said Prof. Jobes.

"Some of the President's action of late are encouraging," he continued. "But I do not feel assured that basic problems about governance, communication, and confidence are resolved."

"Some good steps have been taken which may create an institutional structure which we can live with, but I see no indication whatever that the President has changed his philosophy of governance," said Prof. Farris.

The faculty members interviewed noted several problems that need to be worked out in resolving governance differences.

"The President has tended not to recognize very fully that the trouble to start with was not just a particular issue or issues," said Prof. Jobes. "It is a matter of style and procedure over and above specific issues."

"Rightly or wrongly, we often get the impression that by the time Continued on page 2

Ray Hill is using the Stephen Spender English translation of this German play for his show. It is hoped that members of the Memphis community will be on hand for the performances, as it is the Communication Arts Department's largest production for spring term, and is also in keeping with the German theme of Memphis in May.

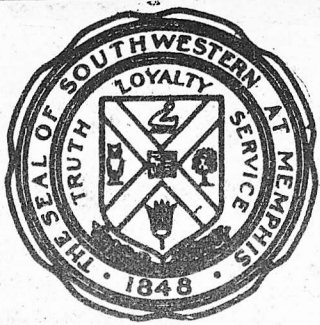
Director Hill believes in compressing his rehearsal schedule because it focuses cast attention more specifically on a play; therefore, *Maria Stuart* will have been in rehearsal only four weeks when the production opens on Tuesday, May 15. The long hours (often as many as six hours a day) are not wearing down his actors, though. On the contrary, rehearsal performances are full of fresh energy even in this late stage of the game.

Another tactic employed by Hill is that of double-casting the female roles. This serves two purposes as Hill sees it. First it allows more women to participate though there are only three spots for actresses in the script. Second, it provides an exercise in acting. Performers interpret roles differently. Since no one plays opposite the same cast all the time, variations in individual portrayals occur, nuances of character emerge, and a fresh vitality surrounds each performance.

The story of Elizabeth I and Mary Stuart revolves around the question of the throne of England and whose it is by right. Hill's belief that the throne is such a key symbol has led him to have it remain on stage for the duration of the play. Other scenes will be set around it. The lighting for *Maria Stuart* is by Kevin Jagoe; costumes by Margaret Fain. Leslie Reddich is assistant to the Director.

Sharing the female roles are Amy Shouse and Carol Cole - Elizabeth; Tallynn Hanissian and Susan Wood - Mary Stuart; Kacie Strickland and Jamie Curts - Hanna Kennedy. Among the male cast members are two new talents on the Southwestern Players scene: Haynes Knight as Burleigh and Don Linke as Aubespine, both of whom show promise by what they've shown so far. Other men's roles are played by Steve Harrington as the Earl of Leicester, Bobby Burkes as Sir Edward Mortimer, Preston Johnson as Sir Amias Paulet, Eric Bergstrom as Talbot, Phil Mahla as Sir Andrew Melvil, and Bobby Green as Sir William Davison.

Campus preview performances will be Tuesday and Wednesday nights, May 15 and 16, at 8:00 p.m., and Sunday, May 20, at 2:00 p.m. Tickets are available at the Halliburton Tower office.



### THE SOU'WESTER

The Sou'wester is a weekly student publication at Southwestern At Memphis. All non-bylined editorials reflect the opinion of the staff. Letters to the editor are welcome, but all letters must be signed.

- EDITORS ..... Mark Hurley, Christe Ray
- LAYOUT ..... Carol Chu, Eleanor Evins, Kim Rodrigue
- TYPISTS ..... Cynthia Brown, Dawne Robertson
- SPORTS COLUMNIST ..... Boyd Chitwood
- PHOTOGRAPHY ..... Boyd Chitwood, John Peoples
- CONTRIBUTORS ..... Marlee Mitchell, Lis Nielson, Edward Wheatley, Jim Whitlock, David Eades, Sarah Windes, Sue Deeser, Paul Mackin, Joe Krakoviak, and Coach Freeman Marr

# Box 724.....

Dear Fellow Students,  
Faults lie in every system. Here at Southwestern we are lucky to have been given so much say in the governing of our systems. What I

don't understand is why we don't use our say and our institutions to work for our benefit and eliminate those faults.

"Tone of voice" my mother

always used to emphasize. Well behind that tone of voice is an attitude which is also important.

The Community Life Committee is an institution which has been examining the faults of a "system" important to our community - the Greek system. This is the tri-annual check-up time, and we have a chance at correcting many of the problems. But this obviously isn't the general attitude.

We sit around battering down others' ideas and feel triumphant without proposing any positive alternatives all the while denying that problems even exist. And we wonder why we don't have "campus unity"!

I'd like to see some ideas shaped by everyone's opinions emerge from us as a whole. We need to put trust in our committees as well as some input and take a positive attitude towards change. But most of all we need to retain a respect for each other and reflect that in a calm tone of voice.

Sincerely,  
Dabney Gillespie

Dear Ed,

Some people have complained recently about the lack of communication between the students and the administration. These people seem to feel the administration is nebulous and fog-enshrouded. Well, I am happy to report that there is one bright spot among all of this obscurity. I am, of course, referring to Tom Kepple.

Last week I wrote a letter about the brilliant lighting of Halliburton tower. In my letter I stated that the lights cost \$11,000 as reported on Channel 13's 10 p.m. report. I can produce witnesses who will swear that they, too, heard the figure \$11,000. This figure is, however, slightly incorrect. Upon reading my letter in the *Sou'wester*, Mr. Kepple, or Tom as I like to think of him, sent me a handwritten note that he personally authored. This note cast some new light on the situation. Tom explained that the correct figure is \$1100, not \$11,000.

Nevermind.

Apologetically,  
Robert Bush

P.S. Do you think I could get an \$1100 scholarship? So it's not \$11,000; I'll get by.

## Three businessmen appointed to Board

Three business from Memphis have been appointed to three-year terms on the Southwestern At Memphis Board of Trustees.

They are William B. Rudner, president of DeSoto Capital Copr. of Olive Branch, Miss.; Norfleet R. Turner, chairman of Data Communications Corp. of Memphis; and John C. Whitsitt, vice chairman of First Tennessee National Bank of Memphis and vice chairman and board member of First Tennessee National Corp.

They will assume seats on the college's 36-member board of trustees in the fall. The three were

electd by the board, which names 18 of the college's trustees. The remaining 18 are appointed by the Presbyterian Church, U.S. with which Southwestern is affiliated.

Rudner has been a member of the board's Investment Committee since 1967. He formerly was associated with radio station WMPS and with Merrill Lynch, Pierce, Fenner and Smith. He retired in 1967 as executive vice president of Union Planters National Bank.

He has served on the board of trustees of Temple Israel, is president of B'Nai B'Rith Home and Hospital, is a trustee of Memphis Development Foundation, Memphis Plough Community Foundation and the Crisis Center, and is listed in "Who's Who in America."

Turner has been chairman of Data Communication Corp. since 1969, when he resigned as senior vice president of First National Bank of Memphis. He had worked with the bank since 1951 and currently serves on the board of First Tennessee Bank. He is past chairman of the Memphis Area Chapter of the American Red Cross, a director of the Metropolitan Opera Association and a board member of various other organizations.

Whitsitt is an honor graduate of Southwestern who later graduated from the University of Wisconsin School of Banking and Harvard University's Advanced Management Program. He began his career with First Tennessee Bank in 1946. His appointment as vice chairman of the bank came in 1976. Last September he also assumed the responsibilities of vice chairman of First Tennessee National Corp. and member of the board of directors.

He is affiliated with numerous local and national groups, including Kiwanis Club of Memphis, the English Speaking Union, the Memphis Executives Club and Robert Morris Associates.

## Governance issue remains unresolved

Continued from page 1  
an issue is raised, the President has already made up his mind," Prof. Jobs continued. "This makes for a feeling of frustration. Not only is free and open discussion important, but where in the process it comes is important. You would like to have it happen before minds are made up," he explained.

"There have been serious questions as to whether the President understands the college, its tradition, history, and consequently whether he is qualified to run it," said Prof. Farris.

"It seems that the only solution may be for the President to delegate certain matters outright to the Dean, Associate Dean, and Faculty, or else to alter his way of doing things," concluded Prof. Jobs.

The Professors also noted philosophical differences they have with the Board.

"To many Board members, faculty members are employees, period," said Prof. White. "The Board is not familiar with the faculty mind. The make-up of the Board suggests primarily lawyer or businessman, and its mind set is collectively different from the collective faculty mind," she explained.

"One basic problem has been that they (the Board members) lack information," said Prof. Farris. "Some of them seem to realize this now."

Becoming better informed may not cause either the Board or faculty to change their positions.

"I think it unlikely that the

faculty will change its view about proper governance, and I think that this view is correct," said Prof. Jobs. "It is sanctioned by the developed way of doing business that has developed at the college and that seems to be the prevailing way at most or all colleges of the better sort."

In addition to the larger philosophical differences of governance, some questions still remain as to whether the tenure issue has been completely resolved.

"I would say that depends on how it works out in practice," said Prof. Hatfield. "There is a sufficient degree of ambiguity in the way the policy is stated so as to leave it open as to whether tenure will actually be granted to anybody. If it turns out that tenure can be granted where deserved and warranted - that is one thing. If this is not the case, then it is an entirely different matter," he said.

"The specific issue of faculty tenure for administrators is now resolved through a difficult compromise," said Prof. White. "There are other issues decided by the Board that the faculty is not happy with."

"There are members of the faculty who are bitterly opposed to quantifiable student evaluation," she said. "I hear the faculty saying that numbers will be attached to people and then misused."

Prof. White also noted that some students have voiced concern over the evaluations.

"I dislike seeing all this mistrust," she said.

Both President Daughdrill and the faculty members have expressed hope that they can define the nature of the office of EVP-Dean.

Prof. Hatfield stressed that the Dean exercises a leadership role with the faculty, not a management role.

"It seems that the Dean's relationship to the faculty is special in that he has a role to play in determining the position of the faculty, not just communicating their views," he said.

"I think that where we go from here is still up in the air," Prof. Hatfield concluded. "A lot of what happens is tied into what goes into the selection of a new Dean, and that is still undetermined."

"There are great variations in optimism among faculty members as people began to speak about reconciliation," said Prof. Farris. He observed that he is not one of the more optimistic.

Throughout the interviews, faculty members voiced their opinions in a reconciliatory tone of healing.

"The faculty has made a few mistakes, too," said Prof. White. "I would like to see us look forward and quit mowing over the past. In my opinion, the thing to do is to go ahead with things."

**11**

Reception Given by Dr. Ernst Ingendaay, Consul General of the Federal Republic of Germany, Dixon Gallery & Gardens, 7-9 P.M., Invitation Only

Exhibit—German Expressionists and Impressionists, Dixon Gallery and Gardens, 1-5 P.M., Tues.-Sat., Admission: Adults, \$1; Students, children & senior citizens, \$.50

Memphis Public Library's Friday Flicks Program, "Nibelungs: Siegfried by Fritz Lang, Memphis Public Library, Meeting Rooms A & B, 4 P.M. and 7 P.M.

Beale Street Workshops, workshops in selected schools, conducted by blues artists.

Miss Black America of Memphis Pageant, Orpheum Theatre, 8 P.M., \$15 at door or information available at the Tri-State Defender

**12**

Memphis in May Beale Street Music Festival, Handy Circle, 1-10:30 P.M. Sponsored by Holiday Inns, Inc.

Wesley Highland Manor Country Fair, Parking Lot, Norriswood Dr.

**13**

Memphis in May Gospel Churches Open House, 11 A.M. - Mt. Moriah Baptist Church, East, Mr. Vernon Baptist Church, Olivet Baptist Church, 7 P.M. - Middle Baptist Church

Dr. Adrian Ash, Lecturer, "The Great American Windfall: Illustrious Emigres to the United States 1930-1945", Brooks Memorial Art Gallery, 2:30 P.M.

Organ Recital (Adult Students) Performing music by German composers, Christ United Methodist Church, 3 P.M.

Girls' Clubs of America Week, May 13 - May 19.

**14**

Annual Know Your Government Tour, luncheon at the Petroleum Club, call League of Women Voters office for further information, 767-2351

**15**

Down on Beale - Beale Street Repertory Company and Memphis State University, Memphis State University Showcase Theatre, 8 P.M., \$2.50, \$3.50

**16**

New German Cinema Film Series, "The American Friend", By Wim Wenders, Memphis Academy of Arts, 7 P.M.

Down on Beale - Beale Street Repertory Company & Memphis State University Theatre, 8 P.M., \$2.50, \$3.50

Happy Birthday Party, Girls' Clubs of America, Mid America Mall, 11:30 A.M. - 1:30 P.M.

**17**

Theatre - Opening of "The Marriage of Mr. Mississippi", Written by Friedrich Durrenmatt, Circuit Playhouse, Fri., Sat., Sun. evenings, \$3, \$4

German Film Comedy Series, "The Confessions of Felix Krull," by Kurt Hoffman, First Tennessee Bank Auditorium, Third & Madison, 6:30-9:30 P.M., \$5 for the series, or \$1.50 per film

Down on Beale - Beale Street Repertory Company & Memphis State University, Memphis State Univ. Showcase Theatre, Curtain: 8 P.M., \$2.50, \$3.50

American Business Women's Association's Central Regional Meeting - May 17-20

Meeting - May 17-20

John Simmons Salutes Memphis in May, German Cooking Demonstration, 6-8 P.M. Free and open to public.



"And then, Mr. Turpin, I erased all the registered students' course code numbers from the computer..." (photo by John Peoples)



Kitty and Mary take a break from making a pizza to share a few laughs (photo by Boyd Chitwood)

## Kitty and Mary add personality to Lair

by David Eades

If you should want some lively company during a study break, some insightful views into recent British history, or just extra helpings of french fries and pizza toppings, get to know Katherine Chidester and Mary Reeves, better known as Kitty and Mary, in the Lynx Lair.

These two remarkable women have established themselves as an integral part of the Southwestern community. They both came to work here four years ago after meeting at the Memphis chapter of the Trans-Atlantic Brides and Parents Association or the British Club for short.

Mary, a Scotswoman, is the quieter and more reflective of the two. Nevertheless, she is an

excellent conversationalist with a quick wit and an incredibly warm smile.

She has four children who are all still in school. Perhaps the greatest moment in her life, she relates, was her trip back to Edinborough, Scotland, with her children who had never seen their mother's homeland. When asked if she had a friendly rivalry going on with Kitty, who is from England, she replied, "No, you've gotten me confused with the Irish, besides, I married an Englishman."

Her hobbies include bowling and strawberry picking—she'll take you along if you ever want to go—and serving as Vice President of the British Club.

"The main reason I work here," she says, "is because I love the kids. They're a lot more important than the money."

Kitty came to the U.S. right after World War II from Ipswich as the wife of an American G.I. She also has four children, one, Michael, a recent Southwestern graduate. Kitty, who unlike Mary, is a naturalized citizen. "A fool traitor," she laughs. "Only in America would a widow be able to put four children through college and two through medical school."

Still, she is an Englishwoman at heart and proudly recalls the courage of her countrymen during the blitzkriegs of the war. Ipswich, a port on the English Channel, is just east of London and was bombed heavily.

"After awhile, you just got used to it," she relates, "England was a brave little country, not like the French who just rolled over and played dead. Since the war, England has been done wrong."

Like most Britons, however, Kitty believes that the country will eventually and inevitably bounce back. Fittingly, she is president of the British Club. She also enjoys strawberry picking and claims to be an excellent cook. She might seem fiery and harsh at first impression, but she's as good-hearted and warm a person as you'll ever meet.

Because she's been here four years she holds a special affinity for this year's graduating class. "I'm a senior graduating with honors in home ec," she states.

Hopefully, she and Mary won't "graduate." There is a possibility that the new cafeteria service will take over the Lynx Lair from Ray Gammons. If that should happen, it would definitely sadden a lot of people. Kitty and Mary have made many friends on campus. They are as much a part of the Southwestern community as anyone.

## Singers present Broadway review

The Southwestern Singers will present "Broadway Looks at Life," a review of the American musical stage, at 8 p.m., Wednesday through Saturday (May 16 through 19), in Hardie Auditorium.

Admission to the show will be \$3.50 per person. Tickets can be obtained from the Southwestern Music Department office.

The Singers, conducted by Prof. Tony Lee Garner, recently returned from a performing tour of Russia and Poland under the auspices of the Friendship Ambassadors program. "Broadway Looks at Life" was the ensemble's tour program.

The production features songs dating from 1904 to the present, which deal with universal themes from American life. Garner developed the show with help from Dr. Michael Lupfer, a Memphis State University professor. The production highlights the works of composers Richard Rogers, George Gershwin and Stephen Sondheim.

## Survey examines views on sex

by Sue Deeser

In March, ten students chose to conduct a survey on sexuality at Southwestern as an optional project for Prof. Carl Walter's Religion 231 "Social Issues in Ethical and Religious Perspective" class.

The purpose of the survey was primarily to find out people's reactions to the questions on the survey. The statistics themselves were only an added interest. The survey was taken to determine if the class group's feelings were representative of the feelings of other Southwestern students. The

class's views did turn out to be representative of campus feelings.

The 'sex' survey does not represent an official position or statement from Southwestern at Memphis. The survey was a random poll taken by students and represents the reactions of only 50% of the student body.

The class project was conducted by: Martha Fitts, Caroline Morgan, Hunter Hodge, Ellen Stammer, Sam Patterson, Mimi Ward, Spike Phillips, John Miller, Steve Belcher, and Sue Deeser.

The class noticed that 98% of the men returned their surveys to

students unfolded and face-up. Less than 2% of the women returned their surveys unfolded and face-up.

More women (286) completed the survey than men (200). Thus the results comparing male and female responses are statistically biased. The number of people participating in the survey, listed by class are as follows: 164 freshmen, 141 sophomores, 90 juniors, 92 seniors.

More males (15%) than females (7%) go to social functions alone, while more females (31%) than males (17%) go to social functions

with the same sex group. The percentage of people going to social functions with dates or with mixed sex groups is the same for males and females.

The survey group found it surprising that 89% of males and 88% of females felt that they were able to verbalize their feelings about sex. The group found this surprising because they had noticed a tendency for people to act without saying how they felt. One group member said she still questions the validity of this statistic.

Of the students polled 69% of the males and 52% of the females had engaged in sexual intercourse. Of these people, 42% had intercourse before coming to college, and 18% of the people first had intercourse after coming to college. Of these people polled, 28% were currently (as of March) involved in relationships which included intercourse. More people had had intercourse before coming to college. This may appear strange since there seem to be fewer restrictions and more opportunities for sexual activity at college than at home.

The survey group felt the lower frequency of college intercourse relationships is due to a heightened responsibility and respect of college students for their partners.

Of the people polled 27% of males and 69% of the females preferred their partner to take the sexual initiative. The fact that the statistics are not 0% for men and 100% for women indicates the need for open communication about desires or sexual needs.

The survey group expresses concern with the statistics that 3% of the women having intercourse were not using contraceptives.

Once again the group thanks everyone for cooperating. Any questions concerning the survey and statistics should be directed to Caroline Morgan or Sue Deeser.

## Rush evaluated

Continued from page 1

that no concrete proposals about changes in rush would be made this year. One topic defeated was the need for better communication, and a resolution was passed unanimously for next year that the CLC agenda will be printed in SFA and all interested parties may attend by informing the committee chairman, with the understanding that the committee reserves the right to vote in executive session as it has traditionally done.

Also discussed were more effective means to solicit campus-wide opinions on problems with the Southwestern community as a whole. CLC will finish up the year by raising a concrete list of concerns that the committee hopes campus groups will address throughout next year.

## Woody meets his enemy in Manhattan

by Edward Wheatley

Woody Allen has the makings of an epic hero. He embodies the most prominent qualities of our spiritually insecure, aimless era, and he is fighting against the evils which threaten our society. He has met the enemy, and they are us.

In his latest movie, *Manhattan*, he brings back to life the romance of the Big Apple with lingering black-and-white shots of the New York skyline to the accompaniment of the greatest of Gershwin's tunes; at the same time Isaac Davis (Allen) argues with himself about how to begin Chapter 1. He loves the city, but he romanticizes everything; is New York a bustling center of positive energy or "a metaphor for the decay of our society"? He cannot decide.

Davis is a frustrated 42-year-old TV writer, twice divorced. His second marriage ended with his wife (Meryl Streep) leaving him for a woman, and he lives in fear of the book she is writing about their marriage. For him, the book is "a humiliating experience," but for her it is "an honest account of their breakup." Each of them knows it is both. As Davis carries on an affair

with 17-year-old Tracy (Mariel Hemingway), his friend Yale (Michael Murphy) is carrying on an extra-marital fling with journalist Mary Wilke (Diane Keaton). She is the "new" New Yorker who is from Philadelphia "where we still believe in God"; her geographical insecurity manifests itself in all the right pop phraseology and instant cynicism of the art crowd. But, her parents have been married for 43 years, and she cannot reconcile herself to her affair. The epic battles begin; everyone fights with the others and with himself.

The characters, although recognizably the stock of Allen's trade since *Annie Hall*, are never stale. No matter how predictable they may be (particularly Mary and Isaac), they still merit attention, largely because they are still struggling with the problems that plague their white, aesthetically aware, upper-middle-class portion of society. These problems are ultimately everyone's concern.

The performances are consistently excellent. Particularly fine are Mariel Hemingway, whose precocious teenager wavers between innocence and elegance,

and Anne Byrne as Yale's wife.

The superiority of the cast is paralleled by Allen's direction and some superb photography. A scene in the Adler Planetarium treats light with an incredibly fine technique; in that five-minute sequence, the return to black-and-white is explained with surprisingly simple eloquence.

Humor, which used to be the reason to see a Woody Allen movie, remains important in *Manhattan*, but it is transparent enough that the importance of his questions can be clearly discerned through it. The bust-a-gut chase scenes and naive fumbblings with women were gone in *Annie Hall*, and they are absent here. Now Allen, is dealing with more valid problems than how to provide a cheap laugh, but humor still aids in his pursuits.

*Manhattan* is showing at the Malco Quartet.

## Groups honor new members

An Honors Banquet, sponsored by Phi Beta Kappa, Omicron Delta Kappa, and Mortar Board, was held on Monday, May 7, to honor the newly-elected members of the three honor societies and the students who qualified for the Honor Roll for second term.

The highlight of the evening was the presentation of honorary membership in Phi Beta Kappa to Dean Charles Warren, for which he received a standing ovation.

The guest speaker was Dr. Jameson M. Jones, President of the Memphis Academy of Arts, who spoke on the topic "Expanding Language."

Tom Parrish, ODK president, presented the new ODK members. Edward Wheatley, Mortar Board vice-president, announced the newly-elected members of Mortar Board. Prof. Emmett Anderson announced the new Phi Beta Kappa members and Prof. Bernice White presented each of them with a certificate and a key.

## Kinney Korner: hospital work

Kinney provides hospital experience for many students (a surprisingly large percentage of which are non-science majors!). Students contribute their time and talents to both LeBonheur Children's Hospital and the Johnson Auxiliary at the City of Memphis Hospital. Eighteen students—James Smith, Jane Van Deren, Terry More, John Murphy, Donna Perdue, Melissa Appleton, Hunter Shannon-house, Cheryl Cherry, Bill Grabenstein, Steve Jacobsen, Bill Caulkins, Randy Sumner, Lillie Grayson, Dabney Gillespie, Rebecca Tsaropoulos, Pedra Meeks, Karen Ervin, and Mac McDaniel—work once or twice weekly at LeBonheur in such

diverse areas as labs, emergency rooms, waiting rooms, offices, and pharmacy. At the Johnson Auxiliary Sherri Godi does labwork, and Becky Butler works with patients.

Our appreciation is a little overdue to all those who represented the faculty, administration, and student body in our April 29 tennis tournament. Over \$100 was raised to benefit the Mid-town Mental Health Center. Greg Yeatman and Kay Batey captured the student division; Dr. Douglas Hatfield and Sarah Neale won the graduate flight. Runner-up pairings were Joe Nash-Sara Anderson and Dr. Bob Amy-Dana Love.

## Mullady chosen by pros

by Joe Krakoviak

Tom Mullady was selected by the Buffalo Bills of the National Football League in the seventh round of the college draft to cap a brilliant career as a four-year starter.

Officials of the Bills expect him to make the team as the reserve tight-end, the position as which he set many records while at Southwestern.

Mullady's shot at professional football, however, is the result of not only skill, but a little luck. "There were several other players being recruited by big schools in my senior year (at the McCallie School at Chattanooga). I didn't get a scholarship, so I came to Southwestern mainly for its academic reputation."

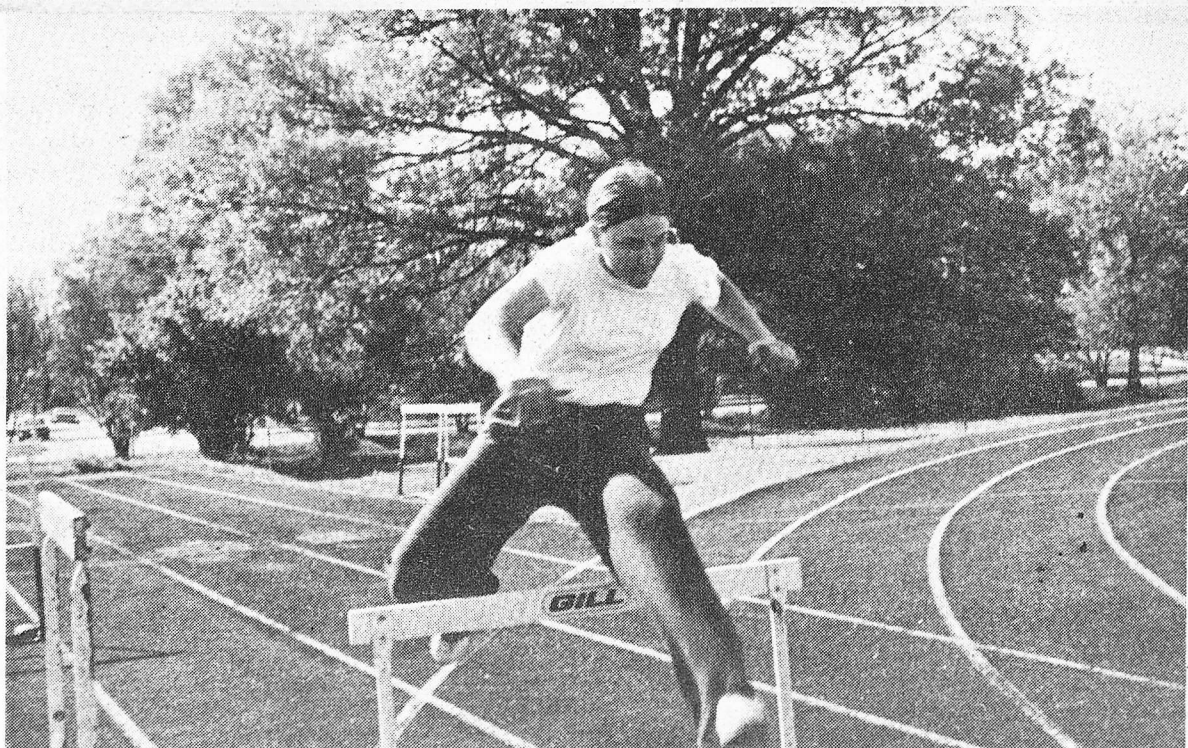
The football team, which was then coming off a 3-3-3 season, greatly improved in the next years, with a little help from Mullady.

He traveled to Buffalo last weekend for a physical and a look around town. He knows about the heavy snows that the town is

famous for, but he said "I'll worry about that later. Right now the most important thing is making the team."

He will return there for a short mini-camp on May 19 and 20, which precedes the main training camp in July. He will put his business major to good use by acting as his own agent in contract negotiations.

In his four years at Southwestern, Mullady piled up some impressive statistics. In 37 games, he caught 149 passes (a SAM record) for 2152 yards (also a SAM record) and 25 touchdowns. He holds the school record for most receptions in a single game (13) and most yards in single game (267). He was named to the all-CAC team in his last three seasons.



Cathy Goetz leaps over hurdle in meet against Rust College.

## Women's track posts two wins and one loss

by Coach Freeman Marr  
Rust College defeated Southwestern Women's Track Team 64 to

60, April 28. It was a cliffhanger that saw some tremendous performances by Southwestern girls. Cathy Goetz won the shot put, discus, javelin, high hurdles and intermediate hurdles and ran on both the relay teams. Lisa Gilchrist gave a tremendously courageous performance running the quarter, the two-mile and immediately upon finishing the two-mile, ran the anchor lap on the mile relay team. Liz Hart turned in a great performance running the mile, half-mile and two mile for Southwestern, and Carol McCown threw the shot put, discus, javelin, high jump and long jump, ran the high hurdles and the intermediate hurdles on behalf of her team. Margaret Couch continued her winning ways in winning the half and the 440 relay team consisting of Andrea Gilliam, Margaret Bane, Cathy Goetz, and Lisa Gilchrist, while in a losing

effort, still turned in its best time of the season with a sparkling 56.1.

There isn't any question had the team been at full strength we would have defeated Rust. Two girls were taking tests. They would have the difference in the meet without question.

It was an exciting meet, and it came down to the wire that the mile relay would be the deciding event. The winner of the mile relay would win the meet, and Rust College won it by a foot.

Southwestern defeated Centre College 84 to 42 at Danville, KY, Friday, May 4th for the First College Athletic Conference Women's Championships. Principia forfeited.

Lisa Gilchrist won the 440 in a very hard-fought race and Margaret Bane set a new record winning the 100 in 12.69 followed by Andrea Gilliam for second place in the 100. In the 220 Margaret and Andrea repeated the same

performance. Margaret won the 220 in 29.2 and again followed by Andrea. Margaret Couch continued her winning ways in the 880 and Molly McLemore, replacing the injured Liz Hart, doubled and won the mile and the two mile. The 440 relay team of Gilliam, Bane, Gilchrist, and Goetz again took the victory and the mile relay team consisting of the same with the exception that Couch replaced Gilliam, continued their winning ways. Cathy Goetz again being the mainstay of the team and high point scorer won the shot, discus and javelin, placed second in both the intermediate and the high hurdles. Carol McGowan had a big day for her team placing second in the shot, discus and javelin, third in the high jump and tied for second in the long jump. Murphy Watson took second place in the high jump and Cissy Sights took a third in both the intermediate hurdles and the high hurdles.

The girls terminated their season Tuesday, May 8, against the Memphis Marine Corps.

## Greg Volgas refuses pro soccer contract

by Paul Mackin

Chances of becoming a professional athlete are not great. They are even slimmer for Americans if your game is soccer. Then how would it feel to be approached by a professional team interested in signing you to a contract?

Ask Greg Volgas. Last year while playing with the state champion team for 19-year-olds and under, with Southwestern's varsity team and practicing with the Memphis Rogues he was asked to sign an amateur contract. Greg decided against signing; it would have barred him from collegiate competition or Olympic play.

Greg started playing soccer in Memphis in 1969. Two years later, he was on a 16 and under team coached by Sepp Huber who is currently the Southwestern soccer coach. For the next seven years, on this team and on Sepp's 19 and under team, Greg went to state championships and regional finalists' tournaments in different parts of the country.

The summer before his freshman year, Greg attended a soccer camp in Delaware organized by the Philadelphia Fury goalkeeper

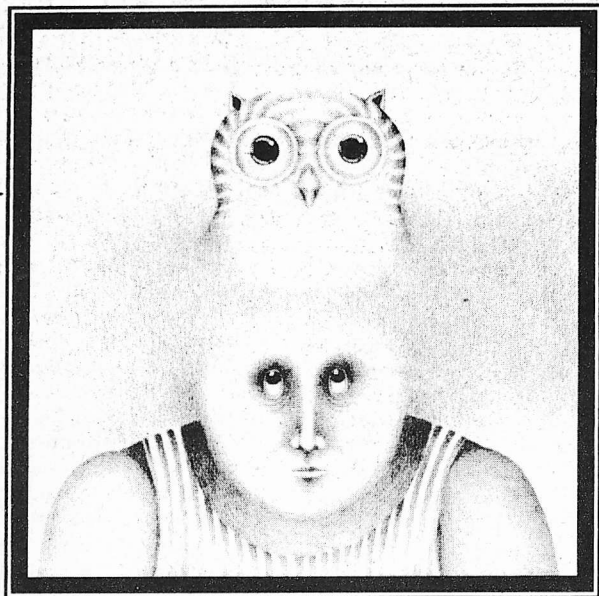
Keith von Erin. Greg left the camp with top goalkeeping honors. Last summer Greg went to Olympic tryouts in St. Louis. A coach who was also present told Sepp Huber later that he thought Greg was rated second of those who tried out.

Last year when the Rogues came to town was Greg's busiest year. He was playing on the state champion Kickers (19 and under), playing with Southwestern's varsity squad and practicing with the Rogues - not to mention classes and working nights 3 times a week.

This year Greg is still practicing with the Rogues and playing for Southwestern. Although he can no longer play for the Kickers junior or sophomore teams he does help coach the goalkeepers on those teams.

I went with Greg to an appointment he had with his optometrist recently, and as the man checked Greg's lenses he asked Greg if he was a sophomore this year and was he still pursuing a degree in physics. Greg replied that he was, and the doctor asked him what he would do with his degree in physics. Greg smiled and said, "Play soccer."

## SOMETHING NEW UNDER THE SUN



"There are few publishers whose books are so distinctive that the mention of their names conjures up an immediate picture of a recognizable style.

One such publisher is Harlin Quist.

His Hallmark:

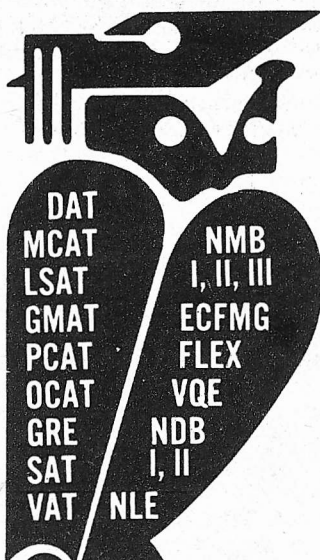
Imaginative, distinctive bookmaking."

The New York Times

Available now in  
Southwestern Bookstore

For something New Under Your Sun...  
come visit your  
**Southwestern Bookstore**  
Shop 8:30 a.m. - 4:30 p.m.  
Monday - Friday

Prepare For: **Our 40th Year**



TEST PREPARATION SPECIALISTS SINCE 1938

**Stanley H. KAPLAN**

Educational Center

Call Days Evenings & Weekends

Prepare Now For  
Spring MCAT, DAT & LSAT

2600 Poplar  
458-6401

Memphis, Tenn.

For Information About Other Centers  
In Major US Cities & Abroad  
Outside NY State  
CALL TOLL FREE: 800-223-1782