

**STUDENTS—**  
Advertisers believe in Southwestern. Show them your appreciation by supporting them.

**EDITORIALS—**  
"The Fraternity Leach"  
"An Impressive Event"

16TH YEAR

SOUTHWESTERN, MEMPHIS, TENN., FRIDAY, NOVEMBER 2, 1934

Number 7

## COUNCIL WILL ASK ODK AID ON INSURANCE

### Collecting Premiums On Senior Gift Policy Is Purpose

### NEED PERMANENT, RESPONSIBLE GROUP

### Freshmen To Vote Soon Intention To Follow Gift Method

Discussion on the senior insurance endorsement policy was held at the second meeting of the Student Council Wednesday in the Bell Room of Neely Hall.

It was decided to hold the freshmen class election soon to ratify the intention of that class to fall in line with the other classes in paying their part of the policy as a senior class gift when they become seniors.

The policy is a twenty-year endorsement policy of \$5000. Each year the senior class is to pay the premium as their gift to Southwestern.

#### Request ODK's Aid

Realizing that some permanent organization should be set up to provide for the responsibility of collecting the premiums during the years that the policy is in force, the Council, at the suggestion of Maclemore Elder, president, who had conferred with Dr. Diehl, moved that Omicron Delta Kappa be requested to take over the responsibility.

Since that organization has members who remain at the institution permanently, it was thought best to seek their aid.

When the policy is paid out the entire amount is to be turned over to the College as endowment.

Jimmie Meadow explained to the Council that the free phone had to be placed in its present location because of a requirement of the telephone company that free phones cannot be put in public places unless under a private name. A. H. Sarafian and J. A. Rollow were consulted and it was decided to place it where it now is.

#### To Suggest Bon Fire

The Council decided to suggest that Friday night prior to the Kentucky-Southwestern game would be the best time for the traditional bon fire. Saturday would be Homecoming Day and a large number of alumni would be present.

## STOVES SPEAKS BEFORE CHAPEL

### First Methodist Pastor Tells Of "Reality Of The Spiritual"

The Southwestern student body and faculty had the opportunity Wednesday morning of hearing one of the best speakers ever to make an address in the college. He was Dr. George Stoves, pastor of the First Methodist Church in Memphis.

Speaking on "The Reality of the Spiritual," Dr. Stoves impressed on the students' minds that it is a man's spiritual capacity rather than his physical ability which lifts him above the majority of human beings. Being a most interesting speaker, he held the students' attention as he expounded to them the desirability of creating for themselves a goal of high, spiritual ideals toward which they should strive.

The student body is hoping that it will again have the pleasure of hearing Dr. Stoves at Southwestern.

#### KAPPA DELTA ENTERTAINS

Kappa Delta entertained Wednesday night with a supper at their lodge. Cynthia Weathersby and Marietta Morris were in charge of arrangements.

#### TRI DELTA INITIATES

Delta Delta Delta announces the initiation of Elizabeth Nash, sophomore, who received the Trident degree Tuesday night and the Stars and Crescent degree Thursday night.

## First Panhellenic Will Be Held On Nov. 30 At Peabody

The Men's Panhellenic Council will entertain with its first dance Friday night, November 30, in the ballroom of the Peabody Hotel.

Bill Taylor and his Royal Collegians will furnish the music. There will be four no-breaks and three specials.

Arrangements for the dance are in charge of Duff Gaither, president of the council. The other officers are Jack Crosby, vice-president and Henry Watkins, treasurer.

Other members of the council are Richard Alexander and Richard Drake, TNE; Beverly Buckingham and Ben Boggy, PIKA; Robert Brown and Richard Dunlap, ATO; John Gaither, KA; Harold Simmons, SAE; Alvan Tate, KS; and Bob Williams and Don Johnson, Sigma Nu.

## SUBMIT BIDS FOR YEAR BOOK

### Active Work Started On Publication Of New Year Book

Rodney Baine, editor of the Senior Year Book, reports that active work has been started on the publication.

Bids have been presented by a number of photographic firms for the taking of individual and group pictures. Efforts are being made to secure a reduction in photographic rates so that the difference may be applied to other sections of the book.

No definite action has been taken by the sororities as to whether they will have group or individual pictures.

## MUSIC CLUB WILL HOLD MEET SUNDAY

The Southwestern Music Club will hold its monthly meeting Sunday afternoon from 3 until 4 o'clock in the chapel.

The following program has been arranged:

Canzonetta from Violin Concerto ..... By Tchaikowsky  
..... Hope Brewster  
Norchie Saga ..... Sara Elizabeth Gemmill  
An Old English Ballad ..... Professor Eric Haden  
Liebstrumm by Liszt ..... Charles Hamilton  
Prelude in C Minor by Rachmaninoff ..... Charles Hamilton  
Luxemburg Garden ..... by Manning Ethel Taylor  
A Bowl of Roses ..... by Clark Ethel Taylor

The club anticipates having Mr. Walter Chapman, noted pianist, on the program next month.

## WATKINS, BATTLE HAVE BEST STORIES

Henry Watkins' news story on the Senior Year Book and Irene Battle's feature story on the formation of a date bureau were chosen by The Sou'wester staff as the two best articles in last week's paper.

The selection was based on the newspaper composition and on its interest to the student body.

## Gartside Best Since Newton, High

RUDY GARTSIDE, who has scored two of the three touchdowns chalked up by Southwestern this year, is one of the best athletes seen here since the days of Newton and High. Rudy, who is a sophomore, hails from Humes High where he was outstanding in football, basketball, baseball, and wrestling.

Although he is a swell football player, Rudy prefers baseball; and his biggest thrill came last summer when he knocked a home run with two men on to win the game. However, his ability as a football player is known by all the fans in Memphis. The power plays of the Lynx are built around him and he does the punting as well as most of the passing.

As a wrestler, Gartside's ability was never better demonstrated than when he floored Jug Owens in 27 seconds. "Jug can throw the ball, but he can't throw me," says Rudy. Gartside scored the most points on the Bobcat basketball team last year; he will be a big help to this year's varsity basketball.

"My hobby is makin' things outta leather and doin' things with wood; you know, furniture and stuff. Naw, I hate dancin', but I like sport pictures or musical comedy pictures; and I'm crazy about ice cream."

Rudy says that he would like to coach after he gets out of school—which will probably be a long time, he says. But just in case, he will probably farm. If he makes a lot of money, he will spend it by traveling. Tuesday he pledged ATO.

And last but not least, we find that Rudy would rather go riding in his new Ford with his girl than do anything else. Martha Baker is said girl and she lives on Goodwyn Avenue. She dates one one but Rudy, and—as the girls here have found out—that goes for him too. Incidentally, after taking a look at Martha, you will find that Gartside would make a pretty good beauty contest judge.



RUDY GARTSIDE

## JOURNAL WILL APPEAR NOV. 20

### Magazine Will Contain Works Of Southern Students

Maurice Carlson, editor of the "Journal," announces that the magazine will appear about November 20. This year's edition will be larger than was last year's.

Heretofore its contributors have been restricted to Southwestern students, but this year representative works of several southern writers will be included. The poems of a Vanderbilt student, Marion O'Donnell, are to be featured.

Kate Galbreath and David Flowers are the assistant editors.

#### STYLUS PAPERS DUE

Stylus Club manuscripts are due tomorrow at noon. Rodney Baine, president of the group, announced that the papers will be read at the meeting at that time. The papers are not to be signed and should be typewritten.

#### SIGMA NU INITIATES

Sigma Nu fraternity announces the initiation of Jim Breyspraak, Memphis. He is a sophomore.

## All Celebrities Are In Crowd To See Frosh Win Game

A goodly number of students turned out to lend their support to the freshmen team Friday. Seeing and being seen were: Charlotte Drake, Janet Tucker, Nancy Warden and Elizabeth Cobb in riding pants. . . . Rose Lynn Barnard trying to get by John Perry Gaither without a ticket. . . . Marion Cobb and Sidney Strickland selling ice cream sandwiches. . . . Jean Reid breaking a deep silence by yelling "Come on, Gus" . . . Dr. Davis wearing a most brilliant purple tie. . . . Alice Hagler searching for someone (was it McCoy or McKay?) . . . L. A. Duffce remarking, "This is a very spectacular game" . . . Ann Jeter and Betty Foley throwing peanuts. . . . Gene Stewart saying, when a player fell into a box of football equipment, "No use crying over spilled headgears" . . . Jessie Richmond choking on a coke when Porter Chapell made a long run. . . . Dan Wingo, the true Gentleman, lending his coat to Sandy Dreishack. . . . Charles Led-singer calling Ben Boggy, "My pro-longated friend" . . . Sis Portlock, Muriel Buckingham and Anne Grymes applauding the whole team. . . . Chicken High being smoked out of the press box by the aroma of Hen-

## TRI-DELTA TO HAVE DANCE IN LODGE TONIGHT

### Pledges To Be Honored; Refreshments To Be Served

### TAYLOR WILL PLAY 'TRI-DELTA MOON'

### Block Bids Extended To All Fraternities On Campus

Delta Psi Chapter of Delta Delta Delta Sorority will entertain tonight with a dance in their lodge, from 8 till 11 o'clock honoring the pledges of the group. During intermission refreshments will be served.

Music will be furnished by Bill Taylor and His Royal Collegians. There will be an active lead-out when "Under the Tri Delta Moon" will be played, and also a pledge lead-out.

Block bids have been extended to all fraternities on the campus. All non-fraternity men are also invited.

#### Active Members

Active members and their escorts include:

Sarah Elizabeth Gemmill, president, with Roger Breyspraak; Virginia Alexander, vice president, with escort; Annie Laurie Pentecost, secretary, with Dudley Hettinger; Thelma Worthington, treasurer, with Ned Wright.

Olivia Reames with Jim Tompkins, Charlotte Stange with Bill Byrd, Ethel Taylor with Fred Dabolt, Helen Acroyd with escort, Dorothy Jackson with Leon Patton, Kate Guilian with Erskine Falls, Shirley Freshman with Jimmy Freeman, Adele Bigelow with Arthur Womble, Elizabeth Nash with Lewis Jayroe.

#### Pledge List

Pledges to be honored and their escorts are: Nancy Haygood, president, with Jim Breyspraak; Ann Bruner, secretary, with Hi Lumpkin; Julia Black, treasurer, with James Watt; Martha Bailey with Carroll Varner, Edith Chesboro with escort, Cornelia Crinkley with George Willis. Charlotte Drake with Russell Hillis, Elizabeth Fancher with DeWitt Braddock, Frances Gladney with Carl Rhodes, Betty Jones with Tommy Fuller, Molly McCord with Alfred Page, Louise Morrow with Bob Williams, Bernadine Taylor with Warren Prewitt, Elizabeth Tefft with John Farley, Dorothy Walker with Richard Alexander, Dorothy Givins with James Gladney, Agnes Joyce Hart with Fred Dickson.

#### Other Sororities

Representatives from the other sororities will be: Mary Sands Drisbach, A. O. Pi, with Jimmie Meadow; Sara Carter, Kappa Delta, with Shelton Henderson; Billie Mills Bush, Chi Omega, with Jameson Jones; Laura Lee Cook, Zeta Tau Alpha, with escort.

Chaperones will be: Mr. and Mrs. Allan Tate, Mr. and Mrs. James Haygood. ry Watkins' cigar. . . . Marian Kiesker sympathizing audibly with an injured opponent. . . . Adrian Stockard calmly smoking his pipe thruout the excitement of a touchdown. . . . Bernice Cavett, Lib Pearce and Louise Braxton discussing the cheering with the ol' master cheerer, Alvan Tate. . . . Ned Wright watching the game with opera glasses.

## Birmingham-Southern Arrives Unbeaten To Play Lynx Tomorrow

### BLACK, TAYLOR TO BE LYNX SPONSORS

### Another Revamped Team Will Take The Field In Southwestern's Colors

SOUTHWESTERN plays a strong Birmingham-Southern grid machine on Fargason Field to-morrow afternoon at 2 o'clock. Another revamped Lynx team will take the field in an attempt to stop one of the most powerful invaders that has set foot on Fargason Field in many a day.

## DANCE WILL FOLLOW GAME

### Third of Athletic Dances Will Follow At Casino

Southwestern Athletic Committee will sponsor its third dance of the year Saturday night at the Casino from 9 till 1 o'clock. The dance will honor the Southwestern and Birmingham-Southern football teams.

Bill Taylor and His Royal Collegians will furnish the music. There will be four no-breaks, three specials and an athletic lead-out.

Among those attending will be: Jean Byars with Eddie Sanders; Josephine Ingram with Leslie Buchman; Olive Black with Hudson Dick; Elizabeth Nash with Lewis Jayroe; Nancy Warden with Gene Early; Alice Hagler with Richard Mays; Rebecca Laughlin with Charles Sherman; Ann Jeter with Leon Jones; Sarah Elizabeth Gemmill with McLemore Elder; Ethel Taylor with Ed Henry.

## AOPi CARNIVAL DANCE NOV. 9

### Costumes To Be Worn Will Carry Out Carnival

Alpha Omicron Pi will entertain Friday, November 9, with a carnival costume party in the campus lodge. Decorations will follow out the motif of the dance and the guests will be garbed in costumes of carnival life.

Music will be furnished by Bill Taylor and his Royal Collegians.

#### EPISCOPAL CLUB TO MEET

The Episcopal Club will meet Tuesday, November 6, at 7:30 p.m., at the home of Jean Reid, 1544 Vinton. Miss Mary Love, a delegate to the General Convention at Atlantic City, will give a talk on the convention.

Assisting Miss Reid will be Jane Belcher, and J. P. and Duff Gaither.

#### GRADES IN NOV. 13

Mid-semester grades will be handed into the office November 13, and the reports will be given to the students by their faculty advisers the following Saturday.

## 'Literary Digest' for 'Ballyhoo', 'Punch' for 'College Humor'—Maybe It's A 'New Outlook'

#### By MARIAN KEISKER

Ye old institution of learning has gone cultural. There's no doubt about it. Witness the current literature the students and pros so avidly lap up. Ballyhoo has slid into oblivion before the increasing popularity of *Literary Digest*. *Hoey* has taken the count and been declared out by enthusiastic readers of the *Psychological Clinic*. *College Humor* is considered mere high school stuff compared to the subtle humor of *Punch*.

Your snooping scribbler happened to stumble on the evidence of the sudden urge toward higher learning when he sneaked a look at the withdrawal slips on the magazines in the library. Behold! Scott Chapman and John Payne read every issue of *Literary Digest*.

But for some reason the last page seems to be more dog-eared and crumpled than the others.

Richard Drake ponders over *Banking* (three inch letters in red, naturally on the cover). Maybe he plans on ferreting out our last two cents in future years.

Evidently attempting to make a foursome with Will Rogers of those who know about Russia, Norma Shapiro, Dr. Townsend, and Dr. Davis are learning the secrets of the Reds from U. S. S. R. In *Construction*. According to the withdrawal slip, our childhood palsy-walsy, bringer of teddy bears and sugar plums (oh yeah! I got switches in mine.)—none other than Santa Claus—also reads U. S. S. R. This Russian system might complicate his work, at that.

Six peace-loving pupils have taken out *The Annals*, featuring a hair-raising article on "The Shadow of War." They are Gene Stewart, Gene Stewart, Gene Stewart, Gene Stewart, Gene Stewart, and Gene Stewart.

Living up to the precepts of dear old Arlington Hall, Mollie McCord stands alone as the sole reader of *Fortune* (featuring fashions and furbelows at \$1.00 per copy).

Leon "Dixie Daddy" Jones patronizes the *Christian Observer*.

Freshmen George Reames and Paul Freeman dutifully take out the *Delta of Sigma Nu*, as all good SN's should. Betty Kate Davidson is qualifying for the intelligencia by reading *Punch*—lone student among some twelve professors. (Tsk! Tsk! what was the remark Mrs. Townsend made about only persons with more than

average intelligence being able to appreciate *Punch*.)

While Jim Carey solves his little household problems by referring to *Good Housekeeping*, John Perry Gaither, George Willis, Margaret Varner, Babe Black, and Jean Byars strive for a psychological solution for their worries aided and somewhat abetted, we suspect, by reading *Psychological Clinic* and *Journal of Social Psychology*.

Southwestern's grand (stand) stars Weeks, Gattis, and Duffee contact the sports world in *Athletics*, and Kendall Rinehart learns the price of eggs and spinach from *United Business Service* leaves. The Colonel ponders over the spirit of the South as set forth by the *Sewanee Review*. (Where's that mint julep recipe, suh?)

Only two of our number seem to be slipping. Wayne Paulus has forsaken the exclusive ranks of R. O. T. C. (readers of the *Commercial*) and has gone over to *Current History*, and the little Wingo book-worm insists on keeping the *Virginia Quarterly Review* out of general circulation by signing his name on the slip for the rest of the semester.

Jessie Sowell and Marianna Stockard read up on the traffic accidents in the *London Illustrated News*, but complain that all the pictures look the same—rather hazy.

Thus forsaken by erstwhile friends and companions, Joe McCormick and Wendell Whittemore seek a *New Outlook*. (So say we all! What this country needs is a good 5 cent magazine.)

**COLLEGIATE POPULATION GROWS, SAYS REPORT**  
An encouraging average enrollment increase of at least 10 per cent over last year is evident from informal reports submitted by student government officials to the National Student Federation.

Western colleges showing the most marked increase attribute this condition to higher farm prices and in other parts of the country improved general business conditions are credited. Federal relief funds for part-time employment are responsible for at least 50,000 new students' registration, about 6 per cent of the total collegiate population. Lower tuition in a great many institutions may account for registration of some who otherwise would not be able to afford attendance.

Freshmen are more numerous in almost every college in the country. The class of 1938 at Columbia University is the largest since 1930, at Vassar the largest since 1929 and at Wellesley the largest in ten years. Universities such as Harvard, Brown and Colgate which have definite freshman limitations report a 35 per cent increase in applications.

In the Middle West there is no single report indicating enrollment decrease and on the West Coast, where the University of California at Berkeley leads the field with a 14 per cent increase, there is a definite indication that final figures will prove an upswing higher than the national average.

#### HOWELL APPRECIATES

W. H. (Doc) Howell, fully recovered from his recent appendectomy, has asked that his appreciation be expressed to the student body for their flowers and inquiries during his illness.

#### IN SYMPATHY

The Southwestern student body extends its sympathy to Miss Dorothy Vanden, of the office force, in the loss of her father last Tuesday.



THE SOUTHWESTER

ESTABLISHED 1919

VOL. XVI NO. 7



PUBLISHED WEEKLY By The STUDENTS OF SOUTHWESTERN, MEMPHIS, TENN.

Member Southern Collegiate Press Association

Entered as second-class matter at the postoffice at Memphis, Tenn., under the act of March 3, 1878.

JIMMIE MEADOW... Editor-in-Chief Room 304 Calvin Hall—Phone 7-9279 or 7-3110

MARTHA SHAFFER... Feature Editor JOHN QUANTY... Sports Editors TOMMY FULLER... News Editor HENRY WATKINS... News Editor NANCY WARDEN... Society Editor

Richard Alexander, Asst. News Editor Marion Cobb, Margaret Leuck Paul Freeman, Olga Hartmann J. O. Wallis, Richard Thomas Charles Taylor, Elizabeth Robinson David Flowers, Savilla Martin Molly McCord, Martha Bailey Leslie Buchanan, Joe Bell Dick Mays, Jack Crosby

Richard Dunlap, Murrach Gattis Harry Webb, Dan Wingo

Josephine Ingram, Gertrude Smith Amelia Wood, Marian Keisker Ross Lynn Battle, Irene Battle Betty Davidson, Frances Cunningham Eugenia Tully, Margaret Winchester

Harvey Heidelberg, Louisa Weeks Tom Jones

ALVAN TATE... Business Manager 209 S. McLean—Phone 7-3958

Circulation Managers DUFF GAITHER, GEORGE WILLIS JIM WALLACE, Asst. Circulation Manager ELDRIDE ARMISTEAD, Exchanges LOUIS DUFFEE, Advertising Manager Asst. Advertising Managers Lee McCormick, Jim Watson Ed McCormick, Wayne Paulus MARY SANDS DREISBACK, Secretary

An Impressive Event

THE EVENT of the fall is rolling around. The first Men's Panhellenic dance is to be given in a few weeks. Some have had dates for months. It will be an outstanding event on the student calendar.

It is more in keeping to have the dance in a more exclusive atmosphere, where only Southwestern students can be admitted, and the affair can carry the impressiveness for which it is noted.

After all, the Panhellenic Council's chief work is to see that the Panhellenic dances receive the distinction of being the outstanding student social functions of the year.

May that reputation continue.

Elsewhere

By DAVID FLOWERS

At the University of Alabama a "Spirit Committee" has been formed. This committee was formed for the purpose of bringing out more of the college spirit at football games.

Again in the Tulane paper one notices the editorial on the lack of support given to its football team.

At Southwestern, the lack of school spirit is as evident as it is at Tulane. The game played against Mississippi State was notable for the silence among the students. The cheer-leaders, it seems, were the only ones that had any "pep" at all. Yet, we wonder why Southwestern is not given more support at its games by the people of Memphis and the Tri-States. It is self-evident, however, for the "pep" and the cheers and the noise are at least half of the fun in going to a football game. Perhaps the reason why there is no enthusiasm is because the team has won only one game this season. This should be no reason at all—the students should back the team whether winning or losing—even more so when they are losing for it is then that they really need support. No one gets anymore out of a thing than what he puts into it, so let's back the team and get a little school spirit back again.

Dr. Ralph R. Winn, City College of New York, instructor of philosophy, claims that the students who sleep during lectures retain the greatest amount of information being disseminated. (The last word is not of my choosing.) It would be well to ask Dr. Baker if that is true in the case of science with the student being Joe McCoy.

A fine of ten dollars or ten days in jail is the sentence which can be imposed upon a co-ed at the University of Minnesota caught wearing a fraternity pin. A recent survey at Harvard revealed that the average student carried 22c. Chess is obligatory at all Soviet colleges. At Lehigh the frosh must wear black socks and ties.

THE FRATERNITY LEACH

WITH "rush week" now only a memory, the fraternity pledge is beginning to form his habits of conduct for his college life. May he not allow himself to be classed as a large number of his older fraternity brethren—as nothing more than a "fraternity leach."

This type of student is one who comes to college with but one aim and that to "make" a fraternity. After he has made one he is perfectly satisfied. The fraternal parasite does absolutely nothing. He has no time for activities—there are too many good shows to attend. His studies worry him only to the extent of his passing them. He gives nothing to his fraternity but expects the fraternity to give him everything. The only honors he receives are those which he gets purely and simply through his fraternity membership.

He is a non-entity. In other words, he takes everything from the fraternity and gives nothing in return. Instead of helping his chapter, his actions usually bring disgrace to the group.

He is a hypocrite. He delights in dominating the freshmen, and takes great pleasure in telling them what they must do to help the fraternity. He makes a fine first appearance through his dress and his hearty attitude. But after "rush week" he is hardly ever heard except when mid-semester grades are posted.

His membership is a curse to any fraternity. The sooner members and pledges realize this truth the sooner fraternity membership will carry something besides a social stamp.

—THE AUBURN PLAINSMAN

Poet Scorer

If you can keep your Tri-Delt, When Johnson is around, If you can wangle dates with Reames When our hero is in town, If Bruner even looks your way Without a defeated frown; Then you're better than we thought you were, My friend, you're holding ground.

Potter's Clay

(Dirt)

This week, boys and girls, this column will be devoted not to the latest exploits of that Don Juan of the campus, Colonel Duff Gaither, but to a letter received during the week which might prove interesting to most of you.

The barb-wire bath tub for the "best letter of the week" goes to Snooty Susie, who so capably represented the "Log Cabiners" at the Halloween party given the past week-end by the "Babe Black Club." May we quote?

"Dear Press Agent:

Well, I've just gone through the thrill of representing "Duffee's Girl Friends" at the party of another so-called campus organization. I didn't want to go, but Duff told me that we needed those girls' votes this year, and that I'd just have to grin and bear it. Well, I've been made the goat before so I plastered on that possum grin that I learned from Maxey, and prepared to bear it.

I didn't get there until ten-thirty, but I had a good excuse prepared—us panel-pushers are good at that—for being so late. I was there with bells on, but let me tell you, the noise I made didn't even cause notice. Why? Because St. Nick's successor and Scott's girl friend were doing an original "Stock market dance" that had the whole house shaking. Oh, well, when the cat's away the mouse will play, and the football team was in Chattanooga.

They finally tired of this (they were the last ones in so doing and I turned my inquisitive eyes around the room in search of further diversion. I couldn't help noticing that the AERDB boys managed to get around to the Brother's girl-friend, the "green-eyed go-getter," at least once per piece.

"The Short Man" was trying to call everyone's attention to the fact that the SAE's had 100 per cent pledge representation by having the dear little fellows sing aloud every song. One or two of them seemed quite embarrassed. Finally the "Moustrap" put a stop to this method of illumination.

Bill called some kind of lead-out, but all the girls sat back until the "Babe" gave the signal, whereupon the girls assumed moonstruck expressions while the orchestra played "our sorority song." The high-light of this was the "Savannah Stomp," done by "the last of the Davises" and that boy they call "Blind Annie."

By this time the boys were all tucked out, but that gal whose last name is the same as a brand of ink shouted "I yam going to invite you-all over to my house for a mid-night duck dinner, you bring the ducks."

I couldn't imagine doing this, so I murmured something about the party having been just too divine, and hastened out to clear my befuddled head by deep draughts of invigorating fresh air.

P. S.: The best feature of the party was the absence of "J. C." Webb.

(Note: Any letters of interest will be welcomed by the driver of this back. Just address them in care of

this department and they will be entered in the contest for the cut-glass towel to be awarded in the very near future.)

GALA OPENING!

College Rendezvous

TOMORROW, IT'S BIRMINGHAM-SOUTHERN

TONIGHT, IT'S THE CLARIDGE

Come On, Everybody Will Be There!

CLARIDGE HOTEL

Interviewing The Faculty

By HARVEY HEIDELBERG

Long before the advent of the broad "a," Professor Marion McQueen achieved his bachelor's degree cum laude at Southwestern, and today he is more interested in the pursuit of knowledge than in the too often eloquent emptiness of Culture with a capital C.

Anyone who has ever passed the west end of Palmer Hall during his classes could probably guess that Dr. McQueen has a zest for life as well as for learning. He is one of the most vigorous lecturers in the college, and these lectures get results. Students know him as a successful teacher, although in his years of advanced study and research he has spent little time with methods of teaching. He reflected, "There must first be the desire, then absolute familiarity with the subject, and the method of putting it across should come naturally."

Attended Tate School

"The Tate School, my prep school in Shelbyville, Tenn., probably uncovered a first interest in mathematics, although my early experiences in plane geometry were none too happy," he declared. Also, the personality of his instructors had much to do with making the subject attractive. Dr. McQueen seemed to think, "At S. P. U., Dr. Dinwid-

die encouraged my liking for the science." When asked about Southwestern during the time of his class of 1919, he replied, "We had a complete enrollment of about seventy-five students."

A year of teaching at Chamberlain Hunt Academy in Port Gibson, Miss.; training at the Field Artillery Officers' Camp in Louisville during the war; and a session as instructor back at Southwestern busied him before going to the University of Wisconsin, where he taught in the College of Engineering and managed a master's degree besides. Dr. McQueen regards graduate work as a stimulating though rigorous experience. "One has to walk the chalk line, show that he has motives other than the mere wanting of a degree," he observed.

Math Should Be Related

Of his interests in biology and chemistry, the professor declared: "There should be a knowledge of these other sciences for their relation to mathematics, as far as I am concerned. For instance, in physics we have the law of gravitation, although with mathematics Einstein has shown that this is only an approximation of a real, more comprehensive law. Then, the discovery of imaginary numbers, as 'i' or the square root of minus one, is linked with the theory of electricity.

When the work of more routine tasks is over for the day, Prof. McQueen hies himself home to do more absorbing work as a scholar in higher mathematics. An article to be published in the next issue of the Transactions of the American Mathematical Society will be "A Projective Generalization of Metrically Defined Associate Surfaces." To the layman this probably means little, although for those who know it, is something added to the ever-growing permanent findings of a pure science. In discussing the field of mathematics, he said: "The mathematician is not interested in application; his is abstract work."

In 1926 a year's leave of absence

was granted for Prof. McQueen to complete his doctorate residence requirements at the University of Chicago. Since then he has been with the College of the Mississippi Valley, not only as Professor of Mathematics but also as Editor-in-Chief of the Southwestern Alumni Magazine. He finds time also for his memberships in Gamma Alpha, Sigma Xi, ODK, the American Mathematical Society, the American Association of University Professors, and as director in Arkansas, Alabama, Tennessee, and Mississippi for the national Alumni Council.



"NAT" and "ELEC"

Nat and Elec are our symbols of team-work in service, representing the combined services of Gas and Electricity rendered by this Company.

This Company considers itself as partners with the people and continually strives to labor as a team-mate with the public in community progress.

MEMPHIS POWER & LIGHT CO.

Electricity used for lighting and appliance operation; and natural gas used for cooking, water heating and house heating in the homes in Memphis cost our customers less than electricity used alone for the same purposes under any known electric rate.

Good Taste!



Luckies

They Taste Better

The clean Center Leaves—these are the mildest leaves They Cost More

"It's toasted" Your throat protection—against irritation—against cough

You'll find every Lucky firmly round and fully packed with long golden strands of fine tobacco—only the clean center leaves—these are the mildest leaves—they cost more—they taste better.



CHAPPEL STARS AS BOBCATS DOWN FREED-HARDEMAN TEAM

Morton's Passes Good For Touchdowns; Second Win

Mixing passes with a good running attack, Southwestern freshmen scored a 20 to 0 victory over Freed-Hardeman at Fargason Field.

The heavy freshman line was too much for the Freed-Hardeman defense and the Bobcat forwards opened numerous holes for the fast-moving backs.

Eight plays later they scored on a reverse with Chappell carrying the ball around his own left end for five yards to score standing up.

The Lions outplayed the Southwestern team in the third period and made their lone scoring threat early in the fourth quarter.

The Bobcats made their final score after an exchange of kicks and a 35-yard march down the gridiron, climaxed by an 11-yard end run by Chappell for the score.

Line-up: Fr.-Hard. Posi. Bobcats Weeks (c) L.E. Hammond Donoho L.H. Hillis Lindle L.G. Maury Melton C. Patterson Hopper R.G. Freeman Williamson R.T. Ray (c) Richardson R.E. Hassell Dugger Q.B. McClendon Hoggett H.B. Chappell Chalk H.B. Morton Boaz F.B. Nickells

Score by periods: Bobcats 13 0 0 7-20 Freed-Hardeman 0 0 0 0-0

Scoring: Touchdowns, Bobcats: Chappell 3. Points after touchdown: Chappell (placement); Nickells (line plunge).

Substitutions—Bobcats: Pitt, Prewitt, Faulhaber, Jennings, DePrater, Payne, Pietchnow, Cooney.

Freed-Hardeman—Heath, Mainard, E. Oakley, Wimberly, Parks, Ruth, Graham.

Officials—Hammond, referee; Lloyd, umpire; Hammond, head linesman; Owen, field judge.

I think that I shall never know just why Duffee went Chi O;

A frat where Femmes are sweet and slow(?)

No matter how fast you want to go, So Belcher, Cavett, Sledge and Reid All keep Don Juan down to their speed.

Boys are made by girls like those But no one yet has made Chi O's.

Football Standings

Table with columns: S. I. A. A., W. L. Pts. Op. Rows include West Kentucky, Loyola, Furman, Miami, Union (Ky.), Centenary, Millsaps, Louisville, Citadel, Rollins, \*Miss. Teachers, Murray, Transylvania, Louisiana Normal, Centre, Miss. College, Howard, Middle Tenn., Presbyterian, Georgetown, Southwestern (La.), Wofford, Mercer, Southwestern (Tenn.), Erskine, Louisiana Tech, Stetson, Newberry, Tennessee Tech, East Kentucky, Louisiana College, Morehead.

SOUTHEASTERN

Table with columns: W. L. Pts. Op. Rows include Alabama, Tulane, Louisiana State, Kentucky, Vanderbilt, Tennessee, Mississippi, Florida, Georgia, Mississippi State, Sewanee, Georgia Tech, Auburn.

SOUTHERN

Table with columns: W. L. Pts. Op. Pt. Rows include Duke, Wash. & Lee, Virginia, N. C. State, Clemson, Maryland, North Carolina, South Carolina, V. P. I., V. M. I.

SOUTHWEST

Table with columns: W. L. Pts. Op. Pt. Rows include Arkansas, Rice, Texas Christian, Texas A. & M., Sou. Methodist, Texas, Baylor.

Remaining Games On Lynx Schedule

Table with columns: Team, Home, Date. Rows include Birmingham-Southern, University of Kentucky, Millsaps, Union, Spring Hill.

Four Big Tilts On Dixie Gridirons

Four Southeastern Conference games, involving the three leading teams, share attention with two inter-sectional duels on Dixie's gridiron program this week.

While the competition appears at a glance incapable of offering such heated warfare as took place last week when Alabama trampled Georgia and Louisiana State blasted Vanderbilt's ambitions, an attractive array of contests is in store for Southern football fans.

As the Southeastern representatives move into the November campaign, the Crimson Tide and Tulane paced the conference standings with four victories each, with Louisiana State ranking next thru two triumphs in as many starts.

Alabama, outstanding thus far among the limited group of contenders and prime favorite to defend the title it won in 1933, has the toughest assignment of the trio. The Crimson Tide invades Lexington for a fray with Kentucky, conqueror of Auburn, 9 to 0, in its Southeastern debut last Saturday.

The Tuscaloosa eleven, however, considering its 26 to 6 rout of Georgia, should have little trouble surmounting the Wildcat opposition.

L. S. U. vs. Mississippi State The L. S. U. Tigers exhibited worlds of power in trouncing the Commodores by a one-sided 29 to 0 count and it's doubtful if any fear accompanies their approaching engagement with Mississippi State at Baton Rouge Saturday night.

The same situation surrounds Tulane's scheduled bout with Mississippi at New Orleans. The Green Wave, altho a bit sluggish, defeated Georgia Tech's rehabilitated forces, 20 to 12, and displayed a flashy offensive.

Chief interest in the inter-sectional battles centers on Tennessee's clash with Fordham at New York. The Volunteers, blotted out of the conference competition a week ago by Alabama, struck back with typical force to wipe Duke's Blue Devils from the undefeated and untied list by a 14 to 6 score Saturday in an interconference test.

The Rams, smothered by Southern Methodist, 26 to 14, are likely to find Tennessee's squad just about as tough. Vanderbilt journeys to Washington to play the George Washington eleven.

The Southern Conference sends two teams to the Southeastern for

MOCCASINS WIN FROM LYNXMEN

After holding the Moccasins of Chattanooga for three quarters, the Lynx were defeated 20-7 on a wind-swept field in Chattanooga Saturday. Ring and Watland, two sophomore backs for the Moccasins were the main causes for the Lynx defeat.

Gartside scored the only touchdown for the Lynx on a pass from Jones. Elder's placement for extra point was good.

The Lynx led until the last quarter when the Moccasins scored two touchdowns on passes. Lloyd, White and Davis played an air-tight defensive game. Gartside bore the brunt of the offense.

Table with columns: Team, Posi., Chatta. Rows include Barnes, White, Givens, Lloyd, Williams, McCollum, Davis, Elder, Gartside, Jones, Houts.

Officials: Referee, French (Army); umpire, Campbell (Oglethorpe); head linesman, Richardson (Georgia); field judge, Emerson (Sewanee).

Substitutions: Southwestern—Barefield, Mays, Williams, Givens, Huckabee, Chapman, Haygood, McDonald, Crosby, Mays, Rasberry, Dunlap. Chattanooga—Shell, Hornsby, Payne, Irvine, Skillern, Ellis, Grainger, Burnette.

FIFTEEN FRESHMEN ANSWER CAGE CALL

Fifteen freshmen answered Coach Miller's call for candidates for the Bobcat basketball team. Practice will begin next Monday. The Bobcats are going to represent the Trinity Methodist Church in a city league that is now being formed in Memphis.

A schedule which will include freshmen games from Ole Miss, Mississippi State, Millsaps, and Mississippi College is being made out now.

All freshmen who have had some experience in basketball are urged to come out.

BASKETBALL TO BEGIN MONDAY

Sigma Nu Is Defending Champ; Letter Men Not Eligible

Beverly Buckingham, intra-mural sports director, announces that inter-fraternity basketball will begin Monday, November 19.

Teams are to represent each of the fraternities and the non-fraternity group. Only boys who have not made their letters in a major sport will be allowed to compete.

Last year the Sigma Nu fraternity won the championship by defeating the ATO's two games. The Sigma Nu's and the ATO's defeated all teams and had to play off for the championship. The same kind of tournament will be held this year.

THIRTY-ONE TEAMS UNBEATEN, UNTIED

Thirty-one unbeaten and untied football teams remain throughout the country.

Seventeen colleges fell from the charmed circle of unbeaten and untied elevens over the week-end.

Six schools—Dartmouth, De Pauw, Ohio Northern, Tufts, Ithaca and Panzer—have not been scored upon as yet.

The unbeaten teams:

Table with columns: Team, W. L. Pts. Op. Rows include Syracuse, Michigan State, Ohio Northern, Chicago, Upper Iowa, est Res., Illinois, Tufts, Miami (Fla.), Blue Coll., Wash. (Md.), Union (Ky.), Ithaca, Utah State, U. of Washington, Panzer.

ONE DOLLAR FREE! TERRACE FOUNTAIN

Is sponsoring a drawing. The winner is to receive \$1.00 in merchandise. Sign below and take this Ad to TERRACE FOUNTAIN'S Drawing Wednesday and the winner will be posted on the door at "THE FOUNTAIN."

Name \_\_\_\_\_

WARNER THEATRE

Preview Friday Week Starts Saturday

"HAPPINESS AHEAD"

With DICK POWELL JOSEPHINE HUTCHINSON And a Cast of Stars.

Added: "Hail Columbia" Cartoon: "Beautiful Dames"

NEW STRAND BEST SEATS IN MEMPHIS

THURS., FRI.—2 DAYS ONLY "The Line Up"

With WM. GARGAN, MARIAN NIXON, NOEL FRANCIS, JOHN MILJAN

STARTS SAT., NOV. 3RD George O'Brien in Zane Grey's

"DUDE RANGER"

STARTS WED., NOV. 7TH "Now and Forever" With SHIRLEY TEMPLE

the Wellman Process does this —

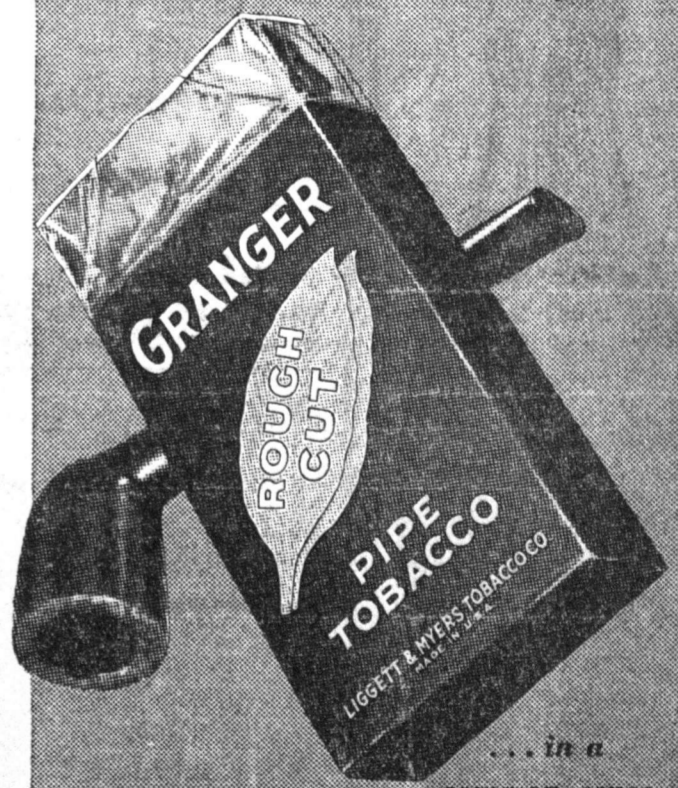
..it makes the tobacco milder

In the manufacture of Granger Rough Cut Pipe Tobacco the Wellman Process is used.

The Wellman Process is different from any other process or method and we believe it gives more enjoyment to pipe smokers.

- ... it gives the tobacco an extra flavor and aroma
... it makes the tobacco act right in a pipe—burn slower and smoke cooler
... it makes the tobacco milder
... it leaves a clean dry ash—no soggy residue or beel in the pipe bowl

LIGGETT & MYERS TOBACCO CO.



... in a common-sense package—10c

We wish in some way we could get every man who smokes a pipe to just try Granger

GRID PICK CONTEST

Place an (X) beside the team you pick to win, cut out the list and put it in the grid pick box in the Supply Store. Each person is allowed one set of guesses. Everyone is eligible except The Sou'wester staff.

All guesses must be in not later than 12 o'clock, Saturday noon.

Grid pick contest table with columns: Team, vs., Team. Rows include Southwestern vs. Birm.-Sou., Army vs. Illinois, Auburn vs. Duke, Baylor vs. T. C. U., Carnegie Tech vs. N. Y. U., Centenary vs. Ouachita, Georgia Tech vs. No. Carolina, L. S. U. vs. Miss. State, Navy vs. W & L, Pitt vs. Notre Dame, Princeton vs. Harvard, Purdue vs. Chicago, Texas vs. S. M. U., Stanford vs. UCLA, Ole Miss vs. Tulane, Alabama vs. Kentucky, Texas A&M vs. Arkansas, Florida vs. Georgia, Michigan vs. U. Minn., Fordam vs. Tennessee, Vanderbilt vs. G. Washington, Yale vs. Dartmouth.

Name \_\_\_\_\_



# Plan Formulated To Show Worth Of Fraternities — National Inter-Fraternity Group Seeks To Prove Constructive Force Of Greeks

## 'American Campus' Views National Frat Council Meeting

Concerted action to prove to colleges, educators and the public that American fraternities are a constructive force in academic life was taken at the recent joint meeting of the executive committee of the National Inter-Fraternity Conference and its Educational Committee in New York.

A new working formula, in the form of fraternity criteria and intended to establish closer co-operation between fraternity and educational institution, was set up by the conference. The criteria are the first formal declaration of the conference in regard to definite standards of responsibility of the fraternity to colleges and universities. The new platform declares that the fraternity is under obligation to encourage the most complete personal development of its members, intellectual, physi-

cal and social.

### Adopt Standards

The standards, adopted at a joint meeting of the executive committee and six deans of the educational advisory committee are:

"We consider the fraternity responsible for a positive contribution to the primary functions of the colleges and universities, and therefore under an obligation to encourage the most complete personal development of its members, intellectual, physical and social. Therefore we declare:

1. That the objectives and the activities of the fraternity should be in entire accord with the aims and purposes of the institutions at which it has chapters.

2. That the primary loyalty and the responsibility of a student in his relations with his institution are to the institution, and that the association of any group of students as to a chapter of a fraternity involves the definite responsibility of the group for the conduct of the individual.

3. That the fraternity should promote conduct consistent with good morals and good taste.

4. That the fraternity should create an atmosphere which will stimulate substantial intellectual progress and superior intellectual achievement.

5. That the fraternity should maintain sanitary, safe and wholesome physical conditions in the chapter house.

6. That the fraternity should inculcate principles of sound business practice both in the chapter finances and in the business relations of its members.

Six deans, who make up the educational advisory committee will carry on an experiment of applying these fraternity criteria on their respective campuses. The group includes Dean William L. Sanders of Ohio Wesleyan University, Dean H. E. Lobdell of Massachusetts Institute of Technology, Dean James W. Armstrong of Northwestern University, Dean D. H. Gardner of the

University of Akron, Dean W. E. Speight of Swarthmore College, and Dean F. S. Turner of the University of Illinois.

The drive to establish this new working formula in the minds of educators and fraternity men is on in full force. The executive committee believes that the criteria will stimulate all fraternities into action and prove to educators, administrators and the public that the fraternities will meet the challenge to become an integral part of the educational system.

### Vote Approval

Approval of the principle of extending provisions of the Home Owners' Loan Act of 1933 so that loans may be made to fraternity non-profit corporations and a resolution to urge the retention of section 1 of schedule A of the code of fair competition for the precious jewelry producing industry were also voted at the joint meeting of the executive committee of the National Inter-Fraternity Conference

and the educational advisory committee.

The former provides that loans may be made to educational, charitable, fraternal or non-profit corporations, having a value not exceeding \$50,000, and which homes are used solely for housing members of such corporations.

### Pass Two Resolutions

Two other resolutions of major importance were unanimously accepted at the meeting of the executive committee. One states that the committee urges the acceptance of the principle that before establishing a chapter in any educational institution, member fraternities should secure the formal approval of the education institution in question. Secondly, the committee voted that, in selecting its delegates to the National Inter-Fraternity Conference, each member fraternity should choose as one of its delegates a person who is actively engaged in educational work.

## Stewart Hall

Stewart Hall lays claim to the title of "Home of the Scholars" this year along with the generally accorded distinction of being the only men's dormitory. "The Hall Without a Sphinx" is the proud cognomen laid claim to by Stewart. We have at last found some freshmen who will study without a constant use of the board, and it is really a relief to some of the old heads such as White and Wright, to be able to spend the night studying without any interruptions.

The Stewart Hall telephone is still in functioning order, but so far we have failed to receive anything more important than a long distance call from Polly to tell Nell good night, and a few calls from the hospital nurses to tell Flossie Ray anything but good night.

It looks now as if the Stewart Scholarship reward will be fought out between Gus Pitt and Richard Parker. Each has a perfect average—five out of five failed. Freshman Hillis is apparently preparing for trouble. He has been consistently courting the doctor's daughter since he arrived in town.

## Robb Hall

This collection didn't exactly scatter to the four winds last weekend, but a favored few took nice trips. The one who flew east was Leon Jones. He went to Nashville to see Huey Long who had the old capitol popping merrily. Harvey Heidelberg and Reed Brock motored down into Mississippi, Harvey to his home and

Reed to Shelby for reason unknown. What will we ever do with Freshman Braddock who looks for the girls so intently that he splatters himself all over Robb's front door mat?

Robb regrets to announce that James Powell has withdrawn from college. Good luck to him.

Someone said that Sherman Kelly was a big mouth, but he only gets noisy when he answers the phone.

## Calvin Hall

Dorsey Barefield has at last come into his own. We thought that he was going to succeed Graeber but as soon as Graeber discovered his intention, he put on steam and left Dorsey far behind. As a detective, however, Dorsey has no peer. He pulled the best trick of the year on Dick Dunlap in Chattanooga. If you want to hear all about it ask Dorsey, but Dunlap's only reply is "NUTS."

We are sorry to remark that Raferd Herbert does not seem to be fairing so well on Madison. Don't get discouraged Raferd.

Ed Atkinson is a very quiet and modest boy. "Quite a break for him that he didn't inherit some of his uncle's characteristics." The only thing is how he puts up with the clarinet that his room-mate, Watts, is continually blowing. Next to Weddington's banjo, it is the worse yet.

## Sport Scribble

It's a common belief that football players are dumb. This is nothing more than a wrong impression. After considering what they have to do in addition to studying, it's a wonder that their grades are as good as they are.

In the first place, at least three hours a day are spent on the field practicing. This makes a total of about 18 hours a week. Think of the themes that could be written in that time. Many of the trips take two days. Besides that, the regular student studies at night. After practicing three hours you can be sure that the football player could stand up.

Still, some of the best grades are made by members of the football squad. Next report period take a look at Benton's card, or Mac Elder's or John Barne's. Jack Crosby is reading for honors.

We can appreciate the fact that the professors here grade according to merit. In many schools, the football players seem to think they are getting a raw deal. Some students even hesitate to wear their letters to class because they are afraid that the professor will think he puts more time on sports than on studying.

In each of the four games the Lynx have played, the opponents have had cause to remember Moon White. In each, Moon dealt out more than his share of misery besides playing air-tight generally. This is Moon's last year on the varsity and

he seems to want us to remember him.

"It was the best coached team I've seen this season," said the Freed-Hardeman coach. And the results showed he wasn't passing on an idle compliment. The Freshmen knew what they were supposed to do and they did just that. That means that they knew the signals perfectly. The blocking was particularly good. The quarterback mixed his plays enough to keep the opponents guessing, and Nickles' ball carrying was a pain to Freed-Hardeman tacklers. The thing about Nickles is that he makes the tacklers tackle where he aint. The passing combination of Morton to Chappell is something pretty to see. Believe me, with this set of backs coming up and with Gartside already with one year's experience, the Varsity should go places next year.

The Lynx are preparing for Birmingham-Southern. One or two new

plays look good. Now in the past, the opponents seemed to know what the Lynx were going to do before they did it. This was especially true in the Sewanee game. Students will talk among themselves about some new play the varsity will use. Unconsciously they drop some hint. This some how gets around to the students on the other campus where the coach picks it up. Coach Haygood says that he gets much valuable information by simply talking with the students here, especially if the students are from the vicinity of the opposing college.

JOHNNY QUANTHY.

Maybe LSU will receive an invite to journey to the West Coast, who knows. With the showing the Louisianians made against the Commodores as an example of their strength, this shouldn't be out of

the question.

After taking on five non-conference foes, the Kentucky Wildcats began its Southeastern Conference campaign by trouncing Auburn. Kentucky takes on Alabama this weekend and should make a good showing. Not wishing them any bad luck, but Alabama has a habit of running up a long injured list—for their opponents. Don't let this make you think that your job will be any easier, Lynx Cats.

Not to be mentioning LSU, but we clip the following from David Bloom's column in the Commercial: "Huey Long told the world that he was repaying a debt to Tennessee last week, but what is he going to do about repaying his debt to Mississippi. "Five of the starring LSU team hailed from South Mississippi. They

were: Abe Michal, McComb; Buck Brown, Laurel; Jess Fatheree, Jackson; Osborne Helveston, Biloxi; and Walter Sullivan, Hazelhurst. It might be interesting to note that four of these men played in the same prep school conference, all graduating in the same year."

Thirty-one teams still remain on the nation's undefeated list. They must have some of that stuff that Dr. Stoves was talking about Wednesday morning in chapel. Where do they dish it out???

TOMMY FULLER.

**FOR REAL VALUES**  
**In High Grade Suits & Overcoats**  
 SHIRTS, UNDERWEAR & HOSE  
 For the Young Man—Come to the  
**GOLDEN EAGLE**  
 SELLING OUT SALE—118 Madison Ave.  
 Articles Sold At Almost 1/2 Original Price

**GET 'EM, BIG MAC**  
 Send Your Laundry and  
 Cleaning to  
**GLOBE**  
 LAUNDRY &  
 CLEANERS  
 BIG MAC, Campus Representative  
 SUITS CLEANED . . . 65c  
 SUITS PRESSED . . . 25c

**It Hits the Spot**  
 WITH A  
**BANG!**  
**ANGEL FOOD**  
**ICE CREAM**  
 Served in the  
**College Store**  
 Visit Angel Food After  
 the Dance—  
 Poplar Pike

**ORPHEUM**  
 NOW  
**Gigantic Stage Show**  
**"NEW YORK FOLLIES"**  
 FEATURING  
**SIBYL BOWAN**  
 6 Star Acts  
 On The Screen  
**"CHEATERS"**  
 WITH  
**BILL BOYD**  
**DOROTHY MacKAILL**  
**JUNE COLLYER**

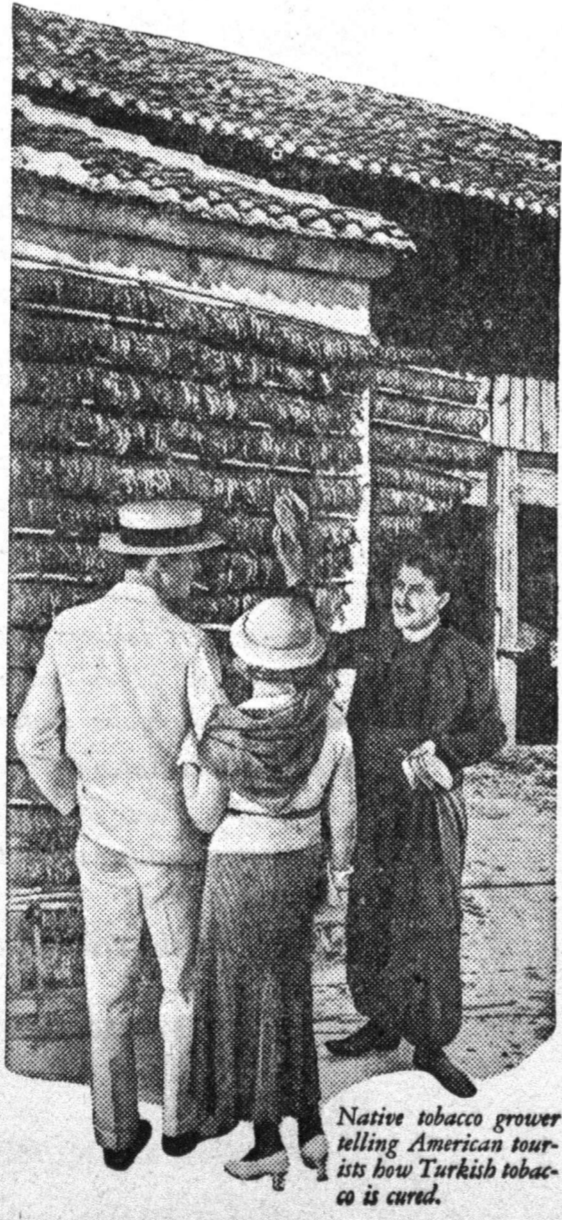
**LOEW'S STATE**  
 STARTS SAT.  
**"THE MERRY WIDOW"**  
 WITH  
 JEANETTE MacDONALD  
 MAURICE CHEVALIER  
 MICKEY MOUSE  
 in  
**"MICKEY PLAYS PAPA"**

**LOEW'S PALACE**  
 Starting Saturday  
 The Nautical Musical Comedy  
**"Transatlantic Merry-Go-Round"**  
 With  
**JACK BENNY**  
 Radio's Famous Comedian,  
 and  
 BOSWELL SISTERS  
 FRANK PARKER  
 NANCY CARROLL  
 GENE RAYMOND

VISIT  
**Gilmore Barber**  
 1857 MADISON  
 Shop HAIR CUTS  
 40c

**The Pause That Refreshes**  
  
 PHONE 6-5600  
 Factory at Fourth at Washington

# Let's find out why Turkish tobacco is so important to a good cigarette



Native tobacco grower telling American tourists how Turkish tobacco is cured.

On the sunny slopes of Smyrna . . . in the fertile fields of Macedonia . . . along the shores of the Black Sea . . . grows a kind of tobacco that is different from any other tobacco in the world.

THESE Turkish tobaccos are the only tobaccos of foreign cultivation that are used to any great extent in making American cigarettes. Turkish tobaccos are famous for their spicy aroma, and a blend of the right kinds of Turkish tobacco with our own home-grown tobaccos is better than any one kind used alone.

In Chesterfield we balance mild, ripe tobaccos grown in this country with just the right amounts of the right kinds of Turkish.

It is by blending and cross-blending these different tobaccos that we make Chesterfield the cigarette that's milder, the cigarette that tastes better.



Turkish tobacco hung in the open air to be cured.

On the air—

MONDAY ROSA PONSSELLE  
WEDNESDAY NINO MARTINI  
SATURDAY CRETE STUECKGOLD  
KOSTELANETZ ORCHESTRA AND CHORUS  
8 P. M. (C. S. T.)—COLUMBIA NETWORK