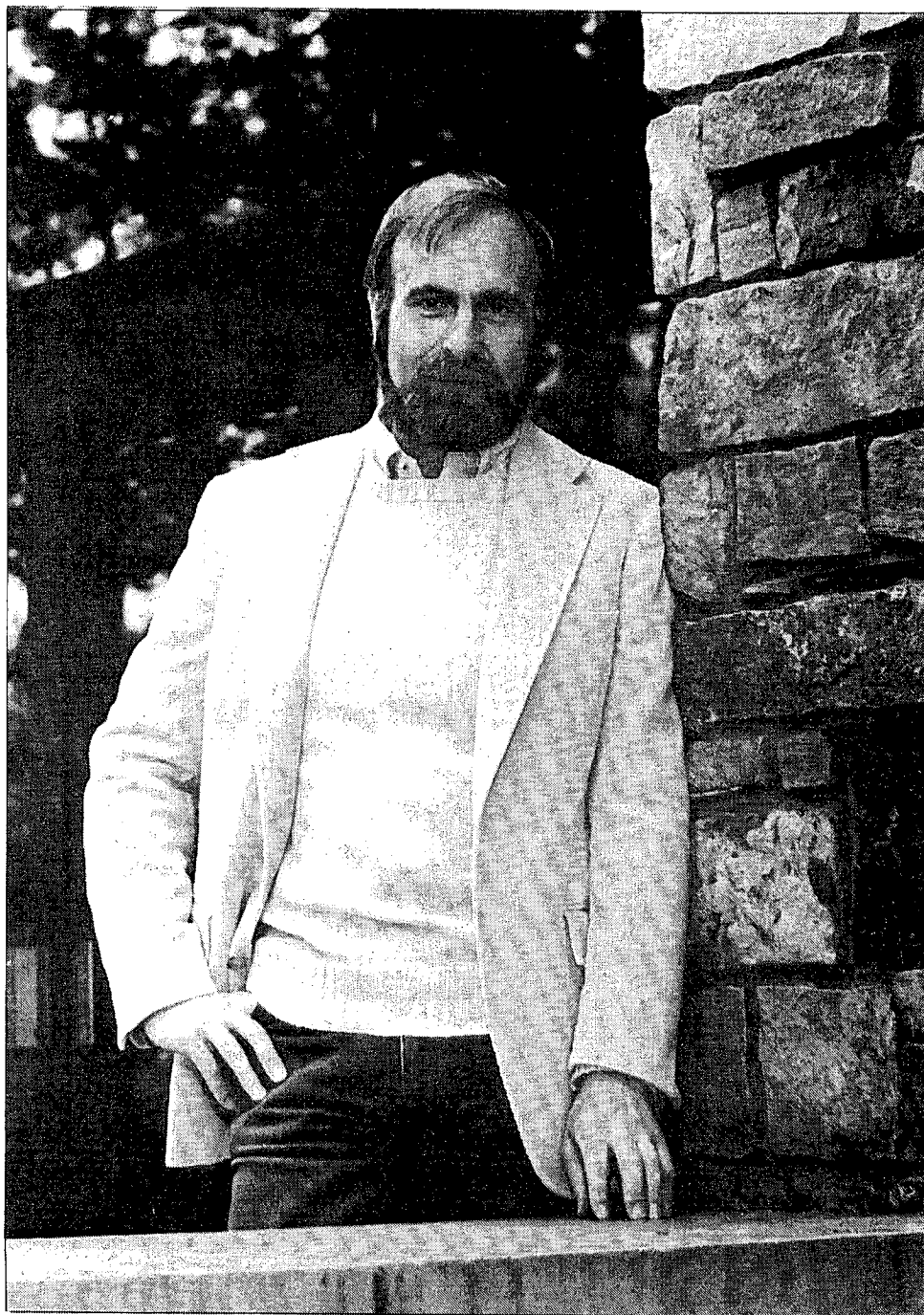


McCoy Theatre
The Harry B. McCoy Visiting Artists Program
RHODES COLLEGE
present

Love's Labour's Lost

May 16-19; 23-26, 1985.



Gavin Cameron-Webb, Guest Director, 1984-85 McCoy Visiting Artist

The Harry B. McCoy, Jr. Visiting Artists Program

The Harry B. McCoy, Jr. Visiting Artists Program welcomes Gavin Cameron-Webb, former director of the Boston Shakespeare Company. Mr. Cameron-Webb is completing a months residency at Rhodes College as guest director of "Love's Labour's Lost."

Disillusioned with his early career in documentary films, Cameron-Webb came to the United States from Britain and enrolled at Ohio University to study acting. He graduated with an M.F.A. and has since made a name for himself as a director. In New York he has directed at the Lincoln Center, the Polaris Repertory Theatre, the Roundabout Theatre and the Theatre at St. Clements. He has also crisscrossed the country directing at the Colorado Shakespeare Theatre, the Virginia Shakespeare Theatre and the Rochester Shakespeare Theatre as well as at various stock and dinner theatres. He has also guest directed at Fordham and Purdue Universities, Ohio University, Southern Methodist University and University of Missouri.

Established in 1978, the McCoy Visiting Artists Program has brought to Rhodes College an impressive variety of performing artists. Among those who have shared their talent and time with Rhodes students are opera's dramatic soprano, Nancy Tatum; noted dancer and choreographer Agnes de Mille; Swedish baritone Hakan Haggard; The New Shakespeare Company of San Francisco; actresses Pat Carroll and Siobhan McKenna; and the Tokoyo Spring Quartet.

The 1983-84 McCoy Visiting Artists Program presented the internationally acclaimed pianists, Paul Badura-Skoda and Alicia de Larrocha.

Endowed by the late Harry McCoy, as Memphis real estate developer who died in 1966, the purpose of the program is to introduce Rhodes students to various art forms and the performing artists themselves. Such an opportunity is seen as an enriching adjunct of the college's liberal arts experience.

McCoy Theatre
The Harry B. McCoy Visiting Artists Program
RHODES COLLEGE
present

Love's Labour's Lost

by

William Shakespeare

Directed by Gavin Cameron-Webb

Set Design Elizabeth McCraven
Costume Design Bette Dale Garner
Lighting Design Laura Canon
Sound Design Tony Lee Garner
Projection Design Brian Maffitt
Choreography Barry Fuller
Assistants to Director Frayna Goodman, Patricia Stephens
Stage Manager Leslie Reddick
Assistant Stage Manager Marty Story
Properties ' Marshall Cheney, Teresa Morrow
Light, Sound, and Projection
Running Crew Katherine Bres, Robyn Draper
and Rebecca Sweet
Set and Lighting Crew Elizabeth McCraven, David Porter,
Lilla Magee, John Warren, Katherine Bres,
Marks Chowning, Karen Coblentz, Kaki
Foley, Claire Foley, Lauren Grasfeder, Valerie
Gray, Elbert Hampton, Debbie Hoemeke,
Janet Holloway, Kenneth Jenkins, Martha
McGeachy, Tracey Meyer, Brian Mott, Katie
Nelson, Carol Oswald, Scott Parker, Penney
Price, Ann Sartwell, John Simonton, Kelly
Tetkoskie, Dena Wilson
Costume Crew Ann Sharp, Lisa Sikes, Marty Storey,
Sara Taylor

CAST

Ferdinand, King of Navarre	Michael Updegraff
Berowne	Brian Maffitt
Longaville	Fred Ramage
Dumaine	Kip Kibbons
Boyet	John Rone
Marcade	Randy Sermons
Don Adriano de Armado	Tony Lee Garner
Nathaniel	Stephen H. Williford
Dull	Mark Lee Stephens
Holofernes	Chris Ellis
Costard	Ray Hill
Mote	Jason Jett
The Princess of France	Kathryn Murphy
Rosaline	Lilla Magee
Maria	Anne-Marie Akin
Katharine	Rebecca Ellington
Jacquenetta	Mary Margaret Guth

PLACE:

Navarre: A small kingdom between France and Spain.

TIME:

Sometime around the turn of the century.

The action takes place in the country house of the king
and an adjoining park.

There will be one 15 minute intermission.

WHO'S WHO

***ANNE-MARIE AKIN** (Maria), a Rhodes College freshman, made her McCoy Theatre debut as Tessa, one of the contadine in *THE GONDOLIERS*. At Harding Academy, she appeared as Eliza in *MY FAIR LADY* and as Cecily in *THE IMPORTANCE OF BEING EARNEST*.

REBECCA ELLINGTON (Katherine) is a senior sociology major who appeared on the McCoy stage as Laurel in last season's *THE CHALK GARDEN* and as Clara Petacci in the studio production of *SUMMIT CONFERENCE*.

CHRIS ELLIS (Holofernes) is, needless to say, one of Memphis' busiest actors, both on and off the stage. His numerous credits include Laertes in *HAMLET*, Marchbanks in *CANDIDA*, Lysander in *A MIDSUMMER NIGHT'S DREAM* and John Tanner in *MAN AND SUPERMAN* at Theatre Memphis as well as the role of Orsino in *TWELFTH NIGHT*. Mr. Ellis is also an accomplished cartoon artist/satirist and literary aficionado who, in his spare time, works at Molly's La Casita.

TONY LEE GARNER (Don Armado) returns to the McCoy stage after a year-long absence, having last appeared in the title role of last season's *SWEENEY TODD*. His directing credits include this season's *BEYOND THERAPY* and musical direction for *THE GONDOLIERS*, *SWEENEY TODD*, *CARNIVAL*, and *CANDIDE*, as well as musicals at Theatre Memphis too numerous to list. His busy schedule as Director of the McCoy Theatre and Chairman of the Department of Theatre and Media Arts leaves him little time for any hobbies other than sleeping and eating.

MARY MARGARET GUTH (Jacquenetta), Associate Director for the Rhodes College Fund, was last seen on the McCoy stage as the widow in *THE TAMING OF THE SHREW*. She has appeared in Germantown Community Theatre productions of *THE LITTLEST ANGLE*, *PORTRAIT IN BLACK*, and *ROMANTIC COMEDY* and Circuit Playhouse's production of *THE WOMEN*.

RAY HILL (Costard), a member of the Theatre and Media Arts faculty and one of Memphis' finest actors, appeared in last season's *YOU CAN'T TAKE IT WITH YOU* and *THE CHALK GARDEN* and played Stephano in the McCoy production of *THE TEMPEST*. His McCoy directing credits include *THE INSECT COMEDY*, *A PHOENIX TOO FREQUENT*, and *SOMETHING UNSPOKEN*. Ray is a veteran Shakespeare actor having appeared as Fluellen in *HENRY V*, Christopher Sly in *THE TAMING OF THE SHREW*, and Sir Toby Belch in *TWELFTH NIGHT* in theatres other than the McCoy. Other roles include Uncle Chris in *I REMEMBER MAMA*, Willie Loman in *DEATH OF A SALESMAN*, and Doolittle in *PYGMALION*.

JASON JETT (Moth) is a sixth-grader who has appeared in *PETER PAN* at Circuit Playhouse, *THE KING AND I* at Gaslight Dinner Theatre, *OUR TOWN* at Memphis Children's Theatre, and in a national commercial for Westinghouse.

KIP KIBBONS (Dumaine) is a senior history major from Cookville, Tennessee. He made his McCoy Theatre debut in the studio production of *THAT'S IT, FOLKS!* His interests outside the theatre include tennis and travelling whenever possible.

BRIAN MAFFIT (Berowne) is a familiar face to McCoy Theatre audiences, having played Archie Kramer in *SUMMER AND SMOKE*, Giuseppe in *THE GONDOLIERS*, Anthony in *SWEENEY TODD*, and Ferdinand in *THE TEMPEST*. He is a senior majoring in Theatre and Media Arts.

***LILLA MAGEE** (Rosaline) is no stranger to the McCoy, having played many starring roles including Nellie in *SUMMER AND SMOKE*, Kate in *THE TAMING OF THE SHREW*, Miranda in *THE TEMPEST*, Mary Warren in *THE CRUCIBLE*, and Essie in *YOU CAN'T TAKE IT WITH YOU*. She is a junior Theatre and Media Arts major.

KATHRYN MURPHY (the Princess of France) is a sophomore English major and a member of the Rhodes College singers. At the McCoy, she appeared as Penny Sycamore in *YOU CAN'T TAKE IT WITH YOU* and Inez in *THE GONDOLIERS*. She is a classical DJ for WLYX.

***FRED RAMAGE** (Longaville) is a junior Theatre and Media Arts major who has appeared in several McCoy Theatre productions. His credits include Lucentio in THE TAMING OF THE SHREW, Henderson in YOU CAN'T TAKE IT WITH YOU, and Bob in BEYOND THERAPY.

JOHN RONE (Boyet) is a Rhodes College alumnus who now works for the Alumni Office. An accomplished actor, his numerous credits at Memphis theatres include roles in ANOTHER PART OF THE FOREST (at the McCoy), THE FLIGHT OF THE EARLS and SISTERLY FEELINGS (at Theatre Memphis) and THE CONSTANT WIFE and MARY, MARY (at Germantown Community Theatre).

RANDY SERMONS (Marcade) appeared in last season's McCoy Theatre production of YOU CAN'T TAKE IT WITH YOU. He is a member of the Rhodes College Singers.

***MARK LEE STEPHENS** (Dull) is a freshman at Rhodes who appeared on the McCoy stage as Ed in YOU CAN'T TAKE IT WITH YOU and Darryl in THAT'S IT, FOLKS! In high school, he played Lysander in A MIDSUMMER NIGHT'S DREAM and Cyrano in CYRANO DE BERGERAC.

***MICHAEL UPDEGRAFF** (Ferdinand, King of Navarre) is a Rhodes College freshman making his McCoy Theatre debut. In high school, he played Paul in BAREFOOT IN THE PARK and Wargrave in TEN LITTLE INDIANS. This fall, he will appear as Smike in NICHOLAS NICKLEBY.

STEPHEN H. WILLIFORD (Nathaniel) is a Rhodes College alumnus who recently portrayed Dr. John Buchanan, Sr. in SUMMER AND SMOKE. His other McCoy credits include roles in THE GONDOLIERS, CARNIVAL, CANDIDE, SWEENEY TODD, and THE TAMING OF THE SHREW. He has also appeared at Theatre Memphis in ANNIE, THE MUSIC MAN, and A CHRISTMAS CAROL. Stevie is a loyal member of every McCoy Theatre strike crew.

***ELIZABETH McCRAVEN** (Set Designer) has been on several production crews and is assistant to the Technical Director/Production Manager. This is her first design for the McCoy Theatre.

*Members of the newly-formed McCoy Company. This company is a two-year program which includes a two-year academic program called "Languages of the Stage," as well as a production program culminating in repertory productions.

McCoy Theatre Benefactors

Dr. and Mrs. Robert R. Llewellyn

McCoy Theatre Sustainers

Mr. and Mrs. Walter Armstrong Edward and Ann Sharp

Dr. and Mrs. Albert McLean

McCoy Theatre Patrons

Dr. and Mrs. Ray E. Curle Margaret Hyde

W. D. Hill Harold Katz

McCoy Theatre Staff

Tony Lee Garner, Artistic Director

Christina Wellford Posson,
Box Office Manager
Kelly Tetkoskie,
Box Office Assistant

Laura Canon,
Technical Director/Production Manager
Lilla Magee, Liz McCraven, David Porter,
Production Assistants

Acknowledgements

Circuit Playhouse
Theatre Memphis
Wilkerson Sound Studios

Hair Design by
Anniece Bradley and Dee Rumble
of Michel Hair Studio