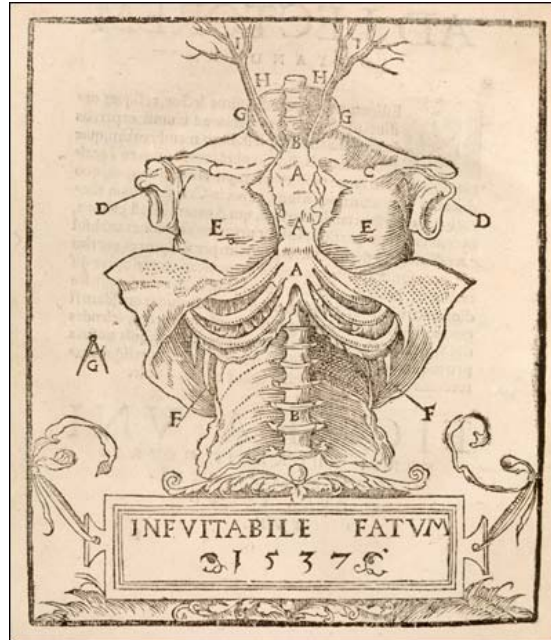


Rhodes College, Art Department
Art 300-01, Life Study
Spring 2005, Clough 312, M/W 2-4:30pm
Professor: Erin Harmon
Email: harmone@rhodes.edu
Campus phone: 843-3826
Office hours M/W 5-6PM or by appointment

ART & ANATOMY PAINTING



TEXT:

How To Draw The Human Figure: An Anatomical Approach,
Louise Gordon, Penguin Books, 1979

COURSE OVERVIEW:

This class gives you the opportunity to explore concepts and techniques in working with the human figure including the structure of the body (interior & exterior), proportion, value, color and content as related to the body throughout the ages in a variety of media.

Expect to work in and out of class. Working in class is a major emphasis but is not the only effort required of you. At least 50% of your assignments for the class will be done as homework.

The class will be based on 14 completed assignments. In some cases, finished assignments will be critiqued in class (*see schedule for these projects and dates.*) Portfolios will be collected at Midterm (Wednesday, March 1) and Final (Monday, May 1st)

CRITIQUES:

This is a studio course so a portion of examination comes through the process of critiques. Critiques will manifest in multiple forms including speaking and writing but most of the time it will involve the entire class in a discussion about how each student fulfilled the assignment. Your constructive participation in critiques and discussions is expected and attendance at critiques is mandatory. This is a major component to the class and your attendance and participation during crits will be factored into your final grade. There will be a variety of critical methods used including one-on-one, roundtable discussions, and written responses. Your overall grade in this class is greatly affected by your participation and performance in critiques. (see grading & assessment for breakdown) **IF YOU DO NOT PARTICIPATE IN CRITIQUES, THE HIGHEST GRADE YOU COULD RECEIVE IS A "C".**

MODEL ETIQUETTE:

For a good portion of the semester we will be drawing from a live nude model. Obviously, missing class on these days is detrimental to your production grade because these sessions can not be made up. Try not to miss class and come prepared. Drawing from a live model is a vital component to any studio experience; a specific synergy is created between artist and model that is not re-created in any other environment. But it is also a privilege.

You will, of course, show the utmost maturity and respect both to the model, myself and your fellow classmates. This includes coming to class prepared and on time, talking in a low voice while the model is in pose, helping to put the model back in pose at the beginning of each drawing session. The studio door will be locked after class begins to preserve the modesty of the model. Please close the door if you need to leave and help to keep the studio windows and blinds closed. Also, please keep cell phones turned off. It is appropriate to move around the room either to find the best possible angle or to observe the progress of your classmates.

PORTFOLIO REVIEWS:

Please submit your portfolios as follows:

MIDTERM: WEDNESDAY, MARCH 1ST:

- Sketchbook assignments
- Drawing from the skeleton
- Contour drawing from the model
- Full value ink drawing from the model with skeletal structure overlay
- Photo archive
- "2 Color" study of hands and feet
- "2 Color" painting from the model

FINAL: MONDAY, MAY 1ST, 5:30PM:

- Toned-Ground Painting from the model
- Toned-Ground Self-portrait from photo archive
- Secret Window Paper Doll
- Full Color Painting from the model
- Full Color Self-Portrait from photo archive
- 1 Organ /System
- Final Assignment

STUDIO:

Please consider this a co-operative space in which you are all part owner. The building can be accessed 24hours a day including over breaks and I hope will become one of your most frequented places on campus. Although this is a great studio, it's limited in space. It is very important that you all work to keep the studio clean and clutter free for a safe & comfortable work environment. You are each responsible for cleaning up after yourselves every time you leave the studio. NOTHING can be left out after class. Each of you will be assigned rack space and a cart & drawer. You may want to bring a lock. Any materials that don't fit in your drawer or storage rack must be taken home so that space is suitable for the next class. DO NOT LEAVE MATERIALS OUT. FOLD AND PUT AWAY EASELS AFTER USE. IF CLEANING UP BECOMES AN ISSUE, YOUR PARTICIPATION GRADE WILL BE EFFECTED.

COURSE OBJECTIVES:

Essential course objectives:

- Learning fundamental principals, generalizations & theories about the figure
- Developing creative capacities (inventing, designing, performing in art)
- Gaining a broader understanding and appreciation of intellectual/cultural activity

COURSE GOALS:

In this class you have the opportunity to:

- Develop observational skills and hand-eye coordination.
- To become familiar with the anatomy of the human body and certain exterior markers that might aid in structure and proportion.
- Use the body in a number of ways to create a diverse artist portfolio

ATTENDANCE POLICY:

Attendance and punctuality is an absolute requirement for successful completion of this course. You must be working in the studio during class time. You will be granted three unexcused absences. On the occasion of your FOURTH unexcused absence, you can expect your letter grade to drop one full point. An expected A- will become a B-. Every unexcused absence after the FOURTH will lower your grade an additional letter. Six or more absences will result in failure. Two tardies/incomplete class days equal one absence. Come to class prepared to work on the assignment at hand, including all supplies, homework and/or research materials. (Should you confront personal problems or illness it is your responsibility to seek me out to discuss the situation.) It is your responsibility to provide a doctor's note stating the illness and legitimizing the date of absence etc., or your absence will be otherwise considered unexcused. A receipt that you saw the doctor is not an excuse.

ASSESSMENT & GRADING:

You will be graded on a combination of the following:

- **40% PRODUCTION:** 14 finished assignments will be graded based on the following criteria:
 - ✓ Quality of craftsmanship
 - ✓ Complexity, Ingenuity & Uniqueness
 - ✓ Progression of skills/techniques over the course of the semester

- **40% PARTICIPATION:** Your attendance, contribution to discussions/critiques and your preparedness each class day, *IE:* did you bring all needed materials to class? Are you ready to work?
- **20% PERSONAL DEVELOPMENT:** Your cumulative progress over the semester as well as your overall commitment & attitude

MATERIALS LIST:

- 9X12 Sketchbook
- 20x26 Drawing Board
- Dual tip black Sharpie marker
- 18x24 Drawing Pad
- Kneaded eraser
- 1 soft graphite pencil
- #10 or #12 bamboo brush
- Higgins black waterproof drawing ink
- 3 watercolor cups
- A jar or plastic cup to hold water
- Assorted acrylic brushes
- Plastic palette knife
- Sta-wet rubber palette OR 12x16 disposable palette paper
- 2 oz acylic paints in the following colors:
 Naples Yellow OR Yellow Oxide
 Naphthol Crimson OR Cad Red Med HUE OR Quinacridone Crimson
 Ultramarine Blue (red shade) OR Phthalocyanine Blue (red shade)
 Titanium White
 One WILD CARD color that you love or hate....your choice
- Satin Glazing Medium
- 4 18x24" canvas boards
- @ least 1 sheet 38x50" Stonehenge paper, gessoed OR 2 pieces 22x30" Multimedia 140lb paper

CLASS CALENDER*

I reserve the right to revise, change or add-to this list in anyway appropriate throughout the course of the semester

Wednesday, January 11: Introductions, syllabus, materials list

Monday, January 16: ~~NO CLASS – MARTIN LUTHER KING OBSERVANCE~~

Wednesday, January 18:

C: SLIDE LECTURE

Sketchbook Assignments

HW: “ “

Monday, January 23:

C: Drawings from the skeleton – “MEASURING, ARRANGEMENT & PROPORTIONS”

HW: Sketchbook Assignments

Wednesday, January 25:

C: Drawings from the skeleton

HW: Sketchbook Assignments

Monday, January 30: CRIT SKELETON DRAWINGS

C: SLIDE LECTURE

Contour drawings from partners

HW: Sketchbook Assignments

Wednesday, February 1:

C: Contour drawings from the **model**

HW: Sketchbook Assignments

INK 6 VALUE SCALE FROM 3 VALUES

Monday, February 6:

C: Ink wash studies from the **model**

Wednesday, February 8:

C: Ink wash studies from the **model**

HW: Skeletal structure overlay

Monday, February 13: CRIT INK WASH STUDIES OF THE MODEL

C: Demo Palette Lay-out & color mixing with studies & photos

SLIDE LECTURE: “THEMES & THE BODY”

HW: Self Portrait Photo Archive

Wednesday, February 15:

C: “2 color” paint studies from the **model** – **HANDS & FEET**

HW: Self Portrait Photo Archive

Monday, February 20:

C: “2 color” painting from the **model**

HW: Self Portrait Photo Archive

Wednesday, February 22:

C: "2 color painting" from the **model**

HW: Self Portrait Photo Archive

Monday, February 27: CRIT "2 COLOR" PAINTINGS FROM THE MODEL

HW: Prepare Midterm Portfolios to be turned in Wednesday

Wednesday, March 1: MIDTERM PORTFOLIOS DUE

C: DEMONSTRATION: TONED GROUND PAINTING

HW: Begin Toned Ground Self Portraits

Thursday, March 2: ARTIST LECTURE, Blount Auditorium, 7pm

Friday, March 3: "Pettest of Pets" OPENING RECEPTION, Clough Hansen Gallery, 6-8pm

Monday, March 6:

C: Toned Ground Painting from the **model**

HW: Toned Ground Self Portraits

Wednesday, March 8:

C: Toned Ground Painting from the **model**

HW: Continue Toned Ground Self Portraits

Monday, March 13: NO CLASS – SPRING BREAK!!

Wednesday, March 15: NO CLASS – SPRING BREAK!!

Monday, March 20: CRIT TONED GROUND SELF-PORTRAITS

C: SLIDE LECTURE: "INSIDE/OUTSIDE" Begin Secret Window Paper Dolls

HW: Secret Window Paper Dolls

Wednesday, March 22:

C: Secret Window Paper Dolls

HW: " "

Monday, March 27: CRIT SECRET WINDOW PAPER DOLLS

C: SLIDE LECTURE : "COLOR"

DEMONSTRATION: 3 color & a wild card mixing

HW: Mixed Color Chart

Wednesday, March 29:

C: Full Color Painting of the **model**

HW: Begin Full Color Self Portraits

Monday, April 3:

C: Full Color Painting of the **model**

HW: Continue Full Color SPs

Wednesday, April 5:

C: Full Color Painting of the **model**

HW: Continue Full Color SPs

Monday, April 10:

C: Full Color Painting of the **model**

HW: Continue Full Color SPs

Wednesday, April 12: CRIT FULL COLOR MODEL PAINTINGS & FULL COLOR SELF PORTRAITS

C: Organ/System Mousetrap Collages

HW: “ “

Monday, April 17:

C: Organ/System Mousetrap Collages

HW: “ “

Wednesday, April 19: CRIT MOUSETRAP COLLAGES

C: FINAL ASSIGNMENT

HW: “ “

Monday, April 24:

C: FINAL ASSIGNMENT

HW: “ “

Wednesday, April 26:

C: FINAL ASSIGNMENT

HW: “ “

Monday, May 1, 5:30PM:

FINAL CRITIQUE

PORTFOLIOS DUE