

# Rhodes College Digital Archives - DLynx

## Men's Basketball Guide 2007

Item Type	Image
Publisher	Memphis, Tenn. : Rhodes College
Rights	Rhodes College owns the rights to the archival digital objects in this collection. Objects are made available for educational use only and may not be used for any non-educational or commercial purpose. Approved educational uses include private research and scholarship, teaching, and student projects. For additional information please contact <a href="mailto:archives@rhodes.edu">archives@rhodes.edu</a> . Fees may apply.
Download date	2026-03-09 09:29:25
Link to Item	<a href="http://hdl.handle.net/10267/19332">http://hdl.handle.net/10267/19332</a>

## 2007-08 SCHEDULE

### NOVEMBER

1	Austin Peay <sup>1</sup>	Clarksville, Tenn.	5 p.m.
16	Westminster <sup>2</sup>	Conway, Ark.	3 p.m.
17	Rhema College <sup>2</sup>	Conway, Ark.	11 a.m.
30	University of the South	Sewanee, Tenn.	8 p.m.

### DECEMBER

2	Oglethorpe University	Atlanta, Ga.	3 p.m.
3	Principia	MEMPHIS	7 p.m.
4	Free Will Baptist	MEMPHIS	7 p.m.
15	Huntingdon College	MEMPHIS	3 p.m.
16	LaGrange College	MEMPHIS	3 p.m.
30	Ferrum College	Lexington, Va.	3 p.m.
31	Thomas Moore College	Lexington, Va.	2 p.m.

### JANUARY

5	Birmingham Southern	MEMPHIS	3 p.m.
8	University of Dallas	MEMPHIS	7 p.m.
11	DePauw University	MEMPHIS	8 p.m.
13	Centre College	MEMPHIS	3 p.m.
18	Trinity University	San Antonio, Texas	8 p.m.
19	Southwestern University	Georgetown, Texas	8 p.m.
25	Austin College	MEMPHIS	8 p.m.
27	Colorado College	MEMPHIS	2 p.m.

### FEBRUARY

1	Millsaps College	Jackson, Miss.	8 p.m.
3	Hendrix College	Conway, Ark.	3 p.m.
8	DePauw University	Greencastle, Ind.	8 p.m.
10	Centre College	Danville, Ky.	3 p.m.
15	University of the South	MEMPHIS	8 p.m.
17	Oglethorpe University	MEMPHIS	3 p.m.
23	Birmingham Southern	Birmingham, Ala.	5 p.m.
28	SCAC Tournament	Conway, Ark.	

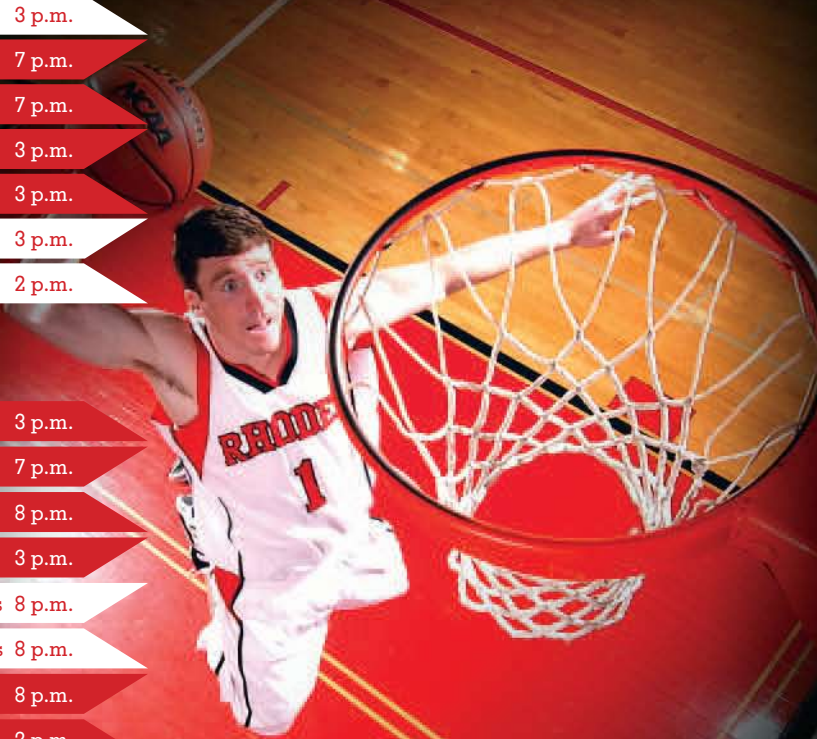
<sup>1</sup> Exhibition Game

<sup>2</sup> Hendrix Classic



Rhodes College  
—1848—

# RHODES



# 07-08 BASKETBALL

## Rhodes College

Rhodes is a small college with a broad world perspective. We expect our students to excel academically, participate in leadership and service opportunities on and off campus, conduct themselves with honor, and prepare for rich professional lives where learning never stops. The educational experience we provide is like no other in the country.

Learning at Rhodes, as at most liberal arts colleges, is vested in the hands of the faculty who choose to be here because they value the experience of teaching and mentoring. They are gifted in the classroom and generous with their time outside it. But learning doesn't stop with scheduled classes and office hours. Our outcomes-focused curriculum impels students to take classroom skills into the community, where they connect knowledge with practice and learn effective leadership through service, internships, international travel and research. And it means returning to the classroom with the discoveries, problem-solving skills, contextualization, engagement and motivation they have gained through their experiences.

In the words of Becky Saleska '06, "The lines between 'academic and extracurricular' have been blurred at Rhodes. Gone are the days of morning classes and afternoon activities. Our classes have collided with the real world. We learn through service and we serve through learning. It's the best kind of education we could possibly have."

## Rhodes Student Body

- 1,725 students, representing 37 states and 2 foreign countries; 77% from outside of TN; 77% live on campus
- 49% admissions acceptance rate
- Minority students make up 12% of the entering class
- Active Students: 90 student organizations sponsor 250+ events each year; 80% participate in community service; 60% participate in academic internships; 65% participate in sports (27% varsity)

## Academics

- Student/faculty ratio: 11:1; Average class size: 15
- 24 departmental and 8 interdisciplinary majors and 27 minors; BA or BS degree, four-year program of study in liberal arts and sciences; MS degree in accounting
- Most popular majors: Business Administration, Biology, Political Science, English and International Studies
- Many study abroad, internship and research opportunities
- Very successful graduates: twice national average acceptance rate to medical school (AMCAS data); over 95% admissions to business, divinity and law schools (Career Services surveys); top employers: Ernst & young, Morgan Keegan, St. Jude Children's Research Hospital, Teach for America and Youth Villages

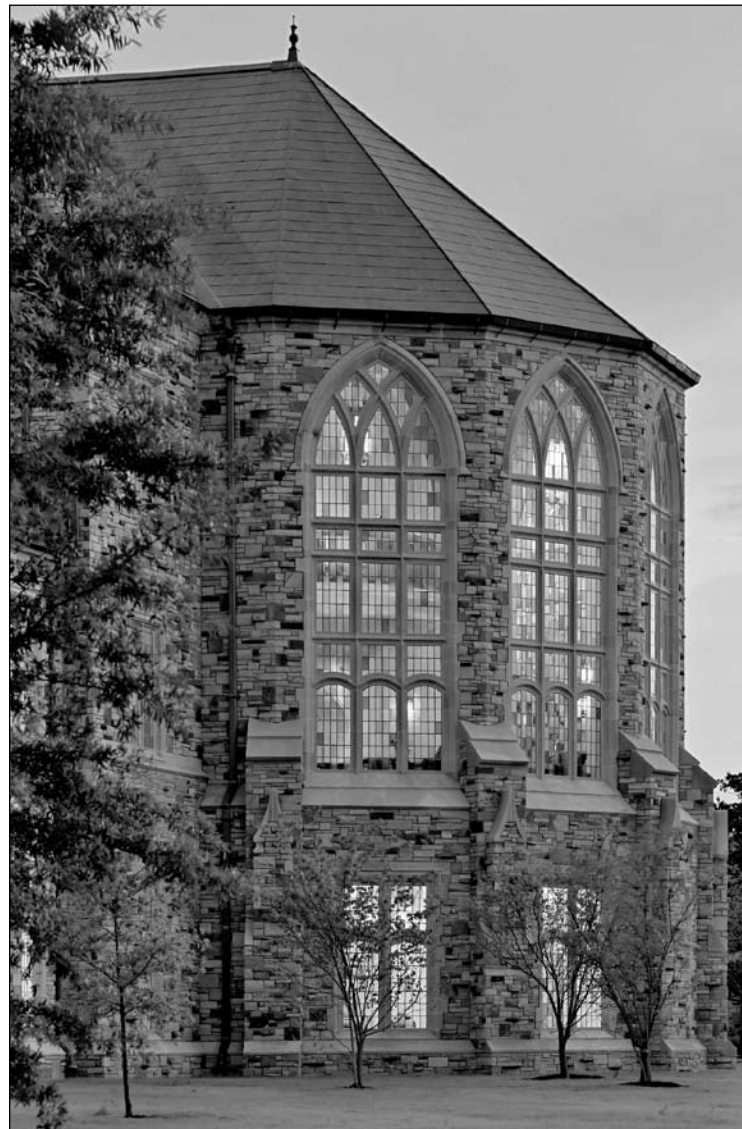
General bachelor's degree requirements—128 credits and the ability to:

- Critically examine questions of meaning and value.
- Develop excellence in written communication.
- Understand how historical forces have shaped human cultures.

- Read and interpret literary texts.
- Participate in the analysis of artistic expression or in the performance or production of art.
- Gain facility with mathematical reasoning and expression.
- Explore and understand scientific approaches to the natural world.
- Explore and understand the systematic analysis of human interaction and contemporary institutions
- View the world from more than one cultural perspective.
- Develop intermediate proficiency in a second language.
- Participate in activities that broaden connections between the classroom and the world.
- Participate in activities that encourage lifelong physical fitness.

## Athletics

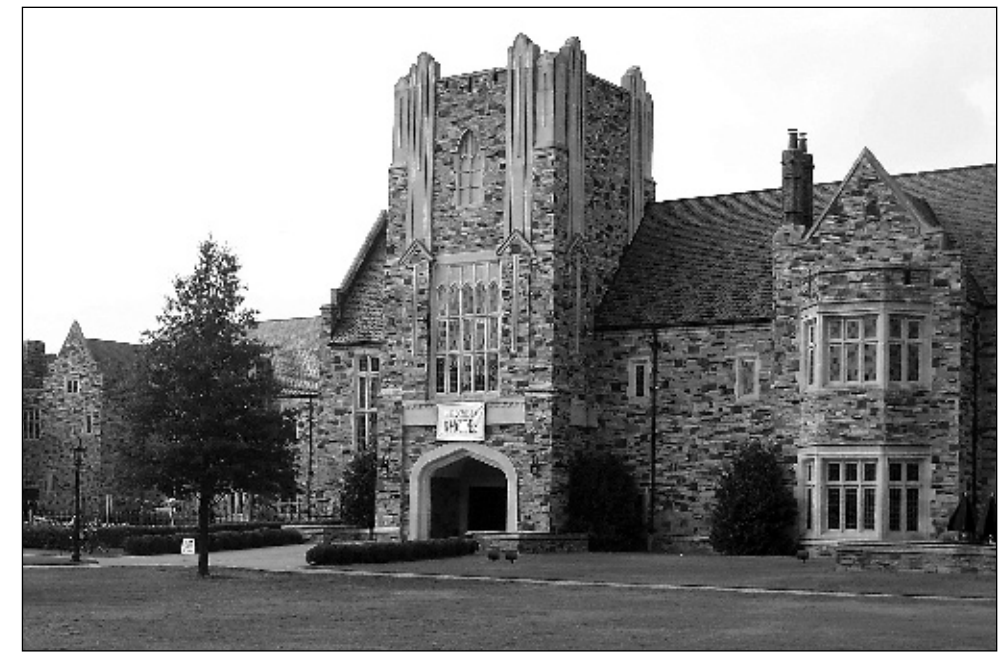
- Varsity Sports: 27% of Rhodes students compete on varsity teams (10 women's and 9 men's varsity sports) with an 87% 4yr-graduation rate (2002)
- Intramural & Club Sports: 65% participate in at least one of 10 club and 8 intramural sports
- NCAA Division III Southern College Athletic Conference



## Athletics Facilities

The Bryan Campus Life Center (BCLC) officially opened on March 17, 1997, to Rhodes students, faculty, staff and alumni. The \$22 million facility has become the centerpiece of campus life at Rhodes. Within the facility, there is the newly renovated Mallory-Hyde Gymnasium; a 6,900 square foot fitness room; a multi-sports forum that can accommodate basketball, volleyball, baseball, golf, track and tennis; an indoor track; three racquetball courts; two squash courts and six locker rooms. Also within its walls are the Lynx Lair, an upscale snack bar and grill for students, and the McCallum Ballroom for lectures, dances and special events.

Immediately adjacent to the BCLC is Alburty Pool. Originally installed in 1977, Alburty Pool received a new deck and pool house with the construction



of the Bryan Campus Life Center. The twenty-five meter pool contains six lanes and is heated. In 1998-99, for the



first time, a bubble was placed over the pool to allow the men's and women's intercollegiate swim teams to practice during the winter, as well as provide some additional lap swimming time for students, faculty, and staff.

The Bryan Campus Life Center also has become the nerve center for Rhodes Athletics. Lynx athletes and coaches have substantial locker room, spacious offices and a tremendous training room. The state-of-the-art, 6,900 square foot fitness room combines free weights with resistive cardiovascular equipment to meet a variety of needs for all users. There is also a state-of-the art sound system and four televisions equipped with cable for users' viewing and listening pleasure. Colleges with fewer than 5,000 students average 1.3 square feet per student in their fitness facilities. Rhodes far exceeds this standard, providing 4.9 square feet per.

Fargason Field is home to Lynx football. All Rhodes home games are played before the 3,300 capacity stadium. The field is settled within the college's newly renovated track facility which boasts one of the region's highest quality outdoor tracks.

Rhodes presently offers alumni memberships to the Bryan Campus Life Center. For more information about the facility and membership availability, contact David Hicks at (901) 843-3438.



— *Strangely enough* —

## OUR EXPERIENCE TREATING WINGS, PAWS, FLIPPERS AND CLAWS MAKES US BETTER AT HEALING SHOULDERS, ANKLES, KNEES AND ELBOWS.

Why do we play sports?

Why do we exhaust ourselves endlessly chasing one another within fence enclosed grassy meadows or frustrate ourselves by attempting to thwart the laws of physics that dictate an object at rest will remain at rest or punish ourselves with the unnatural pursuit of conquering environments we have no business wading into?

Why? Because it is there. Because the human spirit won't take no for an answer. Because adrenaline is a drug that feeds the soul. And because for those lucky few able to run faster, jump higher, throw farther and dive deeper, glory awaits.

So we play.

But not all of us are built for speed. Fewer still are built to absorb the punishment sports inflict. And none of us are eternally sixteen years old.

So we get hurt.

But we don't mind. Even the biggest, strongest, and fastest of us get hurt.

We accept that as part of sports. What we don't like, what we detest, is not being able to play.

That's where Campbell Clinic comes in.

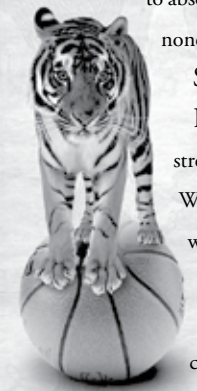
Our physicians specialize in getting athletes off the training table and back on the field as quickly as possible. But we're not just experts in sports medicine, we're also the leader in general orthopaedics. So is it any wonder that the most serious of athletes, those from the professional and college ranks, choose Campbell Clinic?

And if people whose careers are dependent upon healthy bodies think we're the best, then odds are we're a pretty good choice for weekend warriors, long-time couch potatoes, or anyone who turns an ankle, wrenches a back or twists a wrist.

Because even if you're tough enough to play with pain, there's no reason you should have to.

CAMPBELL CLINIC IS PROUD TO BE THE OFFICIAL SPORTS MEDICINE PROVIDER FOR THE MEMPHIS GRIZZLIES, THE MEMPHIS REDBIRDS, UNIVERSITY OF MEMPHIS ATHLETICS, RHODES COLLEGE ATHLETICS, CHRISTIAN BROTHERS UNIVERSITY ATHLETICS, THE MEMPHIS RIVER KINGS, THE KROGER ST. JUDE TENNIS TOURNAMENT, AND BALLET MEMPHIS.

**CAMPBELL CLINIC**  
Orthopaedics  
[www.campbellclinic.com](http://www.campbellclinic.com)



### Media Outlets

**The Commercial Appeal**  
495 Union Avenue  
Memphis, TN 38103  
Ph: (901) 529-2361  
Fax: (901) 529-2362

**The Memphis Flyer**  
460 Tennessee  
Memphis, TN 38103  
Ph: (901) 521-9000  
Fax: (901) 521-0129

**WREG-TV 3 Sports**  
803 Channel 3 Drive  
Memphis, TN 38103  
Ph: (901) 543-2153  
Fax: (901) 543-2167

**WMC-TV 5 Sports**  
1960 Union Avenue  
Memphis, TN 38104  
Ph: (901) 726-0408  
Fax: (901) 279-7633

**WHBQ-TV 13 Sports**  
485 South Highland  
Memphis, TN 38111  
Ph: (901) 320-1340  
Fax: (901) 320-1366

**WPTY-TV 24 Sports**  
2701 Union Extended  
Memphis, TN 38112  
Ph: (901) 321-7668  
Fax: (901) 452-1820

**WMC Radio 790 Sports**  
1960 Union Avenue  
Memphis, TN 38104  
Ph: (901) 726-0555  
Fax: (901) 722-5643

**SCAC Office**  
2935 Horizon Park Drive, St. C  
Suwannee, GA 30024-7220  
Ph: (678) 546-3470  
Fax: (678) 546-3471

### 2007-08 Schedule

<b>NOVEMBER</b>		25 AUSTIN COLLEGE *	8 pm
1 Austin Peay <sup>1</sup>	7 pm	27 COLORADO COLLEGE *	2 pm
16 Westminster <sup>2</sup>	3 pm		
17 Rhema <sup>2</sup>	1 pm	<b>FEBRUARY</b>	
30 University of the South *	8 pm	1 Millsaps College *	8 pm
		3 Hendrix College *	3 pm
<b>DECEMBER</b>		8 DePauw University *	8 pm
2 Oglethorpe University *	3 pm	10 Centre College *	3 pm
3 PRINCIPIA	7 pm	15 UNIVERSITY OF THE SOUTH *	8 pm
4 FREE WILL BAPTIST		17 OGLETHORPE UNIVERSITY *	3 pm
15 HUNTINGDON COLLEGE	3 pm	23 Birmingham Southern *	5 pm
17 LAGRANGE COLLEGE	3 pm	28 SCAC Tournament	
30 Washington & Lee Tournament	TBA		
31 Washington & Lee Tournament	TBA	<sup>1</sup> Exhibition game	
		<sup>2</sup> Hendrix Tip-Off Classic	
		* SCAC game	
		Home games in <b>BOLD</b>	
<b>JANUARY</b>			
5 BIRMINGHAM SOUTHERN *	3 pm		
8 UNIVERSITY OF DALLAS	4 pm		
11 DEPAUW UNIVERSITY *	8 pm		
13 CENTRE COLLEGE *	3 pm		
18 Trinity University *	8 pm		
19 Southwestern University *	8 pm		

### Credits

Front Cover—Seniors Justin Long and Joe Thompson and junior Cory Smith inside the Barrett Library.  
The 2007-08 Rhodes Basketball Media Guide was designed and edited by Evan Elliott. Special thanks to Kevin Barre for editorial assistance and to Matt Dean for writing contributions. Photography by Terry Sweeney.

### Contents

College Profile ..... Inside Front Cover  
2007-08 Schedule, Quick Facts and Media information ..... 1

### The Team

Season Preview ..... 2  
Head Coach Herb Hilgeman ..... 3  
Assistant Coach Thad Phillips ..... 3  
Support Staff and Department Directory ..... 4  
Team Roster and photo ..... 5  
The Players ..... 6-9

### SCAC

SCAC Profile ..... 10  
Competing Programs ..... 11

### Lynx History

Lynx Records ..... 12  
Program Supporters ..... 15  
Athletic Facilities ..... Inside Back Cover

### Quick Facts General Information

Location ..... Memphis, TN 38112  
Enrollment ..... 1,725  
Founded ..... 1848  
Nickname ..... Lynx  
Colors ..... Red and Black  
Stadium ..... Mallory Gymnasium  
Capacity ..... 2,200  
Affiliation ..... NCAA Division III  
Conference ..... Southern Collegiate Athletic  
President ..... Dr. William E. Troutt  
Athletic Director ..... Mike Clary  
Phone ..... (901) 843-3939

### Coaching Staff

Head Coach ..... Herb Hilgeman  
Assistant Coach ..... Thad Phillips  
Assistant Coach ..... Lee Qualls

### Sports Information

Director ..... Matt Dean  
Office Phone ..... (901) 843-3946  
Asst. Director ..... Samantha Lambert  
Office Phone ..... (901) 843-3168  
Student Associates ..... Meredith Bond, Anne Bradshaw  
Office Phone ..... (901) 843-3954  
SID Fax ..... (901) 843-3749



**HERB HILGEMAN**  
Head Coach

Herb Hilgeman begins his 32nd season as Rhodes' head basketball coach in 2007-08. In addition to his coaching duties, he also serves as an associate athletic director. During his tenure as head coach, Hilgeman's teams have been ranked nationally in the NCAA

Division III Top 25 for 14 of the last 29 years.

In his 31 years at Rhodes, Hilgeman has become the all-time winningest basketball coach in the school's history. Entering the 2007-08 season, he has a career record of 444-313 as a Lynx coach, which equates to a winning percentage of (.586)--the highest winning percentage of any present coach in the SCAC. He also ranks in the Top-40 among Division III head coaches in winning percentage and career victories.

Under Hilgeman's direction, Rhodes men's basketball has been ranked as high as 4th in the nation, 1st in scoring margin, 2nd in scoring offense, 3rd in won-lost percentage, and 6th in free throw percentage. In 1997-98, Rhodes led the nation in field goal percentage defense. The 1992-93 team, finished the season with a 21-6 record and advanced to the 2nd round of the NCAA tournament, after hosting a 1st round game in Mallory-Hyde Gymnasium and defeating Virginia Wesleyan by a score of 71-62. During the 1991-92 season, the Lynx thrilled fans with a school record 20-game winning streak, the longest streak in Division III for that year.

Hilgeman has also been recognized by his peers for his coaching successes, having been named the South Region Coach of the Year for both the 1979-80 and 1980-81 seasons, the Collegiate Athletic Conference Coach (CAC) of the Year in 1990-91, and the Southern Collegiate Athletic Conference (SCAC) Coach of the Year in 1992-93.

A native of Southgate, Kentucky, Hilgeman graduated from Miami University (Ohio) in 1972 with a B.S. in Education. A four-year letterman in basketball while at Miami, he participated in the 1969-70 NIT Tournament and in the 1970-71 NCAA Tournament. He then

served for two years as a basketball and baseball coach at Highlands High School in Ft. Thomas, Kentucky, before moving to Centre College in 1975 as an assistant basketball coach and head track coach. A year later, he accepted his present position at Rhodes, and in 1978 received his master's degree in Education from Memphis State University.

Coach Hilgeman and his wife, Beth, reside in Cordova, Tennessee. They have four children: Michelle, Mary, David, and Charlie.

### TRACKING LYNX BASKETBALL

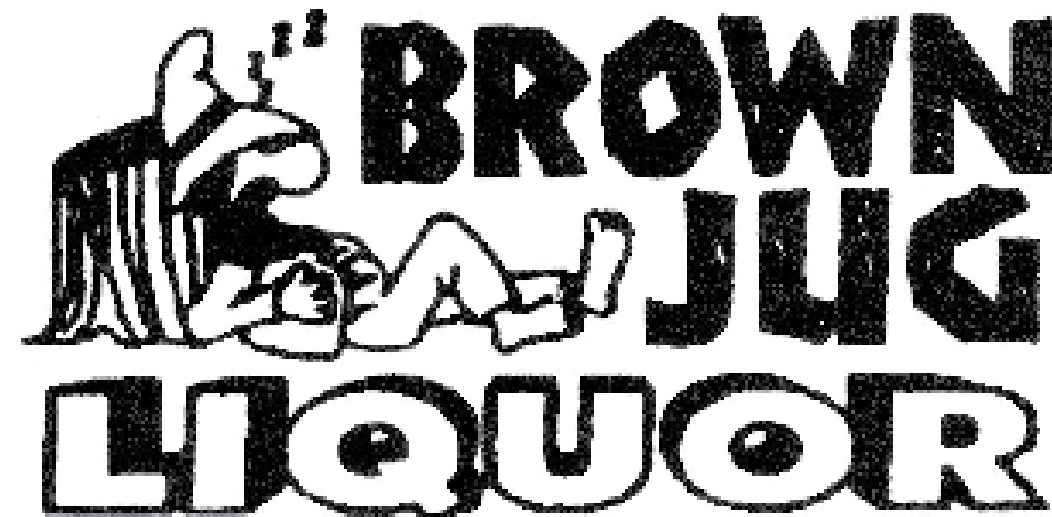
Season	Record	National Rank
1978-79	16-9	9
1979-80	22-6	5
	South Region Coach of the Year CAC Champions NCAA Tournament	
1980-81	23-3	7
	South Region Coach of the Year CAC Champions NCAA Tournament	
1981-82	13-9	17
1982-83	16-7	18
1990-91	15-10	
	CAC Champions CAC Coach of the Year	
1991-92	20-5	10
	SCAC Champions NCAA best 20-game win streak	
1992-93	21-6	8
	SCAC Champions NCAA Tournament SCAC Coach of the Year	
1993-94	19-6	4
1994-95	18-7	19
1995-96	18-7	21
1996-97	15-9	24
1997-98	14-11	21
1998-99	19-6	15
1999-00	17-8	20

## CROWN COACH

CHARTERS & TOURS

384-9988

THE OFFICIAL MOTORCOACH CARRIER OF  
**RHODES COLLEGE**



2375 SUMMER AVE. MEMPHIS, TN. 38112

(901)458-3501 FAX (901)458-9932

E-MAIL [brownjugliquors@juno.com](mailto:brownjugliquors@juno.com)



PROGRAM SUPPORTERS

THE TEAM



Live music Wednesday, Friday and Saturday  
to book your private parties call Chuck at 274-7101



The Original Zinnie's  
established in 1973

"...the quintessential neighborhood bar"  
Memphis Magazine

"...a favorite Rhodes College  
hangout for over 30 years"

Bell Baker  
OWNER  
Class of '72

1688 Madison Memphis, Tenn. 38104  
901-726-5004



supports

## RHODES COLLEGE BASKETBALL

GO LYNX!



**THAD PHILLIPS**  
Assistant Coach

Thad Phillips joins Rhodes College in 2007 after a season at SCAC member Oglethorpe University. Coach Phillips was a member of the coaching staff of Carroll College (Waukesha, WI) for two seasons, with a trip to the NCAA Tournament in 2005. Prior to coaching at Carroll, Phillips was a staff member at Concordia University Wisconsin for three seasons, culminating in a conference championship in 2004. Coach Phillips was a starting guard on a conference championship team at Concordia University Wisconsin. He will also be an assistant coordinator of recreational services at Rhodes.



**LEE QUALLS**  
Assistant Coach

Lee Qualls enters his ninth season as a Lynx assistant coach. A Memphis native, Qualls was a four-year starter, first team all-conference, first team all-suburban and MVP at Ramsey High School in Ramsey, N.J. Qualls attended the College of William & Mary on a football scholarship and received his B.A. in Business Administration in 1983. He later earned an MBA from the UNC Chapel Hill in 1988. In addition to contributing to individual player instruction and game management, Qualls also will assist the Lynx recruiting efforts. He brings a unique coaching perspective to the program, including his corporate experiences in international marketing.

### SEASON PREVIEW

The Lynx, who are returning 13 letter winners from last year's squad, are looking to improve upon last season. The 2006-2007 campaign was a learning experience for the Lynx as they had ten different players who started games for them during the season, and seven sophomores and freshmen who played double digit minutes during the season. There is much to be excited about in Lynx country this season with the young players being one year older and wiser and seniors Joe Thompson (Nashville, TN) and Justin Long (Little Rock, AR).

The Lynx have been practicing hard since October 16th and Head Coach Herb Hilgeman is "excited to be able to play a quality, well coached opponent in Austin Peay, but also for the opportunity to compete against another team after two weeks of competing just against each other. This game will give us the chance to evaluate and see what our players do in a true game situation. Obviously the guys are excited about the opportunity to play a D1 opponent and to showcase the abilities they have, but it will be a great experience and learning

tool for us as we head into our season."

Thompson averaged 11.5 points per game in 2006-2007 while Long averaged 5.0 points and led the Lynx in rebounding with an average of 5.1 a game. SCAC leading scorer junior Cory Smith (Bartlett, TN) returns and again looks to be a key figure in the Lynx success. Other key players returning for the Lynx are sophomores

Jared Hoskins (Rossville, GA) and Reid Hamilton (Birmingham, AL). Both players averaged more than 15 minutes per game last year with Hoskins averaging 9.7 points and Hamilton 5.7 points. Juniors Blake Wilson (Oakland, TN), Rob Bledsoe (Athens, TN), Dean Shroyer (Homewood, AL) and Jeff Blumenthal (Acworth, GA) all figure to give the Lynx extra depth on the court.





**DREW GIBSON**  
Head Athletic Trainer

Drew Gibson enters his first years as the Lynx Head Athletic Trainer for the 2007-08 season after serving as the assistant trainer last year. Gibson graduated from the University of Memphis in 2001 with a degree in exercise sci-

ence, where worked with the football and baseball teams as a student trainer. He also served as a training camp intern with the Miami Dolphins in 1999.

Gibson recently completed his Masters in Sports Psychology at Murray State University, where he worked with the women's basketball and baseball programs. Drew, 26, is a Certified Athletic Trainer and resides in Memphis.

### Athletic Department Directory

#### ADMINISTRATION

- Mike Clary, Athletics Director .....x3939
- Herb Hilgeman, Associate Athletics Director ..... x3942
- David Hicks, Associate Athletics Director ..... x3438
- Sarah Hatgas, Senior Women's Administrator .....x3949

#### SPORTS INFORMATION

- Matt Dean, director ..... x3946
- Samantha Lambert, associate director.....x3168
- Amie Cahill, assistant ..... x3020
- Meredith Bond, student associate .....x3954
- Anee Bradshaw, student associate.....x3954

#### BASEBALL

- Jeff Cleanthes, head coach .....x3456
- Rob Schrier, assistant coach .....x3518
- Steven Wright, assistant coach .....x3518

#### BASKETBALL, MEN

- Herb Hilgeman, head coach ..... x3942
- Thad Phillips, assistant coach.....x3945

#### BASKETBALL, WOMEN

- Matt Dean, head coach..... x3946
- Amie Cahill, assistant coach ..... x3020

#### CROSS COUNTRY/TRACK & FIELD

- Robert Shankman, head coach .....x3950
- Justin Blackburn, assistant coach ..... x3463
- Matt Buchholz, assistant coach.....x3461

#### FIELD HOCKEY

- Jane Wells, head coach.....x3013

#### FOOTBALL

- Joe White, head coach .....x3019
- Jonathan Croft, assistant coach..... x3151

- Gordon Ellingsworth, assistant coach..... x3944
- Adam McClain, assistant coach .....x3455
- Joel Hankins, assistant coach..... x3151
- Scott Srnka, assistant coach .....x3780
- Terry Ursin, assistant coach .....x3466
- John Whittaker, assistant coach ..... x3462

#### GOLF, MEN

- Bill Cochran, head coach ..... x3460
- Gordon Ellingsworth, assistant coach.....x3456

#### GOLF, WOMEN

- Mike Clary, head coach .....x3939
- Gordon Ellingsworth, assistant coach.....x3456

#### SOCCER, MEN

- Andy Marcinko, head coach .....x3948

#### SOCCER, WOMEN

- Bobby Lessentine, head coach.....x3779

#### SOFTBALL

- David Hicks, head coach ..... x3438
- Adam McClain, assistant coach .....x3455

#### SWIM

- Jon Duncan, head coach.....x3452

#### TENNIS

- Sarah Hatgas, head coach .....x3949
- Marcella Houseal, assistant coach.....x3458

#### VOLLEYBALL

- Samantha Lambert, head coach .....x3168

\* all numbers are 901 area code with 843-prefix

TO ALL RHODES FACULTY AND STUDENTS,  
BEST WISHES FOR A GREAT YEAR



**52 S. SECOND STREET**  
**(901) 523-2746**

**TUESDAY - THURSDAY 4:30 - 12:00 AM**  
**FRIDAY & SATURDAY 12 NOON - 1:00 AM**

### Josef's Jewelers

9155 HWY 72, Suite 18  
Germantown, TN 38138

901 758-1700

FINE DIAMONDS AND WATCHES  
DIAMOND REMOUNTING  
EXPERT WATCH AND JEWELRY REPAIR



Begin the underwater adventure of a lifetime TODAY!

999 S. Yates  
Memphis, TN 38119  
901-763-3483

The finest SCUBA education, travel and equipment since 1961.

THE TEAM

PROGRAM SUPPORTERS



Dear Rhodes Basketball Friend,

I am writing you about an opportunity to become more involved with Rhodes basketball. The "Friends of Rhodes Basketball" booster club helps the program meet our fundraising goals and needs. Whatever donation you can make would be extremely helpful.

Your contribution to the basketball program should not be in exchange for your support of the college through the Annual fund. We fully support the Annual Fund and would expect any contribution to our efforts to be a supplement to your current contribution to the college.

If you have an interest, please return the form below and make all checks payable to Rhodes Basketball. Any donation you make will be greatly appreciated and go to the good of Rhodes basketball. There are six levels of membership:

<b>MEMBER</b>	<b>\$25</b>	<b>Blue Chip</b>	<b>\$250+</b>
<b>TEAMMATE</b>	<b>\$50+</b>	<b>MVP</b>	<b>\$500+</b>
<b>LYNX</b>	<b>\$100+</b>	<b>GM</b>	<b>\$1000+</b>

We would like to acknowledge and thank the Friends of Rhodes Basketball

Mike O'Keefe	GM	John Ivy	Lynx
Dr. Charles Parrot	GM	Zach Moore	Lynx
Patrick Yoder	GM	Pat Thompson, Jr.	Lynx
David McWilliams	MVP	Ross Armstrong	Lynx
Albert Johnson	MVP	Tom Charleton	Lynx
Mike Gonda	MVP	John Keesee	Lynx
Al and Majorie Wunderlich	MVP	Austin Lutz	Lynx
Josh Cockerham	MVP	Jim Massey	Lynx
Tim O'Keefe	Blue Chip	Rob Thompson	Lynx
Scott Brown	Blue Chip	James Underwood	Lynx
John Caviness	Blue Chip	Eric Teal	Lynx
Matt Bakke	Blue Chip	Rob Schutt	Lynx
Brian Coldren	Blue Chip	Jettie Bowen	Lynx
Ted Davis	Blue Chip	Lucy Black and Tyler Todd	Lynx
Donnie Spence	Blue Chip	Hal Fogelman	Lynx
David Norton	Blue Chip	Bob Hamrin	Lynx
Henry Lindeman	Blue Chip	John Langdon	Lynx
Jerrod Buckaloo	Blue Chip	J.J. Guccione	Lynx
Kim and Judy Johnson	Blue Chip	William Small	Teammate
Ross Armstrong	Blue Chip	Rev. Claude and Margaret McMillion	Member
Rusty McDonald	Blue Chip		



NO.	NAME	POS	HT	WT	YR	HOMETOWN/HIGH SCHOOL
1	Joe Thompson	G	6'2	175	Sr.	Nashville, TN (Father Ryan)
2	Josh Arant	F	6'5	200	Fr.	Charlotte, NC (Charlotte Country Day)
4	Jared Hoskins	G	6'5	215	So.	Rossville, GA (NGCS)
5	Andyshea Saberioon	G	6'2	190	So.	Houston, TX (Second Baptist)
10	Dean Shroyer	G	6'0	185	Jr.	Homewood, AL (Homewood)
11	Nathan Ollie	G	6'0	160	Fr.	Memphis, TN (Whitehaven)
13	Jeff Blumenthal	G	6'2	195	Jr.	Acworth, GA (Harrison)
15	Matt Butler	G	6'2	160	Fr.	Beaufort, SC (Beaufort Academy)
20	Chris Eberle	G	6'2	190	So.	Cincinnati, OH (Madeira)
23	Cory Smith	G	6'5	195	Jr.	Bartlett, TN (Bartlett)
24	Blake Wilson	F	6'6	225	Jr.	Oakland, TN (Fayette Academy)
32	Larry Cunningham, Jr.	F	6'7	230	So.	St. Charles, MO (John Burroughs)
33	Andrew Sillyman	F	6'7	190	So.	Cordova, TN (FACS)
34	Justin Long	F	6'6	215	Sr.	Little Rock, AR (Pulaski Academy)
42	Rob Bledsoe	C	6'10	215	Jr.	Athens, TN (McMinn Central)
44	Reid Hamilton	F	6'6	215	So.	Birmingham, AL (Mountain Brook)

Head Coach: Herb Hilgeman  
Assistant Coach: Thad Phillips  
Assistant Coach: Lee Qualls

LYNX HISTORY

THE TEAM

**Applicant's Name:** \_\_\_\_\_

**Address:** \_\_\_\_\_  
\_\_\_\_\_

**Phone:** \_\_\_\_\_ **Amount Enclosed:** \_\_\_\_\_



THE TEAM



**JUSTIN LONG**  
 Senior · Forward  
 6-6 · 215  
 Little Rock, Ark.  
 Pulaski Academy

# 34

Justin Long returns to the Lynx after a very solid junior season. Justin's tough defense and rebounding ability will help bolster the Rhodes' inside game. Justin also has the ability to step outside and hit the three-pointer. Long will be a starter at the forward position this year and will be counted on to provide leadership to the younger players.

	GP	GS	FG	FGA	PCT	3FG	FGA	PCT	A	OFF	DEF	TOT	RPG	TP	PPG
2006-2007	23	19	37	77	.481	16	37	.432	25	36	82	118	5.1	115	5.5
2005-2006	27	4	42	101	.416	22	57	.386	23	42	77	119	4.4	130	4.8
2004-2005	19	1	13	32	.406	7	21	.333	8	15	10	25	1.3	39	2.1
<b>Career</b>	<b>69</b>	<b>24</b>	<b>92</b>	<b>210</b>	<b>.438</b>	<b>45</b>	<b>115</b>	<b>.391</b>	<b>56</b>	<b>93</b>	<b>169</b>	<b>262</b>	<b>3.8</b>	<b>284</b>	<b>4.2</b>

# 1

**JOE THOMPSON**  
 Senior · Guard  
 6-2 · 175  
 Nashville, Tenn.  
 Father Ryan



Joe Thompson returns to Rhodes after a solid junior season in which he started at point guard. Thompson will be called upon to continue his solid play at the point as well as be one of the team leaders. Joe is a very athletic guard who plays excellent defense and is capable of scoring in bunches.

	GP	GS	FG	FGA	PCT	3FG	FGA	PCT	A	OFF	DEF	TOT	RPG	TP	PPG
2006-2007	18	16	70	186	.376	45	118	.381	31	10	46	56	3.1	207	11.5
2005-2006	27	27	92	252	.385	42	137	.307	40	23	62	85	3.1	260	9.6
2004-2005	23	10	70	169	.414	37	93	.398	35	9	27	36	1.6	215	9.3
<b>Career</b>	<b>68</b>	<b>53</b>	<b>232</b>	<b>607</b>	<b>.384</b>	<b>124</b>	<b>348</b>	<b>.356</b>	<b>106</b>	<b>42</b>	<b>135</b>	<b>177</b>	<b>2.6</b>	<b>682</b>	<b>10.0</b>

### PROGRAM RECORDS

#### POINTS

Game:	Cory Smith	44	2006-07
Season:	Mike O'Keefe	688	1979-80
Career:	Scott Patterson	1,989	1981-85

#### FIELD GOALS MADE

Game:	Mike O'Keefe	21	1979
Season:	Mike O'Keefe	293	1979-80
Career:	Scott Patterson	752	1981-85

#### FIELD GOALS ATTEMPTED

Game:	Mike O'Keefe	31	1979
Season:	Mike O'Keefe	595	1979-80
Career:	Scott Patterson	1,513	1981-85

#### FIELD GOAL PERCENTAGE

Season:	John Tibbetts	.640	1986-87
Career:	John Tibbetts	.561	1985-89

#### FREE THROWS MADE

Game:	Mike Hettinger	17	1967
Season:	Scott Patterson	170	1984-85
Career:	Scott Patterson	487	1981-85

#### FREE THROW ATTEMPTS

Game:	Mike Hettinger	22	1967
Season:	Mike Hettinger	218	1966-67
Career:	Scott Patterson	587	1981-85

#### FREE THROW PERCENTAGE

Season:	Austin Lutz	.882	2002-03
Career:	Ron McAfee	.849	1968-69

#### POINTS PER GAME

Season:	Scott Patterson	25.0	1981-82
Career:	Scott Patterson	22.4	1981-85

#### REBOUNDS

Game:	Fred Bertrand	31	1959
Season:	Fred Bertrand	415	1959-60
Career:	Fred Bertrand	1,032	1956-60

#### ASSISTS

Game:	Albert Johnson	12	1996
Season:	Mike Gonda	155	1991-92
Career:	Albert Johnson	500	1992-96

#### THREE POINT FIELD GOALS MADE

Game:	Brian Baird	10	2001
Season:	Josh Cockerham	75	1997-98
Career:	Josh Cockerham	235	1996-2000

#### THREE POINT FIELD GOAL ATTEMPTS

Game:	Brian Baird	17	2001
Season:	Josh Cockerham	196	1997-98
Career:	Josh Cockerham	623	1996-2000

#### THREE POINT FIELD GOAL PERCENTAGE

Season:	Kevin Smith	.530	1987-88
Career:	Andy Pippenger	.457	1989-93

### 1,000 POINT CLUB

1. Scott Patterson	1,989	1981-85	14. Josh Cockerham	1,292	1996-00
2. Thomas Johnson	1,831	1990-94	15. Dan Anderson	1,267	1973-76
3. Rami Almefty	1,693	2002-06	16. Robert Jackson	1,253	1952-56
4. Mike Gonda	1,687	1990-94	17. Rozell Henderson	1,216	1981-85
5. Mike O'Keefe	1,655	1978-81	18. Billy Young	1,210	1954-57
6. Neal Power	1,647	1997-01	19. Mark Carroll	1,206	1975-79
7. Eric Cardwell	1,550	1968-72	20. Matt Jakes	1,198	2002-06
8. Tim O'Keefe	1,411	1979-83	21. Eddie Hart	1,170	1966-69
9. Kevin McMillan	1,372	1986-89	22. Carl Fisher	1,118	1961-65
10. Albert Johnson	1,358	1992-96	23. Donnie Spencer	1,025	1984-88
11. Joe Boals	1,327	1955-59	24. Jim Moss	1,020	1967-71
12. Mark Wendel	1,325	1977-81	25. Jack Tilton	1,010	1963-67
13. Brendan Beehan	1,299	1994-98	26. Willie Hulon	1,005	1975-79



### AUSTIN COLLEGE

Location: Sherman, Texas  
Enrollment: 1,367  
Nickname: Kangaroos  
Colors: Crimson and Gold  
President: Dr. Oscar Page  
Athletic Director: Timothy Millerick  
Head Coach: Rodney Wecker



### BIRMINGHAM SOUTHERN

Location: Birmingham, Ala.  
Enrollment: 1,254  
Nickname: Panthers  
Colors: Black, Gold and White  
President: Dr. David Pollick  
Athletic Director: Joe Dean, Jr.  
Head Coach: Mitch Cole  
Assistant Coach: Jonathan Vines



### CENTRE COLLEGE

Location: Danville, Ky.  
Enrollment: 1,100  
Nickname: Colonels  
Colors: Gold and White  
President: John Roush  
Athletic Director: Brian Chafin  
Head Coach: Greg Mason  
Assistant Coach: James Booker



### COLORADO COLLEGE

Location: Colorado Springs, Colo.  
Enrollment: 1,950  
Nickname: Tigers  
Colors: Black and Gold  
President: Richard F. Celeste  
Athletic Director: Julie Soriero  
Head Coach: Andy Partee  
Assistant Coaches: Robert DeVane, Brad Butterworth



### DEPAUW UNIVERSITY

Location: Greencastle, Ind.  
Enrollment: 2,330  
Nickname: Tigers  
Colors: Old Gold and Black  
President: Dr. Robert G. Bottoms  
Athletic Director: S. Page Cotton, Jr.  
Head Coach: Bill Fenlon  
Assistant Coaches: Jon Miller, Carson Harris



### HENDRIX COLLEGE

Location: Conway, Ark.  
Enrollment: 1,094  
Nickname: Warriors  
Colors: Black and Orange  
President: Dr. J. Timothy Cloyd  
Athletic Director: Danny Powell  
Head Coach: Dan Priest  
Assistant Coaches: Thad McCracken



### MILLSAPS COLLEGE

Location: Jackson, Miss.  
Enrollment: 1,200  
Nickname: Majors  
Colors: Purple and White  
President: Dr. Frances Lucas  
Athletic Director: Tim Wise  
Head Coach: Tim Wise  
Assistant Coach: Justin LeBlanc



### OGLETHORPE UNIVERSITY

Location: Atlanta, Ga.  
Enrollment: 1,000  
Nickname: Stormy Petrels  
Colors: Black and Gold  
President: Lawrence Schall  
Athletic Director: Jay Gardiner  
Head Coach: Phil Ponder



### RHODES COLLEGE

Location: Memphis, Tenn.  
Enrollment: 1,725  
Nickname: Lynx  
Colors: Red and Black  
President: Dr. William E. Troutt  
Athletic Director: Mike Clary  
Head Coach: Herb Hilgeman  
Assistant Coaches: Thad Phillips, Lee Qualls



### UNIVERSITY OF THE SOUTH

Location: Sewanee, Tenn.  
Enrollment: 1,472  
Nickname: Tigers  
Colors: Purple and White  
President: Dr. Joel Cunningham  
Athletic Director: Mark Webb  
Head Coach: Joe Thoni  
Assistant Coach: Jeremy Smith



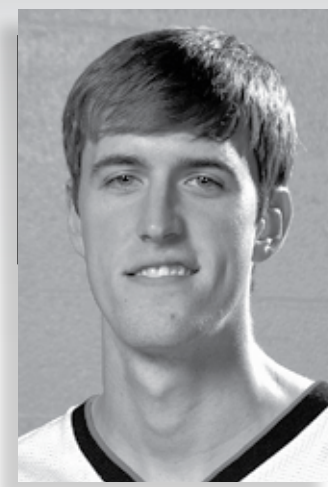
### SOUTHWESTERN UNIVERISTY

Location: Georgetown, Texas  
Enrollment: 1,289  
Nickname: Pirates  
Colors: Black and Gold  
President: Dr. Roy Schilling  
Athletic Director: Dr. Glada Munt  
Head Coach: Bill Raleigh  
Assistant Coach: Chet Cook



### TRINITY UNIVERSITY

Location: San Antonio, Texas  
Enrollment: 2,718  
Nickname: Tigers  
Colors: Maroon and White  
President: Dr. John R. Brazil  
Athletic Director: Bob King  
Head Coach: Pat Cunningham  
Assistant Coach: Chris Hill



**ROB BLEDSOE**  
Junior · Center  
6-10 · 215  
Athens, Tenn.  
Mcminn Central

# 42

Rob returns to Rhodes after a sophomore season in which he showed significant improvement and looks to be a major contributor for the 2007-2008 season. Bledsoe's size, athletic ability, and raw talent will make him a key contributor, to the Lynx inside game this season. With exceptional shot blocking ability and a soft touch around the basket, Rob will see quality time at the center position.

GP-GS	Offensive Totals				Rebounds			
	FG-FGA	Pct.	3FG-FGA	Pct.	A	Off	Def	Tot
23-13	24-61	.393	0-1	.000	8	14	37	51

Jeff Blumenthal returns to Rhodes after a sophomore season in which he gained valuable experience and showed significant improvement. A strong, physical combo guard, Jeff brings a tremendous work ethic to the program. He has playmaking abilities, and likes to get his teammates involved when running the point.

**JEFF BLUMENTHAL**  
Junior · Guard  
6-2 · 192  
Acworth, Ga.  
Harrison

# 13



GP-GS	Offensive Totals				Rebounds			
	FG-FGA	Pct.	3FG-FGA	Pct.	A	Off	Def	Tot
18-4	14-36	.389	0-1	.000	22	13	21	34



**DEAN SHROYER**  
Junior · Guard  
6-0 · 185  
Homewood, Ala.  
Homewood

# 10

Dean returns to the Lynx after seeing time in a reserve role at the guard positions during the 2006-2007 season. A strong, athletic guard, Shroyer is capable of playing either the point guard or the shooting guard position. Dean has the ability to get to the basket to create for himself or others, as well as the ability to hit the long range jumper.

GP-GS	Offensive Totals				Rebounds			
	FG-FGA	Pct.	3FG-FGA	Pct.	A	Off	Def	Tot
23-4	26-66	.394	12-32	.375	20	12	30	42



**CORY SMITH**  
 Junior · Guard  
 6-5 · 195  
 Bartlett, Tenn.  
 Bartlett

# 23

Cory Smith returns to Rhodes after a sophomore season in which he started at the guard position. Smith ended last season as the team's leading scorer. Cory is a very explosive, athletic guard, who can play either guard spot. His smooth outside shot and ability to get to the basket, along with his excellent perimeter defense will make him a major contributor for the Lynx this season.

2006-07 Stats

GP-GS	Offensive Totals				Rebounds			
	FG-FGA	Pct.	3FG-FGA	Pct.	A	Off	Def	Tot
23-23	128-291	.440	27-91	.297	51	35	59	94



THE TEAM

**BLAKE WILSON**  
 Junior · Forward  
 6-6 · 225  
 Oakland, Tenn.  
 Fayette Academy

# 24



Blake Wilson returns to the Lynx after starting 14 games during the 2006-2007 season. A strong physical, athletic player, Blake is capable of playing either forward spot. A rebounder and defender, Blake also has the ability to put the ball on the floor as well as hit the outside shot.

2006-07 Stats

GP-GS	Offensive Totals				Rebounds			
	FG-FGA	Pct.	3FG-FGA	Pct.	A	Off	Def	Tot
23-14	36-80	.450	2-8	.250	16	14	36	50

### SCAC PROFILE

The Southern collegiate Athletic Conference (SCAC) was formed to provide an association through which the member institutions may encourage organized competition in intercollegiate sports among teams representative of their respective student bodies. Members of this conference share a commitment to priority of the overall quality of academic standards and quality educational experiences.

The conference was founded and began operation on September 1, 1962, as the College Athletic Conference (CAC). Centre College, Southwestern at Memphis (Tennessee) (now known as Rhodes College), The University of the South (Sewanee), and Washington and Lee University of were the four charter members of the conference. Later in 1962, Washington University of St. Louis became the fifth member and the CAC remained unchanged until 1972.

Following membership changes throughout the 1970s and 1980s, the conference went through restructuring and renaming. With the addition of Millsaps College and Trinity University in 1988 and Hendrix College and Oglethorpe University in 1991, membership reached a then all-time high of eight. In 1991, the conference renamed itself the Southern Collegiate Athletic Conference, its first full-time commissioner Steve Argo was hired, and a conference office was established in Atlanta, Georgia. The SCAC added Southwestern University in 1993 with participation beginning in the 1994-95 academic year. In 1997-98, the SCAC added DePauw University with participation beginning in 1998-99.

Just this past year, Austin College and Colorado College were confirmed as members of the league with participation beginning in the 2006-07 academic year. Birmingham-Southern College has been approved as the 12th member of the SCAC with play in 2007-08.

The conference and its member institutions are committed to maintaining high academic standards. The member institutions are committed to the principle that a quality college athletics program is beneficial to the well-being of an institution in that it benefits the entire campus community as well as the student-athletes.

With nine member institutions maintaining Phi Beta Kappa chapters on their campuses, the SCAC boasts some of the most prestigious colleges and universities in the nation. SCAC schools are consistently ranked among the top 50 colleges and universities in the nation in such respected publications as Barron's, Peterson's, Princeton Review and National Review College Guide.

SCAC member institutions maintain consistent enrollments through very selective admissions standards and continuing quality education.

**SCAC INFORMATION**  
**Steve Argo, Commissioner**  
**Dwayne Hanberry, Asst. Commissioner**  
 2935 Horizon Park Drive, Ste. C  
 Suwanee, GA 38824-7229  
 Ph: (678) 546-3470  
 Fax: (678) 546-3471



**BOYS BASKETBALL CAMP**  
**JUNE 23 - 26, 2008 · JULY 14 - 17, 2008**

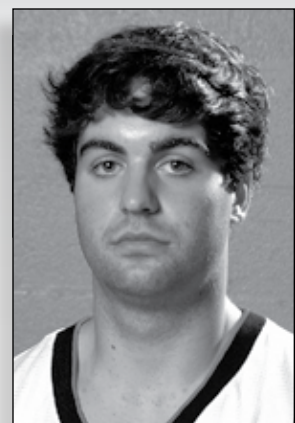
For more information, please contact Herb Hilgeman  
 (901) 843-3942 or hilgeman@rhodes.edu

[www.rhodeslynx.com](http://www.rhodeslynx.com)

SOUTHERN COLLEGIATE ATHLETIC CONFERENCE



# RHODES COLLEGE



**JOSH ARANT**  
Freshman · Forward  
6-5 · 200  
Charlotte, N.C.  
Charlotte Country Day

# 2

Josh is a strong, hard working forward that can shoot the ball. His strength and size allow him to play multiple positions as well as defend the perimeter or post player. He is looking to play minutes as a 3 or 4 this year.

As a senior at Charlotte Country Day, Josh averaged 20.6 points and 8.5 rebounds per game to go along with 4.6 assists. He was named team captain and MVP for his team as well as All-Conference CISAA and Honorable Mention All-State NCISAA. Josh is looking to play minutes at either forward position this season.



**MATT BUTLER**  
Freshman · Guard  
6-2 · 160  
Beaufort, S.C.  
Beaufort Academy

# 15

Matt is an athletic, hard working guard that can shoot the ball. He could see action this year at either guard position.

As a senior at Beaufort Academy, Matt scored over 1,000 points in his career. He was named team MVP to go along with being named SCISA AA Play of the Year for South Carolina. Matt was also named to the SCISA All-State team and given Beaufort Academy's highest award – The Athletic Achievement Award.



**NATHAN OLLIE**  
Freshman · Guard  
6-0 · 160  
Memphis, Tenn.  
Whitehaven

# 11

Nathan is a quick athletic guard who is capable of breaking down the defense with his penetration or the outside jumper. Nathan is a good passer who will see action this season as a reserve point guard.

As a senior at Whitehaven High School, Nathan averaged 19.6 points and 4 assists per game. He was chosen as team MVP as well as All Tournament for District16-AAA. His senior season also saw him chosen as the MCS Jamboree MVP as well as the MVP of the David Lipscomb Holiday Tournament. Nathan is majoring in Business and Economics



# LYNX BASKETBALL



**LARRY CUNNINGHAM, JR.**  
Sophomore · Forward  
6-7 · 230  
St. Charles, Mo.  
John Burroughs

# 32

Larry returns to the Lynx after a valuable freshman season where he gained great experience playing in 22 games. Larry's size and strength will bolster the Lynx inside presence on defense and his soft touch around the rim will give Rhodes an inside scoring option. Larry will see quality time at the post position this season

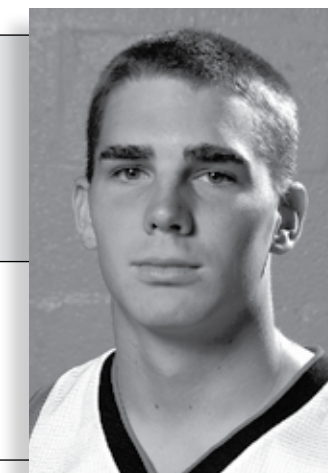
### 2006-07 Stats

GP-GS	Offensive Totals				Rebounds			
	FG-FGA	Pct.	3FG-FGA	Pct.	A	Off	Def	Tot
22-0	10-22	.455	0-0	.000	2	10	13	23

Chris Eberle returns to Rhodes after a valuable, learning experience as a freshman. Eberle's combination of strength and athleticism make him an ideal combo guard. Chris will see time at either guard spot in a reserve role this year.

**CHRIS EBERLE**  
Sophomore · Guard  
6-2 · 190  
Cincinnati, Ohio  
Maderia

# 20



### 2006-07 Stats

GP-GS	Offensive Totals				Rebounds			
	FG-FGA	Pct.	3FG-FGA	Pct.	A	Off	Def	Tot
2-0	0-1	.000	0-1	.000	0	0	1	1

**REID HAMILTON**  
Sophomore · Forward  
6-6 · 215  
Birmingham, Ala.  
Mountain Brook

# 44

Reid returns to Rhodes looking to improve on a great freshman season where he played in 23 games and started in seven of those contests. An athletic player, Reid can step out and play a perimeter position, or go inside and play with the posts. Reid is capable of scoring with his back to the basket in the post position or knocking down the jumpshot from the perimeter. His combination of size, strength and quickness allow him to defend multiple positions. Reid will see significant time at either forward position this season.

### 2006-07 Stats

GP-GS	Offensive Totals				Rebounds			
	FG-FGA	Pct.	3FG-FGA	Pct.	A	Off	Def	Tot
23-7	51-117	.436	8-27	.296	14	29	52	81

THE TEAM

THE TEAM



## JARED HOSKINS

Sophomore · Guard  
6-5 · 215  
Rossville, Ga.  
NGCS

# 4

Jared returns to the Lynx after a great freshman season where he started 6 games and saw action in 23 games. A prolific scorer, Jared's athleticism and great shooting touch make him a threat to score off the dribble or from beyond the arc. Jared will see time at either guard positions this year and will be counted on to be a consistent scoring threat for the Lynx.

### 2006-07 Stats

GP-GS	Offensive Totals				Rebounds			
	FG-FGA	Pct.	3FG-FGA	Pct.	A	Off	Def	Tot
11-0	7-11	.636	2-3	.667	1	3	8	11



## ANDYSHEA SABERIOON

Sophomore · Guard  
6-2 · 190  
Houston, Texas  
Second Baptist

# 5

Andyshea Saberioon returns to the Lynx after playing in 14 games as a freshman. A crafty ball handler and passer, Andyshea will be an asset for the Lynx at the point guard position. Able to find the open man from anywhere on the court, Saberioon will see time in a reserve role at the point guard position.

### 2006-07 Stats

GP-GS	Offensive Totals				Rebounds			
	FG-FGA	Pct.	3FG-FGA	Pct.	A	Off	Def	Tot
14-0	5-14	.357	1-4	.250	15	4	4	8



## ANDREW SILLYMAN

Sophomore · Forward  
6-7 · 190  
Cordova, Tenn.  
FACS

# 33



Andrew Sillyman returns to the Lynx from a sophomore season in which he played 11 games. A long, athletic player, Sillyman has the ability to play either the guard or forward position. His size and athleticism make him a match up problem for opposing teams on both ends of the floor.

### 2006-07 Stats

GP-GS	Offensive Totals				Rebounds			
	FG-FGA	Pct.	3FG-FGA	Pct.	A	Off	Def	Tot
11-0	7-11	.636	2-3	.667	1	3	8	11

