

# Rhodes College Digital Archives - DLynx

## Will I Be Lost In The Crowd?

Publisher	Memphis, Tenn. : Rhodes College
Rights	Rhodes College owns the rights to the archival digital objects in this collection. Objects are made available for educational use only and may not be used for any non-educational or commercial purpose. Approved educational uses include private research and scholarship, teaching, and student projects. For additional information please contact <a href="mailto:archives@rhodes.edu">archives@rhodes.edu</a> . Fees may apply.
Download date	2026-06-17 13:44:34
Link to Item	<a href="http://hdl.handle.net/10267/28510">http://hdl.handle.net/10267/28510</a>

WILL I BE LOST IN

THE CROWD?

---

# W I L L I B E L O S T I N T H E C R O W D A T C O L L E G E ?

---

When Southwestern at Memphis opens next fall, the freshmen will number only two hundred. You will be known in a short time by your fellow-classmen. The student body will total less than seven hundred, so that it will be possible for you to know and be known by every student in college before the end of the session.

You have heard of class sections of fifty, a hundred, five hundred, and even a thousand students in some of the large colleges and universities, where the relation between professor and student is so impersonal as scarcely to exist. We at Southwestern believe that you cannot get the most out of your years in college unless you have understanding friends to work with you and professors to give you personal direction. No one wants to be just a name in a roll book or a mere number in the records. We think that you and your professors should be friends and partners in a vitally important enterprise.

Southwestern professors know the names of their students, and can take a personal interest in their problems so as to do what they can to help solve these problems. They know that every student is an individual, different in personality, mind, and purpose, and that every student has his own latent abilities which college associations can help to discover and to develop.

A great many things are done at Southwestern to make possible the personal relationships which are so important. Classes and laboratory groups are limited in size. On the average there is one professor for every nine or ten students. Your faculty counsellor and your senior student adviser will be ready to assist you in every reasonable way, both at the beginning of

the session and later on. In addition, there are deans who will be concerned with your adjustment to college life. Southwestern's whole system, even the arrangement of the rooms in the dormitories, emphasizes the idea of the importance of the individual in a small group.

The ideal training for leadership is found in student activities. It is in them, rather than in the classroom, that students learn to carry executive duties and to lead their fellow students in competitive endeavor. A college like Southwestern, with its restricted number of students and large number of activities, offers the greatest opportunities of this kind. The chances that any given student's talent and ability will be recognized and developed are greater by many fold than in the larger institutions, because the competition is in hundreds instead of in thousands. Moreover, the percentage of students engaged in extra curricular activities is several times larger. It is literally true that for every Southwestern student there is a place of responsibility, an opportunity to work with and lead his fellows. As a matter of fact, most students cannot find the time to take part in all the activities which attract them, and so must choose a limited number from among those they consider most desirable.

Southwestern's athletic program offers sports for everyone—not for a few supermen chosen from outstanding high school athletes. Southwestern enters into intercollegiate competition in football, basketball, tennis, golf, track, cross-country running, and baseball. Its varsity teams are composed of students who are playing because they like to, and not because they

have been given a scholarship for that purpose. Its physical education and intramural programs offer a variety of eight sports for both men and women and are directed by highly qualified instructors.

The eleven national Greek-letter fraternities and sororities offer their members occasion to assume responsibilities of many kinds.

The unusually large number of other organizations, including the Christian Union Cabinet, the Y.W.C.A., the Ministerial Club, the International Relations Club, Stylus (a literary organization), the Nitist Club (a discussion group), Alpha Psi Omega (a dramatic organization), Chi Beta Phi (scientific fraternity), Tau Kappa Alpha (debating society), the Southwestern Singers, the Honor Council, the Student Council, Omicron Delta Kappa, Torch, Phi Beta Kappa, and many others present every incentive for college men and women to grow in leadership. A student at Southwestern is not lost in the crowd. These avenues of activity, together with the individual attention given by professors and advisers, are some of the positive advantages which are available at Southwestern.

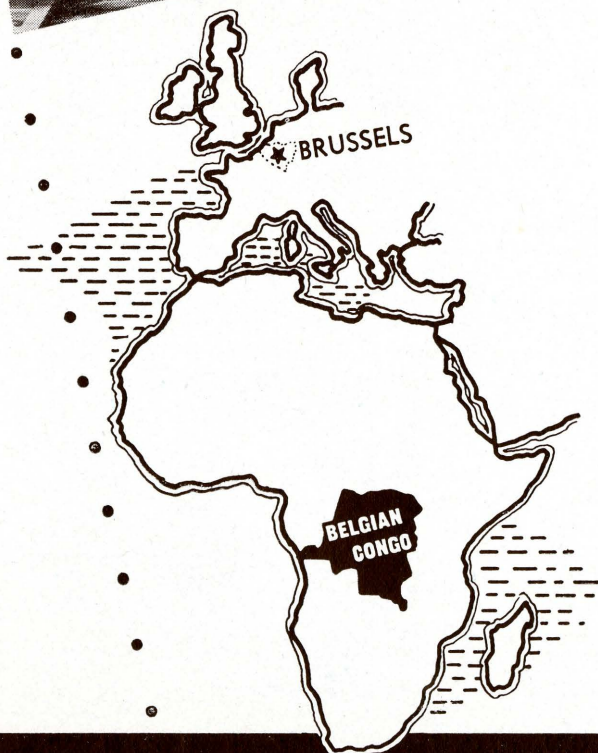
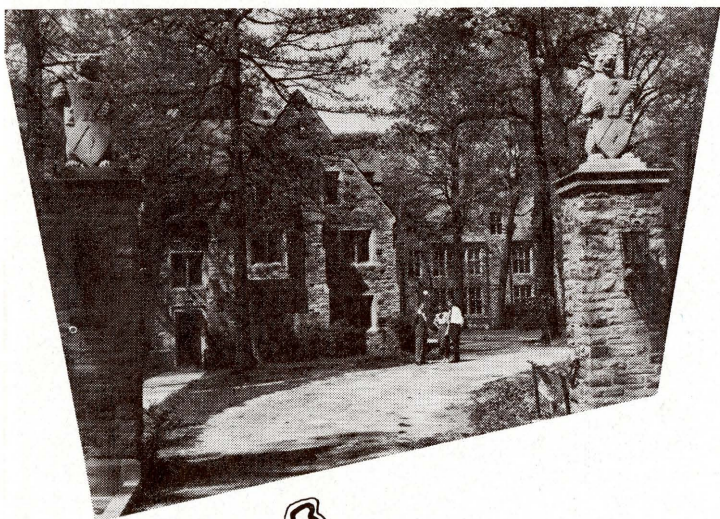
In a brief folder it is not possible to describe in detail all of the ways we seek to personalize education. Enough has been said, however to make clear that both faculty and students will be interested in *your* happiness and *your* success, and that there is no such thing as mass education at Southwestern.

We invite you to consider the unique advantages offered by Southwestern at Memphis when you face the important question, "*Will I be lost in the crowd at college?*"

# EDUCATION AT SOUTHWESTERN

FOR A LIFE OF SERVICE  
IN THE

## BELGIAN CONGO

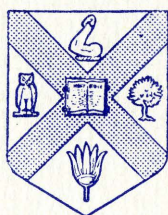


# SOUTHWESTERN AT MEMPHIS

MEMPHIS, TENNESSEE



For additional information write the Registrar or Professor J. O. Embry, faculty adviser for the course on Belgium and the Belgian Congo, Southwestern at Memphis, Memphis 12, Tennessee.



SOUTHWESTERN

AT MEMPHIS