

Rhodes College Digital Archives - DLynx

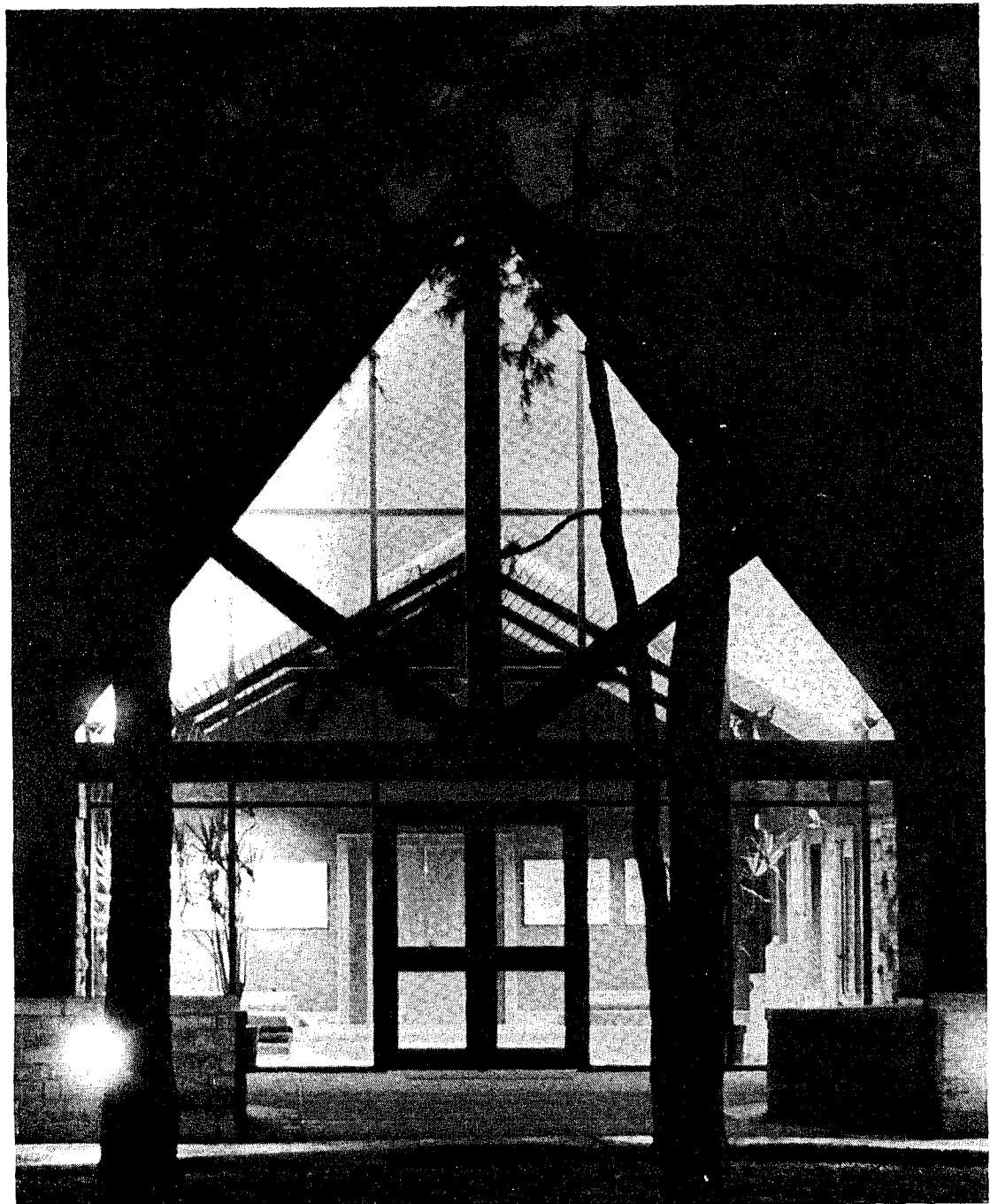
The Tempest Playbill, 1983

Item Type	Other
Publisher	Memphis, Tenn. : Theatre Department, Southwestern at Memphis
Rights	Rhodes College owns the rights to the digital objects in this collection. Objects are made available for educational use only and may not be used for any non-educational or commercial purpose. Approved educational uses include private research and scholarship, teaching, and student projects. For additional information please contact archives@rhodes.edu . Fees may apply
Download date	2025-05-20 13:45:34
Link to Item	http://hdl.handle.net/10267/7036

McCoy Theatre
Southwestern At Memphis

presents

The Tempest



McCOY THEATRE
SOUTHWESTERN AT MEMPHIS

presents

THE TEMPEST

By William Shakespeare

Directed by BENNETT WOOD

Assistant Director Teresa Morrow
Set Design Laura Canon
Music Arrangement Tony Lee Garner
Lighting Design Joel Chapman
Scenic Projections Brian Maffit
Costume Design David Jilg
Masks designed by Stephen Pair & Bob Ruffin
Choreography by Jenny Diggs
Stage Management Carol Beck

THE PLAYERS

<i>Alonso, King of Naples</i>	Phil Jones
<i>Sebastian, his brother</i>	Jonathan Shames
<i>Prospero, the right Duke of Milan</i>	Walter Smith
<i>Antonio, his brother, the usurping Duke of Milan</i> . . .	James Dale Green
<i>Ferdinand, son to the King of Naples</i>	Brian Maffitt
<i>Gonzalo, an honest old councillor</i>	Logan Browning
<i>Adrian, a lord</i>	Shawn Keating
<i>Francisco, a lord</i>	James Olcese
<i>Caliban, a savage and deformed slave</i>	Paul Fromberg
<i>Trinculo, a jester</i>	Matt Stevens
<i>Stephano, a drunken butler</i>	Ray Hill
<i>Boatswain</i>	Steven I. Lebovitz
<i>Mariners</i>	Bob Lawhon
.....	Mark-Landon Smith
<i>Miranda, daughter to Prospero</i>	Kimberly "Lila" Magee
<i>Ariel, an airy spirit</i>	Harold M. Leaver
<i>Iris, a Goddess</i>	Jan Bigham
<i>Ceres, a Goddess</i>	Allison Pace
<i>Juno, a Goddess</i>	Patricia Wadley
<i>Spirits</i>	Cookie Ewing
.....	Margaret Ewin Butler
.....	Mark-Landon Smith
.....	Bob Lawhon

THE SCENE: An Island

Twelve years ago, Prospero, the Duke of Milan, was usurped by his brother Antonio, with the help of Alonso, King of Naples and the King's brother Sebastian. Cast adrift with his daughter Miranda, he landed on an island where, by use of his magic art, he has ruled over the beast Caliban and the spirit Ariel. Now through his powers, he raises a storm to shipwreck his enemies and exact his revenge.

On the island all are separated: Sebastian plots to usurp his brother as King; the drunken butler, Stephano, and the jester, Trinculo, are persuaded by Caliban to kill Prospero; Miranda meets the King's son Ferdinand and they fall in love. Prospero sets heavy trials for Ferdinand and presents the young couple with a fantastic masque about the need for self-control and the ordering of the passions.

Prospero forgives his enemies, gives Ariel his freedom, abandons his magic art, and prepares to leave the island.

THERE WILL BE A 12 MINUTE INTERMISSION BETWEEN ACT I AND ACT II.

WHO'S WHO

PHIL JONES (Alonso)

Phil is a Southwestern senior who is majoring in Philosophy. He was last seen as Rev. Parris in the McCoy production of *The Crucible*. He was also assistant director for *Brecht on Brecht* and was the Writer in *The Good Doctor* at CBC.

JONATHAN SHAMES (Sebastian)

Jon was most recently seen as Grobert in *Carnival*. His McCoy appearances include *The Crucible*, *Living Together*, and *Brecht on Brecht*, and Southwestern's productions of *Kennedy's Children*, and *Round and Round the Garden*.

WALTER SMITH (Prospero)

We are happy to welcome Walter back to the McCoy stage where, last fall, he was seen as Judge Danfort in *The Crucible*. Walter's many Memphis credits include *Night of the Iguana*, *Inherit the Wind*, and *Man for All Seasons*.

JAMES DALE GREEN (Antonio)

McCoy audiences remember James as Jacquot in McCoy's production of *Carnival* and as Thomas Putnam in *The Crucible*. He was recently seen as Lord Percy in the Theatre Memphis production of *Anne of the Thousand Days*.

BRIAN D. MAFFITT (Ferdinand)

Brian is a Southwestern sophomore who recently was seen in Carnival. He has appeared with the First Generation for two years, and was in Candide. He also designed the set for the McCoy production of Living Together.

LOGAN BROWNING (Gonzalo)

This is Logan's McCoy stage debut. He is Assistant Dean of Southwestern's British Studies at Oxford program, and is also the Assistant Football Coach. Logan has also taught English at Southwestern and at Memphis Academy of Arts.

SHAWN KEATING (Adrian)

Shawn is a Southwestern freshman from Westfield, NJ. He was seen in The Crucible and has appeared in numerous high school and community theatre productions.

JAMES OLCESE (Francisco)

James is Assistant Professor of Biology here at Southwestern. His last appearance on the McCoy stage was in Another Part of The Forest as Gilbert Jugger. James is also a radio announcer for WLYX radio.

PAUL FROMBERG (Caliban)

This is Paul's debut in a major production at McCoy Theatre. He also appeared in The Tape Recorder, and previous productions include The Music Man, Mousetrap, Brigadoon, and A Midsummer Night's Dream.

MATT STEPHENS (Trinculo)

Matt is a Film and Video Production major at MSU, and is making his McCoy debut. He has appeared in the Germantown Community Theatre production of South Pacific and in Theatre Memphis' A Christmas Carol.

RAY HILL (Stephano)

This is Ray's McCoy Theatre acting debut. Ray is a professor of Theatre and Media Arts at Southwestern and is also Associate Director of Continuing Education. He has performed and directed many productions in Memphis.

STEPHEN I. LEBOVITZ (Boatswain)

Since his performance as Schlegel in Carnival, Steve has appeared in Champagne Complex at the Millington Naval Base, Harvey at Gaslight Dinner Theatre and will be appearing in Playhouse on the Square's production of "1776" as Roger Sherman.

BOB LAWHON (Mariner, Spirit)

Bob is a Business-Economics major making his McCoy debut. In high school he appeared in Brigadoon and Oliver.

MARK-LANDON SMITH (Mariner, Spirit)

This is Mark's debut at the McCoy Theatre. He is a freshman from Jonesboro, AR, and has appeared in productions of Dracula, Reluctant Dragon, and Dinner At Eight.

KIMBERLY "LILA" MAGEE (Miranda)

Lila is a Southwestern freshman who last appeared on the McCoy stage as Mary Warren in *The Crucible*. She has also been the stage manager for *Something Unspoken* and *A Phoenix Too Frequent*.

HAROLD M. LEAVER (Ariel)

Harold is a junior majoring in Theatre and Media Arts. He has appeared in many McCoy productions including *A Phoenix Too Frequent*, *Another Part of the Forest*, and *Living Together*. Harold will direct McCoy Theatre's first studio production "*The Apollo of Bellac*" in the fall of 1983.

JAN BIGHAM (Iris)

Jan is a senior Theatre and Media Arts major, and has appeared in Southwestern's production of *The Crucible*, *Candide*, *Round and Round the Garden*, and *You're a Good Man Charlie Brown*. She has also been a First Generation member for two years.

ALLISON PACE (Ceres)

Allison is a National Sales Assistant for WHBQ-TV who is making her McCoy debut. She has appeared in Theatre Memphis' productions *The Music Man*, *A Christmas Carol*, *13 Rue de L'Amour*, and *Working*.

PATRICIA WADLEY (Juno)

Patricia is a member of the music faculty at Southwestern and a soprano soloist at Idlewild Presbyterian Church. This is her McCoy debut and she has appeared in many MSU Opera Theatre productions.

MARGARET EWIN BUTLER (Spirit)

Meg is making her McCoy stage debut, and she has worked behind stage for many McCoy productions. She is a senior Theatre and Media Arts major.

COOKIE EWING (Spirit)

Cookie is an instructor of Theatre and Media Arts at Southwestern, and has directed McCoy productions of *Brecht on Brecht* and *The Crucible*.

ACKNOWLEDGEMENTS

Assistant Stage Manager—Leslie Reddick

Projections filmed by House of Typography

Wilkerson Sound Studio for Sound Assistance—Steve Hartley

Light and Set Crew:

Van Daly, Meg Butler, Zan McKelway, John Bottomley, Rob Finch, John Marr, Steve Davis, Pat Vejr, Robert Watkins, Rodney Hudgen, Harold Leaver, Jan Bigham, Teresa Morrow, Dan Witherspoon, Marian Benjamin, Theresa Green, Cynthia Amos, Kathleen Albritton, Doug Trapp.

Costumes: David Jilg, Allison Pace, Carol Beck, Lila Magee

Sound Crew: Phil Jones, Marian Benjamin

Light Board Operator: Scott Sweetser

Synthesizer: Redmond Eason