

# Rhodes College Digital Archives - DLynx

## Playbill for Summer and Smoke, 1985

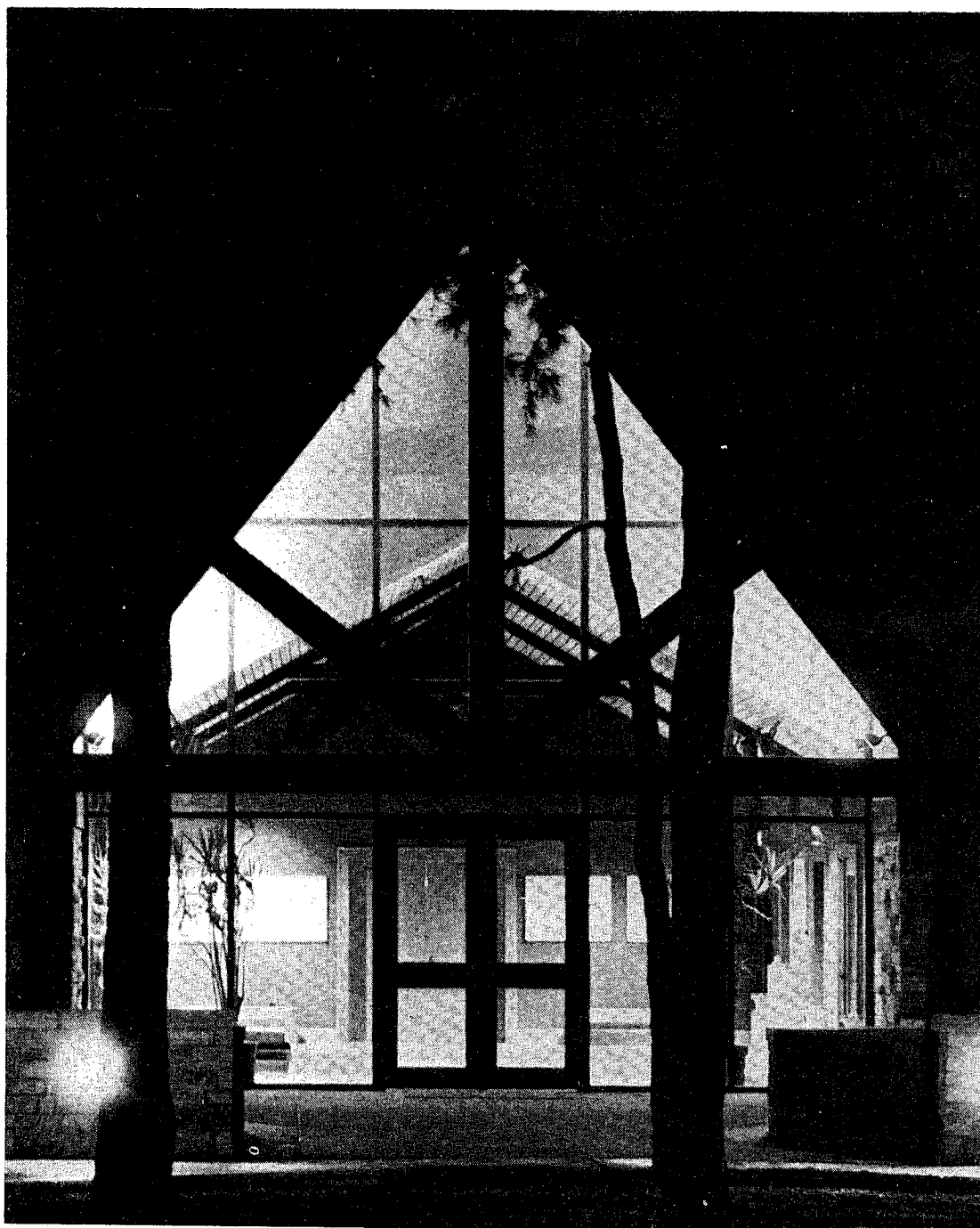
Item Type	Other
Publisher	Memphis, Tenn. : Theatre Department, Rhodes College
Download date	2026-04-11 08:48:44
Link to Item	<a href="http://hdl.handle.net/10267/7056">http://hdl.handle.net/10267/7056</a>

**McCoy Theatre**  
**RHODES COLLEGE**

presents

# Summer and Smoke

March 14-17; 21-24, 1985.



McCoy Theatre  
RHODES COLLEGE  
presents

# Summer and Smoke

by

Tennessee Williams

Directed by Gene Crain

Set Design ..... James Owen  
Costume Design ..... Bo Harris  
Lighting Design ..... Laura Canon  
Sound Design ..... Jamie Pilcher  
Stage Manager ..... Leslie Reddick  
Assistant Stage Manager ..... Marty Storey  
Properties ..... Leslie Reddick, Florence Johnson  
Light Board Operator ..... Liz McCraven

# CAST

(in alphabetical order)

Dusty .....	Peter Anderson
Vernon .....	Tim Bullard
Rev. Winemiller .....	Jesse Cauthen
John Buchanan, Jr. ....	Jerry Chipman
Rosa Gonzales .....	Cheryl Clark
Mrs. Bassett .....	Carolyn Derks
Alma Winemiller .....	Julia "Cookie" Ewing
Mrs. Winemiller .....	Lucile Ewing
Roger Doremus .....	Jonathan Huffman
Rosemary .....	Beth Jennings
Nellie Ewell .....	Lilla Magee
Gonzales .....	Brian Mott
Archie Kramer .....	Brett Rutledge
Dr. John Buchanan, Sr. ....	Stephen H. Williford

## Crews

Lilla Magee, Liz McCraven, Gayle McFarland, John McLaughlin, David Porter, John Warren

## Part 1: A SUMMER

- Scene 1: The fountain
- Scene 2: The doctor's office
- Scene 3: The rectory interior
- Scene 4: The rectory interior
- Scene 5: The doctor's office
- Scene 6: The rectory interior
- Scene 7: The arbor

## Part 2: A WINTER

- Scene 1: The rectory and doctor's office
- Scene 2: The doctor's office
- Scene 3: The rectory and doctor's office
- Scene 4: The fountain
- Scene 5: The doctor's office
- Scene 6: The fountain

The entire action of the play takes place in the town of  
Glorious Hill, Mississippi.

TIME: Turn of the century, through 1916

## WHO'S WHO

PETER ANDERSON (Dusty) is a Rhodes freshman from Atlanta, GA. His previous experience includes *KISS ME KATE*, *OUR TOWN*, and *JESUS CHRIST, SUPERSTAR*. He is a member of the Rhodes College Singers and First Generation. He enjoys music and tennis. This is Peter's McCoy debut.

TIM BULLARD (Vernon) is a Rhodes junior who performed at the McCoy previously in *YOU CAN'T TAKE IT WITH YOU*, *THE APOLLO OF BELLAC*, *THE CRUCIBLE*, and, last season, *THE TAMING OF THE SHREW*.

JESSE CAUTHEN (Rev. Winemiller) is an experienced actor with roles for the Actor's Company of Chicago and Barter Theatre of Virginia. He is a retired artist-teacher. This is his first appearance at the McCoy.

JERRY CHIPMAN (John Buchanan, Jr.) is a familiar face on Memphis stages, having directed and acted at Theatre Memphis and Circuit Playhouse. Favorites among his roles are Ken Harrison in *WHOSE LIFE IS IT, ANYWAY?*, Tony Cavendish in *THE ROYAL FAMILY*, and Father Brian Rivard in *THE RUNNER STUMBLES*. His direction of *CRIMES OF THE HEART* at Theatre Memphis last season was recognized by Edwin Howard as one of "Memphis' Best" in 1984. He is a member of the McCoy Playfinding Committee and recently designed sound for *BEYOND THERAPY* at the McCoy.

CHERYL CLARK (Rosa) is a Rhodes freshman from Forrest City, AR. Her previous experience at the McCoy was as a "contadine" in *THE GONDOLIERS*. She is a media major and a staff writer for *Rhodes Today*.

CAROLYN DERKS (Mrs. Bassett) is a senior Business/Computer Science major at Rhodes making her McCoy debut with this production. She is an athlete, having competed in ice shows, on swim teams, and in equestrian events. She has lived and traveled extensively throughout Europe, the Caribbean, and South America. She is also a Rhodes College Singer.

JULIA "COOKIE" EWING (Alma) is a member of the faculty of the Department of Theatre and Media Arts and teaches acting, directing, and theatre history. At the McCoy she has directed *THE CRUCIBLE*, *BRECHT ON BRECHT*, and *THE TAMING OF THE SHREW*. She has been involved in theatre since a child performer at Memphis Childrens' Theatre. She will be one of the associate directors for the McCoy's production of *NICHOLAS NICKLEBY*.

LUCILE EWING (Mrs. Winemiller) is proud to mark this production as the first time she has appeared onstage with her daughter, Julia "Cookie" Ewing. Mrs. Ewing founded Memphis Children's Theatre. She has recently appeared in *MORNINGS AT SEVEN* at Theatre Memphis, and in the films *MAKING THE GRADE* and *WALKING TALL: THE FINAL CHAPTER*. She is a familiar face in Memphis commercials.

JONATHAN HUFFMAN (Roger) is a junior French major at Rhodes making his debut with this production. He is a member of the US Air Force and enjoys distance running, languages, and photography.

BETH JENNINGS (Rosemary) is a sophomore French major at Rhodes who was previously seen at the McCoy as the nurse in *THE CHALK GARDEN*. She is a member of the Rhodes College Singers and an officer in Alpha Omicron Pi.

LILLA MAGEE (Nellie) is a Rhodes College junior Theatre and Media Arts major from Charleston, S.C. She has played Essie in *YOU CAN'T TAKE IT WITH YOU*, Miranda in *THE TEMPEST*, Kate in *THE TAMING OF THE SHREW*, and Mary Warren in *THE CRUCIBLE* at the McCoy as well as designing the set for *THE CHALK GARDEN* and Stage Managing *SOMETHING UNSPOKEN* and *A PHOENIX TOO FREQUENT*.

BRIAN MOTT (Gonzales) is a Rhodes sophomore originally from Covington, LA. He recently played the role of Billy in the McCoy Studio production of *THAT'S IT, FOLKS*, and was a member of the set crew for *THE GONDOLIERS*, *BEYOND THERAPY*, and *SUMMIT CONFERENCE*.

BRETT RUTLEDGE (Archie) has appeared at Memphis State University Theatre and Germantown High School. This is his McCoy debut.

STEPHEN H. WILLIFORD (Dr. John Buchanan, Sr.) is a familiar face at the McCoy, having appeared in *CANDIDE*, *CARNIVAL*, *SWEENEY TODD*, and *THE GONDOLIERS*, as well as *THE TAMING OF THE SHREW*. He is always a part of every strike crew. He is a travel agent for Mid-South Travel and enjoys playing his sousaphone.